

# V&V Reference Report

## L2 ASCDS Version : 7.6.7

Observation 6068 - L2 Version 002  
Chandra X-Ray Center

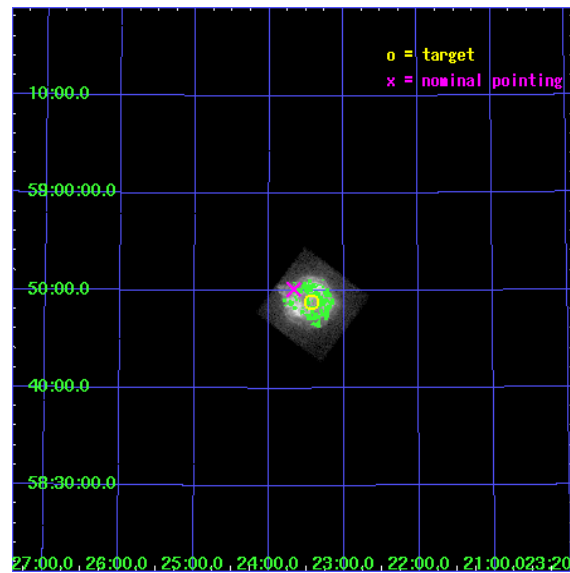
L2 Processing Date: Feb 28 2006

## Contents

<b>1</b>	<b>Front</b>	<b>2</b>
<b>2</b>	<b>OBI</b>	<b>3</b>
2.1	OBI . . . . .	3
2.1.1	Images . . . . .	3
2.1.2	Bias . . . . .	3
2.1.3	Parameters . . . . .	4
2.1.4	Events . . . . .	4
2.2	Compared Parameters . . . . .	5
2.3	Aspect . . . . .	6
2.4	Star Slots . . . . .	9
2.4.1	Slot 3 . . . . .	9
2.4.2	Slot 4 . . . . .	10
2.4.3	Slot 5 . . . . .	11
2.4.4	Slot 6 . . . . .	12
2.4.5	Slot 7 . . . . .	13
2.5	FID Slots . . . . .	14
2.5.1	Slot 0 . . . . .	14
2.5.2	Slot 1 . . . . .	15
2.5.3	Slot 2 . . . . .	16
<b>3</b>	<b>Point Sources</b>	<b>17</b>
<b>A</b>	<b>Summary</b>	<b>18</b>
A.1	Status . . . . .	18
A.2	Comments . . . . .	18

# 1 Front

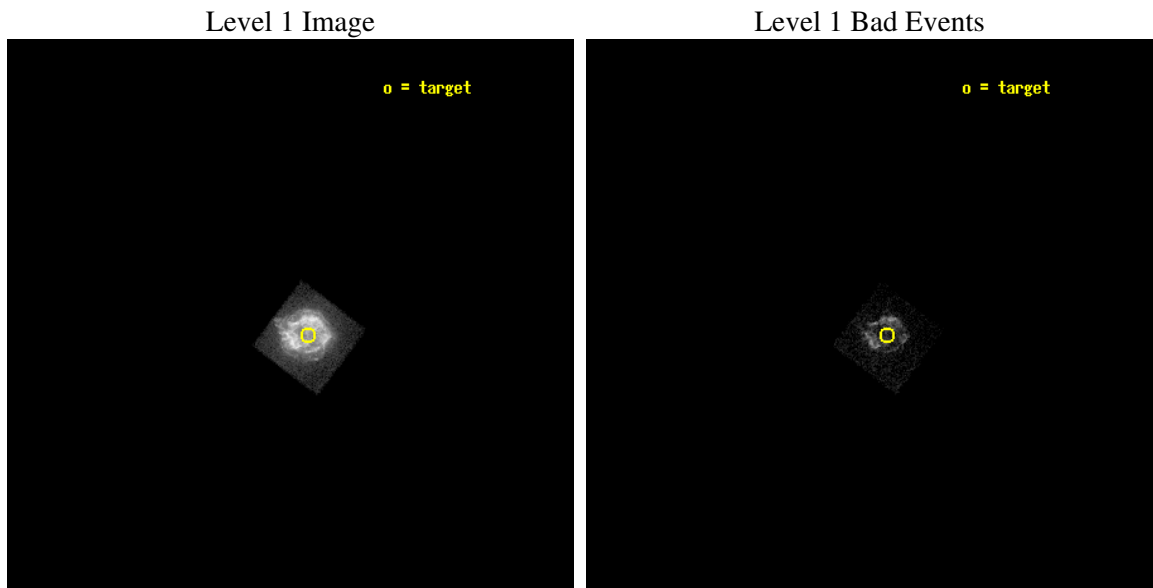
seq_num	590395
obs_id	6068
title	AO6A Observations of the Standard Candles Cas A and G21.5-09
observer	Dr. CXC Calibration
object	Cas A[S3,-120,-2.0,0,0]
dtcycle	0
cycle	P
ra_targ	350.8575
dec_targ	58.814833
ra_nom	350.91726245588
dec_nom	58.836118735903
roll_nom	37.08655551242
revision	2
ontime	1237.7591890097
livetime	1222.0859368693
ontime2	2041.518081665
ontime3	2047.9999923706
ontime5	2047.9999923706
ontime6	2047.9999923706
ontime7	1237.7591890097
ontime8	2047.9999923706
l2events	365673



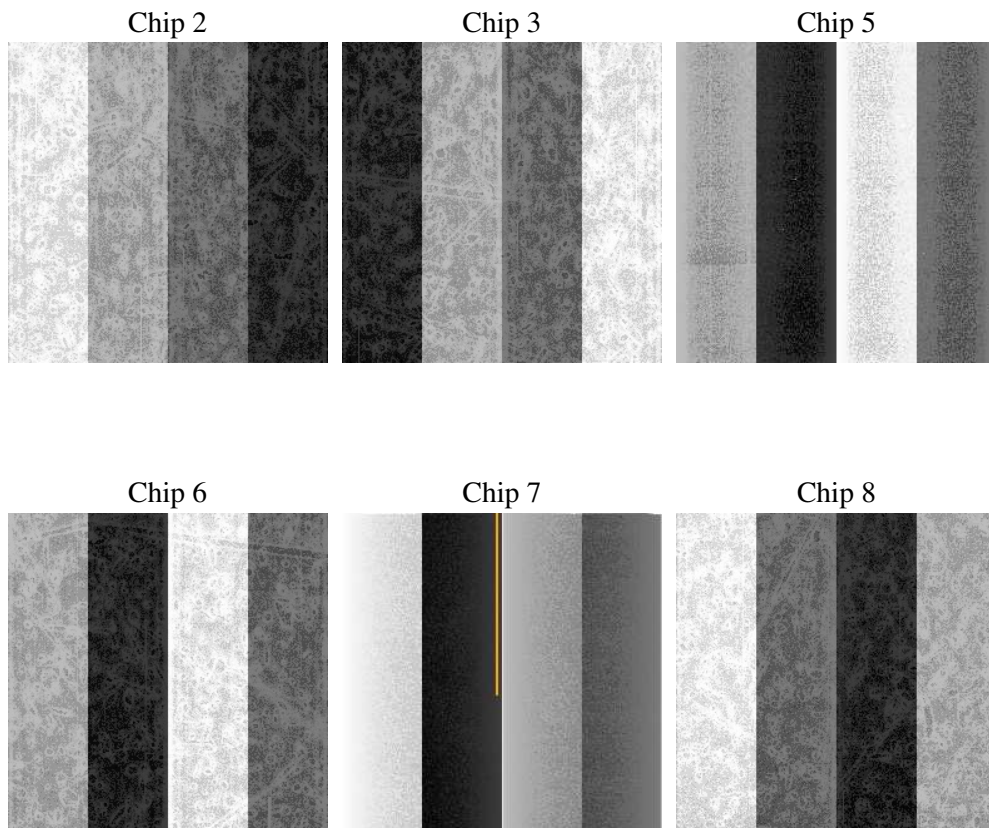
## 2 OBI

### 2.1 OBI

#### 2.1.1 Images



#### 2.1.2 Bias



### 2.1.3 Parameters

obi_num	0
ascdsver	7.6.7
caldsver	3.2.1
date	2006-02-28T20:42:44
revision	2

sched_exp_time	2000.000000
ontime	1241.3125197887
ontime2	2045.0714124441
ontime3	2051.5533231497
ontime5	2051.5533231497
ontime6	2051.5533231497
ontime7	1241.3125197887
ontime8	2051.5533231497
l1events	392822

### 2.1.4 Events

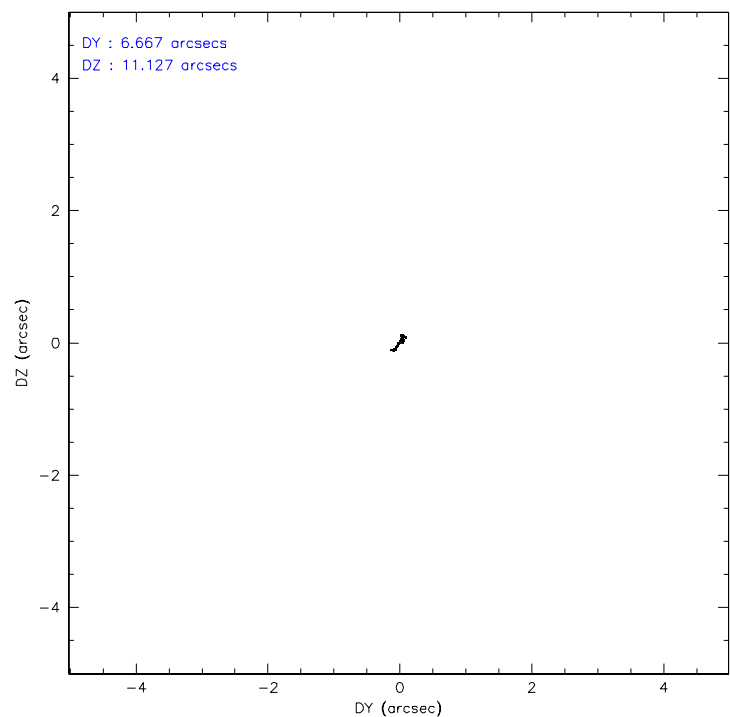
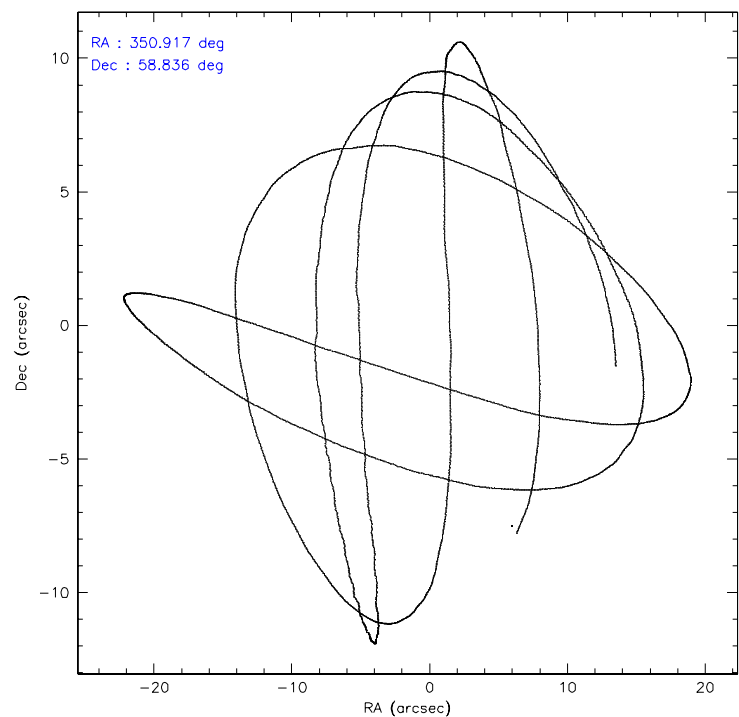
	ccd 2	ccd 3	ccd 5	ccd 6	ccd 7	ccd 8
level 1 events	0	0	0	0	392822	0
rejected events	0	0	0	0	23572	0
rejected %	0%	0%	0%	0%	6%	0%

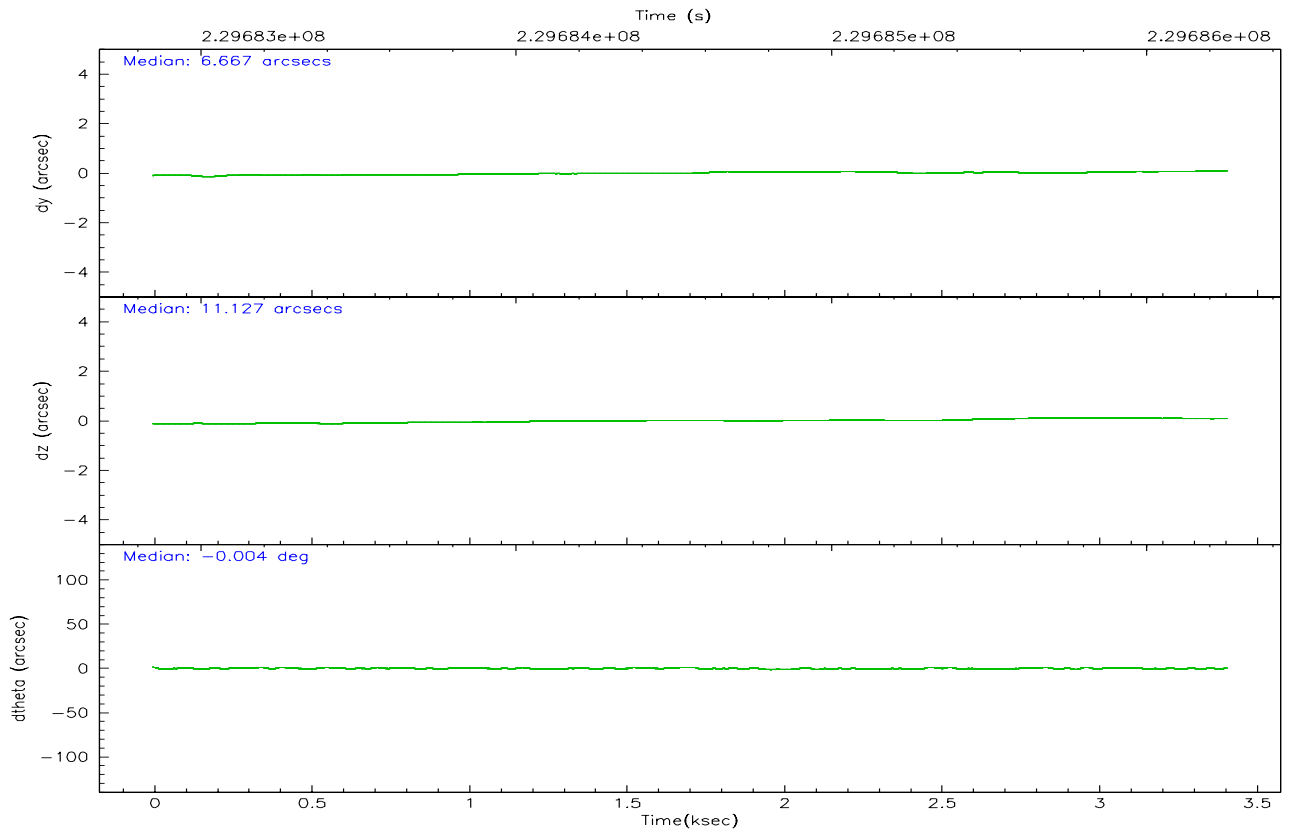
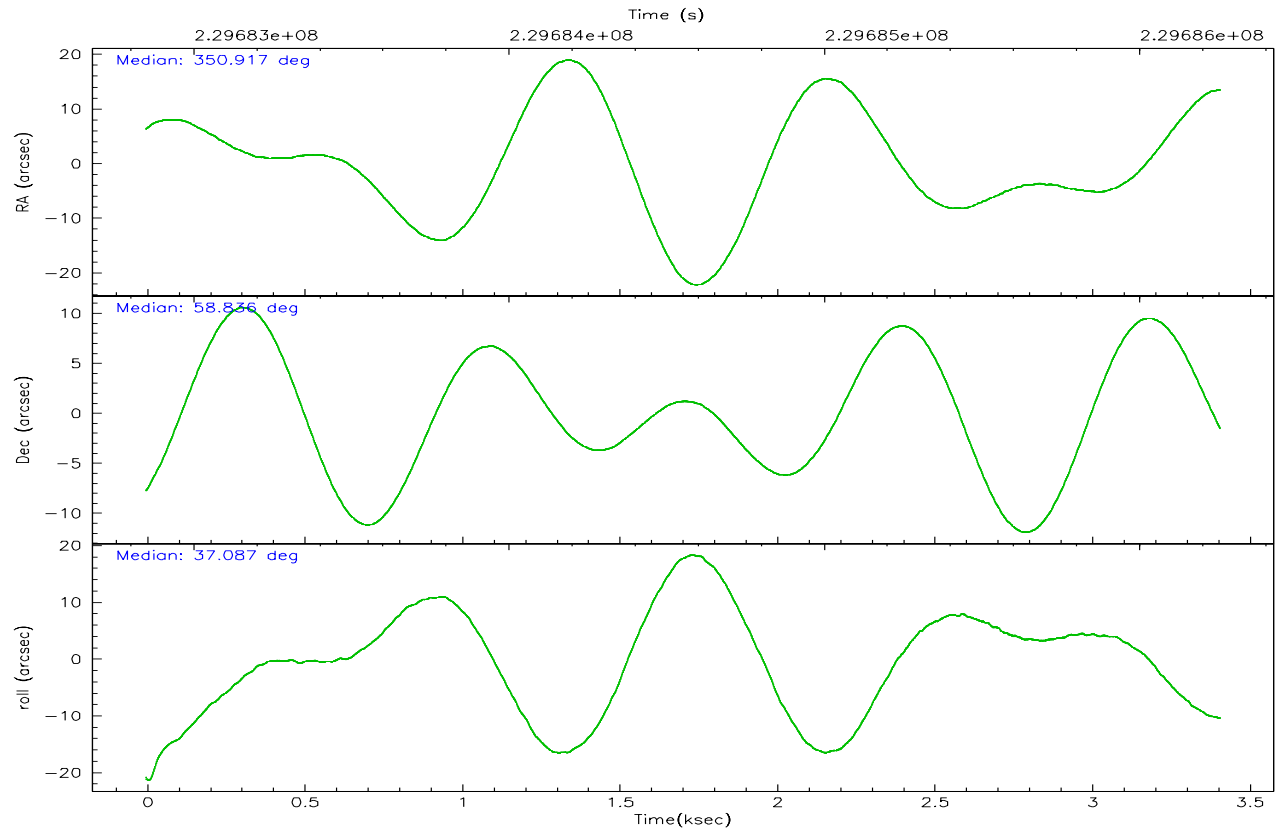
	ccd 2	ccd 3	ccd 5	ccd 6	ccd 7	ccd 8
grade 0 events	0	0	0	0	85101	0
	0%	0%	0%	0%	21%	0%
grade 1 events	0	0	0	0	1533	0
	0%	0%	0%	0%	0%	0%
grade 2 events	0	0	0	0	107404	0
	0%	0%	0%	0%	27%	0%
grade 3 events	0	0	0	0	40341	0
	0%	0%	0%	0%	10%	0%
grade 4 events	0	0	0	0	39893	0
	0%	0%	0%	0%	10%	0%
grade 5 events	0	0	0	0	7014	0
	0%	0%	0%	0%	1%	0%
grade 6 events	0	0	0	0	97546	0
	0%	0%	0%	0%	24%	0%
grade 7 events	0	0	0	0	13990	0
	0%	0%	0%	0%	3%	0%

## 2.2 Compared Parameters

Parameter	Planned	Actual	Parameter	Planned	Actual
Instrument	ACIS	ACIS	Obspar format version number	6	6
Detector	ACIS-235678	ACIS-235678	Obspar file type	PREDICTED	ACTUAL
Grating	NONE	NONE	Obspar update status	NONE	UPDATED
Data mode	FAINT	FAINT	On-chip summing requested	N	N
Observation mode	POINTING	POINTING	Subarray requested	NONE	NONE
Pointing RA	350.897293	350.9172624558774	Alternating exposures requested	N	N
Pointing Dec	58.810737	58.83611873590296	Primary exposure time	0.000000	3.2
Pointing Roll	36.947028	37.08655551241952			
Window start time	223603264.184000	223603264.184000			
Window stop time	233884864.184000	233884864.184000			
SIM focus pos (mm)	-0.684267	-0.6828225247311905			
SIM defocus (mm)	0	0.001444936568705701			
SIM translation stage pos (mm)	-190.132523	-190.1425803651734			
SIM translation stage offset (mm)	0	0.01005778216563158			
Observation start time	229684253.184000	229682632.14589			
Observation start date	2005-04-12T09:09:49	2005-04-12T08:43:52			
Observation end time	229686253.184000	229686446.68356			
Observation end date	2005-04-12T09:43:09	2005-04-12T09:47:26			
Read mode	TIMED	TIMED			

## 2.3 Aspect





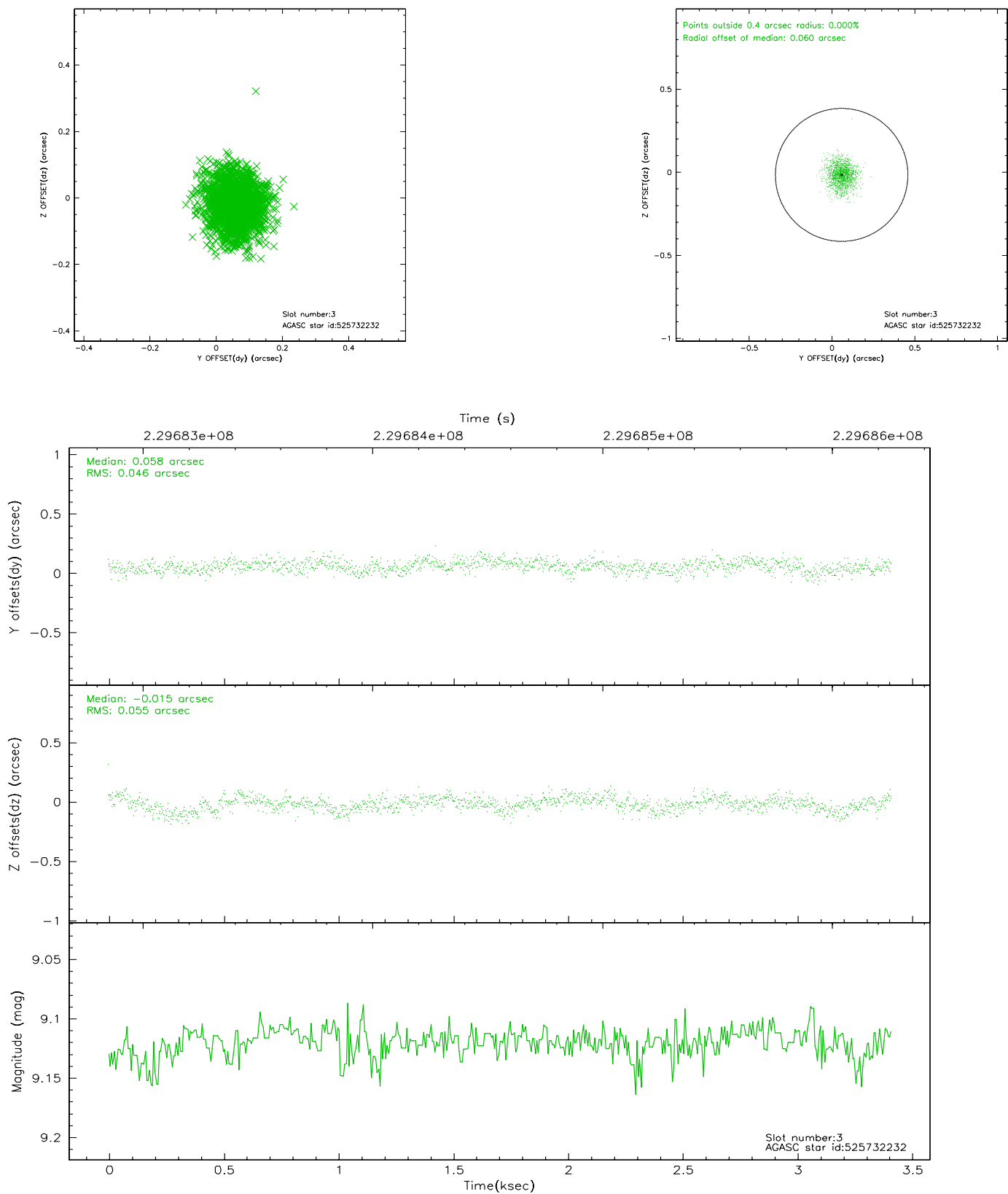
### Slot Statistics

slot	status	id	mag	n_pts	med_dy	med_dz	dr1	dr2	ra	dec	mean_y	mean_z
0	FID	ACIS-S-2	7.10	832	-0.032	-0.013	0.006	0.011	0.000000	0.000000	-759.43	-1732.37
1	FID	ACIS-S-4	7.20	832	0.031	0.015	0.006	0.010	0.000000	0.000000	2153.06	174.24
2	FID	ACIS-S-6	7.35	832	-0.026	0.006	0.007	0.011	0.000000	0.000000	404.94	813.73
3	GUIDE	525732232	9.12	1664	0.058	-0.015	0.077	0.123	351.669550	58.757012	1040.91	-1015.64
4	GUIDE	525732488	8.41	1663	0.035	-0.061	0.061	0.095	350.087090	58.516915	-1847.32	76.78
5	GUIDE	525732528	9.38	1665	-0.006	0.033	0.090	0.148	351.607241	59.298932	2101.79	625.79
6	GUIDE	525735456	6.72	1665	-0.171	-0.166	0.053	0.086	350.628183	59.307249	680.38	1726.67
7	GUIDE	525735976	8.75	1662	0.089	0.209	0.083	0.127	350.142956	58.277622	-2289.93	-668.03

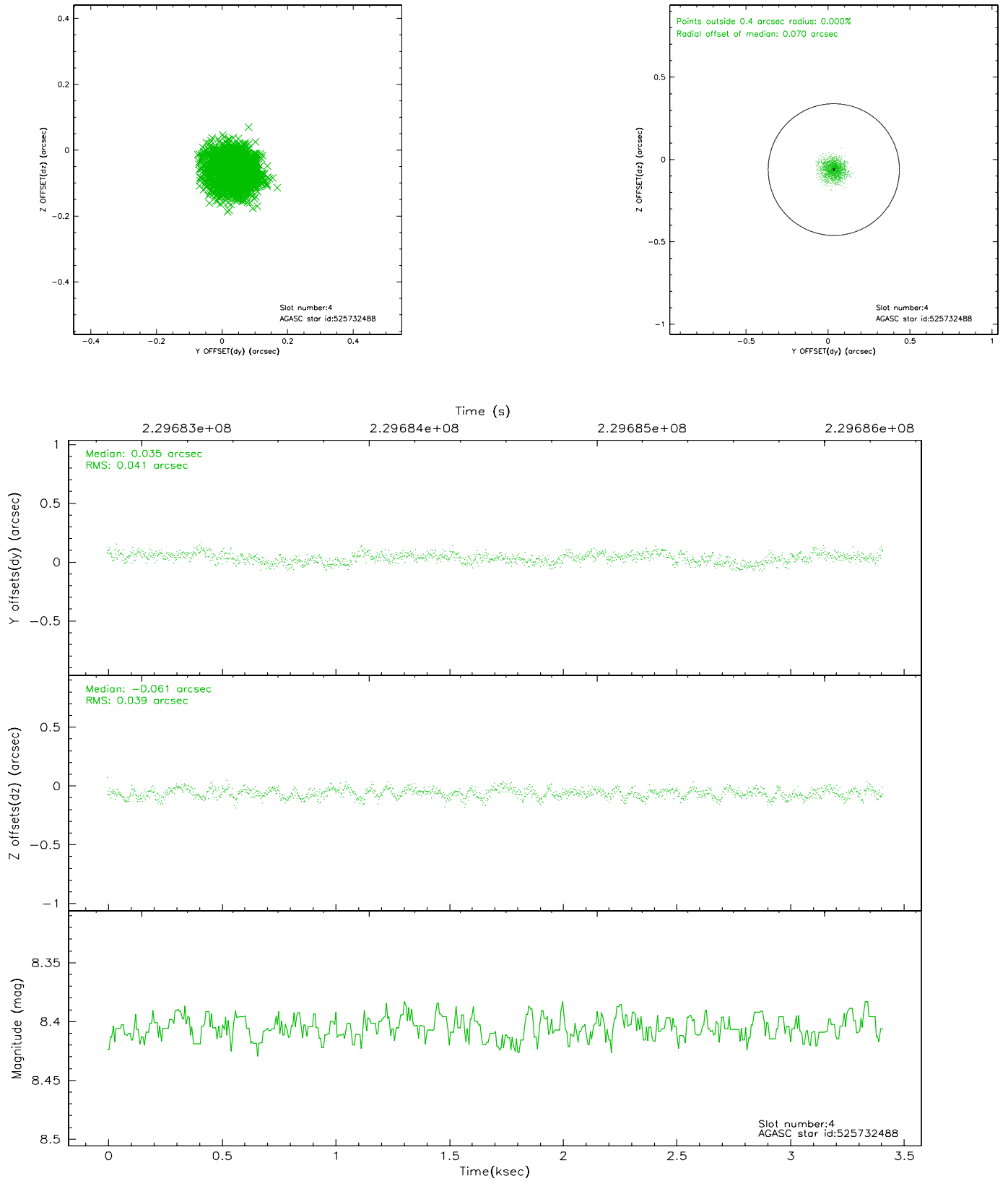


## 2.4 Star Slots

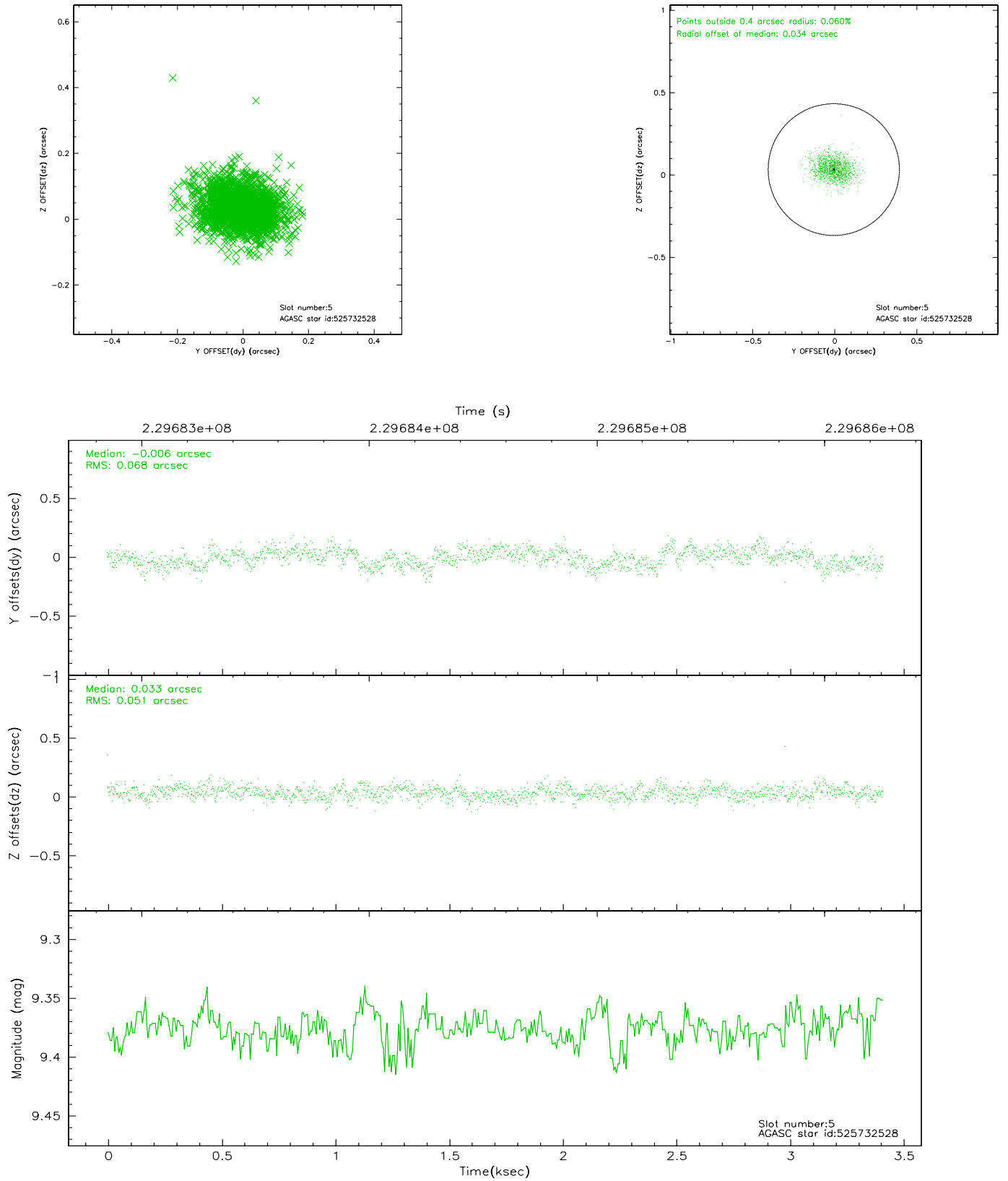
### 2.4.1 Slot 3



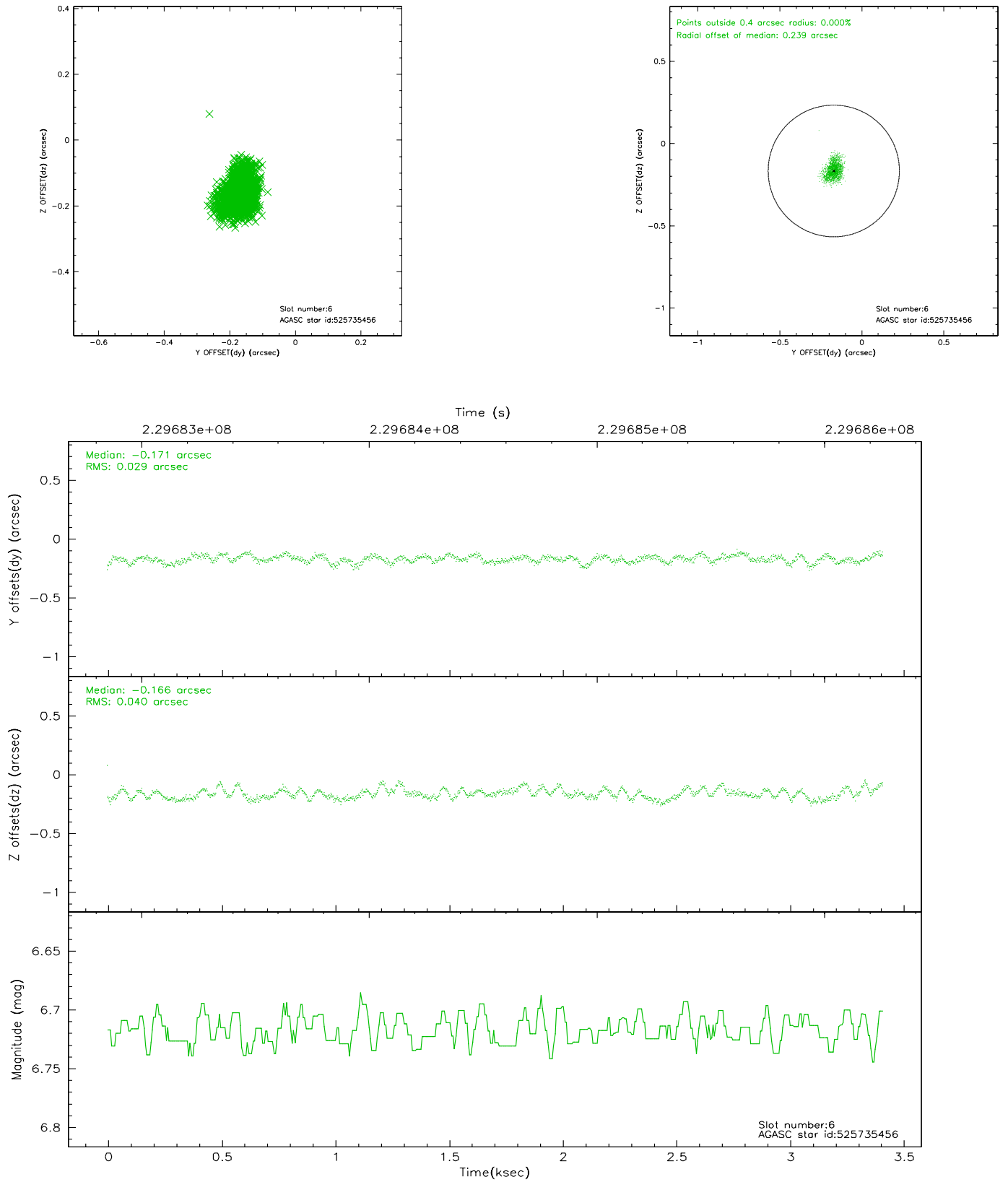
## 2.4.2 Slot 4



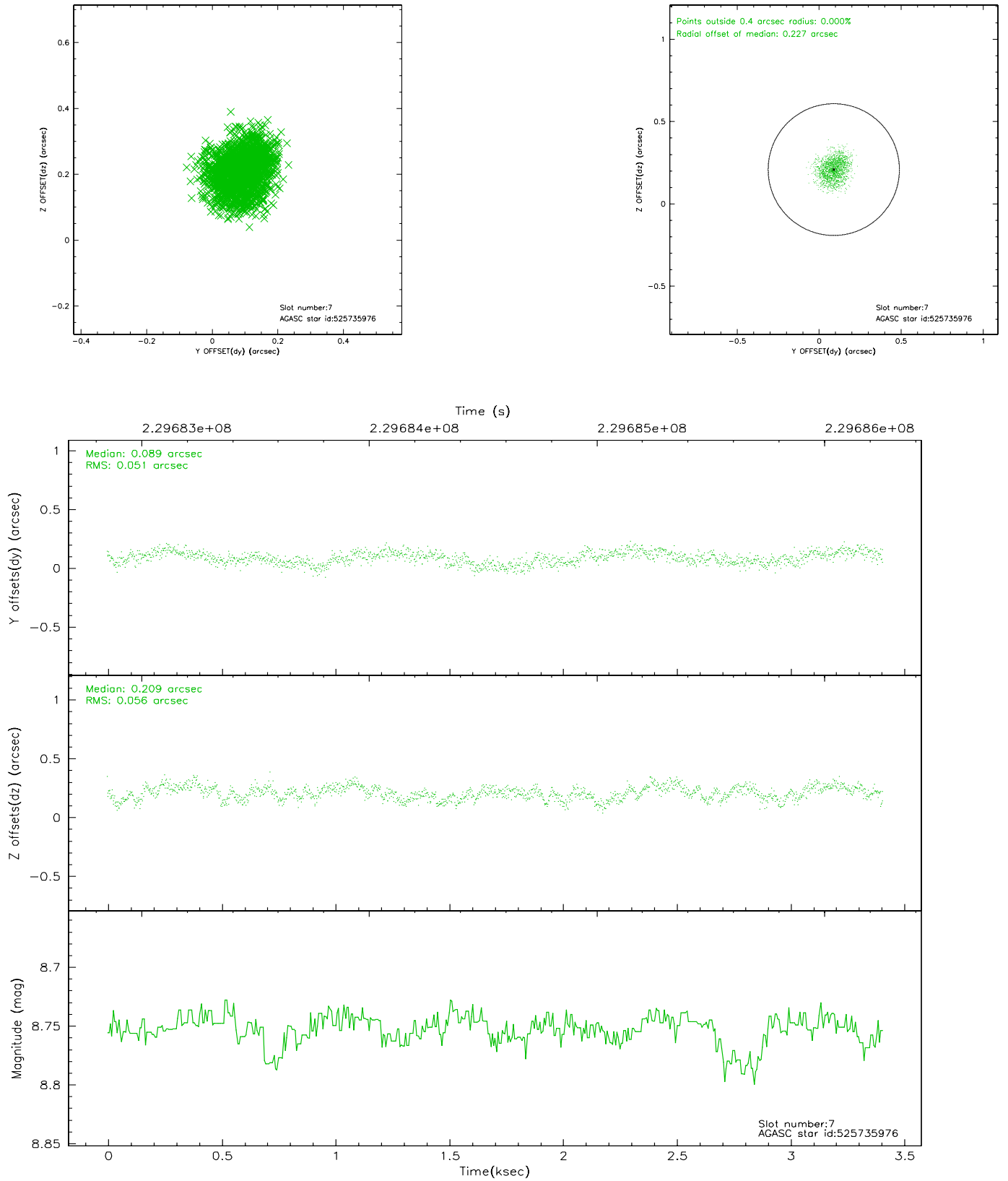
### 2.4.3 Slot 5



## 2.4.4 Slot 6

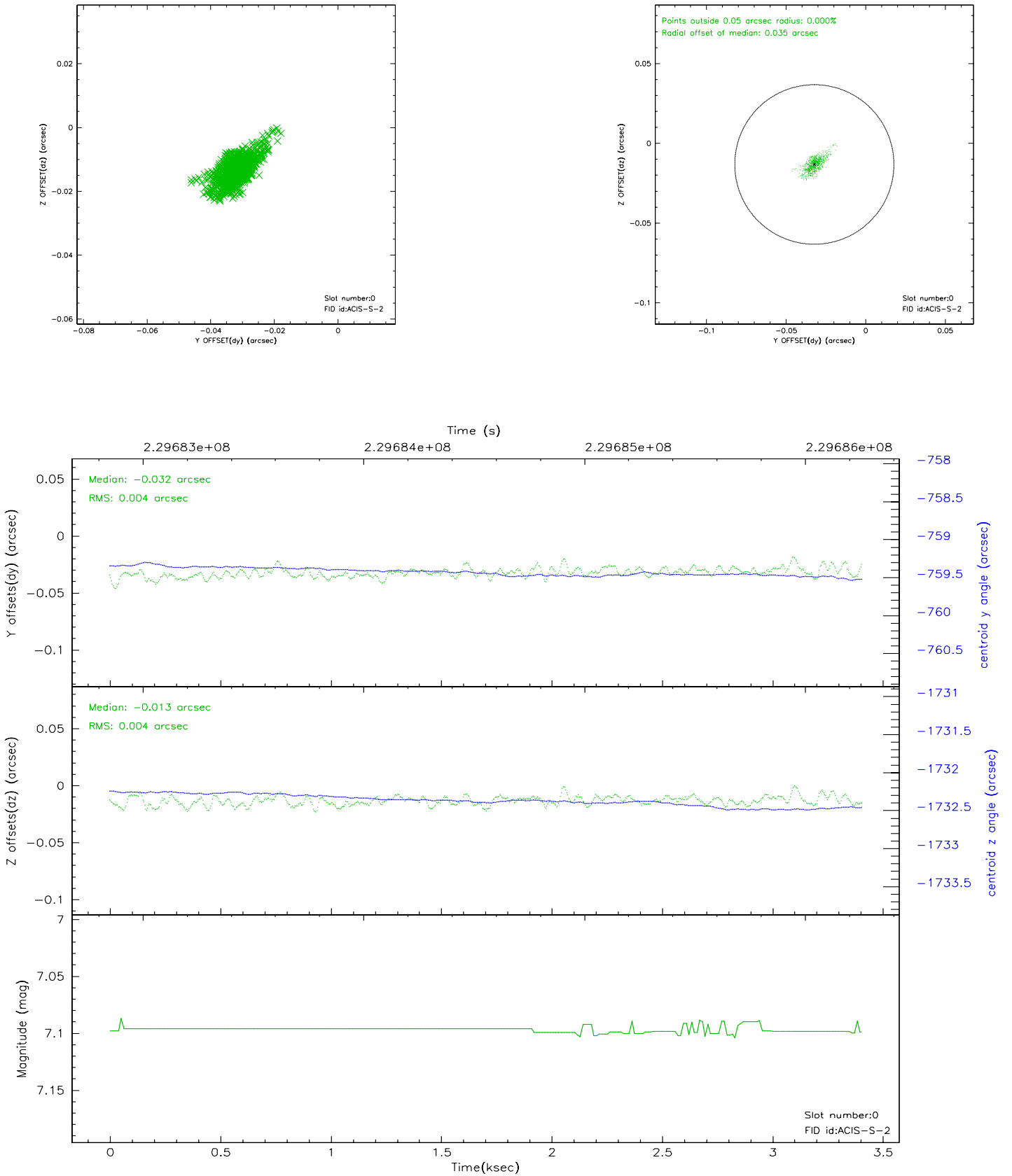


## 2.4.5 Slot 7

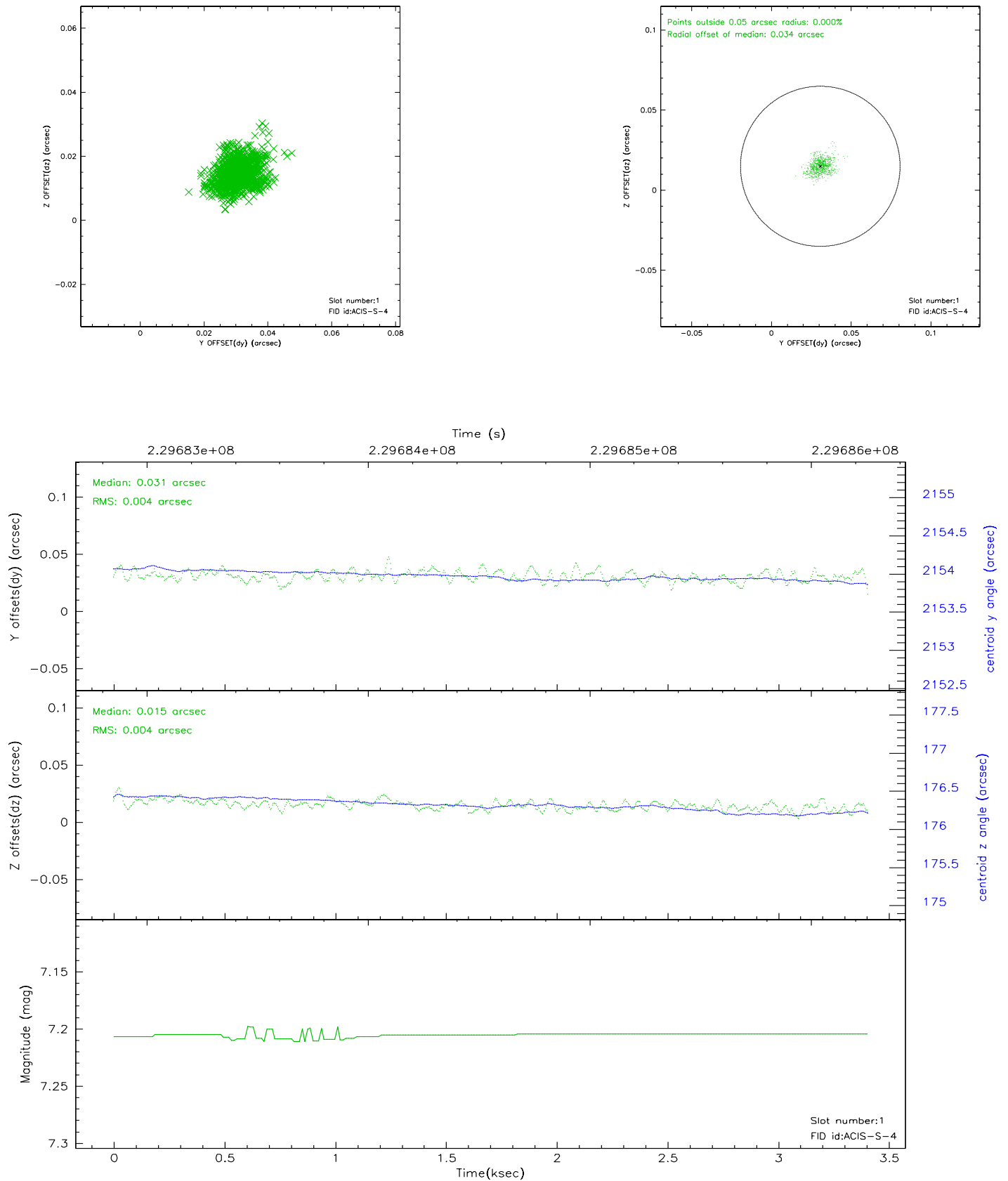


## 2.5 FID Slots

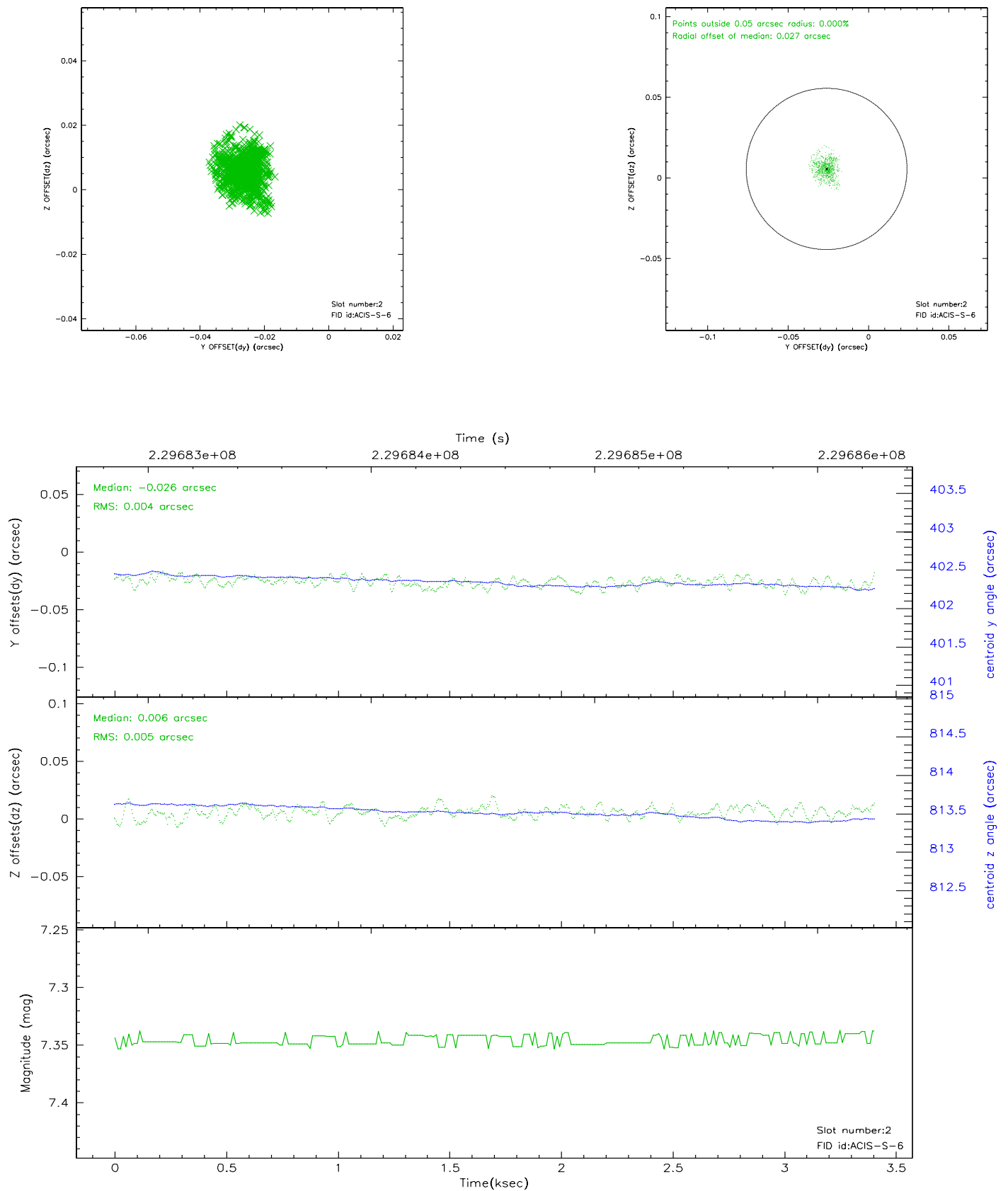
### 2.5.1 Slot 0



## 2.5.2 Slot 1



### 2.5.3 Slot 2





### 3 Point Sources

## A Summary

### A.1 Status

V&V Scientist	Beth Sundheim
V&V Date (YYYY-MM-DD)	2006.03.01
V&V Edition	1
V&V Disposition and Status	OK
V&V Charge Time	1.237759

### A.2 Comments