

# V&V Reference Report

## L2 ASCDS Version : 8.4.5

Observation 60508 - L2 Version 3  
Chandra X-Ray Center

L2 Processing Date : Nov 5 2012

## Contents

<b>1</b>	<b>Front</b>	<b>2</b>
<b>2</b>	<b>OBI</b>	<b>3</b>
2.1	OBI . . . . .	3
2.1.1	Images . . . . .	3
2.1.2	Bias . . . . .	3
2.1.3	Parameters . . . . .	4
2.1.4	Events . . . . .	4
2.2	Compared Parameters . . . . .	5
2.3	Star Slots . . . . .	6
2.4	FID Slots . . . . .	6
<b>A</b>	<b>Summary</b>	<b>7</b>
A.1	Status . . . . .	7
A.2	Comments . . . . .	7

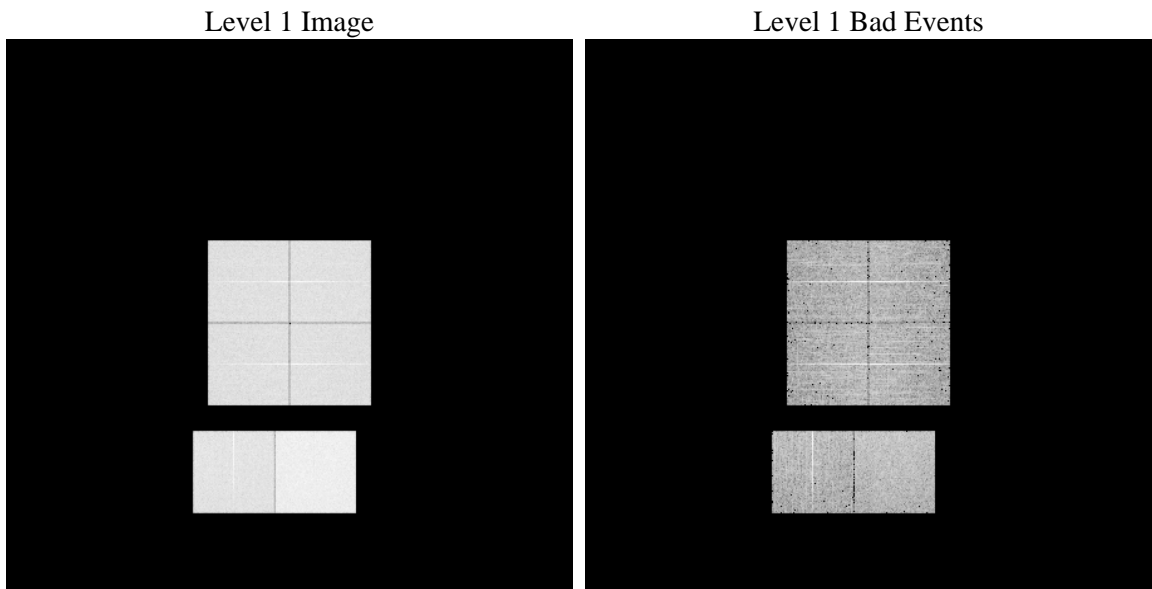
# 1 Front

seq_num	&#160	Sequence number
obs_id	60508	Observation id
title	ACIS-012367 diagnostics	Proposal title
observer	CHANDRA engineering request/realtime commanding	Principal investig
object	&#160	Source name
dtcycle	0	&#160
cycle	P	events from which exps? Prim/Second/Both
ra_targ	0.0	Observer's specified target RA [deg]
dec_targ	0.0	Observer's specified target Dec [deg]
ra_nom	29.420120283573	Nominal RA [deg]
dec_nom	-19.47857733126	Nominal Dec [deg]
roll_nom	15.606881414156	Nominal Roll [deg]
revision	3	Processing version of data
ontime	7807.418028146	Sum of GTIs [s]
livetime	7708.5558000109	Livetime [s]
ontime0	4984.4901765585	Sum of GTIs [s]
ontime1	5104.365454793	Sum of GTIs [s]
ontime2	4802.9125955105	Sum of GTIs [s]
ontime3	4829.0046675801	Sum of GTIs [s]
ontime6	5305.2241395414	Sum of GTIs [s]
ontime7	7807.418028146	Sum of GTIs [s]
l2events	1154963	Number of level 2 events

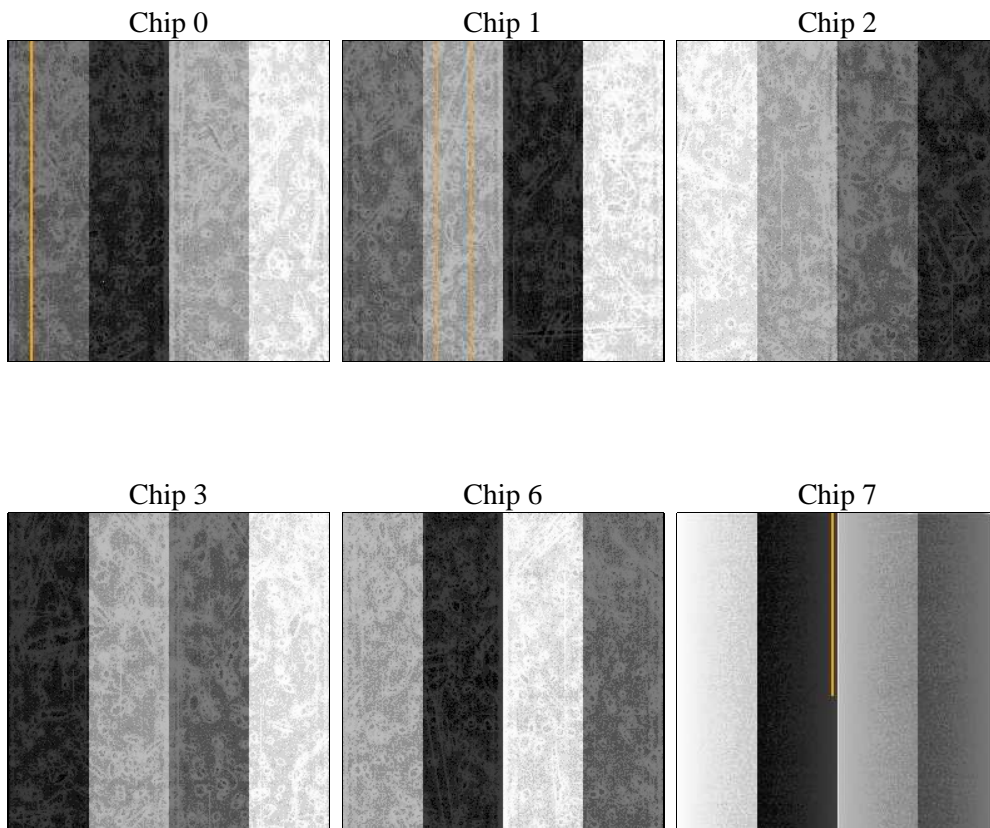
## 2 OBI

### 2.1 OBI

#### 2.1.1 Images



#### 2.1.2 Bias



### 2.1.3 Parameters

obi_num	0	Obi number	sched_exp_time	0.0	[s] Scheduled observation exposure time
ascdsver	8.4.5	Processing system revision	ontime	7807.418028146	Sum of GTIs [s]
caldsver	4.5.2	&#160	ontime0	4984.4901765585	Sum of GTIs [s]
date	2012-11-05T20:59:42	Date and time of file creation	ontime1	5104.365454793	Sum of GTIs [s]
revision	3	Processing version of data	ontime2	4802.9125955105	Sum of GTIs [s]
			ontime3	4829.0046675801	Sum of GTIs [s]
			ontime6	5305.2241395414	Sum of GTIs [s]
			ontime7	7807.418028146	Sum of GTIs [s]
			l1events	1420306	Number of level 1 events

### 2.1.4 Events

	ccd 0	ccd 1	ccd 2	ccd 3	ccd 6	ccd 7		ccd 0	ccd 1	ccd 2	ccd 3	ccd 6	ccd 7
level 1 events	209115	215810	207100	209850	235660	342771	grade 0 events	98088	101085	97316	98101	108442	75316
rejected events	31364	32290	33689	34950	36375	41927		46%	46%	46%	46%	46%	21%
rejected %	14%	14%	16%	16%	15%	12%	grade 1 events	569	502	569	562	481	201
								0%	0%	0%	0%	0%	0%
							grade 2 events	30866	32284	28918	29825	34353	66785
								14%	14%	13%	14%	14%	19%
							grade 3 events	11559	11506	11516	11515	12391	30452
								5%	5%	5%	5%	5%	8%
							grade 4 events	11527	11518	11259	11434	12367	29831
								5%	5%	5%	5%	5%	8%
							grade 5 events	2189	2306	2067	2315	2475	7890
								1%	1%	0%	1%	1%	2%
							grade 6 events	25711	27127	24402	24025	31732	98460
								12%	12%	11%	11%	13%	28%
							grade 7 events	28606	29482	31053	32073	33419	33836
								13%	13%	14%	15%	14%	9%

## 2.2 Compared Parameters

Parameter	Planned	Actual	Parameter	Planned	Actual
Instrument	ACIS	ACIS	Obspar format version number	7	7
Detector	ACIS-012367	ACIS-012367	Obspar file type	PREDICTED	ACTUAL
Grating	NONE	NONE	Obspar update status	NONE	UPDATED
Data mode	FAINT	FAINT	On-chip summing requested	N	N
Observation mode	SECONDARY	SECONDARY	Subarray requested	NONE	NONE
[deg] Pointing RA	0	29.42012028357271	Alternating exposures requested	N	N
[deg] Pointing Dec	0	-19.4785773312599	[s] Primary exposure time	0.000000	3.2
[deg] Pointing Roll	0.0	15.60688141415585			
[mm] SIM focus pos	-0.782348	-0.6828225247311905			
[mm] SIM defocus	0	0.8505141146731063			
[mm] SIM translation stage pos	-233.592463	250.466033080201			
[mm] SIM translation stage offset	0	-0.01005468664627074			
[s] Observation start time (MET)	182764170.902001	182764169.87726			
Observation start date	2003-10-17T07:49:31	2003-10-17T07:49:29			
[s] Observation end time (MET)	182778713.602628	182778712.57789			
Observation end date	2003-10-17T11:51:54	2003-10-17T11:51:52			
Read mode	TIMED	TIMED			

## **2.3 Star Slots**

## **2.4 FID Slots**

## A Summary

### A.1 Status

V&V Scientist	Beth Sundheim
V&V Date (YYYY-MM-DD)	2012.12.07
V&V Edition	1
V&V Disposition and Status	OK
V&V Charge Time	7.807418028146

### A.2 Comments