

V&V Reference Report

L2 ASCDS Version : 7.6.8

Observation 60508 - L2 Version 001
Chandra X-Ray Center

L2 Processing Date : Jun 29 2006

Contents

1	Front	2
2	OBI	3
2.1	OBI	3
2.1.1	Images	3
2.1.2	Bias	3
2.1.3	Parameters	4
2.1.4	Events	4
2.2	Compared Parameters	5
2.3	Aspect	6
2.4	Star Slots	8
2.5	FID Slots	8
A	Summary	9
A.1	Status	9
A.2	Comments	9

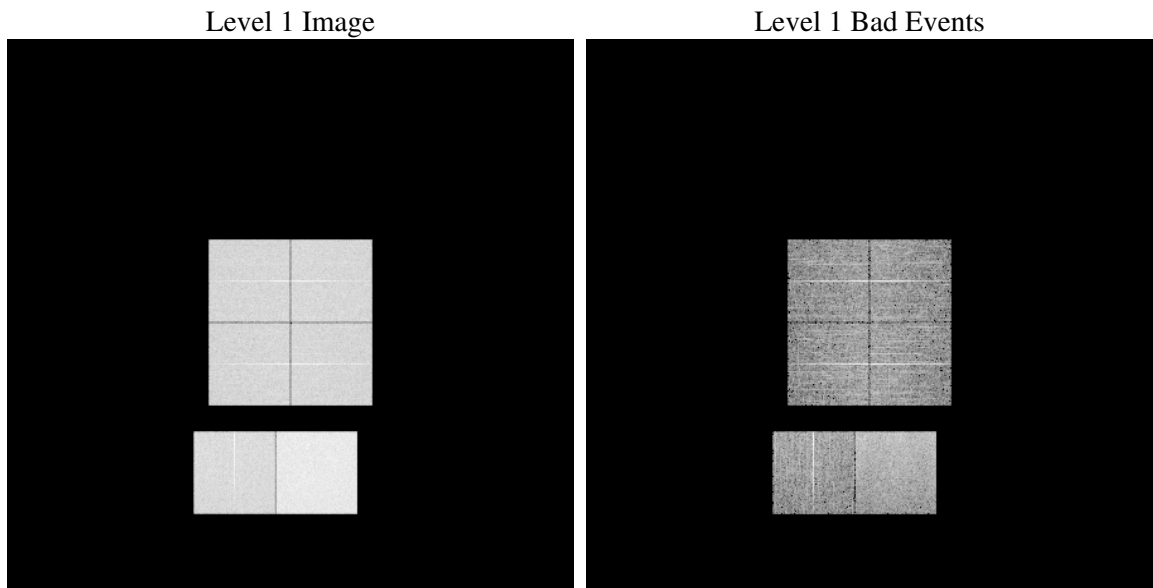
1 Front

seq_num	
obs_id	60508
title	ACIS-012367 diagnostics
observer	CHANDRA engineering request/realtime commanding
object	
dtcycle	0
cycle	P
ra_targ	0.0
dec_targ	0.0
ra_nom	29.420091895683
dec_nom	-19.478584775422
roll_nom	15.606871936459
revision	2
ontime	7806.5591883361
livetime	7707.7078353478
ontime0	4983.7134167552
ontime1	5103.6707749963
ontime2	4802.2999957204
ontime3	4828.0637477636
ontime6	5304.6936196983
ontime7	7806.5591883361
l2events	1144929

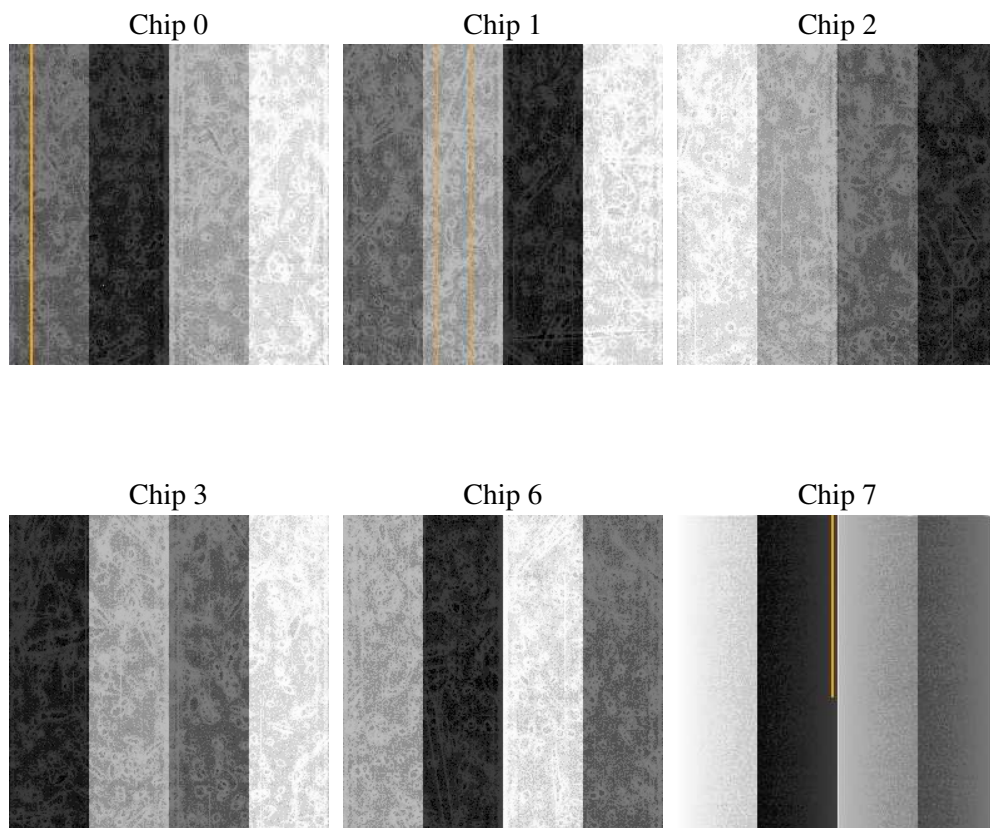
2 OBI

2.1 OBI

2.1.1 Images



2.1.2 Bias



2.1.3 Parameters

obi_num	0
ascdsver	7.6.8
caldsver	3.2.2
date	2006-06-29T17:05:59
revision	2

sched_exp_time	0.0
ontime	7807.5772455633
ontime0	4984.690433979
ontime1	5104.6067522168
ontime2	4803.1949329376
ontime3	4829.1228449941
ontime6	5305.547516942
ontime7	7807.5772455633
l1events	1420306

2.1.4 Events

	ccd 0	ccd 1	ccd 2	ccd 3	ccd 6	ccd 7
level 1 events	209115	215810	207100	209850	235660	342771
rejected events	31365	32290	33688	34950	36373	52090
rejected %	14%	14%	16%	16%	15%	15%

	ccd 0	ccd 1	ccd 2	ccd 3	ccd 6	ccd 7
grade 0 events	98088	101085	97320	98102	108444	53564
	46%	46%	46%	46%	46%	15%
grade 1 events	569	502	569	562	481	128
	0%	0%	0%	0%	0%	0%
grade 2 events	30866	32284	28914	29824	34351	86893
	14%	14%	13%	14%	14%	25%
grade 3 events	11559	11507	11516	11515	12391	21897
	5%	5%	5%	5%	5%	6%
grade 4 events	11528	11518	11259	11434	12367	21310
	5%	5%	5%	5%	5%	6%
grade 5 events	2190	2306	2067	2316	2475	6814
	1%	1%	0%	1%	1%	1%
grade 6 events	25709	27126	24403	24025	31734	107017
	12%	12%	11%	11%	13%	31%
grade 7 events	28606	29482	31052	32072	33417	45148
	13%	13%	14%	15%	14%	13%

2.2 Compared Parameters

Parameter	Planned	Actual	Parameter	Planned	Actual
Instrument	ACIS	ACIS	Obspar format version number	6	6
Detector	ACIS-012367	ACIS-012367	Obspar file type	PREDICTED	ACTUAL
Grating	NONE	NONE	Obspar update status	NONE	UPDATED
Data mode	FAINT	FAINT	On-chip summing requested	N	N
Observation mode	SECONDARY	SECONDARY	Subarray requested	NONE	NONE
Pointing RA	0	29.42009189568268	Alternating exposures requested	N	N
Pointing Dec	0	-19.47858477542176	Primary exposure time	0.000000	3.2
Pointing Roll	0.0	15.6068719364592			
SIM focus pos (mm)	-0.782348	-0.6828225247311905			
SIM defocus (mm)	0	0.8505141146731063			
SIM translation stage pos (mm)	-233.592463	250.466033080201			
SIM translation stage offset (mm)	0	-0.01005468664627074			
Observation start time	182764170.902001	182764169.87726			
Observation start date	2003-10-17T07:49:31	2003-10-17T07:49:29			
Observation end time	182778713.602628	182778712.57789			
Observation end date	2003-10-17T11:51:54	2003-10-17T11:51:52			
Read mode	TIMED	TIMED			

2.3 Aspect

2.4 Star Slots

2.5 FID Slots

A Summary

A.1 Status

V&V Scientist	Beth Sundheim
V&V Date (YYYY-MM-DD)	2006.06.29
V&V Edition	1
V&V Disposition and Status	OK
V&V Charge Time	7.80655918

A.2 Comments