

V&V Reference Report

L2 ASCDS Version : 8.4.5

Observation 60408 - L2 Version 3
Chandra X-Ray Center

L2 Processing Date : Nov 10 2012

Contents

1	Front	2
2	OBI	3
2.1	OBI	3
2.1.1	Images	3
2.1.2	Bias	3
2.1.3	Parameters	4
2.1.4	Events	4
2.2	Compared Parameters	5
2.3	Star Slots	6
2.4	FID Slots	6
A	Summary	7
A.1	Status	7
A.2	Comments	7

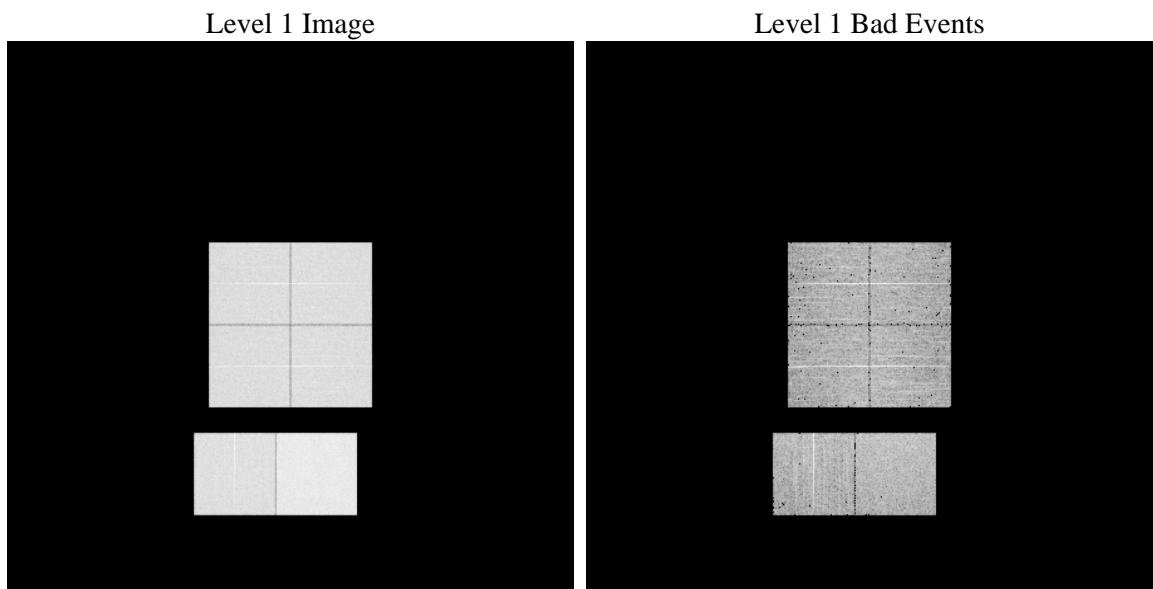
1 Front

seq_num	 	Sequence number
obs_id	60408	Observation id
title	ACIS-012367 diagnostics	Proposal title
observer	CHANDRA engineering request/realtime commanding	Principal investig
object	 	Source name
dtcycle	0	
cycle	P	events from which exps? Prim/Second/Both
ra_targ	0.0	Observer's specified target RA [deg]
dec_targ	0.0	Observer's specified target Dec [deg]
ra_nom	70.023457684414	Nominal RA [deg]
dec_nom	6.9833426206835	Nominal Dec [deg]
roll_nom	291.47946842919	Nominal Roll [deg]
revision	3	Processing version of data
ontime	7807.3518401086	Sum of GTIs [s]
livetime	7708.4904500863	Livetime [s]
ontime0	5192.1195212305	Sum of GTIs [s]
ontime1	5324.675971657	Sum of GTIs [s]
ontime2	5111.0949223638	Sum of GTIs [s]
ontime3	5185.43642205	Sum of GTIs [s]
ontime6	5499.6068576574	Sum of GTIs [s]
ontime7	7807.3518401086	Sum of GTIs [s]
l2events	1147421	Number of level 2 events

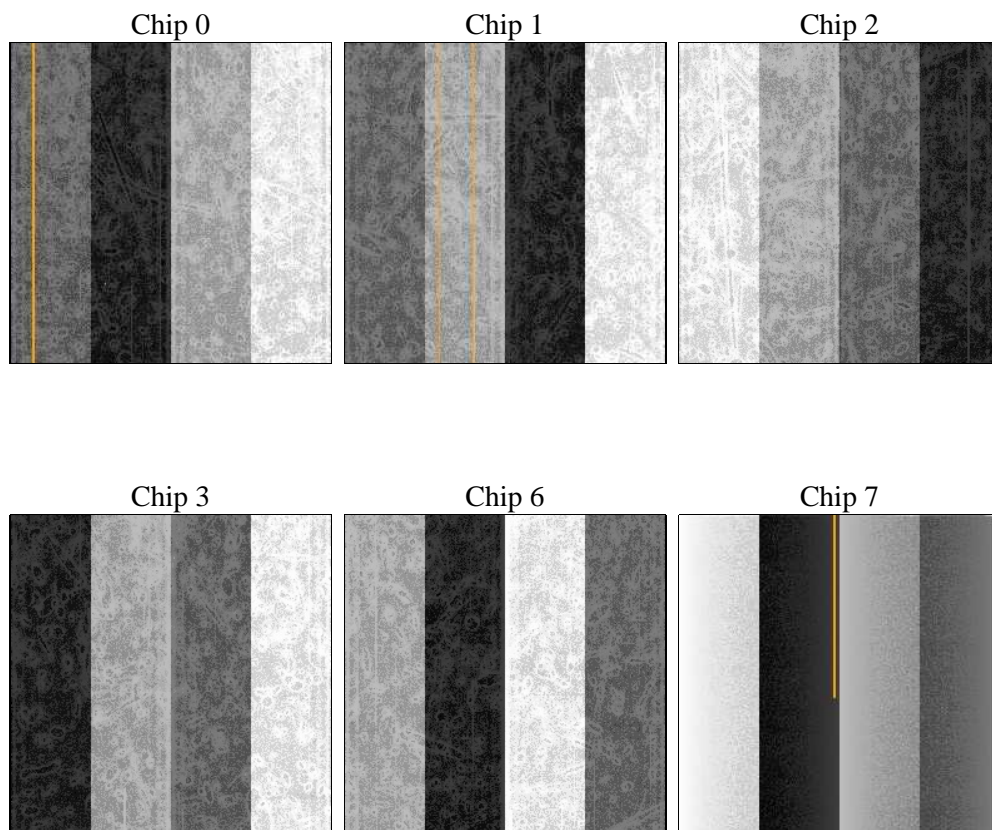
2 OBI

2.1 OBI

2.1.1 Images



2.1.2 Bias



2.1.3 Parameters

obi_num	1	Obi number	sched_exp_time	0.0	[s] Scheduled observation exposure time
ascdsver	8.4.5	Processing system revision	ontime	7807.3518401086	Sum of GTIs [s]
caldbver	4.5.2	 	ontime0	5192.1195212305	Sum of GTIs [s]
date	2012-11-10T21:32:35	Date and time of file creation	ontime1	5324.675971657	Sum of GTIs [s]
revision	3	Processing version of data	ontime2	5111.0949223638	Sum of GTIs [s]
			ontime3	5185.43642205	Sum of GTIs [s]
			ontime6	5499.6068576574	Sum of GTIs [s]
			ontime7	7807.3518401086	Sum of GTIs [s]
			l1events	1419599	Number of level 1 events

2.1.4 Events

	ccd 0	ccd 1	ccd 2	ccd 3	ccd 6	ccd 7		ccd 0	ccd 1	ccd 2	ccd 3	ccd 6	ccd 7
level 1 events	211811	217213	210551	215120	235281	329623	grade 0 events	97866	100297	99194	100820	106801	71202
rejected events	34220	33651	33863	35555	37798	41896		46%	46%	47%	46%	45%	21%
rejected %	16%	15%	16%	16%	16%	12%	grade 1 events	598	487	570	543	505	182
								0%	0%	0%	0%	0%	0%
							grade 2 events	31093	32887	29308	30287	33951	63877
								14%	15%	13%	14%	14%	19%
							grade 3 events	11240	11738	11462	11636	12389	28569
								5%	5%	5%	5%	5%	8%
							grade 4 events	11180	11424	11520	11660	12078	28417
								5%	5%	5%	5%	5%	8%
							grade 5 events	2158	2356	2179	2430	2589	7783
								1%	1%	1%	1%	1%	2%
							grade 6 events	26212	27216	25204	25162	32264	95662
								12%	12%	11%	11%	13%	29%
							grade 7 events	31464	30808	31114	32582	34704	33931
								14%	14%	14%	15%	14%	10%

2.2 Compared Parameters

Parameter	Planned	Actual
Instrument	ACIS	ACIS
Detector	ACIS-012367	ACIS-012367
Grating	NONE	NONE
Data mode	FAINT	FAINT
Observation mode	SECONDARY	SECONDARY
[deg] Pointing RA	0	70.02345768441394
[deg] Pointing Dec	0	6.983342620683549
[deg] Pointing Roll	0.0	291.4794684291911
[mm] SIM focus pos	-0.782348	-0.7809083437167272
[mm] SIM defocus	0	0.7524282956875696
[mm] SIM translation stage pos	-233.592463	250.466033080201
[mm] SIM translation stage offset	0	-0.01005468664627074
[s] Observation start time (MET)	190760591.898666	190760590.87395
Observation start date	2004-01-17T21:03:12	2004-01-17T21:03:10
[s] Observation end time (MET)	190775509.749317	190775508.7246
Observation end date	2004-01-18T01:11:50	2004-01-18T01:11:48
Read mode	TIMED	TIMED

Parameter	Planned	Actual
Obspar format version number	7	7
Obspar file type	PREDICTED	ACTUAL
Obspar update status	NONE	UPDATED
On-chip summing requested	N	N
Subarray requested	NONE	NONE
Alternating exposures requested	N	N
[s] Primary exposure time	0.000000	3.2

2.3 Star Slots

2.4 FID Slots

A Summary

A.1 Status

V&V Scientist	Beth Sundheim
V&V Date (YYYY-MM-DD)	2012.12.18
V&V Edition	1
V&V Disposition and Status	OK
V&V Charge Time	7.8073518401086

A.2 Comments