

# V&V Reference Report

## L2 ASCDS Version : 7.6.7.2

Observation 60258 - L2 Version 001  
Chandra X-Ray Center

L2 Processing Date : May 20 2006

## Contents

<b>1</b>	<b>Front</b>	<b>2</b>
<b>2</b>	<b>OBI</b>	<b>3</b>
2.1	OBI . . . . .	3
2.1.1	Images . . . . .	3
2.1.2	Bias . . . . .	3
2.1.3	Parameters . . . . .	4
2.1.4	Events . . . . .	4
2.2	Compared Parameters . . . . .	5
2.3	Aspect . . . . .	6
2.4	Star Slots . . . . .	8
2.5	FID Slots . . . . .	8
<b>A</b>	<b>Summary</b>	<b>9</b>
A.1	Status . . . . .	9
A.2	Comments . . . . .	9

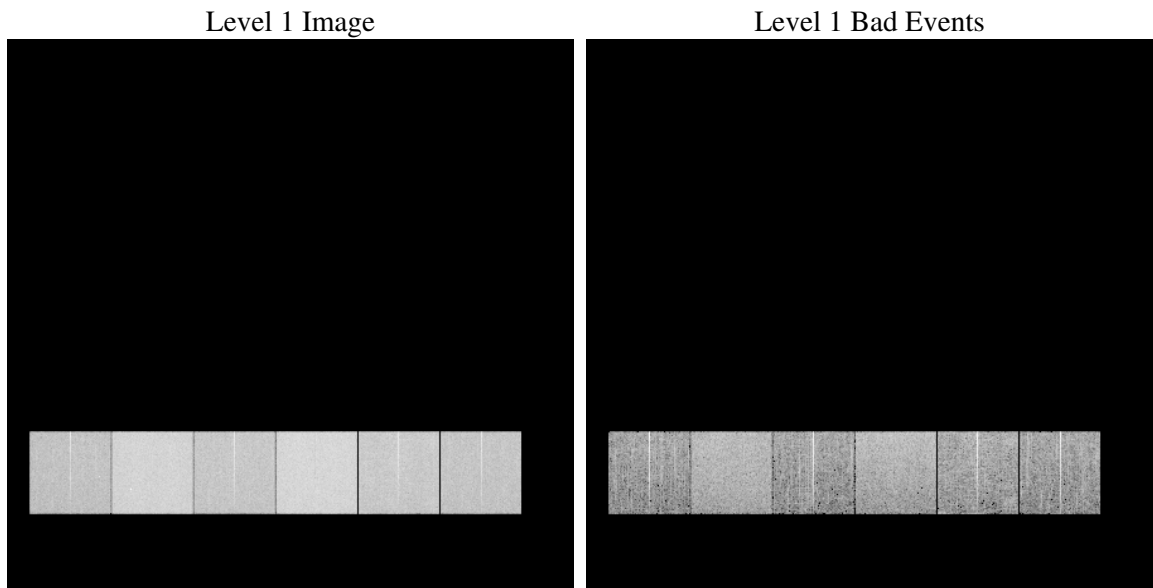
# 1 Front

seq_num	&#160
obs_id	60258
title	ACIS-456789 diagnostics
observer	CHANDRA engineering request/realtime commanding
object	&#160
dtcycle	0
cycle	P
ra_targ	0.0
dec_targ	0.0
ra_nom	216.02376066607
dec_nom	-19.982159657071
roll_nom	5.7672504821217
revision	2
ontime	8456.2286144495
livetime	8349.1507560038
ontime4	5289.9221701324
ontime5	8459.5106446445
ontime6	5766.3048757315
ontime7	8456.2286144495
ontime8	5957.6044018567
ontime9	5549.0361600816
l2events	1170983

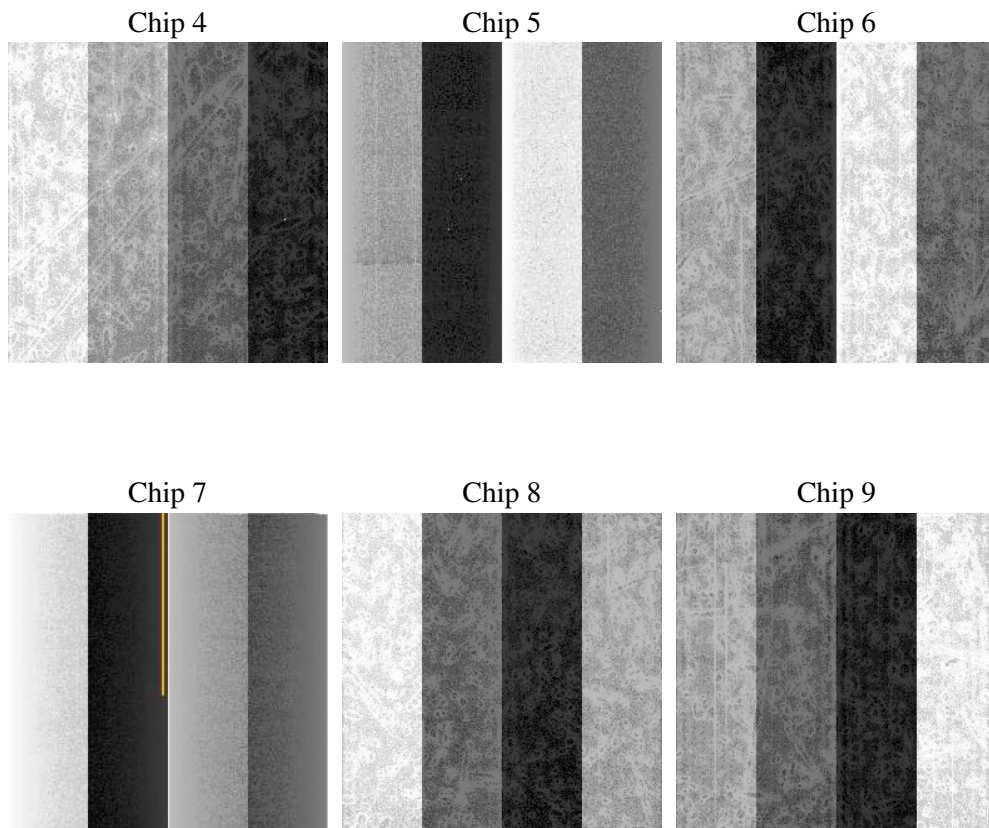
## 2 OBI

### 2.1 OBI

#### 2.1.1 Images



#### 2.1.2 Bias



### 2.1.3 Parameters

obi_num	0
ascdsver	7.6.7.2
caldbver	3.2.2
date	2006-05-20T16:53:00
revision	2

sched_exp_time	0.0
ontime	8459.0178626776
ontime4	5292.5882983506
ontime5	8462.2588528693
ontime6	5769.0120439529
ontime7	8459.0178626776
ontime8	5960.2294901013
ontime9	5551.866448313
l1events	1532001

### 2.1.4 Events

	ccd 4	ccd 5	ccd 6	ccd 7	ccd 8	ccd 9
level 1 events	200202	309797	228518	334009	245269	214206
rejected events	40982	64561	41983	60330	47697	41692
rejected %	20%	20%	18%	18%	19%	19%

	ccd 4	ccd 5	ccd 6	ccd 7	ccd 8	ccd 9
grade 0 events	92233	27014	101637	47186	108131	95312
	46%	8%	44%	14%	44%	44%
grade 1 events	710	102	516	113	565	562
	0%	0%	0%	0%	0%	0%
grade 2 events	25322	115560	32349	83428	34272	29632
	12%	37%	14%	24%	13%	13%
grade 3 events	10741	7844	11571	19987	12928	11195
	5%	2%	5%	5%	5%	5%
grade 4 events	10680	7748	11405	19315	12916	10975
	5%	2%	4%	5%	5%	5%
grade 5 events	2461	6333	2772	7357	3329	2928
	1%	2%	1%	2%	1%	1%
grade 6 events	20325	87177	29663	103881	29429	25507
	10%	28%	12%	31%	11%	11%
grade 7 events	37730	58019	38605	52742	43699	38095
	18%	18%	16%	15%	17%	17%

## 2.2 Compared Parameters

Parameter	Planned	Actual	Parameter	Planned	Actual
Instrument	ACIS	ACIS	Obspar format version number	6	6
Detector	ACIS-456789	ACIS-456789	Obspar file type	PREDICTED	ACTUAL
Grating	NONE	NONE	Obspar update status	NONE	UPDATED
Data mode	FAINT	FAINT	On-chip summing requested	N	N
Observation mode	SECONDARY	SECONDARY	Subarray requested	NONE	NONE
Pointing RA	0	216.02376066607	Alternating exposures requested	N	N
Pointing Dec	0	-19.98215965707051	Primary exposure time	0.000000	3.2
Pointing Roll	0.0	5.767250482121706			
SIM focus pos (mm)	-0.684267	-0.6828225247311905			
SIM defocus (mm)	0	0.8505141146731063			
SIM translation stage pos (mm)	-190.132523	250.466033080201			
SIM translation stage offset (mm)	0	-0.01005468664627074			
Observation start time	199477056.981164	199477055.95617			
Observation start date	2004-04-27T18:17:37	2004-04-27T18:17:35			
Observation end time	199498522.53211	199498521.50712			
Observation end date	2004-04-28T00:15:23	2004-04-28T00:15:21			
Read mode	TIMED	TIMED			

## 2.3 Aspect



## **2.4 Star Slots**

## **2.5 FID Slots**



## A Summary

### A.1 Status

V&V Scientist	Beth Sundheim
V&V Date (YYYY-MM-DD)	2006.05.21
V&V Edition	1
V&V Disposition and Status	OK
V&V Charge Time	8.45622861

### A.2 Comments

Focal plane temperature decreases by a degree during observation.