

# V&V Reference Report

## L2 ASCDS Version : 7.6.7.2

Observation 60108 - L2 Version 001  
Chandra X-Ray Center

L2 Processing Date : Apr 26 2006

## Contents

<b>1</b>	<b>Front</b>	<b>2</b>
<b>2</b>	<b>OBI</b>	<b>3</b>
2.1	OBI . . . . .	3
2.1.1	Images . . . . .	3
2.1.2	Bias . . . . .	3
2.1.3	Parameters . . . . .	4
2.1.4	Events . . . . .	4
2.2	Compared Parameters . . . . .	5
2.3	Aspect . . . . .	6
2.4	Star Slots . . . . .	8
2.5	FID Slots . . . . .	8
<b>A</b>	<b>Summary</b>	<b>9</b>
A.1	Status . . . . .	9
A.2	Comments . . . . .	9

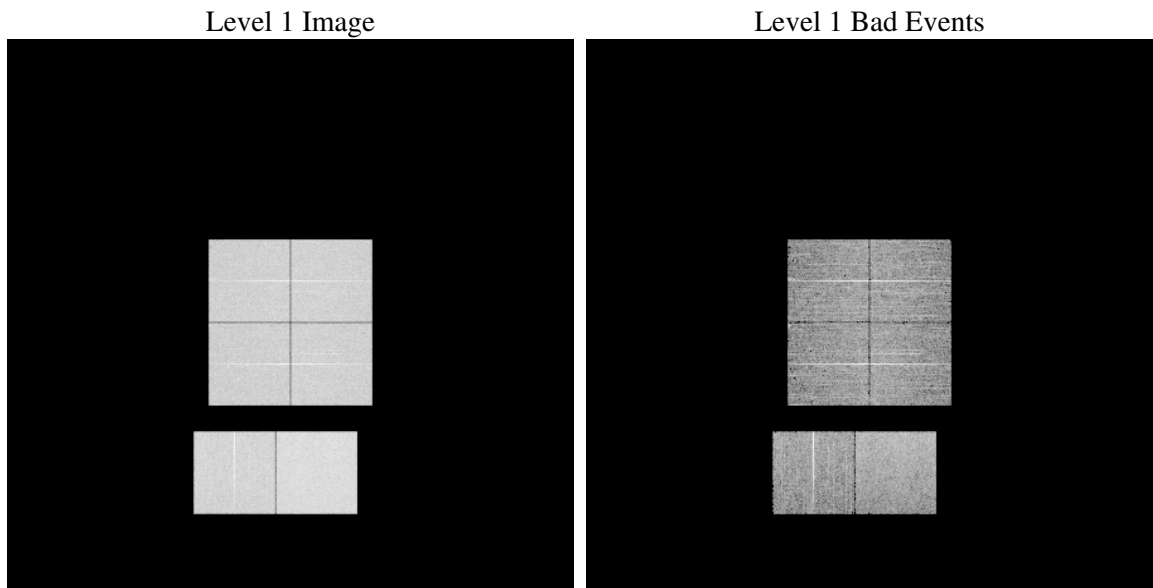
# 1 Front

seq_num	&#160
obs_id	60108
title	ACIS-012367 diagnostics
observer	CHANDRA engineering request/realtime commanding
object	&#160
dtcycle	0
cycle	P
ra_targ	0.0
dec_targ	0.0
ra_nom	274.02399275099
dec_nom	-32.02008051607
roll_nom	282.48382089567
revision	2
ontime	8243.1999692917
livetime	8138.8196078214
ontime0	6567.6157620549
ontime1	6668.0856323242
ontime2	6269.4453982711
ontime3	6486.5906584263
ontime6	6972.7374982536
ontime7	8243.1999692917
l2events	1153504

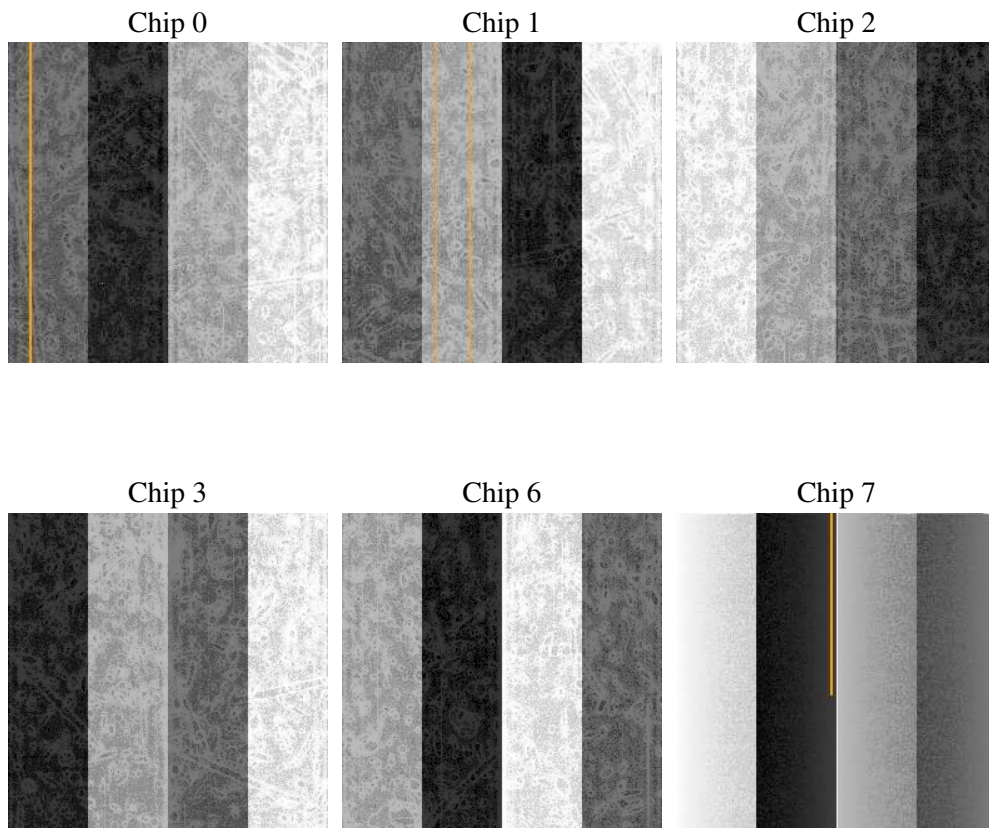
## 2 OBI

### 2.1 OBI

#### 2.1.1 Images



#### 2.1.2 Bias



### 2.1.3 Parameters

obi_num	5
ascdsver	7.6.7.2
caldbver	3.2.1
date	2006-04-26T23:20:00
revision	2

sched_exp_time	0.0
ontime	8284.011878103
ontime0	6605.1866905987
ontime1	6705.6565708518
ontime2	6300.5343961418
ontime3	6520.9206266701
ontime6	7010.3084267974
ontime7	8284.011878103
l1events	1499179

### 2.1.4 Events

	ccd 0	ccd 1	ccd 2	ccd 3	ccd 6	ccd 7
level 1 events	233350	237737	226906	236062	258066	307058
rejected events	44354	45191	44265	46036	48317	59780
rejected %	19%	19%	19%	19%	18%	19%

	ccd 0	ccd 1	ccd 2	ccd 3	ccd 6	ccd 7
grade 0 events	105316	105773	103400	108263	114242	40320
	45%	44%	45%	45%	44%	13%
grade 1 events	557	506	632	632	534	97
	0%	0%	0%	0%	0%	0%
grade 2 events	32871	35213	30275	32112	36479	77575
	14%	14%	13%	13%	14%	25%
grade 3 events	12152	12081	11765	12261	12920	17078
	5%	5%	5%	5%	5%	5%
grade 4 events	12134	12084	12185	12256	13132	16765
	5%	5%	5%	5%	5%	5%
grade 5 events	2772	2790	2646	2833	3189	6888
	1%	1%	1%	1%	1%	2%
grade 6 events	27546	28429	25860	26076	34069	96706
	11%	11%	11%	11%	13%	31%
grade 7 events	40002	40861	40143	41629	43501	51629
	17%	17%	17%	17%	16%	16%

## 2.2 Compared Parameters

Parameter	Planned	Actual	Parameter	Planned	Actual
Instrument	ACIS	ACIS	Obspar format version number	6	6
Detector	ACIS-012367	ACIS-012367	Obspar file type	PREDICTED	ACTUAL
Grating	NONE	NONE	Obspar update status	NONE	UPDATED
Data mode	FAINT	FAINT	On-chip summing requested	N	N
Observation mode	SECONDARY	SECONDARY	Subarray requested	NONE	NONE
Pointing RA	0	274.0239927509924	Alternating exposures requested	N	N
Pointing Dec	0	-32.02008051606957	Primary exposure time	3.2	3.2
Pointing Roll	0.0	282.4838208956722			
SIM focus pos (mm)	-0.782348	-0.6828225247311905			
SIM defocus (mm)	0	0.8505141146731063			
SIM translation stage pos (mm)	-233.592463	250.466033080201			
SIM translation stage offset (mm)	0	-0.01005468664627074			
Observation start time	207929592.75534	207929591.73032			
Observation start date	2004-08-03T14:13:13	2004-08-03T14:13:11			
Observation end time	207951523.656317	207951522.6313			
Observation end date	2004-08-03T20:18:44	2004-08-03T20:18:42			
Read mode	TIMED	TIMED			

## 2.3 Aspect



## 2.4 Star Slots

## 2.5 FID Slots



## A Summary

### A.1 Status

V&V Scientist	Jen Lauer
V&V Date (YYYY-MM-DD)	2006.04.27
V&V Edition	1
V&V Disposition and Status	OK
V&V Charge Time	8.24319996

### A.2 Comments

The ACIS focal plane temperature was above calibration limits for the entire observation.