

# V&V Reference Report

## L2 ASCDS Version : 7.6.7.1

Observation 60048 - L2 Version 001  
Chandra X-Ray Center

L2 Processing Date : Apr 17 2006

## Contents

<b>1</b>	<b>Front</b>	<b>2</b>
<b>2</b>	<b>OBI</b>	<b>3</b>
2.1	OBI . . . . .	3
2.1.1	Images . . . . .	3
2.1.2	Bias . . . . .	3
2.1.3	Parameters . . . . .	4
2.1.4	Events . . . . .	4
2.2	Compared Parameters . . . . .	5
2.3	Aspect . . . . .	6
2.4	Star Slots . . . . .	8
2.5	FID Slots . . . . .	8
<b>A</b>	<b>Summary</b>	<b>9</b>
A.1	Status . . . . .	9
A.2	Comments . . . . .	9

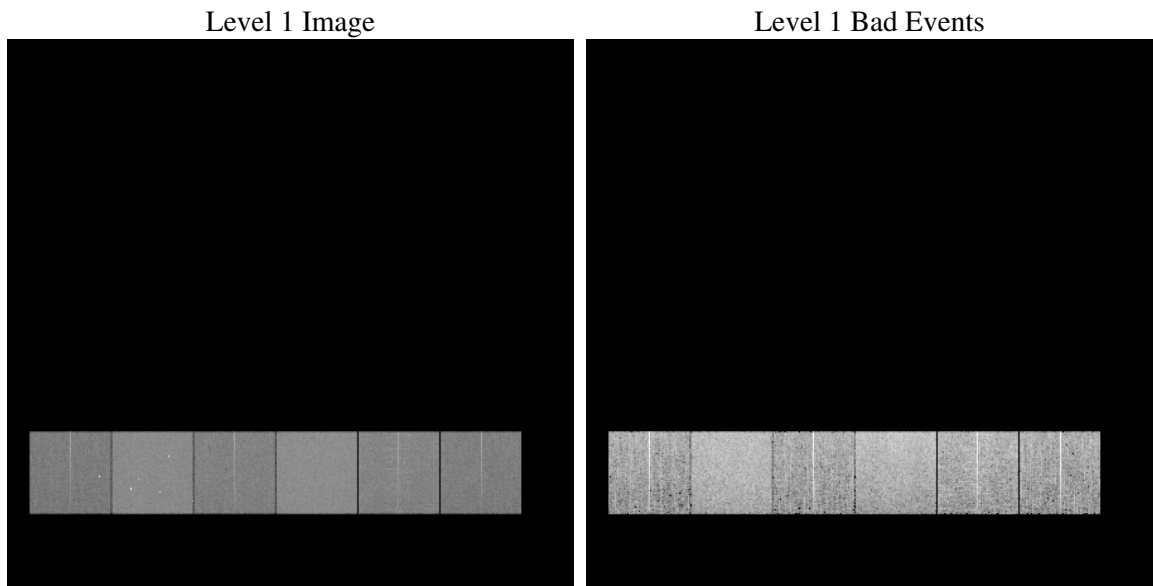
# 1 Front

seq_num	&#160
obs_id	60048
title	ACIS-456789 diagnostics
observer	CHANDRA engineering request/realtime commanding
object	&#160
dtcycle	0
cycle	P
ra_targ	0.0
dec_targ	0.0
ra_nom	114.99730041646
dec_nom	39.02873914053
roll_nom	69.870804812708
revision	2
ontime	7798.3999709487
livetime	7699.6519348838
ontime4	5247.7614738345
ontime5	7798.3999709487
ontime6	5769.5569460988
ontime7	7798.3999709487
ontime8	5989.9427542388
ontime9	5503.7982229292
l2events	1046734

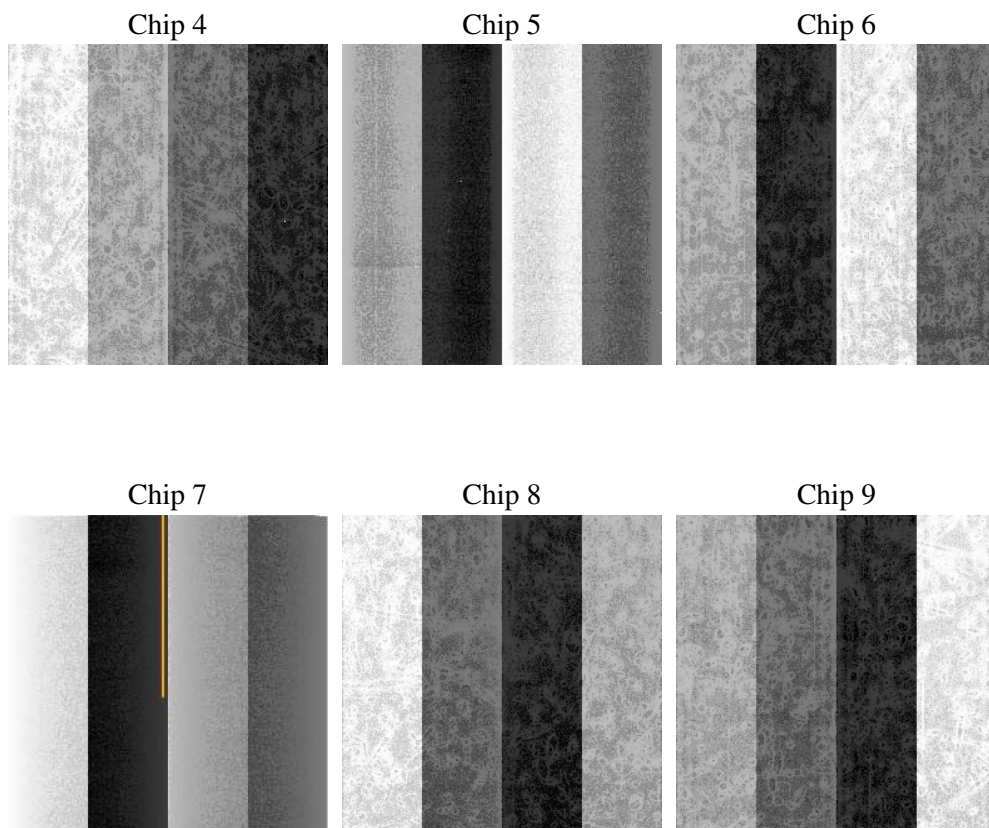
## 2 OBI

### 2.1 OBI

#### 2.1.1 Images



#### 2.1.2 Bias



### 2.1.3 Parameters

obi_num	0
ascdsver	7.6.7.1
caldsver	3.2.1
date	2006-04-17T23:40:55
revision	2

sched_exp_time	0.0
ontime	7801.0848280787
ontime4	5250.4463309646
ontime5	7801.0848280787
ontime6	5772.2418032289
ontime7	7801.0848280787
ontime8	5992.6276113689
ontime9	5506.4830800593
l1events	1413258

### 2.1.4 Events

	ccd 4	ccd 5	ccd 6	ccd 7	ccd 8	ccd 9
level 1 events	188159	280433	214657	295064	234786	200159
rejected events	42346	61049	43716	58695	50625	43662
rejected %	22%	21%	20%	19%	21%	21%

	ccd 4	ccd 5	ccd 6	ccd 7	ccd 8	ccd 9
grade 0 events	84776	28752	92880	41329	99921	85673
	45%	10%	43%	14%	42%	42%
grade 1 events	648	152	496	127	517	572
	0%	0%	0%	0%	0%	0%
grade 2 events	23057	100359	29422	70970	32242	27123
	12%	35%	13%	24%	13%	13%
grade 3 events	9747	7452	10760	17139	11982	9953
	5%	2%	5%	5%	5%	4%
grade 4 events	9616	7432	10759	17170	12009	10027
	5%	2%	5%	5%	5%	5%
grade 5 events	2575	6322	2907	6956	3671	2933
	1%	2%	1%	2%	1%	1%
grade 6 events	18617	75482	27120	89861	28007	23817
	9%	26%	12%	30%	11%	11%
grade 7 events	39123	54482	40313	51512	46437	40061
	20%	19%	18%	17%	19%	20%

## 2.2 Compared Parameters

Parameter	Planned	Actual	Parameter	Planned	Actual
Instrument	ACIS	ACIS	Obspar format version number	6	6
Detector	ACIS-456789	ACIS-456789	Obspar file type	PREDICTED	ACTUAL
Grating	NONE	NONE	Obspar update status	NONE	UPDATED
Data mode	FAINT	FAINT	On-chip summing requested	N	N
Observation mode	SECONDARY	SECONDARY	Subarray requested	NONE	NONE
Pointing RA	0	114.9973004164639	Alternating exposures requested	N	N
Pointing Dec	0	39.02873914053018	Primary exposure time	3.2	3.2
Pointing Roll	0.0	69.87080481270843			
SIM focus pos (mm)	-0.684267	-0.6828225247311905			
SIM defocus (mm)	0	0.8505141146731063			
SIM translation stage pos (mm)	-190.132523	250.466033080201			
SIM translation stage offset (mm)	0	-0.01005468664627074			
Observation start time	211316402.006119	211316400.98113			
Observation start date	2004-09-11T19:00:02	2004-09-11T19:00:00			
Observation end time	211336278.807006	211336277.78201			
Observation end date	2004-09-12T00:31:19	2004-09-12T00:31:17			
Read mode	TIMED	TIMED			

## 2.3 Aspect



## 2.4 Star Slots

## 2.5 FID Slots



## A Summary

### A.1 Status

V&V Scientist	Jen Lauer
V&V Date (YYYY-MM-DD)	2006.04.18
V&V Edition	1
V&V Disposition and Status	OK
V&V Charge Time	7.79839997

### A.2 Comments