

# V&V Reference Report

## L2 ASCDS Version : 7.6.7

Observation 59808 - L2 Version 002  
Chandra X-Ray Center

L2 Processing Date: Feb 22 2006

## Contents

<b>1</b>	<b>Front</b>	<b>2</b>
<b>2</b>	<b>OBI</b>	<b>3</b>
2.1	OBI . . . . .	3
2.1.1	Images . . . . .	3
2.1.2	Bias . . . . .	3
2.1.3	Parameters . . . . .	4
2.1.4	Events . . . . .	4
2.2	Compared Parameters . . . . .	5
2.3	Aspect . . . . .	6
2.4	Star Slots . . . . .	8
2.5	FID Slots . . . . .	8
<b>A</b>	<b>Summary</b>	<b>9</b>
A.1	Status . . . . .	9
A.2	Comments . . . . .	9

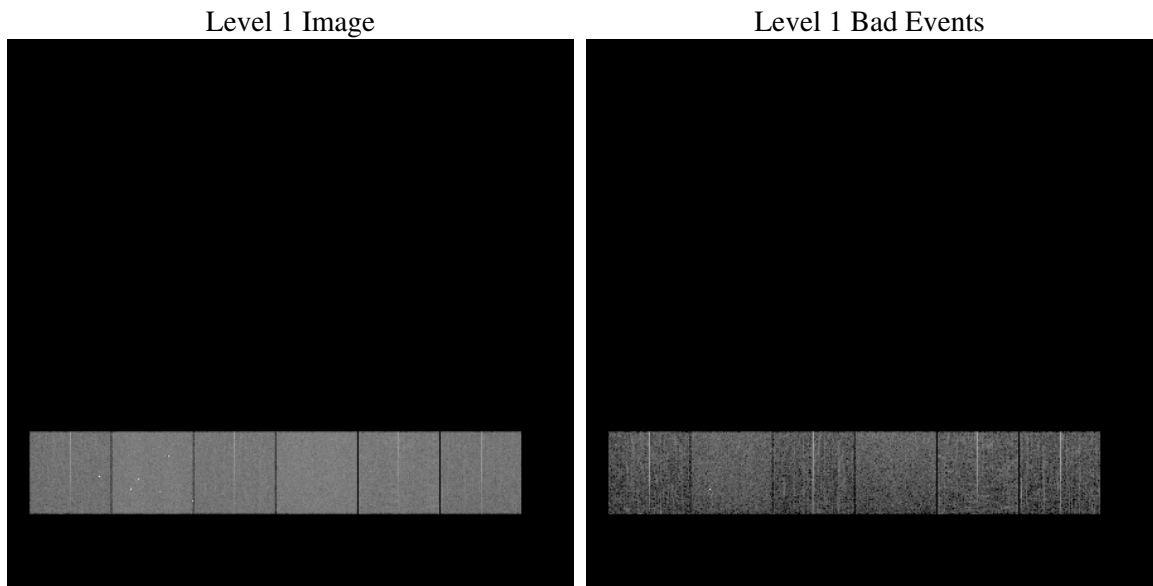
# 1 Front

seq_num	&#160
obs_id	59808
title	ACIS-456789 diagnostics
observer	CHANDRA engineering request/realtime commanding
object	&#160
dtcycle	0
cycle	P
ra_targ	0.0
dec_targ	0.0
ra_nom	155.49092246106
dec_nom	11.727186203318
roll_nom	75.258441941736
revision	2
ontime	4889.3088690937
livetime	4827.3974962048
ontime4	3852.3230257928
ontime5	4889.349909097
ontime6	4208.7882974148
ontime7	4889.3088690937
ontime8	4192.6653071344
ontime9	3991.5202980638
l2events	651920

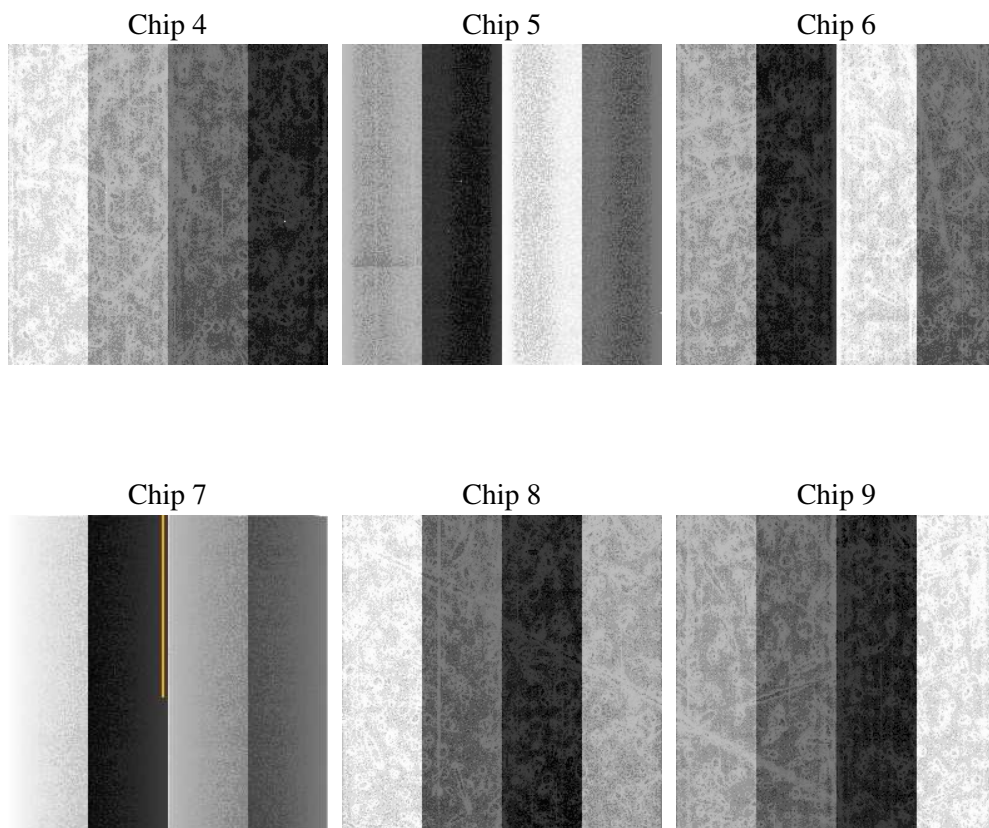
## 2 OBI

### 2.1 OBI

#### 2.1.1 Images



#### 2.1.2 Bias



### 2.1.3 Parameters

obi_num	0
ascdsver	7.6.7
caldbver	3.2.1
date	2006-02-23T02:08:01
revision	2

sched_exp_time	0.0
ontime	4890.6711110473
ontime4	3853.5621477365
ontime5	4890.6711110473
ontime6	4210.0684593618
ontime7	4890.6711110473
ontime8	4193.8633891046
ontime9	3992.9235800207
l1events	892640

### 2.1.4 Events

	ccd 4	ccd 5	ccd 6	ccd 7	ccd 8	ccd 9
level 1 events	128701	163090	144842	169879	151587	134541
rejected events	30428	37444	30452	33928	34044	30537
rejected %	23%	22%	21%	19%	22%	22%

	ccd 4	ccd 5	ccd 6	ccd 7	ccd 8	ccd 9
grade 0 events	57195	15351	62458	23922	63238	57177
	44%	9%	43%	14%	41%	42%
grade 1 events	420	141	313	58	360	315
	0%	0%	0%	0%	0%	0%
grade 2 events	15454	57606	19775	40681	20660	17882
	12%	35%	13%	23%	13%	13%
grade 3 events	6604	4160	7217	10069	7709	6608
	5%	2%	4%	5%	5%	4%
grade 4 events	6332	4218	7102	9800	7714	6685
	4%	2%	4%	5%	5%	4%
grade 5 events	1728	4148	1995	4111	2328	2028
	1%	2%	1%	2%	1%	1%
grade 6 events	12688	44311	17838	51479	18222	15652
	9%	27%	12%	30%	12%	11%
grade 7 events	28280	33155	28144	29759	31356	28194
	21%	20%	19%	17%	20%	20%

## 2.2 Compared Parameters

Parameter	Planned	Actual	Parameter	Planned	Actual
Instrument	ACIS	ACIS	Obspar format version number	6	6
Detector	ACIS-456789	ACIS-456789	Obspar file type	PREDICTED	ACTUAL
Grating	NONE	NONE	Obspar update status	NONE	UPDATED
Data mode	FAINT	FAINT	On-chip summing requested	N	N
Observation mode	SECONDARY	SECONDARY	Subarray requested	NONE	NONE
Pointing RA	0	155.4909224610559	Alternating exposures requested	N	N
Pointing Dec	0	11.7271862033176	Primary exposure time	3.2	3.2
Pointing Roll	0.0	75.25844194173568			
SIM focus pos (mm)	-0.684267	-0.7809083437167272			
SIM defocus (mm)	0	0.7524282956875696			
SIM translation stage pos (mm)	-190.132523	250.466033080201			
SIM translation stage offset (mm)	0	-0.01005468664627074			
Observation start time	224341221.091216	224341220.06622			
Observation start date	2005-02-09T13:00:21	2005-02-09T13:00:20			
Observation end time	224358988.442019	224358987.41703			
Observation end date	2005-02-09T17:56:28	2005-02-09T17:56:27			
Read mode	TIMED	TIMED			

## 2.3 Aspect



## **2.4 Star Slots**

## **2.5 FID Slots**



## A Summary

### A.1 Status

V&V Scientist	Jen Lauer
V&V Date (YYYY-MM-DD)	2006.02.23
V&V Edition	1
V&V Disposition and Status	OK
V&V Charge Time	4.88930886

### A.2 Comments