

V&V Reference Report

L2 ASCDS Version : 7.6.7

Observation 59728 - L2 Version 002
Chandra X-Ray Center

L2 Processing Date: Feb 27 2006

Contents

1	Front	2
2	OBI	3
2.1	OBI	3
2.1.1	Images	3
2.1.2	Bias	3
2.1.3	Parameters	4
2.1.4	Events	4
2.2	Compared Parameters	5
2.3	Aspect	6
2.4	Star Slots	8
2.5	FID Slots	8
A	Summary	9
A.1	Status	9
A.2	Comments	9

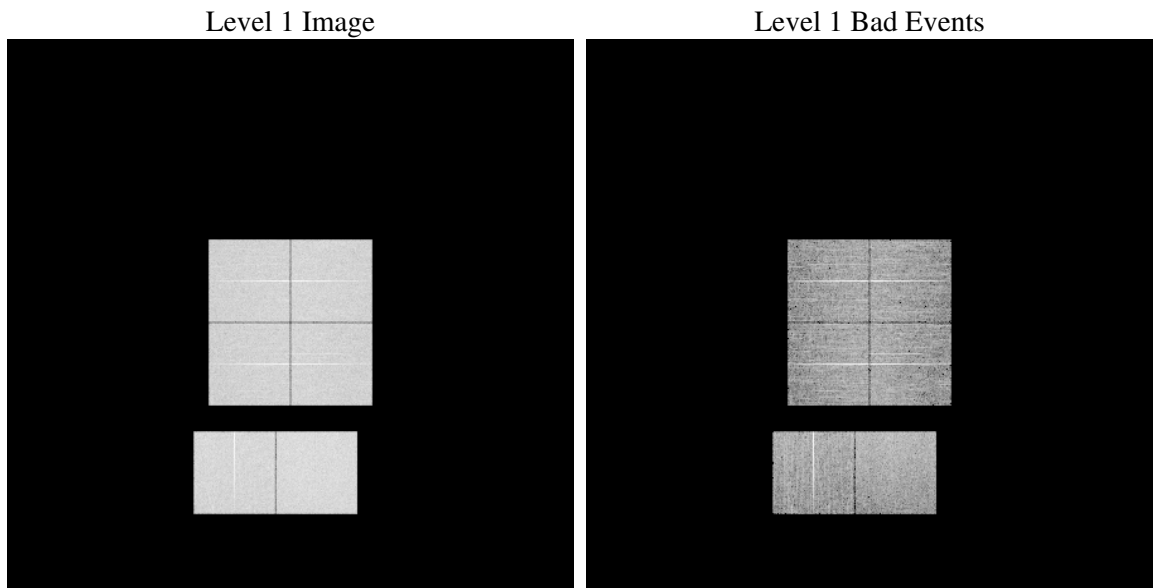
1 Front

seq_num	
obs_id	59728
title	ACIS-012367 diagnostics
observer	CHANDRA engineering request/realtime commanding
object	
dtcycle	0
cycle	P
ra_targ	0.0
dec_targ	0.0
ra_nom	187.97141348599
dec_nom	8.0036027258852
roll_nom	140.12368274103
revision	2
ontime	8284.2455205917
livetime	8179.3454156362
ontime0	7474.0431871712
ontime1	7752.8080817759
ontime2	7256.9801678658
ontime3	7386.454679817
ontime6	7885.7699143589
ontime7	8284.2455205917
l2events	1113845

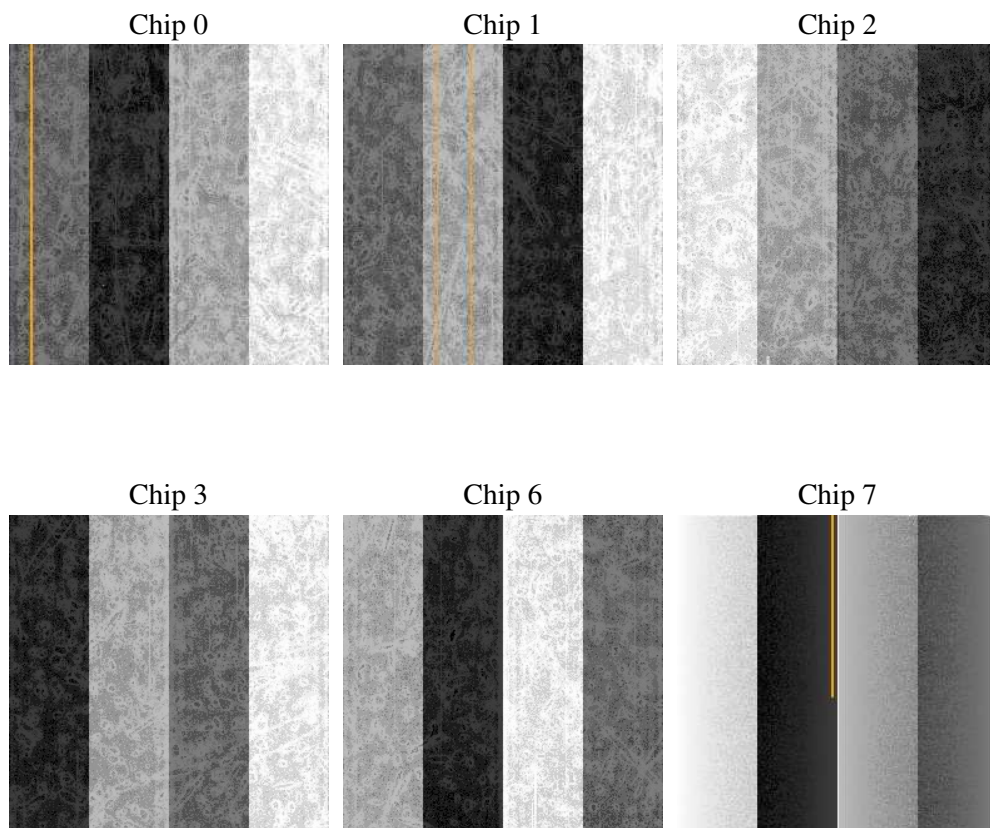
2 OBI

2.1 OBI

2.1.1 Images



2.1.2 Bias



2.1.3 Parameters

obi_num	0
ascdsver	7.6.7
caldbver	3.2.1
date	2006-02-27T18:43:39
revision	2

sched_exp_time	0.0
ontime	8287.2507759631
ontime0	7477.0074025393
ontime1	7755.7312571406
ontime2	7259.8623032272
ontime3	7389.5009751916
ontime6	7888.6110097468
ontime7	8287.2507759631
l1events	1491585

2.1.4 Events

	ccd 0	ccd 1	ccd 2	ccd 3	ccd 6	ccd 7
level 1 events	235737	244108	233036	237692	261587	279425
rejected events	49934	51386	51568	52092	55945	59210
rejected %	21%	21%	22%	21%	21%	21%

	ccd 0	ccd 1	ccd 2	ccd 3	ccd 6	ccd 7
grade 0 events	101987	105018	100972	103750	111131	37224
	43%	43%	43%	43%	42%	13%
grade 1 events	582	550	688	666	554	105
	0%	0%	0%	0%	0%	0%
grade 2 events	32415	34579	30899	31773	35478	66624
	13%	14%	13%	13%	13%	23%
grade 3 events	12209	12371	11941	12206	12850	15328
	5%	5%	5%	5%	4%	5%
grade 4 events	12128	12458	12132	12182	13134	15288
	5%	5%	5%	5%	5%	5%
grade 5 events	3192	3389	3011	3270	3613	6865
	1%	1%	1%	1%	1%	2%
grade 6 events	27128	28382	25604	25774	33135	85823
	11%	11%	10%	10%	12%	30%
grade 7 events	46096	47361	47789	48071	51692	52168
	19%	19%	20%	20%	19%	18%

2.2 Compared Parameters

Parameter	Planned	Actual	Parameter	Planned	Actual
Instrument	ACIS	ACIS	Obspar format version number	6	6
Detector	ACIS-012367	ACIS-012367	Obspar file type	PREDICTED	ACTUAL
Grating	NONE	NONE	Obspar update status	NONE	UPDATED
Data mode	FAINT	FAINT	On-chip summing requested	N	N
Observation mode	SECONDARY	SECONDARY	Subarray requested	NONE	NONE
Pointing RA	0	187.9714134859852	Alternating exposures requested	N	N
Pointing Dec	0	8.00360272588518	Primary exposure time	3.2	3.2
Pointing Roll	0.0	140.123682741031			
SIM focus pos (mm)	-0.782348	-0.7809083437167272			
SIM defocus (mm)	0	0.7524282956875696			
SIM translation stage pos (mm)	-233.592463	250.466033080201			
SIM translation stage offset (mm)	0	-0.01005468664627074			
Observation start time	227808958.198296	227808957.1733			
Observation start date	2005-03-21T16:15:58	2005-03-21T16:15:57			
Observation end time	227831167.899304	227831166.87431			
Observation end date	2005-03-21T22:26:08	2005-03-21T22:26:06			
Read mode	TIMED	TIMED			

2.3 Aspect

2.4 Star Slots

2.5 FID Slots

A Summary

A.1 Status

V&V Scientist	Beth Sundheim
V&V Date (YYYY-MM-DD)	2006.02.27
V&V Edition	1
V&V Disposition and Status	OK
V&V Charge Time	8.28424552

A.2 Comments