

V&V Reference Report

L2 ASCDS Version : 7.6.7

Observation 59678 - L2 Version 002
Chandra X-Ray Center

L2 Processing Date: Mar 2 2006

Contents

1	Front	2
2	OBI	3
2.1	OBI	3
2.1.1	Images	3
2.1.2	Bias	3
2.1.3	Parameters	4
2.1.4	Events	4
2.2	Compared Parameters	5
2.3	Aspect	6
2.4	Star Slots	8
2.5	FID Slots	8
A	Summary	9
A.1	Status	9
A.2	Comments	9

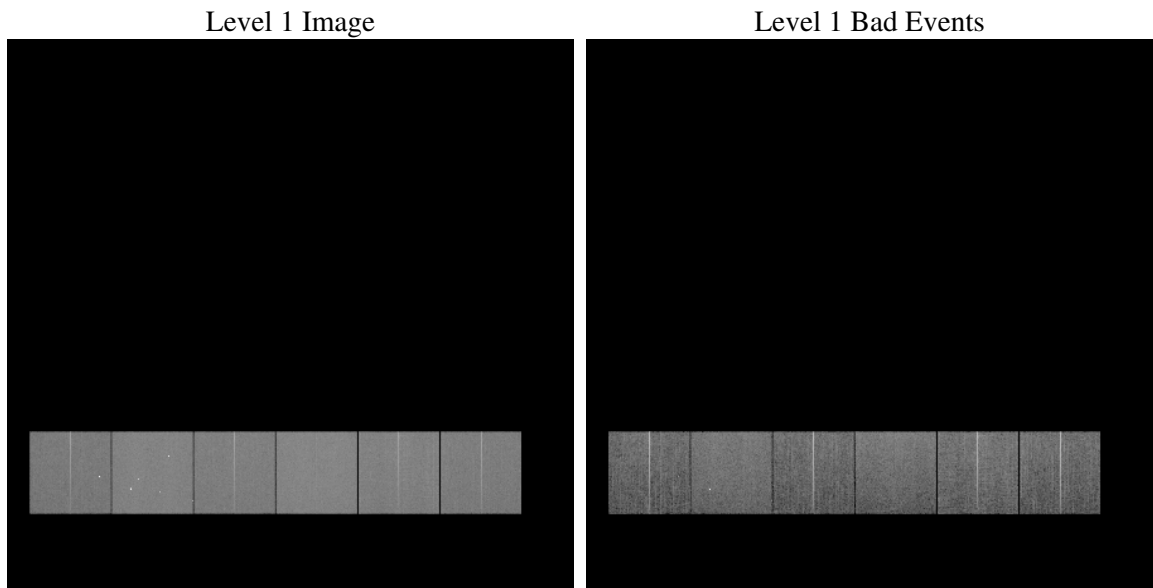
1 Front

seq_num	
obs_id	59678
title	ACIS-456789 diagnostics
observer	CHANDRA engineering request/realtime commanding
object	
dtcycle	0
cycle	P
ra_targ	0.0
dec_targ	0.0
ra_nom	260.97288107432
dec_nom	13.009577649673
roll_nom	121.09194415193
revision	2
ontime	15793.630637378
livetime	15593.642176464
ontime4	12497.674417764
ontime5	15793.671677381
ontime6	13703.278748631
ontime7	15793.630637378
ontime8	13965.879715025
ontime9	13323.960883498
l2events	2017920

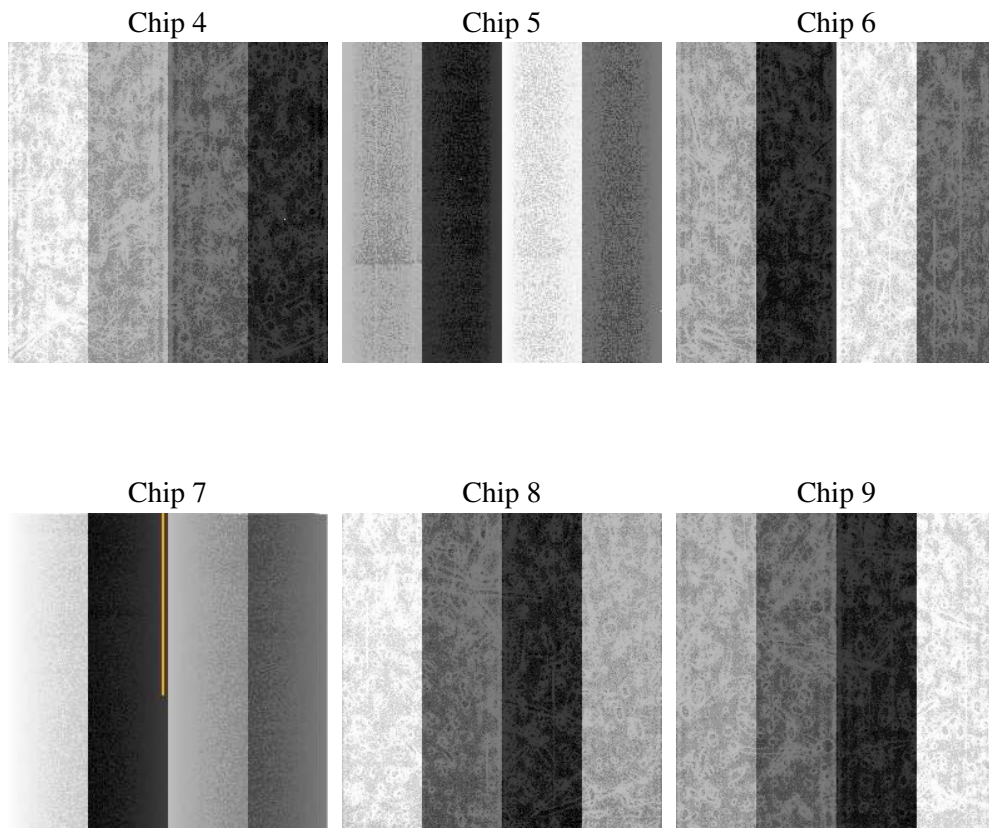
2 OBI

2.1 OBI

2.1.1 Images



2.1.2 Bias



2.1.3 Parameters

obi_num	0
ascdsver	7.6.7
caldsver	3.2.1
date	2006-03-02T16:12:57
revision	2

sched_exp_time	0.0
ontime	15796.684738785
ontime4	12500.605399162
ontime5	15796.684738785
ontime6	13706.250770032
ontime7	15796.684738785
ontime8	13968.76965645
ontime9	13327.056024909
l1events	2823963

2.1.4 Events

	ccd 4	ccd 5	ccd 6	ccd 7	ccd 8	ccd 9
level 1 events	400255	511034	455487	535350	489090	432747
rejected events	101485	124933	104243	116552	119694	105355
rejected %	25%	24%	22%	21%	24%	24%

	ccd 4	ccd 5	ccd 6	ccd 7	ccd 8	ccd 9
grade 0 events	173812	45174	190649	72253	198993	179085
	43%	8%	41%	13%	40%	41%
grade 1 events	1340	1245	1003	195	1114	1107
	0%	0%	0%	0%	0%	0%
grade 2 events	47143	177540	60905	125084	65351	56594
	11%	34%	13%	23%	13%	13%
grade 3 events	20004	11941	22007	30223	24484	21249
	4%	2%	4%	5%	5%	4%
grade 4 events	19708	11537	21767	30147	24150	21084
	4%	2%	4%	5%	4%	4%
grade 5 events	5859	12232	6784	13821	8334	7035
	1%	2%	1%	2%	1%	1%
grade 6 events	38200	139977	56003	161167	56521	49460
	9%	27%	12%	30%	11%	11%
grade 7 events	94189	111388	96369	102460	110143	97133
	23%	21%	21%	19%	22%	22%

2.2 Compared Parameters

Parameter	Planned	Actual	Parameter	Planned	Actual
Instrument	ACIS	ACIS	Obspar format version number	6	6
Detector	ACIS-456789	ACIS-456789	Obspar file type	PREDICTED	ACTUAL
Grating	NONE	NONE	Obspar update status	NONE	UPDATED
Data mode	FAINT	FAINT	On-chip summing requested	N	N
Observation mode	SECONDARY	SECONDARY	Subarray requested	NONE	NONE
Pointing RA	0	260.9728810743245	Alternating exposures requested	N	N
Pointing Dec	0	13.00957764967282	Primary exposure time	3.2	3.2
Pointing Roll	0.0	121.0919441519324			
SIM focus pos (mm)	-0.684267	-0.7809083437167272			
SIM defocus (mm)	0	0.7524282956875696			
SIM translation stage pos (mm)	-190.132523	250.4635187648994			
SIM translation stage offset (mm)	0	-0.007540371344731511			
Observation start time	231189724.051919	231189723.02691			
Observation start date	2005-04-29T19:22:04	2005-04-29T19:22:03			
Observation end time	231213376.952996	231213375.92799			
Observation end date	2005-04-30T01:56:17	2005-04-30T01:56:15			
Read mode	TIMED	TIMED			

2.3 Aspect

2.4 Star Slots

2.5 FID Slots

A Summary

A.1 Status

V&V Scientist	Beth Sundheim
V&V Date (YYYY-MM-DD)	2006.03.02
V&V Edition	1
V&V Disposition and Status	OK
V&V Charge Time	15.7936306

A.2 Comments