

V&V Reference Report

L2 ASCDS Version : 7.6.7.1

Observation 59578 - L2 Version 002
Chandra X-Ray Center

L2 Processing Date : Mar 14 2006

Contents

| | | |
|----------|-------------------------------|----------|
| 1 | Front | 2 |
| 2 | OBI | 3 |
| 2.1 | OBI | 3 |
| 2.1.1 | Images | 3 |
| 2.1.2 | Bias | 3 |
| 2.1.3 | Parameters | 4 |
| 2.1.4 | Events | 4 |
| 2.2 | Compared Parameters | 5 |
| 2.3 | Aspect | 6 |
| 2.4 | Star Slots | 8 |
| 2.5 | FID Slots | 8 |
| A | Summary | 9 |
| A.1 | Status | 9 |
| A.2 | Comments | 9 |

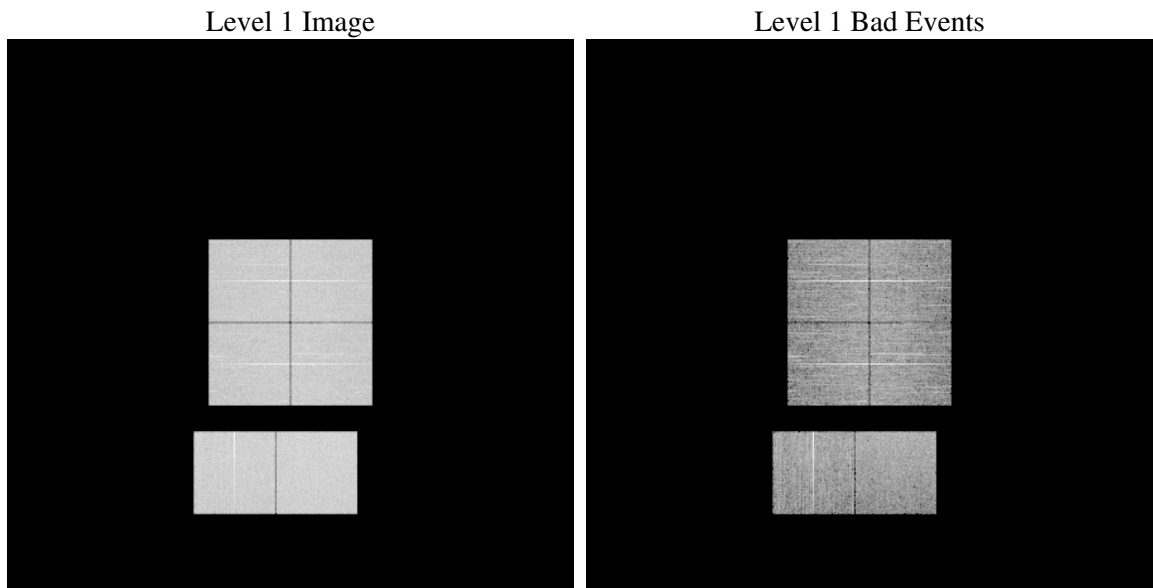
1 Front

| | |
|----------|---|
| seq_num | |
| obs_id | 59578 |
| title | ACIS-012367 diagnostics |
| observer | CHANDRA engineering request/realtime commanding |
| object | |
| dtcycle | 0 |
| cycle | P |
| ra_targ | 0.0 |
| dec_targ | 0.0 |
| ra_nom | 284.47785012268 |
| dec_nom | -2.0180841010895 |
| roll_nom | 186.25642259353 |
| revision | 2 |
| ontime | 7798.3999709487 |
| livetime | 7699.6519348838 |
| ontime0 | 7286.3271336854 |
| ontime1 | 7396.5201041102 |
| ontime2 | 7073.7043223381 |
| ontime3 | 7166.4111229181 |
| ontime6 | 7636.3517057896 |
| ontime7 | 7798.3999709487 |
| l2events | 1011389 |

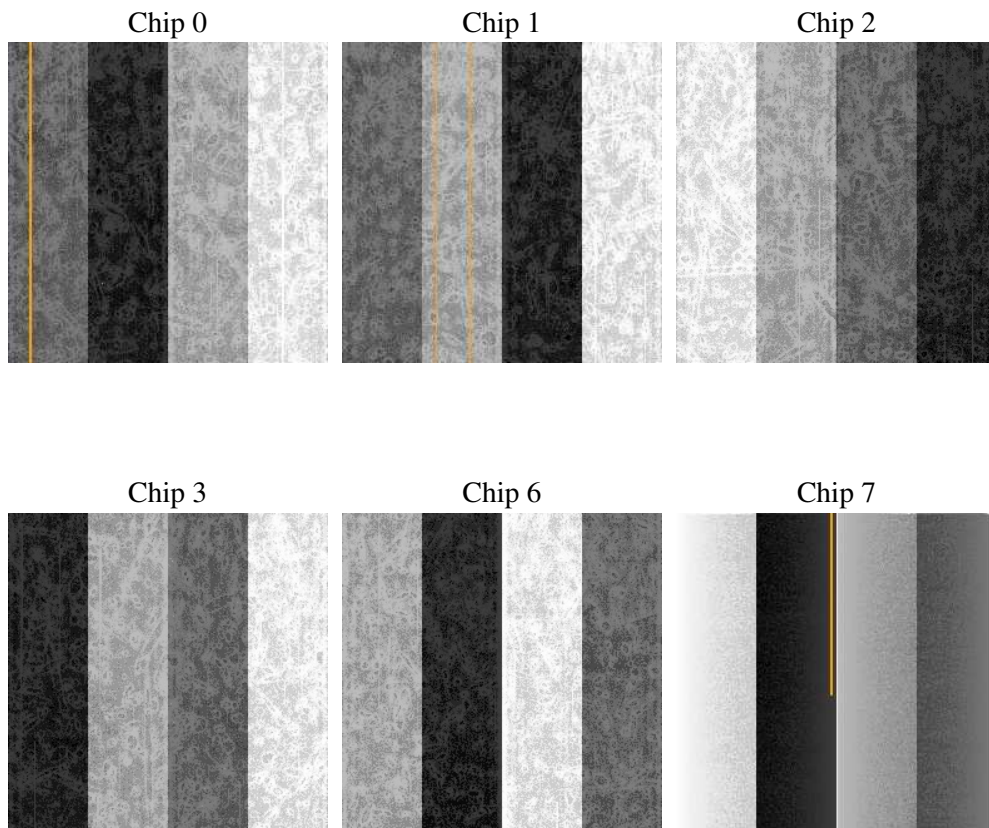
2 OBI

2.1 OBI

2.1.1 Images



2.1.2 Bias



2.1.3 Parameters

| | |
|----------|---------------------|
| obi_num | 0 |
| ascdsver | 7.6.7.1 |
| caldsver | 3.2.1 |
| date | 2006-03-14T21:45:28 |
| revision | 2 |

| | |
|----------------|-----------------|
| sched_exp_time | 0.0 |
| ontime | 7801.0925266743 |
| ontime0 | 7289.0196894109 |
| ontime1 | 7399.2126598358 |
| ontime2 | 7075.1158698499 |
| ontime3 | 7169.1036786437 |
| ontime6 | 7639.0442615151 |
| ontime7 | 7801.0925266743 |
| l1events | 1403145 |

2.1.4 Events

| | ccd 0 | ccd 1 | ccd 2 | ccd 3 | ccd 6 | ccd 7 |
|-----------------|--------|--------|--------|--------|--------|--------|
| level 1 events | 223862 | 227350 | 220784 | 225668 | 247098 | 258383 |
| rejected events | 54584 | 54101 | 54587 | 56695 | 59848 | 59022 |
| rejected % | 24% | 23% | 24% | 25% | 24% | 22% |

| | ccd 0 | ccd 1 | ccd 2 | ccd 3 | ccd 6 | ccd 7 |
|----------------|-------|-------|-------|-------|--------|-------|
| grade 0 events | 92843 | 94076 | 92718 | 94384 | 101448 | 33174 |
| | 41% | 41% | 41% | 41% | 41% | 12% |
| grade 1 events | 610 | 518 | 646 | 643 | 524 | 90 |
| | 0% | 0% | 0% | 0% | 0% | 0% |
| grade 2 events | 29534 | 31182 | 28074 | 28797 | 32503 | 59925 |
| | 13% | 13% | 12% | 12% | 13% | 23% |
| grade 3 events | 11267 | 11273 | 10914 | 11036 | 11692 | 14278 |
| | 5% | 4% | 4% | 4% | 4% | 5% |
| grade 4 events | 11029 | 10905 | 10961 | 11154 | 11713 | 13761 |
| | 4% | 4% | 4% | 4% | 4% | 5% |
| grade 5 events | 3202 | 3455 | 3055 | 3411 | 3812 | 7090 |
| | 1% | 1% | 1% | 1% | 1% | 2% |
| grade 6 events | 24605 | 25813 | 23530 | 23602 | 29894 | 78223 |
| | 10% | 11% | 10% | 10% | 12% | 30% |
| grade 7 events | 50772 | 50128 | 50886 | 52641 | 55512 | 51842 |
| | 22% | 22% | 23% | 23% | 22% | 20% |

2.2 Compared Parameters

| Parameter | Planned | Actual | Parameter | Planned | Actual |
|-----------------------------------|---------------------|----------------------|---------------------------------|-----------|---------|
| Instrument | ACIS | ACIS | Obspar format version number | 6 | 6 |
| Detector | ACIS-012367 | ACIS-012367 | Obspar file type | PREDICTED | ACTUAL |
| Grating | NONE | NONE | Obspar update status | NONE | UPDATED |
| Data mode | FAINT | FAINT | On-chip summing requested | N | N |
| Observation mode | SECONDARY | SECONDARY | Subarray requested | NONE | NONE |
| Pointing RA | 0 | 284.4778501226843 | Alternating exposures requested | N | N |
| Pointing Dec | 0 | -2.018084101089541 | Primary exposure time | 3.2 | 3.2 |
| Pointing Roll | 0.0 | 186.2564225935321 | | | |
| SIM focus pos (mm) | -0.782348 | -0.6828225247311905 | | | |
| SIM defocus (mm) | 0 | 0.8505141146731063 | | | |
| SIM translation stage pos (mm) | -233.592463 | 250.466033080201 | | | |
| SIM translation stage offset (mm) | 0 | -0.01005468664627074 | | | |
| Observation start time | 237137901.823242 | 237137900.79825 | | | |
| Observation start date | 2005-07-07T15:38:22 | 2005-07-07T15:38:20 | | | |
| Observation end time | 237152393.273905 | 237152392.24891 | | | |
| Observation end date | 2005-07-07T19:39:53 | 2005-07-07T19:39:52 | | | |
| Read mode | TIMED | TIMED | | | |

2.3 Aspect

2.4 Star Slots

2.5 FID Slots

A Summary

A.1 Status

| | |
|----------------------------|------------|
| V&V Scientist | Jen Lauer |
| V&V Date (YYYY-MM-DD) | 2006.03.15 |
| V&V Edition | 1 |
| V&V Disposition and Status | OK |
| V&V Charge Time | 7.79839997 |

A.2 Comments