

V&V Reference Report

L2 ASCDS Version : 8.4.3.1

Observation 58958 - L2 Version 2
Chandra X-Ray Center

L2 Processing Date : Apr 2 2012

Contents

1	Front	2
2	OBI	3
2.1	OBI	3
2.1.1	Images	3
2.1.2	Bias	3
2.1.3	Parameters	4
2.1.4	Events	4
2.2	Compared Parameters	5
2.3	Star Slots	6
2.4	FID Slots	6
A	Summary	7
A.1	Status	7
A.2	Comments	7

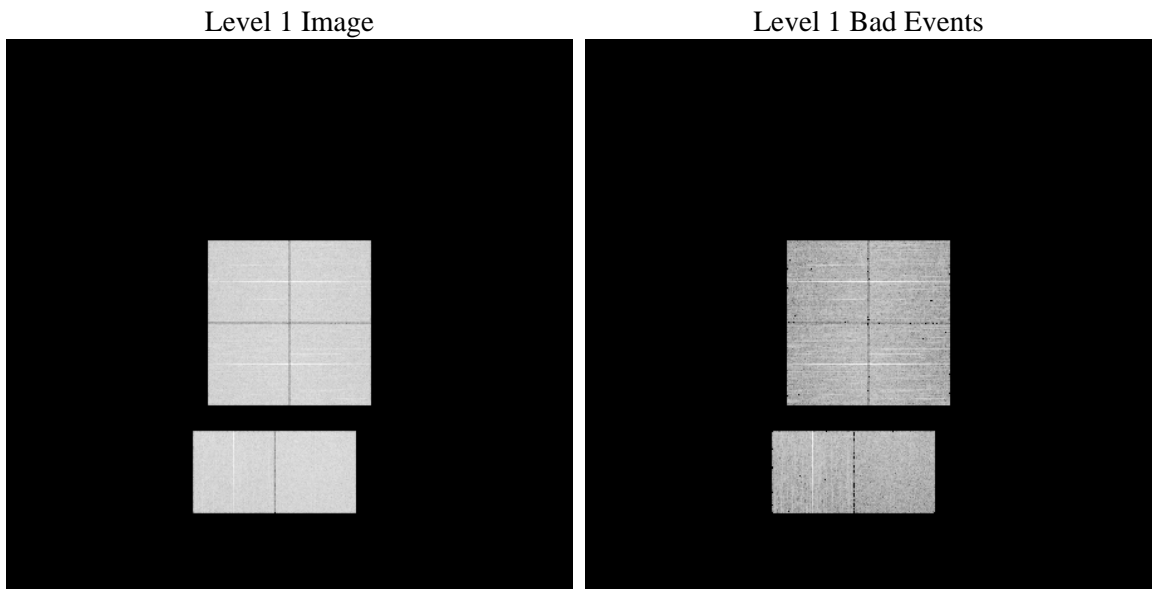
1 Front

seq_num	 	Sequence number
obs_id	58958	Observation id
title	ACIS-012367 diagnostics	Proposal title
observer	CHANDRA engineering request/realtime commanding	Principal investig
object	 	Source name
dtcycle	0	
cycle	P	events from which exps? Prim/Second/Both
ra_targ	0.0	Observer's specified target RA [deg]
dec_targ	0.0	Observer's specified target Dec [deg]
ra_nom	244.976167959	Nominal RA [deg]
dec_nom	11.692836177876	Nominal Dec [deg]
roll_nom	171.69302671926	Nominal Roll [deg]
revision	2	Processing version of data
ontime	6454.3999759555	Sum of GTIs [s]
livetime	6372.6704770869	Livetime [s]
ontime0	6454.3999759555	Sum of GTIs [s]
ontime1	6454.3999759555	Sum of GTIs [s]
ontime2	6454.3999759555	Sum of GTIs [s]
ontime3	6454.3999759555	Sum of GTIs [s]
ontime6	6454.3999759555	Sum of GTIs [s]
ontime7	6454.3999759555	Sum of GTIs [s]
l2events	739783	Number of level 2 events

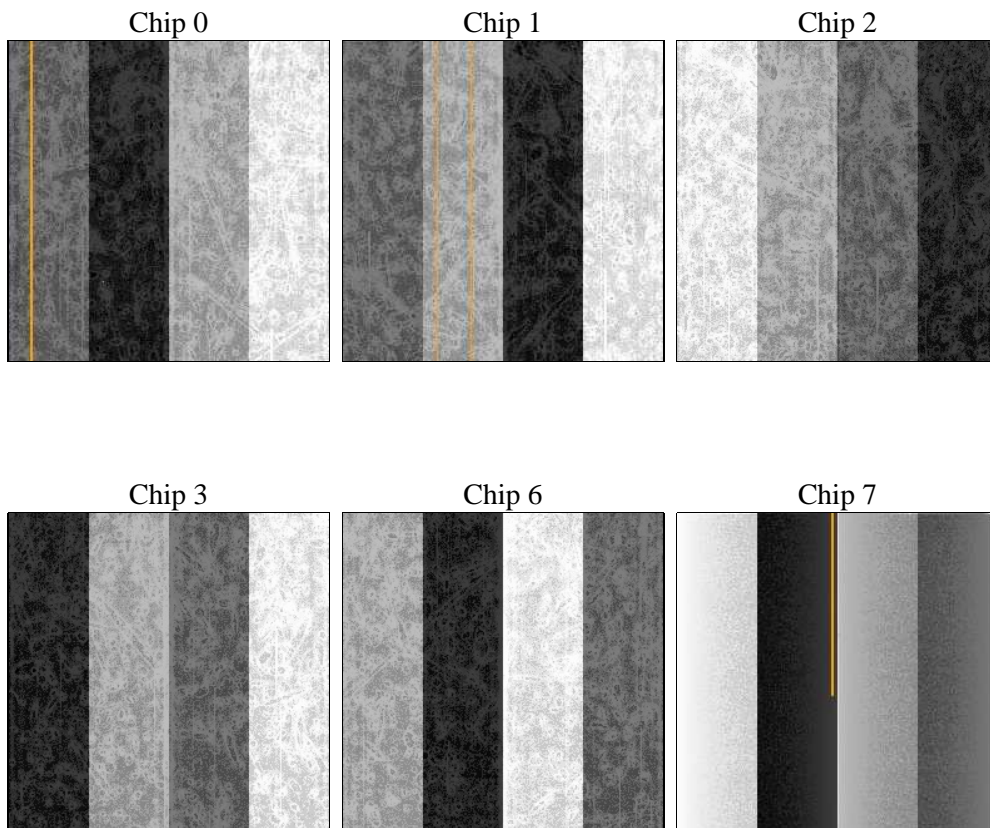
2 OBI

2.1 OBI

2.1.1 Images



2.1.2 Bias



2.1.3 Parameters

obi_num	0	Obi number	sched_exp_time	0.0	[s] Scheduled observation exposure time
ascdsver	8.4.3	Processing system revision	ontime	6454.3999759555	Sum of GTIs [s]
caldsver	4.4.9	 	ontime0	6454.3999759555	Sum of GTIs [s]
date	2012-04-02T04:45:03	Date and time of file creation	ontime1	6454.3999759555	Sum of GTIs [s]
revision	2	Processing version of data	ontime2	6454.3999759555	Sum of GTIs [s]
			ontime3	6454.3999759555	Sum of GTIs [s]
			ontime6	6454.3999759555	Sum of GTIs [s]
			ontime7	6454.3999759555	Sum of GTIs [s]
			l1events	1092790	Number of level 1 events

2.1.4 Events

	ccd 0	ccd 1	ccd 2	ccd 3	ccd 6	ccd 7		ccd 0	ccd 1	ccd 2	ccd 3	ccd 6	ccd 7
level 1 events	173247	177384	180958	180963	185666	194572	grade 0 events	67717	67341	69659	69929	69575	33537
rejected events	48907	52686	55836	54834	55272	46181		39%	37%	38%	38%	37%	17%
rejected %	28%	29%	30%	30%	29%	23%	grade 1 events	446	399	471	444	417	137
								0%	0%	0%	0%	0%	0%
							grade 2 events	21934	22575	21140	21866	22755	32303
								12%	12%	11%	12%	12%	16%
							grade 3 events	8156	8097	8232	8332	8311	14724
								4%	4%	4%	4%	4%	7%
							grade 4 events	7909	7926	8312	8228	8421	14276
								4%	4%	4%	4%	4%	7%
							grade 5 events	2921	3096	2815	3176	3319	7684
								1%	1%	1%	1%	1%	3%
							grade 6 events	18624	18759	17779	17774	21332	53551
								10%	10%	9%	9%	11%	27%
							grade 7 events	45540	49191	52550	51214	51536	38360
								26%	27%	29%	28%	27%	19%

2.2 Compared Parameters

Parameter	Planned	Actual	Parameter	Planned	Actual
Instrument	ACIS	ACIS	Obspar format version number	7	7
Detector	ACIS-012367	ACIS-012367	Obspar file type	PREDICTED	ACTUAL
Grating	NONE	NONE	Obspar update status	NONE	UPDATED
Data mode	FAINT	FAINT	On-chip summing requested	N	N
Observation mode	SECONDARY	SECONDARY	Subarray requested	NONE	NONE
[deg] Pointing RA	0	244.9761679590038	Alternating exposures requested	N	N
[deg] Pointing Dec	0	11.69283617787612	[s] Primary exposure time	3.2	3.2
[deg] Pointing Roll	0.0	171.6930267192607			
[mm] SIM focus pos	-0.782348	-0.6828225247311905			
[mm] SIM defocus	0	0.8505141146731063			
[mm] SIM translation stage pos	-233.592463	250.466033080201			
[mm] SIM translation stage offset	0	-0.01005468664627074			
[s] Observation start time (MET)	264782661.501495	264782660.4765			
Observation start date	2006-05-23T14:44:22	2006-05-23T14:44:20			
[s] Observation end time (MET)	264796958.202162	264796957.17717			
Observation end date	2006-05-23T18:42:38	2006-05-23T18:42:37			
Read mode	TIMED	TIMED			

2.3 Star Slots

2.4 FID Slots

A Summary

A.1 Status

V&V Scientist	Jen Lauer
V&V Date (YYYY-MM-DD)	2012.04.03
V&V Edition	1
V&V Disposition and Status	OK
V&V Charge Time	6.4543999759555

A.2 Comments