

V&V Reference Report

L2 ASCDS Version : 8.1.1

Observation 558 - L2 Version 5

Chandra X-Ray Center

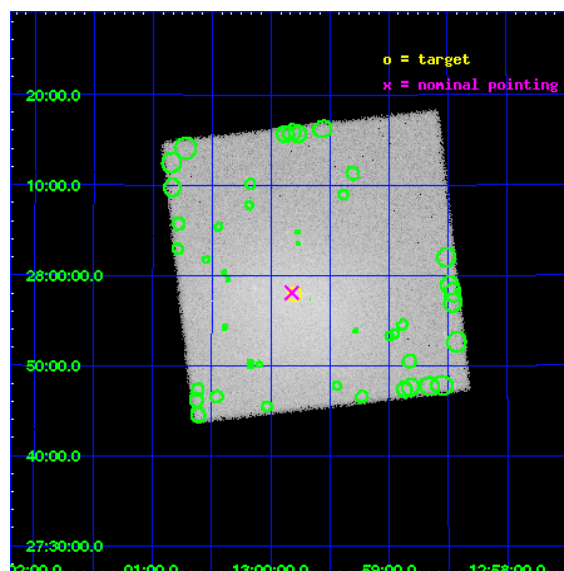
L2 Processing Date : Dec 21 2009

Contents

1	Front	2
2	OBI	3
2.1	OBI	3
2.1.1	Images	3
2.1.2	Parameters	4
2.1.3	Events	4
2.2	Compared Parameters	5
2.3	Aspect	6
2.4	Star Slots	9
2.4.1	Slot 3	9
2.4.2	Slot 4	10
2.4.3	Slot 5	11
2.4.4	Slot 6	12
2.5	FID Slots	13
2.5.1	Slot 1	13
2.5.2	Slot 2	14
3	Point Sources	15
A	Summary	16
A.1	Status	16
A.2	Comments	16

1 Front

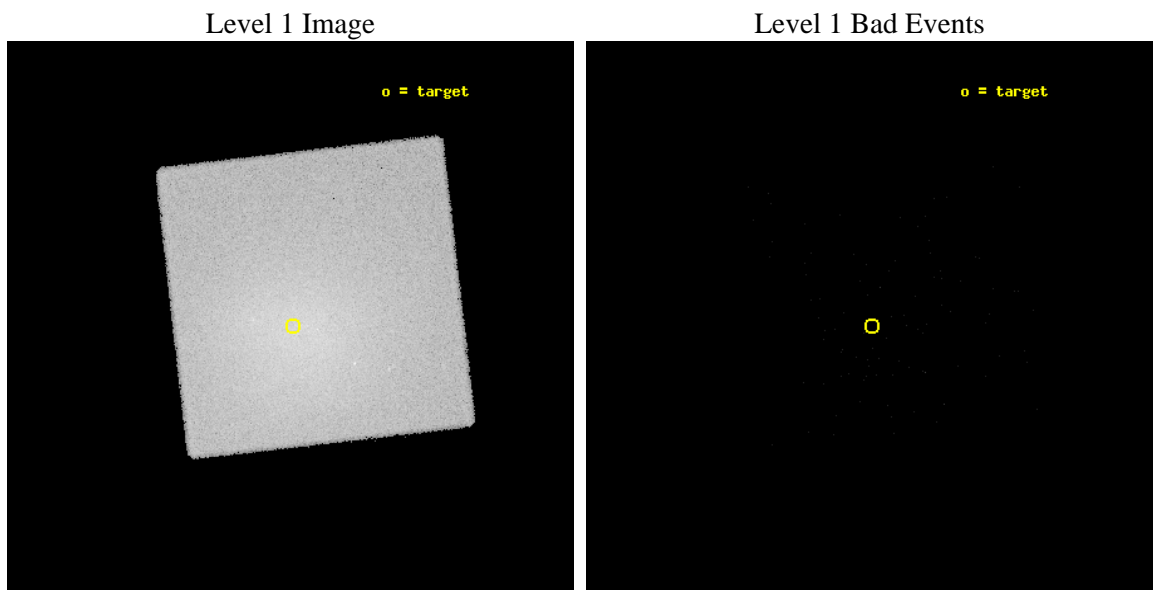
seq_num	890003	Sequence number
obs_id	558	Observation id
title	CALIBRATION OBSERVATION OF AN EXTENDED HARD SOURCE: THE COMA CLUSTER	
observer	Dr. CXC Calibration	Principal investigator
object	COMA CLUSTER	Source name
ra_targ	194.95	Observer's specified target RA
dec_targ	27.966667	Observer's specified target Dec
ra_nom	194.95537715599	Nominal RA
dec_nom	27.967957489186	Nominal Dec
roll_nom	38.409030718953	Nominal Roll
revision	5	Processing version of data
ontime	10274.856621161	[s]
livetime	10200.743379895	Ontime multiplied by DTCOR
l2events	465320	Number of level 2 events



2 OBI

2.1 OBI

2.1.1 Images



2.1.2 Parameters

obi_num	0	Obi number	sched_exp_time	10000.000000	Scheduled observation exposure time
ascdsver	8.1.2	Processing system revision	ontime	10274.856621161	[s]
caldbver	4.1.4	 	ll events	634532	Number of level 1 events
date	2009-12-21T18:51:14	Date and time of file creation			
revision	5	Processing version of data			

2.1.3 Events

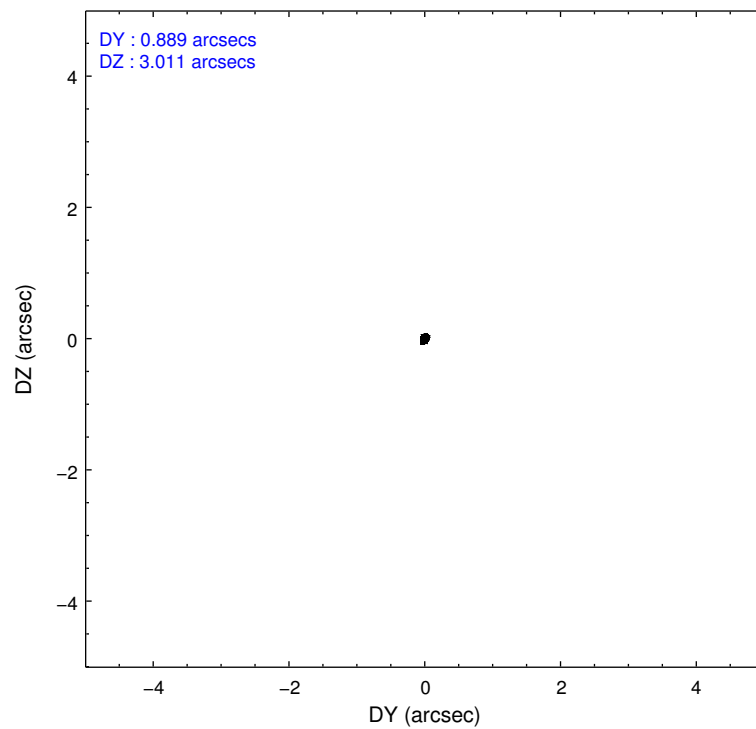
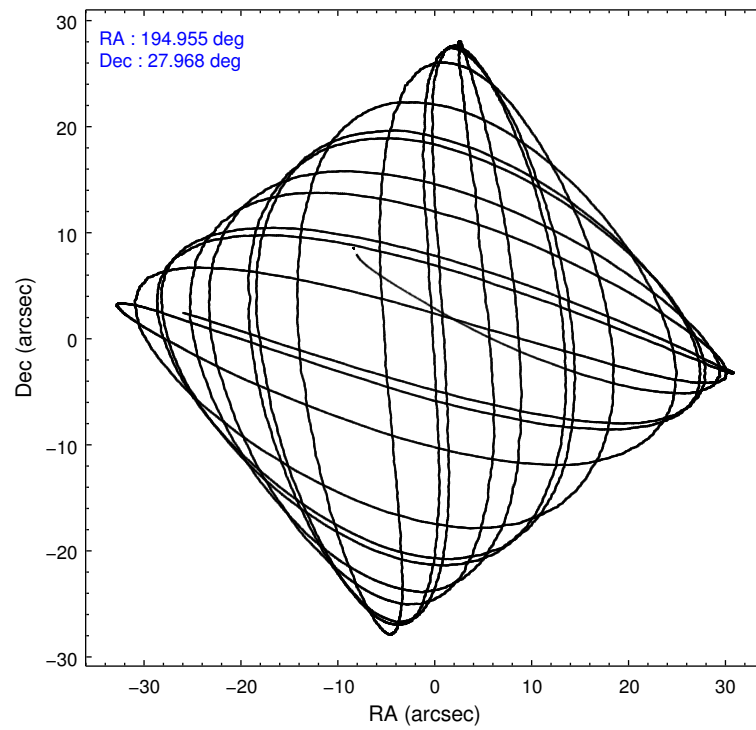
Level 1 Events

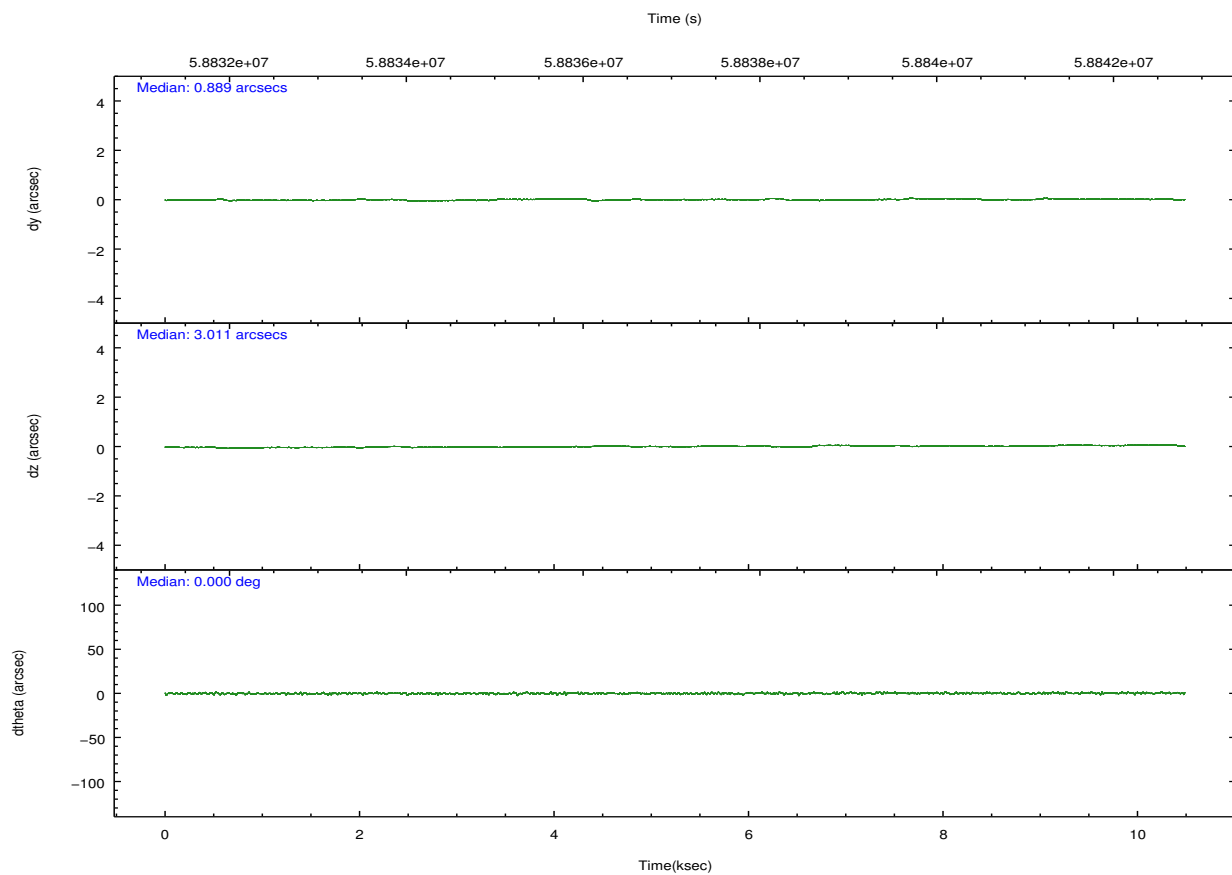
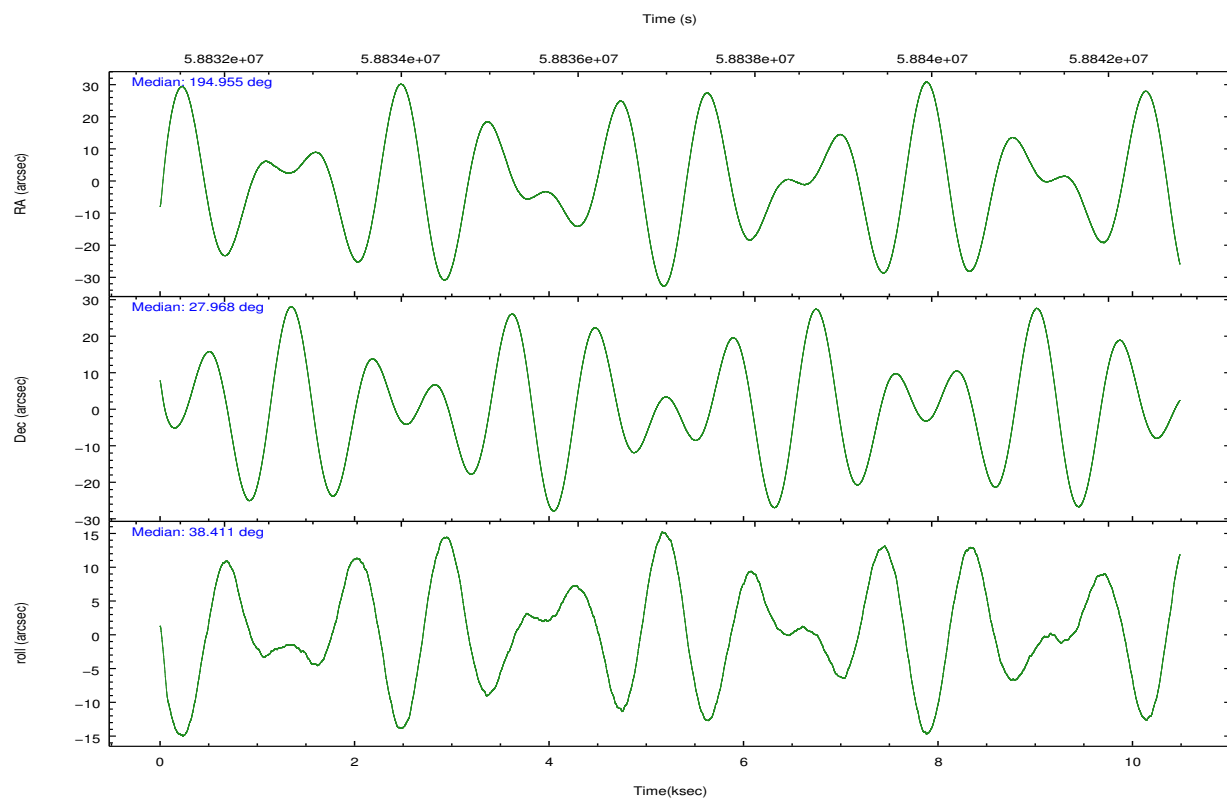
	segment 0
level 1 events	634532
rejected events	2994
rejected %	0%

2.2 Compared Parameters

Parameter	Planned	Actual	Parameter	Planned	Actual
Instrument	HRC	HRC	Obspar format version number	6	6
Detector	HRC-I	HRC-I	Obspar file type	PREDICTED	ACTUAL
Grating	NONE	NONE	Obspar update status	NONE	UPDATED
Data mode	OBSERVING	OBSERVING			
Observation mode	POINTING	POINTING			
Pointing RA	194.943923	194.9553771559943			
Pointing Dec	27.942368	27.967957489186			
Pointing Roll	38.509891	38.40903071895345			
SIM focus pos (mm)	-1.040293	-1.038866356238299			
SIM defocus (mm)	0	0.001426264420575141			
SIM translation stage pos (mm)	119.402704	115.2788422612244			
SIM translation stage offset (mm)	7.58279	11.70664663037712			
Observation start time	58832284.184000	58831617.856963			
Observation start date	1999-11-12T22:17:00	1999-11-12T22:06:57			
Observation end time	58842284.184000	58842858.007369			
Observation end date	1999-11-13T01:03:40	1999-11-13T01:14:18			

2.3 Aspect



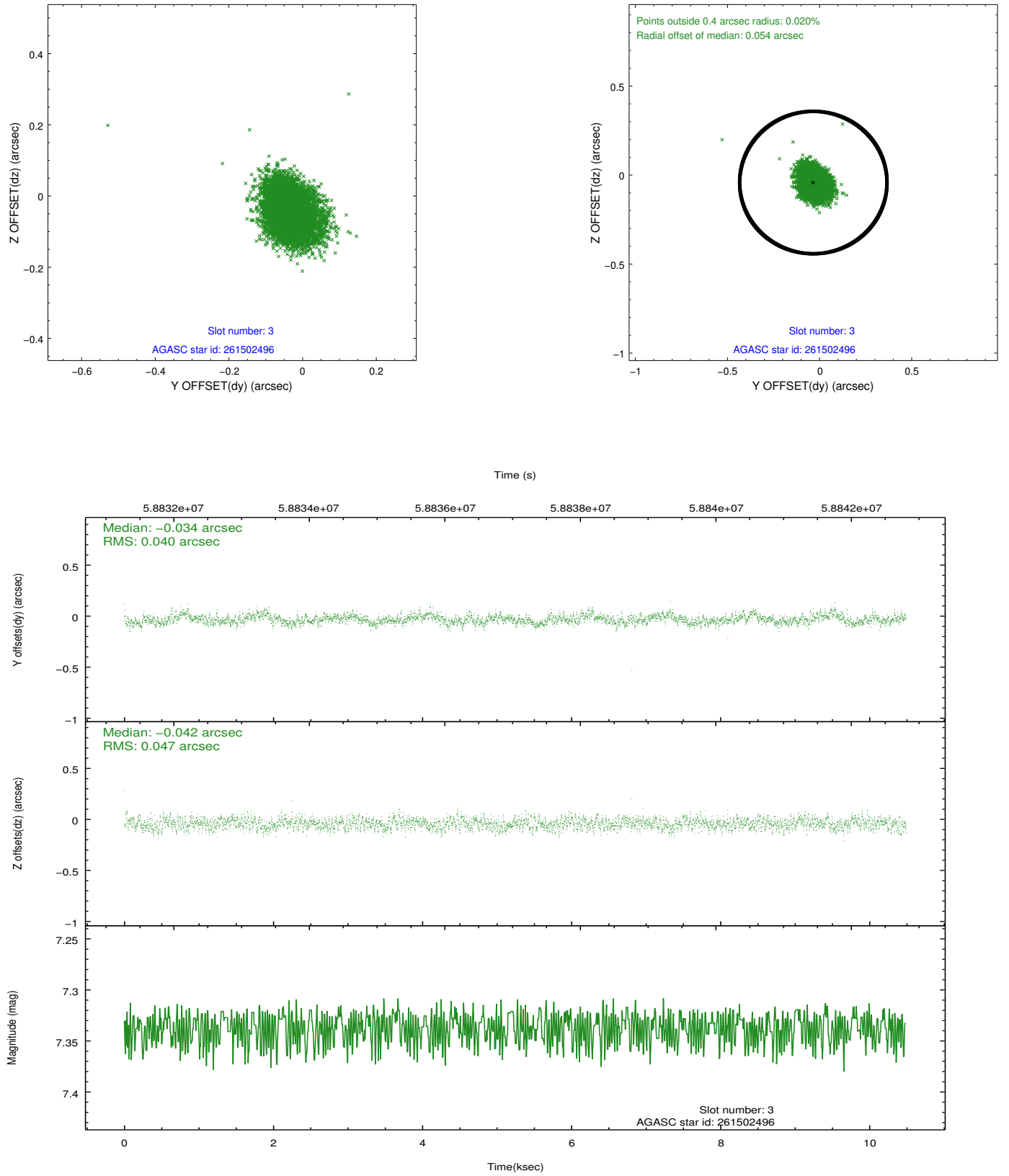


Slot Statistics

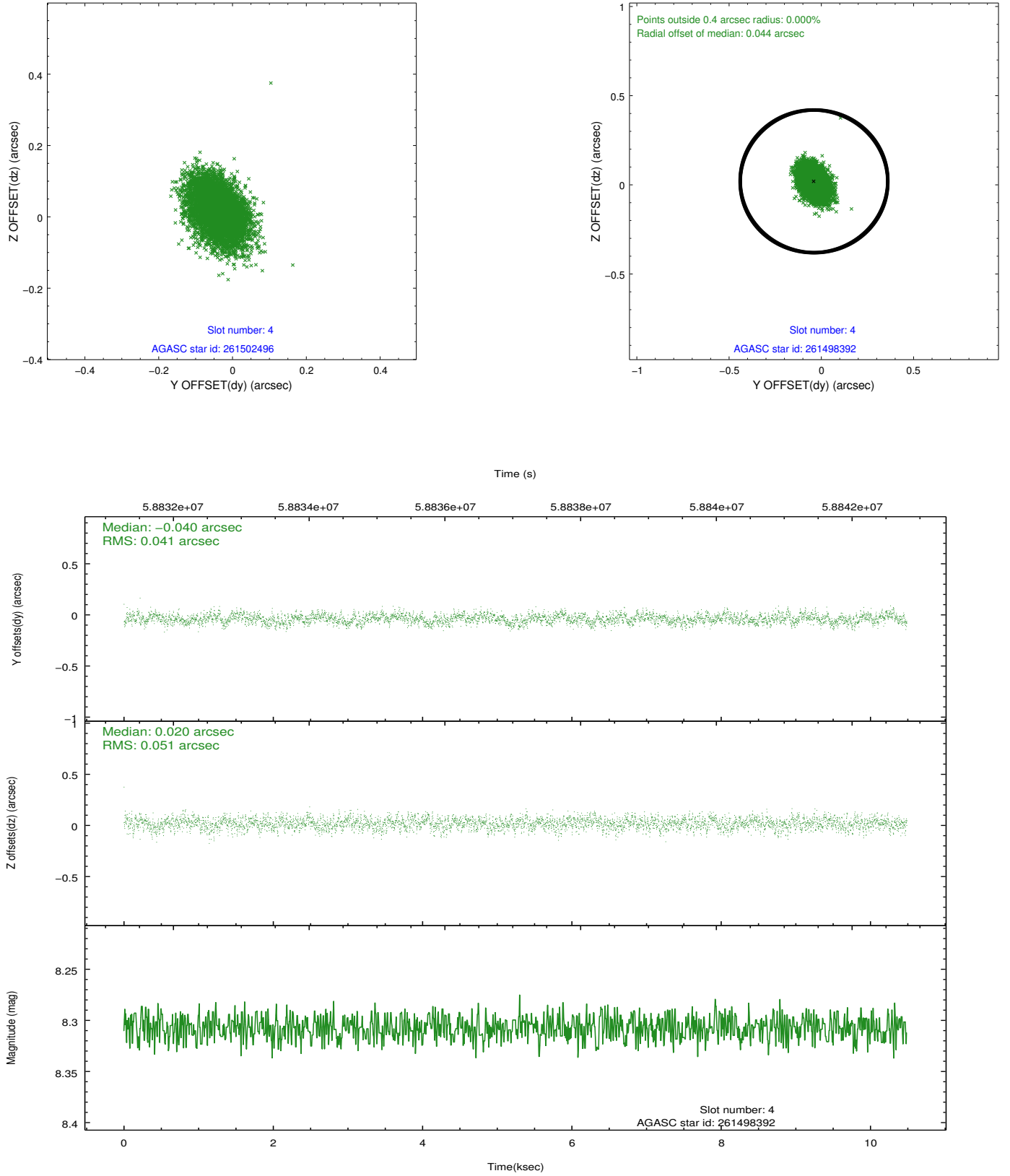
slot	status	id	mag	n_pts	med_dy	med_dz	dr1	dr2	ra	dec	mean_y	mean_z
0	OMITTED		0.00	0	0.000	0.000	0.000	0.000	0.000000	0.000000	0.00	0.00
1	FID	HRC-I-3	7.04	5117	0.033	-0.027	0.004	0.007	0.000000	0.000000	-1185.15	1254.26
2	FID	HRC-I-4	6.94	5117	0.043	-0.031	0.004	0.007	0.000000	0.000000	1285.91	1252.46
3	GUIDE	261502496	7.34	5117	-0.034	-0.042	0.065	0.106	194.887297	28.065668	135.27	459.77
4	GUIDE	261498392	8.31	5117	-0.040	0.020	0.068	0.114	194.888587	28.238913	527.06	945.22
5	GUIDE	261492080	9.29	5115	-0.088	-0.001	0.094	0.148	194.976344	28.631585	1624.82	1878.37
6	GUIDE	261505232	9.79	5115	0.164	0.020	0.133	0.211	194.216553	27.802521	-2121.51	1054.60
7	UNUSED		0.00	0	0.000	0.000	0.000	0.000	0.000000	0.000000	0.00	0.00

2.4 Star Slots

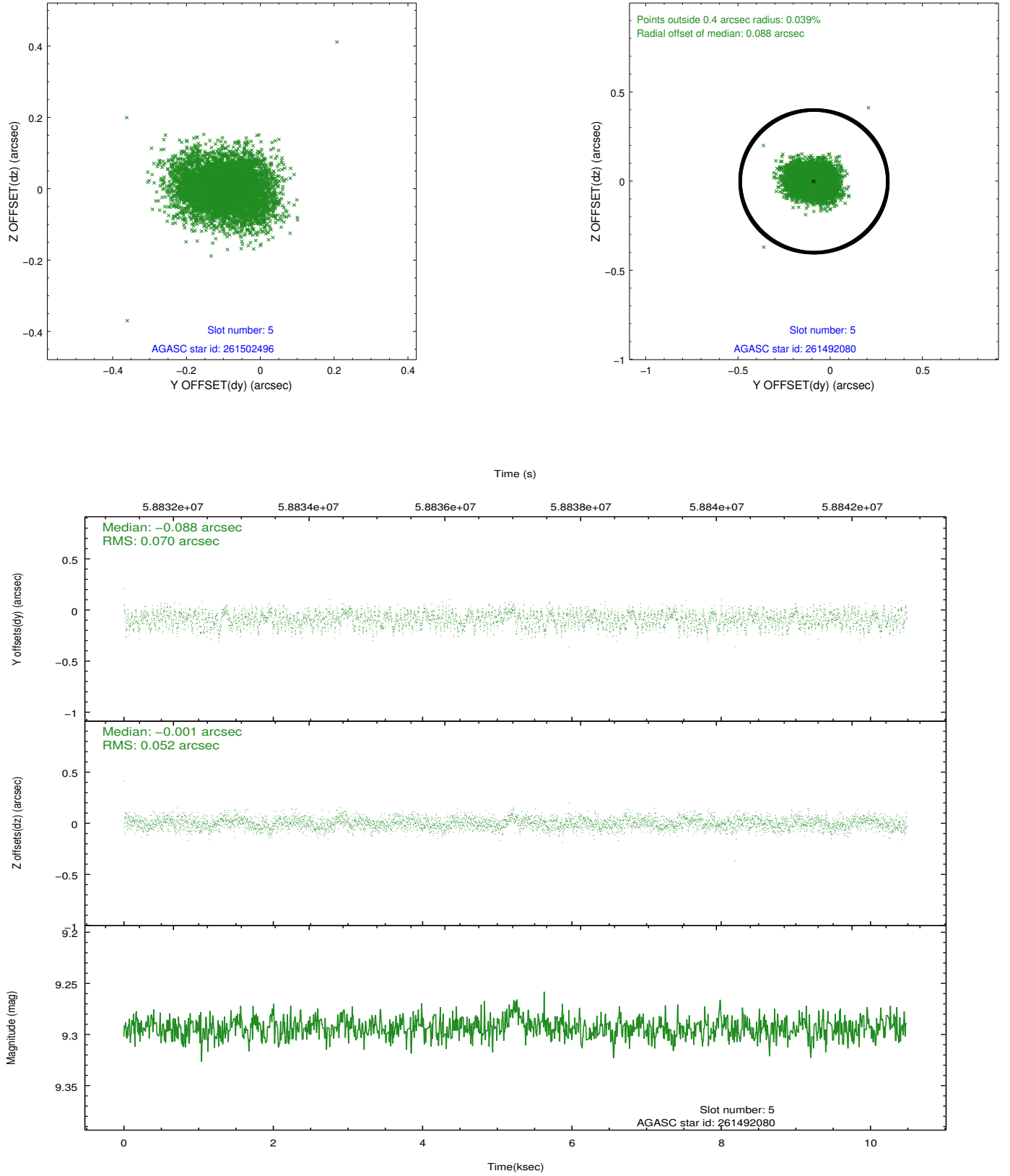
2.4.1 Slot 3



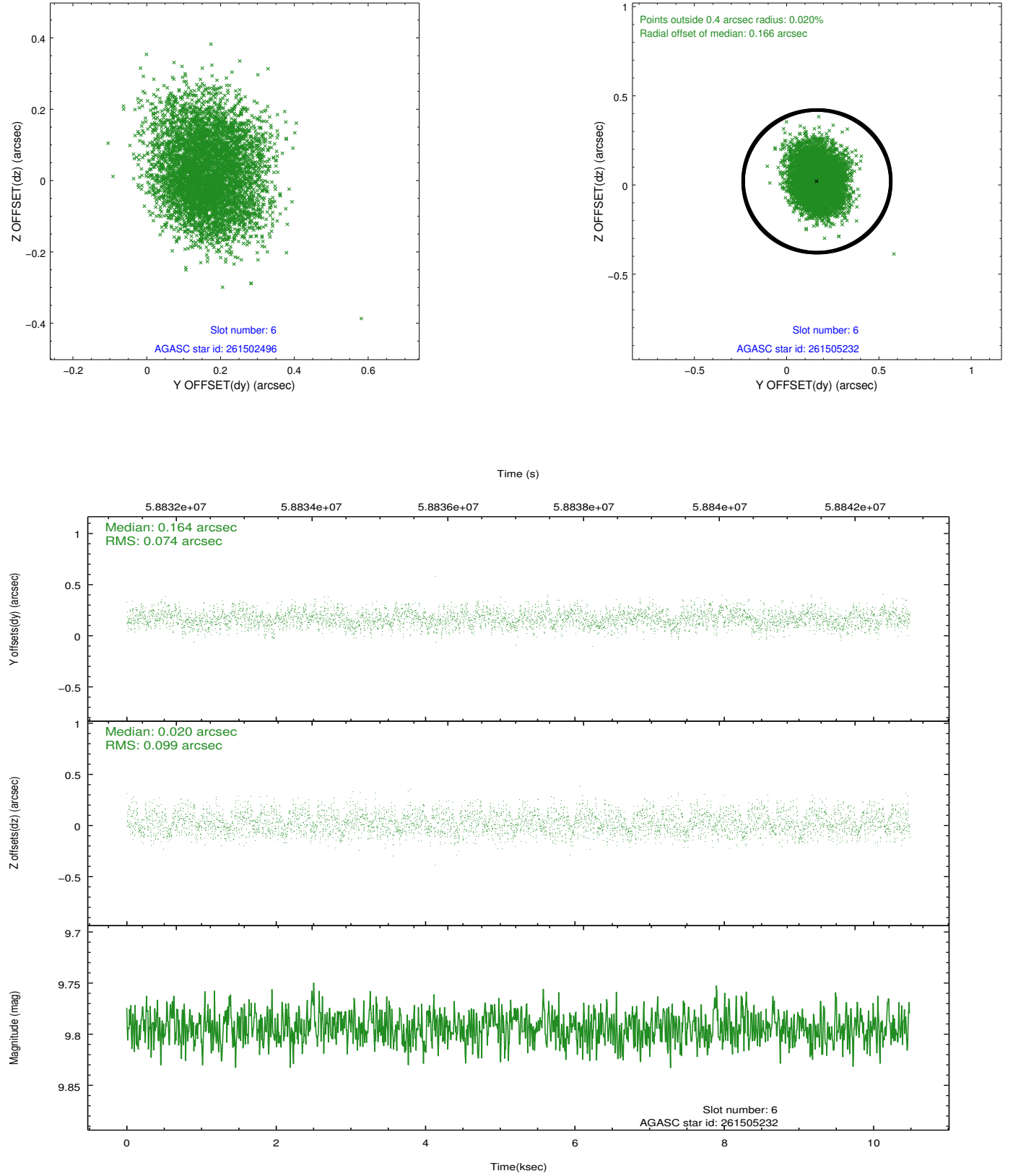
2.4.2 Slot 4



2.4.3 Slot 5

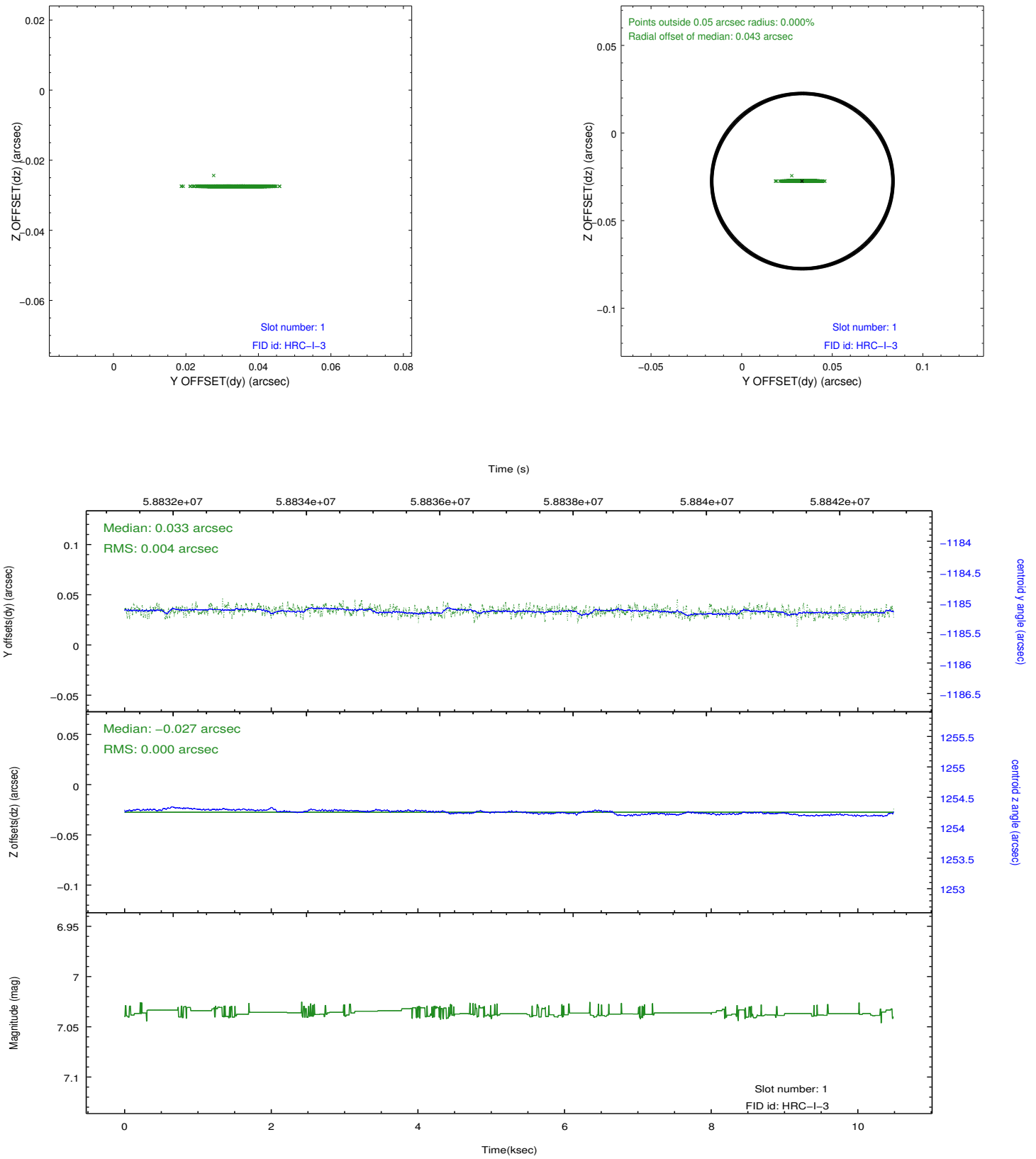


2.4.4 Slot 6

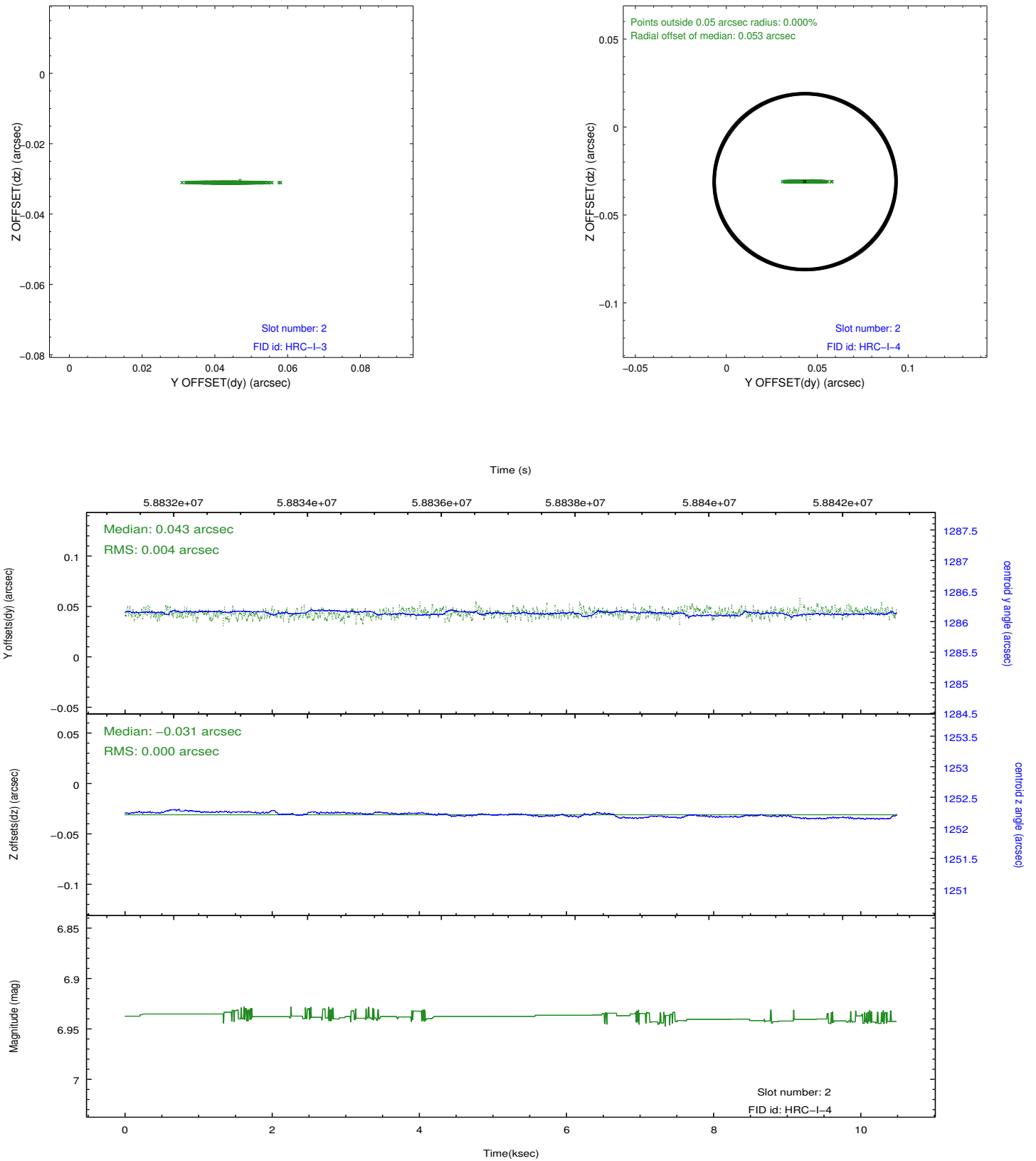


2.5 FID Slots

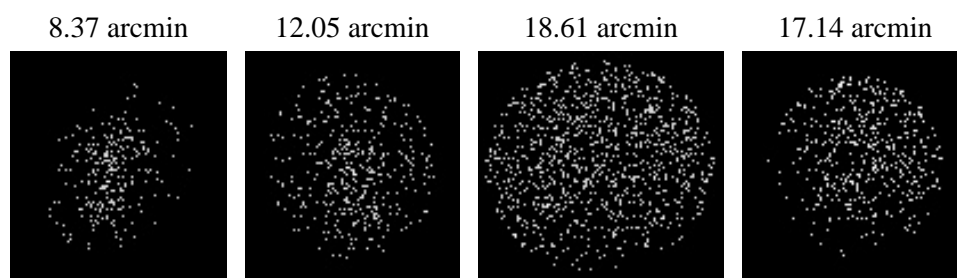
2.5.1 Slot 1



2.5.2 Slot 2



3 Point Sources



A Summary

A.1 Status

V&V Scientist	Joy Nichols
V&V Date (YYYY-MM-DD)	2010.01.05
V&V Edition	1
V&V Disposition and Status	OK
V&V Charge Time	10.272

A.2 Comments

The fid light in slot 0 was removed from the aspect solution due to poor data quality. The aspect solution is not expected to be degraded by removing one fid light or guide star from the solution.

==

Also, the guide star in slot 7 was removed from the aspect solution due to poor data quality. The aspect solution is not expected to be degraded by removing one guide star from the solution.