

V&V Reference Report

L2 ASCDS Version : 8.4.3

Observation 55298 - L2 Version 2
Chandra X-Ray Center

L2 Processing Date : Feb 18 2012

Contents

1	Front	2
2	OBI	3
2.1	OBI	3
2.1.1	Images	3
2.1.2	Bias	3
2.1.3	Parameters	4
2.1.4	Events	4
2.2	Compared Parameters	5
2.3	Star Slots	6
2.4	FID Slots	6
A	Summary	7
A.1	Status	7
A.2	Comments	7

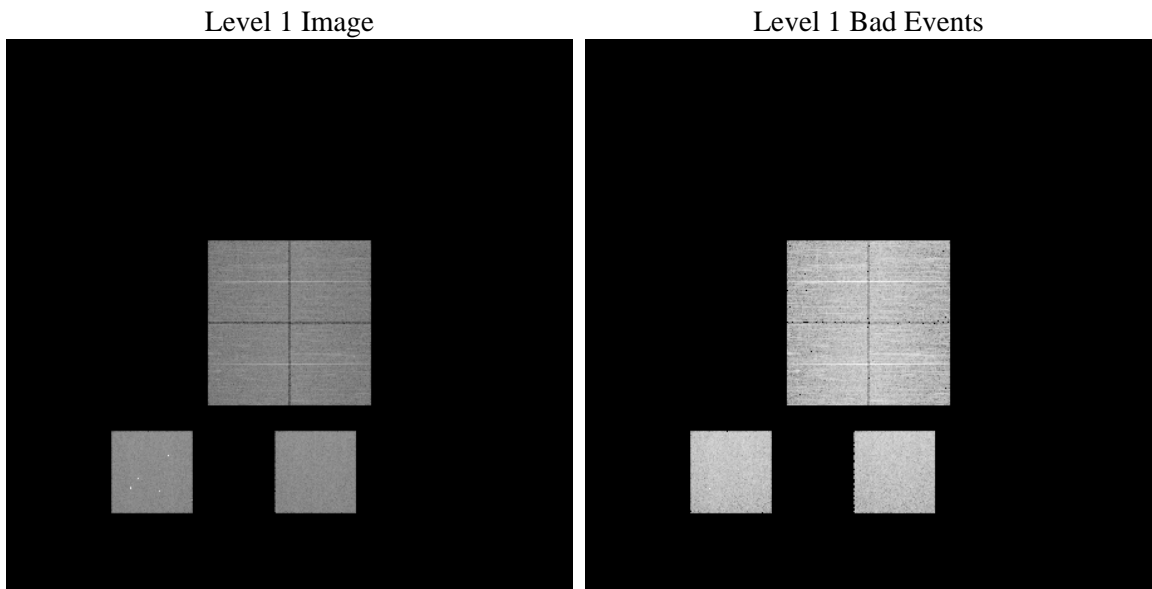
1 Front

seq_num	 	Sequence number
obs_id	55298	Observation id
title	ACIS-012357 diagnostics	Proposal title
observer	CHANDRA engineering request/realtime commanding	Principal investig
object	 	Source name
dtcycle	0	
cycle	P	events from which exps? Prim/Second/Both
ra_targ	0.0	Observer's specified target RA [deg]
dec_targ	0.0	Observer's specified target Dec [deg]
ra_nom	169.00191138803	Nominal RA [deg]
dec_nom	-24.029148090617	Nominal Dec [deg]
roll_nom	234.58558435442	Nominal Roll [deg]
revision	2	Processing version of data
ontime	8286.9571316242	Sum of GTIs [s]
livetime	8182.0226906171	Livetime [s]
ontime0	8286.9160916209	Sum of GTIs [s]
ontime1	8286.8750516176	Sum of GTIs [s]
ontime2	8286.8340116143	Sum of GTIs [s]
ontime3	8286.9981716275	Sum of GTIs [s]
ontime5	8286.792971611	Sum of GTIs [s]
ontime7	8286.9571316242	Sum of GTIs [s]
l2events	330377	Number of level 2 events

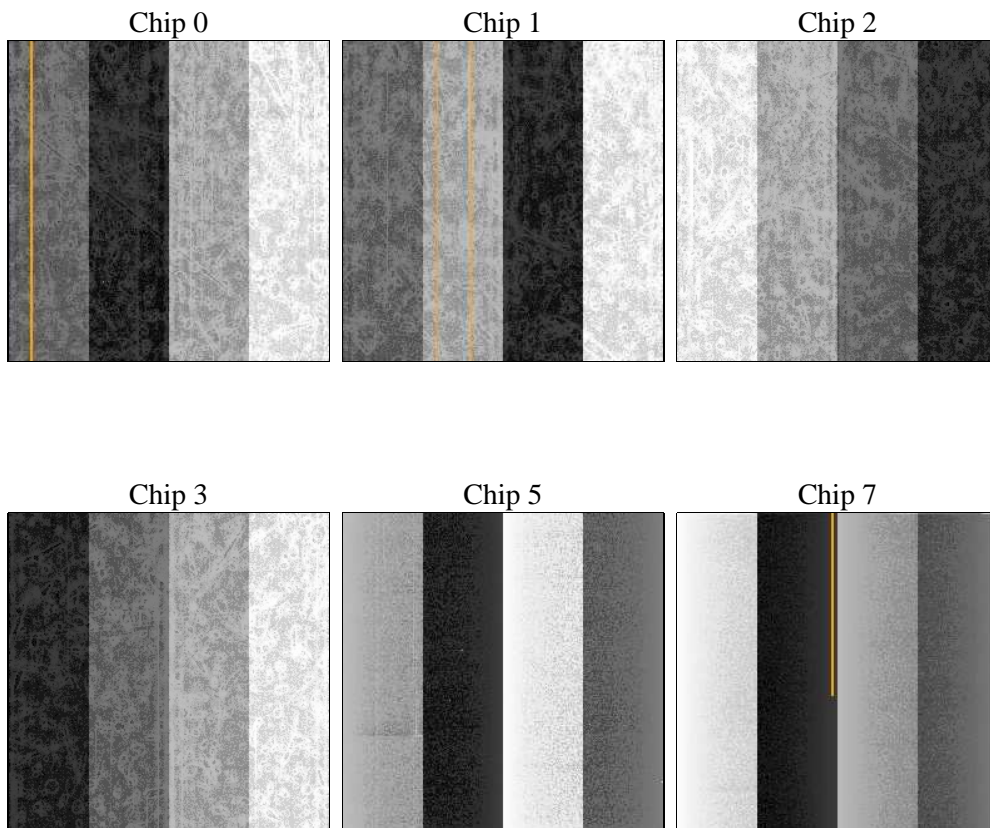
2 OBI

2.1 OBI

2.1.1 Images



2.1.2 Bias



2.1.3 Parameters

obi_num	1	Obi number	sched_exp_time	0.0	[s] Scheduled observation exposure time
ascdsver	8.4.3	Processing system revision	ontime	8286.9571316242	Sum of GTIs [s]
caldsver	4.4.8	 	ontime0	8286.9160916209	Sum of GTIs [s]
date	2012-02-18T04:56:05	Date and time of file creation	ontime1	8286.8750516176	Sum of GTIs [s]
revision	2	Processing version of data	ontime2	8286.8340116143	Sum of GTIs [s]
			ontime3	8286.9981716275	Sum of GTIs [s]
			ontime5	8286.792971611	Sum of GTIs [s]
			ontime7	8286.9571316242	Sum of GTIs [s]
			l1events	676699	Number of level 1 events

2.1.4 Events

	ccd 0	ccd 1	ccd 2	ccd 3	ccd 5	ccd 7		ccd 0	ccd 1	ccd 2	ccd 3	ccd 5	ccd 7
level 1 events	96767	100126	101221	104127	140327	134131	grade 0 events	25435	24752	25964	26453	13692	12936
rejected events	48733	51759	53226	55516	57665	57506		26%	24%	25%	25%	9%	9%
rejected %	50%	51%	52%	53%	41%	42%	grade 1 events	143	136	174	159	280	118
								0%	0%	0%	0%	0%	0%
							grade 2 events	8840	9414	8311	8406	29041	16876
								9%	9%	8%	8%	20%	12%
							grade 3 events	3269	3223	3239	3381	2999	6867
								3%	3%	3%	3%	2%	5%
							grade 4 events	3159	3163	3301	3259	2974	6800
								3%	3%	3%	3%	2%	5%
							grade 5 events	3234	3308	3013	3592	7048	8932
								3%	3%	2%	3%	5%	6%
							grade 6 events	7331	7815	7180	7112	33956	33146
								7%	7%	7%	6%	24%	24%
							grade 7 events	45356	48315	50039	51765	50337	48456
								46%	48%	49%	49%	35%	36%

2.2 Compared Parameters

Parameter	Planned	Actual	Parameter	Planned	Actual
Instrument	ACIS	ACIS	Obspar format version number	7	7
Detector	ACIS-012357	ACIS-012357	Obspar file type	PREDICTED	ACTUAL
Grating	NONE	NONE	Obspar update status	NONE	UPDATED
Data mode	FAINT	FAINT	Number of optional ACIS chips dropped	0	0
Observation mode	SECONDARY	SECONDARY	On-chip summing requested	N	N
[deg] Pointing RA	0	169.0019113880266	Subarray requested	NONE	NONE
[deg] Pointing Dec	0	-24.02914809061665	Alternating exposures requested	N	N
[deg] Pointing Roll	0.0	234.5855843544163	[s] Primary exposure time	3.2	3.2
[mm] SIM focus pos	-1.429586	-1.428180813131781			
[mm] SIM defocus	0.1037507710433287	0.1051558262725154			
[mm] SIM translation stage pos	250.455976	250.466033080201			
[mm] SIM translation stage offset	0	-0.01005468664627074			
[s] Observation start time (MET)	427002552.957985	427002551.93299			
Observation start date	2011-07-14T03:49:13	2011-07-14T03:49:11			
[s] Observation end time (MET)	427032655.159559	427032654.13456			
Observation end date	2011-07-14T12:10:55	2011-07-14T12:10:54			
Read mode	TIMED	TIMED			

2.3 Star Slots

2.4 FID Slots

A Summary

A.1 Status

V&V Scientist	Beth Sundheim
V&V Date (YYYY-MM-DD)	2012.02.21
V&V Edition	1
V&V Disposition and Status	OK
V&V Charge Time	8.2869571316242

A.2 Comments