

# V&V Reference Report

## L2 ASCDS Version : 8.4.3

Observation 55258 - L2 Version 2  
Chandra X-Ray Center

L2 Processing Date : Feb 19 2012

## Contents

<b>1</b>	<b>Front</b>	<b>2</b>
<b>2</b>	<b>OBI</b>	<b>3</b>
2.1	OBI . . . . .	3
2.1.1	Images . . . . .	3
2.1.2	Bias . . . . .	3
2.1.3	Parameters . . . . .	4
2.1.4	Events . . . . .	4
2.2	Compared Parameters . . . . .	5
2.3	Star Slots . . . . .	6
2.4	FID Slots . . . . .	6
<b>A</b>	<b>Summary</b>	<b>7</b>
A.1	Status . . . . .	7
A.2	Comments . . . . .	7

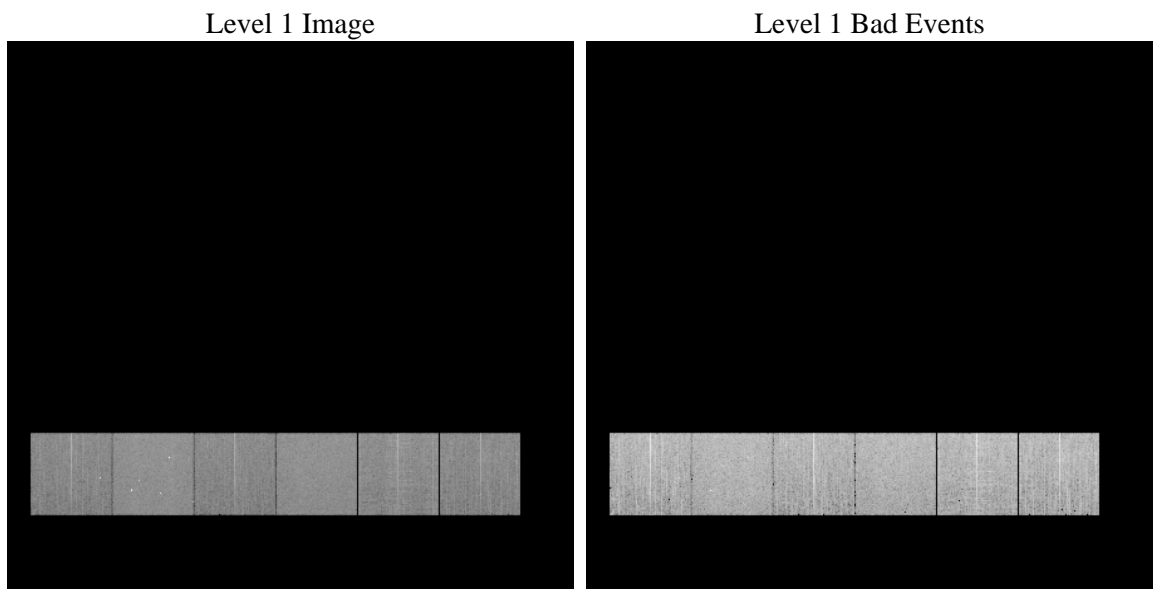
# 1 Front

seq_num	&#160	Sequence number
obs_id	55258	Observation id
title	ACIS-456789 diagnostics	Proposal title
observer	CHANDRA engineering request/realtime commanding	Principal investig
object	&#160	Source name
dtcycle	0	&#160
cycle	P	events from which exps? Prim/Second/Both
ra_targ	0.0	Observer's specified target RA [deg]
dec_targ	0.0	Observer's specified target Dec [deg]
ra_nom	320.03762581359	Nominal RA [deg]
dec_nom	-6.1730413418064	Nominal Dec [deg]
roll_nom	190.8307383569	Nominal Roll [deg]
revision	2	Processing version of data
ontime	8018.0755722523	Sum of GTIs [s]
livetime	7916.5458714509	Livetime [s]
ontime4	8017.9524522424	Sum of GTIs [s]
ontime5	8018.034532249	Sum of GTIs [s]
ontime6	8017.9934922457	Sum of GTIs [s]
ontime7	8018.0755722523	Sum of GTIs [s]
ontime8	8017.9114122391	Sum of GTIs [s]
ontime9	8011.6345412731	Sum of GTIs [s]
l2events	322633	Number of level 2 events

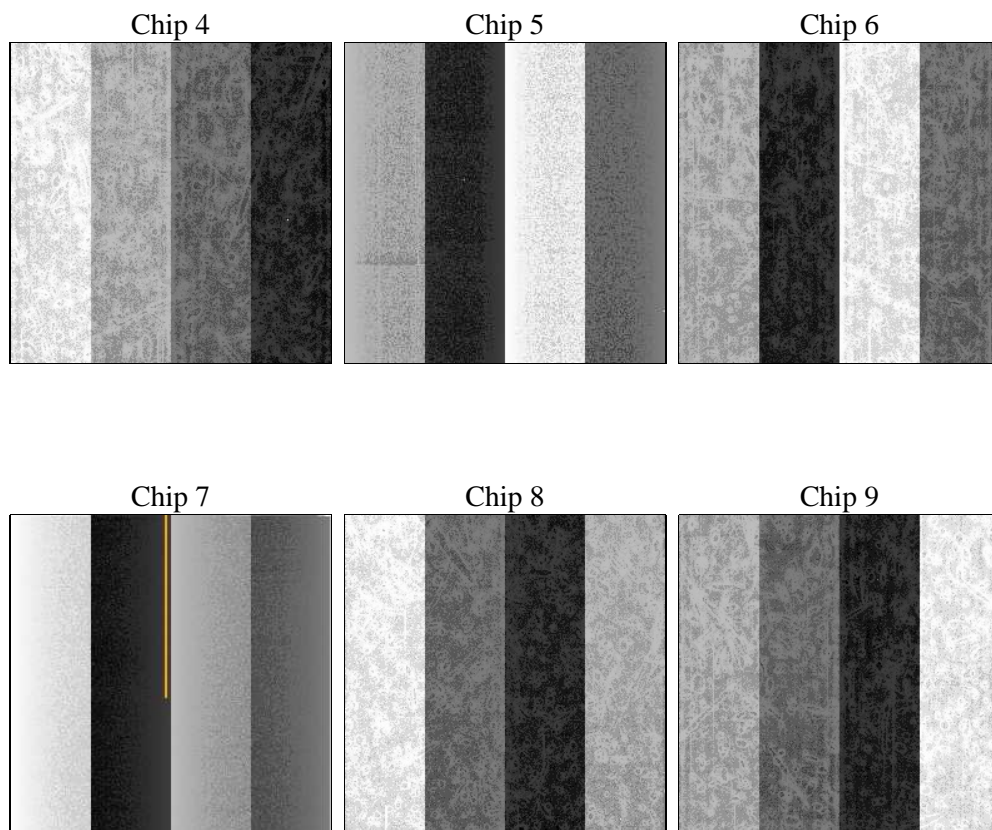
## 2 OBI

### 2.1 OBI

#### 2.1.1 Images



#### 2.1.2 Bias



### 2.1.3 Parameters

obi_num	0	Obi number	sched_exp_time	0.0	[s] Scheduled observation exposure time
ascdsver	8.4.3	Processing system revision	ontime	8018.0755722523	Sum of GTIs [s]
caldsver	4.4.8	&#160	ontime4	8017.9524522424	Sum of GTIs [s]
date	2012-02-19T09:52:44	Date and time of file creation	ontime5	8018.034532249	Sum of GTIs [s]
revision	2	Processing version of data	ontime6	8017.9934922457	Sum of GTIs [s]
			ontime7	8018.0755722523	Sum of GTIs [s]
			ontime8	8017.9114122391	Sum of GTIs [s]
			ontime9	8011.6345412731	Sum of GTIs [s]
			l1events	732722	Number of level 1 events

### 2.1.4 Events

	ccd 4	ccd 5	ccd 6	ccd 7	ccd 8	ccd 9		ccd 4	ccd 5	ccd 6	ccd 7	ccd 8	ccd 9
level 1 events	109233	142569	106834	134946	126851	112289	grade 0 events	27869	13244	25616	13260	29204	25628
rejected events	61927	62247	58743	60390	67481	65288		25%	9%	23%	9%	23%	22%
rejected %	56%	43%	54%	44%	53%	58%	grade 1 events	232	250	125	110	160	187
								0%	0%	0%	0%	0%	0%
							grade 2 events	7804	28213	9143	16668	11826	8729
								7%	19%	8%	12%	9%	7%
							grade 3 events	3396	3441	3190	7004	4686	3207
								3%	2%	2%	5%	3%	2%
							grade 4 events	3449	3426	3266	7005	4447	3429
								3%	2%	3%	5%	3%	3%
							grade 5 events	3460	7548	3746	9208	4901	4235
								3%	5%	3%	6%	3%	3%
							grade 6 events	6310	34692	8455	33092	11225	7611
								5%	24%	7%	24%	8%	6%
							grade 7 events	56713	51755	53293	48599	60402	59263
								51%	36%	49%	36%	47%	52%

## 2.2 Compared Parameters

Parameter	Planned	Actual	Parameter	Planned	Actual
Instrument	ACIS	ACIS	Obspar format version number	7	7
Detector	ACIS-456789	ACIS-456789	Obspar file type	PREDICTED	ACTUAL
Grating	NONE	NONE	Obspar update status	OVERRIDE	OVERRIDE
Data mode	FAINT	FAINT	Number of optional ACIS chips dropped	0	0
Observation mode	SECONDARY	SECONDARY	On-chip summing requested	N	N
[deg] Pointing RA	0	320.0376258135888	Subarray requested	NONE	NONE
[deg] Pointing Dec	0	-6.173041341806378	Alternating exposures requested	N	N
[deg] Pointing Roll	0.0	190.8307383568952	[s] Primary exposure time	3.2	3.2
[mm] SIM focus pos	-1.4281808131	-1.4281808131			
[mm] SIM defocus	0.1051557500557434	0.1051557500557434			
[mm] SIM translation stage pos	250.4635187649	250.4635187649			
[mm] SIM translation stage offset	-0.007542945905271381	-0.007542945905271381			
[s] Observation start time (MET)	428602223.391733	428602223.391733			
Observation start date	2011-08-01T16:10:23	2011-08-01T16:10:23			
[s] Observation end time (MET)	428611771.027953	428611771.027953			
Observation end date	2011-08-01T18:49:31	2011-08-01T18:49:31			
Read mode	TIMED	TIMED			

## 2.3 Star Slots

## 2.4 FID Slots

## A Summary

### A.1 Status

V&V Scientist	Beth Sundheim
V&V Date (YYYY-MM-DD)	2012.02.21
V&V Edition	1
V&V Disposition and Status	OK
V&V Charge Time	8.0180755722523

### A.2 Comments