

V&V Reference Report

L2 ASCDS Version : 8.4.3

Observation 55198 - L2 Version 2
Chandra X-Ray Center

L2 Processing Date : Feb 22 2012

Contents

1	Front	2
2	OBI	3
2.1	OBI	3
2.1.1	Images	3
2.1.2	Bias	3
2.1.3	Parameters	4
2.1.4	Events	4
2.2	Compared Parameters	5
2.3	Star Slots	6
2.4	FID Slots	6
A	Summary	7
A.1	Status	7
A.2	Comments	7

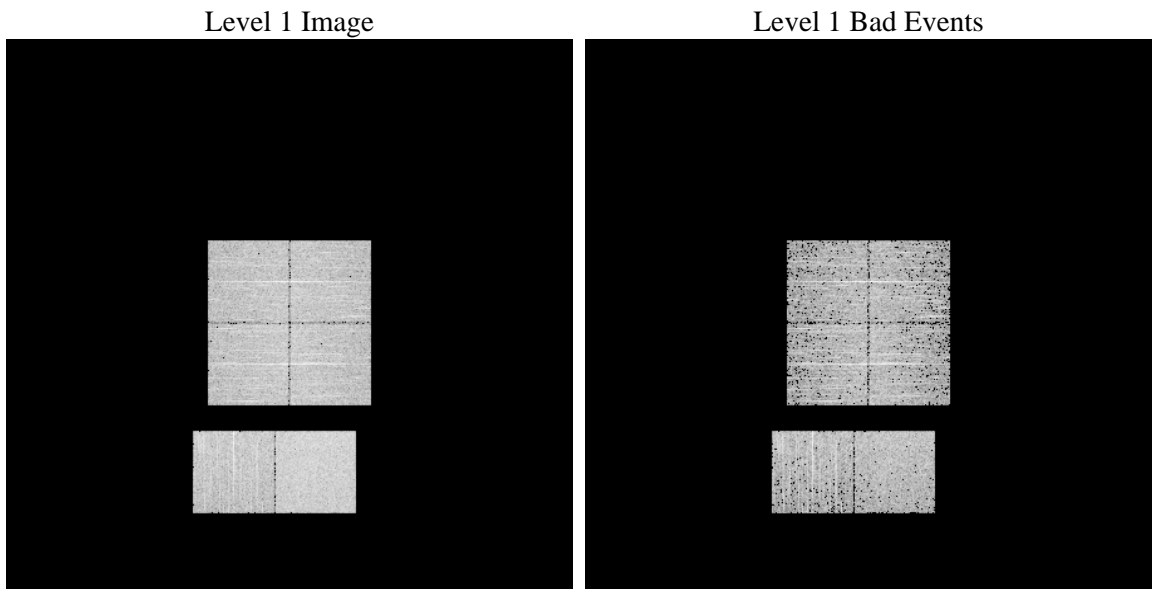
1 Front

seq_num	 	Sequence number
obs_id	55198	Observation id
title	ACIS-012367 diagnostics	Proposal title
observer	CHANDRA engineering request/realtime commanding	Principal investig
object	 	Source name
dtcycle	0	
cycle	P	events from which exps? Prim/Second/Both
ra_targ	0.0	Observer's specified target RA [deg]
dec_targ	0.0	Observer's specified target Dec [deg]
ra_nom	211.05382005444	Nominal RA [deg]
dec_nom	-30.02812132028	Nominal Dec [deg]
roll_nom	237.8937071731	Nominal Roll [deg]
revision	2	Processing version of data
ontime	3286.3999878168	Sum of GTIs [s]
livetime	3244.7856123386	Livetime [s]
ontime0	3286.3999878168	Sum of GTIs [s]
ontime1	3283.1589576006	Sum of GTIs [s]
ontime2	3286.3999878168	Sum of GTIs [s]
ontime3	3286.3999878168	Sum of GTIs [s]
ontime6	3286.3999878168	Sum of GTIs [s]
ontime7	3286.3999878168	Sum of GTIs [s]
l2events	118667	Number of level 2 events

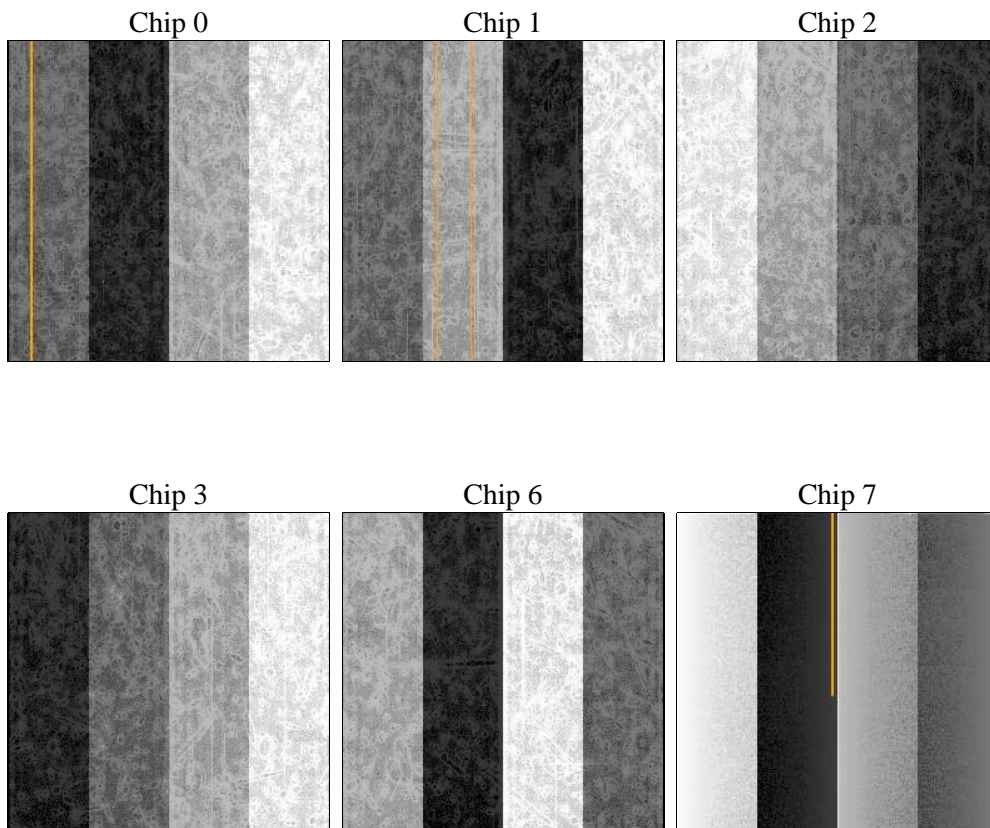
2 OBI

2.1 OBI

2.1.1 Images



2.1.2 Bias



2.1.3 Parameters

obi_num	0	Obi number	sched_exp_time	0.0	[s] Scheduled observation exposure time
ascdsver	8.4.3	Processing system revision	ontime	3286.3999878168	Sum of GTIs [s]
caldbver	4.4.8	 	ontime0	3286.3999878168	Sum of GTIs [s]
date	2012-02-22T09:07:32	Date and time of file creation	ontime1	3283.1589576006	Sum of GTIs [s]
revision	2	Processing version of data	ontime2	3286.3999878168	Sum of GTIs [s]
			ontime3	3286.3999878168	Sum of GTIs [s]
			ontime6	3286.3999878168	Sum of GTIs [s]
			ontime7	3286.3999878168	Sum of GTIs [s]
			l1events	261038	Number of level 1 events

2.1.4 Events

	ccd 0	ccd 1	ccd 2	ccd 3	ccd 6	ccd 7		ccd 0	ccd 1	ccd 2	ccd 3	ccd 6	ccd 7
level 1 events	38927	40344	41955	41371	43325	55116	grade 0 events	9854	9590	9933	10015	9843	5191
rejected events	20156	21421	23258	22611	23945	23973		25%	23%	23%	24%	22%	9%
rejected %	51%	53%	55%	54%	55%	43%	grade 1 events	65	60	65	73	58	42
								0%	0%	0%	0%	0%	0%
							grade 2 events	3521	3682	3336	3321	3580	6702
								9%	9%	7%	8%	8%	12%
							grade 3 events	1322	1314	1348	1340	1323	2880
								3%	3%	3%	3%	3%	5%
							grade 4 events	1271	1319	1282	1315	1321	2724
								3%	3%	3%	3%	3%	4%
							grade 5 events	1325	1408	1318	1578	1484	3683
								3%	3%	3%	3%	3%	6%
							grade 6 events	2825	3038	2819	2790	3339	13683
								7%	7%	6%	6%	7%	24%
							grade 7 events	18744	19933	21854	20939	22377	20211
								48%	49%	52%	50%	51%	36%

2.2 Compared Parameters

Parameter	Planned	Actual	Parameter	Planned	Actual
Instrument	ACIS	ACIS	Obspar format version number	7	7
Detector	ACIS-012367	ACIS-012367	Obspar file type	PREDICTED	ACTUAL
Grating	NONE	NONE	Obspar update status	NONE	UPDATED
Data mode	FAINT	FAINT	Number of optional ACIS chips dropped	0	0
Observation mode	SECONDARY	SECONDARY	On-chip summing requested	N	N
[deg] Pointing RA	0	211.0538200544435	Subarray requested	NONE	NONE
[deg] Pointing Dec	0	-30.02812132028004	Alternating exposures requested	N	N
[deg] Pointing Roll	0.0	237.8937071730996	[s] Primary exposure time	3.2	3.2
[mm] SIM focus pos	-1.429586	-1.428180813131781			
[mm] SIM defocus	0.1037507710433287	0.1051558262725154			
[mm] SIM translation stage pos	250.455976	250.466033080201			
[mm] SIM translation stage offset	0	-0.01005468664627074			
[s] Observation start time (MET)	431834893.161154	431834892.13615			
Observation start date	2011-09-08T02:08:13	2011-09-08T02:08:12			
[s] Observation end time (MET)	431840335.91144	431840334.88644			
Observation end date	2011-09-08T03:38:56	2011-09-08T03:38:54			
Read mode	TIMED	TIMED			

2.3 Star Slots

2.4 FID Slots

A Summary

A.1 Status

V&V Scientist	Jen Lauer
V&V Date (YYYY-MM-DD)	2012.02.22
V&V Edition	1
V&V Disposition and Status	OK
V&V Charge Time	3.2863999878168

A.2 Comments