

V&V Reference Report

L2 ASCDS Version : 8.4.3.1

Observation 54958 - L2 Version 2
Chandra X-Ray Center

L2 Processing Date : Feb 29 2012

Contents

1	Front	2
2	OBI	3
2.1	OBI	3
2.1.1	Images	3
2.1.2	Bias	3
2.1.3	Parameters	4
2.1.4	Events	4
2.2	Compared Parameters	5
2.3	Star Slots	6
2.4	FID Slots	6
A	Summary	7
A.1	Status	7
A.2	Comments	7

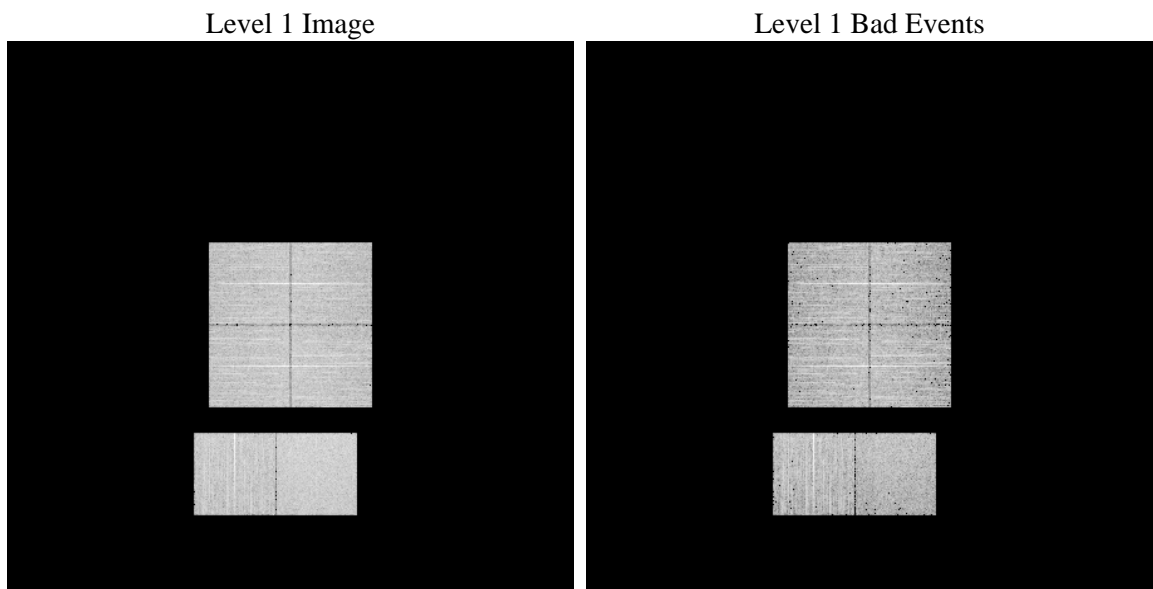
1 Front

seq_num	 	Sequence number
obs_id	54958	Observation id
title	ACIS-012367 diagnostics	Proposal title
observer	CHANDRA engineering request/realtime commanding	Principal investig
object	 	Source name
dtcycle	0	
cycle	P	events from which exps? Prim/Second/Both
ra_targ	0.0	Observer's specified target RA [deg]
dec_targ	0.0	Observer's specified target Dec [deg]
ra_nom	73.999774659642	Nominal RA [deg]
dec_nom	38.971256201633	Nominal Dec [deg]
roll_nom	236.96943996246	Nominal Roll [deg]
revision	2	Processing version of data
ontime	4753.7395096421	Sum of GTIs [s]
livetime	4693.5447976128	Livetime [s]
ontime0	4753.6984696388	Sum of GTIs [s]
ontime1	4753.6574296355	Sum of GTIs [s]
ontime2	4753.6163896322	Sum of GTIs [s]
ontime3	4753.7805496454	Sum of GTIs [s]
ontime6	4753.5753496289	Sum of GTIs [s]
ontime7	4753.7395096421	Sum of GTIs [s]
l2events	149984	Number of level 2 events

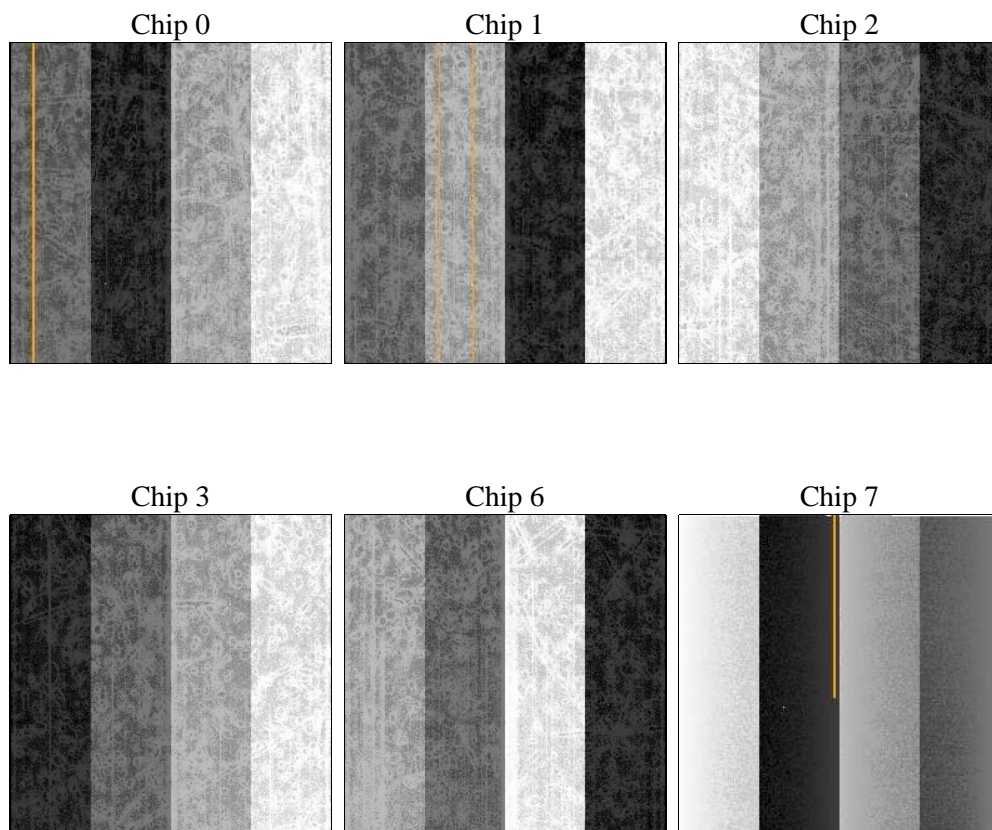
2 OBI

2.1 OBI

2.1.1 Images



2.1.2 Bias



2.1.3 Parameters

obi_num	0	Obi number	sched_exp_time	0.0	[s] Scheduled observation exposure time
ascdsver	8.4.3.1	Processing system revision	ontime	4753.7395096421	Sum of GTIs [s]
caldsver	4.4.8	 	ontime0	4753.6984696388	Sum of GTIs [s]
date	2012-02-29T15:11:41	Date and time of file creation	ontime1	4753.6574296355	Sum of GTIs [s]
revision	2	Processing version of data	ontime2	4753.6163896322	Sum of GTIs [s]
			ontime3	4753.7805496454	Sum of GTIs [s]
			ontime6	4753.5753496289	Sum of GTIs [s]
			ontime7	4753.7395096421	Sum of GTIs [s]
			l1events	389016	Number of level 1 events

2.1.4 Events

	ccd 0	ccd 1	ccd 2	ccd 3	ccd 6	ccd 7
level 1 events	60265	57922	63702	63196	67301	76630
rejected events	36867	34606	40474	39699	43095	35460
rejected %	61%	59%	63%	62%	64%	46%

	ccd 0	ccd 1	ccd 2	ccd 3	ccd 6	ccd 7
grade 0 events	7105	5642	7608	7338	4873	5893
	11%	9%	11%	11%	7%	7%
grade 1 events	41	37	56	50	56	48
	0%	0%	0%	0%	0%	0%
grade 2 events	9750	11061	9431	9873	12368	7983
	16%	19%	14%	15%	18%	10%
grade 3 events	894	795	870	854	654	4044
	1%	1%	1%	1%	0%	5%
grade 4 events	906	759	963	862	685	3369
	1%	1%	1%	1%	1%	4%
grade 5 events	1389	1317	1300	1540	1411	4432
	2%	2%	2%	2%	2%	5%
grade 6 events	4743	5059	4356	4570	5626	19881
	7%	8%	6%	7%	8%	25%
grade 7 events	35437	33252	39118	38109	41628	30980
	58%	57%	61%	60%	61%	40%

2.2 Compared Parameters

Parameter	Planned	Actual	Parameter	Planned	Actual
Instrument	ACIS	ACIS	Obspar format version number	7	7
Detector	ACIS-012367	ACIS-012367	Obspar file type	PREDICTED	ACTUAL
Grating	NONE	NONE	Obspar update status	NONE	UPDATED
Data mode	FAINT	FAINT	Number of optional ACIS chips dropped	0	0
Observation mode	SECONDARY	SECONDARY	On-chip summing requested	N	N
[deg] Pointing RA	0	73.99977465964173	Subarray requested	NONE	NONE
[deg] Pointing Dec	0	38.97125620163304	Alternating exposures requested	N	N
[deg] Pointing Roll	0.0	236.969439962464	[s] Primary exposure time	3.2	3.2
[mm] SIM focus pos	-1.429586	-1.428180813131781			
[mm] SIM defocus	0.1037507710433287	0.1051558262725154			
[mm] SIM translation stage pos	250.455976	250.466033080201			
[mm] SIM translation stage offset	0	-0.01005468664627074			
[s] Observation start time (MET)	441428618.753156	441428617.72815			
Observation start date	2011-12-28T03:03:39	2011-12-28T03:03:37			
[s] Observation end time (MET)	441435281.253509	441435280.2285			
Observation end date	2011-12-28T04:54:41	2011-12-28T04:54:40			
Read mode	TIMED	TIMED			

2.3 Star Slots

2.4 FID Slots

A Summary

A.1 Status

V&V Scientist	Beth Sundheim
V&V Date (YYYY-MM-DD)	2012.02.29
V&V Edition	1
V&V Disposition and Status	OK
V&V Charge Time	4.7537395096421

A.2 Comments