

V&V Reference Report

L2 ASCDS Version : 8.4.3

Observation 54708 - L2 Version 1
Chandra X-Ray Center

L2 Processing Date : Apr 14 2012

Contents

1	Front	2
2	OBI	3
2.1	OBI	3
2.1.1	Images	3
2.1.2	Bias	3
2.1.3	Parameters	4
2.1.4	Events	4
2.2	Compared Parameters	5
2.3	Star Slots	6
2.4	FID Slots	6
A	Summary	7
A.1	Status	7
A.2	Comments	7

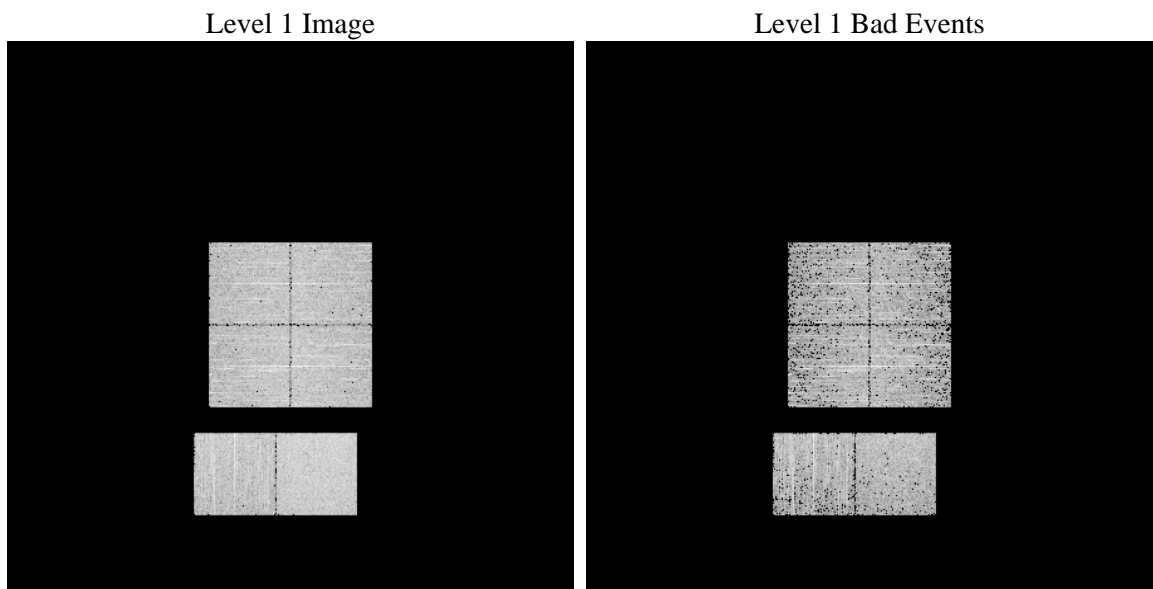
1 Front

seq_num	 	Sequence number
obs_id	54708	Observation id
title	ACIS-012367 diagnostics	Proposal title
observer	CHANDRA engineering request/realtime commanding	Principal investig
object	 	Source name
dtcycle	0	
cycle	P	events from which exps? Prim/Second/Both
ra_targ	0.0	Observer's specified target RA [deg]
dec_targ	0.0	Observer's specified target Dec [deg]
ra_nom	169.02844830685	Nominal RA [deg]
dec_nom	-30.014803535486	Nominal Dec [deg]
roll_nom	296.08434008312	Nominal Roll [deg]
revision	1	Processing version of data
ontime	3285.4297664165	Sum of GTIs [s]
livetime	3243.8276764659	Livetime [s]
ontime0	3285.3887264132	Sum of GTIs [s]
ontime1	3285.34768641	Sum of GTIs [s]
ontime2	3285.3066464067	Sum of GTIs [s]
ontime3	3285.4708064198	Sum of GTIs [s]
ontime6	3285.2656064034	Sum of GTIs [s]
ontime7	3285.4297664165	Sum of GTIs [s]
l2events	103275	Number of level 2 events

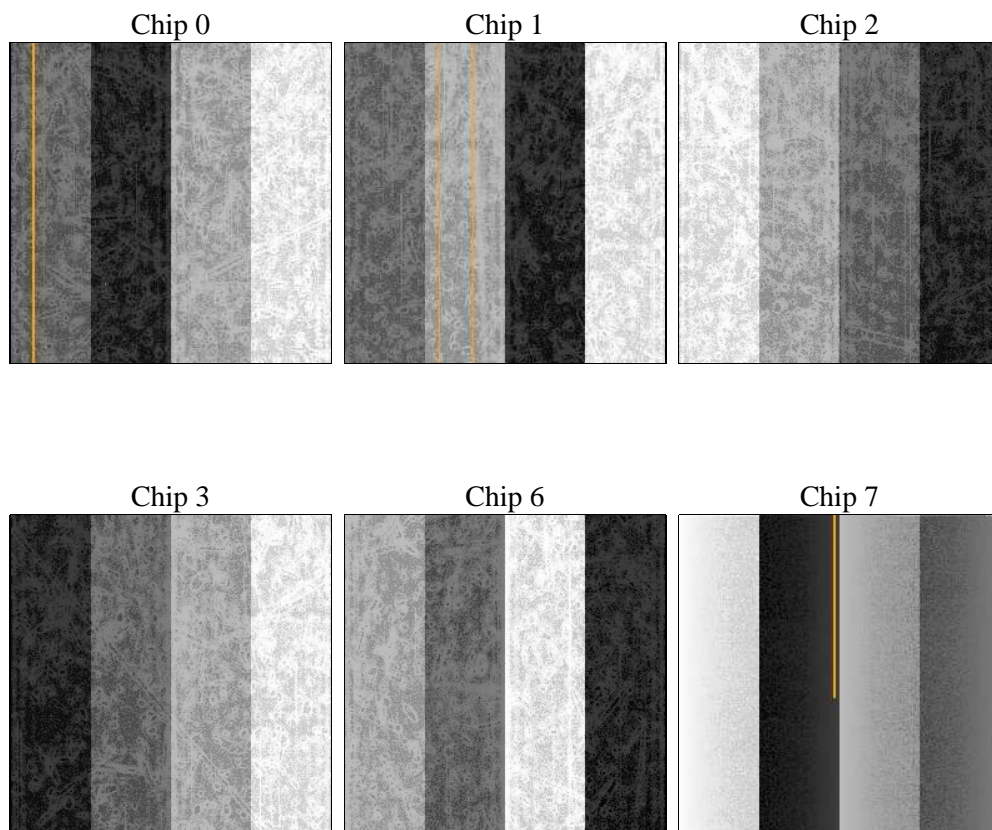
2 OBI

2.1 OBI

2.1.1 Images



2.1.2 Bias



2.1.3 Parameters

obi_num	0	Obi number	sched_exp_time	0.0	[s] Scheduled observation exposure time
ascdsver	8.4.3	Processing system revision	ontime	3285.4297664165	Sum of GTIs [s]
caldsver	4.4.9	 	ontime0	3285.3887264132	Sum of GTIs [s]
date	2012-04-14T19:44:47	Date and time of file creation	ontime1	3285.34768641	Sum of GTIs [s]
revision	1	Processing version of data	ontime2	3285.3066464067	Sum of GTIs [s]
			ontime3	3285.4708064198	Sum of GTIs [s]
			ontime6	3285.2656064034	Sum of GTIs [s]
			ontime7	3285.4297664165	Sum of GTIs [s]
			l1events	235306	Number of level 1 events

2.1.4 Events

	ccd 0	ccd 1	ccd 2	ccd 3	ccd 6	ccd 7		ccd 0	ccd 1	ccd 2	ccd 3	ccd 6	ccd 7
level 1 events	35129	35206	37027	38288	39729	49927	grade 0 events	8543	8131	8675	8847	8456	4301
rejected events	18832	19063	21012	21711	22985	22529		24%	23%	23%	23%	21%	8%
rejected %	53%	54%	56%	56%	57%	45%	grade 1 events	48	51	59	57	41	41
								0%	0%	0%	0%	0%	0%
							grade 2 events	3046	3272	2786	2873	3244	6007
								8%	9%	7%	7%	8%	12%
							grade 3 events	1159	1077	1119	1221	1090	2365
								3%	3%	3%	3%	2%	4%
							grade 4 events	1062	1058	1102	1171	1139	2305
								3%	3%	2%	3%	2%	4%
							grade 5 events	1303	1330	1196	1426	1373	3360
								3%	3%	3%	3%	3%	6%
							grade 6 events	2487	2605	2333	2465	2815	12420
								7%	7%	6%	6%	7%	24%
							grade 7 events	17481	17682	19757	20228	21571	19128
								49%	50%	53%	52%	54%	38%

2.2 Compared Parameters

Parameter	Planned	Actual
Instrument	ACIS	ACIS
Detector	ACIS-012367	ACIS-012367
Grating	NONE	NONE
Data mode	FAINT	FAINT
Observation mode	SECONDARY	SECONDARY
[deg] Pointing RA	0	169.0284483068465
[deg] Pointing Dec	0	-30.01480353548607
[deg] Pointing Roll	0.0	296.0843400831226
[mm] SIM focus pos	-1.429586	-1.428180813131781
[mm] SIM defocus	0.1037507710433287	0.1051558262725154
[mm] SIM translation stage pos	250.455976	250.466033080201
[mm] SIM translation stage offset	0	-0.01005468664627074
[s] Observation start time (MET)	450773515.54793	450773514.52293
Observation start date	2012-04-14T06:51:56	2012-04-14T06:51:54
[s] Observation end time (MET)	450782320.298397	450782319.2734
Observation end date	2012-04-14T09:18:40	2012-04-14T09:18:39
Read mode	TIMED	TIMED

Parameter	Planned	Actual
Obspar format version number	7	7
Obspar file type	PREDICTED	ACTUAL
Obspar update status	NONE	UPDATED
Number of optional ACIS chips dropped	0	0
On-chip summing requested	N	N
Subarray requested	NONE	NONE
Alternating exposures requested	N	N
[s] Primary exposure time	3.2	3.2

2.3 Star Slots

2.4 FID Slots

A Summary

A.1 Status

V&V Scientist	Beth Sundheim
V&V Date (YYYY-MM-DD)	2012.04.16
V&V Edition	1
V&V Disposition and Status	OK
V&V Charge Time	3.2854297664165

A.2 Comments