

V&V Reference Report

L2 ASCDS Version : 8.4.5

Observation 54508 - L2 Version 1
Chandra X-Ray Center

L2 Processing Date : Jul 3 2012

Contents

1	Front	2
2	OBI	3
2.1	OBI	3
2.1.1	Images	3
2.1.2	Bias	3
2.1.3	Parameters	4
2.1.4	Events	4
2.2	Compared Parameters	5
2.3	Star Slots	6
2.4	FID Slots	6
A	Summary	7
A.1	Status	7
A.2	Comments	7

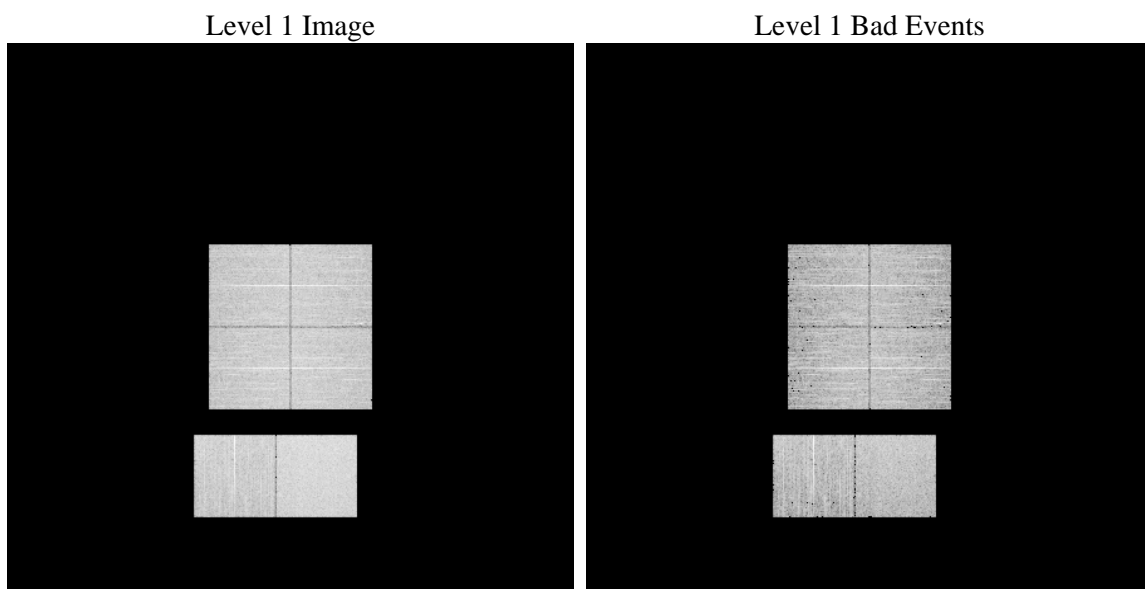
1 Front

seq_num	 	Sequence number
obs_id	54508	Observation id
title	ACIS-012367 diagnostics	Proposal title
observer	CHANDRA engineering request/realtime commanding	Principal investig
object	 	Source name
dtcycle	0	
cycle	P	events from which exps? Prim/Second/Both
ra_targ	0.0	Observer's specified target RA [deg]
dec_targ	0.0	Observer's specified target Dec [deg]
ra_nom	220.00610415567	Nominal RA [deg]
dec_nom	-10.028085970322	Nominal Dec [deg]
roll_nom	249.26694551537	Nominal Roll [deg]
revision	1	Processing version of data
ontime	8287.6010673046	Sum of GTIs [s]
livetime	8182.6584723961	Livetime [s]
ontime0	8287.5600273013	Sum of GTIs [s]
ontime1	8287.518987298	Sum of GTIs [s]
ontime2	8287.4779472947	Sum of GTIs [s]
ontime3	8287.6421073079	Sum of GTIs [s]
ontime6	8287.4369072914	Sum of GTIs [s]
ontime7	8287.6010673046	Sum of GTIs [s]
l2events	251694	Number of level 2 events

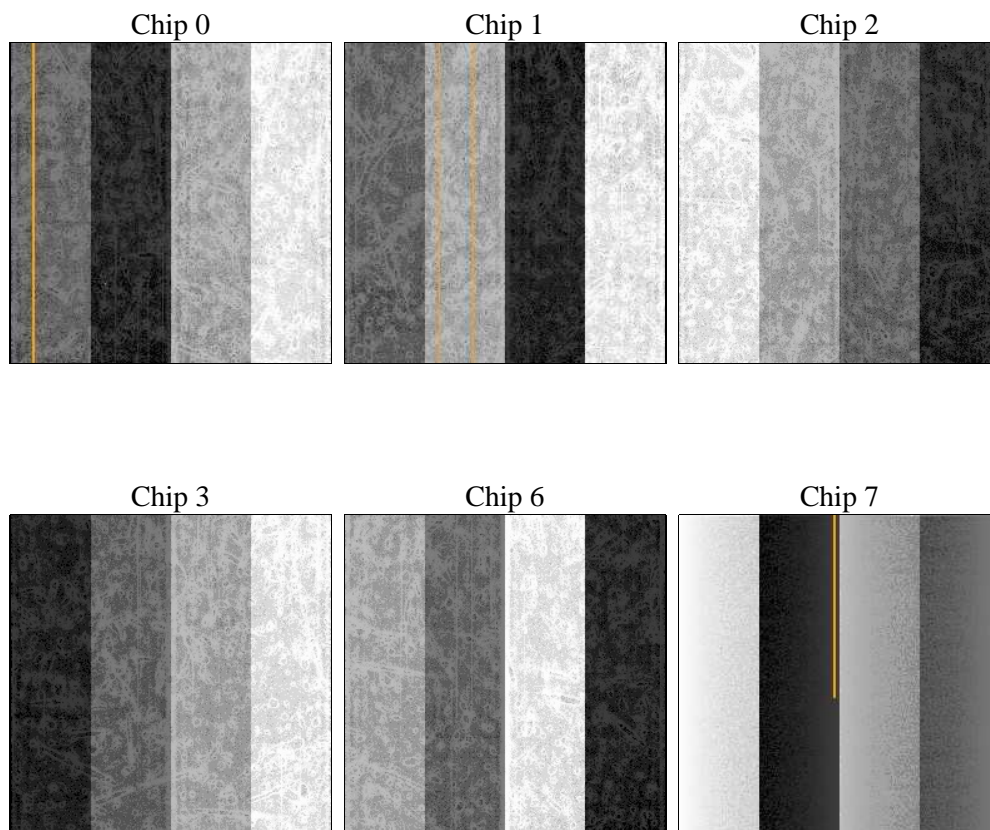
2 OBI

2.1 OBI

2.1.1 Images



2.1.2 Bias



2.1.3 Parameters

obi_num	0	Obi number	sched_exp_time	0.0	[s] Scheduled observation exposure time
ascdsver	8.4.5	Processing system revision	ontime	8287.6010673046	Sum of GTIs [s]
caldsver	4.5.0	 	ontime0	8287.5600273013	Sum of GTIs [s]
date	2012-07-03T12:51:56	Date and time of file creation	ontime1	8287.518987298	Sum of GTIs [s]
revision	1	Processing version of data	ontime2	8287.4779472947	Sum of GTIs [s]
			ontime3	8287.6421073079	Sum of GTIs [s]
			ontime6	8287.4369072914	Sum of GTIs [s]
			ontime7	8287.6010673046	Sum of GTIs [s]
			l1events	568662	Number of level 1 events

2.1.4 Events

	ccd 0	ccd 1	ccd 2	ccd 3	ccd 6	ccd 7		ccd 0	ccd 1	ccd 2	ccd 3	ccd 6	ccd 7
level 1 events	86044	87297	89191	90896	92576	122658	grade 0 events	20469	19862	21044	21112	20751	10752
rejected events	46475	47684	49696	51059	51672	55733		23%	22%	23%	23%	22%	8%
rejected %	54%	54%	55%	56%	55%	45%	grade 1 events	122	112	132	106	96	105
								0%	0%	0%	0%	0%	0%
							grade 2 events	7382	7957	7085	7105	7713	14558
								8%	9%	7%	7%	8%	11%
							grade 3 events	2789	2610	2812	2765	2688	5893
								3%	2%	3%	3%	2%	4%
							grade 4 events	2677	2620	2710	2747	2719	5749
								3%	3%	3%	3%	2%	4%
							grade 5 events	3104	3287	3031	3525	3427	8557
								3%	3%	3%	3%	3%	6%
							grade 6 events	6266	6583	5862	6115	7046	29998
								7%	7%	6%	6%	7%	24%
							grade 7 events	43235	44266	46515	47421	48136	47046
								50%	50%	52%	52%	51%	38%

2.2 Compared Parameters

Parameter	Planned	Actual	Parameter	Planned	Actual
Instrument	ACIS	ACIS	Obspar format version number	7	7
Detector	ACIS-012367	ACIS-012367	Obspar file type	PREDICTED	ACTUAL
Grating	NONE	NONE	Obspar update status	NONE	UPDATED
Data mode	FAINT	FAINT	Number of optional ACIS chips dropped	0	0
Observation mode	SECONDARY	SECONDARY	On-chip summing requested	N	N
[deg] Pointing RA	0	220.0061041556681	Subarray requested	NONE	NONE
[deg] Pointing Dec	0	-10.02808597032228	Alternating exposures requested	N	N
[deg] Pointing Roll	0.0	249.2669455153685	[s] Primary exposure time	3.2	3.2
[mm] SIM focus pos	-1.429586	-1.428180813131781			
[mm] SIM defocus	0.1037507710433287	0.1051558262725154			
[mm] SIM translation stage pos	250.455976	250.466033080201			
[mm] SIM translation stage offset	0	-0.01005468664627074			
[s] Observation start time (MET)	457652993.035176	457652992.01018			
Observation start date	2012-07-02T21:49:53	2012-07-02T21:49:52			
[s] Observation end time (MET)	457664192.185775	457664191.16078			
Observation end date	2012-07-03T00:56:32	2012-07-03T00:56:31			
Read mode	TIMED	TIMED			

2.3 Star Slots

2.4 FID Slots

A Summary

A.1 Status

V&V Scientist	Beth Sundheim
V&V Date (YYYY-MM-DD)	2012.07.03
V&V Edition	1
V&V Disposition and Status	OK
V&V Charge Time	8.2876010673046

A.2 Comments