

# V&V Reference Report

## L2 ASCDS Version : 8.5.1.1

Observation 5448 - L2 Version 3  
Chandra X-Ray Center

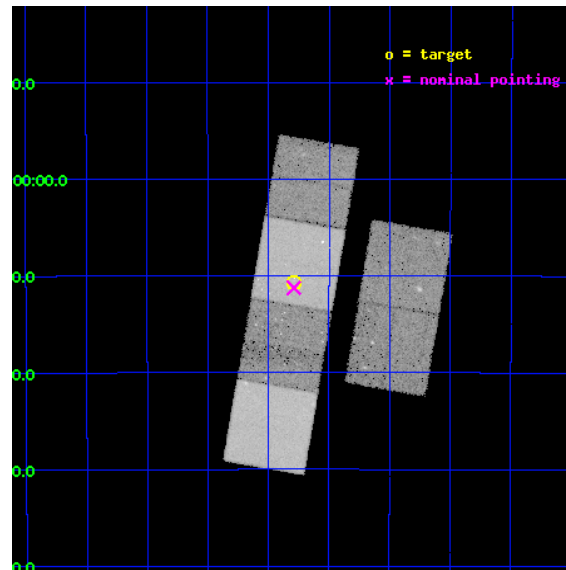
L2 Processing Date : Dec 26 2012

## Contents

<b>1</b>	<b>Front</b>	<b>2</b>
<b>2</b>	<b>OBI</b>	<b>3</b>
2.1	OBI . . . . .	3
2.1.1	Images . . . . .	3
2.1.2	Bias . . . . .	3
2.1.3	Parameters . . . . .	4
2.1.4	Events . . . . .	4
2.2	Compared Parameters . . . . .	5
2.3	Aspect . . . . .	6
2.4	Star Slots . . . . .	9
2.4.1	Slot 3 . . . . .	9
2.4.2	Slot 4 . . . . .	10
2.4.3	Slot 5 . . . . .	11
2.4.4	Slot 6 . . . . .	12
2.4.5	Slot 7 . . . . .	13
2.5	FID Slots . . . . .	14
2.5.1	Slot 0 . . . . .	14
2.5.2	Slot 1 . . . . .	15
2.5.3	Slot 2 . . . . .	16
<b>A</b>	<b>Summary</b>	<b>17</b>
A.1	Status . . . . .	17
A.2	Comments . . . . .	17

# 1 Front

seq_num	400378	Sequence number
obs_id	5448	Observation id
title	Faint quiescent neutron star soft X-ray transients	Proposal title
observer	dr Peter Jonker	Principal investigator
object	1H 1715-321	Source name
dtcycle	0	&#160
cycle	P	events from which exps? Prim/Second/Both
ra_targ	259.6975	Observer's specified target RA [deg]
dec_targ	-32.177778	Observer's specified target Dec [deg]
ra_nom	259.6974265007	Nominal RA [deg]
dec_nom	-32.187475370261	Nominal Dec [deg]
roll_nom	279.74147618127	Nominal Roll [deg]
revision	3	Processing version of data
ontime	20179.199924827	Sum of GTIs [s]
livetime	19923.678744923	Livetime [s]
ontime2	20179.199924827	Sum of GTIs [s]
ontime3	20179.199924827	Sum of GTIs [s]
ontime5	20179.199924827	Sum of GTIs [s]
ontime6	20175.958924621	Sum of GTIs [s]
ontime7	20179.199924827	Sum of GTIs [s]
ontime8	20169.476964146	Sum of GTIs [s]
l2events	285622	Number of level 2 events

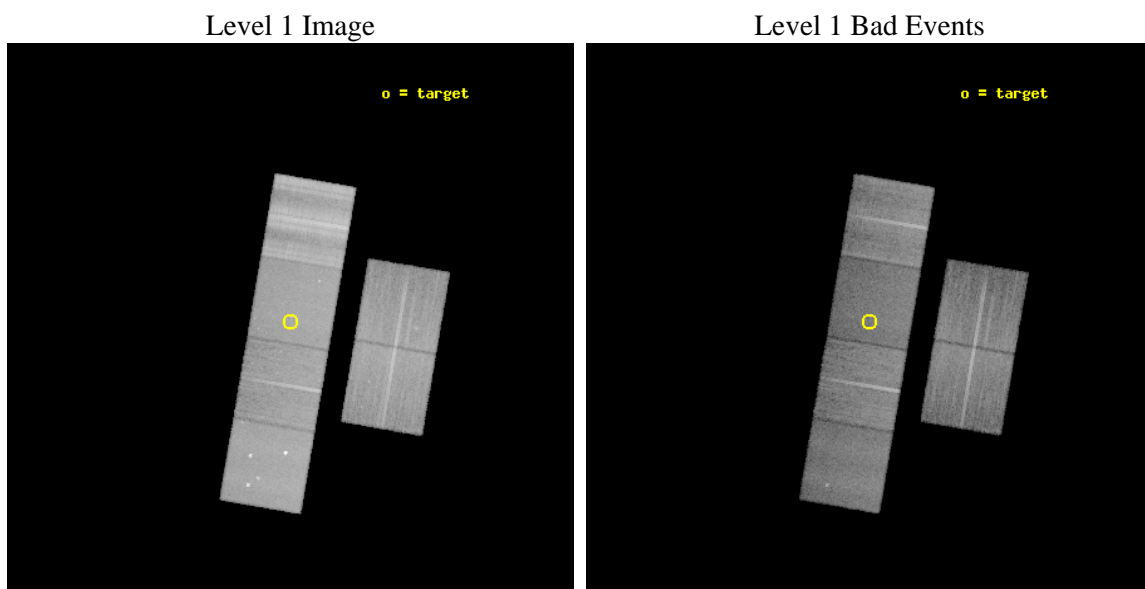




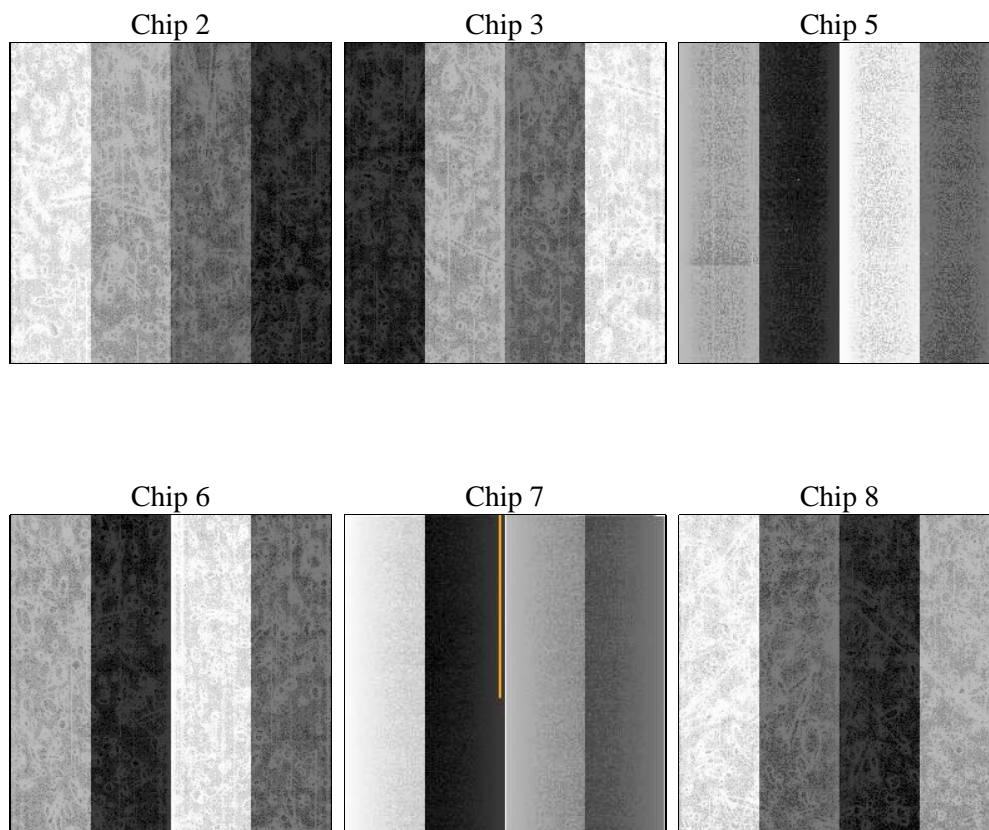
## 2 OBI

### 2.1 OBI

#### 2.1.1 Images



#### 2.1.2 Bias



### 2.1.3 Parameters

obi_num	1	Obi number	sched_exp_time	20000.000000	[s] Scheduled observation exposure time
ascdsver	8.5.1.1	Processing system revision	ontime	20179.199924827	Sum of GTIs [s]
caldsver	4.5.5	&#160	ontime2	20179.199924827	Sum of GTIs [s]
date	2012-12-26T13:28:23	Date and time of file creation	ontime3	20179.199924827	Sum of GTIs [s]
revision	3	Processing version of data	ontime5	20179.199924827	Sum of GTIs [s]
			ontime6	20175.958924621	Sum of GTIs [s]
			ontime7	20179.199924827	Sum of GTIs [s]
			ontime8	20169.476964146	Sum of GTIs [s]
			l1events	1361075	Number of level 1 events

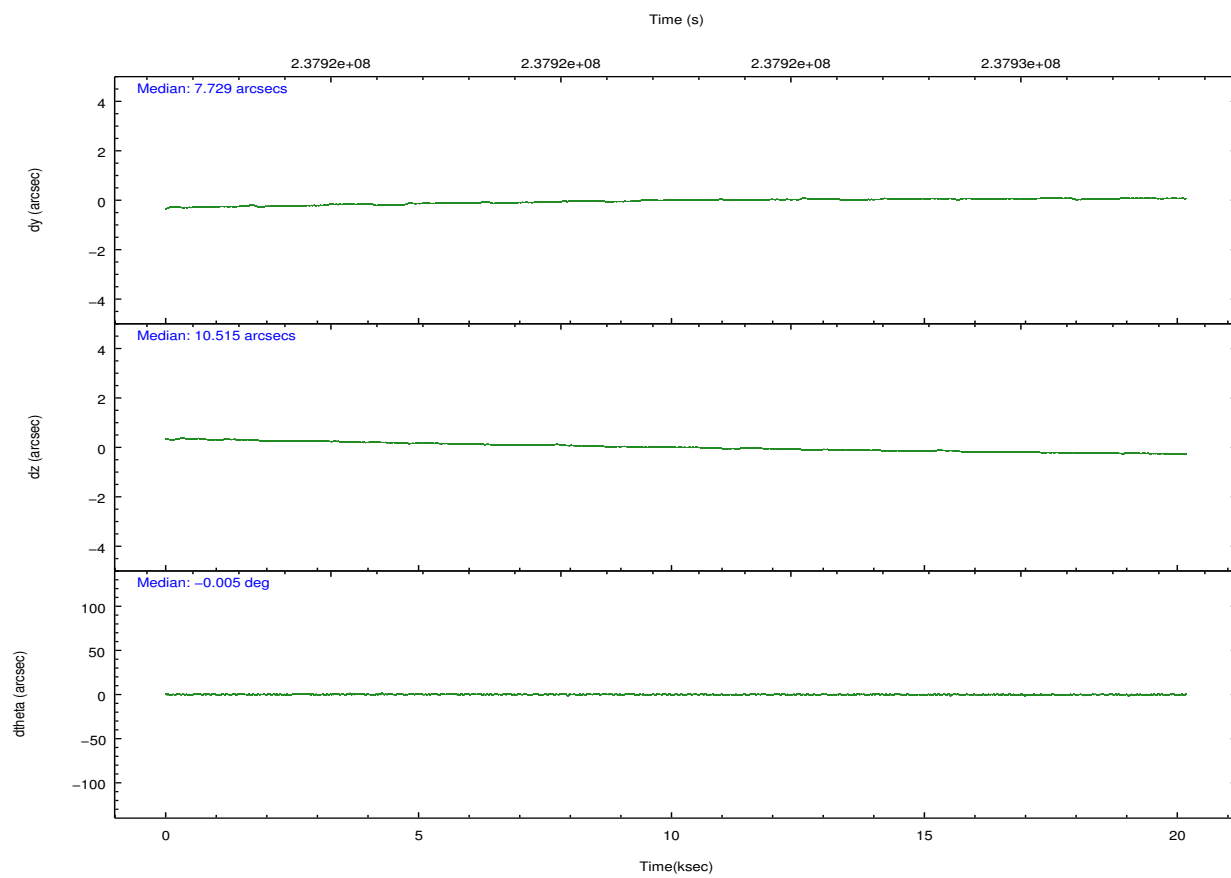
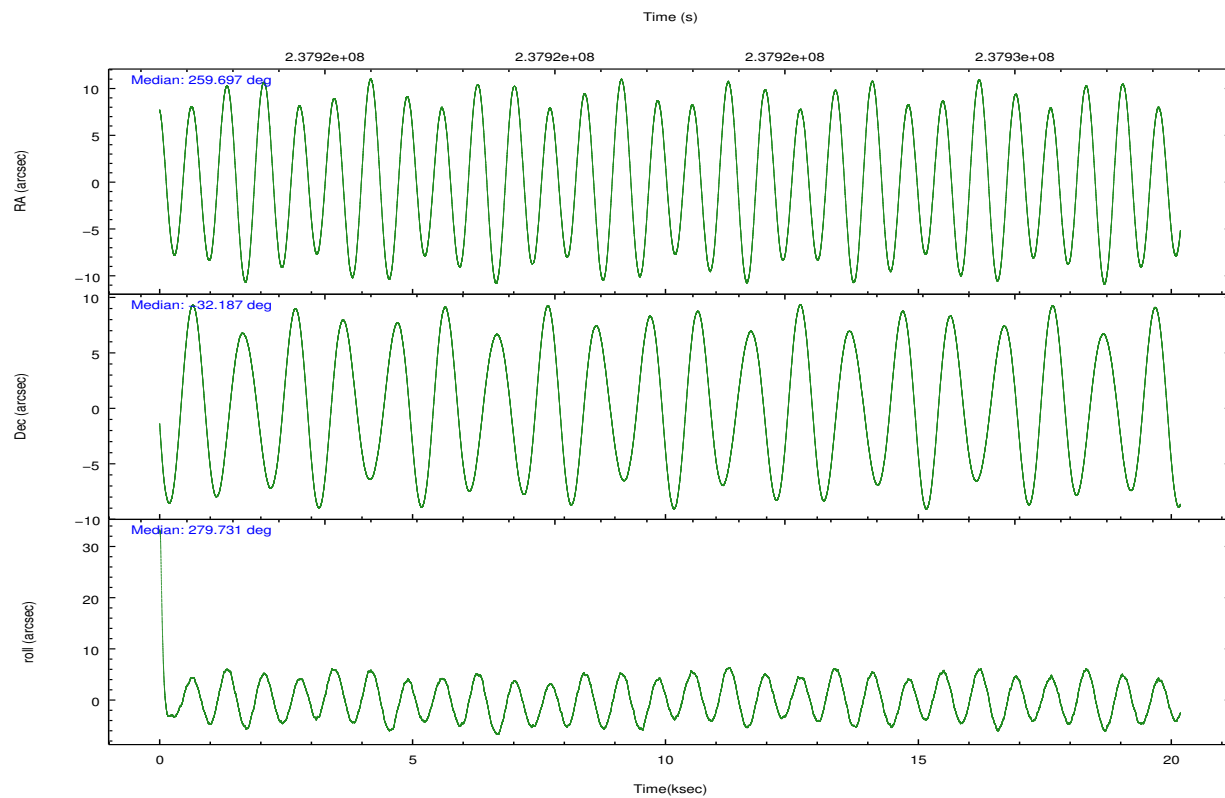
### 2.1.4 Events

	ccd 2	ccd 3	ccd 5	ccd 6	ccd 7	ccd 8		ccd 2	ccd 3	ccd 5	ccd 6	ccd 7	ccd 8
level 1 events	190888	174436	246589	191936	217198	340028	grade 0 events	13232	11154	17226	12452	9165	46003
rejected events	162474	149372	130715	163955	124447	185993		6%	6%	6%	6%	4%	13%
rejected %	85%	85%	53%	85%	57%	54%	grade 1 events	117	101	395	96	264	389
								0%	0%	0%	0%	0%	0%
							grade 2 events	6961	5922	34637	7168	19749	25665
								3%	3%	14%	3%	9%	7%
							grade 3 events	1850	1863	4768	1984	8291	24526
								0%	1%	1%	1%	3%	7%
							grade 4 events	2212	1815	4783	1858	8335	21701
								1%	1%	1%	0%	3%	6%
							grade 5 events	5916	6510	16578	6921	19744	10686
								3%	3%	6%	3%	9%	3%
							grade 6 events	4433	4547	55822	4773	48268	37498
								2%	2%	22%	2%	22%	11%
							grade 7 events	156167	142524	112380	156684	103382	173560
								81%	81%	45%	81%	47%	51%

## 2.2 Compared Parameters

Parameter	Planned	Actual	Parameter	Planned	Actual
Instrument	ACIS	ACIS	Obspar format version number	7	7
Detector	ACIS-235678	ACIS-235678	Obspar file type	PREDICTED	ACTUAL
Grating	NONE	NONE	Obspar update status	NONE	UPDATED
Data mode	VFAINT	VFAINT	Number of optional ACIS chips dropped	0	0
Observation mode	POINTING	POINTING	On-chip summing requested	N	N
[deg] Pointing RA	259.676526	259.6974265007021	Subarray requested	NONE	NONE
[deg] Pointing Dec	-32.166742	-32.1874753702608	Alternating exposures requested	N	N
[deg] Pointing Roll	279.573722	279.7414761812738	[s] Primary exposure time	0.000000	3.2
[mm] SIM focus pos	-0.684267	-0.6828225247311905			
[mm] SIM defocus	0	0.001444936568705701			
[mm] SIM translation stage pos	-190.132523	-190.1400660498719			
[mm] SIM translation stage offset	0	0.00754346686406393			
[s] Observation start time (MET)	237912599.184000	237911412.47114			
Observation start date	2005-07-16T14:48:55	2005-07-16T14:30:12			
[s] Observation end time (MET)	237932599.184000	237932992.30963			
Observation end date	2005-07-16T20:22:15	2005-07-16T20:29:52			
Read mode	TIMED	TIMED			

## 2.3 Aspect

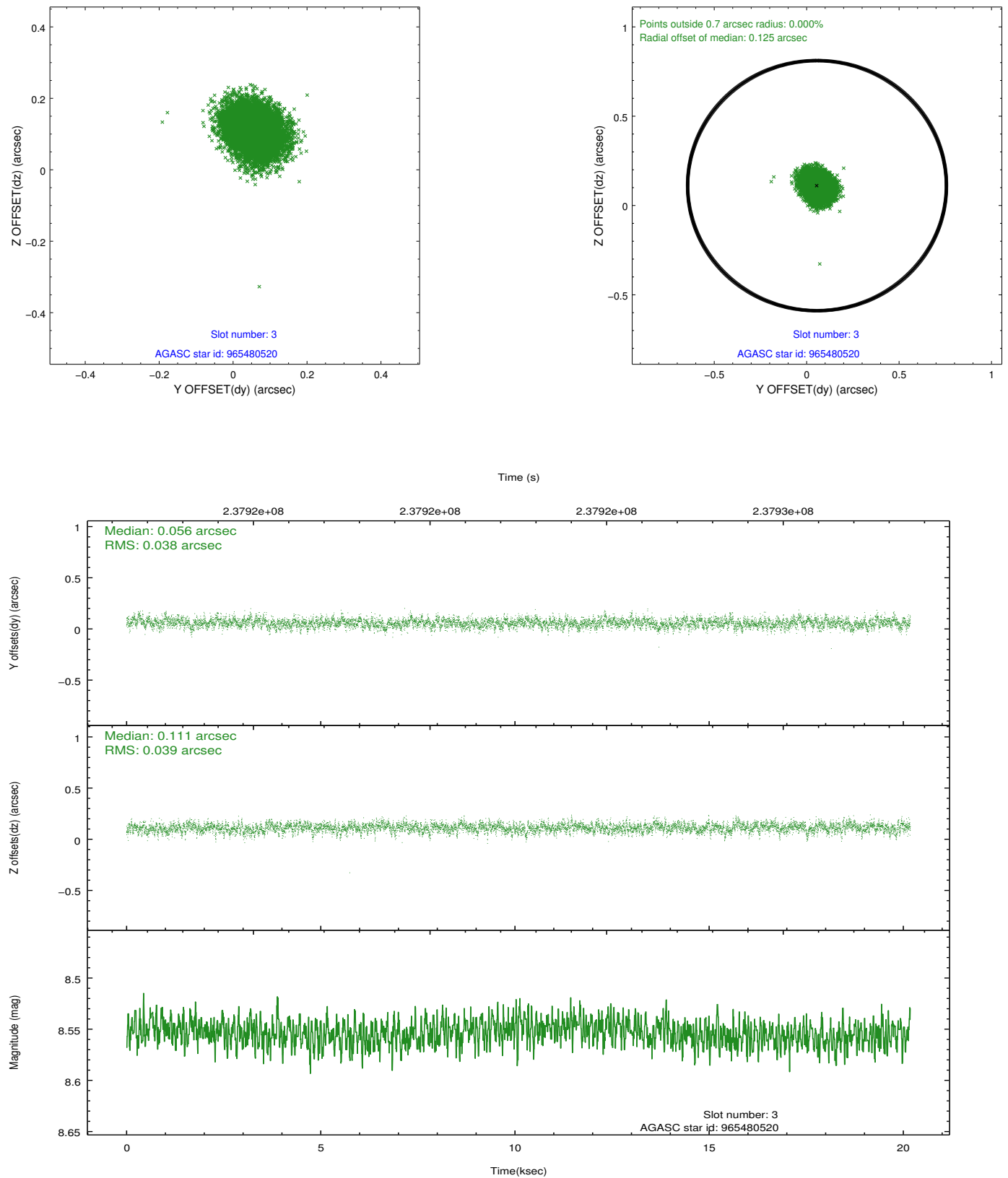


### Slot Statistics

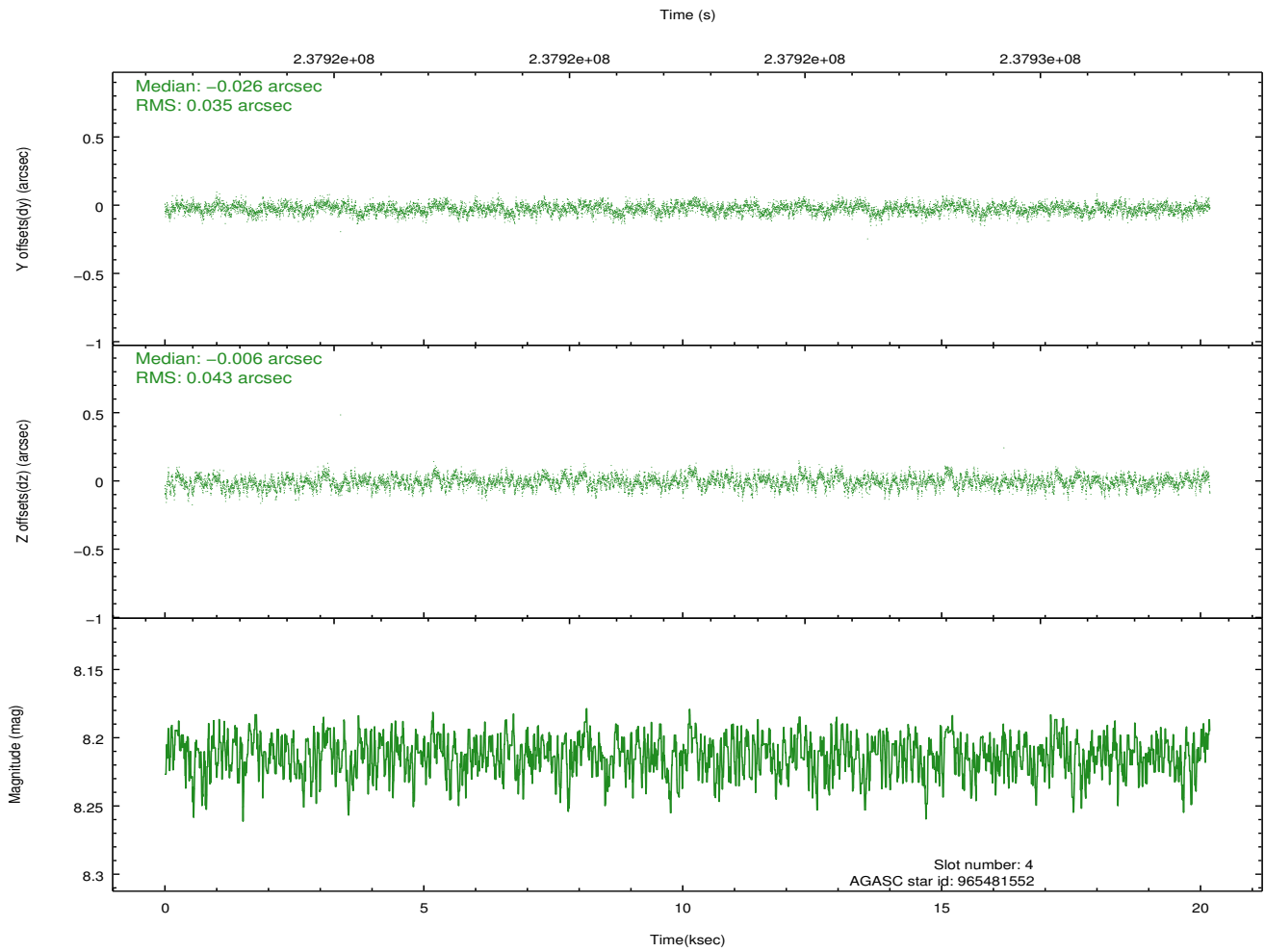
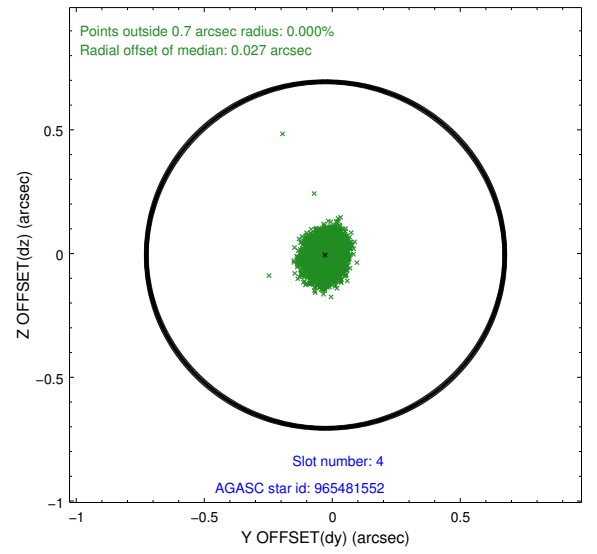
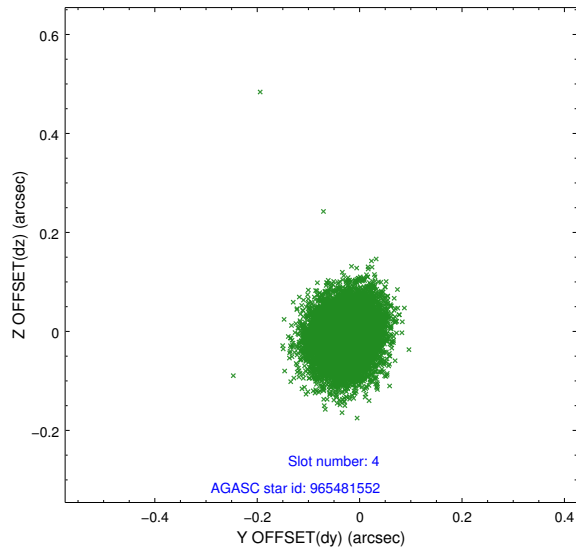
slot	status	id	mag	n_pts	med_dy	med_dz	dr1	dr2	ra	dec	mean_y	mean_z
0	FID	ACIS-S-2	7.11	4922	-0.044	-0.016	0.008	0.014	0.000000	0.000000	-760.45	-1731.82
1	FID	ACIS-S-4	7.21	4923	0.102	0.026	0.009	0.018	0.000000	0.000000	2152.84	176.58
2	FID	ACIS-S-5	7.23	4923	-0.089	-0.001	0.008	0.014	0.000000	0.000000	-1813.15	170.34
3	GUIDE	965480520	8.55	9844	0.056	0.111	0.058	0.095	259.583195	-32.326000	518.63	-374.93
4	GUIDE	965481552	8.21	9838	-0.026	-0.006	0.059	0.094	259.329983	-32.065880	-531.08	-981.90
5	GUIDE	965482744	8.23	9845	-0.032	-0.083	0.084	0.125	259.140806	-32.338645	343.72	-1710.29
6	GUIDE	964956776	7.97	9846	0.066	-0.026	0.077	0.125	260.357236	-31.581931	-1722.46	2407.37
7	GUIDE	965478696	8.22	9836	-0.061	0.006	0.065	0.103	260.391489	-32.105329	151.39	2185.92

## 2.4 Star Slots

### 2.4.1 Slot 3

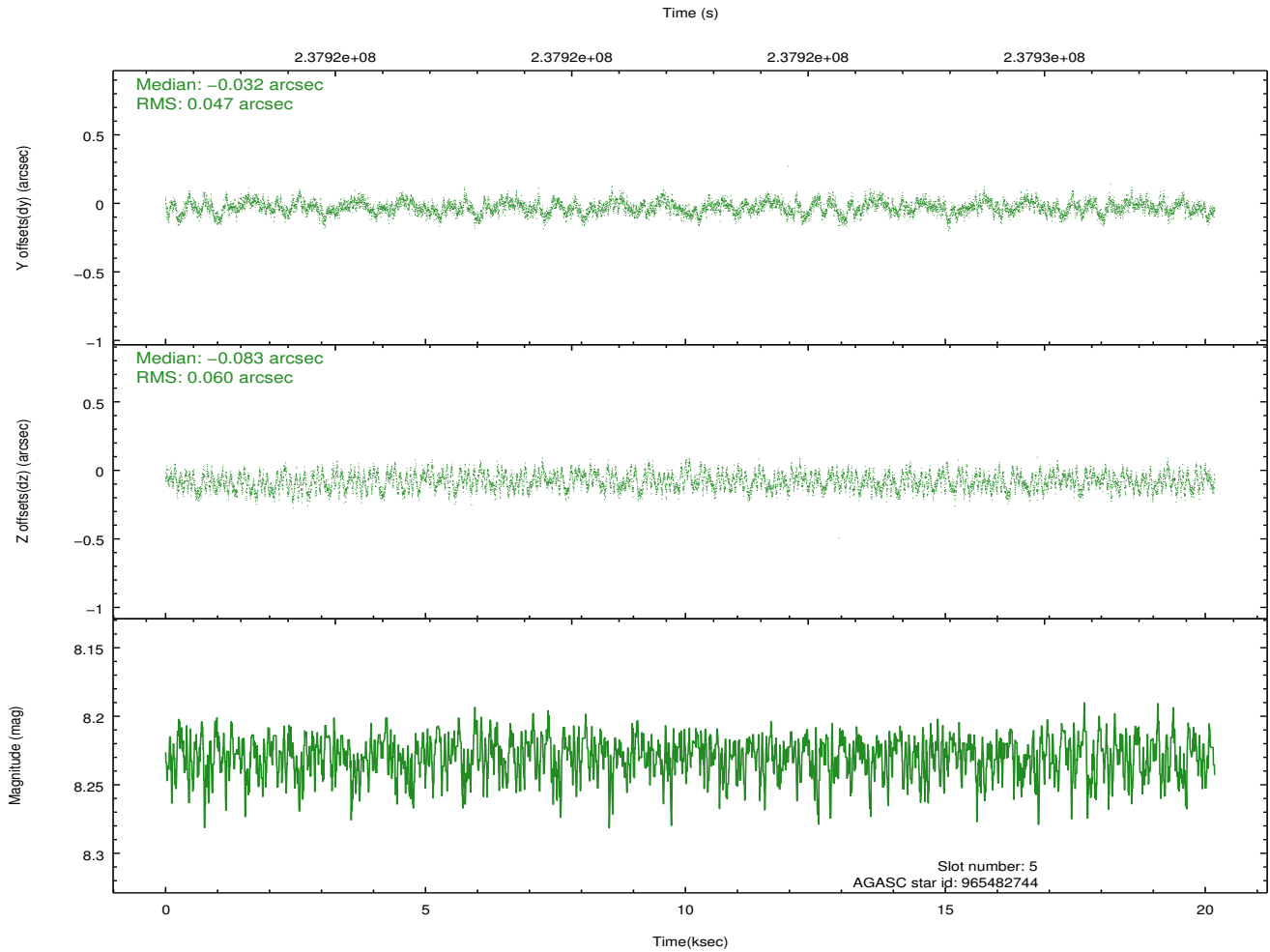
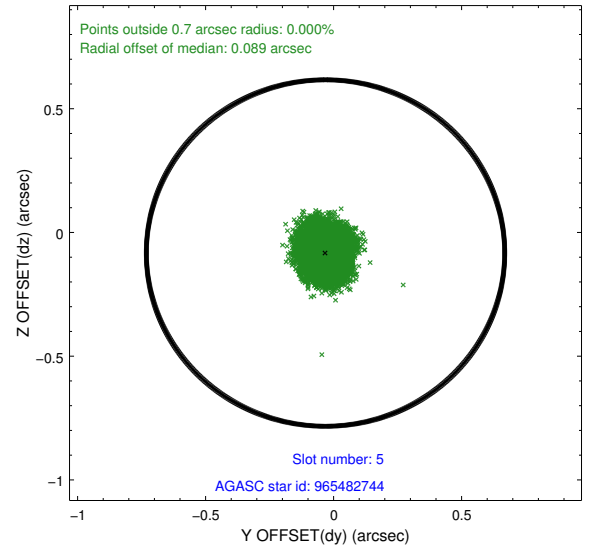
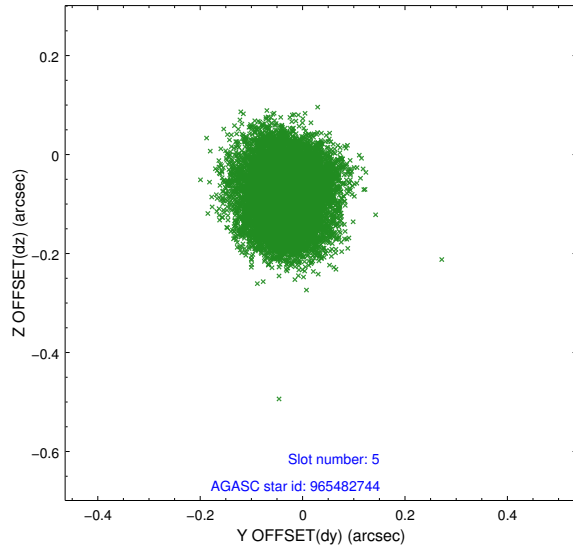


## 2.4.2 Slot 4

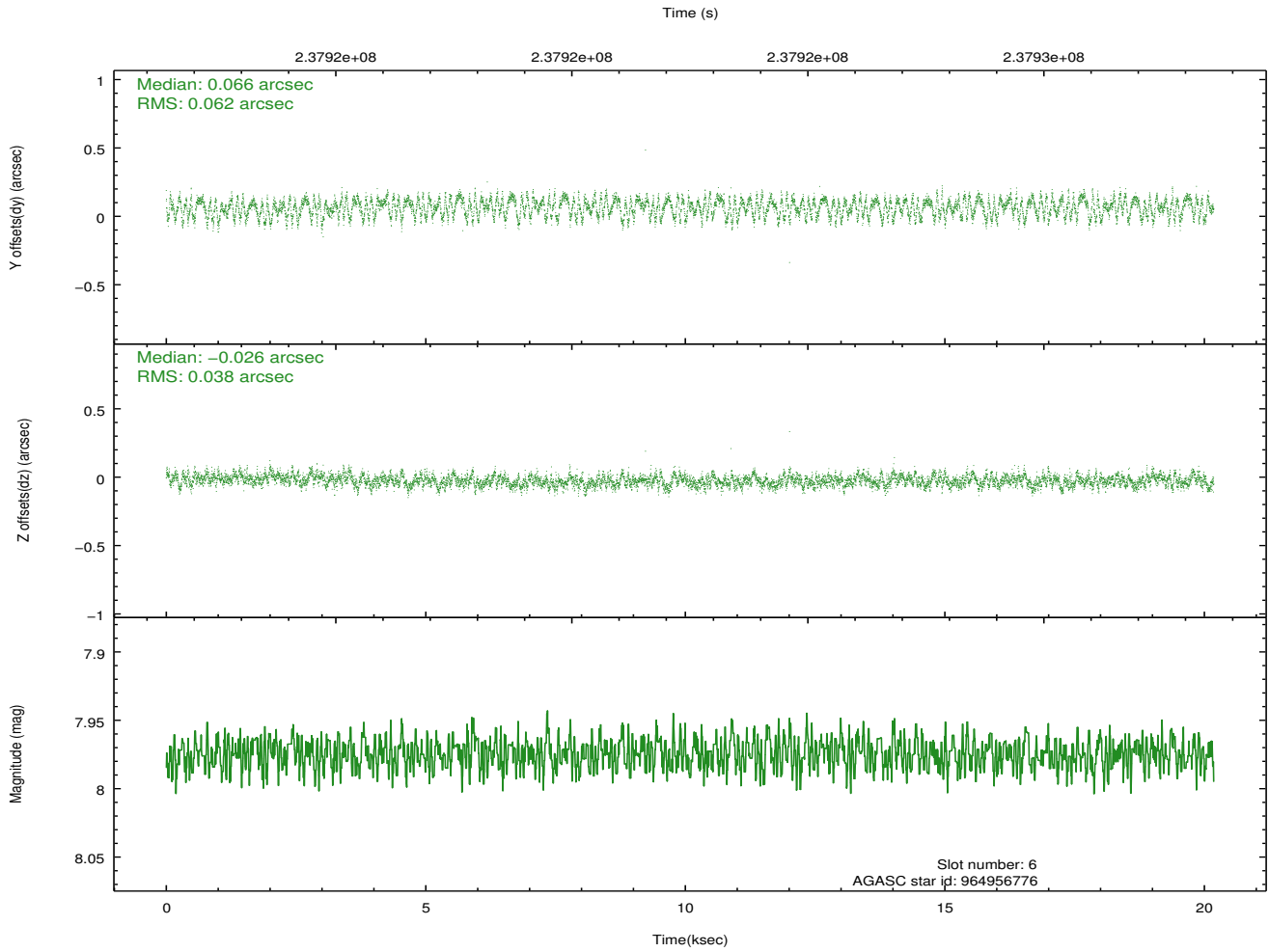
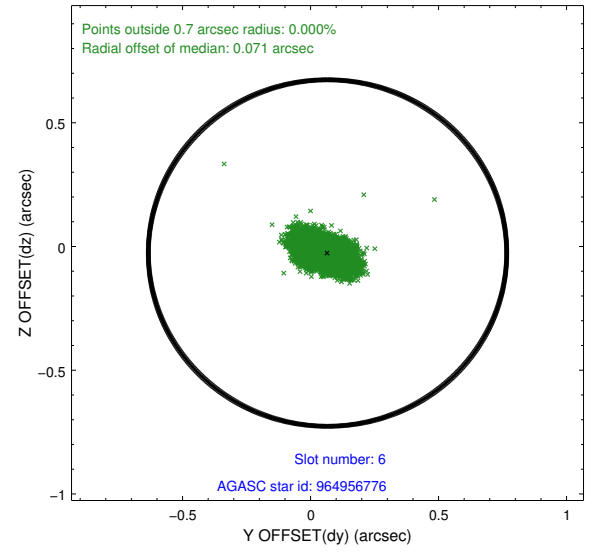
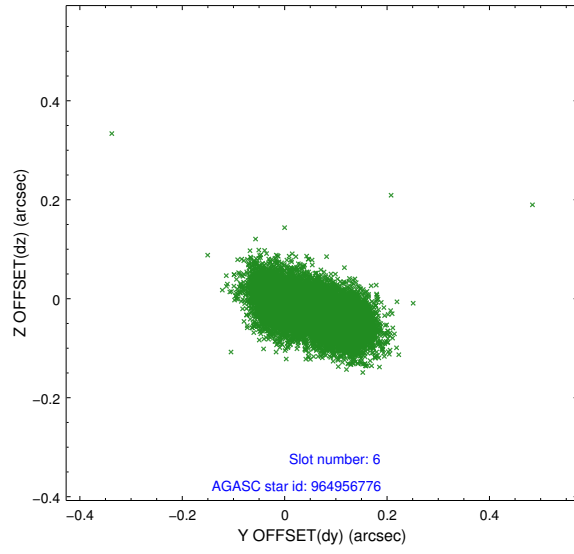




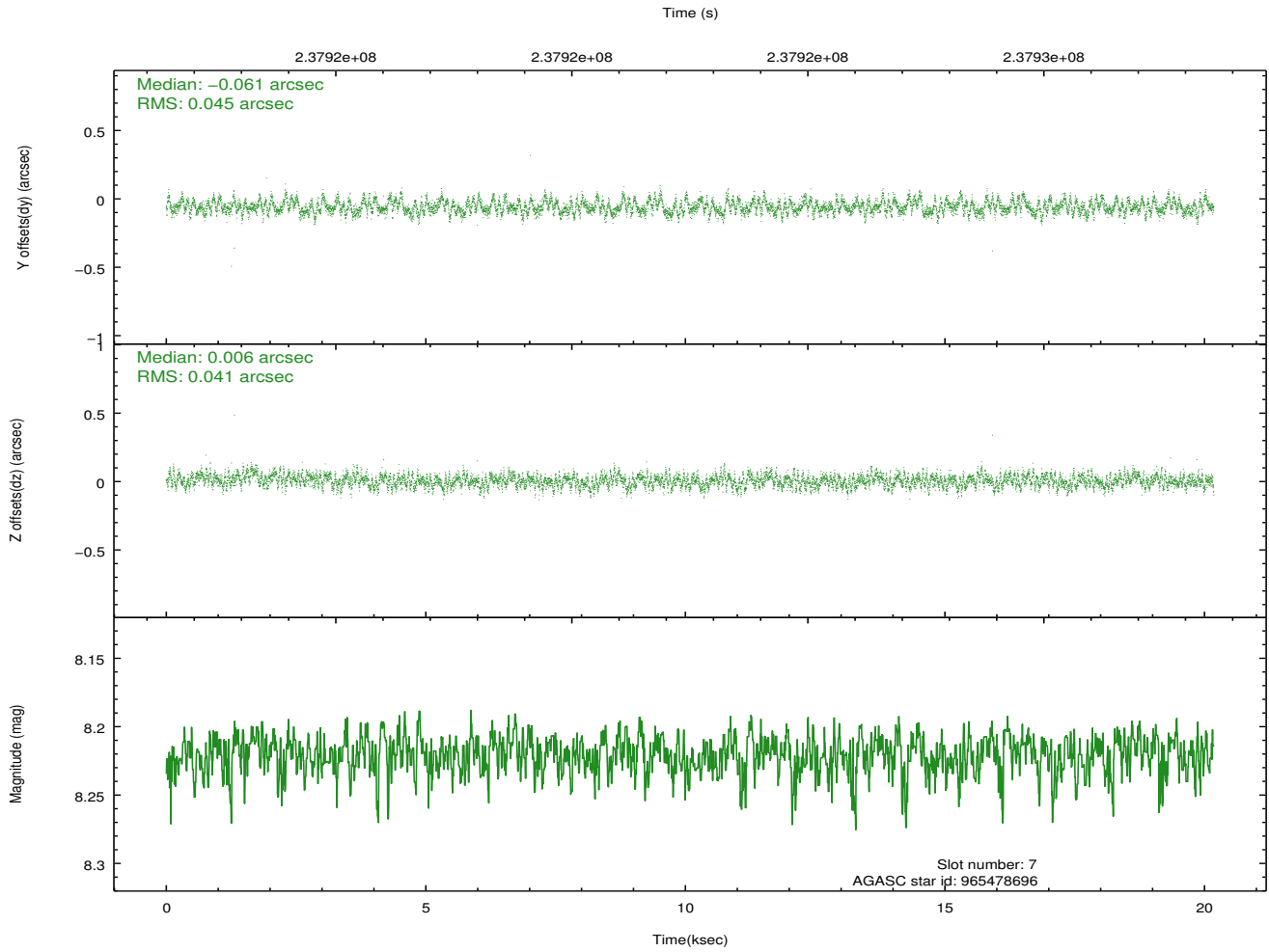
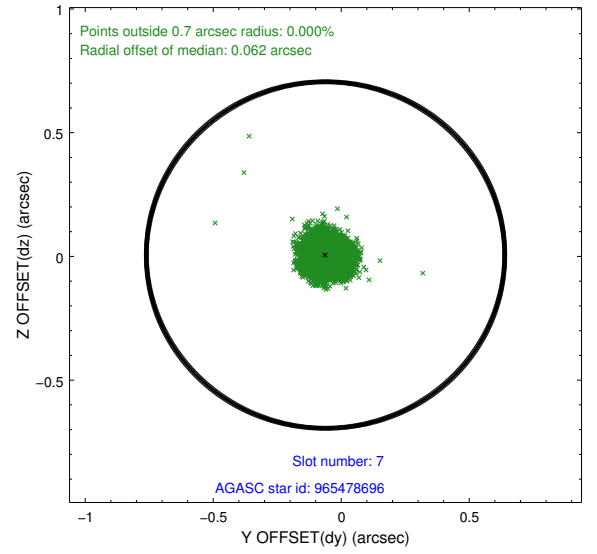
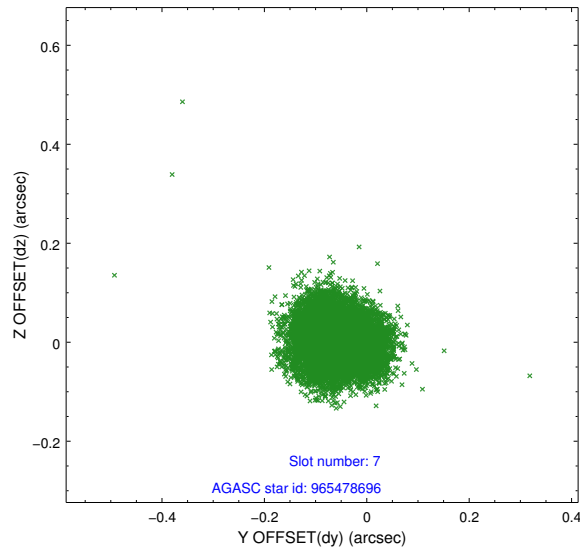
### 2.4.3 Slot 5



## 2.4.4 Slot 6

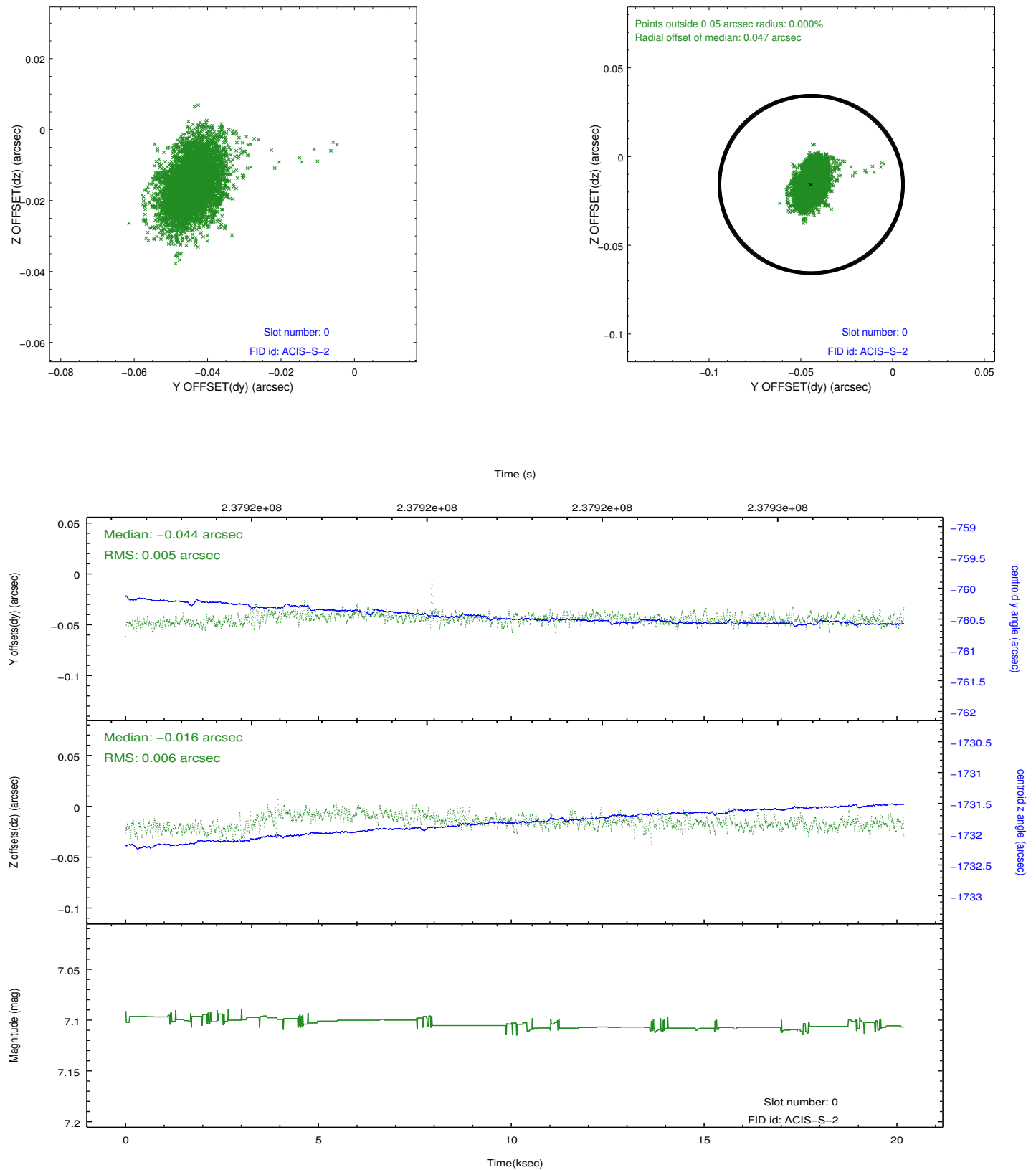


## 2.4.5 Slot 7

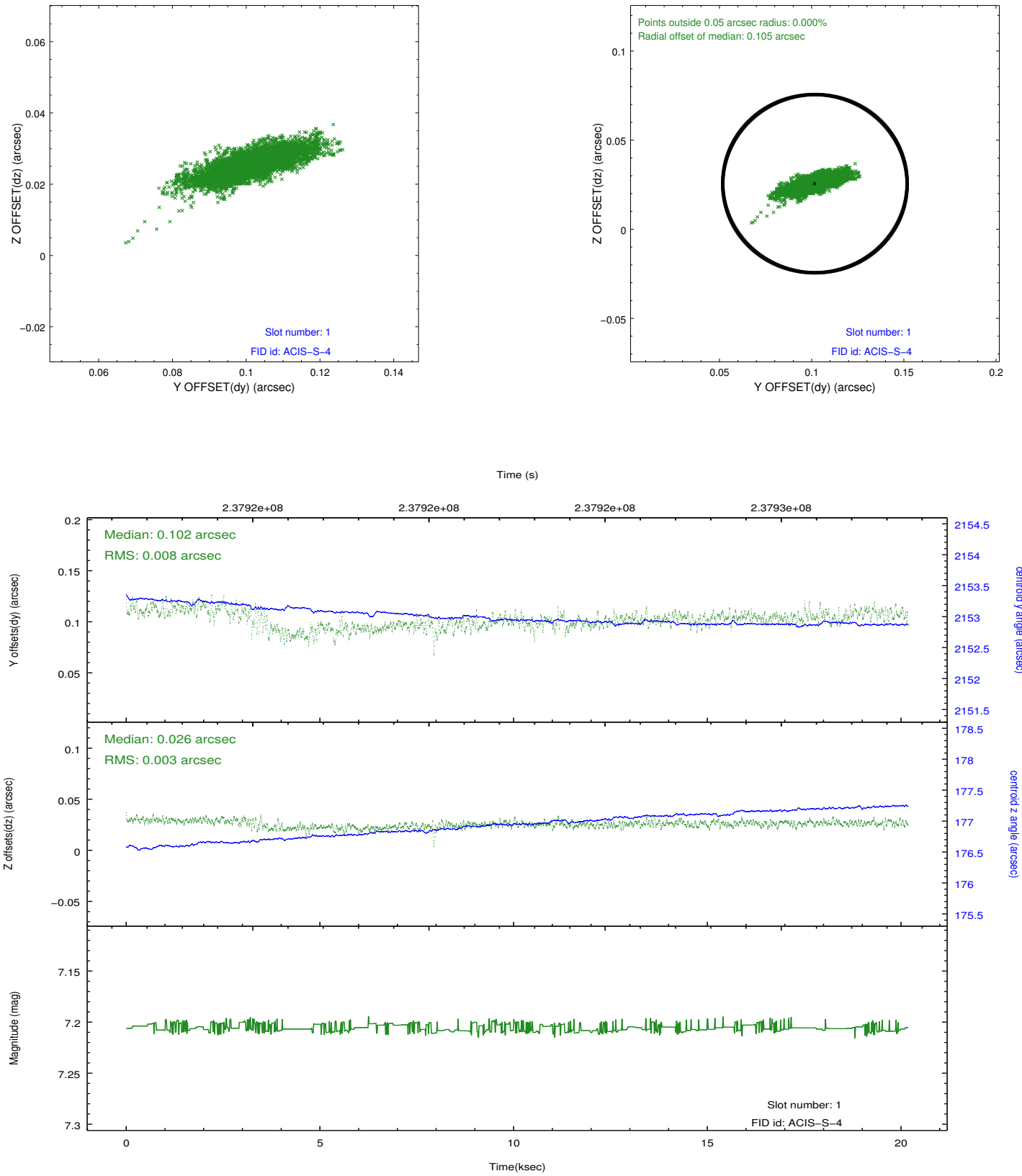


## 2.5 FID Slots

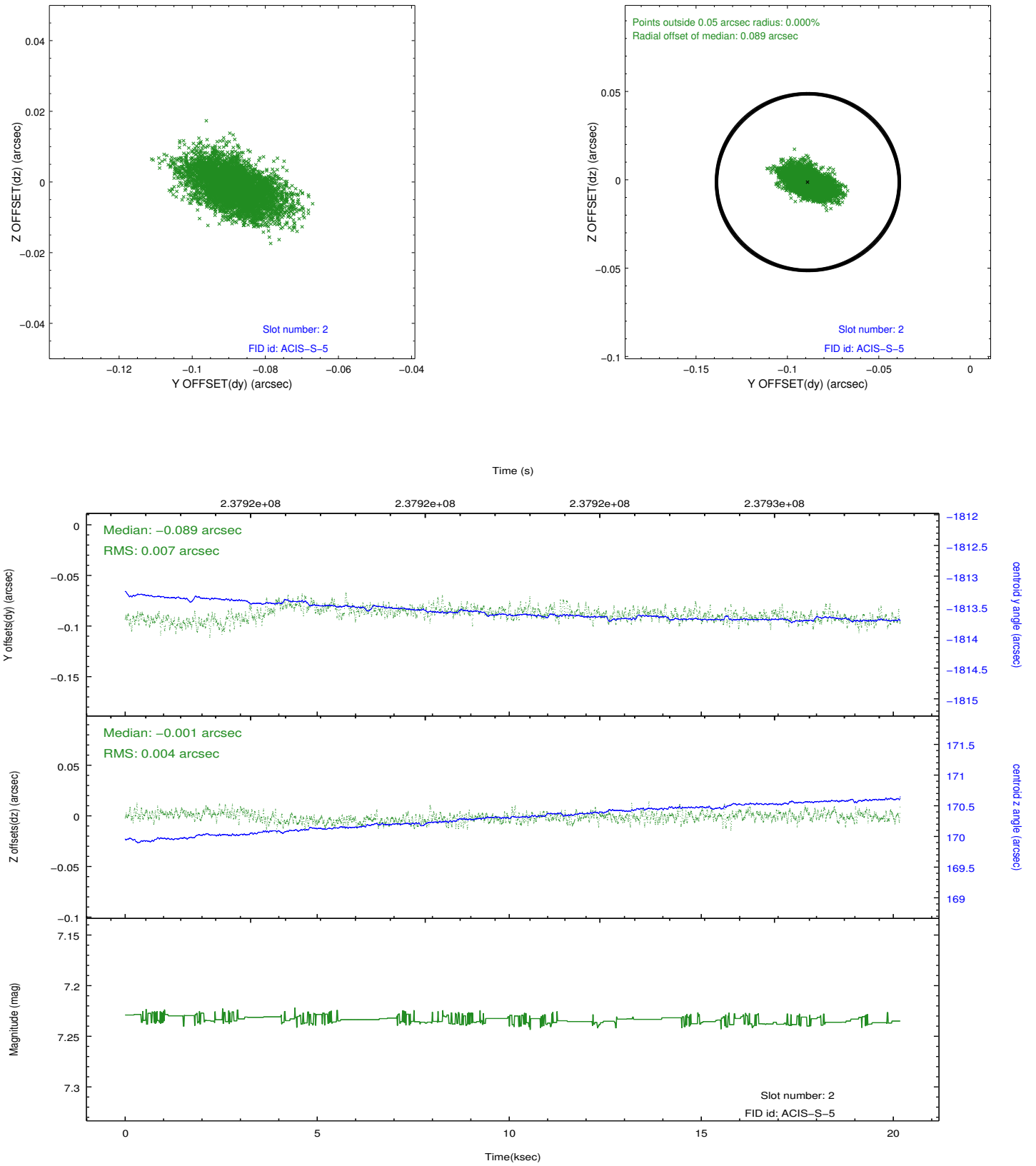
### 2.5.1 Slot 0



## 2.5.2 Slot 1



### 2.5.3 Slot 2



## A Summary

### A.1 Status

V&V Scientist	Jen Lauer
V&V Date (YYYY-MM-DD)	2013.01.23
V&V Edition	1
V&V Disposition and Status	OK
V&V Charge Time	20.17919

### A.2 Comments