

# V&V Reference Report

## L2 ASCDS Version : 7.6.7

Observation 5418 - L2 Version 002  
Chandra X-Ray Center

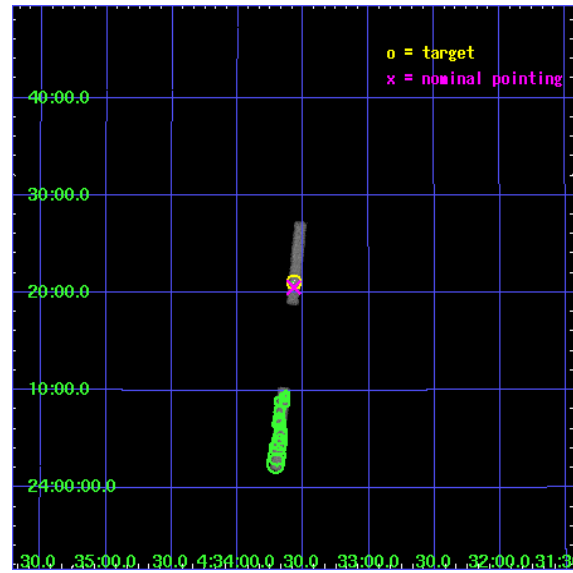
L2 Processing Date: Feb 16 2006

## Contents

<b>1</b>	<b>Front</b>	<b>2</b>
<b>2</b>	<b>OBI</b>	<b>3</b>
2.1	OBI . . . . .	3
2.1.1	Images . . . . .	3
2.1.2	Bias . . . . .	3
2.1.3	Parameters . . . . .	4
2.1.4	Events . . . . .	4
2.2	Compared Parameters . . . . .	5
2.3	Aspect . . . . .	6
2.4	Star Slots . . . . .	9
2.4.1	Slot 3 . . . . .	9
2.4.2	Slot 4 . . . . .	10
2.4.3	Slot 5 . . . . .	11
2.4.4	Slot 6 . . . . .	12
2.5	FID Slots . . . . .	13
2.5.1	Slot 0 . . . . .	13
2.5.2	Slot 1 . . . . .	14
2.5.3	Slot 2 . . . . .	15
<b>3</b>	<b>Point Sources</b>	<b>16</b>
<b>A</b>	<b>Summary</b>	<b>17</b>
A.1	Status . . . . .	17
A.2	Comments . . . . .	17

# 1 Front

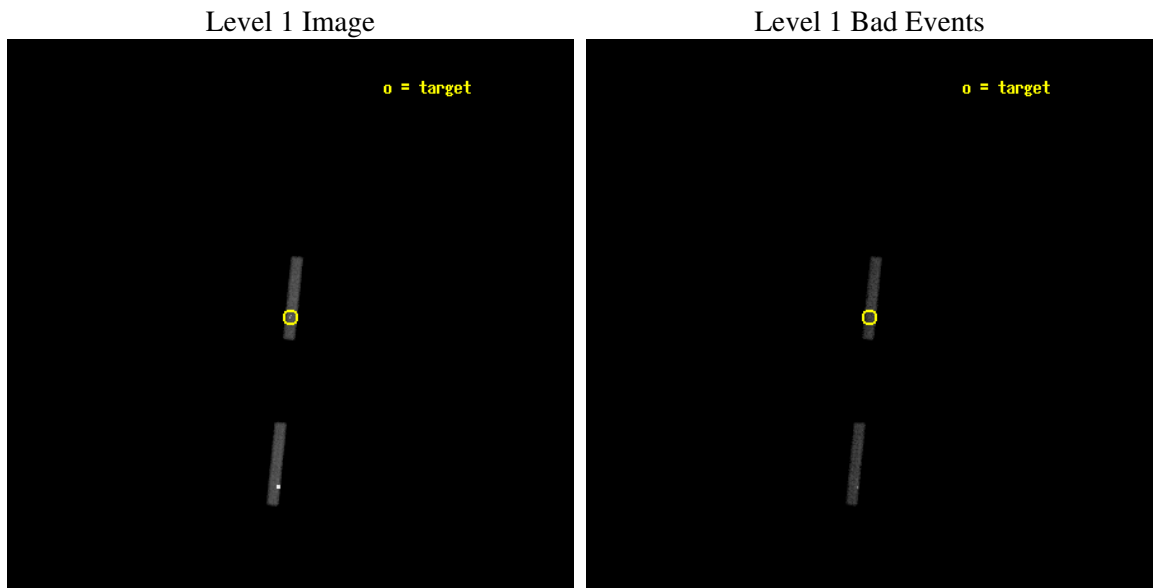
seq_num	200351
obs_id	5418
title	Untangling the Accretion Spots on Classical T Tauri Stars
observer	Dr. Andisheh Mahdavi
object	GK Tau
dtcycle	0
cycle	P
ra_targ	68.39375
dec_targ	24.3525
ra_nom	68.392943026198
dec_nom	24.342867503338
roll_nom	275.73553449639
revision	2
ontime	15029.917920023
livetime	13889.839863987
ontime5	15029.917920023
ontime7	15029.917920023
l2events	17909



## 2 OBI

### 2.1 OBI

#### 2.1.1 Images



#### 2.1.2 Bias

Chip 5

Chip 7



### 2.1.3 Parameters

obi_num	0
ascdsver	7.6.7
caldbver	3.2.1
date	2006-02-16T17:17:59
revision	2

sched_exp_time	15000.000000
ontime	16902.461952031
ontime5	16902.461952031
ontime7	16902.461952031
l1events	75743

### 2.1.4 Events

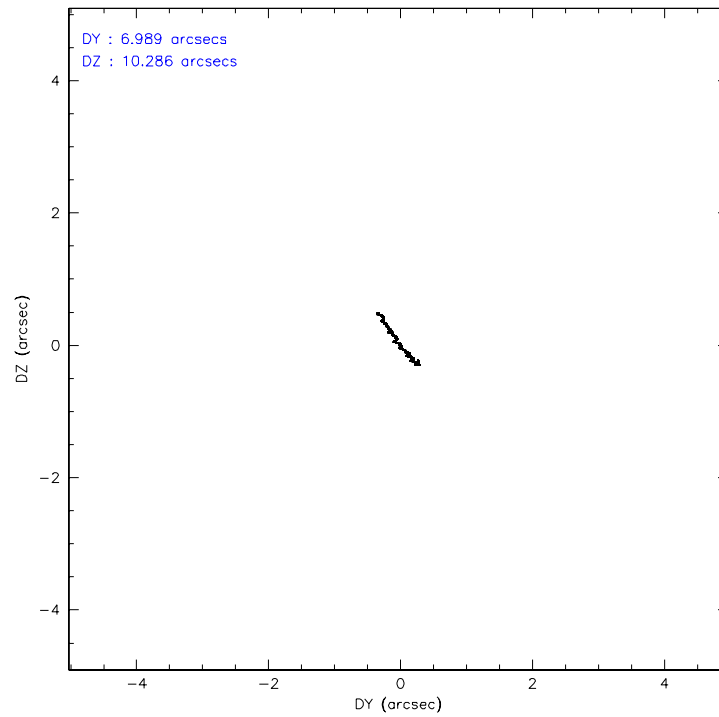
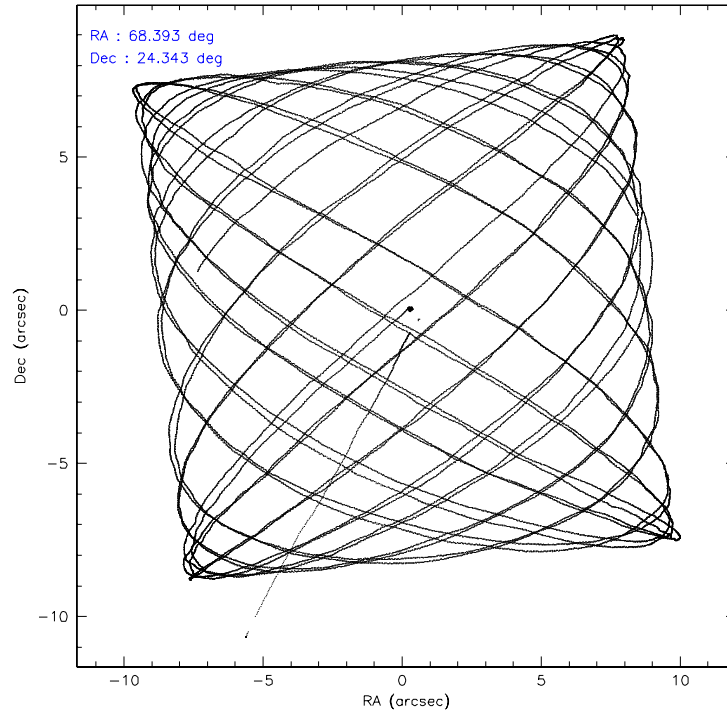
	ccd 5	ccd 7
level 1 events	53121	22622
rejected events	16605	13029
rejected %	31%	57%

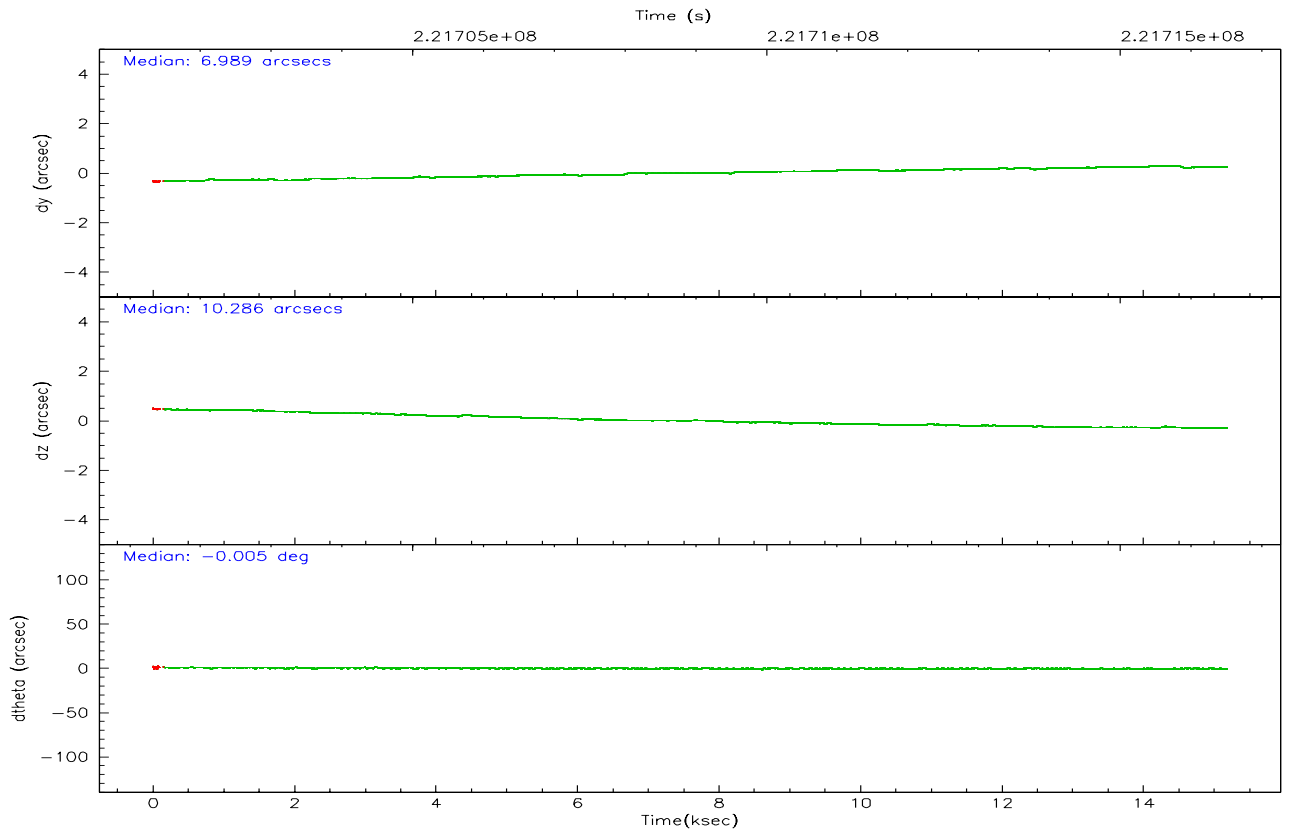
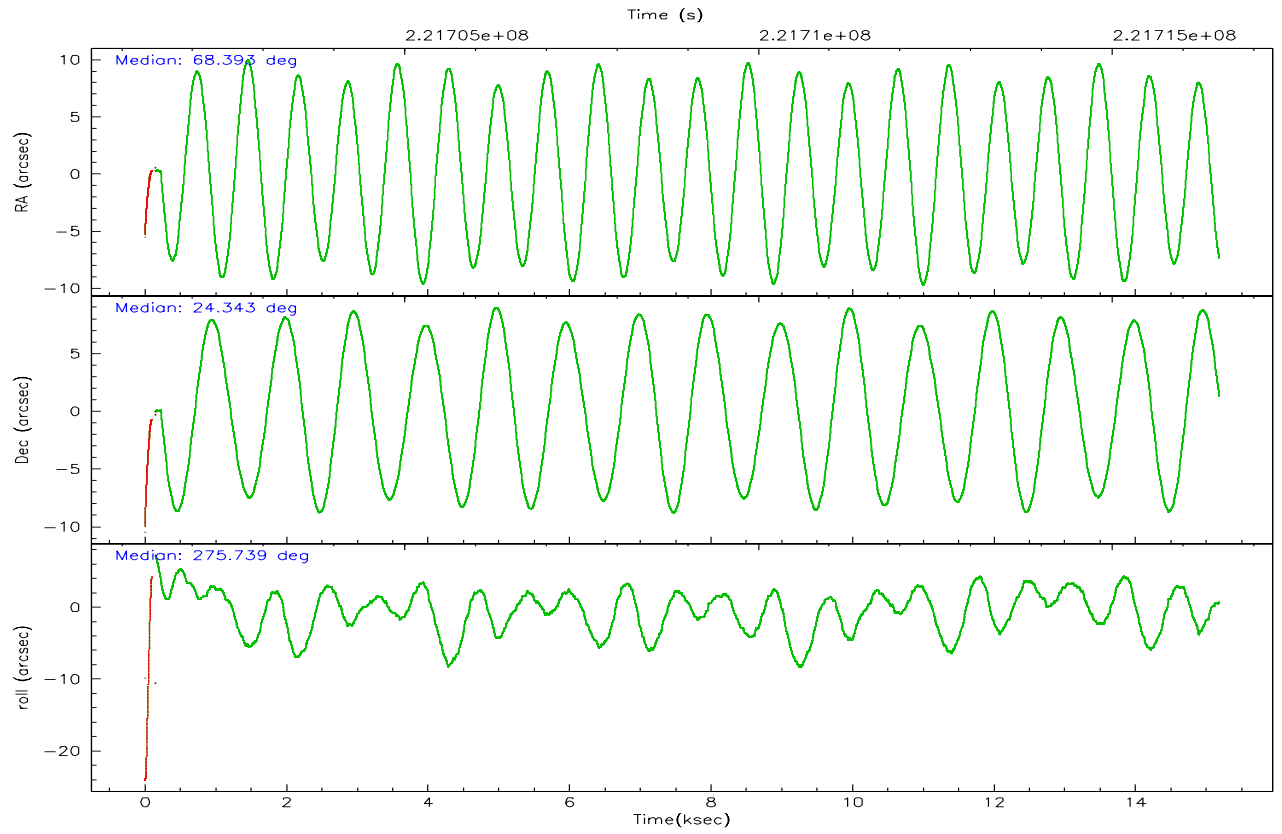
	ccd 5	ccd 7
grade 0 events	23734	1098
	44%	4%
grade 1 events	63	15
	0%	0%
grade 2 events	8082	2591
	15%	11%
grade 3 events	552	1027
	1%	4%
grade 4 events	2700	1024
	5%	4%
grade 5 events	1190	1587
	2%	7%
grade 6 events	6001	4845
	11%	21%
grade 7 events	10799	10435
	20%	46%

## 2.2 Compared Parameters

Parameter	Planned	Actual	Parameter	Planned	Actual
Instrument	ACIS	ACIS	Obspar format version number	6	6
Detector	ACIS-57	ACIS-57	Obspar file type	PREDICTED	ACTUAL
Grating	NONE	NONE	Obspar update status	NONE	UPDATED
Data mode	FAINT	FAINT	On-chip summing requested	N	N
Observation mode	POINTING	POINTING	Subarray requested	1/8	1/8
Pointing RA	68.375152	68.39294302619766	Subarray start row	0	449
Pointing Dec	24.364744	24.34286750333816	Subarray row count	1024	128
Pointing Roll	275.586263	275.7355344963944	Alternating exposures requested	N	N
SIM focus pos (mm)	-0.684267	-0.6828225247311905	Primary exposure time	0.000000	0.5
SIM defocus (mm)	0	0.001444936568705701			
SIM translation stage pos (mm)	-190.132523	-190.1400660498719			
SIM translation stage offset (mm)	0	0.00754346686406393			
Observation start time	221701511.184000	221699608.39692			
Observation start date	2005-01-09T23:44:07	2005-01-09T23:13:28			
Observation end time	221716511.184000	221717377.79772			
Observation end date	2005-01-10T03:54:07	2005-01-10T04:09:37			
Read mode	TIMED	TIMED			

## 2.3 Aspect



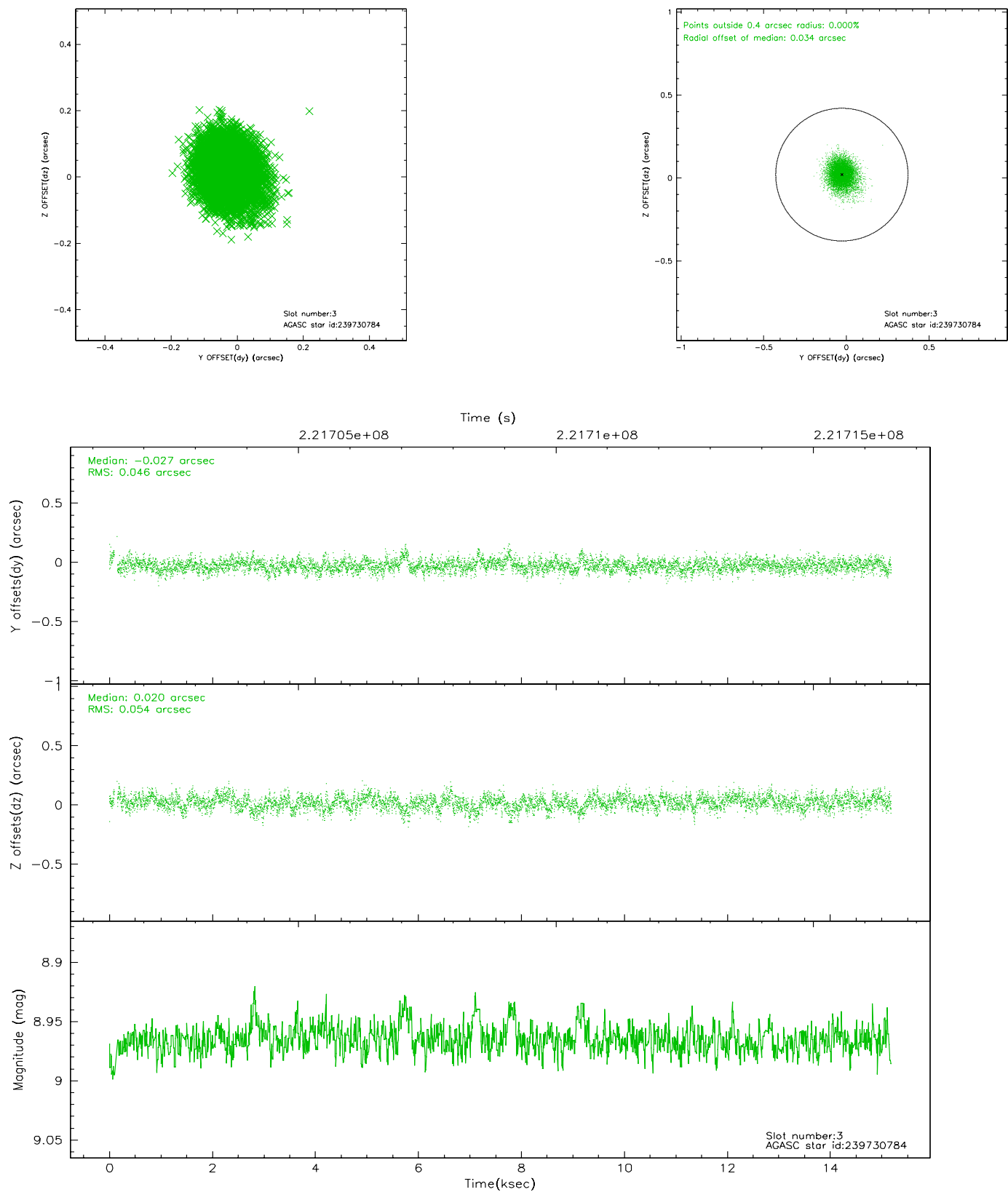


### Slot Statistics

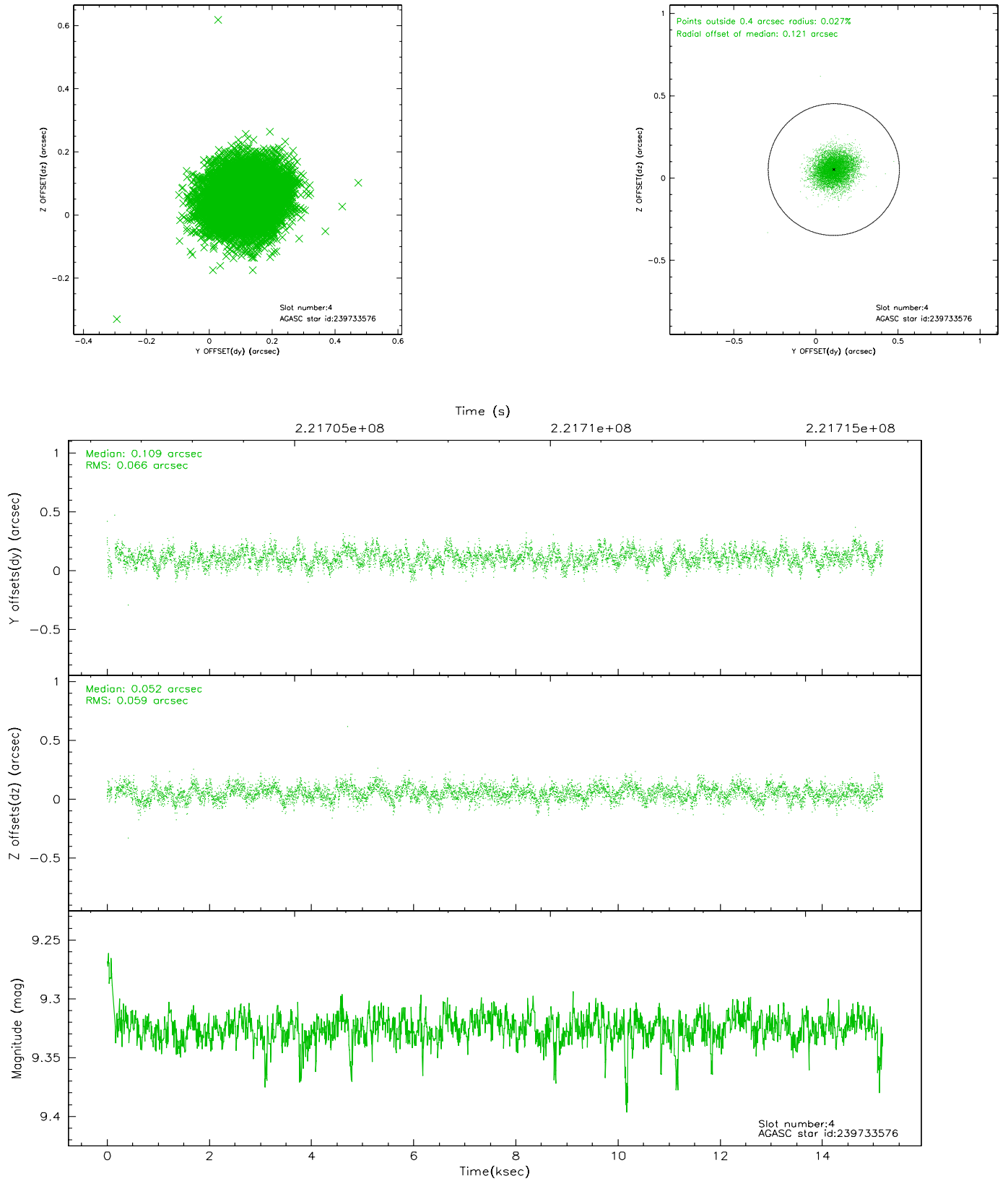
slot	status	id	mag	n_pts	med_dy	med_dz	dr1	dr2	ra	dec	mean_y	mean_z
0	FID	ACIS-S-2	7.10	3689	-0.041	0.006	0.009	0.014	0.000000	0.000000	-759.73	-1731.58
1	FID	ACIS-S-4	7.20	3688	0.041	0.018	0.010	0.016	0.000000	0.000000	2153.45	176.67
2	FID	ACIS-S-5	7.23	3690	-0.031	-0.015	0.013	0.020	0.000000	0.000000	-1812.23	170.56
3	GUIDE	239730784	8.97	7378	-0.027	0.020	0.074	0.123	68.709044	24.244524	536.27	1049.07
4	GUIDE	239733576	9.33	7372	0.109	0.052	0.095	0.151	68.994910	23.821766	2140.11	1841.78
5	GUIDE	240255024	9.20	7351	-0.023	-0.092	0.091	0.148	68.465897	24.501998	-462.33	344.37
6	GUIDE	240263016	8.65	7375	-0.062	0.024	0.066	0.108	68.575597	24.979042	-2137.85	866.72
7	MONITOR		0.00	0	0.000	0.000	0.000	0.000	0.000000	0.000000	0.00	0.00

## 2.4 Star Slots

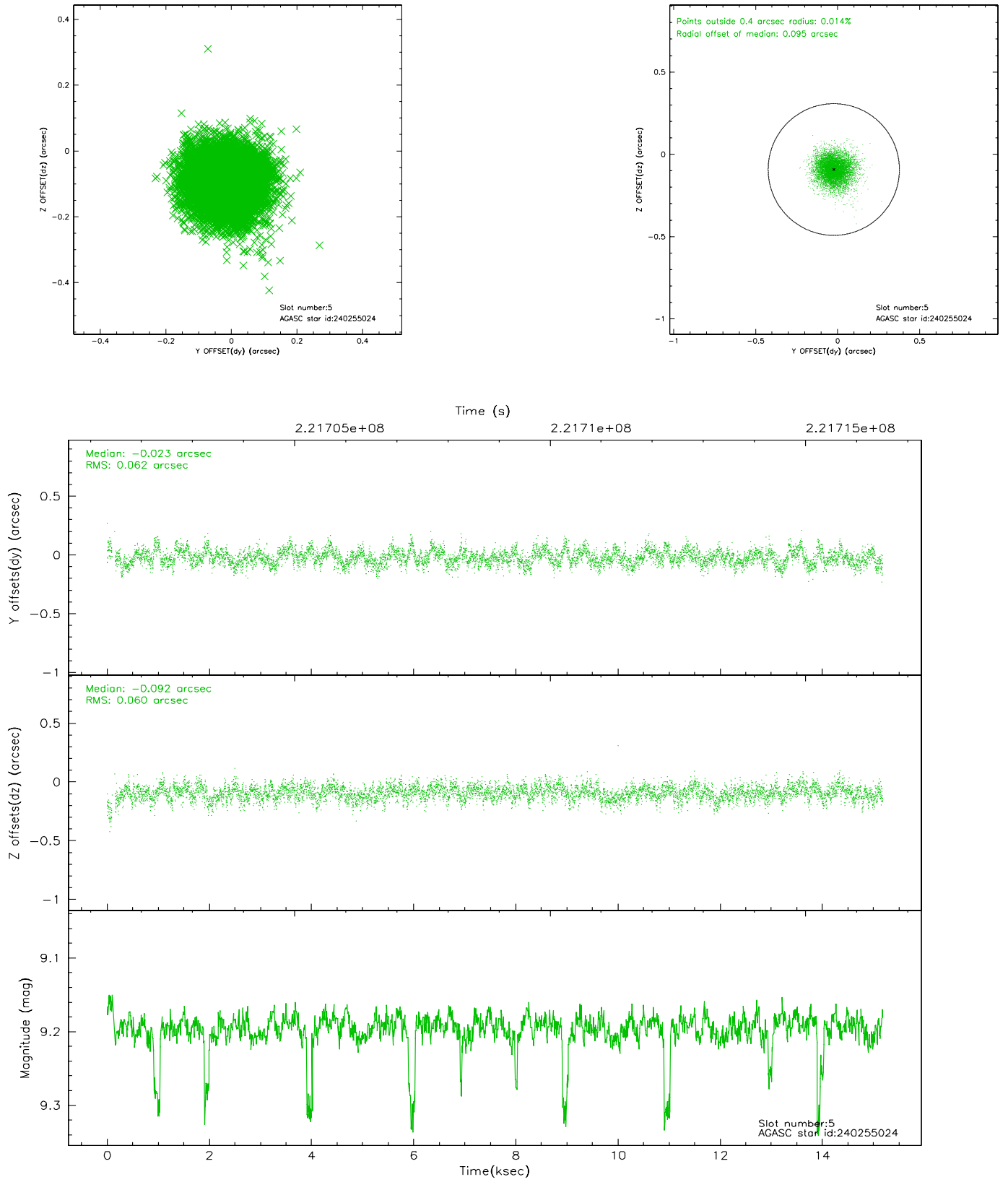
### 2.4.1 Slot 3



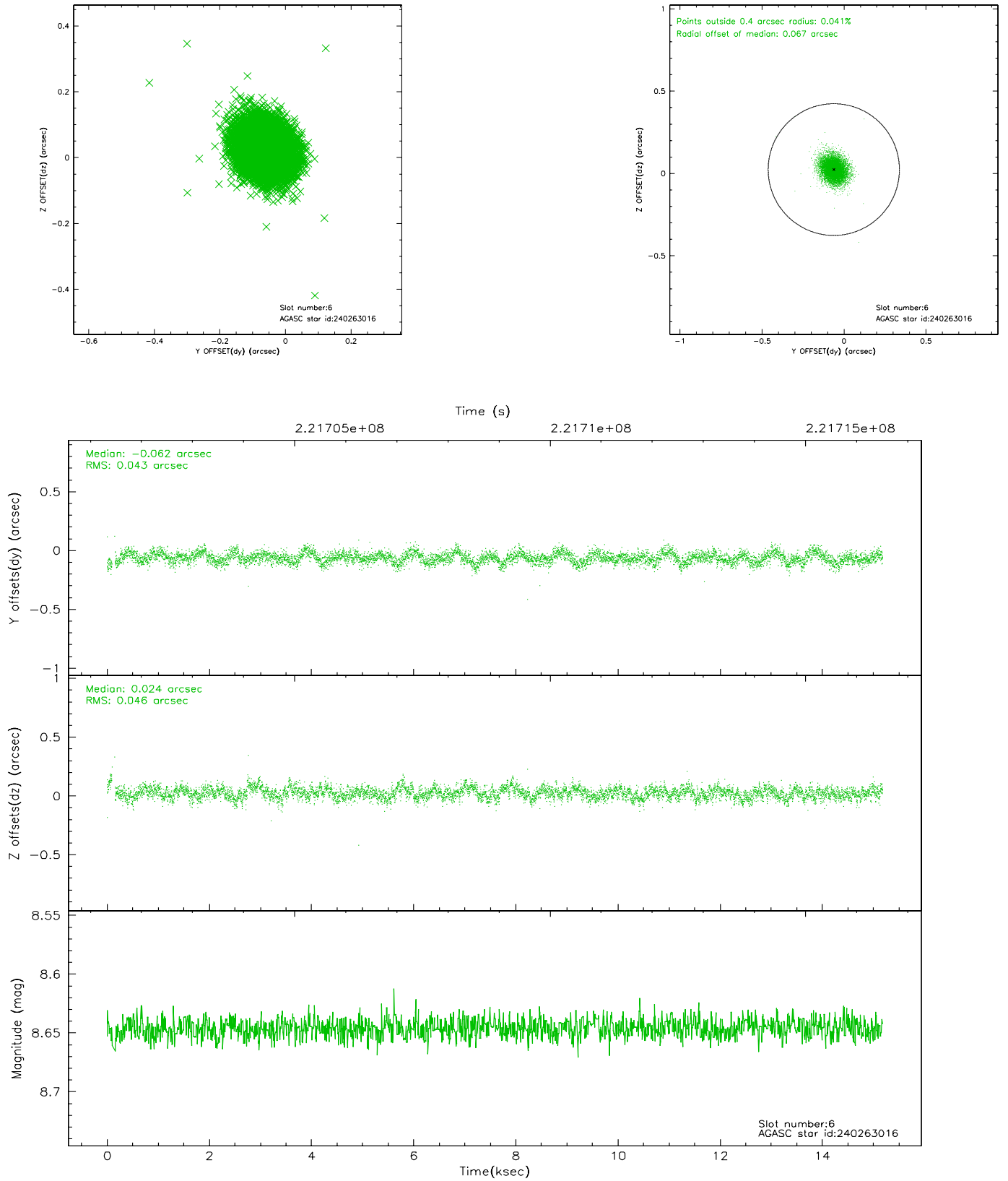
## 2.4.2 Slot 4



### 2.4.3 Slot 5

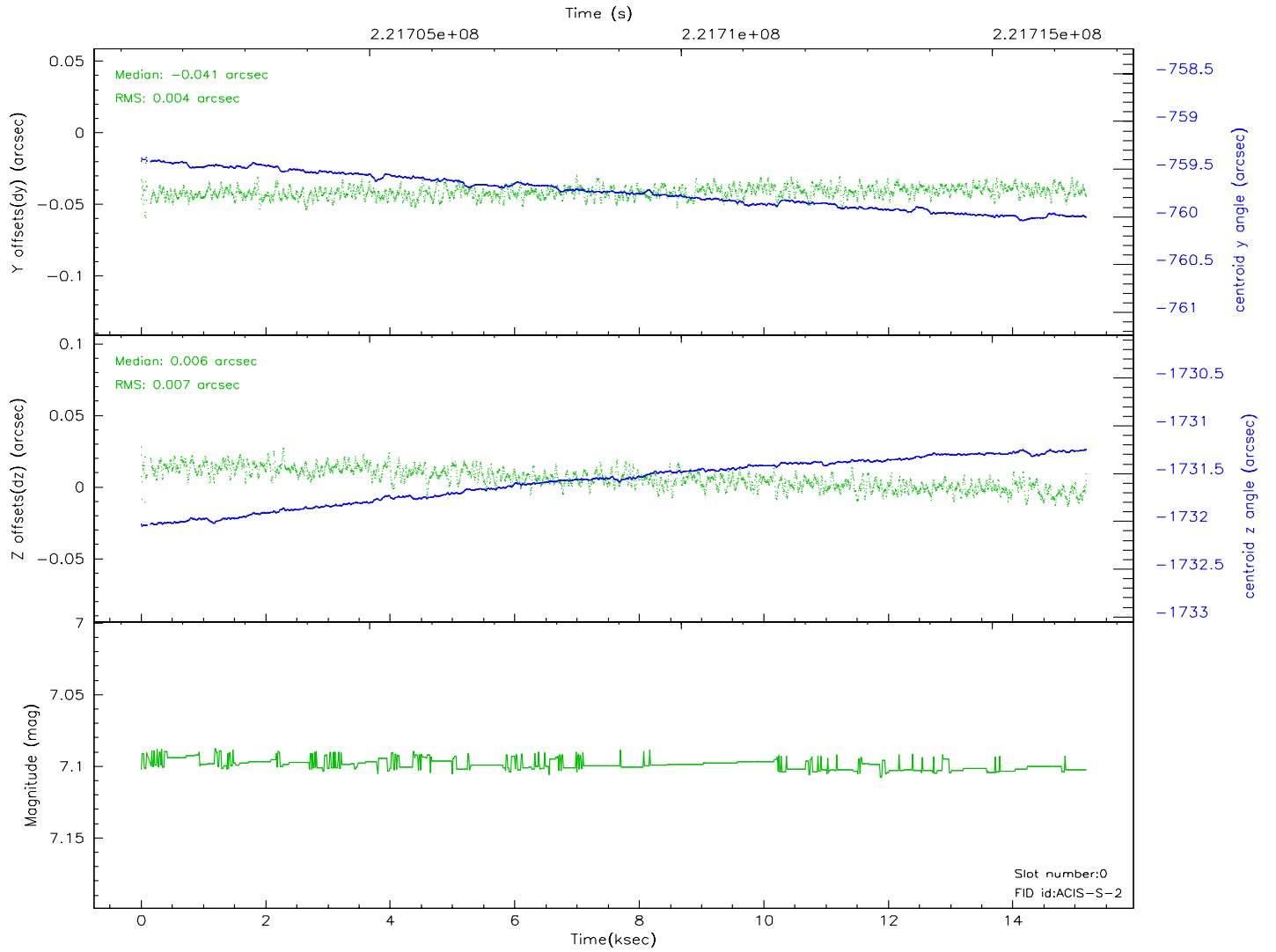
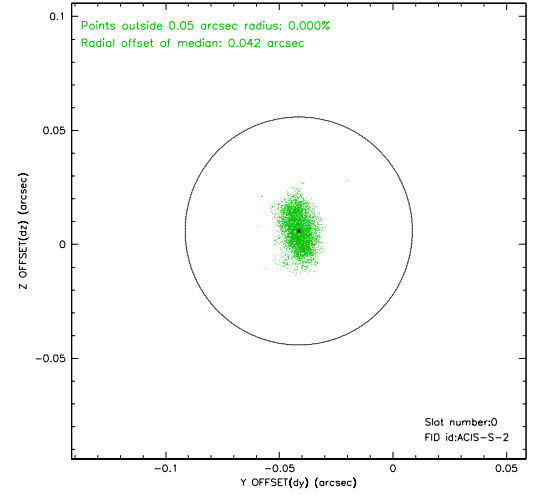
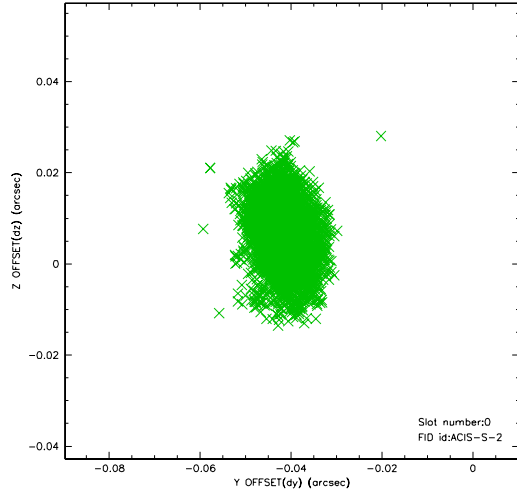


## 2.4.4 Slot 6

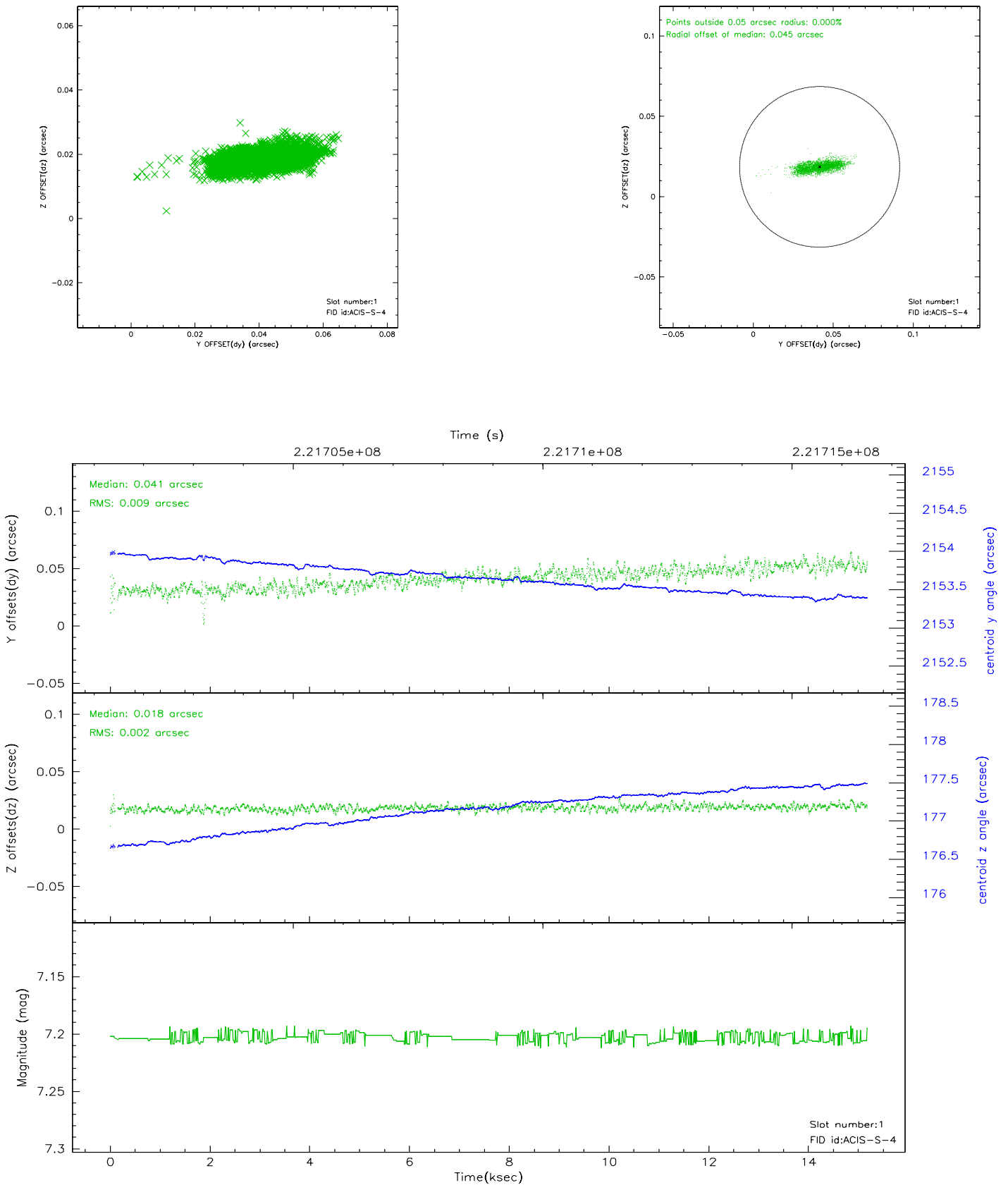


## 2.5 FID Slots

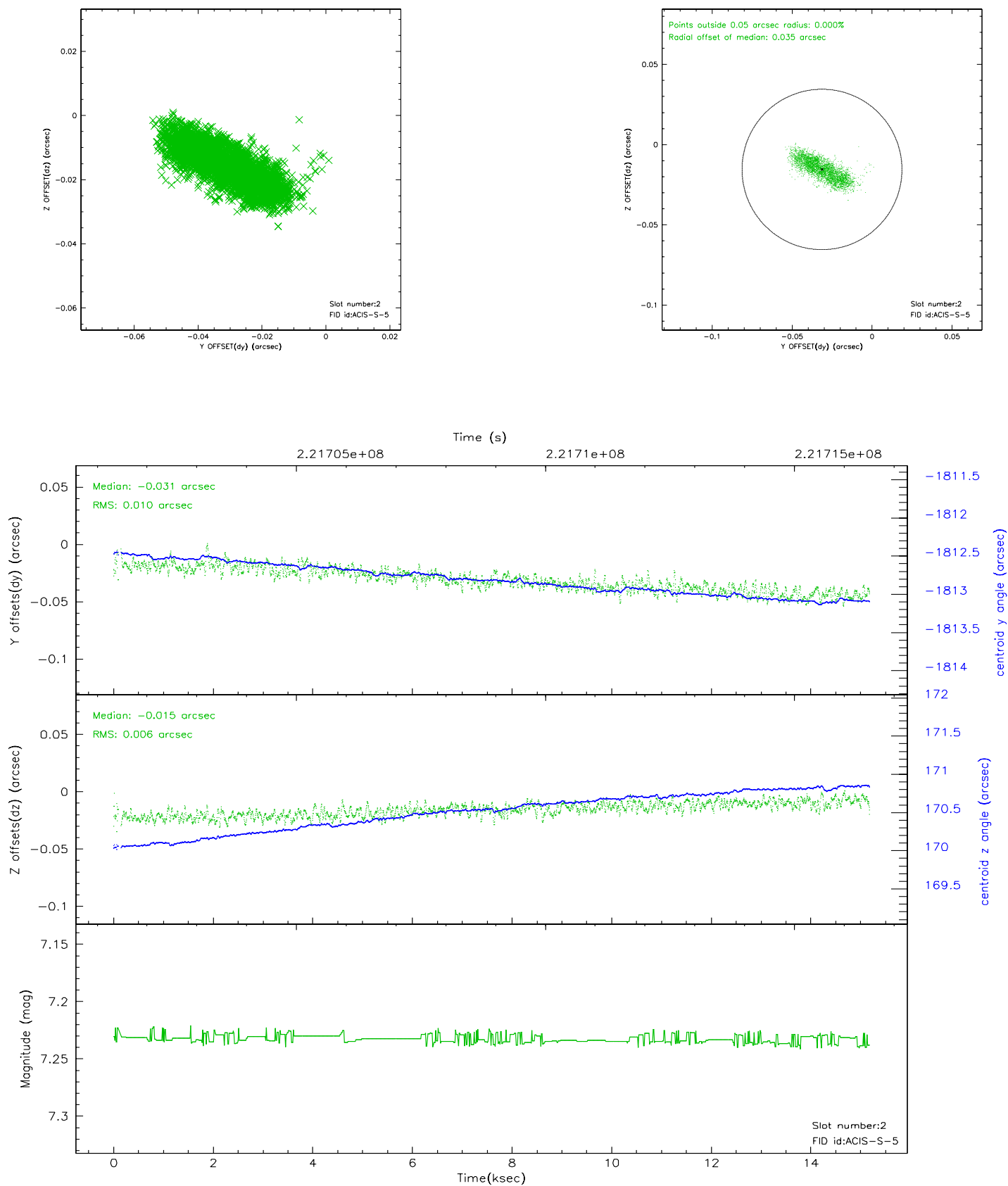
### 2.5.1 Slot 0



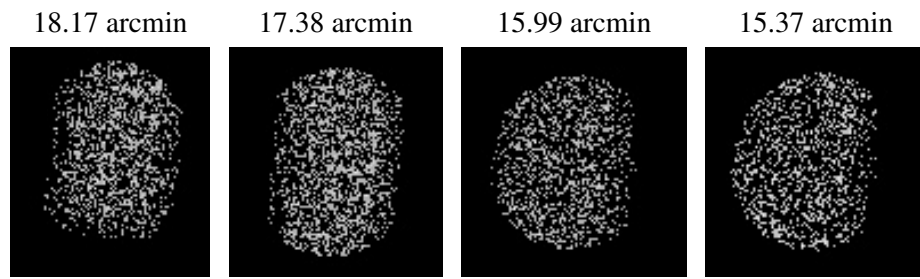
## 2.5.2 Slot 1



### 2.5.3 Slot 2



### 3 Point Sources



## A Summary

### A.1 Status

V&V Scientist	Beth Sundheim
V&V Date (YYYY-MM-DD)	2006.02.16
V&V Edition	1
V&V Disposition and Status	OK
V&V Charge Time	15.02991

### A.2 Comments

Charge time:

Using existing charge time of 15.02991.