

V&V Reference Report

L2 ASCDS Version : 8.4.5

Observation 5338 - L2 Version 3
Chandra X-Ray Center

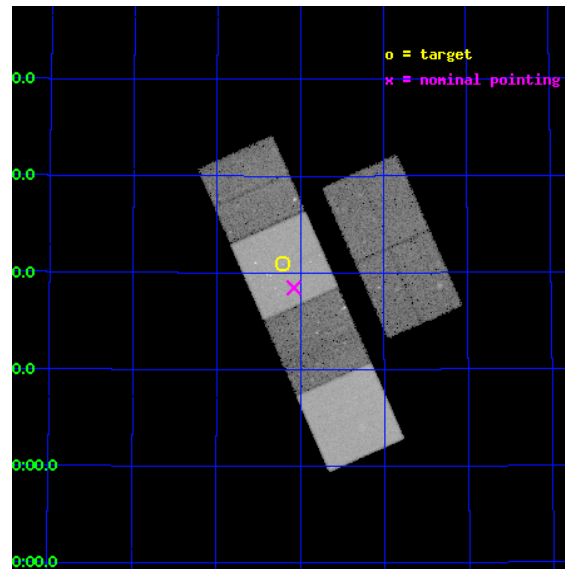
L2 Processing Date : Dec 3 2012

Contents

1	Front	2
2	OBI	3
2.1	OBI	3
2.1.1	Images	3
2.1.2	Bias	3
2.1.3	Parameters	4
2.1.4	Events	4
2.2	Compared Parameters	5
2.3	Aspect	6
2.4	Star Slots	9
2.4.1	Slot 3	9
2.4.2	Slot 4	10
2.4.3	Slot 5	11
2.4.4	Slot 6	12
2.4.5	Slot 7	13
2.5	FID Slots	14
2.5.1	Slot 0	14
2.5.2	Slot 1	15
2.5.3	Slot 2	16
A	Summary	17
A.1	Status	17
A.2	Comments	17

1 Front

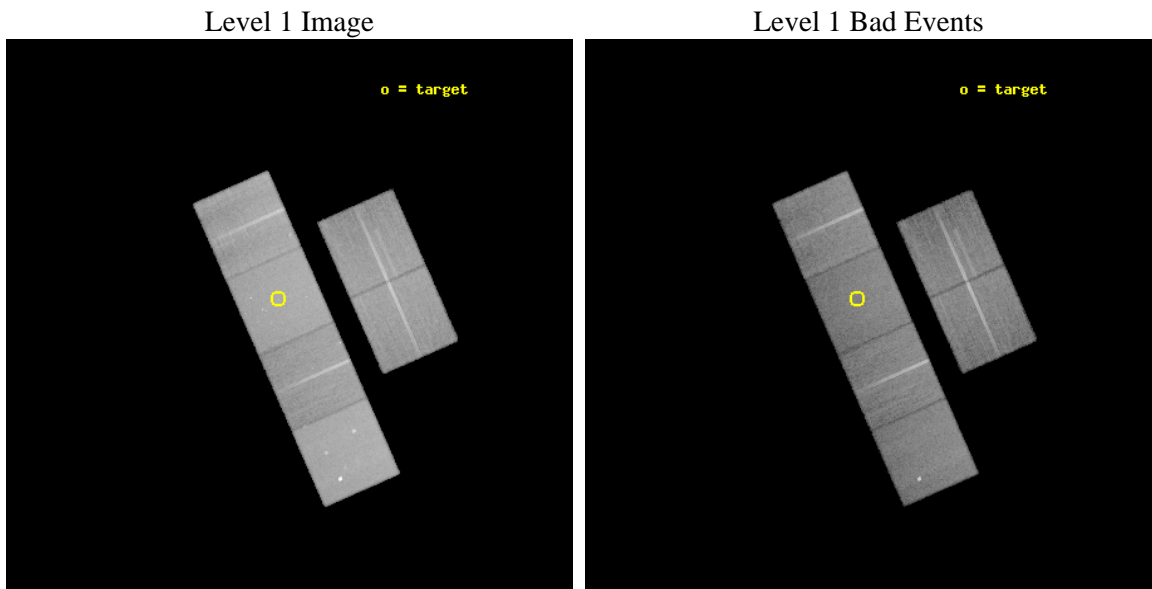
seq_num	600389	Sequence number
obs_id	5338	Observation id
title	An Ultra-Deep Study of M101	Proposal title
observer	Dr. K.D. Kuntz	Principal investigator
object	M101	Source name
dtcycle	0	
cycle	P	events from which exps? Prim/Second/Both
ra_targ	210.80375	Observer's specified target RA [deg]
dec_targ	54.348778	Observer's specified target Dec [deg]
ra_nom	210.76928204701	Nominal RA [deg]
dec_nom	54.307693631205	Nominal Dec [deg]
roll_nom	246.18463161345	Nominal Roll [deg]
revision	3	Processing version of data
ontime	28934.399892211	Sum of GTIs [s]
livetime	28568.015098572	Livetime [s]
ontime2	28931.158902019	Sum of GTIs [s]
ontime3	28934.399892211	Sum of GTIs [s]
ontime5	28934.399892211	Sum of GTIs [s]
ontime6	28934.399892211	Sum of GTIs [s]
ontime7	28934.399892211	Sum of GTIs [s]
ontime8	28931.158892006	Sum of GTIs [s]
l2events	355297	Number of level 2 events



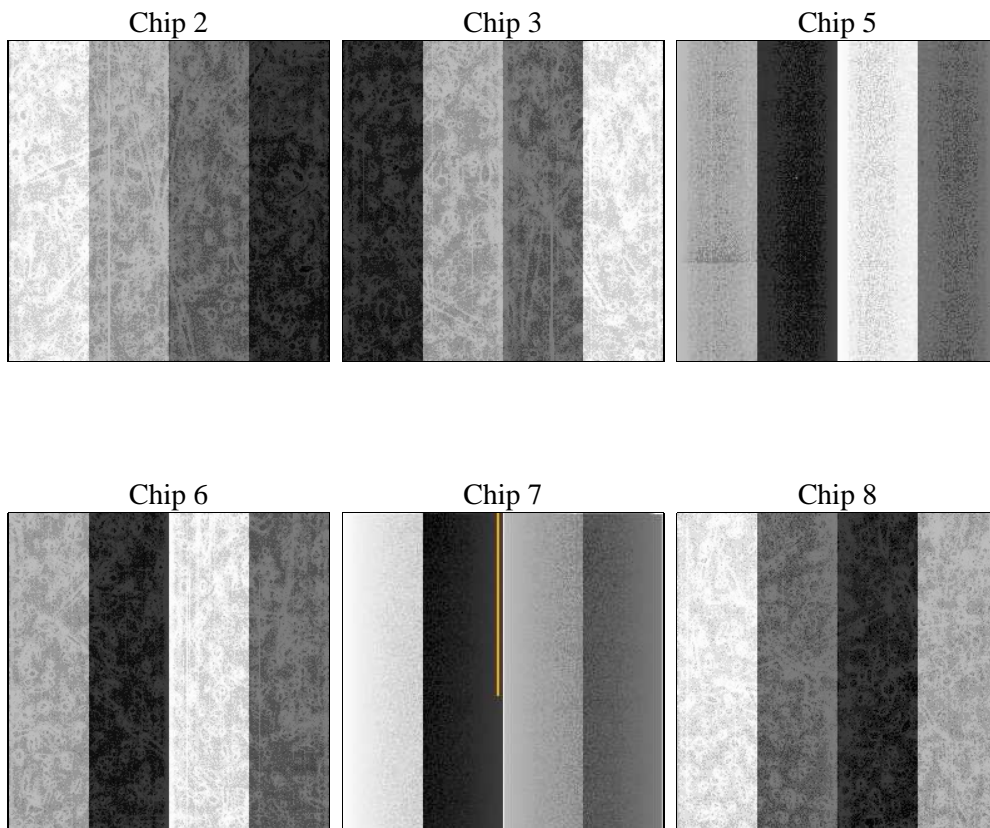
2 OBI

2.1 OBI

2.1.1 Images



2.1.2 Bias



2.1.3 Parameters

obi_num	0	Obi number	sched_exp_time	28760.000000	[s] Scheduled observation exposure time
ascdsver	8.4.5	Processing system revision	ontime	28934.399892211	Sum of GTIs [s]
caldsver	4.5.2	 	ontime2	28931.158902019	Sum of GTIs [s]
date	2012-12-03T19:55:53	Date and time of file creation	ontime3	28934.399892211	Sum of GTIs [s]
revision	3	Processing version of data	ontime5	28934.399892211	Sum of GTIs [s]
			ontime6	28934.399892211	Sum of GTIs [s]
			ontime7	28934.399892211	Sum of GTIs [s]
			ontime8	28931.158892006	Sum of GTIs [s]
			l1events	1561663	Number of level 1 events

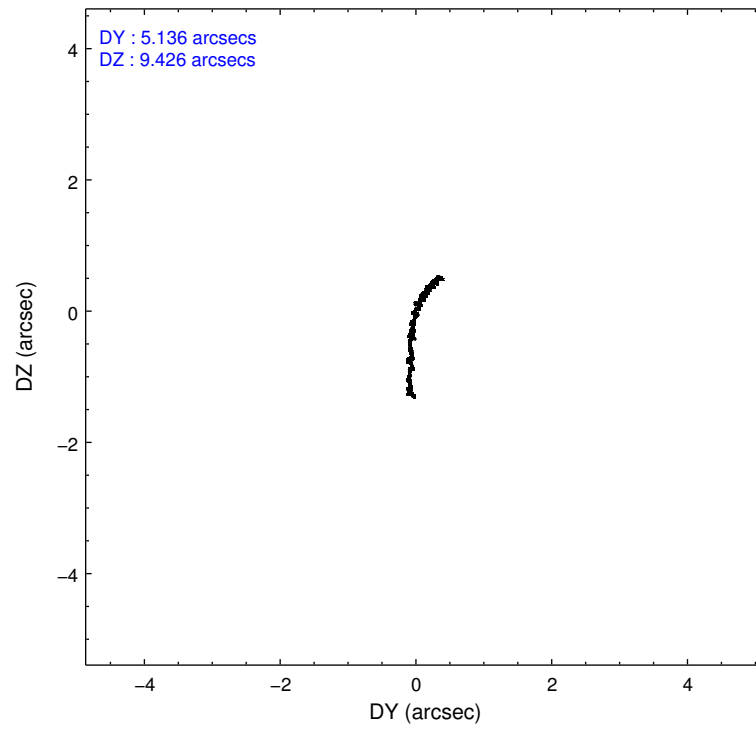
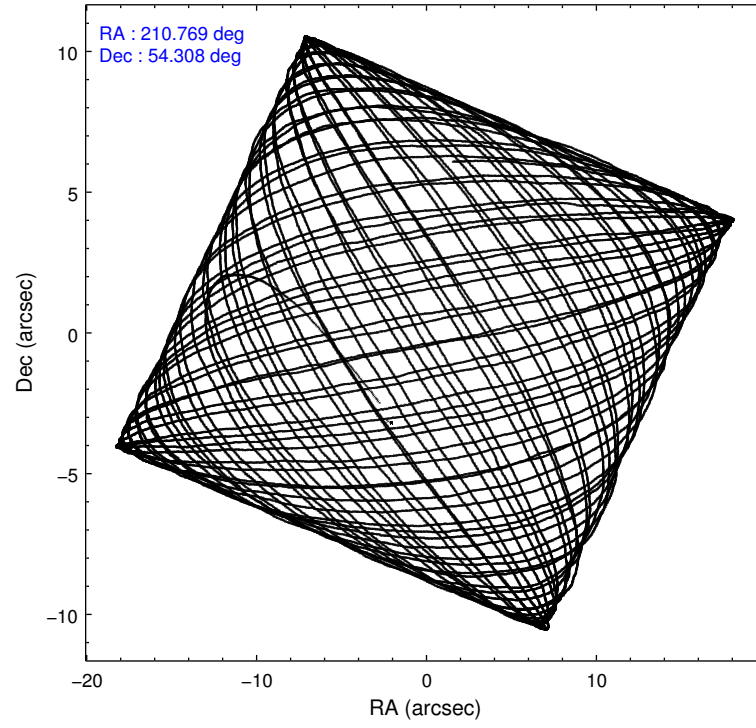
2.1.4 Events

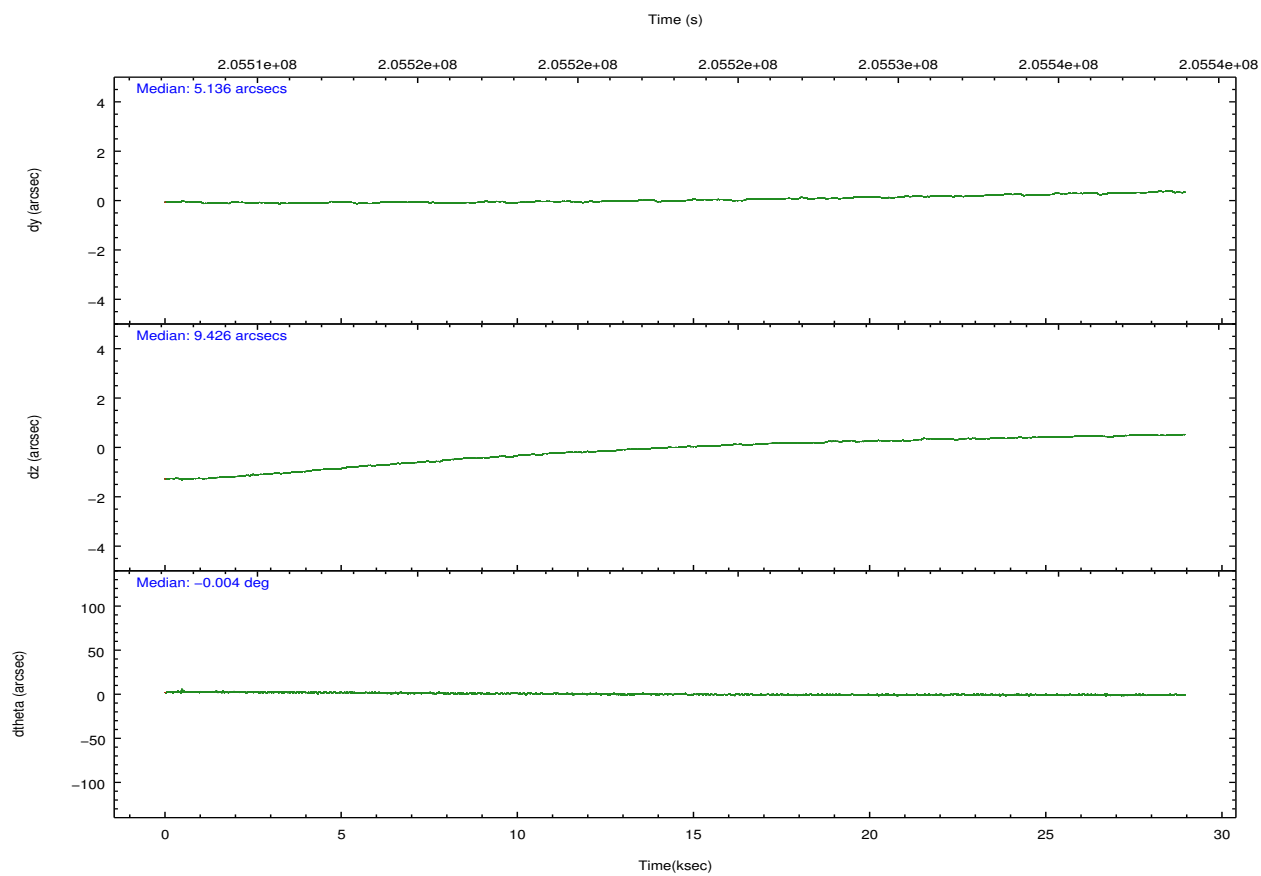
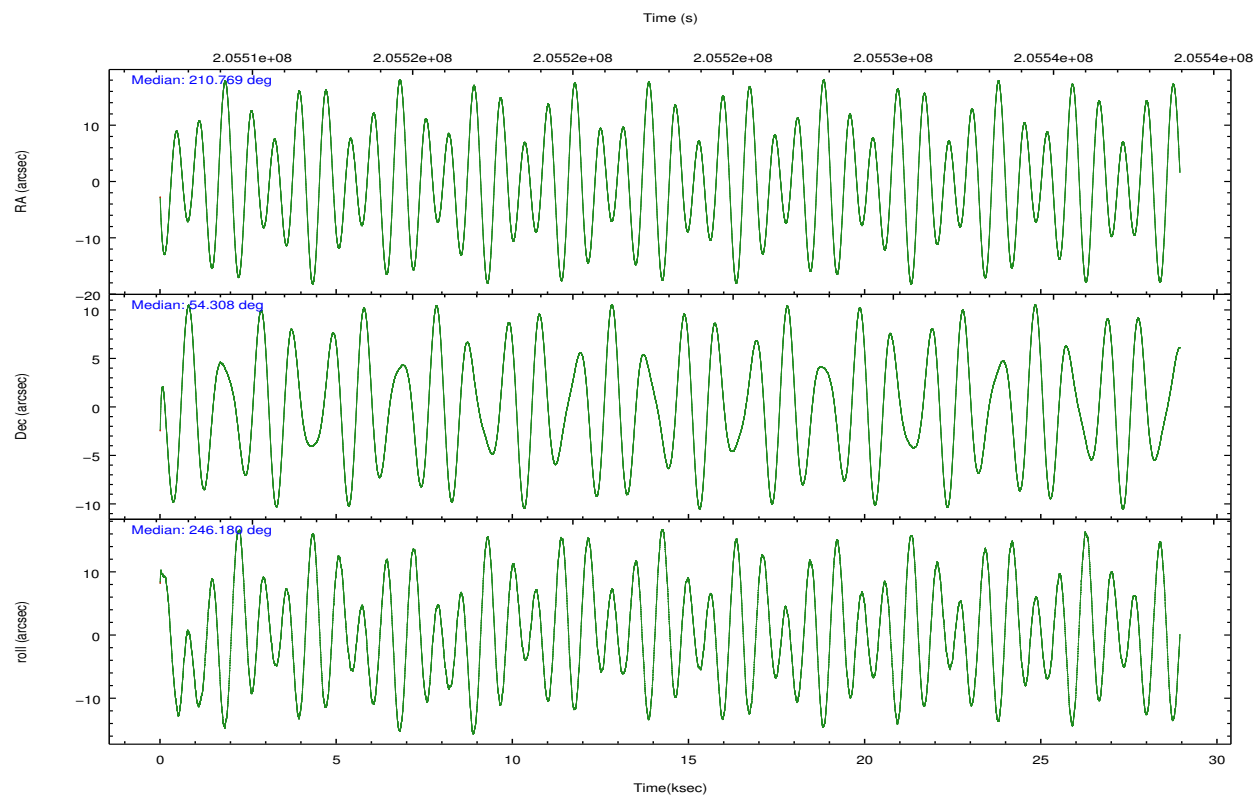
	ccd 2	ccd 3	ccd 5	ccd 6	ccd 7	ccd 8		ccd 2	ccd 3	ccd 5	ccd 6	ccd 7	ccd 8
level 1 events	224130	211800	329707	221874	298616	275536	grade 0 events	11871	10945	15568	10885	13039	18500
rejected events	197788	186924	179040	195432	172286	216033		5%	5%	4%	4%	4%	6%
rejected %	88%	88%	54%	88%	57%	78%	grade 1 events	138	134	2637	96	285	196
								0%	0%	0%	0%	0%	0%
							grade 2 events	5368	4770	45793	5398	24835	13148
								2%	2%	13%	2%	8%	4%
							grade 3 events	2527	2451	5786	2556	11099	6197
								1%	1%	1%	1%	3%	2%
							grade 4 events	2387	2416	5464	2403	11276	5876
								1%	1%	1%	1%	3%	2%
							grade 5 events	8727	9544	23600	10142	28065	13036
								3%	4%	7%	4%	9%	4%
							grade 6 events	4198	4306	78099	5207	66109	15792
								1%	2%	23%	2%	22%	5%
							grade 7 events	188914	177234	152760	185187	143908	202791
								84%	83%	46%	83%	48%	73%

2.2 Compared Parameters

Parameter	Planned	Actual	Parameter	Planned	Actual
Instrument	ACIS	ACIS	Obspar format version number	7	7
Detector	ACIS-235678	ACIS-235678	Obspar file type	PREDICTED	ACTUAL
Grating	NONE	NONE	Obspar update status	NONE	UPDATED
Data mode	VFAINT	VFAINT	Number of optional ACIS chips dropped	0	0
Observation mode	POINTING	POINTING	On-chip summing requested	N	N
[deg] Pointing RA	210.763621	210.7692820470089	Subarray requested	NONE	NONE
[deg] Pointing Dec	54.334730	54.30769363120514	Alternating exposures requested	N	N
[deg] Pointing Roll	246.032598	246.1846316134465	[s] Primary exposure time	0.000000	3.2
[mm] SIM focus pos	-0.684267	-0.6828225247311905			
[mm] SIM defocus	0	0.001444936568705701			
[mm] SIM translation stage pos	-190.132523	-190.1425803651734			
[mm] SIM translation stage offset	0	0.01005778216563158			
[s] Observation start time (MET)	205508748.184000	205507676.52274			
Observation start date	2004-07-06T13:44:44	2004-07-06T13:27:56			
[s] Observation end time (MET)	205537508.184000	205538339.3991			
Observation end date	2004-07-06T21:44:04	2004-07-06T21:58:59			
Read mode	TIMED	TIMED			

2.3 Aspect



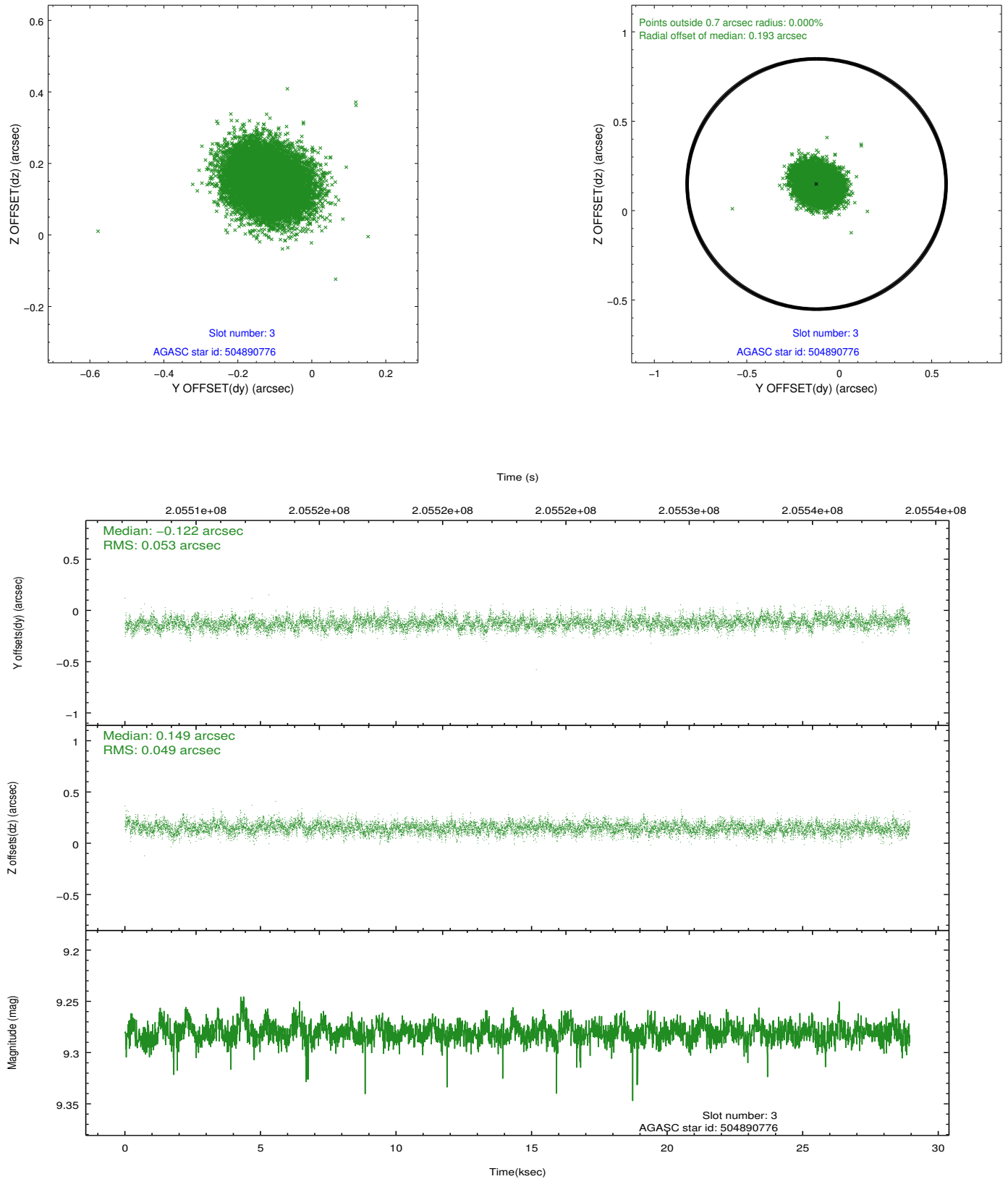


Slot Statistics

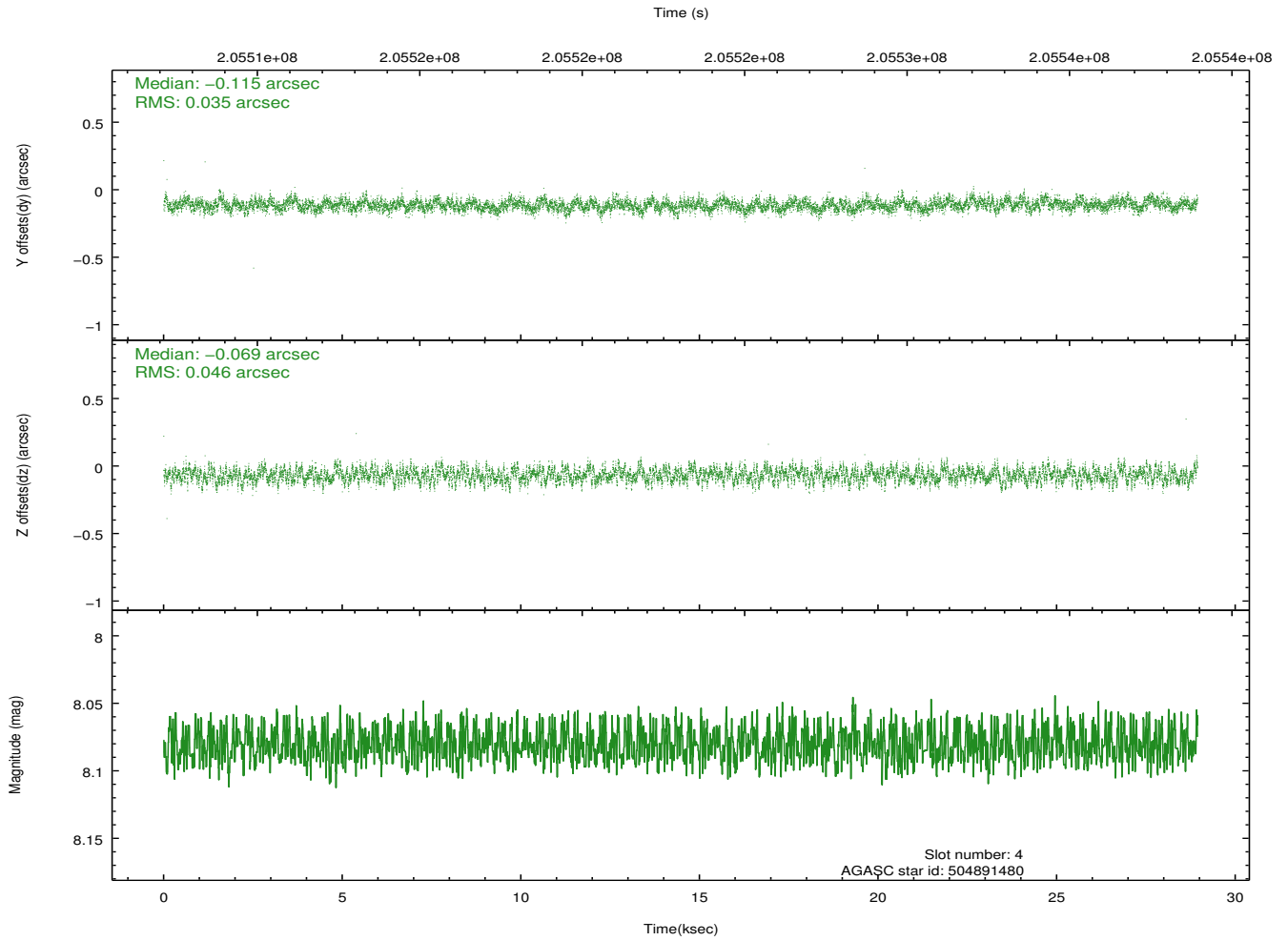
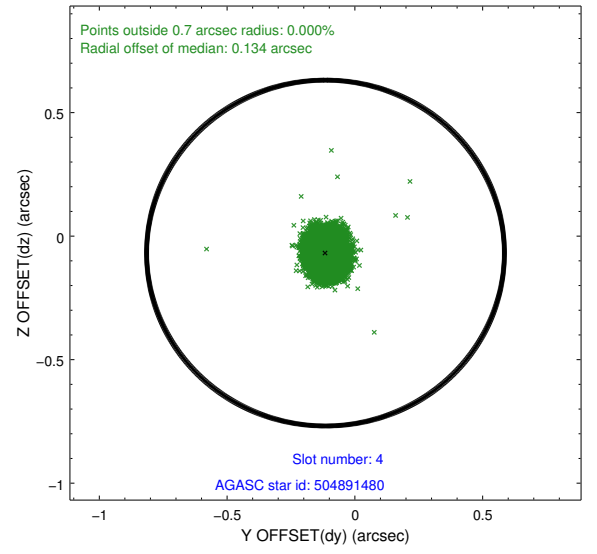
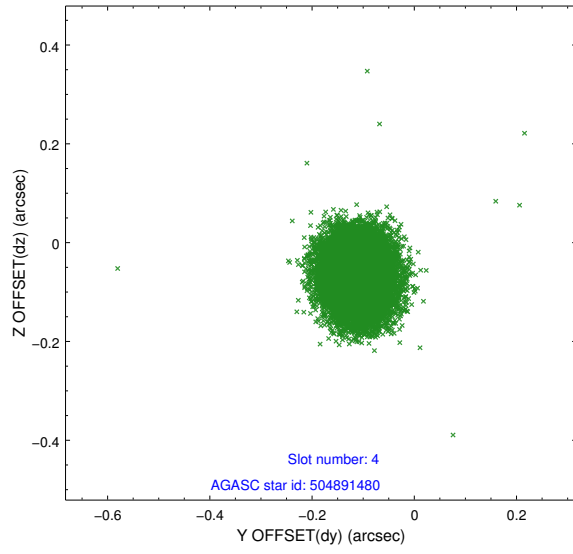
slot	status	id	mag	n_pts	med_dy	med_dz	dr1	dr2	ra	dec	mean_y	mean_z
0	FID	ACIS-S-2	7.10	7058	-0.093	-0.063	0.014	0.021	0.000000	0.000000	-758.00	-1730.49
1	FID	ACIS-S-4	7.20	7060	0.063	0.057	0.010	0.017	0.000000	0.000000	2155.41	178.01
2	FID	ACIS-S-6	7.35	7060	0.002	0.015	0.010	0.016	0.000000	0.000000	404.20	815.46
3	GUIDE	504890776	9.28	14110	-0.122	0.149	0.076	0.126	211.095934	54.816966	-1867.53	-75.83
4	GUIDE	504891480	8.08	14112	-0.115	-0.069	0.062	0.098	210.708012	54.666096	-1042.83	-590.40
5	GUIDE	504893088	9.21	14115	0.054	-0.063	0.077	0.124	210.351715	54.364955	249.76	-834.60
6	GUIDE	504894856	8.98	14053	0.115	-0.101	0.080	0.129	209.819510	54.132689	1462.08	-1529.45
7	GUIDE	504890480	8.18	14114	0.068	0.082	0.070	0.110	210.132463	53.768436	2404.16	-401.37

2.4 Star Slots

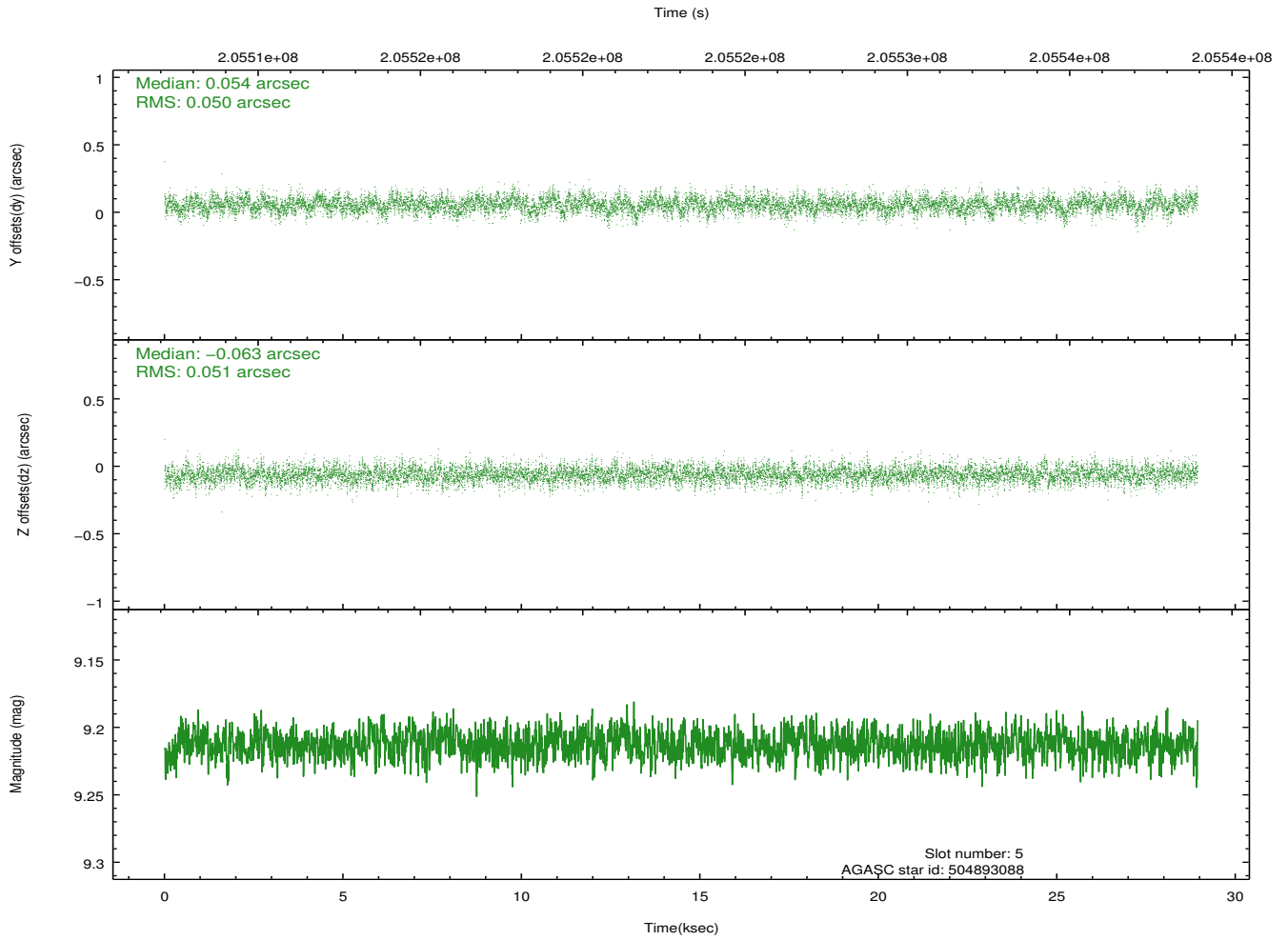
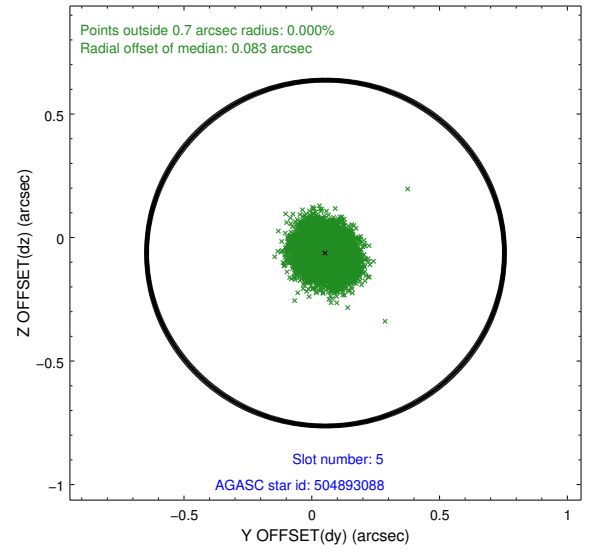
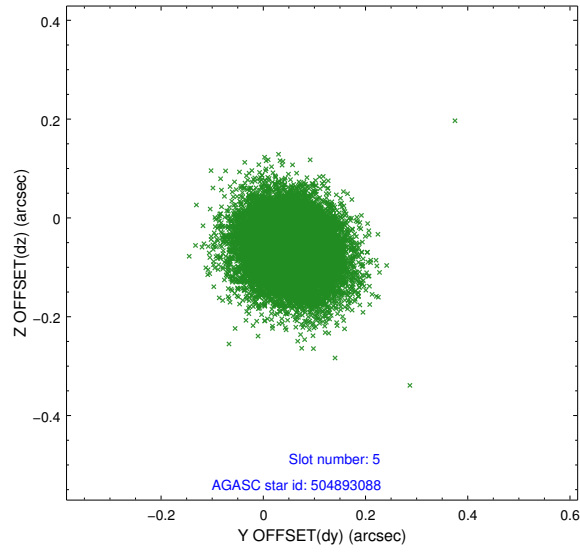
2.4.1 Slot 3



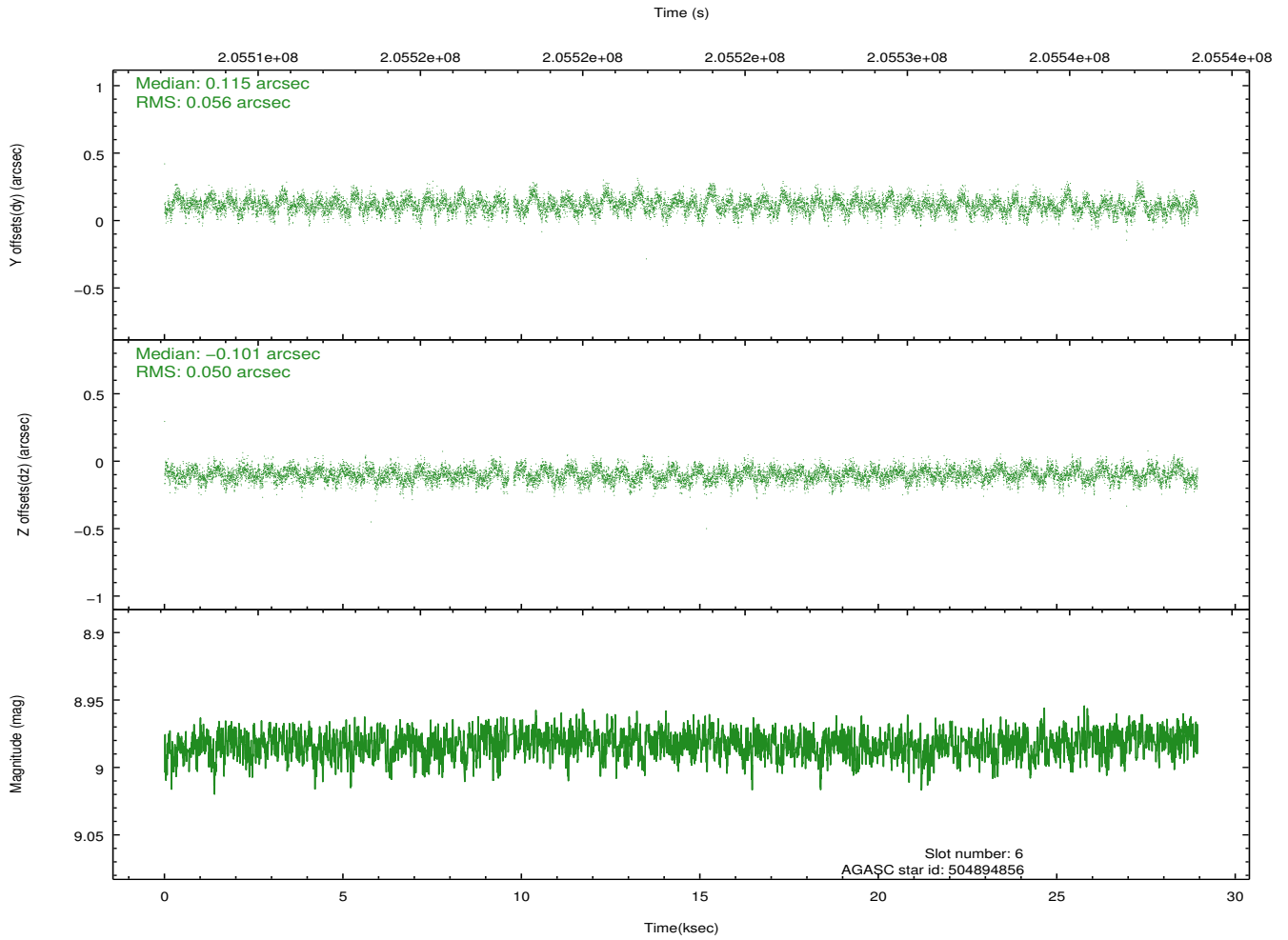
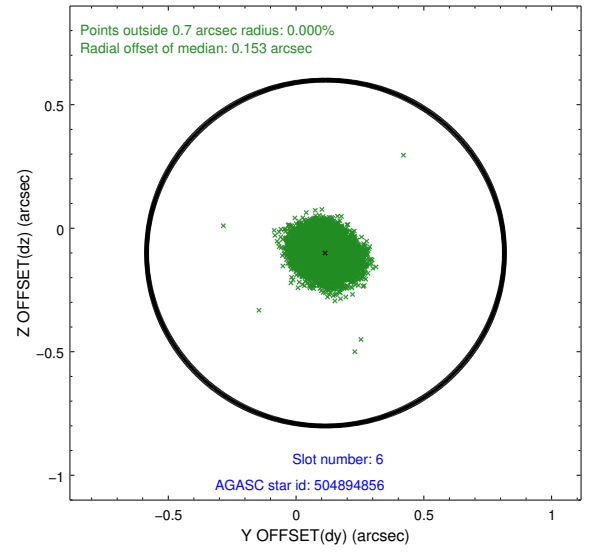
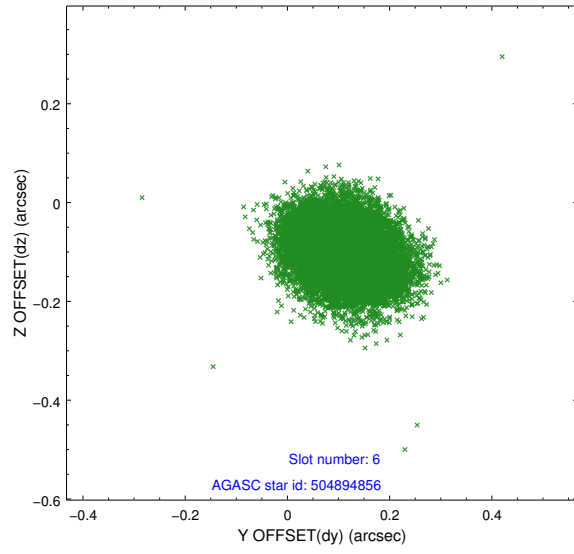
2.4.2 Slot 4



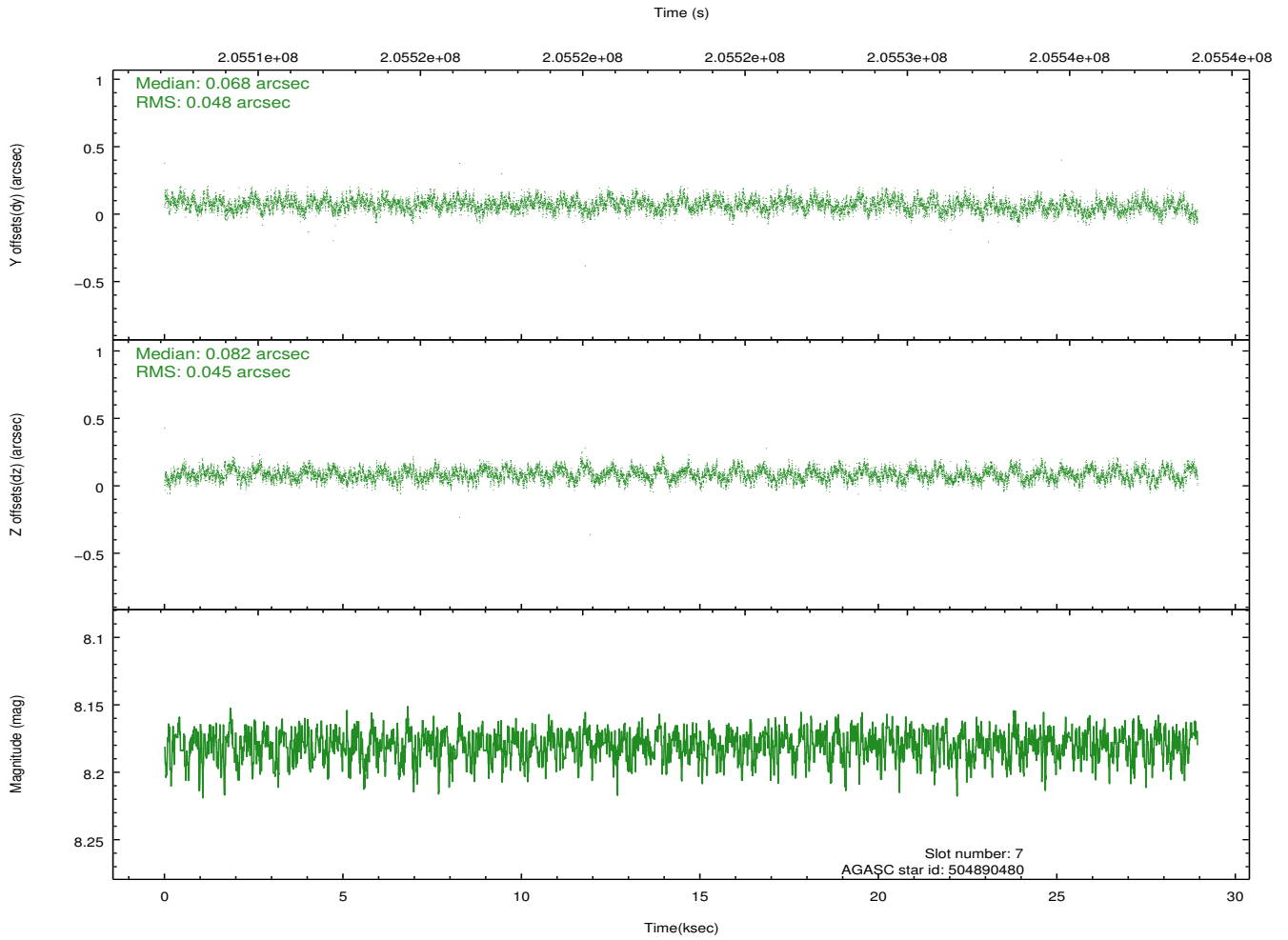
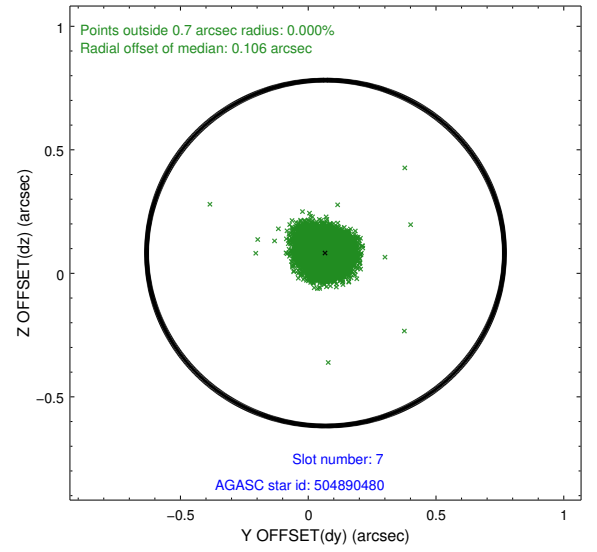
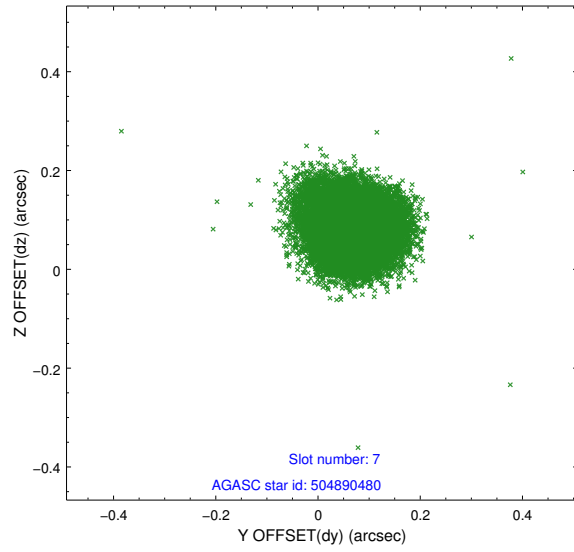
2.4.3 Slot 5



2.4.4 Slot 6

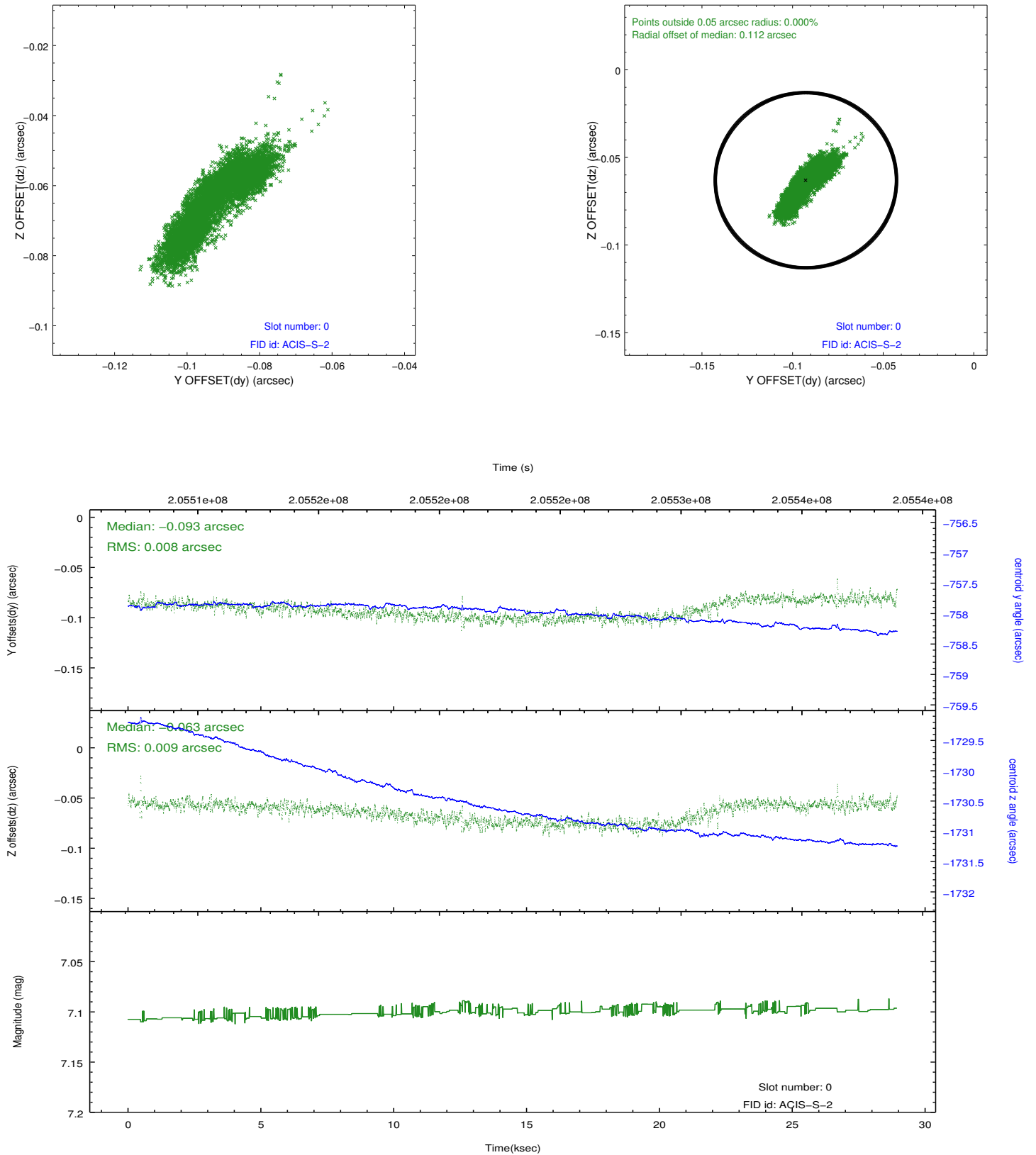


2.4.5 Slot 7

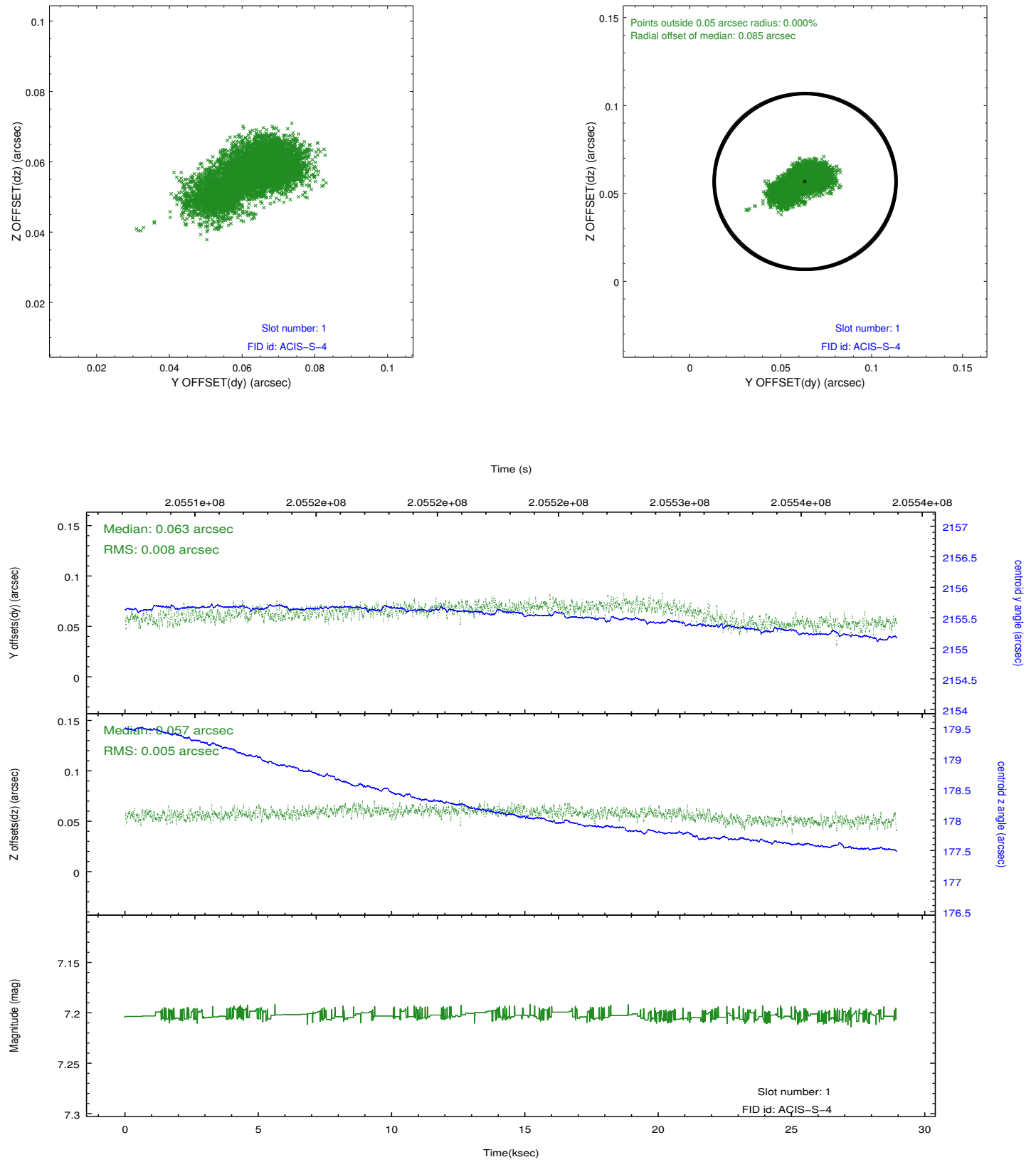


2.5 FID Slots

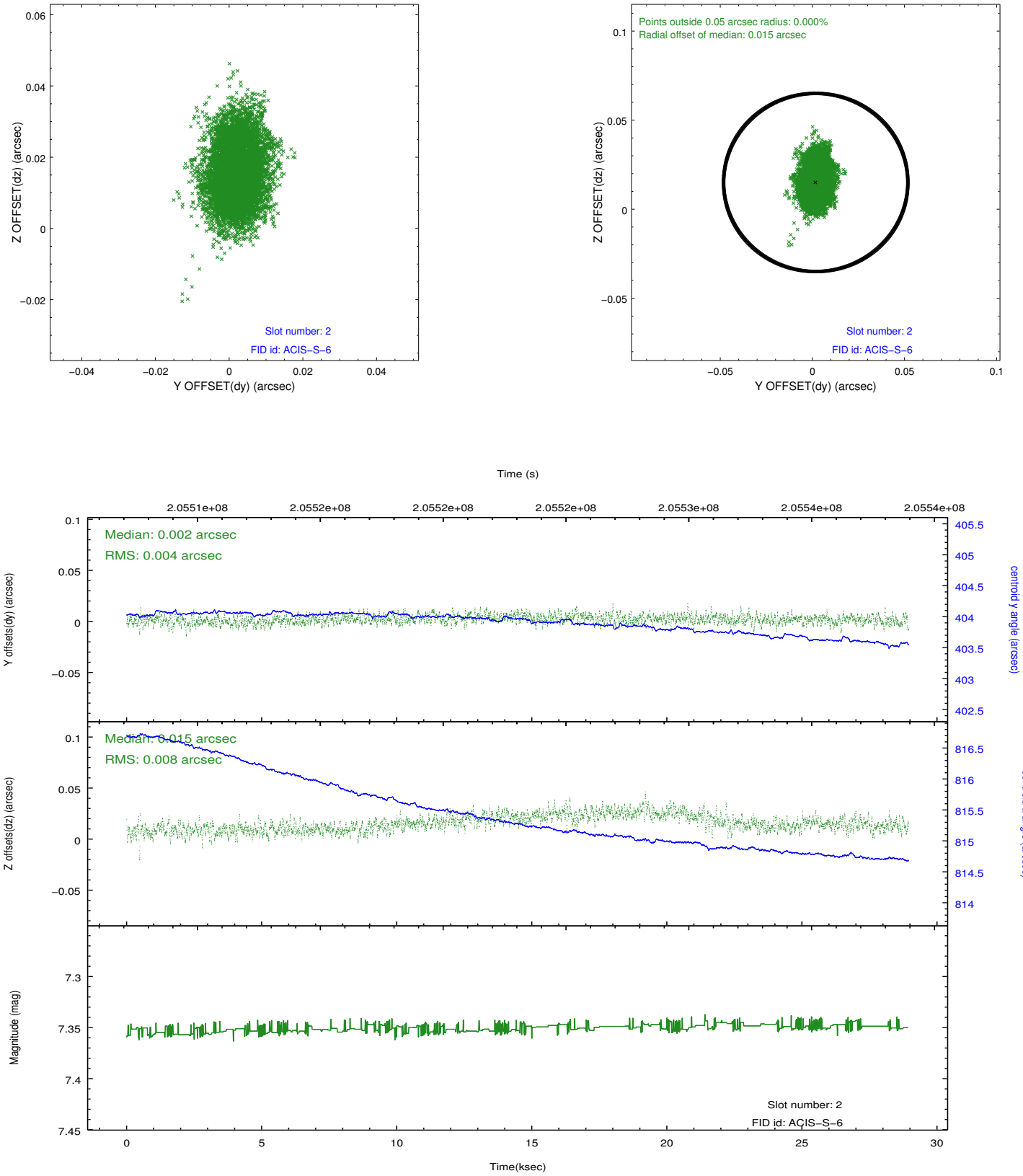
2.5.1 Slot 0



2.5.2 Slot 1



2.5.3 Slot 2



A Summary

A.1 Status

V&V Scientist	Jen Lauer
V&V Date (YYYY-MM-DD)	2012.12.20
V&V Edition	1
V&V Disposition and Status	OK
V&V Charge Time	28.934

A.2 Comments

Monitor constraint met.