

V&V Reference Report

L2 ASCDS Version : 10.2.4

Observation 52508 - L2 Version 1
Chandra X-Ray Center

L2 Processing Date : Aug 30 2014

Contents

1	Front	2
2	OBI	3
2.1	OBI	3
2.1.1	Images	3
2.1.2	Bias	3
2.1.3	Parameters	4
2.1.4	Events	4
2.2	Compared Parameters	5
2.3	Star Slots	6
2.4	FID Slots	6
A	Summary	7
A.1	Status	7
A.2	Comments	7

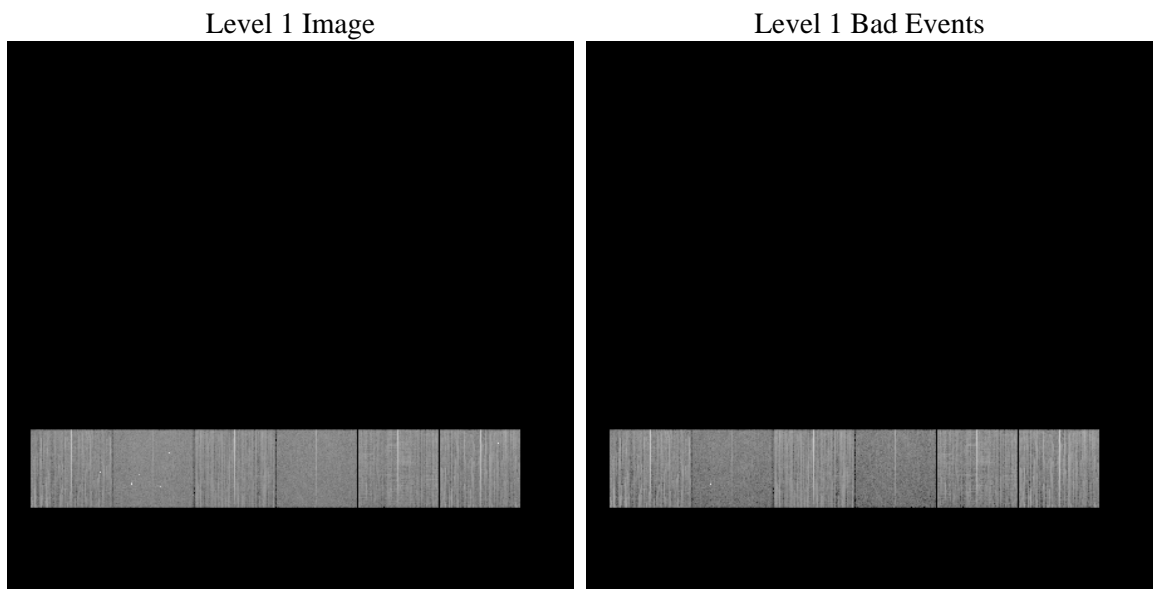
1 Front

seq_num	 	Sequence number
obs_id	52508	Observation id
title	ACIS-456789 diagnostics	Proposal title
observer	CHANDRA engineering request/realtime commanding	Principal investig
object	 	Source name
dtcycle	0	
cycle	P	events from which exps? Prim/Second/Both
ra_targ	0.0	Observer's specified target RA [deg]
dec_targ	0.0	Observer's specified target Dec [deg]
ra_nom	320.12922662622	Nominal RA [deg]
dec_nom	-26.512310133458	Nominal Dec [deg]
roll_nom	302.08033084689	Nominal Roll [deg]
revision	1	Processing version of data
ontime	8457.0172053576	Sum of GTIs [s]
livetime	8349.9293612989	Livetime [s]
ontime4	8456.8940853477	Sum of GTIs [s]
ontime5	8456.9761653543	Sum of GTIs [s]
ontime6	8456.935125351	Sum of GTIs [s]
ontime7	8457.0172053576	Sum of GTIs [s]
ontime8	8456.8530453444	Sum of GTIs [s]
ontime9	8457.0582453609	Sum of GTIs [s]
l2events	207824	Number of level 2 events

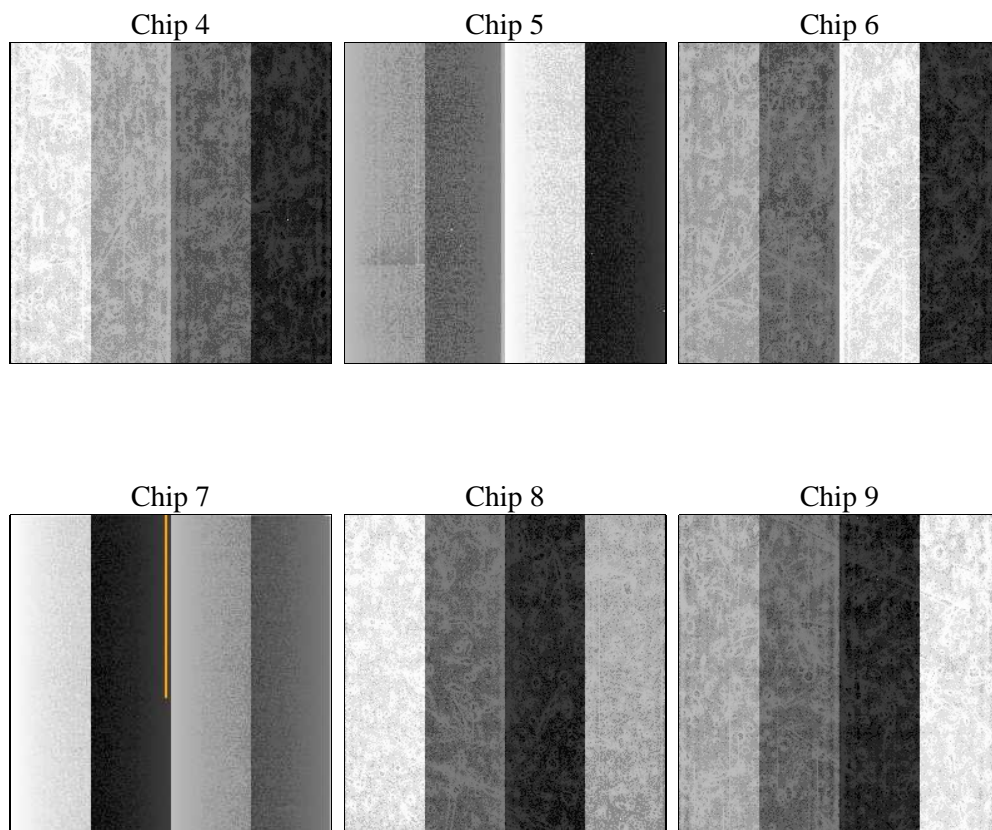
2 OBI

2.1 OBI

2.1.1 Images



2.1.2 Bias



2.1.3 Parameters

obi_num	0	Obi number	sched_exp_time	0.0	[s] Scheduled observation exposure time
ascdsver	10.2.4	Processing system revision	ontime	8457.0172053576	Sum of GTIs [s]
caldsver	4.6.2	 	ontime4	8456.8940853477	Sum of GTIs [s]
date	2014-08-30T14:41:58	Date and time of file creation	ontime5	8456.9761653543	Sum of GTIs [s]
revision	1	Processing version of data	ontime6	8456.935125351	Sum of GTIs [s]
			ontime7	8457.0172053576	Sum of GTIs [s]
			ontime8	8456.8530453444	Sum of GTIs [s]
			ontime9	8457.0582453609	Sum of GTIs [s]
			l1events	913452	Number of level 1 events

2.1.4 Events

	ccd 4	ccd 5	ccd 6	ccd 7	ccd 8	ccd 9		ccd 4	ccd 5	ccd 6	ccd 7	ccd 8	ccd 9
level 1 events	158938	139523	162424	126007	159575	166985	grade 0 events	15612	7164	13280	7046	15845	15287
rejected events	130635	79342	135212	71684	122997	137983		9%	5%	8%	5%	9%	9%
rejected %	82%	56%	83%	56%	77%	82%	grade 1 events	125	135	48	91	95	101
								0%	0%	0%	0%	0%	0%
							grade 2 events	5110	21536	5568	13412	7714	5373
								3%	15%	3%	10%	4%	3%
							grade 3 events	2003	1952	1794	4368	2940	1944
								1%	1%	1%	3%	1%	1%
							grade 4 events	1876	1927	1820	4353	2838	1904
								1%	1%	1%	3%	1%	1%
							grade 5 events	3220	6629	3374	7846	4299	3684
								2%	4%	2%	6%	2%	2%
							grade 6 events	3717	27618	4764	25158	7268	4510
								2%	19%	2%	19%	4%	2%
							grade 7 events	127275	72562	131776	63733	118576	134182
								80%	52%	81%	50%	74%	80%

2.2 Compared Parameters

Parameter	Planned	Actual	Parameter	Planned	Actual
Instrument	ACIS	ACIS	Obspar format version number	7	7
Detector	ACIS-456789	ACIS-456789	Obspar file type	PREDICTED	ACTUAL
Grating	NONE	NONE	Obspar update status	NONE	UPDATED
Data mode	FAINT	FAINT	Number of optional ACIS chips dropped	0	0
Observation mode	SECONDARY	SECONDARY	On-chip summing requested	N	N
[deg] Pointing RA	0	320.1292266262225	Subarray requested	NONE	NONE
[deg] Pointing Dec	0	-26.51231013345775	Alternating exposures requested	N	N
[deg] Pointing Roll	0.0	302.0803308468939	[s] Primary exposure time	3.2	3.2
[mm] SIM focus pos	-1.429586	-1.428180813131781			
[mm] SIM defocus	0.1037507710433287	0.1051558262725154			
[mm] SIM translation stage pos	250.455976	250.466033080201			
[mm] SIM translation stage offset	0	-0.01005468664627074			
[s] Observation start time (MET)	525748560.143765	525748559.11877			
Observation start date	2014-08-30T01:16:00	2014-08-30T01:15:59			
[s] Observation end time (MET)	525761729.344495	525761728.3195			
Observation end date	2014-08-30T04:55:29	2014-08-30T04:55:28			
Read mode	TIMED	TIMED			

2.3 Star Slots

2.4 FID Slots

A Summary

A.1 Status

V&V Scientist	Beth Sundheim
V&V Date (YYYY-MM-DD)	2014.08.30
V&V Edition	1
V&V Disposition and Status	OK
V&V Charge Time	8.4570172053576

A.2 Comments