

V&V Reference Report

L2 ASCDS Version : 8.4.5

Observation 4958 - L2 Version 3
Chandra X-Ray Center

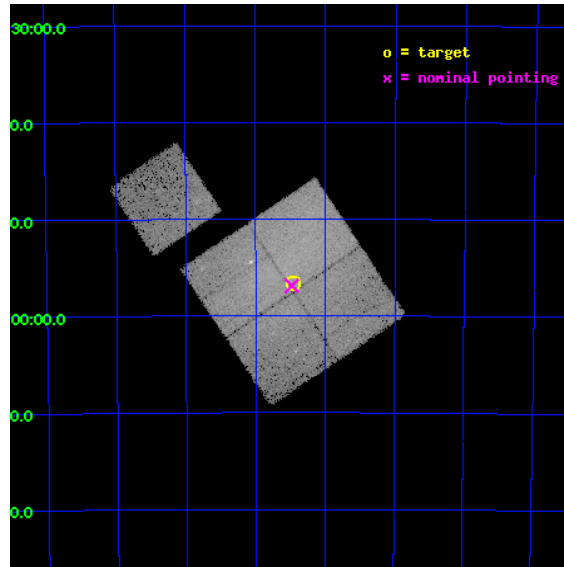
L2 Processing Date : Dec 2 2012

Contents

1	Front	2
2	OBI	3
2.1	OBI	3
2.1.1	Images	3
2.1.2	Bias	3
2.1.3	Parameters	4
2.1.4	Events	4
2.2	Compared Parameters	5
2.3	Aspect	6
2.4	Star Slots	9
2.4.1	Slot 3	9
2.4.2	Slot 4	10
2.4.3	Slot 5	11
2.4.4	Slot 6	12
2.4.5	Slot 7	13
2.5	FID Slots	14
2.5.1	Slot 0	14
2.5.2	Slot 1	15
2.5.3	Slot 2	16
A	Summary	17
A.1	Status	17
A.2	Comments	17

1 Front

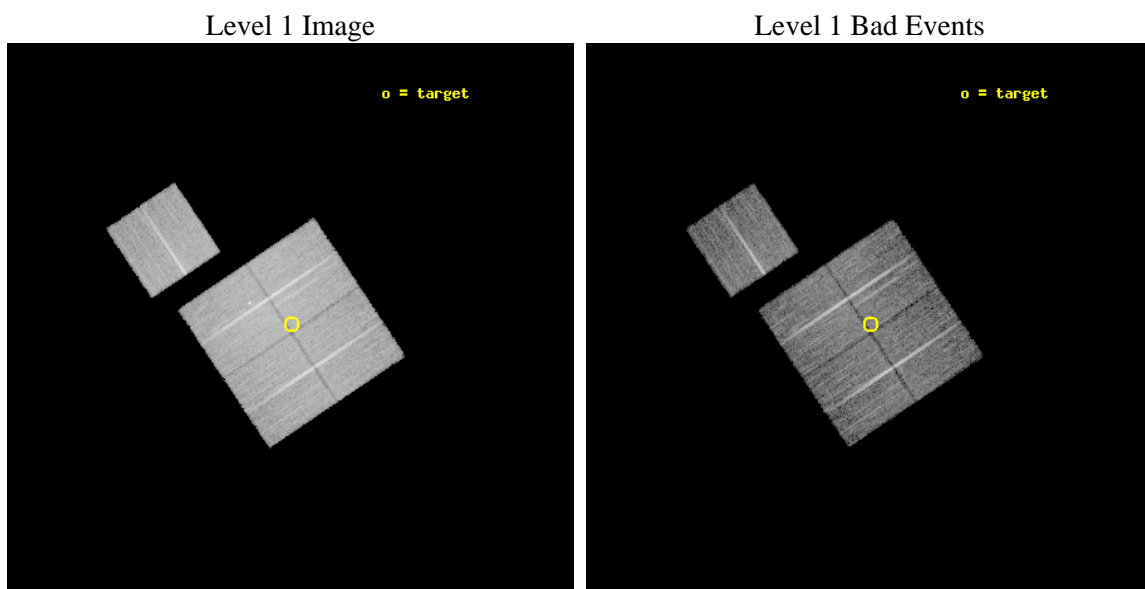
seq_num	800404	Sequence number
obs_id	4958	Observation id
title	The Cluster A3627 -- The Nearest Major Merger	Proposal title
observer	Dr. Christine Jones	Principal investigator
object	Abell 3627	Source name
dtcycle	0	
cycle	P	events from which exps? Prim/Second/Both
ra_targ	243.61437	Observer's specified target RA [deg]
dec_targ	-60.944506	Observer's specified target Dec [deg]
ra_nom	243.61963399828	Nominal RA [deg]
dec_nom	-60.948359863922	Nominal Dec [deg]
roll_nom	326.21328778047	Nominal Roll [deg]
revision	3	Processing version of data
ontime	14302.902789503	Sum of GTIs [s]
livetime	14116.024834915	Livetime [s]
ontime0	14302.779669493	Sum of GTIs [s]
ontime1	14302.820709497	Sum of GTIs [s]
ontime2	14302.8617495	Sum of GTIs [s]
ontime3	14302.902789503	Sum of GTIs [s]
ontime6	14302.738609582	Sum of GTIs [s]
l2events	131470	Number of level 2 events



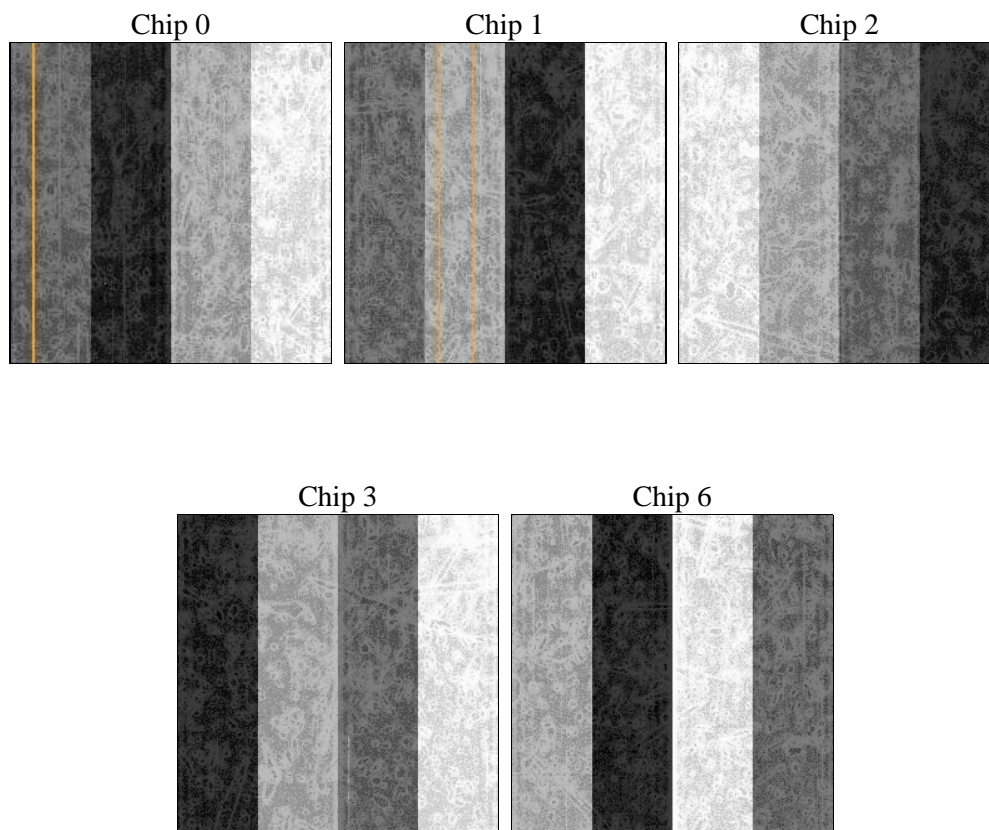
2 OBI

2.1 OBI

2.1.1 Images



2.1.2 Bias



2.1.3 Parameters

obi_num	0	Obi number	sched_exp_time	14526.000000	[s] Scheduled observation exposure time
ascdsver	8.4.5	Processing system revision	ontime	14302.902789503	Sum of GTIs [s]
caldsver	4.5.2	 	ontime0	14302.779669493	Sum of GTIs [s]
date	2012-12-03T01:20:34	Date and time of file creation	ontime1	14302.820709497	Sum of GTIs [s]
revision	3	Processing version of data	ontime2	14302.8617495	Sum of GTIs [s]
			ontime3	14302.902789503	Sum of GTIs [s]
			ontime6	14302.738609582	Sum of GTIs [s]
			l1events	547236	Number of level 1 events

2.1.4 Events

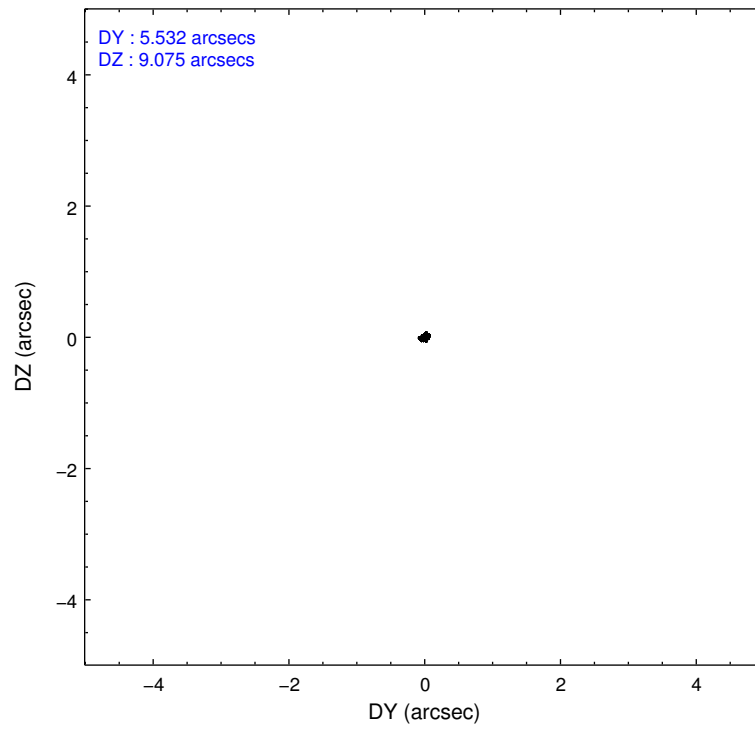
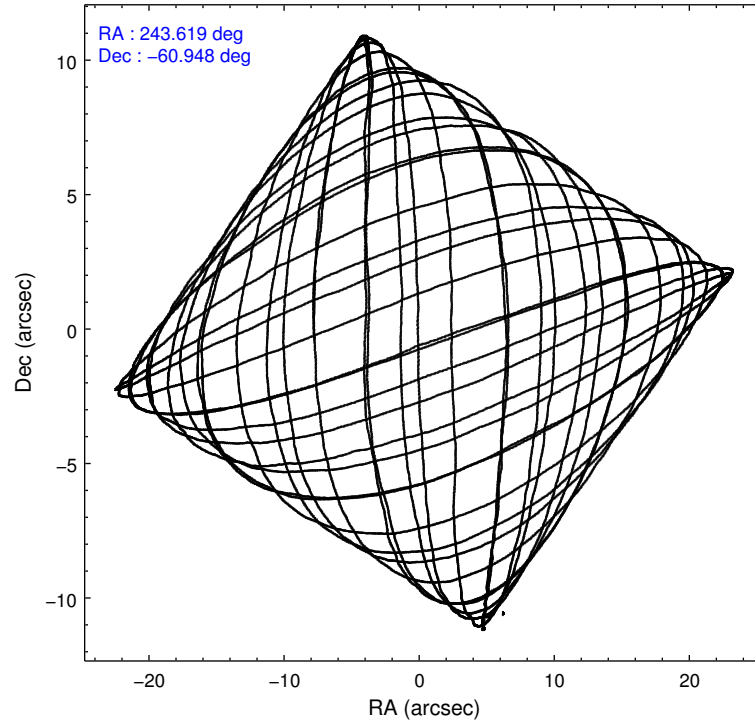
	ccd 0	ccd 1	ccd 2	ccd 3	ccd 6
level 1 events	101559	100000	123505	125839	96333
rejected events	77786	73336	87672	83412	80499
rejected %	76%	73%	70%	66%	83%

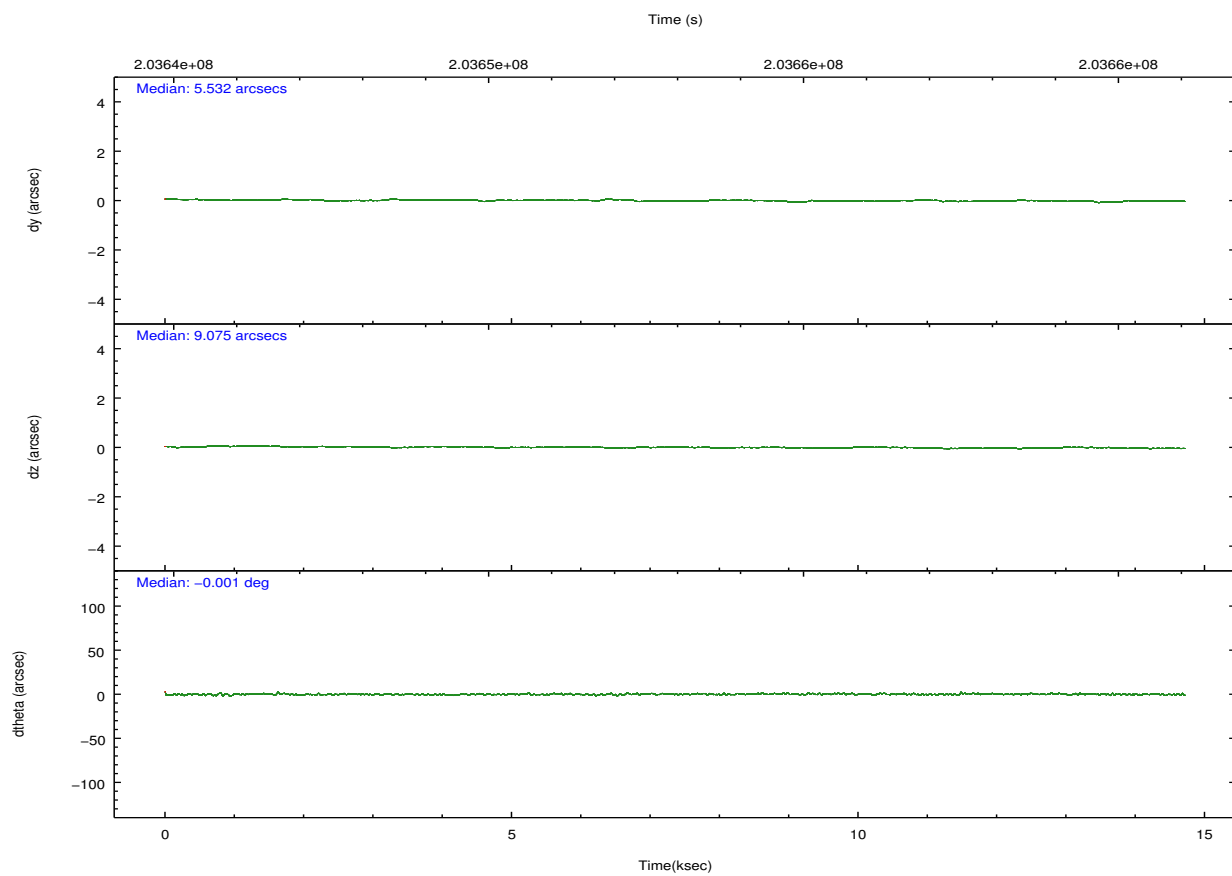
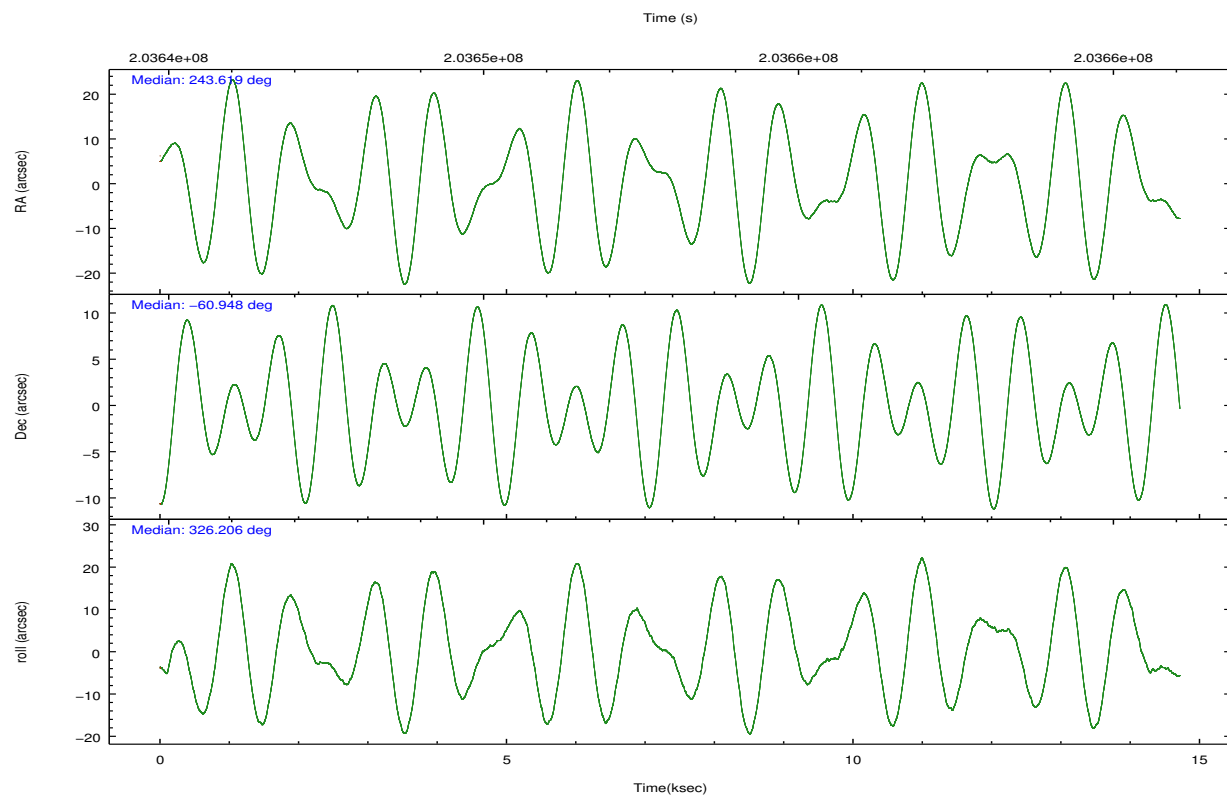
	ccd 0	ccd 1	ccd 2	ccd 3	ccd 6
grade 0 events	14968	17053	25235	30464	8712
	14%	17%	20%	24%	9%
grade 1 events	101	81	178	193	55
	0%	0%	0%	0%	0%
grade 2 events	3609	3855	4750	5256	2612
	3%	3%	3%	4%	2%
grade 3 events	1583	1666	1832	2102	1211
	1%	1%	1%	1%	1%
grade 4 events	1486	1679	1786	2058	1226
	1%	1%	1%	1%	1%
grade 5 events	3144	3462	3065	3576	3483
	3%	3%	2%	2%	3%
grade 6 events	2136	2414	2237	2557	2079
	2%	2%	1%	2%	2%
grade 7 events	74532	69790	84422	79633	76955
	73%	69%	68%	63%	79%

2.2 Compared Parameters

Parameter	Planned	Actual	Parameter	Planned	Actual
Instrument	ACIS	ACIS	Obspar format version number	7	7
Detector	ACIS-01236	ACIS-01236	Obspar file type	PREDICTED	ACTUAL
Grating	NONE	NONE	Obspar update status	NONE	UPDATED
Data mode	VFAINT	VFAINT	Number of optional ACIS chips dropped	0	0
Observation mode	POINTING	POINTING	On-chip summing requested	N	N
[deg] Pointing RA	243.563340	243.6196339982798	Subarray requested	NONE	NONE
[deg] Pointing Dec	-60.946681	-60.94835986392243	Alternating exposures requested	N	N
[deg] Pointing Roll	325.955396	326.2132877804655	[s] Primary exposure time	0.000000	3.1
[mm] SIM focus pos	-0.782348	-0.7809083437167272			
[mm] SIM defocus	0	0.001439871863259334			
[mm] SIM translation stage pos	-233.592463	-233.5874344608287			
[mm] SIM translation stage offset	0	-0.005018542100998502			
[s] Observation start time (MET)	203645793.184000	203645416.97775			
Observation start date	2004-06-15T00:15:29	2004-06-15T00:10:16			
[s] Observation end time (MET)	203660319.184000	203660693.06592			
Observation end date	2004-06-15T04:17:35	2004-06-15T04:24:53			
Read mode	TIMED	TIMED			

2.3 Aspect



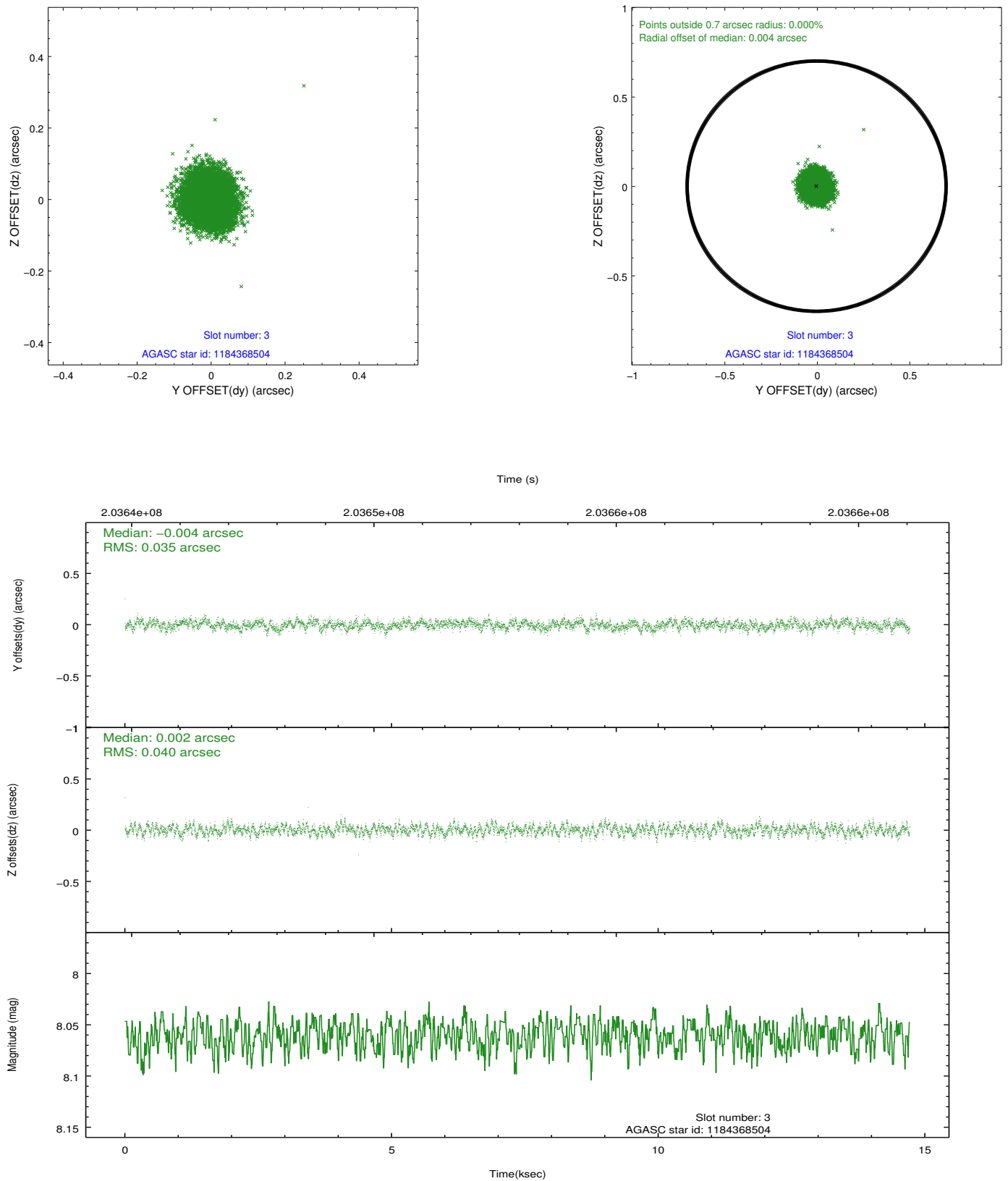


Slot Statistics

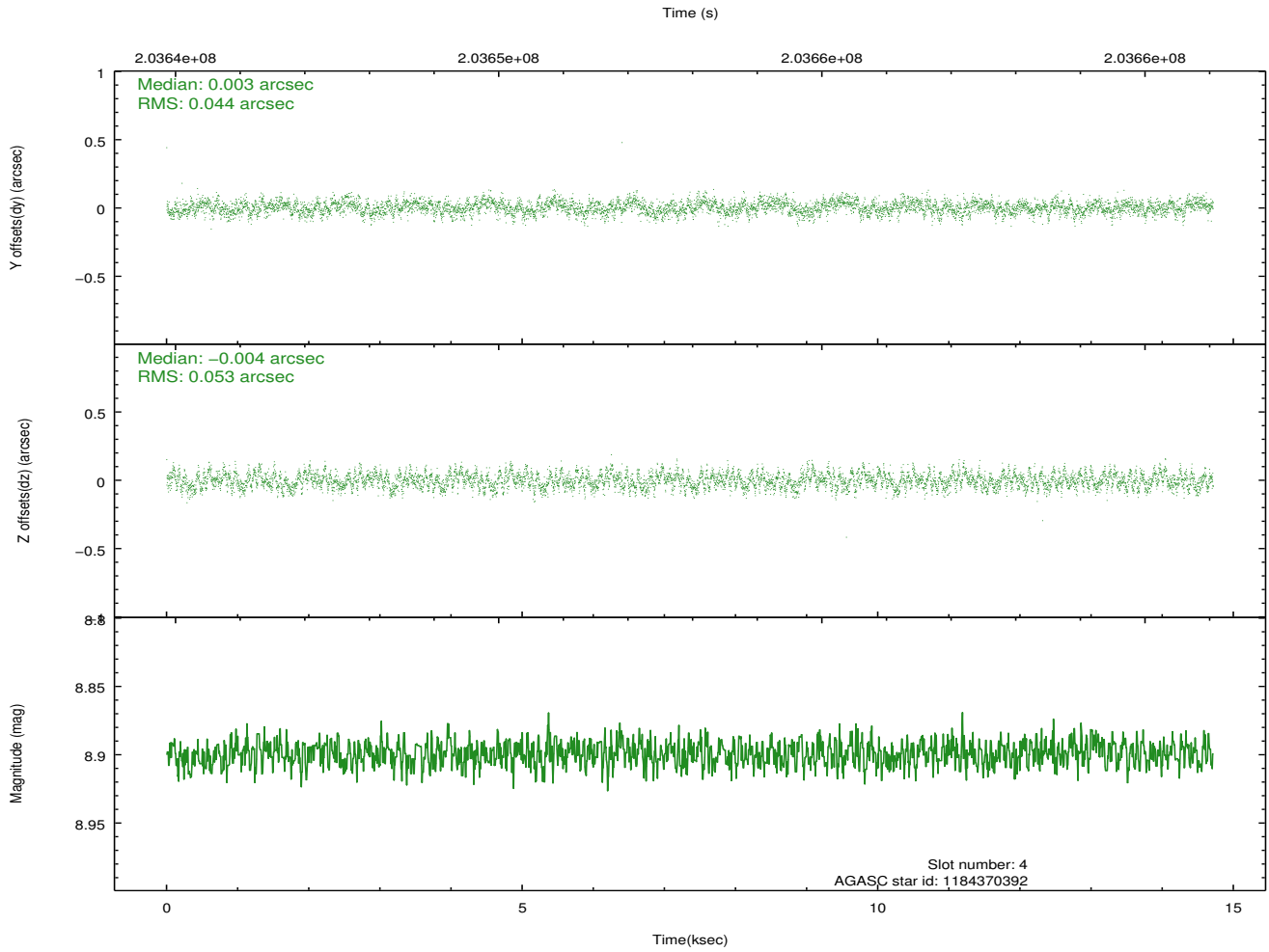
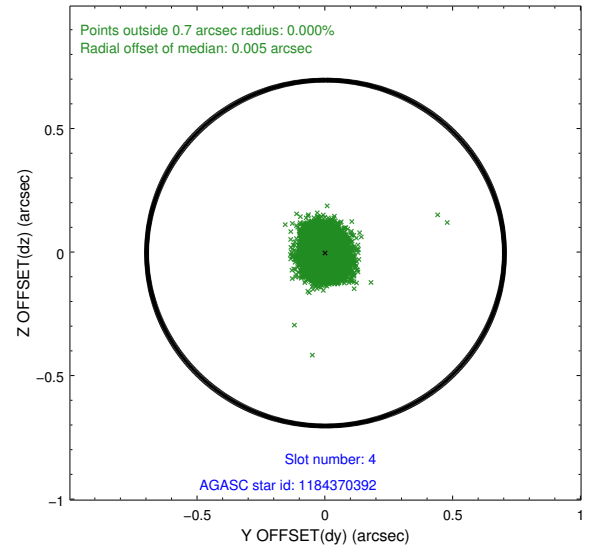
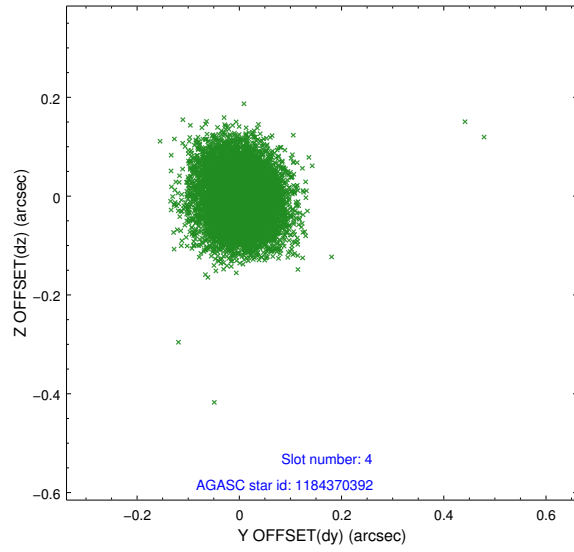
slot	status	id	mag	n_pts	med_dy	med_dz	dr1	dr2	ra	dec	mean_y	mean_z
0	FID	ACIS-I-4	7.19	3588	0.095	0.035	0.007	0.013	0.000000	0.000000	2154.25	1067.38
1	FID	ACIS-I-5	7.23	3590	-0.219	0.021	0.006	0.011	0.000000	0.000000	-1813.62	1065.38
2	FID	ACIS-I-6	7.25	3590	0.024	0.011	0.008	0.014	0.000000	0.000000	399.44	1709.68
3	GUIDE	1184368504	8.06	7177	-0.004	0.002	0.057	0.089	244.221417	-60.888502	841.28	814.14
4	GUIDE	1184370392	8.90	7176	0.003	-0.004	0.073	0.116	242.836162	-61.139154	-654.52	-1287.18
5	GUIDE	1184371048	8.54	7176	0.025	0.024	0.061	0.098	243.777147	-61.267740	954.39	-750.98
6	GUIDE	1184373640	8.97	7178	-0.030	0.023	0.091	0.142	241.981565	-61.085651	-1981.80	-1983.55
7	GUIDE	1184371152	8.30	7112	0.007	-0.042	0.085	0.129	243.531081	-60.141333	-1671.38	2369.11

2.4 Star Slots

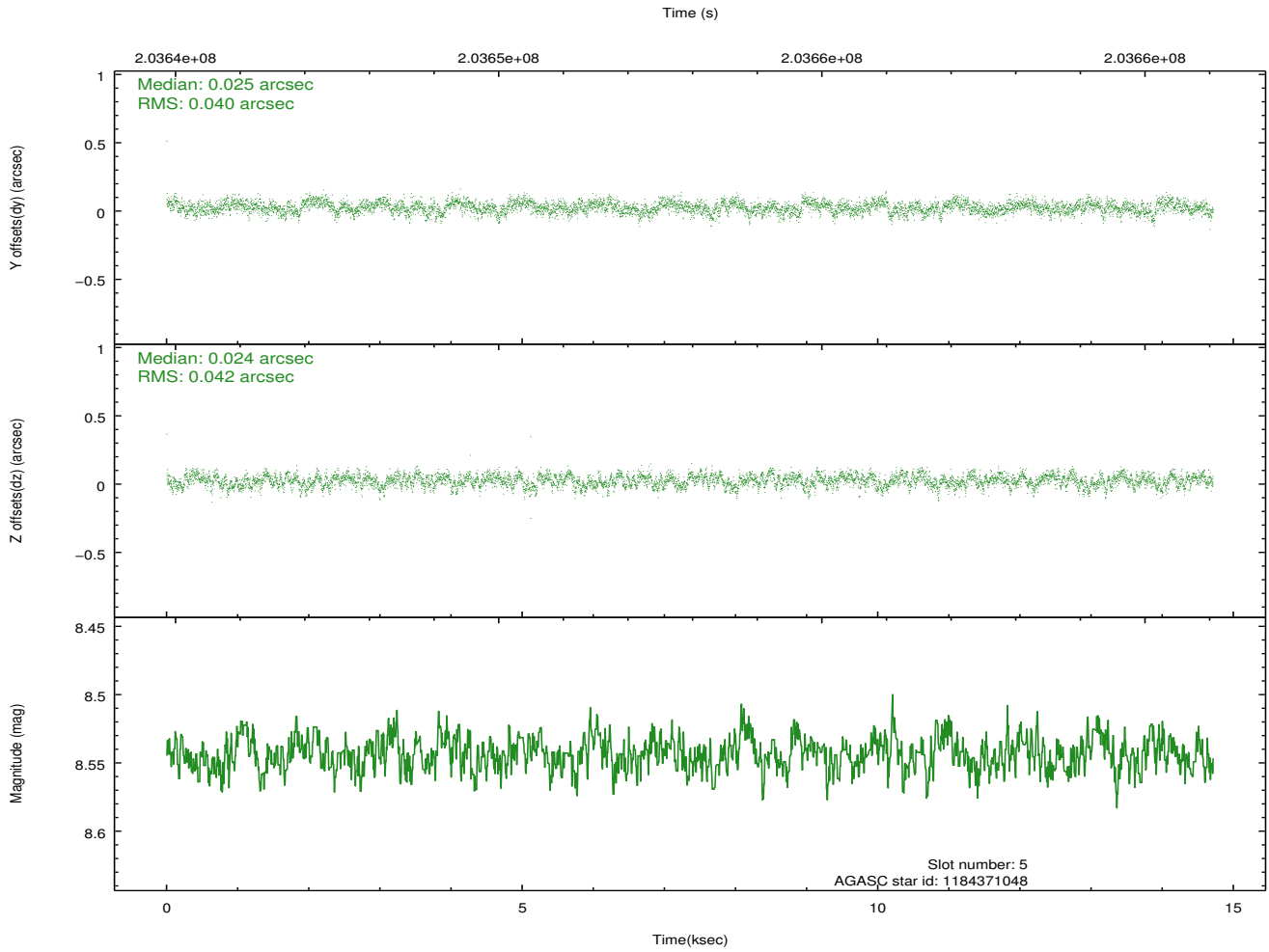
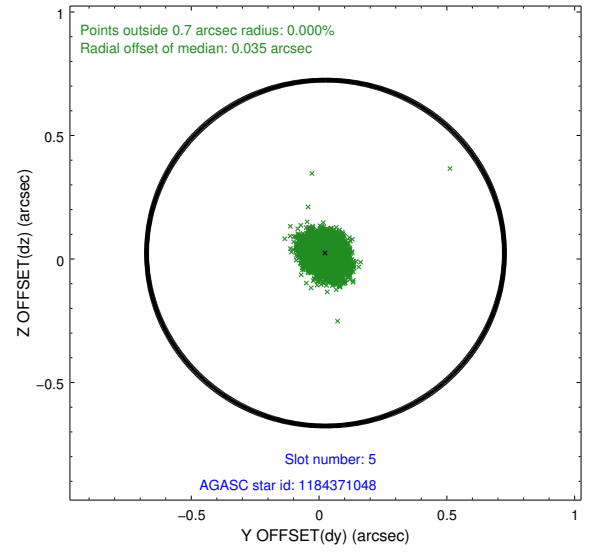
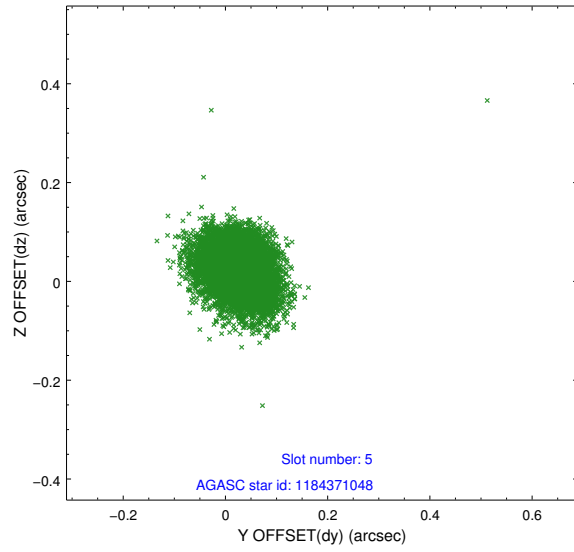
2.4.1 Slot 3



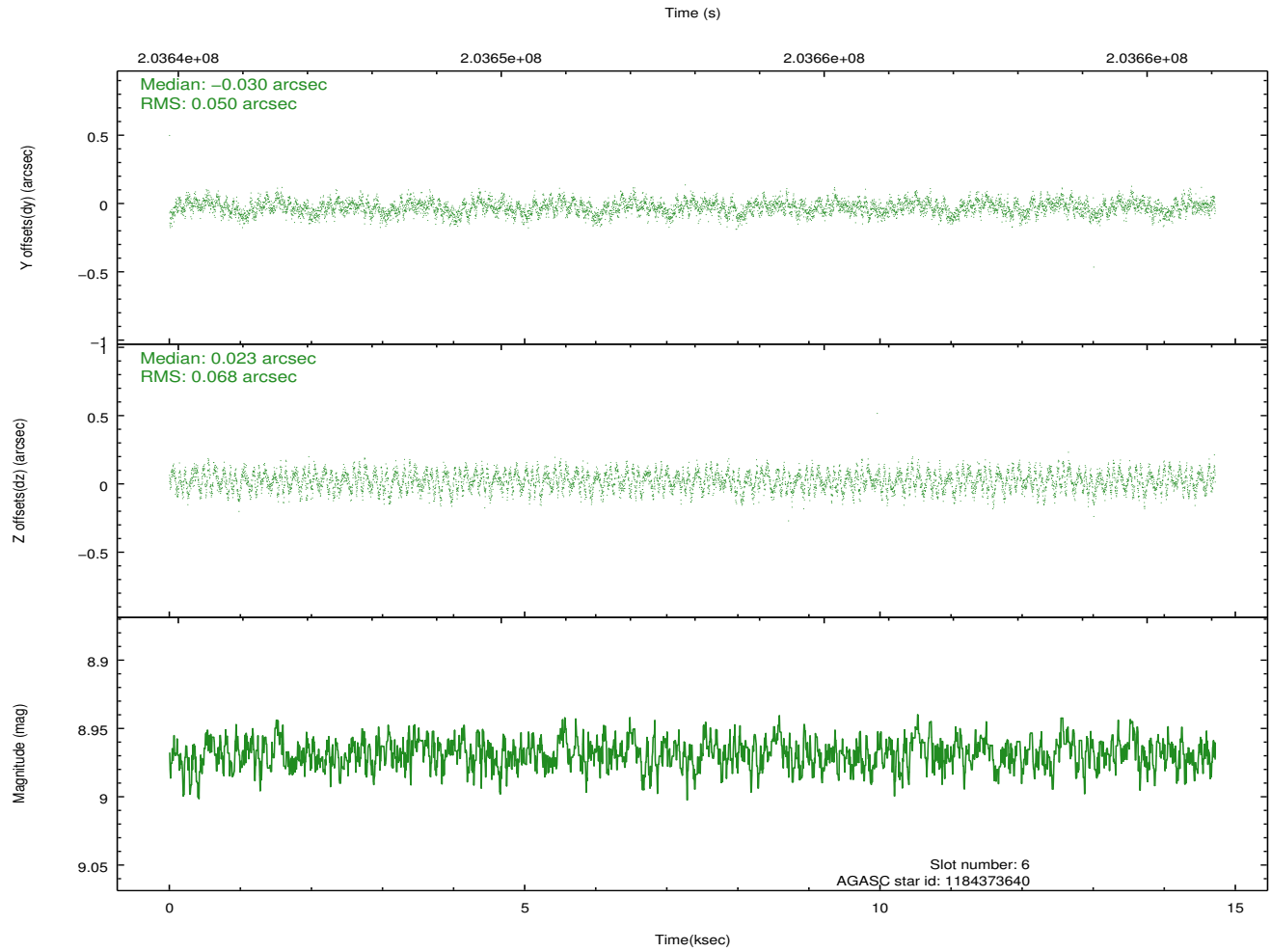
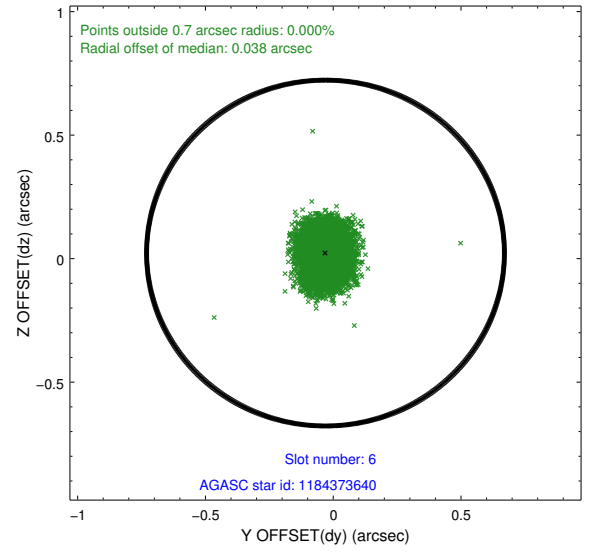
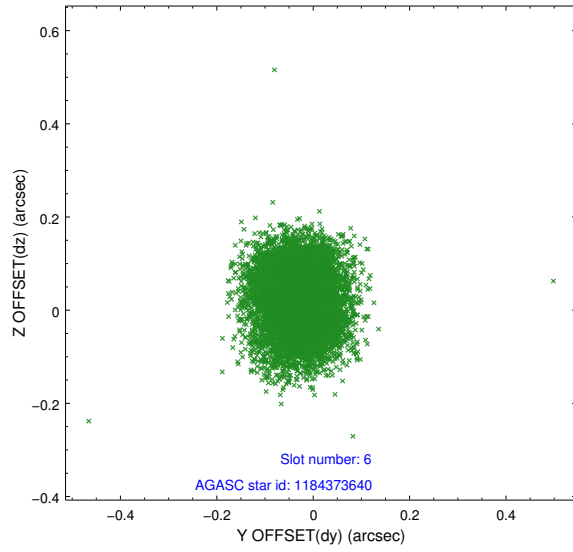
2.4.2 Slot 4



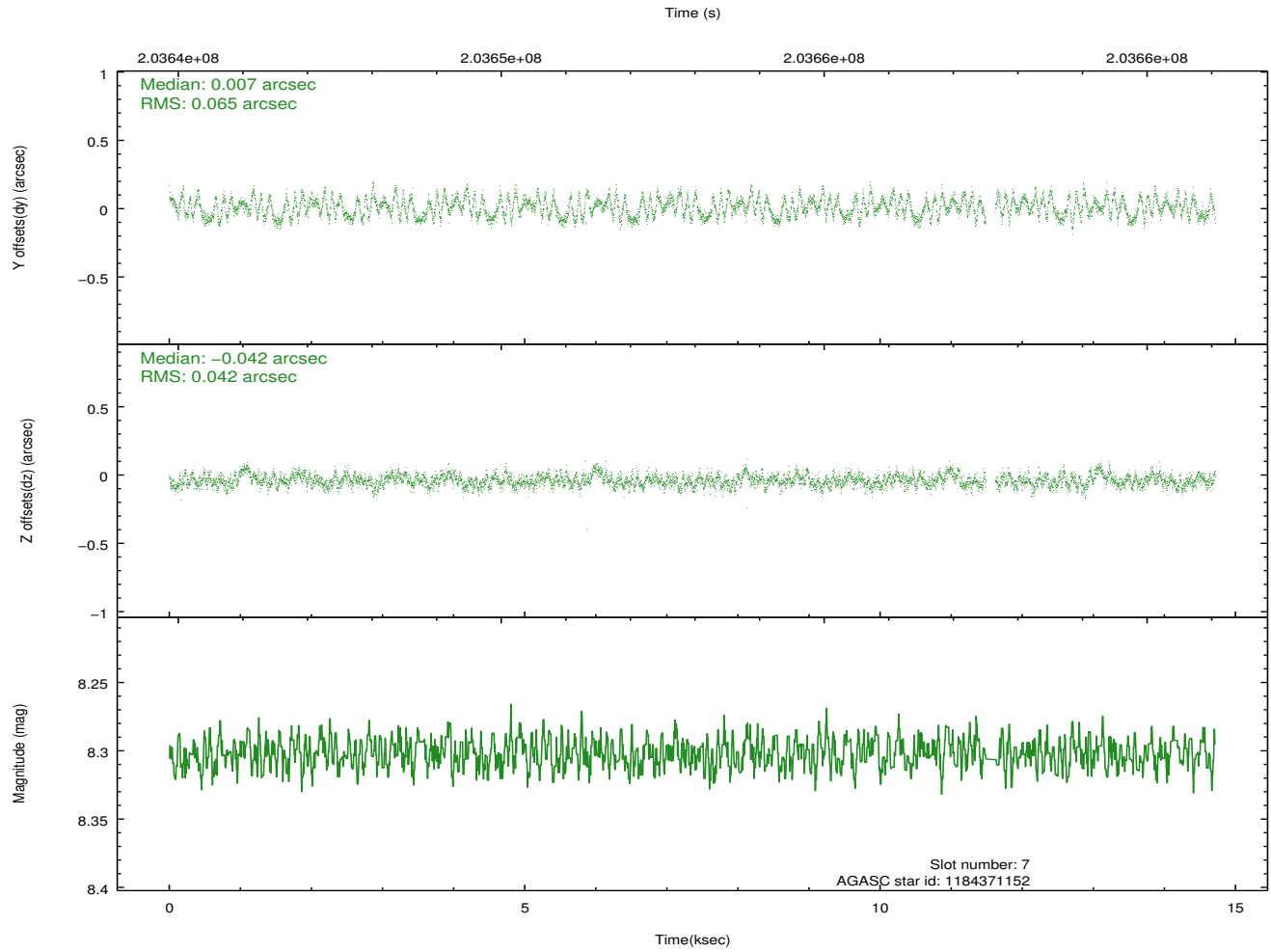
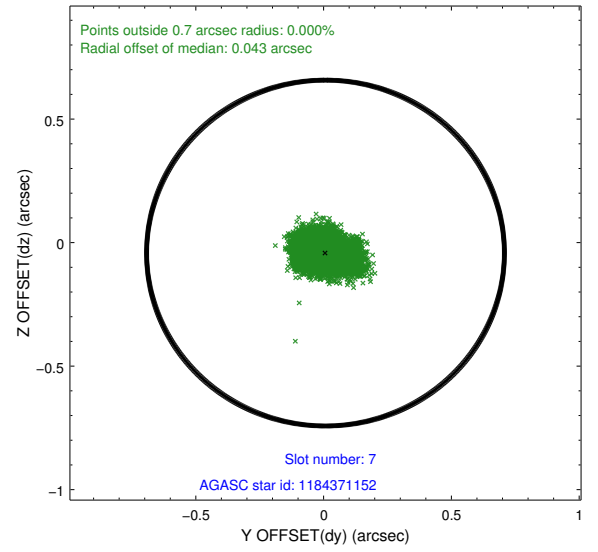
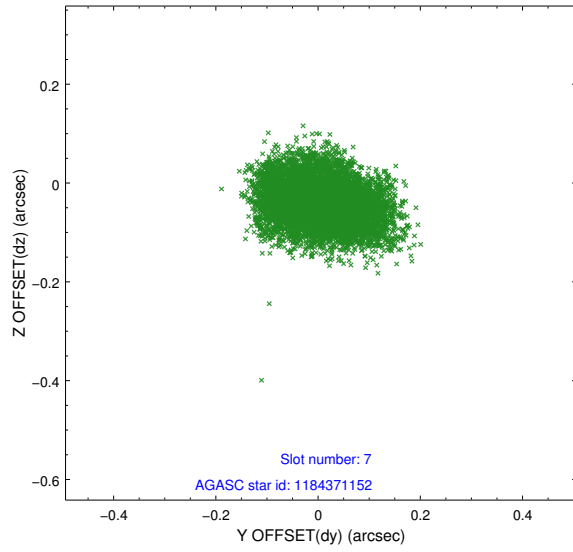
2.4.3 Slot 5



2.4.4 Slot 6

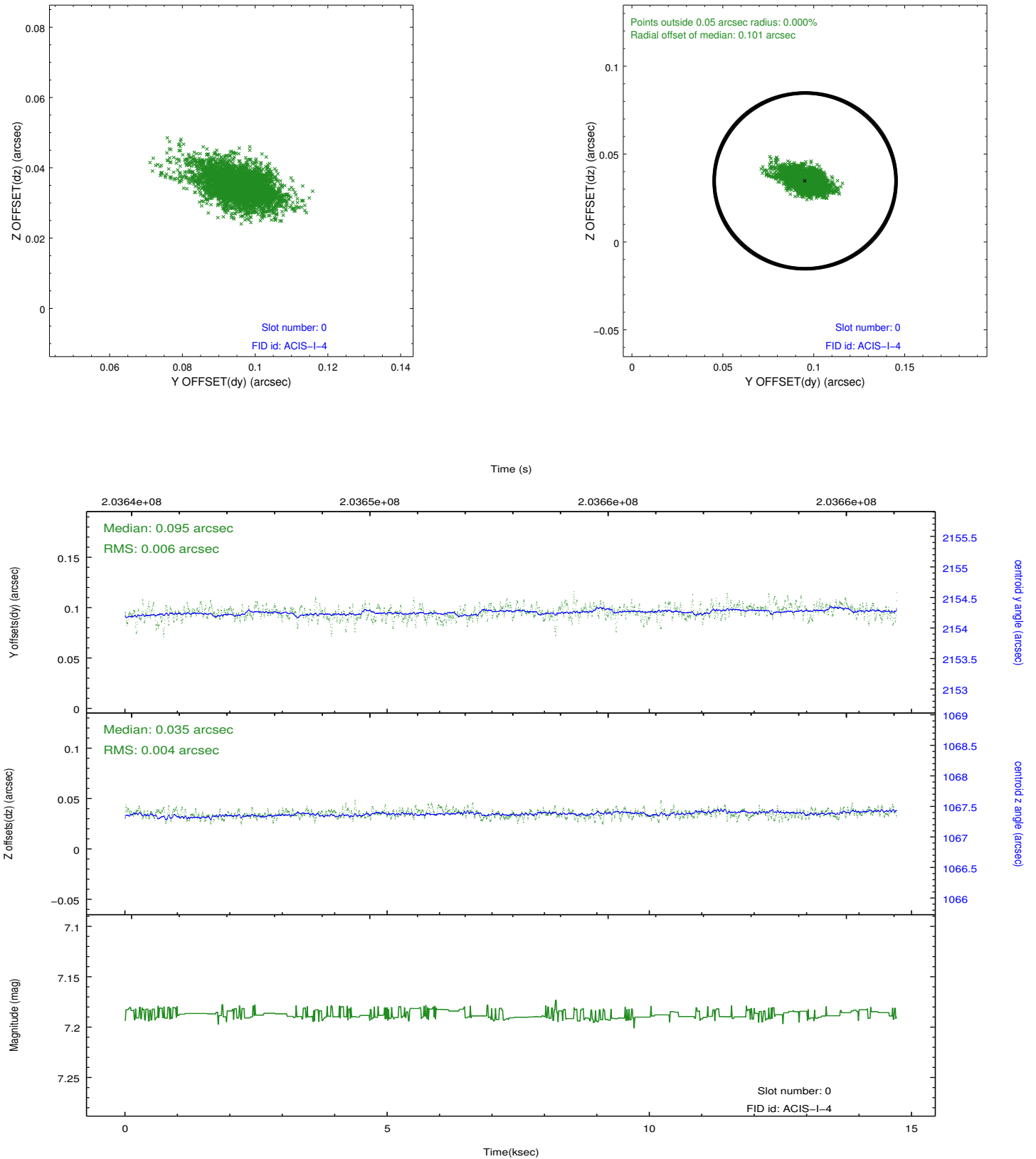


2.4.5 Slot 7

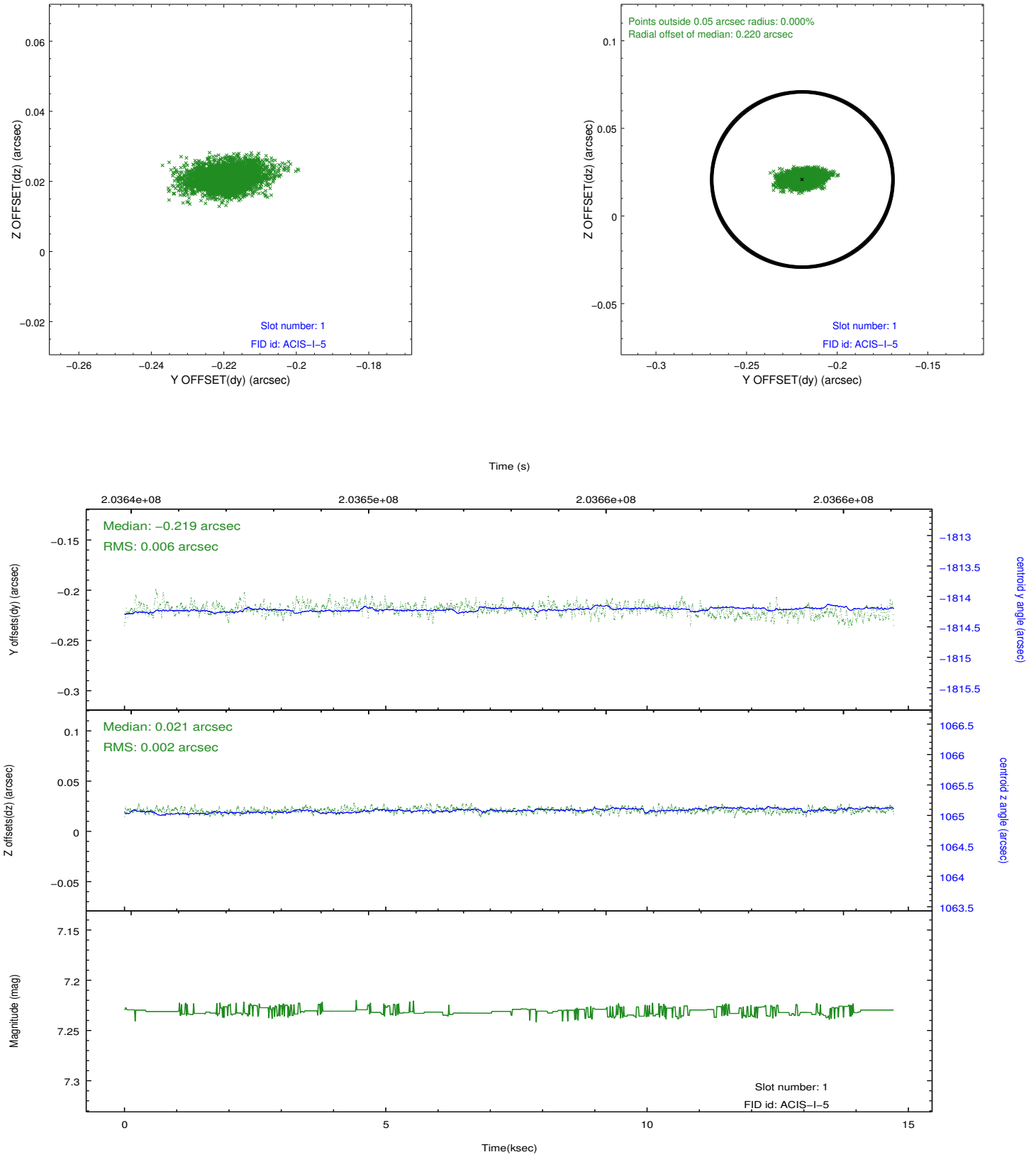


2.5 FID Slots

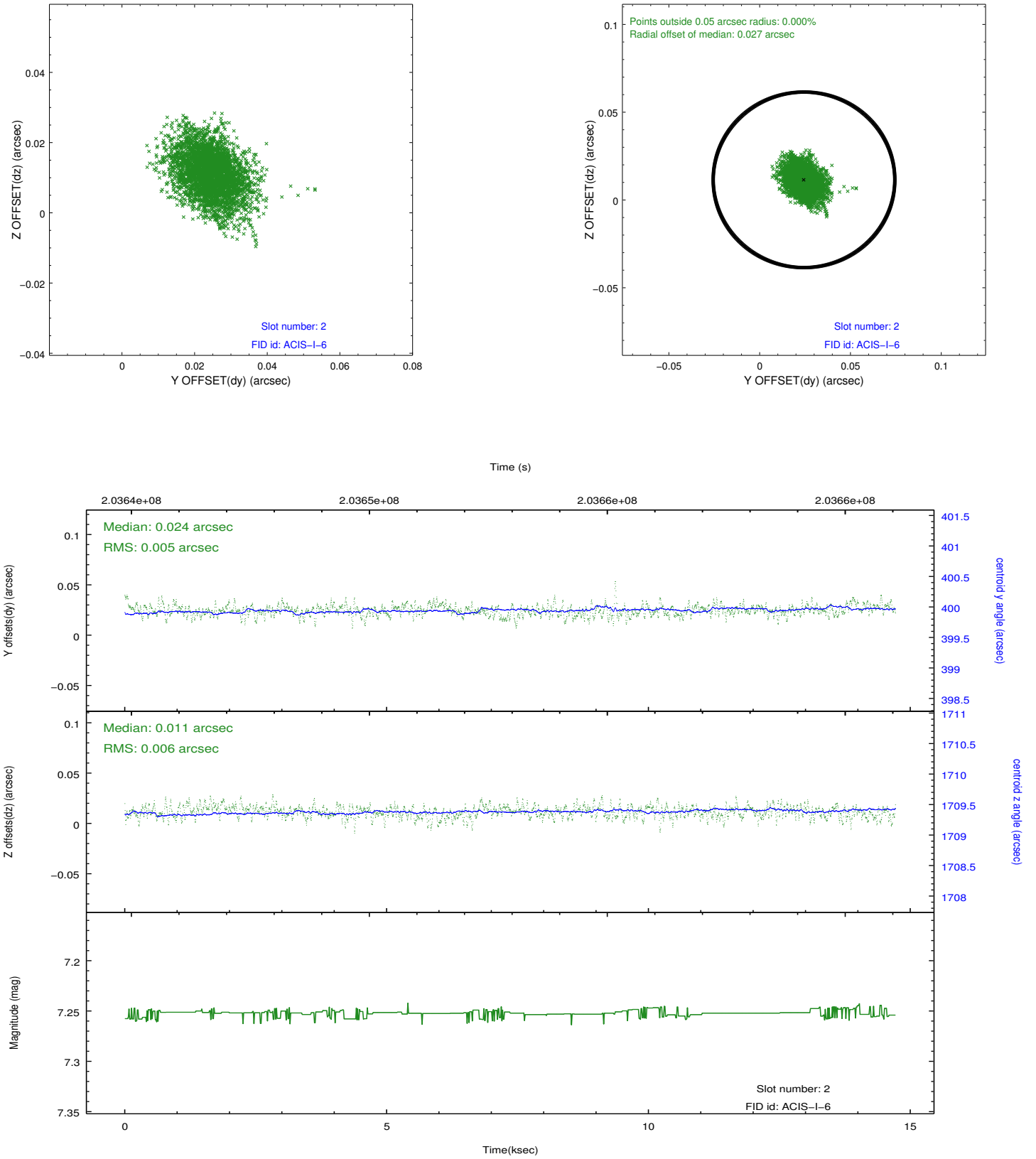
2.5.1 Slot 0



2.5.2 Slot 1



2.5.3 Slot 2



A Summary

A.1 Status

V&V Scientist	Jen Lauer
V&V Date (YYYY-MM-DD)	2012.12.18
V&V Edition	1
V&V Disposition and Status	OK
V&V Charge Time	14.303

A.2 Comments

Joint Proposal: XMM