

V&V Reference Report

L2 ASCDS Version : 7.6.7.1

Observation 4948 - L2 Version 001
Chandra X-Ray Center

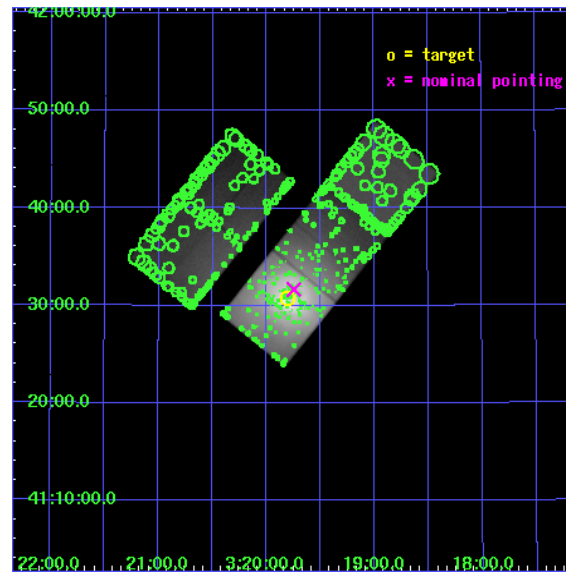
L2 Processing Date : Apr 15 2006

Contents

1	Front	2
2	OBI	3
2.1	OBI	3
2.1.1	Images	3
2.1.2	Bias	3
2.1.3	Parameters	4
2.1.4	Events	4
2.2	Compared Parameters	5
2.3	Aspect	6
2.4	Star Slots	9
2.4.1	Slot 3	9
2.4.2	Slot 4	10
2.4.3	Slot 5	11
2.4.4	Slot 6	12
2.4.5	Slot 7	13
2.5	FID Slots	14
2.5.1	Slot 0	14
2.5.2	Slot 1	15
2.5.3	Slot 2	16
3	Point Sources	17
A	Summary	18
A.1	Status	18
A.2	Comments	18

1 Front

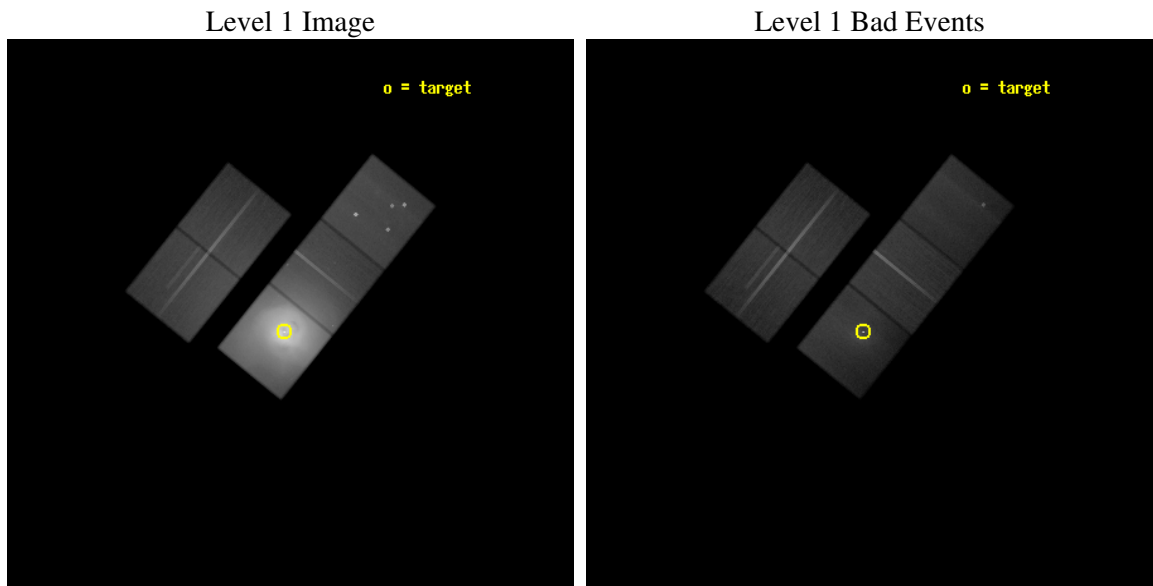
seq_num	800398
obs_id	4948
title	A Megasecond Image of the Core of the Perseus Cluster
observer	Prof Andrew Fabian
object	Abell 426
dtcycle	0
cycle	P
ra_targ	49.950833
dec_targ	41.511722
ra_nom	49.936438111094
dec_nom	41.527804243022
roll_nom	128.93698327597
revision	2
ontime	120180.79976892
livetime	118610.54914413
ontime2	120171.37679818
ontime3	120168.23584789
ontime5	120180.79976892
ontime6	120174.51775861
ontime7	120180.79976892
l2events	11751108



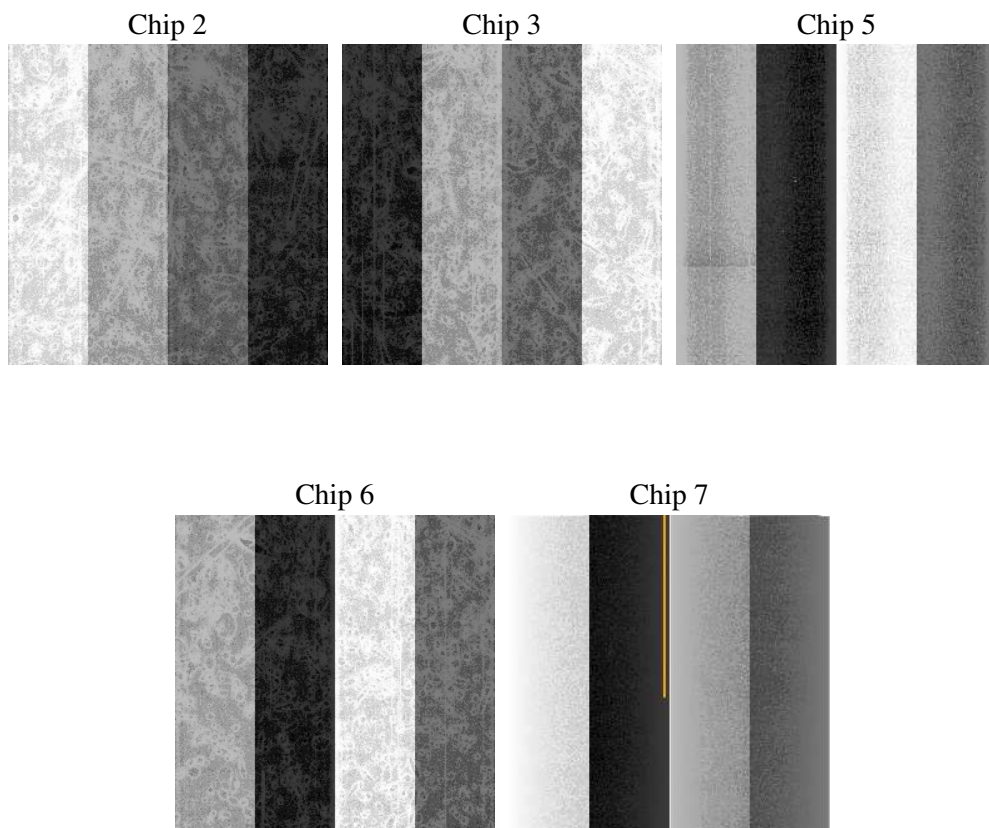
2 OBI

2.1 OBI

2.1.1 Images



2.1.2 Bias



2.1.3 Parameters

obi_num	1
ascdsver	7.6.7.1
caldsver	3.2.1
date	2006-04-15T07:35:17
revision	2

sched_exp_time	119995.378000
ontime	121252.46789116
ontime2	121243.04492041
ontime3	121239.90397012
ontime5	121252.46791106
ontime6	121246.18588084
ontime7	121252.46789116
l1events	15532110

2.1.4 Events

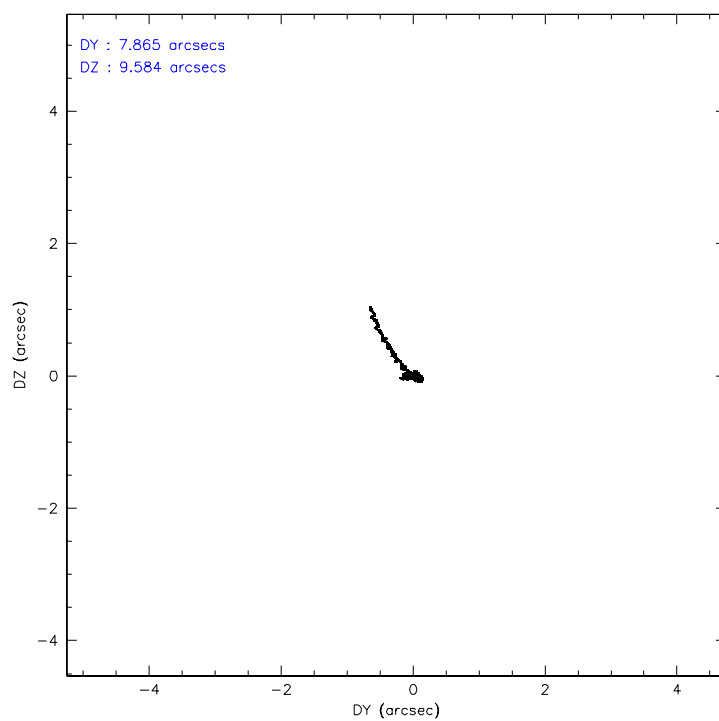
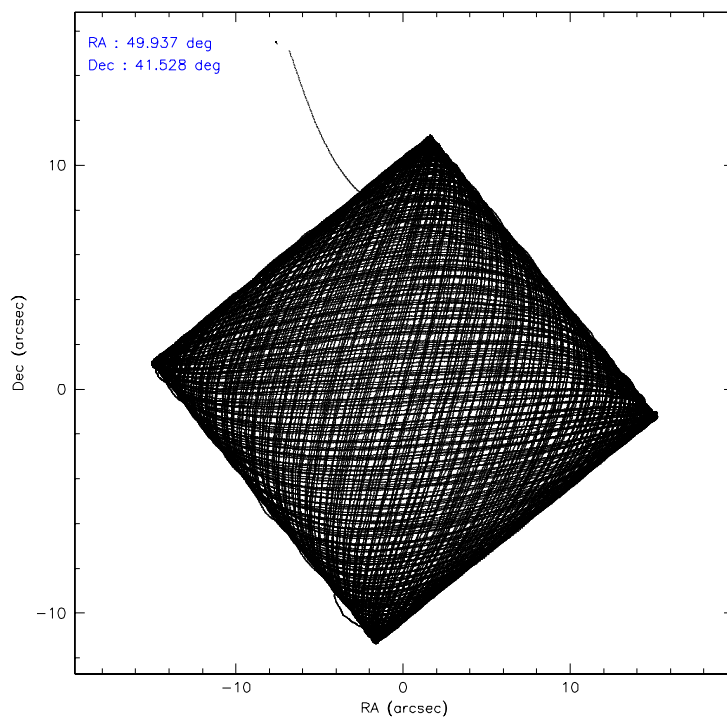
	ccd 2	ccd 3	ccd 5	ccd 6	ccd 7
level 1 events	1087329	1254218	1304715	1955427	9930421
rejected events	752715	720455	575216	762578	694873
rejected %	69%	57%	44%	38%	6%

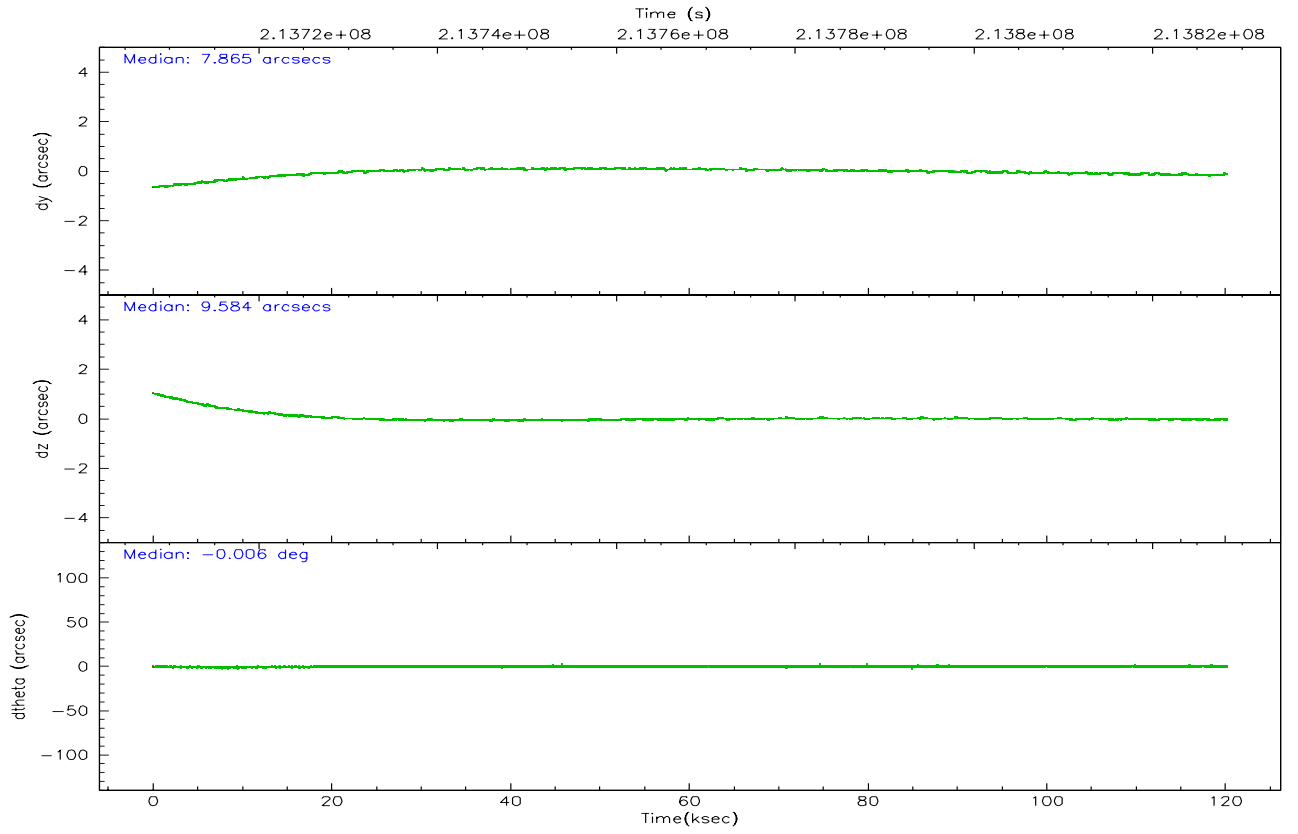
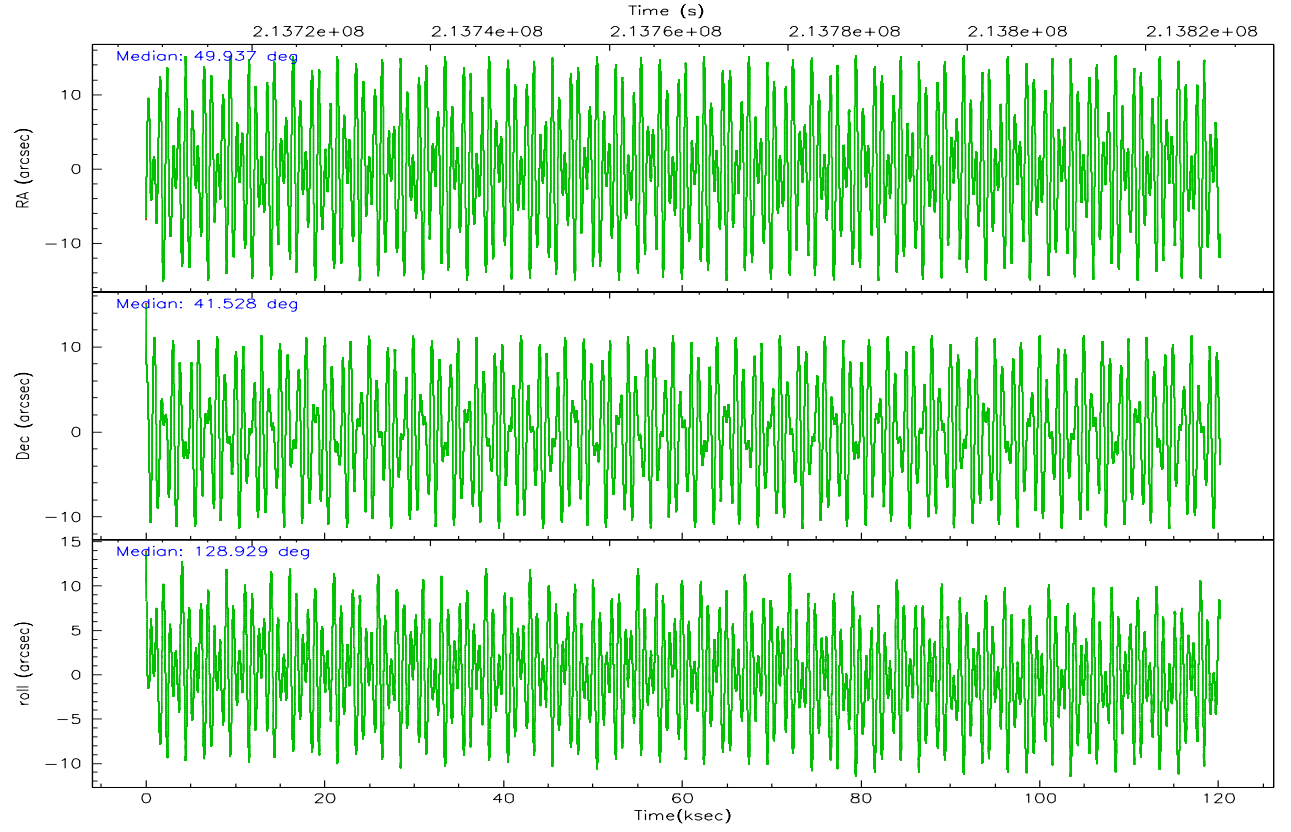
	ccd 2	ccd 3	ccd 5	ccd 6	ccd 7
grade 0 events	237647	399526	121189	922463	2244999
	21%	31%	9%	47%	22%
grade 1 events	1594	2244	534	4218	5588
	0%	0%	0%	0%	0%
grade 2 events	43427	62348	238152	133237	2671795
	3%	4%	18%	6%	26%
grade 3 events	16993	23515	25339	44403	987538
	1%	1%	1%	2%	9%
grade 4 events	16888	23265	24766	44061	968998
	1%	1%	1%	2%	9%
grade 5 events	26640	32401	60469	35510	137481
	2%	2%	4%	1%	1%
grade 6 events	20661	26424	325196	50522	2376752
	1%	2%	24%	2%	23%
grade 7 events	723479	684495	509070	721013	537270
	66%	54%	39%	36%	5%

2.2 Compared Parameters

Parameter	Planned	Actual	Parameter	Planned	Actual
Instrument	ACIS	ACIS	Obspar format version number	6	6
Detector	ACIS-23567	ACIS-23567	Obspar file type	PREDICTED	ACTUAL
Grating	NONE	NONE	Obspar update status	NONE	UPDATED
Data mode	FAINT	FAINT	On-chip summing requested	N	N
Observation mode	POINTING	POINTING	Subarray requested	NONE	NONE
Pointing RA	49.970528	49.93643811109381	Alternating exposures requested	N	N
Pointing Dec	41.518367	41.52780424302187	Primary exposure time	0.000000	3.1
Pointing Roll	128.757760	128.9369832759732			
SIM focus pos (mm)	-0.684267	-0.6828225247311905			
SIM defocus (mm)	0	0.001444936568705701			
SIM translation stage pos (mm)	-190.132523	-190.1400660498719			
SIM translation stage offset (mm)	0	0.00754346686406393			
Observation start time	213708336.184000	213706800.00044			
Observation start date	2004-10-09T11:24:32	2004-10-09T11:00:00			
Observation end time	213828331.184000	213828543.35588			
Observation end date	2004-10-10T20:44:27	2004-10-10T20:49:03			
Read mode	TIMED	TIMED			

2.3 Aspect



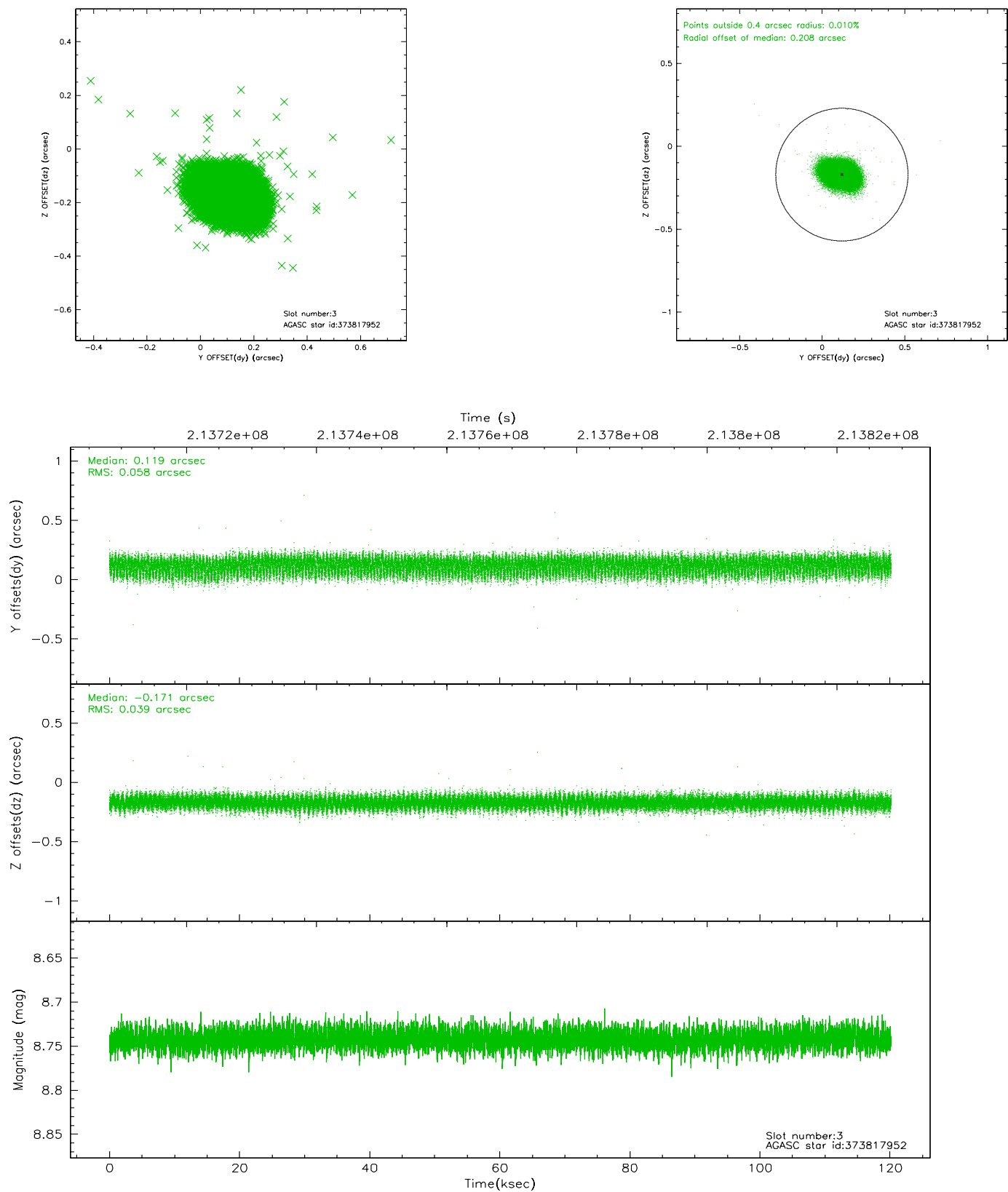


Slot Statistics

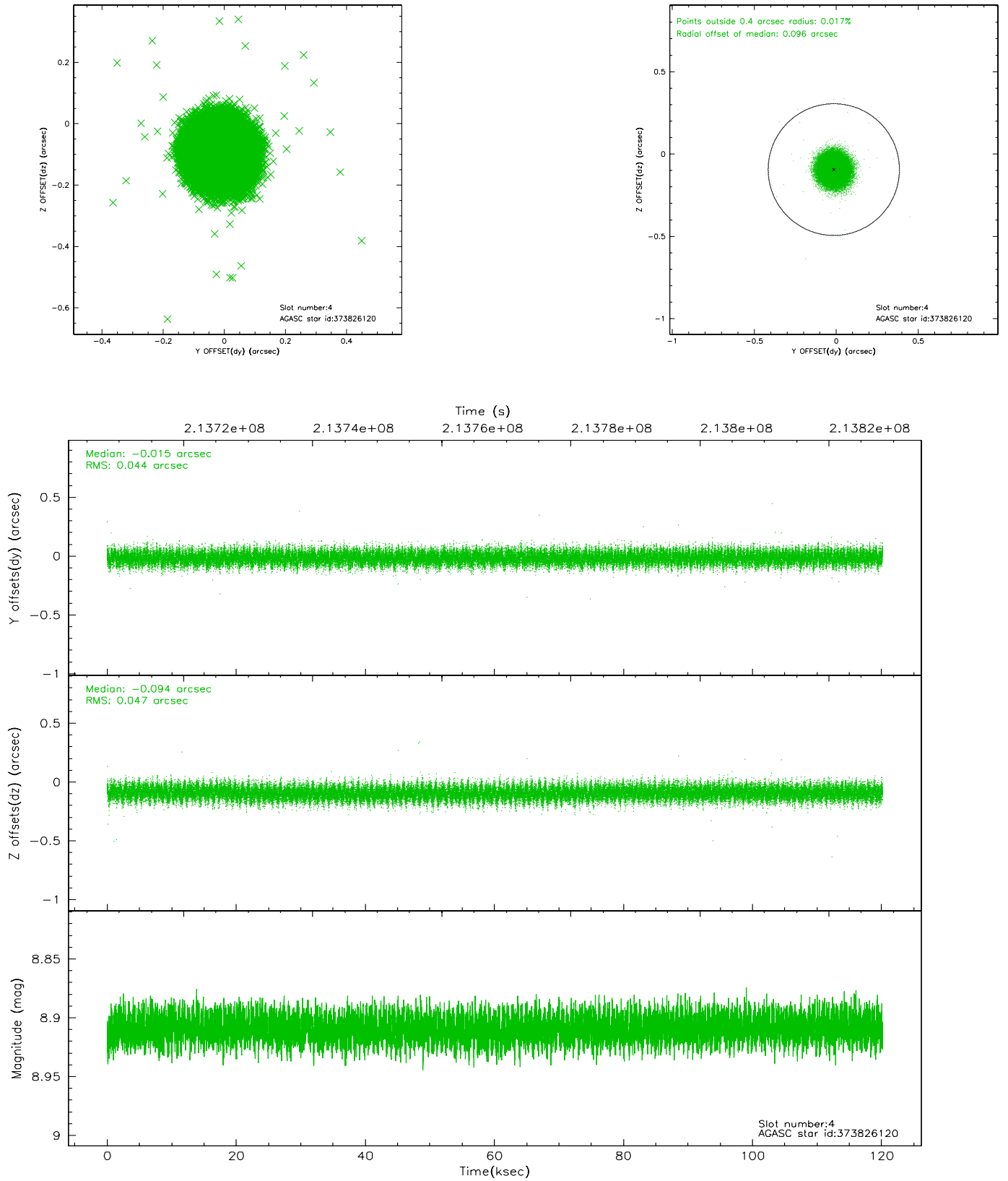
slot	status	id	mag	n_pts	med_dy	med_dz	dr1	dr2	ra	dec	mean_y	mean_z
0	FID	ACIS-S-1	7.19	29310	0.007	0.008	0.009	0.024	0.000000	0.000000	935.45	-1726.50
1	FID	ACIS-S-4	7.20	29315	0.040	-0.005	0.008	0.021	0.000000	0.000000	2152.82	177.76
2	FID	ACIS-S-5	7.24	29311	-0.074	0.009	0.007	0.019	0.000000	0.000000	-1813.64	171.22
3	GUIDE	373817952	8.74	58603	0.119	-0.171	0.074	0.119	49.913424	40.978510	-1418.33	1337.48
4	GUIDE	373826120	8.91	58598	-0.015	-0.094	0.069	0.110	49.738165	41.186341	-537.38	1238.67
5	GUIDE	374345008	9.38	58589	0.045	-0.053	0.088	0.144	48.768668	41.619367	2325.59	2281.03
6	GUIDE	374352808	8.78	58600	-0.151	0.138	0.084	0.165	49.969955	42.208621	1938.93	-1553.88
7	GUIDE	376057824	8.35	58556	0.004	0.172	0.071	0.113	50.665569	41.926280	-14.15	-2375.38

2.4 Star Slots

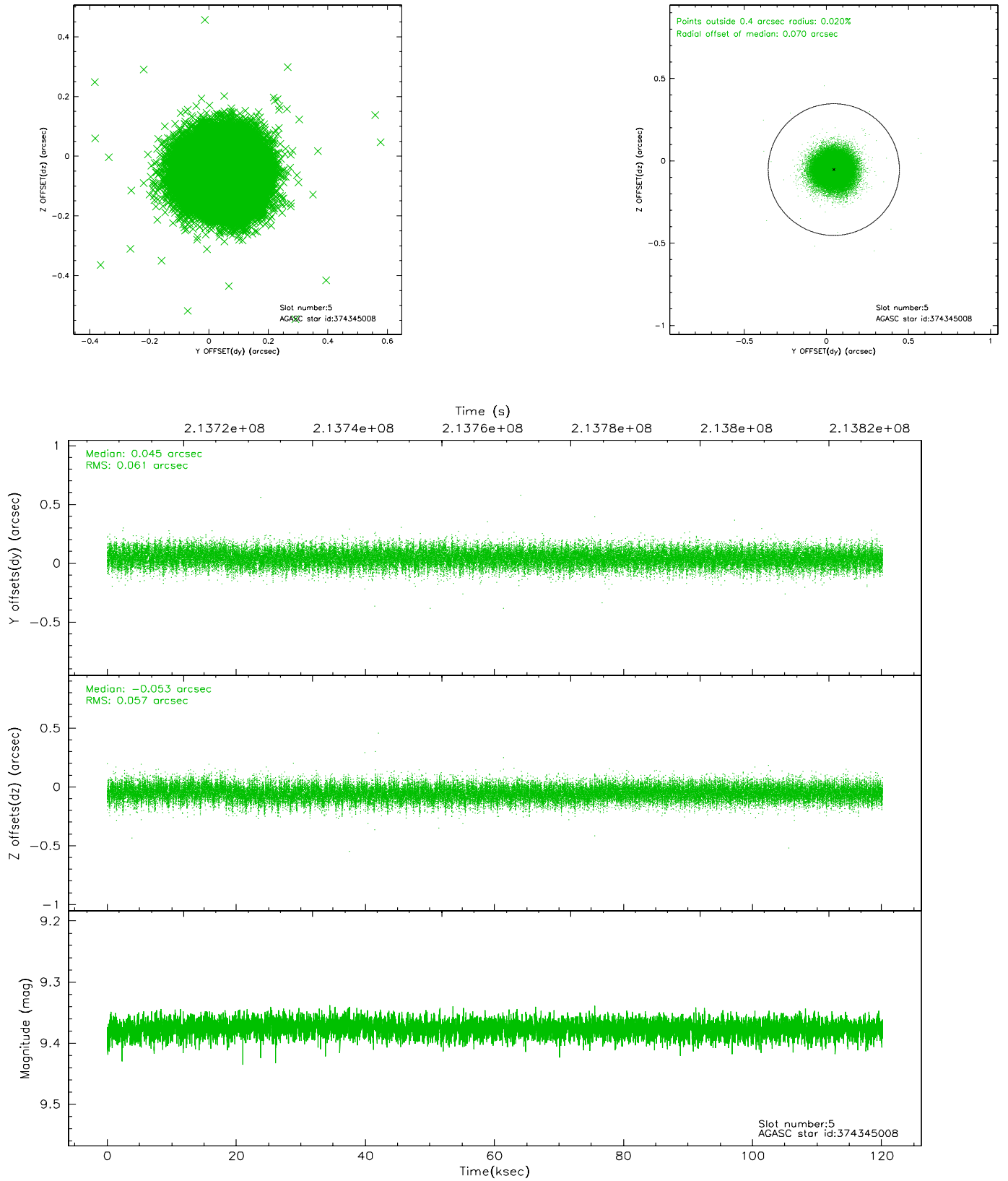
2.4.1 Slot 3



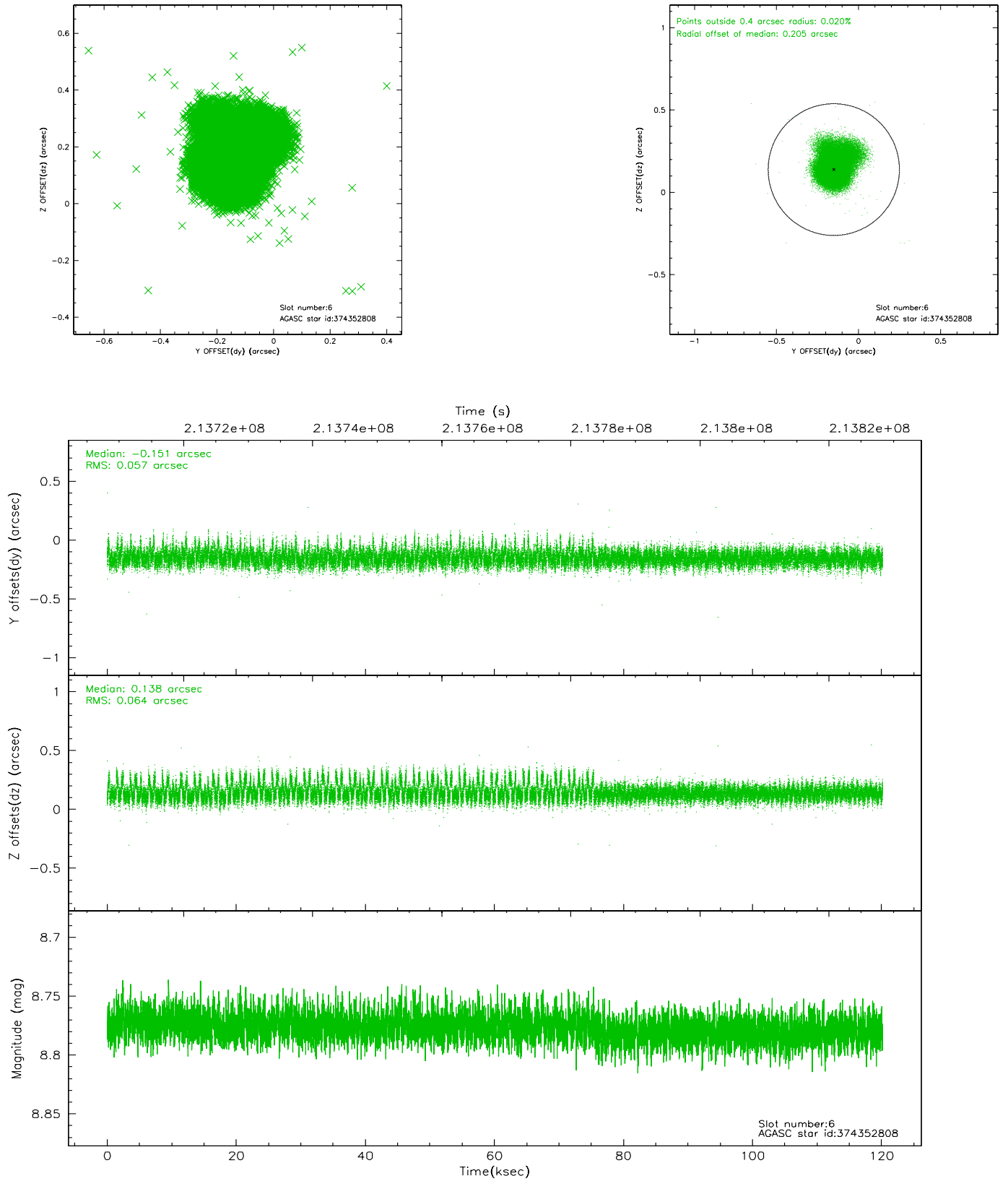
2.4.2 Slot 4



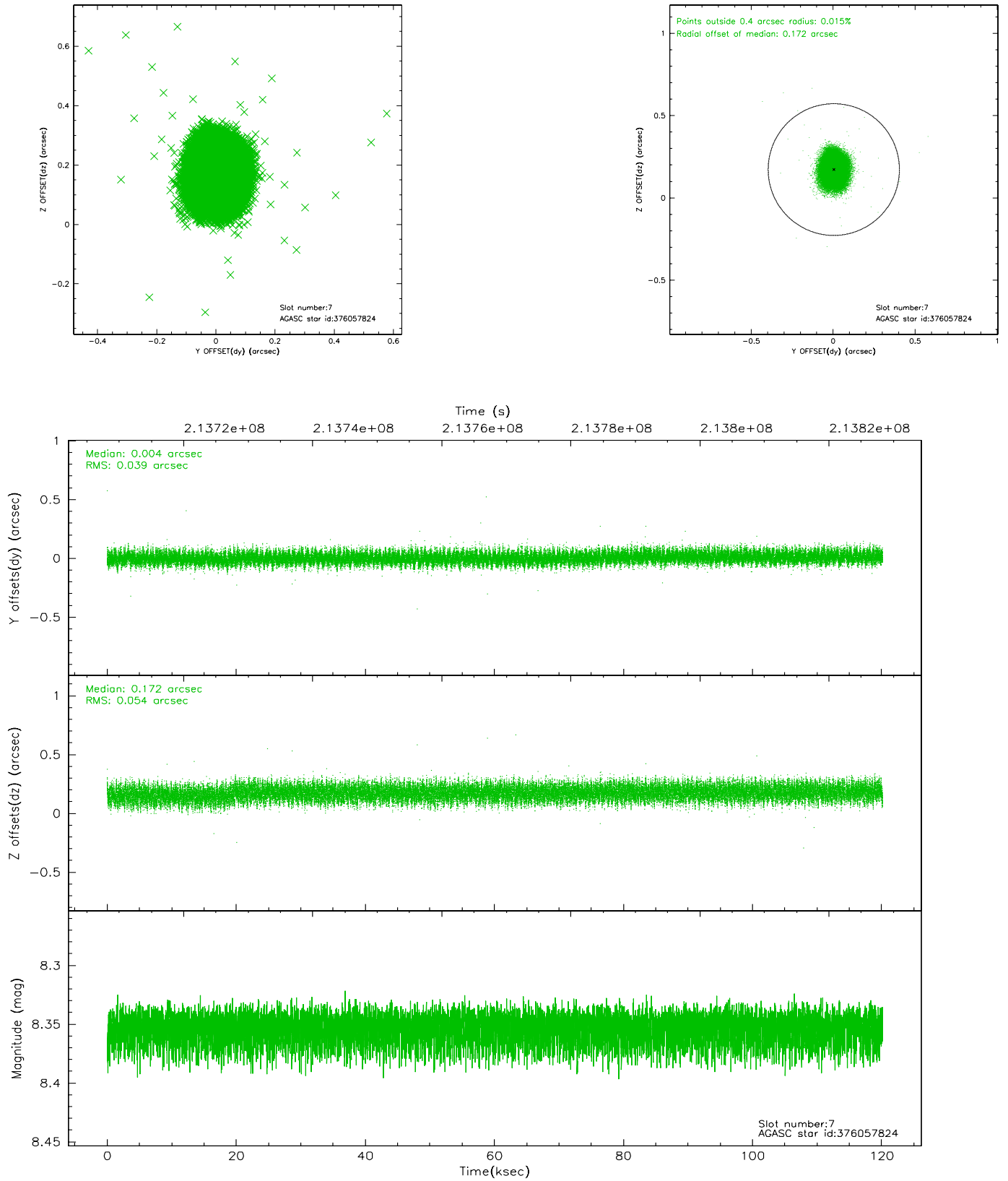
2.4.3 Slot 5



2.4.4 Slot 6

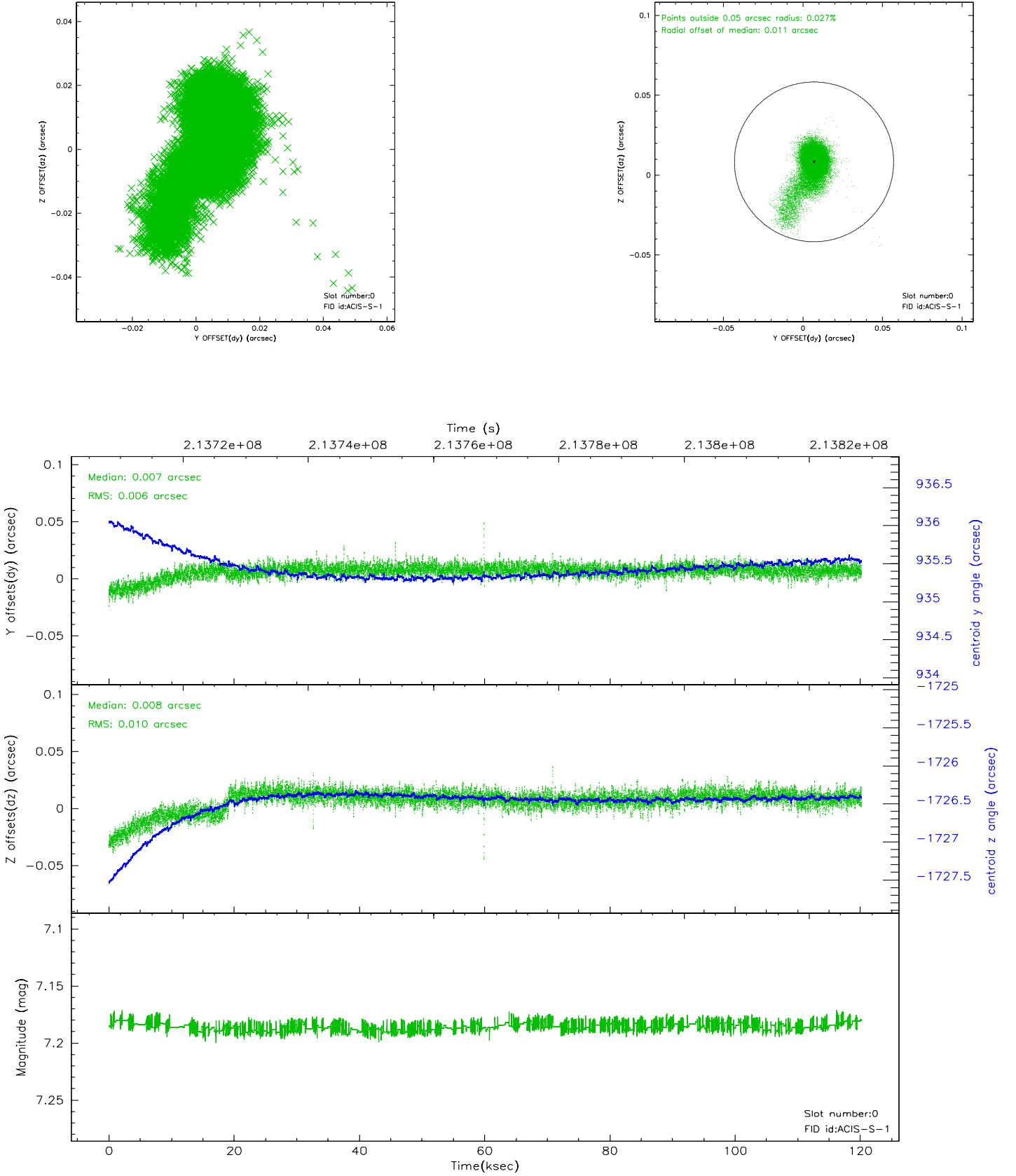


2.4.5 Slot 7

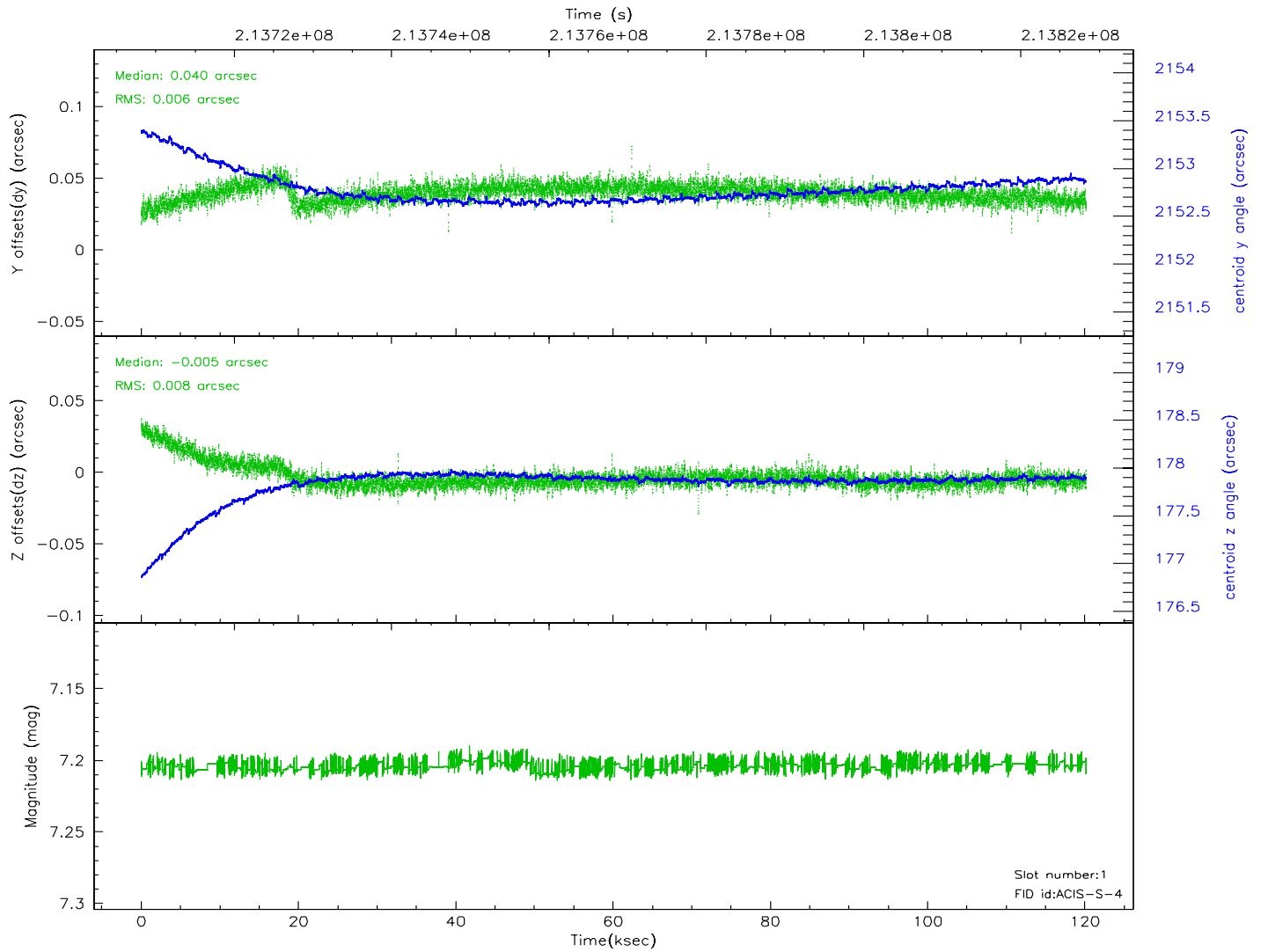
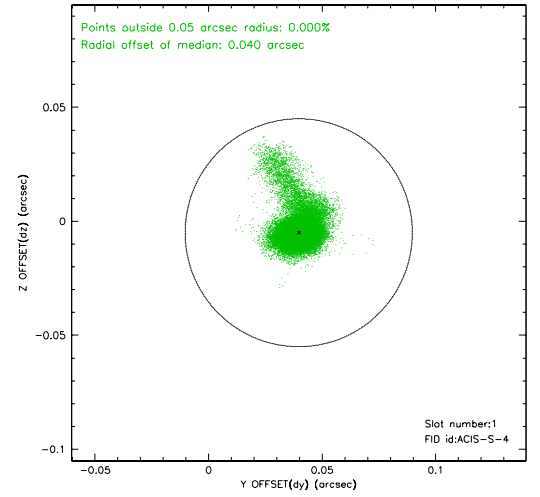
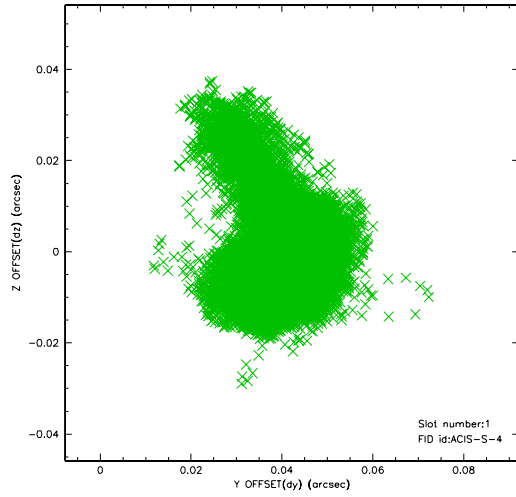


2.5 FID Slots

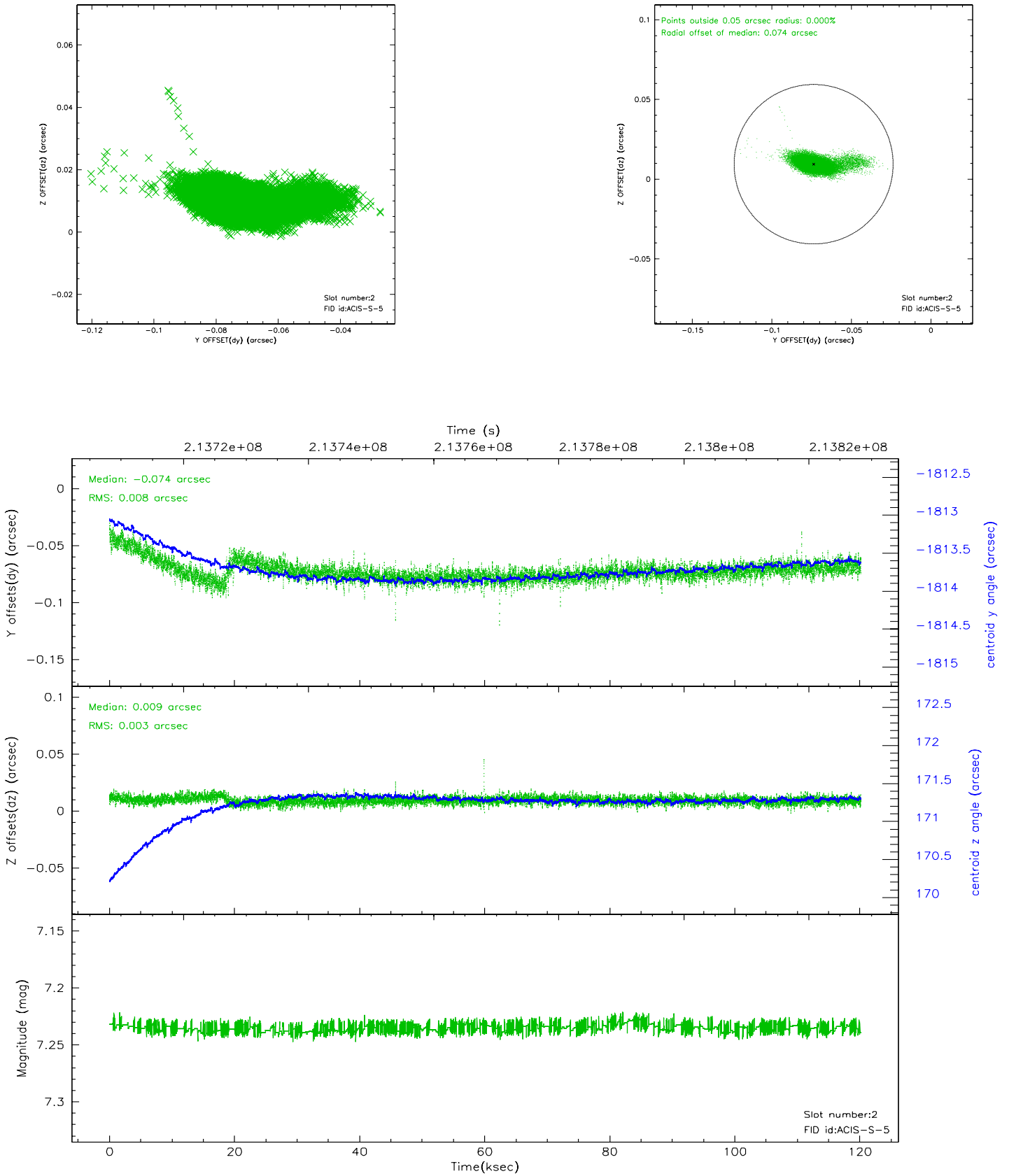
2.5.1 Slot 0



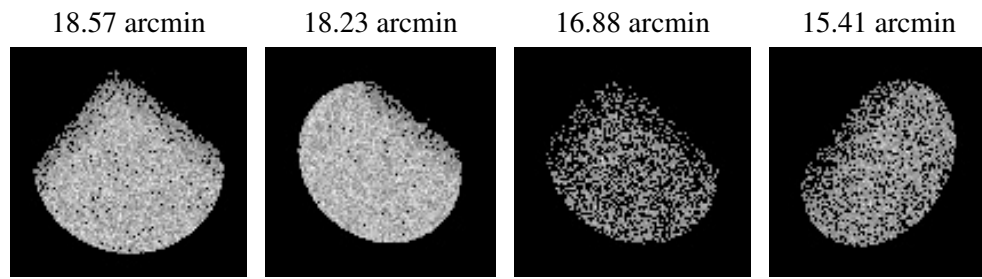
2.5.2 Slot 1



2.5.3 Slot 2



3 Point Sources



A Summary

A.1 Status

V&V Scientist	Beth Sundheim
V&V Date (YYYY-MM-DD)	2006.04.16
V&V Edition	1
V&V Disposition and Status	OK
V&V Charge Time	120.18

A.2 Comments