

V&V Reference Report

L2 ASCDS Version : 7.6.7.1

Observation 4888 - L2 Version 001
Chandra X-Ray Center

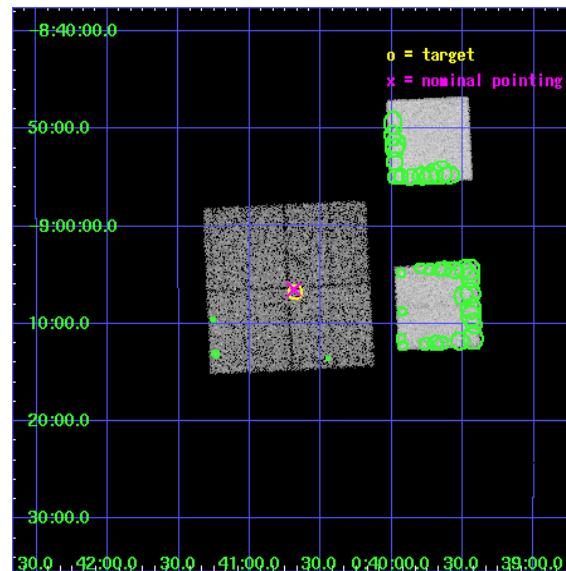
L2 Processing Date : Apr 19 2006

Contents

1	Front	2
2	OBI	3
2.1	OBI	3
2.1.1	Images	3
2.1.2	Bias	3
2.1.3	Parameters	4
2.1.4	Events	4
2.2	Compared Parameters	5
2.3	Aspect	6
2.4	Star Slots	9
2.4.1	Slot 3	9
2.4.2	Slot 4	10
2.4.3	Slot 5	11
2.4.4	Slot 6	12
2.4.5	Slot 7	13
2.5	FID Slots	14
2.5.1	Slot 0	14
2.5.2	Slot 1	15
2.5.3	Slot 2	16
3	Point Sources	17
A	Summary	18
A.1	Status	18
A.2	Comments	18

1 Front

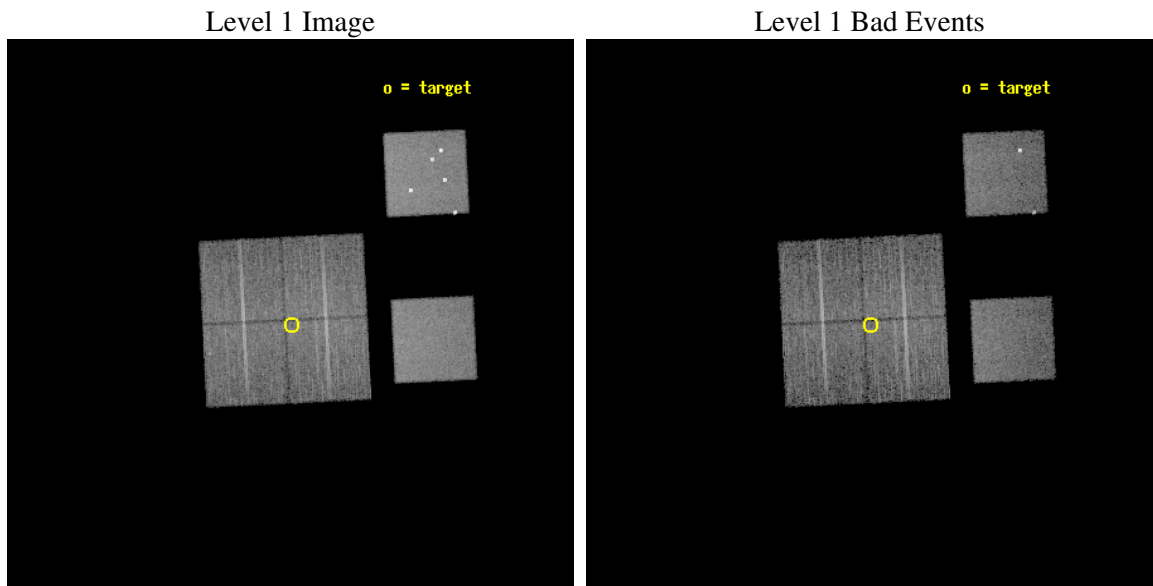
seq_num	700970
obs_id	4888
title	AGN in low-redshift Clusters of Galaxies
observer	Prof. Paul Martini
object	Abell85-P8
dtcycle	0
cycle	P
ra_targ	10.170417
dec_targ	-9.1125
ra_nom	10.172396944993
dec_nom	-9.1083371869259
roll_nom	87.18834019223
revision	3
ontime	9753.599963665
livetime	9630.0940080123
ontime0	9743.876973033
ontime1	9753.599963665
ontime2	9740.6359827518
ontime3	9753.599963665
ontime5	9753.599963665
ontime7	9753.599963665
l2events	112261



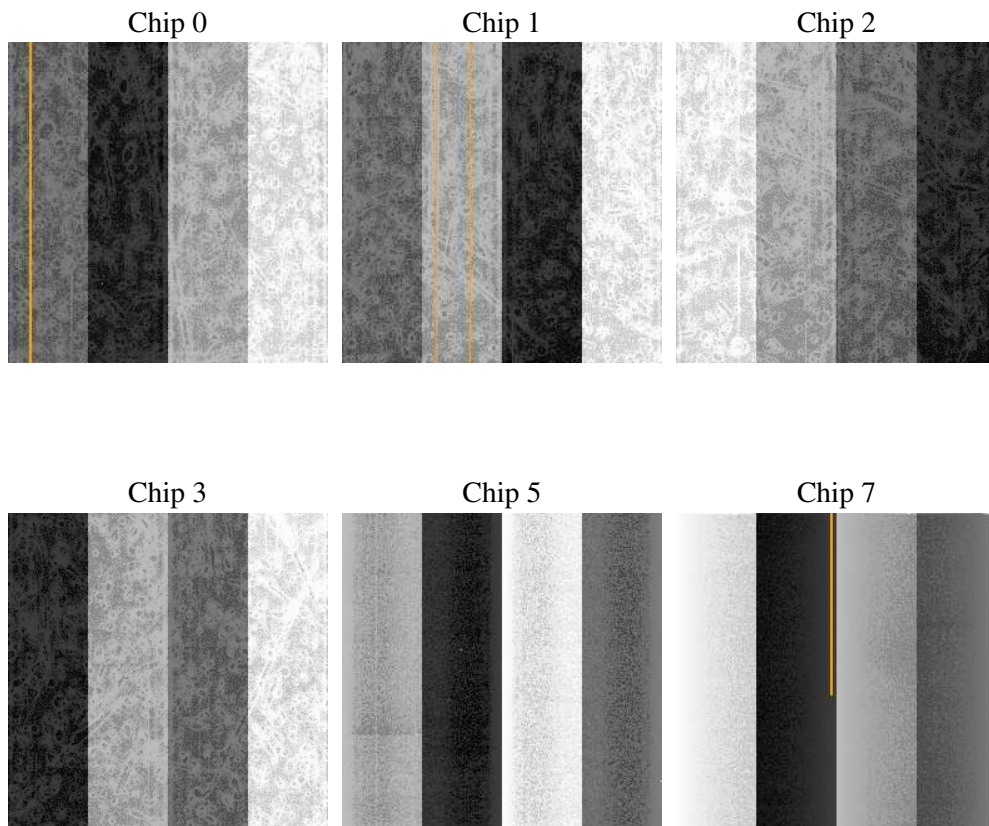
2 OBI

2.1 OBI

2.1.1 Images



2.1.2 Bias



2.1.3 Parameters

obi_num	1
ascdsver	7.6.7.1
caldbver	3.2.1
date	2006-04-19T10:36:39
revision	3

sched_exp_time	10000.000000
ontime	9758.6855047941
ontime0	9748.9625042677
ontime1	9758.6855047941
ontime2	9745.721523881
ontime3	9758.6855047941
ontime5	9758.6855148077
ontime7	9758.6855148077
l1events	500460

2.1.4 Events

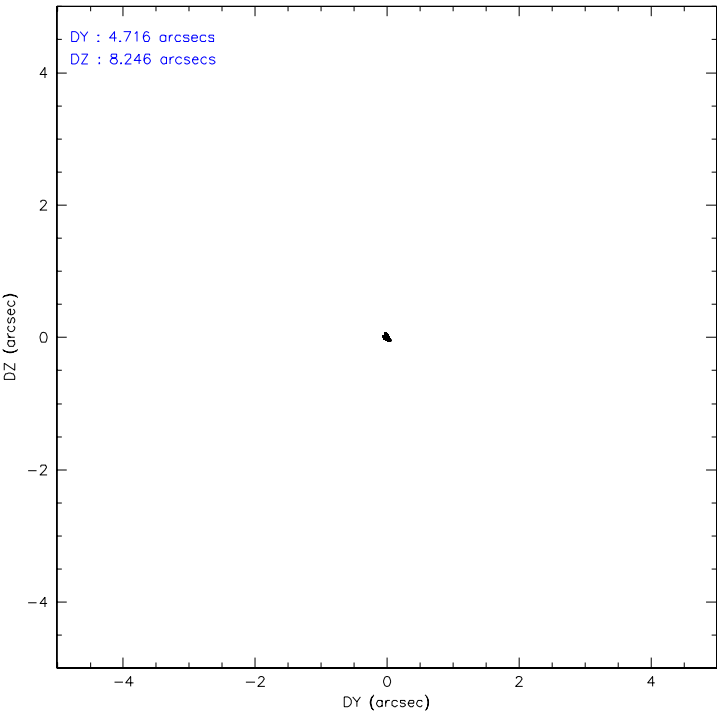
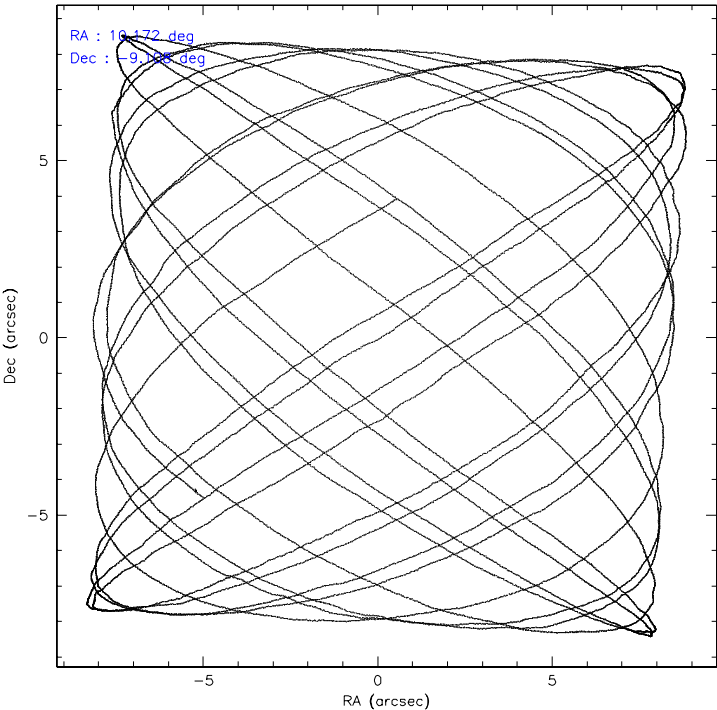
	ccd 0	ccd 1	ccd 2	ccd 3	ccd 5	ccd 7
level 1 events	67507	68057	72044	73738	119723	99391
rejected events	58438	57838	63674	65070	63882	61647
rejected %	86%	84%	88%	88%	53%	62%

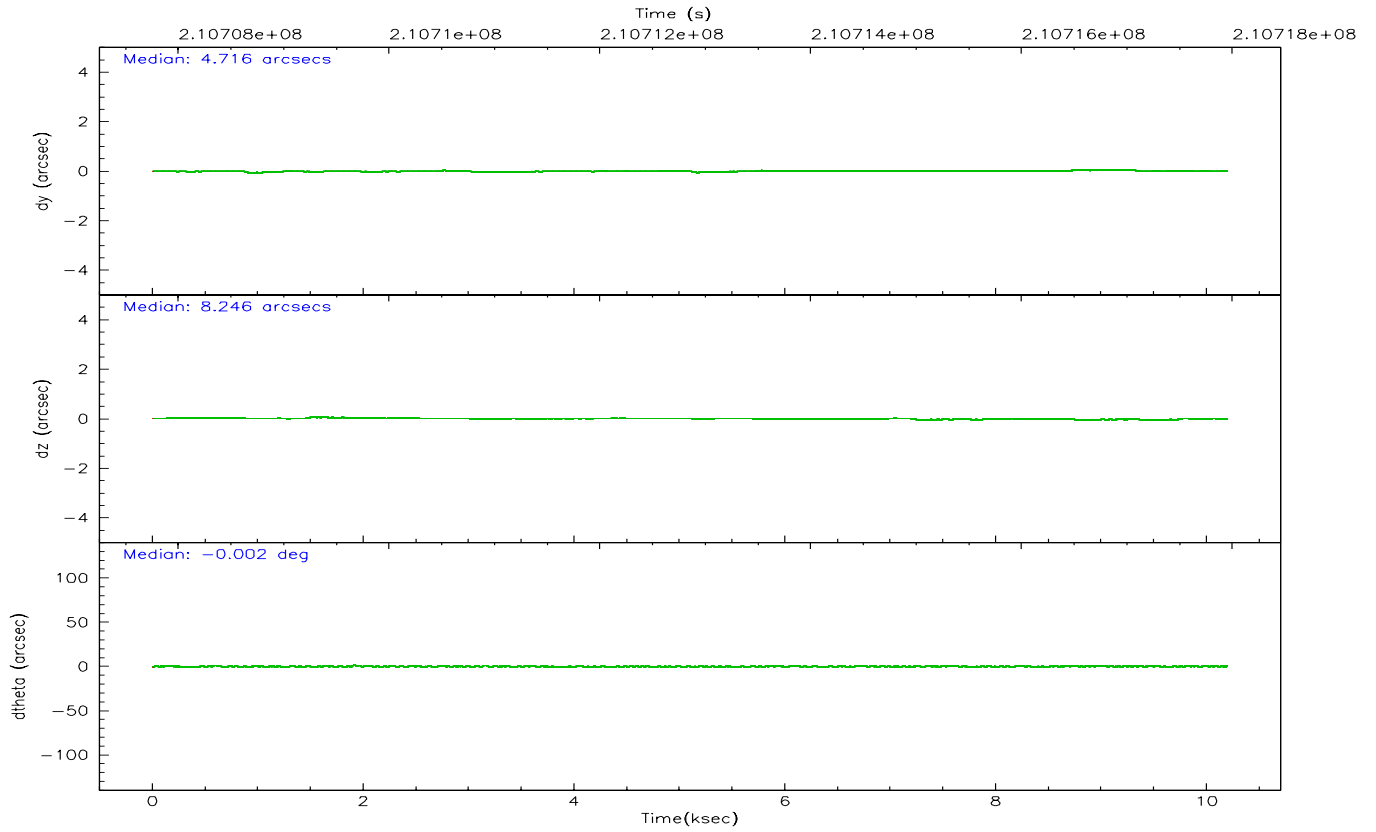
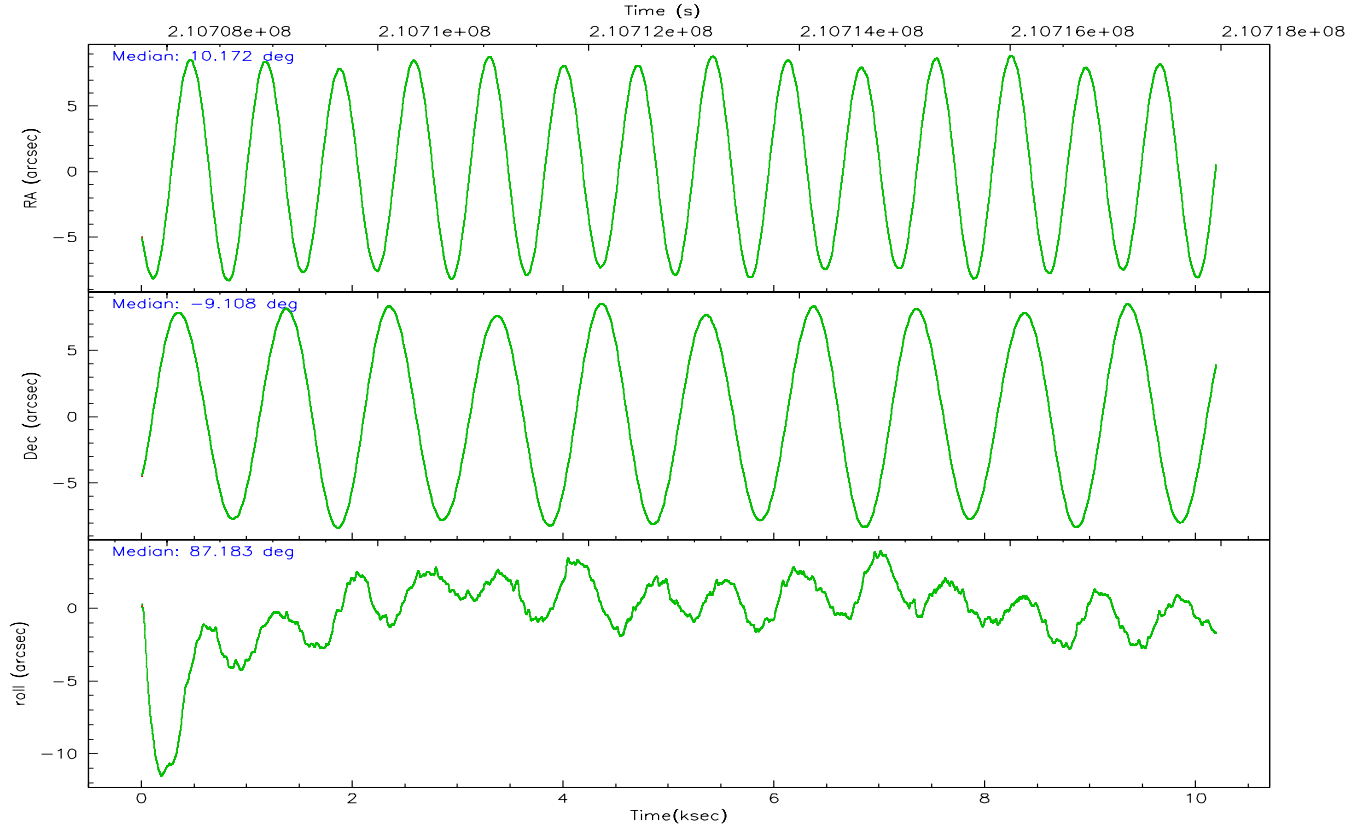
	ccd 0	ccd 1	ccd 2	ccd 3	ccd 5	ccd 7
grade 0 events	3911	4441	3629	3881	10445	2121
	5%	6%	5%	5%	8%	2%
grade 1 events	46	32	39	51	262	68
	0%	0%	0%	0%	0%	0%
grade 2 events	1993	2046	1715	1597	14994	9240
	2%	3%	2%	2%	12%	9%
grade 3 events	893	947	788	831	1287	1823
	1%	1%	1%	1%	1%	1%
grade 4 events	813	944	778	844	1048	1933
	1%	1%	1%	1%	0%	1%
grade 5 events	3172	3039	2890	3398	5618	6587
	4%	4%	4%	4%	4%	6%
grade 6 events	1469	1842	1463	1520	28109	22662
	2%	2%	2%	2%	23%	22%
grade 7 events	55210	54766	60742	61616	57960	54957
	81%	80%	84%	83%	48%	55%

2.2 Compared Parameters

Parameter	Planned	Actual	Parameter	Planned	Actual
Instrument	ACIS	ACIS	Obspar format version number	6	6
Detector	ACIS-012357	ACIS-012357	Obspar file type	PREDICTED	ACTUAL
Grating	NONE	NONE	Obspar update status	NONE	UPDATED
Data mode	VFAINT	VFAINT	On-chip summing requested	N	N
Observation mode	POINTING	POINTING	Subarray requested	NONE	NONE
Pointing RA	10.185227	10.17239694499317	Alternating exposures requested	N	N
Pointing Dec	-9.132629	-9.108337186925894	Primary exposure time	0.000000	3.2
Pointing Roll	86.981678	87.18834019223048			
SIM focus pos (mm)	-0.782348	-0.7809083437167272			
SIM defocus (mm)	0	0.001439871863259334			
SIM translation stage pos (mm)	-233.592463	-233.5874344608287			
SIM translation stage offset (mm)	0	-0.005018542100998502			
Observation start time	210707957.184000	210707581.19147			
Observation start date	2004-09-04T17:58:13	2004-09-04T17:53:01			
Observation end time	210717957.184000	210718832.61697			
Observation end date	2004-09-04T20:44:53	2004-09-04T21:00:32			
Read mode	TIMED	TIMED			

2.3 Aspect



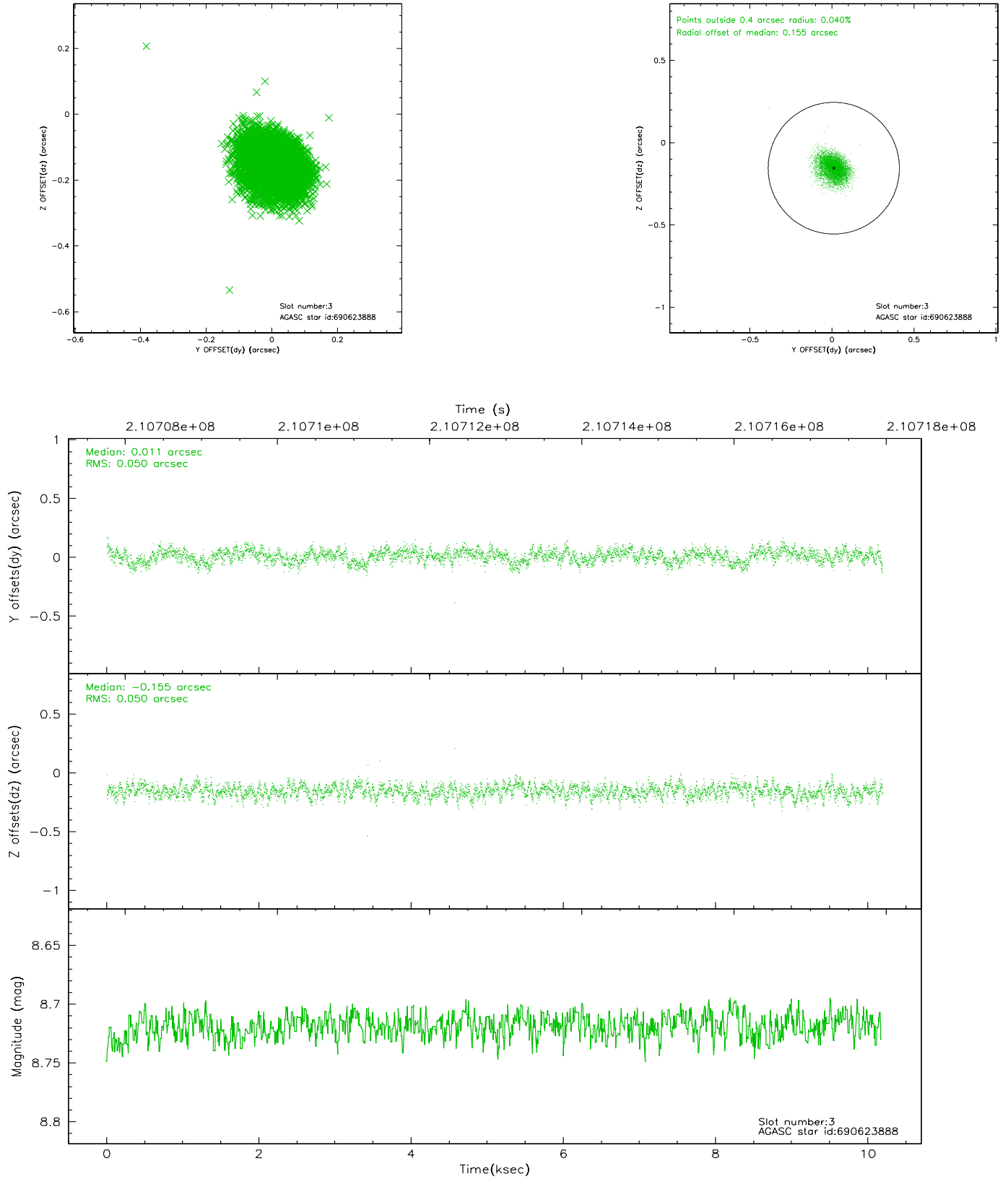


Slot Statistics

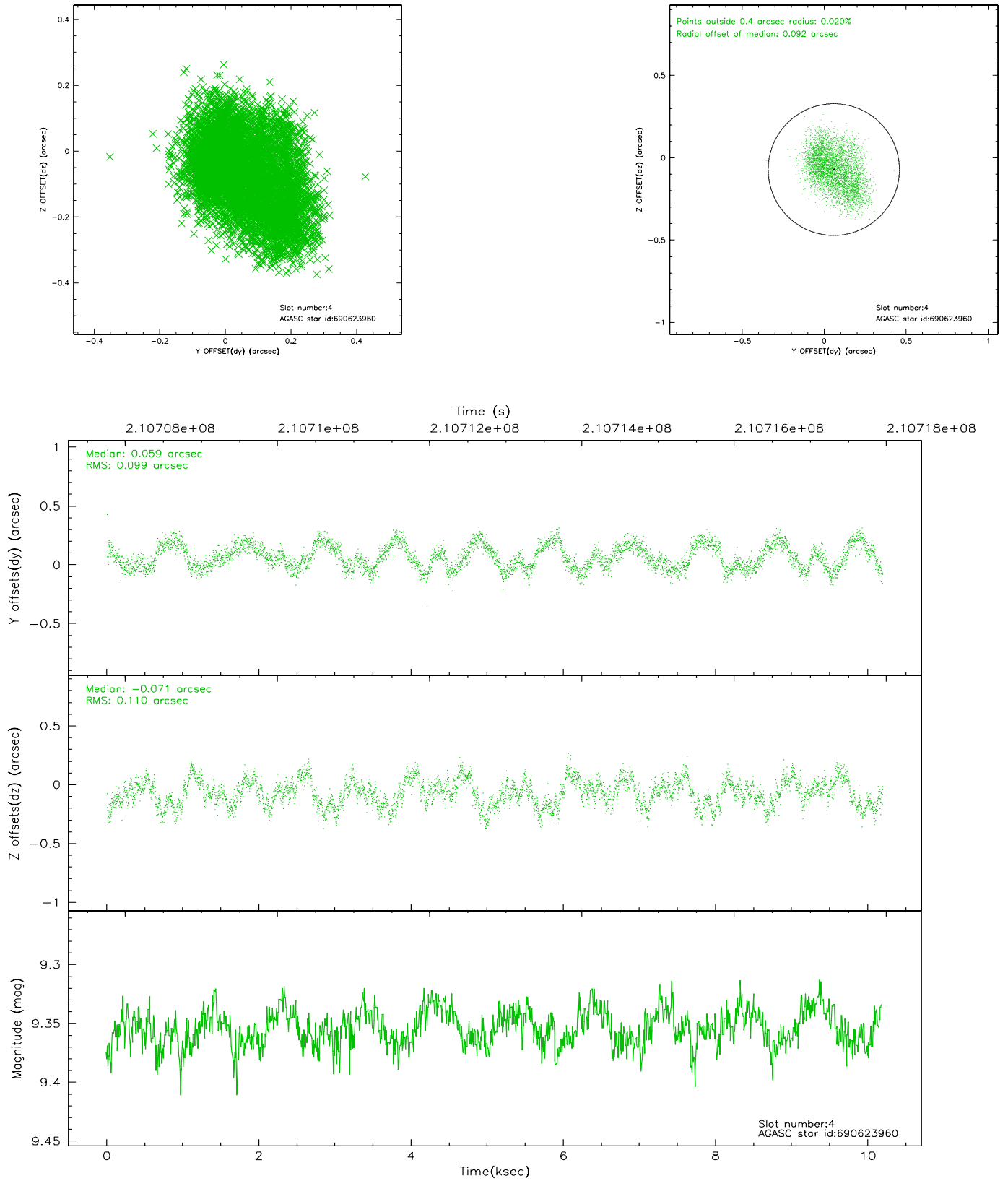
slot	status	id	mag	n_pts	med_dy	med_dz	dr1	dr2	ra	dec	mean_y	mean_z
0	FID	ACIS-I-1	7.24	2486	0.021	0.039	0.006	0.011	0.000000	0.000000	935.05	-831.64
1	FID	ACIS-I-5	7.22	2486	-0.155	0.051	0.006	0.010	0.000000	0.000000	-1812.94	1065.61
2	FID	ACIS-I-6	7.25	2486	0.042	-0.020	0.007	0.011	0.000000	0.000000	400.06	1710.63
3	GUIDE	690623888	8.72	4971	0.011	-0.155	0.075	0.122	10.089843	-9.212040	-303.08	323.32
4	GUIDE	690623960	9.35	4972	0.059	-0.071	0.162	0.246	10.570675	-9.168103	-55.60	-1374.55
5	GUIDE	690625136	9.71	4972	-0.120	0.090	0.153	0.248	10.395190	-8.489346	2352.05	-624.55
6	GUIDE	690625776	9.15	4967	-0.085	0.047	0.100	0.161	10.846019	-9.315741	-535.58	-2380.58
7	GUIDE	690632656	9.26	4964	0.124	0.083	0.091	0.146	10.397747	-9.674983	-1909.95	-856.42

2.4 Star Slots

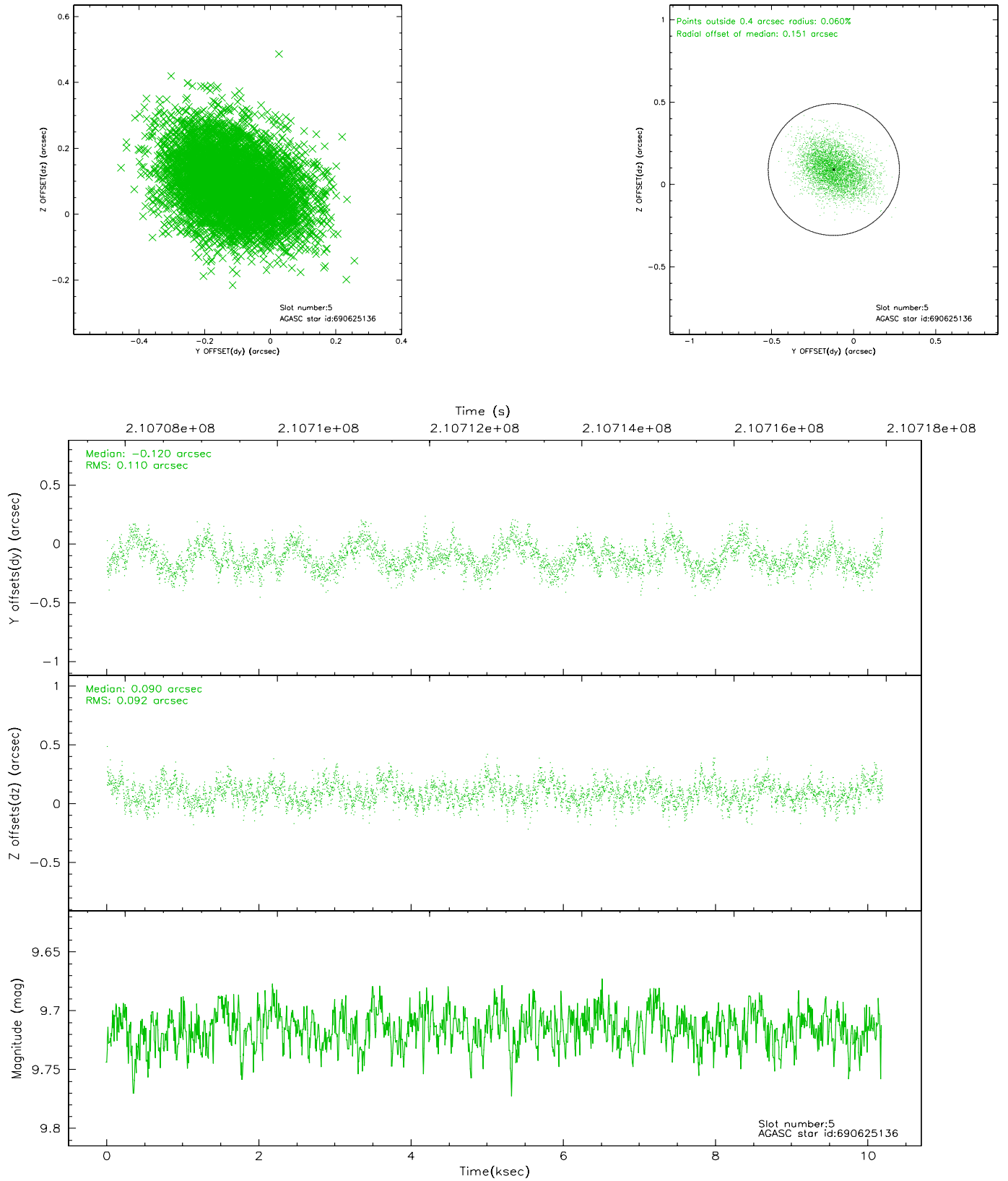
2.4.1 Slot 3



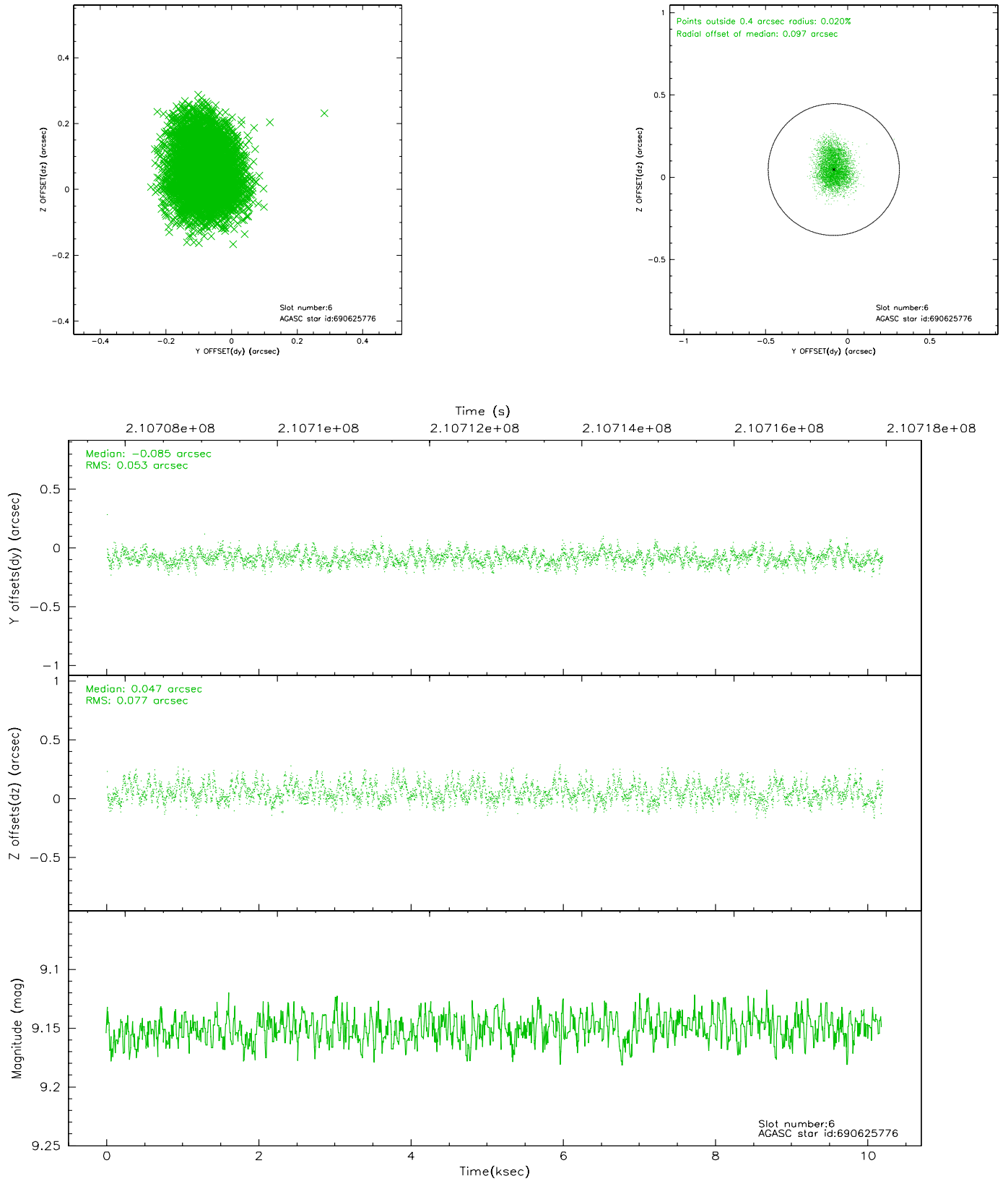
2.4.2 Slot 4



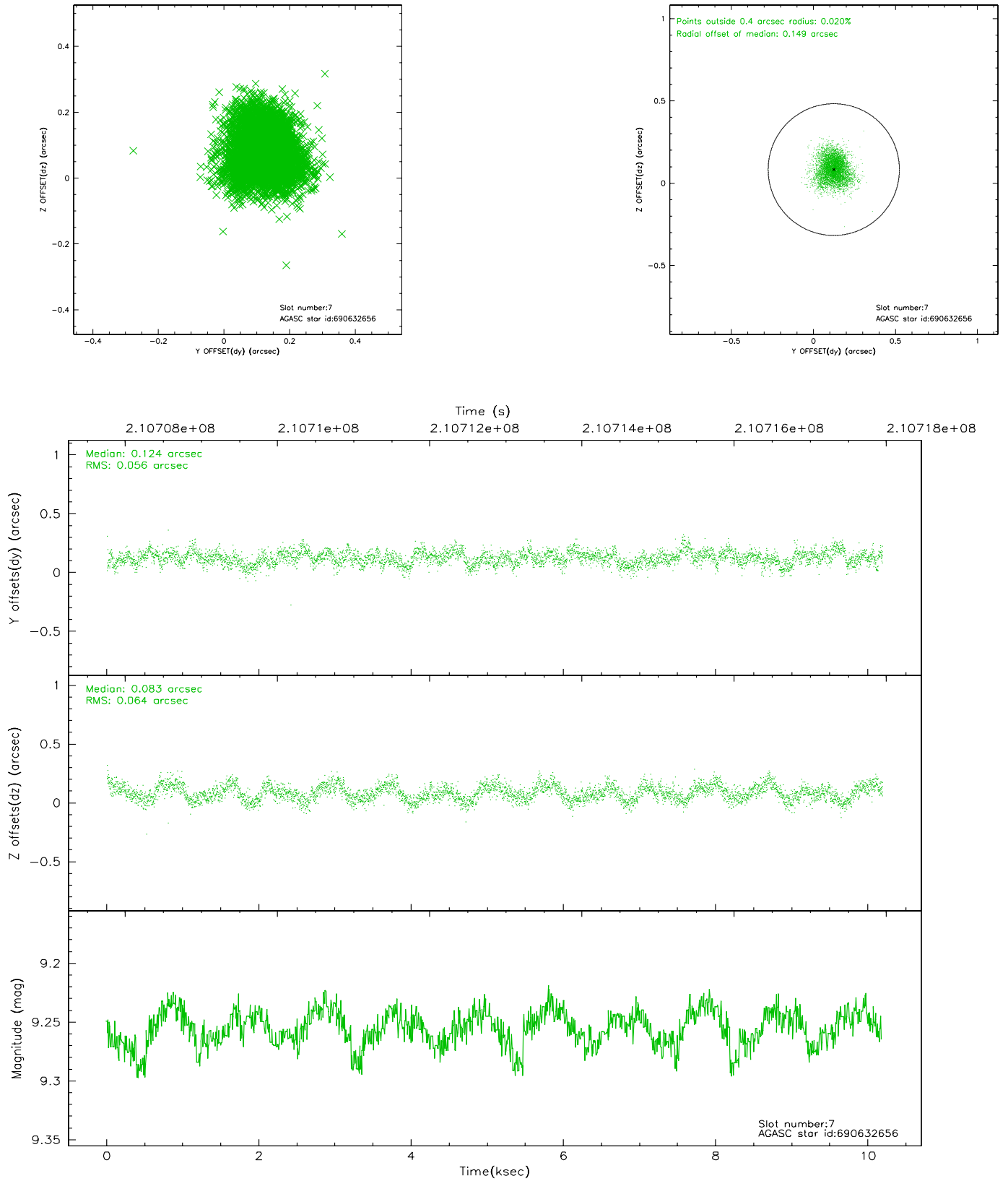
2.4.3 Slot 5



2.4.4 Slot 6

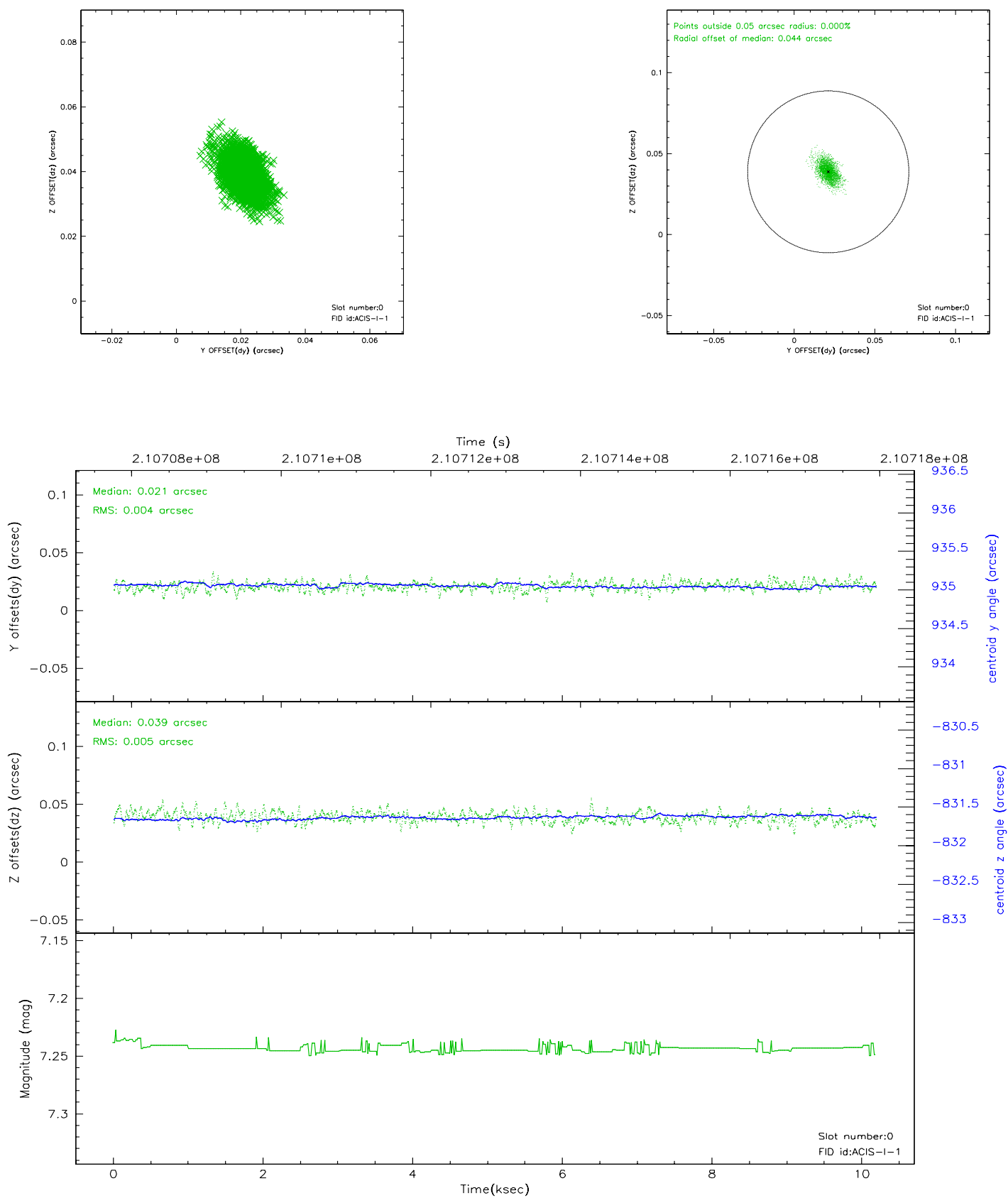


2.4.5 Slot 7

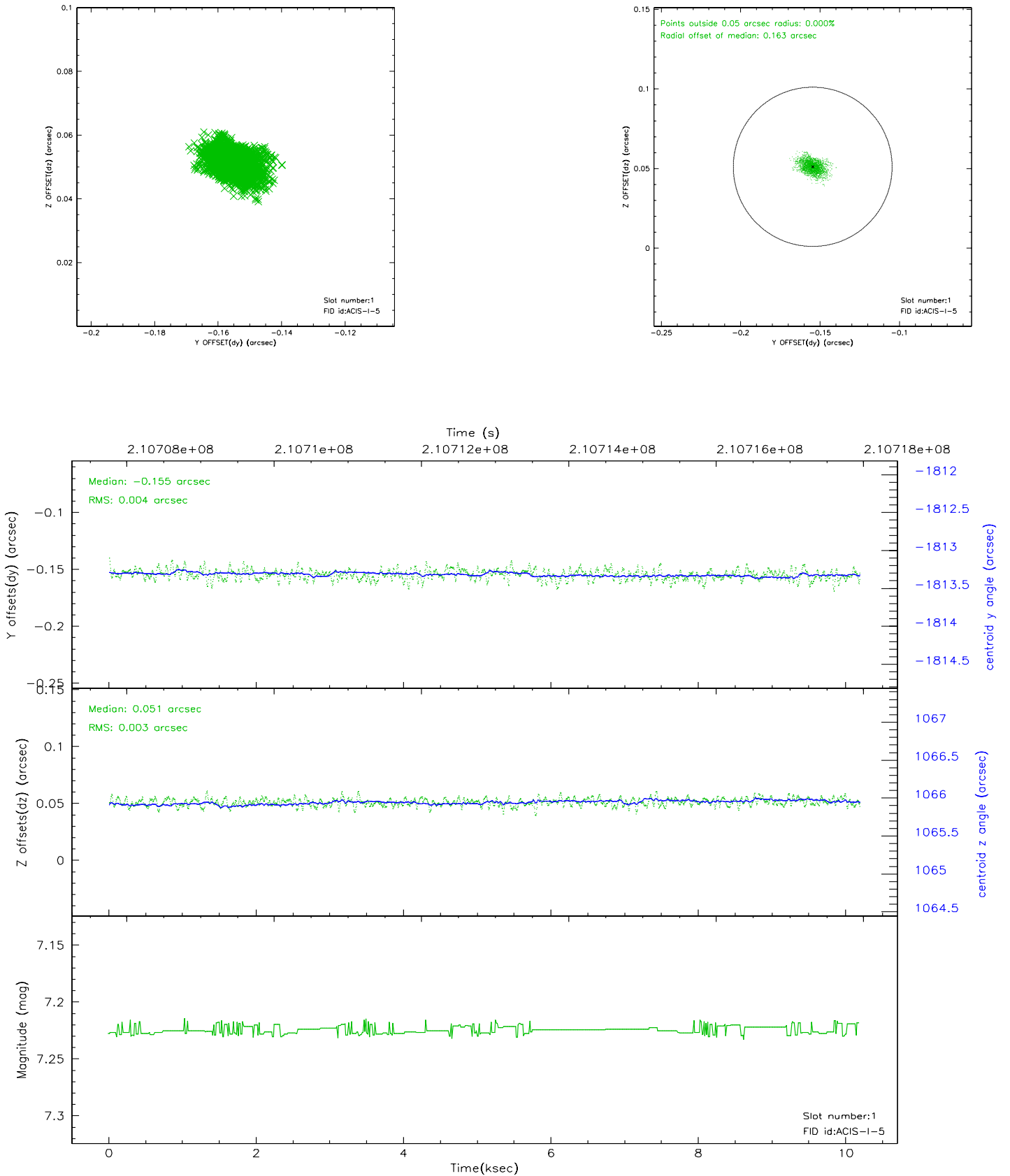


2.5 FID Slots

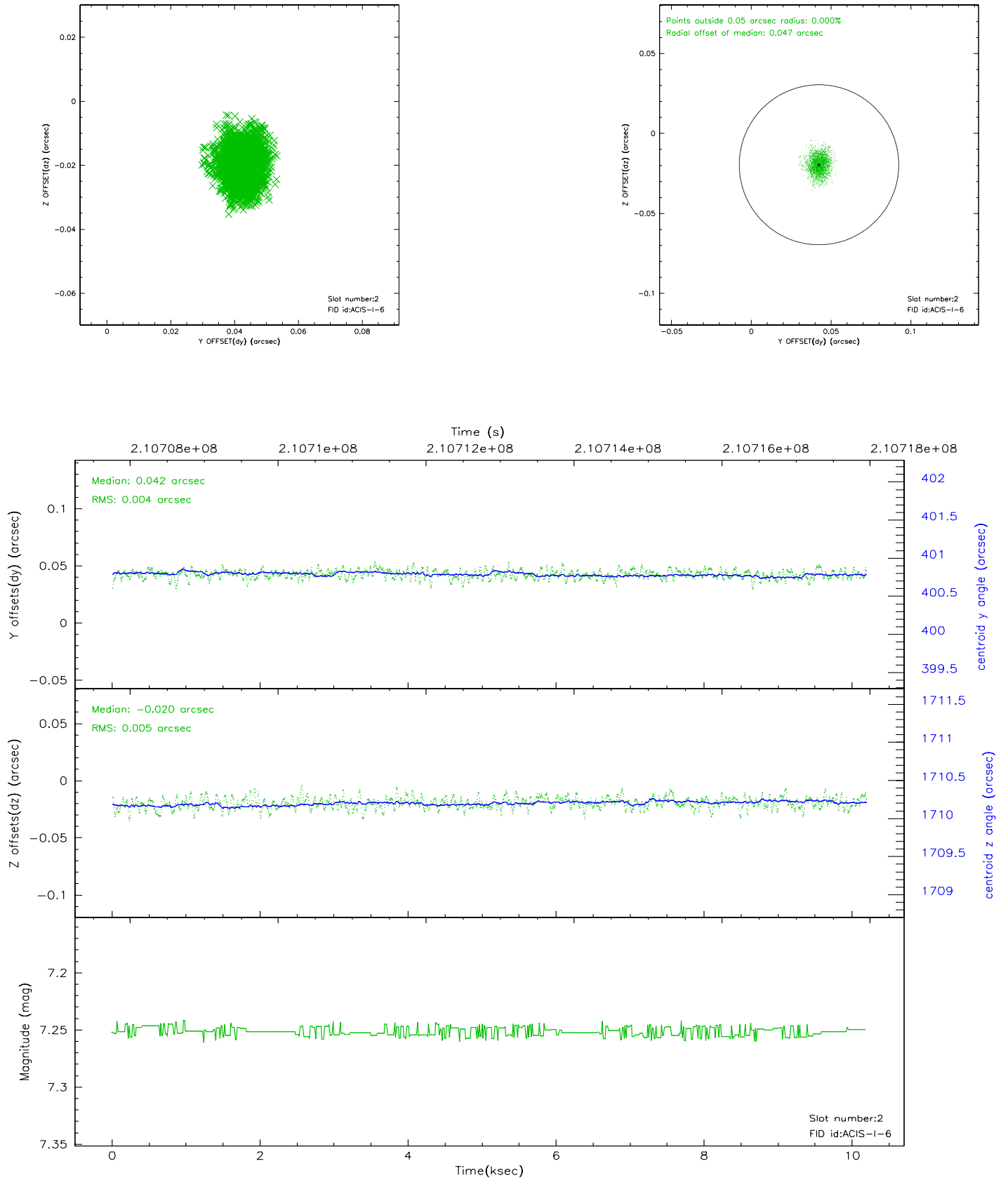
2.5.1 Slot 0



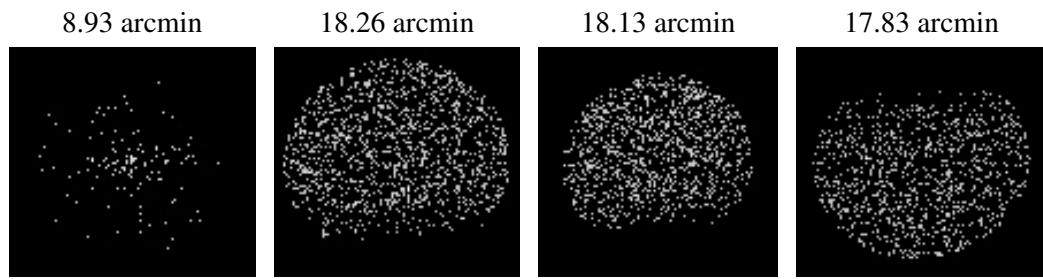
2.5.2 Slot 1



2.5.3 Slot 2



3 Point Sources



A Summary

A.1 Status

V&V Scientist	Beth Sundheim
V&V Date (YYYY-MM-DD)	2006.04.19
V&V Edition	1
V&V Disposition and Status	OK
V&V Charge Time	9.753

A.2 Comments