

# V&V Reference Report

## L2 ASCDS Version : 7.6.7.2

Observation 4798 - L2 Version 001  
Chandra X-Ray Center

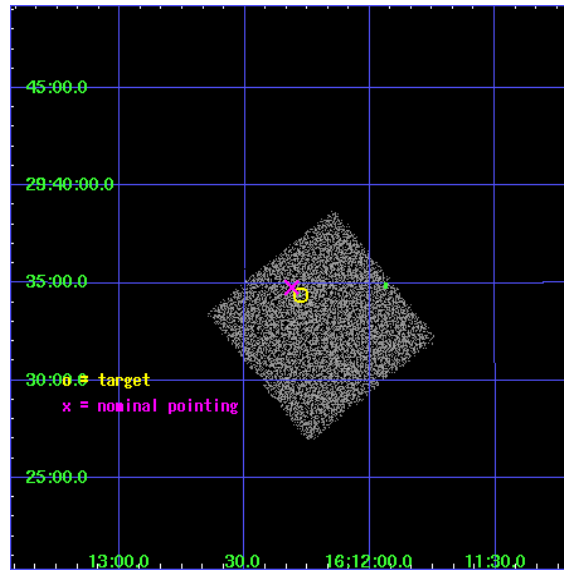
L2 Processing Date : Jun 6 2006

## Contents

<b>1</b>	<b>Front</b>	<b>2</b>
<b>2</b>	<b>OBI</b>	<b>3</b>
2.1	OBI . . . . .	3
2.1.1	Images . . . . .	3
2.1.2	Bias . . . . .	3
2.1.3	Parameters . . . . .	4
2.1.4	Events . . . . .	4
2.2	Compared Parameters . . . . .	5
2.3	Aspect . . . . .	6
2.4	Star Slots . . . . .	9
2.4.1	Slot 3 . . . . .	9
2.4.2	Slot 4 . . . . .	10
2.4.3	Slot 5 . . . . .	11
2.4.4	Slot 6 . . . . .	12
2.4.5	Slot 7 . . . . .	13
2.5	FID Slots . . . . .	14
2.5.1	Slot 0 . . . . .	14
2.5.2	Slot 1 . . . . .	15
2.5.3	Slot 2 . . . . .	16
<b>3</b>	<b>Point Sources</b>	<b>17</b>
<b>A</b>	<b>Summary</b>	<b>18</b>
A.1	Status . . . . .	18
A.2	Comments . . . . .	18

# 1 Front

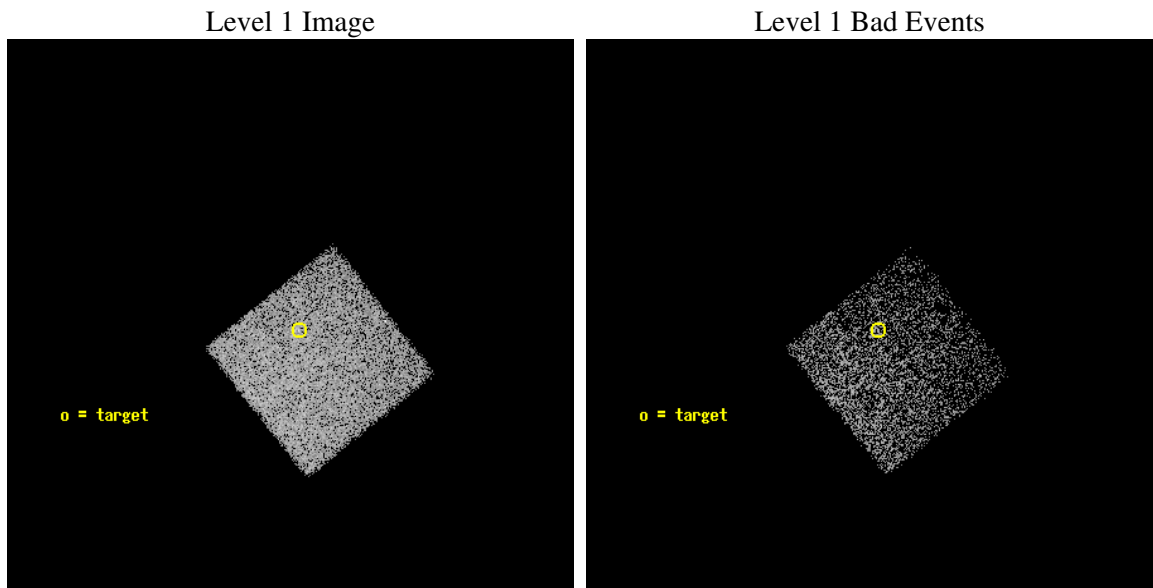
seq_num	700881
obs_id	4798
title	Anchoring the AGN X-ray Luminosity Function
observer	Dr. JOHN SALZER
object	F1610-3900
dtcycle	0
cycle	P
ra_targ	243.069583
dec_targ	29.573111
ra_nom	243.07794564516
dec_nom	29.579657901782
roll_nom	51.443108313756
revision	2
ontime	4446.0
livetime	4385.9995264778
ontime7	4446.0
l2events	13650



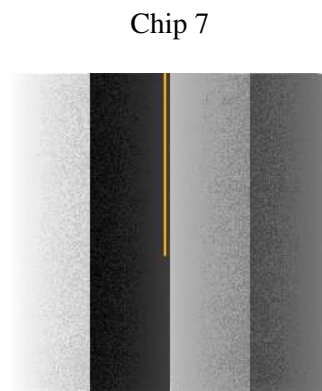
## 2 OBI

### 2.1 OBI

#### 2.1.1 Images



#### 2.1.2 Bias



### 2.1.3 Parameters

obi_num	1
ascdsver	7.6.7.2
caldbver	3.2.2
date	2006-06-06T19:15:39
revision	2

sched_exp_time	3924.000000
ontime	4570.6286893487
ontime7	4570.6286893487
l1events	37054

### 2.1.4 Events

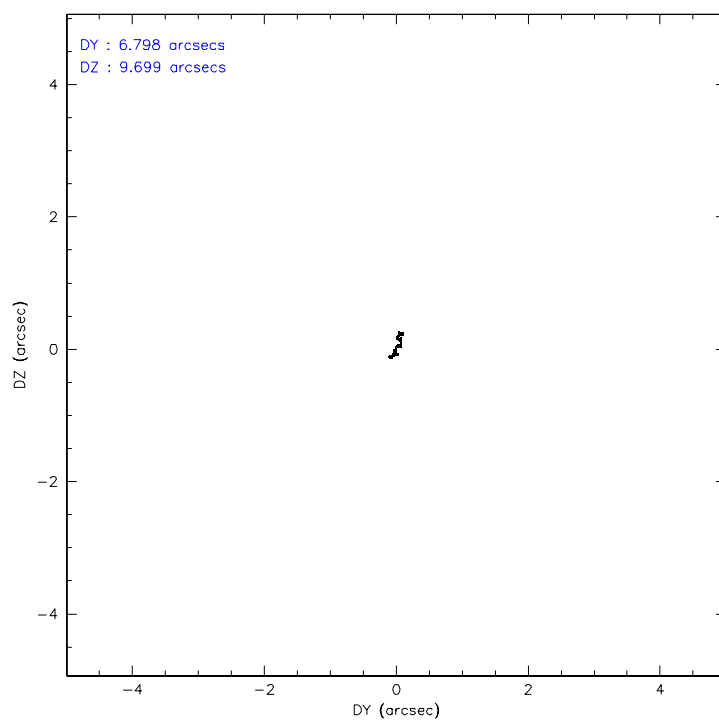
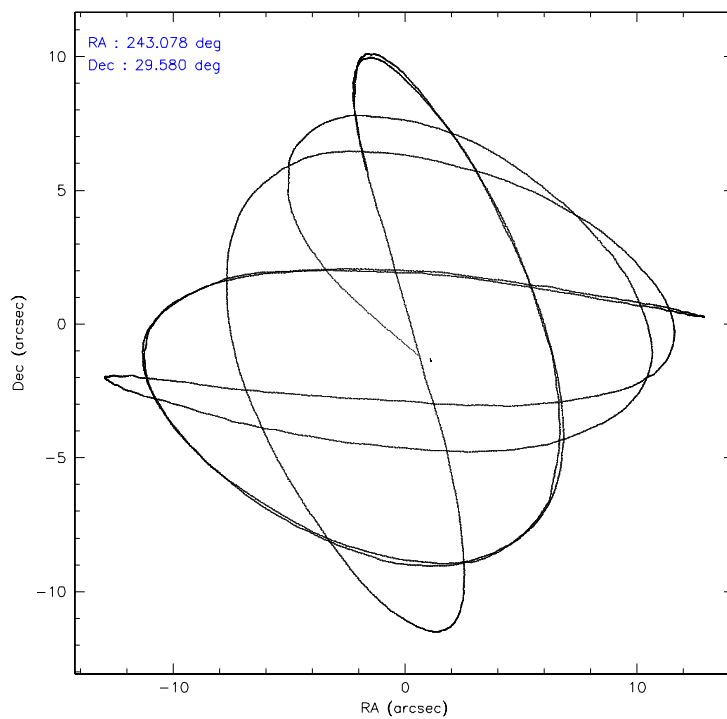
	<b>ccd 7</b>
level 1 events	37054
rejected events	23035
rejected %	62%

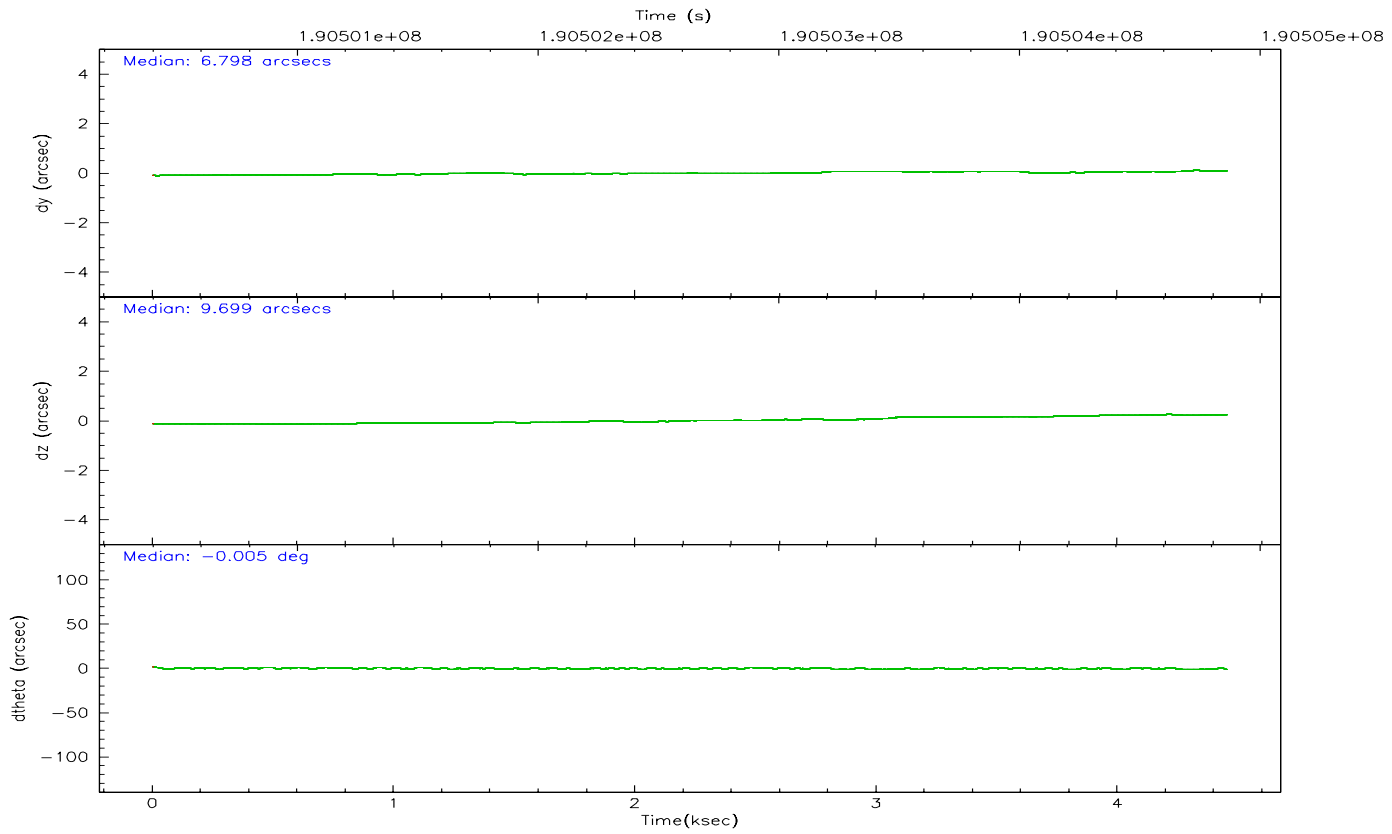
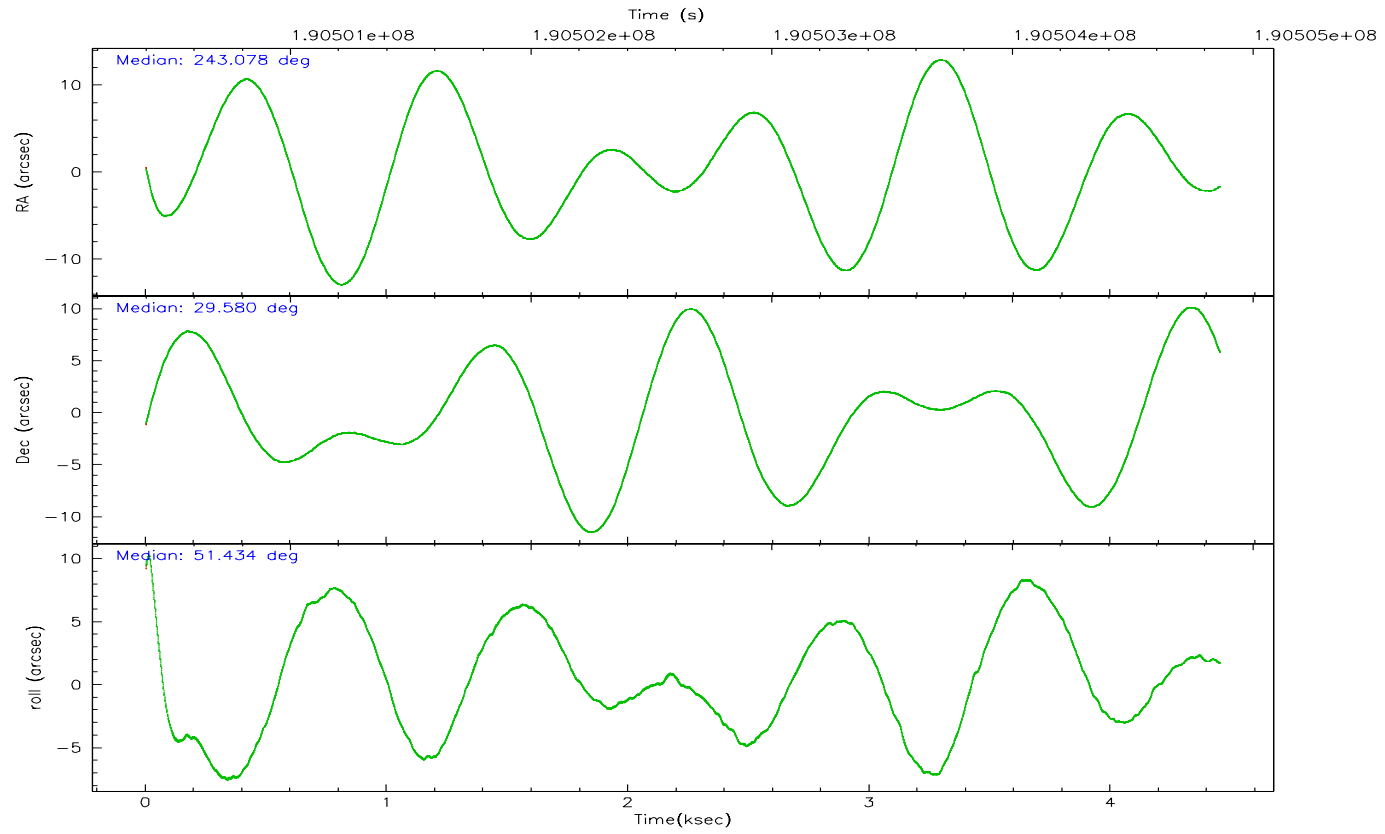
	<b>ccd 7</b>
grade 0 events	993
	2%
grade 1 events	19
	0%
grade 2 events	3555
	9%
grade 3 events	785
	2%
grade 4 events	712
	1%
grade 5 events	2371
	6%
grade 6 events	8340
	22%
grade 7 events	20279
	54%

## 2.2 Compared Parameters

Parameter	Planned	Actual	Parameter	Planned	Actual
Instrument	ACIS	ACIS	Obspar format version number	6	6
Detector	ACIS-7	ACIS-7	Obspar file type	PREDICTED	ACTUAL
Grating	NONE	NONE	Obspar update status	NONE	UPDATED
Data mode	FAINT	FAINT	On-chip summing requested	N	N
Observation mode	POINTING	POINTING	Subarray requested	NONE	NONE
Pointing RA	243.073697	243.0779456451633	Alternating exposures requested	N	N
Pointing Dec	29.552519	29.57965790178246	Primary exposure time	0.000000	3
Pointing Roll	51.288546	51.44310831375638			
SIM focus pos (mm)	-0.684267	-0.6828225247311905			
SIM defocus (mm)	0	0.001444936568705701			
SIM translation stage pos (mm)	-190.132523	-190.1400660498719			
SIM translation stage offset (mm)	0	0.00754346686406393			
Observation start time	190500932.184000	190499800.62508			
Observation start date	2004-01-14T20:54:28	2004-01-14T20:36:40			
Observation end time	190504856.184000	190505260.80032			
Observation end date	2004-01-14T21:59:52	2004-01-14T22:07:40			
Read mode	TIMED	TIMED			

## 2.3 Aspect





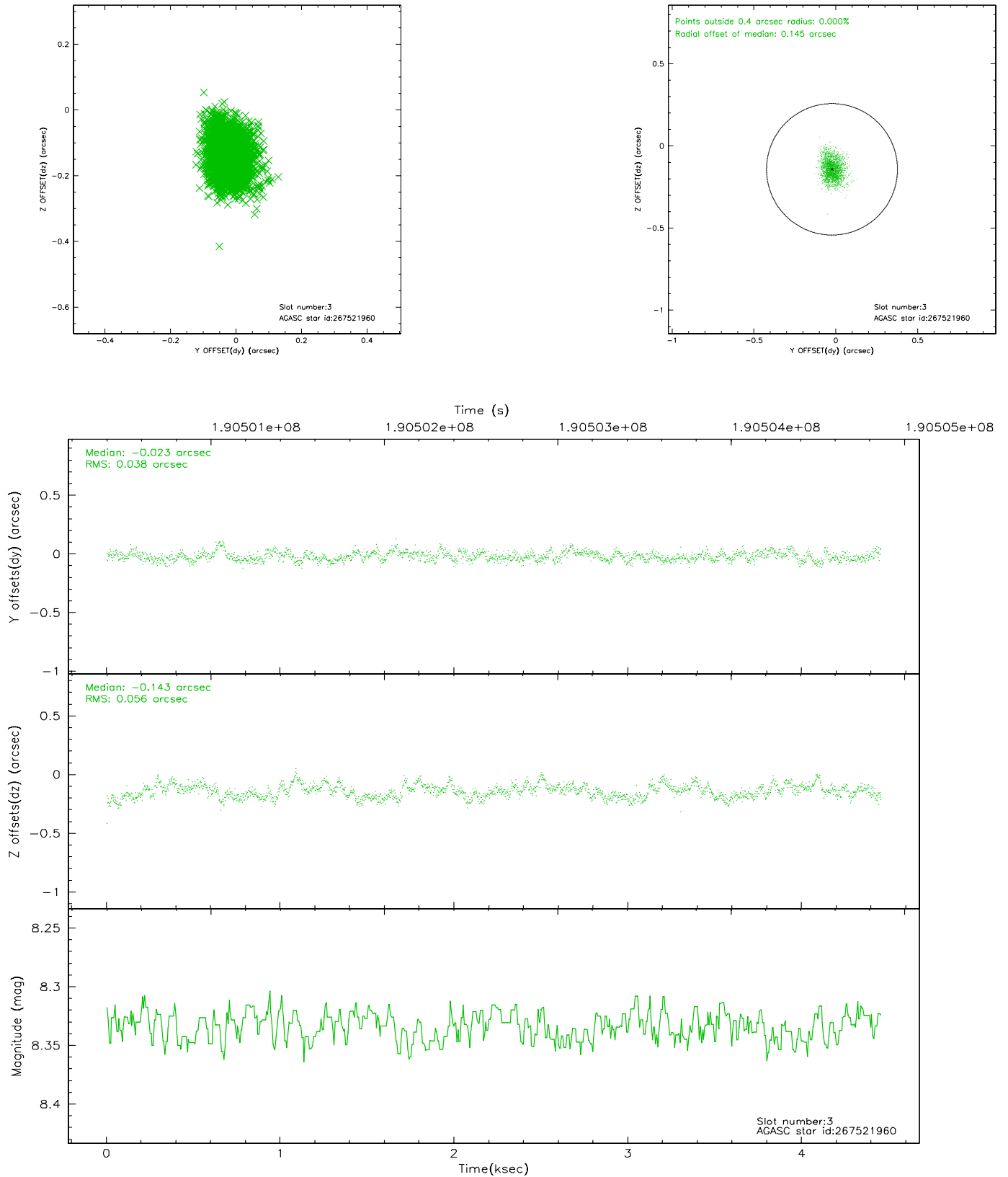
### Slot Statistics

slot	status	id	mag	n_pts	med_dy	med_dz	dr1	dr2	ra	dec	mean_y	mean_z
0	FID	ACIS-S-1	7.18	1087	0.025	-0.001	0.006	0.010	0.000000	0.000000	936.51	-1726.59
1	FID	ACIS-S-2	7.10	1087	-0.036	0.000	0.007	0.011	0.000000	0.000000	-758.68	-1732.57
2	FID	ACIS-S-5	7.23	1086	-0.014	0.007	0.006	0.010	0.000000	0.000000	-1813.30	169.54
3	GUIDE	267521960	8.33	2173	-0.023	-0.143	0.071	0.120	242.420345	29.850672	-434.47	2266.26
4	GUIDE	267523592	9.53	2173	0.212	0.013	0.097	0.153	242.254690	29.461954	-1853.33	1805.62
5	GUIDE	269229312	9.03	2173	-0.138	0.241	0.087	0.138	243.759306	29.395270	907.12	-2027.09
6	GUIDE	338184656	9.23	2173	-0.014	0.078	0.075	0.122	243.459631	30.060095	2179.49	204.80
7	GUIDE	267525704	7.83	2171	-0.036	-0.189	0.063	0.099	242.367846	29.849700	-538.11	2392.81

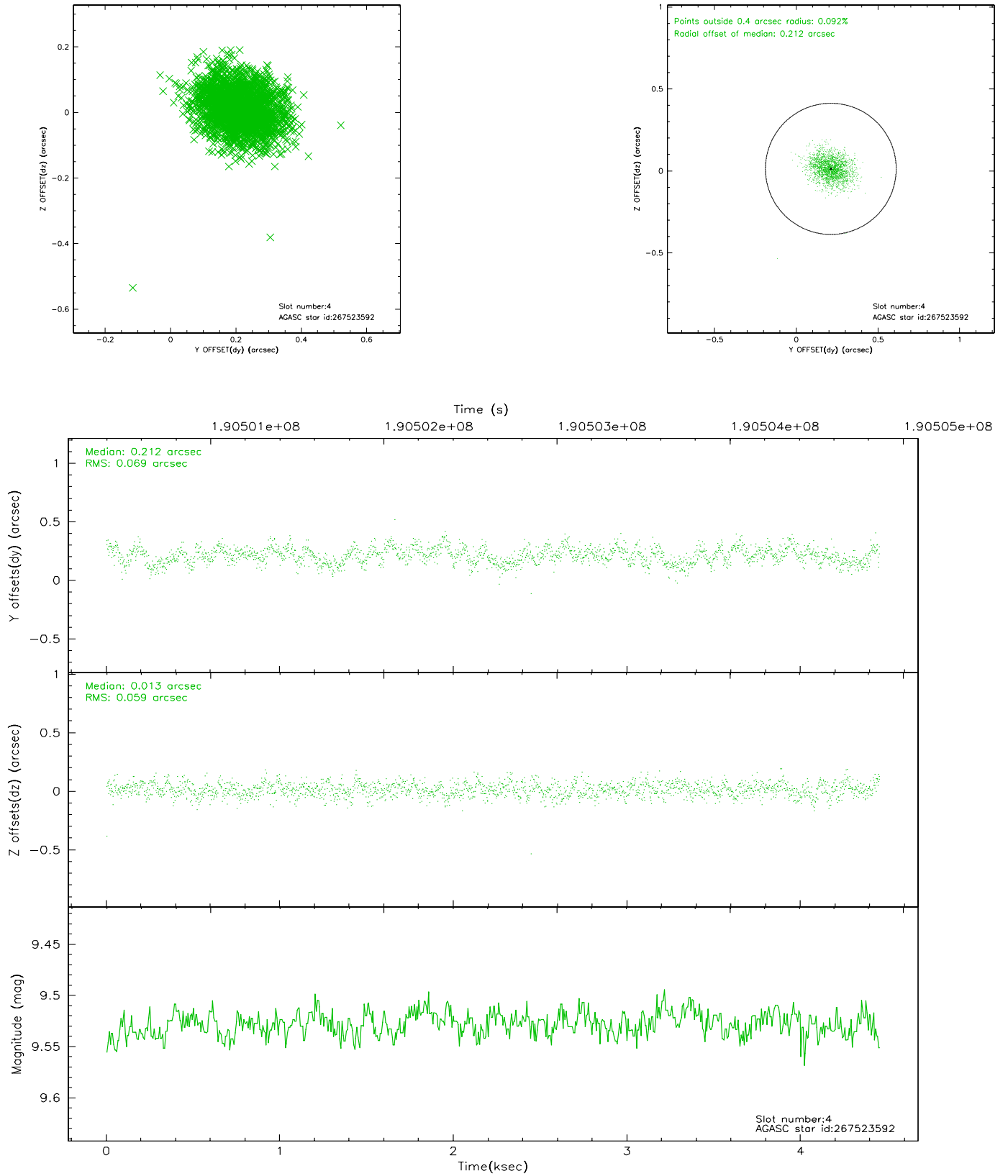


## 2.4 Star Slots

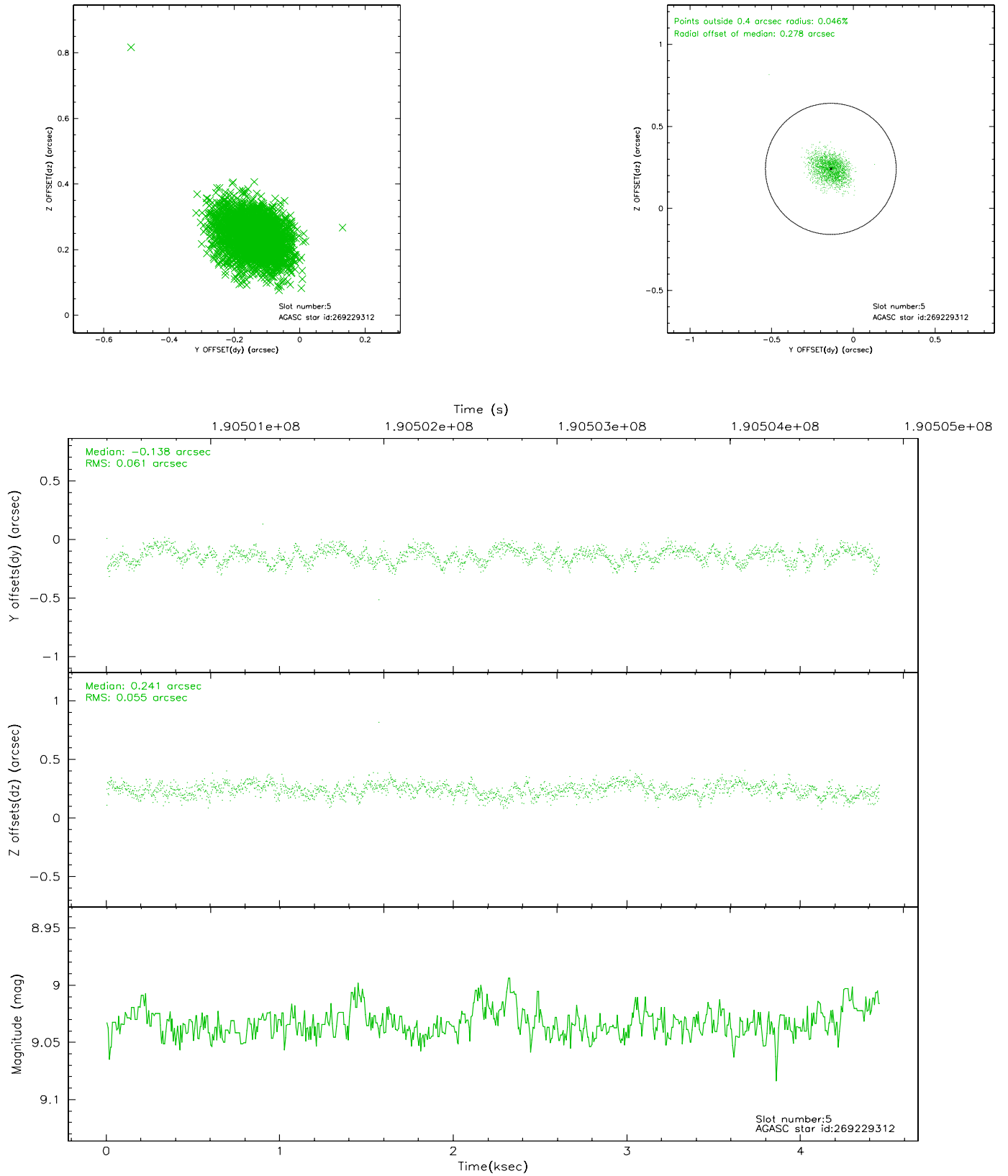
### 2.4.1 Slot 3



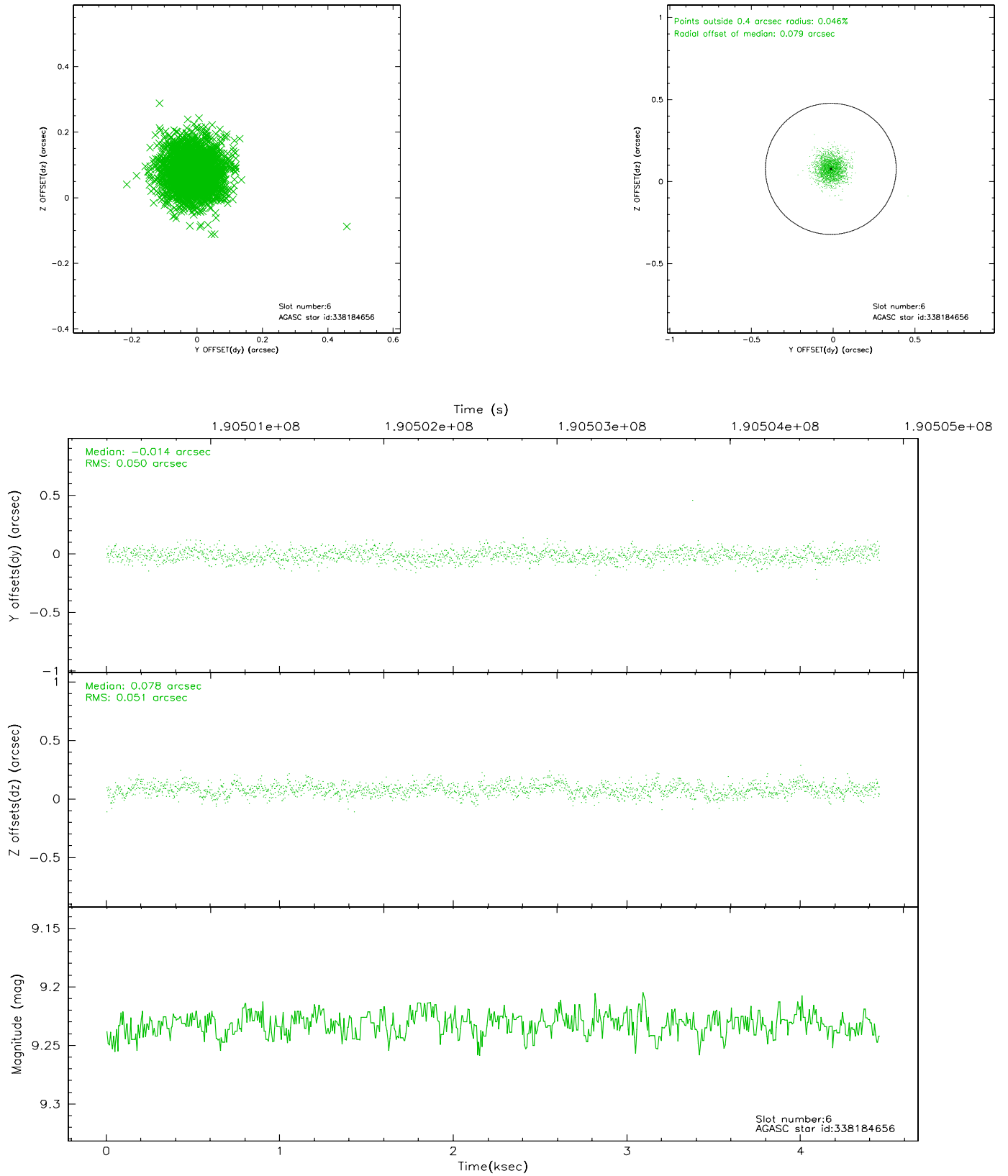
## 2.4.2 Slot 4



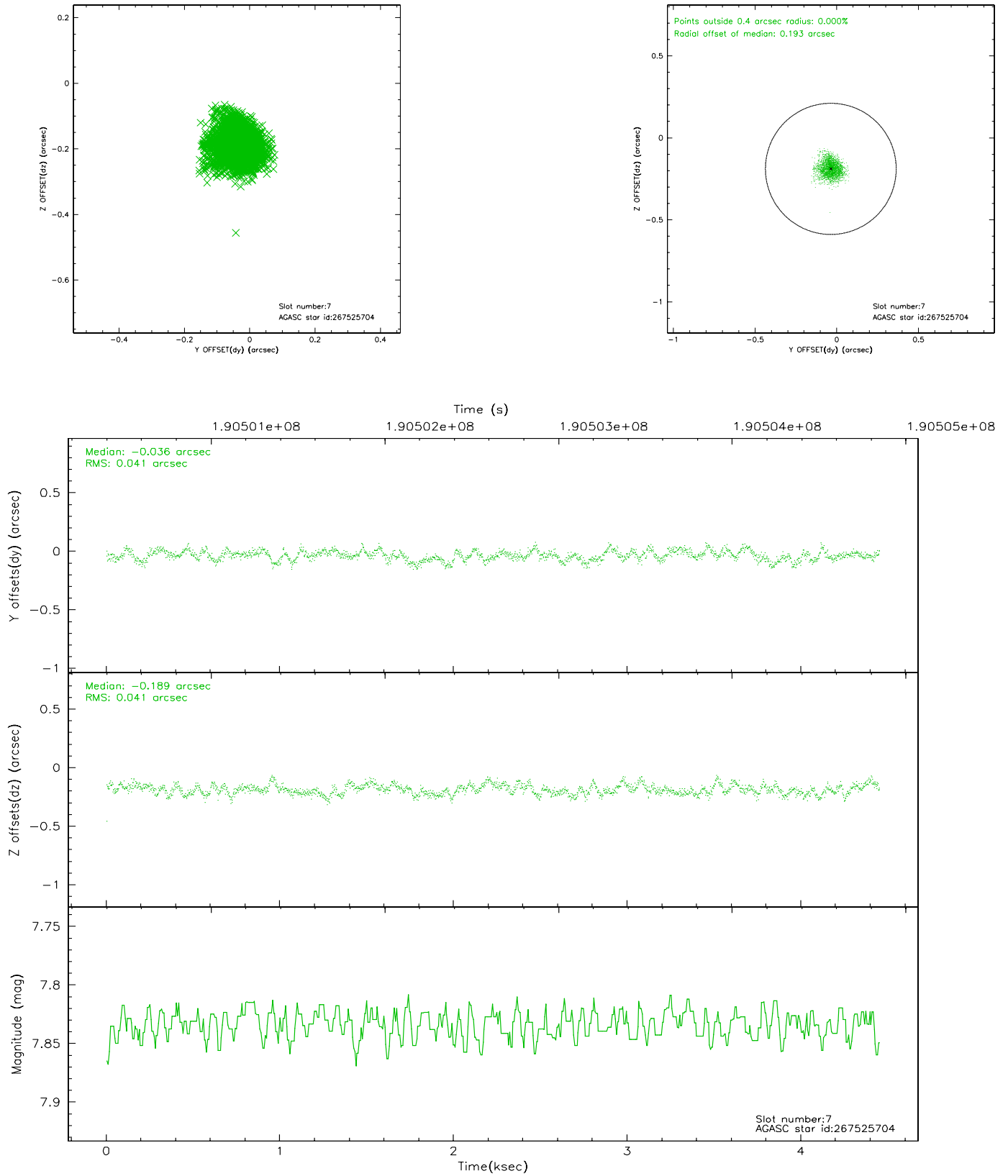
### 2.4.3 Slot 5



## 2.4.4 Slot 6

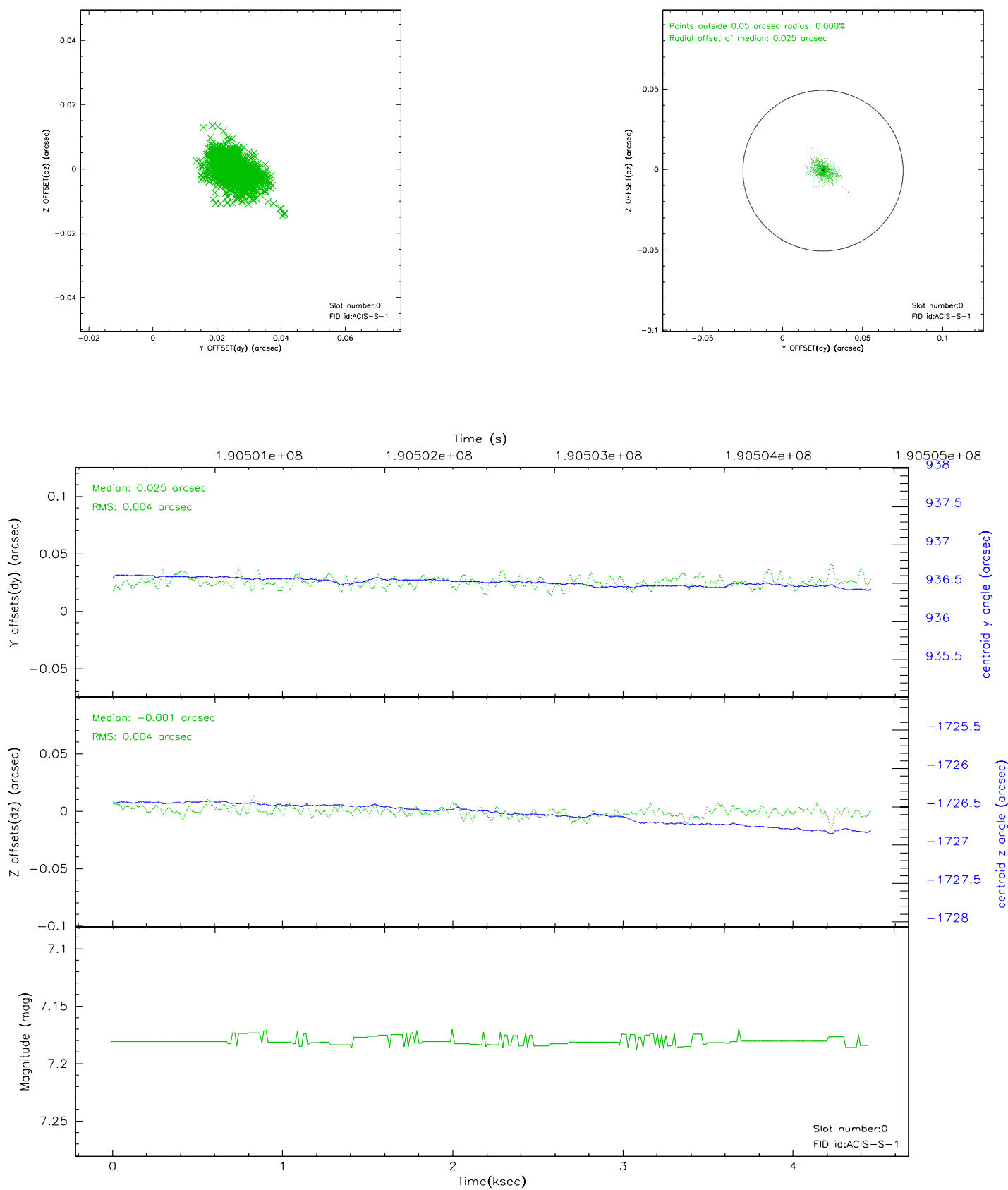


## 2.4.5 Slot 7

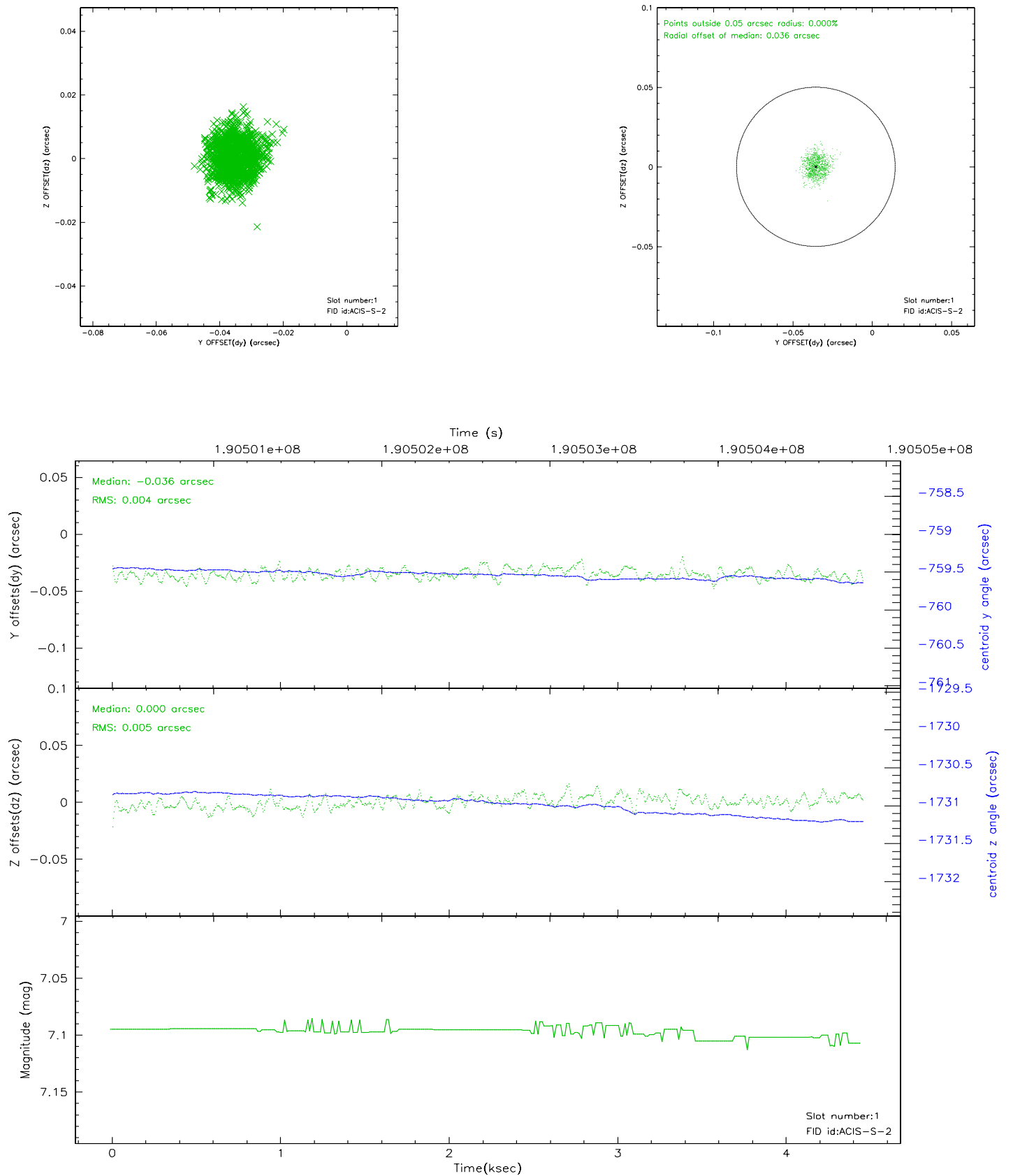


## 2.5 FID Slots

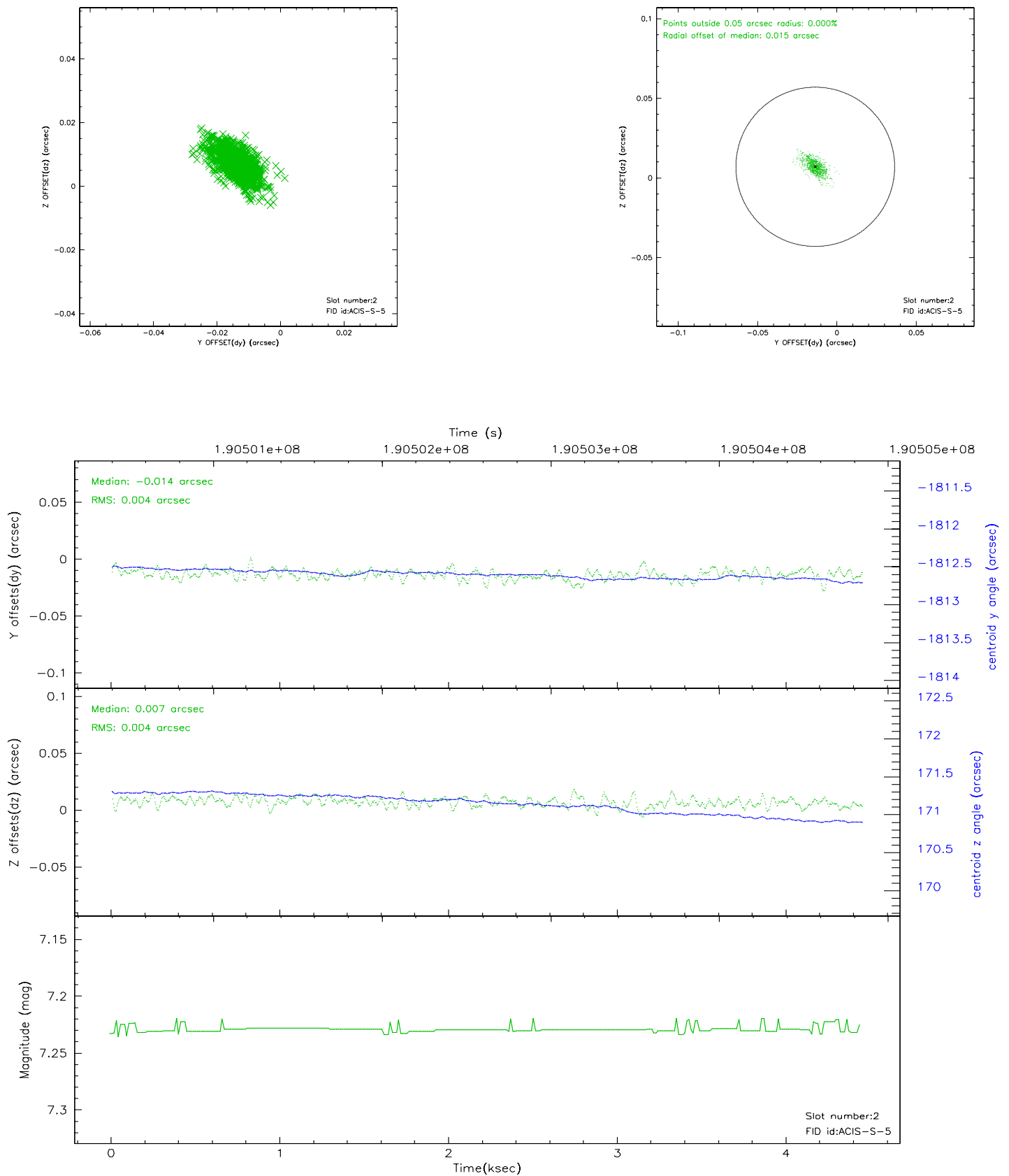
### 2.5.1 Slot 0



## 2.5.2 Slot 1



### 2.5.3 Slot 2





### 3 Point Sources

## A Summary

### A.1 Status

V&V Scientist	Beth Sundheim
V&V Date (YYYY-MM-DD)	2006.06.07
V&V Edition	1
V&V Disposition and Status	OK
V&V Charge Time	4.446

### A.2 Comments