

V&V Reference Report

L2 ASCDS Version : 7.6.7.2

Observation 4758 - L2 Version 001
Chandra X-Ray Center

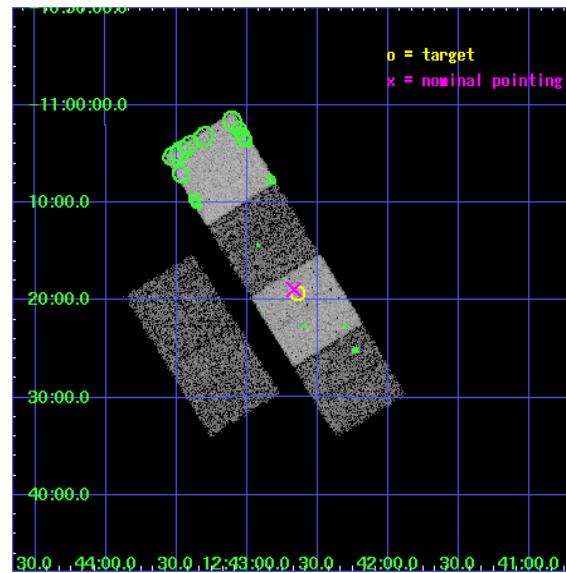
L2 Processing Date : May 31 2006

Contents

1	Front	2
2	OBI	3
2.1	OBI	3
2.1.1	Images	3
2.1.2	Bias	3
2.1.3	Parameters	4
2.1.4	Events	4
2.2	Compared Parameters	5
2.3	Aspect	6
2.4	Star Slots	9
2.4.1	Slot 3	9
2.4.2	Slot 4	10
2.4.3	Slot 5	11
2.4.4	Slot 6	12
2.4.5	Slot 7	13
2.5	FID Slots	14
2.5.1	Slot 0	14
2.5.2	Slot 1	15
2.5.3	Slot 2	16
3	Point Sources	17
A	Summary	18
A.1	Status	18
A.2	Comments	18

1 Front

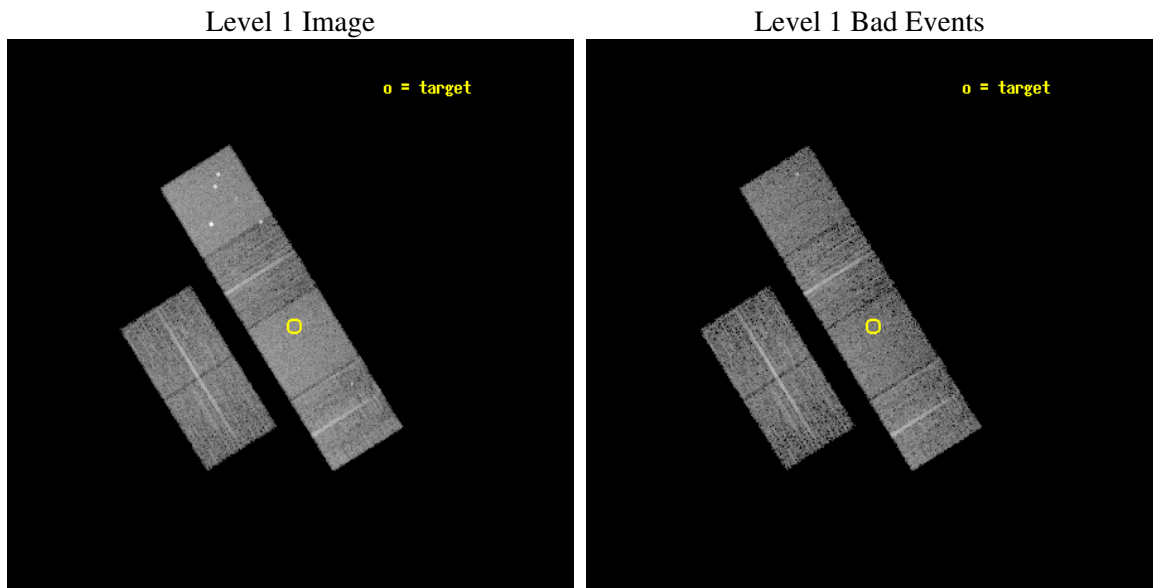
seq_num	700844
obs_id	4758
title	Chandra follow-up of giant-amplitude X-ray flares
observer	Dr. Peter Predehl
object	RXJ1242-1119
dtcycle	0
cycle	P
ra_targ	190.660417
dec_targ	-11.3225
ra_nom	190.66696626867
dec_nom	-11.315330516789
roll_nom	58.146485687753
revision	2
ontime	6959.999974072
livetime	6871.8682635914
ontime2	6959.999974072
ontime3	6959.999974072
ontime5	6959.999974072
ontime6	6959.999974072
ontime7	6959.999974072
ontime8	6959.999974072
l2events	70674



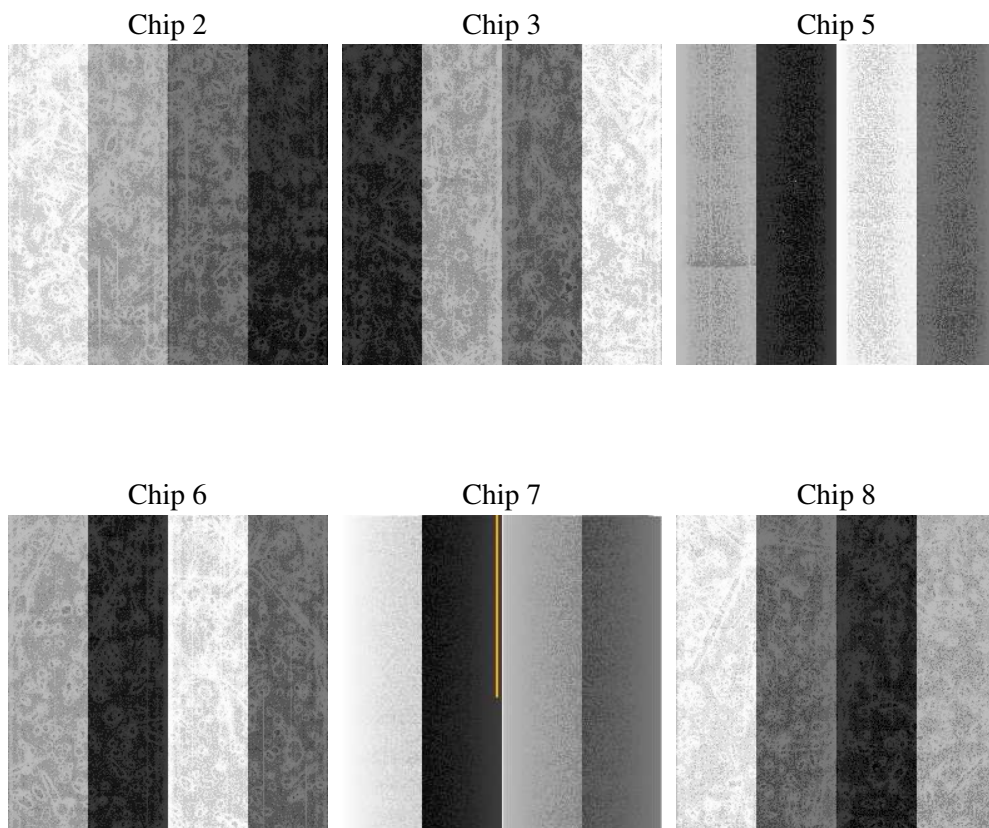
2 OBI

2.1 OBI

2.1.1 Images



2.1.2 Bias



2.1.3 Parameters

obi_num	0
ascdsver	7.6.7.2
caldbver	3.2.2
date	2006-05-31T07:31:24
revision	2

sched_exp_time	7000.000000
ontime	6964.9339652061
ontime2	6964.9339652061
ontime3	6964.9339652061
ontime5	6964.9339652061
ontime6	6964.9339652061
ontime7	6964.9339652061
ontime8	6964.9339652061
l1events	326304

2.1.4 Events

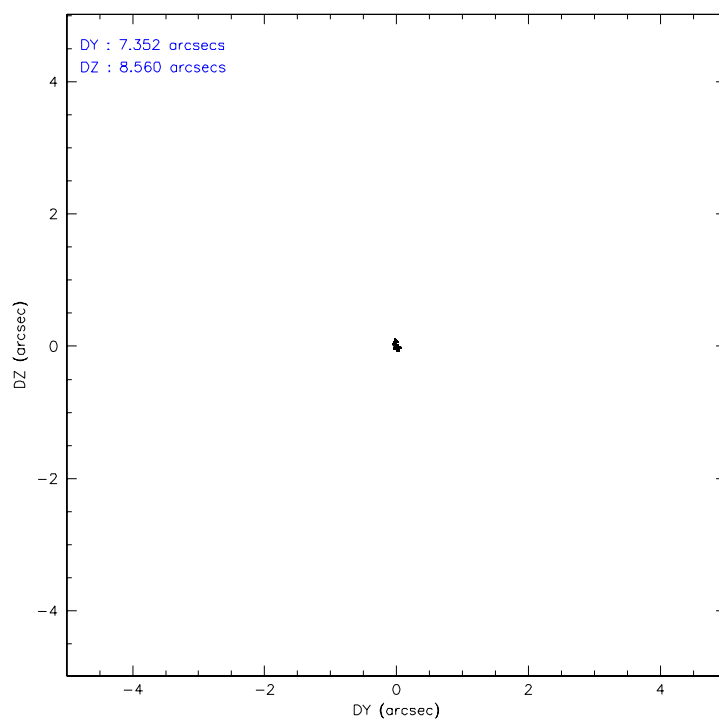
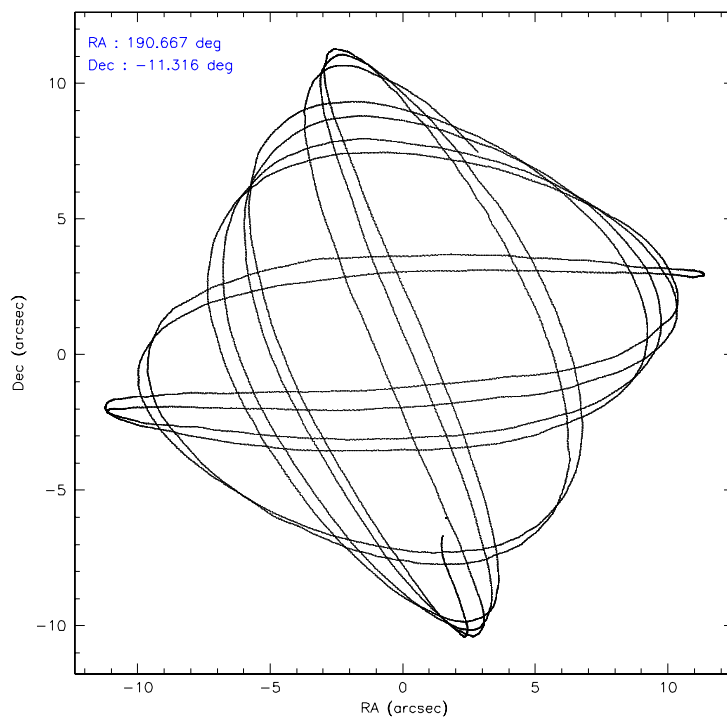
	ccd 2	ccd 3	ccd 5	ccd 6	ccd 7	ccd 8
level 1 events	45787	43702	71090	46310	61878	57537
rejected events	40224	38193	38783	40785	38488	45107
rejected %	87%	87%	54%	88%	62%	78%

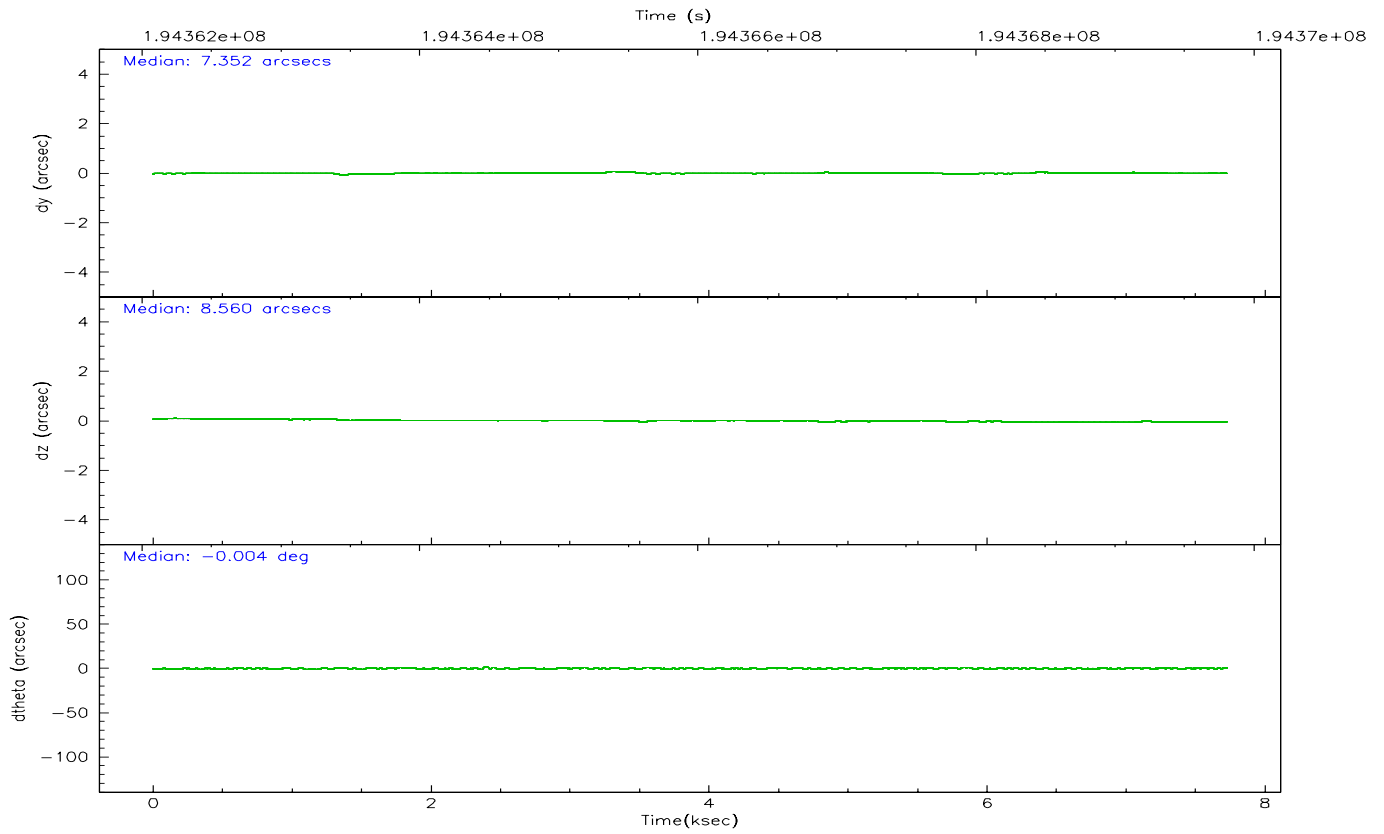
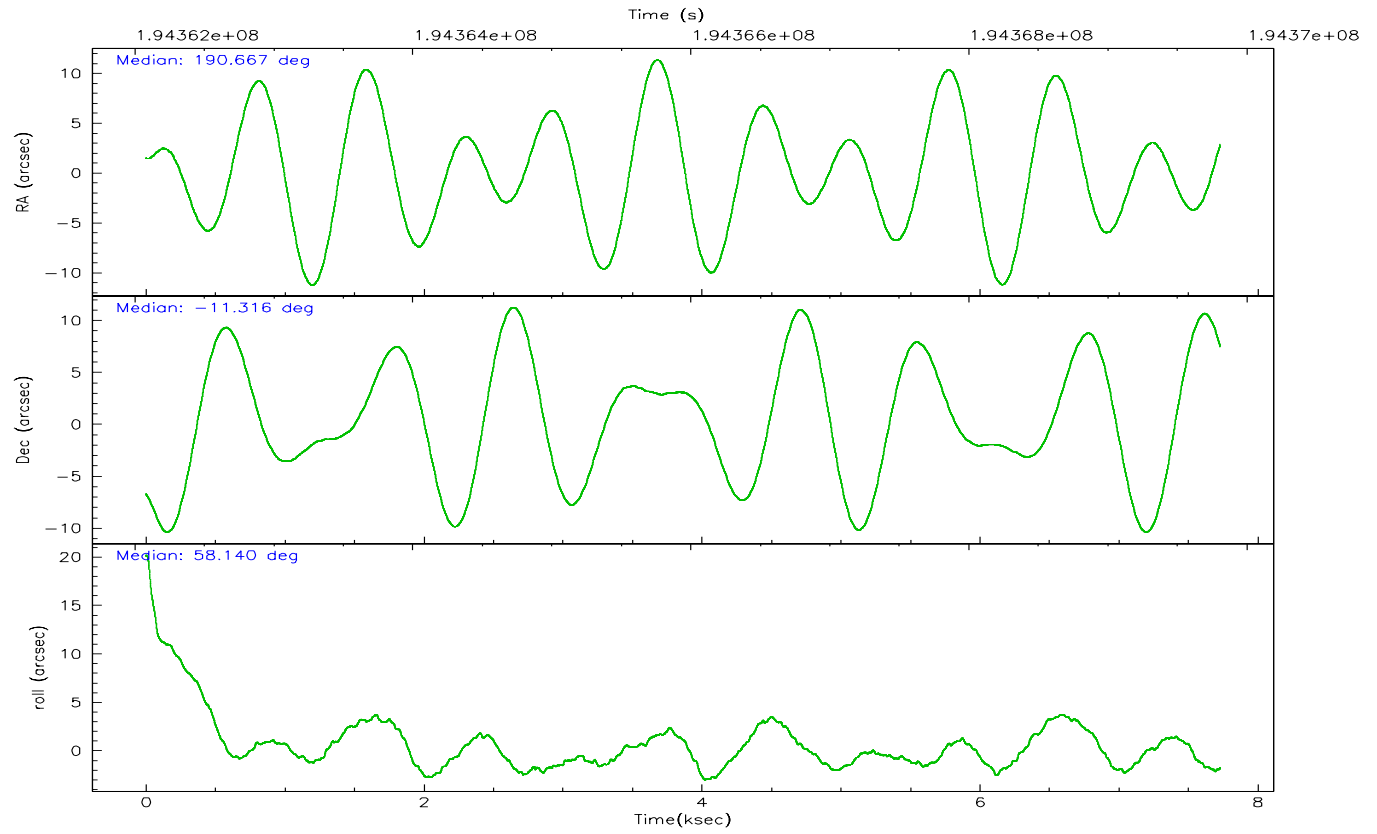
	ccd 2	ccd 3	ccd 5	ccd 6	ccd 7	ccd 8
grade 0 events	2410	2432	4132	2204	1396	3974
	5%	5%	5%	4%	2%	6%
grade 1 events	21	21	86	16	44	35
	0%	0%	0%	0%	0%	0%
grade 2 events	1171	1016	9656	1135	5783	2695
	2%	2%	13%	2%	9%	4%
grade 3 events	524	563	775	567	1100	1325
	1%	1%	1%	1%	1%	2%
grade 4 events	541	534	558	538	1146	1303
	1%	1%	0%	1%	1%	2%
grade 5 events	1891	2009	3456	2122	3863	2760
	4%	4%	4%	4%	6%	4%
grade 6 events	917	971	17207	1084	13972	3138
	2%	2%	24%	2%	22%	5%
grade 7 events	38312	36156	35220	38644	34574	42307
	83%	82%	49%	83%	55%	73%

2.2 Compared Parameters

Parameter	Planned	Actual	Parameter	Planned	Actual
Instrument	ACIS	ACIS	Obspar format version number	6	6
Detector	ACIS-235678	ACIS-235678	Obspar file type	PREDICTED	ACTUAL
Grating	NONE	NONE	Obspar update status	NONE	UPDATED
Data mode	FAINT	FAINT	On-chip summing requested	N	N
Observation mode	POINTING	POINTING	Subarray requested	NONE	NONE
Pointing RA	190.666491	190.6669662686693	Alternating exposures requested	N	N
Pointing Dec	-11.342533	-11.31533051678859	Primary exposure time	0.000000	3.2
Pointing Roll	57.989751	58.14648568775284			
SIM focus pos (mm)	-0.684267	-0.6828225247311905			
SIM defocus (mm)	0	0.001444936568705701			
SIM translation stage pos (mm)	-190.132523	-190.1425803651734			
SIM translation stage offset (mm)	0	0.01005778216563158			
Observation start time	194362808.184000	194361575.93135			
Observation start date	2004-02-28T13:39:04	2004-02-28T13:19:35			
Observation end time	194369808.184000	194370670.75675			
Observation end date	2004-02-28T15:35:44	2004-02-28T15:51:10			
Read mode	TIMED	TIMED			

2.3 Aspect



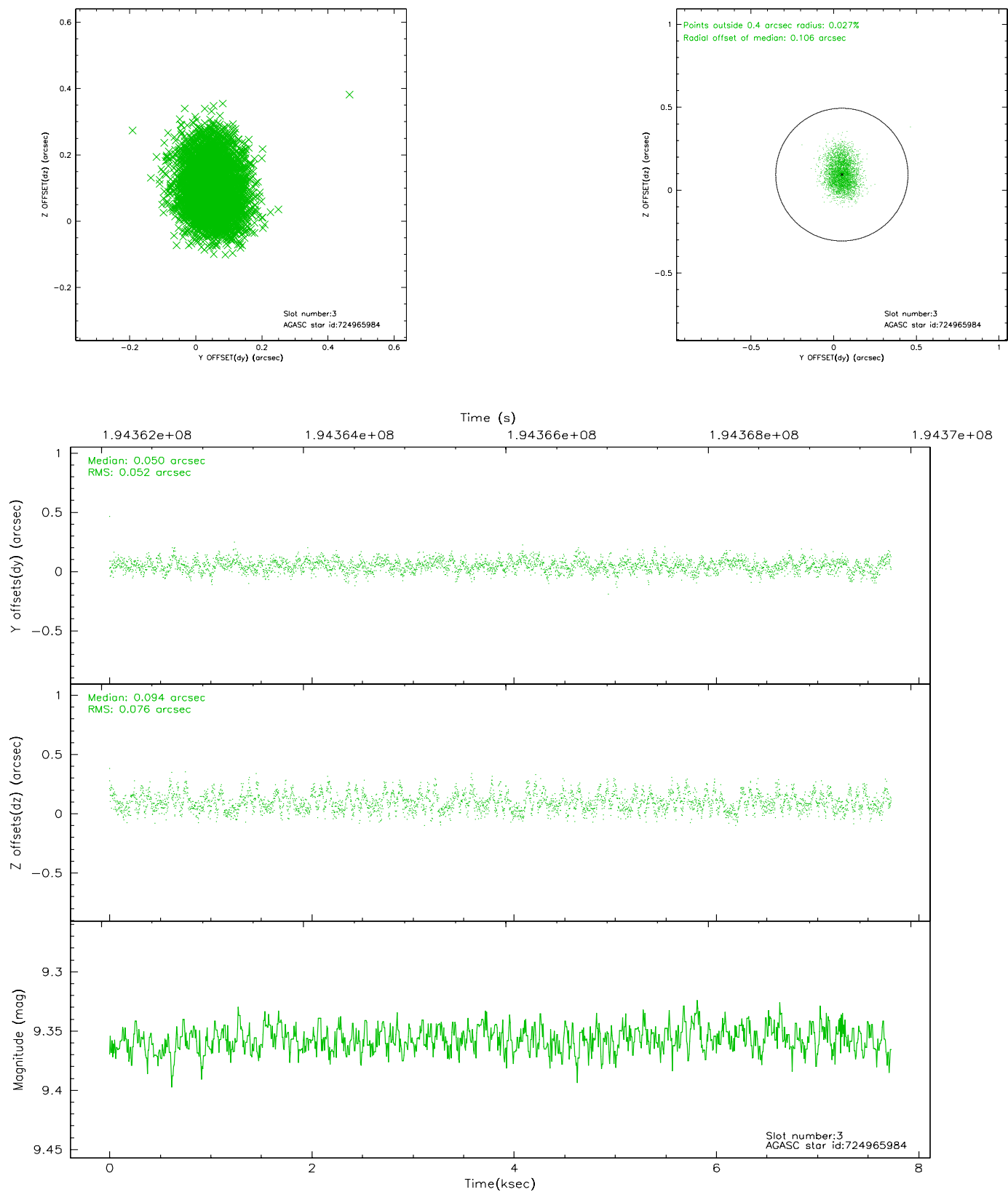


Slot Statistics

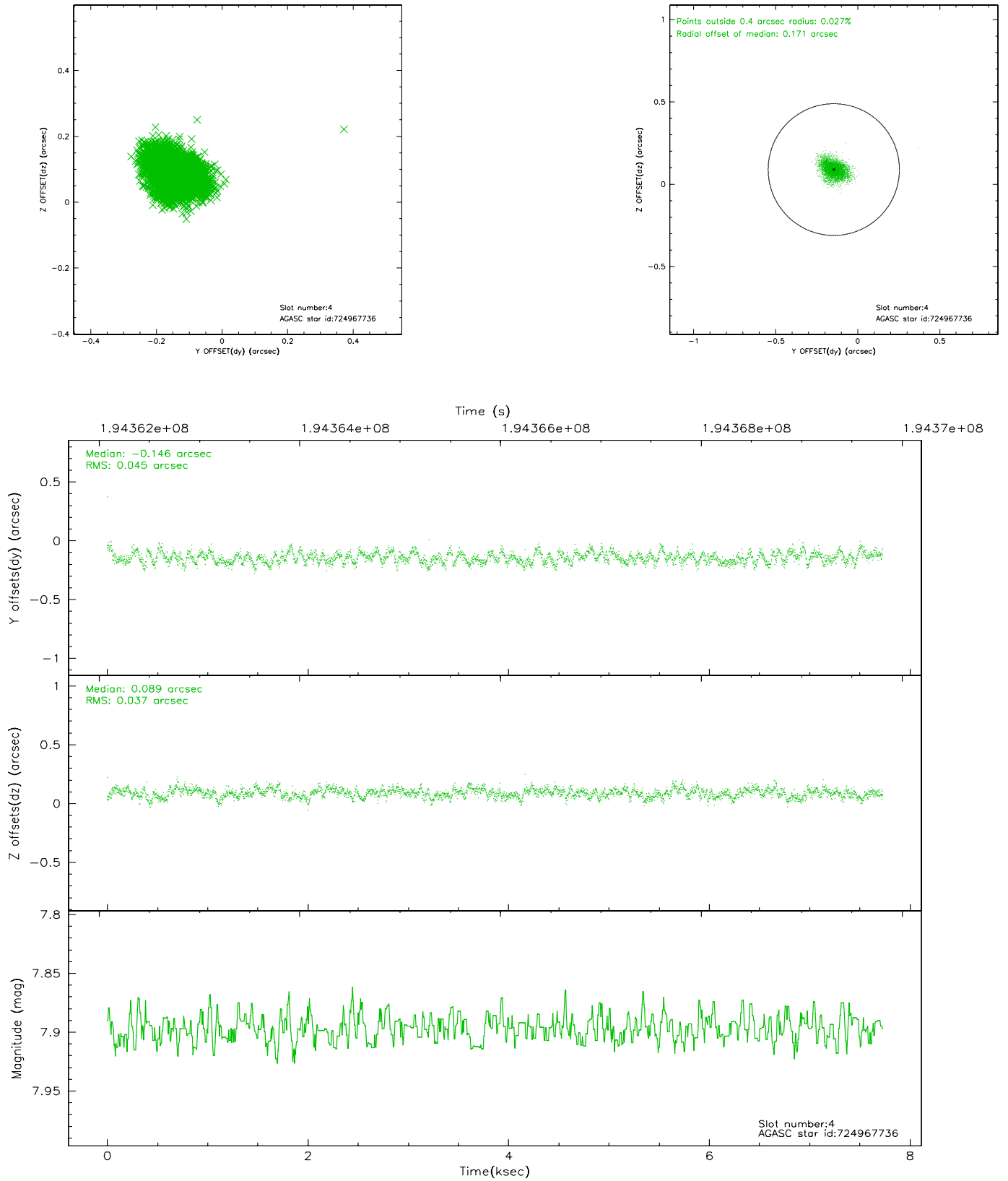
slot	status	id	mag	n_pts	med_dy	med_dz	dr1	dr2	ra	dec	mean_y	mean_z
0	FID	ACIS-S-2	7.10	1886	-0.002	-0.013	0.006	0.011	0.000000	0.000000	-760.12	-1729.73
1	FID	ACIS-S-4	7.21	1886	0.014	0.005	0.005	0.009	0.000000	0.000000	2152.85	178.01
2	FID	ACIS-S-5	7.23	1886	-0.043	0.017	0.006	0.011	0.000000	0.000000	-1812.05	172.54
3	GUIDE	724965984	9.36	3769	0.050	0.094	0.098	0.160	191.038520	-11.936246	-1117.86	-2244.38
4	GUIDE	724967736	7.90	3772	-0.146	0.089	0.062	0.100	191.267974	-10.999423	2172.37	-1148.92
5	GUIDE	724969752	8.53	3771	-0.005	0.040	0.068	0.113	191.101692	-11.318790	886.96	-1257.96
6	GUIDE	724970568	9.27	3771	0.132	-0.045	0.092	0.149	190.273943	-11.584336	-1472.06	711.65
7	GUIDE	724971048	8.80	3769	-0.030	-0.181	0.072	0.117	190.547082	-11.185183	256.50	658.01

2.4 Star Slots

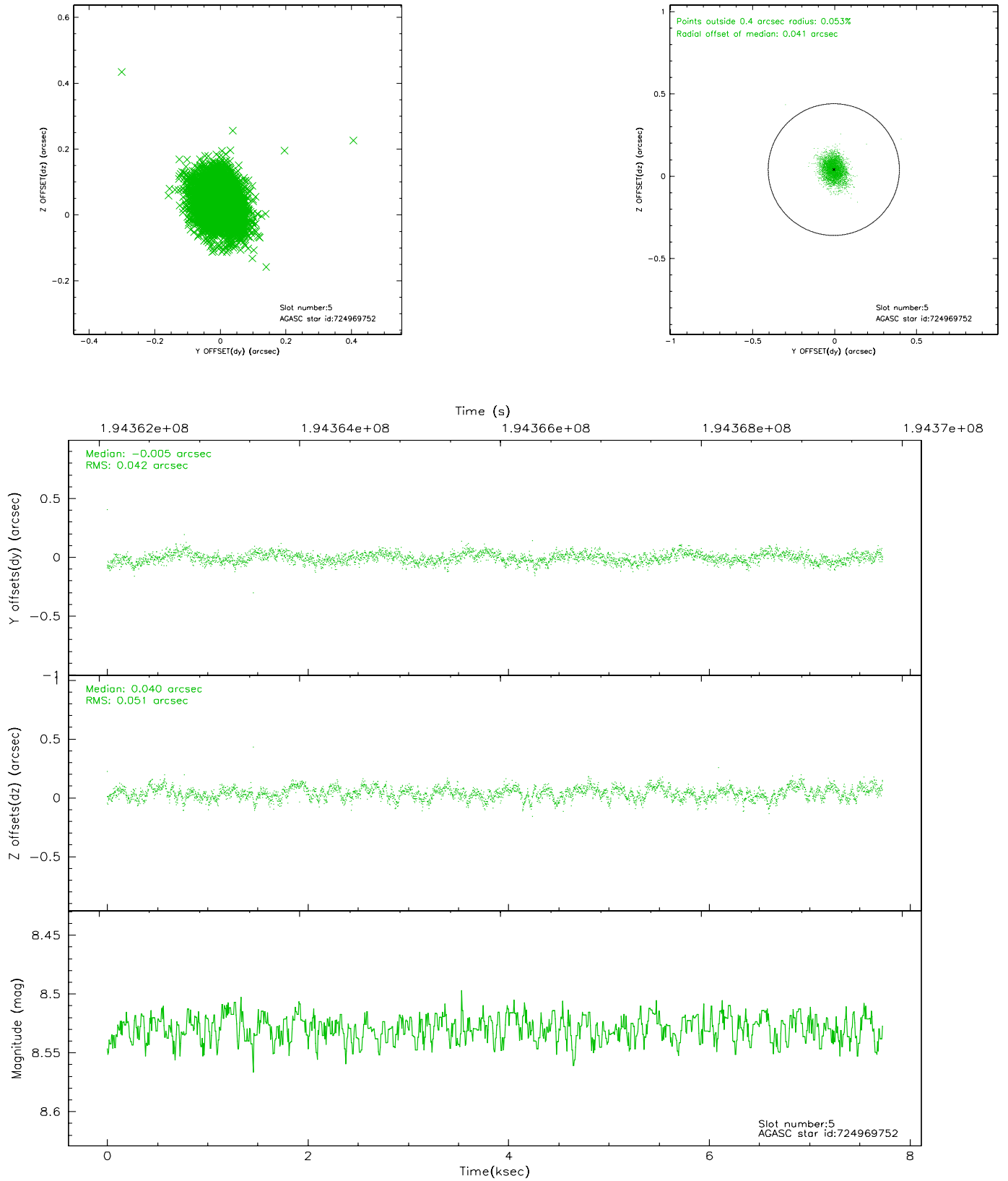
2.4.1 Slot 3



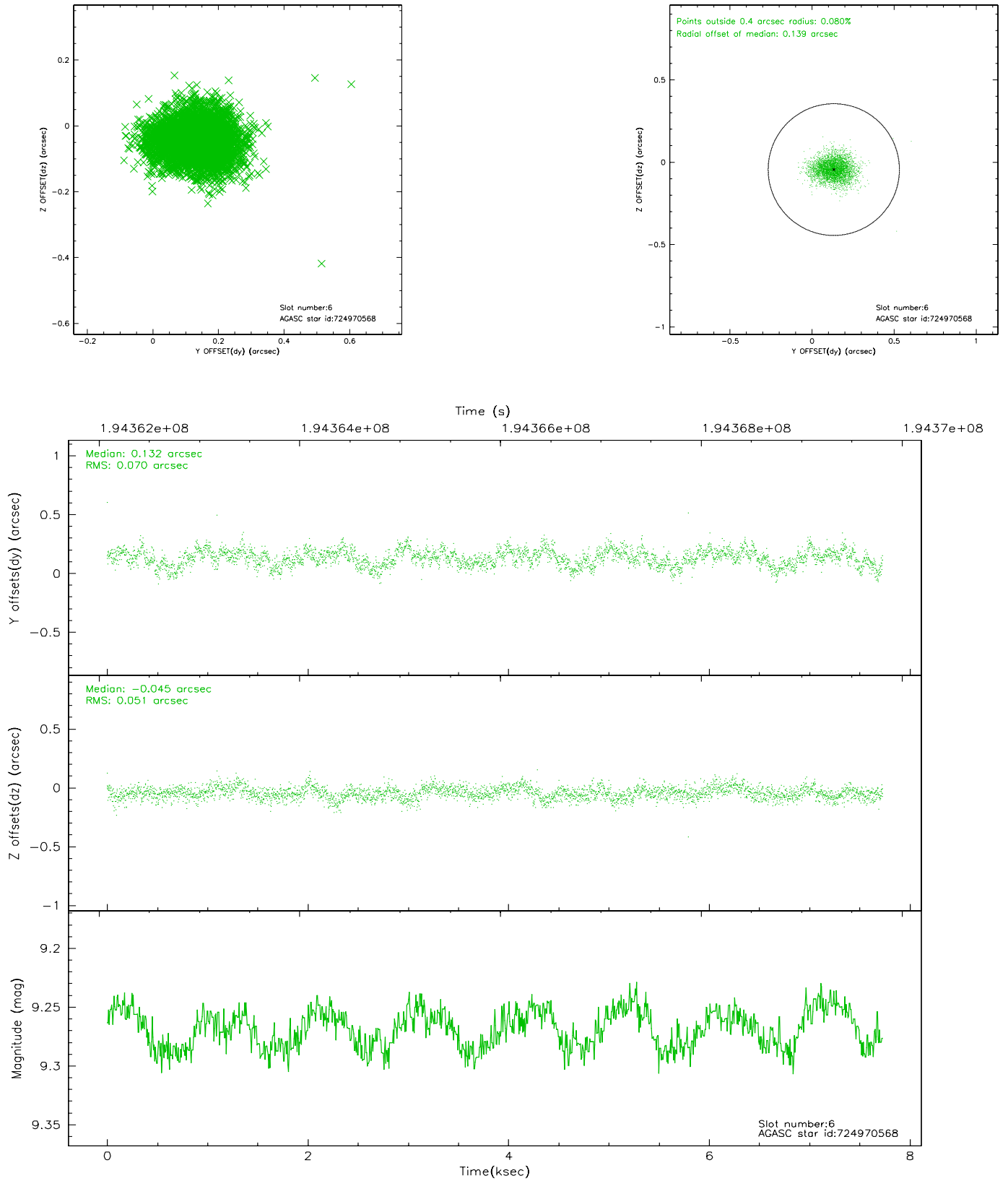
2.4.2 Slot 4



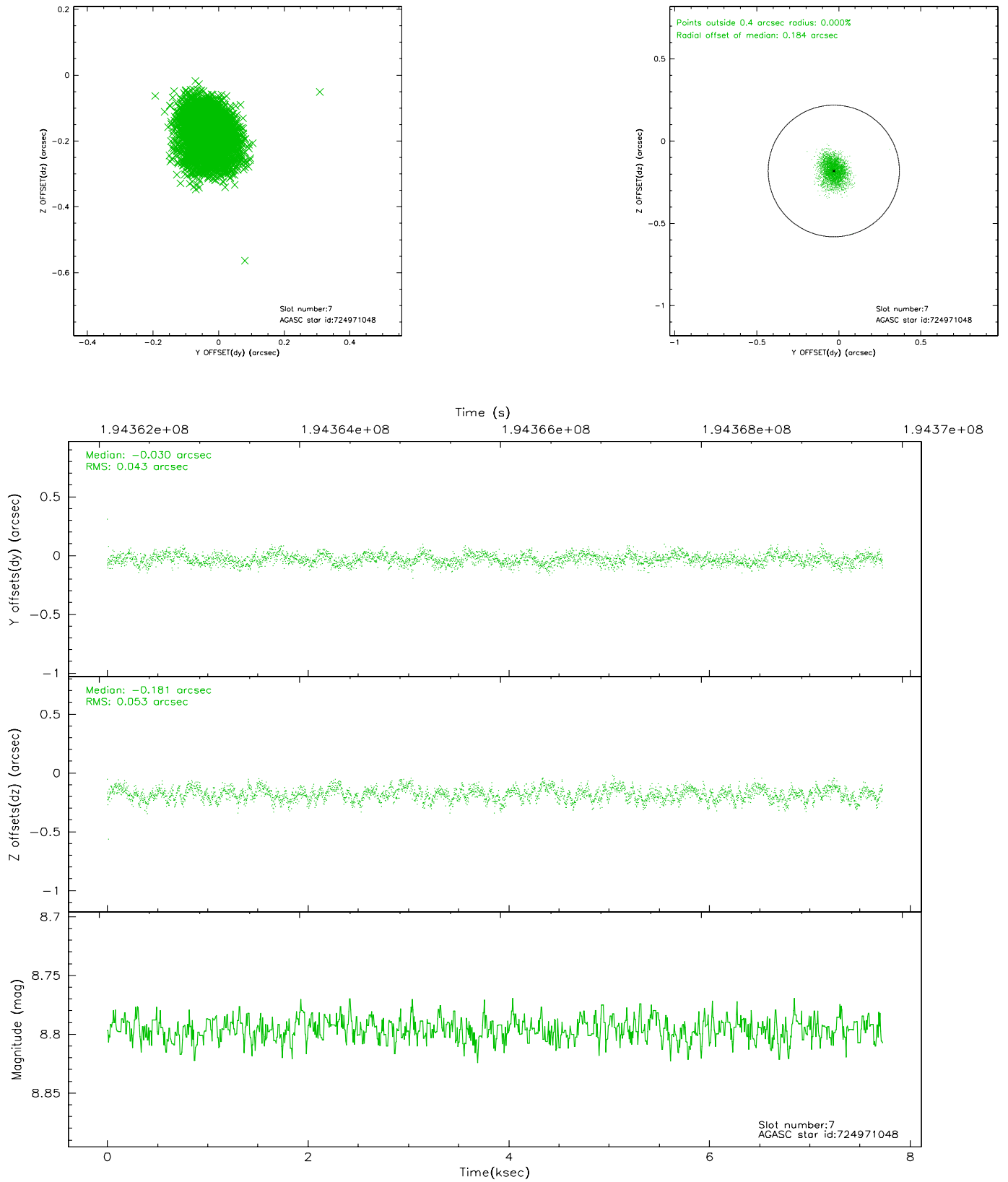
2.4.3 Slot 5



2.4.4 Slot 6

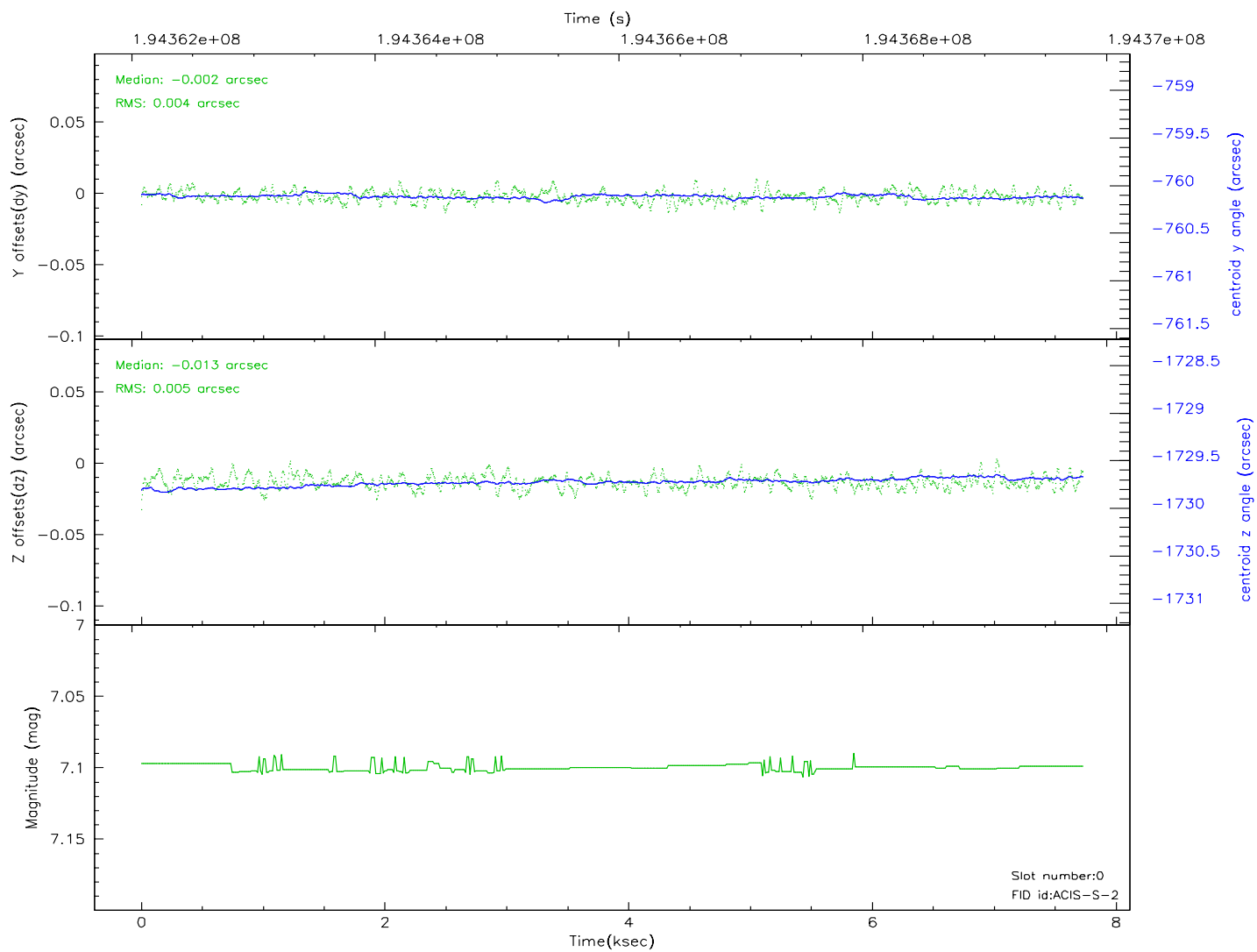
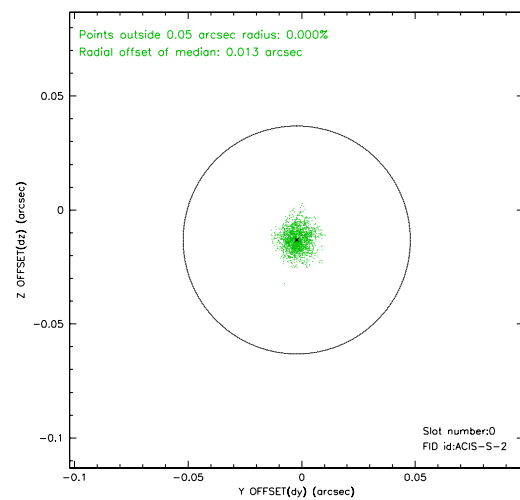
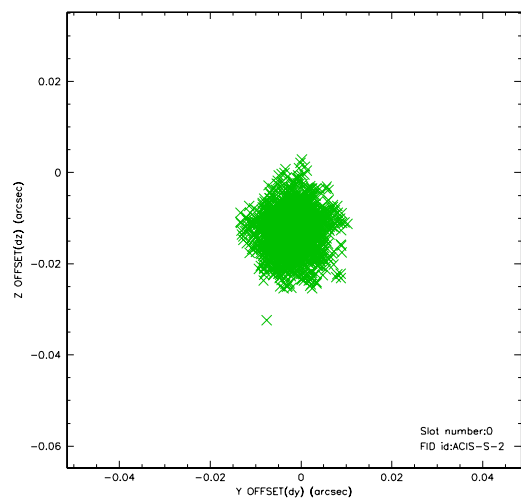


2.4.5 Slot 7

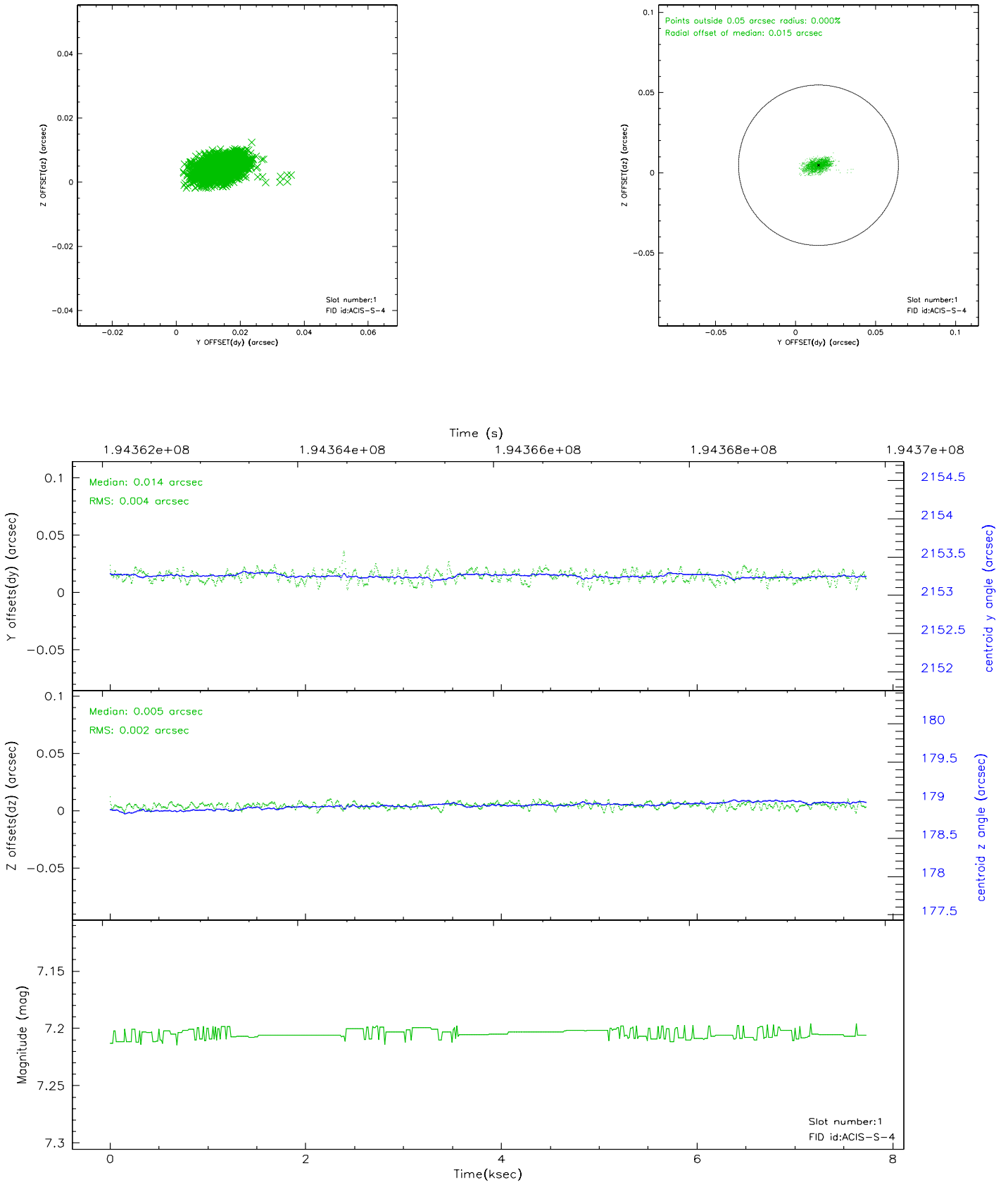


2.5 FID Slots

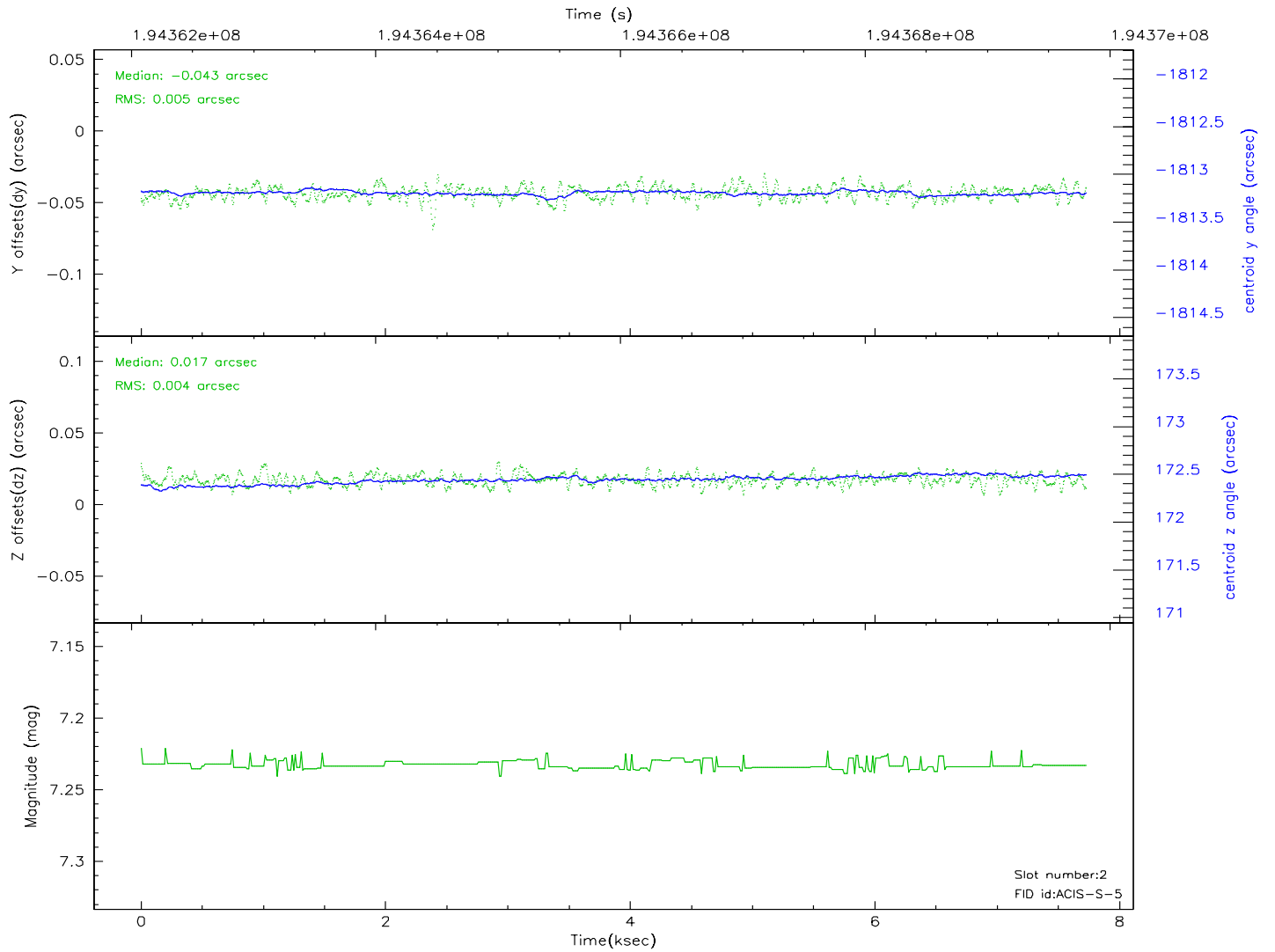
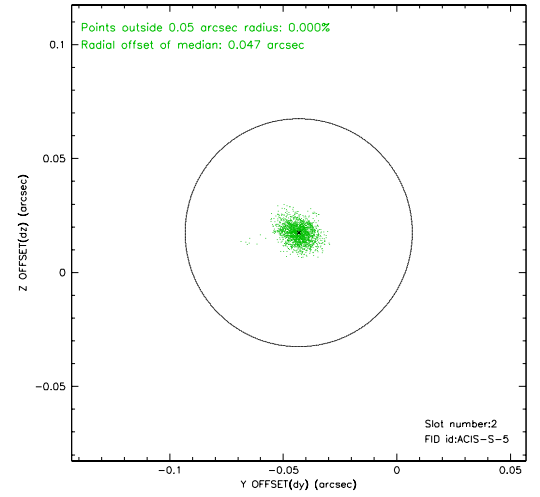
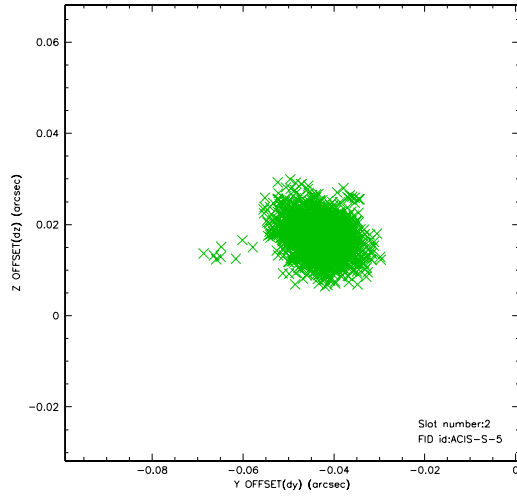
2.5.1 Slot 0



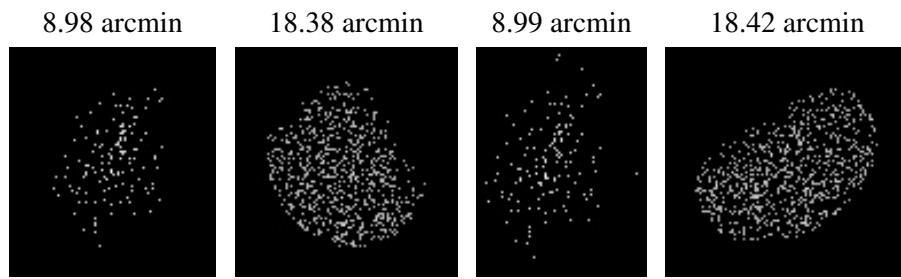
2.5.2 Slot 1



2.5.3 Slot 2



3 Point Sources



A Summary

A.1 Status

V&V Scientist	Jen Lauer
V&V Date (YYYY-MM-DD)	2006.05.31
V&V Edition	1
V&V Disposition and Status	OK
V&V Charge Time	6.959

A.2 Comments