

V&V Reference Report

L2 ASCDS Version : 8.4.5

Observation 4278 - L2 Version 3
Chandra X-Ray Center

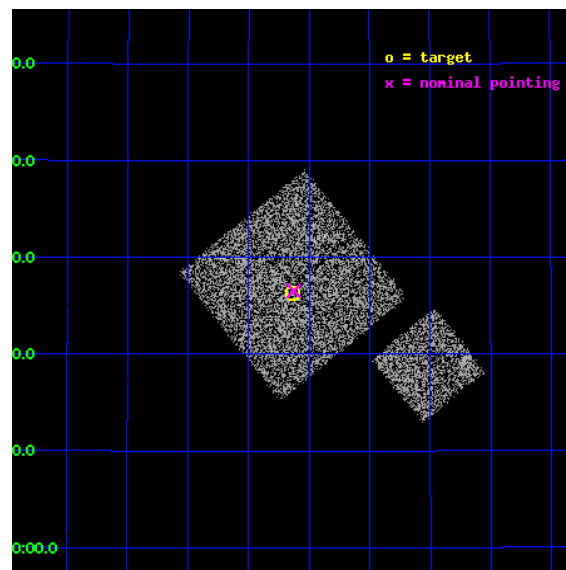
L2 Processing Date : Oct 25 2012

Contents

1	Front	2
2	OBI	3
2.1	OBI	3
2.1.1	Images	3
2.1.2	Bias	3
2.1.3	Parameters	4
2.1.4	Events	4
2.2	Compared Parameters	5
2.3	Aspect	6
2.4	Star Slots	9
2.4.1	Slot 3	9
2.4.2	Slot 4	10
2.4.3	Slot 5	11
2.4.4	Slot 6	12
2.4.5	Slot 7	13
2.5	FID Slots	14
2.5.1	Slot 0	14
2.5.2	Slot 1	15
2.5.3	Slot 2	16
A	Summary	17
A.1	Status	17
A.2	Comments	17

1 Front

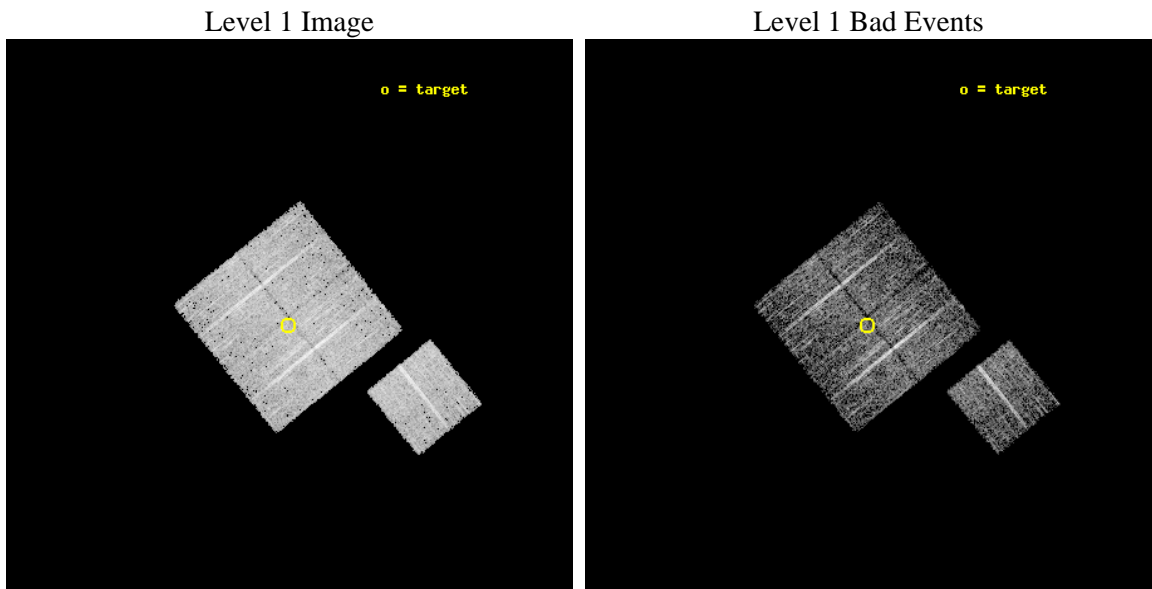
seq_num	900321	Sequence number
obs_id	4278	Observation id
title	A CHANDRA WIDE-FIELD SURVEY TO MAP THE COSMIC WEB AND INVESTIGATE THE EVOLUTION OF NUCLEAR ACCRETION	Proposal title
observer	Dr. Christine Jones	Principal investigator
object	SS56	Source name
dtcycle	0	
cycle	P	events from which exps? Prim/Second/Both
ra_targ	218.034014	Observer's specified target RA [deg]
dec_targ	32.438448	Observer's specified target Dec [deg]
ra_nom	218.03135735262	Nominal RA [deg]
dec_nom	32.442495409208	Nominal Dec [deg]
roll_nom	141.01009304648	Nominal Roll [deg]
revision	3	Processing version of data
ontime	5015.7999903262	Sum of GTIs [s]
livetime	4950.2648708743	Livetime [s]
ontime0	5015.7999903262	Sum of GTIs [s]
ontime1	5015.7999903262	Sum of GTIs [s]
ontime2	5015.7999903262	Sum of GTIs [s]
ontime3	5015.7999903262	Sum of GTIs [s]
ontime6	5015.7999903262	Sum of GTIs [s]
l2events	16248	Number of level 2 events



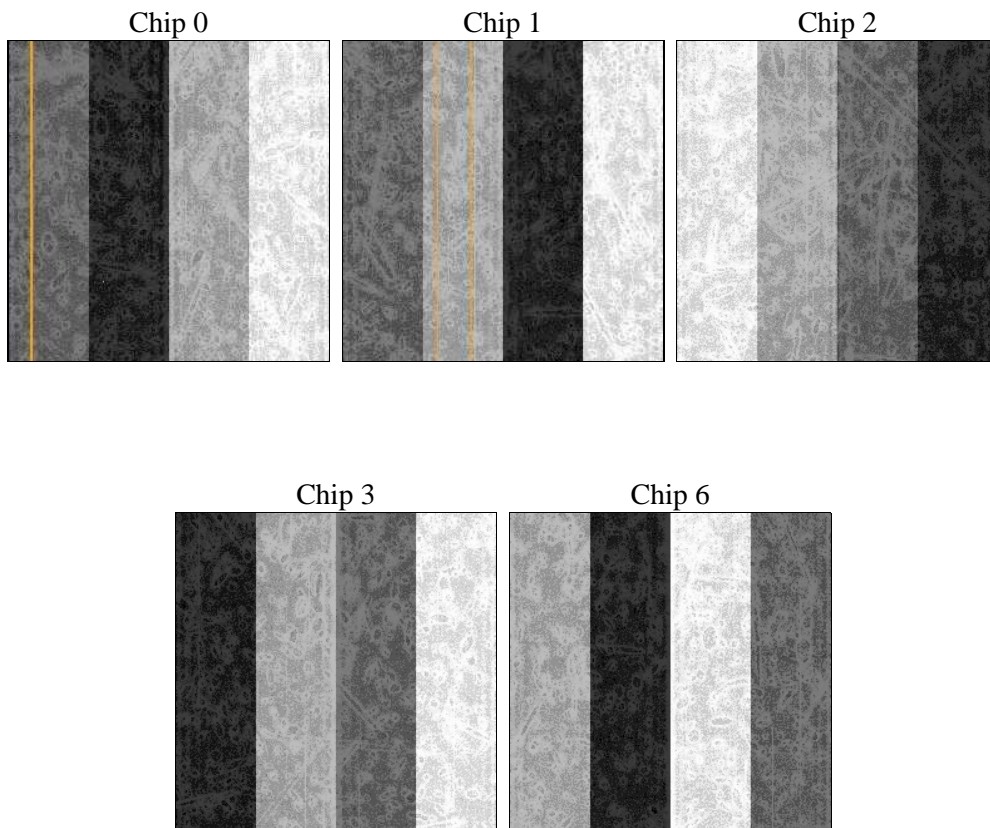
2 OBI

2.1 OBI

2.1.1 Images



2.1.2 Bias



2.1.3 Parameters

obi_num	1	Obi number	sched_exp_time	4900.000000	[s] Scheduled observation exposure time
ascdsver	8.4.5	Processing system revision	ontime	5015.7999903262	Sum of GTIs [s]
caldsver	4.5.2	 	ontime0	5015.7999903262	Sum of GTIs [s]
date	2012-10-25T22:59:21	Date and time of file creation	ontime1	5015.7999903262	Sum of GTIs [s]
revision	3	Processing version of data	ontime2	5015.7999903262	Sum of GTIs [s]
			ontime3	5015.7999903262	Sum of GTIs [s]
			ontime6	5015.7999903262	Sum of GTIs [s]
			l1events	153606	Number of level 1 events

2.1.4 Events

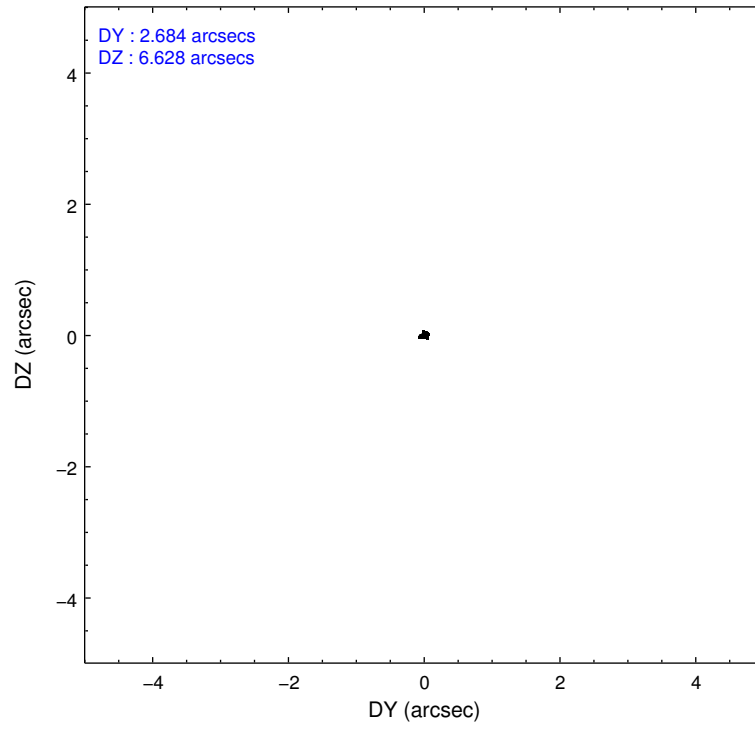
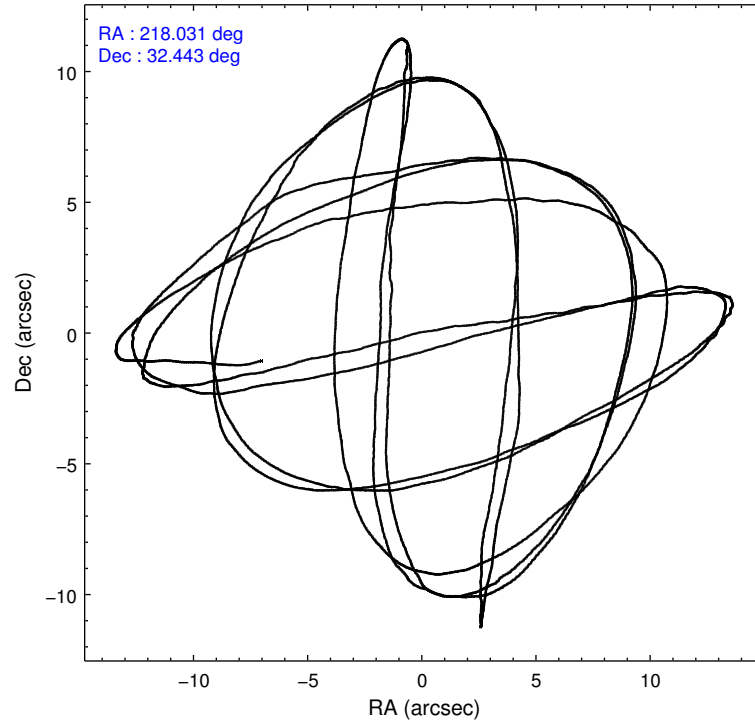
	ccd 0	ccd 1	ccd 2	ccd 3	ccd 6
level 1 events	28138	30306	32621	30857	31684
rejected events	24253	26315	28852	27350	27939
rejected %	86%	86%	88%	88%	88%

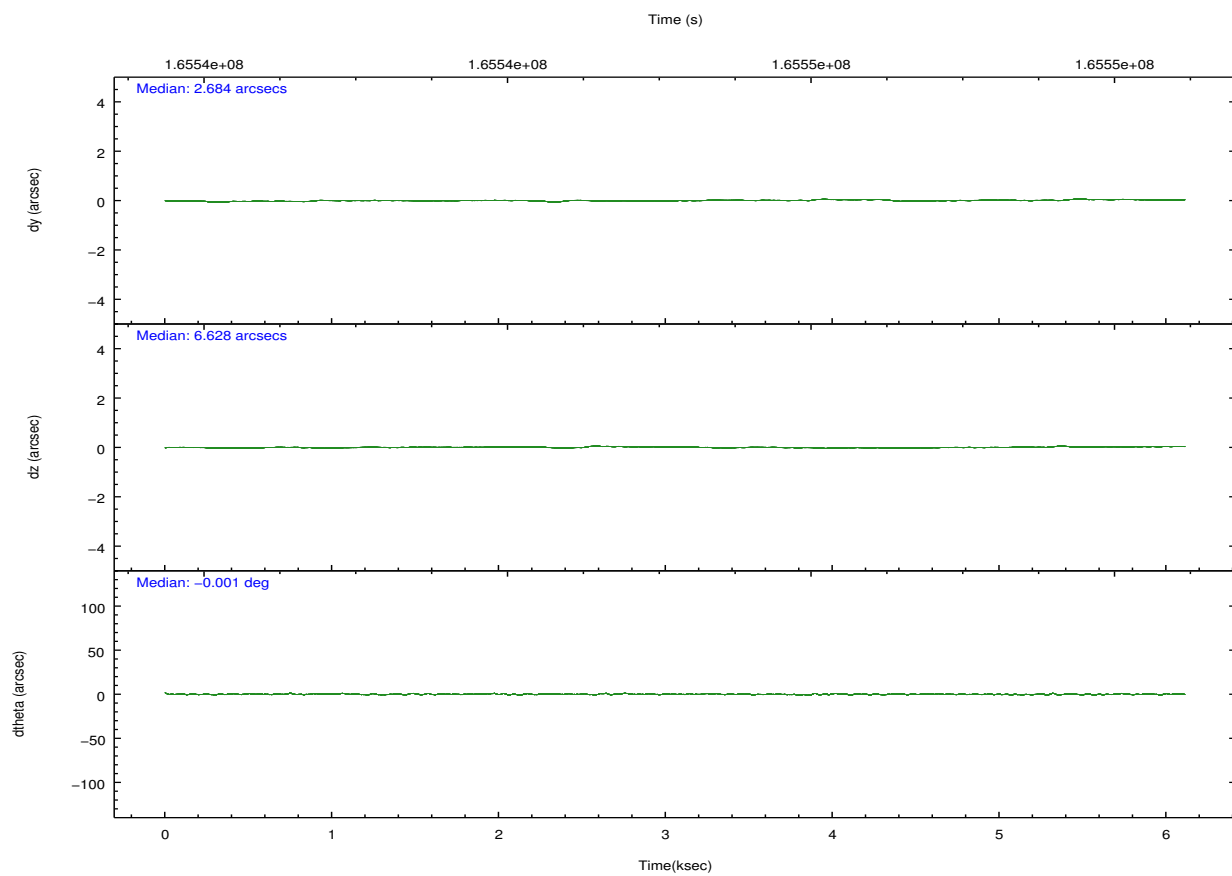
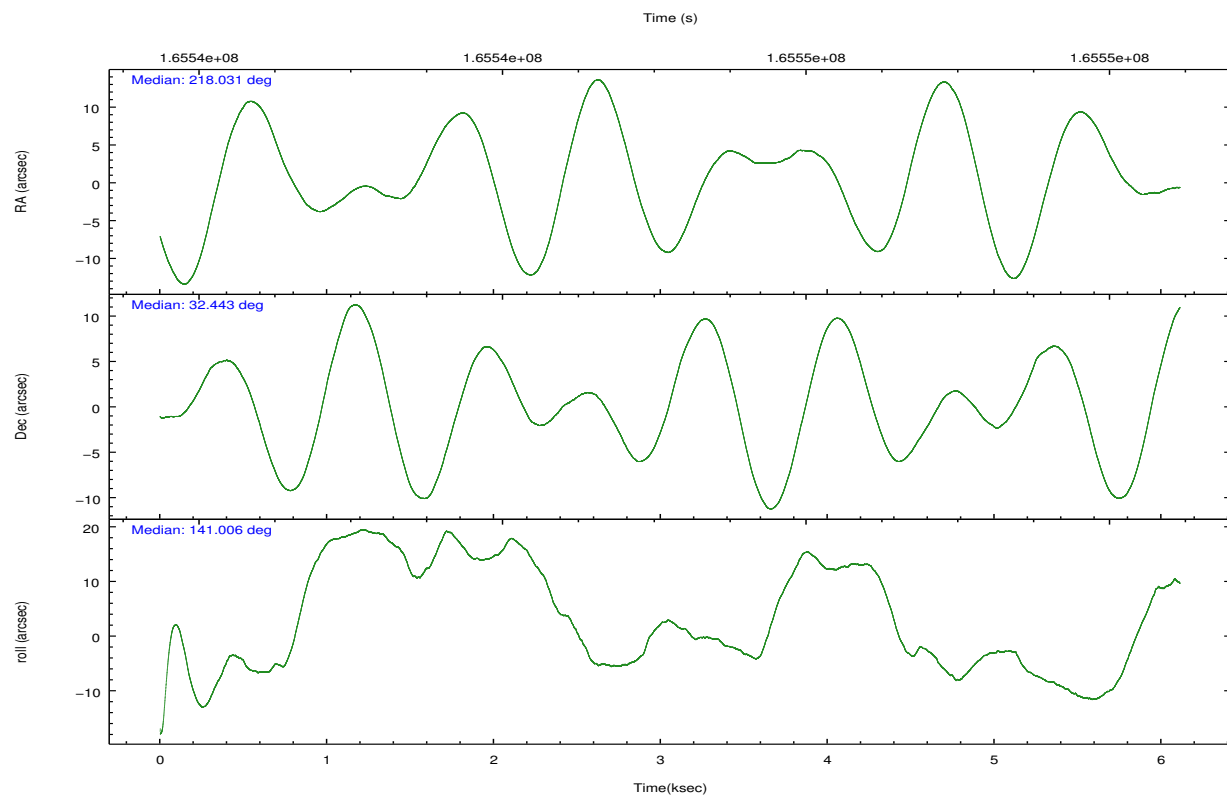
	ccd 0	ccd 1	ccd 2	ccd 3	ccd 6
grade 0 events	1665	1609	1678	1569	1513
	5%	5%	5%	5%	4%
grade 1 events	9	12	19	15	18
	0%	0%	0%	0%	0%
grade 2 events	839	840	748	670	763
	2%	2%	2%	2%	2%
grade 3 events	357	380	368	349	379
	1%	1%	1%	1%	1%
grade 4 events	342	405	365	341	361
	1%	1%	1%	1%	1%
grade 5 events	1271	1326	1201	1417	1376
	4%	4%	3%	4%	4%
grade 6 events	686	761	618	580	734
	2%	2%	1%	1%	2%
grade 7 events	22969	24973	27624	25916	26540
	81%	82%	84%	83%	83%

2.2 Compared Parameters

Parameter	Planned	Actual	Parameter	Planned	Actual
Instrument	ACIS	ACIS	Obspar format version number	7	7
Detector	ACIS-01236	ACIS-01236	Obspar file type	PREDICTED	ACTUAL
Grating	NONE	NONE	Obspar update status	NONE	UPDATED
Data mode	VFAINT	VFAINT	Number of optional ACIS chips dropped	0	0
Observation mode	POINTING	POINTING	On-chip summing requested	N	N
[deg] Pointing RA	218.063500	218.0313573526194	Subarray requested	NONE	NONE
[deg] Pointing Dec	32.438360	32.44249540920834	Alternating exposures requested	N	N
[deg] Pointing Roll	140.784189	141.0100930464791	[s] Primary exposure time	0.000000	3.1
[mm] SIM focus pos	-0.782348	-0.7809083437167272			
[mm] SIM defocus	0	0.001439871863259334			
[mm] SIM translation stage pos	-233.592463	-233.5874344608287			
[mm] SIM translation stage offset	0	-0.005018542100998502			
[s] Observation start time (MET)	165543264.184000	165541787.55632			
Observation start date	2003-04-01T00:13:20	2003-03-31T23:49:47			
[s] Observation end time (MET)	165548164.184000	165548297.84409			
Observation end date	2003-04-01T01:35:00	2003-04-01T01:38:17			
Read mode	TIMED	TIMED			

2.3 Aspect



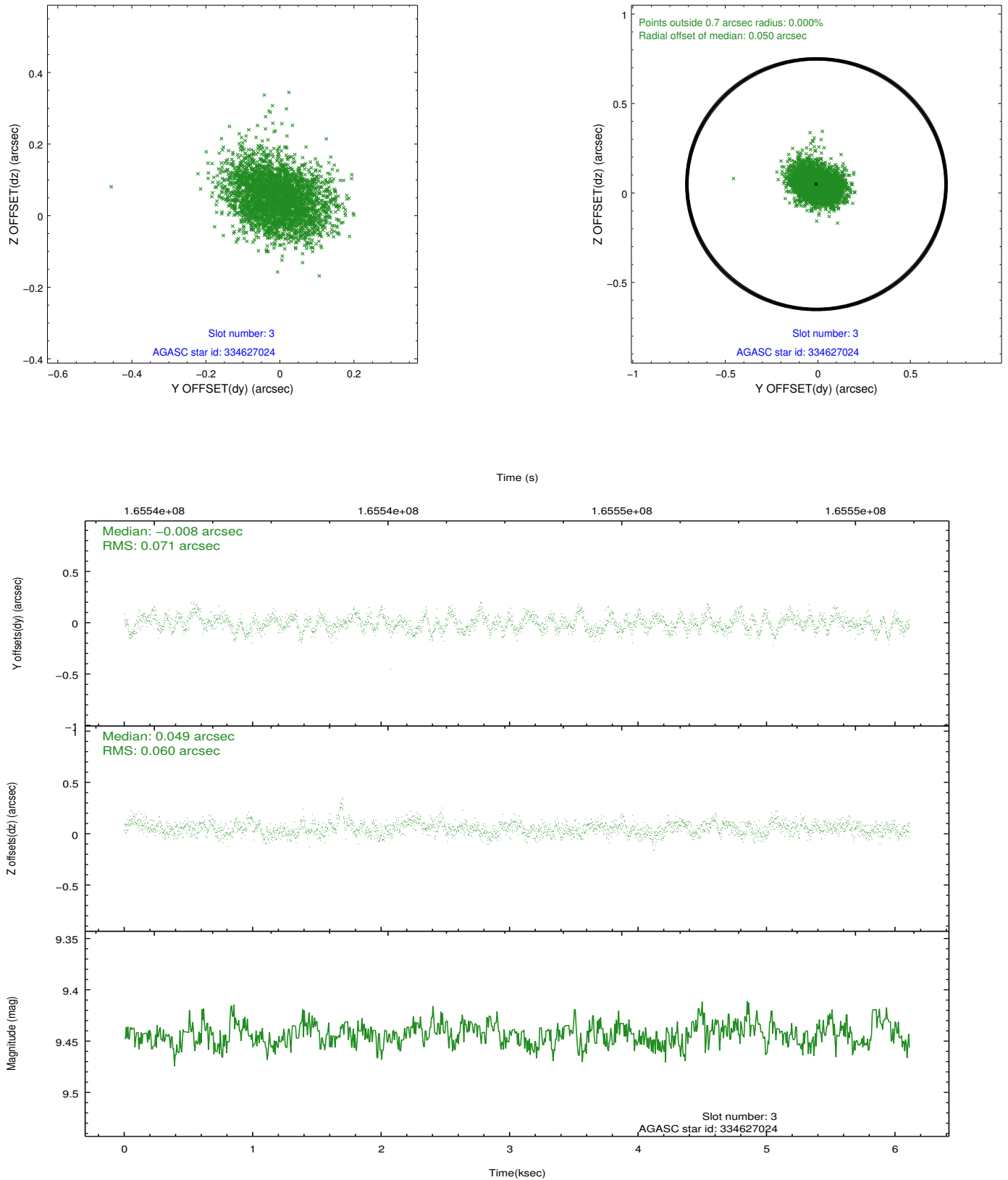


Slot Statistics

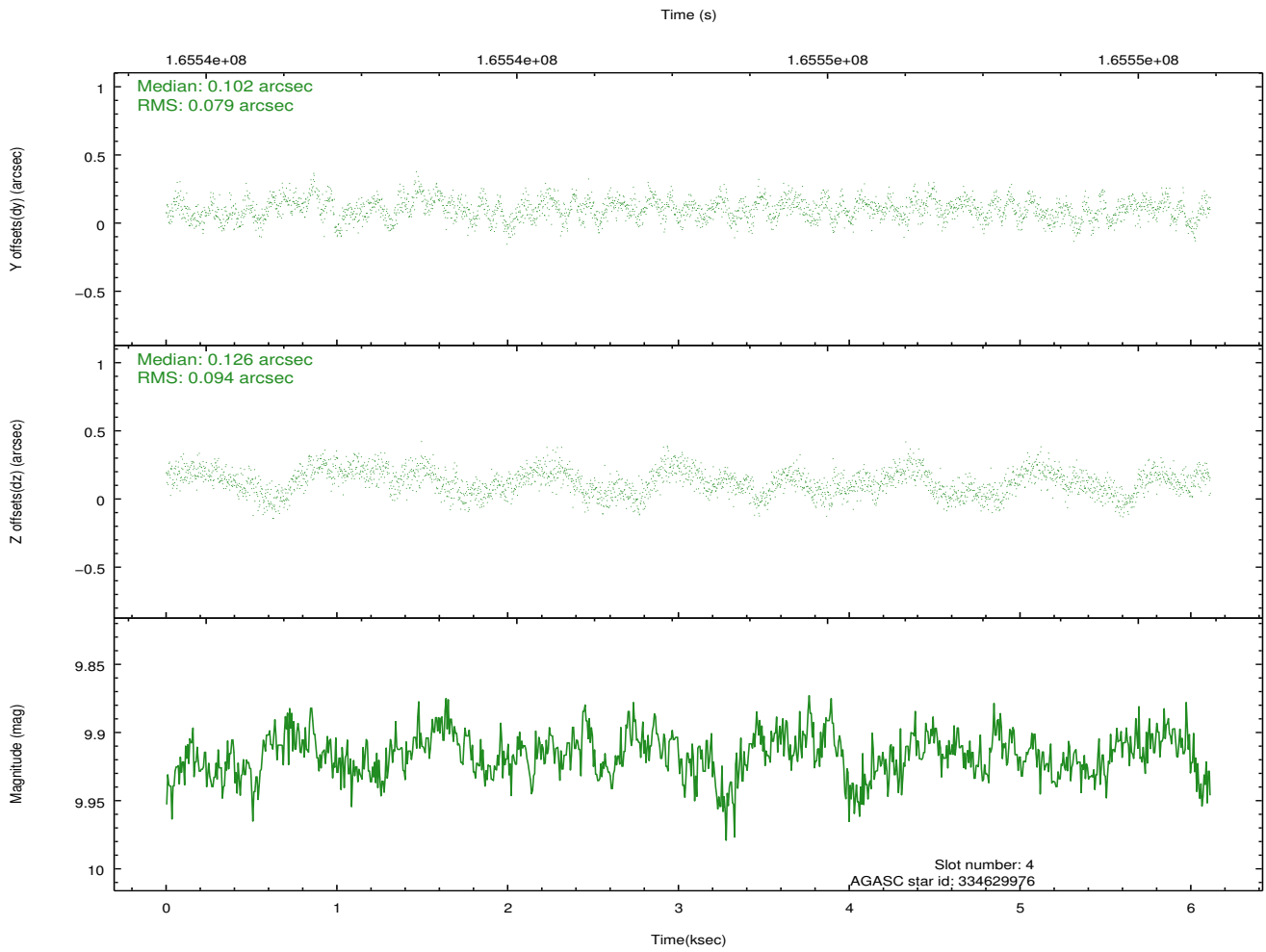
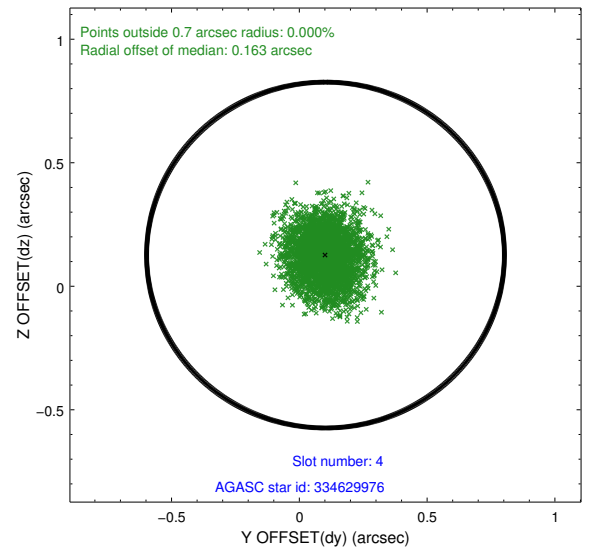
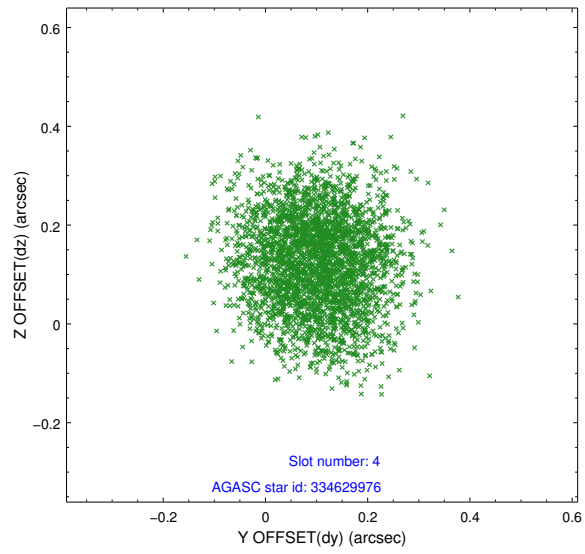
slot	status	id	mag	n_pts	med_dy	med_dz	dr1	dr2	ra	dec	mean_y	mean_z
0	FID	ACIS-I-1	7.25	1491	0.015	-0.008	0.006	0.010	0.000000	0.000000	937.12	-830.04
1	FID	ACIS-I-5	7.24	1492	-0.086	0.053	0.006	0.010	0.000000	0.000000	-1810.52	1067.08
2	FID	ACIS-I-6	7.26	1491	-0.021	0.025	0.006	0.011	0.000000	0.000000	401.62	1712.61
3	GUIDE	334627024	9.44	2979	-0.008	0.049	0.098	0.158	217.318801	32.278221	1396.68	1873.86
4	GUIDE	334629976	9.92	2975	0.102	0.126	0.133	0.207	217.912342	31.982896	-678.13	1562.84
5	BAD	334631560	10.52	2735	0.241	-0.424	0.194	0.338	218.111981	31.778907	-1616.21	1746.02
6	GUIDE	335027640	9.12	2980	-0.126	0.110	0.092	0.154	218.092211	33.193770	1652.16	-2160.82
7	GUIDE	335029384	8.50	2981	-0.190	0.125	0.077	0.123	217.848061	33.088477	1984.21	-1403.35

2.4 Star Slots

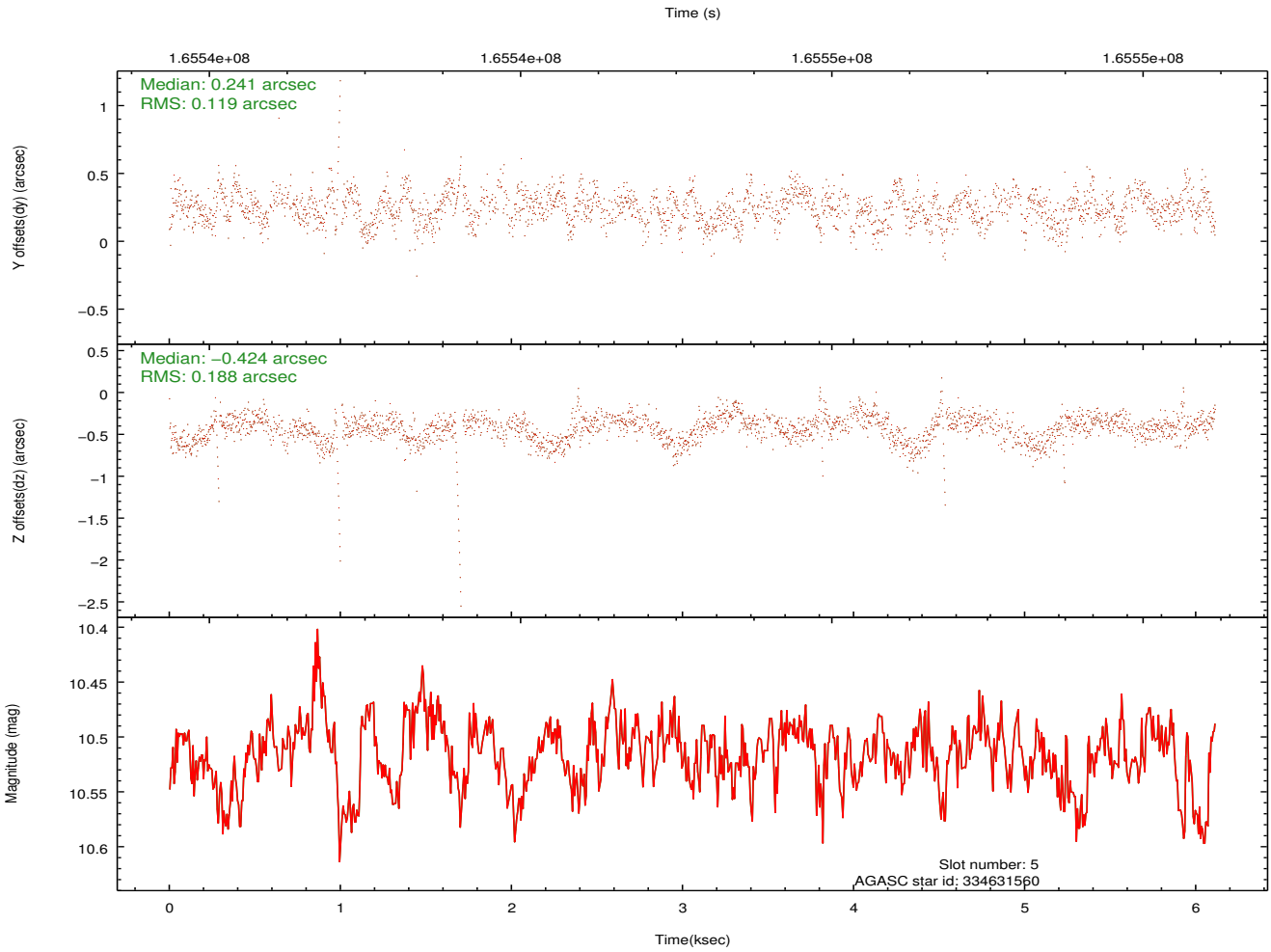
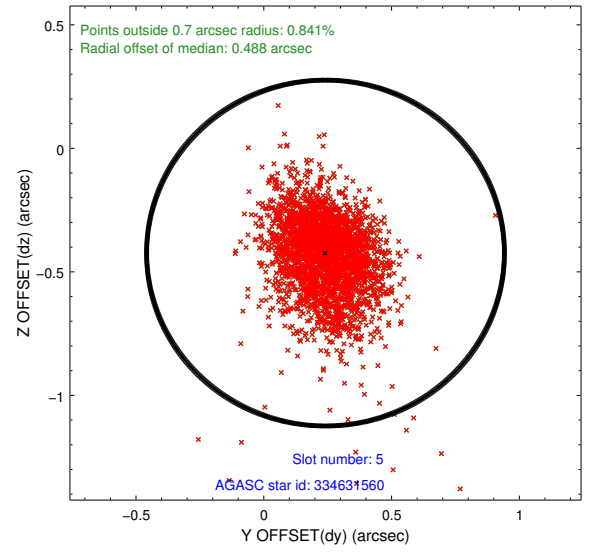
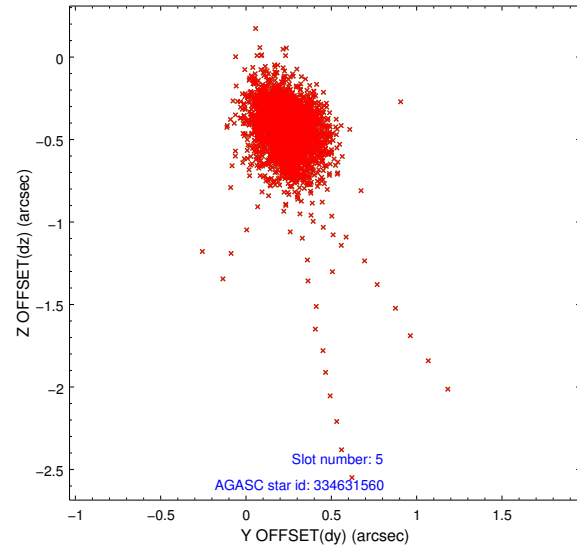
2.4.1 Slot 3



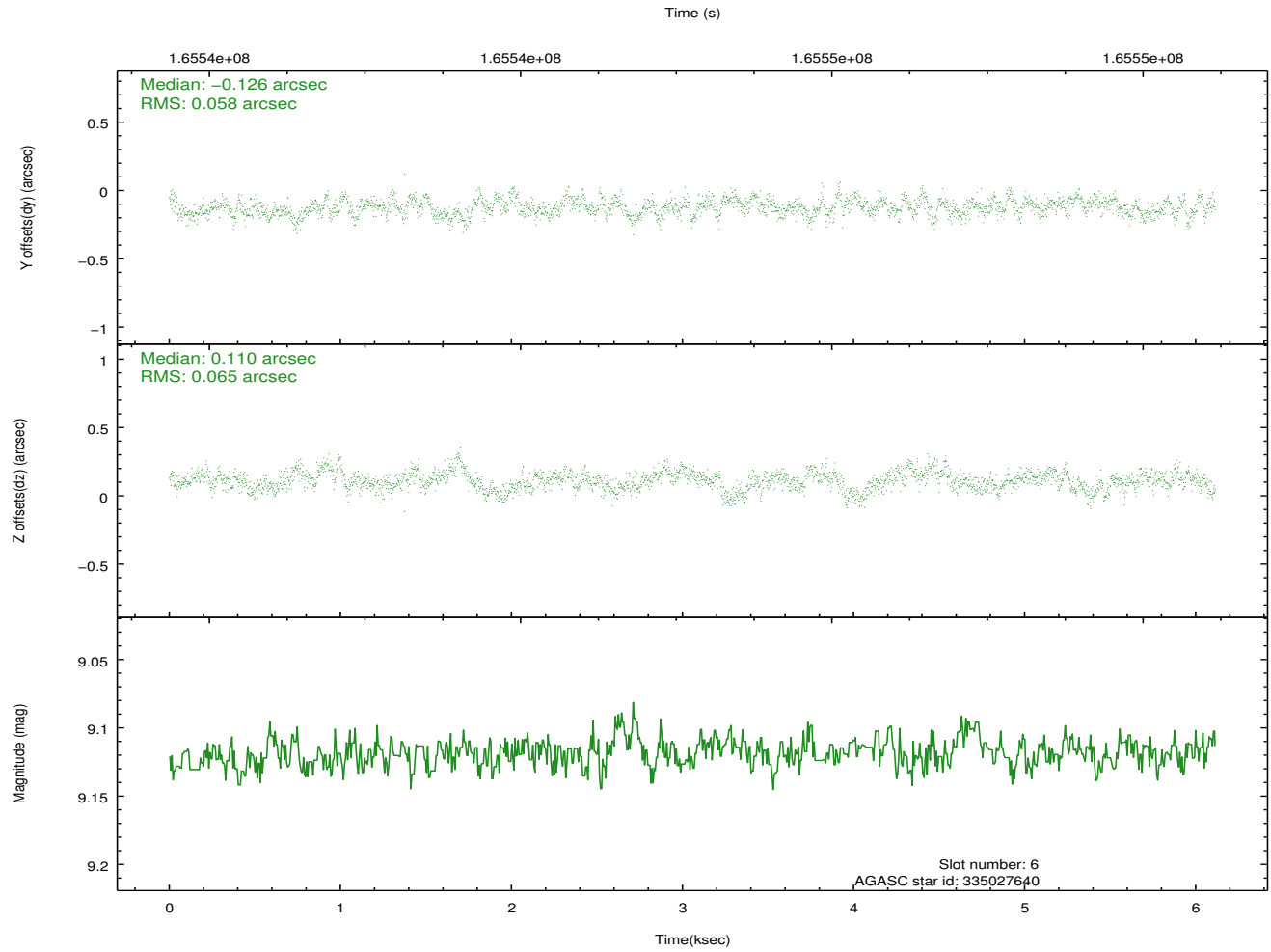
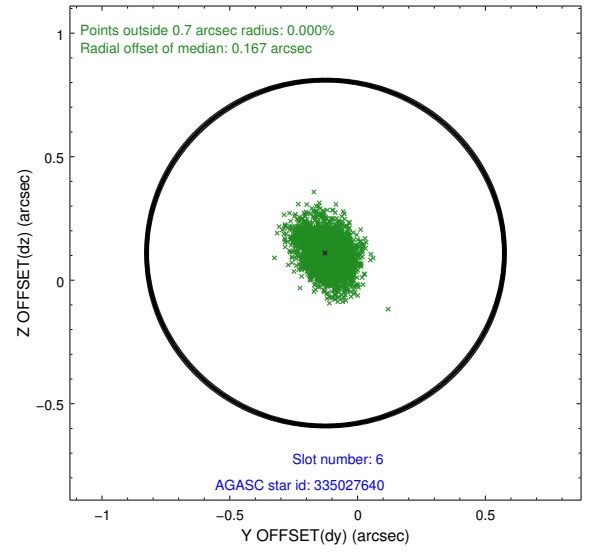
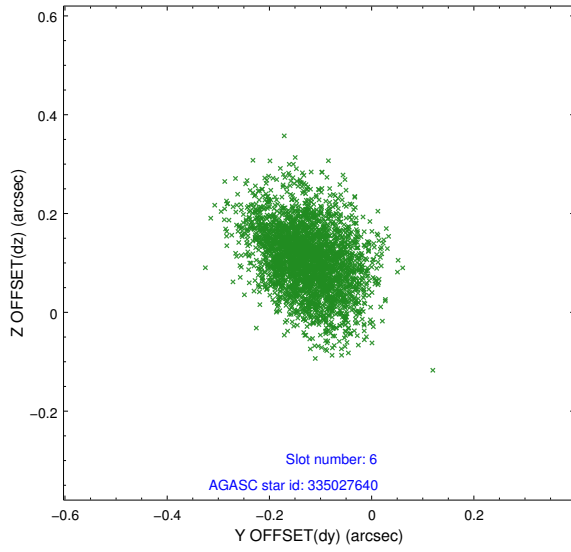
2.4.2 Slot 4



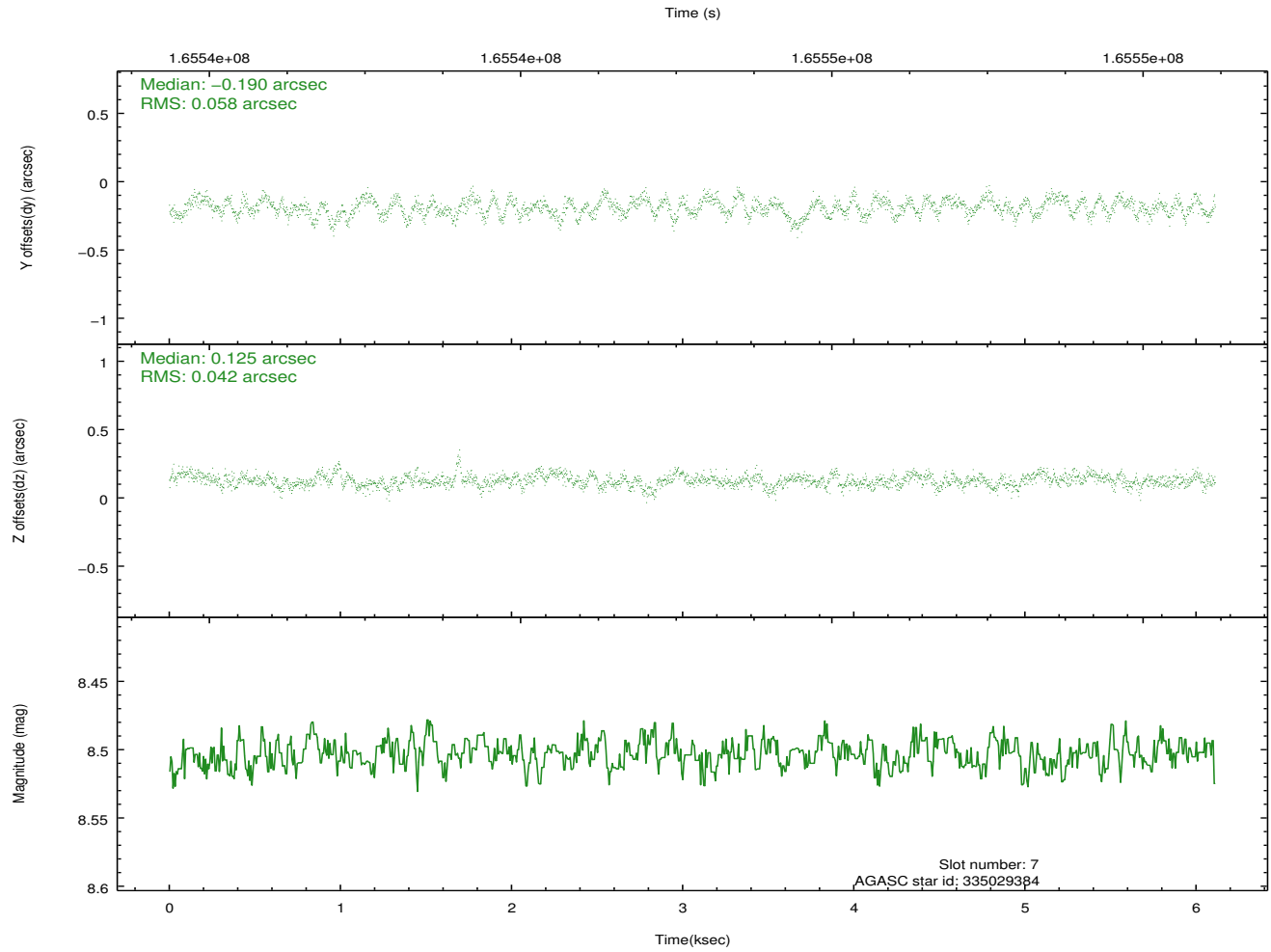
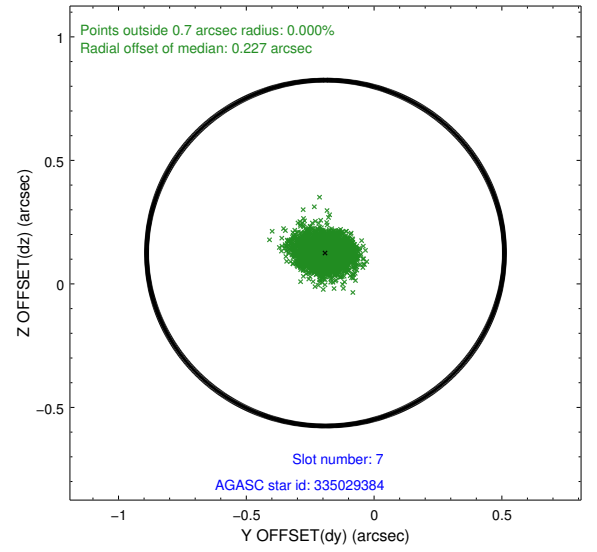
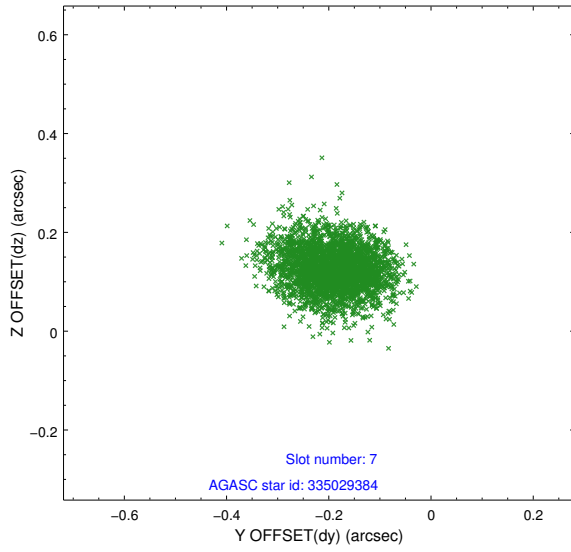
2.4.3 Slot 5



2.4.4 Slot 6

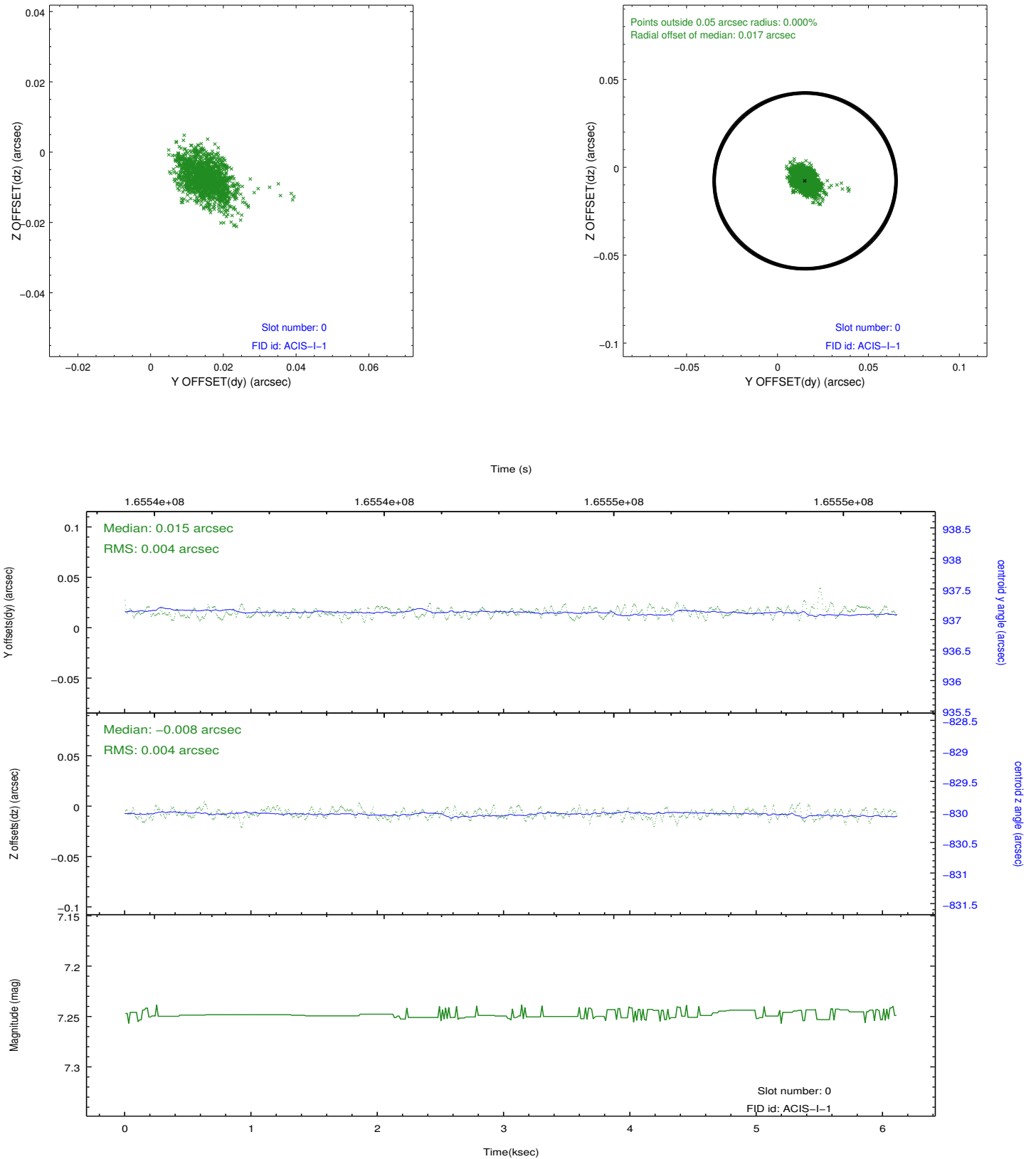


2.4.5 Slot 7

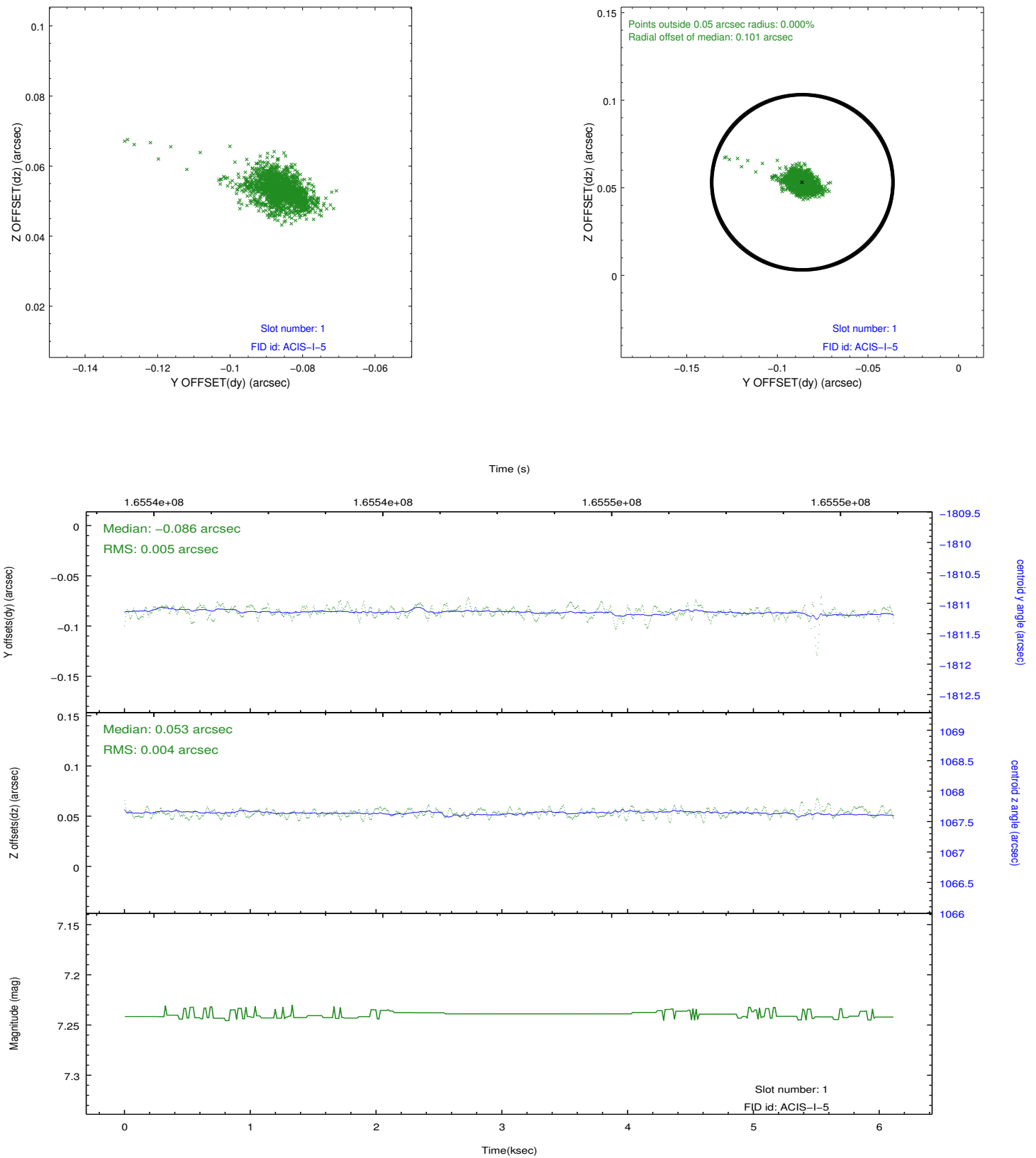


2.5 FID Slots

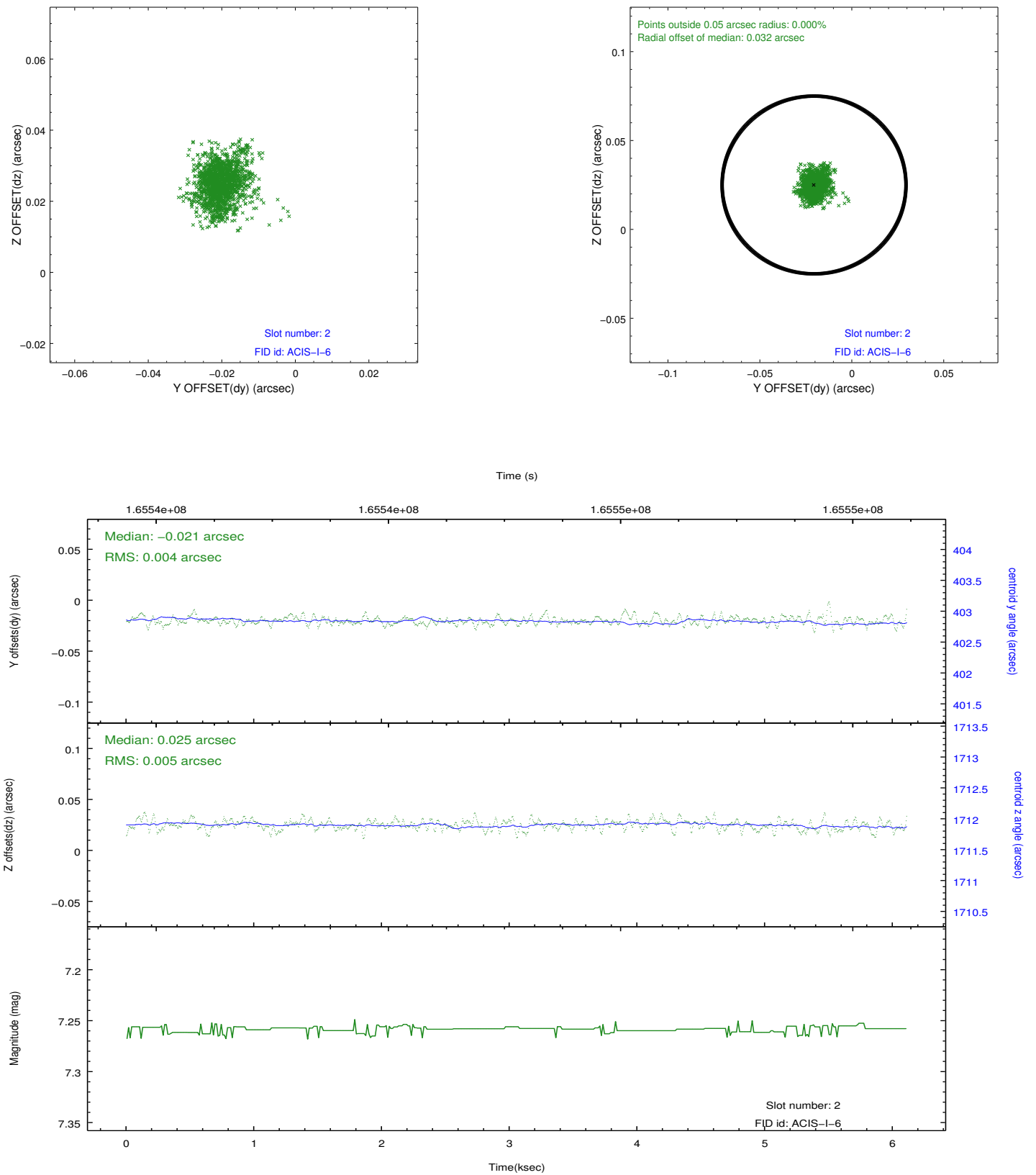
2.5.1 Slot 0



2.5.2 Slot 1



2.5.3 Slot 2



A Summary

A.1 Status

V&V Scientist	Jen Lauer
V&V Date (YYYY-MM-DD)	2012.11.09
V&V Edition	1
V&V Disposition and Status	OK
V&V Charge Time	5.02

A.2 Comments