

V&V Reference Report

L2 ASCDS Version : 7.6.8

Observation 4048 - L2 Version 001
Chandra X-Ray Center

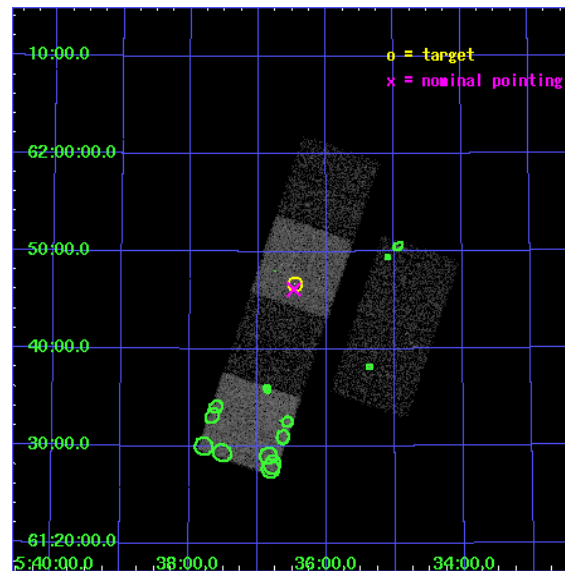
L2 Processing Date : Jul 6 2006

Contents

1	Front	2
2	OBI	3
2.1	OBI	3
2.1.1	Images	3
2.1.2	Bias	3
2.1.3	Parameters	4
2.1.4	Events	4
2.2	Compared Parameters	5
2.3	Aspect	6
2.4	Star Slots	9
2.4.1	Slot 3	9
2.4.2	Slot 4	10
2.4.3	Slot 5	11
2.4.4	Slot 6	12
2.4.5	Slot 7	13
2.5	FID Slots	14
2.5.1	Slot 0	14
2.5.2	Slot 1	15
2.5.3	Slot 2	16
3	Point Sources	17
A	Summary	18
A.1	Status	18
A.2	Comments	18

1 Front

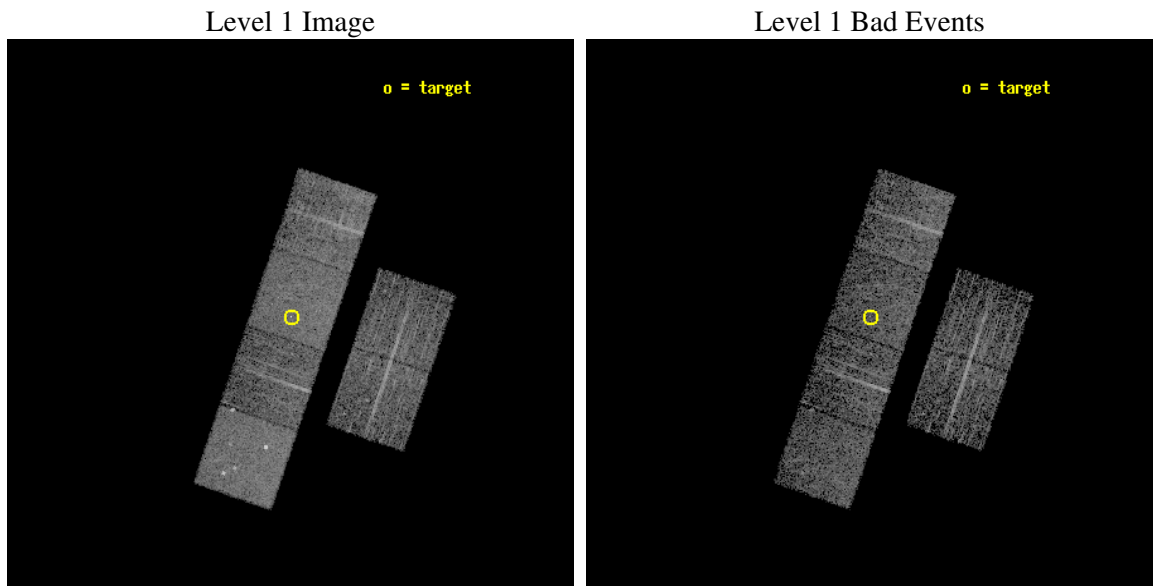
seq_num	700727
obs_id	4048
title	WHY DO WE SEE BROAD LINES IN X-RAY ABSORBED AGN?
observer	Dr. BELINDA WILKES
object	2MASS153628+614642
dtcycle	0
cycle	P
ra_targ	234.115417
dec_targ	61.77825
ra_nom	234.11859932281
dec_nom	61.768848001332
roll_nom	288.78250612438
revision	2
ontime	4207.999984324
livetime	4154.7157547691
ontime2	4207.999984324
ontime3	4207.999984324
ontime5	4207.999984324
ontime6	4207.999984324
ontime7	4207.999984324
ontime8	4204.7590140402
l2events	41293



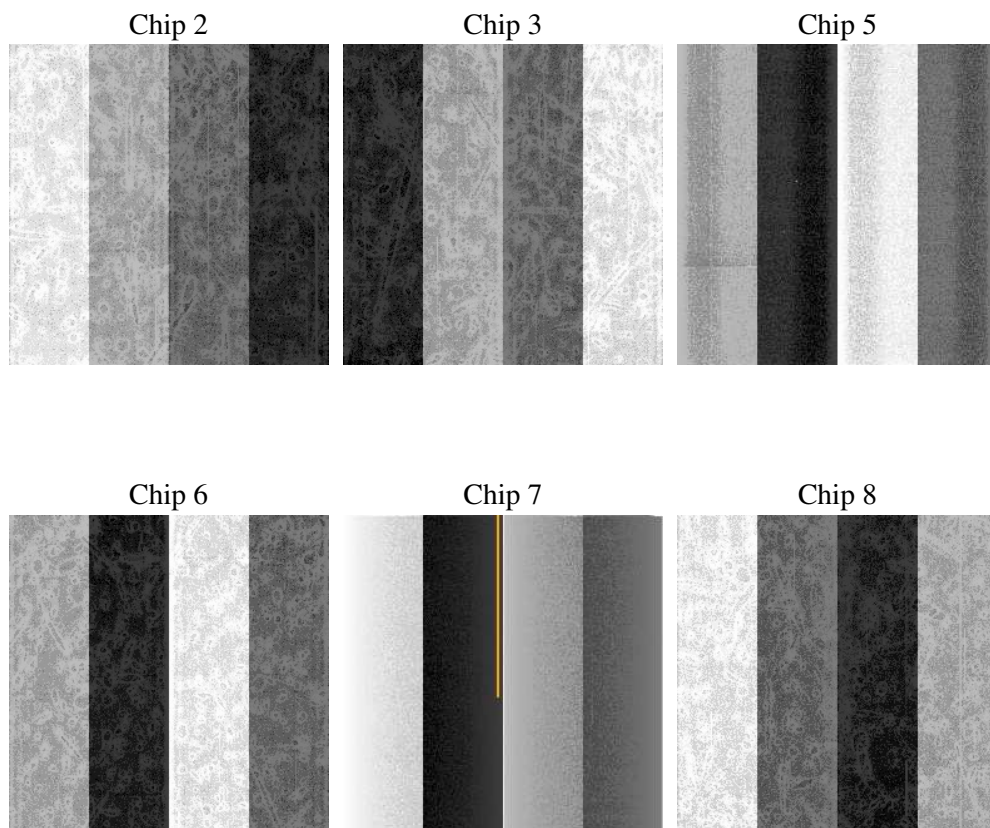
2 OBI

2.1 OBI

2.1.1 Images



2.1.2 Bias



2.1.3 Parameters

obi_num	0
ascdsver	7.6.8
caldsver	3.2.2
date	2006-07-06T03:51:50
revision	2

sched_exp_time	4450.000000
ontime	4210.0600801408
ontime2	4210.0600801408
ontime3	4210.0600801408
ontime5	4210.0600801408
ontime6	4210.0600801408
ontime7	4210.0600801408
ontime8	4206.8189803362
l1events	191902

2.1.4 Events

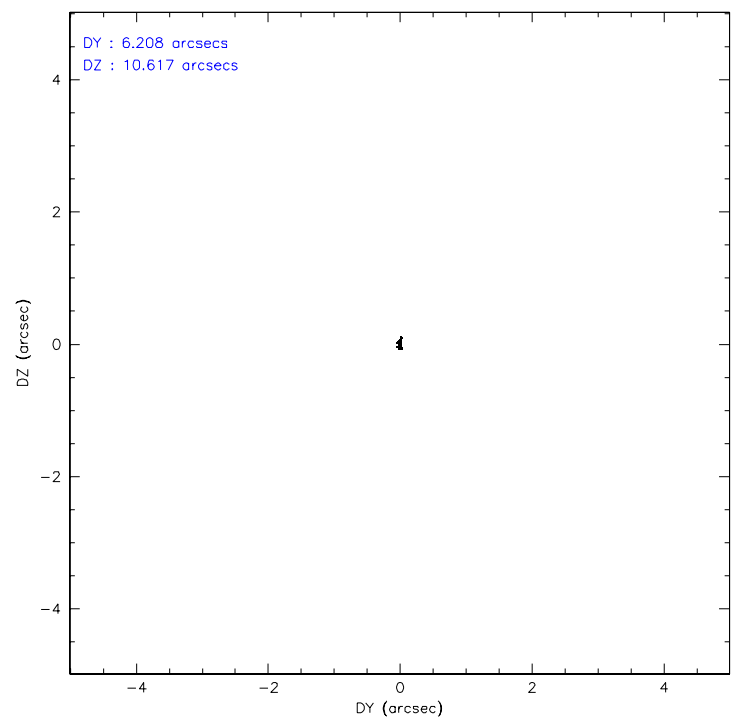
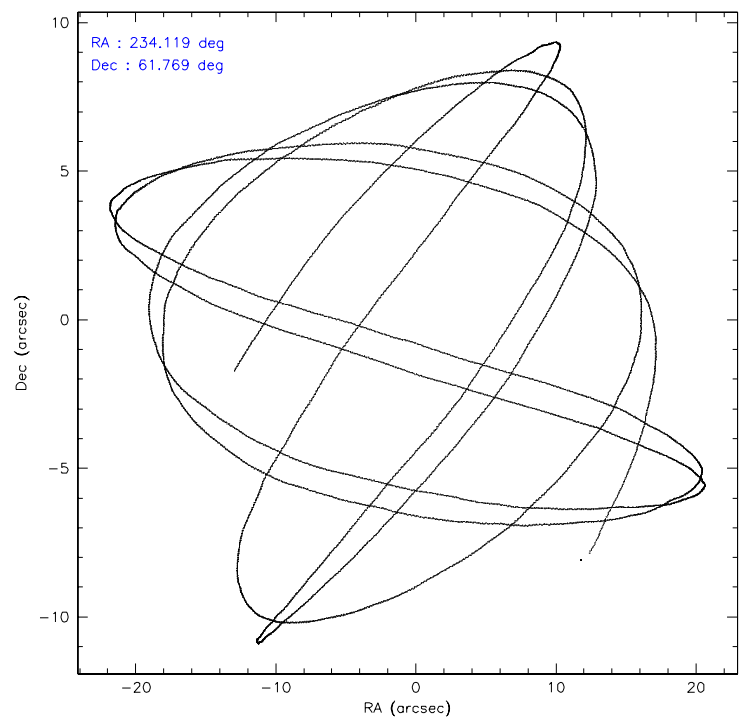
	ccd 2	ccd 3	ccd 5	ccd 6	ccd 7	ccd 8
level 1 events	26858	25650	40567	26318	36799	35710
rejected events	23660	22586	21860	23185	22564	28841
rejected %	88%	88%	53%	88%	61%	80%

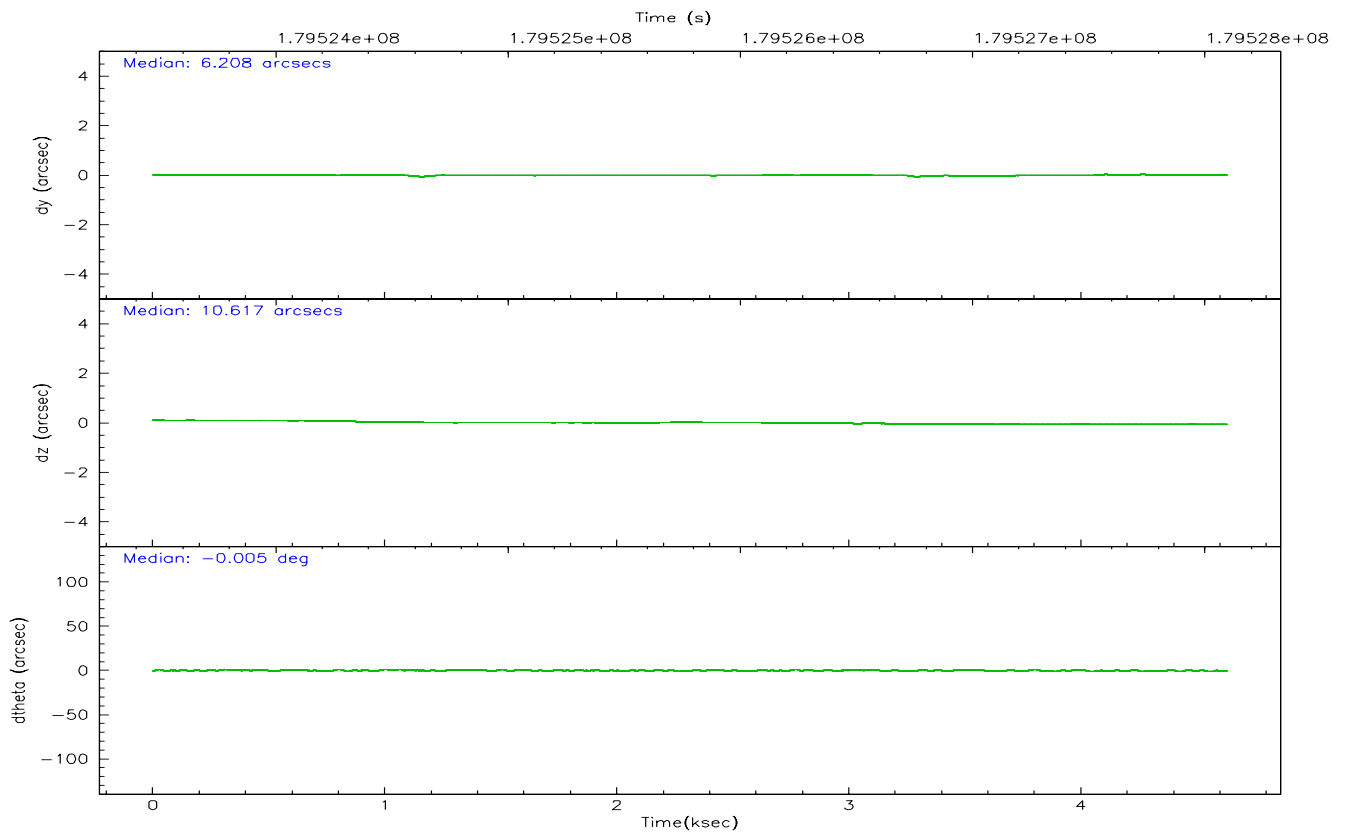
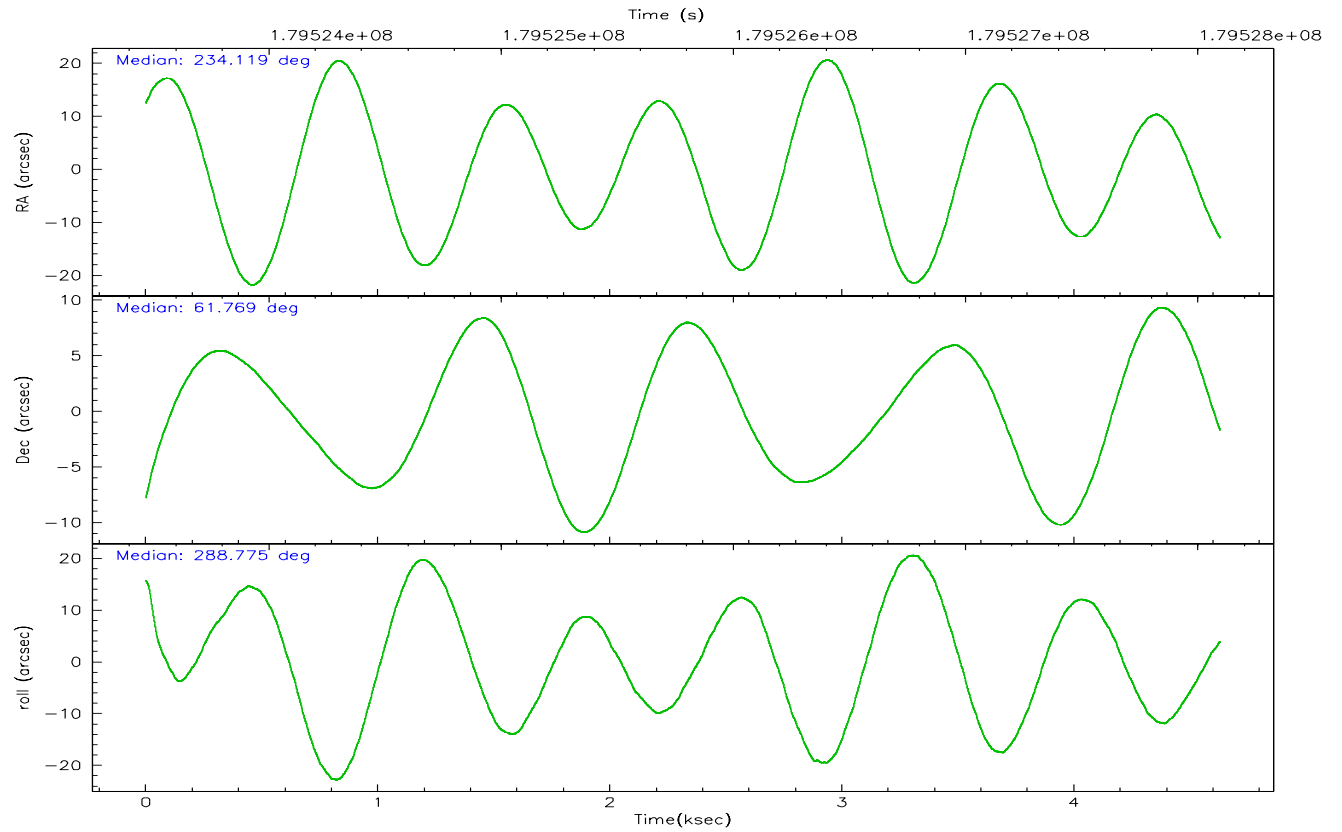
	ccd 2	ccd 3	ccd 5	ccd 6	ccd 7	ccd 8
grade 0 events	1493	1346	2539	1227	989	2024
	5%	5%	6%	4%	2%	5%
grade 1 events	20	17	123	8	18	34
	0%	0%	0%	0%	0%	0%
grade 2 events	631	566	5407	662	3416	1531
	2%	2%	13%	2%	9%	4%
grade 3 events	279	306	412	323	795	724
	1%	1%	1%	1%	2%	2%
grade 4 events	282	296	444	286	730	698
	1%	1%	1%	1%	1%	1%
grade 5 events	1051	1122	1952	1181	2369	1545
	3%	4%	4%	4%	6%	4%
grade 6 events	516	552	9926	636	8313	1894
	1%	2%	24%	2%	22%	5%
grade 7 events	22586	21445	19764	21995	20169	27260
	84%	83%	48%	83%	54%	76%

2.2 Compared Parameters

Parameter	Planned	Actual	Parameter	Planned	Actual
Instrument	ACIS	ACIS	Obspar format version number	6	6
Detector	ACIS-235678	ACIS-235678	Obspar file type	PREDICTED	ACTUAL
Grating	NONE	NONE	Obspar update status	NONE	UPDATED
Data mode	FAINT	FAINT	On-chip summing requested	N	N
Observation mode	POINTING	POINTING	Subarray requested	NONE	NONE
Pointing RA	234.074668	234.1185993228135	Alternating exposures requested	N	N
Pointing Dec	61.786339	61.76884800133243	Primary exposure time	0.000000	3.2
Pointing Roll	288.664546	288.782506124376			
SIM focus pos (mm)	-0.684267	-0.6828225247311905			
SIM defocus (mm)	0	0.001444936568705701			
SIM translation stage pos (mm)	-190.132523	-190.1400660498719			
SIM translation stage offset (mm)	0	0.00754346686406393			
Observation start time	179523653.184000	179523064.38811			
Observation start date	2003-09-09T19:39:49	2003-09-09T19:31:04			
Observation end time	179528103.184000	179528495.35084			
Observation end date	2003-09-09T20:53:59	2003-09-09T21:01:35			
Read mode	TIMED	TIMED			

2.3 Aspect



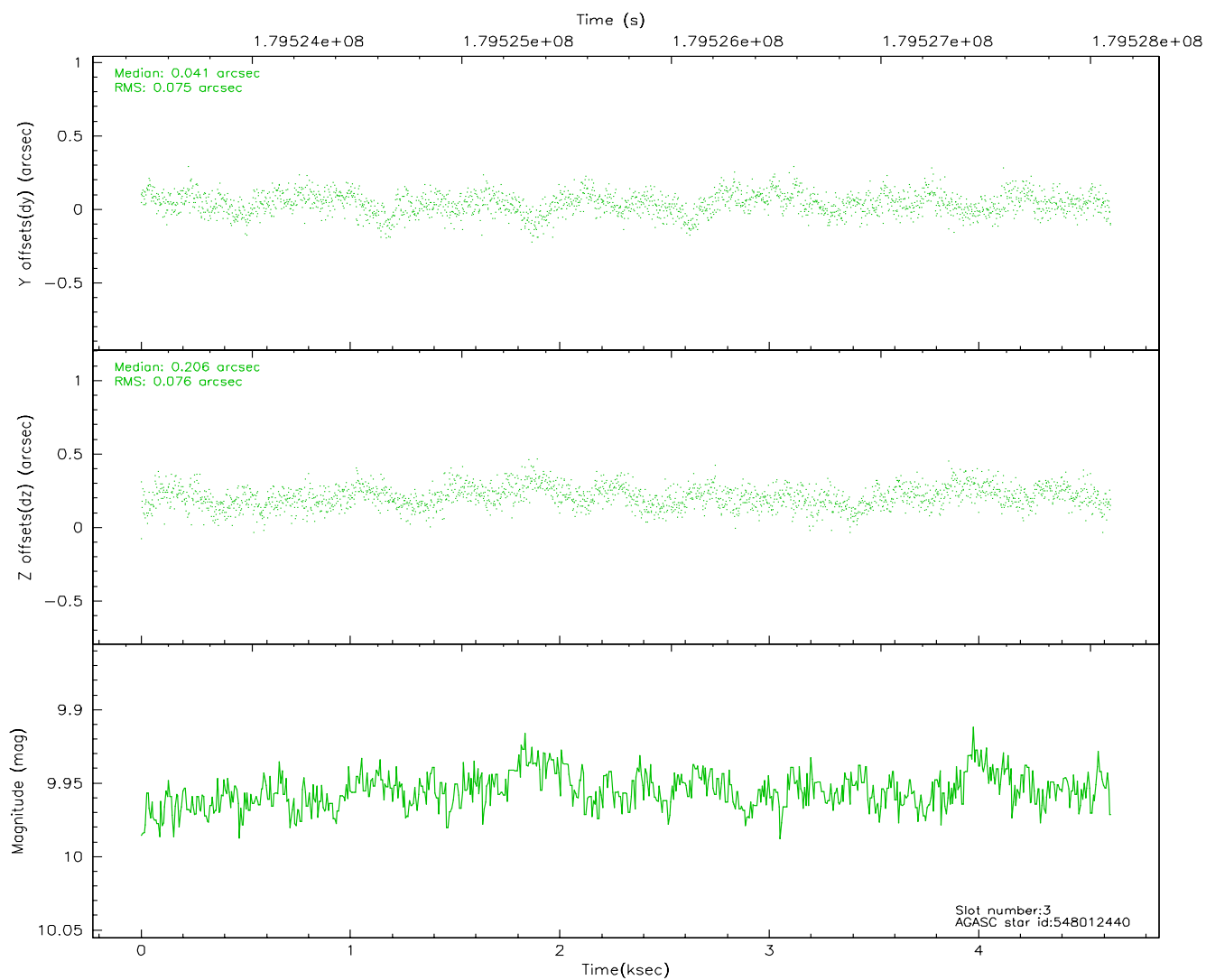
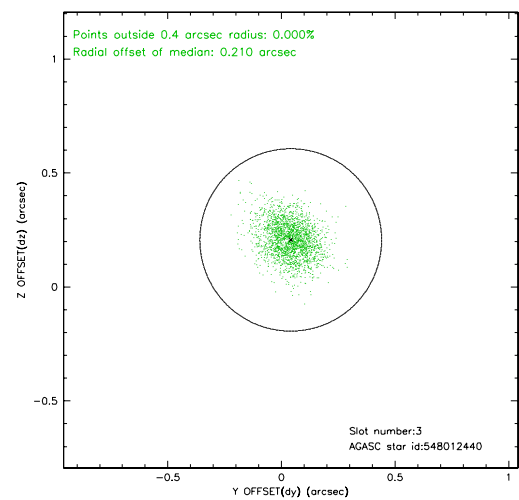
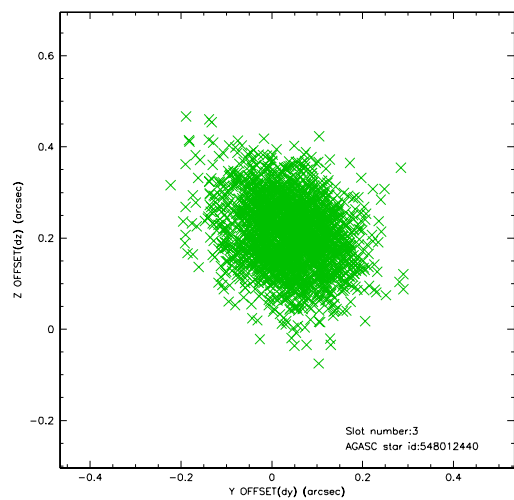


Slot Statistics

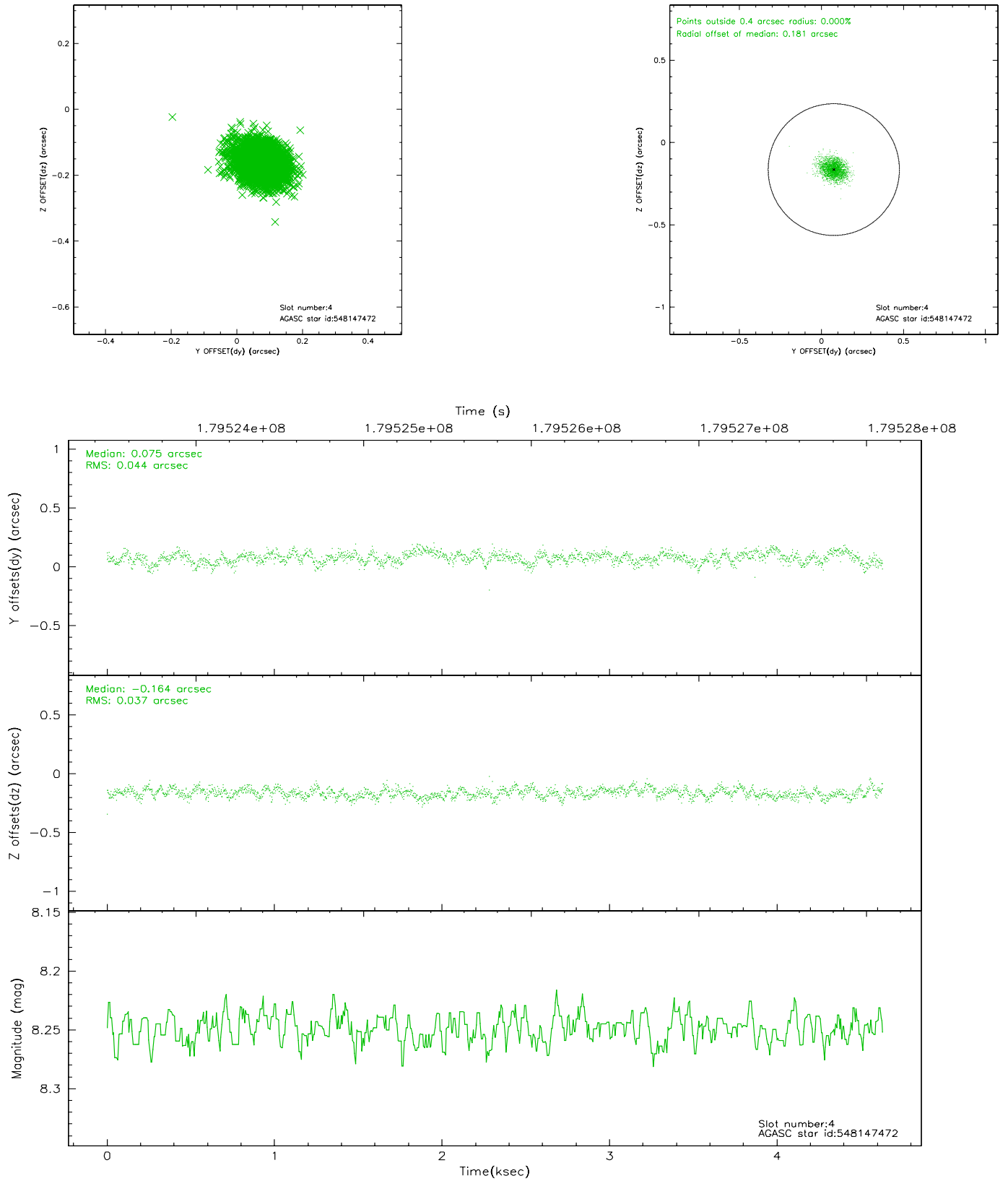
slot	status	id	mag	n_pts	med_dy	med_dz	dr1	dr2	ra	dec	mean_y	mean_z
0	FID	ACIS-S-2	7.09	1130	-0.048	0.017	0.006	0.011	0.000000	0.000000	-758.96	-1731.88
1	FID	ACIS-S-4	7.20	1130	0.019	0.019	0.005	0.009	0.000000	0.000000	2153.76	175.28
2	FID	ACIS-S-5	7.23	1130	-0.003	-0.027	0.006	0.011	0.000000	0.000000	-1810.08	170.36
3	GUIDE	548012440	9.96	2260	0.041	0.206	0.112	0.187	233.796469	61.979149	-808.36	-223.33
4	GUIDE	548147472	8.25	2260	0.075	-0.164	0.061	0.099	234.523755	61.420419	1493.12	311.31
5	GUIDE	548149344	9.52	2259	-0.006	-0.138	0.111	0.176	235.126745	62.360708	-1409.19	2330.59
6	GUIDE	548150728	8.61	2260	-0.048	0.033	0.075	0.114	234.994476	61.549361	1302.31	1226.11
7	GUIDE	548152728	8.41	2259	-0.062	0.060	0.073	0.122	235.137213	61.880754	241.85	1821.87

2.4 Star Slots

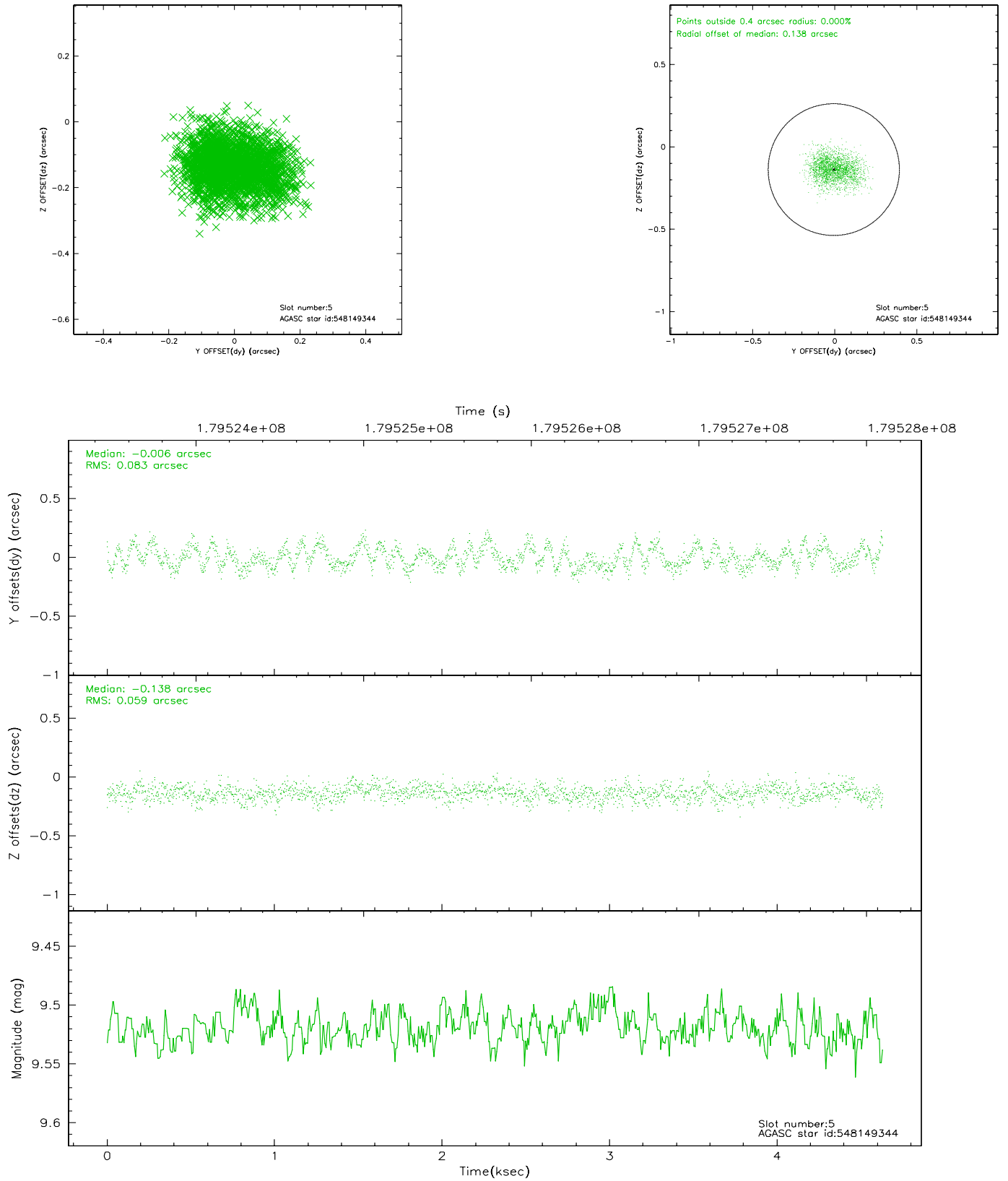
2.4.1 Slot 3



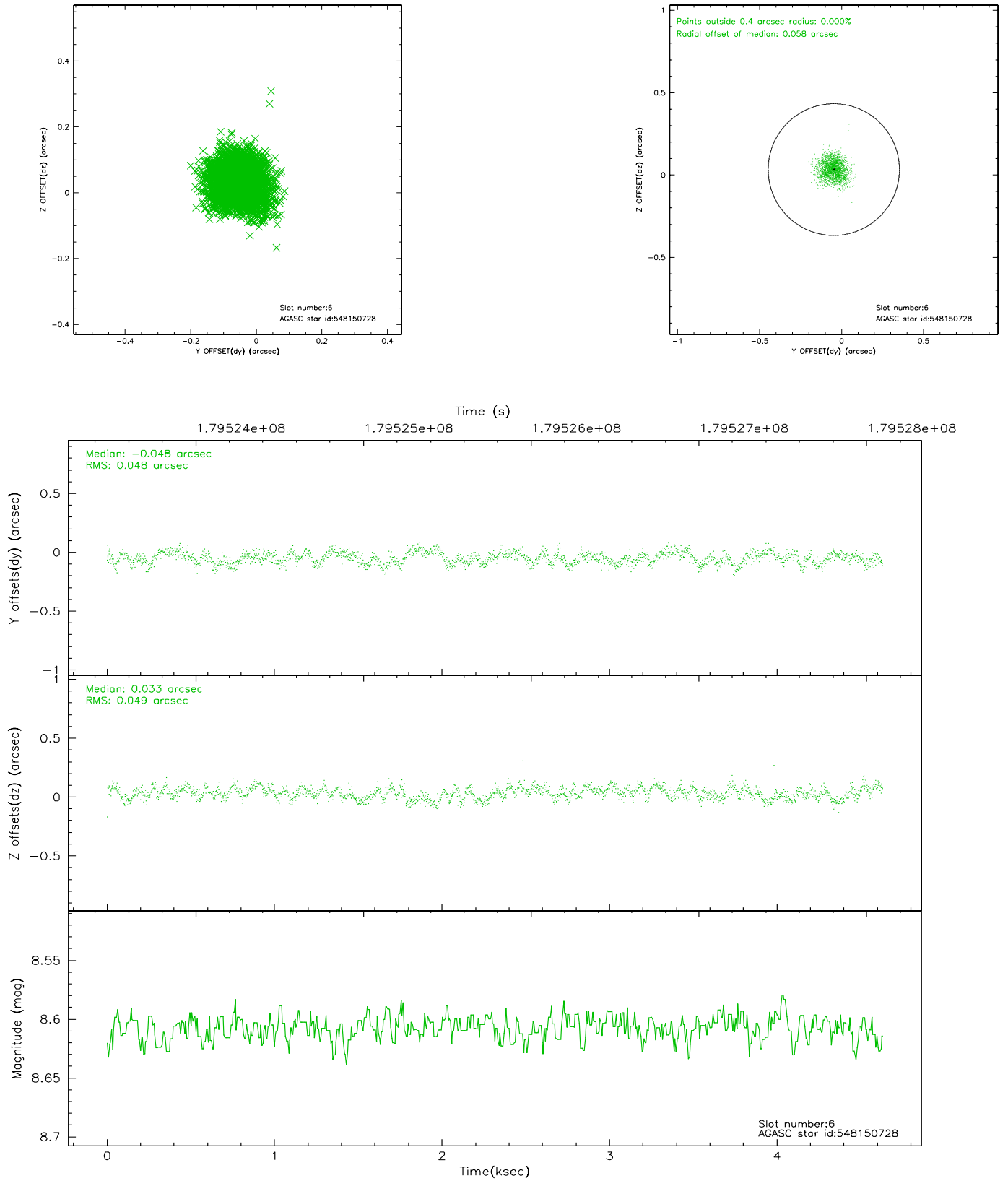
2.4.2 Slot 4



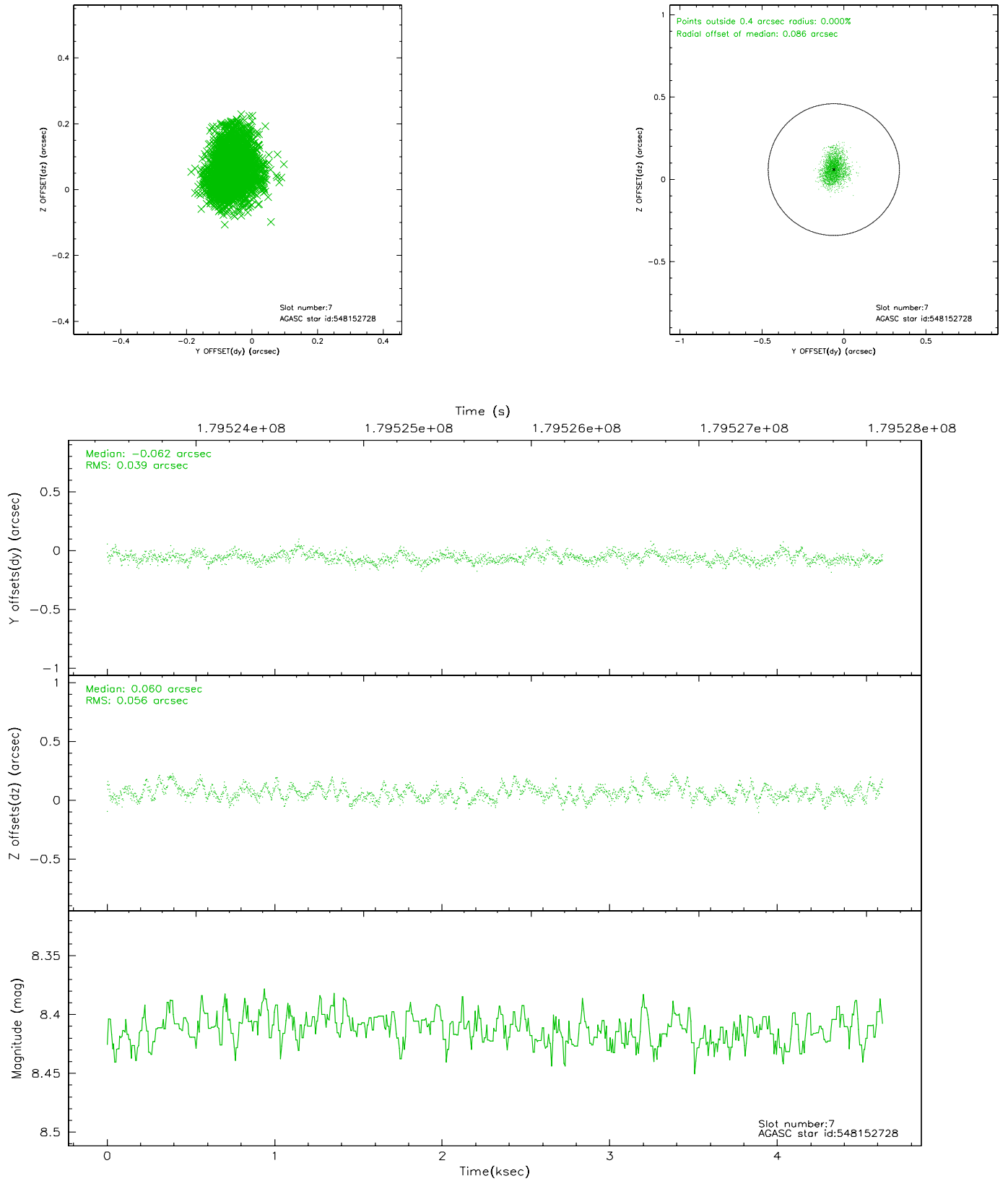
2.4.3 Slot 5



2.4.4 Slot 6

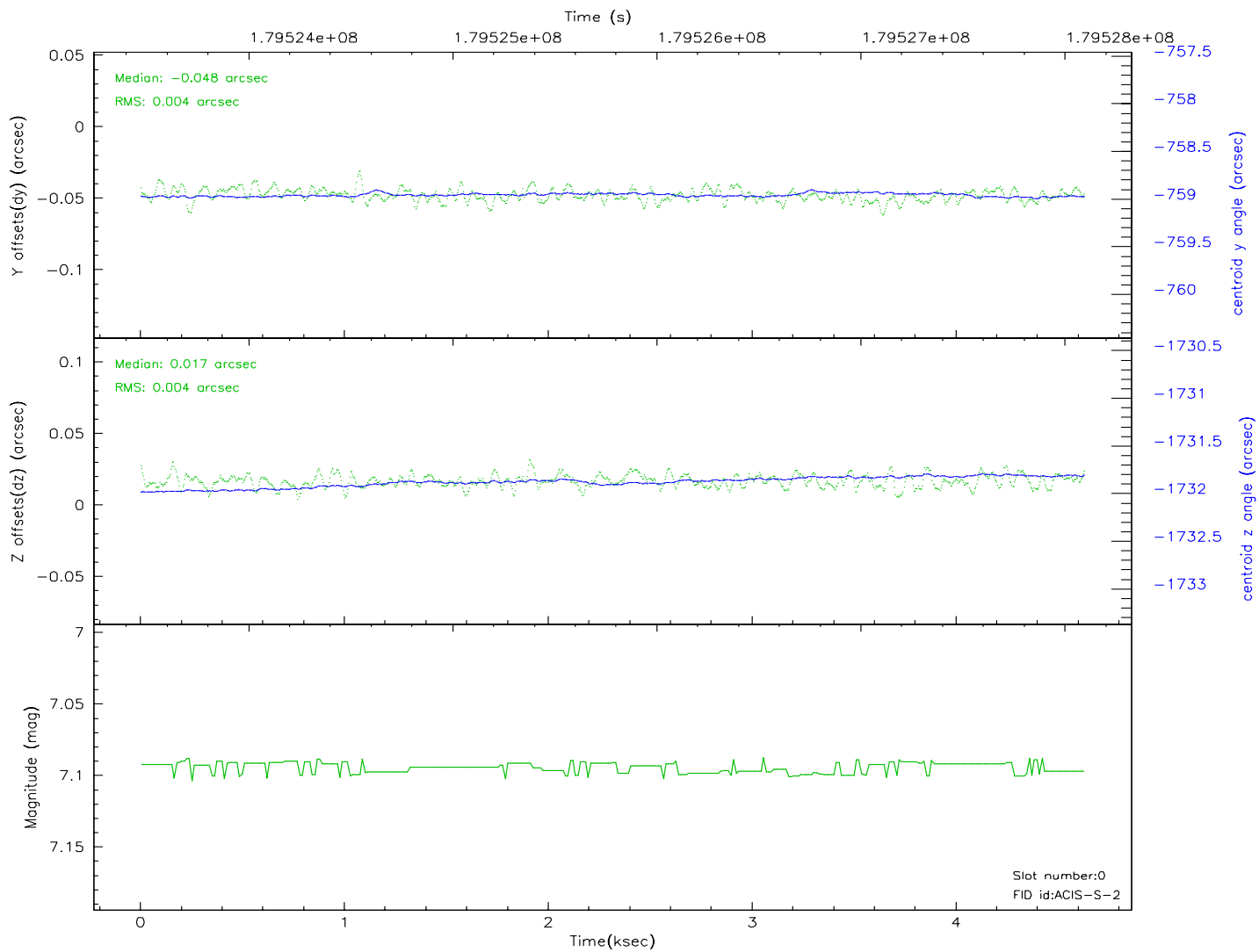
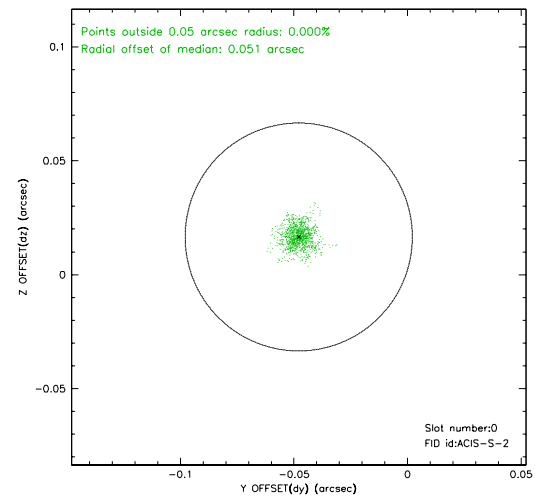
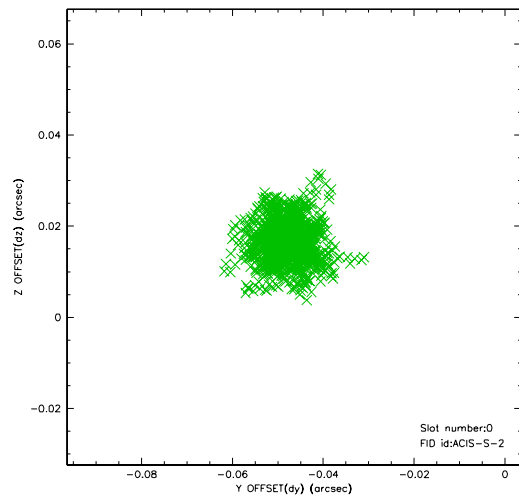


2.4.5 Slot 7

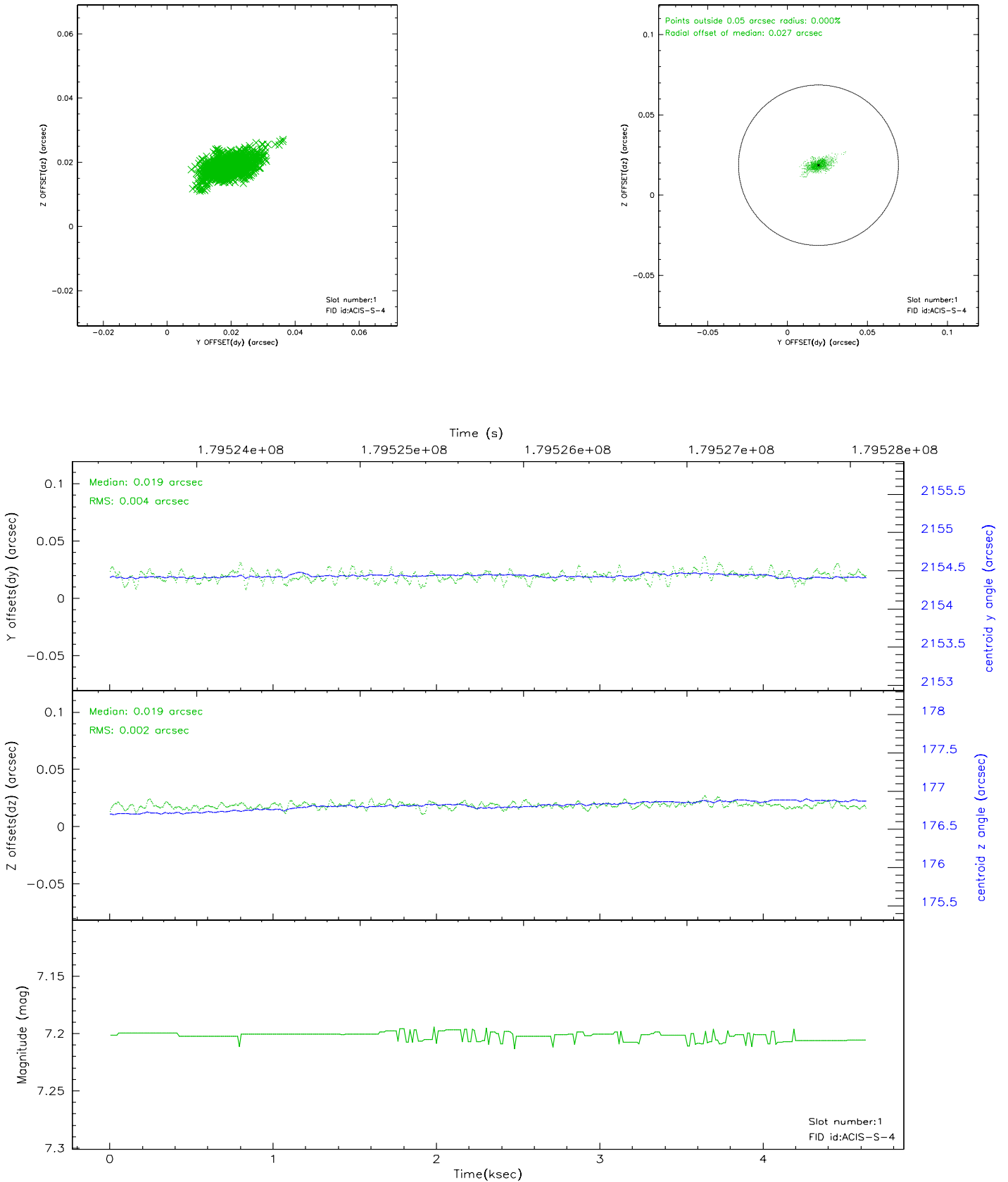


2.5 FID Slots

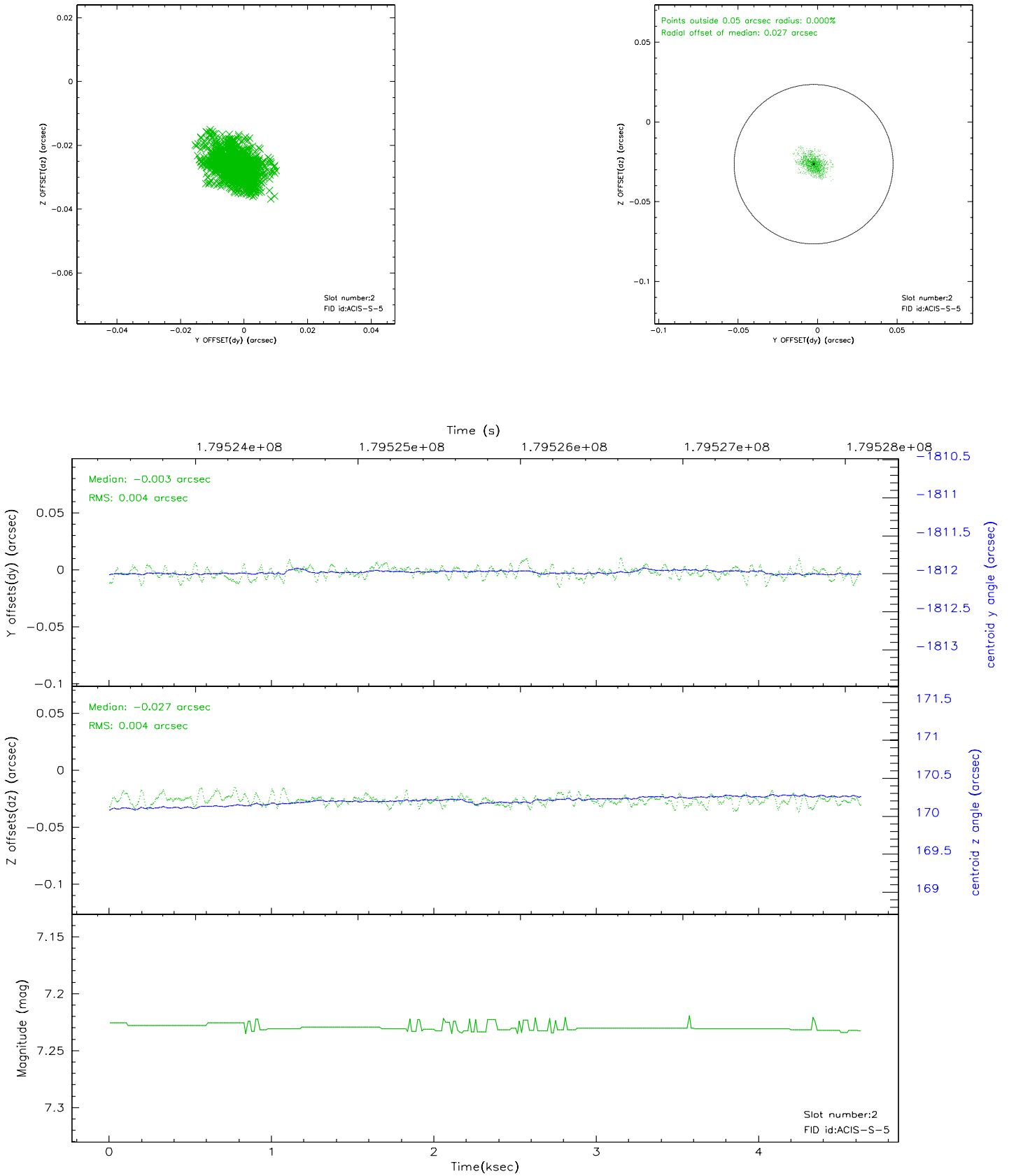
2.5.1 Slot 0



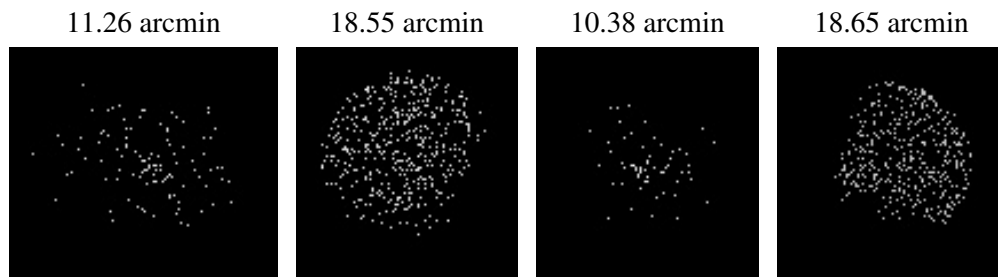
2.5.2 Slot 1



2.5.3 Slot 2



3 Point Sources



A Summary

A.1 Status

V&V Scientist	Beth Sundheim
V&V Date (YYYY-MM-DD)	2006.07.06
V&V Edition	1
V&V Disposition and Status	OK
V&V Charge Time	4.207

A.2 Comments