

V&V Reference Report

L2 ASCDS Version : 8.5.1.1

Observation 398 - L2 Version 4
Chandra X-Ray Center

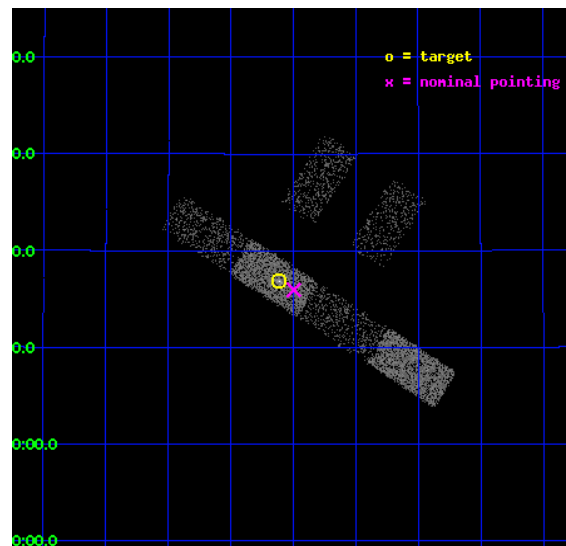
L2 Processing Date : Jan 15 2013

Contents

1	Front	2
2	OBI	3
2.1	OBI	3
2.1.1	Images	3
2.1.2	Bias	3
2.1.3	Parameters	4
2.1.4	Events	4
2.2	Compared Parameters	5
2.3	Aspect	6
2.4	Star Slots	9
2.4.1	Slot 4	9
2.4.2	Slot 5	10
2.4.3	Slot 6	11
2.5	FID Slots	12
2.5.1	Slot 0	12
2.5.2	Slot 1	13
2.5.3	Slot 2	14
A	Summary	15
A.1	Status	15
A.2	Comments	15

1 Front

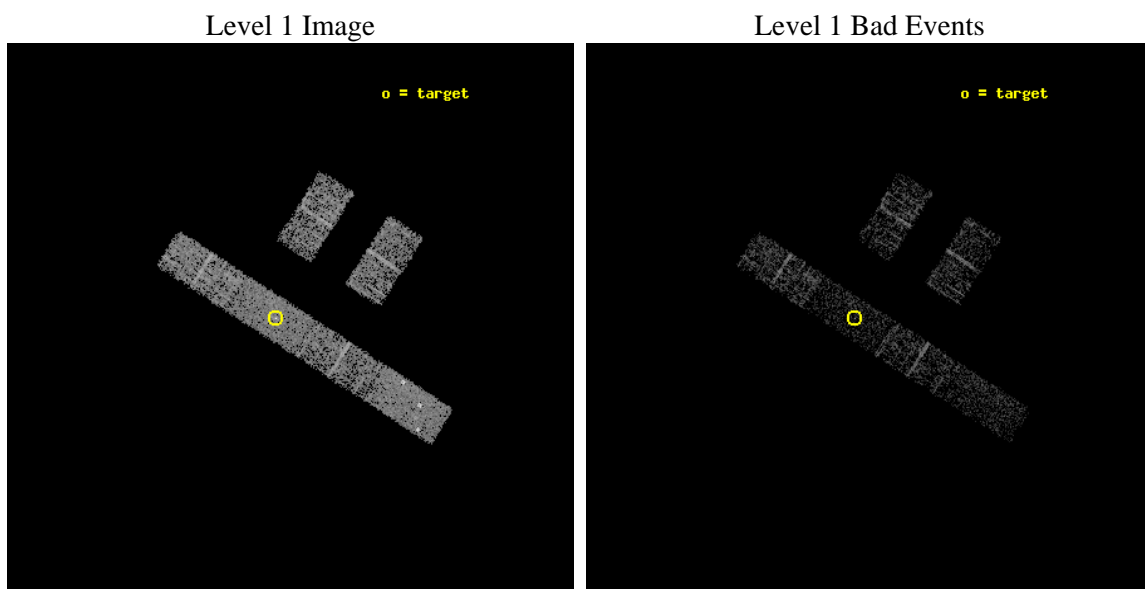
seq_num	700070	Sequence number
obs_id	398	Observation id
title	LOW-LUMINOSITY ACTIVE GALACTIC NUCLEI IN NEARBY GALAXIES	Proposal
observer	Professor Gordon Garmire	Principal investigator
object	NGC 4278	Source name
dtcycle	0	
cycle	P	events from which exps? Prim/Second/Both
ra_targ	185.028333	Observer's specified target RA [deg]
dec_targ	29.280556	Observer's specified target Dec [deg]
ra_nom	184.99897918118	Nominal RA [deg]
dec_nom	29.26609238657	Nominal Dec [deg]
roll_nom	212.74332249283	Nominal Roll [deg]
revision	4	Processing version of data
ontime	1532.7994033396	Sum of GTIs [s]
livetime	1498.6306250876	Livetime [s]
ontime2	1532.7173532695	Sum of GTIs [s]
ontime3	1530.794223249	Sum of GTIs [s]
ontime5	1532.7584131509	Sum of GTIs [s]
ontime6	1534.51732333	Sum of GTIs [s]
ontime7	1532.7994033396	Sum of GTIs [s]
ontime8	1536.5224734992	Sum of GTIs [s]
l2events	8924	Number of level 2 events



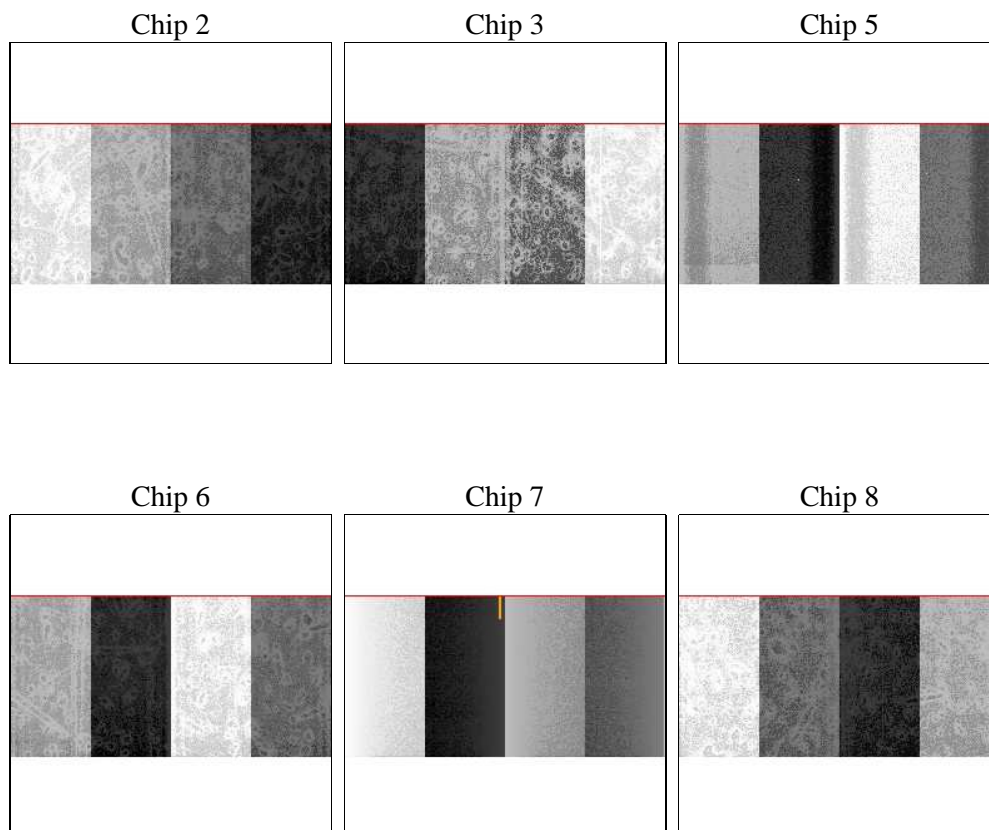
2 OBI

2.1 OBI

2.1.1 Images



2.1.2 Bias



2.1.3 Parameters

obi_num	0	Obi number	sched_exp_time	2000.000000	[s] Scheduled observation exposure time
ascdsver	8.5.1.1	Processing system revision	ontime	1532.7994033396	Sum of GTIs [s]
caldsver	4.5.5	 	ontime2	1532.7173532695	Sum of GTIs [s]
date	2013-01-15T18:28:14	Date and time of file creation	ontime3	1530.794223249	Sum of GTIs [s]
revision	4	Processing version of data	ontime5	1532.7584131509	Sum of GTIs [s]
			ontime6	1534.51732333	Sum of GTIs [s]
			ontime7	1532.7994033396	Sum of GTIs [s]
			ontime8	1536.5224734992	Sum of GTIs [s]
			l1events	43479	Number of level 1 events

2.1.4 Events

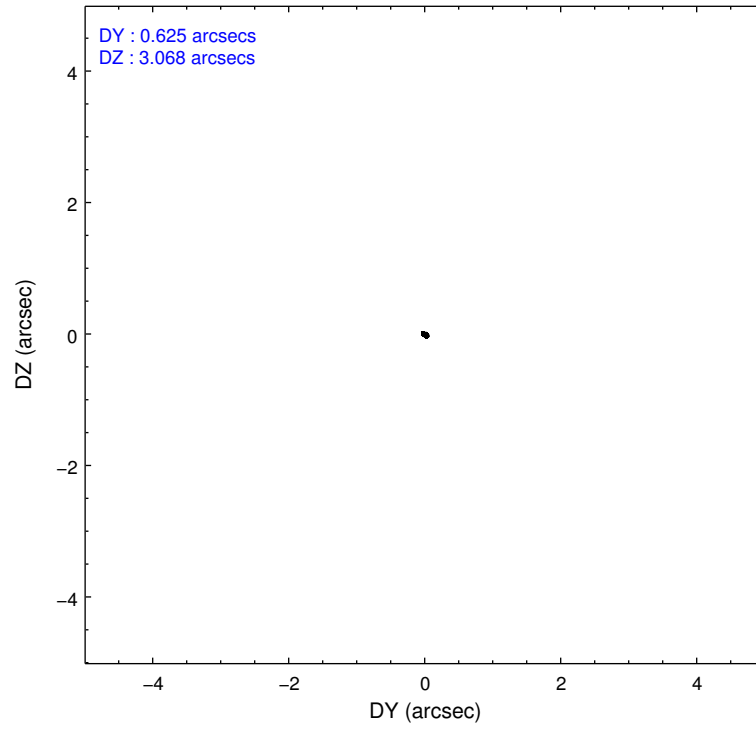
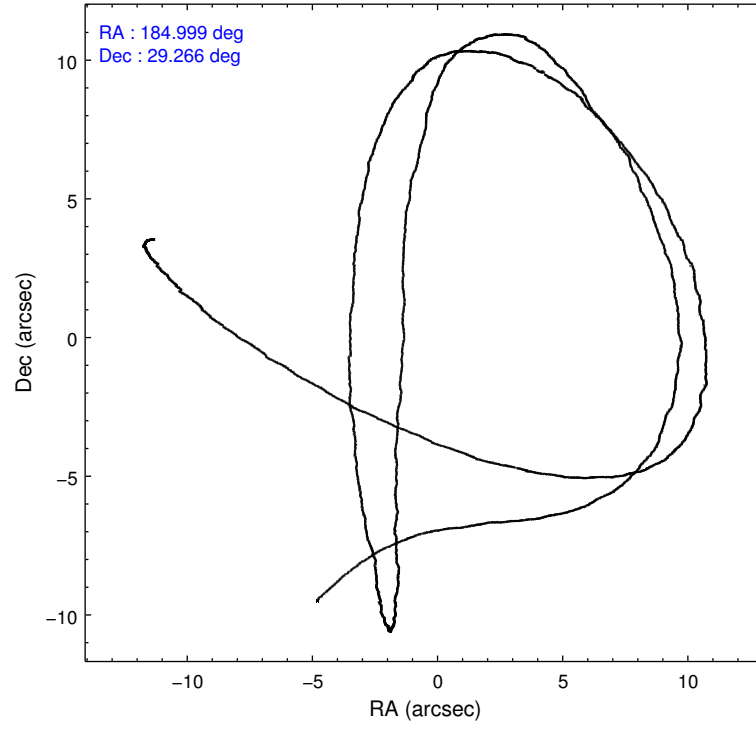
	ccd 2	ccd 3	ccd 5	ccd 6	ccd 7	ccd 8
level 1 events	6189	6518	8898	6300	7229	8345
rejected events	5599	5886	3929	5639	3712	6958
rejected %	90%	90%	44%	89%	51%	83%

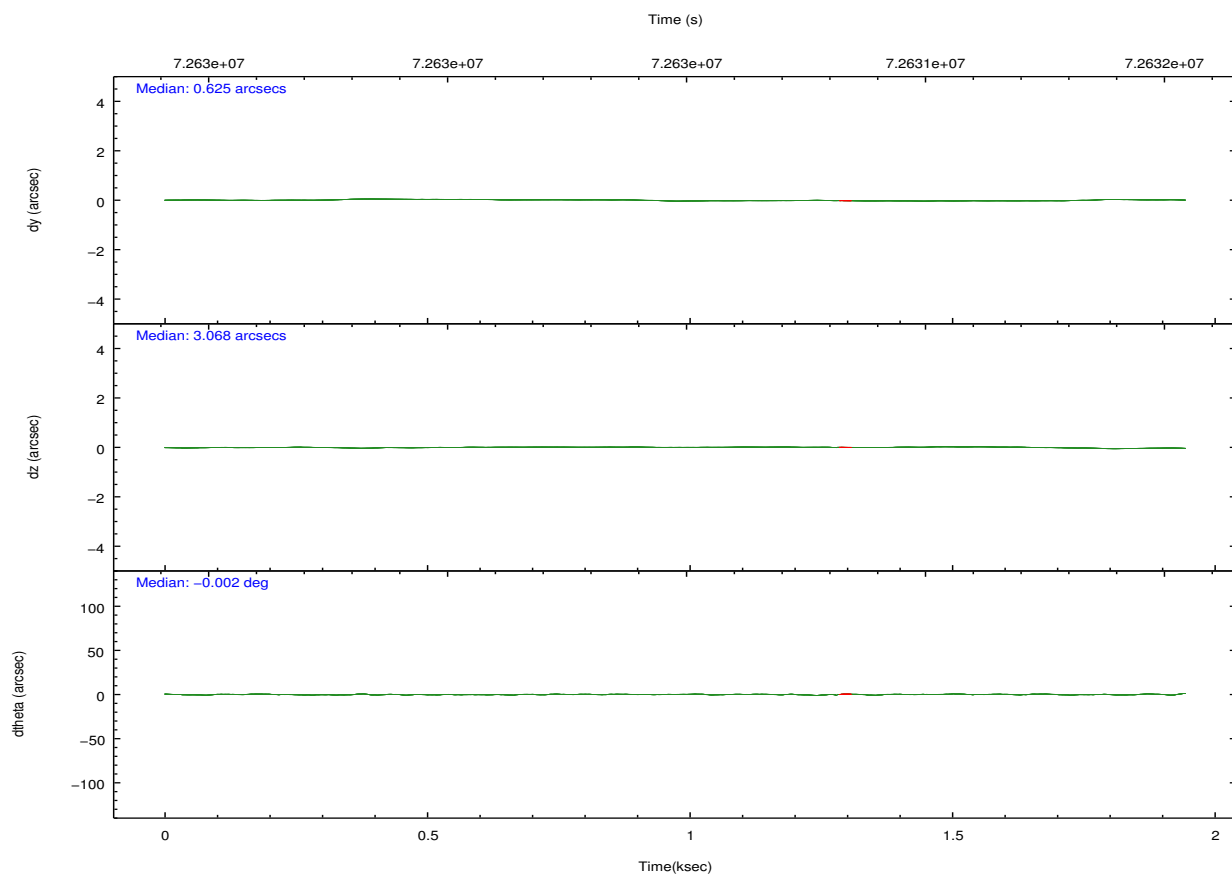
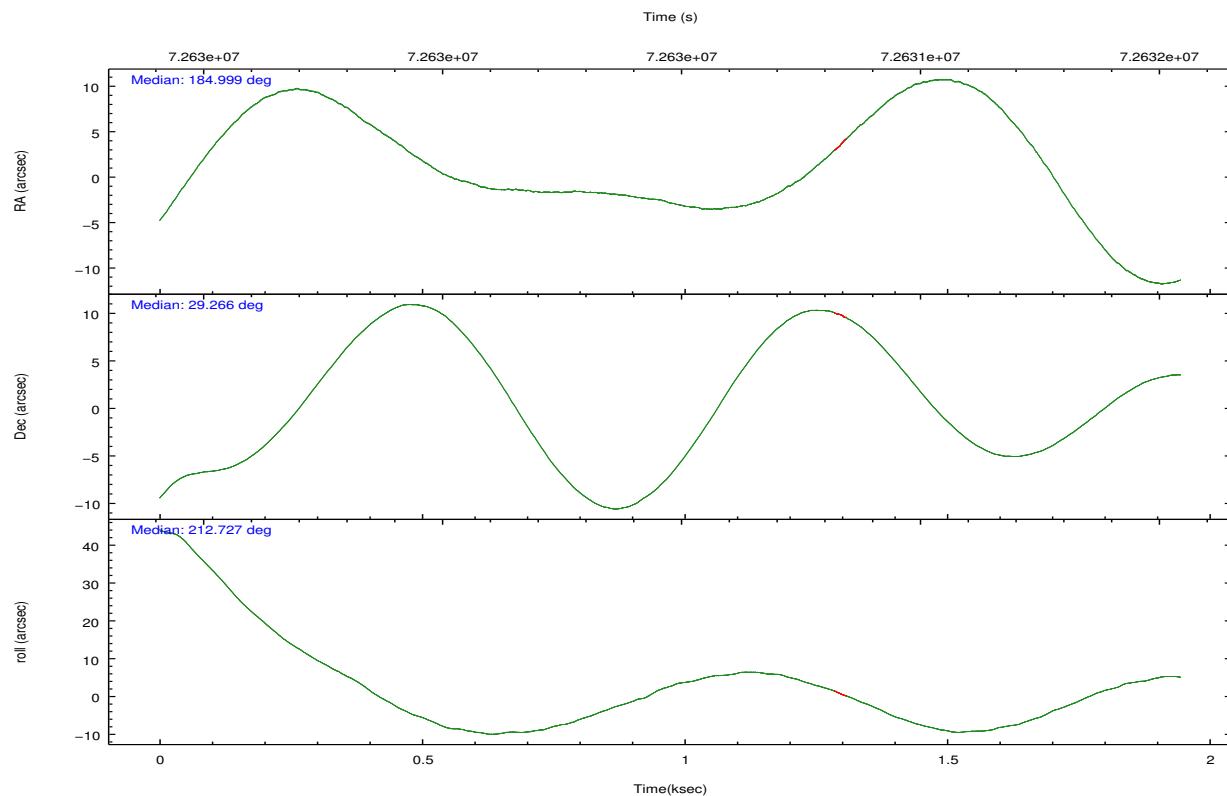
	ccd 2	ccd 3	ccd 5	ccd 6	ccd 7	ccd 8
grade 0 events	235	280	1725	275	525	485
	3%	4%	19%	4%	7%	5%
grade 1 events	1	1	21	1	7	3
	0%	0%	0%	0%	0%	0%
grade 2 events	122	115	1200	110	762	286
	1%	1%	13%	1%	10%	3%
grade 3 events	85	76	227	80	351	148
	1%	1%	2%	1%	4%	1%
grade 4 events	80	79	189	86	383	149
	1%	1%	2%	1%	5%	1%
grade 5 events	196	181	637	228	626	288
	3%	2%	7%	3%	8%	3%
grade 6 events	84	95	1698	115	1523	336
	1%	1%	19%	1%	21%	4%
grade 7 events	5386	5691	3201	5405	3052	6650
	87%	87%	35%	85%	42%	79%

2.2 Compared Parameters

Parameter	Planned	Actual	Parameter	Planned	Actual
Instrument	ACIS	ACIS	Obspar format version number	7	7
Detector	ACIS-235678	ACIS-235678	Obspar file type	PREDICTED	ACTUAL
Grating	NONE	NONE	Obspar update status	NONE	UPDATED
Data mode	FAINT	FAINT	Number of optional ACIS chips dropped	0	0
Observation mode	POINTING	POINTING	On-chip summing requested	N	N
[deg] Pointing RA	185.013188	184.9989791811835	Subarray requested	CUSTOM	1/2
[deg] Pointing Dec	29.290713	29.26609238657029	Subarray start row	255	255
[deg] Pointing Roll	212.579677	212.7433224928251	Subarray row count	512	512
[s] Window start time (MET)	63072064.184000	63072064.184000	Alternating exposures requested	N	N
[s] Window stop time (MET)	84153664.184000	84153664.184000	[s] Primary exposure time	0.000000	1.8
[mm] SIM focus pos	-0.684267	-0.6828225247311905			
[mm] SIM defocus	0	0.001444936568705701			
[mm] SIM translation stage pos	-190.132523	-190.1425803651734			
[mm] SIM translation stage offset	0	0.01005778216563158			
[s] Observation start time (MET)	72629448.184000	72629013.237918			
Observation start date	2000-04-20T14:49:44	2000-04-20T14:43:33			
[s] Observation end time (MET)	72631448.184000	72631890.41302399			
Observation end date	2000-04-20T15:23:04	2000-04-20T15:31:30			
Read mode	TIMED	TIMED			

2.3 Aspect



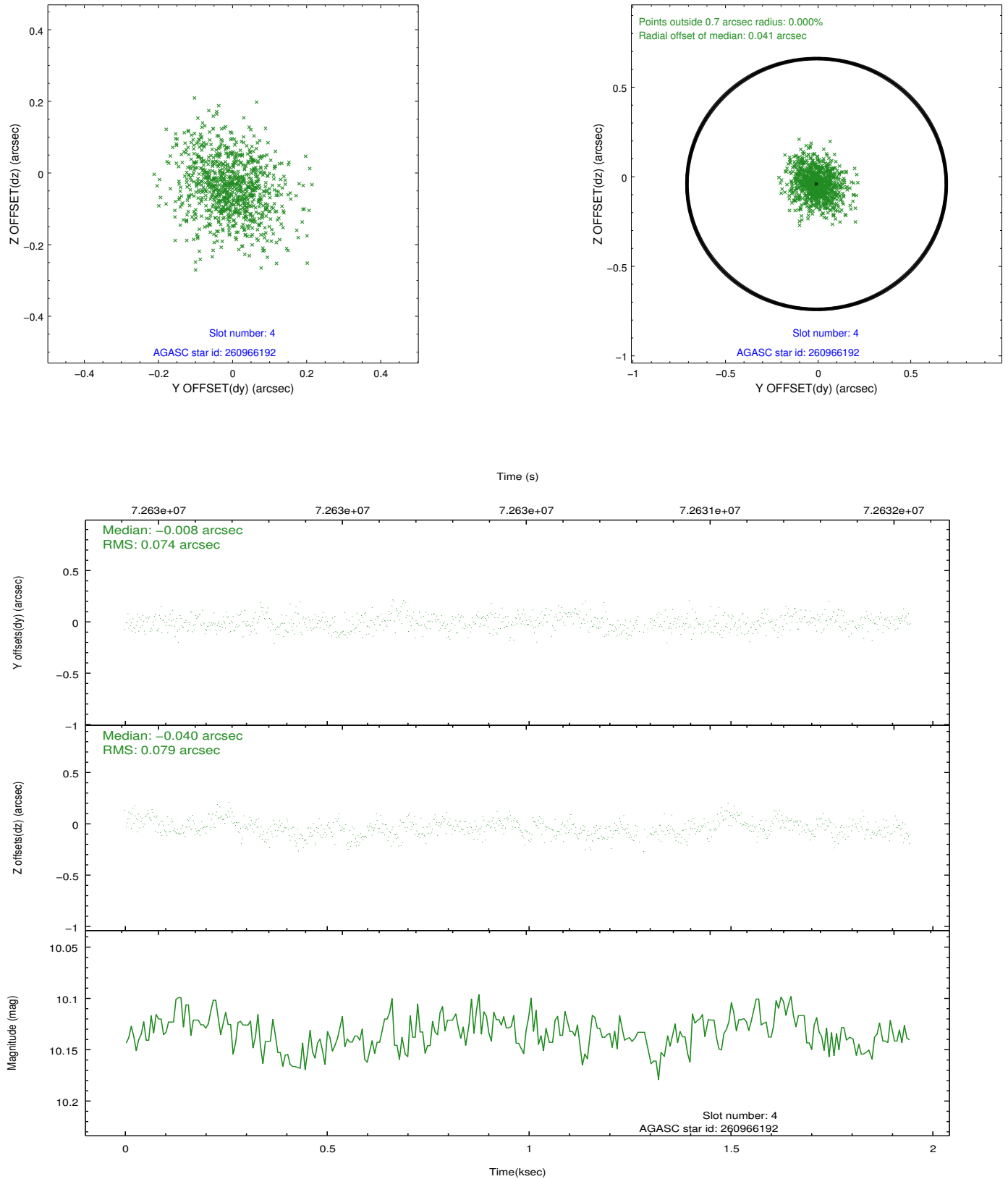


Slot Statistics

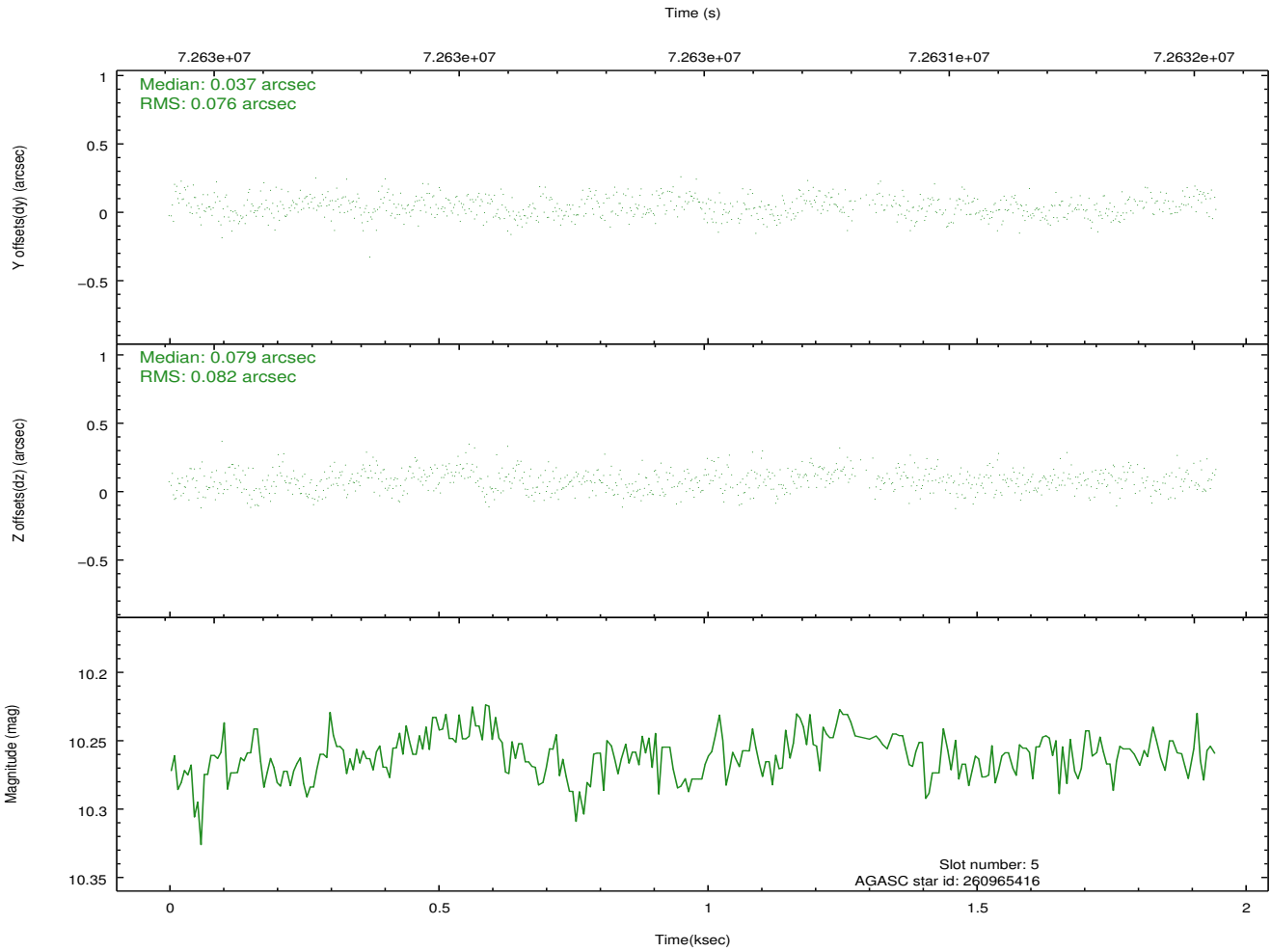
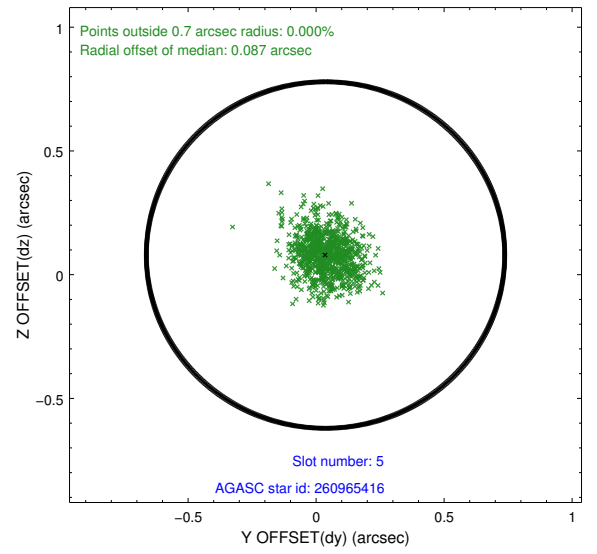
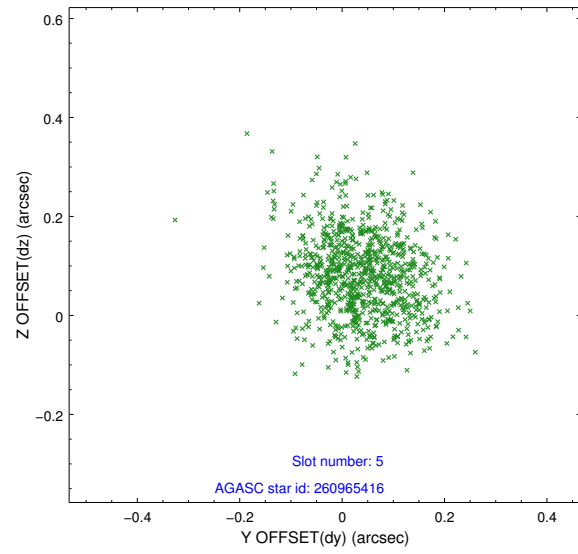
slot	status	id	mag	n_pts	med_dy	med_dz	dr1	dr2	ra	dec	mean_y	mean_z
0	FID	ACIS-S-2	7.11	459	-0.002	-0.000	0.006	0.011	0.000000	0.000000	-753.25	-1724.05
1	FID	ACIS-S-4	7.21	432	0.005	0.001	0.005	0.010	0.000000	0.000000	2158.41	180.53
2	FID	ACIS-S-5	6.99	443	-0.035	0.008	0.006	0.009	0.000000	0.000000	-1801.40	178.53
3	UNUSED		0.00	0	0.000	0.000	0.000	0.000	0.000000	0.000000	0.00	0.00
4	GUIDE	260966192	10.13	921	-0.008	-0.040	0.116	0.194	184.520973	29.027073	1816.70	-38.22
5	GUIDE	260965416	10.26	897	0.037	0.079	0.115	0.195	184.798422	29.200373	747.43	-91.09
6	GUIDE	260973208	7.02	915	-0.033	-0.036	0.069	0.111	184.960936	28.464352	1743.25	2416.70
7	UNUSED		0.00	0	0.000	0.000	0.000	0.000	0.000000	0.000000	0.00	0.00

2.4 Star Slots

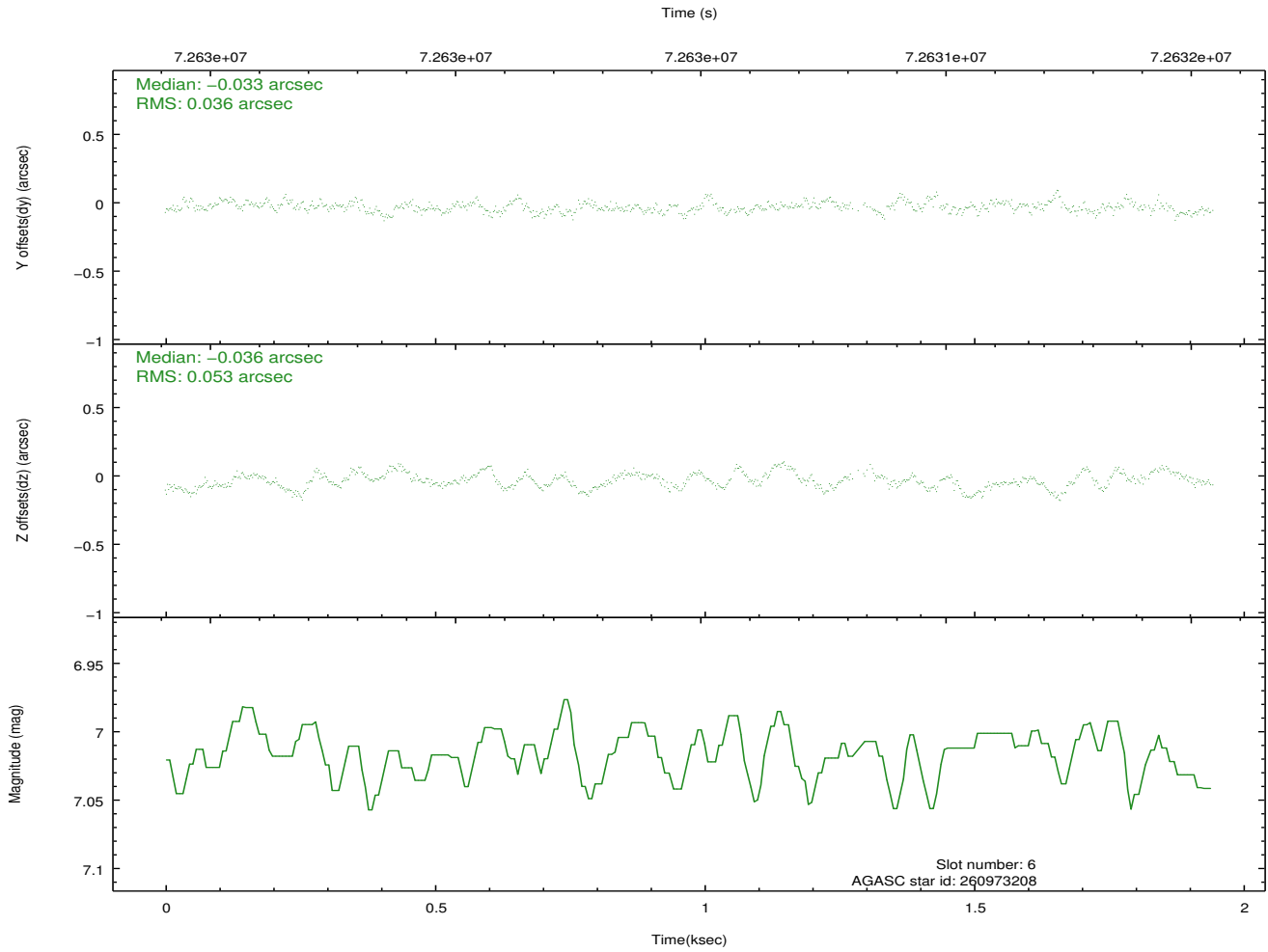
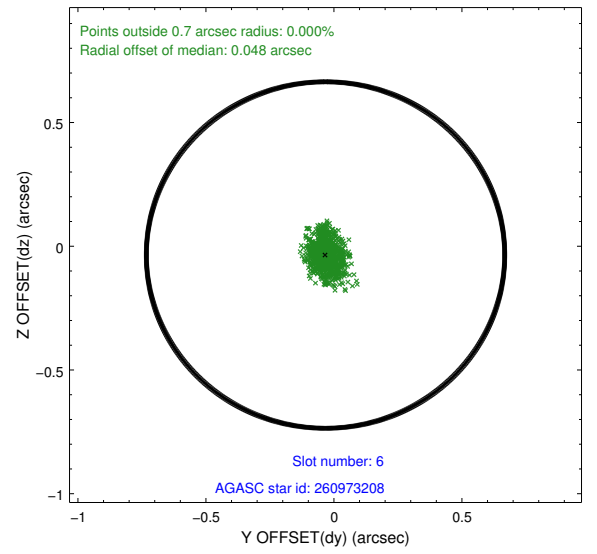
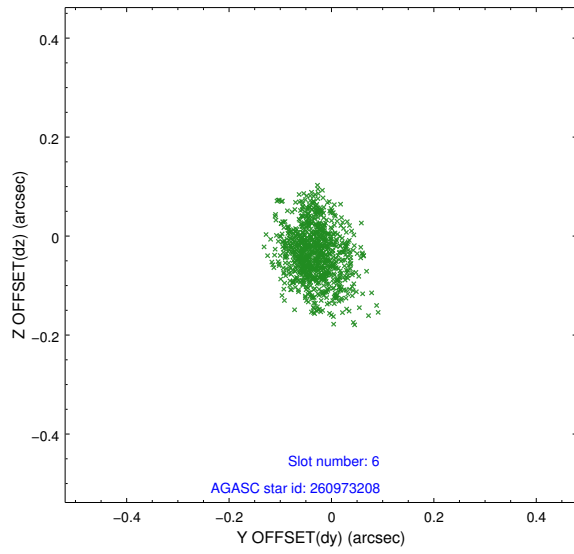
2.4.1 Slot 4



2.4.2 Slot 5

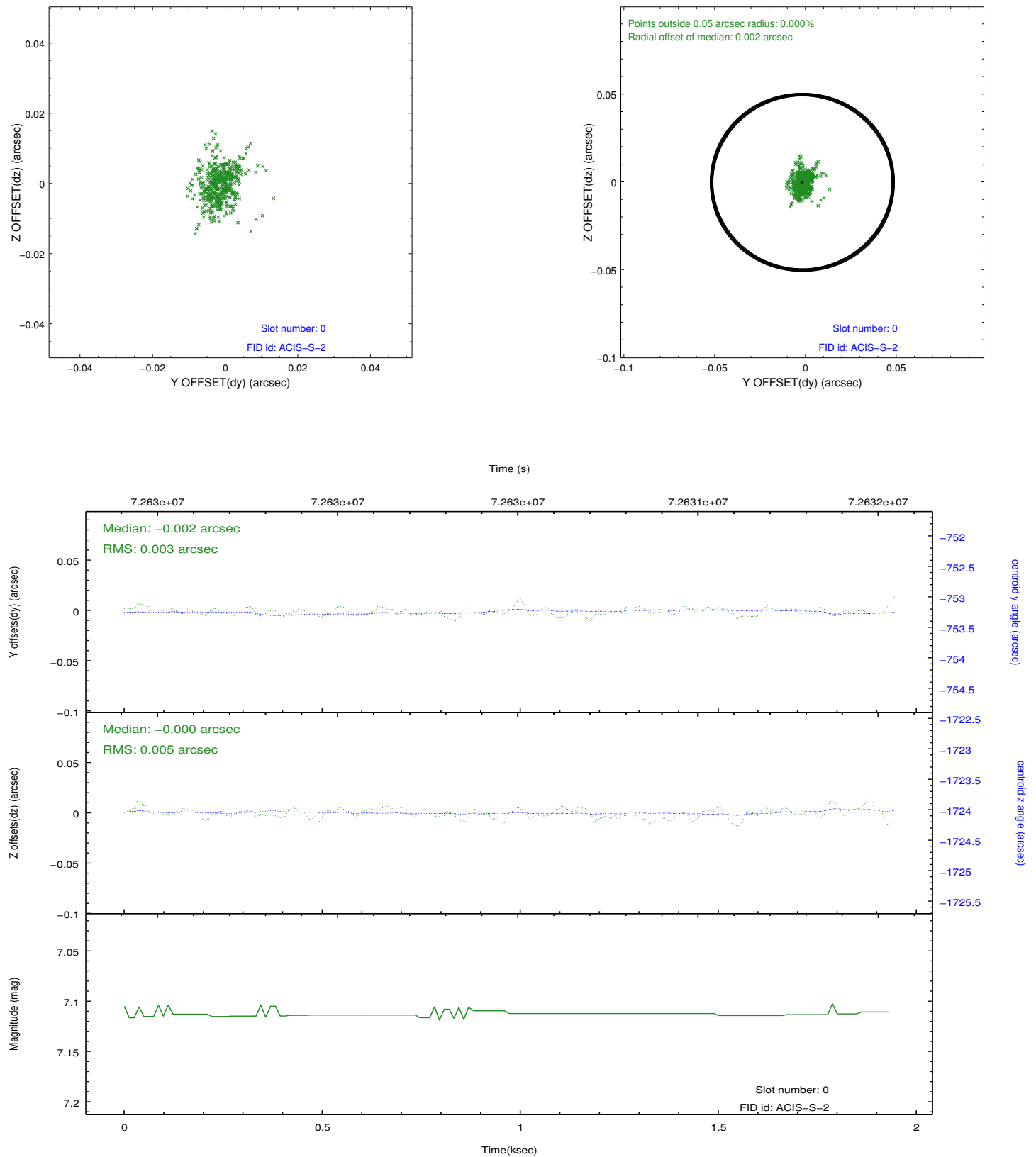


2.4.3 Slot 6

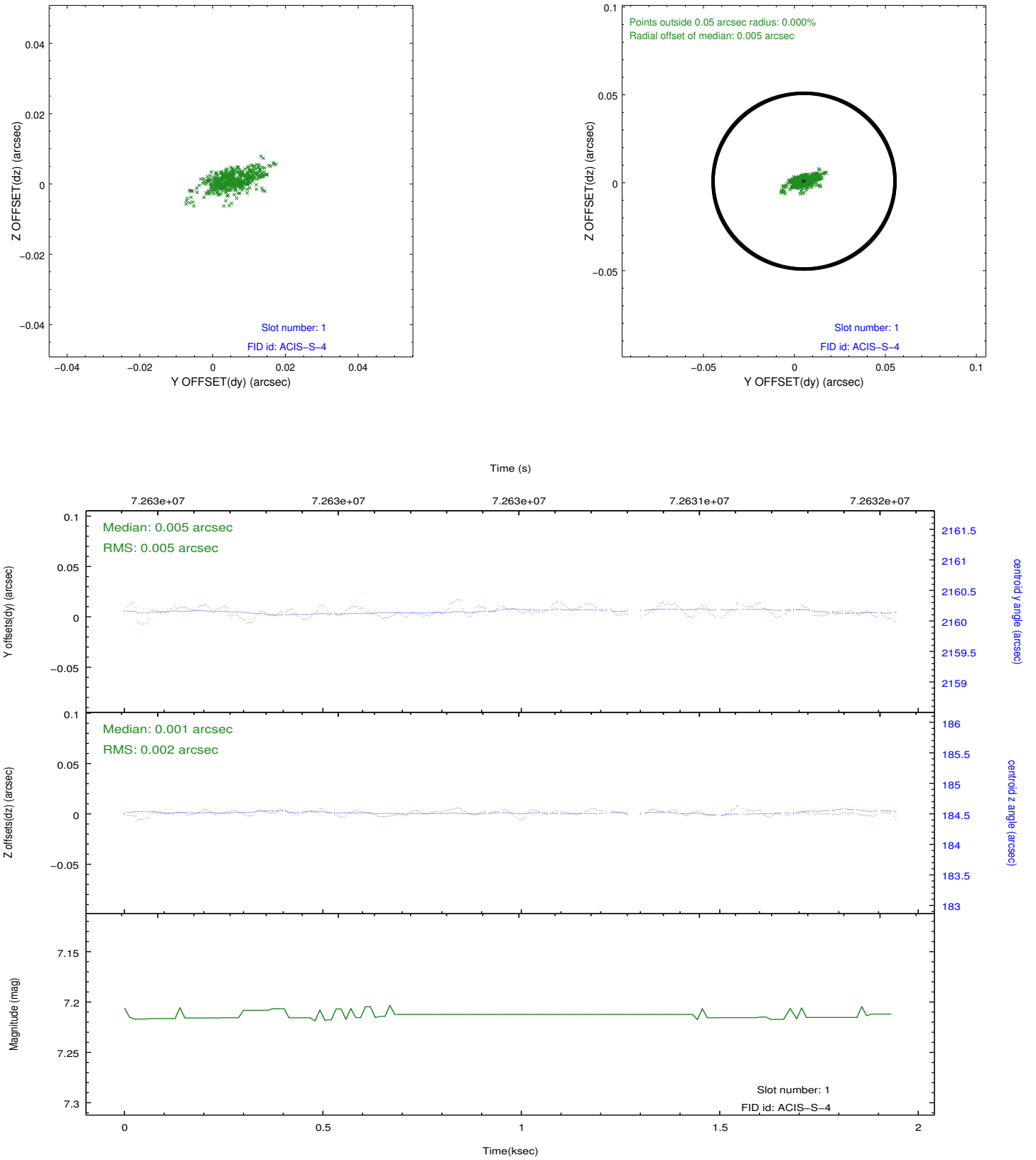


2.5 FID Slots

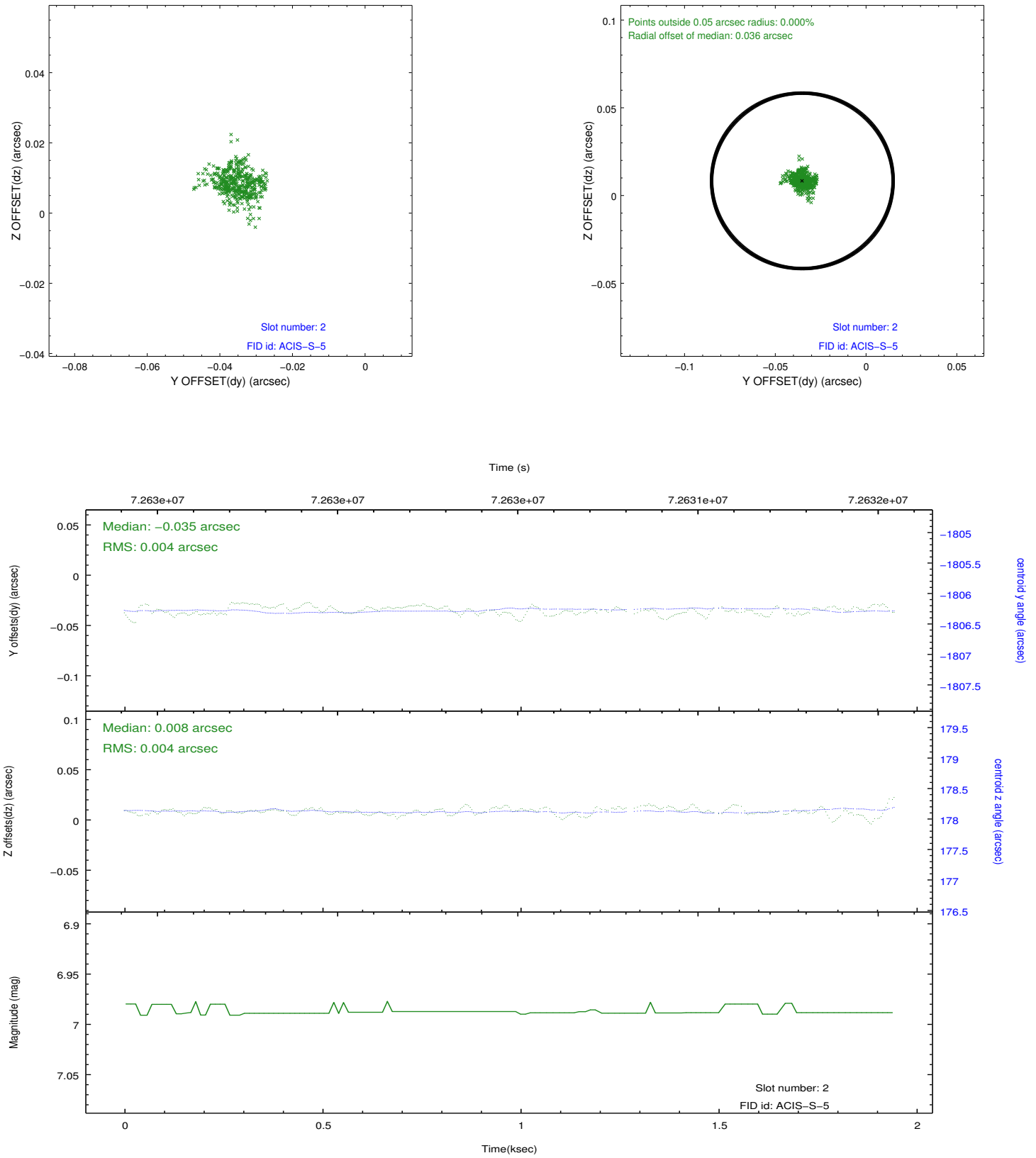
2.5.1 Slot 0



2.5.2 Slot 1



2.5.3 Slot 2



A Summary

A.1 Status

V&V Scientist	Joy Nichols
V&V Date (YYYY-MM-DD)	2013.01.17
V&V Edition	1
V&V Disposition and Status	OK
V&V Charge Time	1.427

A.2 Comments

Charge time for this ObsId remains at original value of 1.427000 ksec, although with the current processing the charge time would have been 1.532799 ksec. ====

Only 3 guide stars could be used in the aspect solution. The stars in slots 3 and 7 were not used due to poor data quality.