

# V&V Reference Report

## L2 ASCDS Version : 7.6.8.1

Observation 3958 - L2 Version 001  
Chandra X-Ray Center

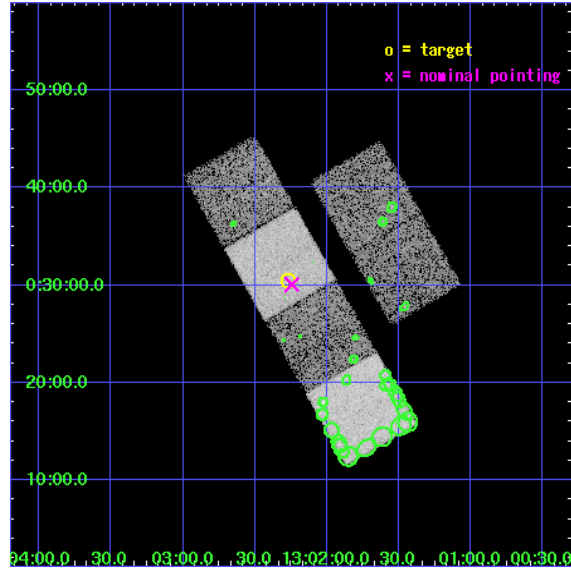
L2 Processing Date : Aug 11 2006

## Contents

<b>1</b>	<b>Front</b>	<b>2</b>
<b>2</b>	<b>OBI</b>	<b>3</b>
2.1	OBI . . . . .	3
2.1.1	Images . . . . .	3
2.1.2	Bias . . . . .	3
2.1.3	Parameters . . . . .	4
2.1.4	Events . . . . .	4
2.2	Compared Parameters . . . . .	5
2.3	Aspect . . . . .	6
2.4	Star Slots . . . . .	9
2.4.1	Slot 3 . . . . .	9
2.4.2	Slot 4 . . . . .	10
2.4.3	Slot 5 . . . . .	11
2.4.4	Slot 6 . . . . .	12
2.4.5	Slot 7 . . . . .	13
2.5	FID Slots . . . . .	14
2.5.1	Slot 0 . . . . .	14
2.5.2	Slot 1 . . . . .	15
2.5.3	Slot 2 . . . . .	16
<b>3</b>	<b>Point Sources</b>	<b>17</b>
<b>A</b>	<b>Summary</b>	<b>18</b>
A.1	Status . . . . .	18
A.2	Comments . . . . .	18

# 1 Front

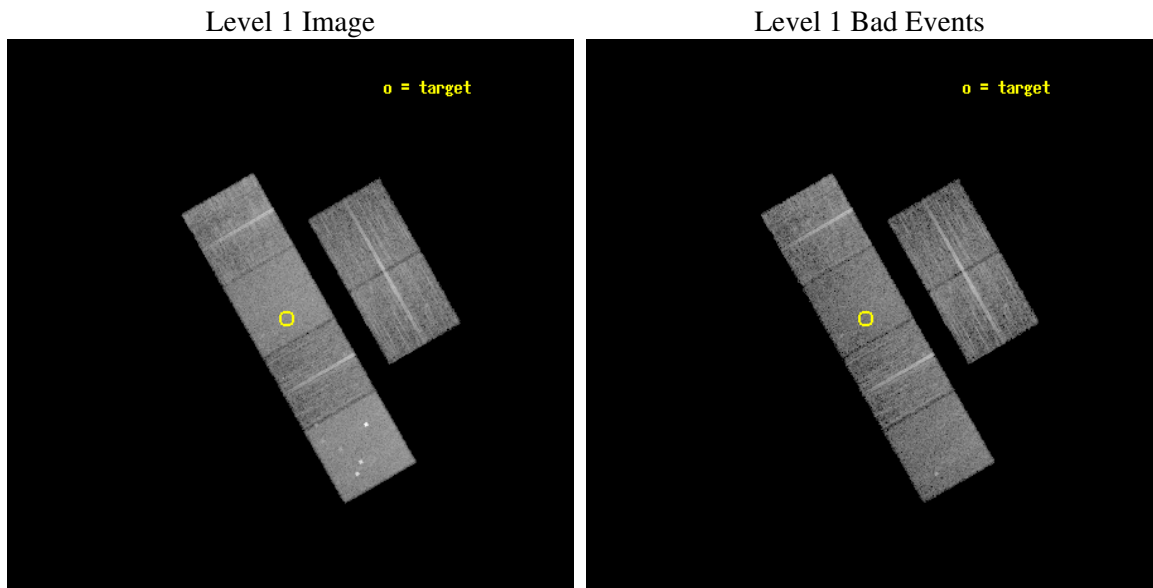
seq_num	700637
obs_id	3958
title	A CHANDRA AND XMM-NEWTON STUDY OF THE MOST DISTANT QUASARS: X-RAYING THE FIRST MASSIVE BLACK HOLES
observer	Prof. William Brandt
object	SDSS J130216+003032
dtcycle	0
cycle	P
ra_targ	195.567083
dec_targ	0.508917
ra_nom	195.56092727916
dec_nom	0.50147851078426
roll_nom	240.2352155142
revision	3
ontime	10950.399959207
livetime	10811.739401384
ontime2	10950.399959207
ontime3	10950.399959207
ontime5	10950.399959207
ontime6	10950.399959207
ontime7	10950.399959207
ontime8	10950.399959207
l2events	103858



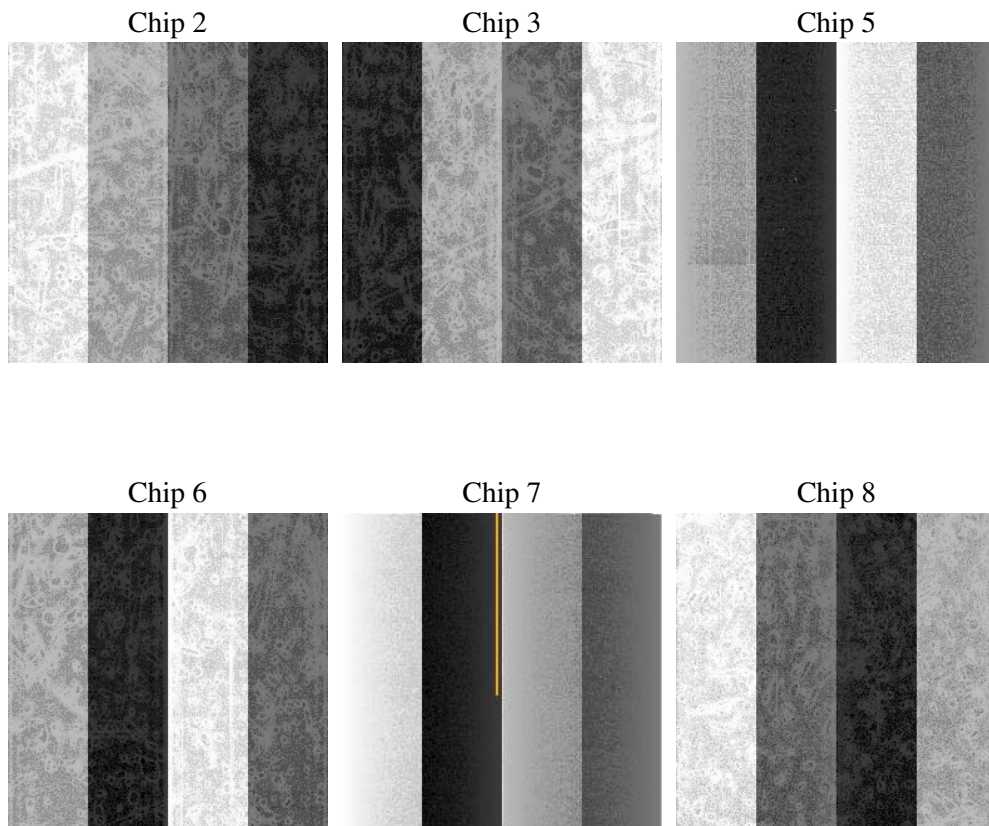
## 2 OBI

### 2.1 OBI

#### 2.1.1 Images



#### 2.1.2 Bias



### 2.1.3 Parameters

obi_num	1
ascdsver	7.6.8.1
caldbver	3.2.3
date	2006-08-12T01:56:17
revision	3

sched_exp_time	10800.000000
ontime	11450.478725135
ontime2	11450.478725135
ontime3	11450.478725135
ontime5	11450.478725135
ontime6	11450.478725135
ontime7	11450.478725135
ontime8	11450.478725135
l1events	507207

### 2.1.4 Events

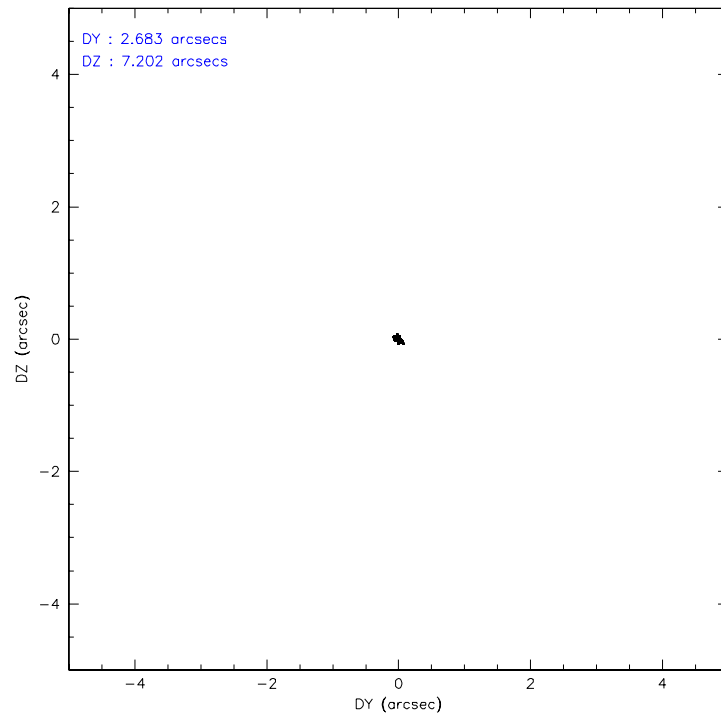
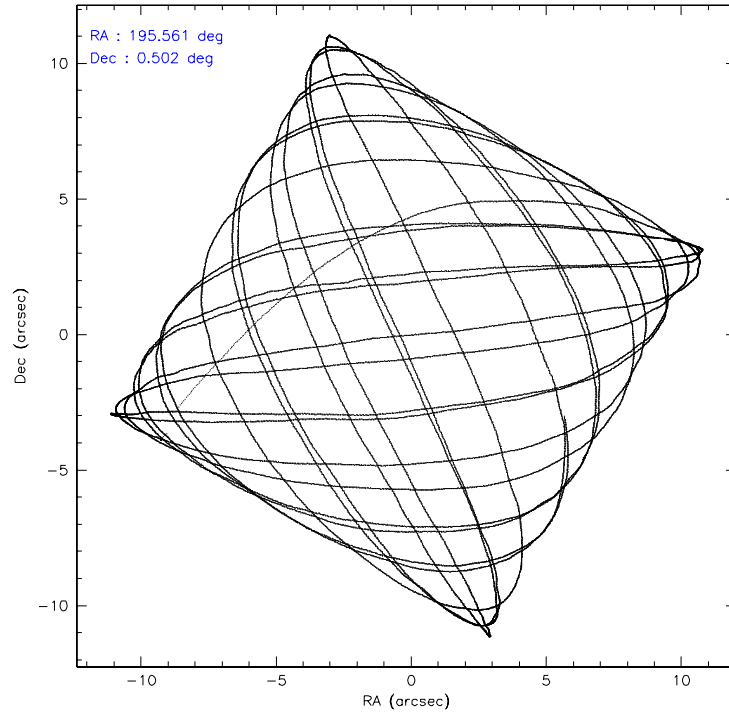
	ccd 2	ccd 3	ccd 5	ccd 6	ccd 7	ccd 8
level 1 events	74000	68946	108372	71881	94786	89222
rejected events	66099	61071	61219	63499	60625	71274
rejected %	89%	88%	56%	88%	63%	79%

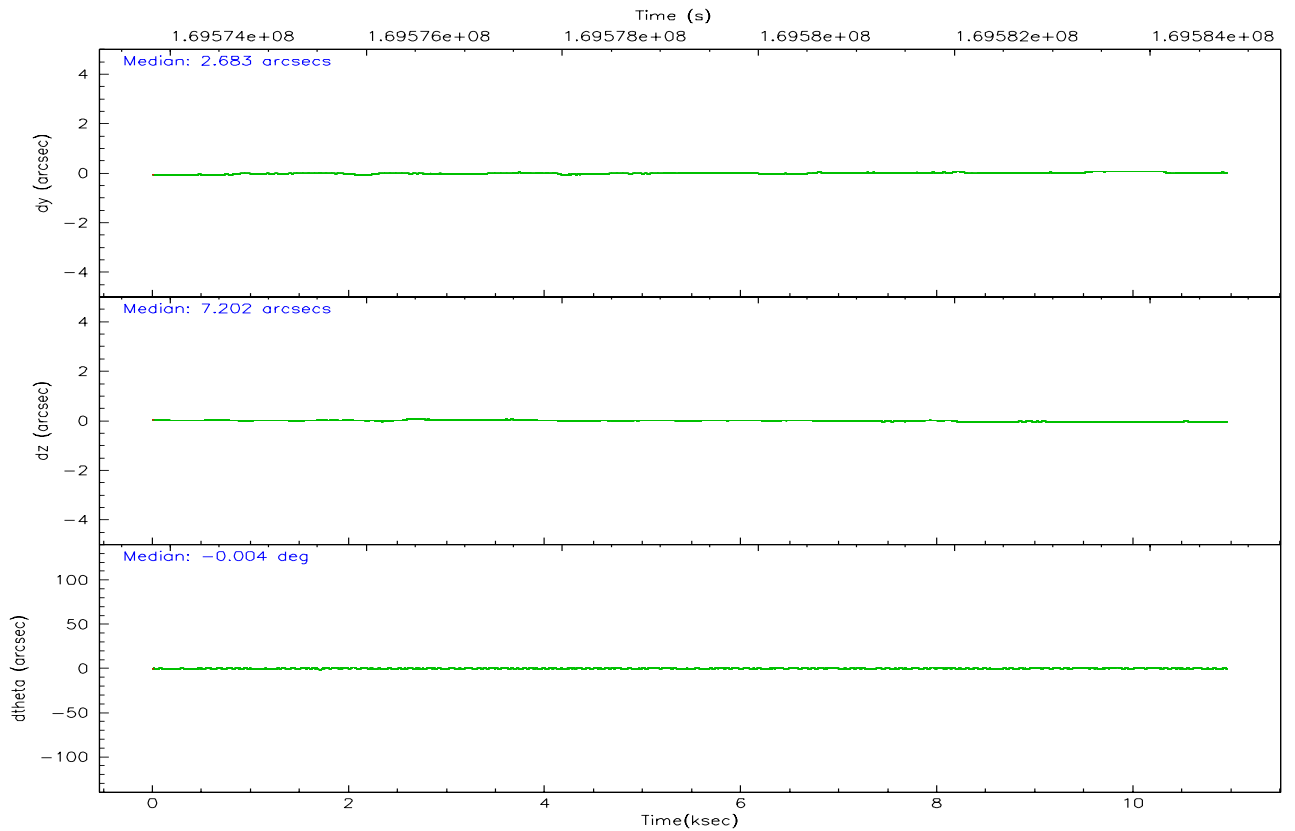
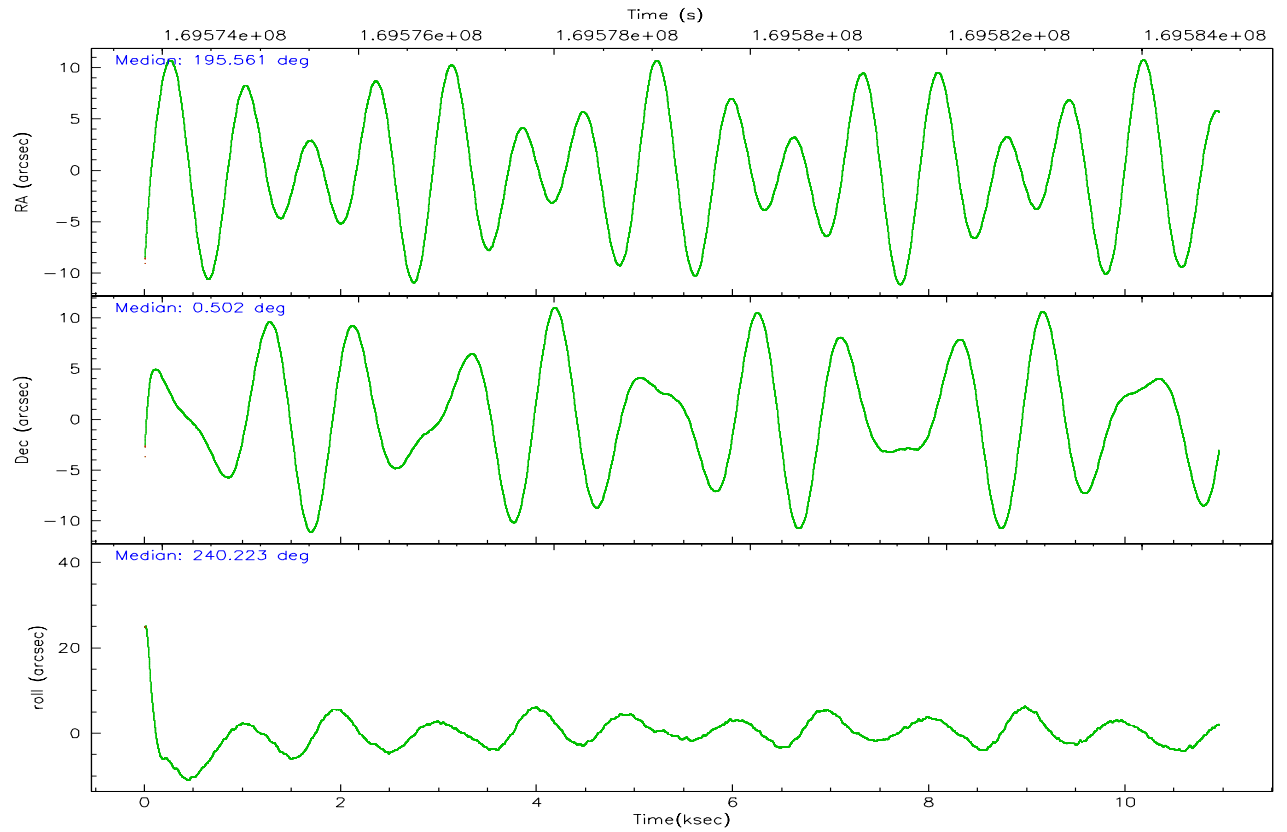
	ccd 2	ccd 3	ccd 5	ccd 6	ccd 7	ccd 8
grade 0 events	3675	3732	6439	3598	2139	5830
	4%	5%	5%	5%	2%	6%
grade 1 events	48	48	88	46	54	62
	0%	0%	0%	0%	0%	0%
grade 2 events	1658	1478	14618	1724	8700	4003
	2%	2%	13%	2%	9%	4%
grade 3 events	770	842	1098	917	1905	2110
	1%	1%	1%	1%	2%	2%
grade 4 events	797	813	975	849	1751	1888
	1%	1%	0%	1%	1%	2%
grade 5 events	2795	3084	5351	3367	6308	4132
	3%	4%	4%	4%	6%	4%
grade 6 events	1383	1392	26060	1744	21331	4967
	1%	2%	24%	2%	22%	5%
grade 7 events	62874	57557	53743	59636	52598	66230
	84%	83%	49%	82%	55%	74%

## 2.2 Compared Parameters

Parameter	Planned	Actual	Parameter	Planned	Actual
Instrument	ACIS	ACIS	Obspar format version number	6	6
Detector	ACIS-235678	ACIS-235678	Obspar file type	PREDICTED	ACTUAL
Grating	NONE	NONE	Obspar update status	NONE	UPDATED
Data mode	FAINT	FAINT	On-chip summing requested	N	N
Observation mode	POINTING	POINTING	Subarray requested	NONE	NONE
Pointing RA	195.560402	195.5609272791618	Alternating exposures requested	N	N
Pointing Dec	0.528720	0.5014785107842621	Primary exposure time	0.000000	3.2
Pointing Roll	240.078561	240.2352155141954			
SIM focus pos (mm)	-0.684267	-0.6828225247311905			
SIM defocus (mm)	0	0.001444936568705701			
SIM translation stage pos (mm)	-190.132523	-190.1400660498719			
SIM translation stage offset (mm)	0	0.00754346686406393			
Observation start time	169573988.184000	169572683.76419			
Observation start date	2003-05-17T15:52:04	2003-05-17T15:31:23			
Observation end time	169584788.184000	169585157.50222			
Observation end date	2003-05-17T18:52:04	2003-05-17T18:59:17			
Read mode	TIMED	TIMED			

## 2.3 Aspect





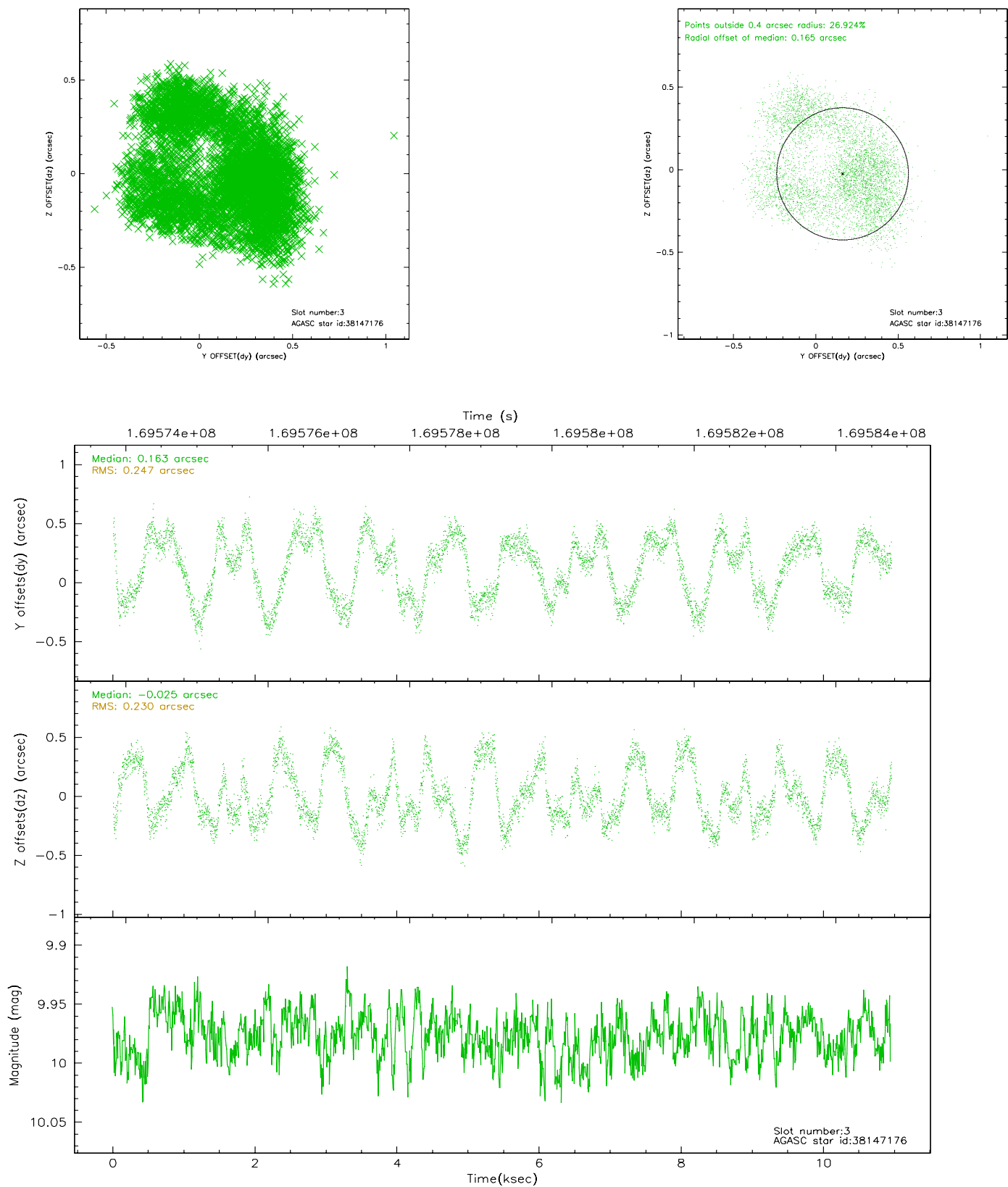
# Slot Statistics

slot	status	id	mag	n_pts	med_dy	med_dz	dr1	dr2	ra	dec	mean_y	mean_z
0	FID	ACIS-S-2	7.11	2672	-0.018	0.010	0.007	0.012	0.000000	0.000000	-755.32	-1728.36
1	FID	ACIS-S-4	7.20	2673	-0.026	0.006	0.005	0.010	0.000000	0.000000	2157.73	179.64
2	FID	ACIS-S-5	7.24	2673	0.013	-0.007	0.007	0.012	0.000000	0.000000	-1807.54	173.82
3	GUIDE	38147176	9.98	5341	0.163	-0.025	0.377	0.543	194.928487	0.307485	1825.67	-1574.21
4	GUIDE	39062304	9.08	5345	0.040	0.038	0.111	0.170	195.688569	0.285475	529.58	836.20
5	GUIDE	39063488	9.51	5344	-0.130	0.121	0.111	0.176	195.608113	0.950549	-1401.38	-608.77
6	GUIDE	39064944	8.03	5346	-0.002	-0.111	0.108	0.156	195.513486	0.405733	467.94	74.27
7	GUIDE	39064152	7.00	5345	-0.047	-0.043	0.108	0.157	196.185427	0.295130	-393.34	2369.31

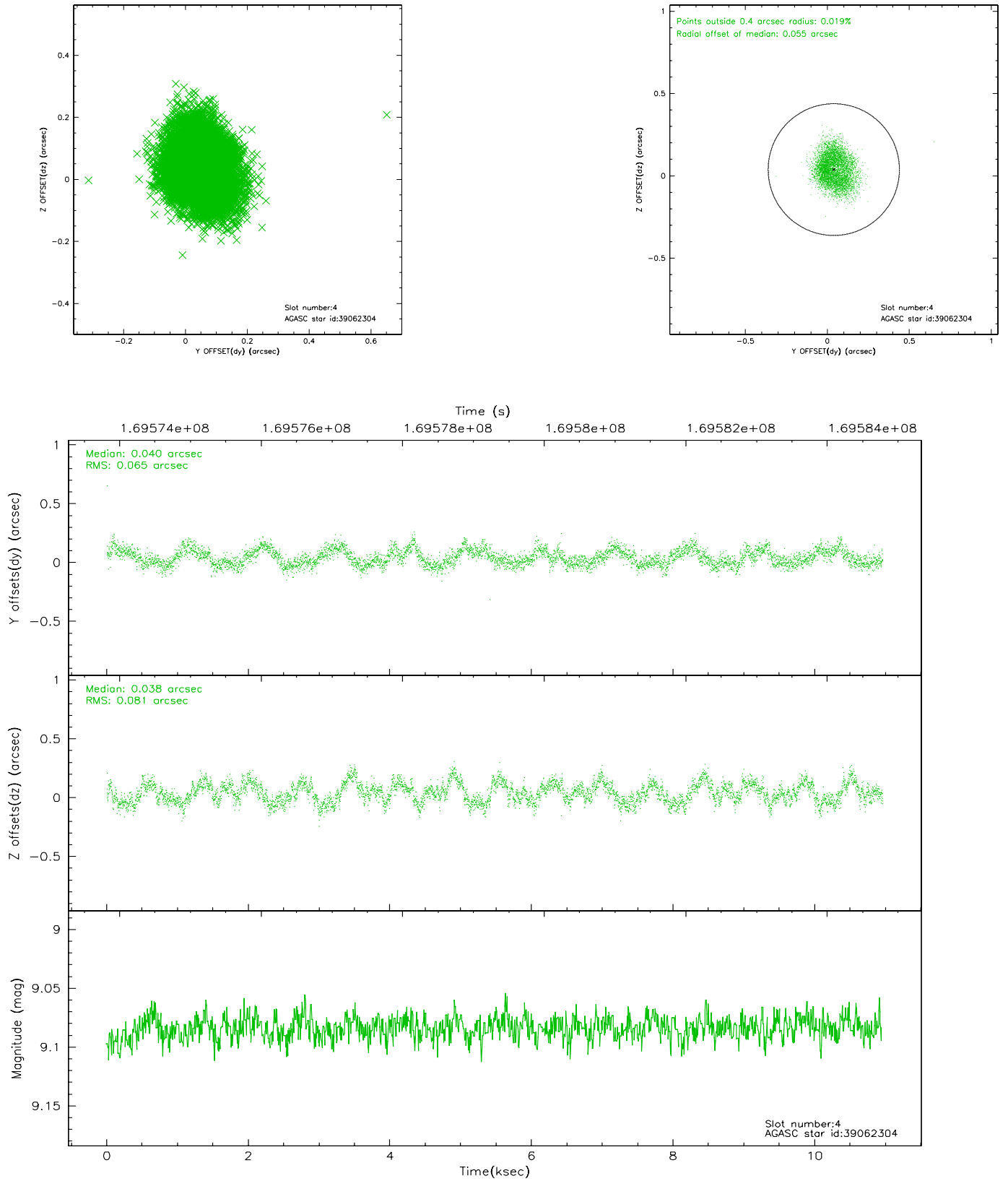


## 2.4 Star Slots

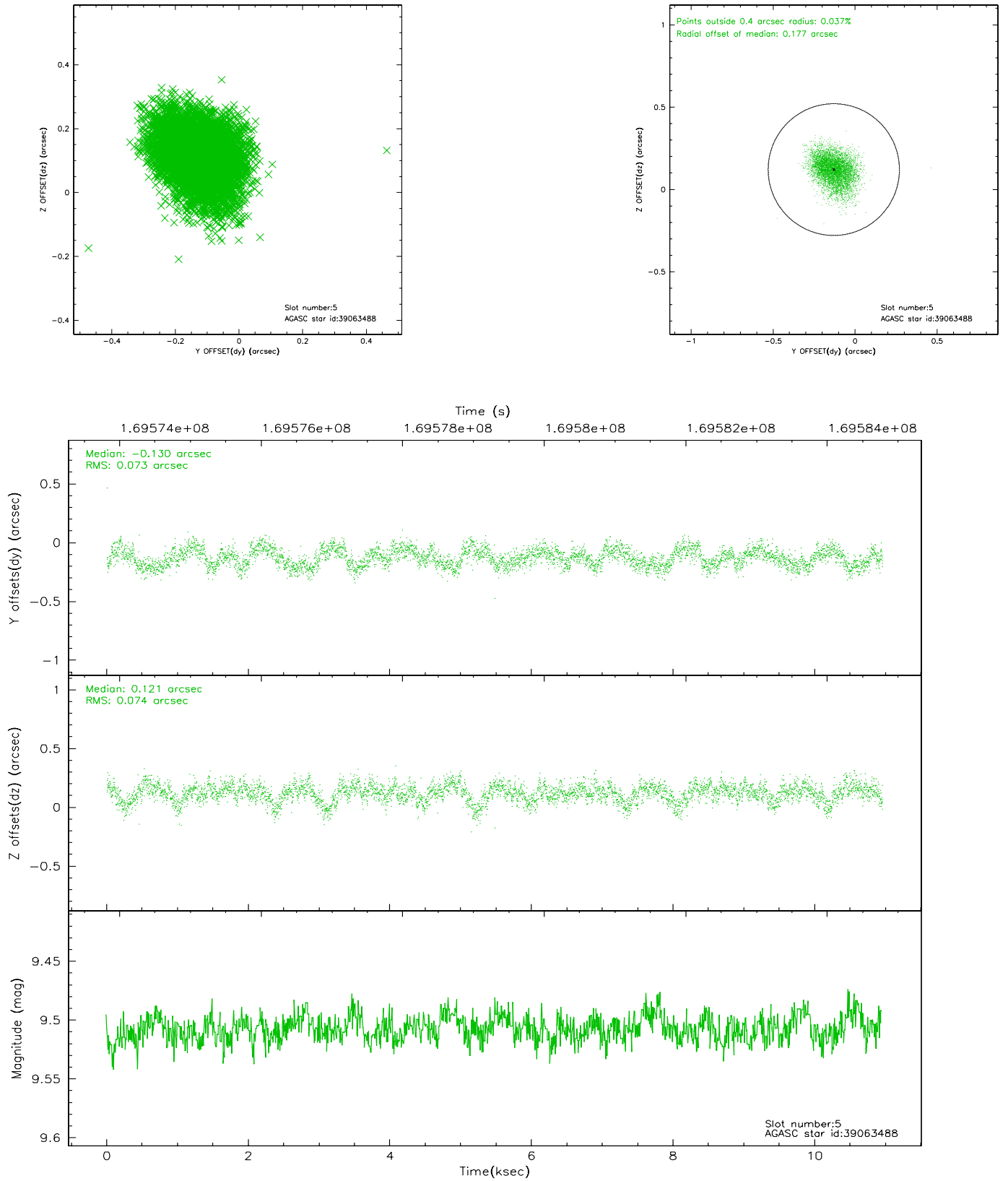
### 2.4.1 Slot 3



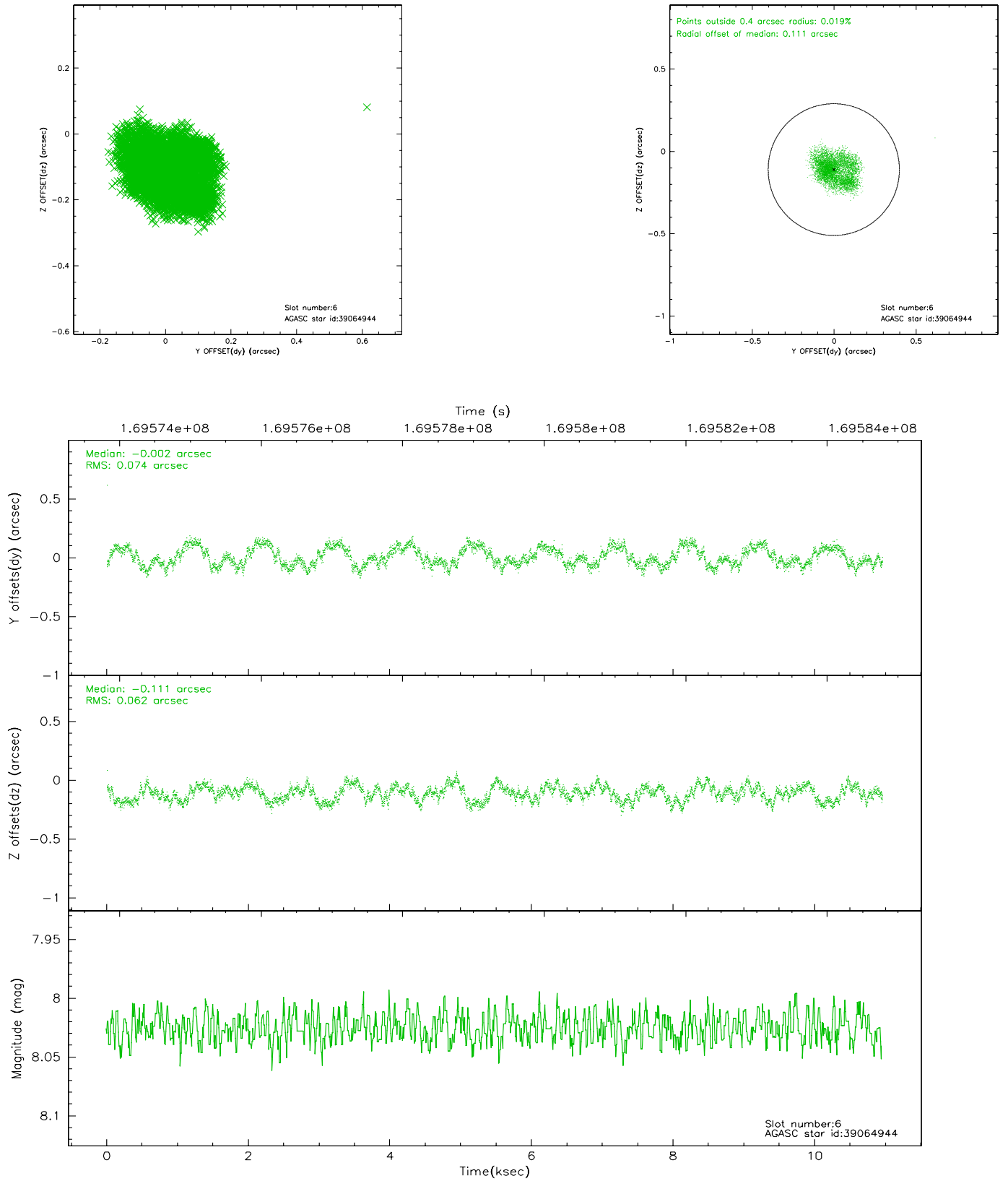
## 2.4.2 Slot 4



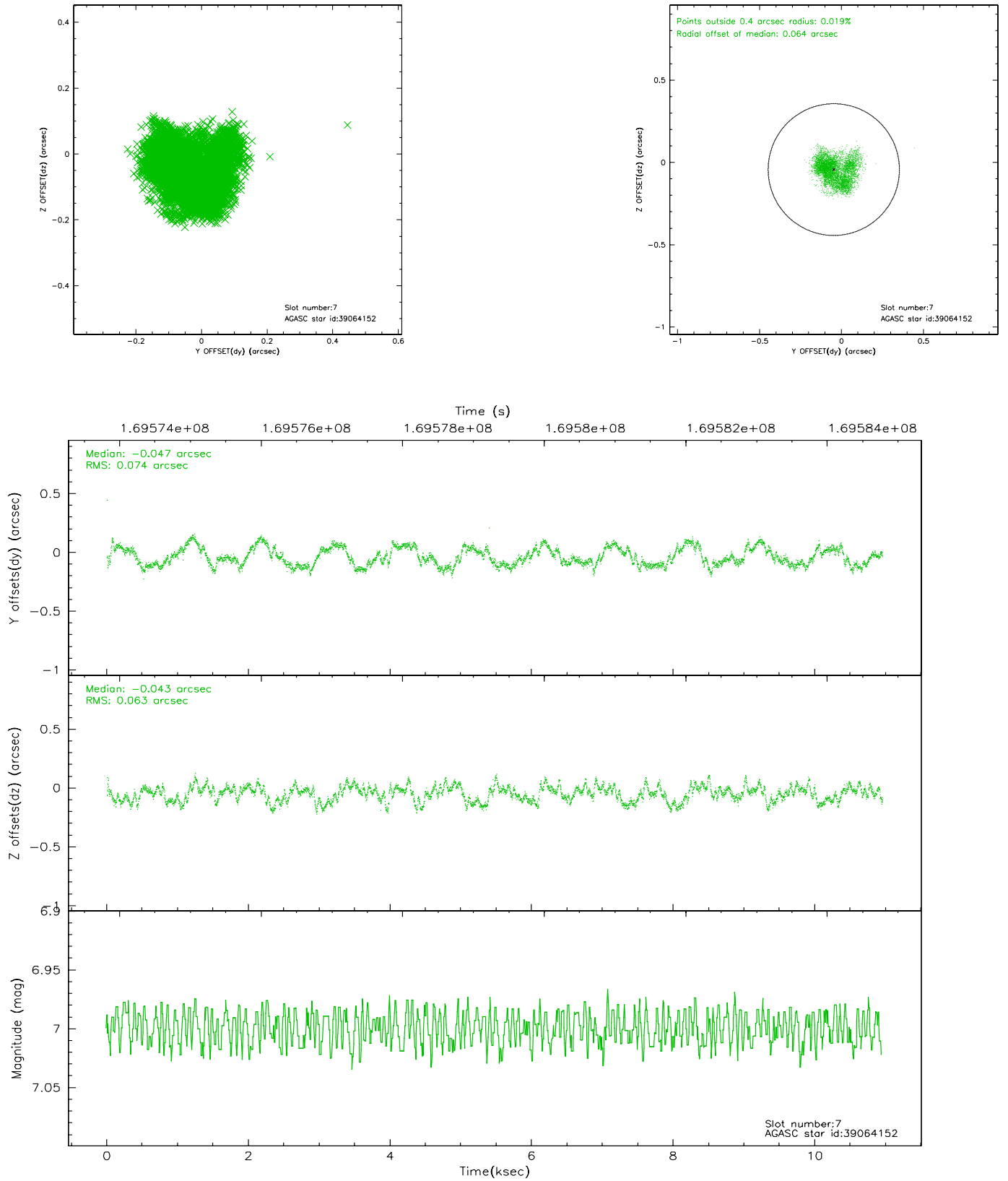
### 2.4.3 Slot 5



## 2.4.4 Slot 6

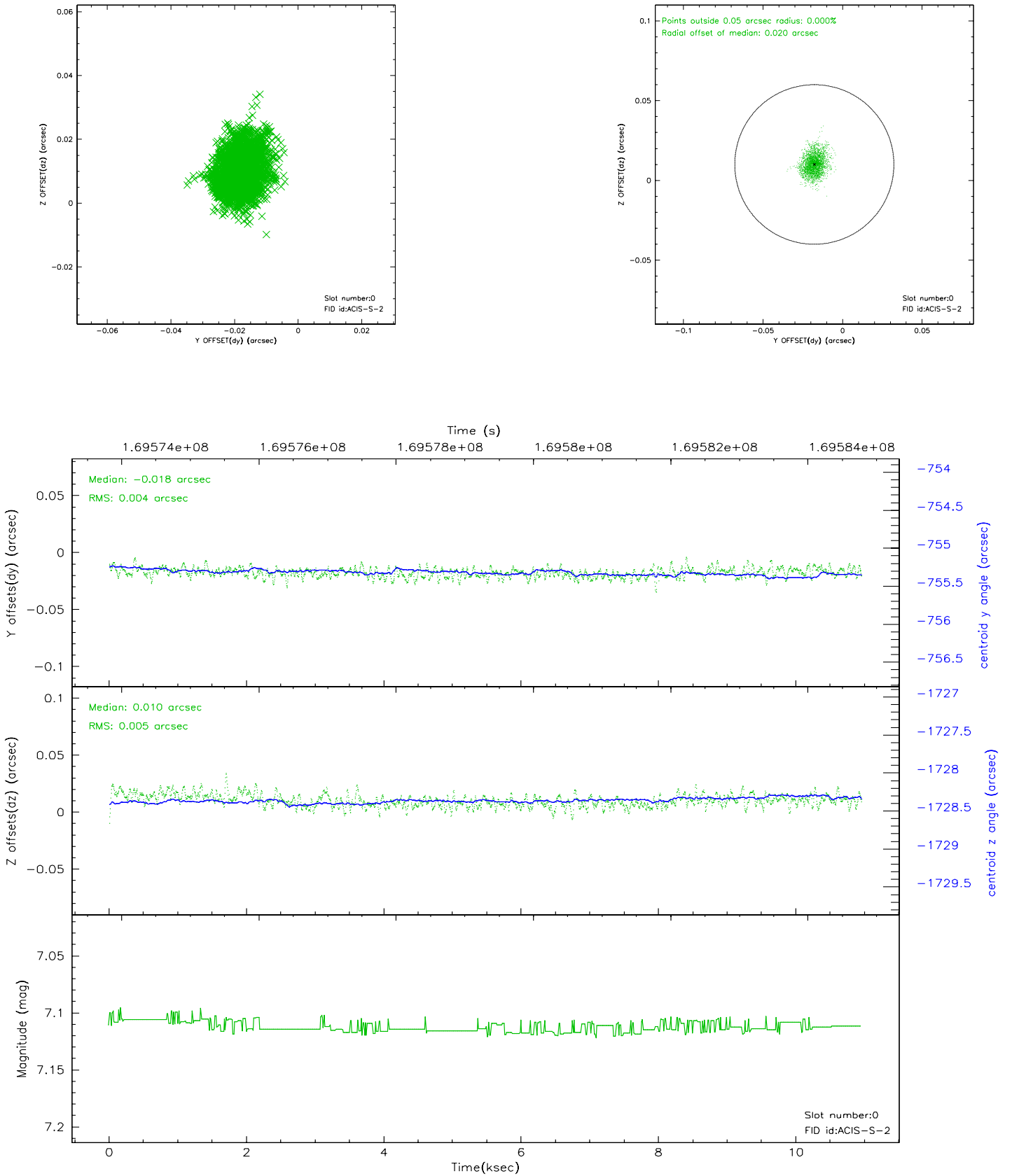


## 2.4.5 Slot 7

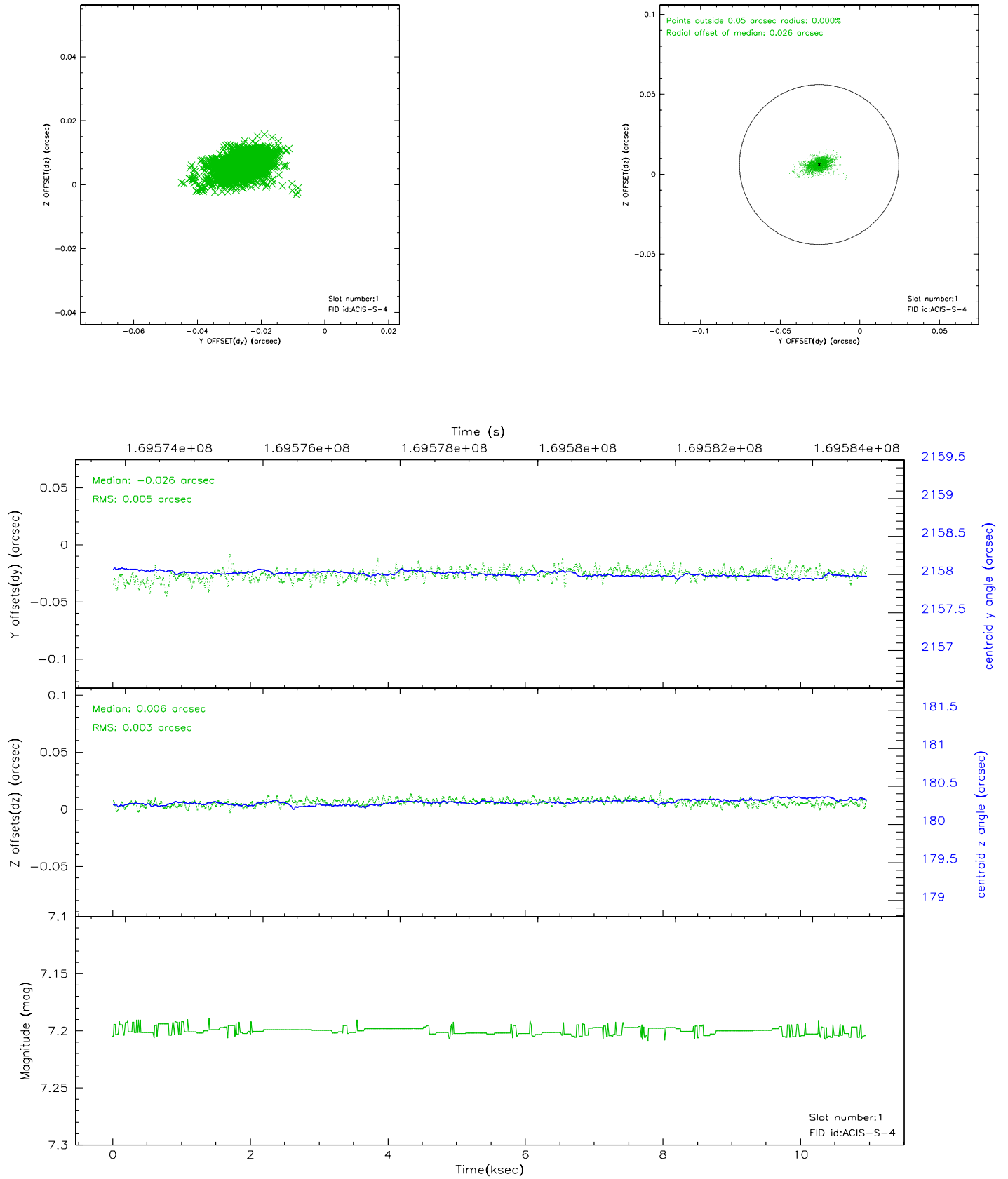


## 2.5 FID Slots

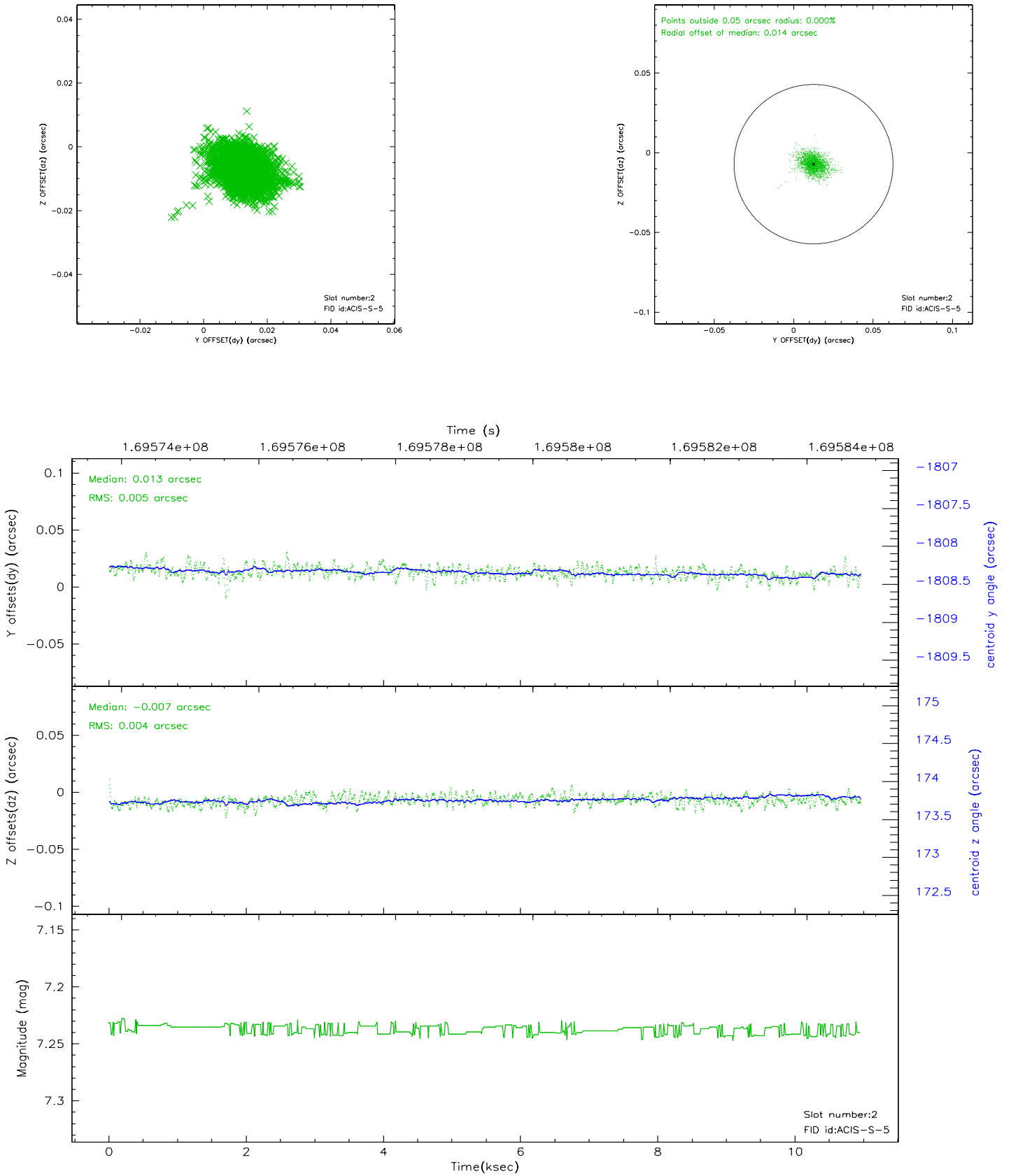
### 2.5.1 Slot 0



## 2.5.2 Slot 1

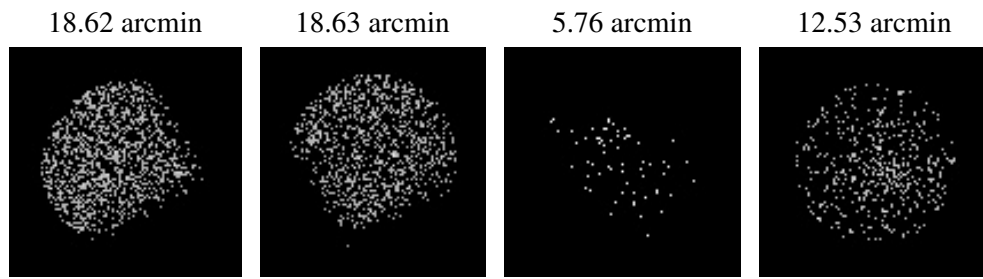


### 2.5.3 Slot 2





### 3 Point Sources



## A Summary

### A.1 Status

V&V Scientist	Jen Lauer
V&V Date (YYYY-MM-DD)	2006.08.13
V&V Edition	1
V&V Disposition and Status	OK
V&V Charge Time	10.95

### A.2 Comments