

V&V Reference Report

L2 ASCDS Version : 7.6.8

Observation 3848 - L2 Version 001
Chandra X-Ray Center

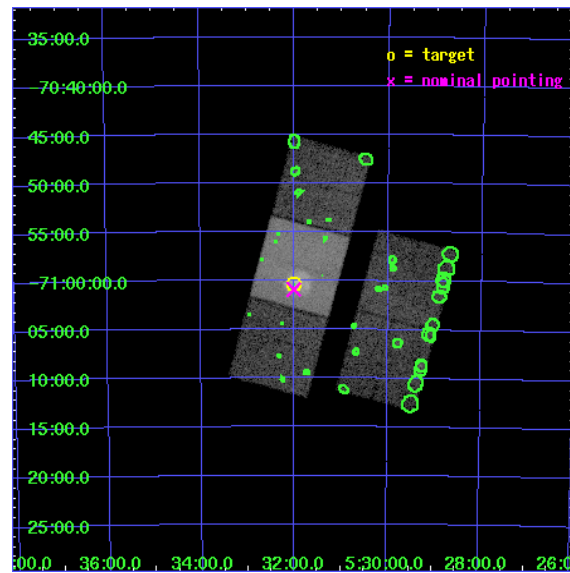
L2 Processing Date : Jul 22 2006

Contents

1	Front	2
2	OBI	3
2.1	OBI	3
2.1.1	Images	3
2.1.2	Bias	3
2.1.3	Parameters	4
2.1.4	Events	4
2.2	Compared Parameters	5
2.3	Aspect	6
2.4	Star Slots	9
2.4.1	Slot 3	9
2.4.2	Slot 4	10
2.4.3	Slot 5	11
2.4.4	Slot 6	12
2.4.5	Slot 7	13
2.5	FID Slots	14
2.5.1	Slot 0	14
2.5.2	Slot 1	15
2.5.3	Slot 2	16
3	Point Sources	17
A	Summary	18
A.1	Status	18
A.2	Comments	18

1 Front

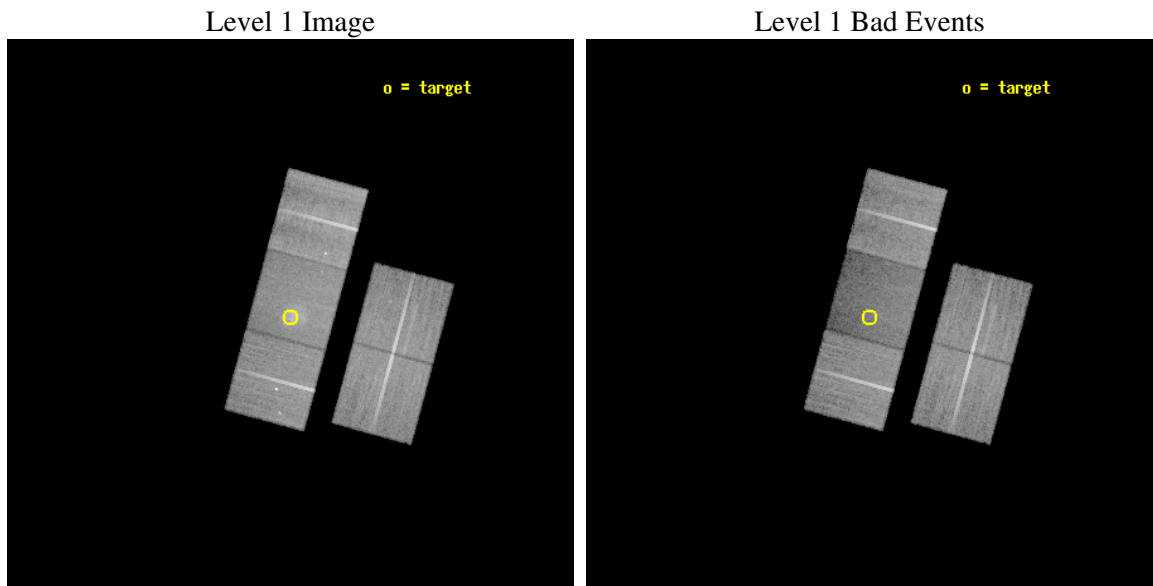
seq_num	500327
obs_id	3848
title	SUPERNOVA REMNANTS IN THE MAGELLANIC CLOUDS
observer	Frederick Seward
object	0532-710 [N206]
dtcycle	0
cycle	P
ra_targ	83.0
dec_targ	-71.005556
ra_nom	83.002623266777
dec_nom	-71.01517509063
roll_nom	285.15910899362
revision	2
ontime	33551.29993549
livetime	33112.927501725
ontime2	33551.29993549
ontime3	33545.017995059
ontime6	33551.29993549
ontime7	33551.29993549
ontime8	33545.017955214
l2events	144039



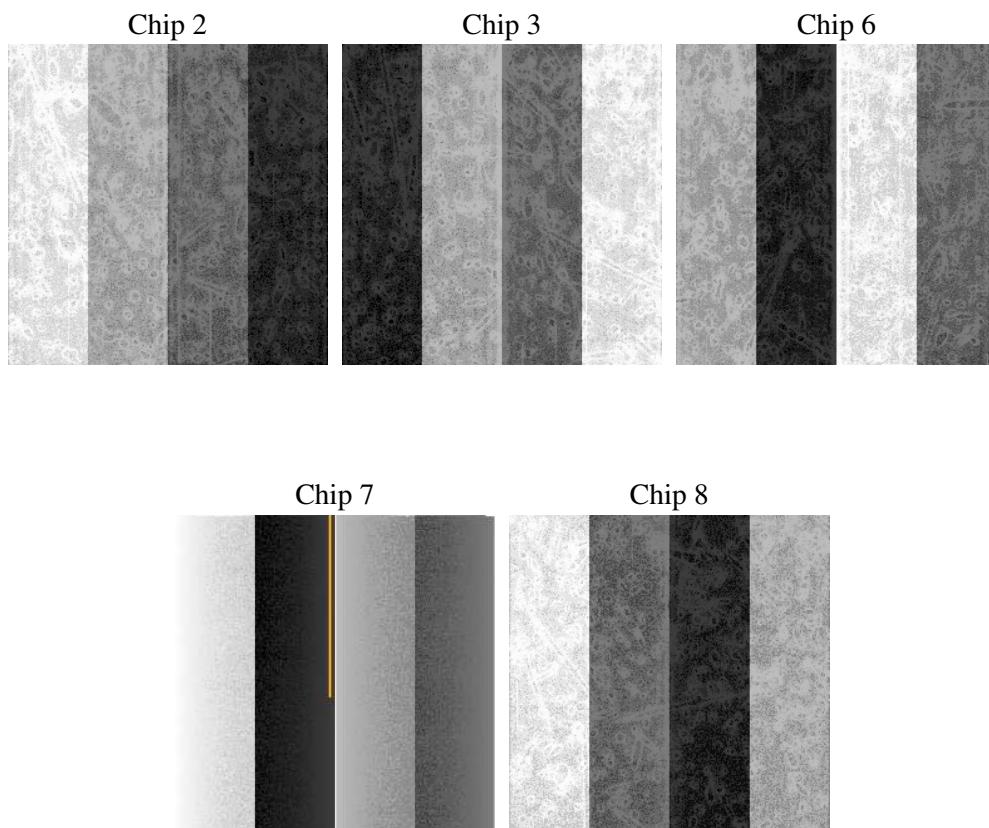
2 OBI

2.1 OBI

2.1.1 Images



2.1.2 Bias



2.1.3 Parameters

obi_num	0
ascdsver	7.6.8
caldbver	3.2.2
date	2006-07-22T10:45:11
revision	2

sched_exp_time	33452.000000
ontime	33558.460230857
ontime2	33558.460210919
ontime3	33552.178270489
ontime6	33558.460210919
ontime7	33558.460230857
ontime8	33552.178230643
llevents	889666

2.1.4 Events

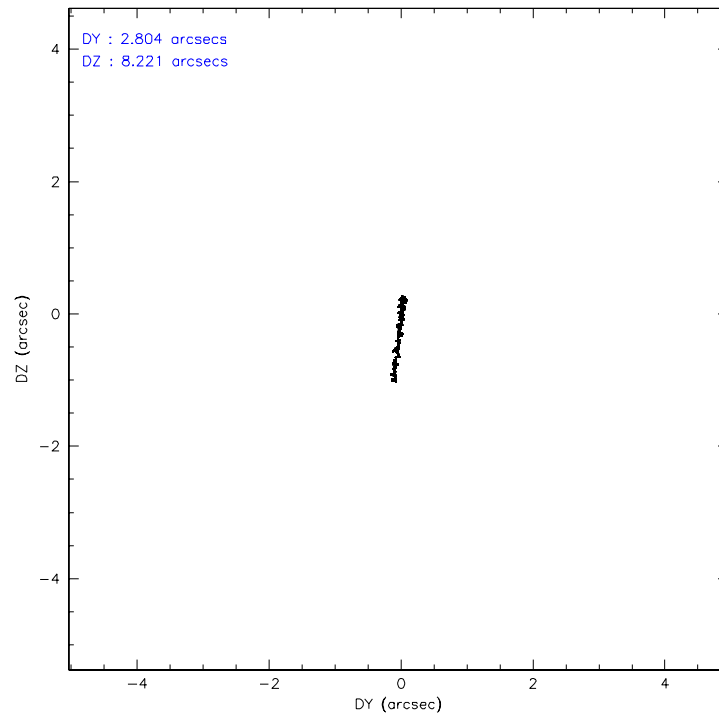
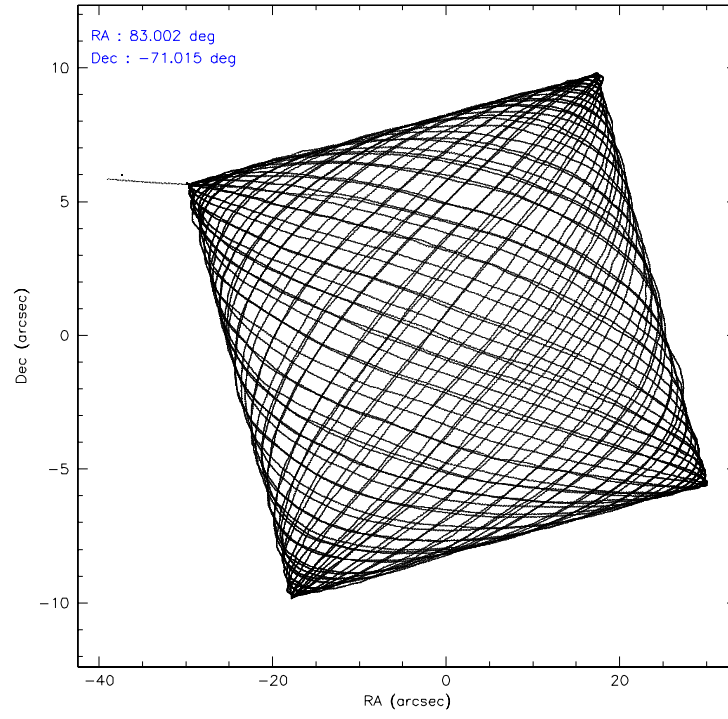
	ccd 2	ccd 3	ccd 6	ccd 7	ccd 8
level 1 events	174336	167662	172997	168029	206642
rejected events	157946	150758	152908	85130	160108
rejected %	90%	89%	88%	50%	77%

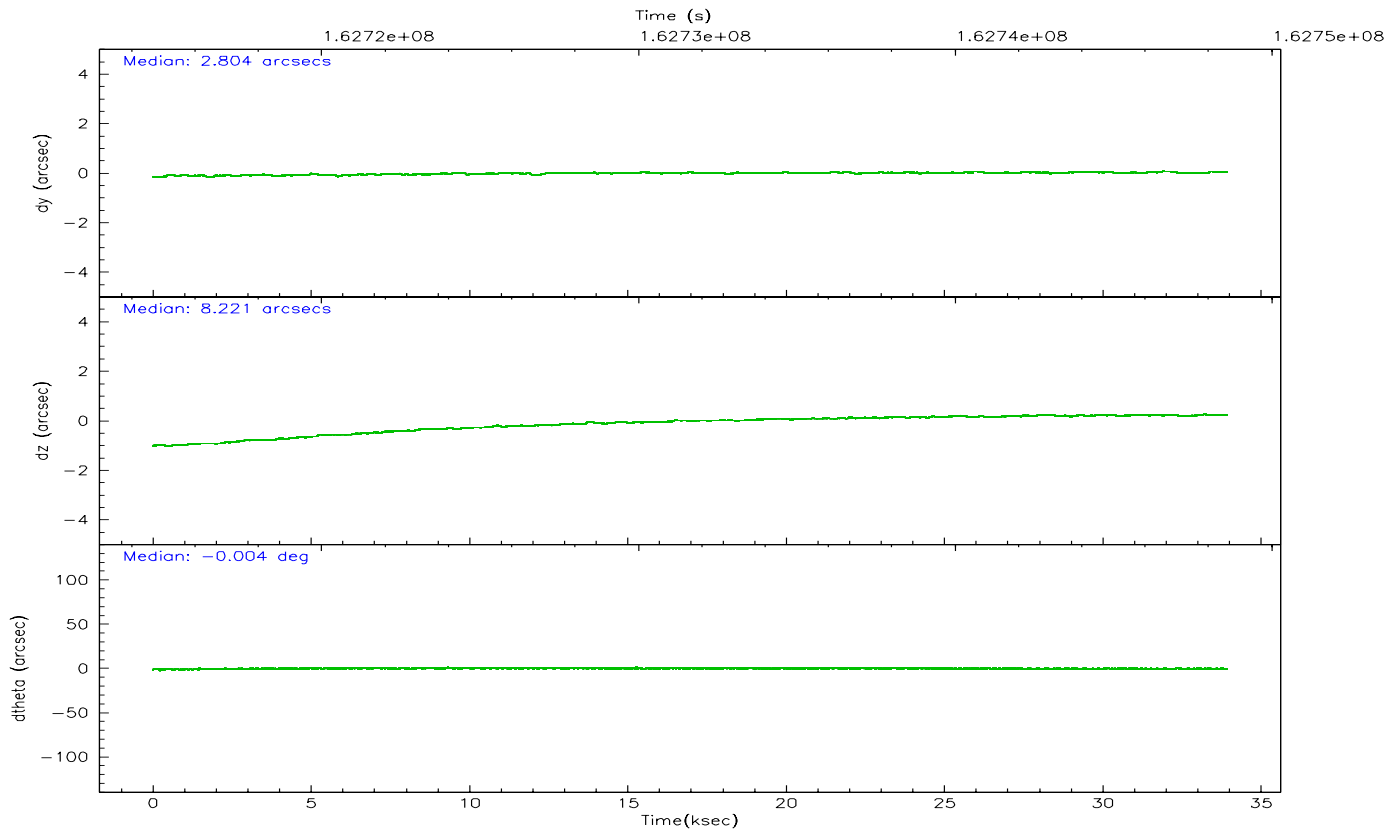
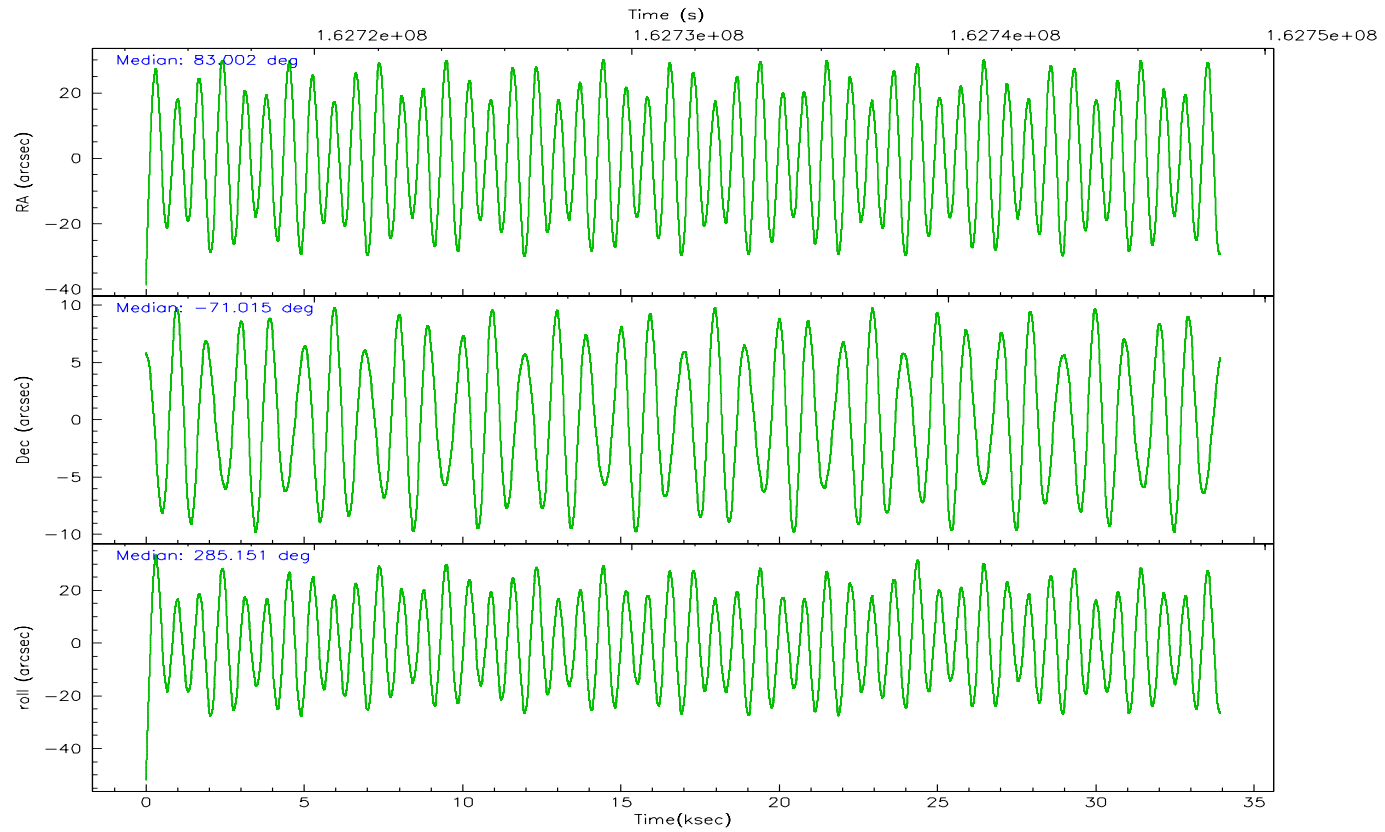
	ccd 2	ccd 3	ccd 6	ccd 7	ccd 8
grade 0 events	6541	7181	8643	8987	13748
	3%	4%	4%	5%	6%
grade 1 events	80	91	75	91	154
	0%	0%	0%	0%	0%
grade 2 events	3662	3307	3943	21415	10693
	2%	1%	2%	12%	5%
grade 3 events	1805	1762	2027	5844	5061
	1%	1%	1%	3%	2%
grade 4 events	1777	1754	1967	5698	4760
	1%	1%	1%	3%	2%
grade 5 events	4539	5595	5526	12169	8257
	2%	3%	3%	7%	3%
grade 6 events	2609	2906	3514	40977	12275
	1%	1%	2%	24%	5%
grade 7 events	153323	145066	147302	72848	151694
	87%	86%	85%	43%	73%

2.2 Compared Parameters

Parameter	Planned	Actual	Parameter	Planned	Actual
Instrument	ACIS	ACIS	Obspar format version number	6	6
Detector	ACIS-23678	ACIS-23678	Obspar file type	PREDICTED	ACTUAL
Grating	NONE	NONE	Obspar update status	NONE	UPDATED
Data mode	VFAINT	VFAINT	On-chip summing requested	N	N
Observation mode	POINTING	POINTING	Subarray requested	NONE	NONE
Pointing RA	82.942536	83.00262326677748	Alternating exposures requested	N	N
Pointing Dec	-70.996252	-71.01517509063011	Primary exposure time	0.000000	3.1
Pointing Roll	284.945661	285.1591089936229			
SIM focus pos (mm)	-0.684267	-0.6828225247311905			
SIM defocus (mm)	0	0.001444936568705701			
SIM translation stage pos (mm)	-190.132523	-190.1400660498719			
SIM translation stage offset (mm)	0	0.00754346686406393			
Observation start time	162715146.184000	162714039.47473			
Observation start date	2003-02-27T06:38:02	2003-02-27T06:20:39			
Observation end time	162748598.184000	162749393.26372			
Observation end date	2003-02-27T15:55:34	2003-02-27T16:09:53			
Read mode	TIMED	TIMED			

2.3 Aspect



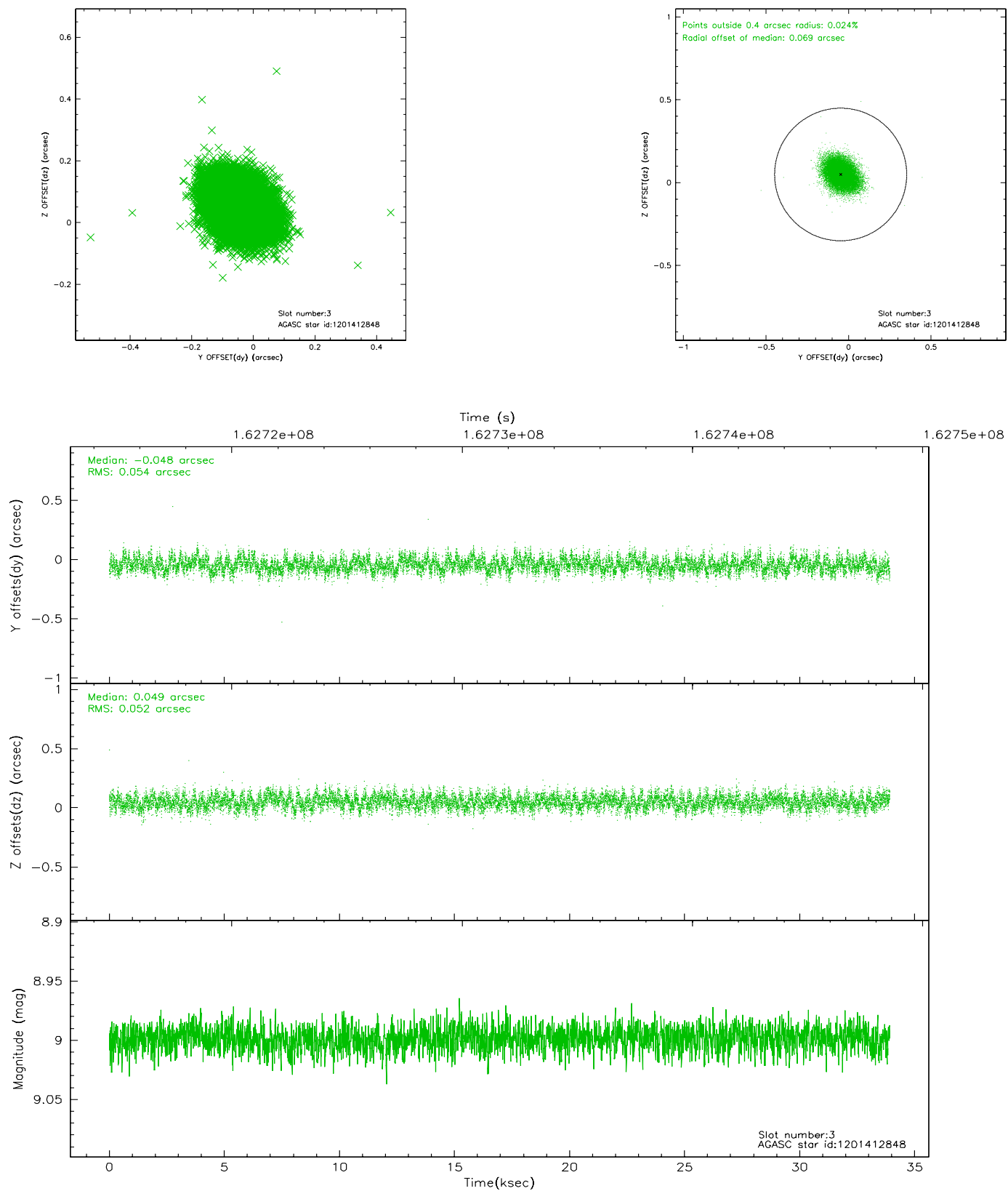


Slot Statistics

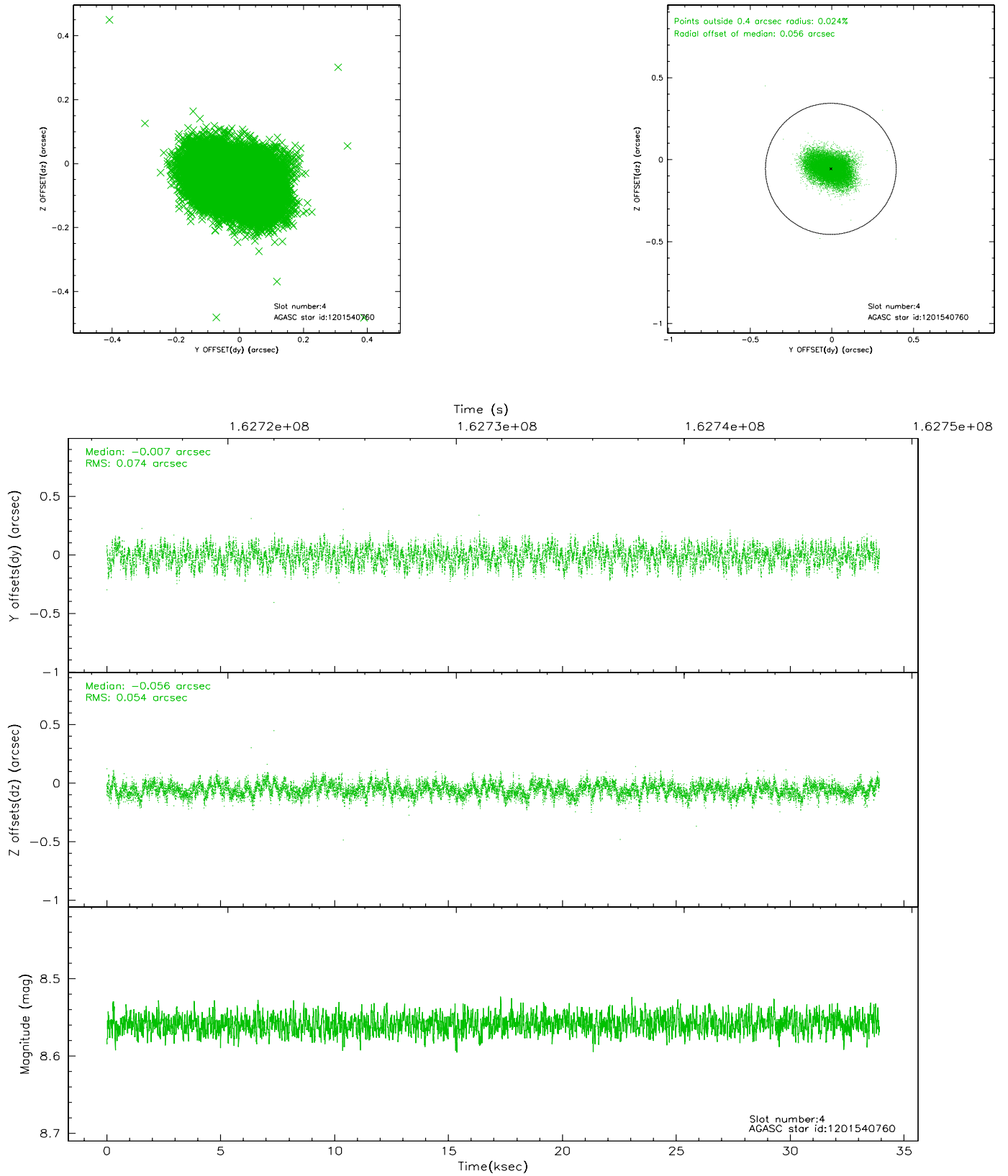
slot	status	id	mag	n_pts	med_dy	med_dz	dr1	dr2	ra	dec	mean_y	mean_z
0	FID	ACIS-S-2	7.11	8274	-0.007	0.010	0.008	0.014	0.000000	0.000000	-755.44	-1729.26
1	FID	ACIS-S-4	7.20	8273	-0.045	0.001	0.006	0.010	0.000000	0.000000	2157.78	179.16
2	FID	ACIS-S-5	7.24	8274	0.021	-0.002	0.007	0.014	0.000000	0.000000	-1808.19	172.89
3	GUIDE	1201412848	9.00	16540	-0.048	0.049	0.080	0.129	81.875057	-71.216960	459.58	-1402.76
4	GUIDE	1201540760	8.56	16547	-0.007	-0.056	0.097	0.157	84.403691	-70.419249	-1531.87	2233.45
5	GUIDE	1201409616	9.59	16536	0.021	0.030	0.115	0.188	81.670021	-70.738546	-1270.33	-1224.48
6	GUIDE	1201542232	9.68	16525	0.042	-0.027	0.136	0.216	84.533398	-70.465667	-1327.50	2336.29
7	GUIDE	1202072504	9.10	16539	0.003	-0.001	0.094	0.155	84.613647	-71.282090	1517.81	1593.58

2.4 Star Slots

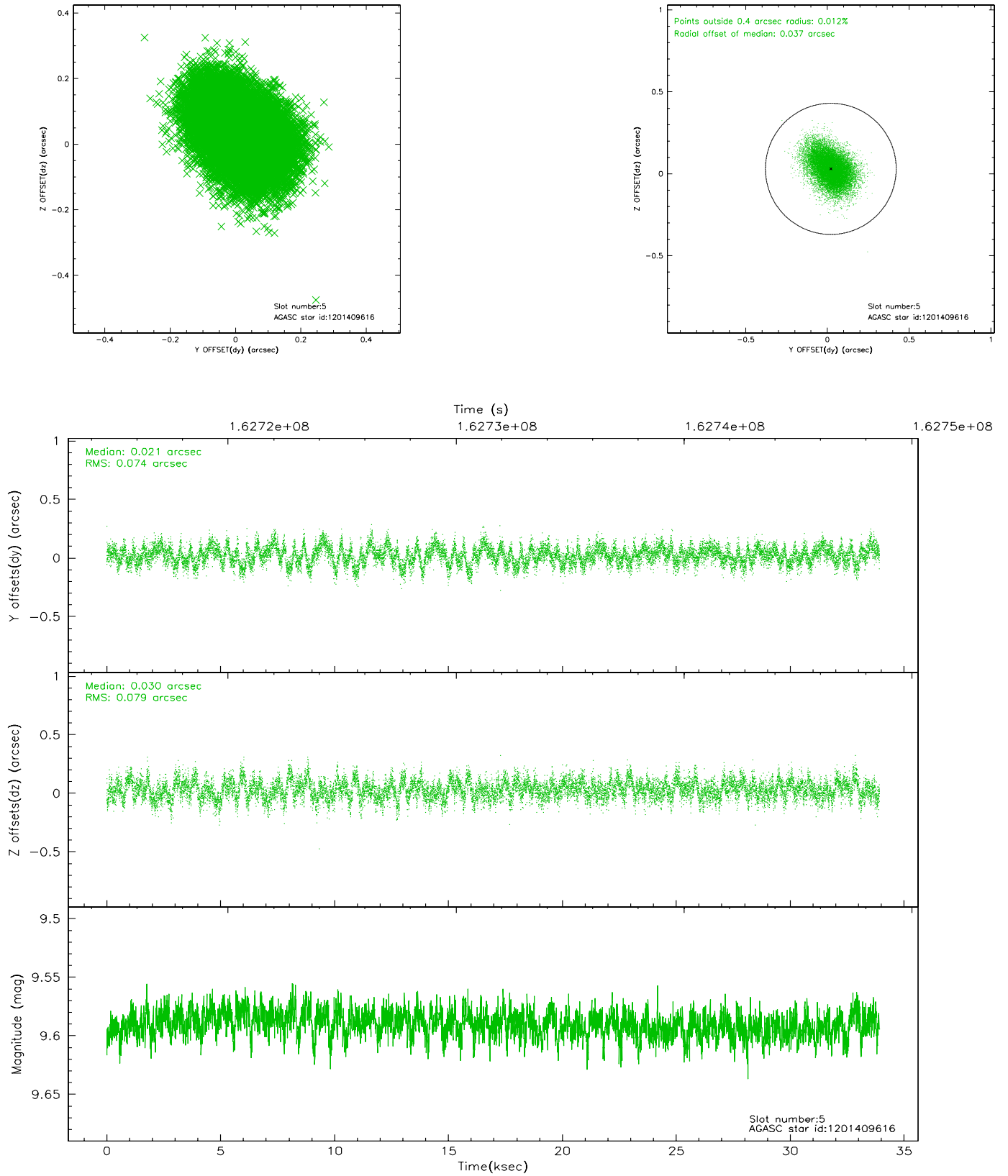
2.4.1 Slot 3



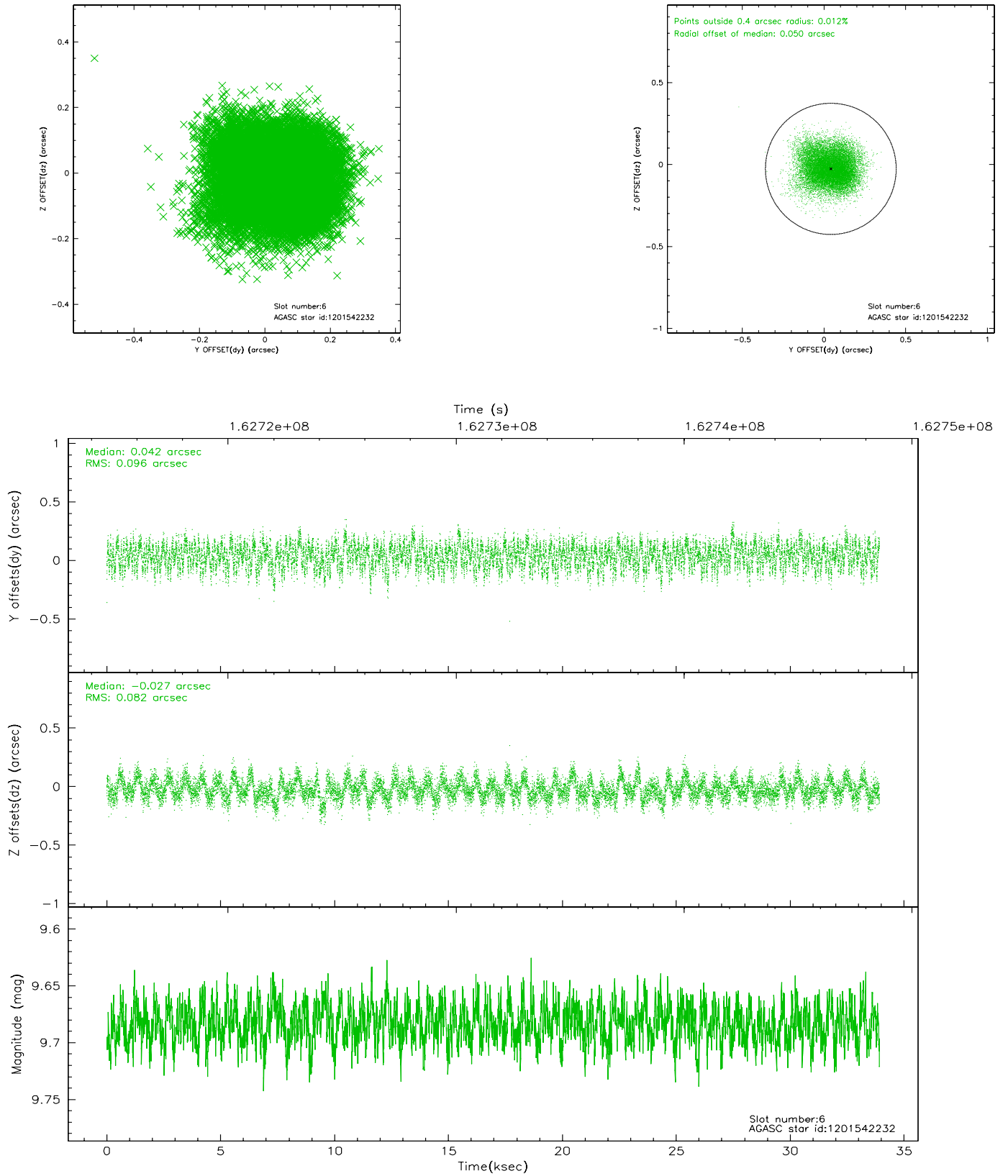
2.4.2 Slot 4



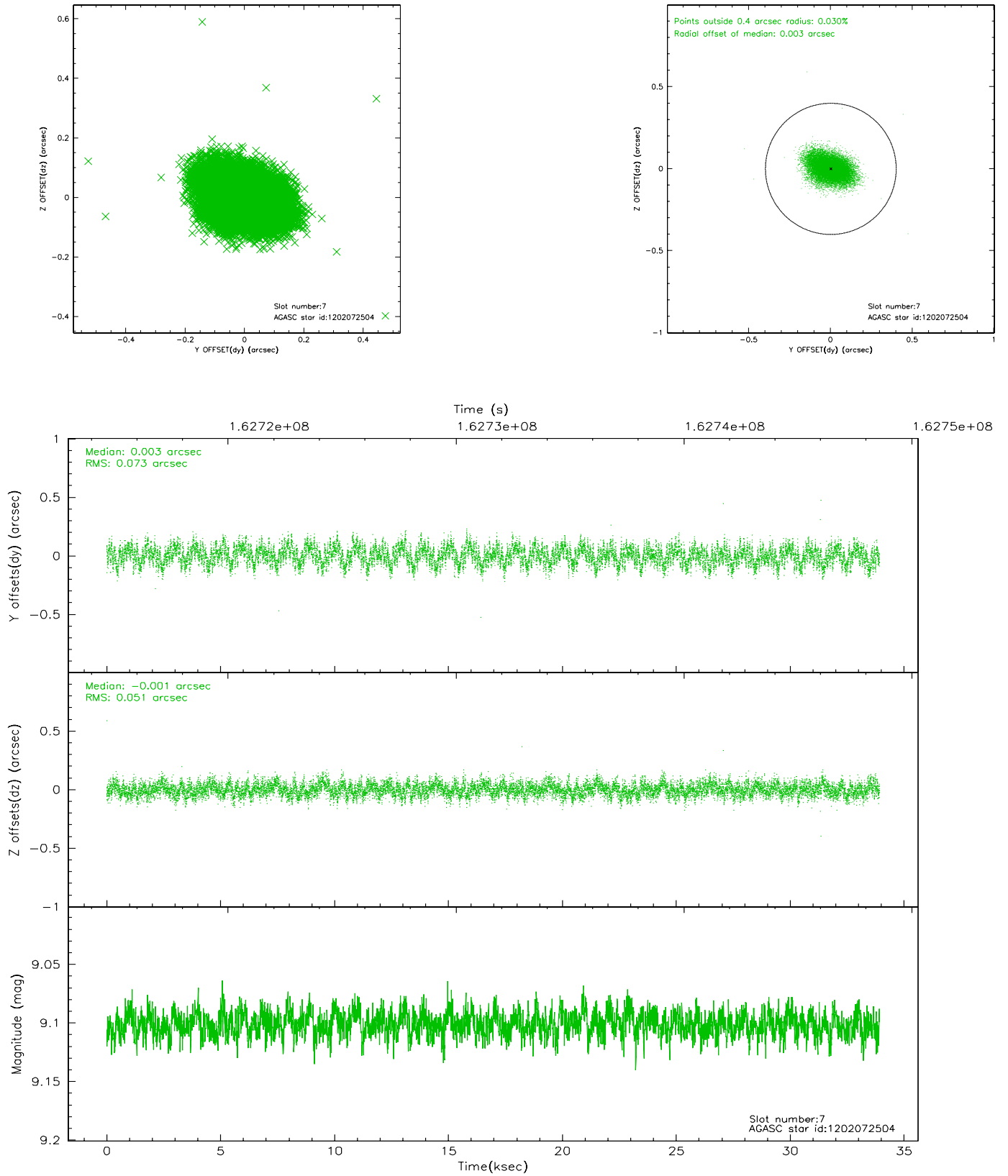
2.4.3 Slot 5



2.4.4 Slot 6

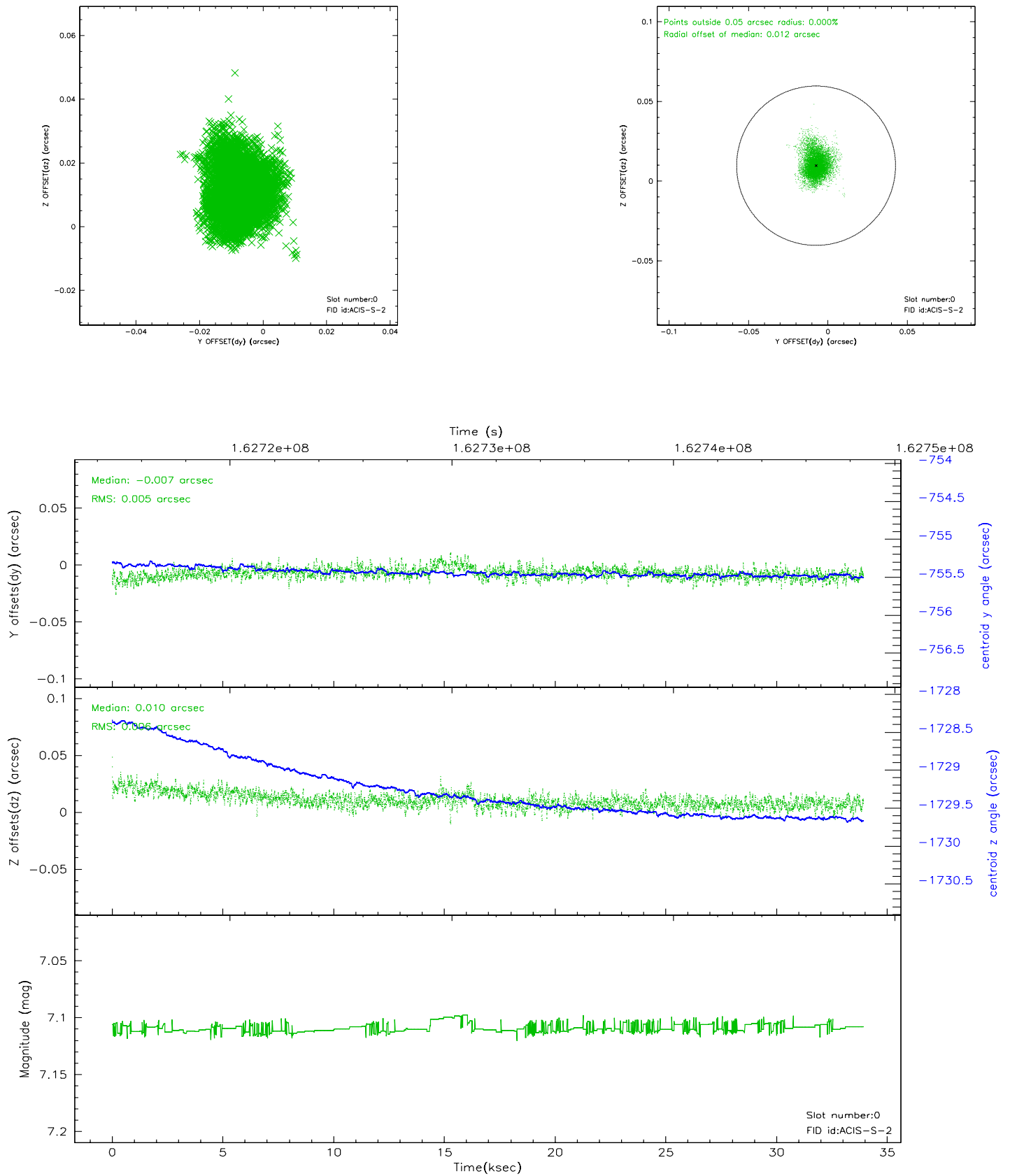


2.4.5 Slot 7

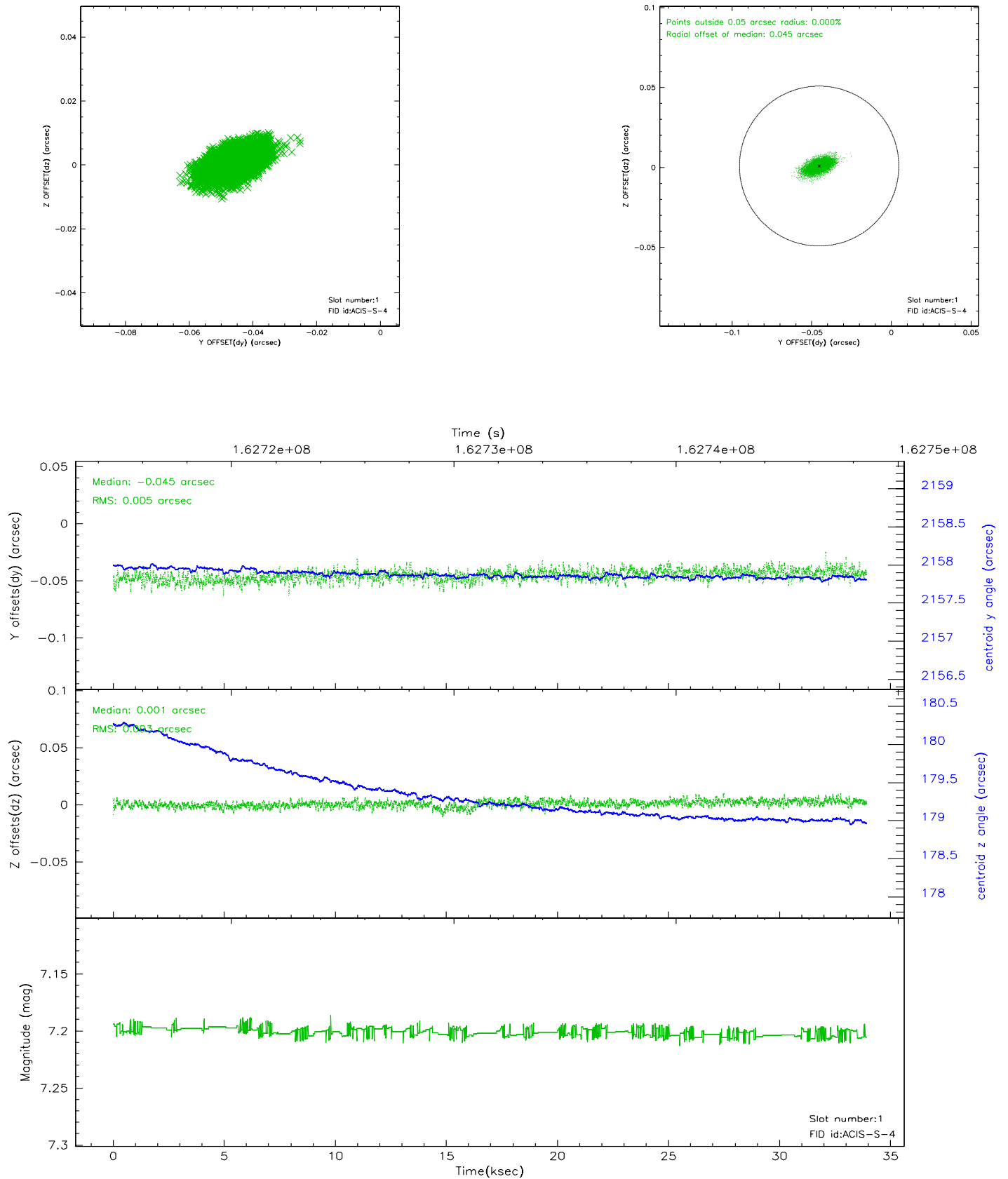


2.5 FID Slots

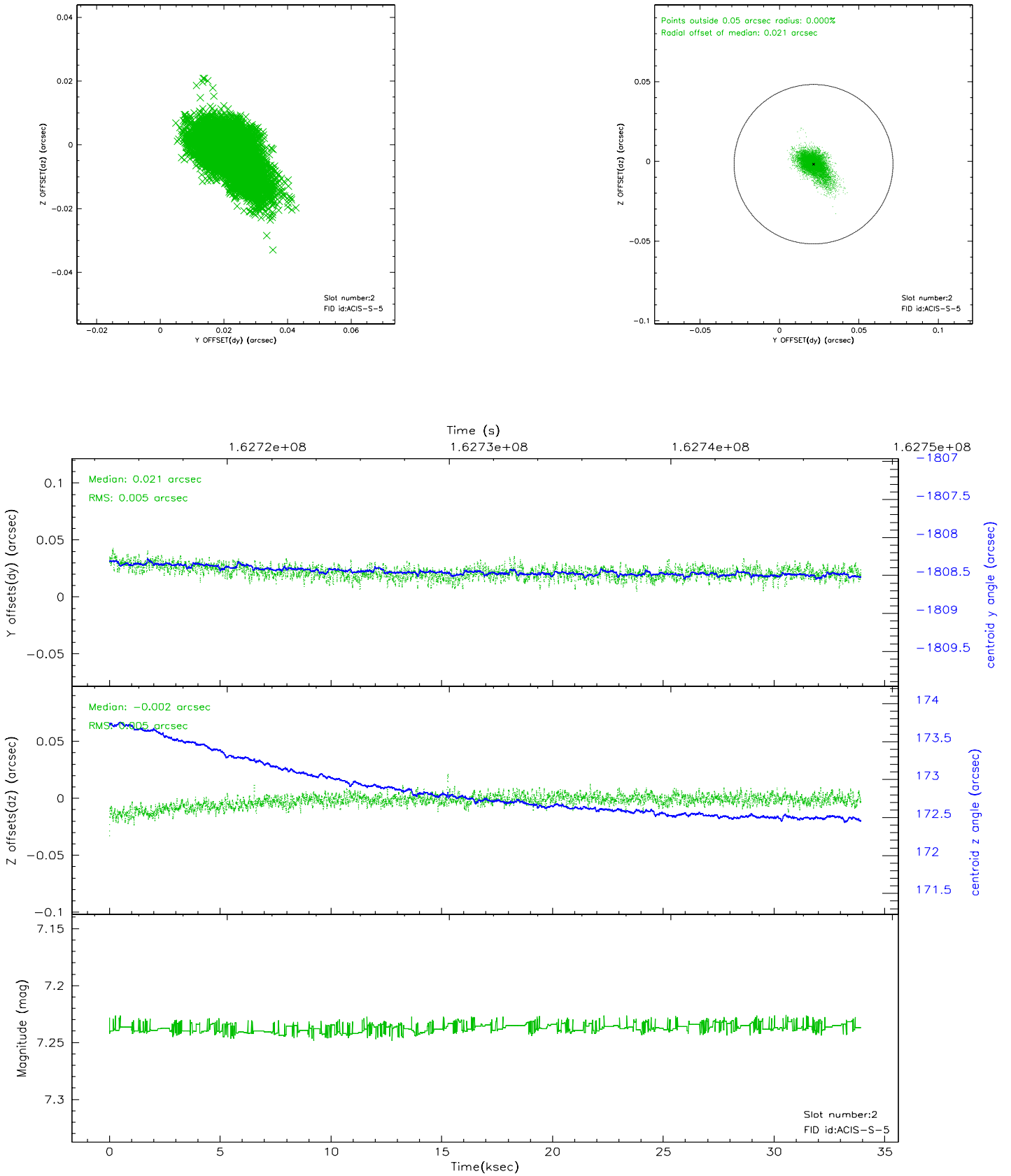
2.5.1 Slot 0



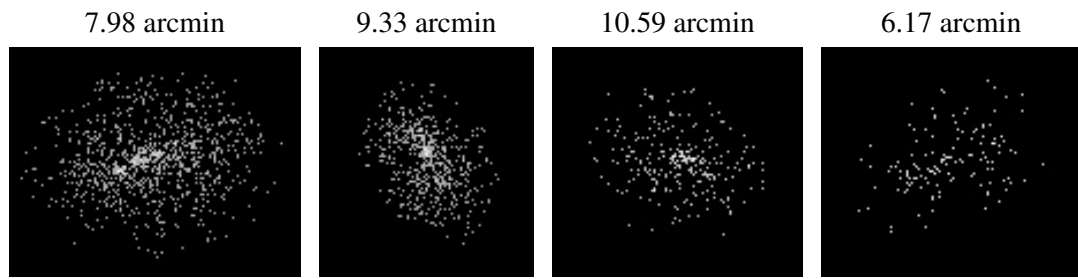
2.5.2 Slot 1



2.5.3 Slot 2



3 Point Sources



A Summary

A.1 Status

V&V Scientist	Beth Sundheim
V&V Date (YYYY-MM-DD)	2006.07.23
V&V Edition	1
V&V Disposition and Status	OK
V&V Charge Time	33.554

A.2 Comments