

V&V Reference Report

L2 ASCDS Version : 7.6.8

Observation 3698 - L2 Version 3
Chandra X-Ray Center

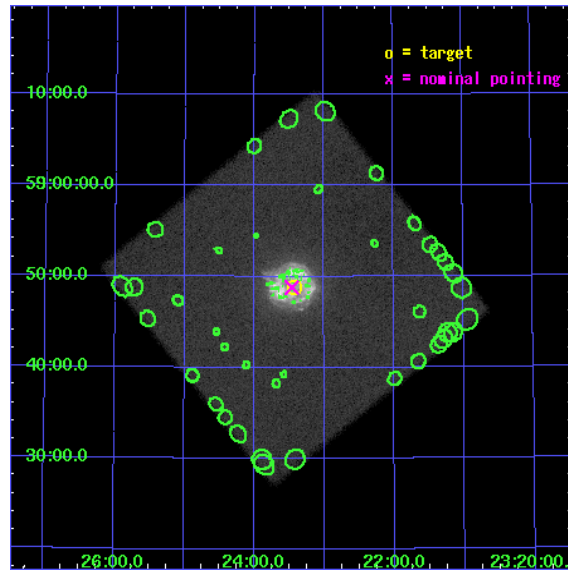
L2 Processing Date : Nov 23 2007

Contents

1	Front	2
2	OBI	3
2.1	OBI	3
2.1.1	Images	3
2.1.2	Parameters	4
2.1.3	Events	4
2.2	Compared Parameters	5
2.3	Aspect	6
2.4	Star Slots	9
2.4.1	Slot 3	9
2.4.2	Slot 4	10
2.4.3	Slot 5	11
2.4.4	Slot 6	12
2.4.5	Slot 7	13
2.5	FID Slots	14
2.5.1	Slot 0	14
2.5.2	Slot 1	15
2.5.3	Slot 2	16
3	Point Sources	17
A	Summary	18
A.1	Status	18
A.2	Comments	18

1 Front

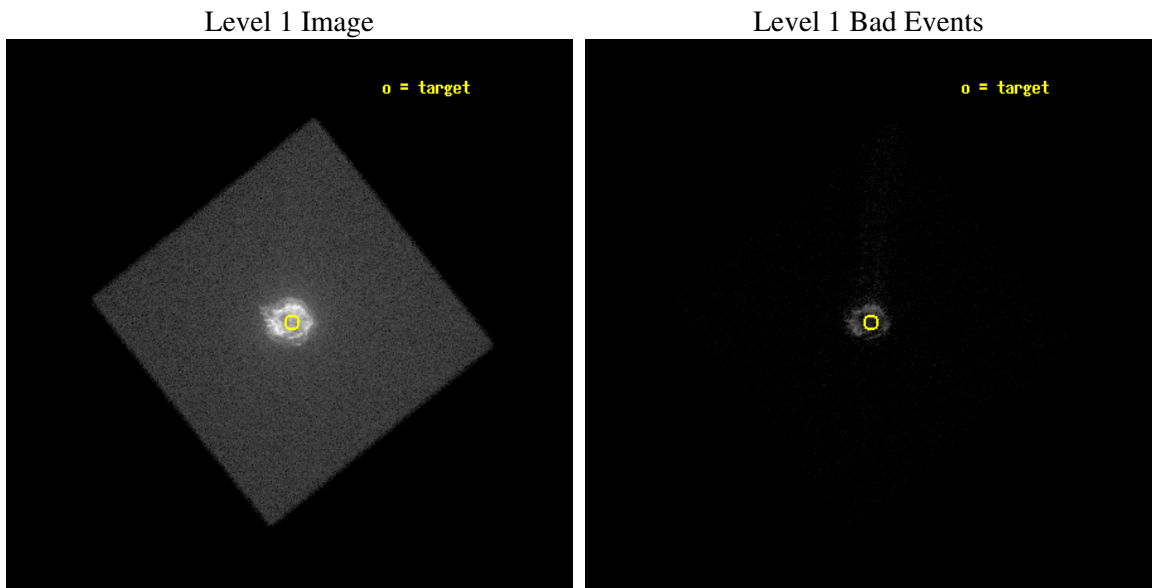
seq_num	590310
obs_id	3698
title	AO4A OBSERVATIONS OF THE STANDARD CANDLES CAS A AND G21.5-09
observer	Dr. CXC Calibration
object	CAS A
ra_targ	350.8575
dec_targ	58.814833
ra_nom	350.86516951763
dec_nom	58.813611719592
roll_nom	6.2944119335739
revision	3
ontime	5171.3814679384
livetime	5026.2062524027
l2events	710244



2 OBI

2.1 OBI

2.1.1 Images



2.1.2 Parameters

obi_num	0
ascdsver	7.6.11.2
caldbver	3.4.1
date	2007-11-23T18:42:18
revision	3

sched_exp_time	5299.984000
ontime	5171.3814679384
l1events	898330

2.1.3 Events

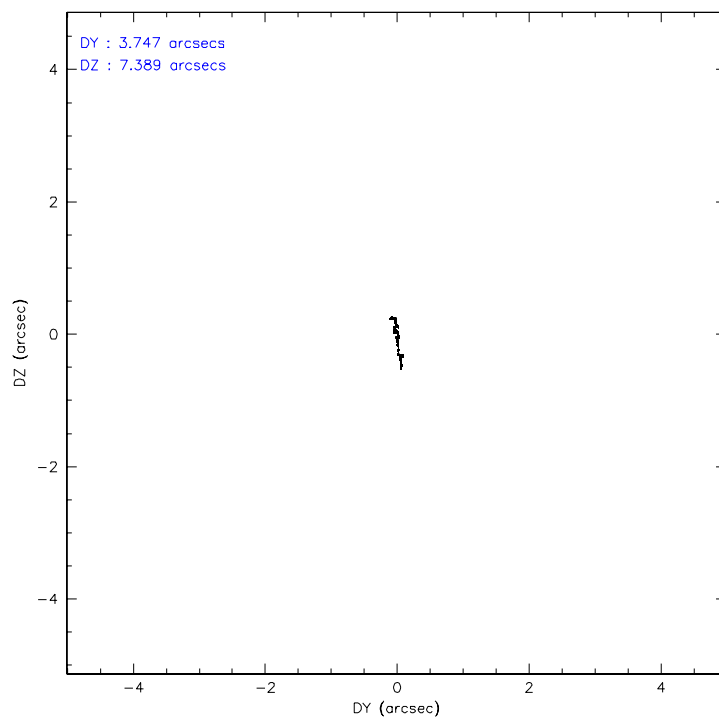
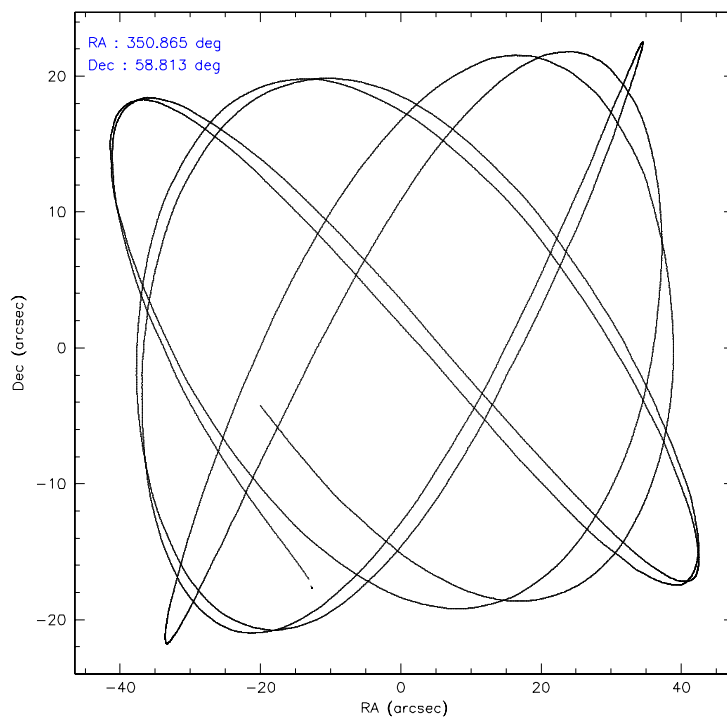
Level 1 Events

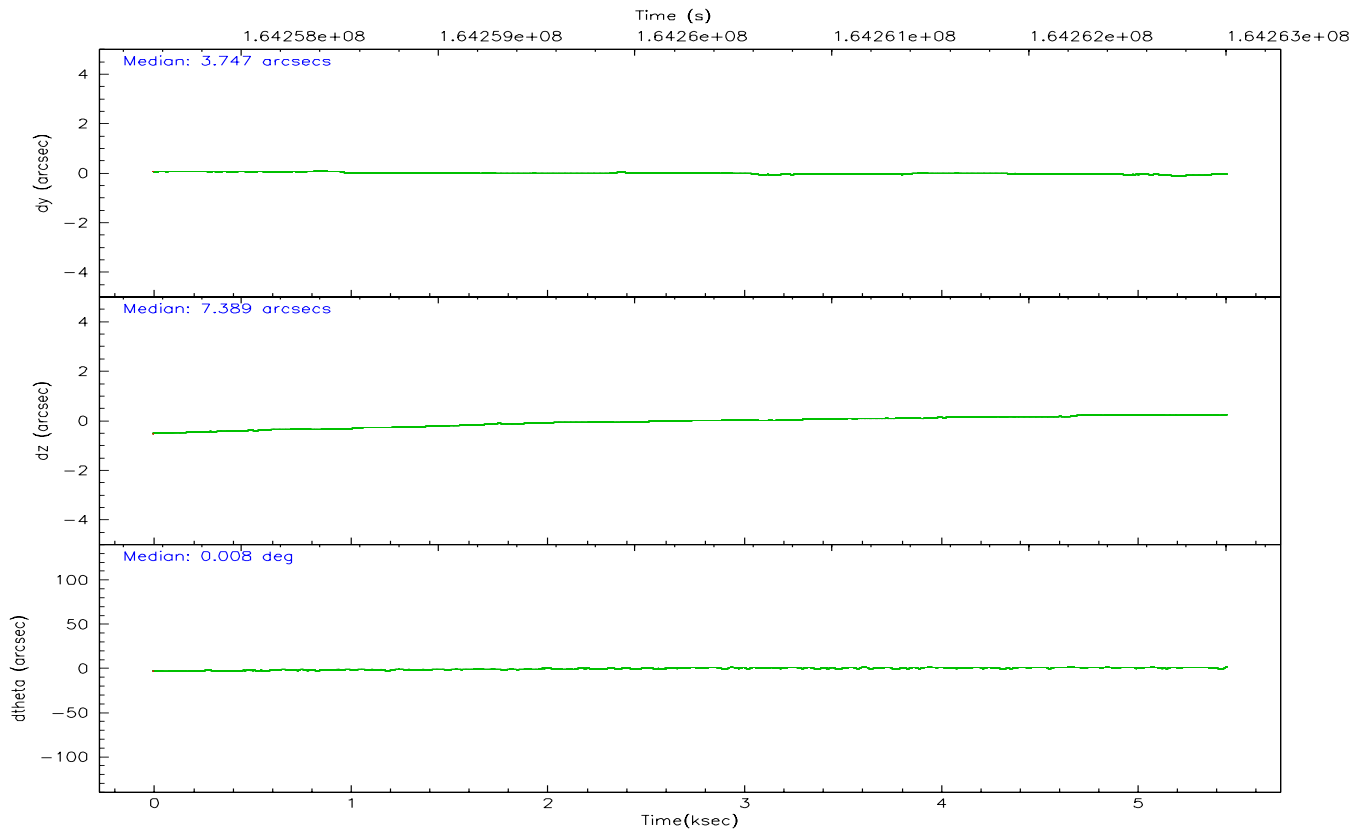
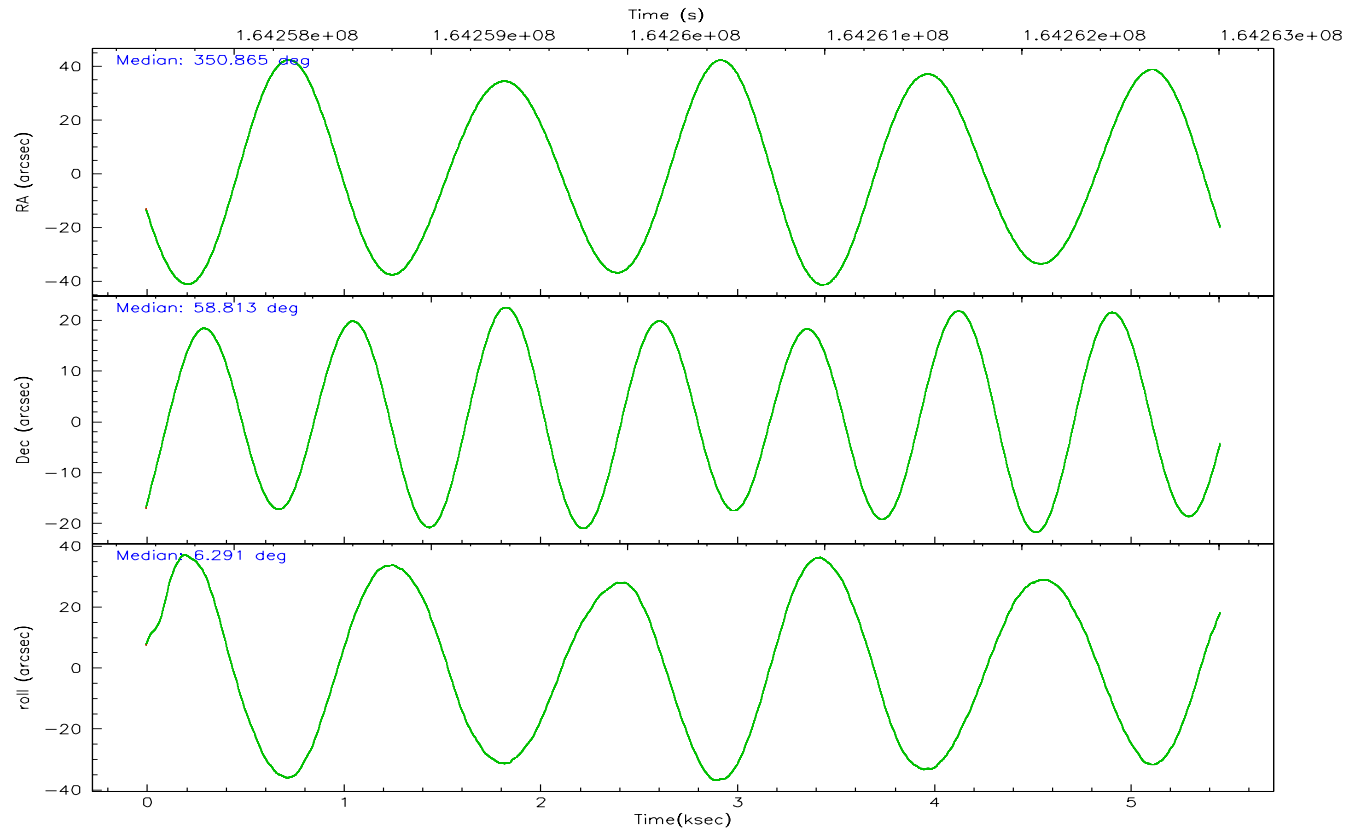
	segment 0
level 1 events	898330
rejected events	31191
rejected %	3%

2.2 Compared Parameters

Parameter	Planned	Actual	Parameter	Planned	Actual
Instrument	HRC	HRC	Obspar format version number	6	6
Detector	HRC-I	HRC-I	Obspar file type	PREDICTED	ACTUAL
Grating	NONE	NONE	Obspar update status	NONE	UPDATED
Data mode	OBSERVING	OBSERVING			
Observation mode	POINTING	POINTING			
Pointing RA	350.823779	350.8651695176326			
Pointing Dec	58.797110	58.8136117195921			
Pointing Roll	6.425313	6.294411933573911			
Window start time	164073664.184000	164073664.184000			
Window stop time	168134464.184000	168134464.184000			
SIM focus pos (mm)	-1.040293	-1.038866356238299			
SIM defocus (mm)	0	0.001426264420575141			
SIM translation stage pos (mm)	126.985494	126.9829799899862			
SIM translation stage offset (mm)	0	0.002508901615314585			
Observation start time	164257704.184000	164257300.03968			
Observation start date	2003-03-17T03:07:20	2003-03-17T03:01:40			
Observation end time	164263004.184000	164263318.83994			
Observation end date	2003-03-17T04:35:40	2003-03-17T04:41:58			

2.3 Aspect



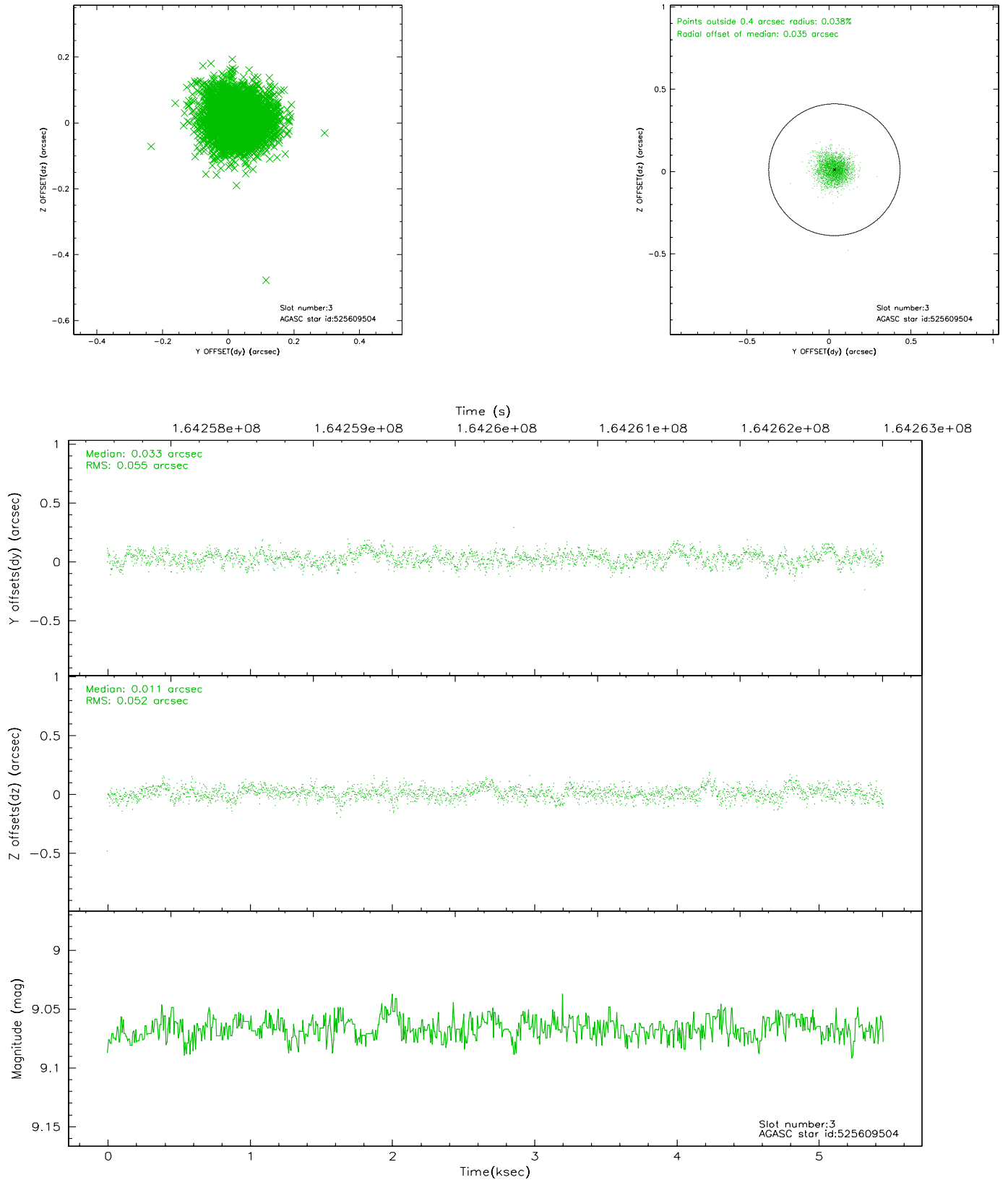


Slot Statistics

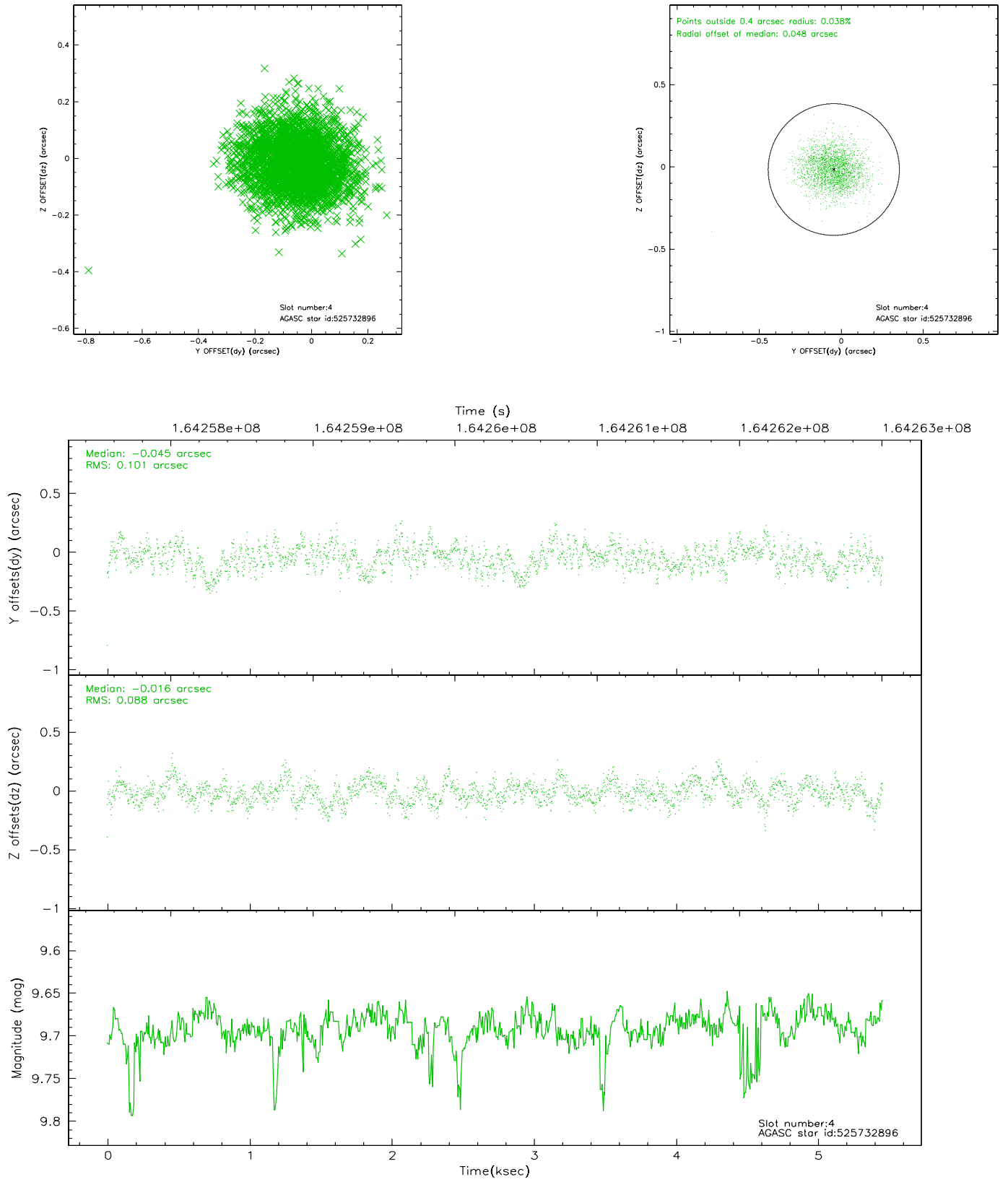
slot	status	id	mag	n_pts	med_dy	med_dz	dr1	dr2	ra	dec	mean_y	mean_z
0	FID	HRC-I-1	6.99	1332	0.018	0.004	0.013	0.019	0.000000	0.000000	-759.21	-1295.20
1	FID	HRC-I-2	7.03	1332	0.111	-0.095	0.011	0.017	0.000000	0.000000	852.95	-1297.82
2	FID	HRC-I-3	7.08	1332	-0.011	0.000	0.009	0.013	0.000000	0.000000	-1187.10	1008.38
3	GUIDE	525609504	9.07	2663	0.033	0.011	0.081	0.129	349.896632	58.356658	-1915.93	-1367.51
4	GUIDE	525732896	9.69	2657	-0.045	-0.016	0.144	0.228	351.456486	59.410070	1398.71	2068.43
5	GUIDE	525732488	8.41	2664	-0.015	-0.014	0.077	0.123	350.087090	58.516915	-1487.53	-838.83
6	GUIDE	525735976	8.86	2664	-0.052	-0.031	0.084	0.131	350.142956	58.277622	-1489.53	-1707.86
7	GUIDE	525732528	9.36	2660	0.085	0.049	0.104	0.175	351.607241	59.298932	1633.72	1642.28

2.4 Star Slots

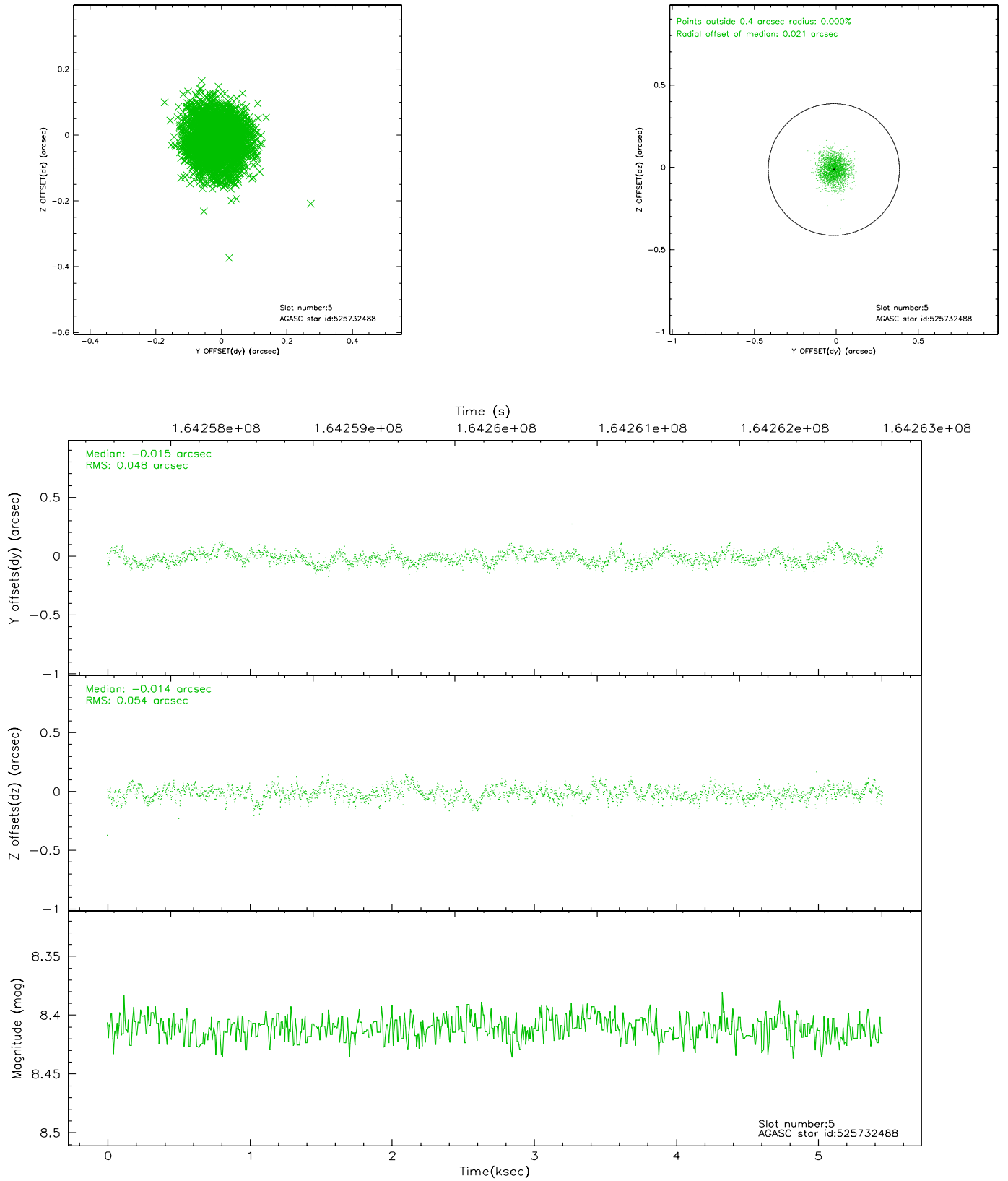
2.4.1 Slot 3



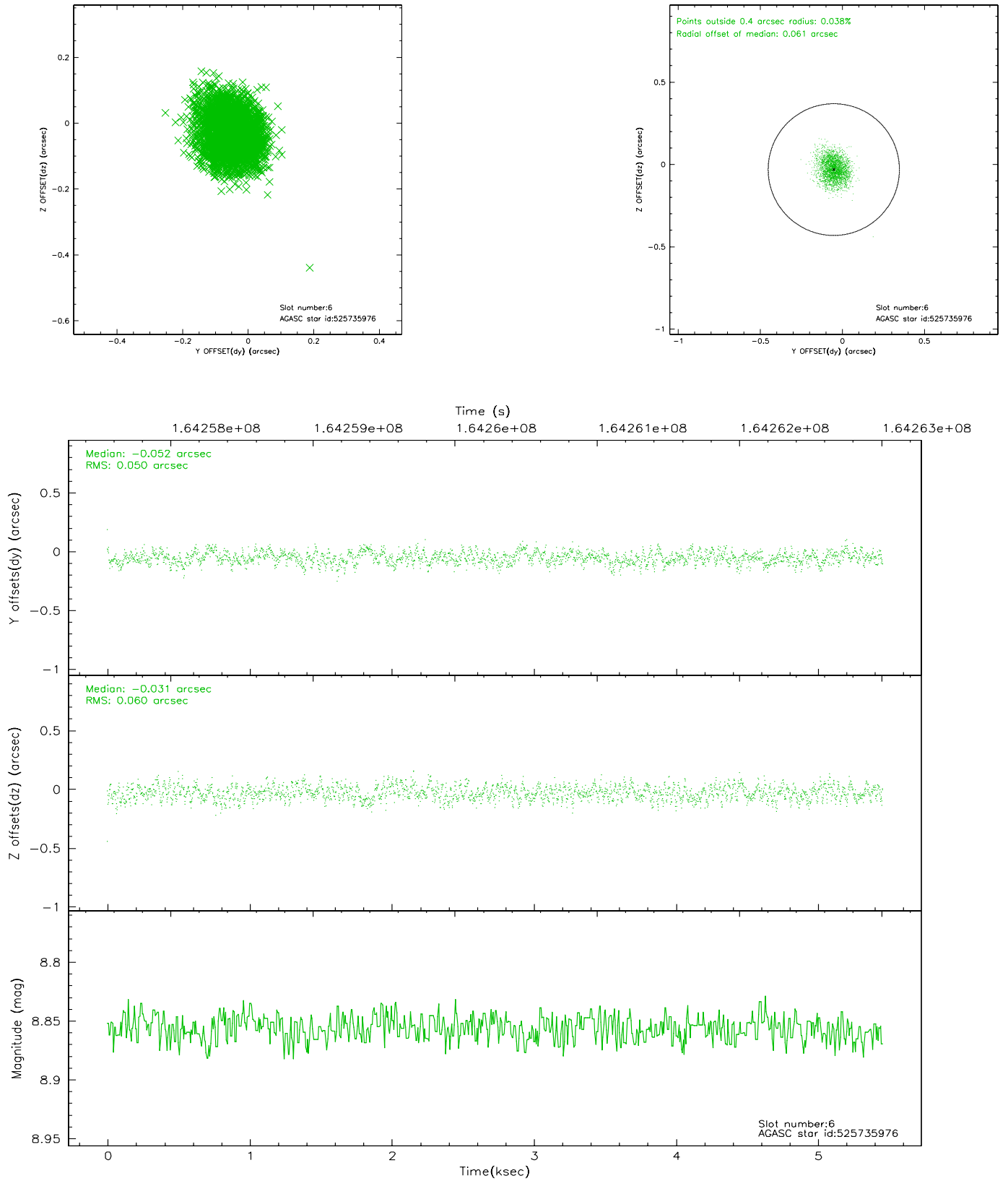
2.4.2 Slot 4



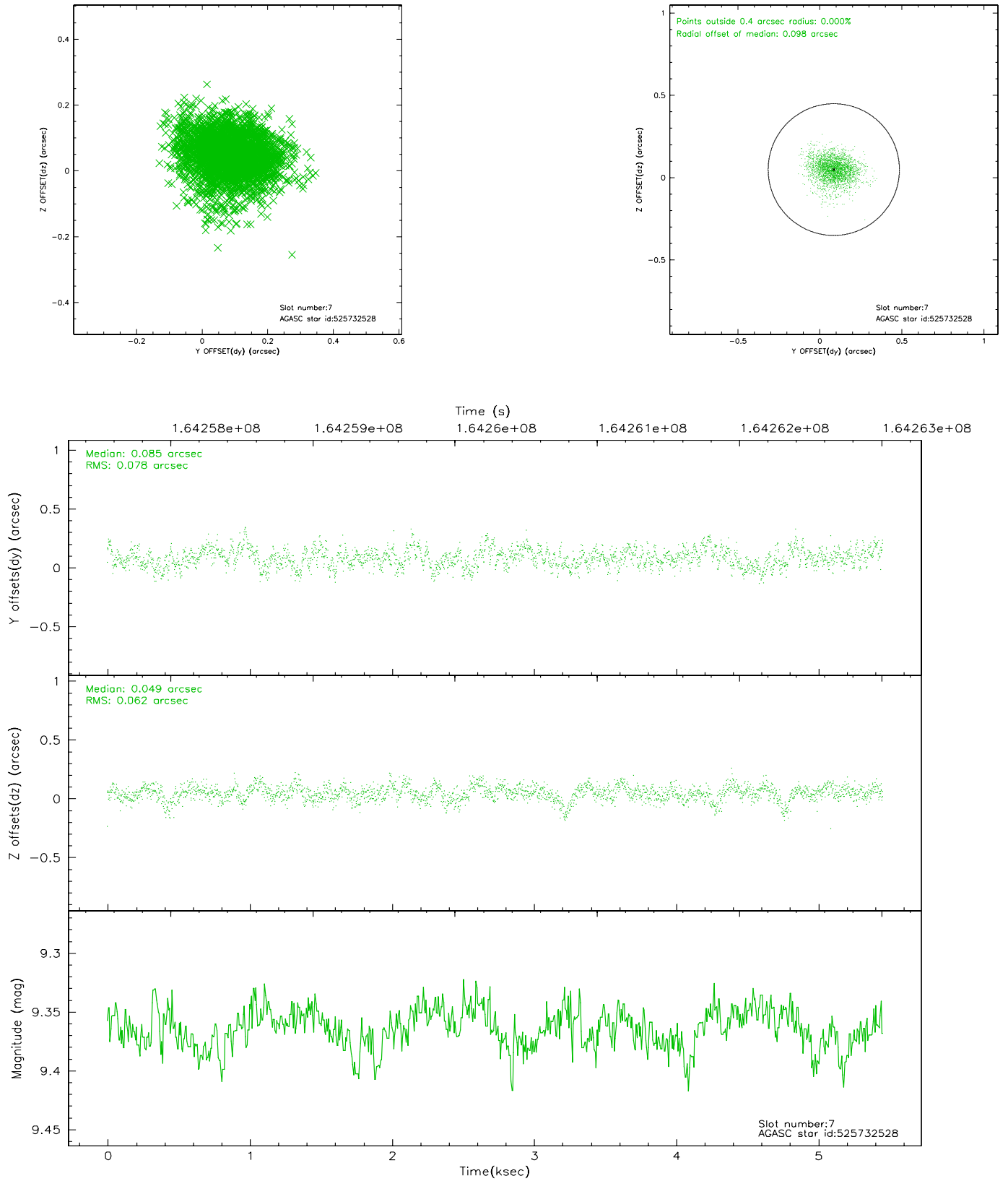
2.4.3 Slot 5



2.4.4 Slot 6

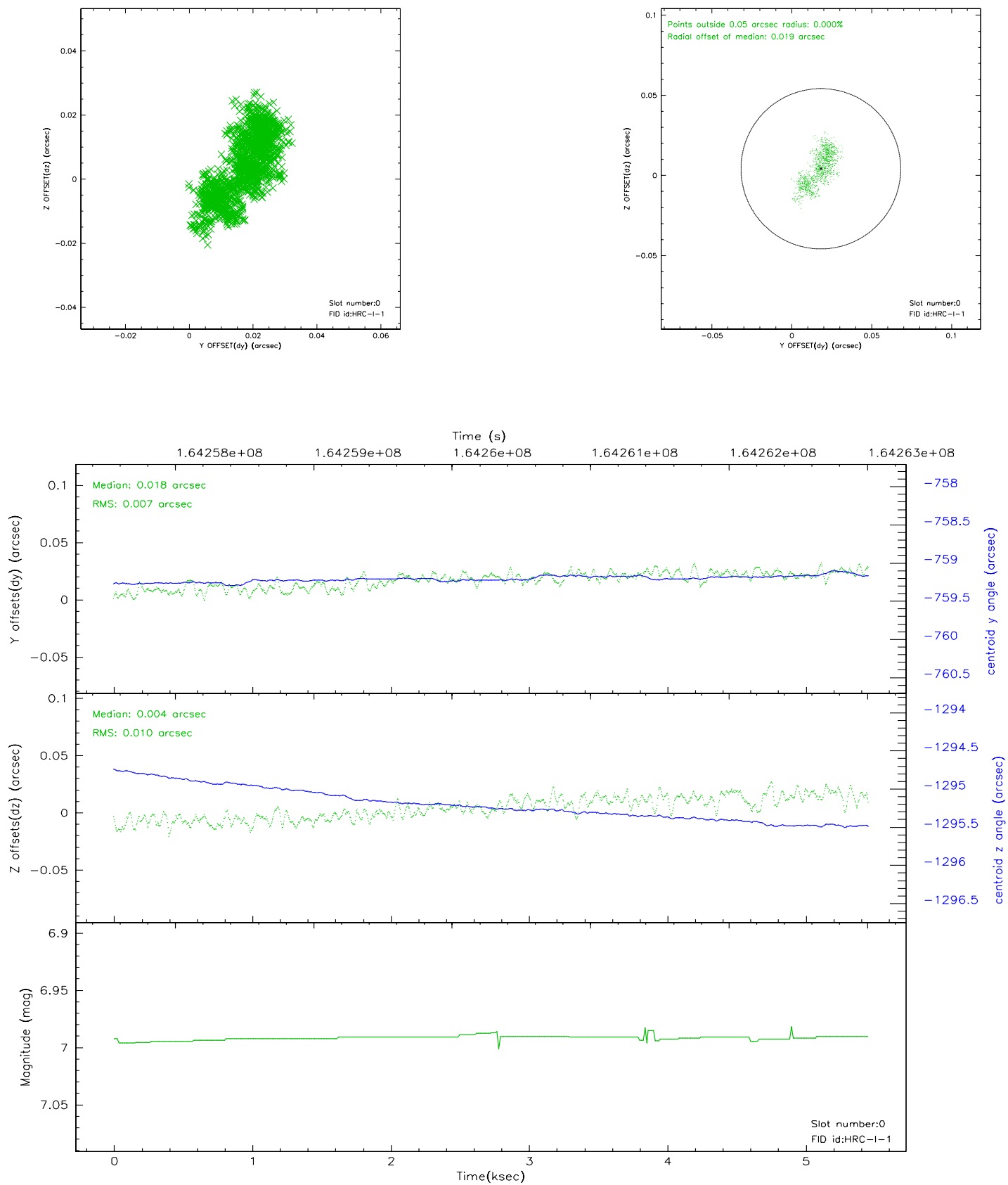


2.4.5 Slot 7

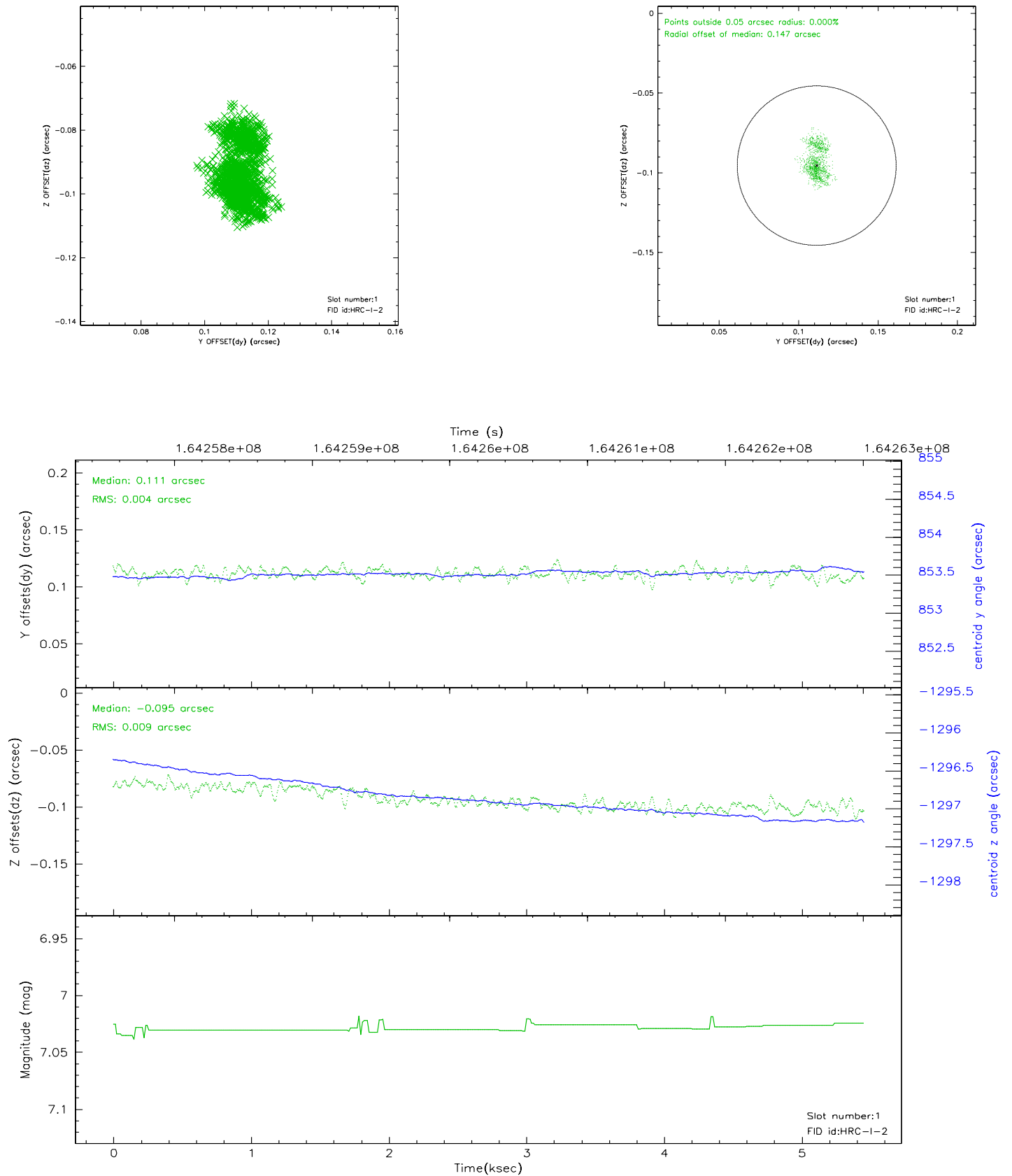


2.5 FID Slots

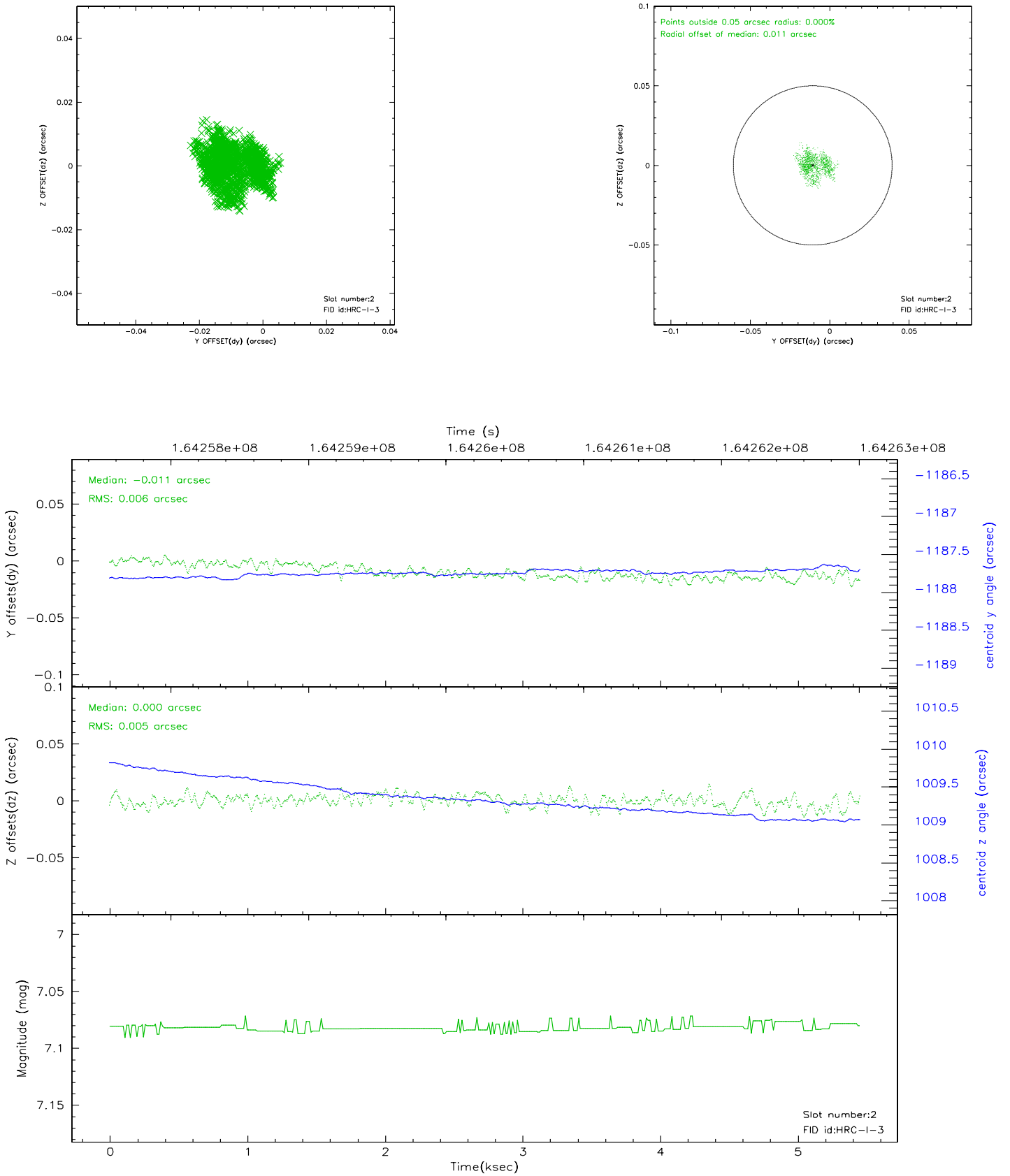
2.5.1 Slot 0



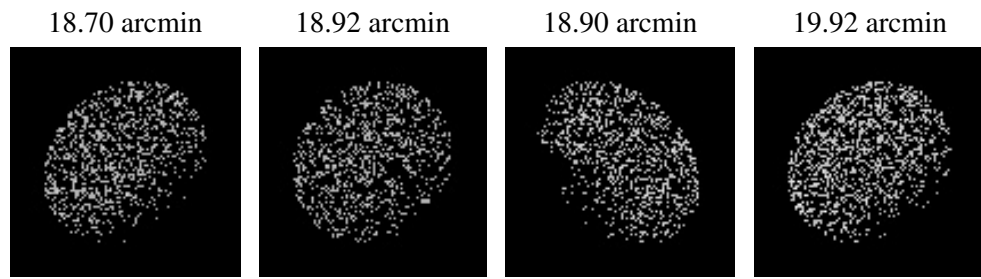
2.5.2 Slot 1



2.5.3 Slot 2



3 Point Sources



A Summary

A.1 Status

V&V Scientist	Jen Lauer
V&V Date (YYYY-MM-DD)	2007.12.05
V&V Edition	1
V&V Disposition and Status	OK
V&V Charge Time	5.171

A.2 Comments

Window constraint satisfied.

The current observation has been reprocessed as part of Repro III ('C' supplement) the purpose of which is to update all HRC-I ObsIDs since Jan 2000 to the latest calibrations available for that configuration. Specifically, we are updating the DEGAP solution and the Gain Maps applied. For more information see the Repro IIIC web page at

<http://asc.harvard.edu/cda/repro3.html#IIIC>

and the associated links.