

# V&V Reference Report

## L2 ASCDS Version : 7.6.8

Observation 3518 - L2 Version 001  
Chandra X-Ray Center

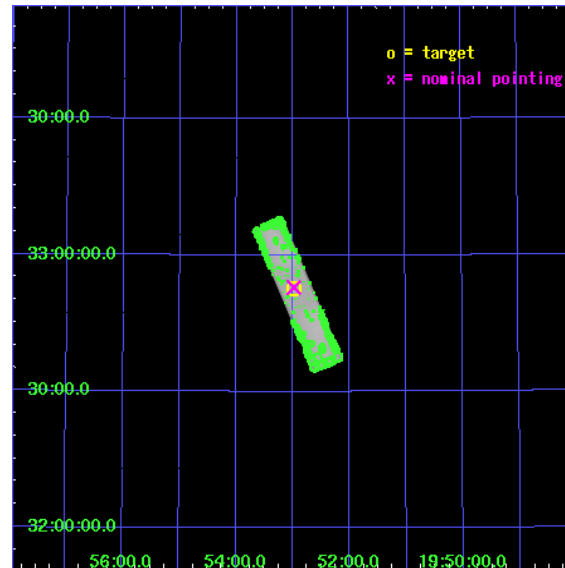
L2 Processing Date : Jul 24 2006

## Contents

<b>1</b>	<b>Front</b>	<b>2</b>
<b>2</b>	<b>OBI</b>	<b>3</b>
2.1	OBI . . . . .	3
2.1.1	Images . . . . .	3
2.1.2	Parameters . . . . .	4
2.1.3	Events . . . . .	4
2.2	Compared Parameters . . . . .	5
2.3	Aspect . . . . .	6
2.4	Star Slots . . . . .	9
2.4.1	Slot 3 . . . . .	9
2.4.2	Slot 4 . . . . .	10
2.4.3	Slot 5 . . . . .	11
2.4.4	Slot 6 . . . . .	12
2.4.5	Slot 7 . . . . .	13
2.5	FID Slots . . . . .	14
2.5.1	Slot 0 . . . . .	14
2.5.2	Slot 1 . . . . .	15
2.5.3	Slot 2 . . . . .	16
<b>3</b>	<b>Point Sources</b>	<b>17</b>
<b>A</b>	<b>Summary</b>	<b>18</b>
A.1	Status . . . . .	18
A.2	Comments . . . . .	18

# 1 Front

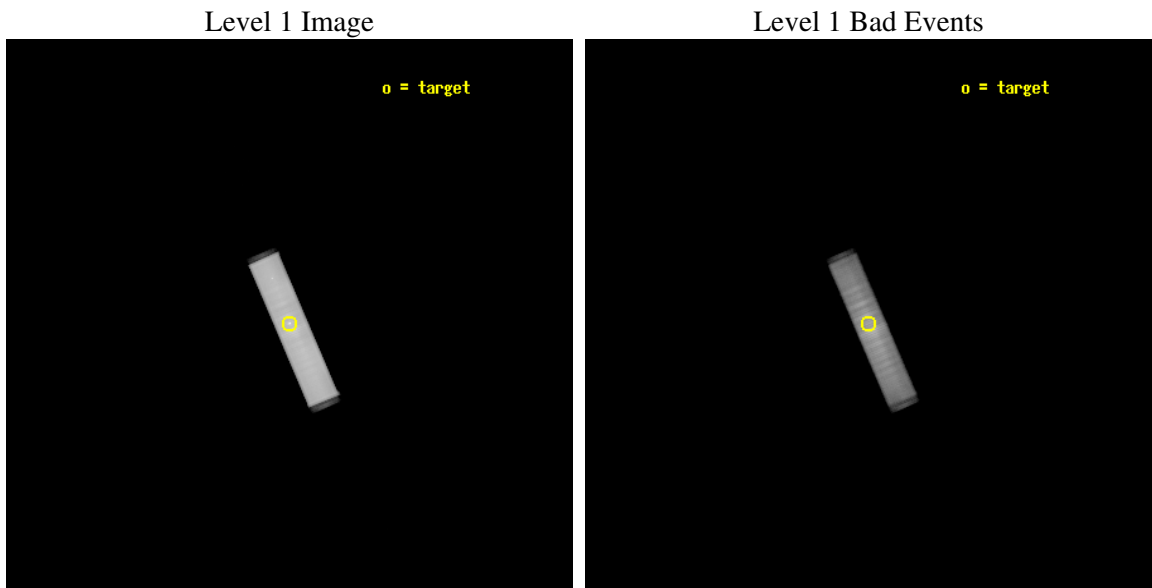
seq_num	500306
obs_id	3518
title	SURFACE TEMPERATURE OF ISOLATED NEUTRON STARS
observer	Dr. Stephen Murray
object	CTB 80
ra_targ	298.2425
dec_targ	32.878056
ra_nom	298.24481980503
dec_nom	32.882260306784
roll_nom	66.614945955514
revision	2
ontime	64313.883949488
livetime	64008.343023566
l2events	2898624



## 2 OBI

### 2.1 OBI

#### 2.1.1 Images



### 2.1.2 Parameters

obi_num	0
ascdsver	7.6.8
caldbver	3.2.2
date	2006-07-24T21:36:57
revision	2

sched_exp_time	64400.000000
ontime	64403.827713281
l1events	4040146

### 2.1.3 Events

Level 1 Events

	<b>segment 1</b>	<b>segment 2</b>	<b>segment 3</b>
level 1 events	4019	4036110	17
rejected events	3760	971026	15
rejected %	93%	24%	88%

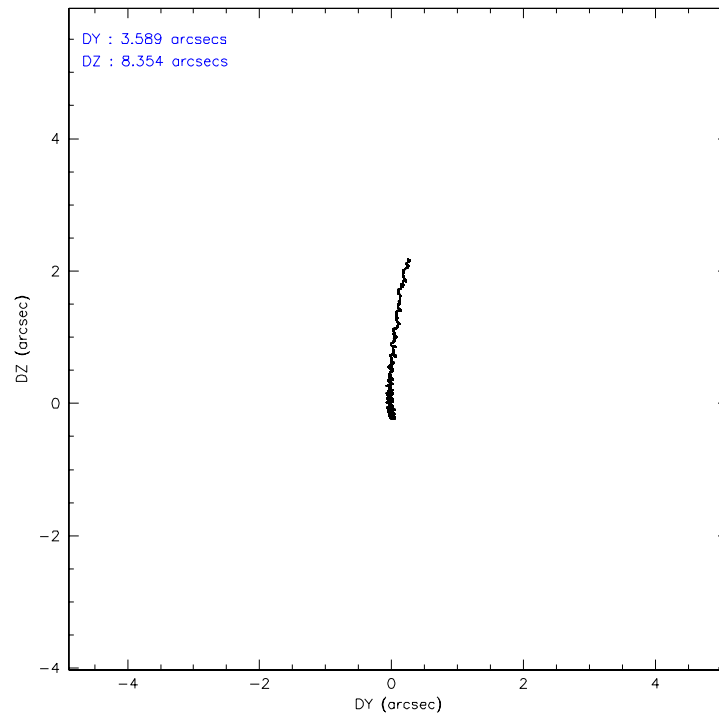
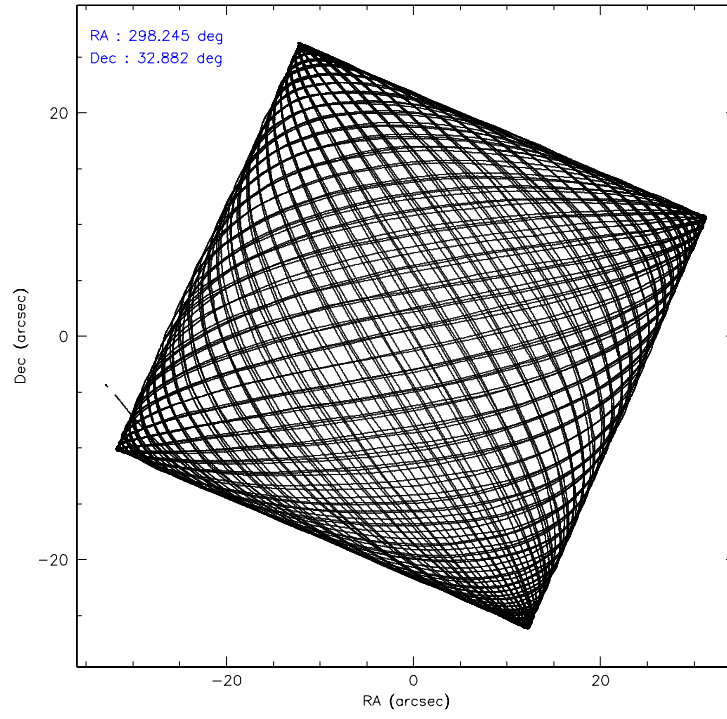


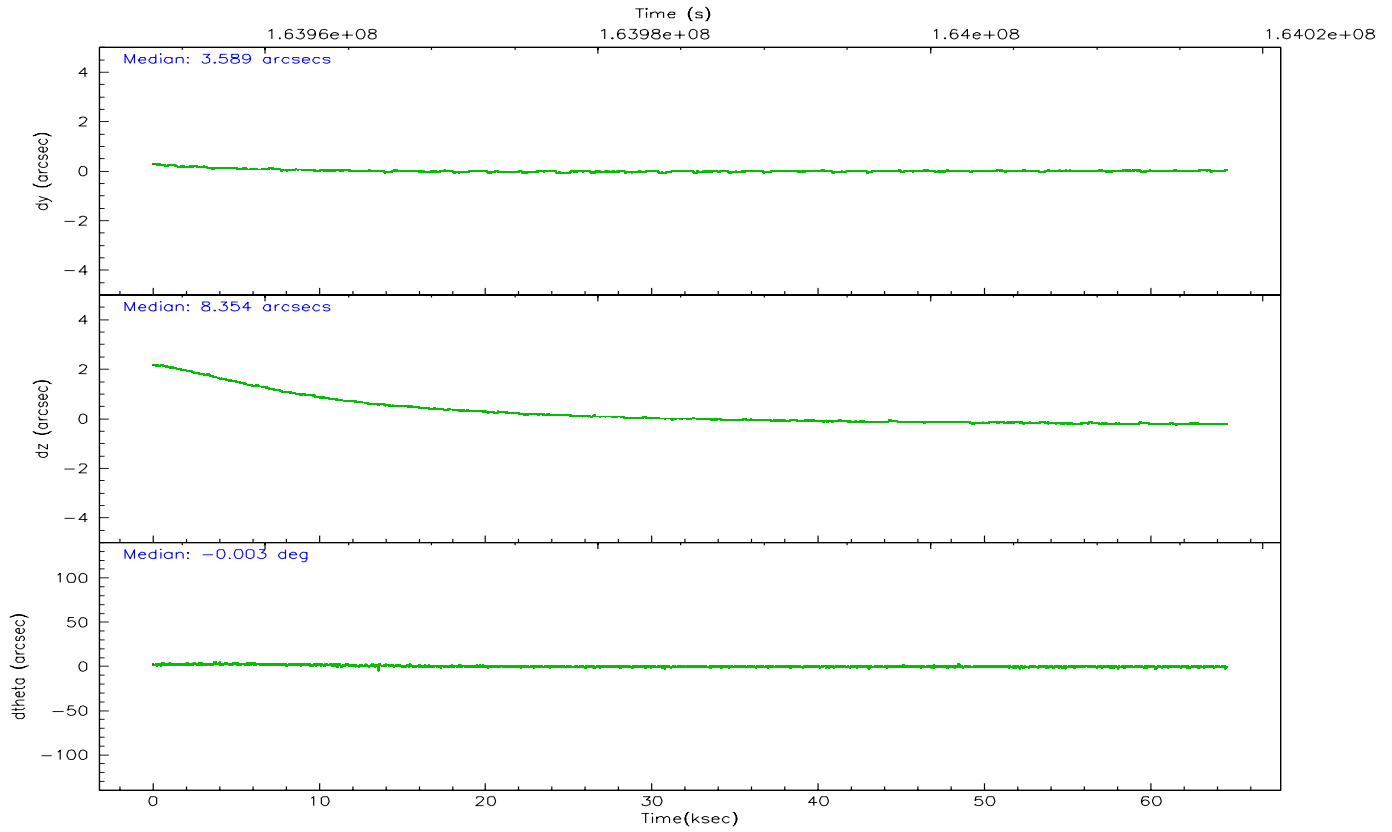
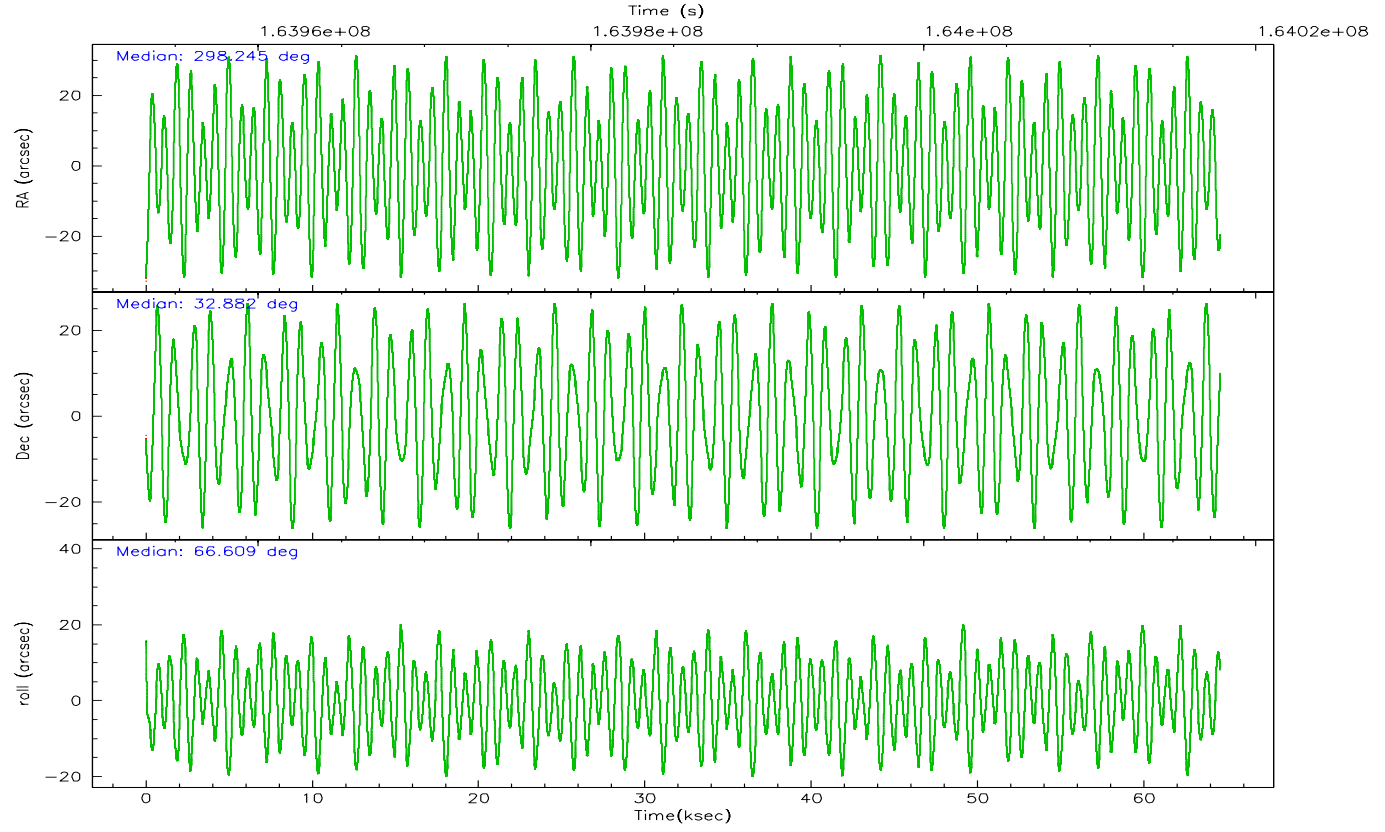
## 2.2 Compared Parameters

Parameter	Planned	Actual
Instrument	HRC	HRC
Detector	HRC-S	HRC-S
Grating	NONE	NONE
Data mode	OBSERVING	OBSERVING
Observation mode	POINTING	POINTING
Pointing RA	298.250450	298.2448198050341
Pointing Dec	32.854084	32.88226030678385
Pointing Roll	66.544553	66.61494595551386
SIM focus pos (mm)	-1.529586	-1.523540733526241
SIM defocus (mm)	0.003750771043328743	0.009795905878055677
SIM translation stage pos (mm)	250.455976	250.466033080201
SIM translation stage offset (mm)	0	-0.01005468664627074
Observation start time	163953434.184000	163952837.61435
Observation start date	2003-03-13T14:36:10	2003-03-13T14:27:17
Observation end time	164017834.184000	164018536.52961
Observation end date	2003-03-14T08:29:30	2003-03-14T08:42:16

Parameter	Planned	Actual
Obspar format version number	6	6
Obspar file type	PREDICTED	ACTUAL
Obspar update status	NONE	UPDATED

## 2.3 Aspect



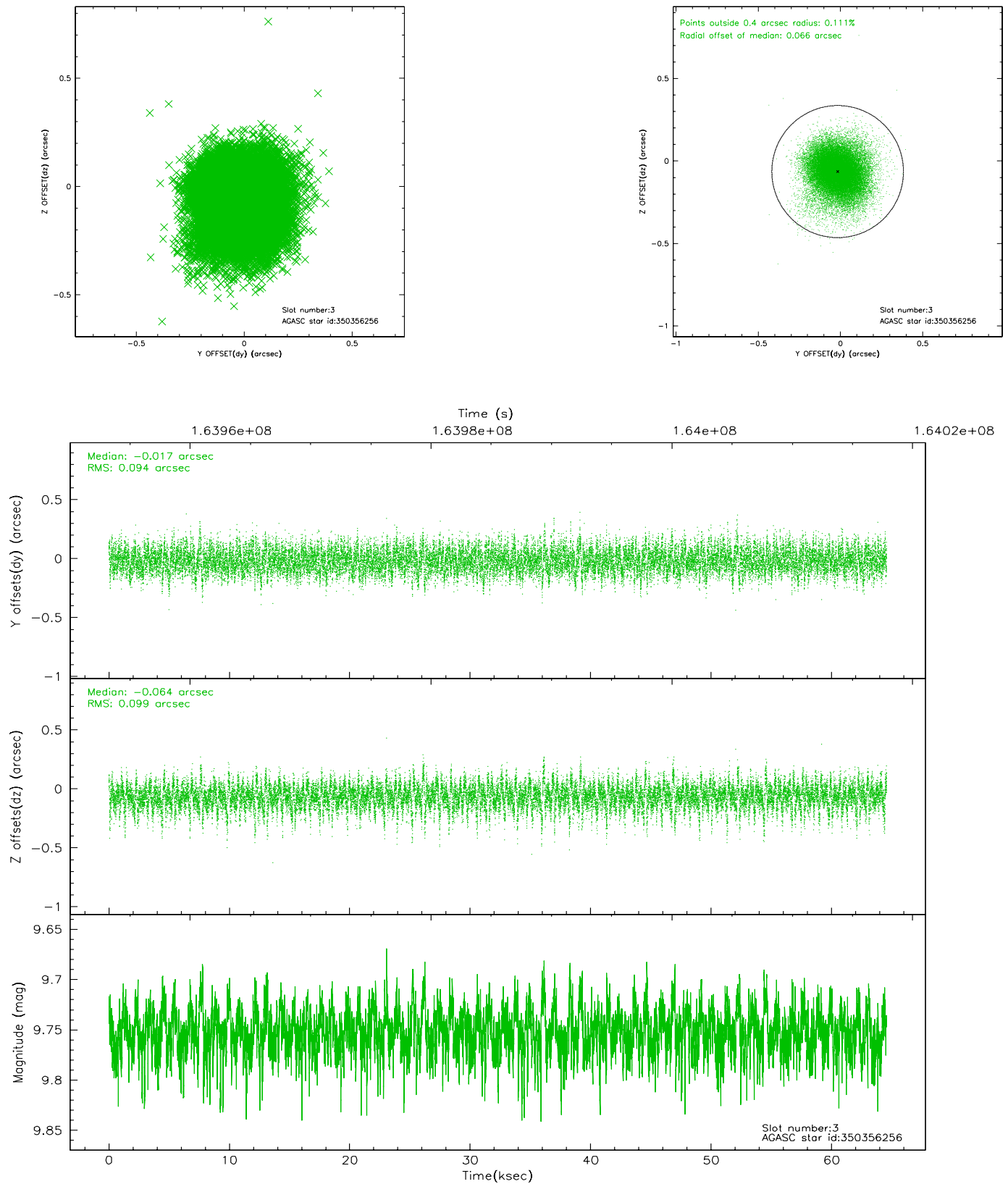


### Slot Statistics

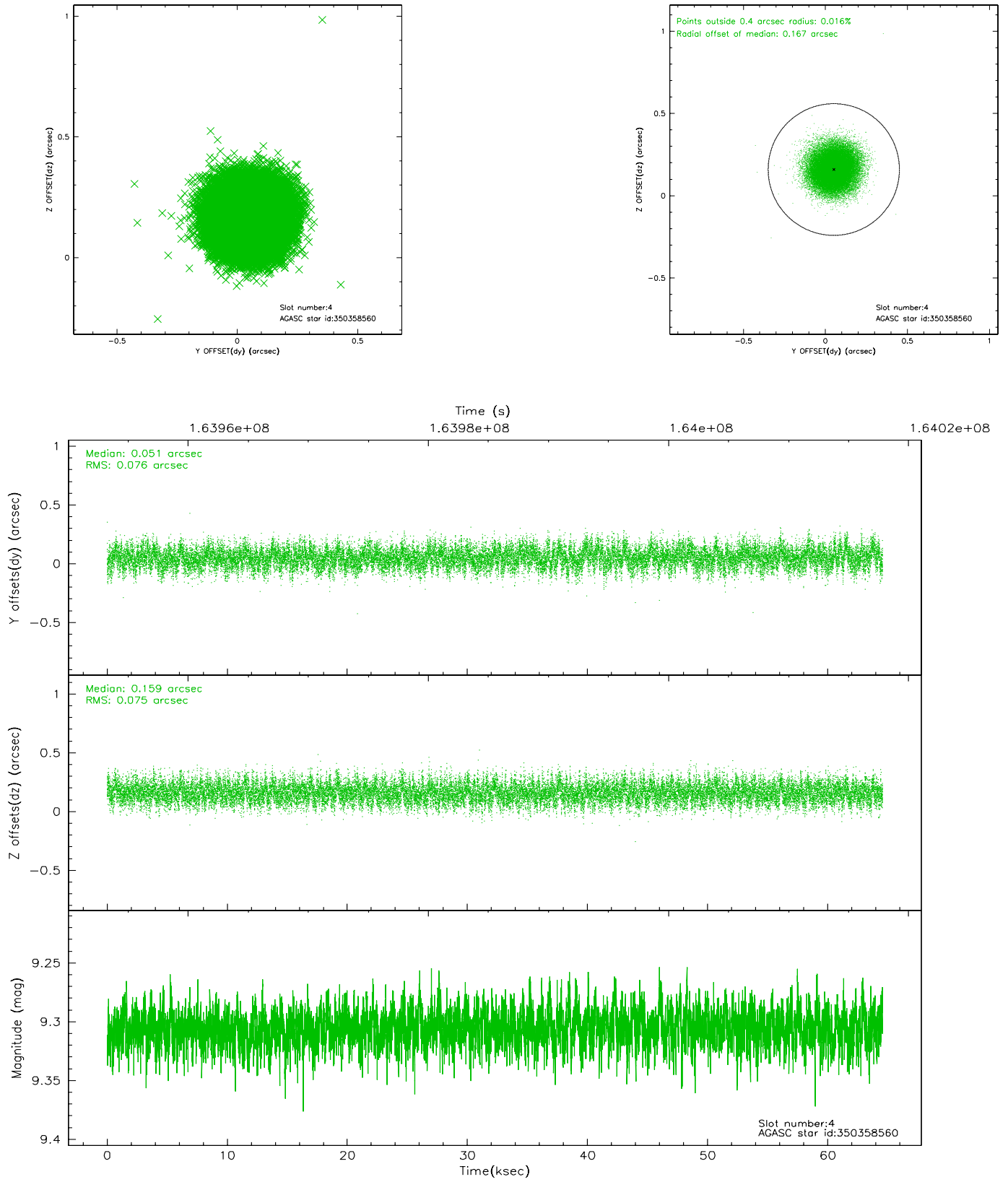
slot	status	id	mag	n_pts	med_dy	med_dz	dr1	dr2	ra	dec	mean_y	mean_z
0	FID	HRC-S-1	7.04	15753	0.159	-0.135	0.018	0.063	0.000000	0.000000	-1157.62	-457.24
1	FID	HRC-S-2	7.04	15753	0.088	-0.095	0.005	0.010	0.000000	0.000000	1241.90	-449.86
2	FID	HRC-S-3	7.06	15750	0.143	-0.072	0.019	0.066	0.000000	0.000000	-1160.27	572.34
3	GUIDE	350356256	9.75	31474	-0.017	-0.064	0.142	0.240	297.806752	33.419765	1340.14	2034.98
4	GUIDE	350358560	9.31	31487	0.051	0.159	0.115	0.182	298.717588	33.363378	2244.30	-557.00
5	GUIDE	350375208	10.02	31401	0.072	-0.231	0.155	0.254	297.378133	32.769927	-1318.92	2305.87
6	GUIDE	350380544	8.71	31493	-0.035	0.144	0.086	0.141	298.631008	32.076988	-2102.03	-2177.65
7	GUIDE	350385336	9.57	31481	-0.073	-0.008	0.105	0.173	298.654346	32.916364	693.89	-1029.46

## 2.4 Star Slots

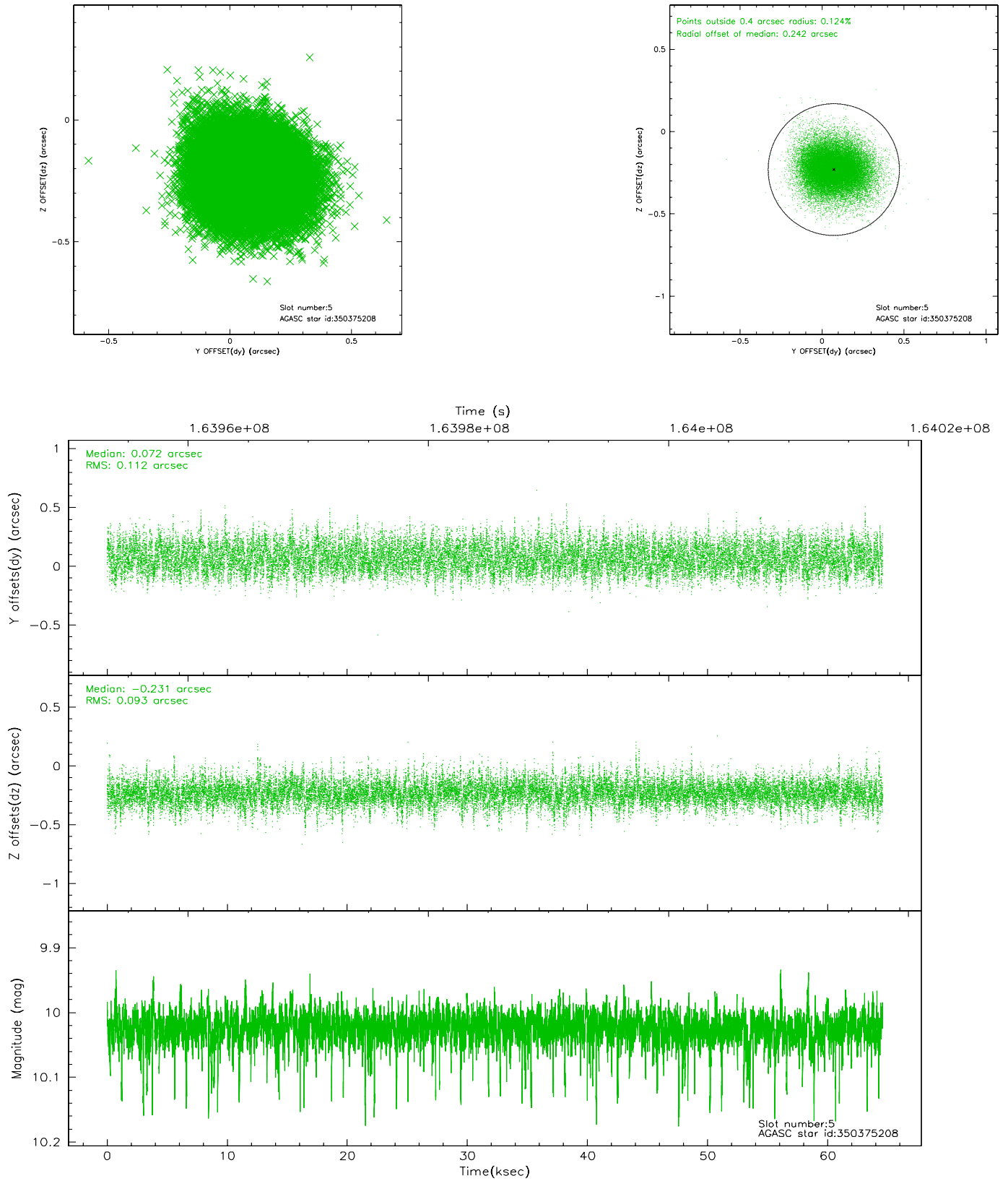
### 2.4.1 Slot 3



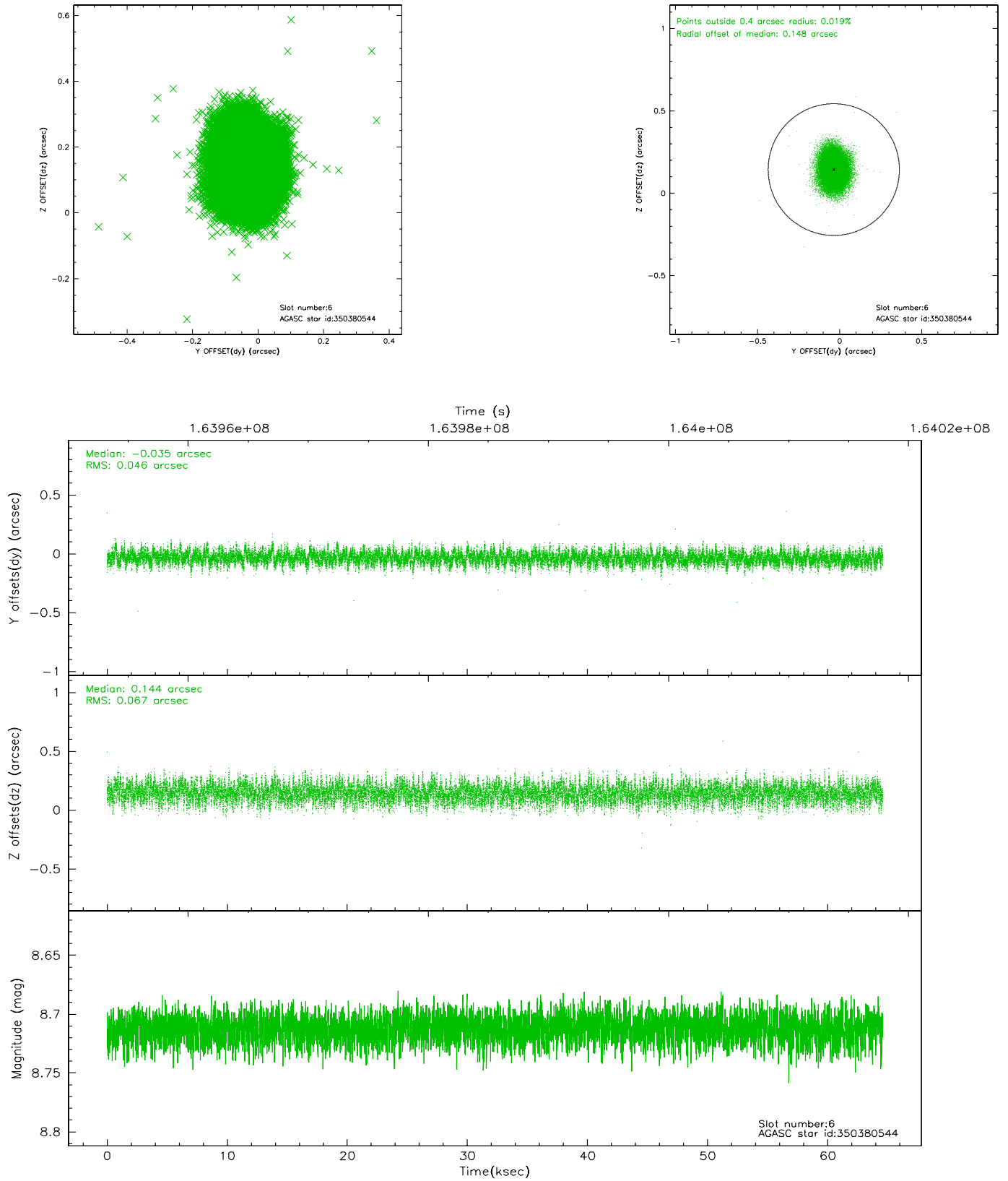
## 2.4.2 Slot 4



### 2.4.3 Slot 5

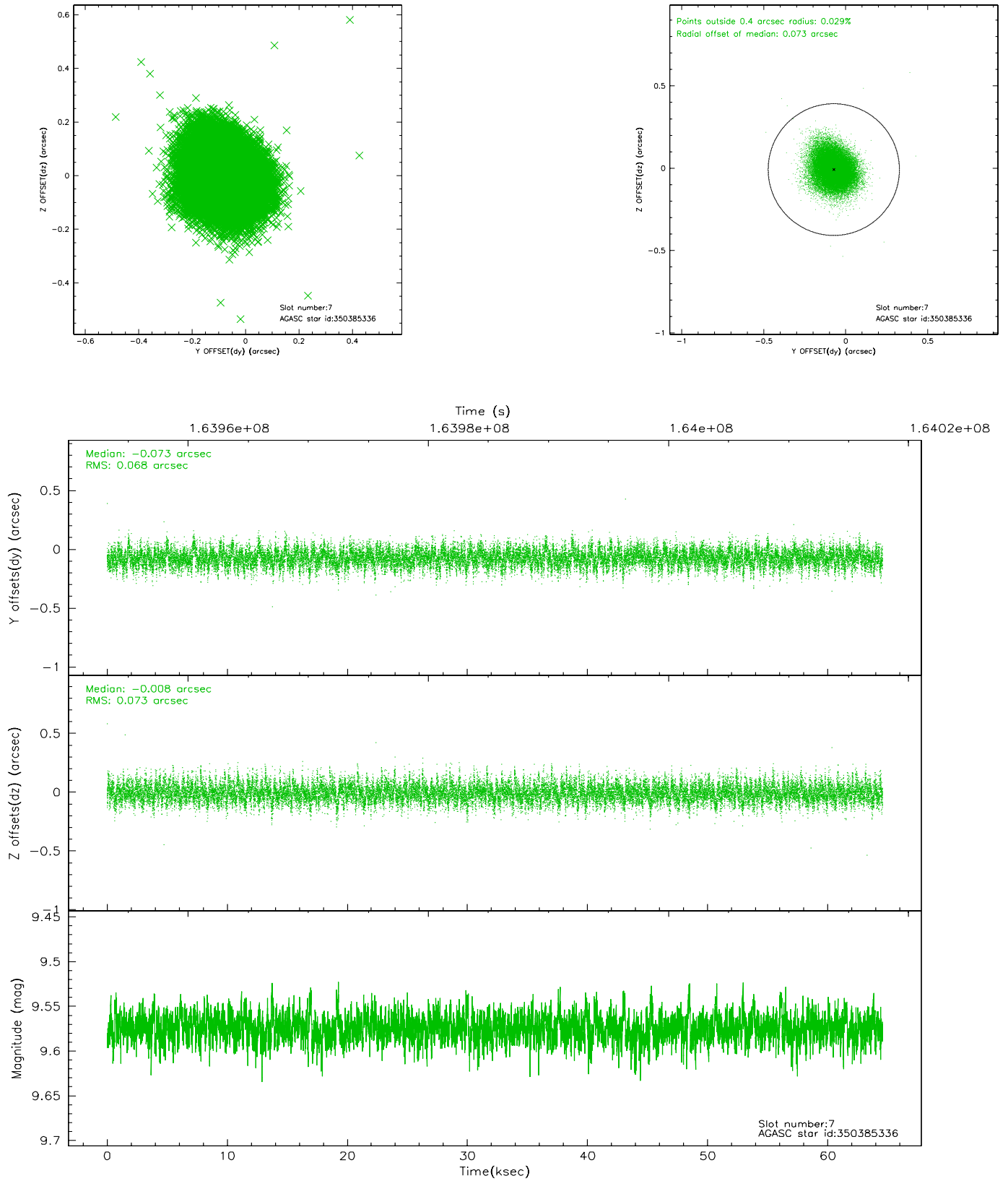


## 2.4.4 Slot 6



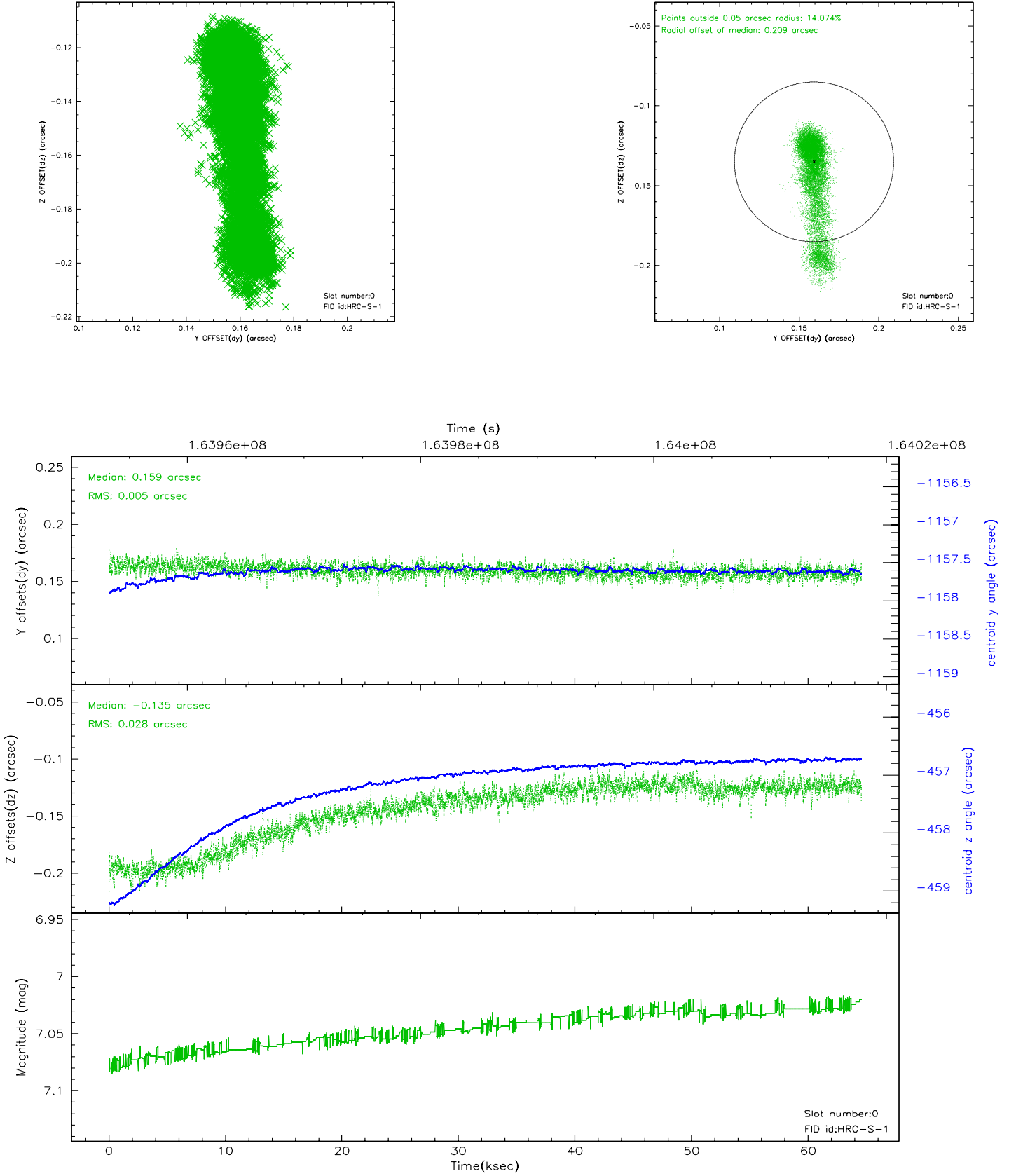


## 2.4.5 Slot 7

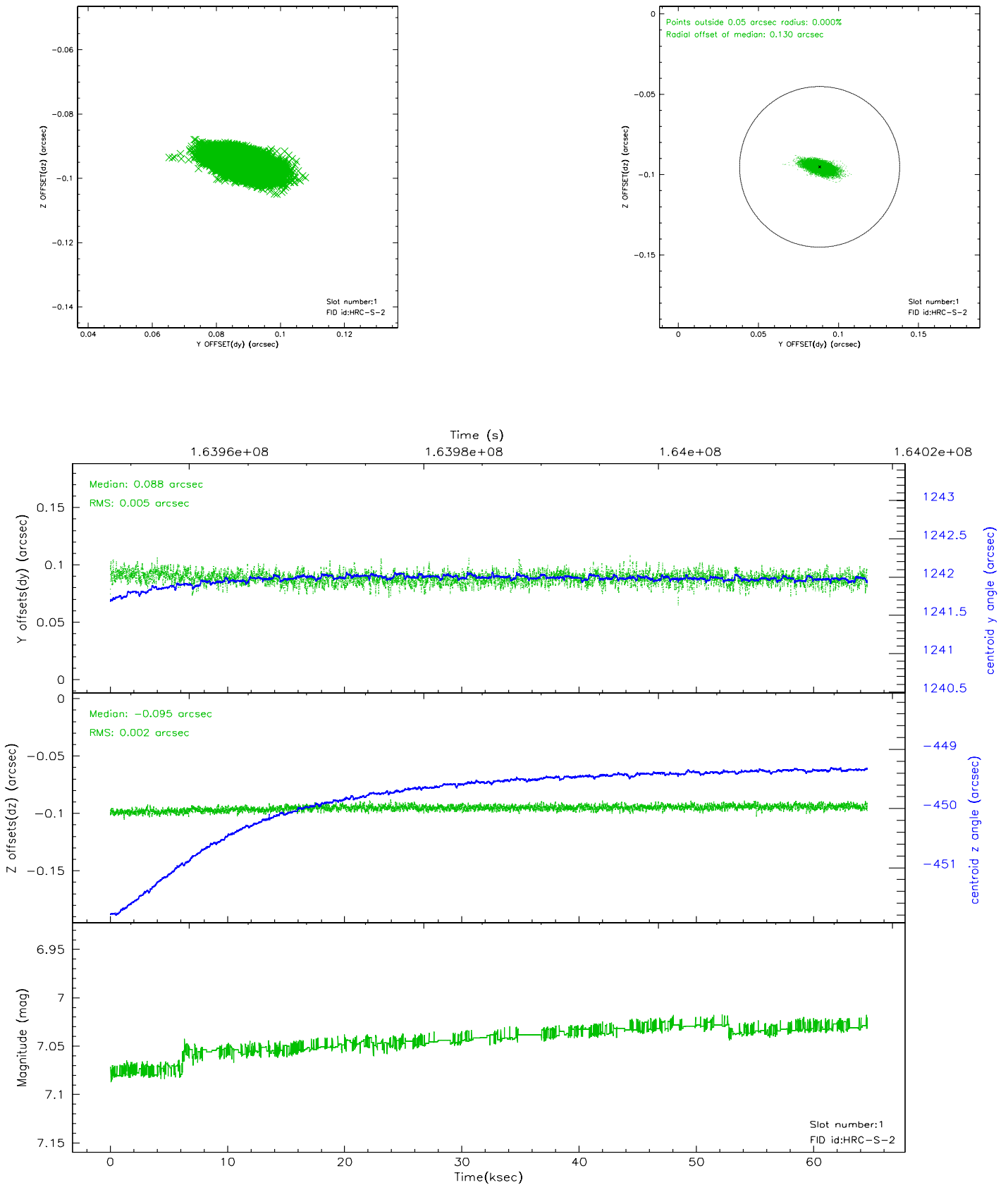


## 2.5 FID Slots

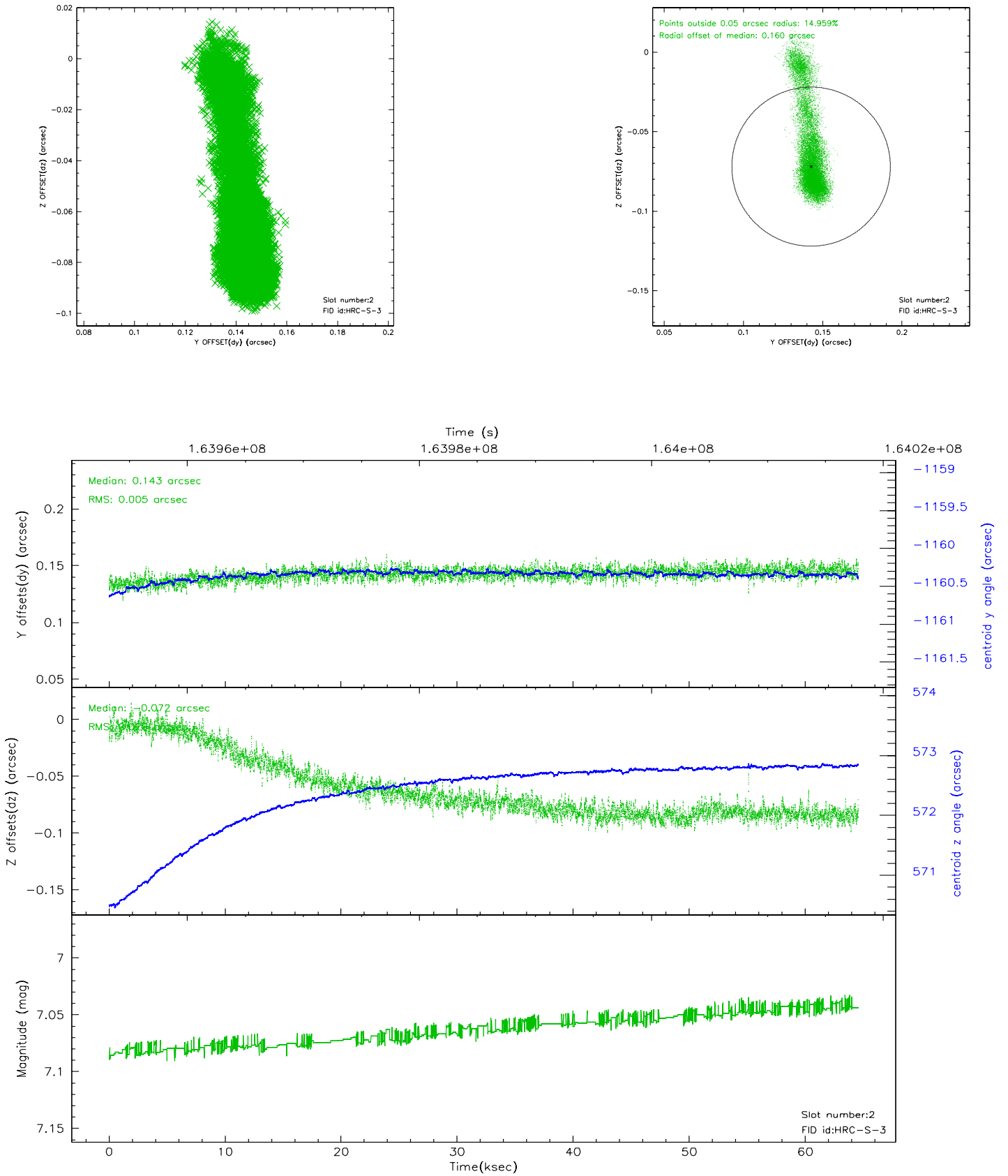
### 2.5.1 Slot 0



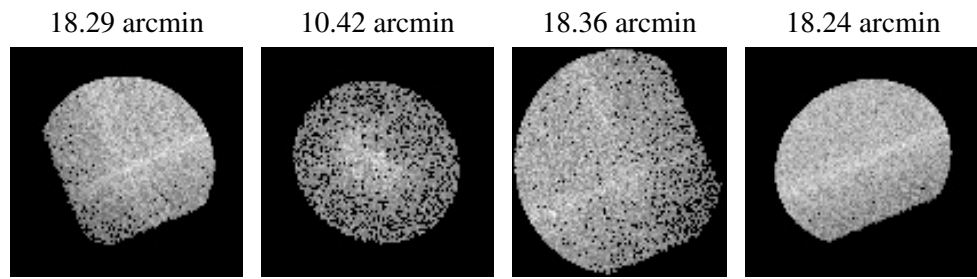
## 2.5.2 Slot 1



### 2.5.3 Slot 2



### 3 Point Sources



## A Summary

### A.1 Status

V&V Scientist	Beth Sundheim
V&V Date (YYYY-MM-DD)	2006.07.25
V&V Edition	1
V&V Disposition and Status	OK
V&V Charge Time	64.313

### A.2 Comments