

# V&V Reference Report

## L2 ASCDS Version : 7.6.9

Observation 3318 - L2 Version 001  
Chandra X-Ray Center

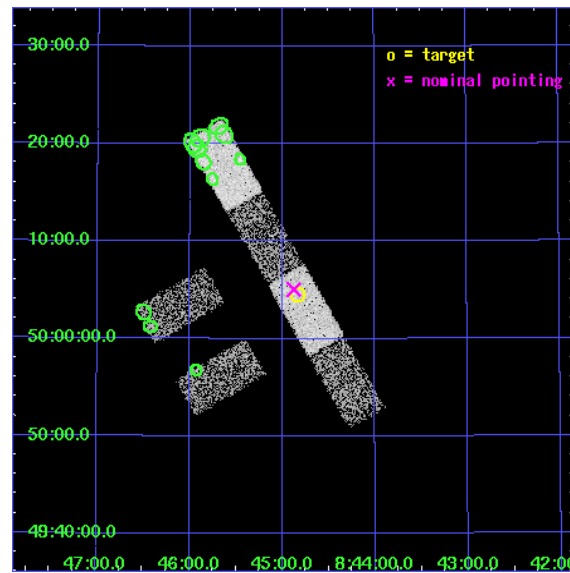
L2 Processing Date : Oct 4 2006

## Contents

<b>1</b>	<b>Front</b>	<b>2</b>
<b>2</b>	<b>OBI</b>	<b>3</b>
2.1	OBI . . . . .	3
2.1.1	Images . . . . .	3
2.1.2	Bias . . . . .	3
2.1.3	Parameters . . . . .	4
2.1.4	Events . . . . .	4
2.2	Compared Parameters . . . . .	5
2.3	Aspect . . . . .	6
2.4	Star Slots . . . . .	9
2.4.1	Slot 3 . . . . .	9
2.4.2	Slot 4 . . . . .	10
2.4.3	Slot 5 . . . . .	11
2.4.4	Slot 6 . . . . .	12
2.4.5	Slot 7 . . . . .	13
2.5	FID Slots . . . . .	14
2.5.1	Slot 0 . . . . .	14
2.5.2	Slot 1 . . . . .	15
2.5.3	Slot 2 . . . . .	16
<b>3</b>	<b>Point Sources</b>	<b>17</b>
<b>A</b>	<b>Summary</b>	<b>18</b>
A.1	Status . . . . .	18
A.2	Comments . . . . .	18

# 1 Front

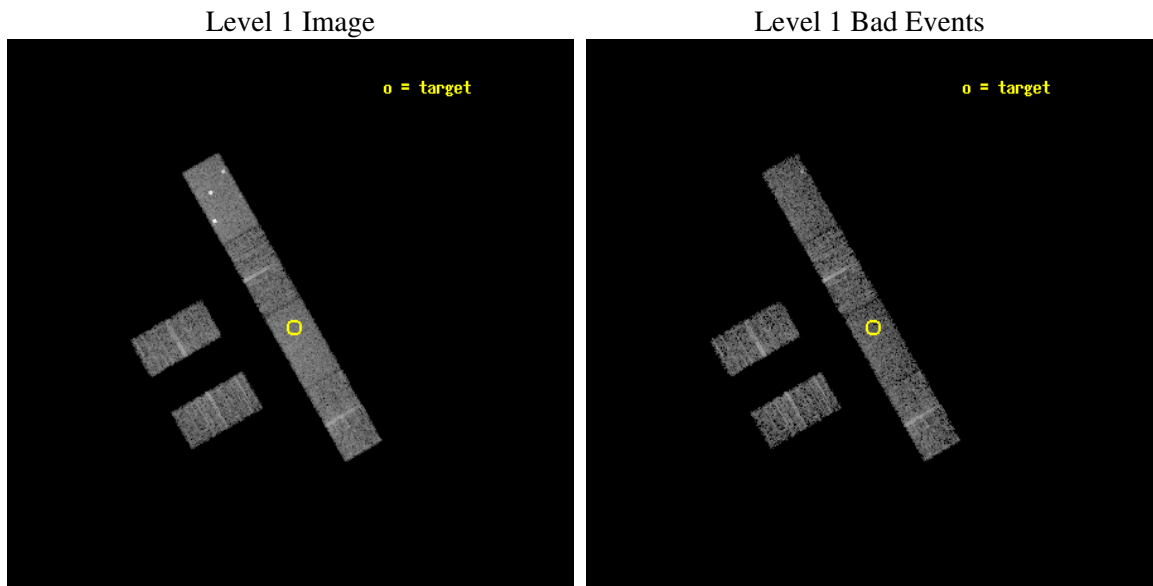
seq_num	900157
obs_id	3318
title	THE SHEEP SURVEY: WHAT KIND OF OBJECTS MAKE THE X-RAY BACKGROUND?
observer	Professor Kirpal Nandra
object	AX J0844.8+5004
dtcycle	0
cycle	P
ra_targ	131.20875
dec_targ	50.076944
ra_nom	131.21846118942
dec_nom	50.084426122672
roll_nom	60.078683525282
revision	2
ontime	5142.6000340581
livetime	5027.962489302
ontime2	5142.6000340581
ontime3	5142.6000340581
ontime5	5142.6000340581
ontime6	5142.6000340581
ontime7	5142.6000340581
ontime8	5142.6000340581
l2events	25503



## 2 OBI

### 2.1 OBI

#### 2.1.1 Images



#### 2.1.2 Bias

Chip 2

Chip 3

Chip 5



Chip 6

Chip 7

Chip 8



### 2.1.3 Parameters

obi_num	0
ascdsver	7.6.9
caldsver	3.2.3
date	2006-10-04T13:56:32
revision	2

sched_exp_time	5000.000000
ontime	5685.062695235
ontime2	5685.062695235
ontime3	5686.9037153423
ontime5	5686.9037153423
ontime6	5686.9037153423
ontime7	5685.062695235
ontime8	5686.9037153423
l1events	140130

### 2.1.4 Events

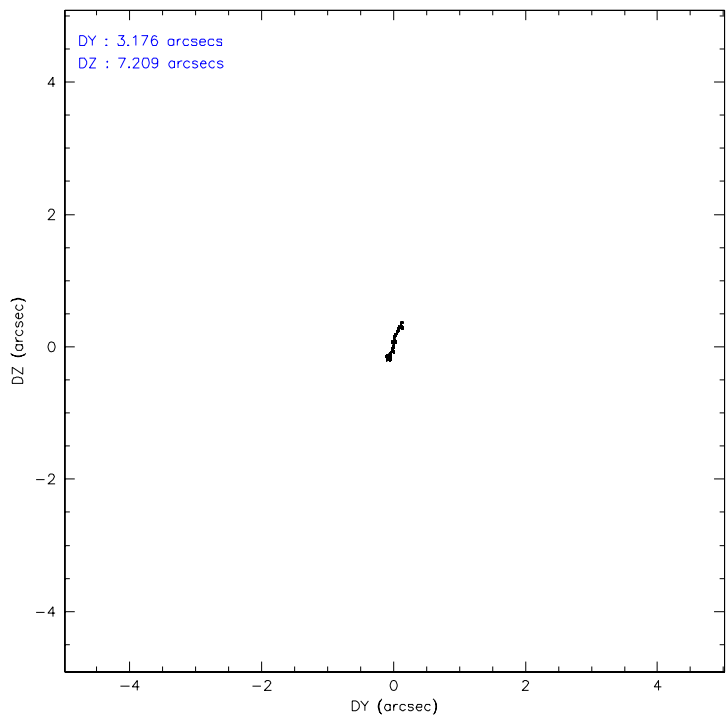
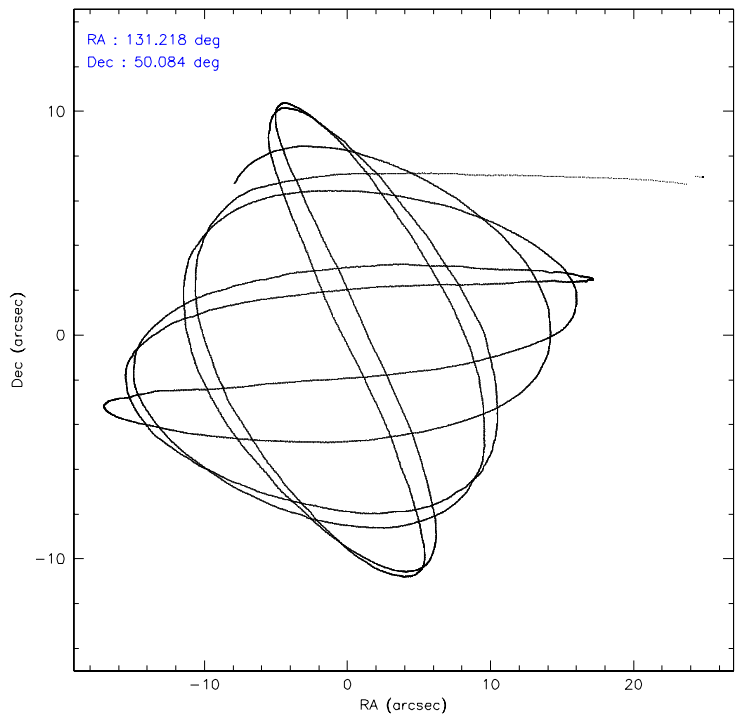
	ccd 2	ccd 3	ccd 5	ccd 6	ccd 7	ccd 8
level 1 events	20507	19140	31676	20633	24437	23737
rejected events	18507	17157	16594	18582	15799	19689
rejected %	90%	89%	52%	90%	64%	82%

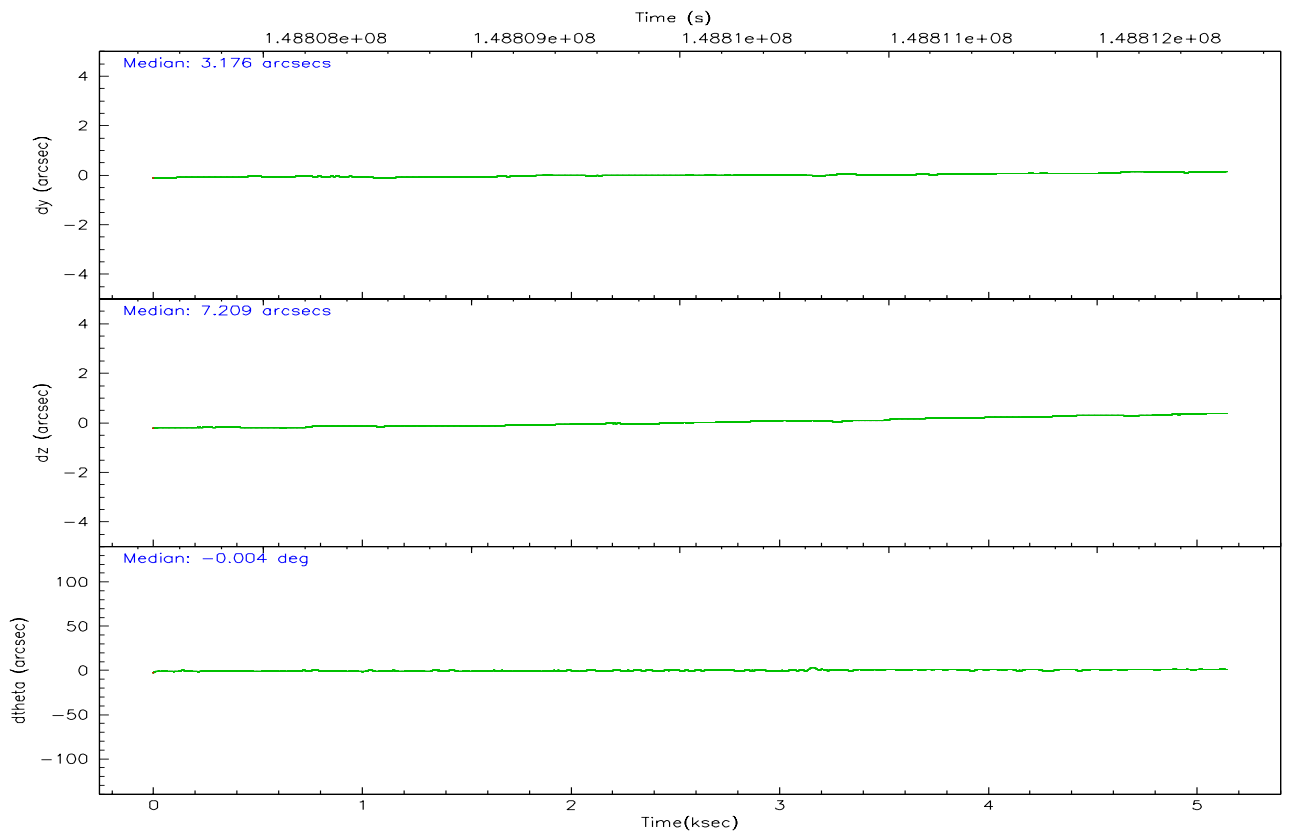
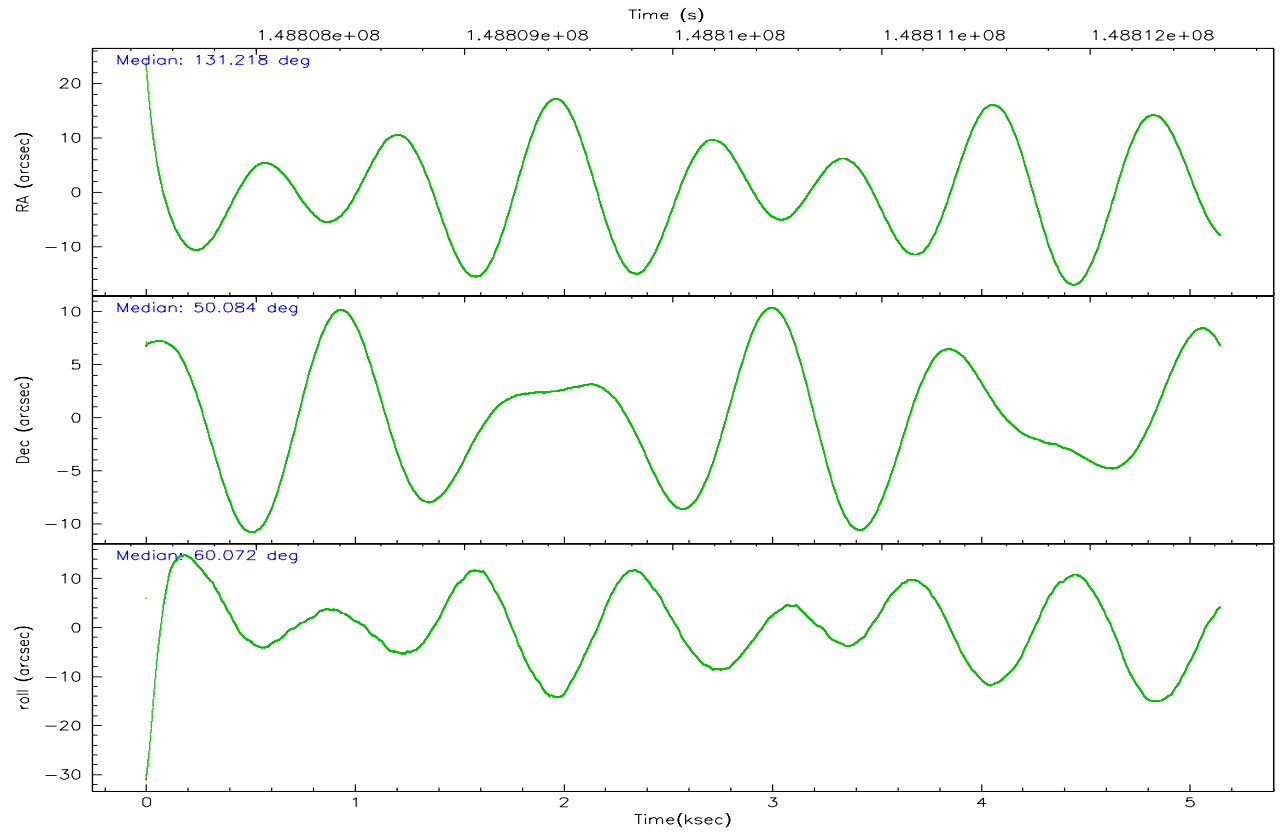
	ccd 2	ccd 3	ccd 5	ccd 6	ccd 7	ccd 8
grade 0 events	887	888	5657	866	630	1444
	4%	4%	17%	4%	2%	6%
grade 1 events	5	7	217	4	15	15
	0%	0%	0%	0%	0%	0%
grade 2 events	434	383	3780	450	2342	1001
	2%	2%	11%	2%	9%	4%
grade 3 events	264	298	314	277	613	543
	1%	1%	0%	1%	2%	2%
grade 4 events	263	244	293	231	614	484
	1%	1%	0%	1%	2%	2%
grade 5 events	708	724	1346	829	1719	1057
	3%	3%	4%	4%	7%	4%
grade 6 events	367	370	6679	441	5347	1164
	1%	1%	21%	2%	21%	4%
grade 7 events	17579	16226	13390	17535	13157	18029
	85%	84%	42%	84%	53%	75%

## 2.2 Compared Parameters

Parameter	Planned	Actual	Parameter	Planned	Actual
Instrument	ACIS	ACIS	Obspar format version number	6	6
Detector	ACIS-235678	ACIS-235678	Obspar file type	PREDICTED	ACTUAL
Grating	NONE	NONE	Obspar update status	NONE	UPDATED
Data mode	FAINT	FAINT	Number of optional ACIS chips dropped	0	0
Observation mode	POINTING	POINTING	On-chip summing requested	N	N
Pointing RA	131.219071	131.2184611894218	Subarray requested	1/2	1/2
Pointing Dec	50.057127	50.08442612267245	Subarray start row	0	257
Pointing Roll	59.921628	60.07868352528234	Subarray row count	1024	512
SIM focus pos (mm)	-0.684267	-0.6828225247311905	Alternating exposures requested	N	N
SIM defocus (mm)	0	0.001444936568705701	Primary exposure time	0.000000	1.8
SIM translation stage pos (mm)	-190.132523	-190.1400660498719			
SIM translation stage offset (mm)	0	0.00754346686406393			
Observation start time	148807616.184000	148806515.50715			
Observation start date	2002-09-19T07:25:52	2002-09-19T07:08:35			
Observation end time	148812616.184000	148814444.90748			
Observation end date	2002-09-19T08:49:12	2002-09-19T09:20:44			
Read mode	TIMED	TIMED			

### 2.3 Aspect





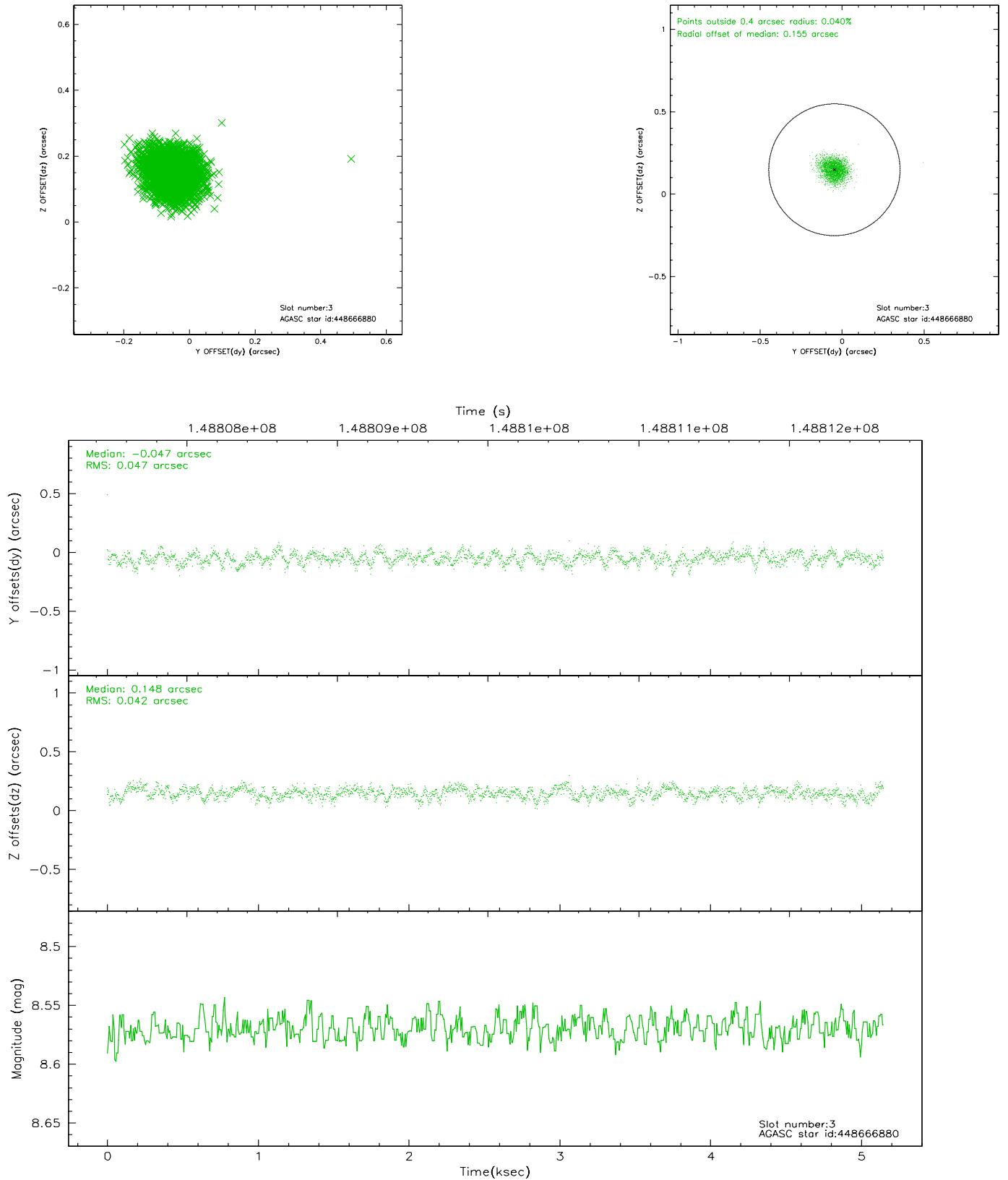
### Slot Statistics

slot	status	id	mag	n_pts	med_dy	med_dz	dr1	dr2	ra	dec	mean_y	mean_z
0	FID	ACIS-S-2	7.11	1256	-0.003	0.024	0.008	0.014	0.000000	0.000000	-755.83	-1728.39
1	FID	ACIS-S-4	7.20	1256	-0.044	-0.005	0.005	0.009	0.000000	0.000000	2156.88	178.85
2	FID	ACIS-S-5	7.24	1256	0.016	-0.010	0.008	0.014	0.000000	0.000000	-1807.13	173.86
3	GUIDE	448666880	8.57	2512	-0.047	0.148	0.066	0.106	131.999230	50.277375	1595.11	-1150.77
4	GUIDE	448136280	8.65	2511	0.118	-0.063	0.066	0.107	130.767172	49.987423	-736.99	780.25
5	GUIDE	448537656	9.01	2509	-0.033	-0.333	0.092	0.143	130.570587	50.654135	1124.30	2361.31
6	GUIDE	448674328	9.09	2511	0.099	0.083	0.075	0.121	131.586128	50.022930	322.58	-794.22
7	GUIDE	448662016	9.52	2511	-0.130	0.161	0.084	0.138	132.296295	50.214204	1750.03	-1854.94

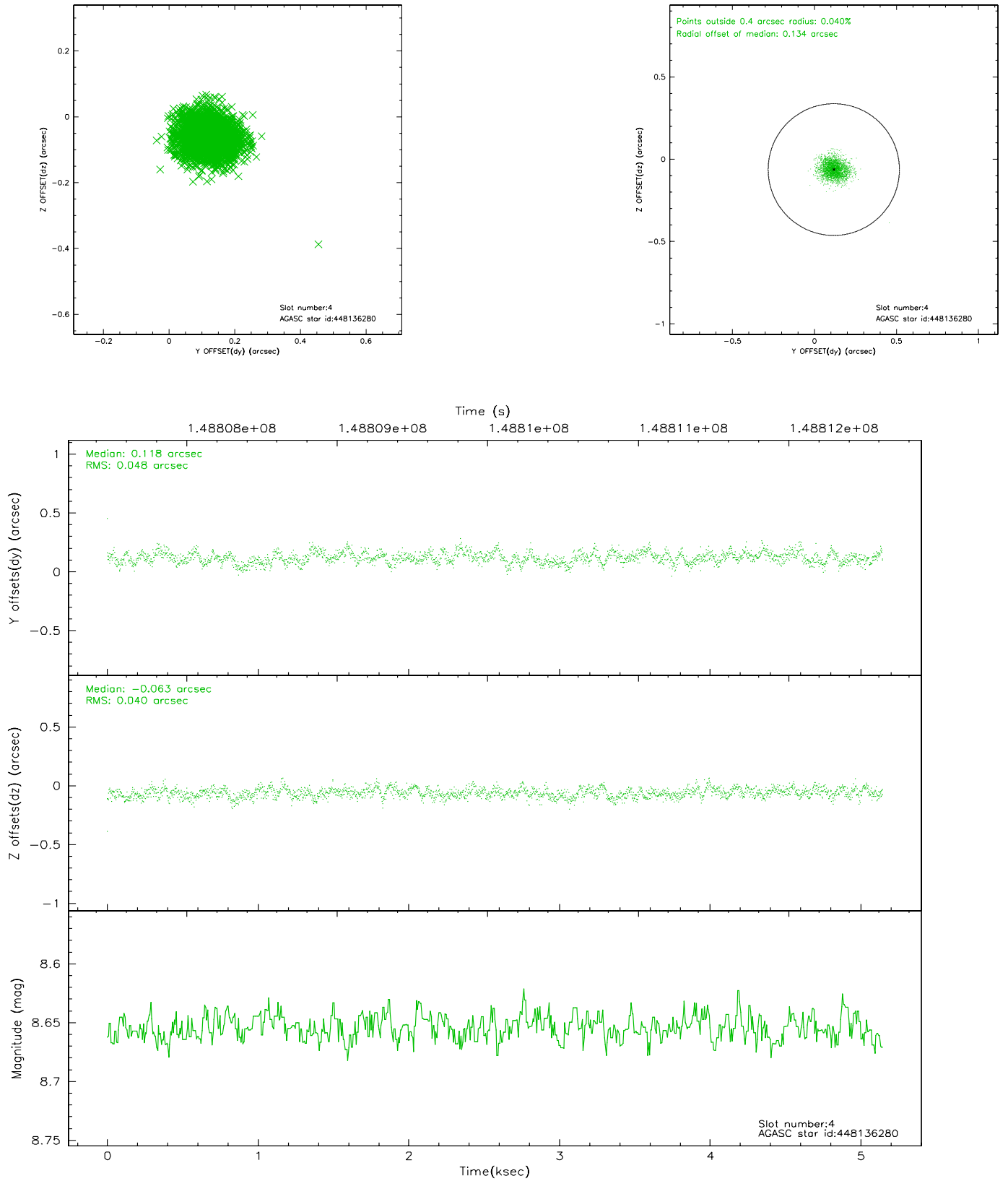


## 2.4 Star Slots

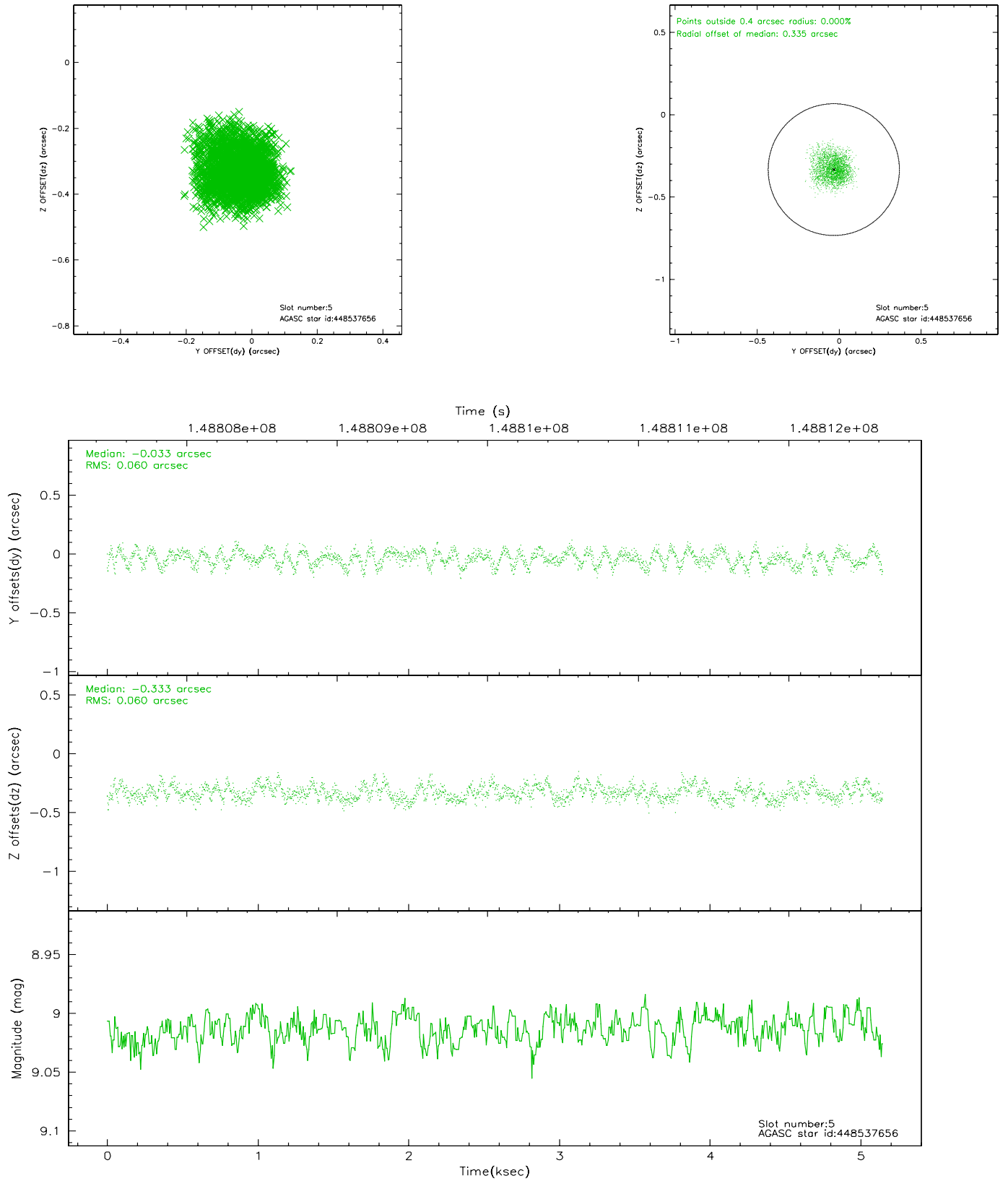
### 2.4.1 Slot 3



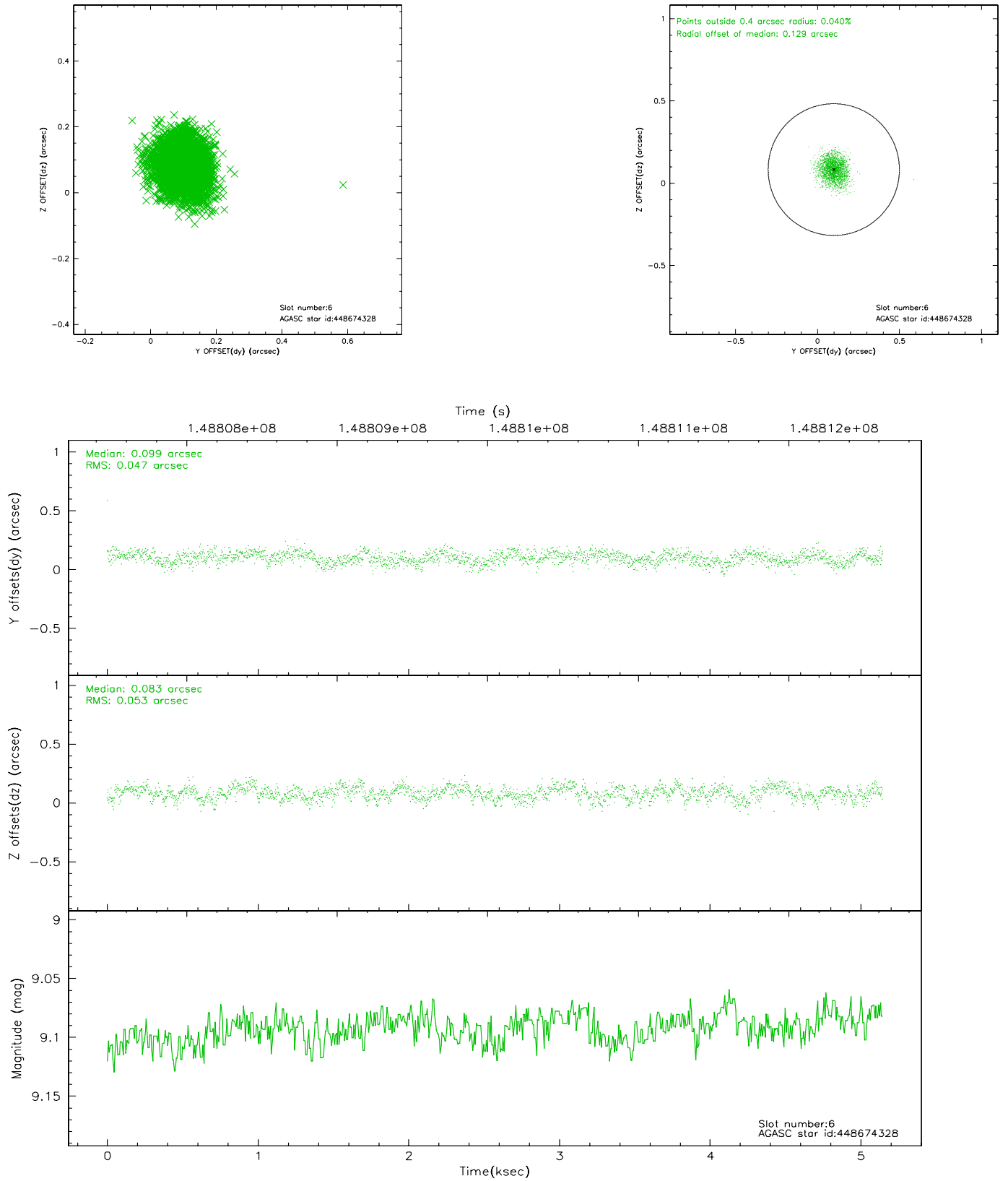
## 2.4.2 Slot 4



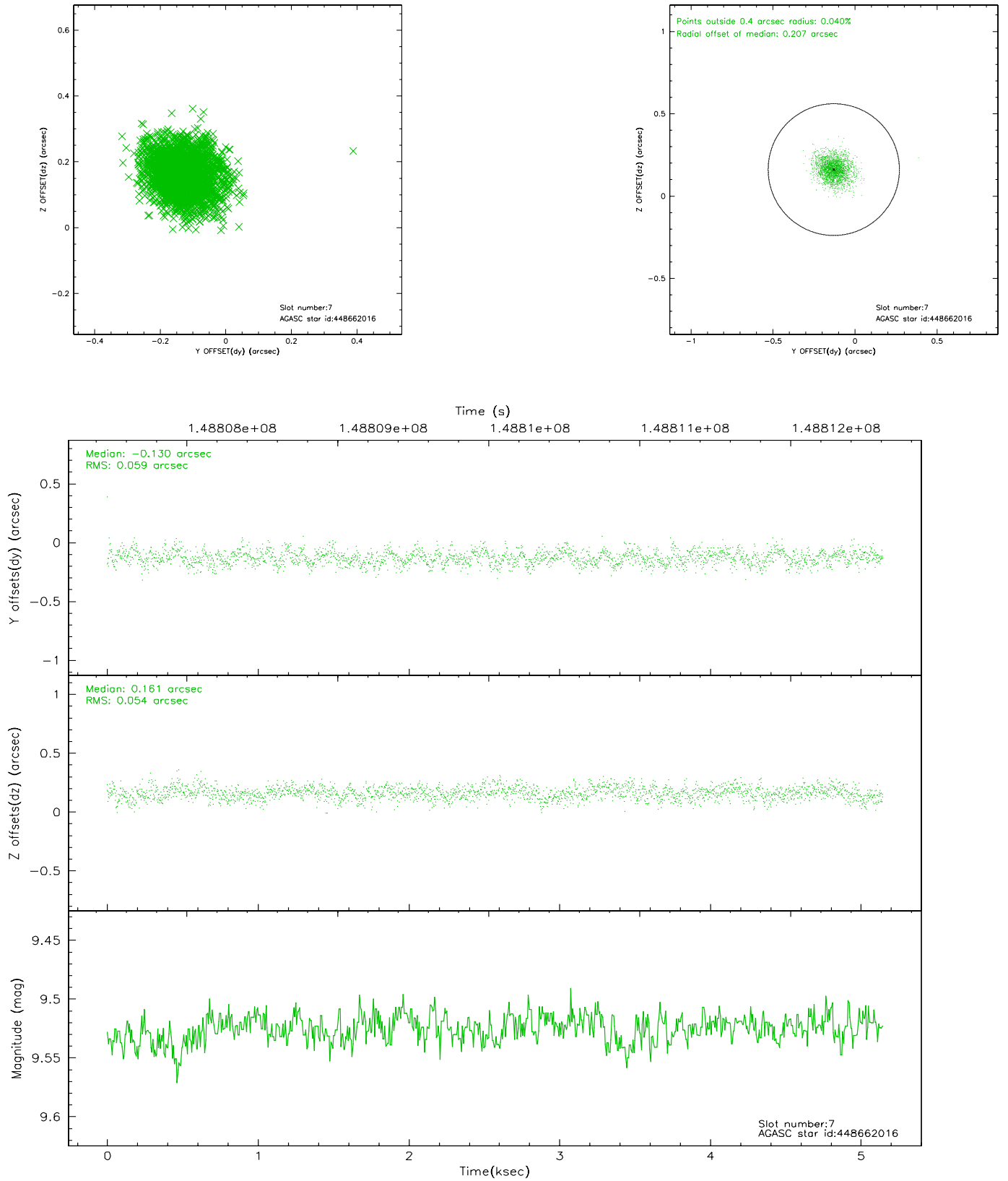
### 2.4.3 Slot 5



## 2.4.4 Slot 6

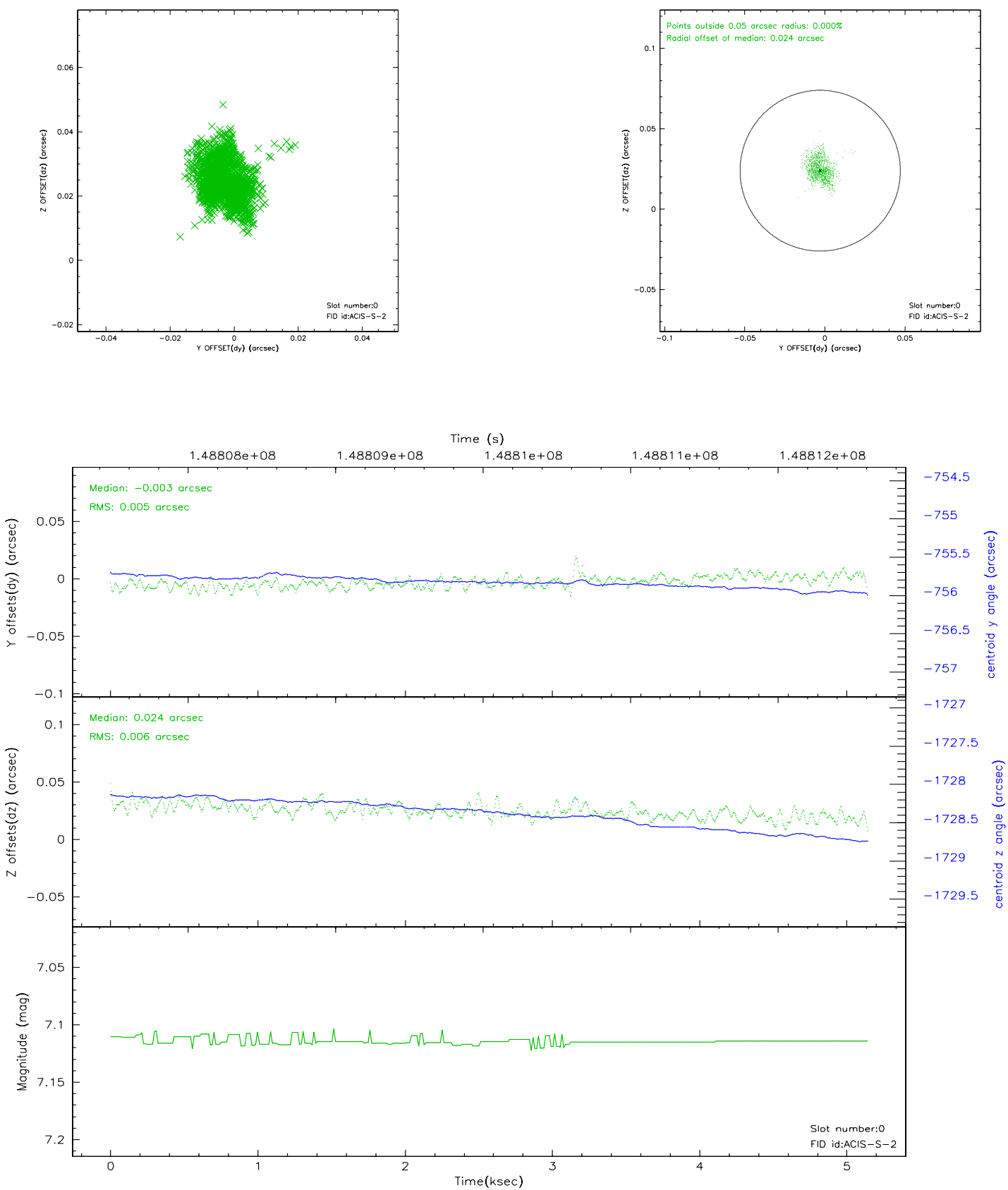


## 2.4.5 Slot 7

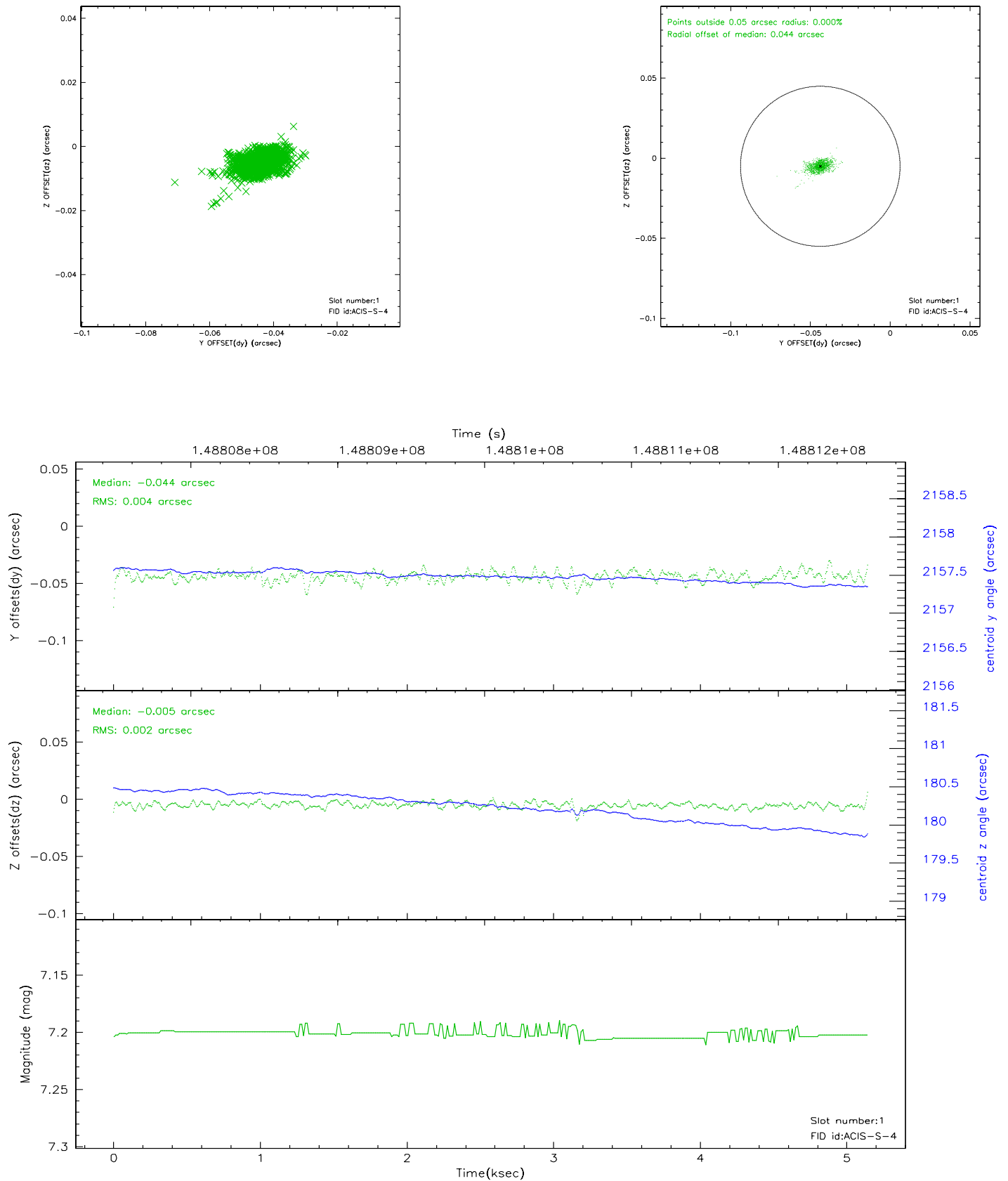


## 2.5 FID Slots

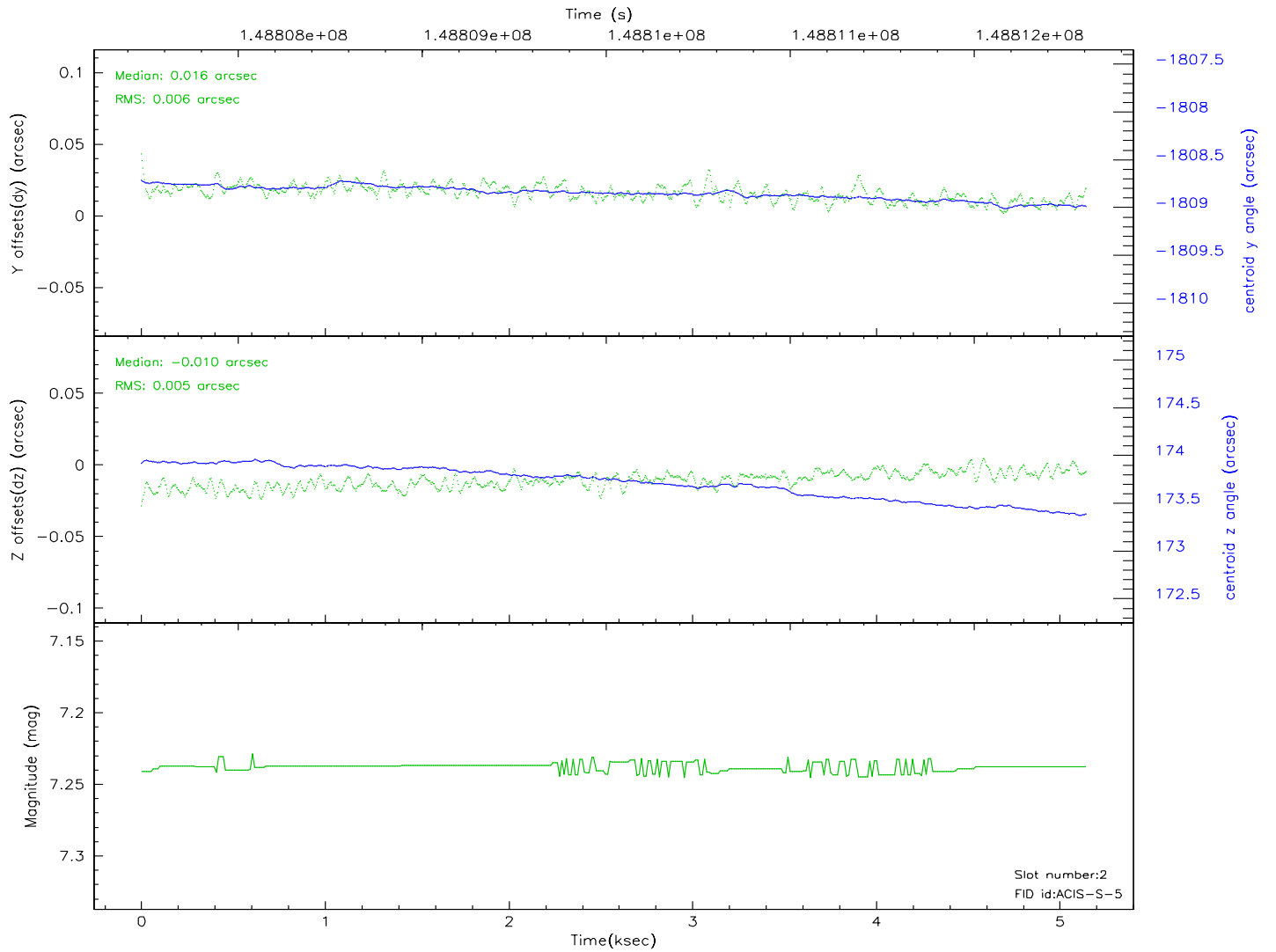
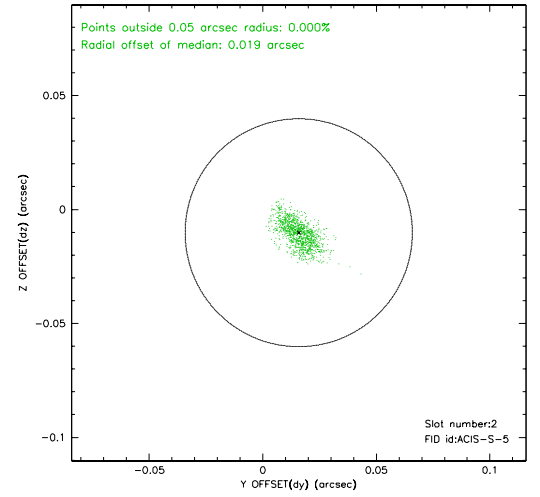
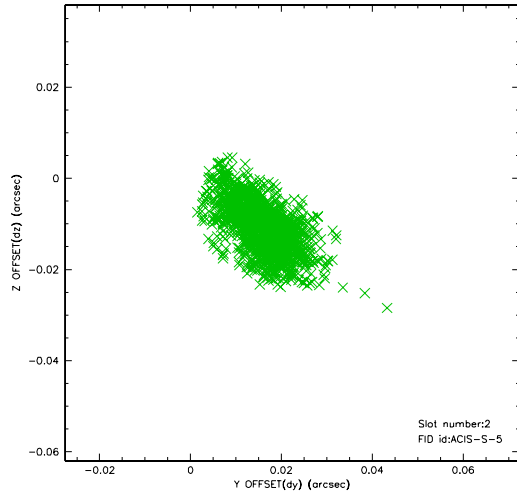
### 2.5.1 Slot 0



## 2.5.2 Slot 1

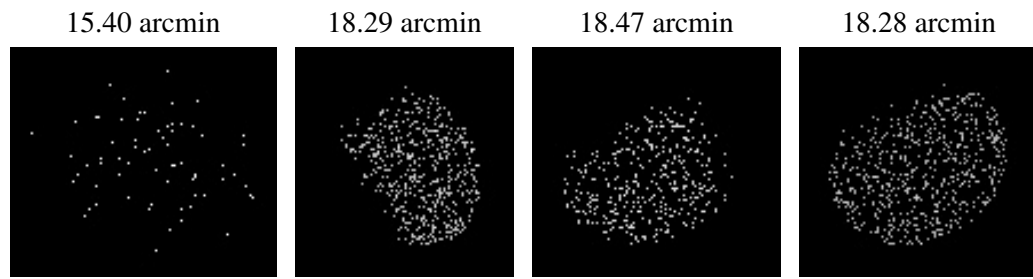


### 2.5.3 Slot 2





### 3 Point Sources



## A Summary

### A.1 Status

V&V Scientist	Jen Lauer
V&V Date (YYYY-MM-DD)	2006.10.04
V&V Edition	1
V&V Disposition and Status	OK
V&V Charge Time	5.142

### A.2 Comments