

V&V Reference Report

L2 ASCDS Version : 8.4.5

Observation 3128 - L2 Version 3
Chandra X-Ray Center

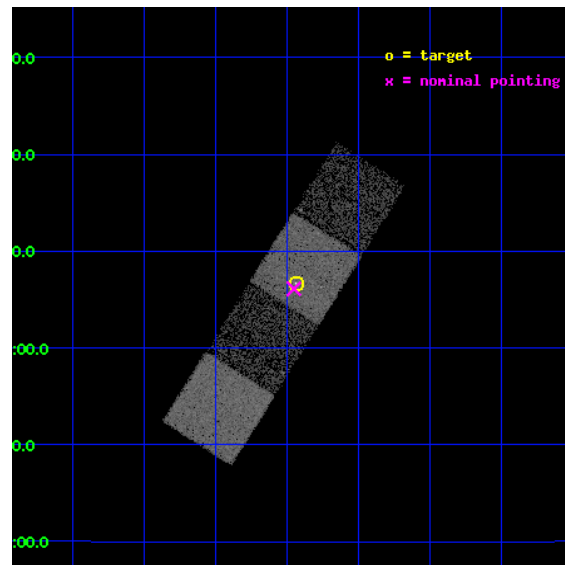
L2 Processing Date : Sep 29 2012

Contents

1	Front	2
2	OBI	3
2.1	OBI	3
2.1.1	Images	3
2.1.2	Bias	3
2.1.3	Parameters	4
2.1.4	Events	4
2.2	Compared Parameters	5
2.3	Aspect	6
2.4	Star Slots	9
2.4.1	Slot 3	9
2.4.2	Slot 4	10
2.4.3	Slot 5	11
2.4.4	Slot 6	12
2.4.5	Slot 7	13
2.5	FID Slots	14
2.5.1	Slot 0	14
2.5.2	Slot 1	15
2.5.3	Slot 2	16
A	Summary	17
A.1	Status	17
A.2	Comments	17

1 Front

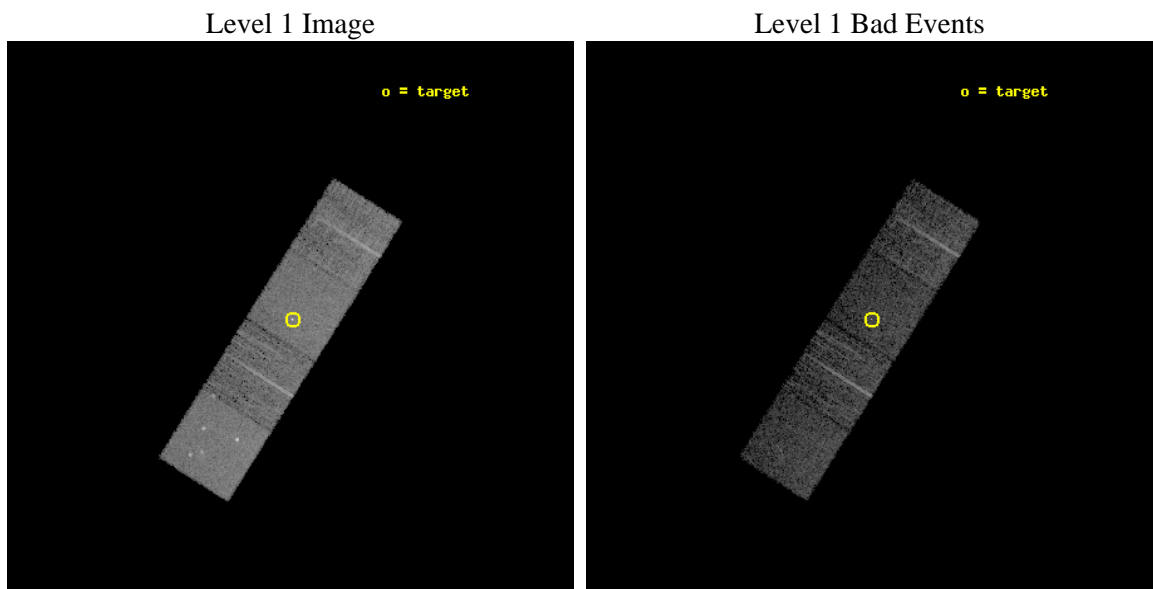
seq_num	700567	Sequence number
obs_id	3128	Observation id
title	3C 346, 3C 78, AND THE X-RAY EMISSION MECHANISM FROM OPTICAL JETS	
observer	Prof Mark Birkinshaw	Principal investigator
object	3C78	Source name
dtcycle	0	
cycle	P	events from which exps? Prim/Second/Both
ra_targ	47.109167	Observer's specified target RA [deg]
dec_targ	4.110917	Observer's specified target Dec [deg]
ra_nom	47.112868634805	Nominal RA [deg]
dec_nom	4.1018255657166	Nominal Dec [deg]
roll_nom	302.19694318163	Nominal Roll [deg]
revision	3	Processing version of data
ontime	5232.4677889943	Sum of GTIs [s]
livetime	5164.1017452444	Livetime [s]
ontime5	5232.426748991	Sum of GTIs [s]
ontime6	5229.2447287291	Sum of GTIs [s]
ontime7	5232.4677889943	Sum of GTIs [s]
ontime8	5232.3446689993	Sum of GTIs [s]
l2events	48406	Number of level 2 events



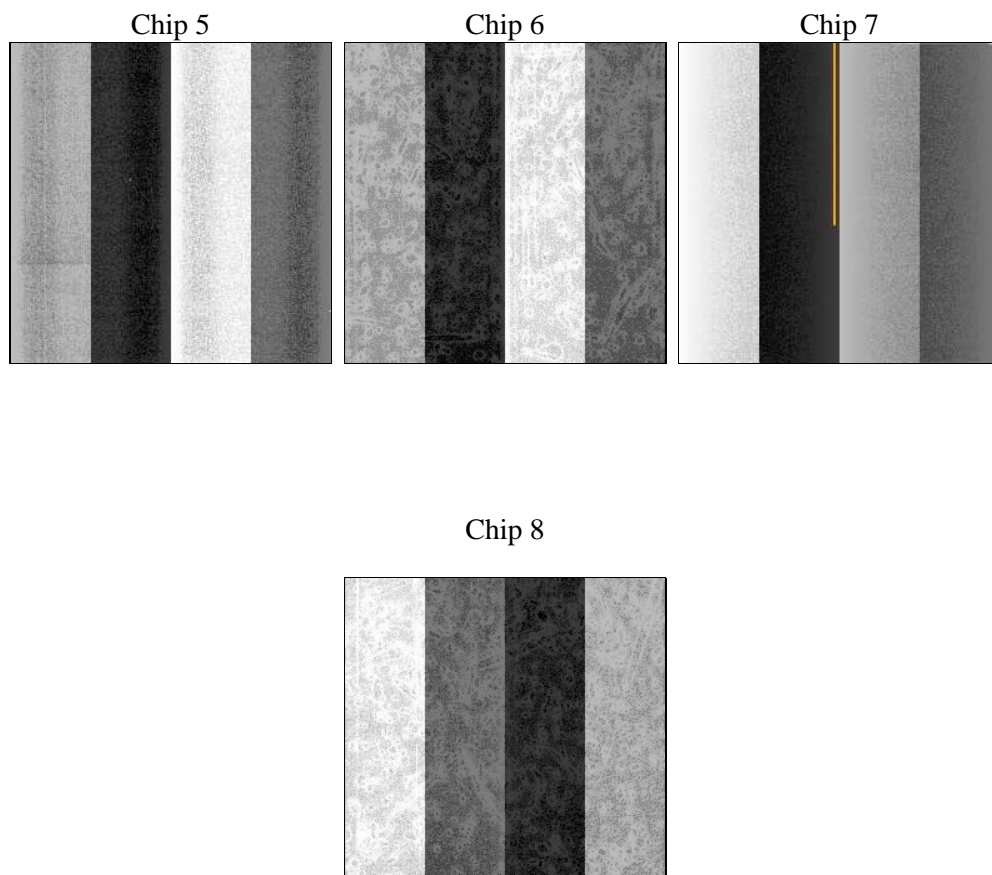
2 OBI

2.1 OBI

2.1.1 Images



2.1.2 Bias



2.1.3 Parameters

obi_num	0	Obi number	sched_exp_time	5000.000000	[s] Scheduled observation exposure time
ascdsver	8.4.5	Processing system revision	ontime	5232.4677889943	Sum of GTIs [s]
caldsver	4.5.2	 	ontime5	5232.426748991	Sum of GTIs [s]
date	2012-09-29T02:18:30	Date and time of file creation	ontime6	5229.2447287291	Sum of GTIs [s]
revision	3	Processing version of data	ontime7	5232.4677889943	Sum of GTIs [s]
			ontime8	5232.3446689993	Sum of GTIs [s]
			l1events	178127	Number of level 1 events

2.1.4 Events

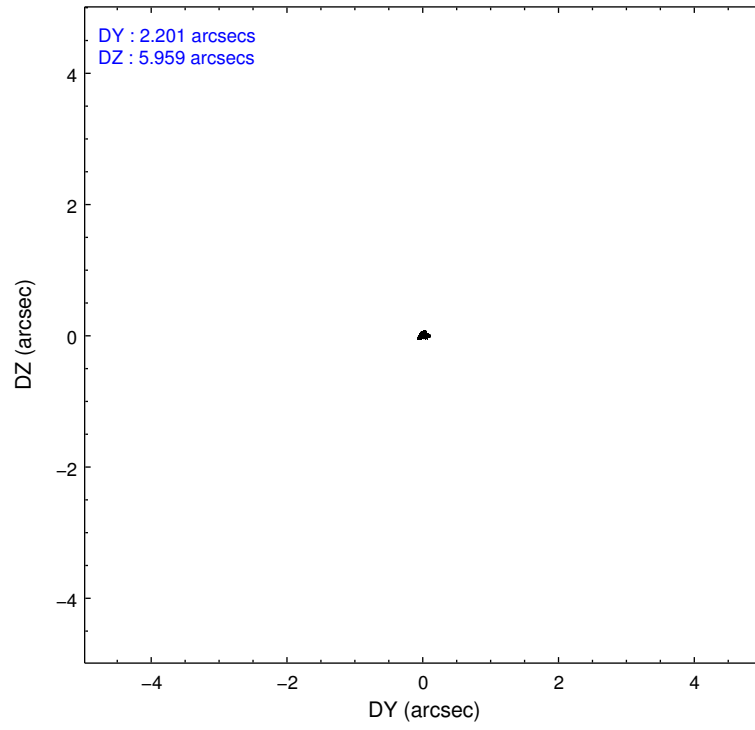
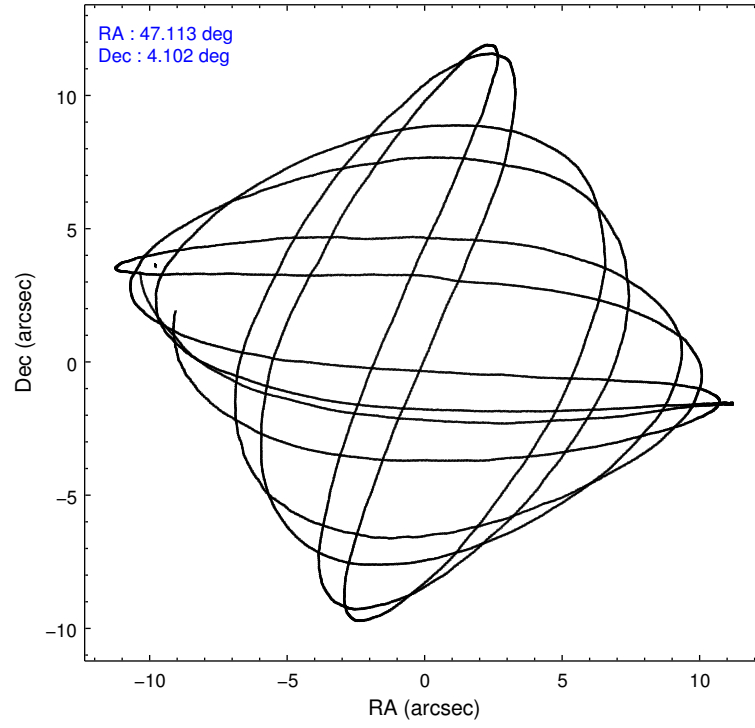
	ccd 5	ccd 6	ccd 7	ccd 8
level 1 events	51338	35967	47133	43689
rejected events	27258	31937	26934	35069
rejected %	53%	88%	57%	80%

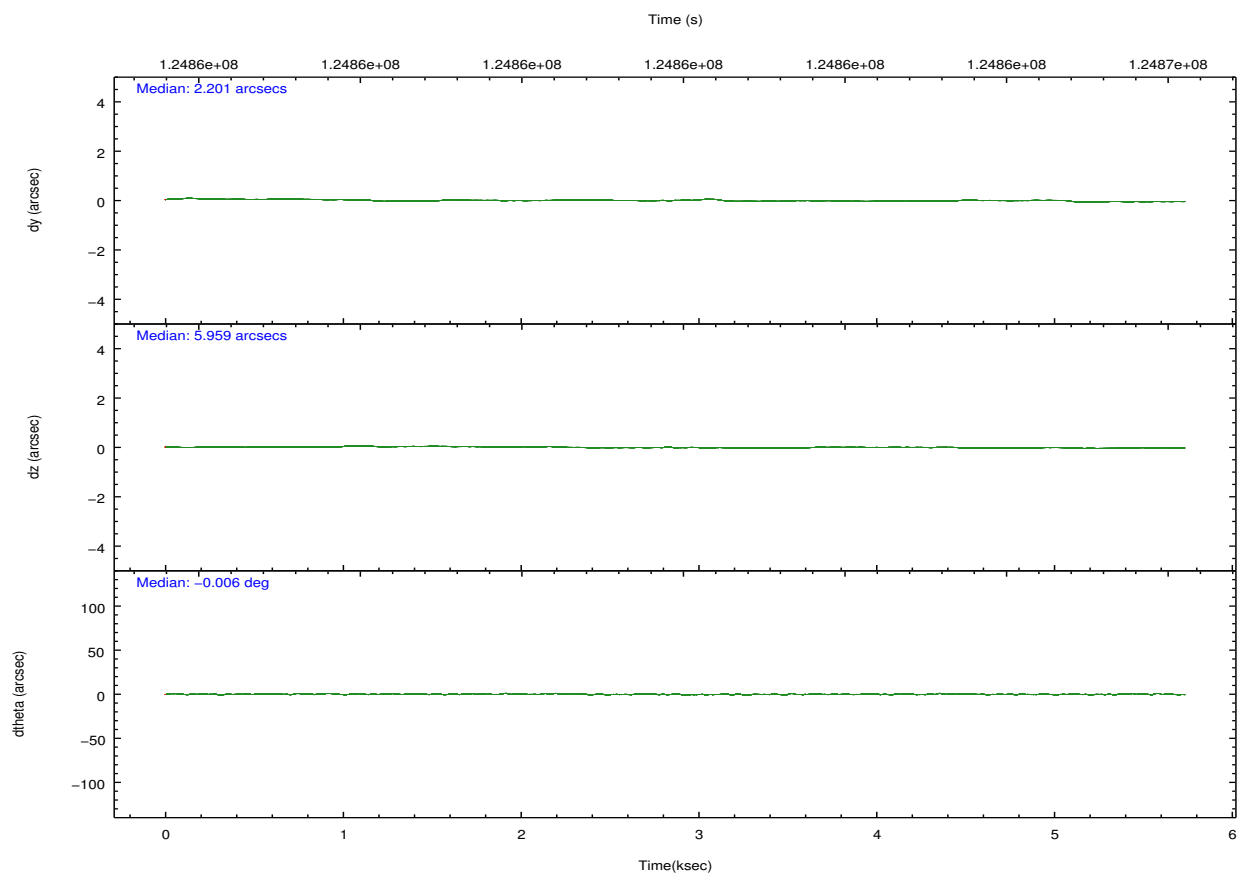
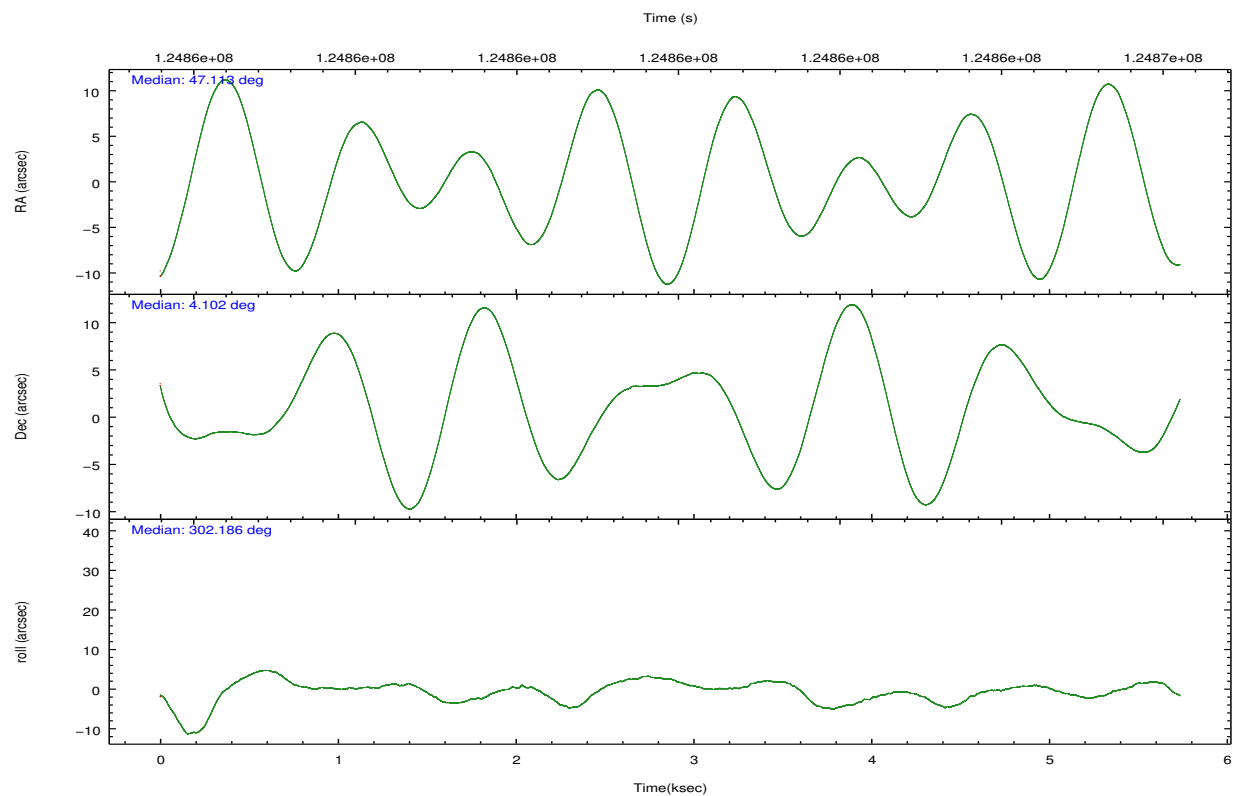
	ccd 5	ccd 6	ccd 7	ccd 8
grade 0 events	3624	1631	2126	2728
	7%	4%	4%	6%
grade 1 events	97	14	66	25
	0%	0%	0%	0%
grade 2 events	6667	822	4069	1882
	12%	2%	8%	4%
grade 3 events	951	398	1874	904
	1%	1%	3%	2%
grade 4 events	905	397	1874	860
	1%	1%	3%	1%
grade 5 events	3752	1509	4499	1810
	7%	4%	9%	4%
grade 6 events	11947	784	10268	2249
	23%	2%	21%	5%
grade 7 events	23395	30412	22357	33231
	45%	84%	47%	76%

2.2 Compared Parameters

Parameter	Planned	Actual	Parameter	Planned	Actual
Instrument	ACIS	ACIS	Obspar format version number	7	7
Detector	ACIS-5678	ACIS-5678	Obspar file type	PREDICTED	ACTUAL
Grating	NONE	NONE	Obspar update status	NONE	UPDATED
Data mode	FAINT	FAINT	Number of optional ACIS chips dropped	0	0
Observation mode	POINTING	POINTING	On-chip summing requested	N	N
[deg] Pointing RA	47.088488	47.11286863480505	Subarray requested	NONE	NONE
[deg] Pointing Dec	4.114332	4.101825565716584	Alternating exposures requested	N	N
[deg] Pointing Roll	302.042046	302.1969431816322	[s] Primary exposure time	0.000000	3.1
[mm] SIM focus pos	-0.684267	-0.6828225247311905			
[mm] SIM defocus	0	0.001444936568705701			
[mm] SIM translation stage pos	-190.132523	-190.1425803651734			
[mm] SIM translation stage offset	0	0.01005778216563158			
[s] Observation start time (MET)	124860813.184000	124859580.98187			
Observation start date	2001-12-16T03:32:29	2001-12-16T03:13:00			
[s] Observation end time (MET)	124865813.184000	124866659.11965			
Observation end date	2001-12-16T04:55:49	2001-12-16T05:10:59			
Read mode	TIMED	TIMED			

2.3 Aspect



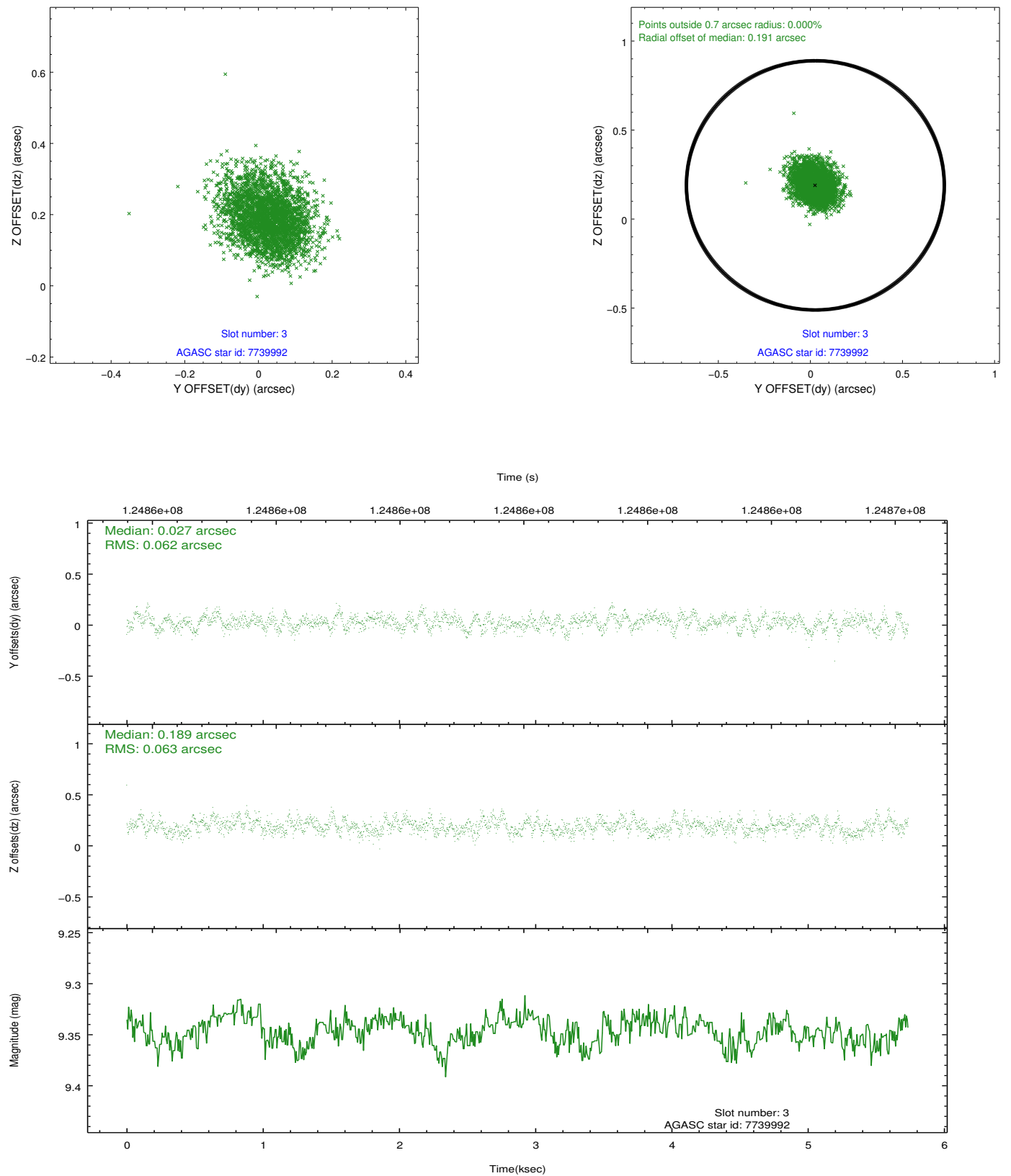


Slot Statistics

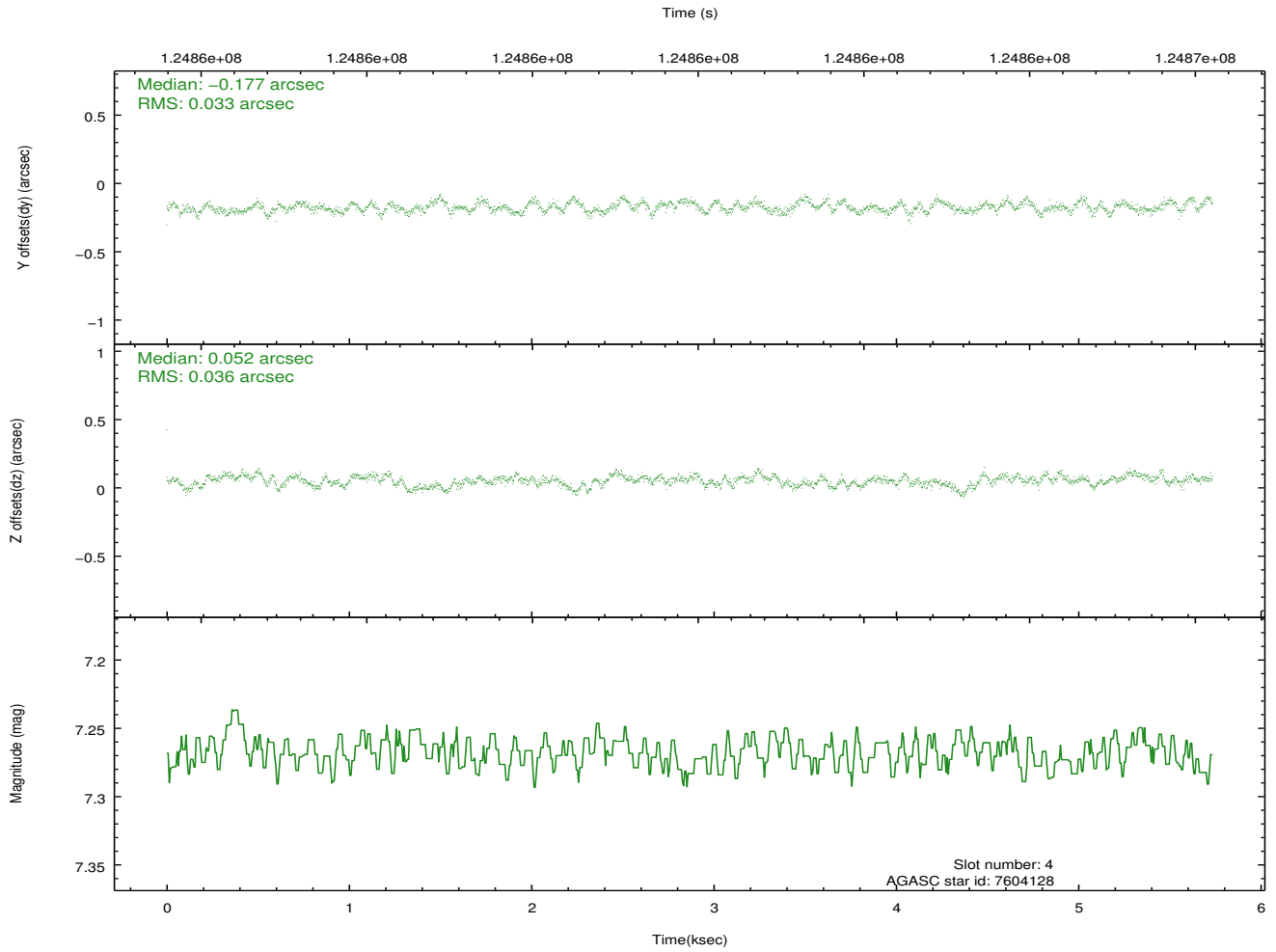
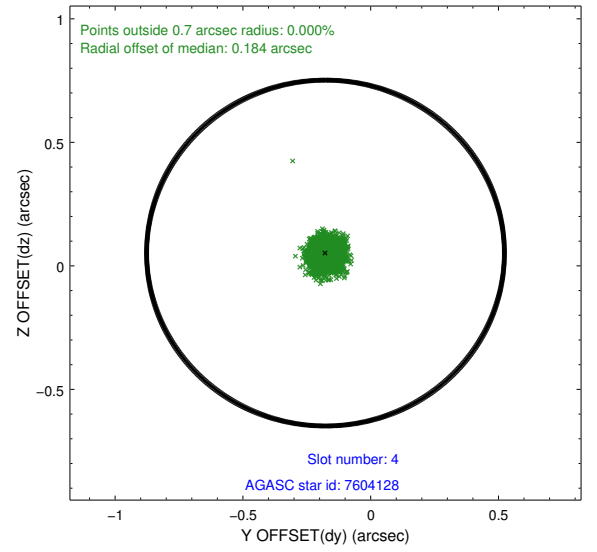
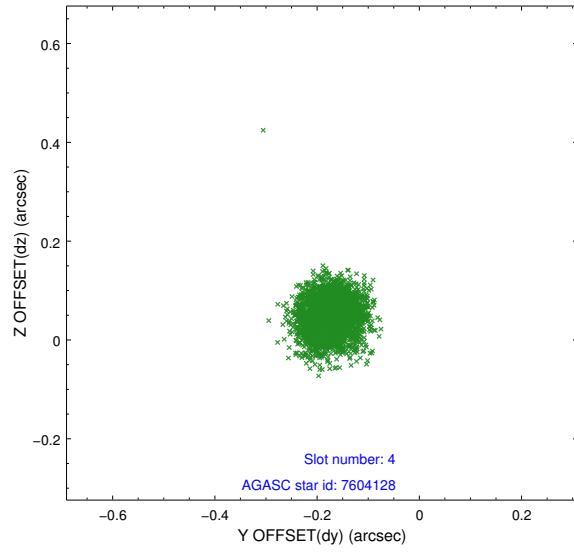
slot	status	id	mag	n_pts	med_dy	med_dz	dr1	dr2	ra	dec	mean_y	mean_z
0	FID	ACIS-S-2	7.11	1397	-0.049	-0.001	0.007	0.011	0.000000	0.000000	-754.83	-1727.07
1	FID	ACIS-S-4	7.21	1394	-0.007	0.024	0.005	0.010	0.000000	0.000000	2157.97	180.44
2	FID	ACIS-S-5	7.24	1397	0.025	-0.014	0.006	0.011	0.000000	0.000000	-1806.30	175.16
3	GUIDE	7739992	9.35	2792	0.027	0.189	0.095	0.154	47.606496	4.258171	546.73	1851.02
4	GUIDE	7604128	7.27	2794	-0.177	0.052	0.053	0.083	47.412135	4.384216	-207.87	1500.33
5	GUIDE	7607008	9.68	2795	-0.092	0.035	0.092	0.148	46.679520	4.196211	-1029.34	-1088.38
6	GUIDE	7603264	8.37	2796	0.055	-0.077	0.075	0.121	46.951152	3.412010	1881.23	-1760.60
7	GUIDE	7612184	9.41	2772	0.188	-0.195	0.121	0.193	47.000863	3.268718	2414.55	-1883.21

2.4 Star Slots

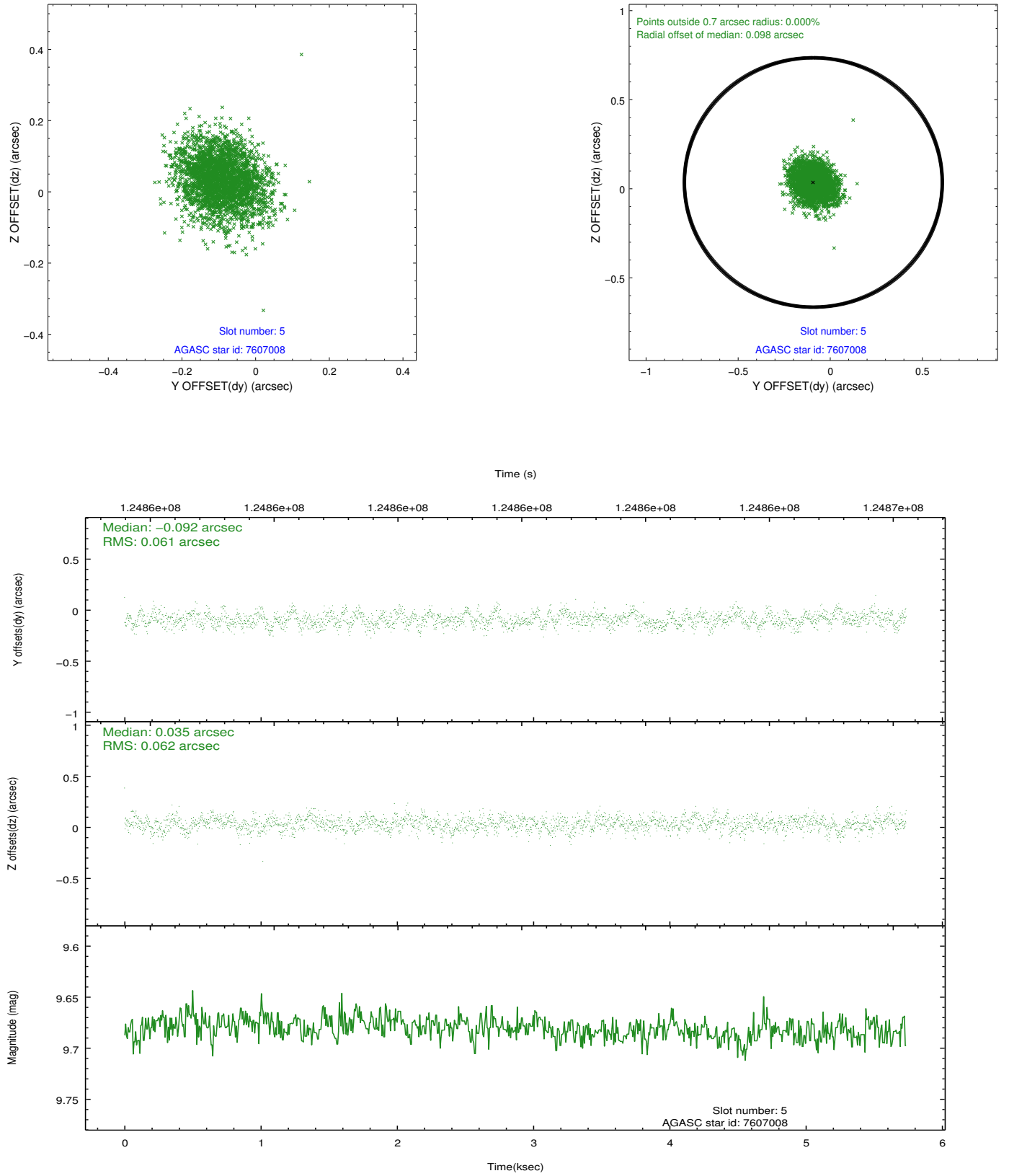
2.4.1 Slot 3



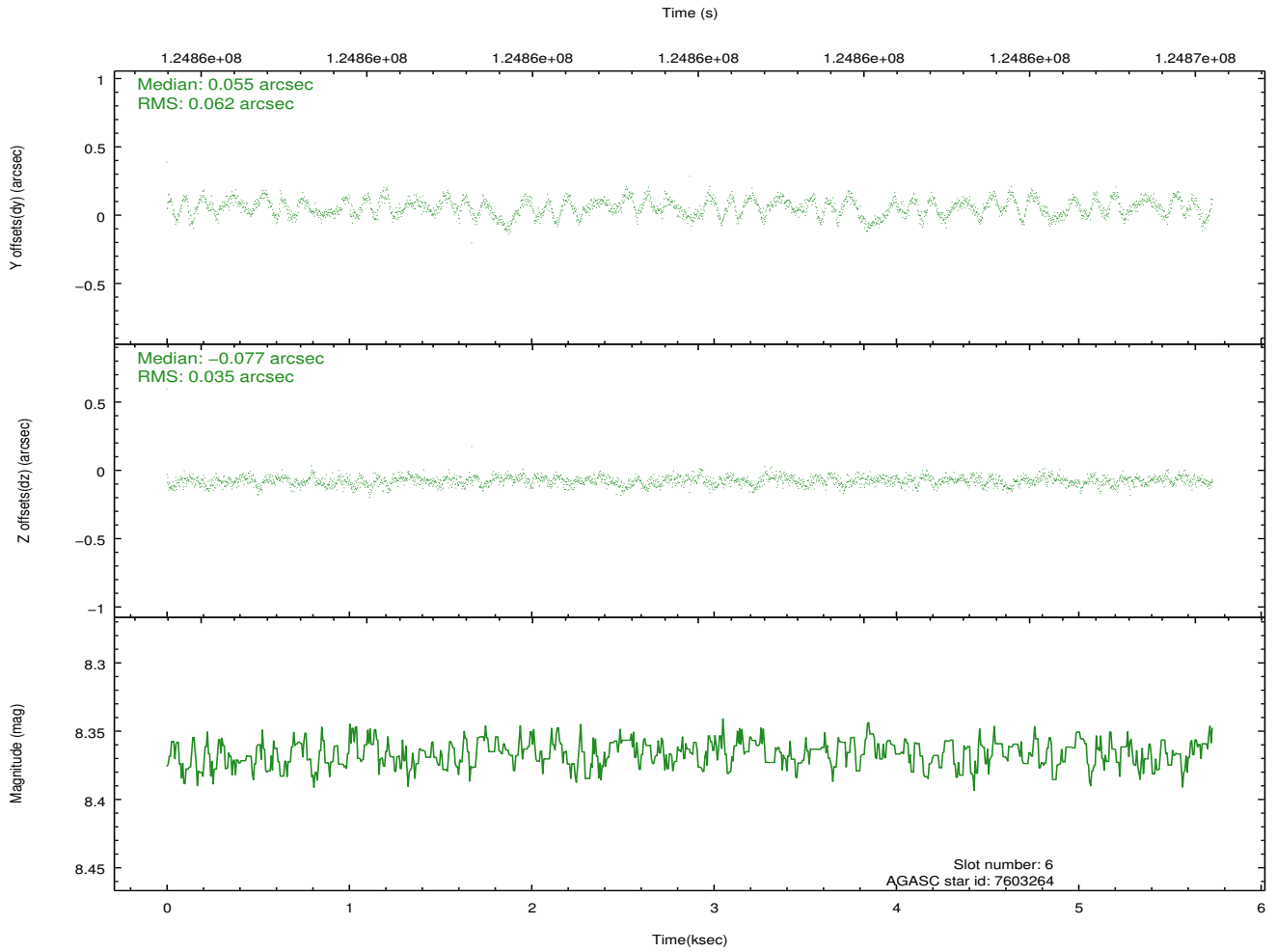
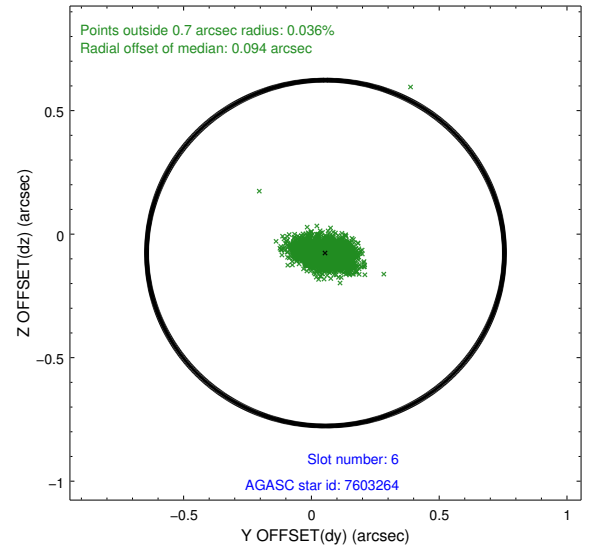
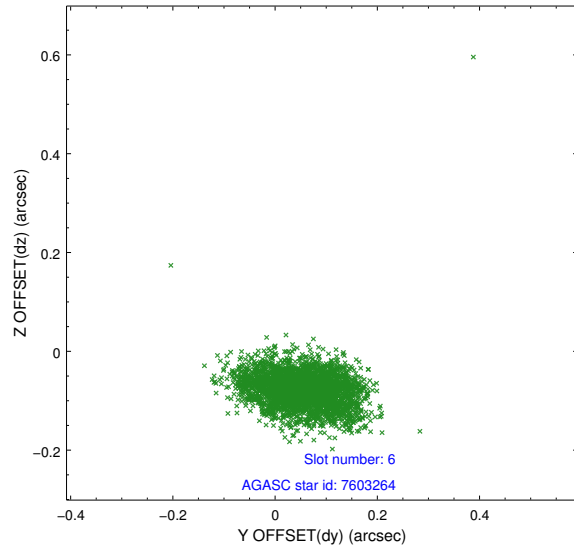
2.4.2 Slot 4



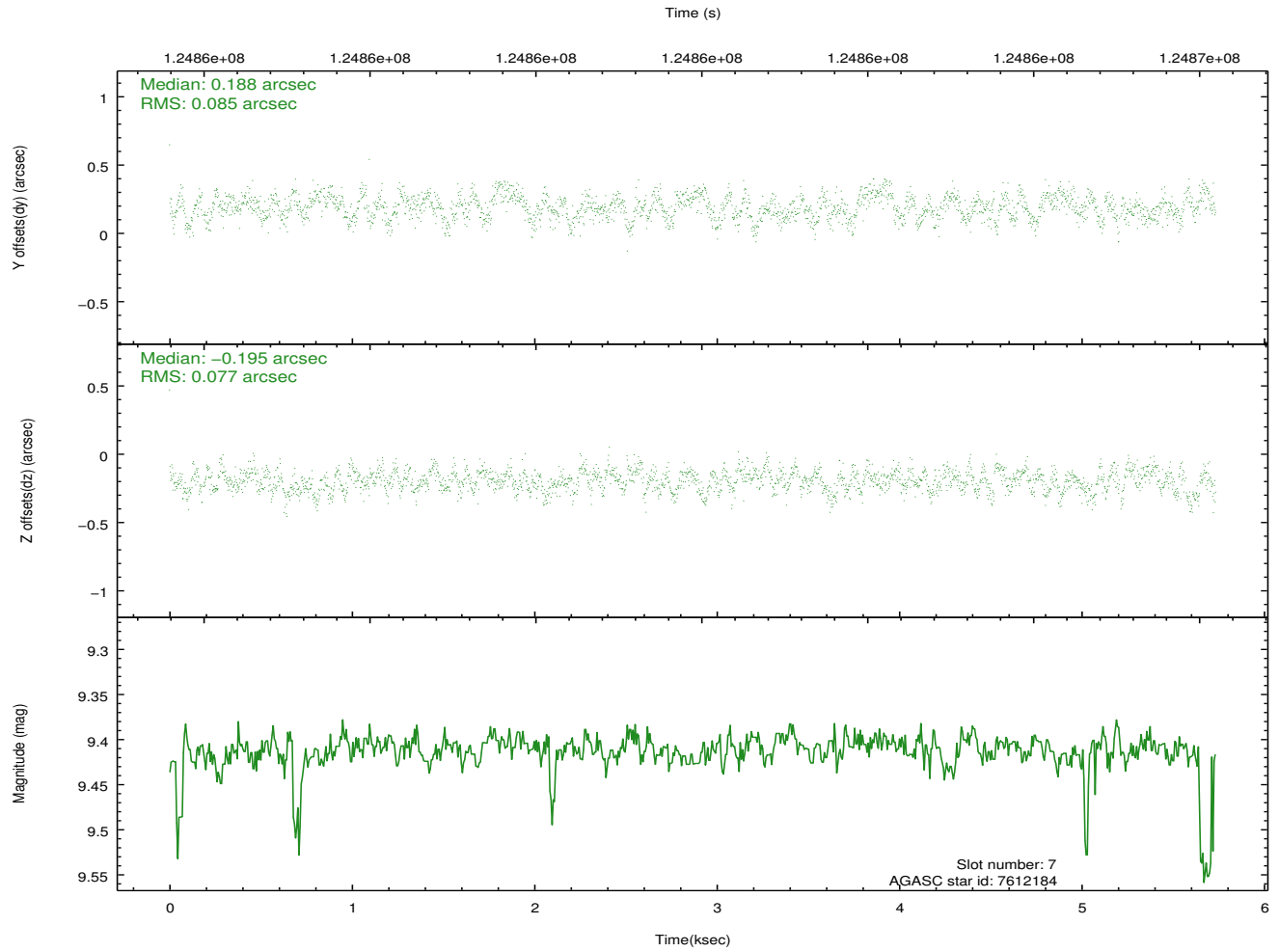
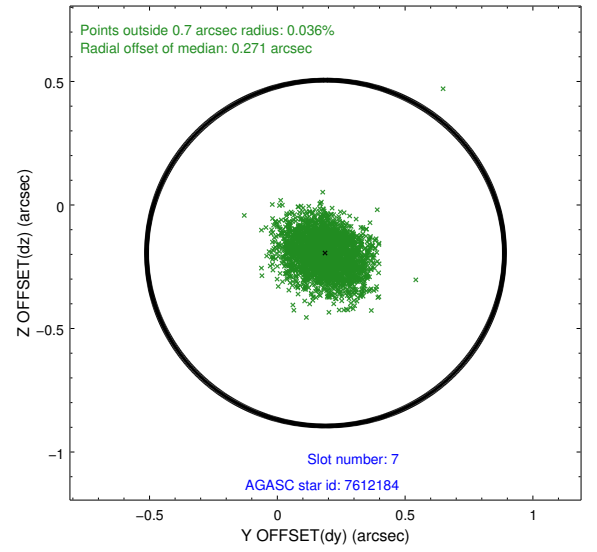
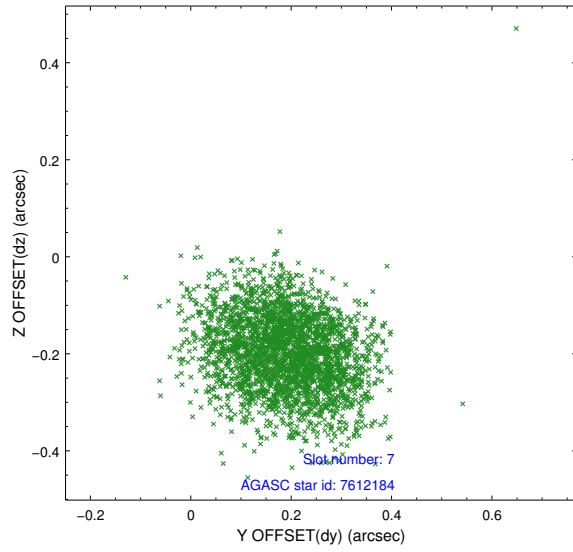
2.4.3 Slot 5



2.4.4 Slot 6

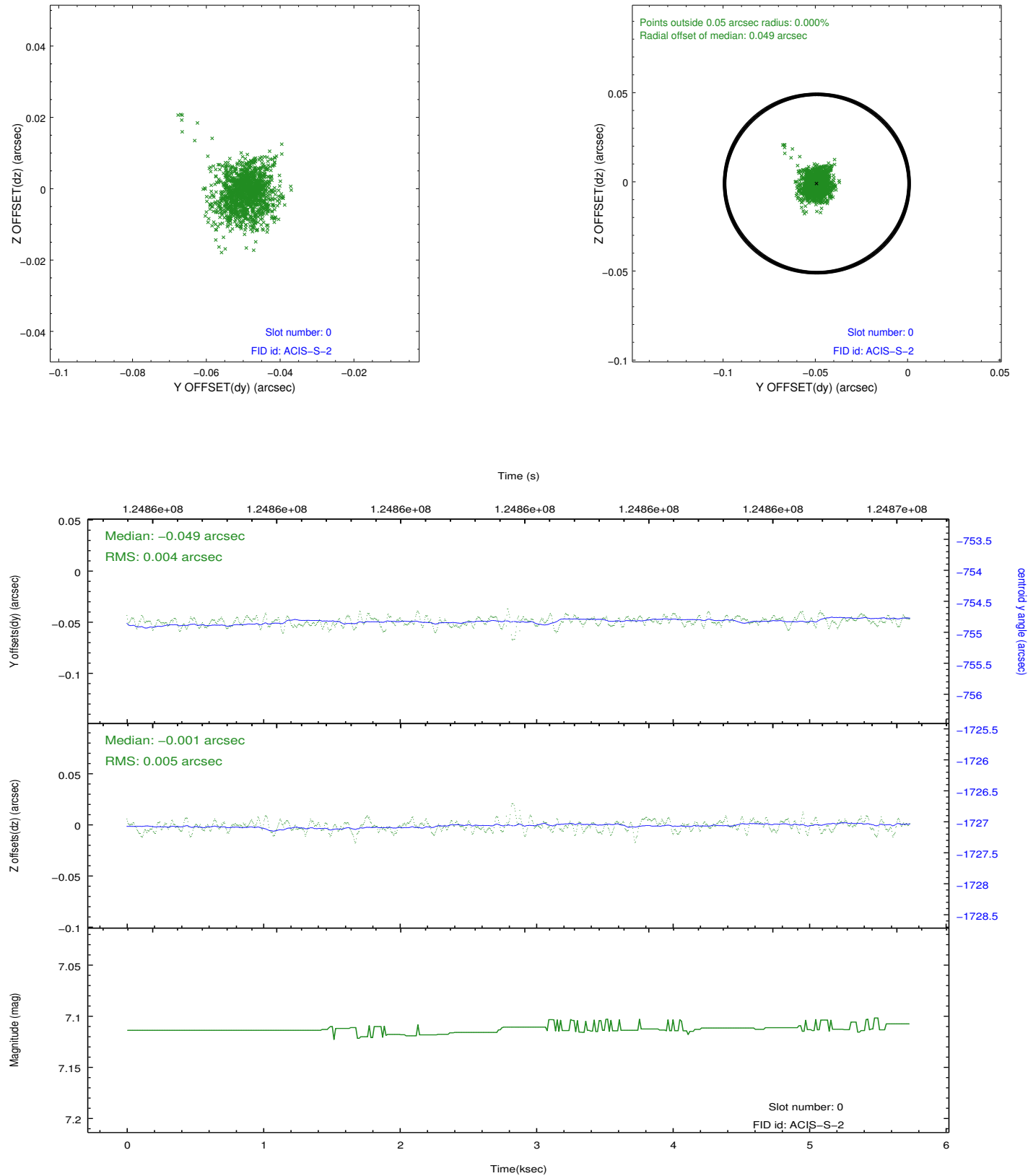


2.4.5 Slot 7

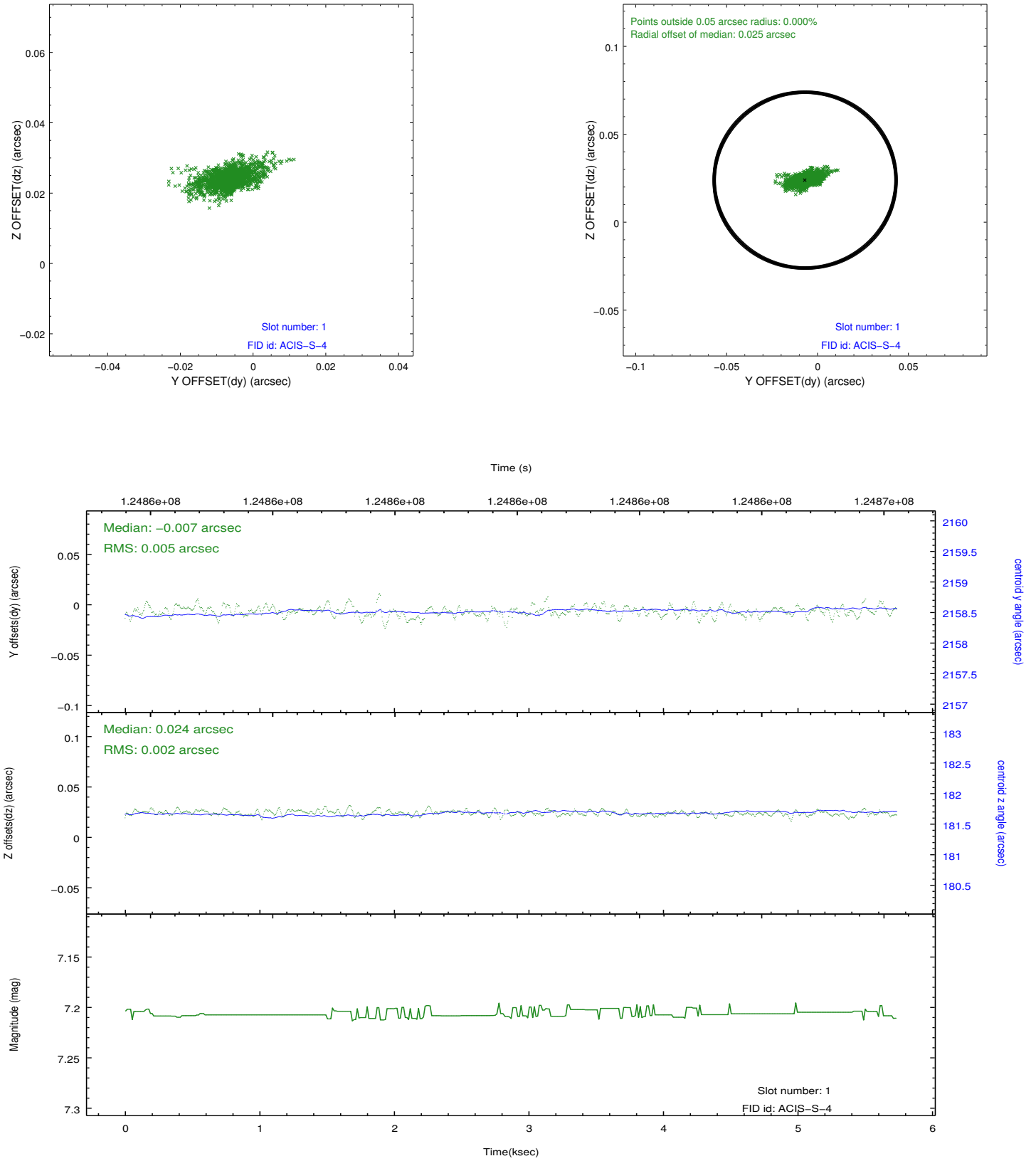


2.5 FID Slots

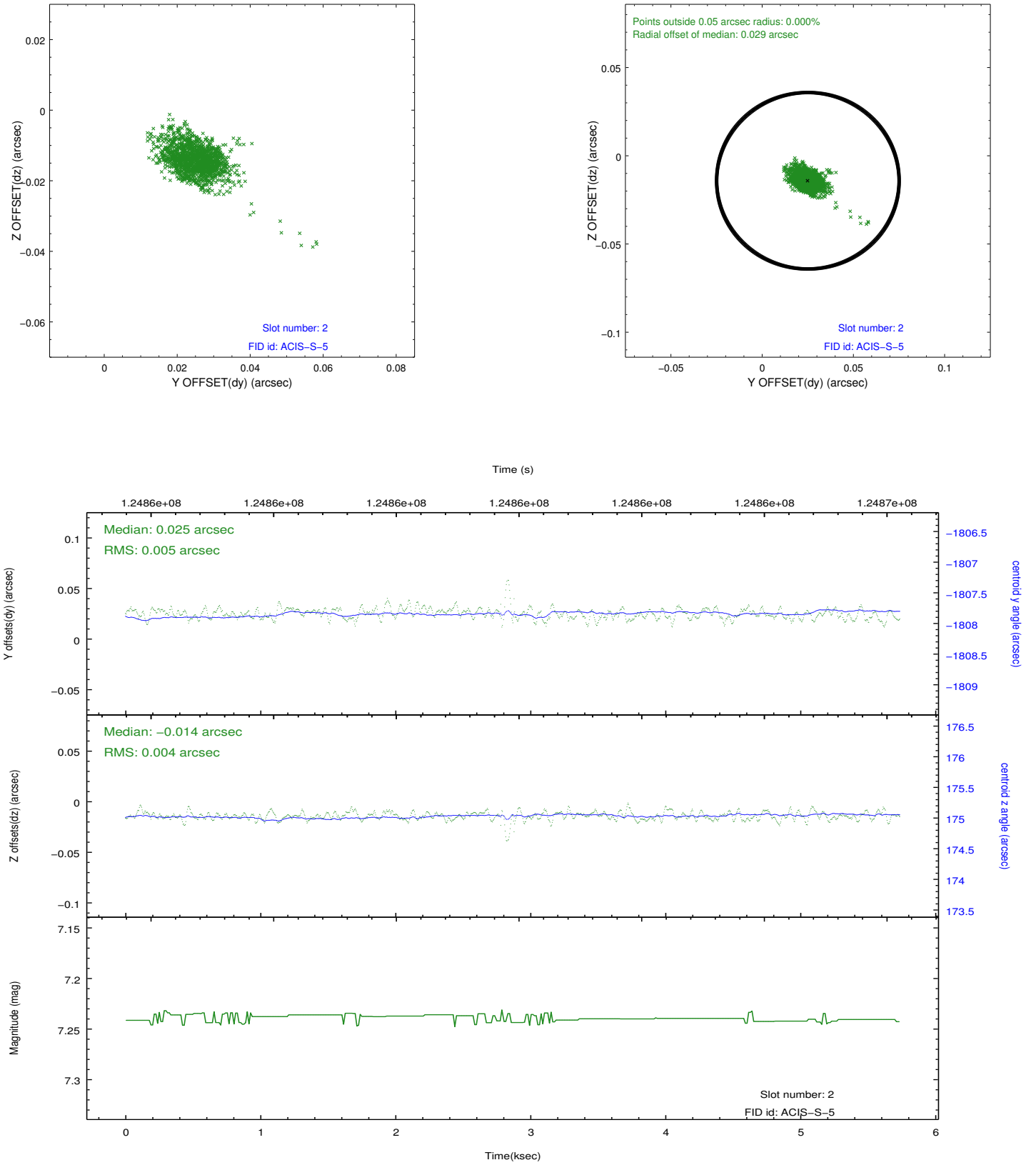
2.5.1 Slot 0



2.5.2 Slot 1



2.5.3 Slot 2



A Summary

A.1 Status

V&V Scientist	Beth Sundheim
V&V Date (YYYY-MM-DD)	2012.10.01
V&V Edition	1
V&V Disposition and Status	OK
V&V Charge Time	5.233

A.2 Comments