

V&V Reference Report

L2 ASCDS Version : 7.6.10

Observation 2848 - L2 Version 001
Chandra X-Ray Center

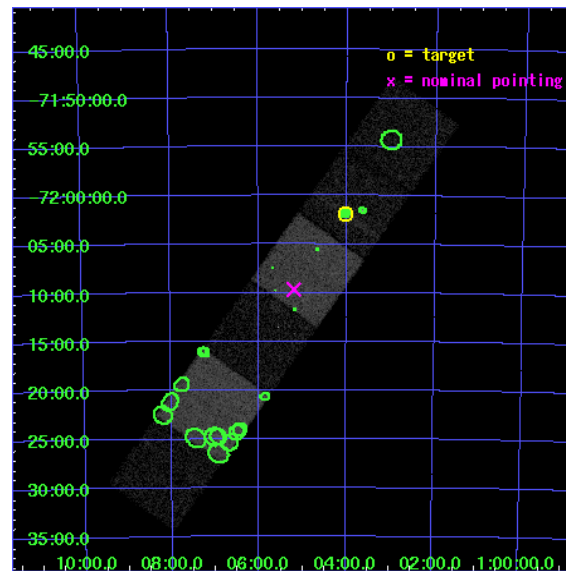
L2 Processing Date : Jan 17 2007

Contents

1	Front	2
2	OBI	3
2.1	OBI	3
2.1.1	Images	3
2.1.2	Bias	3
2.1.3	Parameters	4
2.1.4	Events	4
2.2	Compared Parameters	5
2.3	Aspect	6
2.4	Star Slots	9
2.4.1	Slot 3	9
2.4.2	Slot 4	10
2.4.3	Slot 5	11
2.4.4	Slot 6	12
2.4.5	Slot 7	13
2.5	FID Slots	14
2.5.1	Slot 0	14
2.5.2	Slot 1	15
2.5.3	Slot 2	16
3	Point Sources	17
A	Summary	18
A.1	Status	18
A.2	Comments	18

1 Front

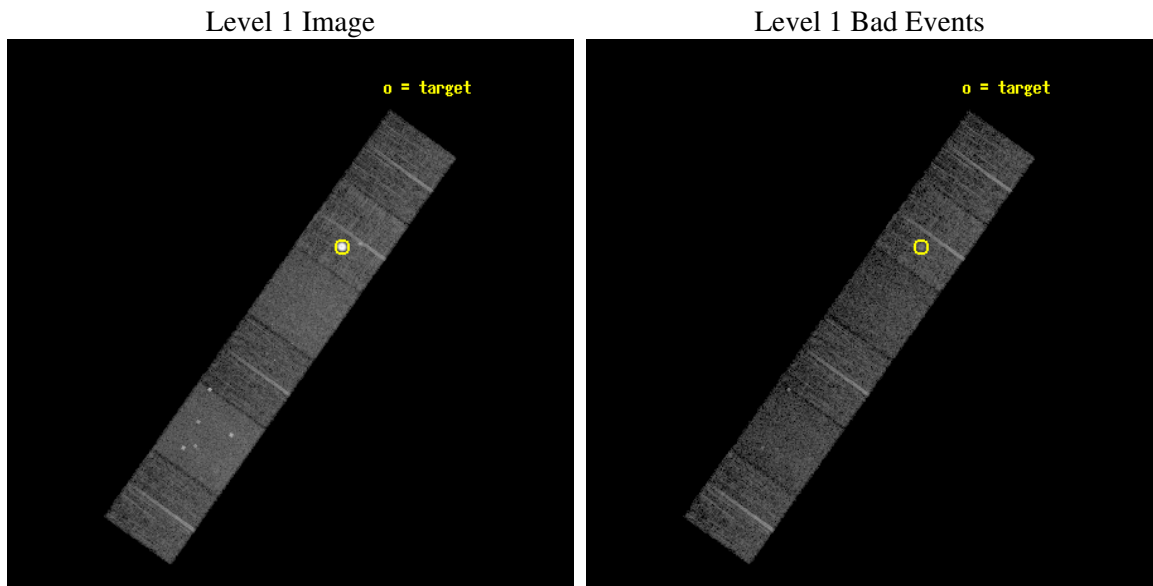
seq_num	590237
obs_id	2848
title	AO3A ACIS-S CALIBRATION OBSERVATIONS OF E0102-72
observer	Dr. CXC Calibration
object	E0102-72.3 [Chip S4, T=120, Offsets=-9,0,0]
dtcycle	0
cycle	P
ra_targ	16.01
dec_targ	-72.032028
ra_nom	16.298391722427
dec_nom	-72.1610931538
roll_nom	305.38773999176
revision	2
ontime	7558.4000070393
livetime	7462.6909950281
ontime4	7558.4000070393
ontime5	7558.4000070393
ontime6	7558.4000070393
ontime7	7558.4000070393
ontime8	7558.4000070393
ontime9	7558.4000070393
l2events	103292



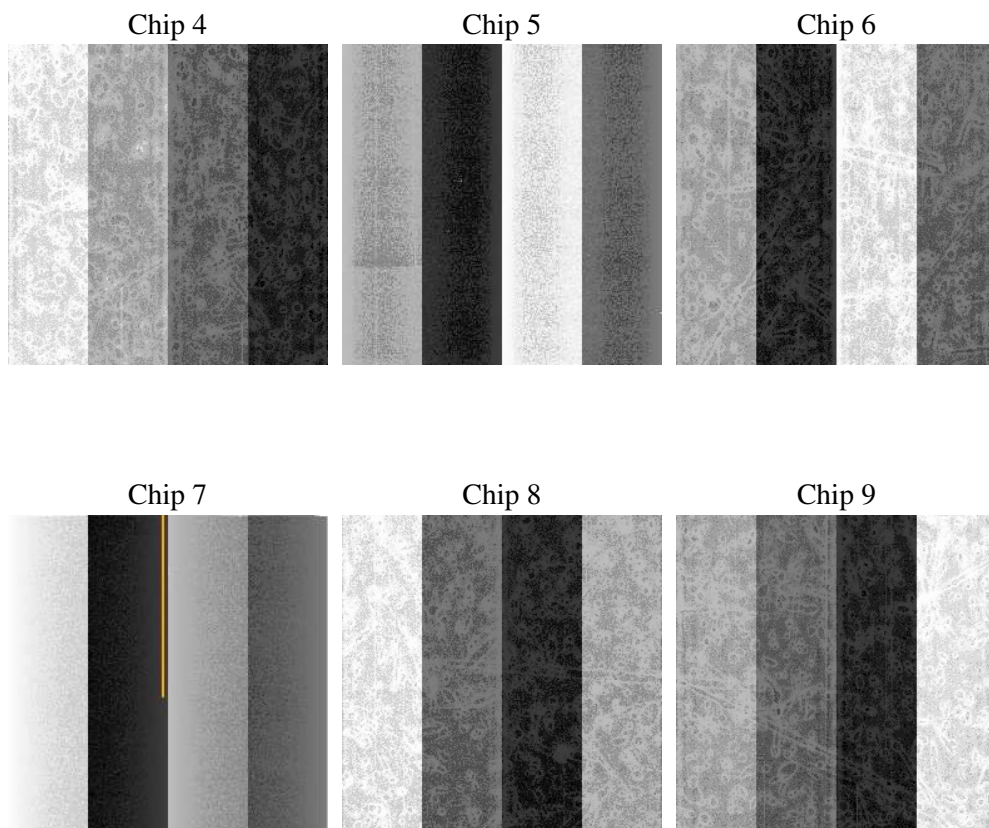
2 OBI

2.1 OBI

2.1.1 Images



2.1.2 Bias



2.1.3 Parameters

obi_num	1
ascdsver	7.6.10
caldbver	3.3.0
date	2007-01-18T02:58:54
revision	2

sched_exp_time	7800.000000
ontime	7558.4000070393
ontime4	7558.4000070393
ontime5	7558.4000070393
ontime6	7558.4000070393
ontime7	7558.4000070393
ontime8	7558.4000070393
ontime9	7558.4000070393
l1events	374969

2.1.4 Events

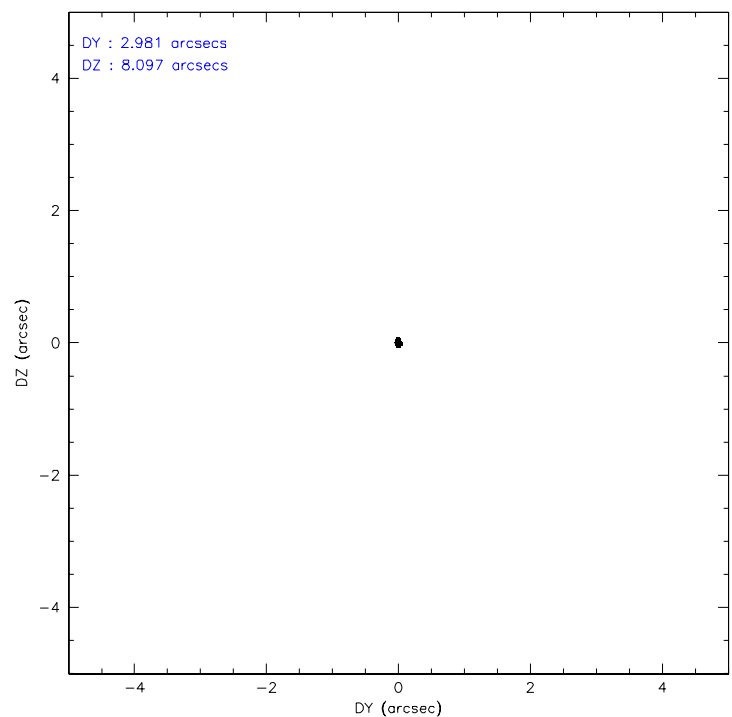
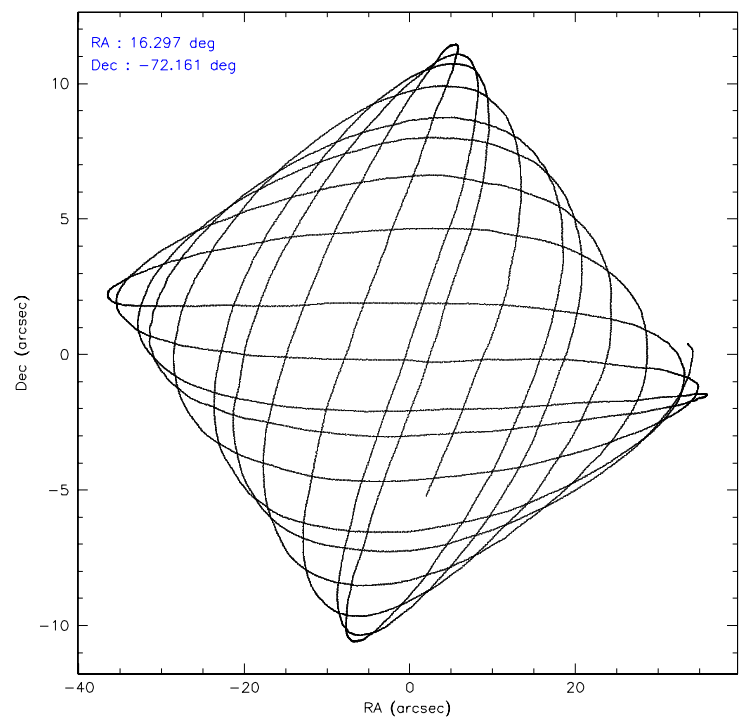
	ccd 4	ccd 5	ccd 6	ccd 7	ccd 8	ccd 9
level 1 events	52520	70708	48577	64039	90342	48783
rejected events	46681	37829	42702	36781	50689	42901
rejected %	88%	53%	87%	57%	56%	87%

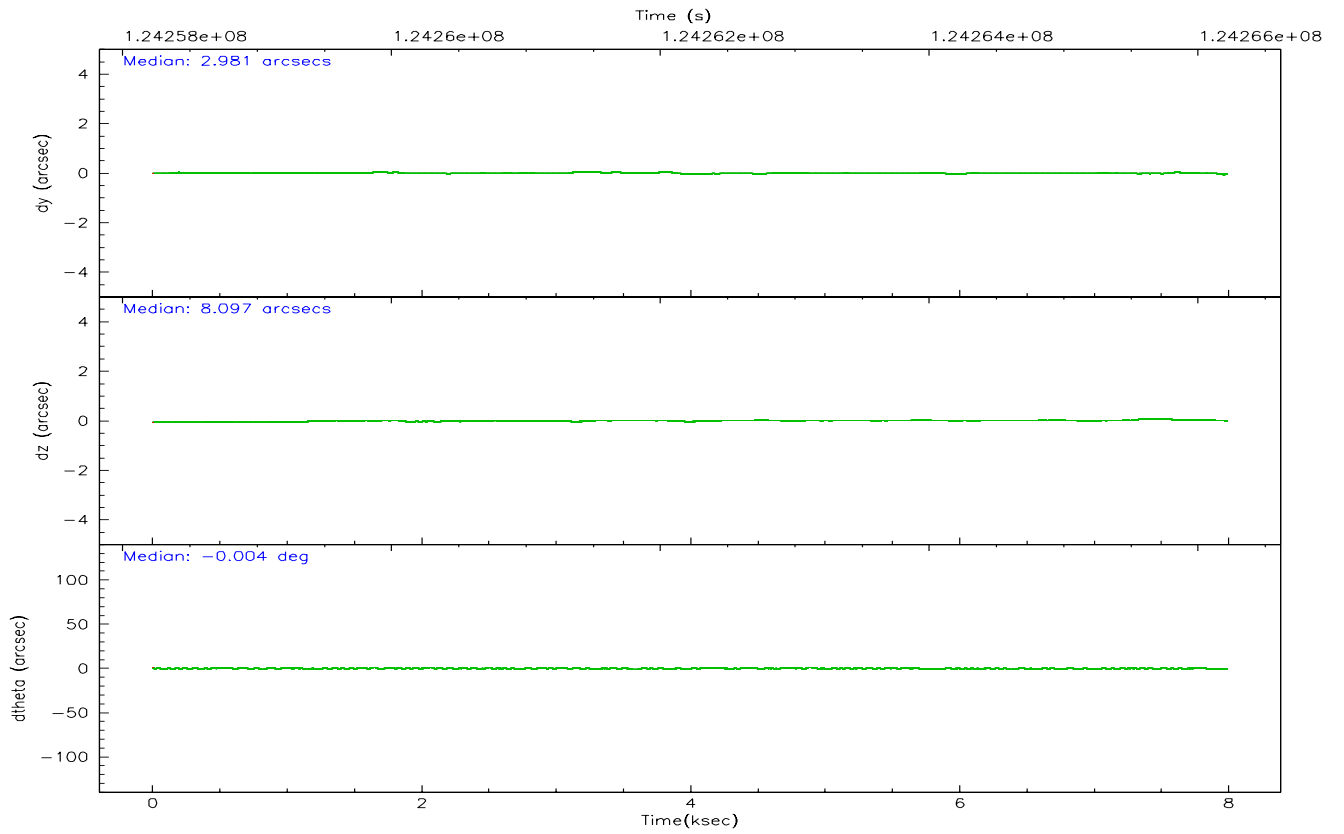
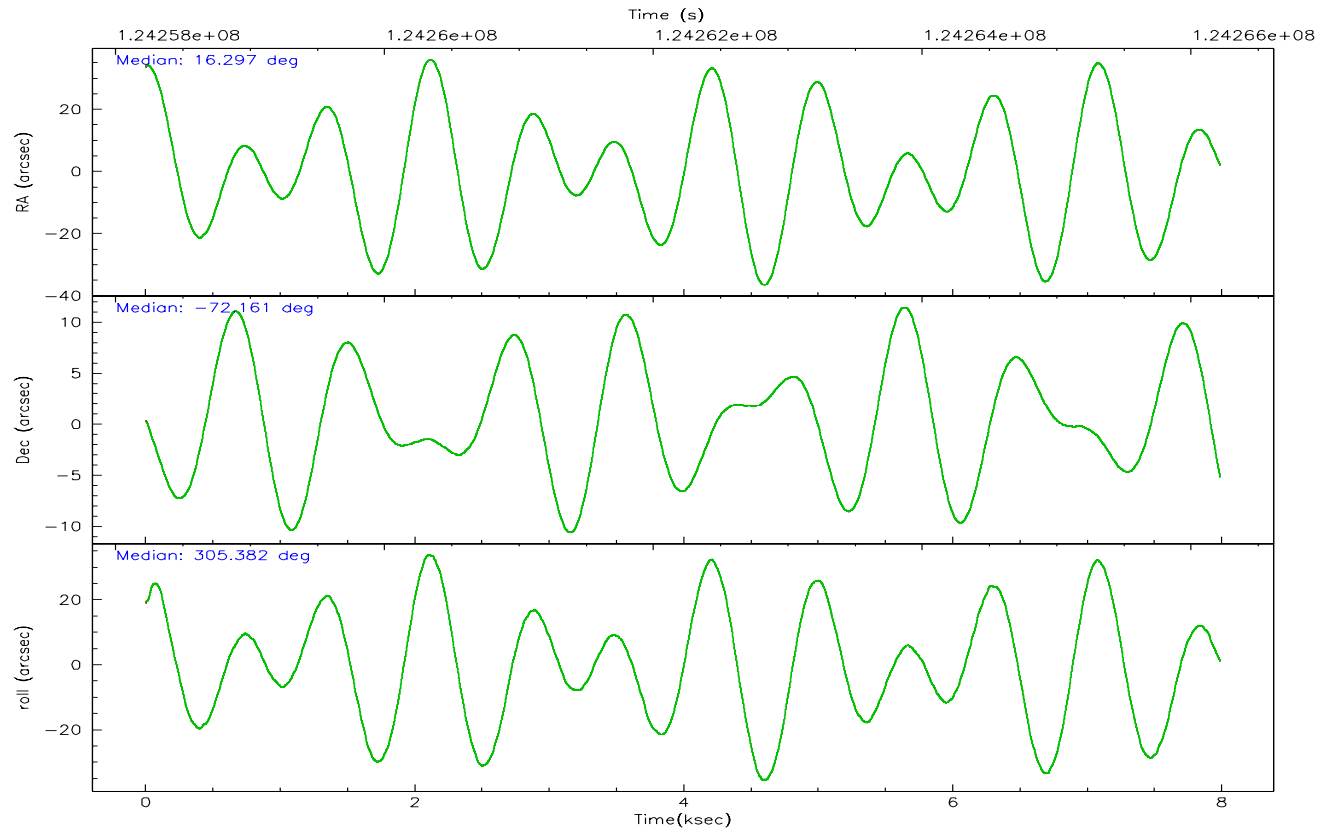
	ccd 4	ccd 5	ccd 6	ccd 7	ccd 8	ccd 9
grade 0 events	2462	4883	2626	2937	28185	2500
	4%	6%	5%	4%	31%	5%
grade 1 events	26	242	34	62	216	23
	0%	0%	0%	0%	0%	0%
grade 2 events	1343	9191	1130	5619	4499	1192
	2%	12%	2%	8%	4%	2%
grade 3 events	547	1326	530	2518	1791	568
	1%	1%	1%	3%	1%	1%
grade 4 events	511	1178	541	2505	1745	526
	0%	1%	1%	3%	1%	1%
grade 5 events	1750	5211	2064	5914	2731	2178
	3%	7%	4%	9%	3%	4%
grade 6 events	981	16331	1056	13702	3446	1097
	1%	23%	2%	21%	3%	2%
grade 7 events	44900	32346	40596	30782	47729	40699
	85%	45%	83%	48%	52%	83%

2.2 Compared Parameters

Parameter	Planned	Actual	Parameter	Planned	Actual
Instrument	ACIS	ACIS	Obspar format version number	6	6
Detector	ACIS-456789	ACIS-456789	Obspar file type	PREDICTED	ACTUAL
Grating	NONE	NONE	Obspar update status	NONE	UPDATED
Data mode	FAINT	FAINT	Number of optional ACIS chips dropped	0	0
Observation mode	POINTING	POINTING	On-chip summing requested	N	N
Pointing RA	16.217020	16.29839172242672	Subarray requested	NONE	NONE
Pointing Dec	-72.150017	-72.16109315380017	Alternating exposures requested	N	N
Pointing Roll	305.153672	305.3877399917556	Primary exposure time	0.000000	3.2
Window start time	123552064.184000	123552064.184000			
Window stop time	126144064.184000	126144064.184000			
SIM focus pos (mm)	-0.684267	-0.6828225247311905			
SIM defocus (mm)	0	0.001444936568705701			
SIM translation stage pos (mm)	-190.132523	-190.1425803651734			
SIM translation stage offset (mm)	0	0.01005778216563158			
Observation start time	124258414.184000	124258038.18278			
Observation start date	2001-12-09T04:12:30	2001-12-09T04:07:18			
Observation end time	124266214.184000	124266347.85812			
Observation end date	2001-12-09T06:22:30	2001-12-09T06:25:47			
Read mode	TIMED	TIMED			

2.3 Aspect



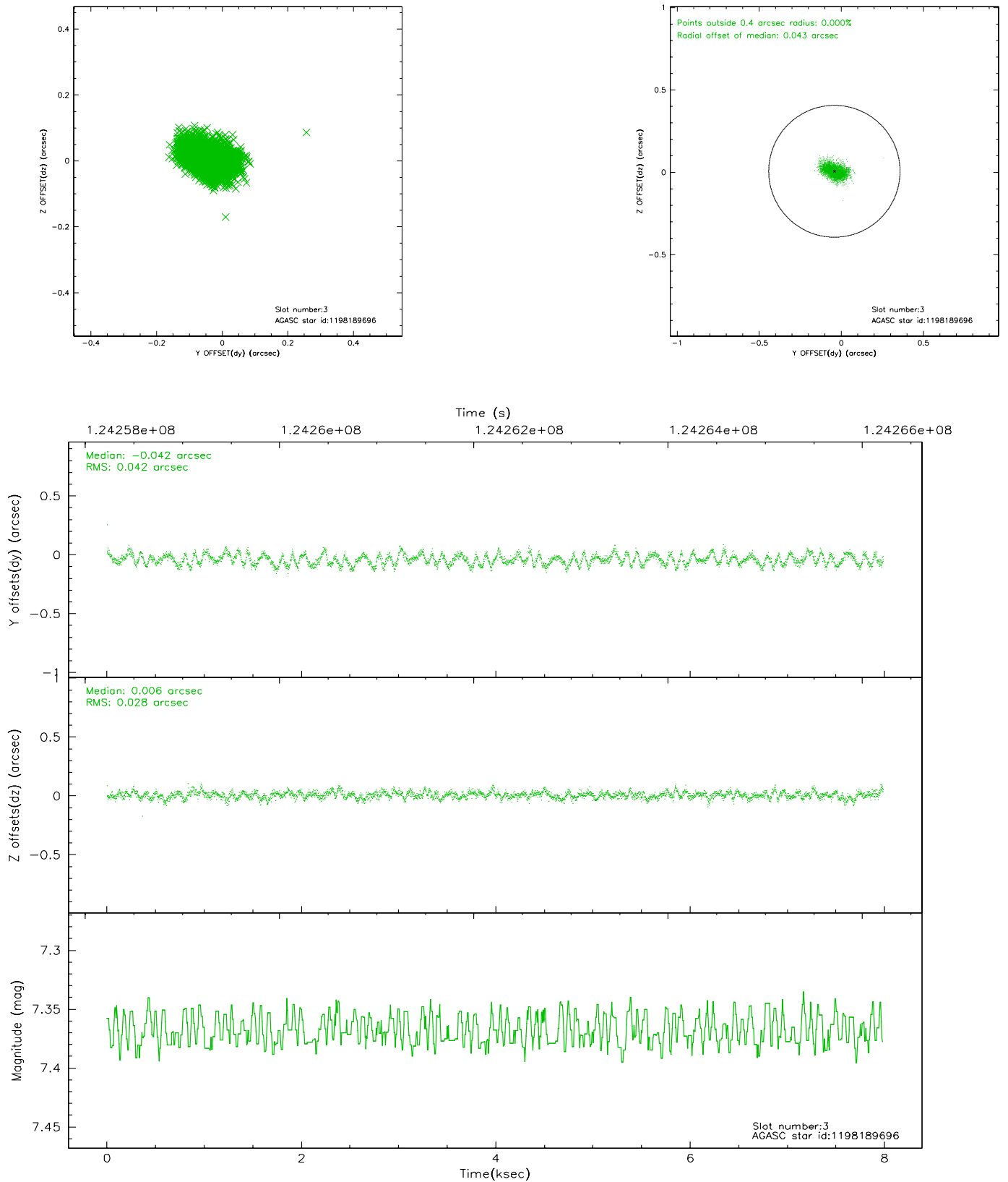


Slot Statistics

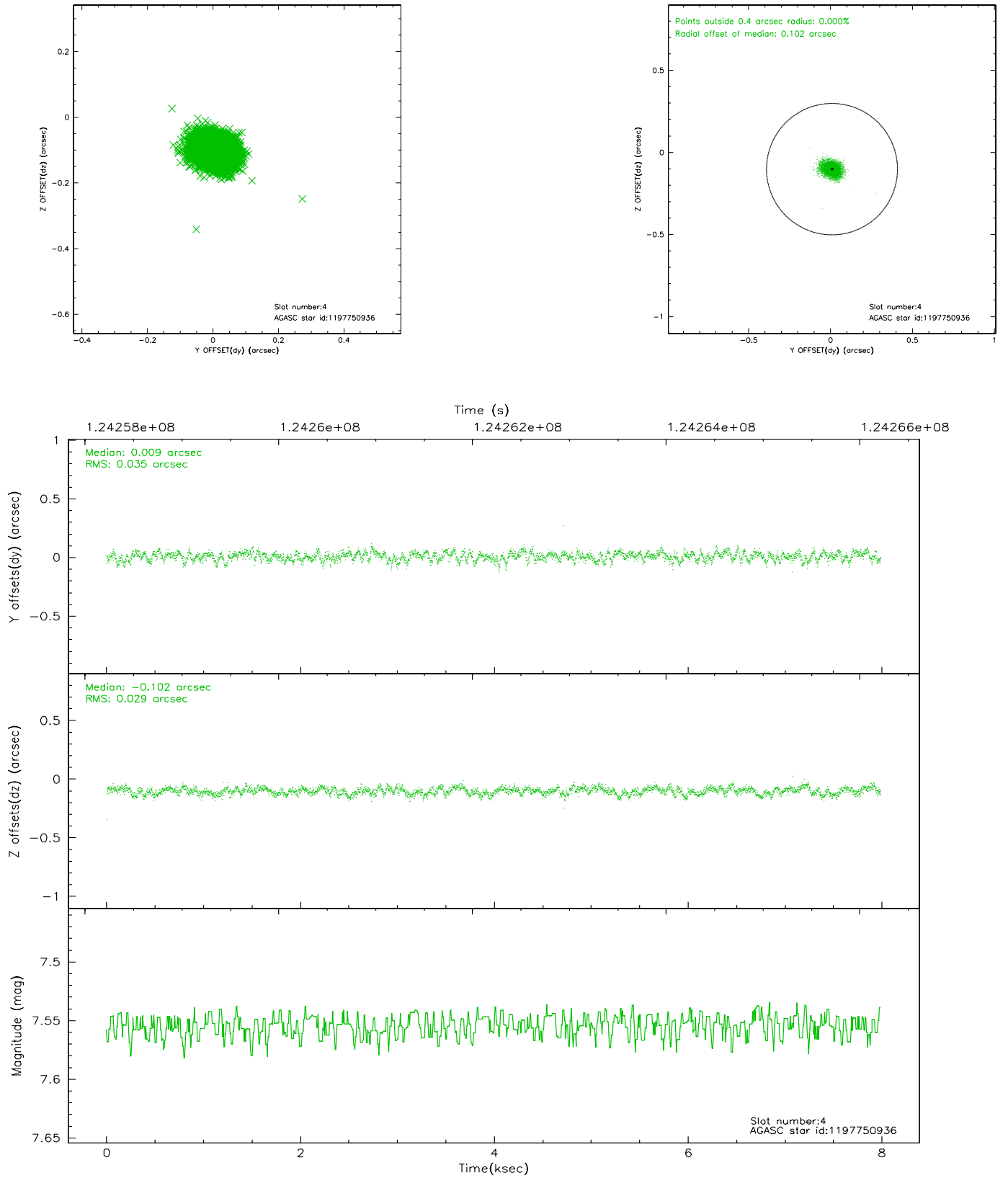
slot	status	id	mag	n_pts	med_dy	med_dz	dr1	dr2	ra	dec	mean_y	mean_z
0	FID	ACIS-S-2	7.11	1949	0.010	0.023	0.006	0.011	0.000000	0.000000	-755.62	-1729.21
1	FID	ACIS-S-4	7.20	1949	-0.082	-0.011	0.005	0.008	0.000000	0.000000	2157.25	178.50
2	FID	ACIS-S-5	7.24	1949	0.041	-0.003	0.006	0.010	0.000000	0.000000	-1807.52	173.00
3	GUIDE	1198189696	7.37	3897	-0.042	0.006	0.054	0.086	15.223750	-72.697522	1007.11	-2008.38
4	GUIDE	1197750936	7.55	3896	0.009	-0.102	0.048	0.077	15.387940	-71.549550	-2305.15	468.71
5	GUIDE	1197884536	8.50	3896	0.071	0.019	0.064	0.104	17.160729	-71.835289	-309.93	1514.56
6	GUIDE	1198283128	8.00	3897	-0.080	0.055	0.046	0.073	17.272580	-72.642428	2110.58	-97.97
7	GUIDE	1197878768	9.63	3889	0.038	0.024	0.118	0.194	16.656786	-71.304581	-2193.95	2167.18

2.4 Star Slots

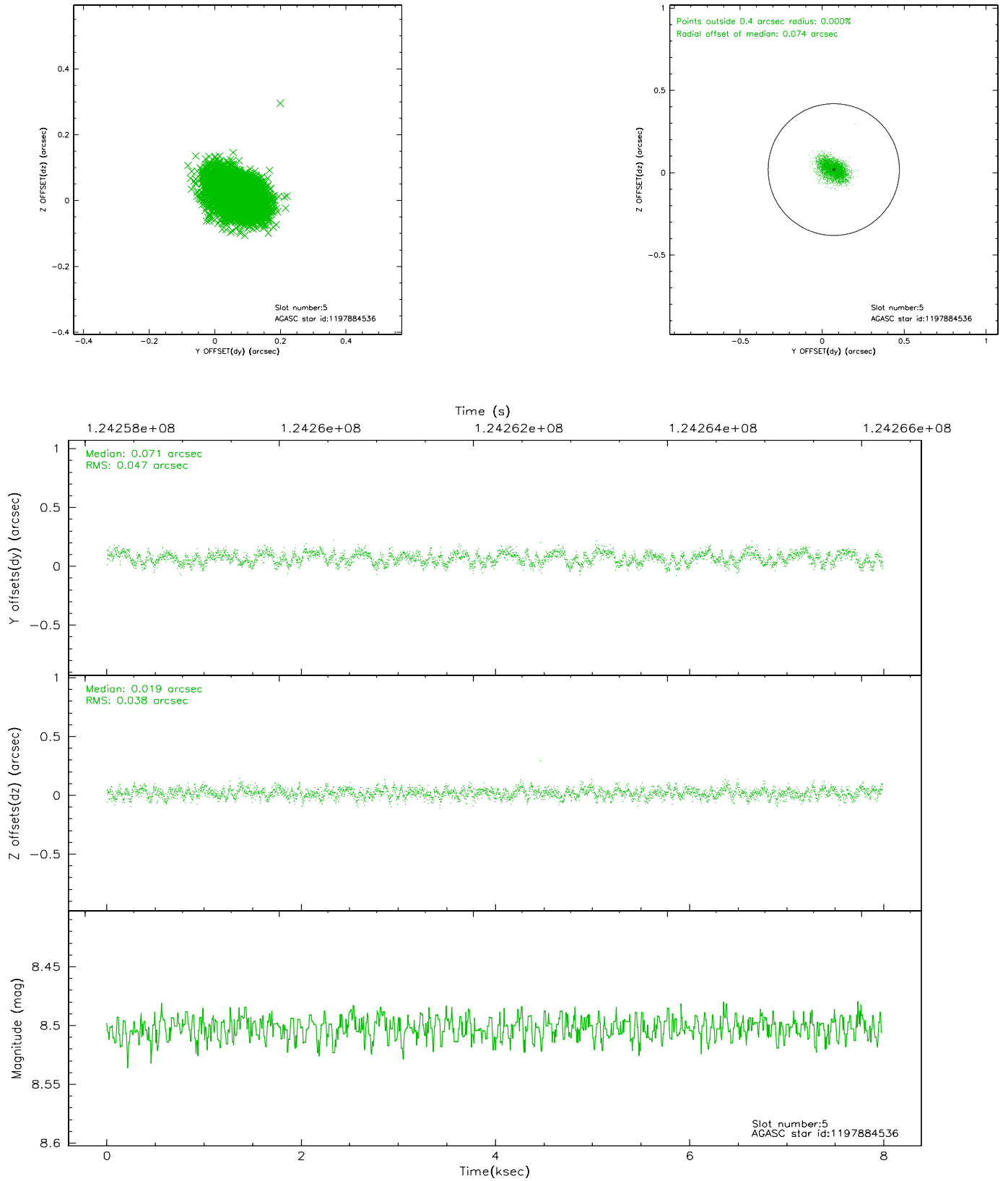
2.4.1 Slot 3



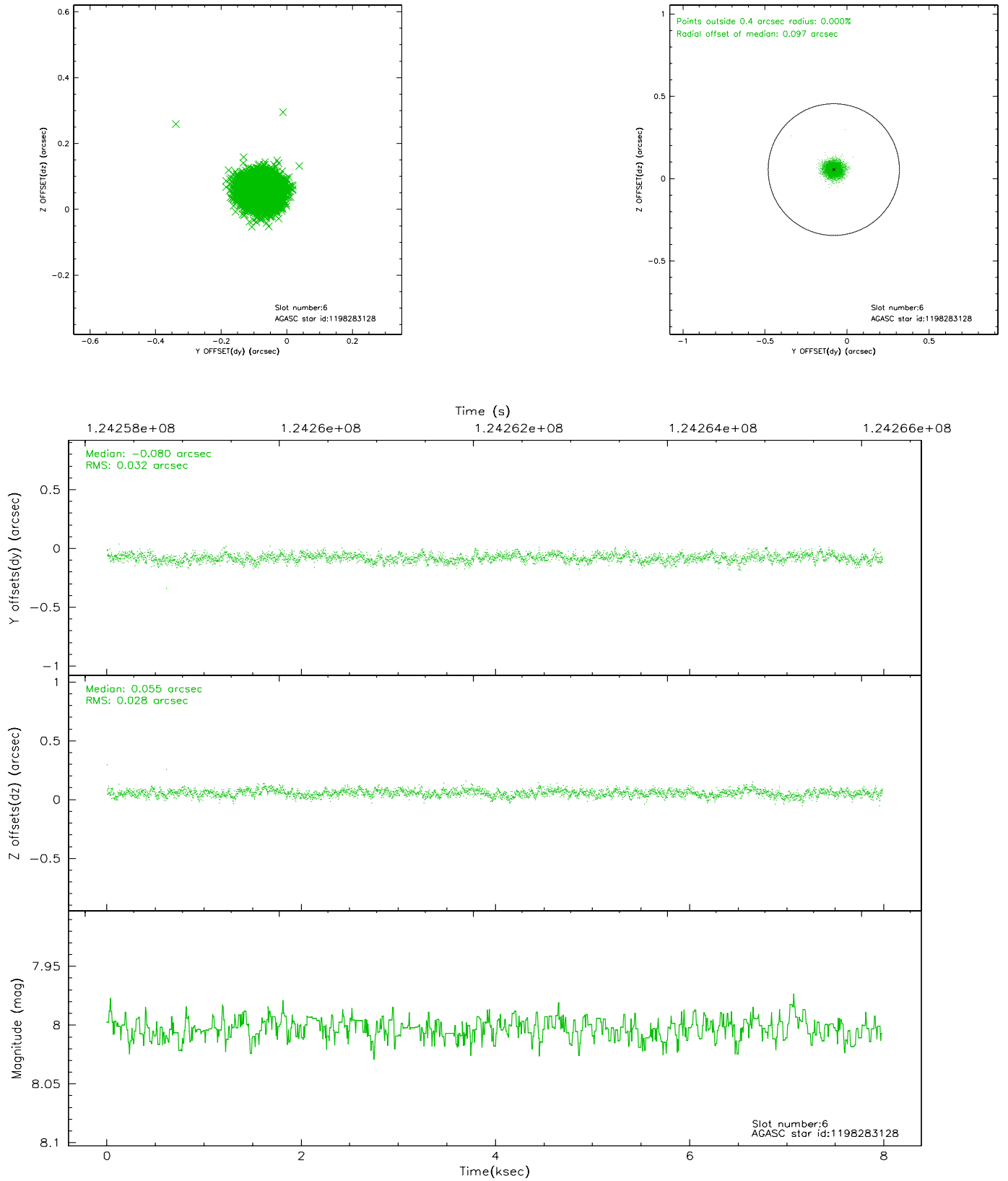
2.4.2 Slot 4



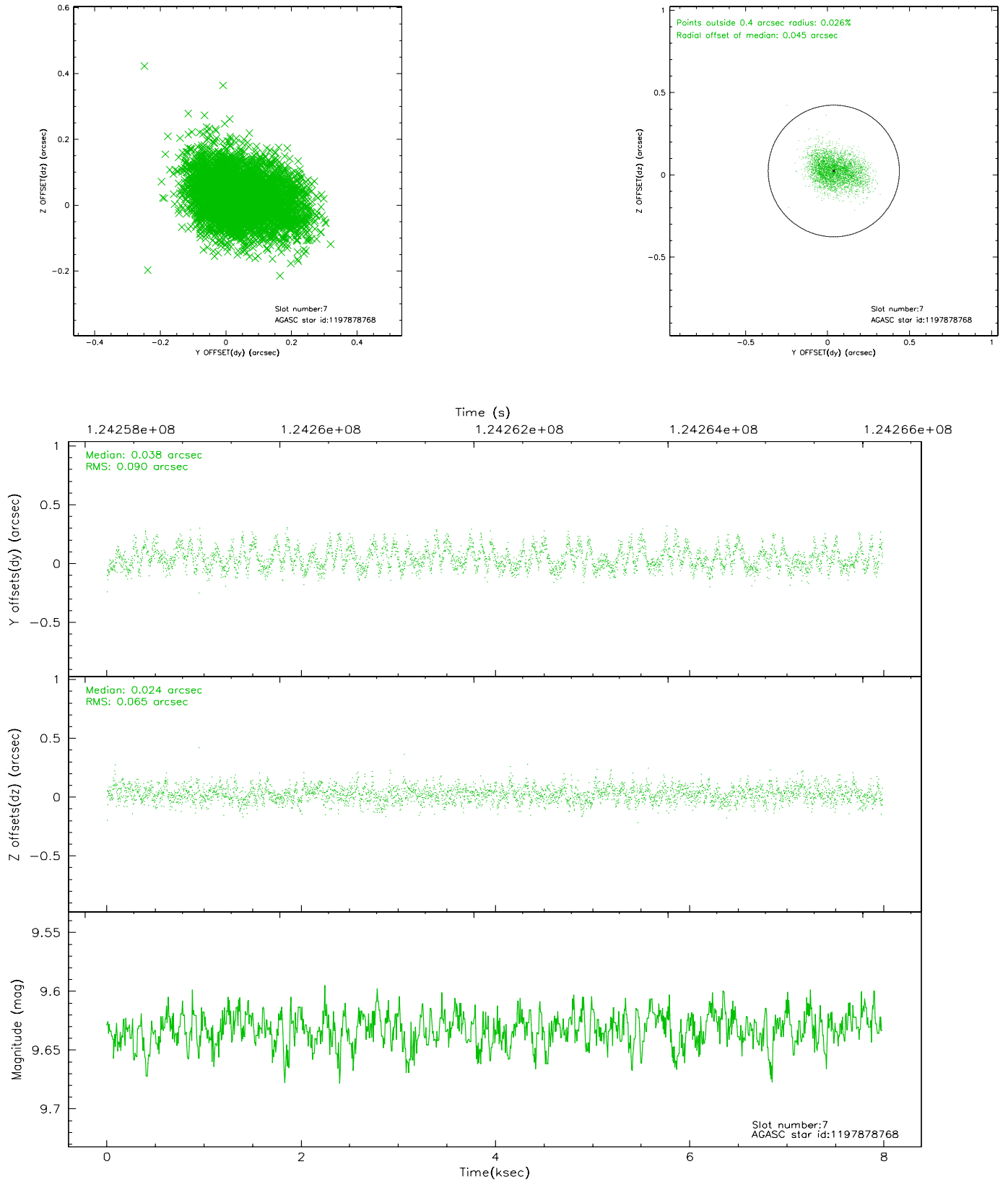
2.4.3 Slot 5



2.4.4 Slot 6

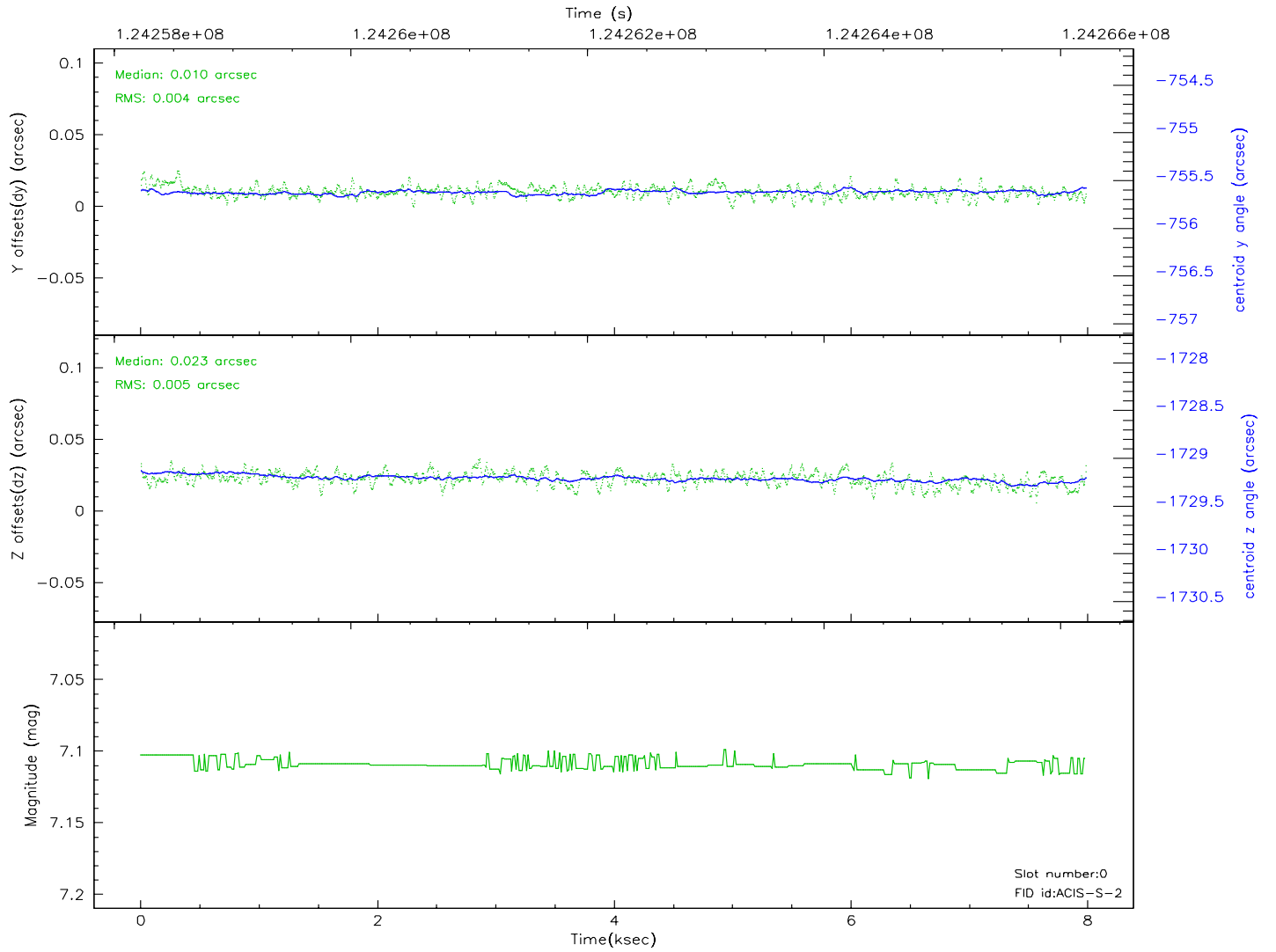
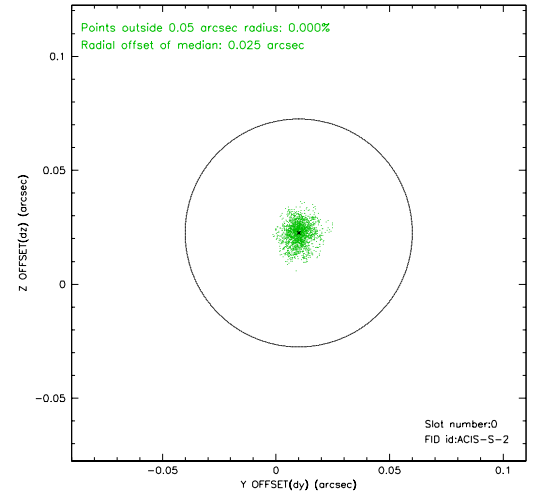
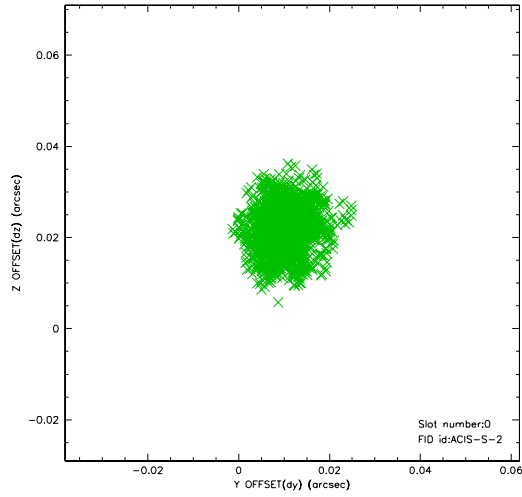


2.4.5 Slot 7

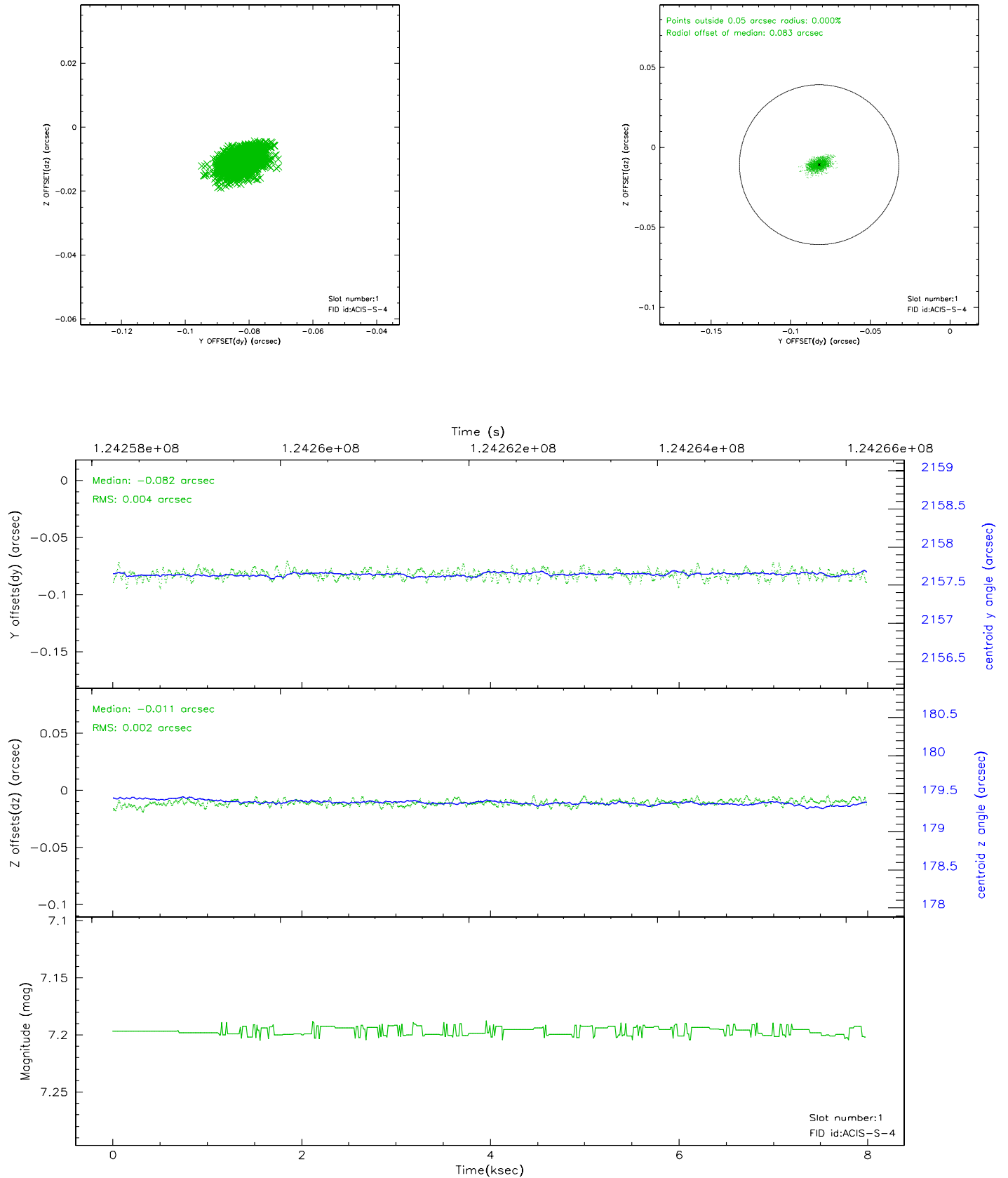


2.5 FID Slots

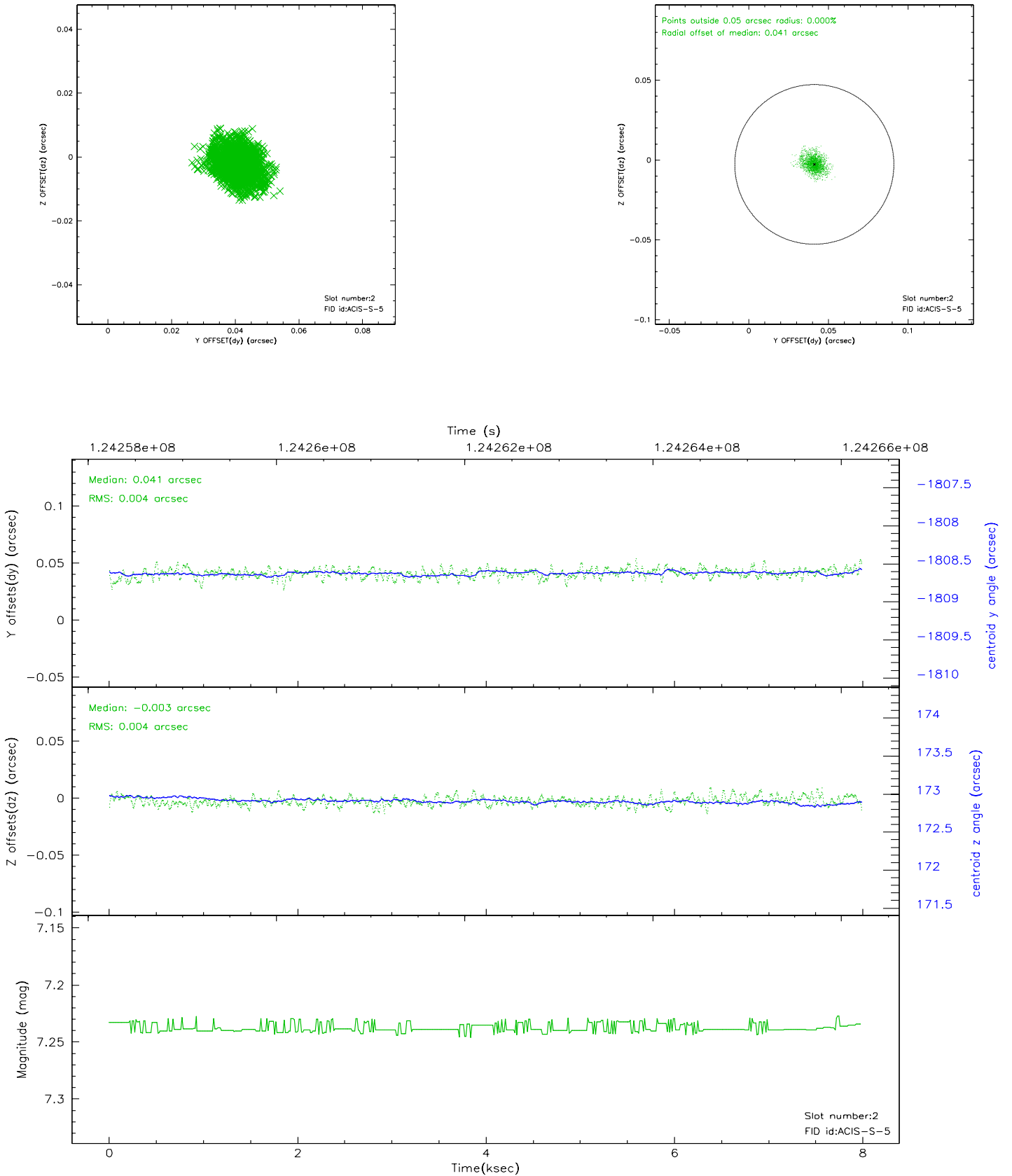
2.5.1 Slot 0



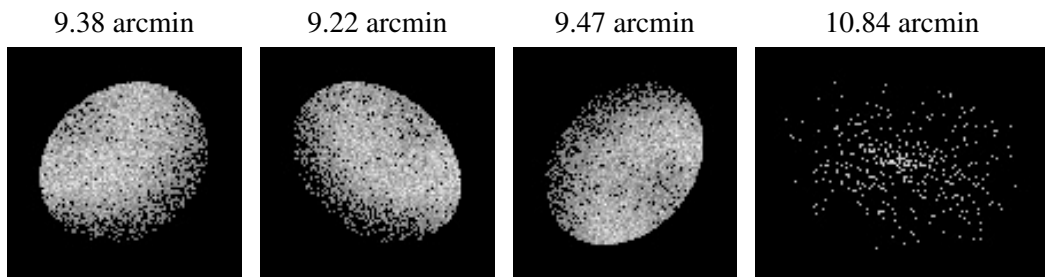
2.5.2 Slot 1



2.5.3 Slot 2



3 Point Sources



A Summary

A.1 Status

V&V Scientist	Jen Lauer
V&V Date (YYYY-MM-DD)	2007.01.18
V&V Edition	1
V&V Disposition and Status	OK
V&V Charge Time	7.561

A.2 Comments

Window constraint met.