

V&V Reference Report

L2 ASCDS Version : 7.6.8.1

Observation 2818 - L2 Version 001
Chandra X-Ray Center

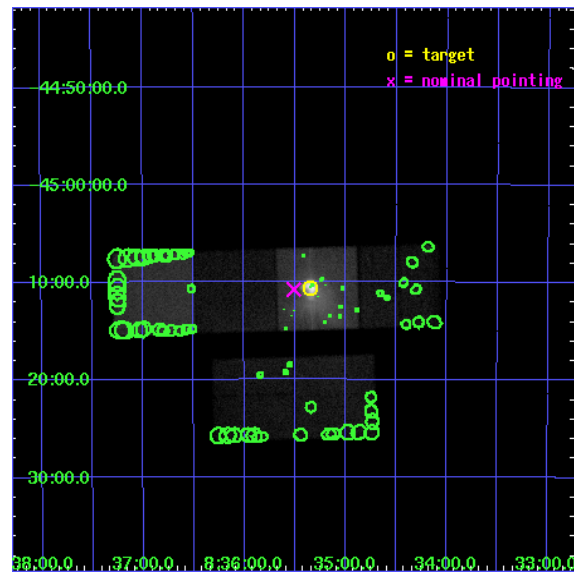
L2 Processing Date : Aug 29 2006

Contents

1	Front	2
2	OBI	3
2.1	OBI	3
2.1.1	Images	3
2.1.2	Bias	3
2.1.3	Parameters	4
2.1.4	Events	4
2.2	Compared Parameters	5
2.3	Aspect	6
2.4	Star Slots	9
2.4.1	Slot 3	9
2.4.2	Slot 4	10
2.4.3	Slot 5	11
2.4.4	Slot 6	12
2.4.5	Slot 7	13
2.5	FID Slots	14
2.5.1	Slot 0	14
2.5.2	Slot 1	15
2.5.3	Slot 2	16
3	Point Sources	17
A	Summary	18
A.1	Status	18
A.2	Comments	18

1 Front

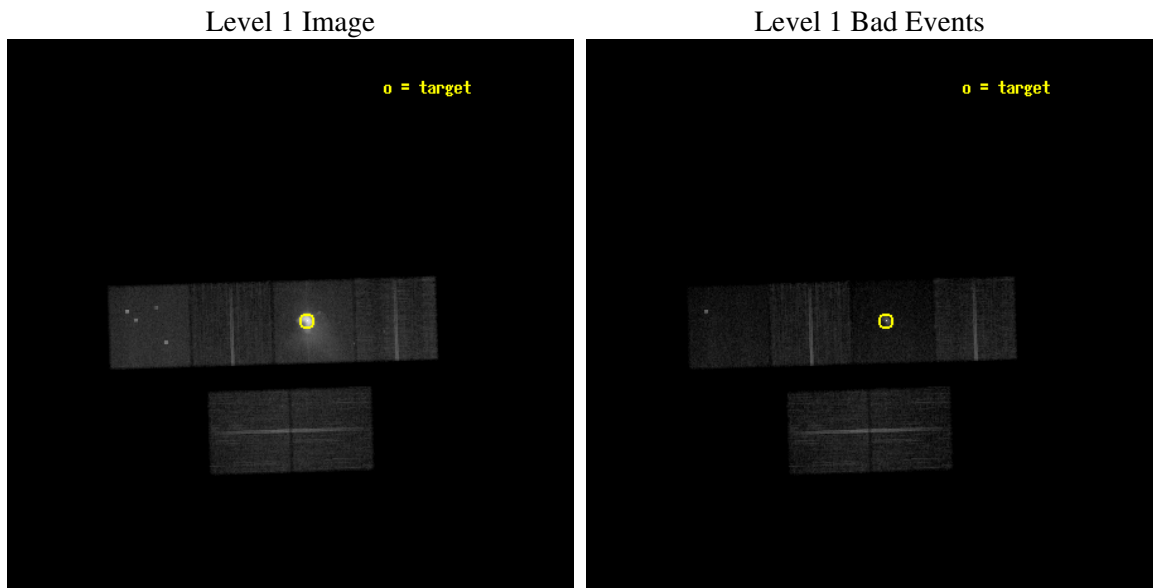
seq_num	500268
obs_id	2818
title	THE DYNAMICAL PULSAR-WIND NEBULA IN THE VELA SNR
observer	Dr. George Pavlov
object	VELA PWN
dtcycle	0
cycle	P
ra_targ	128.83625
dec_targ	-45.176667
ra_nom	128.87739537002
dec_nom	-45.179293611707
roll_nom	358.29321485269
revision	2
ontime	18902.400017604
livetime	18663.046446922
ontime2	18902.400017604
ontime3	18902.400017604
ontime5	18902.400017604
ontime6	18902.400017604
ontime7	18902.400017604
ontime8	18902.400017604
l2events	527296



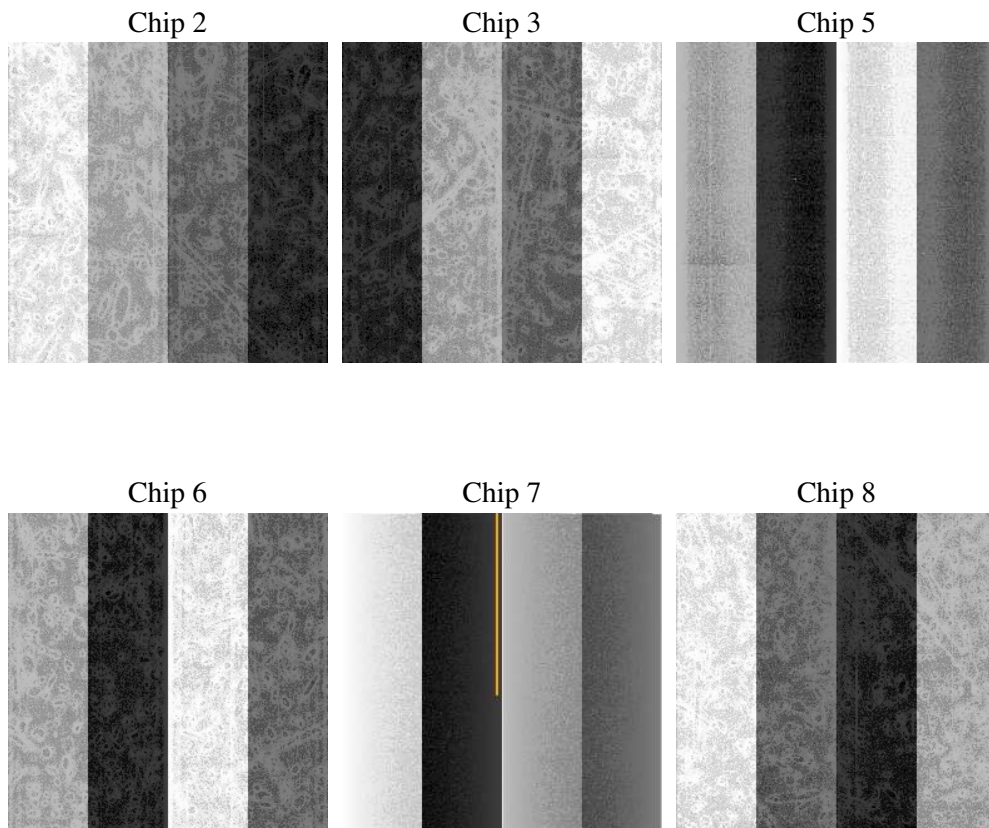
2 OBI

2.1 OBI

2.1.1 Images



2.1.2 Bias



2.1.3 Parameters

obi_num	0
ascdsver	7.6.8.1
caldbver	3.2.3
date	2006-08-29T15:56:57
revision	2

sched_exp_time	18763.408000
ontime	19364.980620295
ontime2	19254.78526029
ontime3	19261.267340288
ontime5	19364.980620295
ontime6	19261.267340288
ontime7	19364.980620295
ontime8	19270.990460292
l1events	1055878

2.1.4 Events

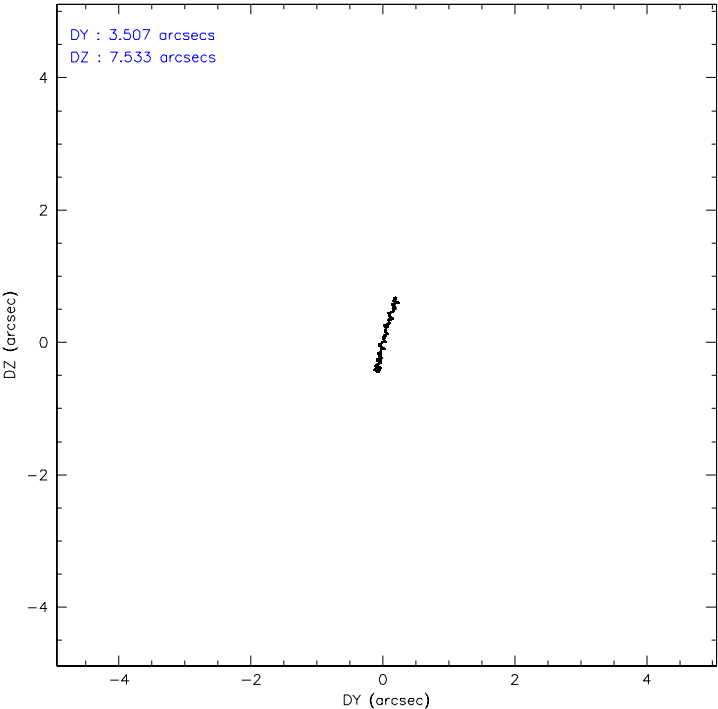
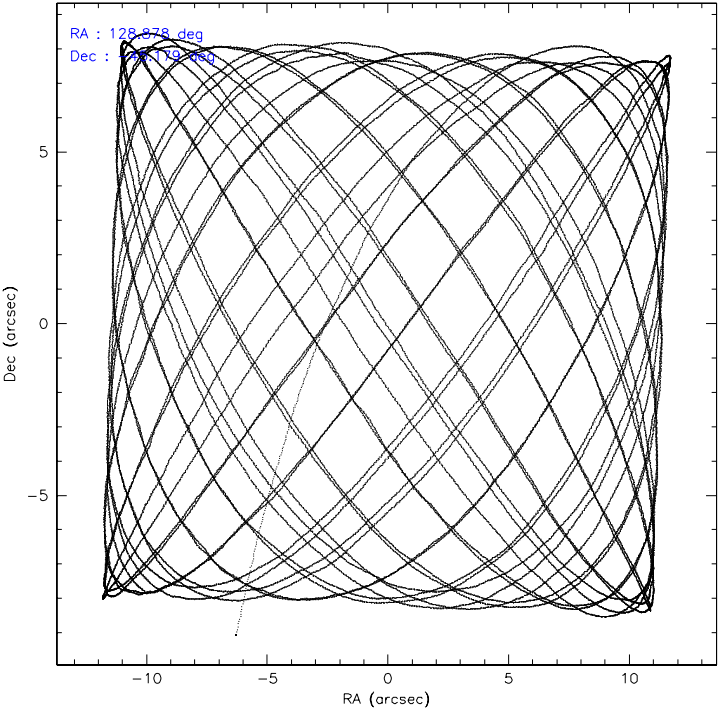
	ccd 2	ccd 3	ccd 5	ccd 6	ccd 7	ccd 8
level 1 events	124332	118115	153636	121322	396957	141516
rejected events	95797	86059	58864	91660	60916	93581
rejected %	77%	72%	38%	75%	15%	66%

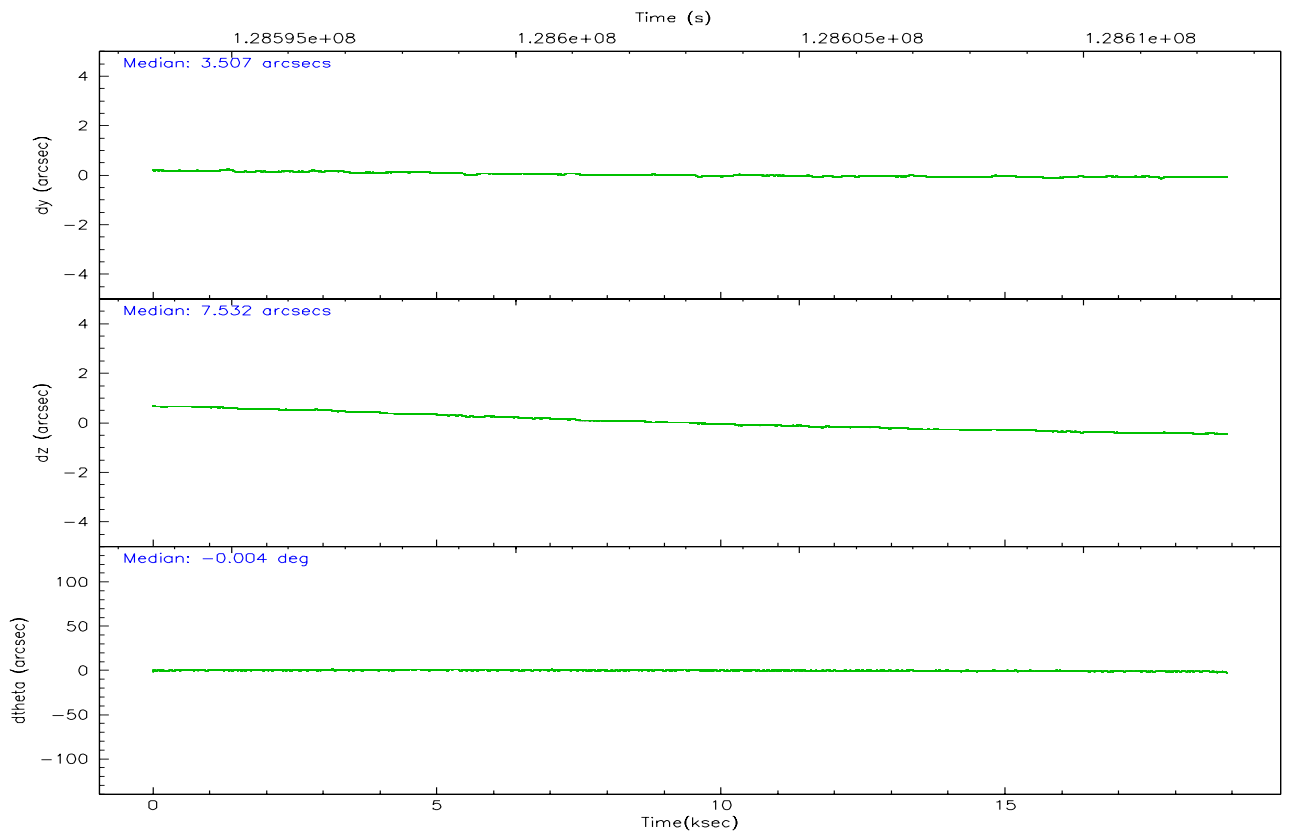
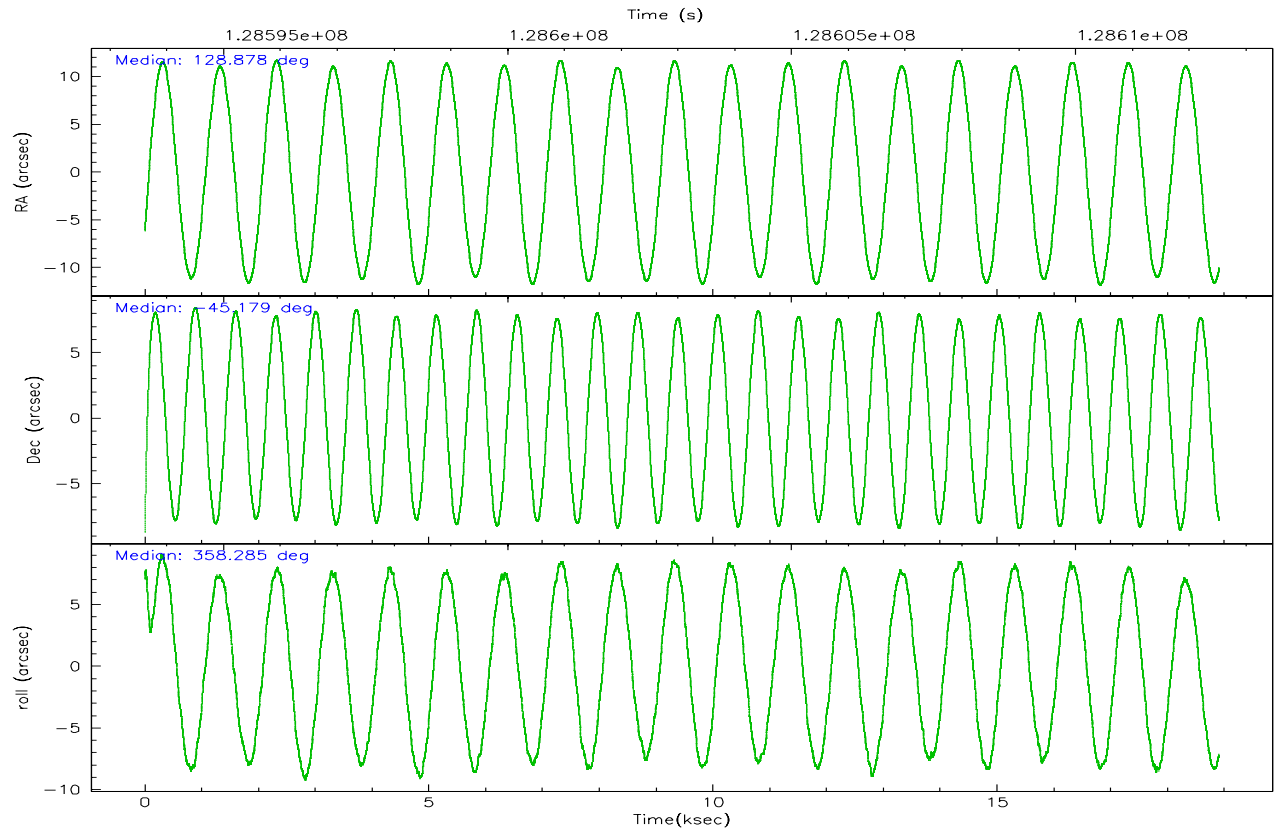
	ccd 2	ccd 3	ccd 5	ccd 6	ccd 7	ccd 8
grade 0 events	20357	23802	24995	21380	99361	25090
	16%	20%	16%	17%	25%	17%
grade 1 events	94	120	253	104	643	129
	0%	0%	0%	0%	0%	0%
grade 2 events	3747	3712	29218	3595	93634	7501
	3%	3%	19%	2%	23%	5%
grade 3 events	1453	1479	4305	1434	34294	4278
	1%	1%	2%	1%	8%	3%
grade 4 events	1470	1484	4214	1476	33542	3909
	1%	1%	2%	1%	8%	2%
grade 5 events	2474	2845	7378	3046	9958	4519
	1%	2%	4%	2%	2%	3%
grade 6 events	1803	1940	34167	2158	79194	7881
	1%	1%	22%	1%	19%	5%
grade 7 events	92934	82733	49106	88129	46331	88209
	74%	70%	31%	72%	11%	62%

2.2 Compared Parameters

Parameter	Planned	Actual	Parameter	Planned	Actual
Instrument	ACIS	ACIS	Obspar format version number	6	6
Detector	ACIS-235678	ACIS-235678	Obspar file type	PREDICTED	ACTUAL
Grating	NONE	NONE	Obspar update status	NONE	UPDATED
Data mode	FAINT	FAINT	On-chip summing requested	N	N
Observation mode	POINTING	POINTING	Subarray requested	NONE	NONE
Pointing RA	128.843548	128.8773953700211	Alternating exposures requested	N	N
Pointing Dec	-45.192511	-45.17929361170703	Primary exposure time	0.000000	3.2
Pointing Roll	358.112566	358.2932148526883			
SIM focus pos (mm)	-0.684267	-0.6828225247311905			
SIM defocus (mm)	0	0.001444936568705701			
SIM translation stage pos (mm)	-190.132523	-190.1400660498719			
SIM translation stage offset (mm)	0	0.00754346686406393			
Observation start time	128593765.184000	128592486.09437			
Observation start date	2002-01-28T08:28:21	2002-01-28T08:08:06			
Observation end time	128612528.184000	128612843.10769			
Observation end date	2002-01-28T13:41:04	2002-01-28T13:47:23			
Read mode	TIMED	TIMED			

2.3 Aspect



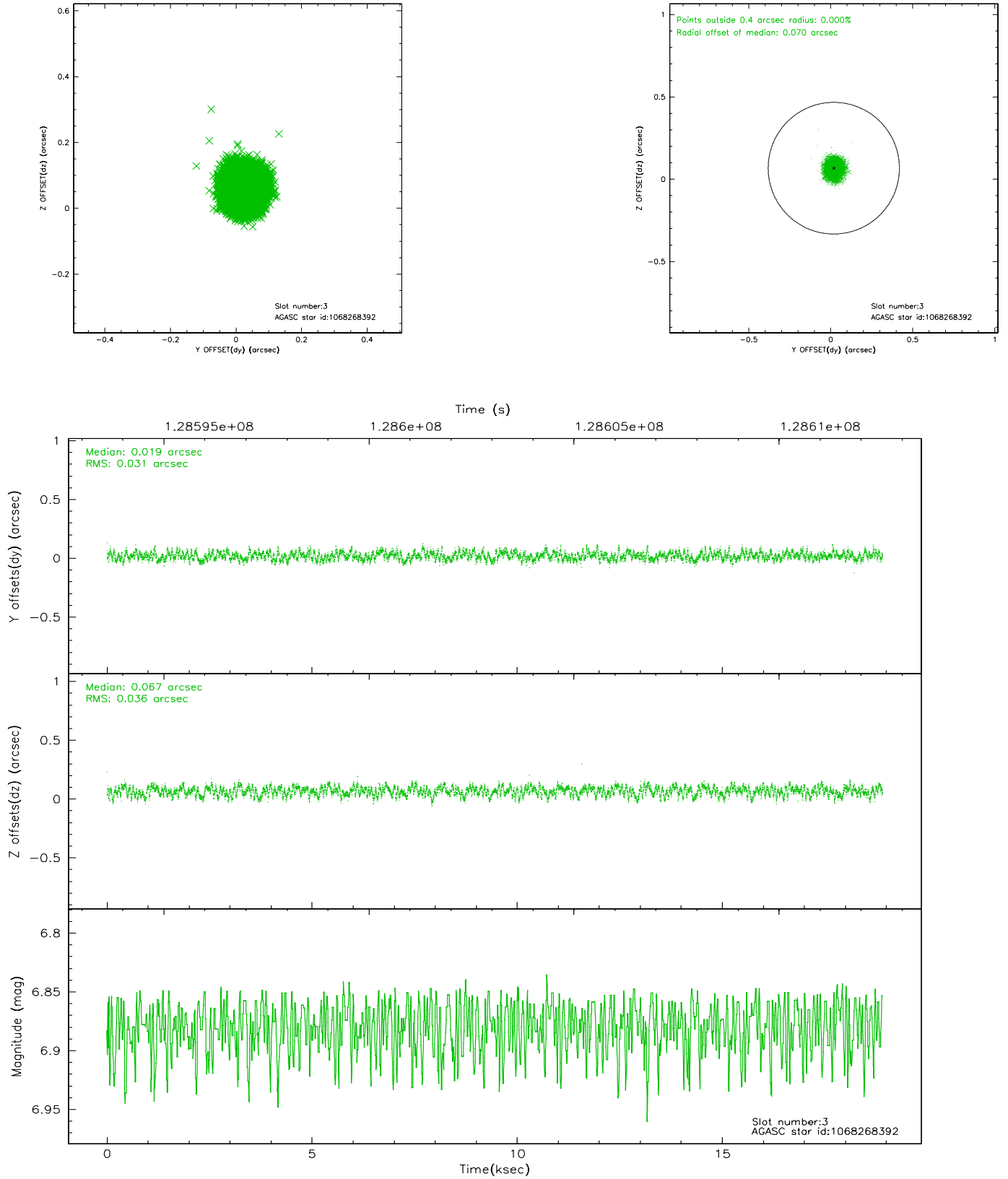


Slot Statistics

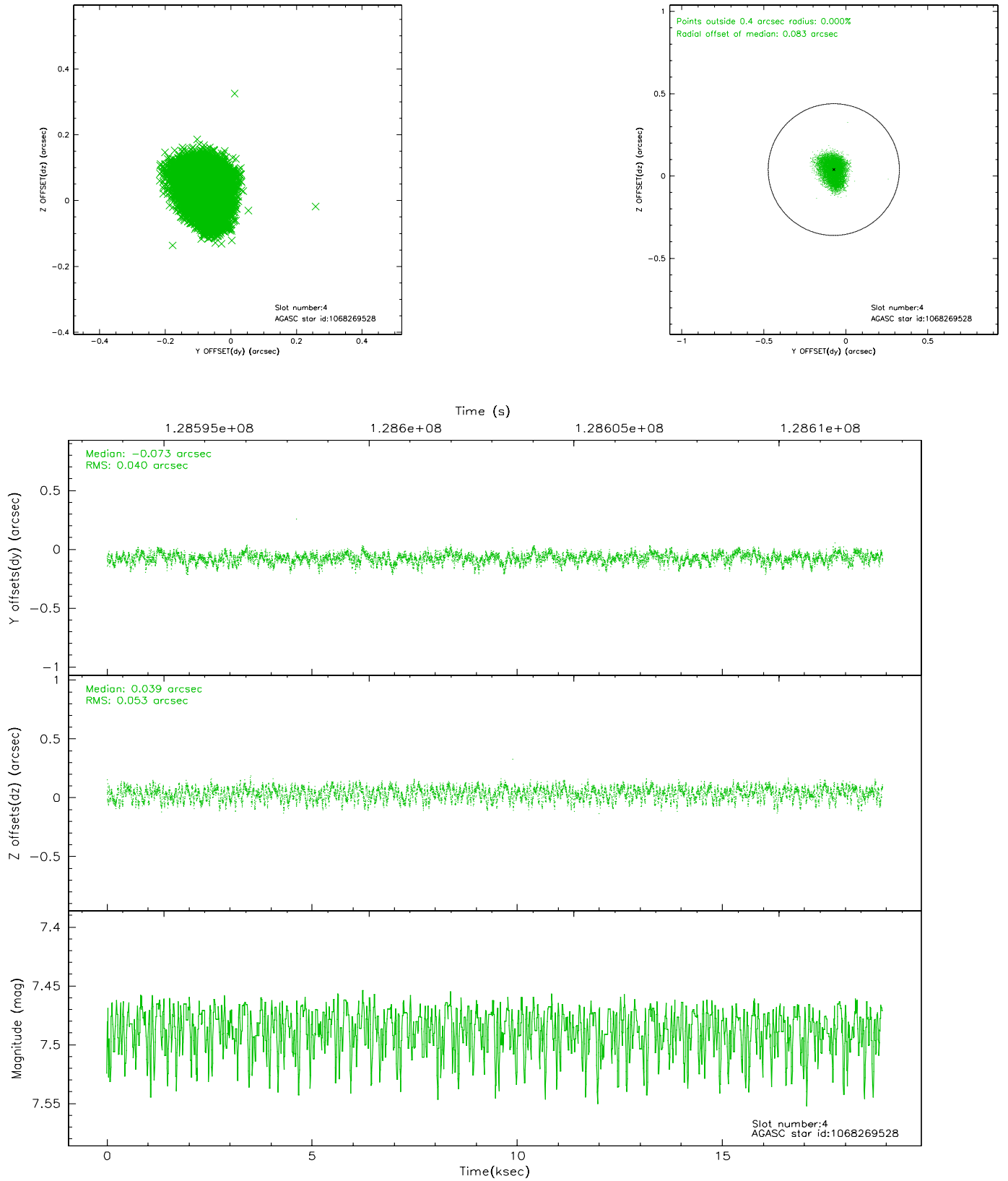
slot	status	id	mag	n_pts	med_dy	med_dz	dr1	dr2	ra	dec	mean_y	mean_z
0	FID	ACIS-S-1	7.19	4612	0.033	-0.012	0.016	0.031	0.000000	0.000000	939.85	-1724.41
1	FID	ACIS-S-4	7.20	4611	-0.065	-0.005	0.013	0.020	0.000000	0.000000	2157.30	179.52
2	FID	ACIS-S-5	7.24	4611	0.005	0.028	0.008	0.013	0.000000	0.000000	-1808.75	173.43
3	GUIDE	1068268392	6.88	9224	0.019	0.067	0.052	0.080	128.257754	-45.752904	-1404.25	-2070.25
4	GUIDE	1068269528	7.49	9224	-0.073	0.039	0.073	0.113	127.902889	-45.784783	-2289.98	-2223.17
5	GUIDE	1068376536	7.65	9225	-0.026	0.184	0.055	0.091	129.556408	-45.593502	1842.03	-1391.32
6	GUIDE	1005871784	8.01	9222	0.030	-0.143	0.093	0.139	128.533947	-44.544833	-871.27	2302.33
7	GUIDE	1005861048	8.42	9219	0.046	-0.145	0.090	0.139	128.669106	-44.528323	-527.08	2374.64

2.4 Star Slots

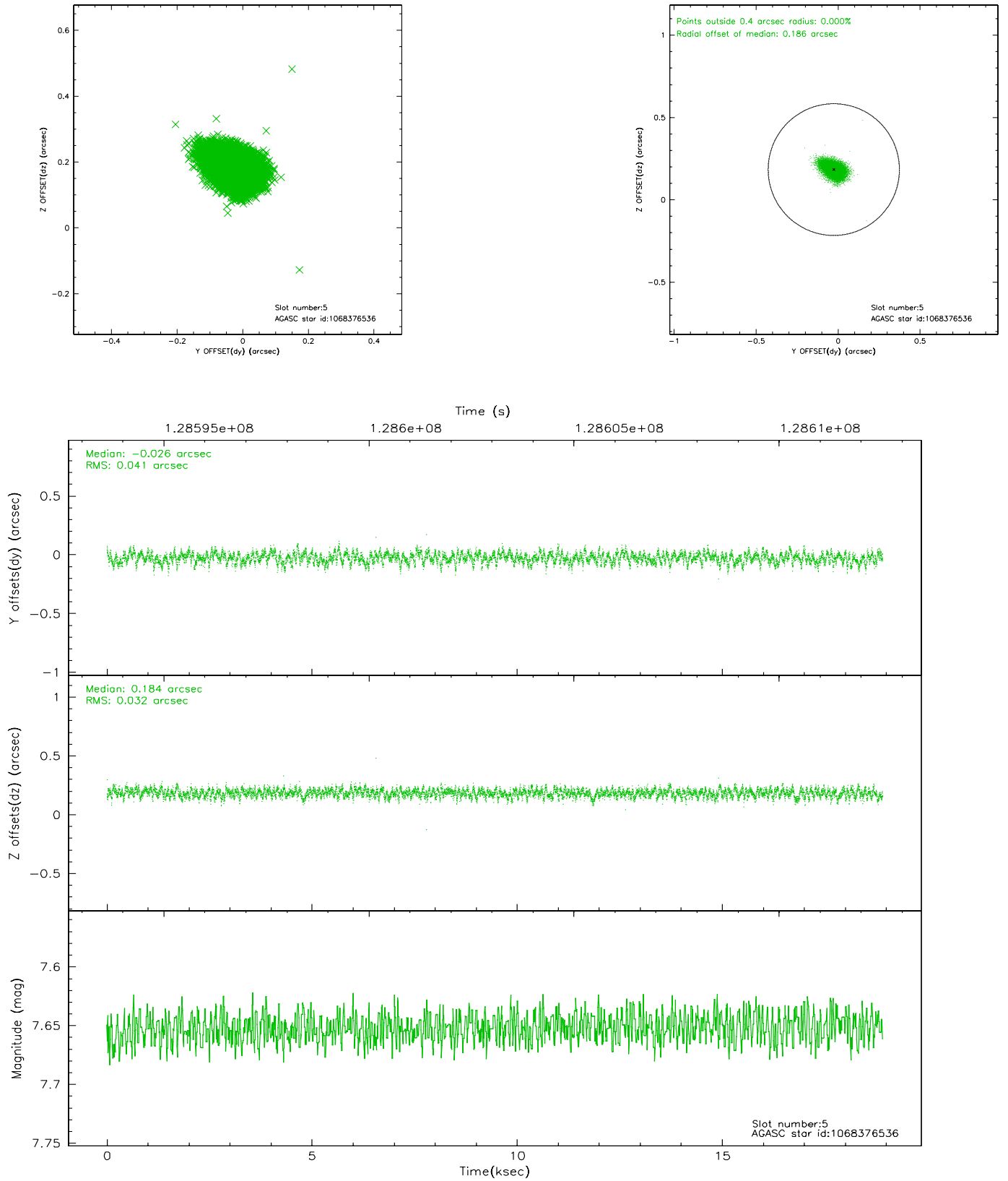
2.4.1 Slot 3



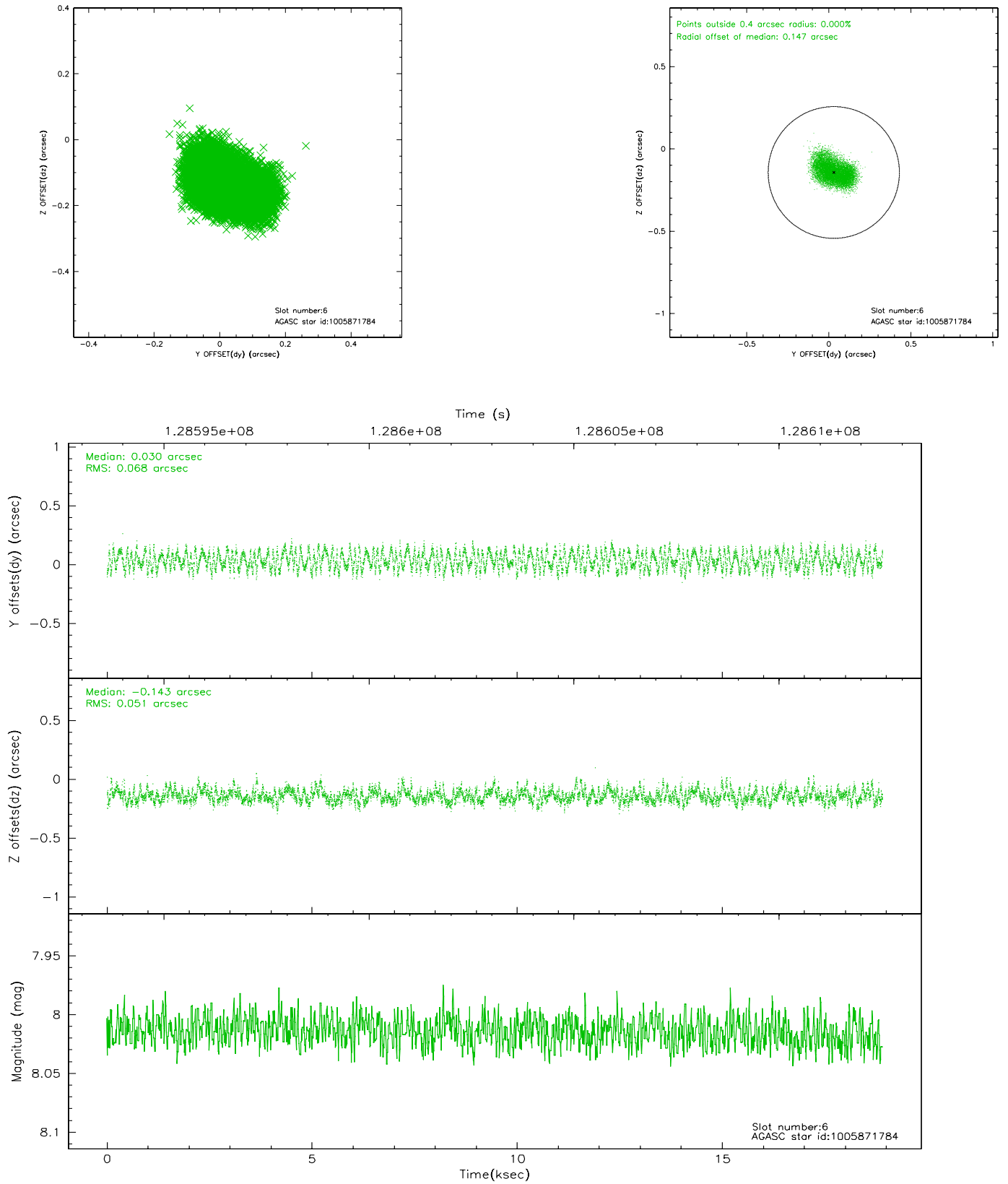
2.4.2 Slot 4



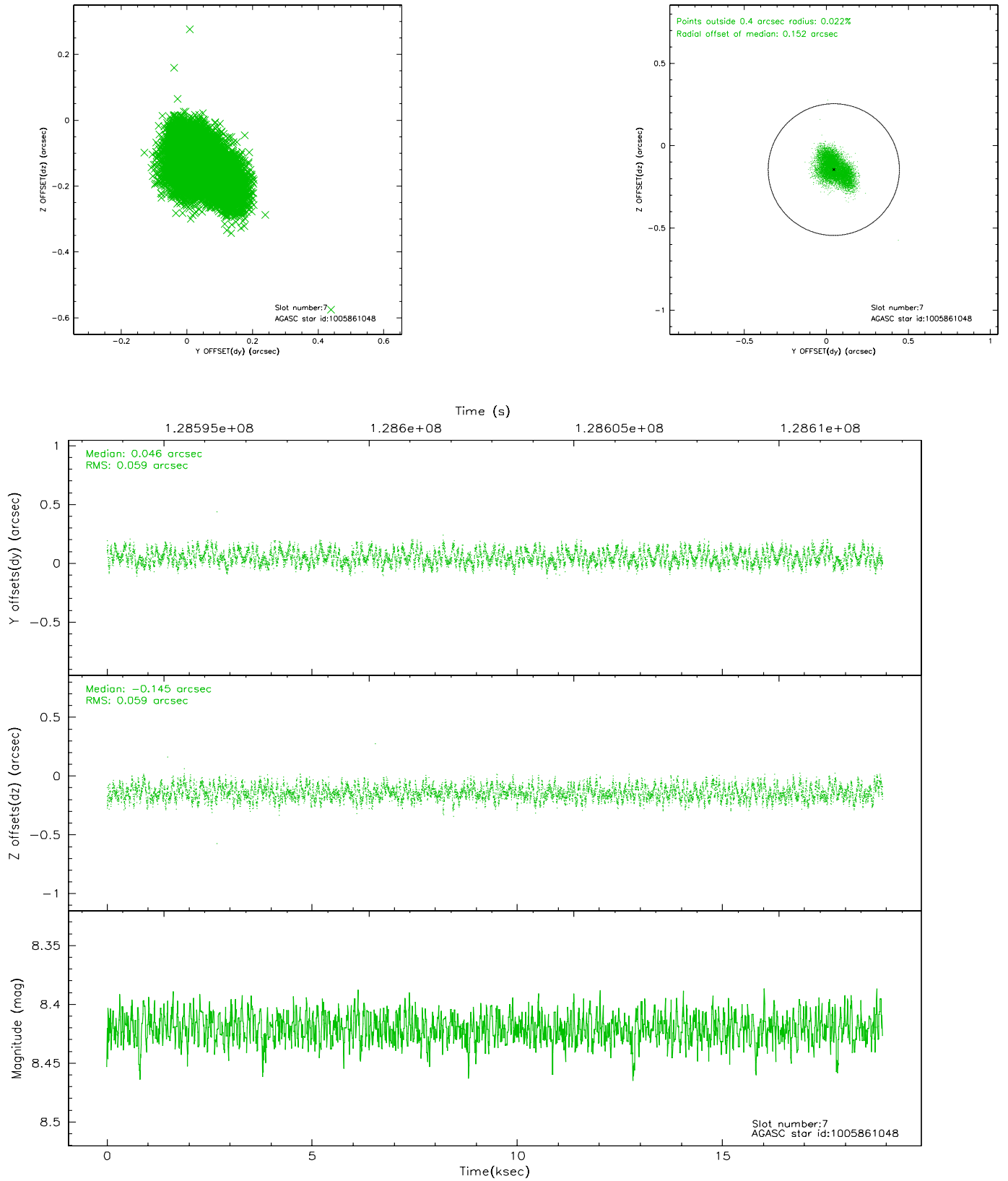
2.4.3 Slot 5



2.4.4 Slot 6

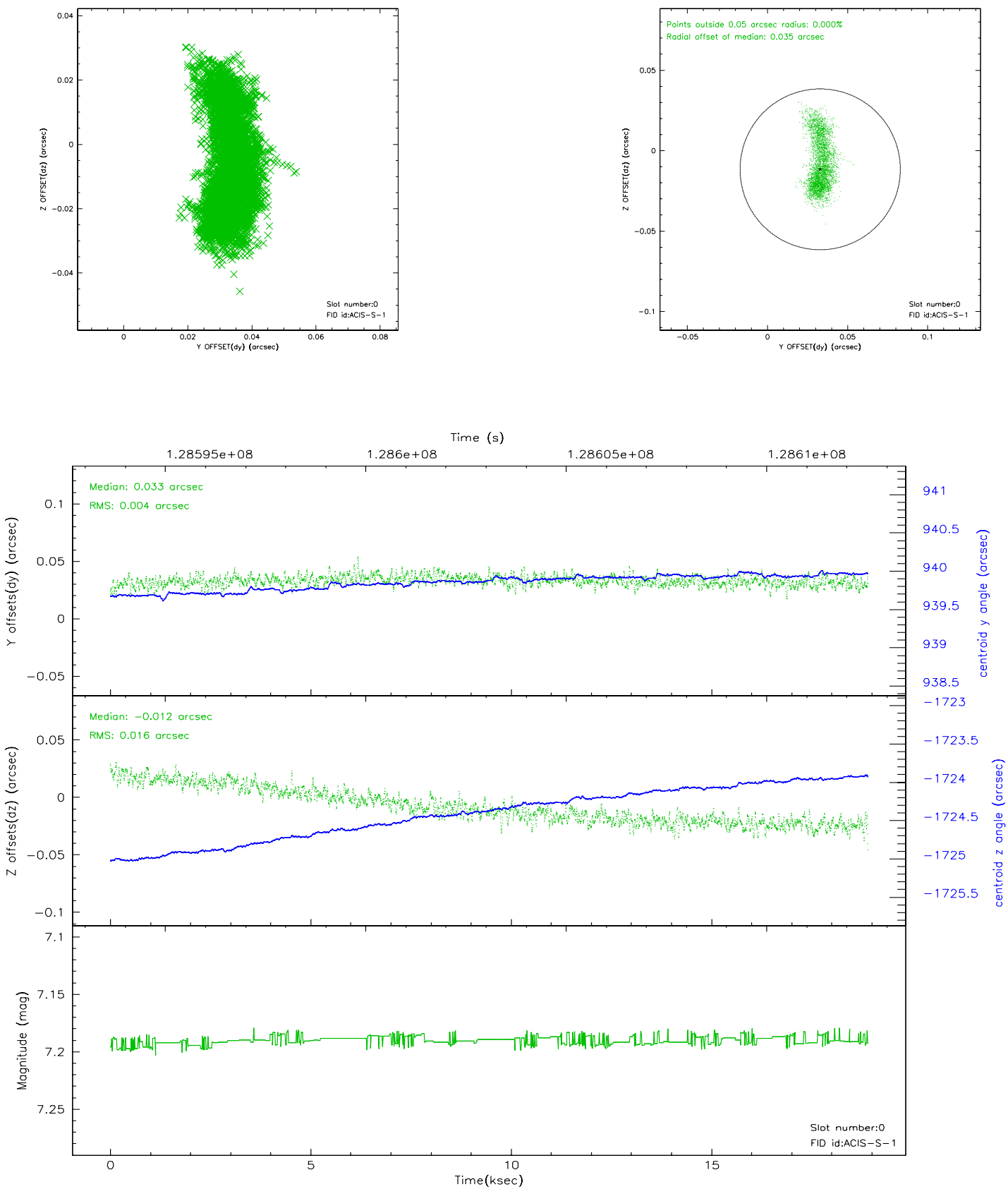


2.4.5 Slot 7

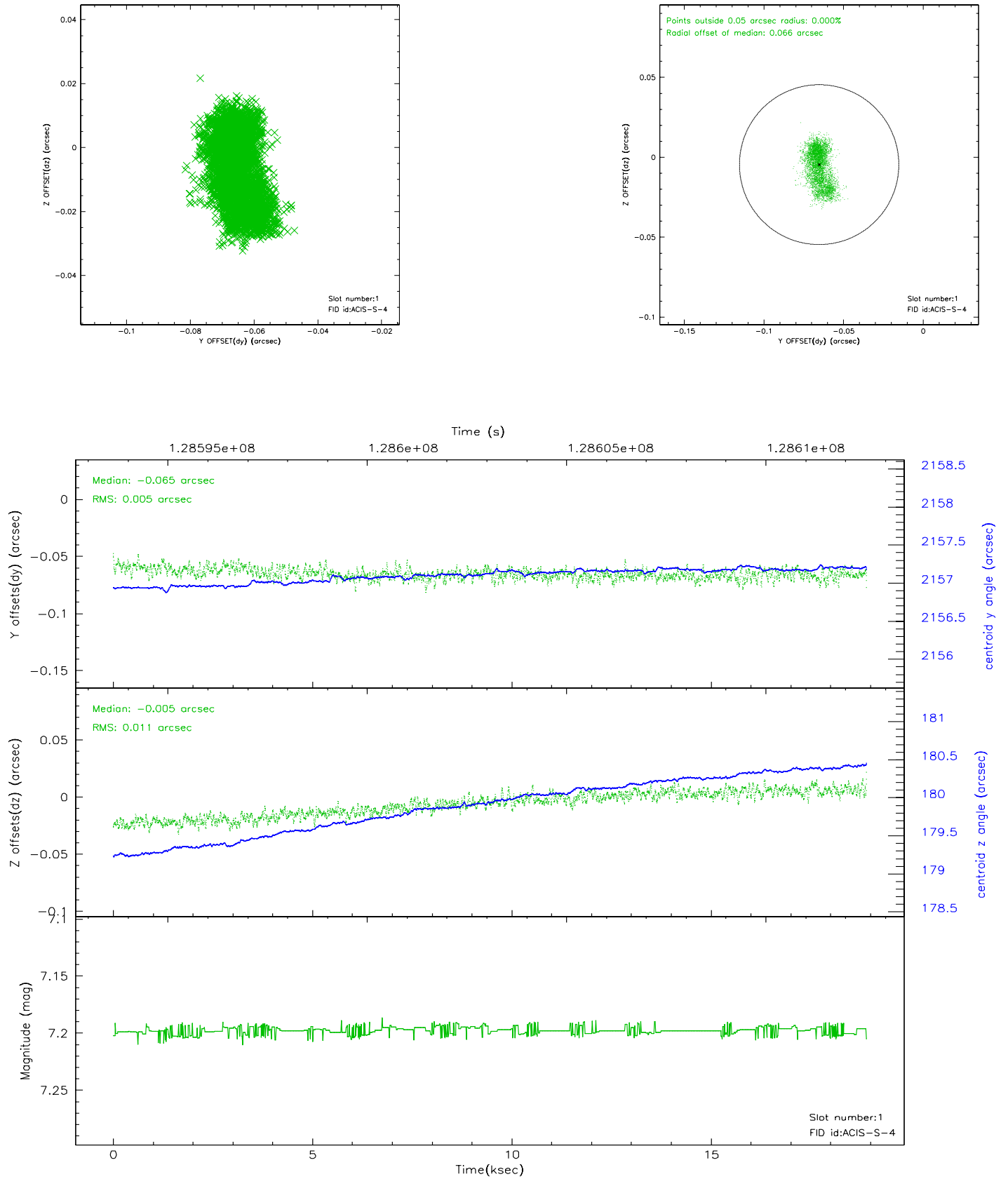


2.5 FID Slots

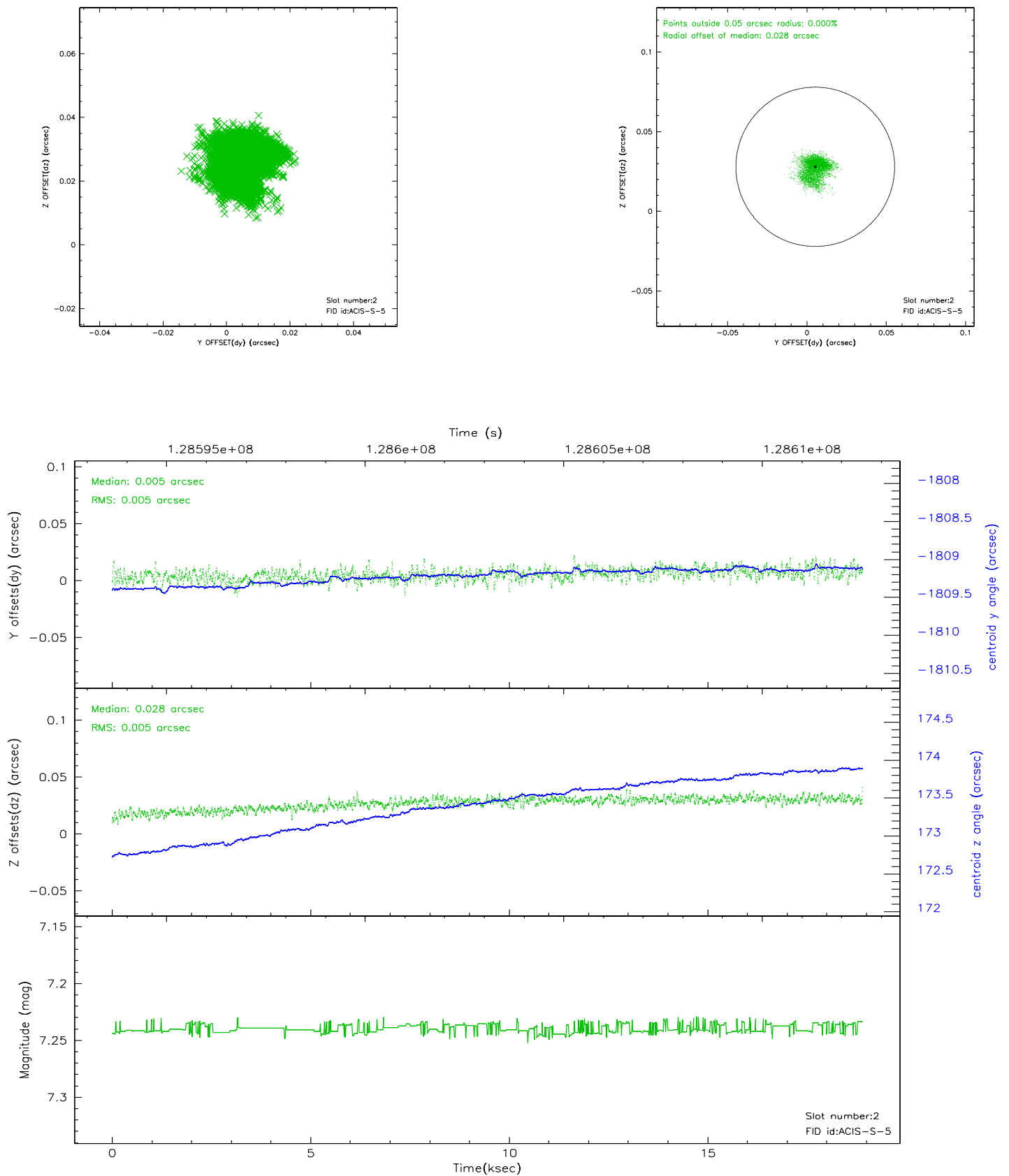
2.5.1 Slot 0



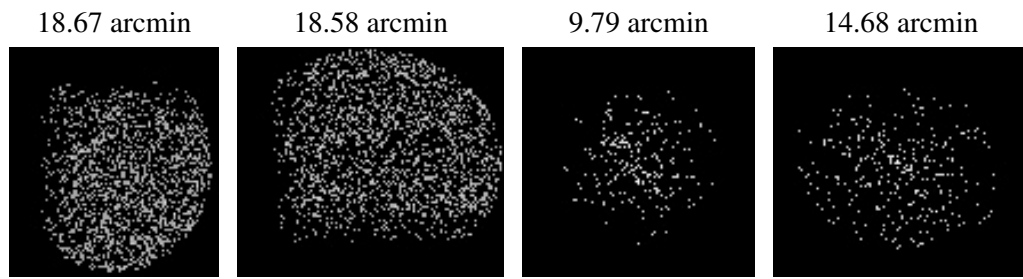
2.5.2 Slot 1



2.5.3 Slot 2



3 Point Sources



A Summary

A.1 Status

V&V Scientist	Beth Sundheim
V&V Date (YYYY-MM-DD)	2006.08.29
V&V Edition	1
V&V Disposition and Status	OK
V&V Charge Time	18.902

A.2 Comments