

V&V Reference Report

L2 ASCDS Version : 8.4.5

Observation 2688 - L2 Version 3
Chandra X-Ray Center

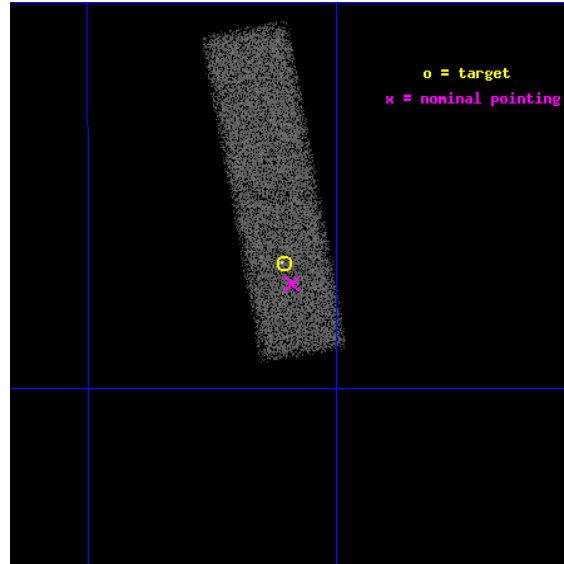
L2 Processing Date : Sep 25 2012

Contents

1	Front	2
2	OBI	3
2.1	OBI	3
2.1.1	Images	3
2.1.2	Bias	3
2.1.3	Parameters	4
2.1.4	Events	4
2.2	Compared Parameters	5
2.3	Aspect	6
2.4	Star Slots	9
2.4.1	Slot 3	9
2.4.2	Slot 4	10
2.4.3	Slot 5	11
2.4.4	Slot 6	12
2.4.5	Slot 7	13
2.5	FID Slots	14
2.5.1	Slot 0	14
2.5.2	Slot 1	15
2.5.3	Slot 2	16
A	Summary	17
A.1	Status	17
A.2	Comments	17

1 Front

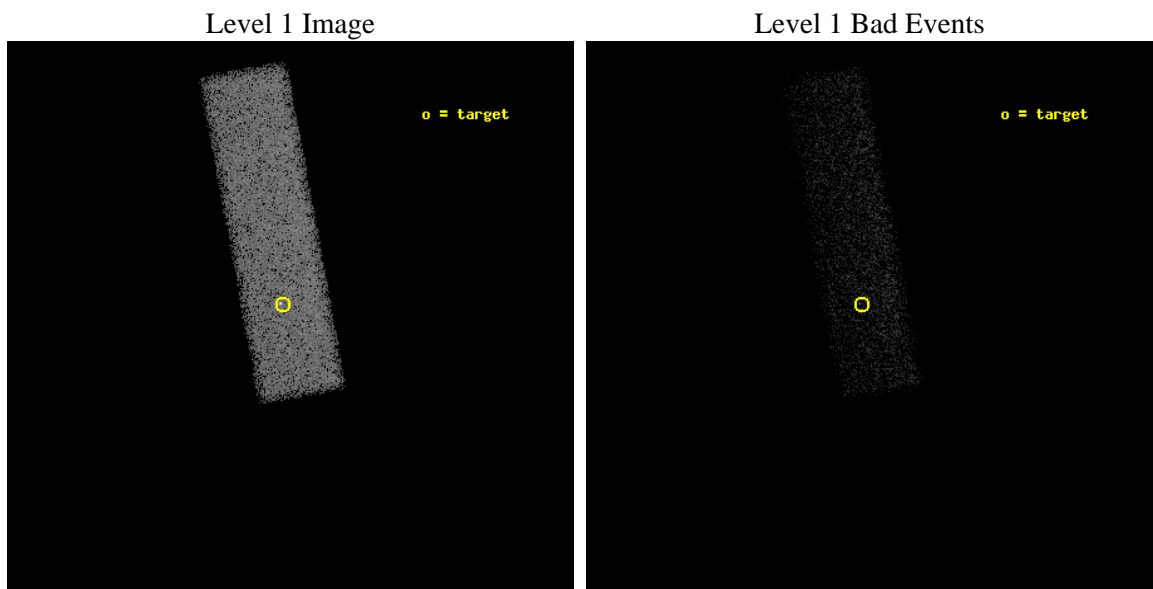
seq_num	400168	Sequence number
obs_id	2688	Observation id
title	CHANDRA OBSERVATIONS OF LONG-DURATION TRANSIENTS AND PERSISTENT LOW-MASS X-RAY BINARIES IN QUIESCENCE	Proposal title
observer	Dr. Rudy Wijnands	Principal investigator
object	MXB 1659-298	Source name
dtcycle	0	
cycle	P	events from which exps? Prim/Second/Both
ra_targ	255.52625	Observer's specified target RA [deg]
dec_targ	-29.945833	Observer's specified target Dec [deg]
ra_nom	255.52228370073	Nominal RA [deg]
dec_nom	-29.954936242855	Nominal Dec [deg]
roll_nom	259.48455244088	Nominal Roll [deg]
revision	3	Processing version of data
ontime	19815.158916101	Sum of GTIs [s]
livetime	18848.243998955	Livetime [s]
ontime7	19815.158916101	Sum of GTIs [s]
l2events	25356	Number of level 2 events



2 OBI

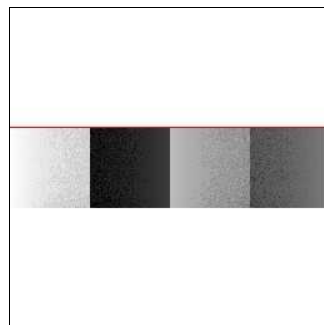
2.1 OBI

2.1.1 Images



2.1.2 Bias

Chip 7



2.1.3 Parameters

obi_num	0	Obi number	sched_exp_time	19000.000000	[s] Scheduled observation exposure time
ascdsver	8.4.5	Processing system revision	ontime	19815.158916101	Sum of GTIs [s]
caldsver	4.5.1.1	 	ontime7	19815.158916101	Sum of GTIs [s]
date	2012-09-25T04:43:07	Date and time of file creation	l1events	47560	Number of level 1 events
revision	3	Processing version of data			

2.1.4 Events

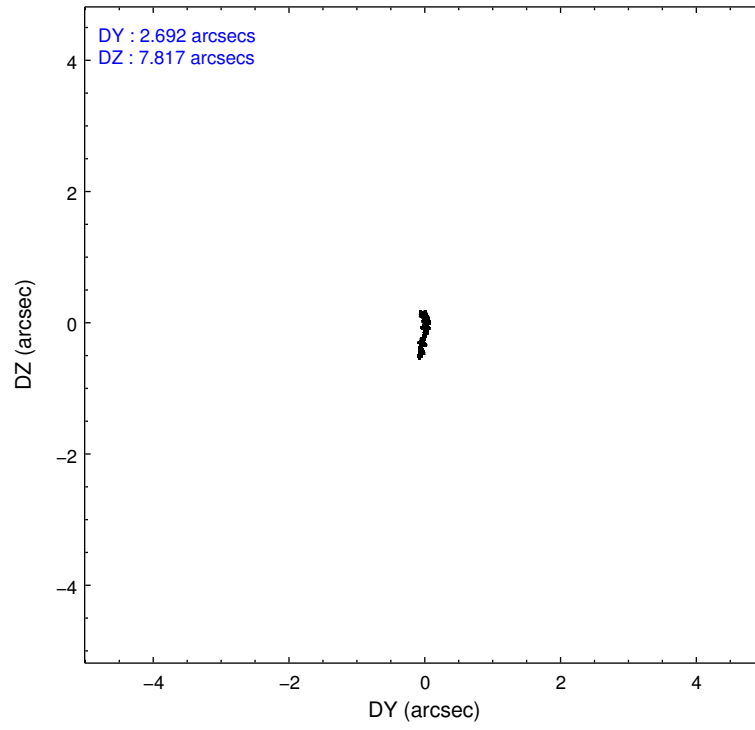
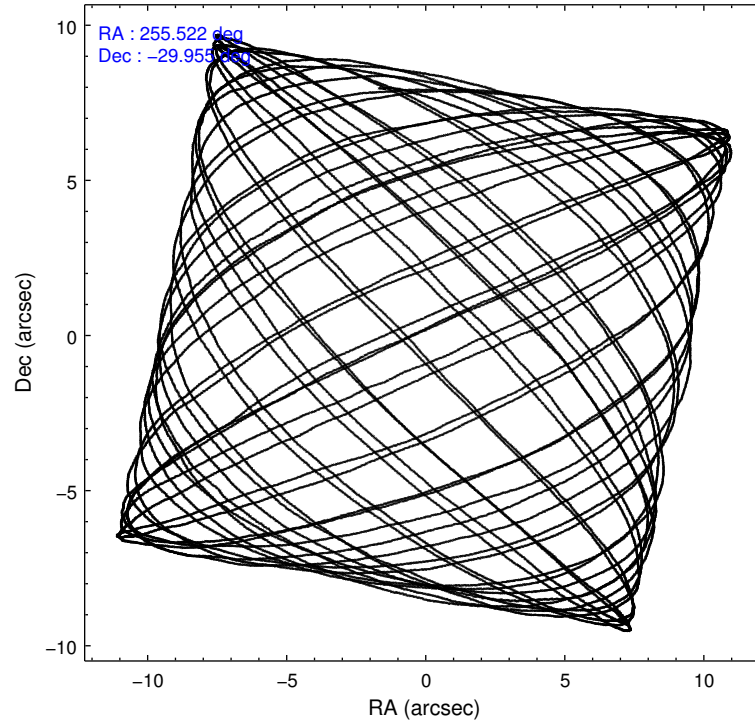
	ccd 7
level 1 events	47560
rejected events	21544
rejected %	45%

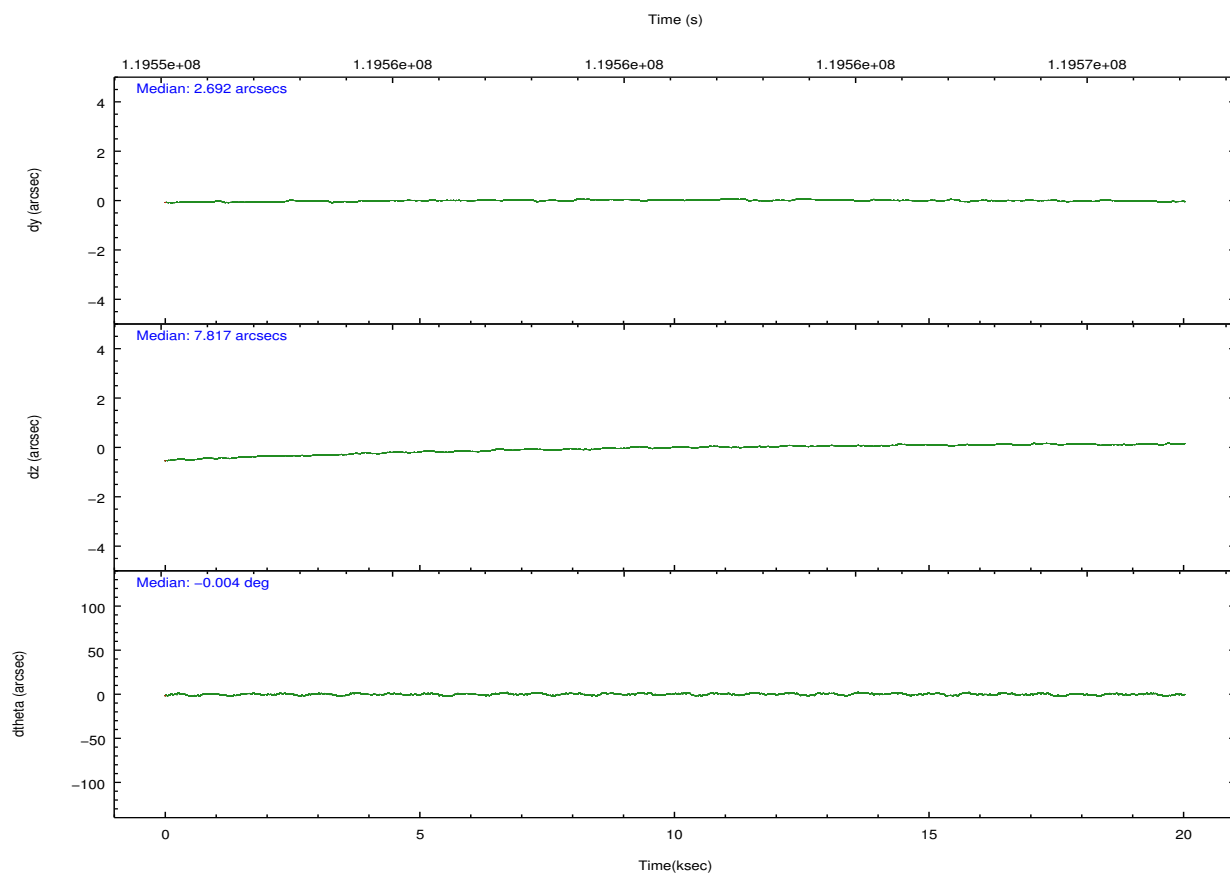
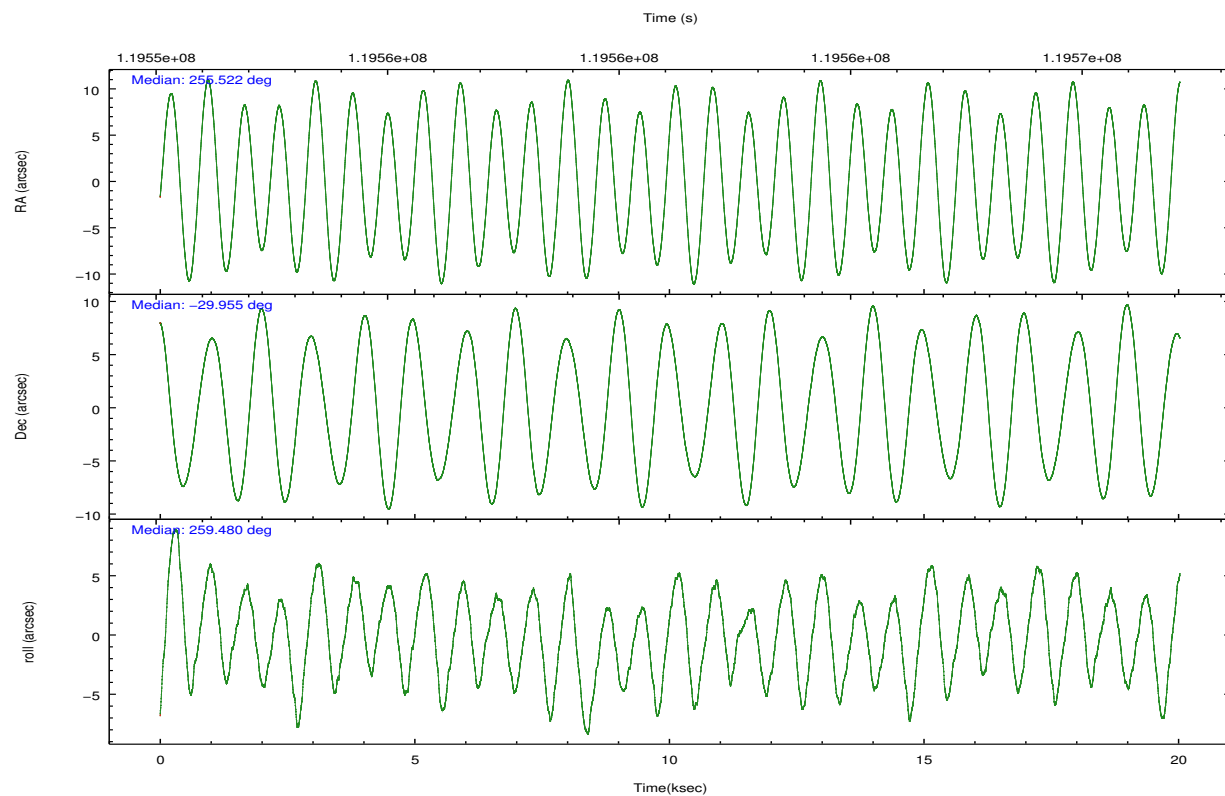
	ccd 7
grade 0 events	3689
	7%
grade 1 events	45
	0%
grade 2 events	5279
	11%
grade 3 events	2876
	6%
grade 4 events	2768
	5%
grade 5 events	3835
	8%
grade 6 events	11405
	23%
grade 7 events	17663
	37%

2.2 Compared Parameters

Parameter	Planned	Actual	Parameter	Planned	Actual
Instrument	ACIS	ACIS	Obspar format version number	7	7
Detector	ACIS-7	ACIS-7	Obspar file type	PREDICTED	ACTUAL
Grating	NONE	NONE	Obspar update status	NONE	UPDATED
Data mode	FAINT	FAINT	Number of optional ACIS chips dropped	0	0
Observation mode	POINTING	POINTING	On-chip summing requested	N	N
[deg] Pointing RA	255.511440	255.522283700725	Subarray requested	CUSTOM	1/4
[deg] Pointing Dec	-29.929340	-29.95493624285453	Subarray start row	385	385
[deg] Pointing Roll	259.322512	259.4845524408818	Subarray row count	256	256
[mm] SIM focus pos	-0.684267	-0.6828225247311905	Alternating exposures requested	N	N
[mm] SIM defocus	0	0.001444936568705701	[s] Primary exposure time	0.000000	0.8
[mm] SIM translation stage pos	-190.132523	-190.1425803651734			
[mm] SIM translation stage offset	0	0.01005778216563158			
[s] Observation start time (MET)	119552116.184000	119550734.20756			
Observation start date	2001-10-15T16:54:12	2001-10-15T16:32:14			
[s] Observation end time (MET)	119571116.184000	119571909.6834			
Observation end date	2001-10-15T22:10:52	2001-10-15T22:25:09			
Read mode	TIMED	TIMED			

2.3 Aspect



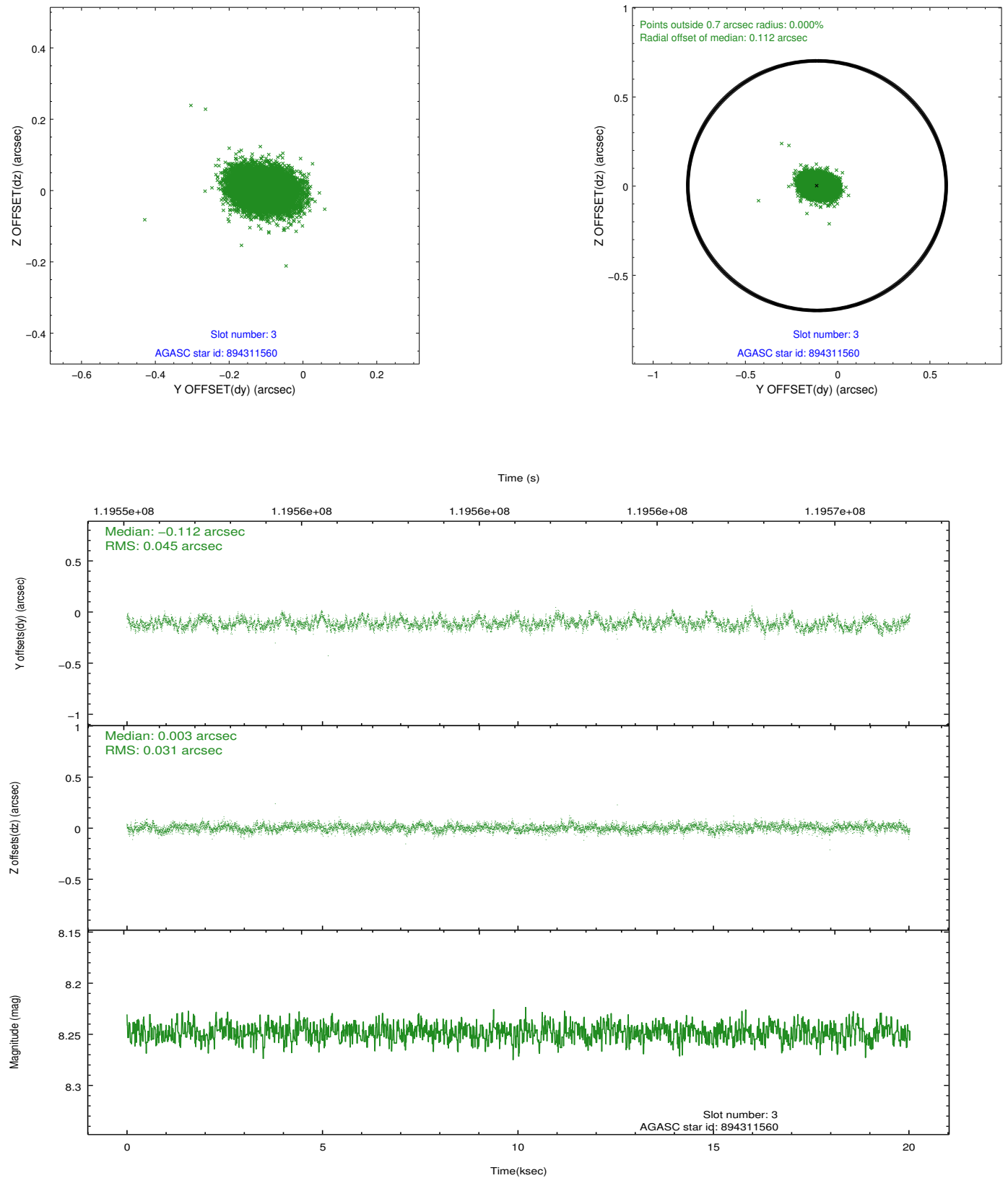


Slot Statistics

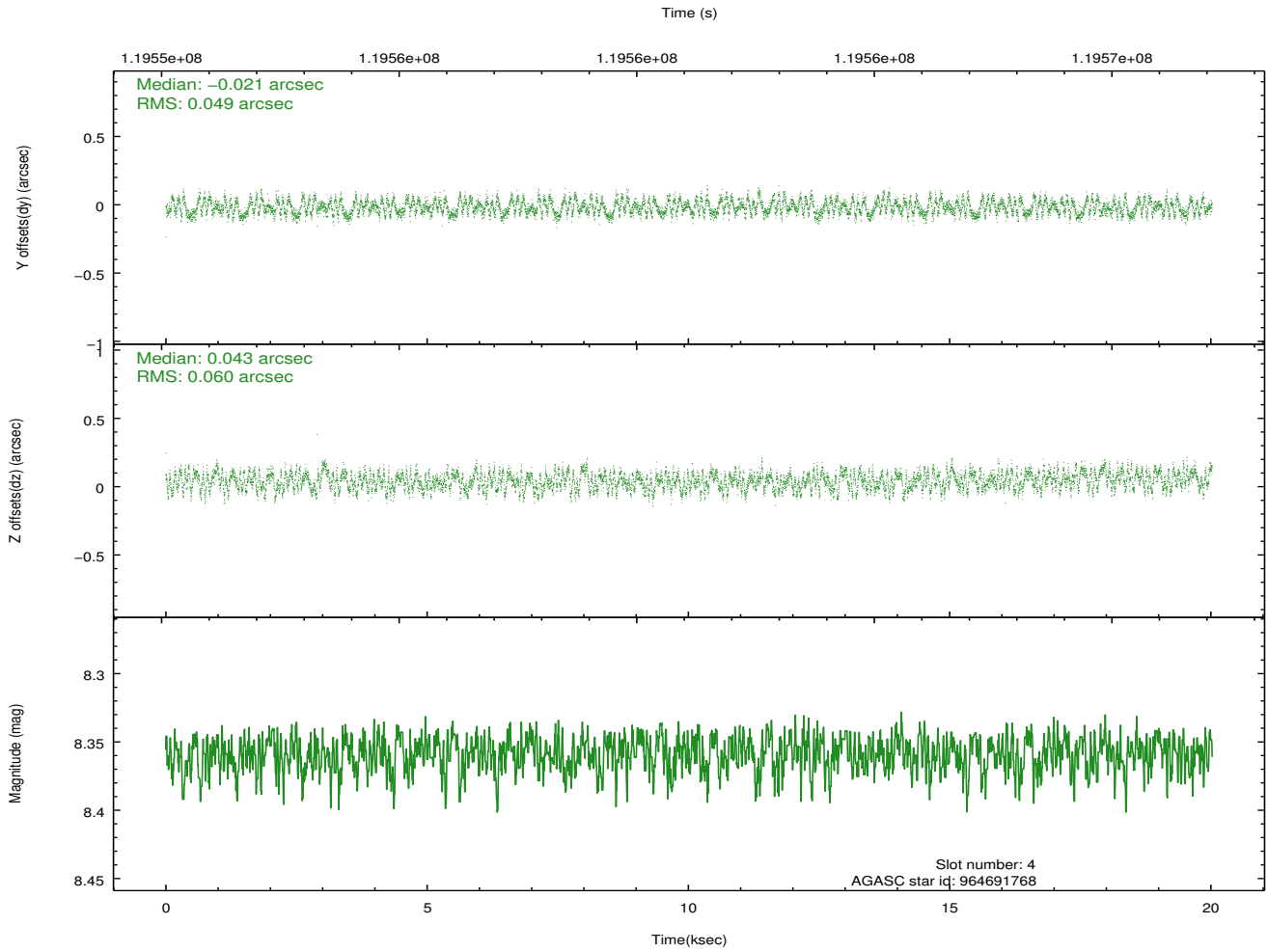
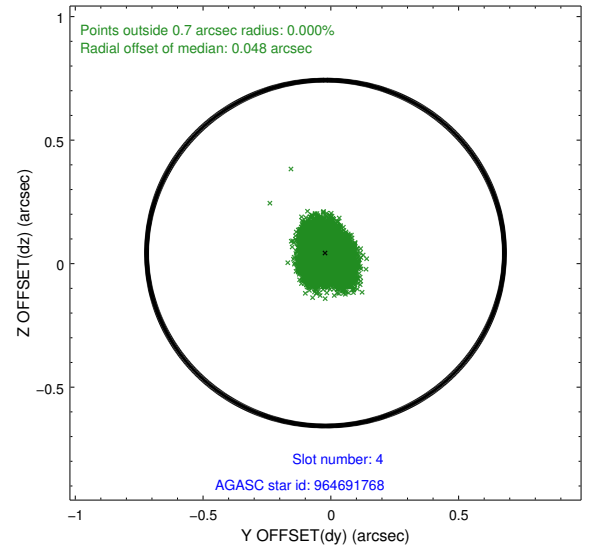
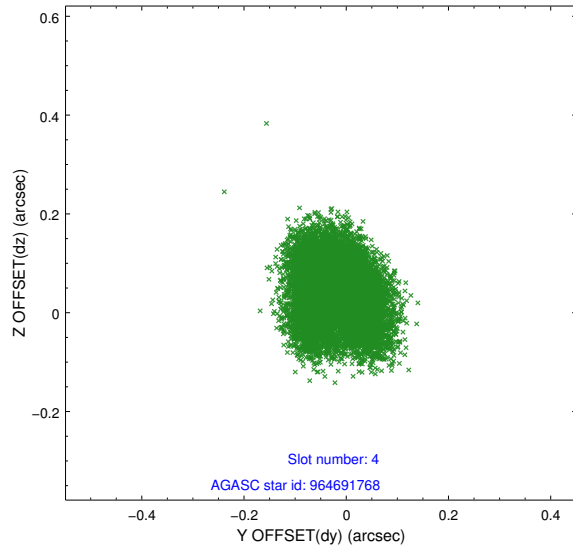
slot	status	id	mag	n_pts	med_dy	med_dz	dr1	dr2	ra	dec	mean_y	mean_z
0	FID	ACIS-S-2	7.11	4884	-0.001	0.004	0.014	0.025	0.000000	0.000000	-755.34	-1728.88
1	FID	ACIS-S-4	7.19	4885	-0.054	-0.000	0.014	0.035	0.000000	0.000000	2157.82	179.39
2	FID	ACIS-S-5	7.23	4885	0.023	0.007	0.012	0.024	0.000000	0.000000	-1807.90	173.31
3	GUIDE	894311560	8.25	9764	-0.112	0.003	0.058	0.094	255.968048	-29.561250	-1565.17	1160.37
4	GUIDE	964691768	8.36	9767	-0.021	0.043	0.084	0.128	256.279938	-30.028521	-86.05	2421.96
5	GUIDE	894191616	9.47	9762	-0.270	-0.070	0.098	0.158	254.985496	-29.335021	-1793.79	-2017.38
6	GUIDE	964702672	9.51	9766	0.248	-0.210	0.106	0.172	254.750357	-30.472308	2365.76	-1956.87
7	GUIDE	964691944	9.45	9697	0.154	0.235	0.092	0.156	255.940849	-30.671472	2381.23	1802.81

2.4 Star Slots

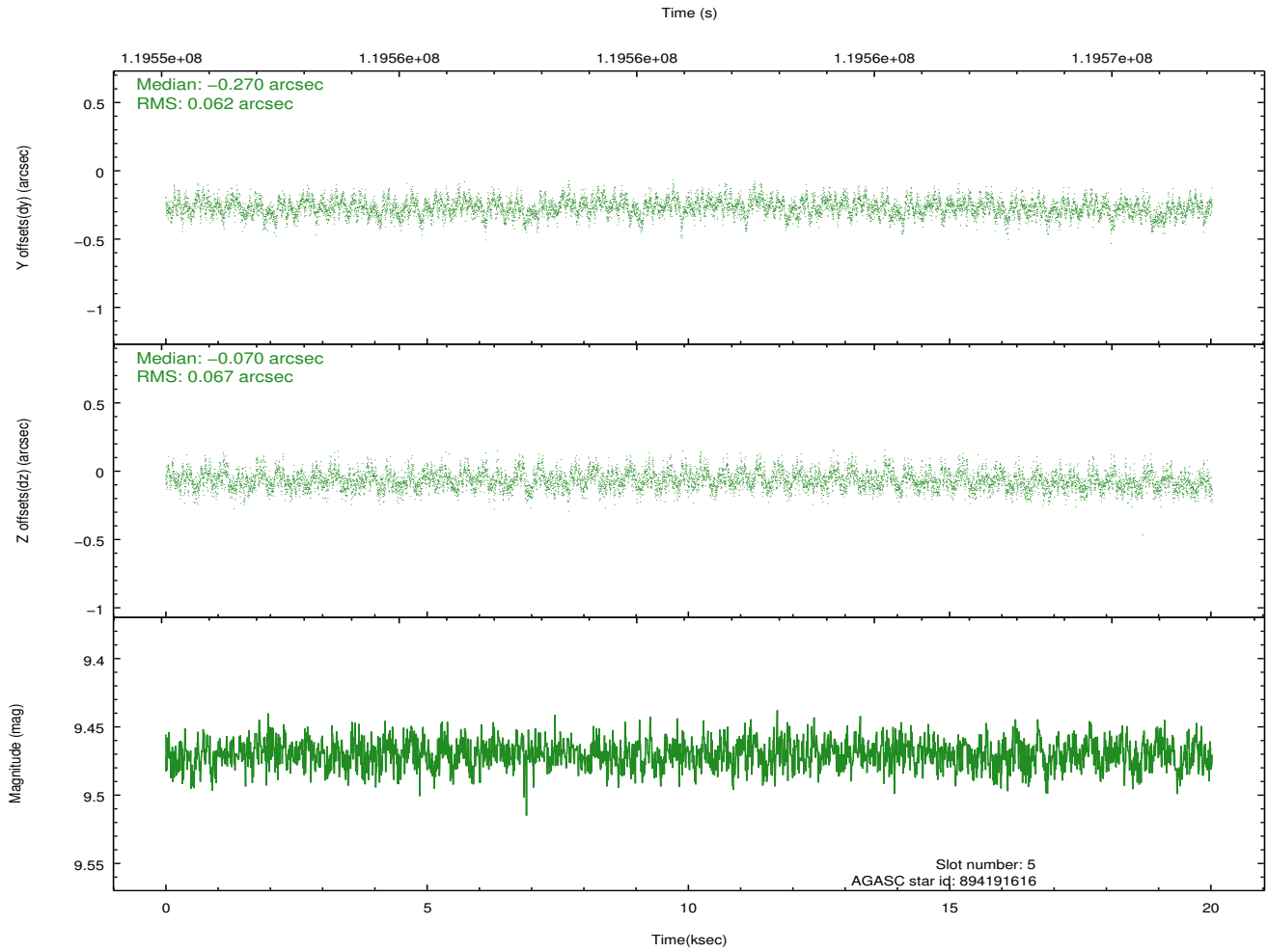
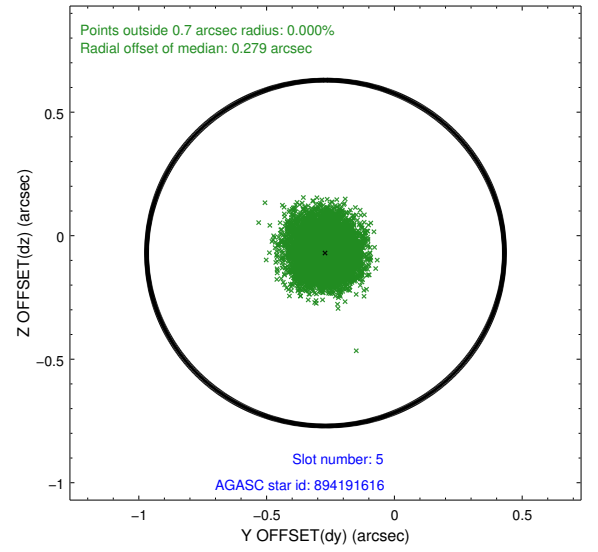
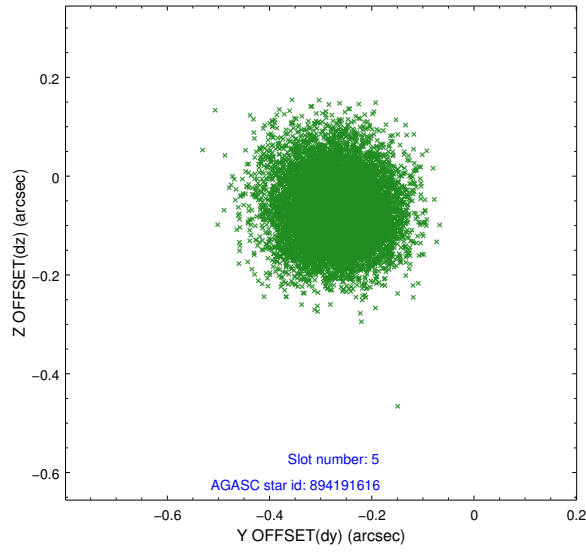
2.4.1 Slot 3



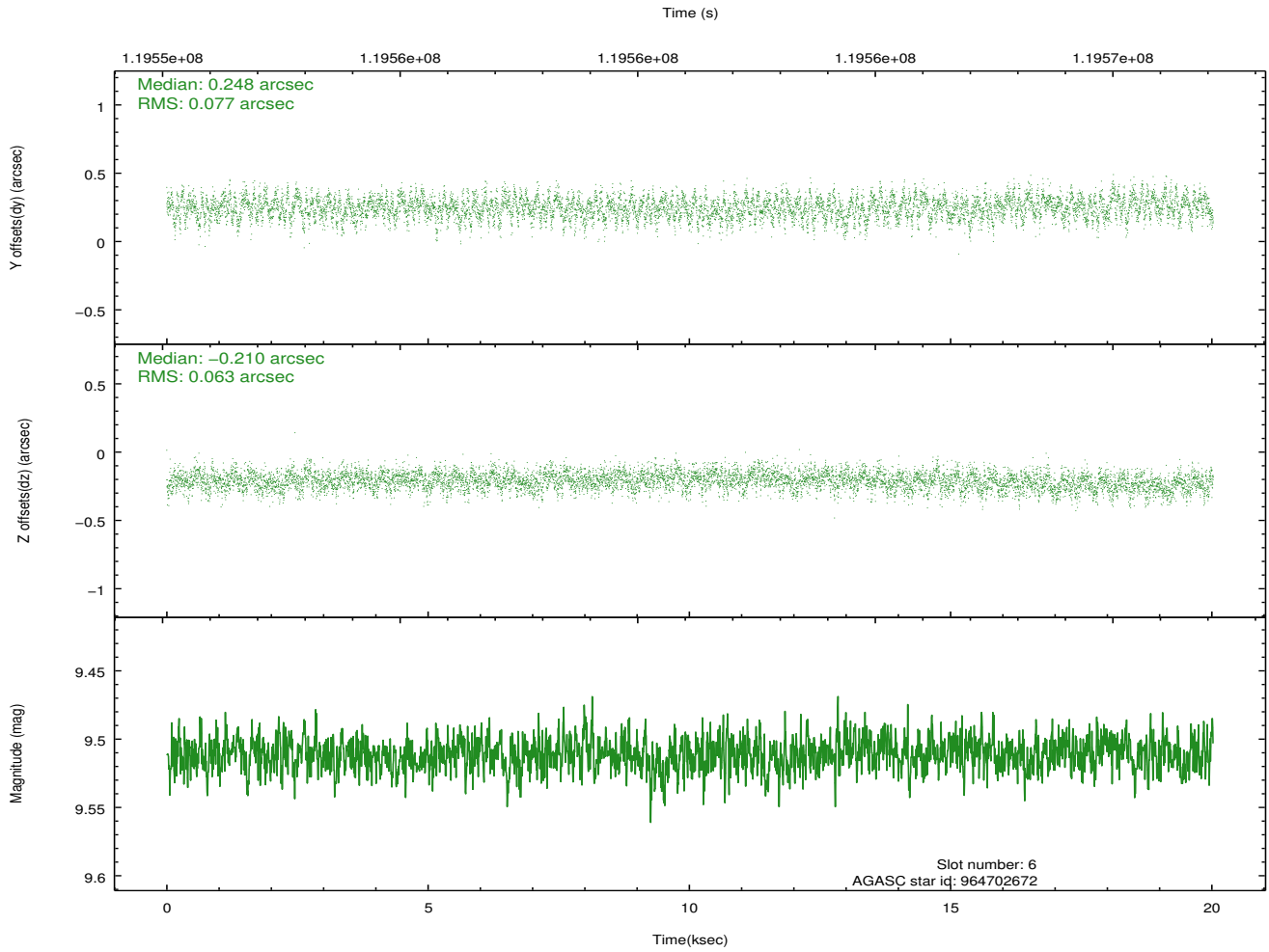
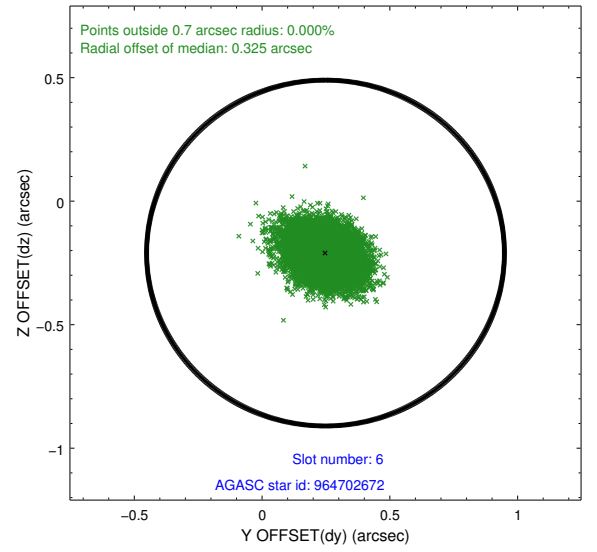
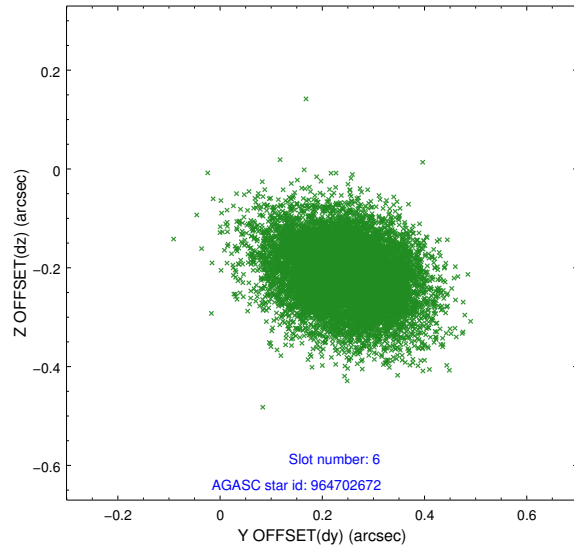
2.4.2 Slot 4



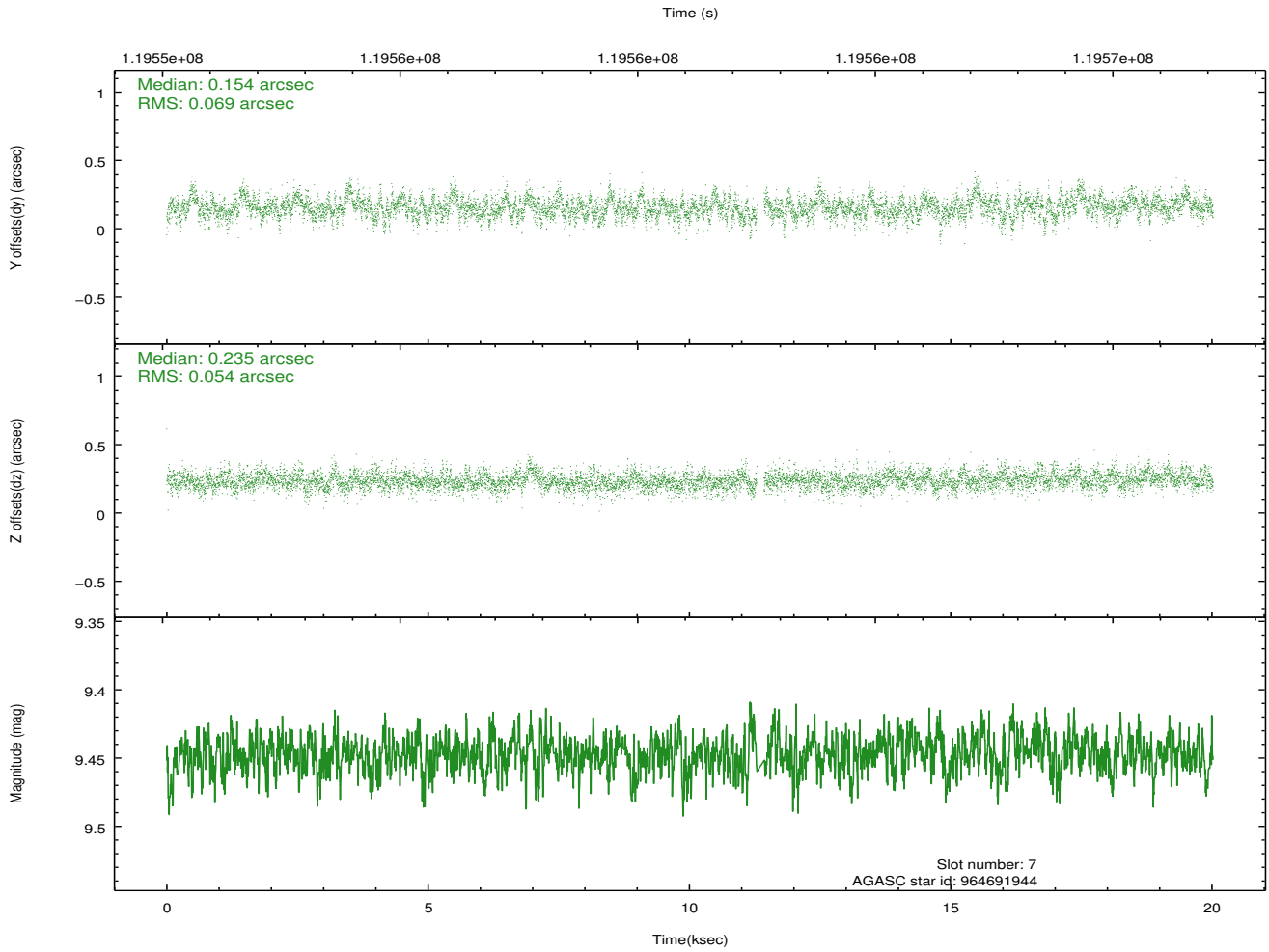
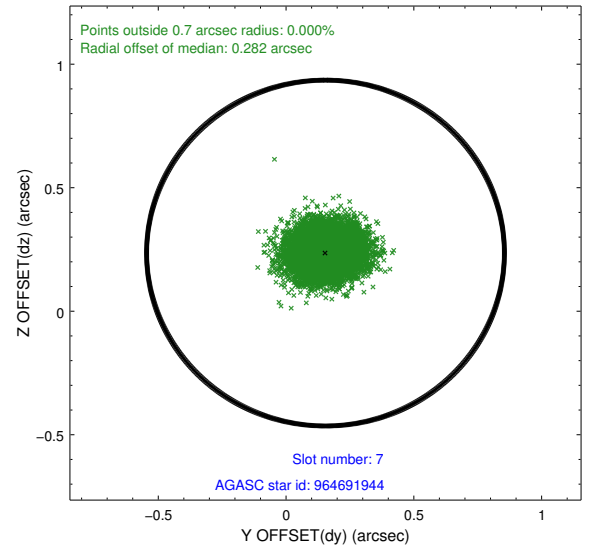
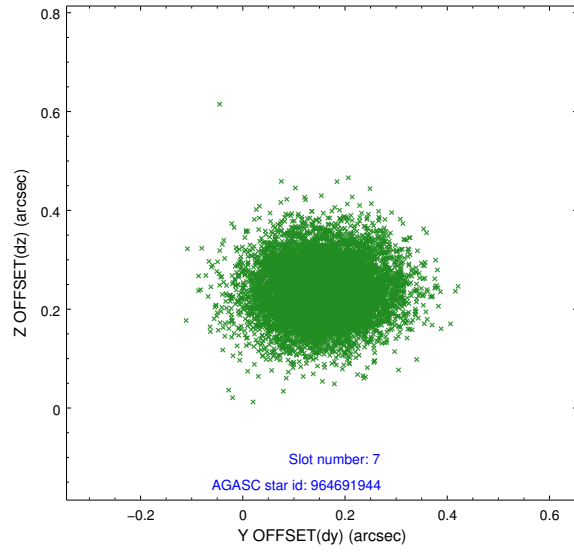
2.4.3 Slot 5



2.4.4 Slot 6

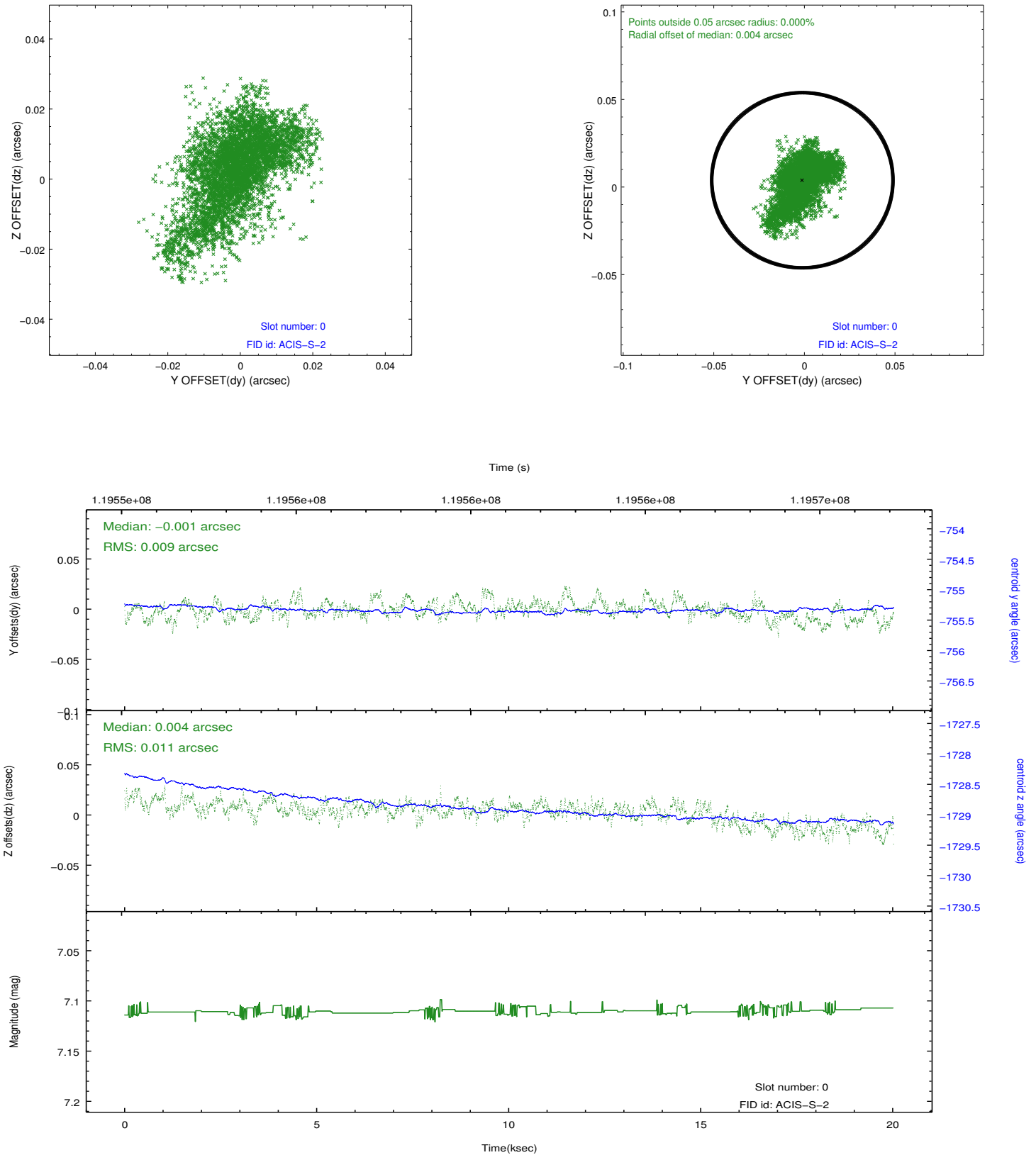


2.4.5 Slot 7

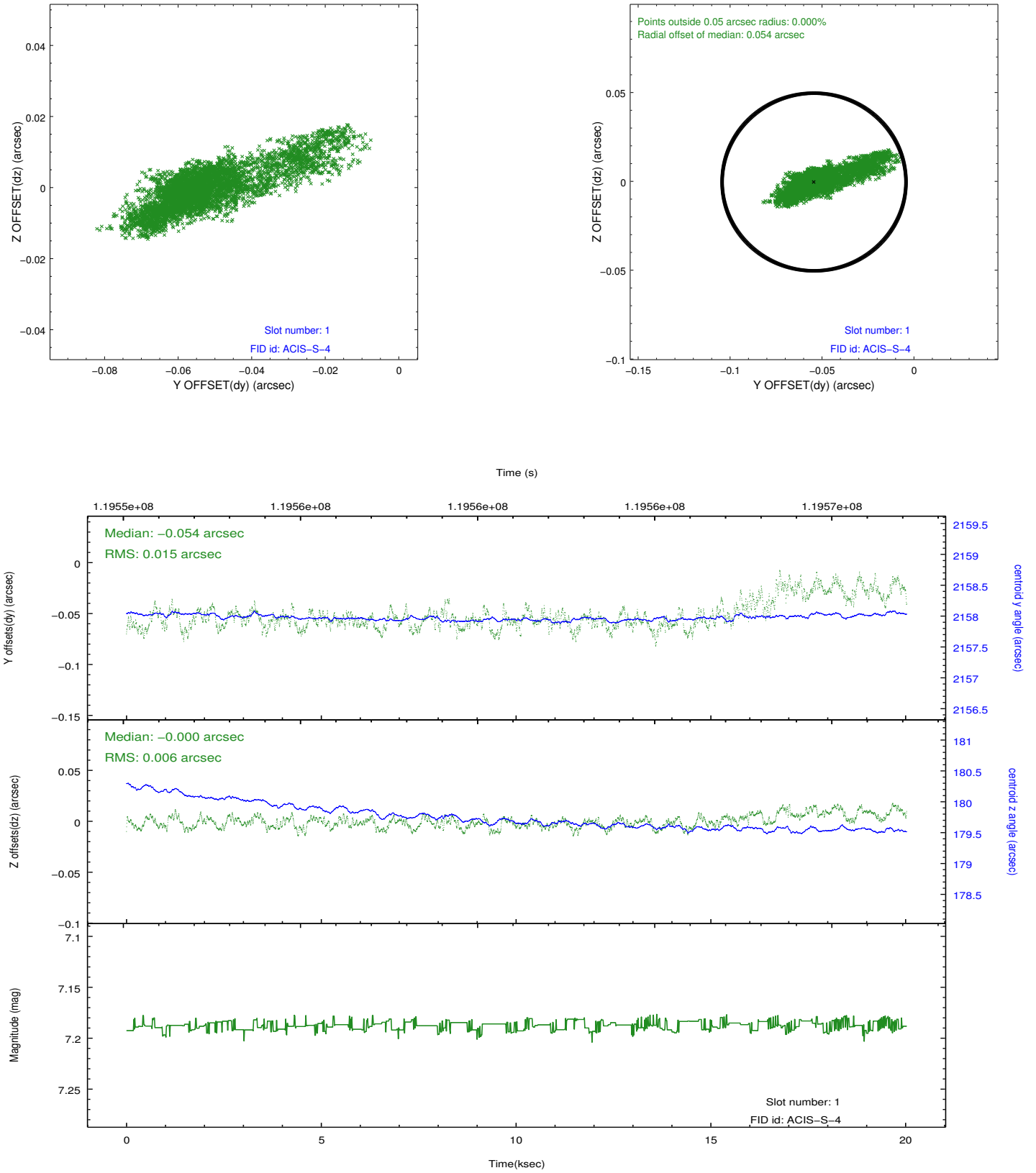


2.5 FID Slots

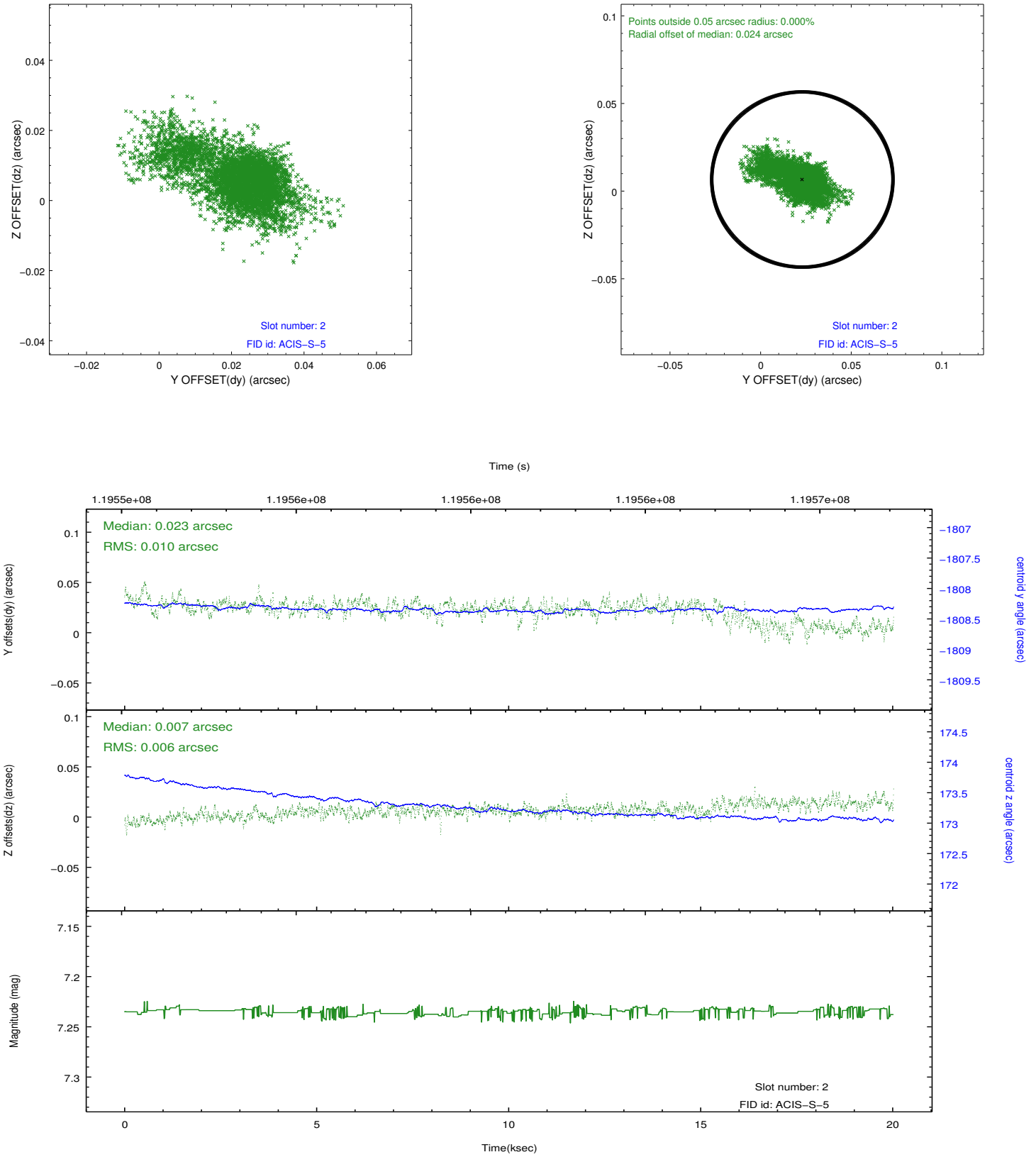
2.5.1 Slot 0



2.5.2 Slot 1



2.5.3 Slot 2



A Summary

A.1 Status

V&V Scientist	Jen Lauer
V&V Date (YYYY-MM-DD)	2012.09.27
V&V Edition	1
V&V Disposition and Status	OK
V&V Charge Time	19.816

A.2 Comments