

V&V Reference Report

L2 ASCDS Version : 7.6.9

Observation 2548 - L2 Version 001
Chandra X-Ray Center

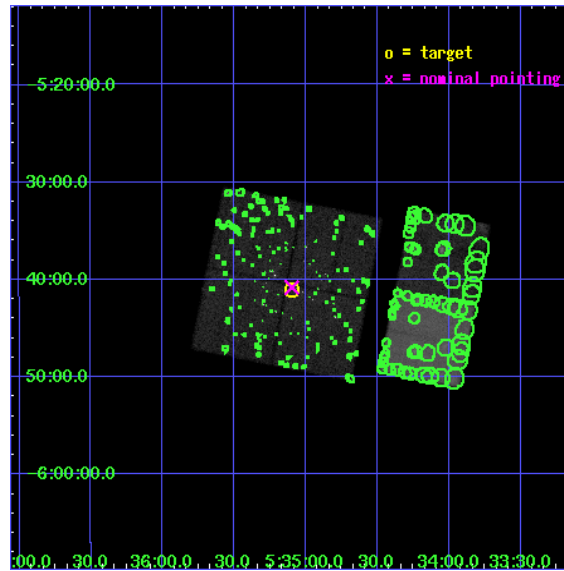
L2 Processing Date : Oct 2 2006

Contents

1	Front	2
2	OBI	3
2.1	OBI	3
2.1.1	Images	3
2.1.2	Bias	3
2.1.3	Parameters	4
2.1.4	Events	4
2.2	Compared Parameters	5
2.3	Aspect	6
2.4	Star Slots	9
2.4.1	Slot 3	9
2.4.2	Slot 4	10
2.4.3	Slot 5	11
2.4.4	Slot 6	12
2.4.5	Slot 7	13
2.5	FID Slots	14
2.5.1	Slot 0	14
2.5.2	Slot 1	15
2.5.3	Slot 2	16
3	Point Sources	17
A	Summary	18
A.1	Status	18
A.2	Comments	18

1 Front

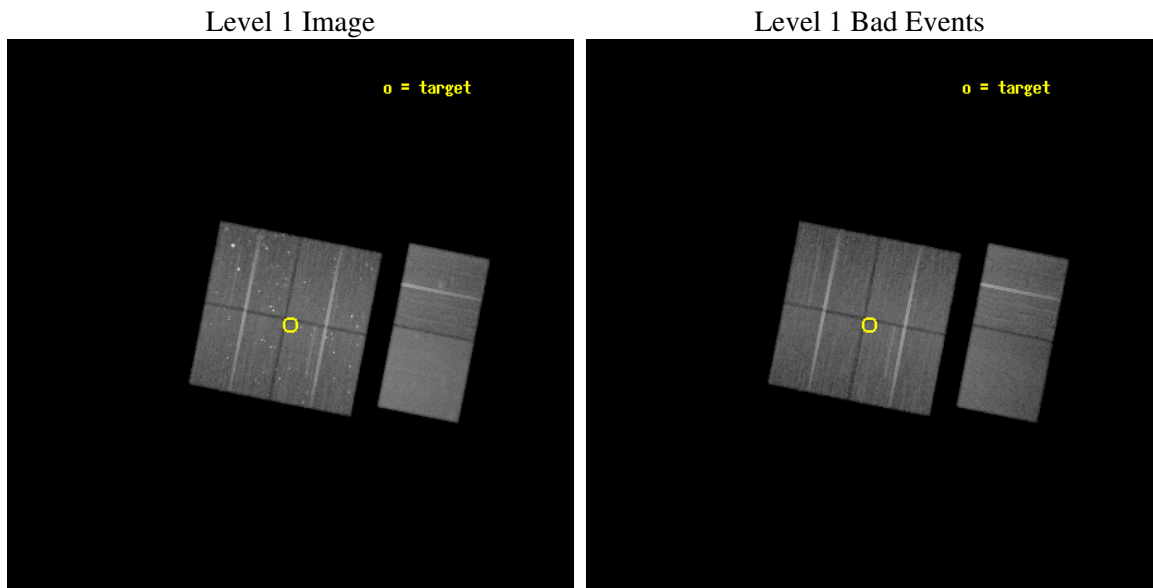
seq_num	200156
obs_id	2548
title	THE AGE-ROTATION-ACTIVITY RELATION IN LATE-TYPE STARS BETWEEN ~1-10 MYR
observer	Dr. John Stauffer
object	ONC FLANKING FIELD S
dtcycle	0
cycle	P
ra_targ	83.773333
dec_targ	-5.684639
ra_nom	83.774290615988
dec_nom	-5.6800915419534
roll_nom	101.2087760362
revision	2
ontime	48460.799819469
livetime	47847.159992565
ontime0	48460.799819469
ontime1	48454.317878932
ontime2	48457.558849186
ontime3	48460.799819469
ontime6	48460.799819469
ontime7	48460.799819469
l2events	382207



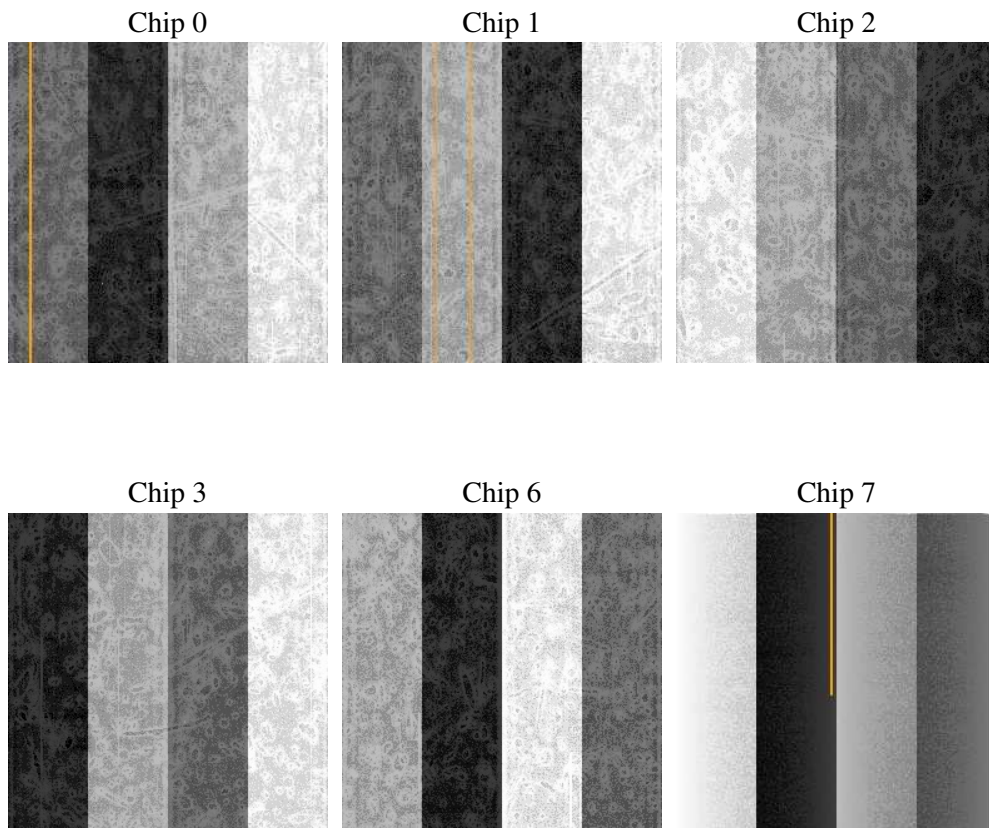
2 OBI

2.1 OBI

2.1.1 Images



2.1.2 Bias



2.1.3 Parameters

obi_num	0
ascdsver	7.6.9
caldsver	3.2.3
date	2006-10-02T23:45:52
revision	2

sched_exp_time	48500.000000
ontime	48465.922581255
ontime0	48465.922581255
ontime1	48459.440640718
ontime2	48462.681610972
ontime3	48465.922581255
ontime6	48465.922581255
ontime7	48465.922601134
l1events	1985107

2.1.4 Events

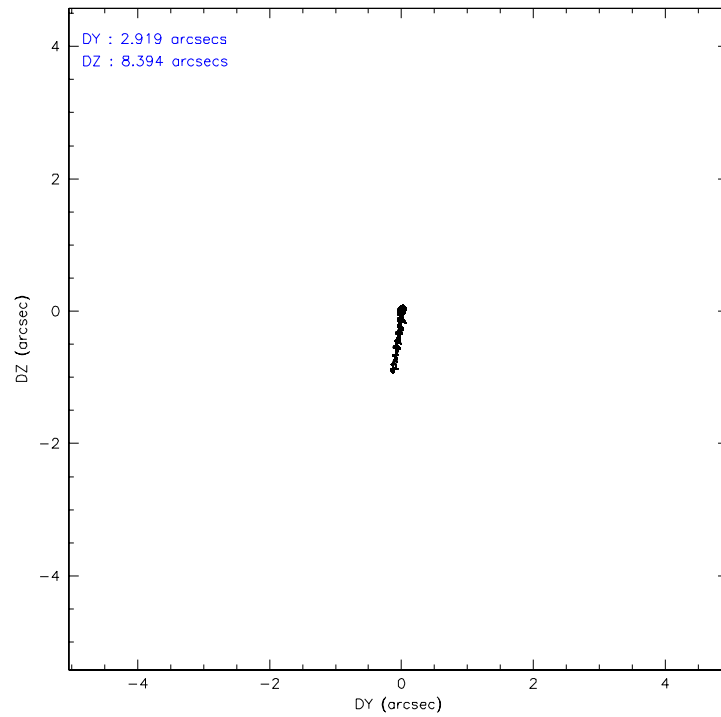
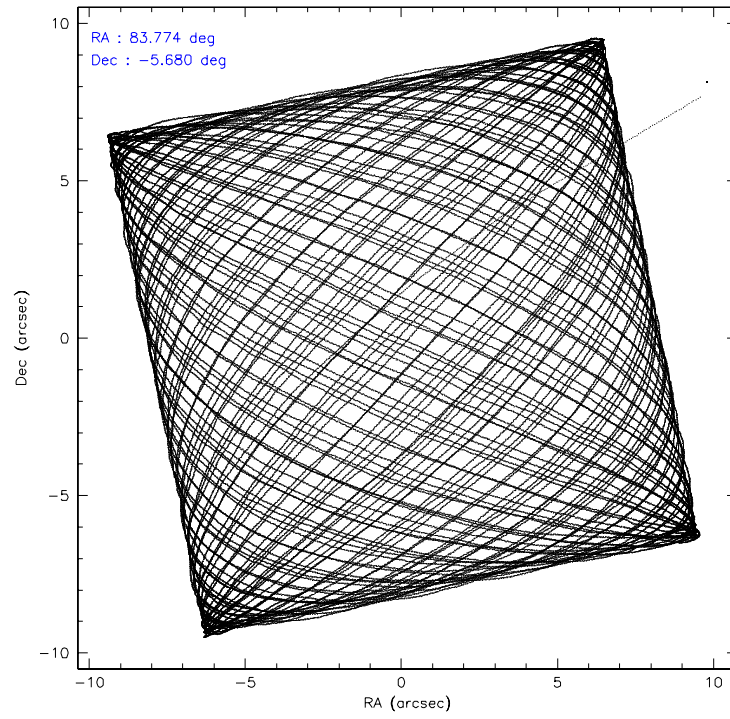
	ccd 0	ccd 1	ccd 2	ccd 3	ccd 6	ccd 7
level 1 events	312121	290128	322393	321555	328401	410509
rejected events	243185	243437	274819	272632	286525	248121
rejected %	77%	83%	85%	84%	87%	60%

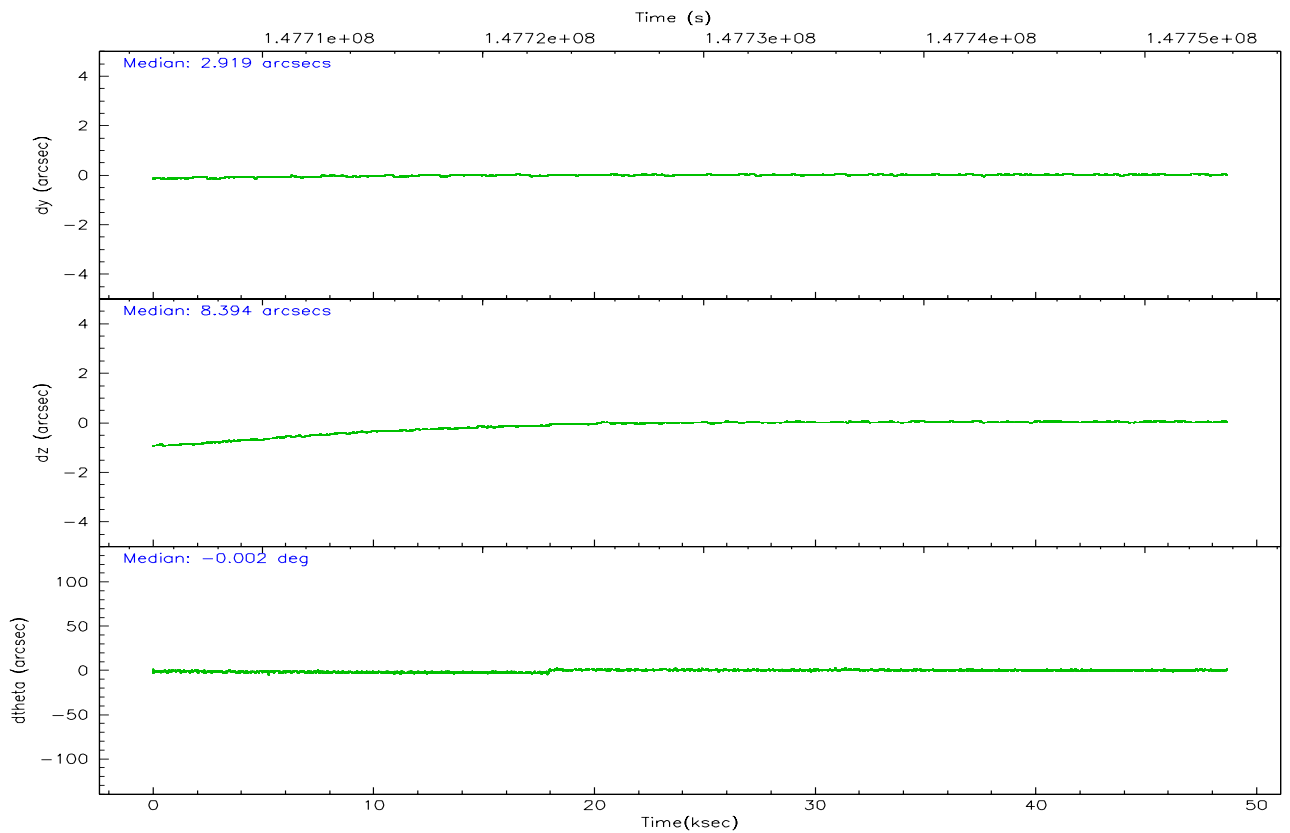
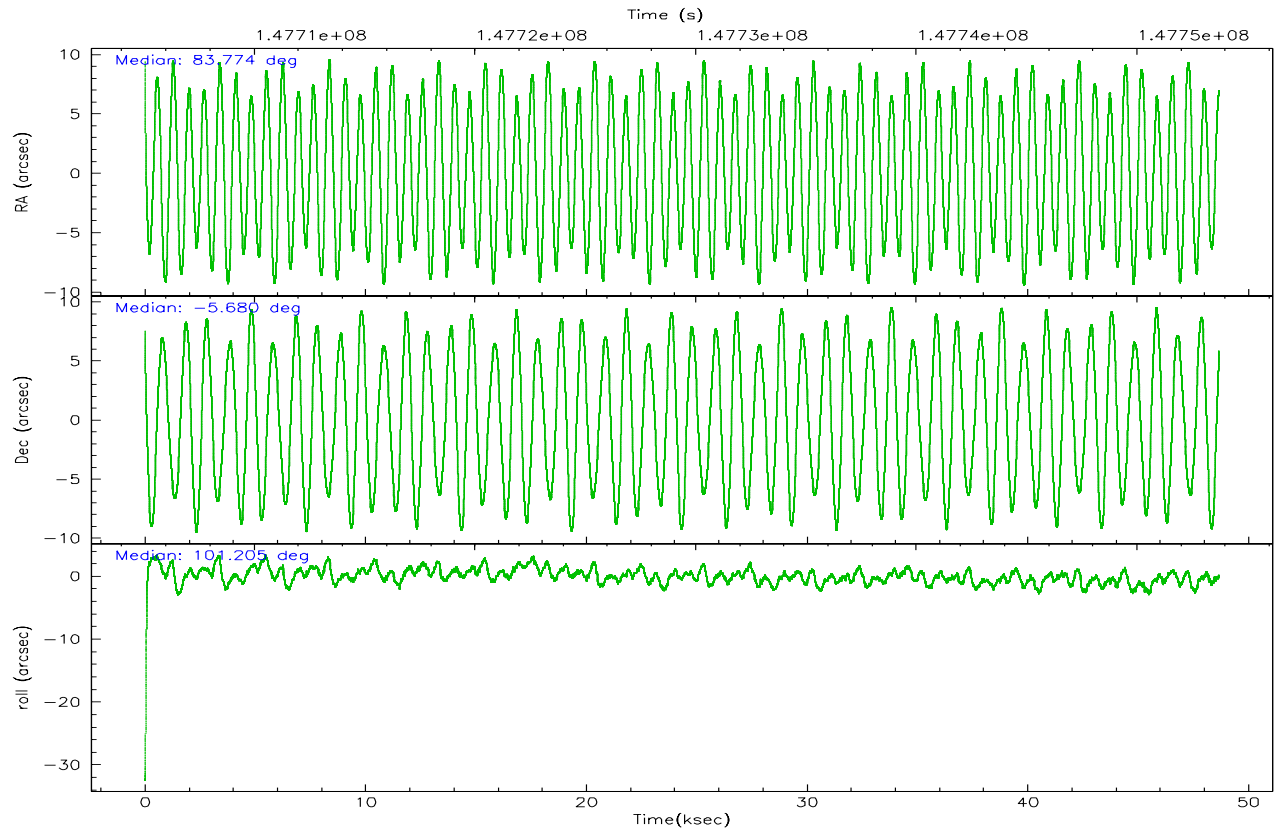
	ccd 0	ccd 1	ccd 2	ccd 3	ccd 6	ccd 7
grade 0 events	42616	22404	25438	27179	18915	11492
	13%	7%	7%	8%	5%	2%
grade 1 events	396	204	241	257	164	254
	0%	0%	0%	0%	0%	0%
grade 2 events	10895	8891	8662	7861	8146	40087
	3%	3%	2%	2%	2%	9%
grade 3 events	4523	3894	3685	3751	3734	8781
	1%	1%	1%	1%	1%	2%
grade 4 events	4144	3974	3640	3756	3612	8553
	1%	1%	1%	1%	1%	2%
grade 5 events	11759	11977	11347	13012	13948	27218
	3%	4%	3%	4%	4%	6%
grade 6 events	6771	7533	6154	6383	7475	93487
	2%	2%	1%	1%	2%	22%
grade 7 events	231017	231251	263226	259356	272407	220637
	74%	79%	81%	80%	82%	53%

2.2 Compared Parameters

Parameter	Planned	Actual	Parameter	Planned	Actual
Instrument	ACIS	ACIS	Obspar format version number	6	6
Detector	ACIS-012367	ACIS-012367	Obspar file type	PREDICTED	ACTUAL
Grating	NONE	NONE	Obspar update status	NONE	UPDATED
Data mode	FAINT	FAINT	Number of optional ACIS chips dropped	0	0
Observation mode	POINTING	POINTING	On-chip summing requested	N	N
Pointing RA	83.792502	83.77429061598828	Subarray requested	NONE	NONE
Pointing Dec	-5.700626	-5.680091541953353	Alternating exposures requested	N	N
Pointing Roll	101.001902	101.2087760362018	Primary exposure time	0.000000	3.2
SIM focus pos (mm)	-0.782348	-0.7809083437167272			
SIM defocus (mm)	0	0.001439871863259334			
SIM translation stage pos (mm)	-233.592463	-233.5874344608287			
SIM translation stage offset (mm)	0	-0.005018542100998502			
Observation start time	147705229.184000	147704252.49911			
Observation start date	2002-09-06T13:12:45	2002-09-06T12:57:32			
Observation end time	147753729.184000	147754441.62618			
Observation end date	2002-09-07T02:41:05	2002-09-07T02:54:01			
Read mode	TIMED	TIMED			

2.3 Aspect



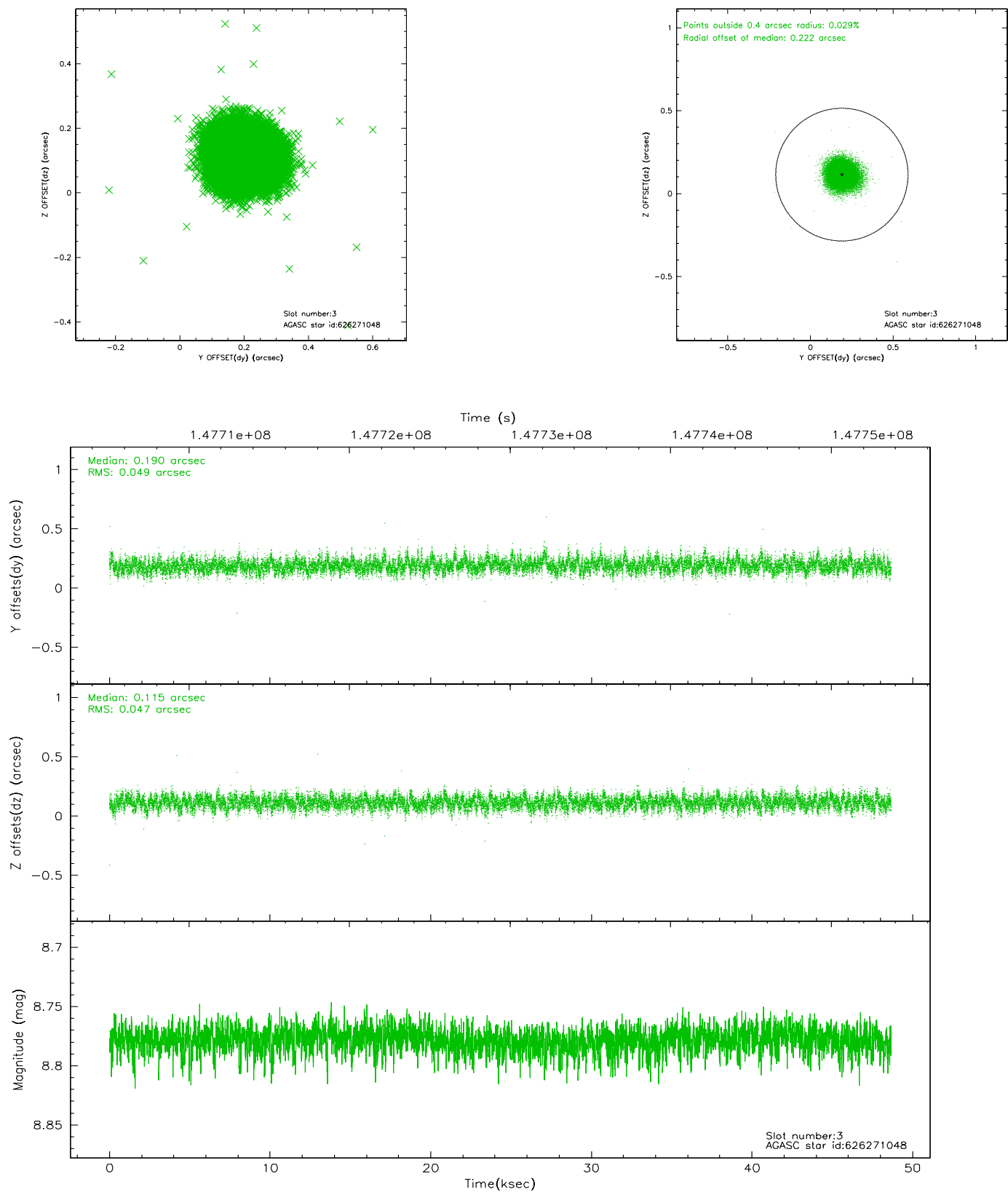


Slot Statistics

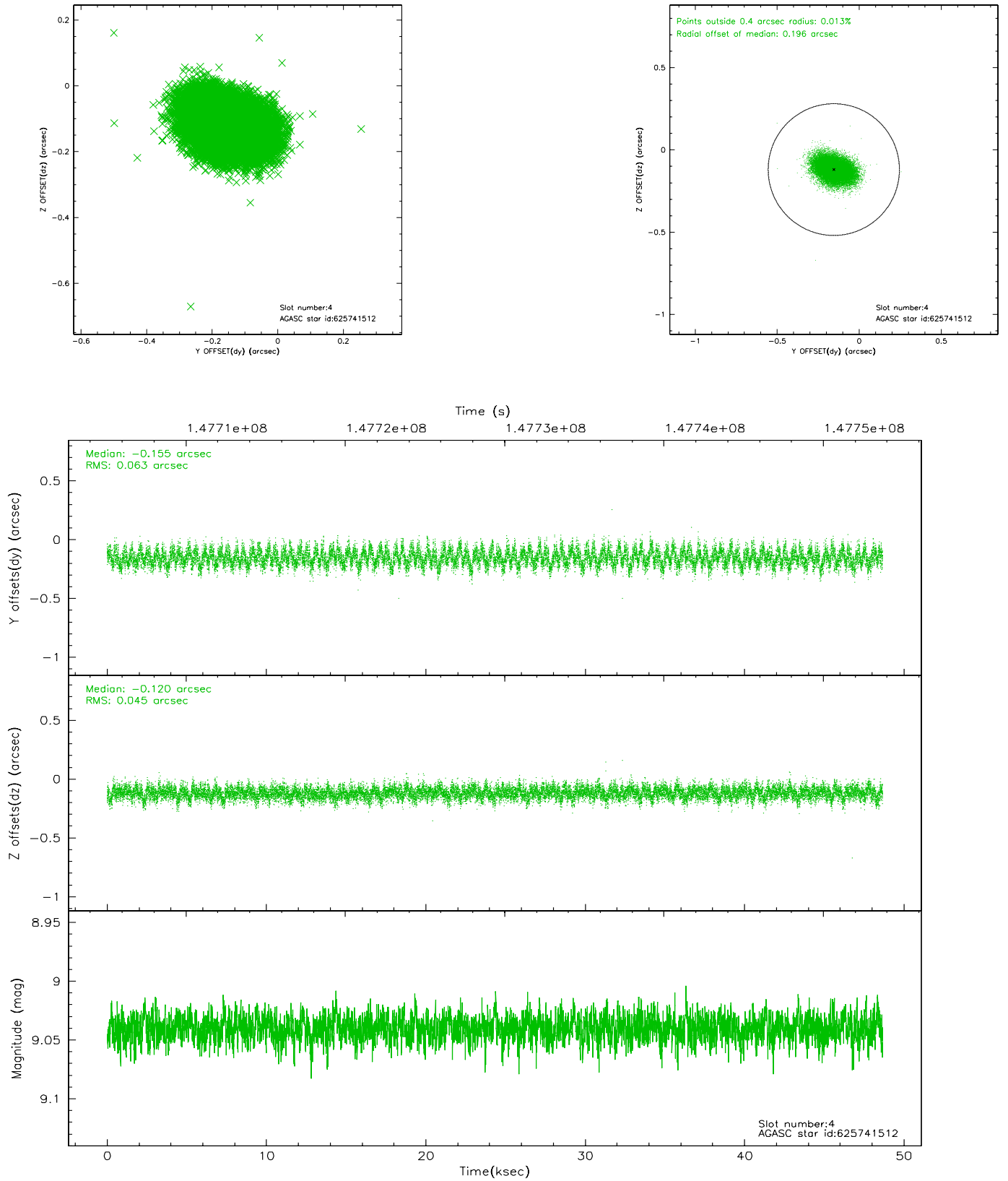
slot	status	id	mag	n_pts	med_dy	med_dz	dr1	dr2	ra	dec	mean_y	mean_z
0	FID	ACIS-I-2	7.14	11871	-0.039	-0.037	0.016	0.032	0.000000	0.000000	-757.32	-838.08
1	FID	ACIS-I-4	7.19	11868	0.023	0.039	0.009	0.015	0.000000	0.000000	2156.79	1068.21
2	FID	ACIS-I-5	7.23	11869	-0.085	0.068	0.014	0.023	0.000000	0.000000	-1811.22	1066.04
3	GUIDE	626271048	8.78	23735	0.190	0.115	0.071	0.116	83.996760	-6.275047	-2169.44	-322.16
4	GUIDE	625741512	9.04	23728	-0.155	-0.120	0.082	0.136	83.281151	-5.340585	1620.91	1552.68
5	GUIDE	626266640	9.53	23729	0.216	-0.188	0.101	0.163	83.403152	-6.380225	-2136.23	1834.92
6	GUIDE	625744568	9.62	23724	-0.040	0.089	0.092	0.153	84.113275	-5.408703	811.74	-1328.11
7	GUIDE	625744368	9.76	23715	-0.202	0.108	0.141	0.239	83.825857	-5.065183	2222.47	-553.13

2.4 Star Slots

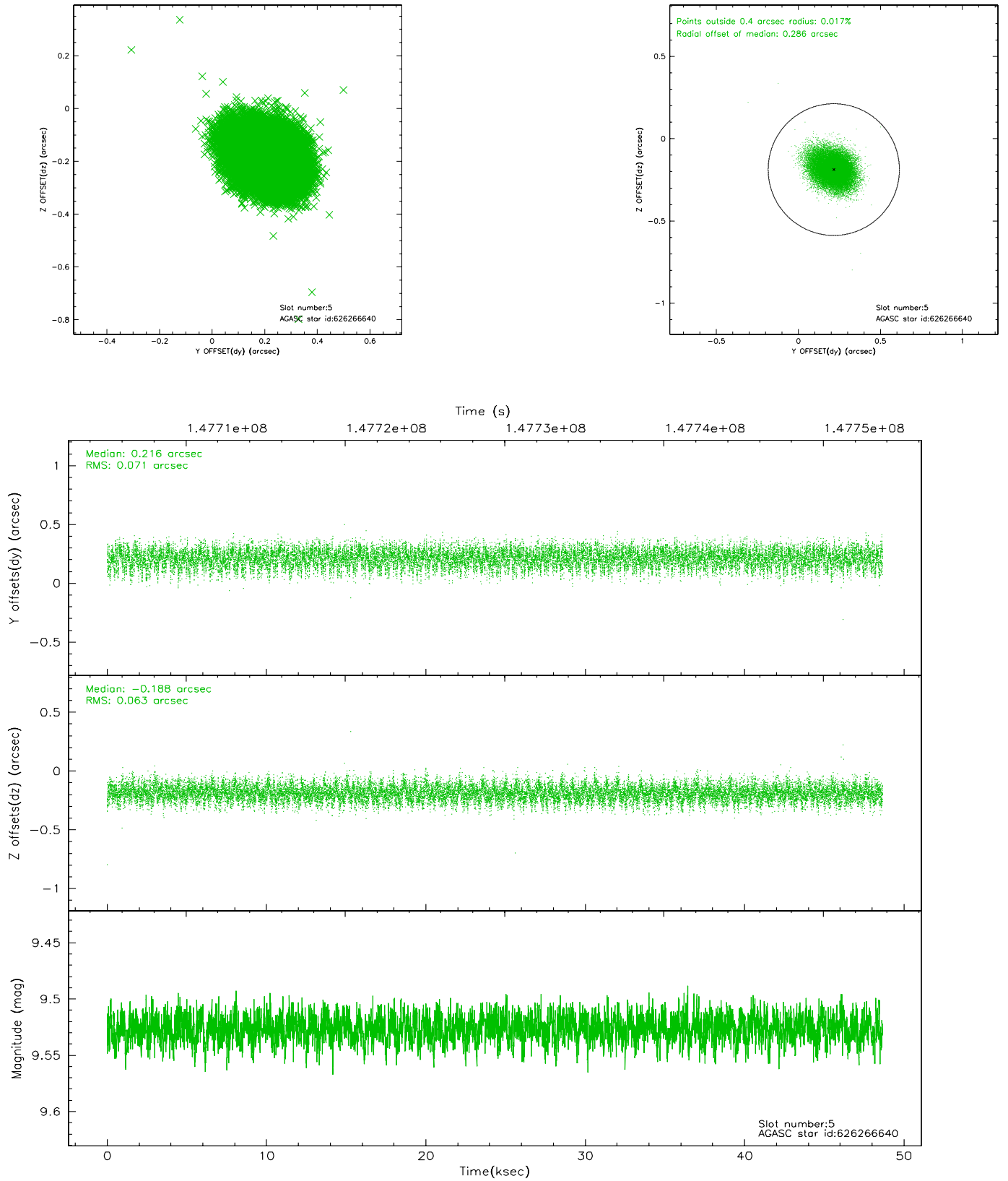
2.4.1 Slot 3



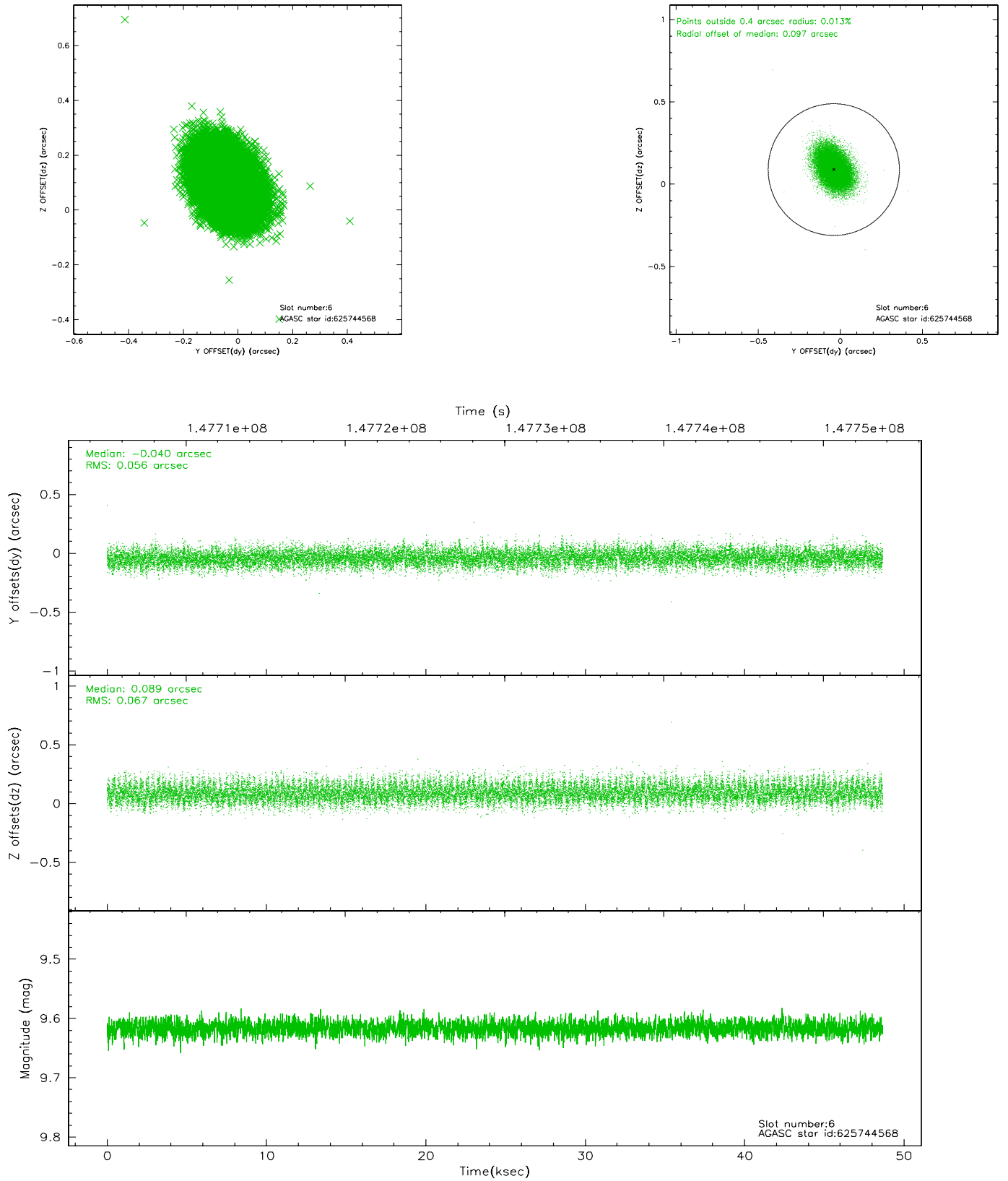
2.4.2 Slot 4



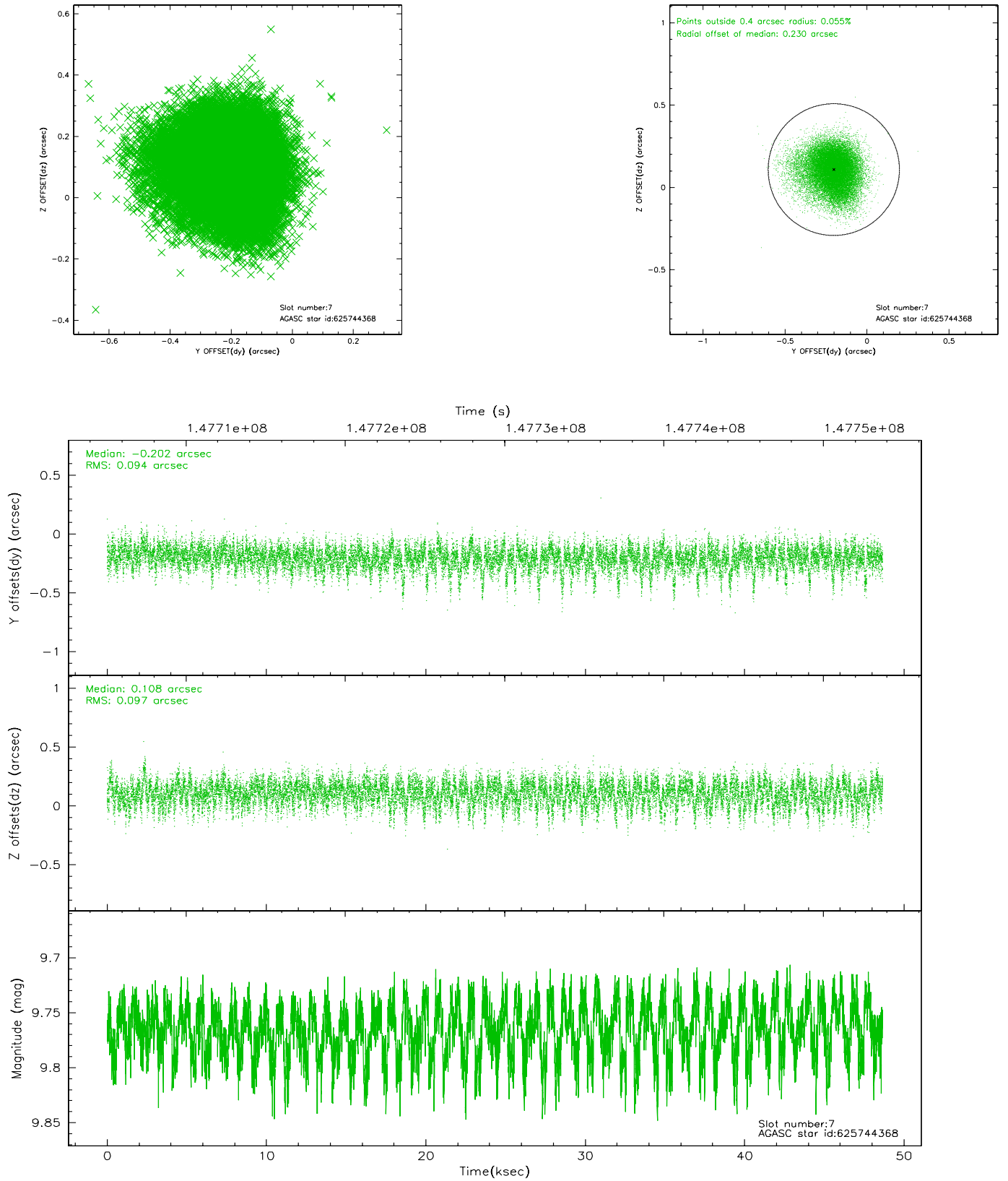
2.4.3 Slot 5



2.4.4 Slot 6

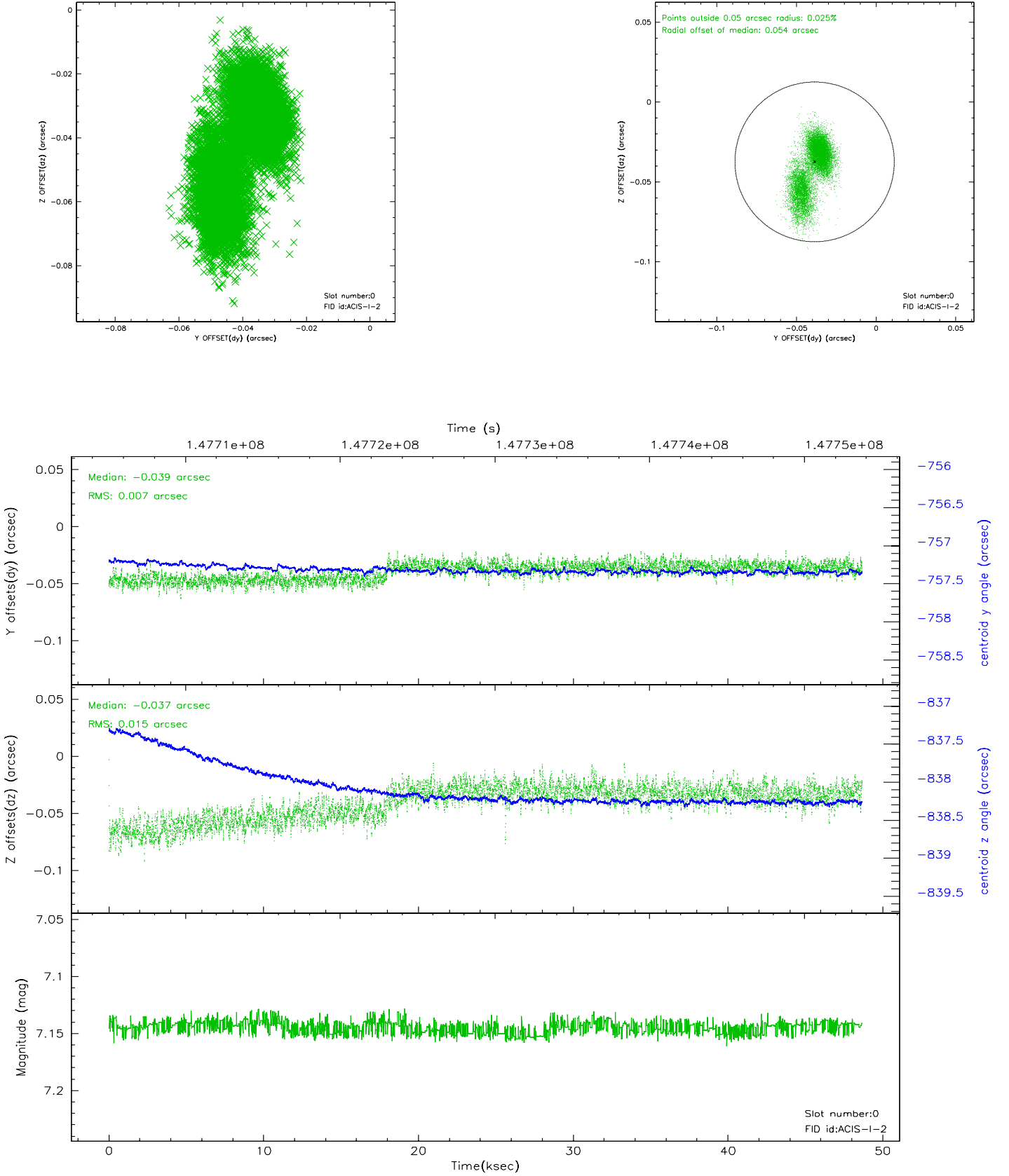


2.4.5 Slot 7

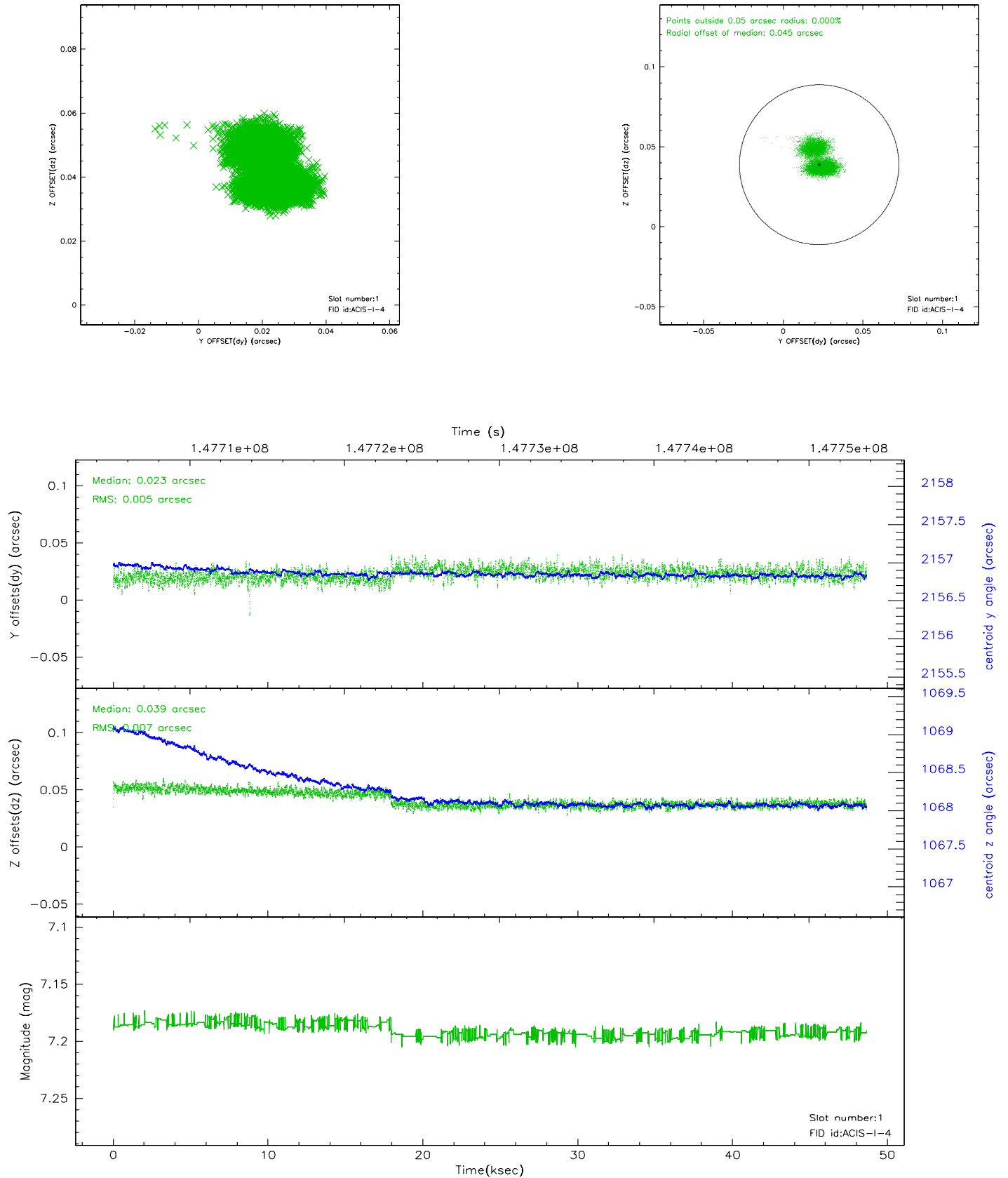


2.5 FID Slots

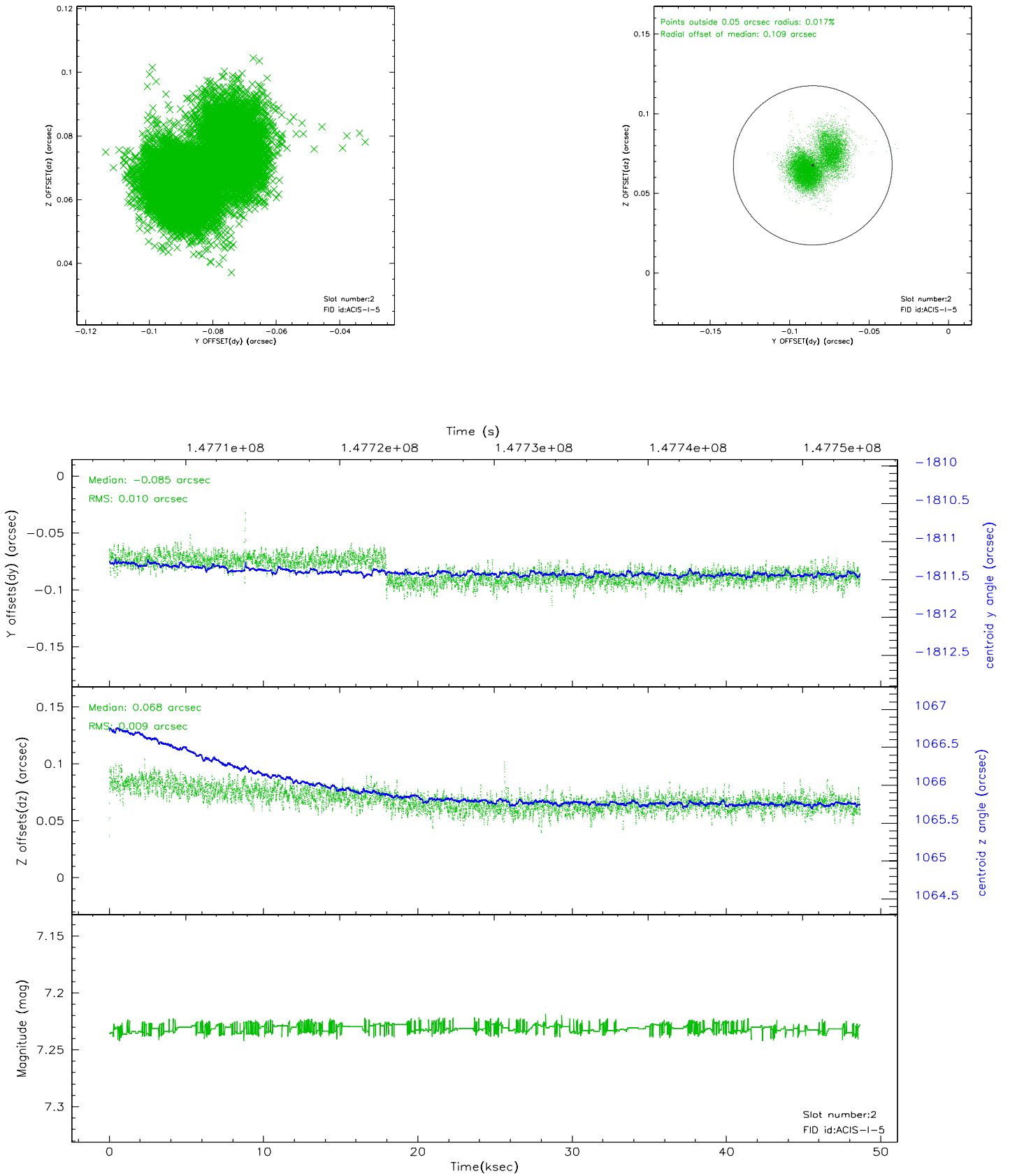
2.5.1 Slot 0



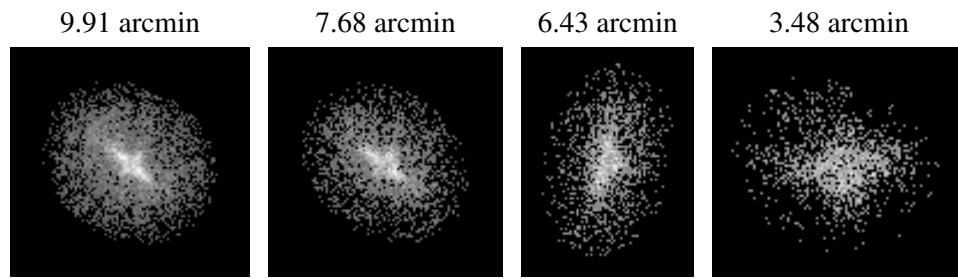
2.5.2 Slot 1



2.5.3 Slot 2



3 Point Sources



A Summary

A.1 Status

V&V Scientist	Beth Sundheim
V&V Date (YYYY-MM-DD)	2006.10.03
V&V Edition	1
V&V Disposition and Status	OK
V&V Charge Time	48.463

A.2 Comments