

# V&V Reference Report

## L2 ASCDS Version : 7.6.11.10

Observation 2468 - L2 Version 3  
Chandra X-Ray Center

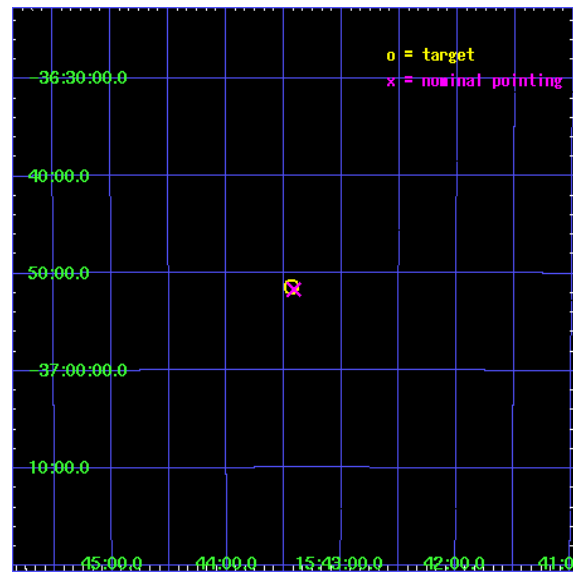
L2 Processing Date : Feb 3 2009

## Contents

<b>1</b>	<b>Front</b>	<b>2</b>
<b>2</b>	<b>OBI</b>	<b>3</b>
2.1	OBI . . . . .	3
2.1.1	Images . . . . .	3
2.1.2	Bias . . . . .	3
2.1.3	Parameters . . . . .	4
2.1.4	Events . . . . .	4
2.2	Compared Parameters . . . . .	5
2.3	Star Slots . . . . .	6
2.4	FID Slots . . . . .	6
<b>3</b>	<b>Point Sources</b>	<b>7</b>
<b>A</b>	<b>Summary</b>	<b>8</b>
A.1	Status . . . . .	8
A.2	Comments . . . . .	8

# 1 Front

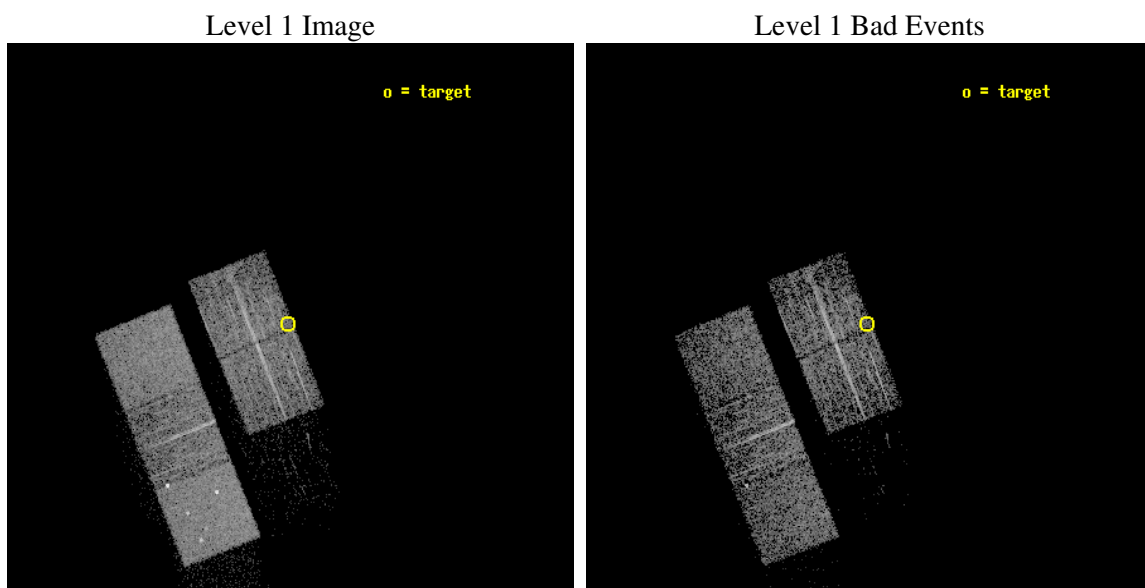
seq_num	190007
obs_id	2468
title	ACIS DARK CURRENT CALIBARTION ON DARK MOON
observer	DR. SCOTT WOLK
object	DARK MOON
dtcycle	0
cycle	P
ra_targ	235.85892
dec_targ	-36.85797
ra_nom	235.85318790732
dec_nom	-36.861782132073
roll_nom	248.3727635833
revision	3
ontime	0.0
livetime	0.0
ontime2	0.0
ontime3	0.0
ontime5	0.0
ontime6	0.0
ontime7	0.0
l2events	0



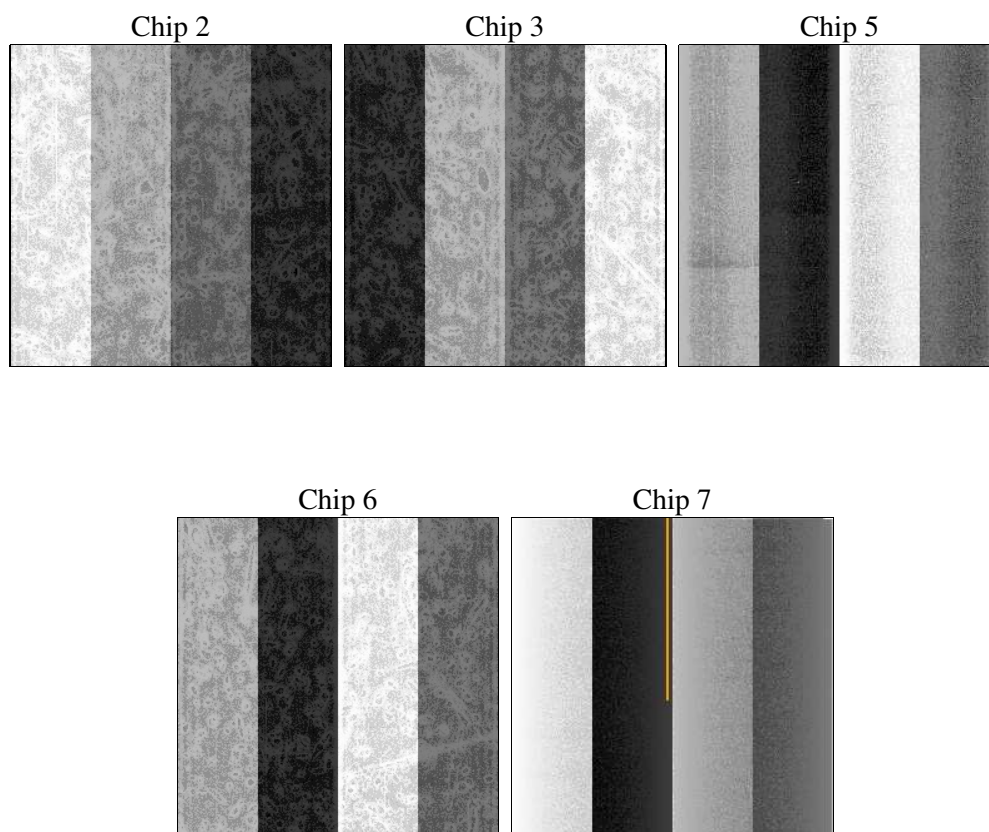
## 2 OBI

### 2.1 OBI

#### 2.1.1 Images



#### 2.1.2 Bias



### 2.1.3 Parameters

obi_num	0
ascdsver	7.6.11.10
caldsver	3.5.1
date	2009-02-03T22:20:05
revision	3

sched_exp_time	3360.000000
ontime	0.0
ontime2	3316.895121187
ontime3	3316.895121187
ontime5	3316.8950912654
ontime6	3316.895121187
ontime7	3318.4921076149
l1events	125490

### 2.1.4 Events

	<b>ccd 2</b>	<b>ccd 3</b>	<b>ccd 5</b>	<b>ccd 6</b>	<b>ccd 7</b>
level 1 events	21768	22304	32547	21061	27810
rejected events	19456	19940	16749	18652	16137
rejected %	89%	89%	51%	88%	58%

	<b>ccd 2</b>	<b>ccd 3</b>	<b>ccd 5</b>	<b>ccd 6</b>	<b>ccd 7</b>
grade 0 events	963	1016	2510	926	1017
	4%	4%	7%	4%	3%
grade 1 events	9	5	106	12	20
	0%	0%	0%	0%	0%
grade 2 events	495	462	4240	491	2296
	2%	2%	13%	2%	8%
grade 3 events	215	256	716	260	1052
	0%	1%	2%	1%	3%
grade 4 events	228	216	717	237	1040
	1%	0%	2%	1%	3%
grade 5 events	744	900	2365	885	2623
	3%	4%	7%	4%	9%
grade 6 events	411	414	7615	495	6268
	1%	1%	23%	2%	22%
grade 7 events	18703	19035	14278	17755	13494
	85%	85%	43%	84%	48%

## 2.2 Compared Parameters

Parameter	Planned	Actual	Parameter	Planned	Actual
Instrument	ACIS	ACIS	Obspar format version number	6	6
Detector	ACIS-23567	ACIS-23567	Obspar file type	PREDICTED	ACTUAL
Grating	NONE	NONE	Obspar update status	OVERRIDE	OVERRIDE
Data mode	VFAINT	VFAINT	Number of optional ACIS chips dropped	0	0
Observation mode	POINTING	POINTING	On-chip summing requested	N	N
Pointing RA	235.8531879073198	235.8531879073198	Subarray requested	NONE	NONE
Pointing Dec	-36.86178213207287	-36.86178213207287	Alternating exposures requested	N	N
Pointing Roll	248.3727635833042	248.3727635833042	Primary exposure time	3.1	3.1
Window start time	117525664.184000	117525664.184000			
Window stop time	117568864.184000	117568864.184000			
SIM focus pos (mm)	-0.78090834371673	-0.78090834371673			
SIM defocus (mm)	0.001439854621703041	0.001439854621703041			
SIM translation stage pos (mm)	-233.5874344608	-233.5874344608			
SIM translation stage offset (mm)	-0.005028630631784381	-0.005028630631784381			
Observation start time	117529309.0770815	117529309.0770815			
Observation start date	2001-09-22T07:00:00	2001-09-22T07:01:49			
Observation end time	117532804.3272197	117532804.3272197			
Observation end date	2001-09-22T07:56:00	2001-09-22T08:00:04			
Read mode	TIMED	TIMED			

## **2.3 Star Slots**

## **2.4 FID Slots**

### 3 Point Sources

# A Summary

## A.1 Status

V&V Scientist	Jen Lauer
V&V Date (YYYY-MM-DD)	2009.02.04
V&V Edition	1
V&V Disposition and Status	OK
V&V Charge Time	3.495

## A.2 Comments

Charge time is based on Level 1 events because the OBC aspect solution was used (violation of earth angle constraint.) Consequently, there are no Level 2 events and no GTI.

This obsid was reprocessed to correct minor errors in parameters used in processing. Some of these parameters cannot be determined automatically for this observation and were derived from spacecraft telemetry.