

V&V Reference Report

L2 ASCDS Version : 7.6.9

Observation 2288 - L2 Version 001
Chandra X-Ray Center

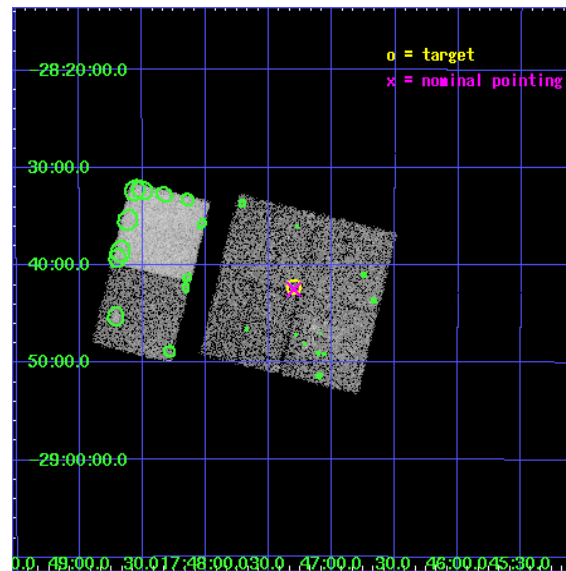
L2 Processing Date : Dec 14 2006

Contents

1	Front	2
2	OBI	3
2.1	OBI	3
2.1.1	Images	3
2.1.2	Bias	3
2.1.3	Parameters	4
2.1.4	Events	4
2.2	Compared Parameters	5
2.3	Aspect	6
2.4	Star Slots	9
2.4.1	Slot 3	9
2.4.2	Slot 4	10
2.4.3	Slot 5	11
2.4.4	Slot 6	12
2.4.5	Slot 7	13
2.5	FID Slots	14
2.5.1	Slot 0	14
2.5.2	Slot 1	15
2.5.3	Slot 2	16
3	Point Sources	17
A	Summary	18
A.1	Status	18
A.2	Comments	18

1 Front

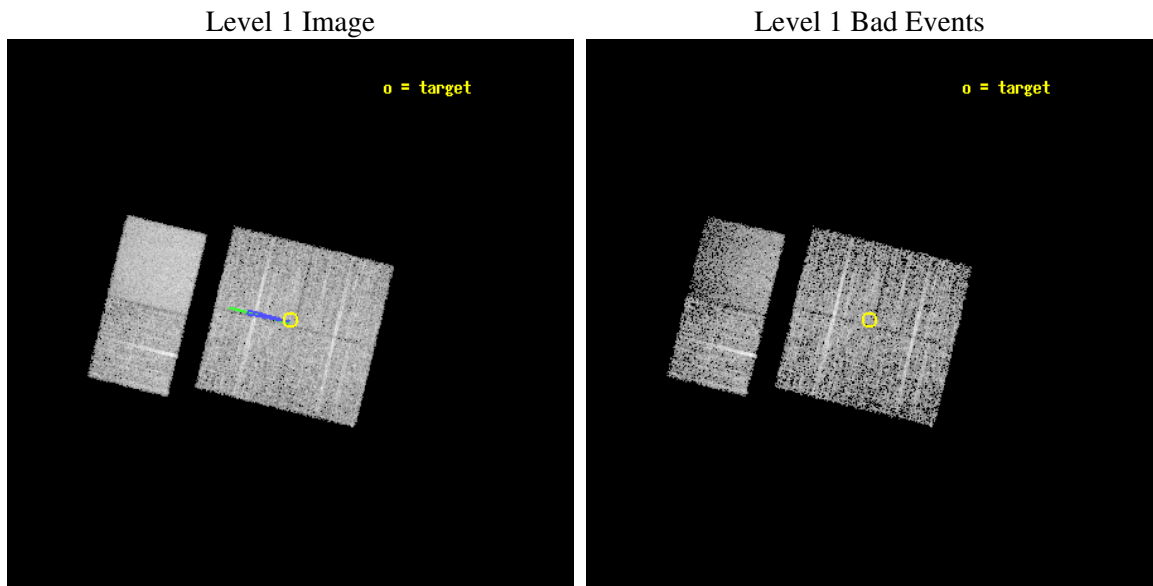
seq_num	900115
obs_id	2288
title	CHANDRA SURVEY OF THE GALACTIC RIDGE AROUND THE MILKY WAY CENTER
observer	Prof. Q. Daniel Wang
object	GCS 7
dtcycle	0
cycle	P
ra_targ	266.8264
dec_targ	-28.7042
ra_nom	266.82549959789
dec_nom	-28.708832078551
roll_nom	283.80721353929
revision	2
ontime	11939.118090615
livetime	11787.937788477
ontime0	11942.35905087
ontime1	11942.35905087
ontime2	11942.35905087
ontime3	11939.118090615
ontime6	11945.600011125
ontime7	11942.35905087
l2events	61569



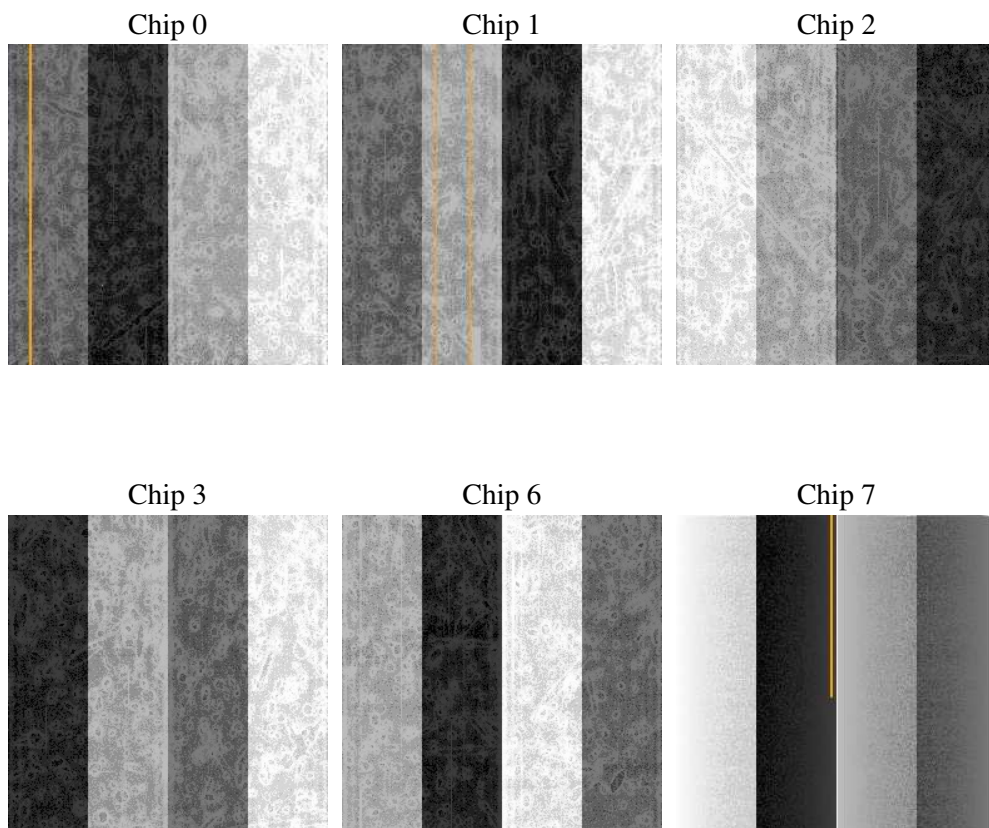
2 OBI

2.1 OBI

2.1.1 Images



2.1.2 Bias



2.1.3 Parameters

obi_num	0
ascdsver	7.6.9
caldbver	3.2.4
date	2006-12-14T11:43:06
revision	2

sched_exp_time	12000.000000
ontime	11943.092797011
ontime0	11946.333757266
ontime1	11946.333757266
ontime2	11946.333757266
ontime3	11943.092797011
ontime6	11949.574717522
ontime7	11946.333757266
l1events	212518

2.1.4 Events

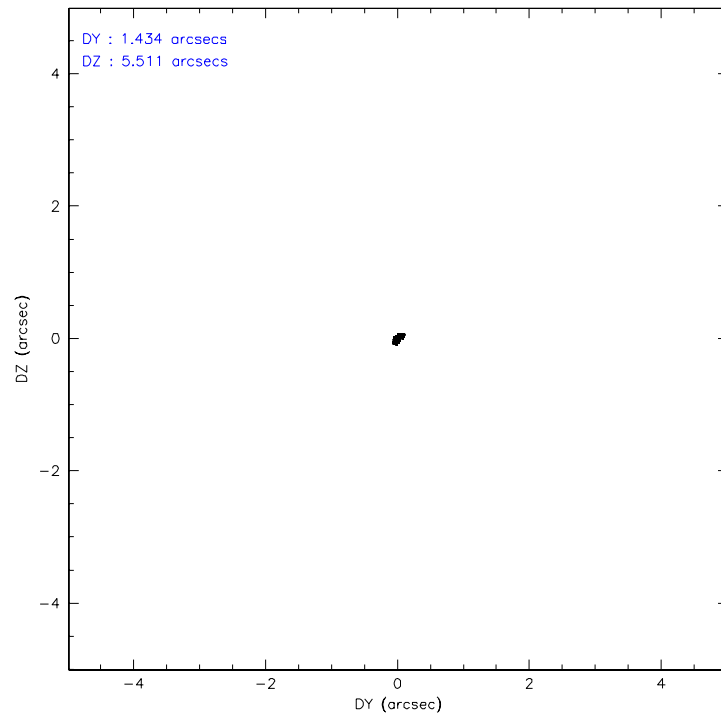
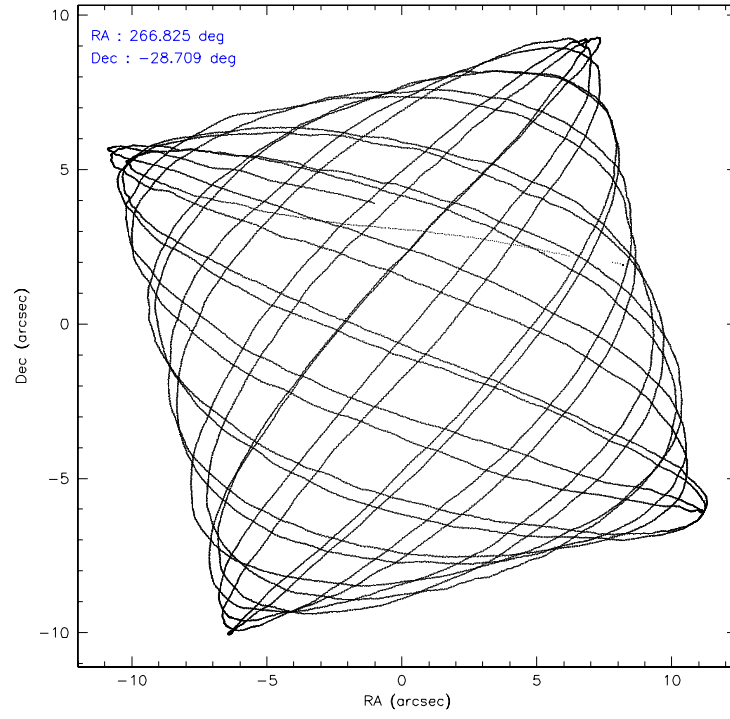
	ccd 0	ccd 1	ccd 2	ccd 3	ccd 6	ccd 7
level 1 events	31944	32056	32795	32158	34039	49526
rejected events	23060	24119	26703	25534	27304	20660
rejected %	72%	75%	81%	79%	80%	41%

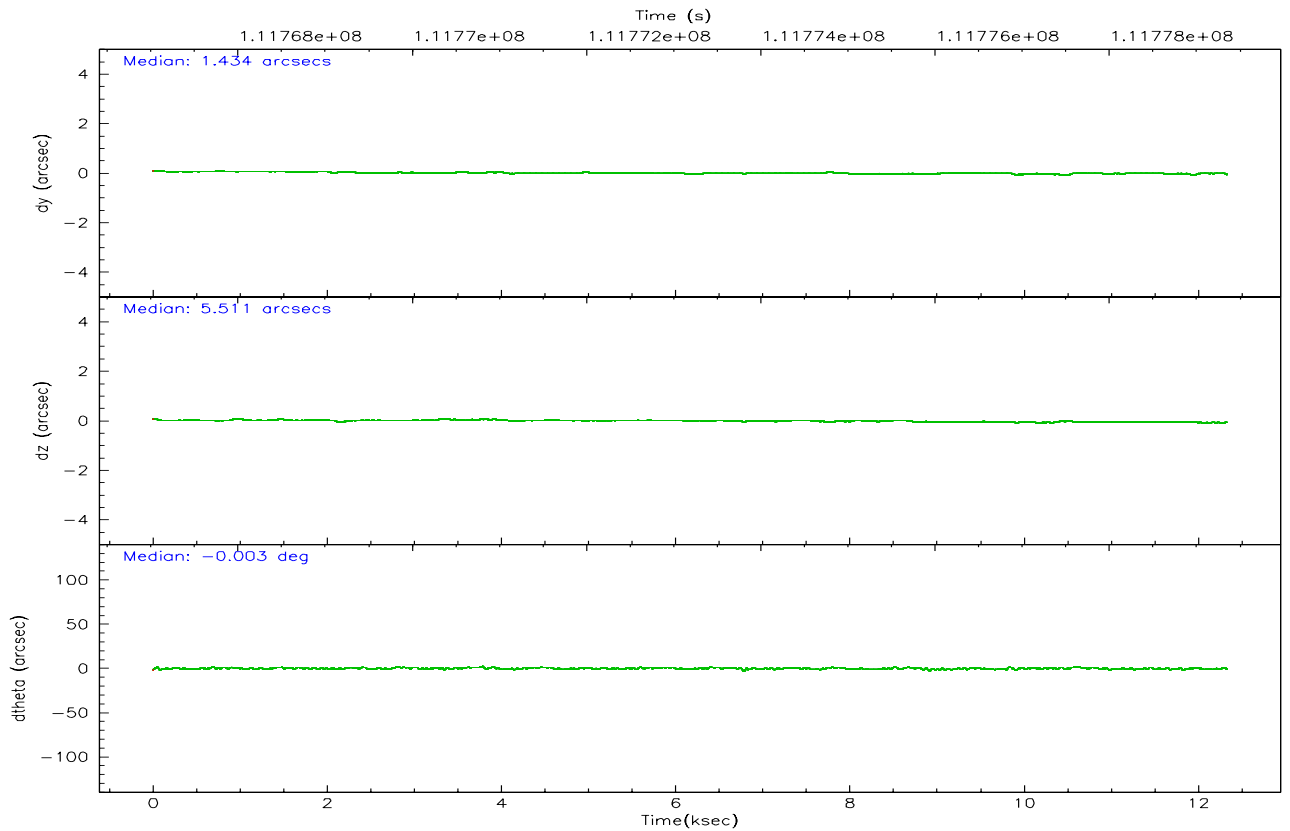
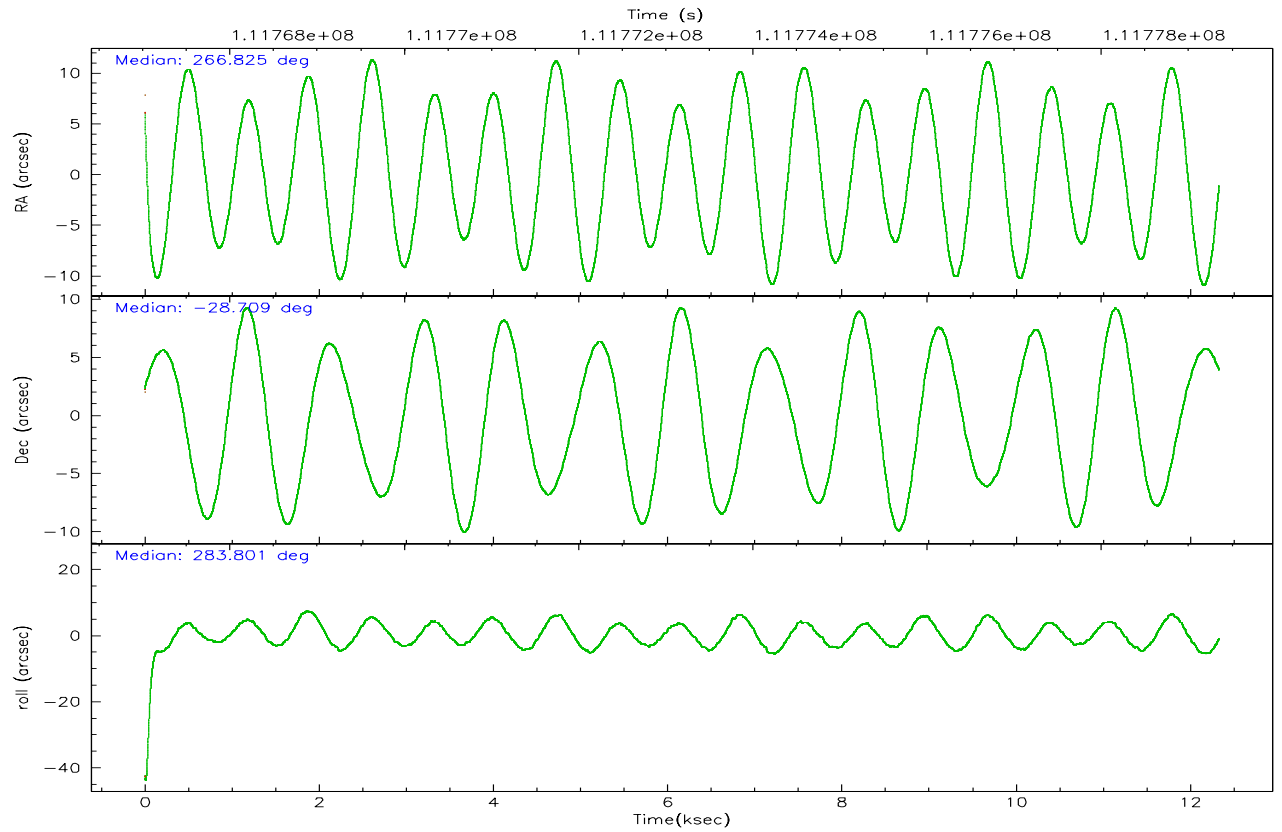
	ccd 0	ccd 1	ccd 2	ccd 3	ccd 6	ccd 7
grade 0 events	5052	4078	3094	3362	3520	1744
	15%	12%	9%	10%	10%	3%
grade 1 events	44	37	27	36	31	22
	0%	0%	0%	0%	0%	0%
grade 2 events	1510	1455	1158	1229	1203	6872
	4%	4%	3%	3%	3%	13%
grade 3 events	630	612	480	479	478	1640
	1%	1%	1%	1%	1%	3%
grade 4 events	654	678	475	554	501	1550
	2%	2%	1%	1%	1%	3%
grade 5 events	1288	1290	1132	1322	1478	3465
	4%	4%	3%	4%	4%	6%
grade 6 events	1040	1118	887	1001	1035	17065
	3%	3%	2%	3%	3%	34%
grade 7 events	21726	22788	25542	24175	25793	17168
	68%	71%	77%	75%	75%	34%

2.2 Compared Parameters

Parameter	Planned	Actual	Parameter	Planned	Actual
Instrument	ACIS	ACIS	Obspar format version number	6	6
Detector	ACIS-012367	ACIS-012367	Obspar file type	PREDICTED	ACTUAL
Grating	NONE	NONE	Obspar update status	NONE	UPDATED
Data mode	FAINT	FAINT	Number of optional ACIS chips dropped	0	0
Observation mode	POINTING	POINTING	On-chip summing requested	N	N
Pointing RA	266.803855	266.8254995978906	Subarray requested	NONE	NONE
Pointing Dec	-28.689090	-28.70883207855076	Alternating exposures requested	N	N
Pointing Roll	283.588177	283.8072135392931	Primary exposure time	0.000000	3.2
Roll angle	283.600000	283.600000			
Roll tolerance	2.000000	2.000000			
Roll constraint allows 180D rotation	N	N			
SIM focus pos (mm)	-0.782348	-0.7809083437167272			
SIM defocus (mm)	0	0.001439871863259334			
SIM translation stage pos (mm)	-233.592463	-233.5874344608287			
SIM translation stage offset (mm)	0	-0.005018542100998502			
Observation start time	111767354.184000	111766311.95022			
Observation start date	2001-07-17T14:28:10	2001-07-17T14:11:51			
Observation end time	111779354.184000	111779488.83823			
Observation end date	2001-07-17T17:48:10	2001-07-17T17:51:28			
Read mode	TIMED	TIMED			

2.3 Aspect



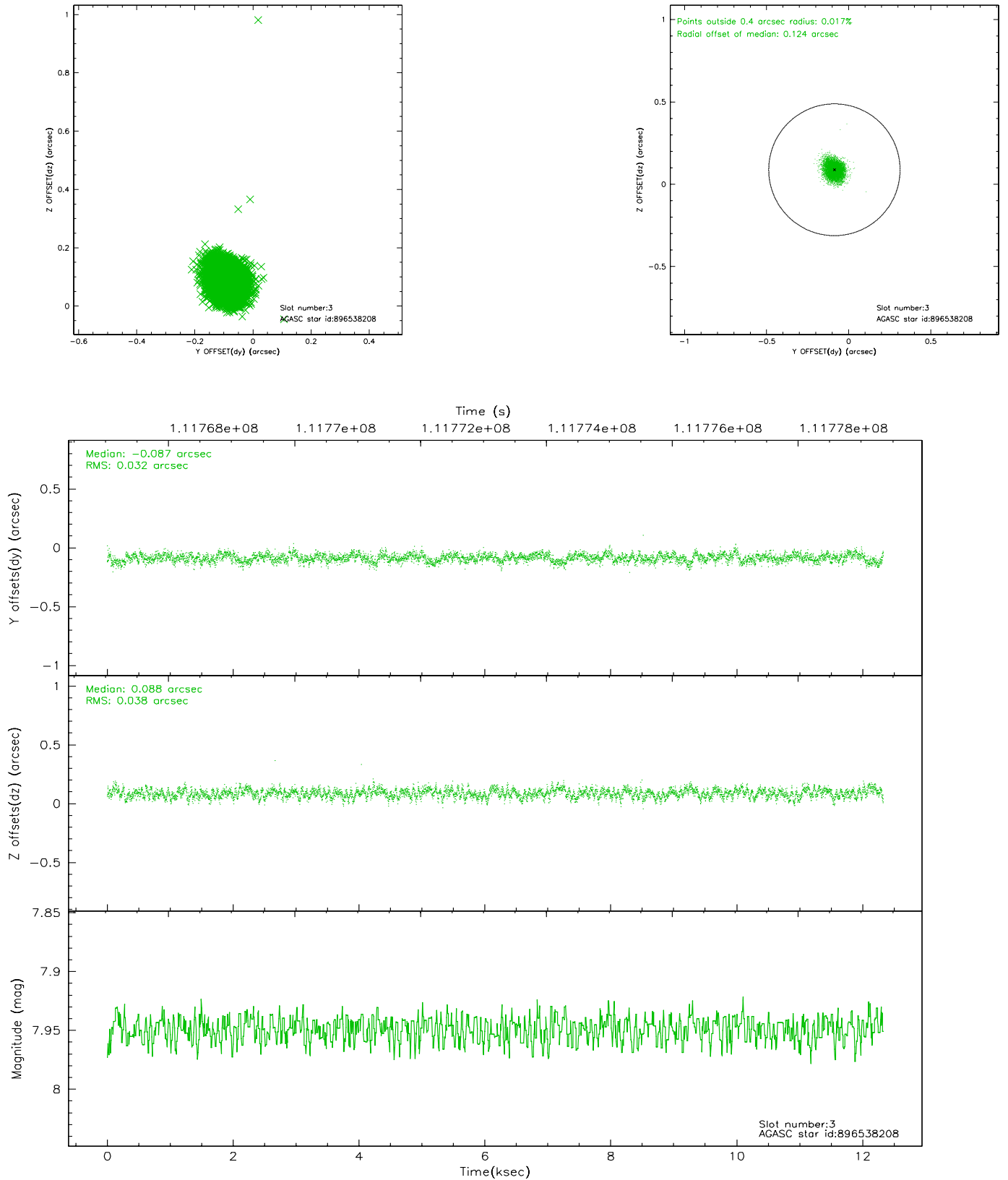


Slot Statistics

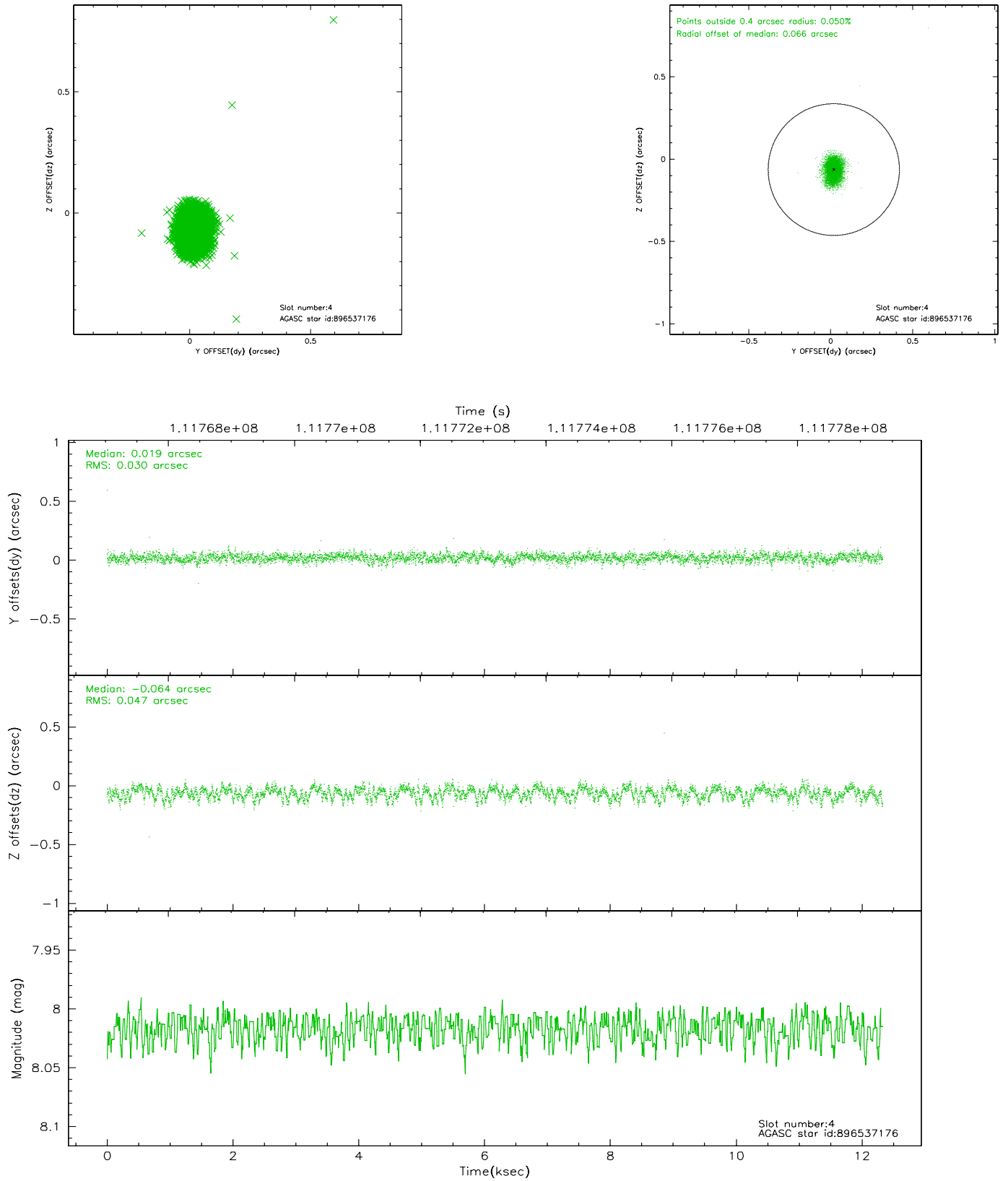
slot	status	id	mag	n_pts	med_dy	med_dz	dr1	dr2	ra	dec	mean_y	mean_z
0	FID	ACIS-I-2	7.15	3009	-0.019	-0.028	0.009	0.015	0.000000	0.000000	-755.79	-835.26
1	FID	ACIS-I-4	7.18	3008	-0.074	0.028	0.006	0.011	0.000000	0.000000	2158.02	1070.79
2	FID	ACIS-I-5	7.23	3008	-0.008	0.069	0.010	0.017	0.000000	0.000000	-1809.10	1069.11
3	GUIDE	896538208	7.95	6016	-0.087	0.088	0.051	0.082	267.176969	-28.671626	216.70	1160.71
4	GUIDE	896537176	8.02	6016	0.019	-0.064	0.057	0.094	266.498272	-28.678259	-263.95	-928.43
5	GUIDE	896536320	8.99	6014	0.032	-0.043	0.077	0.122	266.369048	-29.307026	1843.62	-1849.33
6	GUIDE	896011040	7.69	6017	0.013	0.067	0.044	0.070	267.058469	-28.014759	-2169.19	1357.04
7	GUIDE	896535464	9.34	6010	0.025	-0.045	0.077	0.126	266.962550	-28.408631	-864.07	726.40

2.4 Star Slots

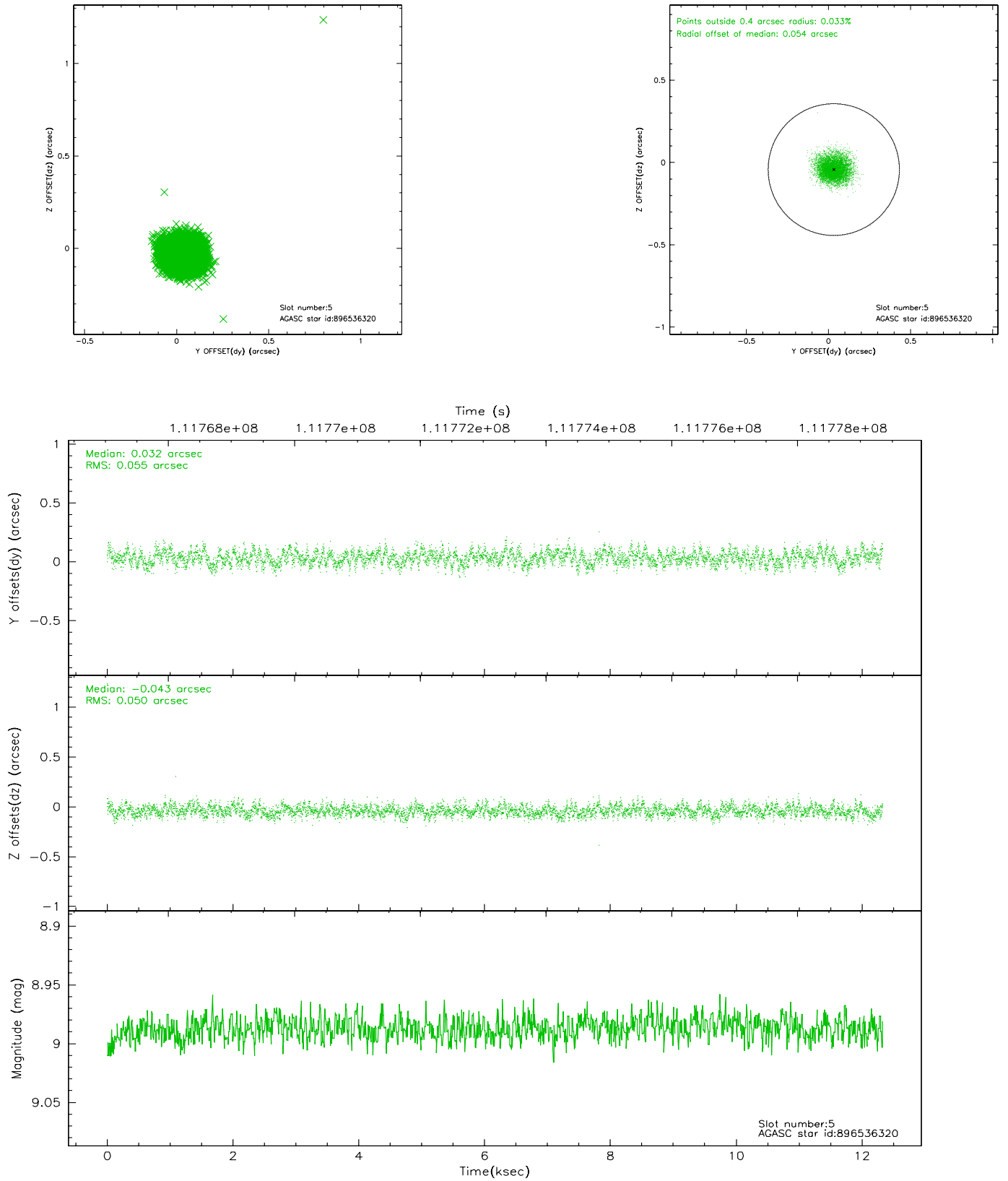
2.4.1 Slot 3



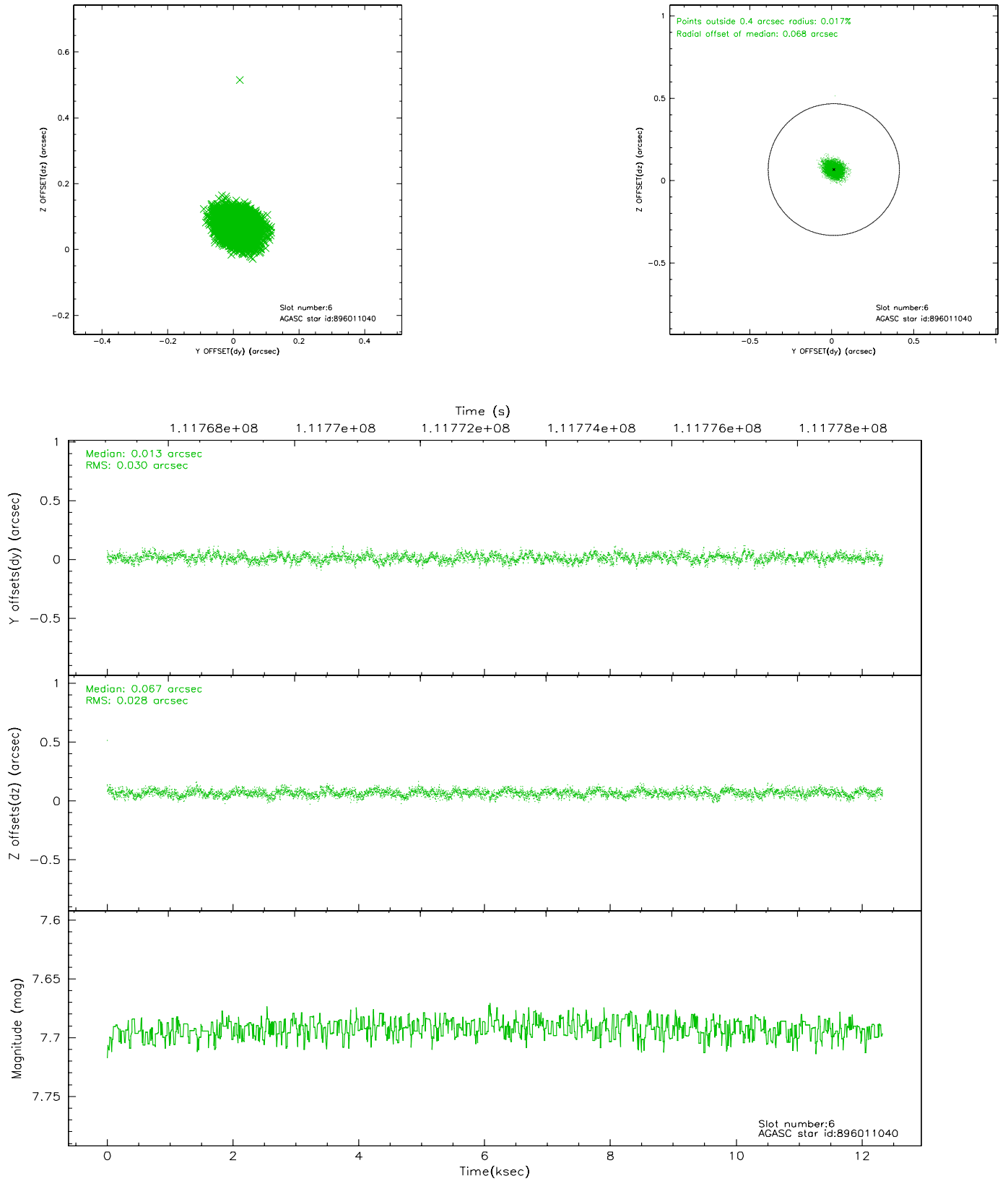
2.4.2 Slot 4



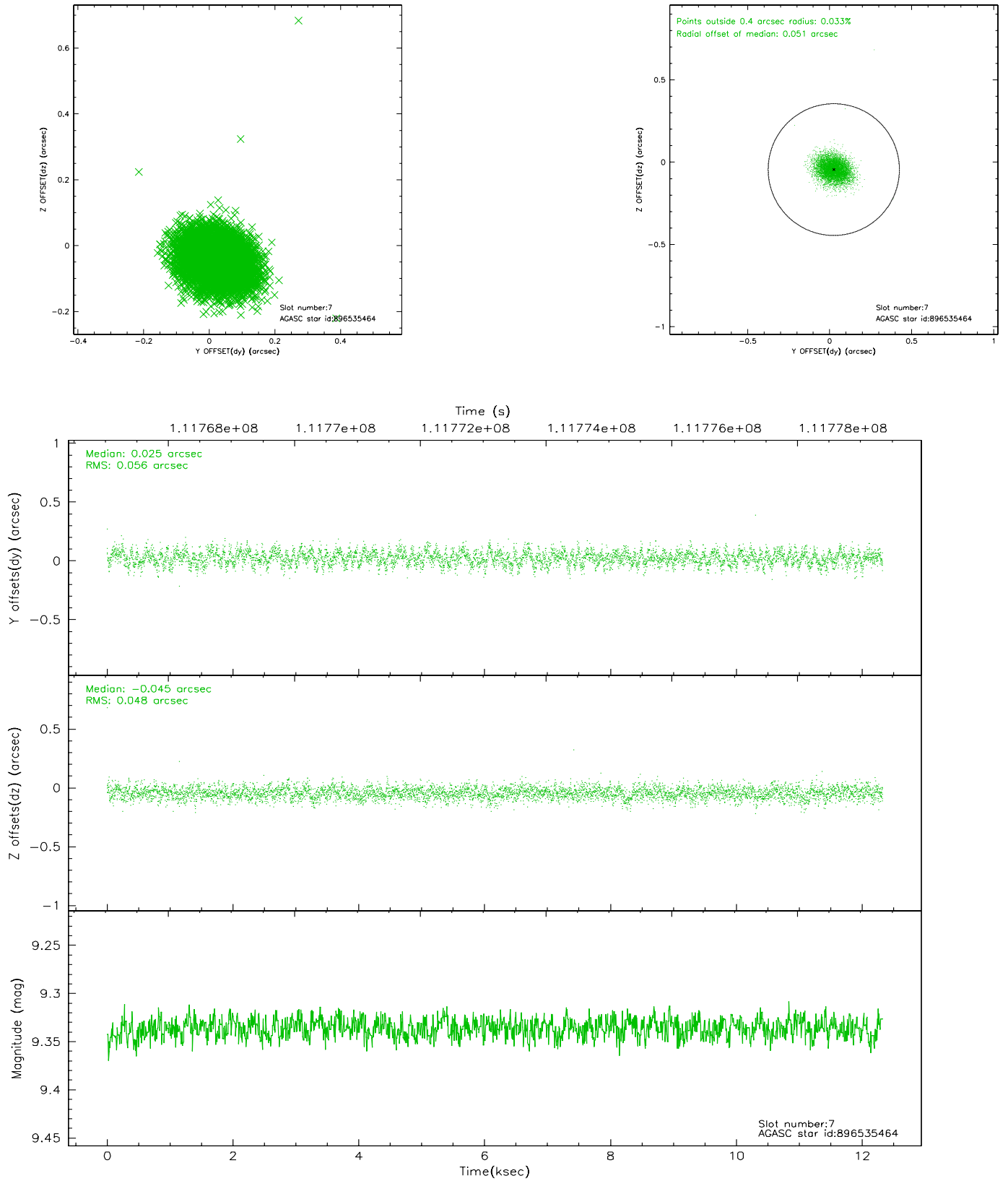
2.4.3 Slot 5



2.4.4 Slot 6

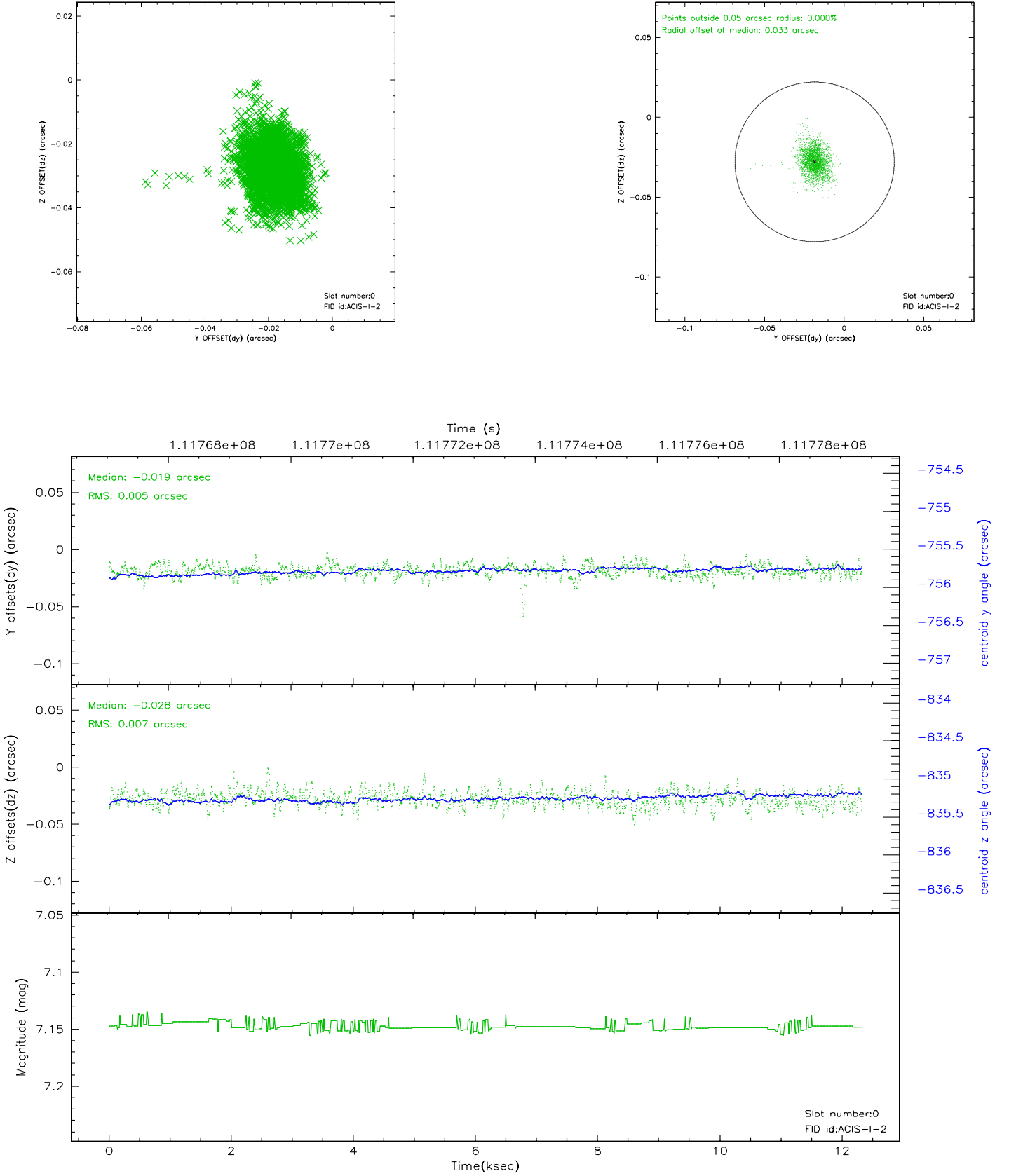


2.4.5 Slot 7

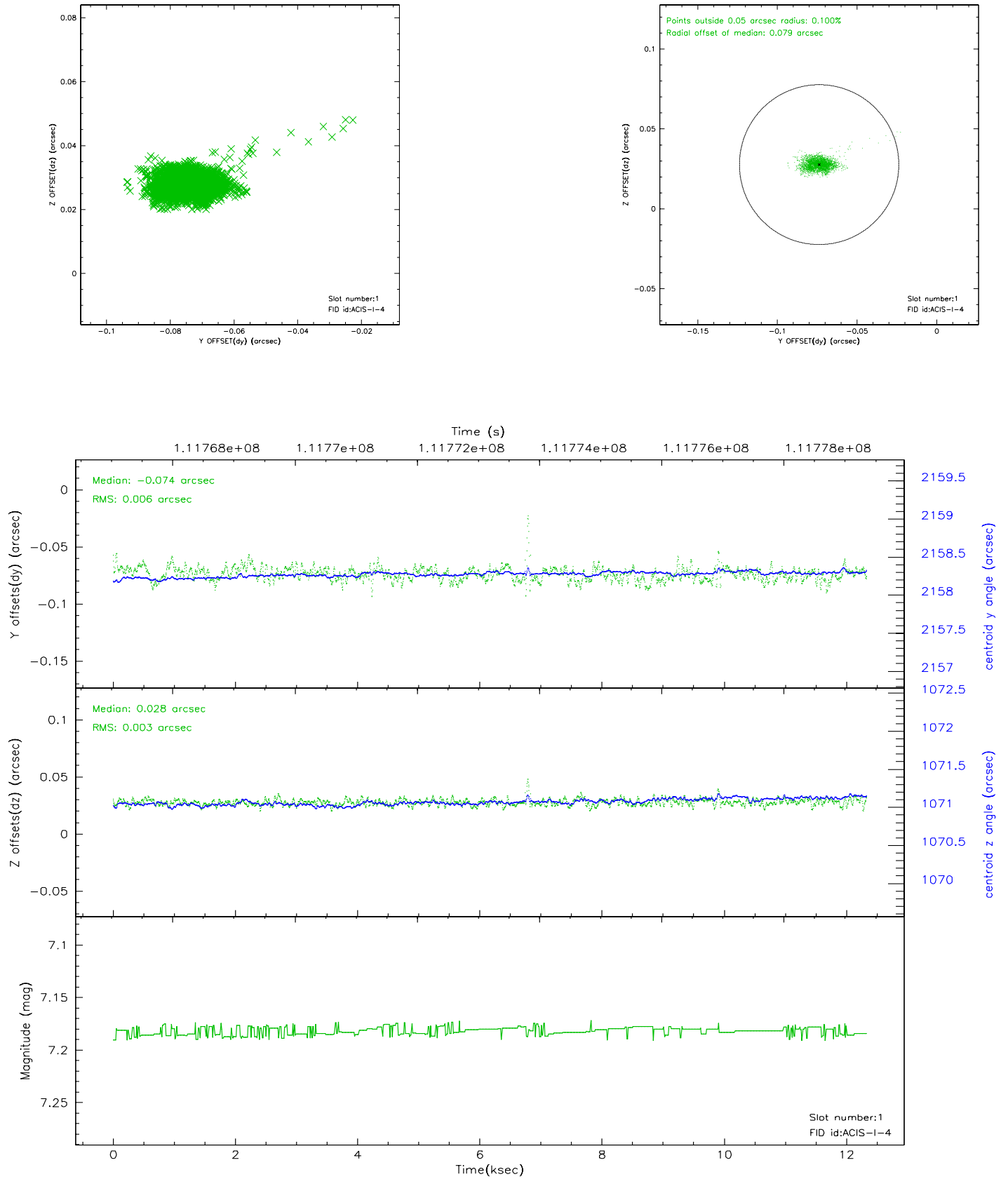


2.5 FID Slots

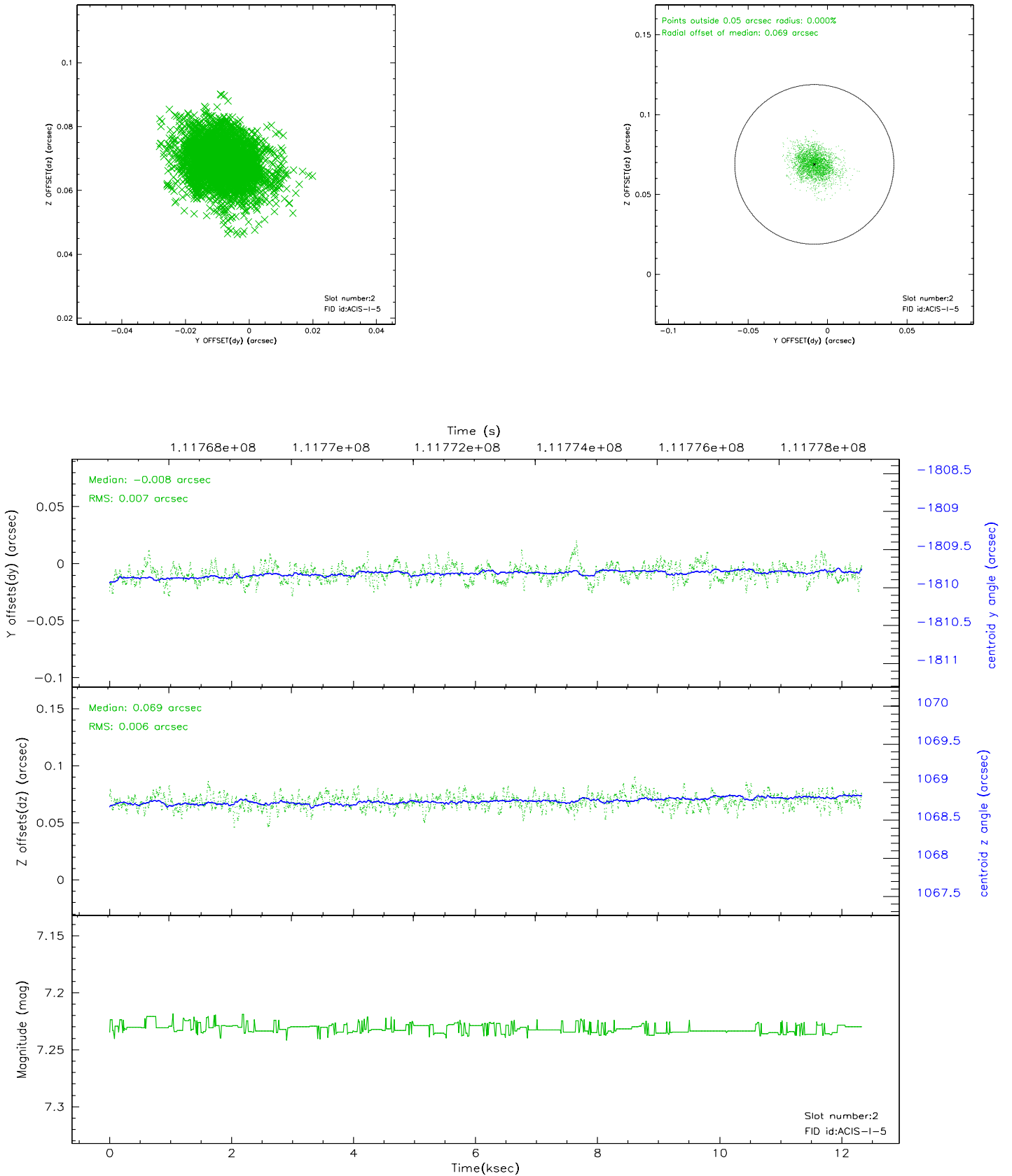
2.5.1 Slot 0



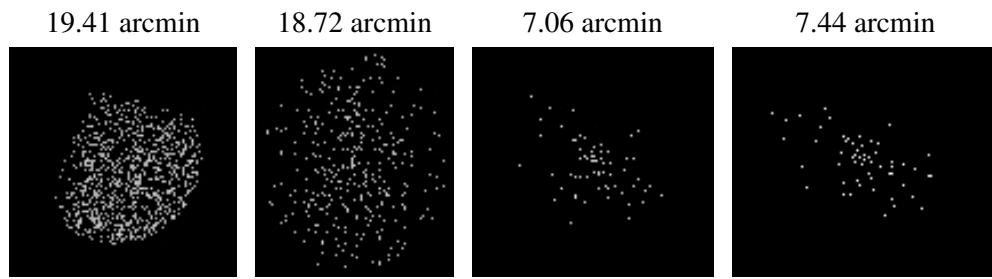
2.5.2 Slot 1



2.5.3 Slot 2



3 Point Sources



A Summary

A.1 Status

V&V Scientist	Beth Sundheim
V&V Date (YYYY-MM-DD)	2006.12.14
V&V Edition	1
V&V Disposition and Status	OK
V&V Charge Time	11.939

A.2 Comments

Roll constraint met.