

V&V Reference Report

L2 ASCDS Version : 7.6.9

Observation 2278 - L2 Version 001
Chandra X-Ray Center

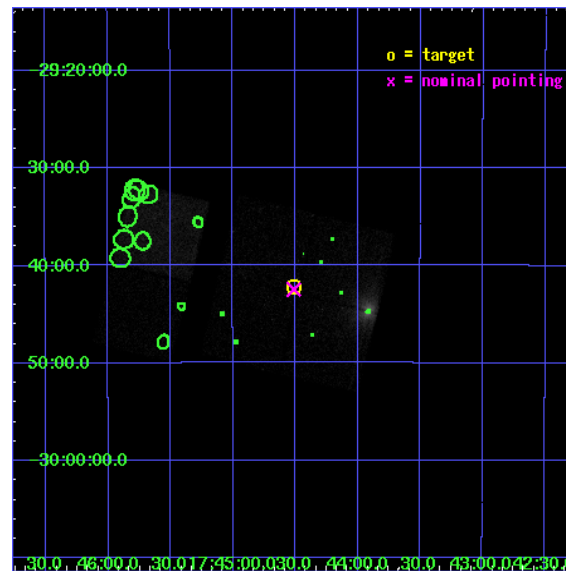
L2 Processing Date : Dec 14 2006

Contents

1	Front	2
2	OBI	3
2.1	OBI	3
2.1.1	Images	3
2.1.2	Bias	3
2.1.3	Parameters	4
2.1.4	Events	4
2.2	Compared Parameters	5
2.3	Aspect	6
2.4	Star Slots	9
2.4.1	Slot 3	9
2.4.2	Slot 4	10
2.4.3	Slot 5	11
2.4.4	Slot 6	12
2.4.5	Slot 7	13
2.5	FID Slots	14
2.5.1	Slot 0	14
2.5.2	Slot 1	15
2.5.3	Slot 2	16
3	Point Sources	17
A	Summary	18
A.1	Status	18
A.2	Comments	18

1 Front

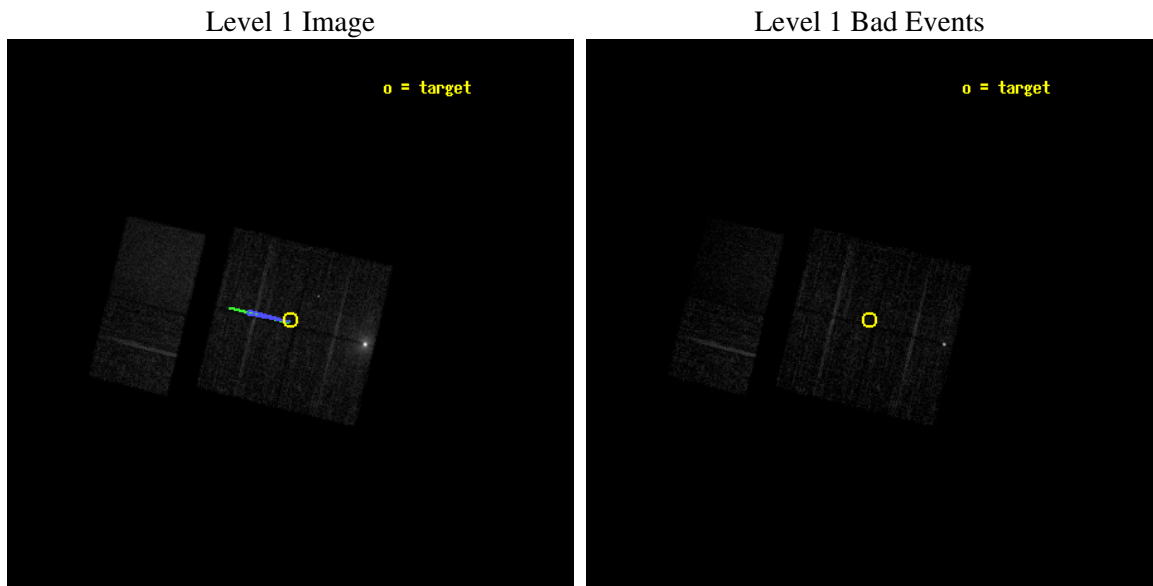
seq_num	900105
obs_id	2278
title	CHANDRA SURVEY OF THE GALACTIC RIDGE AROUND THE MILKY WAY CENTER
observer	Prof. Q. Daniel Wang
object	GCS 25
dtcycle	0
cycle	P
ra_targ	266.1288
dec_targ	-29.7033
ra_nom	266.12795732943
dec_nom	-29.70795202923
roll_nom	283.80727649788
revision	2
ontime	11760.000010952
livetime	11611.087809792
ontime0	11760.000010952
ontime1	11760.000010952
ontime2	11760.000010952
ontime3	11760.000010952
ontime6	11758.602944806
ontime7	11758.64398481
l2events	81635



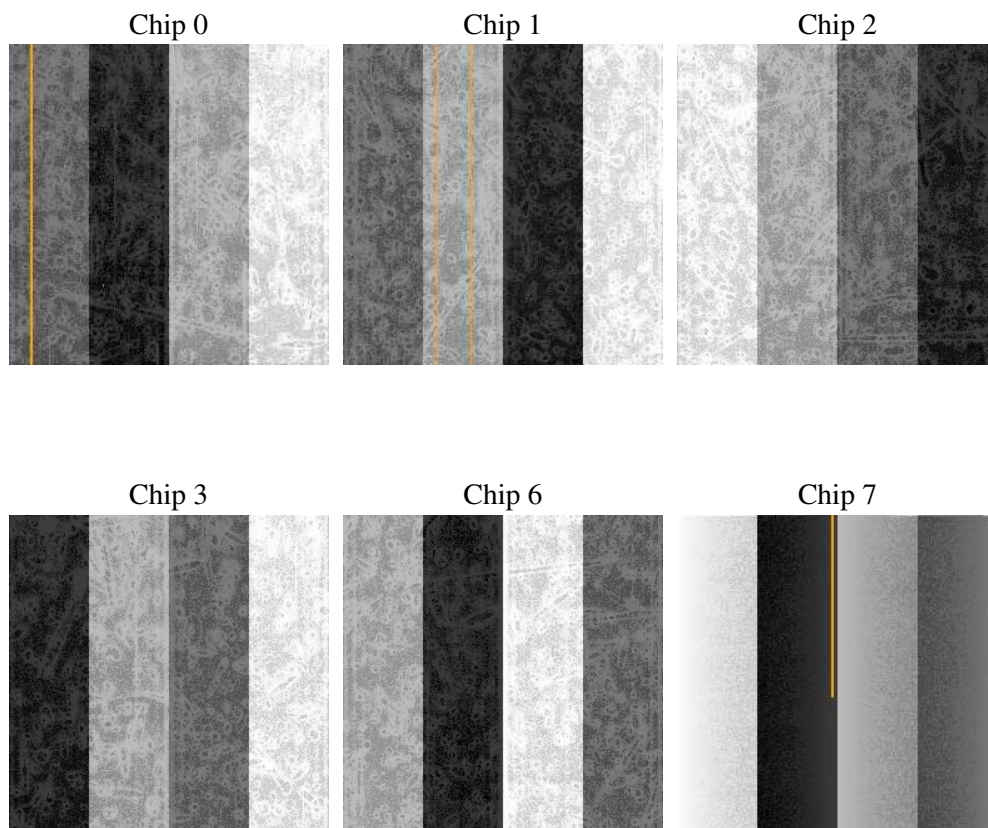
2 OBI

2.1 OBI

2.1.1 Images



2.1.2 Bias



2.1.3 Parameters

obi_num	1
ascdsver	7.6.9
caldbver	3.2.4
date	2006-12-14T14:35:27
revision	2

sched_exp_time	12000.000000
ontime	11764.855140537
ontime0	11764.855140537
ontime1	11764.855140537
ontime2	11764.855140537
ontime3	11764.855140537
ontime6	11761.61415039
ontime7	11761.61415039
l1events	236827

2.1.4 Events

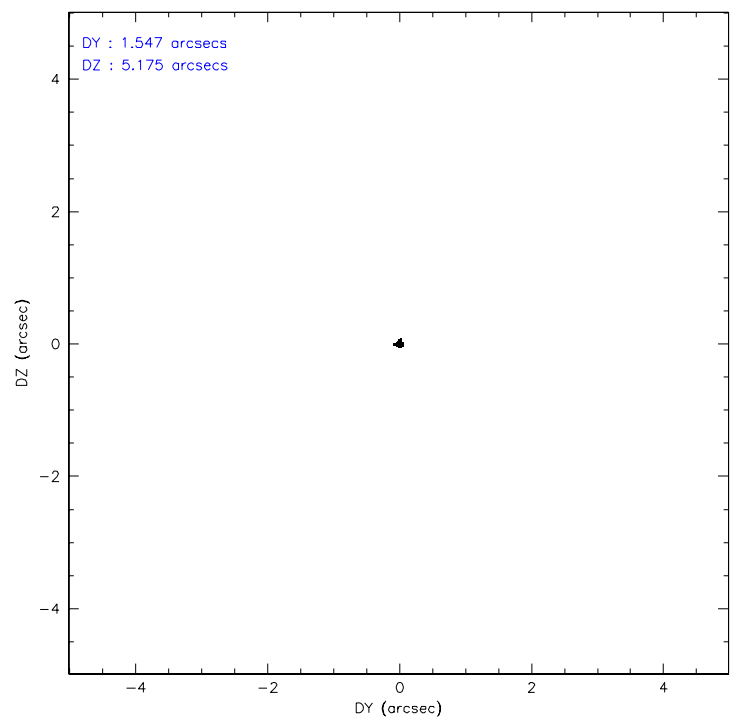
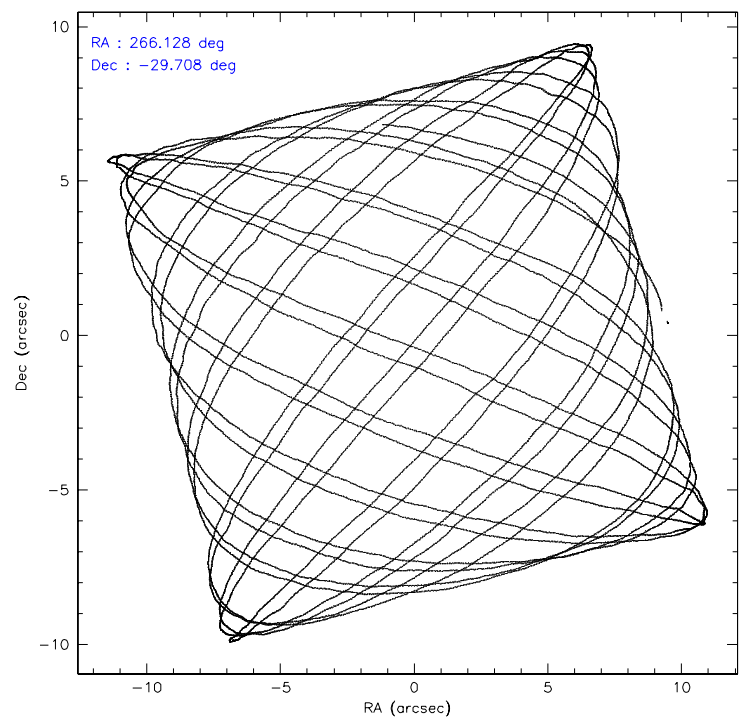
	ccd 0	ccd 1	ccd 2	ccd 3	ccd 6	ccd 7
level 1 events	51277	49599	31434	32846	32103	39568
rejected events	26220	25595	25779	26727	26613	19240
rejected %	51%	51%	82%	81%	82%	48%

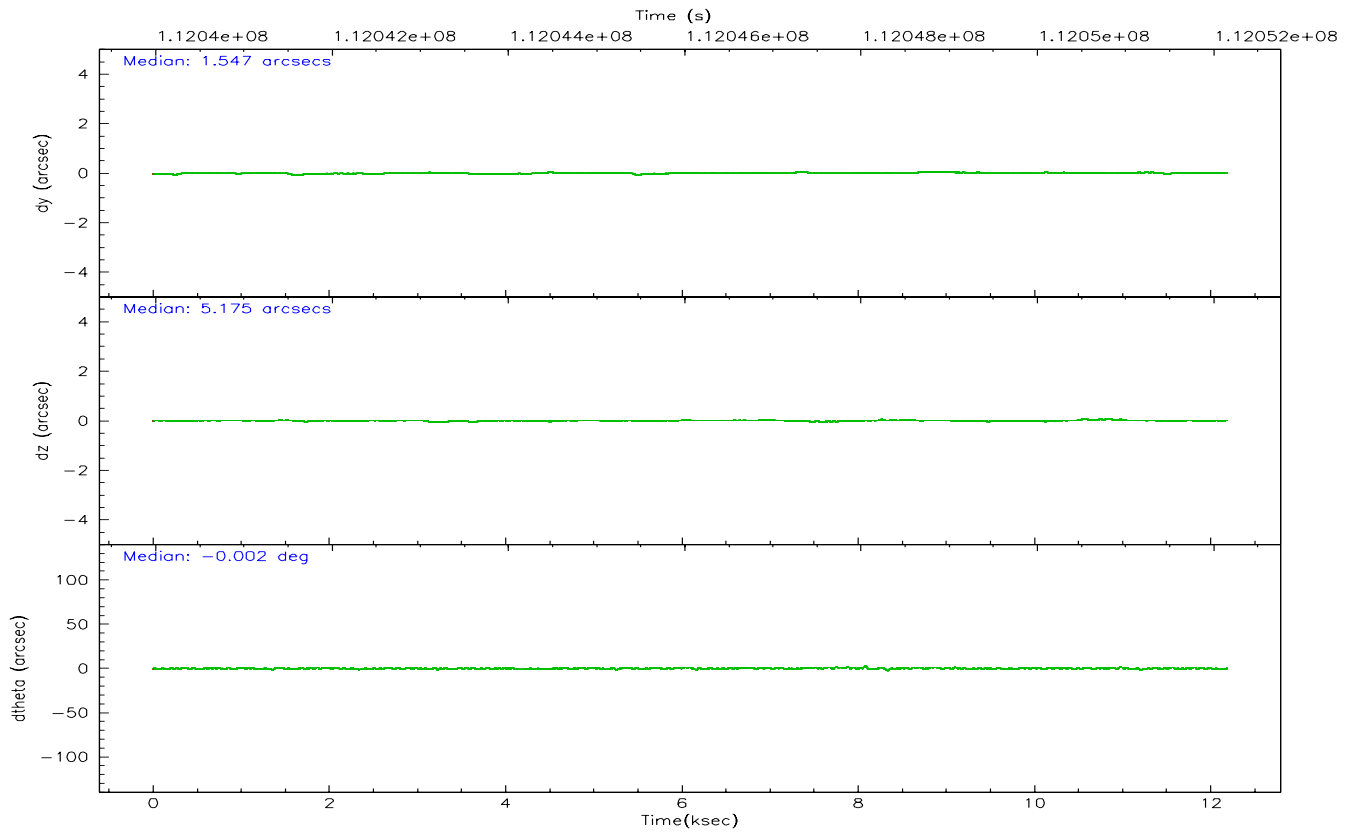
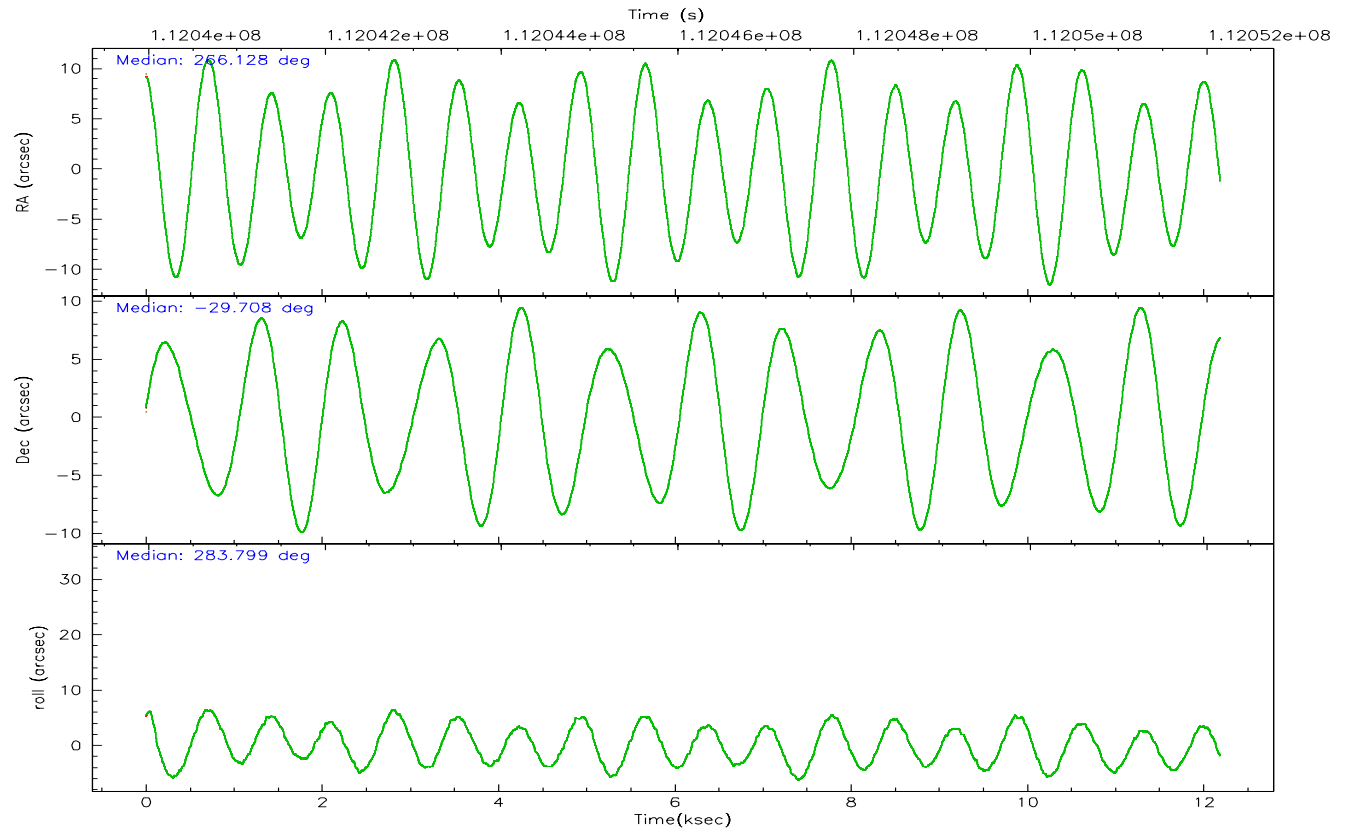
	ccd 0	ccd 1	ccd 2	ccd 3	ccd 6	ccd 7
grade 0 events	14323	13924	2868	2926	2438	1457
	27%	28%	9%	8%	7%	3%
grade 1 events	632	495	32	30	28	30
	1%	0%	0%	0%	0%	0%
grade 2 events	4327	4014	1066	1233	1124	5156
	8%	8%	3%	3%	3%	13%
grade 3 events	1629	1517	450	512	479	1154
	3%	3%	1%	1%	1%	2%
grade 4 events	1588	1631	467	476	460	1261
	3%	3%	1%	1%	1%	3%
grade 5 events	1790	1817	1136	1347	1445	3472
	3%	3%	3%	4%	4%	8%
grade 6 events	3213	2922	811	974	991	11303
	6%	5%	2%	2%	3%	28%
grade 7 events	23775	23279	24604	25348	25138	15735
	46%	46%	78%	77%	78%	39%

2.2 Compared Parameters

Parameter	Planned	Actual	Parameter	Planned	Actual
Instrument	ACIS	ACIS	Obspar format version number	6	6
Detector	ACIS-012367	ACIS-012367	Obspar file type	PREDICTED	ACTUAL
Grating	NONE	NONE	Obspar update status	NONE	UPDATED
Data mode	FAINT	FAINT	Number of optional ACIS chips dropped	0	0
Observation mode	POINTING	POINTING	On-chip summing requested	N	N
Pointing RA	266.106042	266.1279573294304	Subarray requested	NONE	NONE
Pointing Dec	-29.688198	-29.70795202922995	Alternating exposures requested	N	N
Pointing Roll	283.587728	283.807276497876	Primary exposure time	0.000000	3.2
Roll angle	283.600000	283.600000			
Roll tolerance	2.000000	2.000000			
Roll constraint allows 180D rotation	N	N			
SIM focus pos (mm)	-0.782348	-0.7809083437167272			
SIM defocus (mm)	0	0.001439871863259334			
SIM translation stage pos (mm)	-233.592463	-233.5874344608287			
SIM translation stage offset (mm)	0	-0.005018542100998502			
Observation start time	112040156.184000	112039780.42342			
Observation start date	2001-07-20T18:14:52	2001-07-20T18:09:40			
Observation end time	112052156.184000	112052290.03641			
Observation end date	2001-07-20T21:34:52	2001-07-20T21:38:10			
Read mode	TIMED	TIMED			

2.3 Aspect



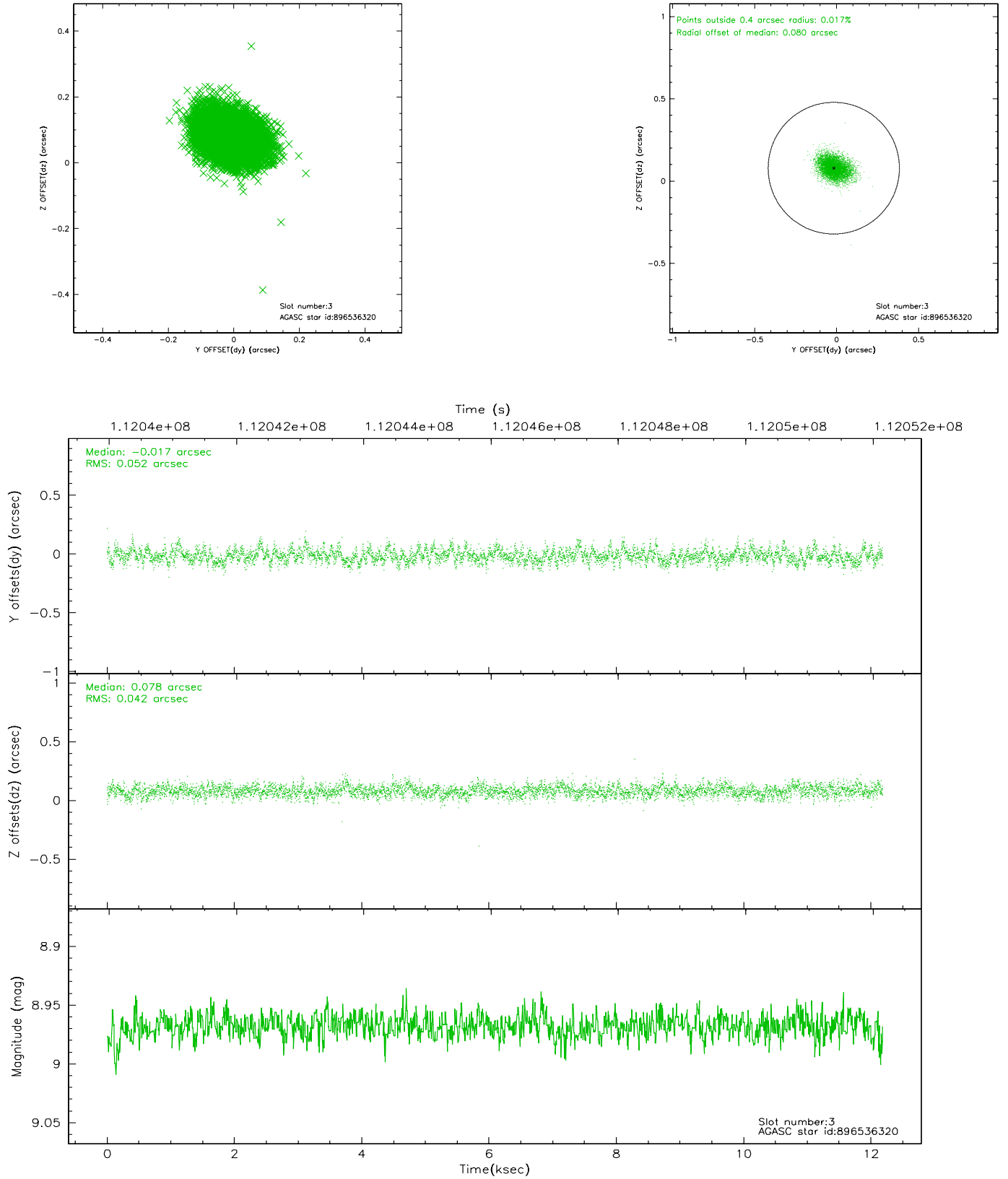


Slot Statistics

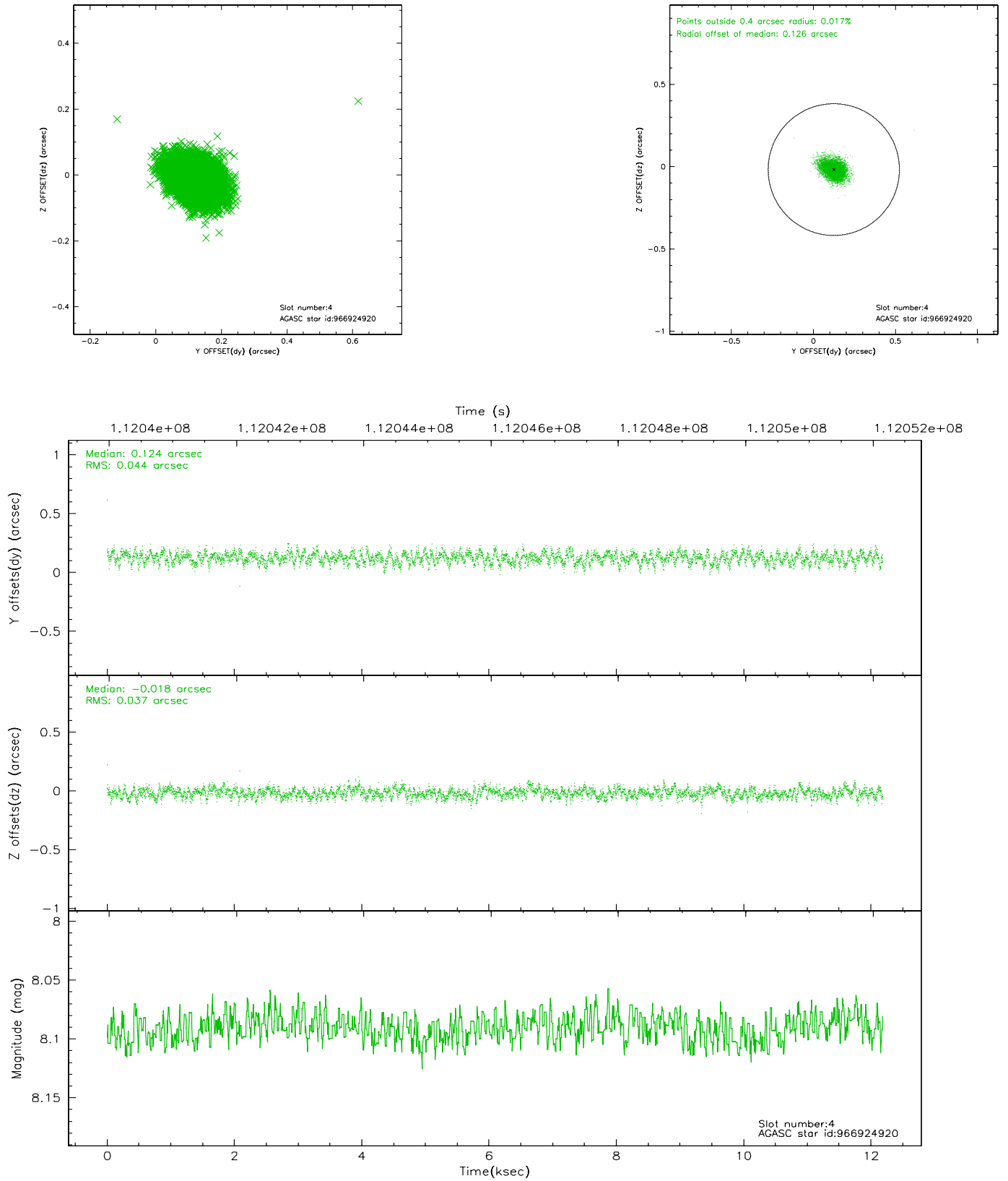
slot	status	id	mag	n_pts	med_dy	med_dz	dr1	dr2	ra	dec	mean_y	mean_z
0	FID	ACIS-I-3	7.45	2972	-0.014	0.207	0.008	0.013	0.000000	0.000000	55.69	-961.54
1	FID	ACIS-I-4	7.19	2972	-0.071	-0.074	0.006	0.009	0.000000	0.000000	2158.19	1070.97
2	FID	ACIS-I-5	7.23	2973	-0.013	-0.064	0.007	0.011	0.000000	0.000000	-1809.20	1069.33
3	GUIDE	896536320	8.97	5945	-0.017	0.078	0.070	0.117	266.369048	-29.307026	-1138.92	1125.17
4	GUIDE	966924920	8.09	5946	0.124	-0.018	0.060	0.098	265.875401	-30.176961	1542.68	-1110.32
5	GUIDE	896403224	8.27	5874	-0.088	-0.019	0.069	0.109	265.612825	-29.438915	-1231.86	-1292.84
6	GUIDE	896541168	8.14	5945	0.050	-0.060	0.050	0.081	266.319970	-29.850801	726.50	511.95
7	GUIDE	896537776	7.52	5945	-0.067	0.019	0.063	0.094	266.655684	-29.665673	329.10	1690.03

2.4 Star Slots

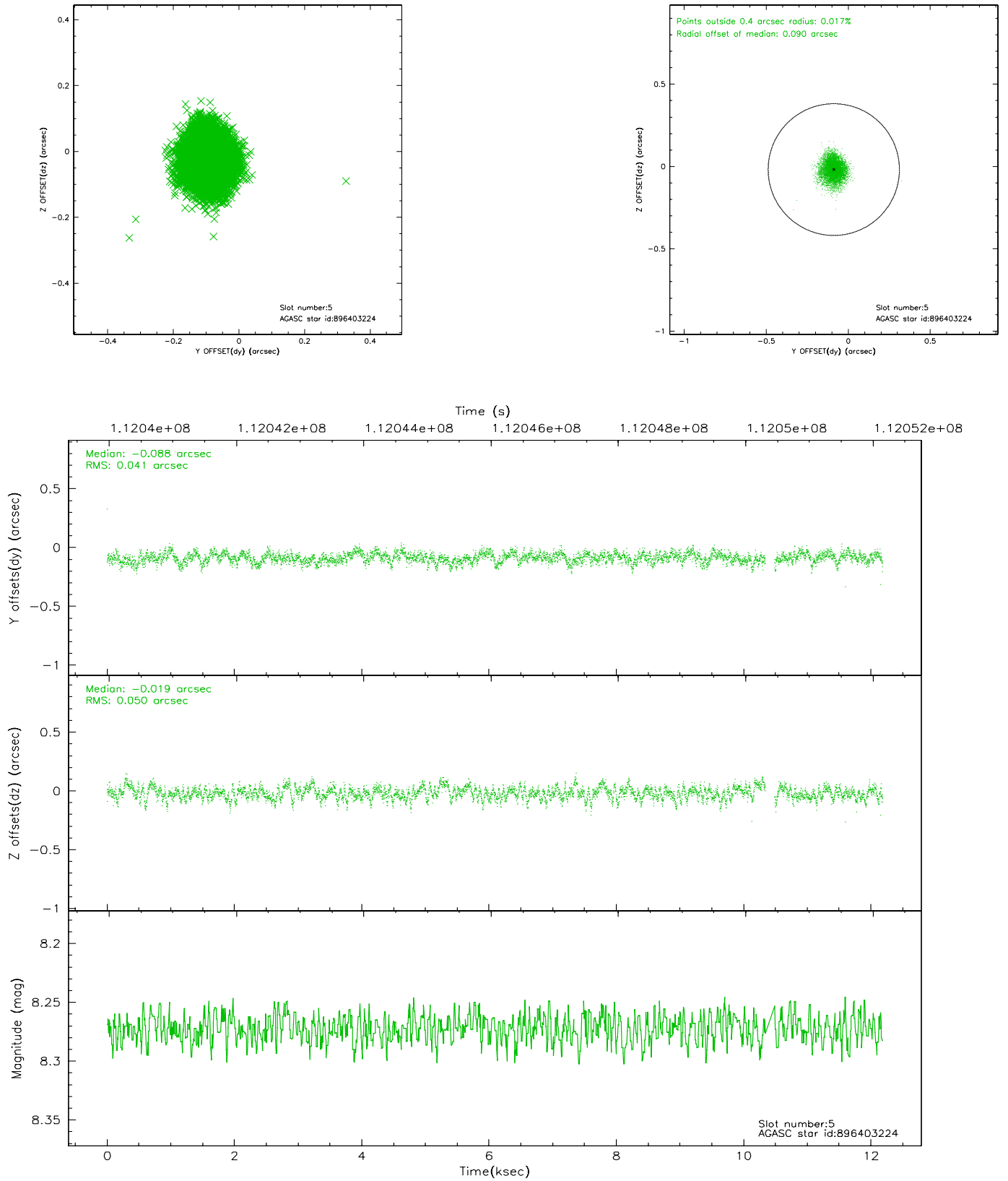
2.4.1 Slot 3



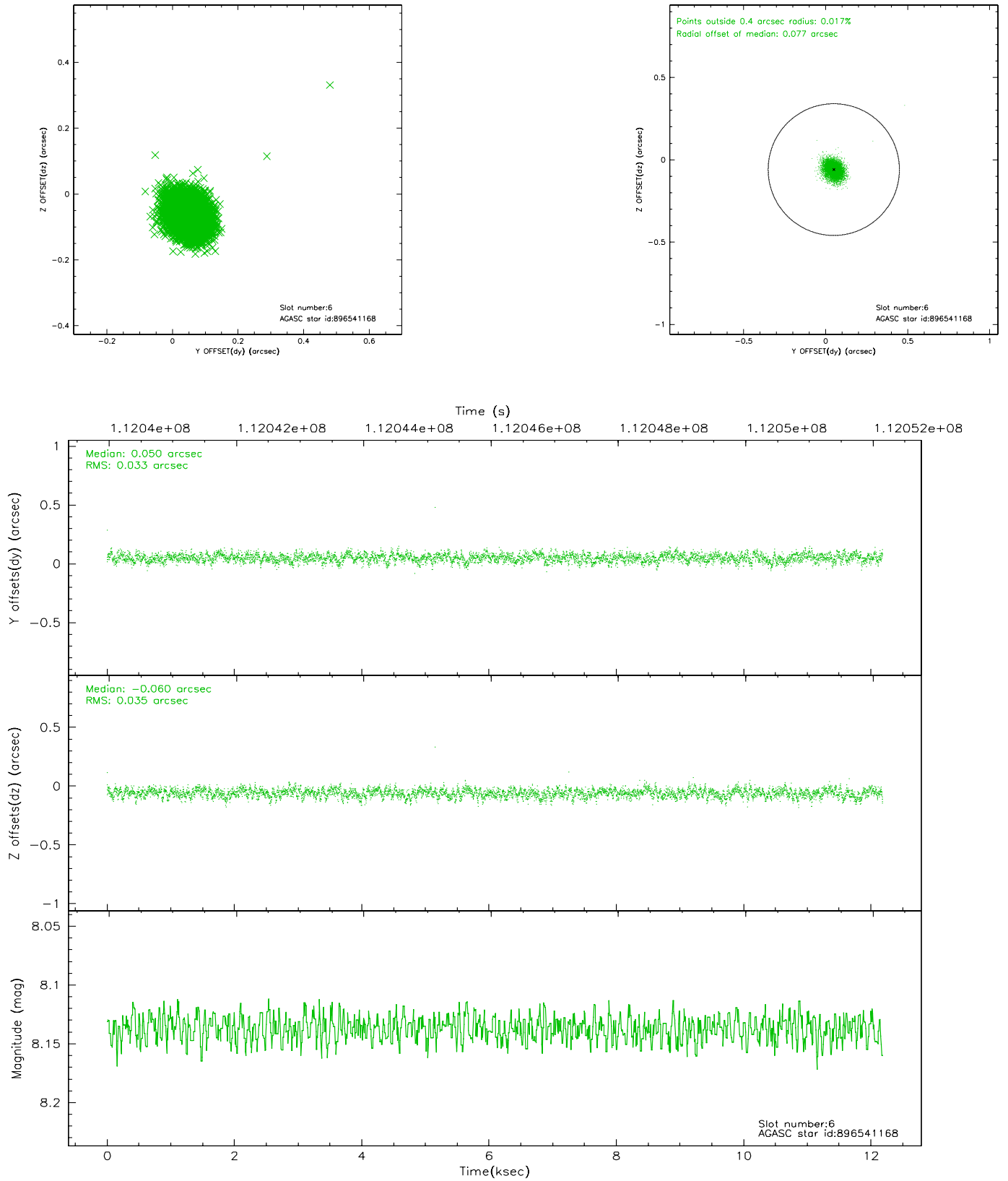
2.4.2 Slot 4



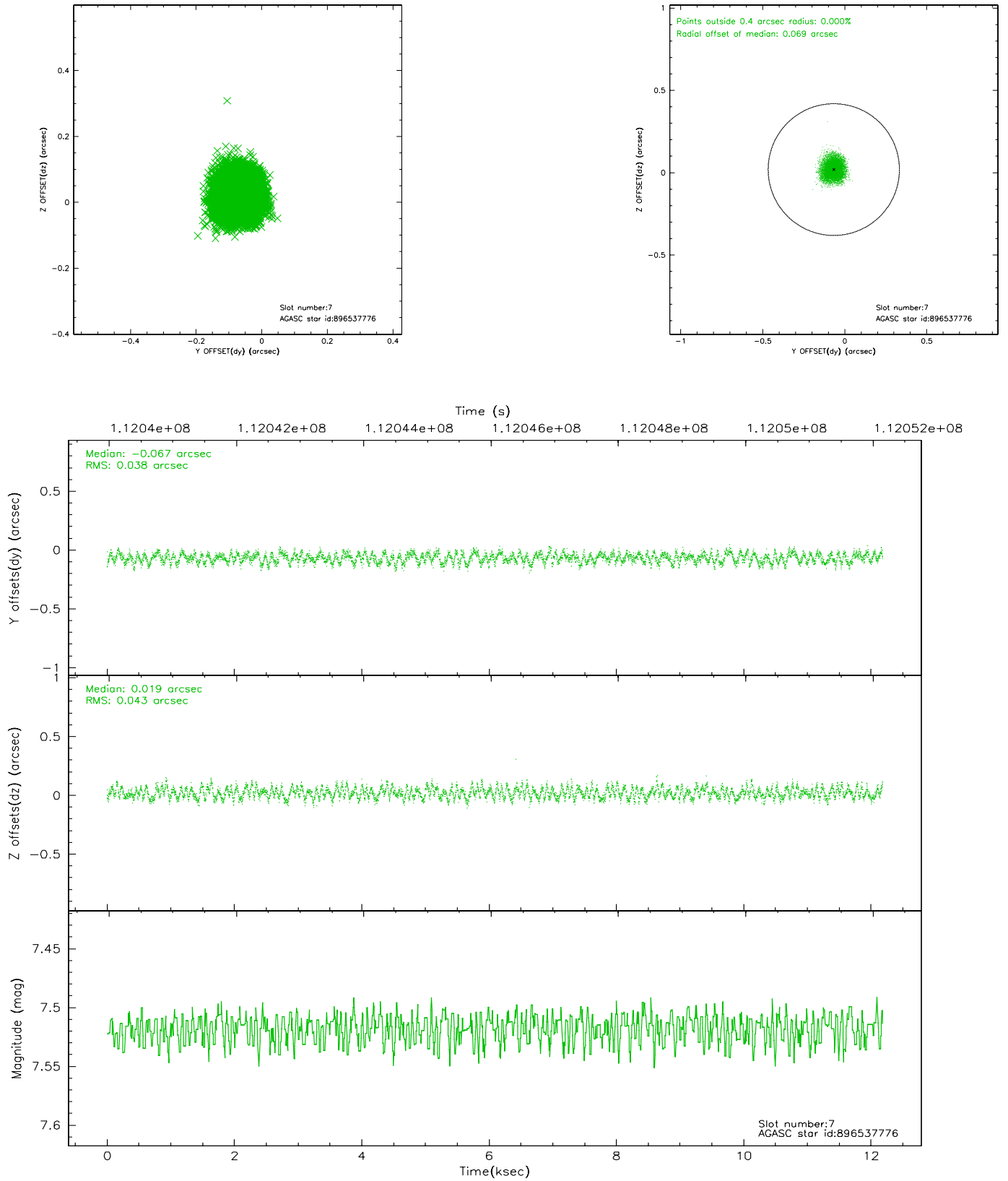
2.4.3 Slot 5



2.4.4 Slot 6

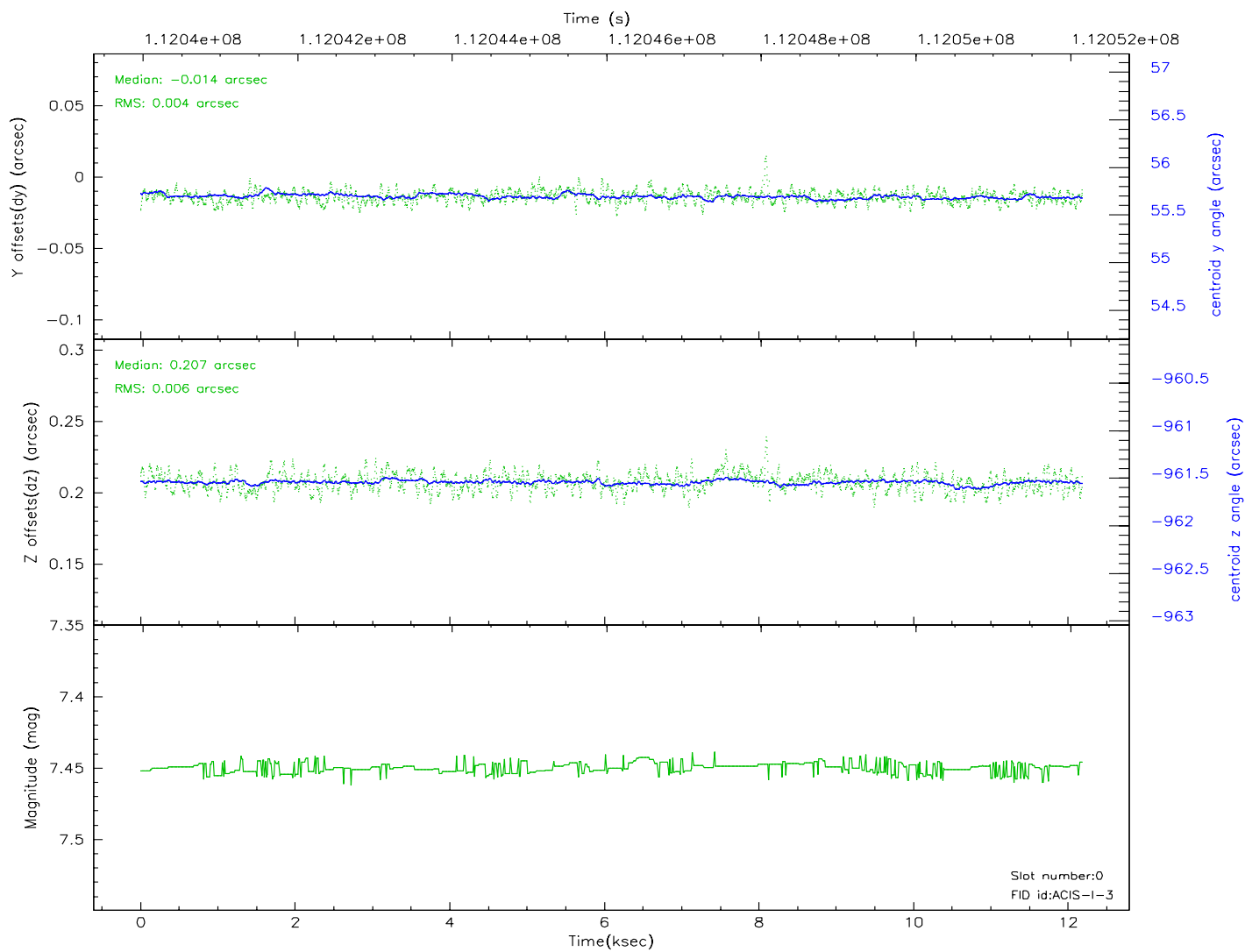
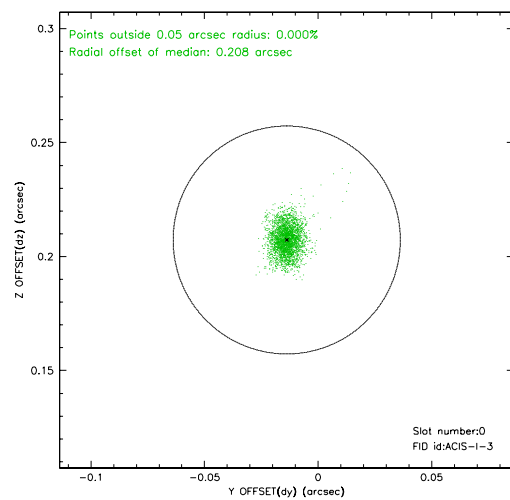
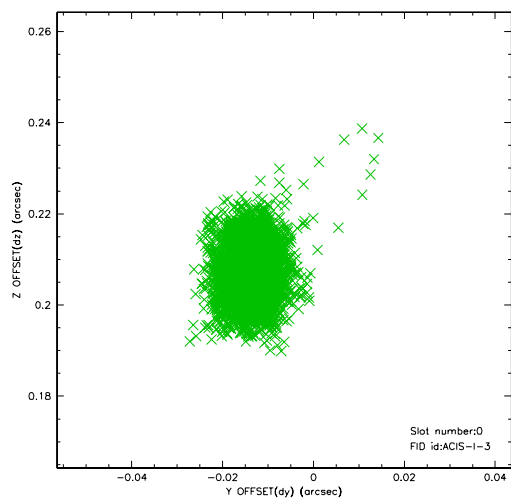


2.4.5 Slot 7

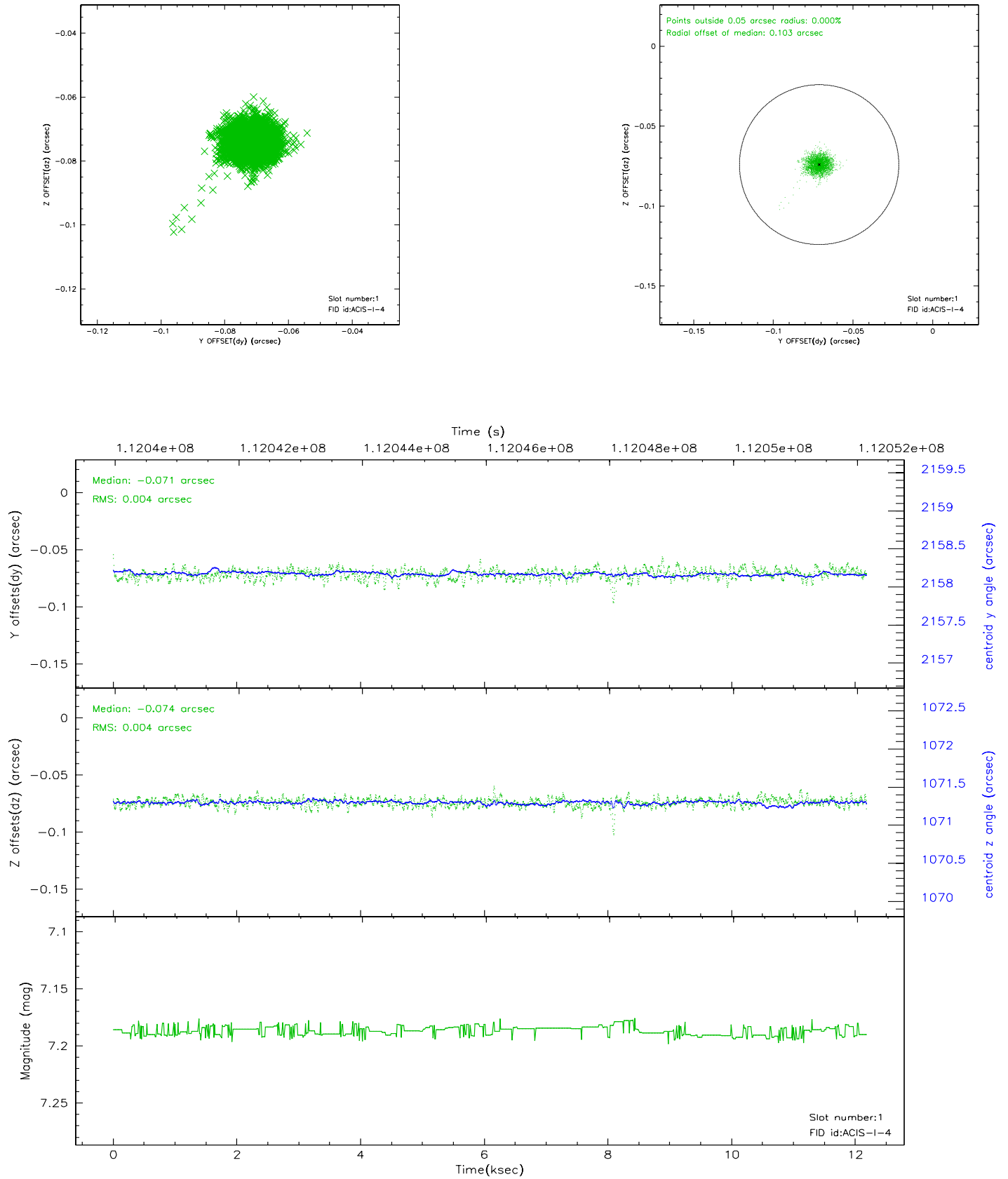


2.5 FID Slots

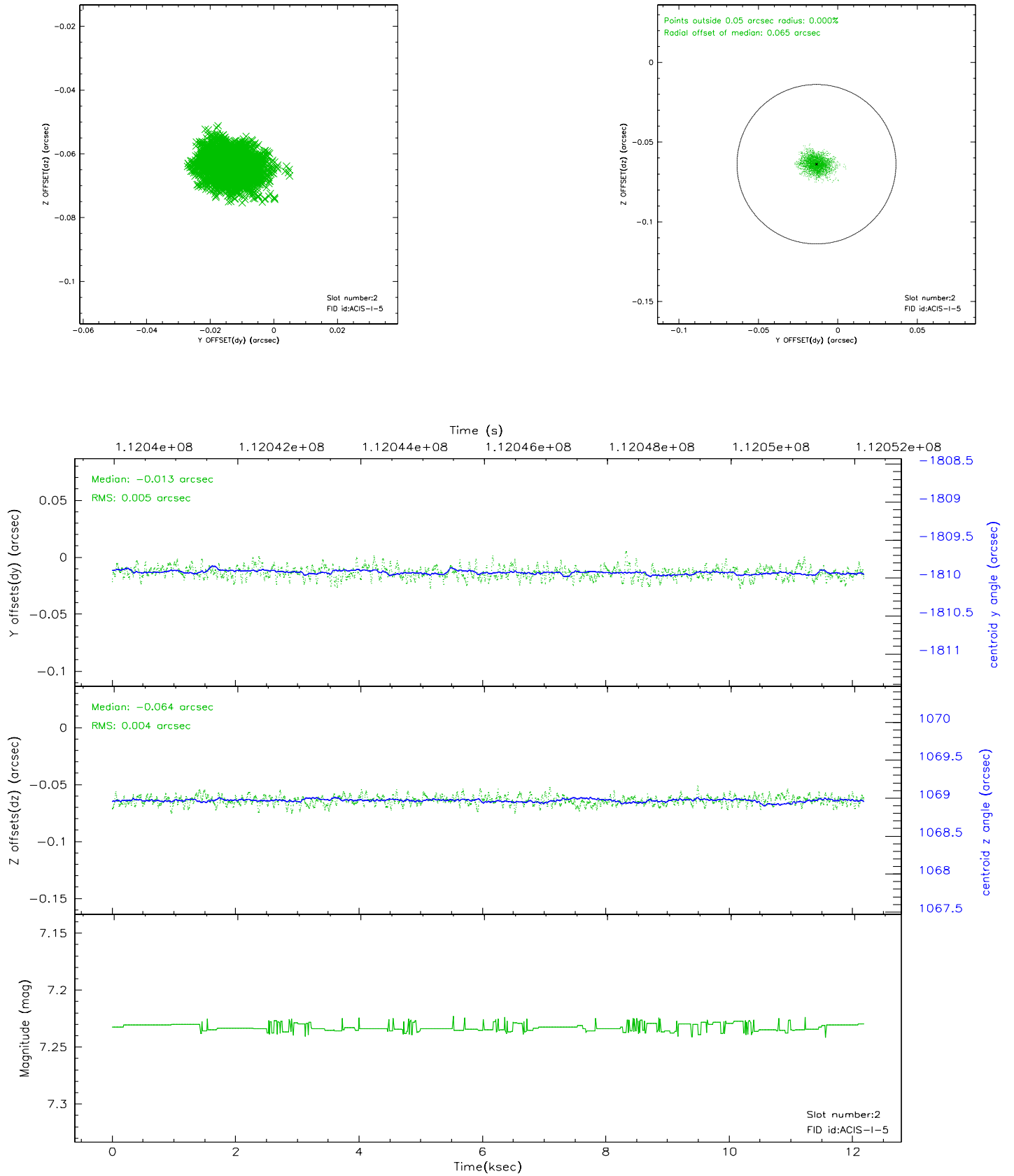
2.5.1 Slot 0



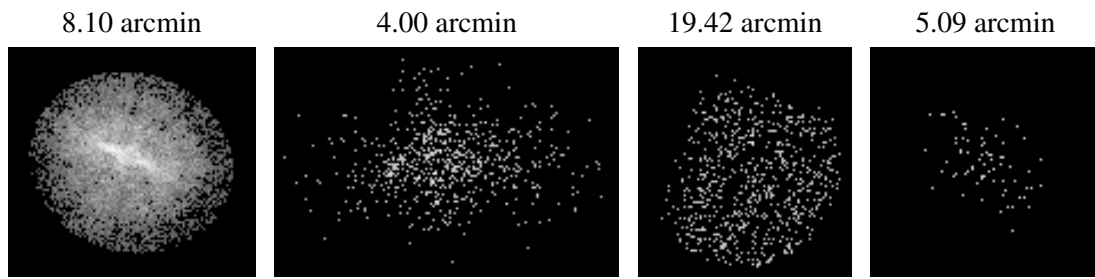
2.5.2 Slot 1



2.5.3 Slot 2



3 Point Sources



A Summary

A.1 Status

V&V Scientist	Jen Lauer
V&V Date (YYYY-MM-DD)	2006.12.14
V&V Edition	1
V&V Disposition and Status	OK
V&V Charge Time	11.8

A.2 Comments

Roll constraint met.