

V&V Reference Report

L2 ASCDS Version : 7.6.10

Observation 2188 - L2 Version 001
Chandra X-Ray Center

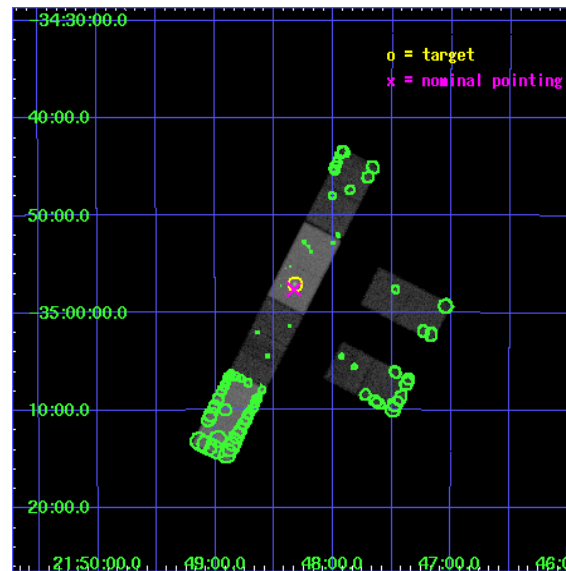
L2 Processing Date : Jan 10 2007

Contents

1	Front	2
2	OBI	3
2.1	OBI	3
2.1.1	Images	3
2.1.2	Bias	3
2.1.3	Parameters	4
2.1.4	Events	4
2.2	Compared Parameters	5
2.3	Aspect	6
2.4	Star Slots	9
2.4.1	Slot 3	9
2.4.2	Slot 4	10
2.4.3	Slot 5	11
2.4.4	Slot 6	12
2.4.5	Slot 7	13
2.5	FID Slots	14
2.5.1	Slot 0	14
2.5.2	Slot 1	15
2.5.3	Slot 2	16
3	Point Sources	17
A	Summary	18
A.1	Status	18
A.2	Comments	18

1 Front

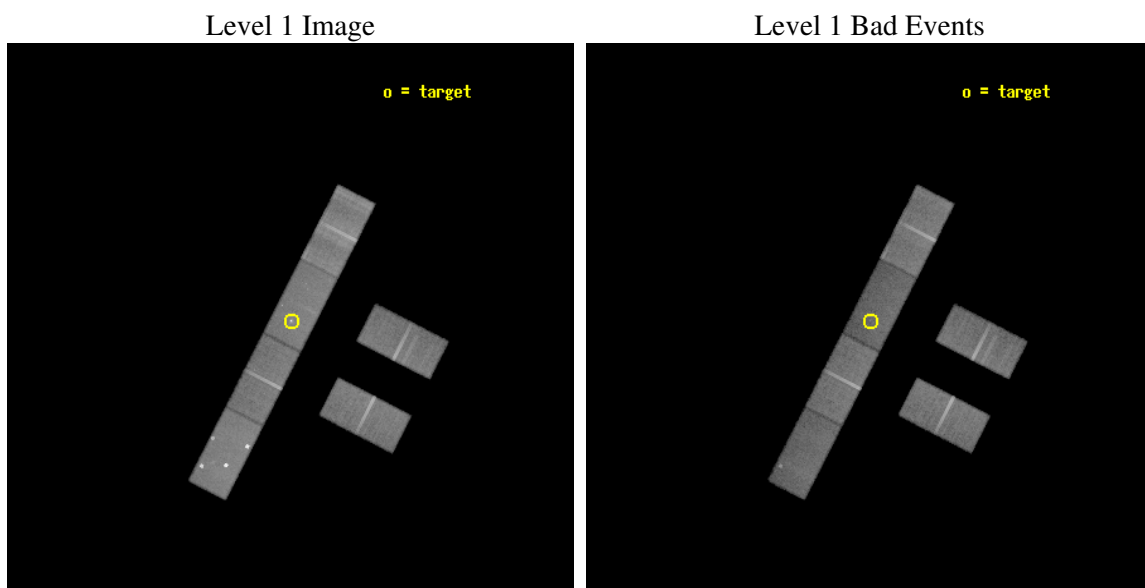
seq_num	700378
obs_id	2188
title	USING CHANDRA TO ELUCIDATE THE STARBURST-AGN CONNECTION
observer	Dr. Nancy Levenson
object	NGC 7130
dtcycle	0
cycle	P
ra_targ	327.08
dec_targ	-34.951056
ra_nom	327.08344472949
dec_nom	-34.960359725851
roll_nom	297.14549801812
revision	2
ontime	39522.599934563
livetime	38641.572090891
ontime2	39522.599934563
ontime3	39520.758954376
ontime5	39522.599934563
ontime6	39522.599934563
ontime7	39522.599934563
ontime8	39522.599934563
l2events	244382



2 OBI

2.1 OBI

2.1.1 Images

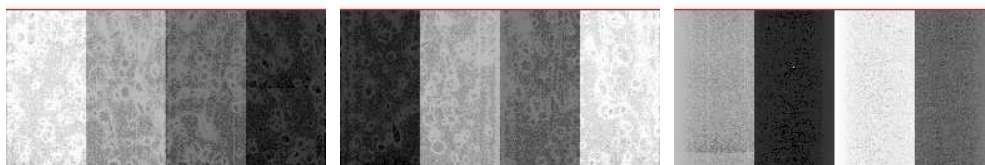


2.1.2 Bias

Chip 2

Chip 3

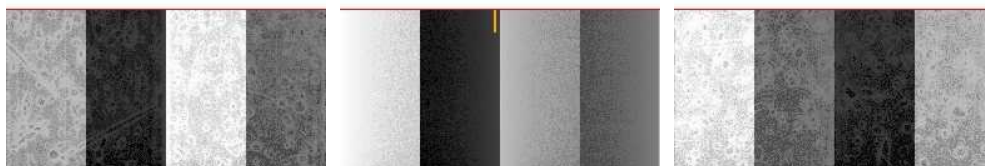
Chip 5



Chip 6

Chip 7

Chip 8



2.1.3 Parameters

obi_num	1
ascdsver	7.6.10
caldsver	3.3.0
date	2007-01-11T02:46:43
revision	2

sched_exp_time	39300.000000
ontime	39522.599934563
ontime2	39522.599934563
ontime3	39520.758954376
ontime5	39522.599934563
ontime6	39522.599934563
ontime7	39522.599934563
ontime8	39522.599934563
l1events	1127549

2.1.4 Events

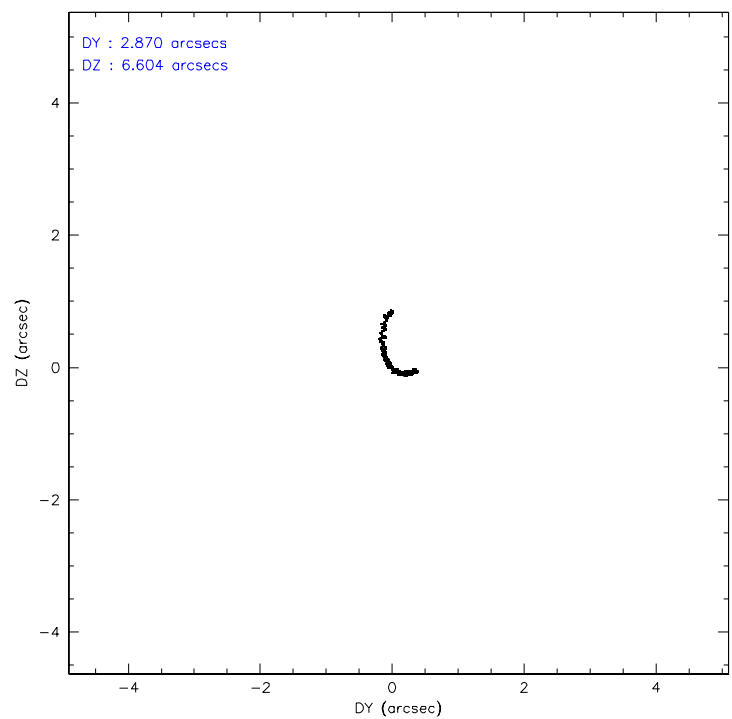
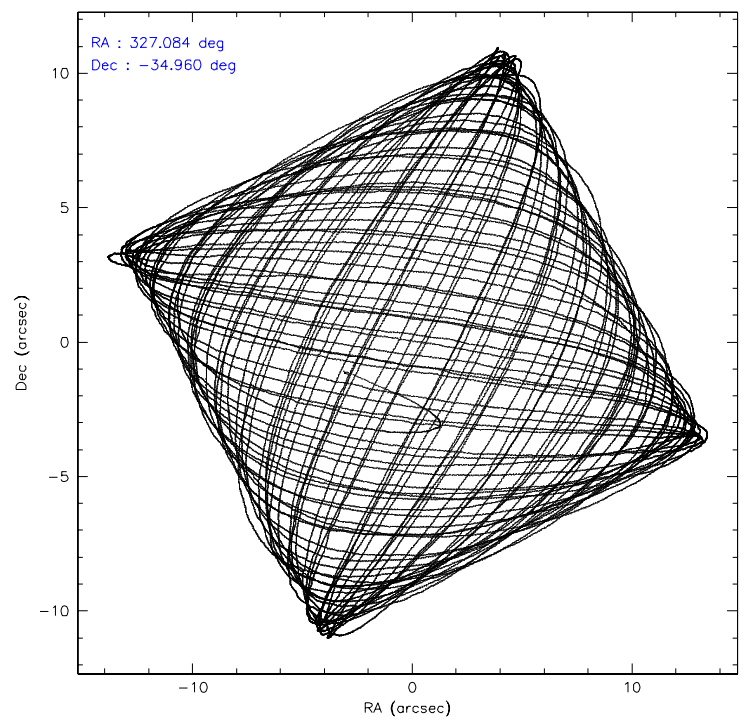
	ccd 2	ccd 3	ccd 5	ccd 6	ccd 7	ccd 8
level 1 events	173500	160157	222991	164681	180547	225673
rejected events	152272	140391	99494	143938	94766	161255
rejected %	87%	87%	44%	87%	52%	71%

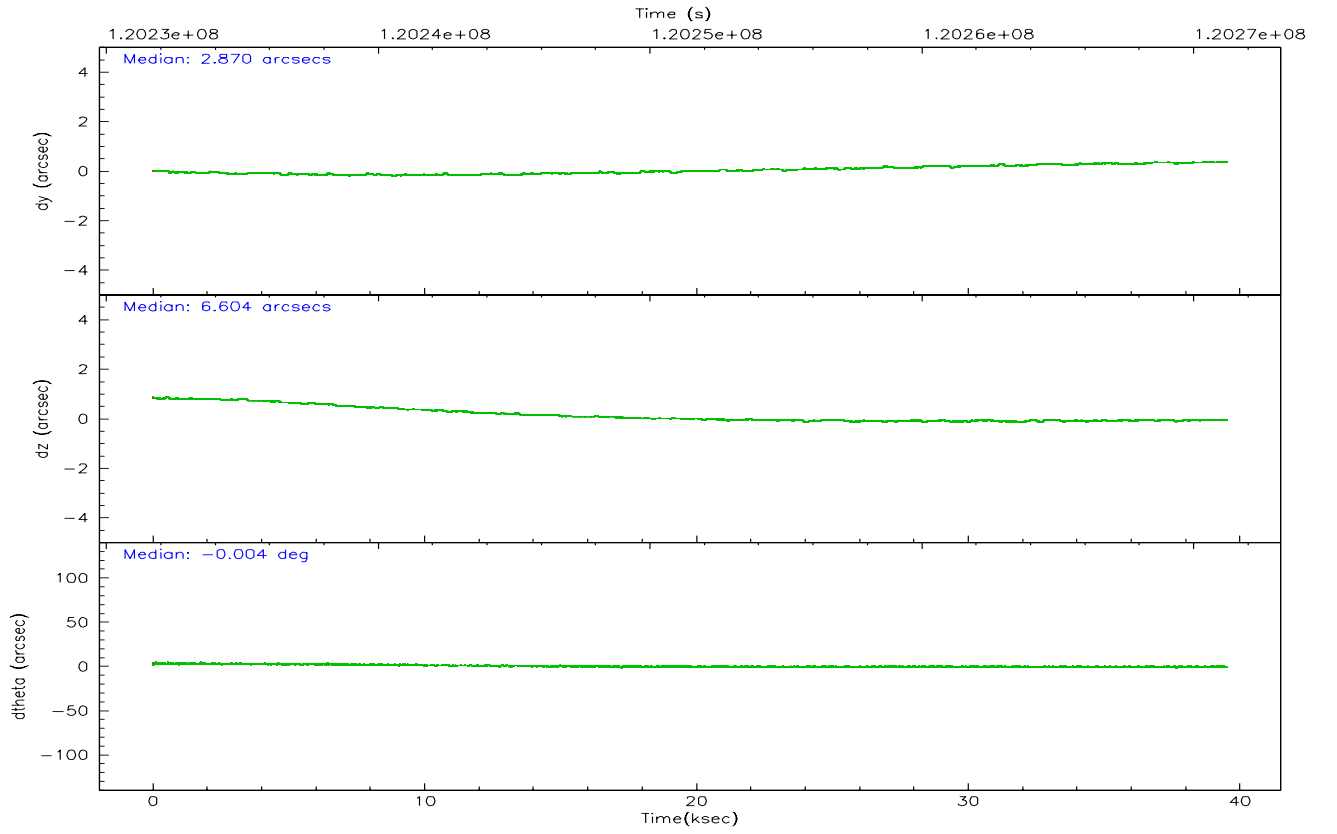
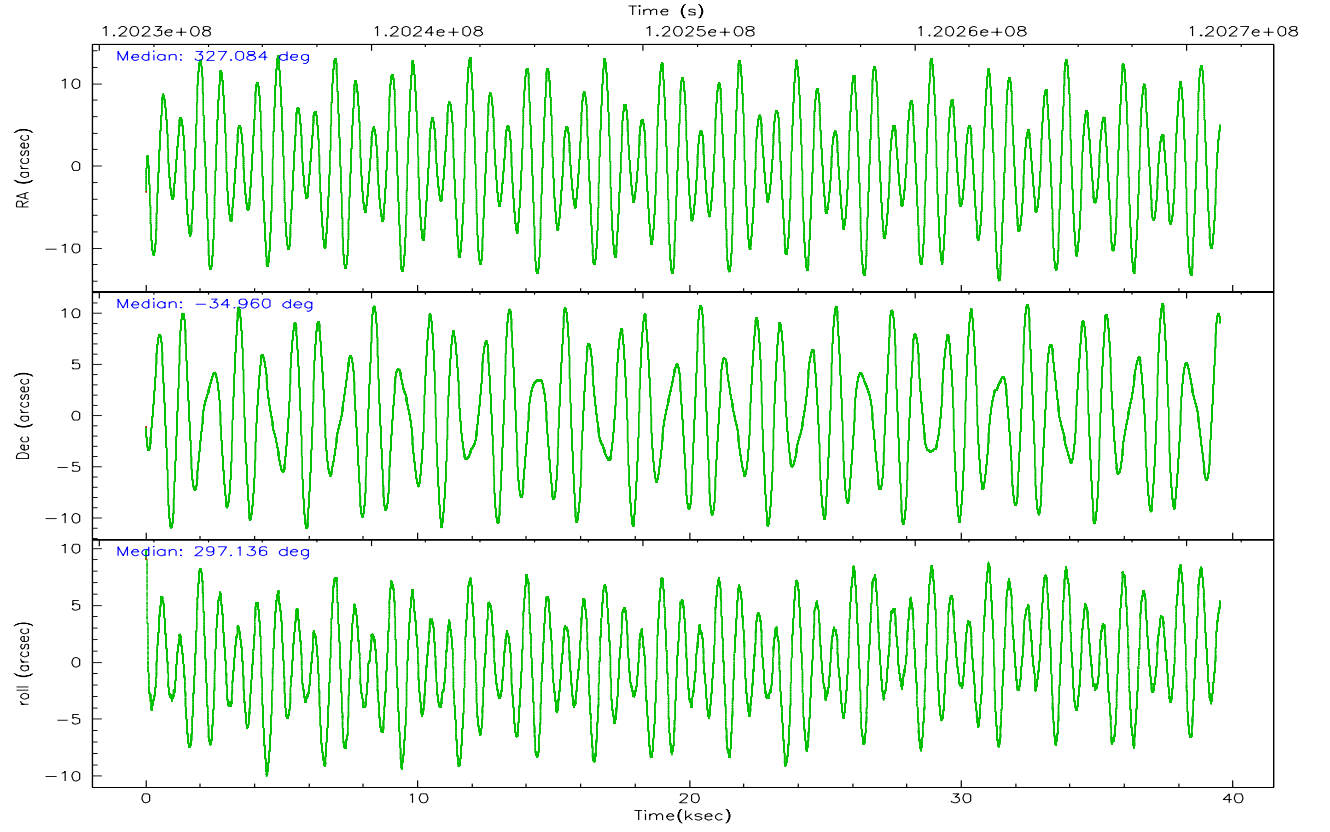
	ccd 2	ccd 3	ccd 5	ccd 6	ccd 7	ccd 8
grade 0 events	9662	8851	35638	9116	10380	21753
	5%	5%	15%	5%	5%	9%
grade 1 events	66	60	344	64	199	153
	0%	0%	0%	0%	0%	0%
grade 2 events	4243	3746	32940	4022	18449	11786
	2%	2%	14%	2%	10%	5%
grade 3 events	2001	2016	5425	2119	8515	8696
	1%	1%	2%	1%	4%	3%
grade 4 events	2212	1971	5141	2092	8292	7776
	1%	1%	2%	1%	4%	3%
grade 5 events	4457	4760	14947	5296	15855	7068
	2%	2%	6%	3%	8%	3%
grade 6 events	3216	3264	45024	3481	40578	14841
	1%	2%	20%	2%	22%	6%
grade 7 events	147643	135489	83532	138491	78279	153600
	85%	84%	37%	84%	43%	68%

2.2 Compared Parameters

Parameter	Planned	Actual	Parameter	Planned	Actual
Instrument	ACIS	ACIS	Obspar format version number	6	6
Detector	ACIS-235678	ACIS-235678	Obspar file type	PREDICTED	ACTUAL
Grating	NONE	NONE	Obspar update status	NONE	UPDATED
Data mode	FAINT	FAINT	Number of optional ACIS chips dropped	0	0
Observation mode	POINTING	POINTING	On-chip summing requested	N	N
Pointing RA	327.055309	327.0834447294906	Subarray requested	1/2	1/2
Pointing Dec	-34.945841	-34.96035972585087	Subarray start row	0	257
Pointing Roll	296.972745	297.1454980181153	Subarray row count	1024	512
SIM focus pos (mm)	-0.684267	-0.6828225247311905	Alternating exposures requested	N	N
SIM defocus (mm)	0	0.001444936568705701	Primary exposure time	0.000000	1.8
SIM translation stage pos (mm)	-190.132523	-190.1400660498719			
SIM translation stage offset (mm)	0	0.00754346686406393			
Observation start time	120231943.184000	120230968.30956			
Observation start date	2001-10-23T13:44:39	2001-10-23T13:29:28			
Observation end time	120271243.184000	120271870.42369			
Observation end date	2001-10-24T00:39:39	2001-10-24T00:51:10			
Read mode	TIMED	TIMED			

2.3 Aspect



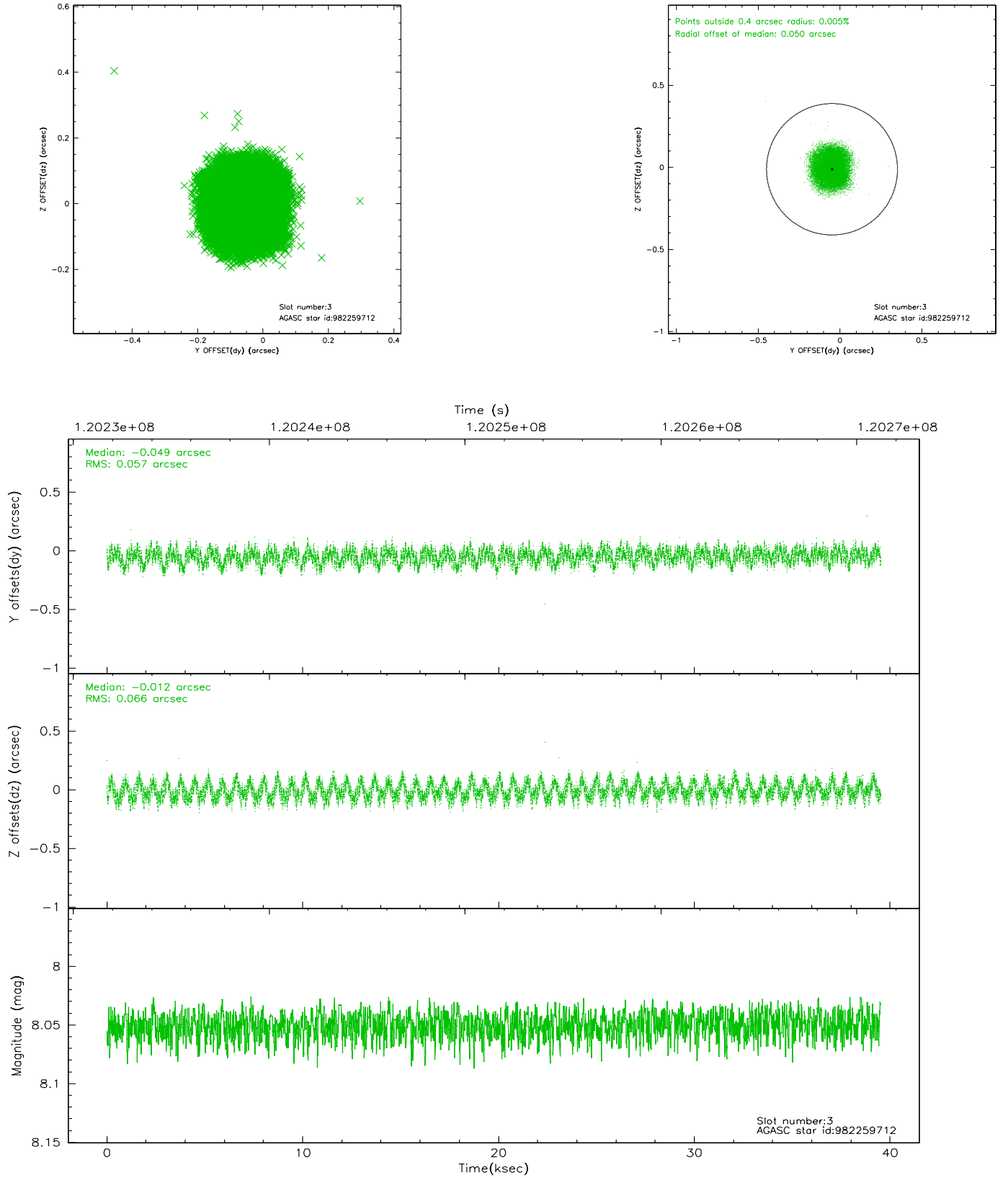


Slot Statistics

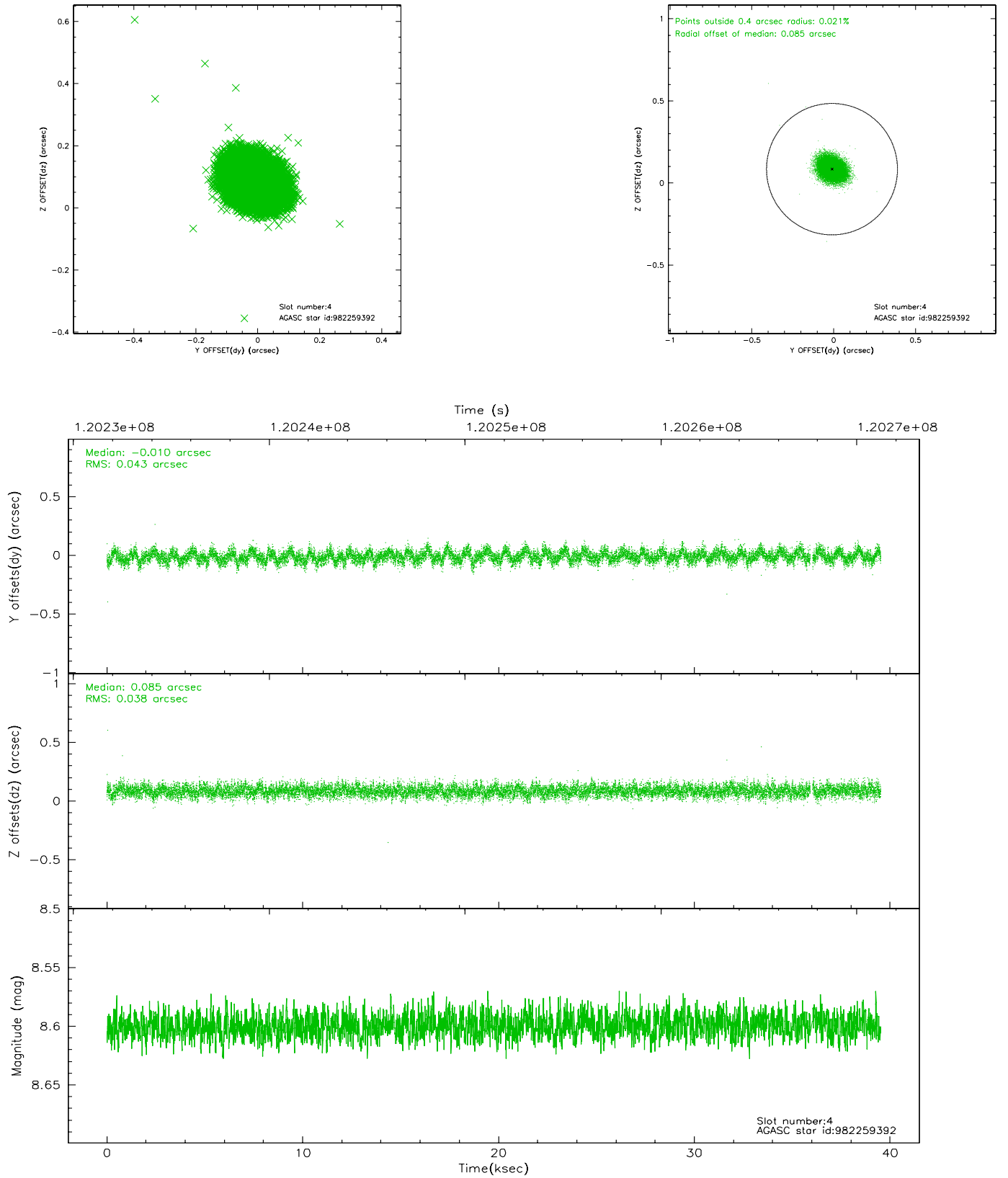
slot	status	id	mag	n_pts	med_dy	med_dz	dr1	dr2	ra	dec	mean_y	mean_z
0	FID	ACIS-S-3	7.36	9642	-0.088	-0.057	0.011	0.020	0.000000	0.000000	57.54	-1857.04
1	FID	ACIS-S-4	7.20	9641	-0.040	0.073	0.019	0.027	0.000000	0.000000	2157.76	180.58
2	FID	ACIS-S-5	7.24	9642	0.099	-0.006	0.011	0.018	0.000000	0.000000	-1808.28	174.24
3	GUIDE	982259712	8.05	19239	-0.049	-0.012	0.097	0.141	327.965600	-35.034104	1510.28	2241.70
4	GUIDE	982259392	8.60	19218	-0.010	0.085	0.061	0.099	327.178282	-35.201108	982.92	-94.44
5	GUIDE	982259848	8.67	19273	0.094	0.062	0.064	0.103	327.319474	-35.485211	2082.38	-190.94
6	GUIDE	982131928	8.86	19270	0.107	-0.213	0.090	0.143	326.702001	-35.707238	1976.25	-2164.82
7	GUIDE	981741024	9.17	19272	-0.141	0.072	0.106	0.178	326.757310	-34.684800	-1236.89	-361.10

2.4 Star Slots

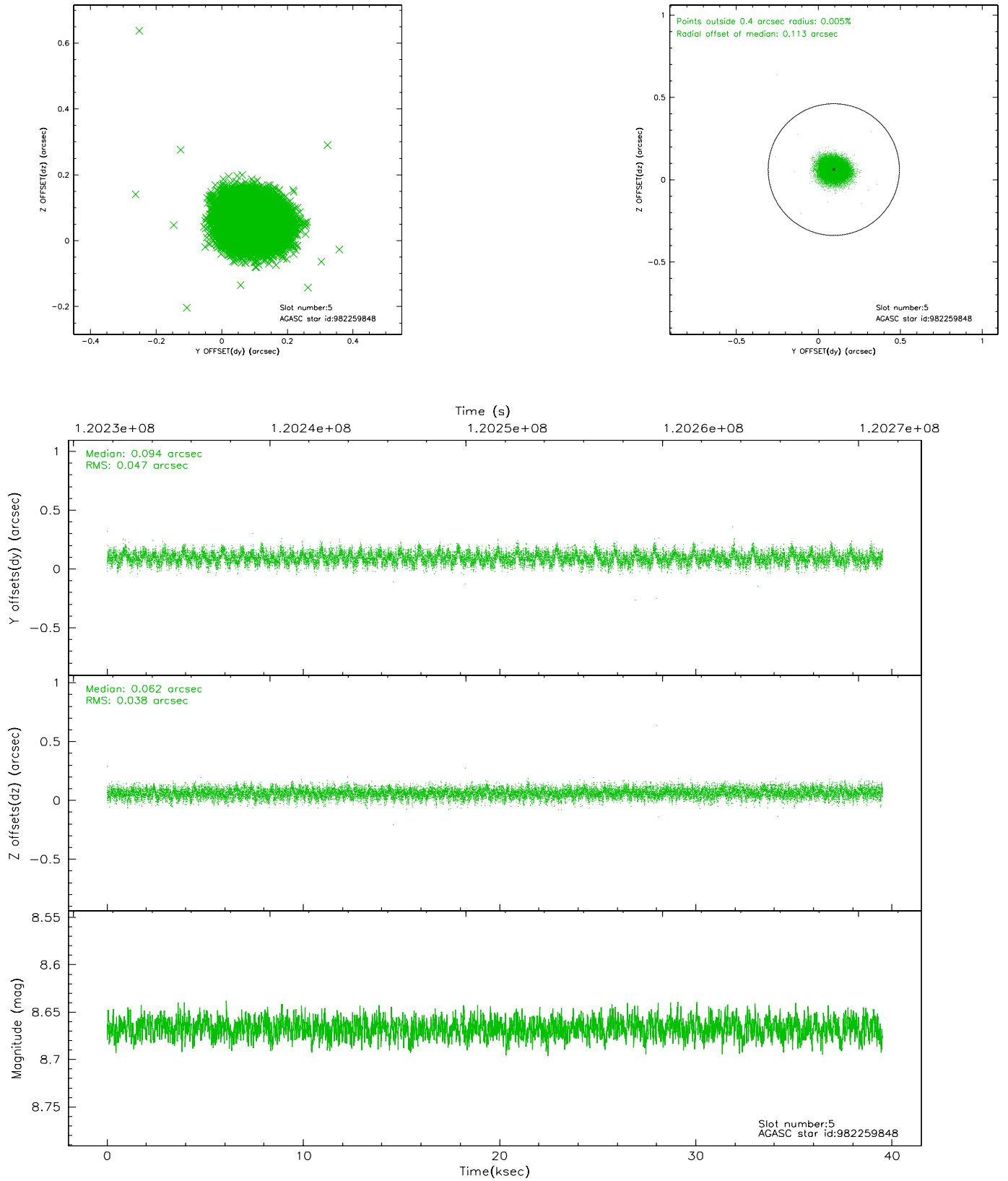
2.4.1 Slot 3



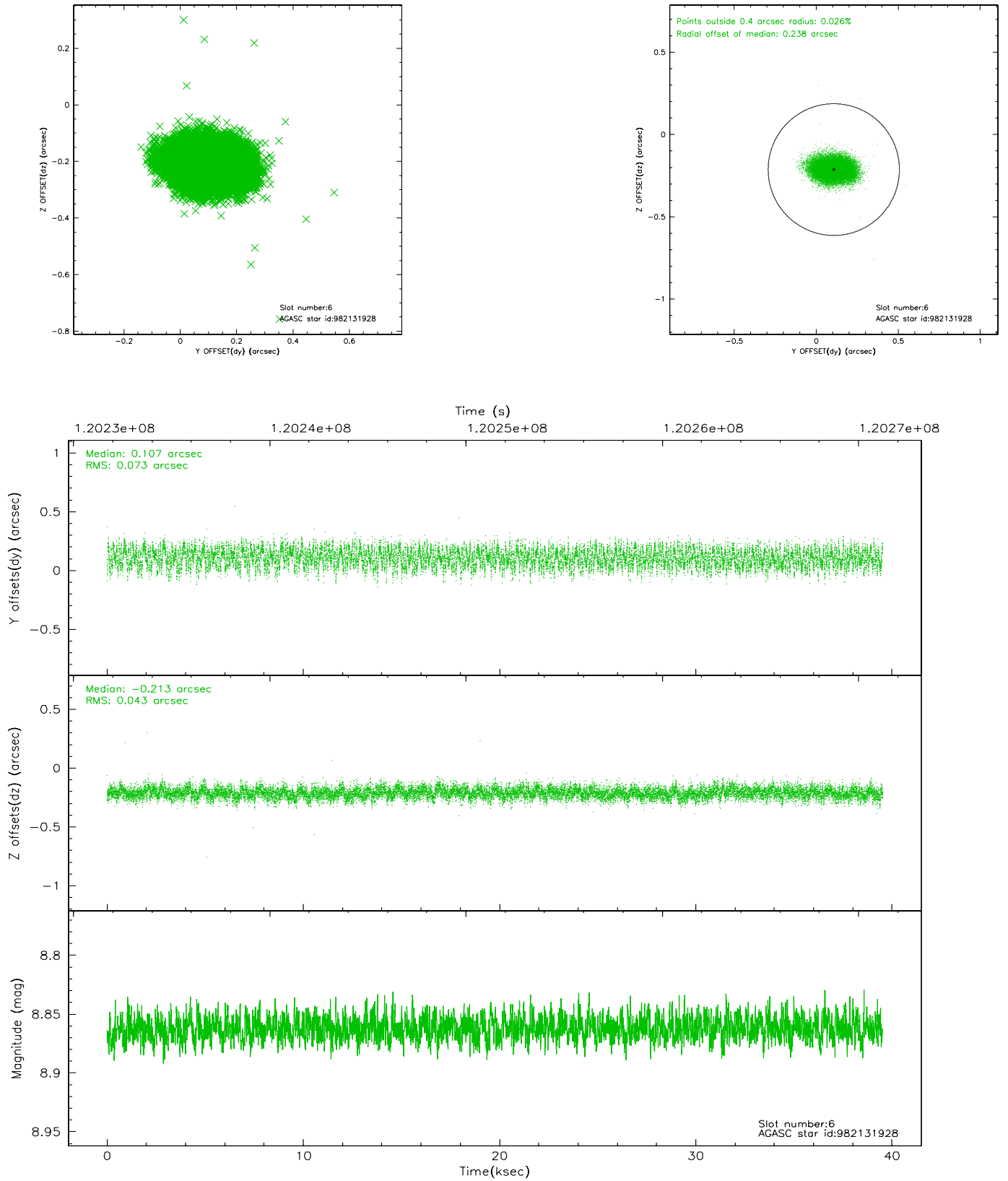
2.4.2 Slot 4



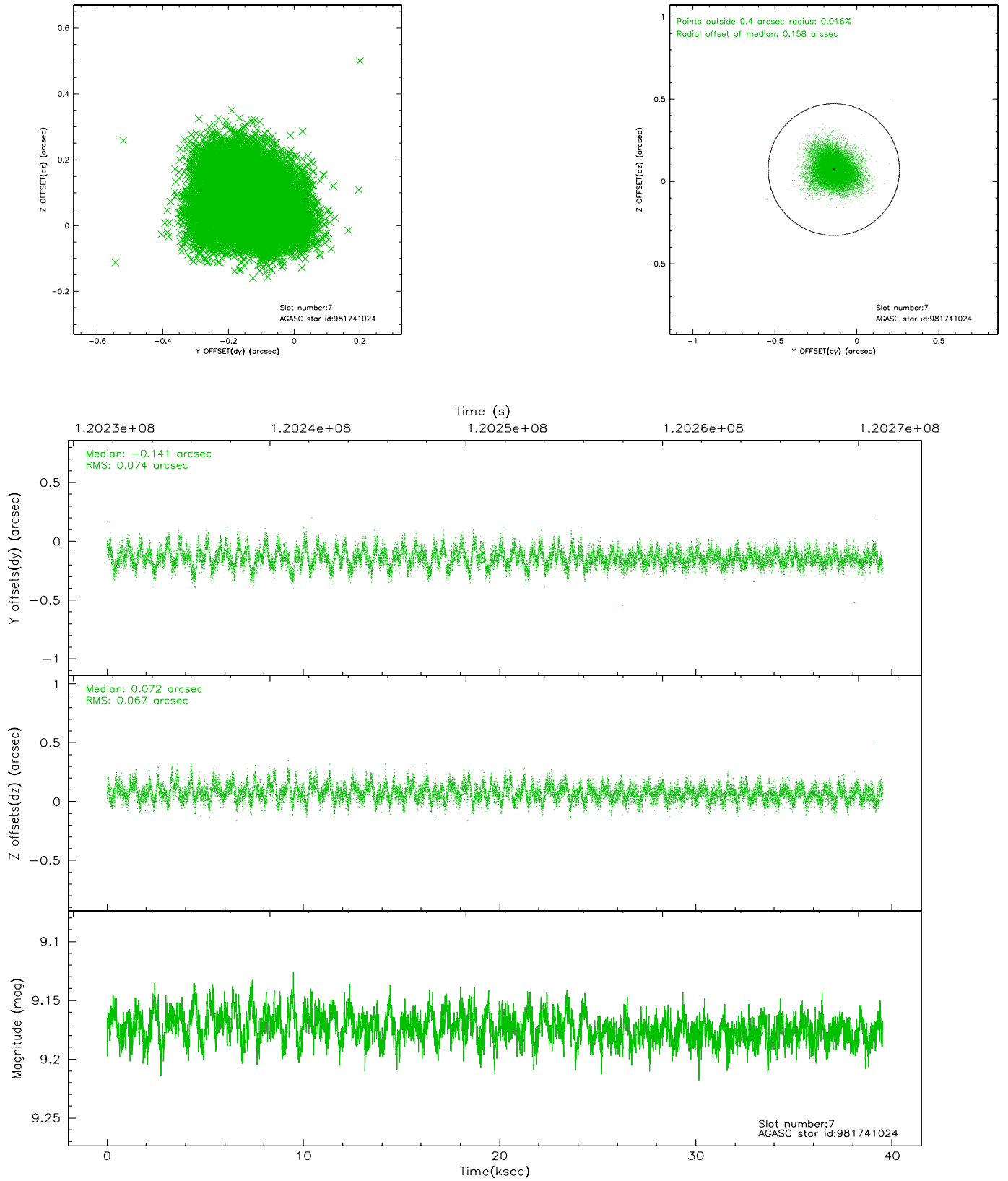
2.4.3 Slot 5



2.4.4 Slot 6

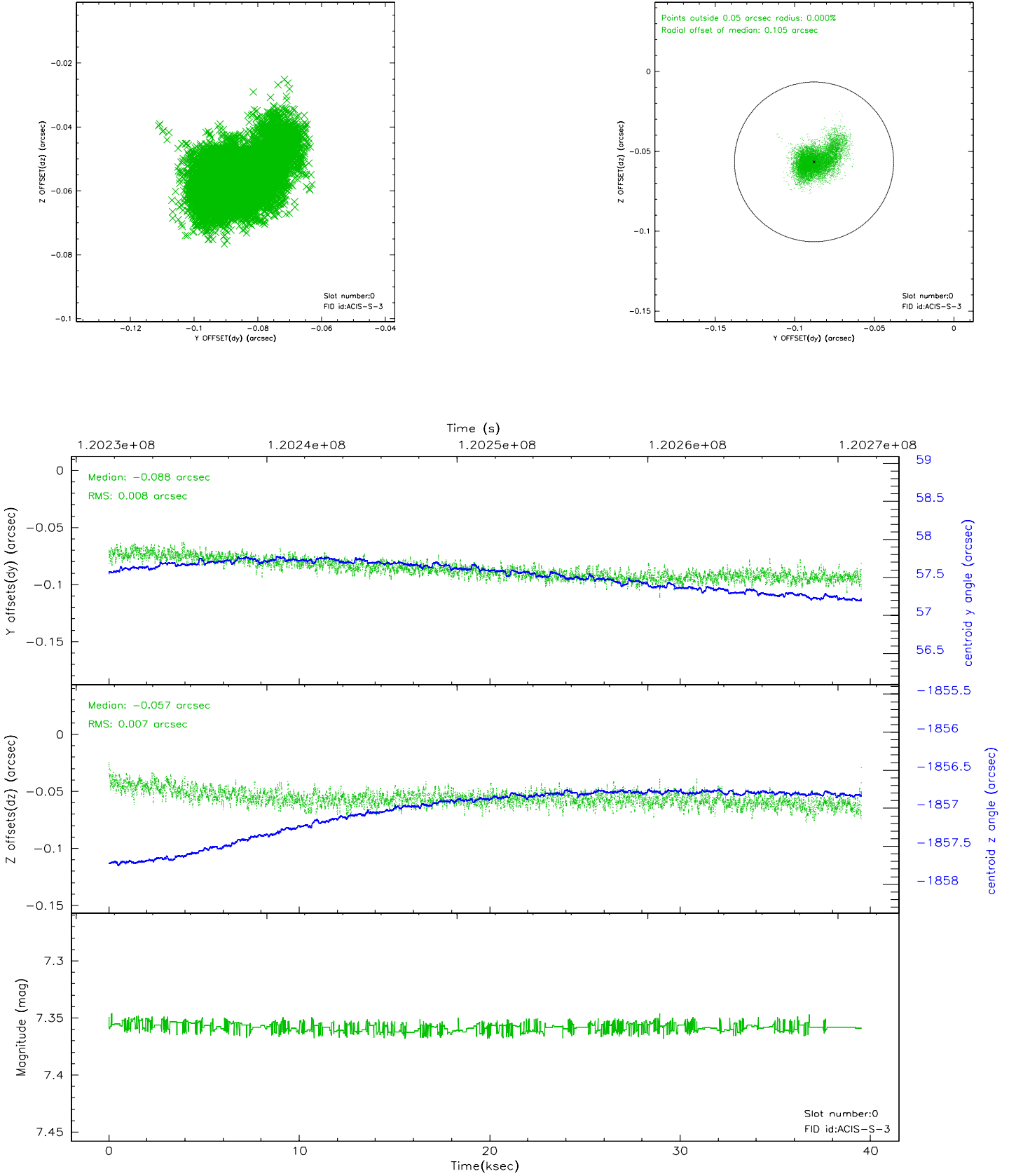


2.4.5 Slot 7

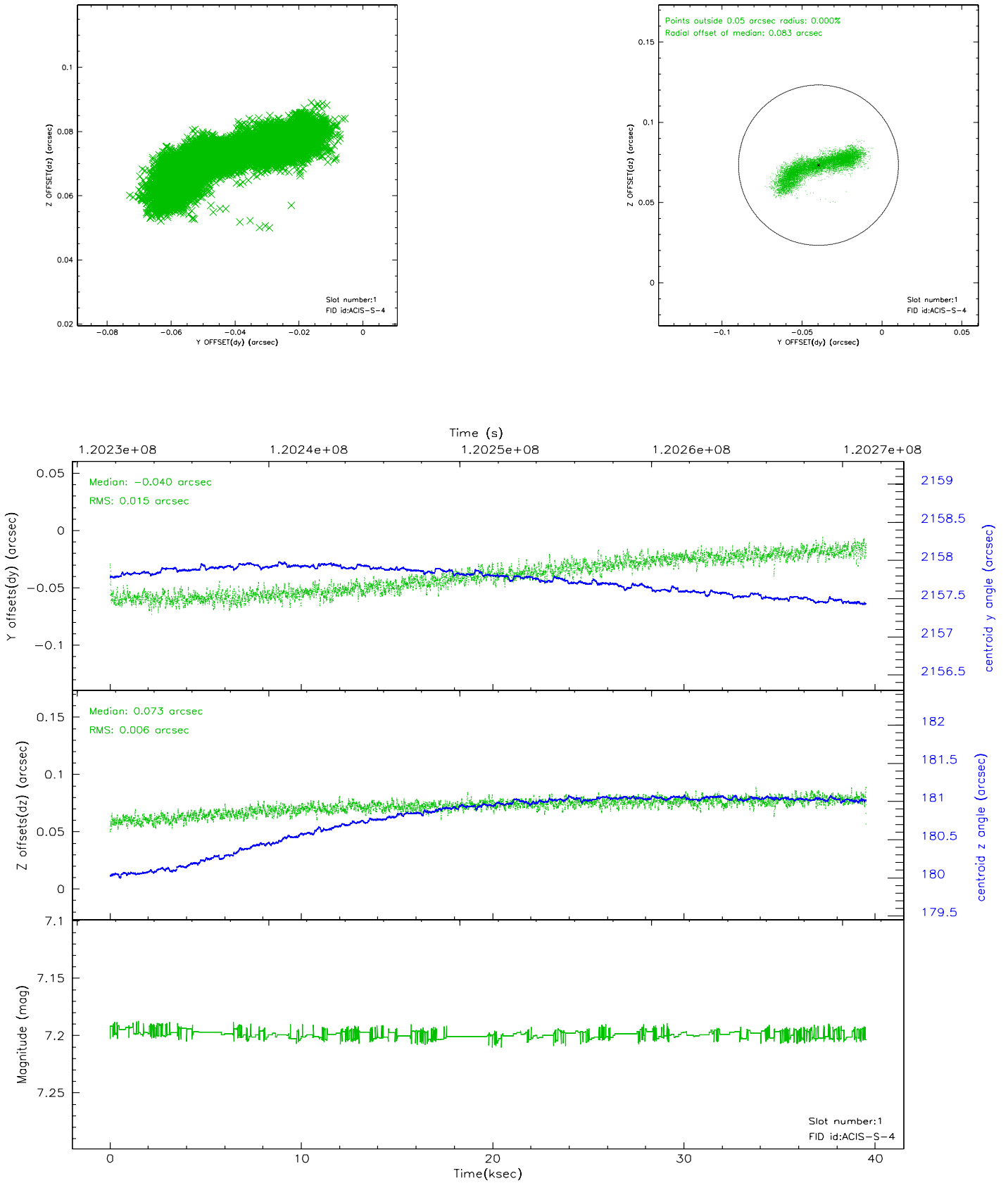


2.5 FID Slots

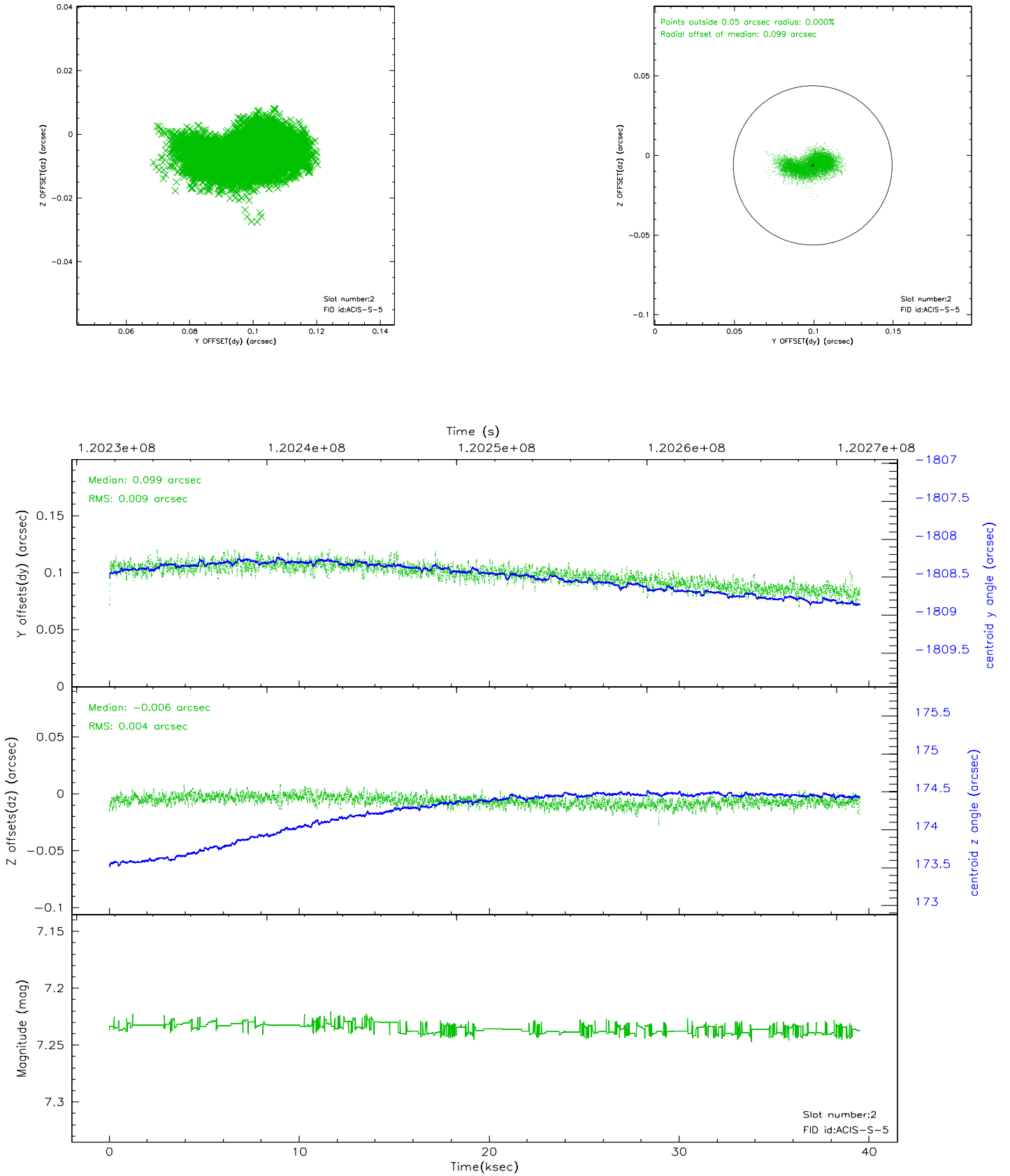
2.5.1 Slot 0



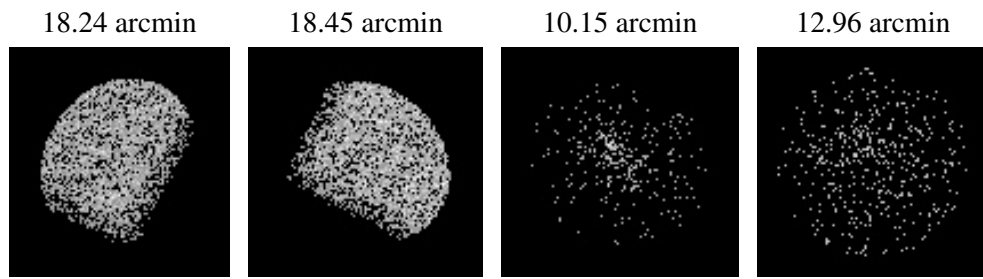
2.5.2 Slot 1



2.5.3 Slot 2



3 Point Sources



A Summary

A.1 Status

V&V Scientist	Jen Lauer
V&V Date (YYYY-MM-DD)	2007.01.11
V&V Edition	1
V&V Disposition and Status	OK
V&V Charge Time	39.522

A.2 Comments