

V&V Reference Report

L2 ASCDS Version : 8.4.5

Observation 1728 - L2 Version 4
Chandra X-Ray Center

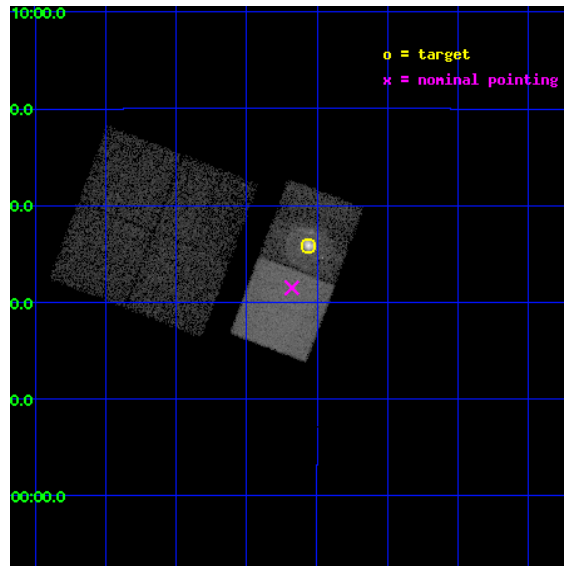
L2 Processing Date : Aug 28 2012

Contents

1	Front	2
2	OBI	3
2.1	OBI	3
2.1.1	Images	3
2.1.2	Bias	3
2.1.3	Parameters	4
2.1.4	Events	4
2.2	Compared Parameters	5
2.3	Aspect	6
2.4	Star Slots	9
2.4.1	Slot 3	9
2.4.2	Slot 4	10
2.4.3	Slot 5	11
2.4.4	Slot 6	12
2.4.5	Slot 7	13
2.5	FID Slots	14
2.5.1	Slot 0	14
2.5.2	Slot 1	15
2.5.3	Slot 2	16
A	Summary	17
A.1	Status	17
A.2	Comments	17

1 Front

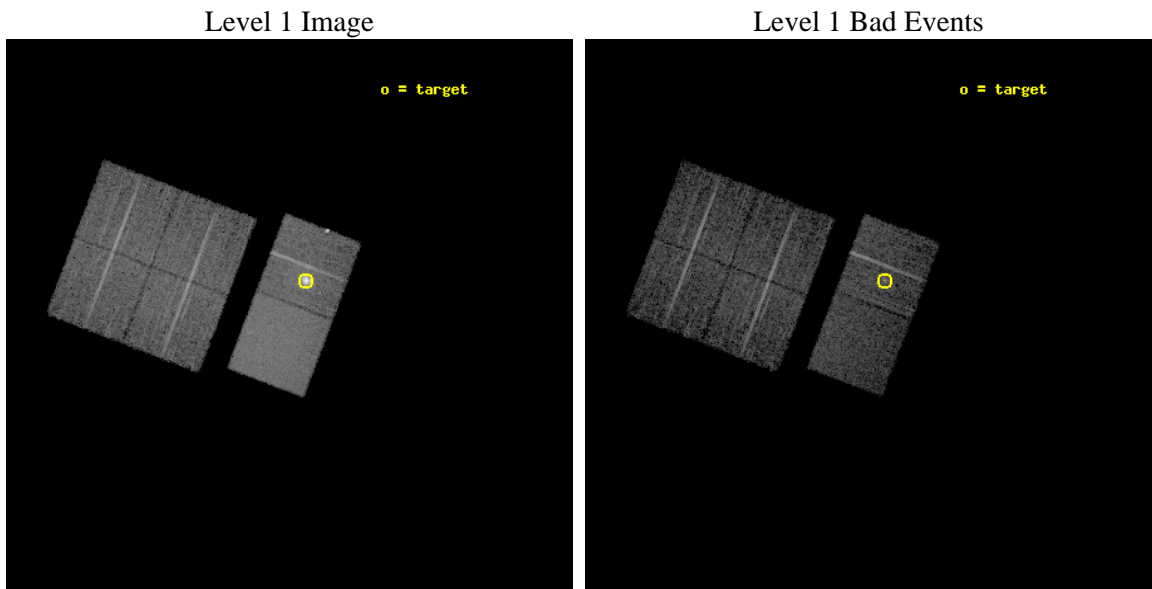
seq_num	590181	Sequence number
obs_id	1728	Observation id
title	HRC RESPONSE TO CONTINUUM SOURCE.	Proposal title
observer	Dr. CXC Calibration	Principal investigator
object	G21.5-0.9 [Chip S2, T=120, Offsets=5,0,0]	Source name
dtcycle	0	
cycle	P	events from which exps? Prim/Second/Both
ra_targ	278.389583	Observer's specified target RA [deg]
dec_targ	-10.568528	Observer's specified target Dec [deg]
ra_nom	278.41962077555	Nominal RA [deg]
dec_nom	-10.641858927653	Nominal Dec [deg]
roll_nom	110.83169166766	Nominal Roll [deg]
revision	4	Processing version of data
ontime	7632.000007093	Sum of GTIs [s]
livetime	7535.3590275645	Livetime [s]
ontime0	7632.000007093	Sum of GTIs [s]
ontime1	7632.000007093	Sum of GTIs [s]
ontime2	7632.000007093	Sum of GTIs [s]
ontime3	7632.000007093	Sum of GTIs [s]
ontime6	7632.000007093	Sum of GTIs [s]
ontime7	7632.000007093	Sum of GTIs [s]
l2events	98895	Number of level 2 events



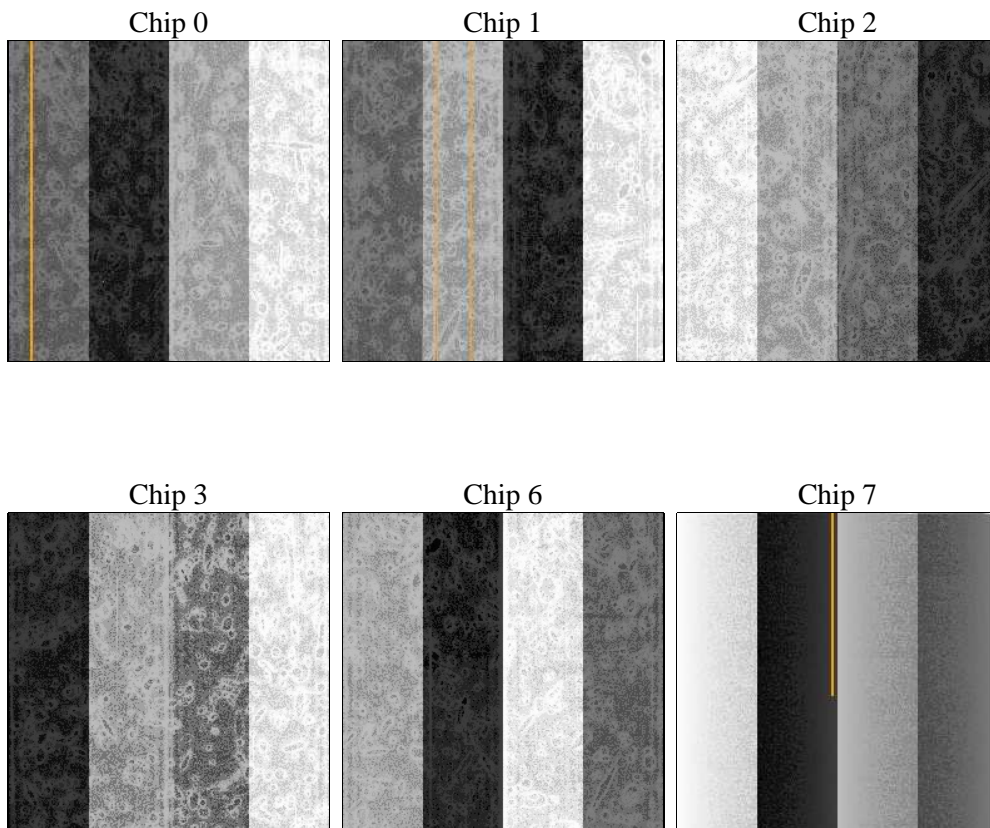
2 OBI

2.1 OBI

2.1.1 Images



2.1.2 Bias



2.1.3 Parameters

obi_num	0	Obi number	sched_exp_time	8000.000000	[s] Scheduled observation exposure time
ascdsver	8.4.5	Processing system revision	ontime	7632.000007093	Sum of GTIs [s]
caldsver	4.5.1.1	 	ontime0	7632.000007093	Sum of GTIs [s]
date	2012-08-28T04:56:38	Date and time of file creation	ontime1	7632.000007093	Sum of GTIs [s]
revision	4	Processing version of data	ontime2	7632.000007093	Sum of GTIs [s]
			ontime3	7632.000007093	Sum of GTIs [s]
			ontime6	7632.000007093	Sum of GTIs [s]
			ontime7	7632.000007093	Sum of GTIs [s]
			l1events	338865	Number of level 1 events

2.1.4 Events

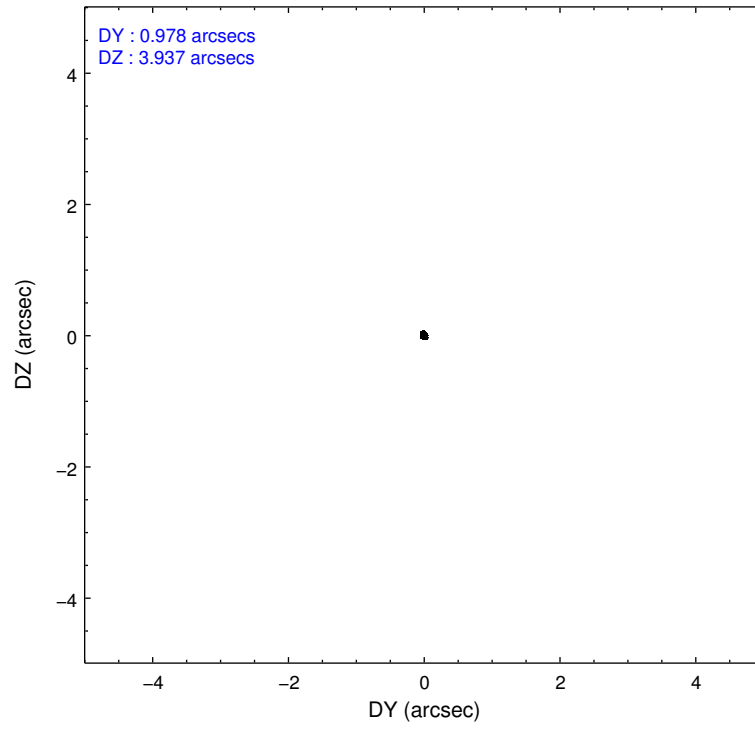
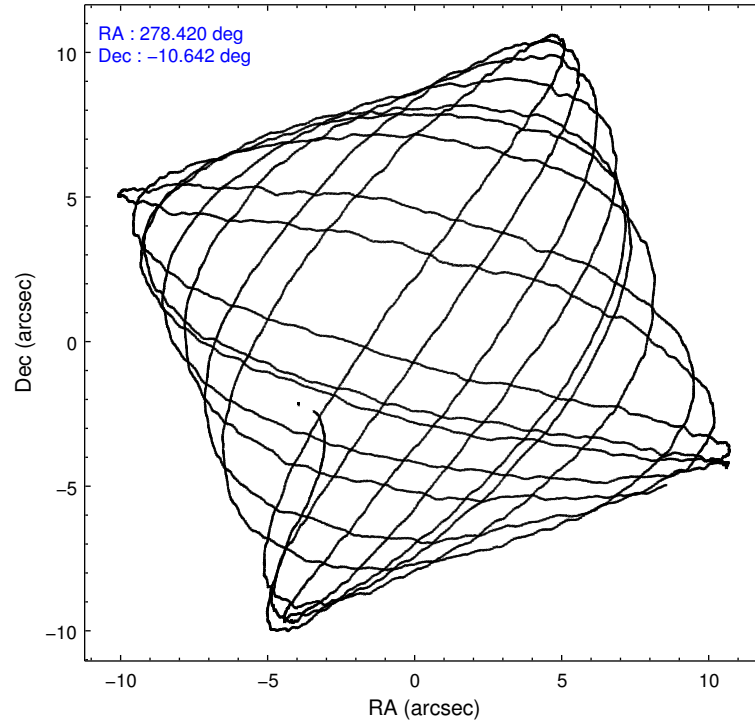
	ccd 0	ccd 1	ccd 2	ccd 3	ccd 6	ccd 7		ccd 0	ccd 1	ccd 2	ccd 3	ccd 6	ccd 7
level 1 events	47323	43923	46180	48343	76755	76341	grade 0 events	3700	3641	3472	3725	24659	4575
rejected events	40111	36703	39532	41335	42050	31892		7%	8%	7%	7%	32%	5%
rejected %	84%	83%	85%	85%	54%	41%	grade 1 events	25	26	19	26	162	54
								0%	0%	0%	0%	0%	0%
							grade 2 events	1450	1370	1341	1348	4575	8099
								3%	3%	2%	2%	5%	10%
							grade 3 events	559	620	485	492	1576	3794
								1%	1%	1%	1%	2%	4%
							grade 4 events	557	564	515	539	1658	3692
								1%	1%	1%	1%	2%	4%
							grade 5 events	1596	1565	1447	1602	1951	5440
								3%	3%	3%	3%	2%	7%
							grade 6 events	952	1029	841	909	2259	24317
								2%	2%	1%	1%	2%	31%
							grade 7 events	38484	35108	38060	39702	39915	26370
								81%	79%	82%	82%	52%	34%

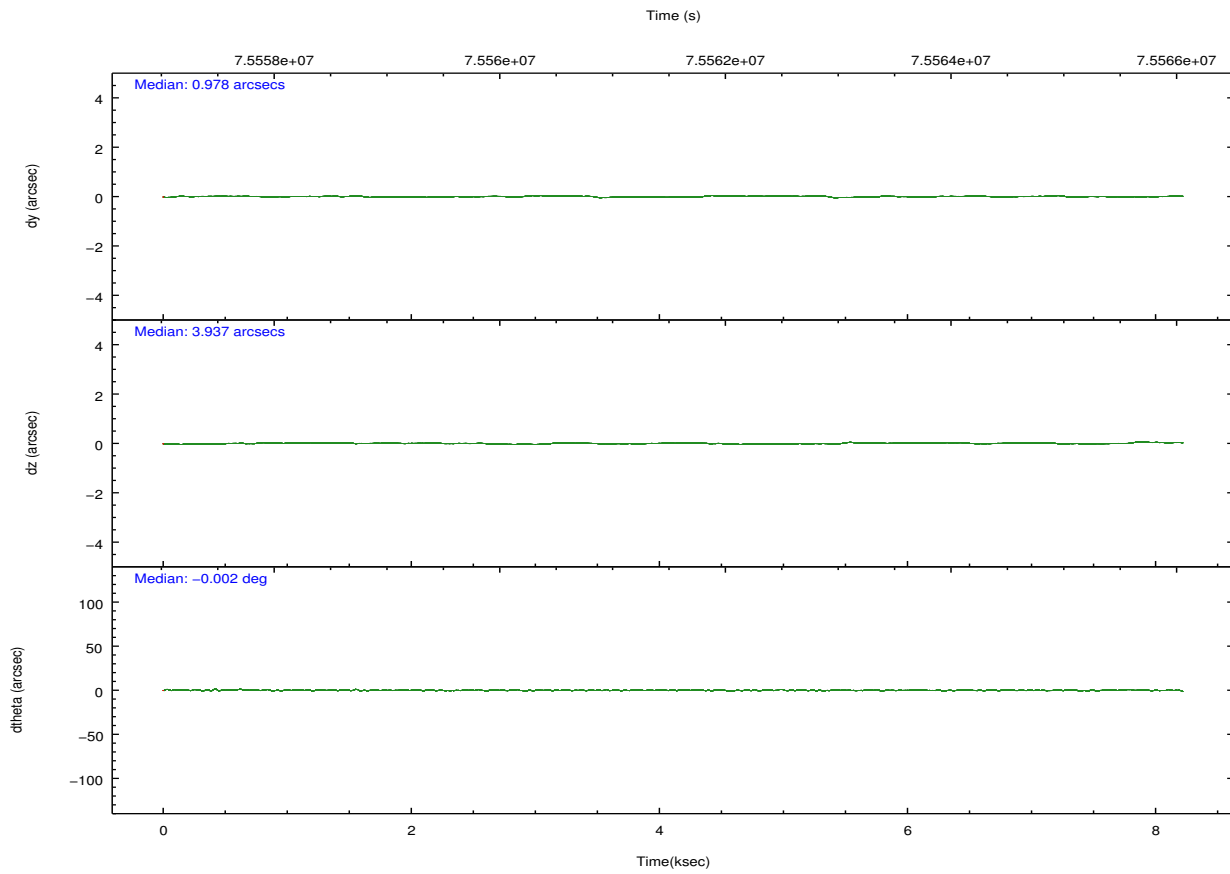
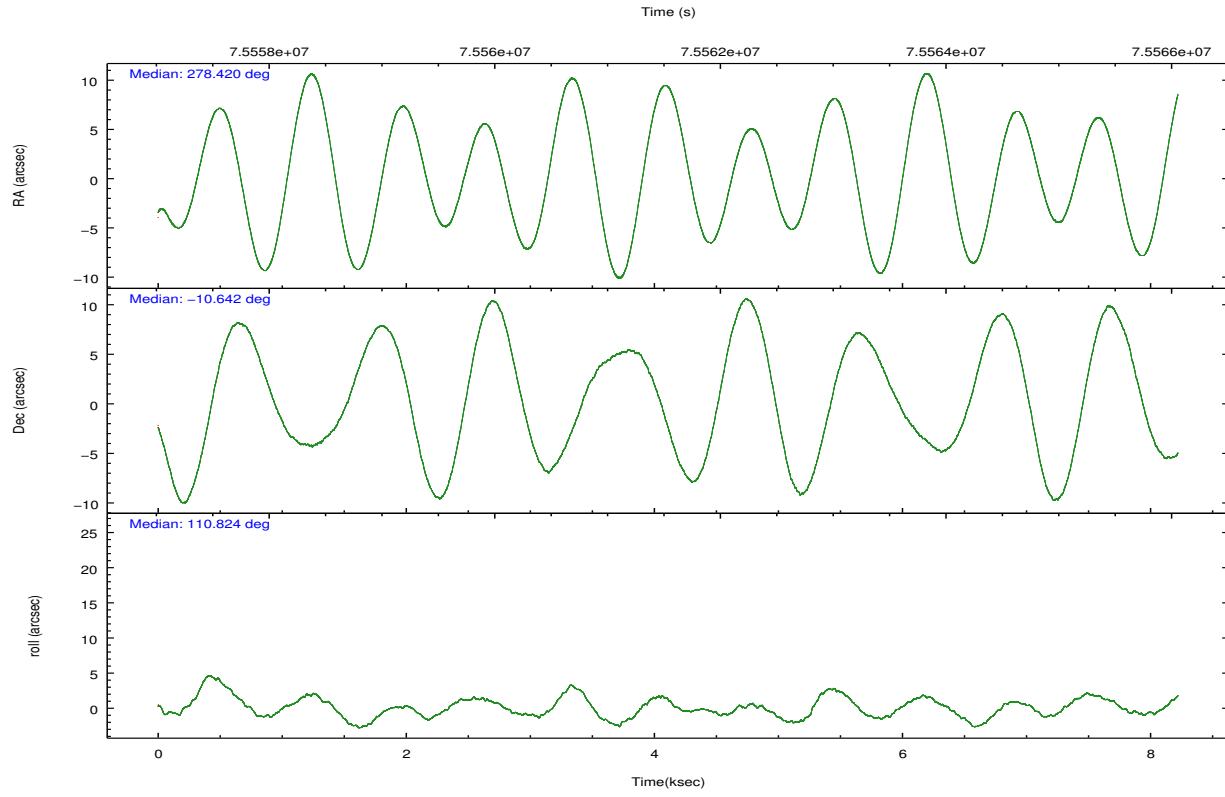
2.2 Compared Parameters

Parameter	Planned	Actual
Instrument	ACIS	ACIS
Detector	ACIS-012367	ACIS-012367
Grating	NONE	NONE
Data mode	FAINT	FAINT
Observation mode	POINTING	POINTING
[deg] Pointing RA	278.441370	278.4196207755501
[deg] Pointing Dec	-10.659048	-10.64185892765252
[deg] Pointing Roll	110.679083	110.831691667662
[mm] SIM focus pos	-0.684267	-0.6828225247311905
[mm] SIM defocus	0	0.001444936568705701
[mm] SIM translation stage pos	-189.459123	-189.4561722878476
[mm] SIM translation stage offset	-0.6734	-0.6763502951602334
[s] Observation start time (MET)	75557645.184000	75557249.23293699
Observation start date	2000-05-24T12:13:01	2000-05-24T12:07:29
[s] Observation end time (MET)	75565645.184000	75565779.28325
Observation end date	2000-05-24T14:26:21	2000-05-24T14:29:39
Read mode	TIMED	TIMED

Parameter	Planned	Actual
Obspar format version number	7	7
Obspar file type	PREDICTED	ACTUAL
Obspar update status	NONE	UPDATED
Number of optional ACIS chips dropped	0	0
On-chip summing requested	N	N
Subarray requested	NONE	NONE
Alternating exposures requested	N	N
[s] Primary exposure time	0.000000	3.2

2.3 Aspect



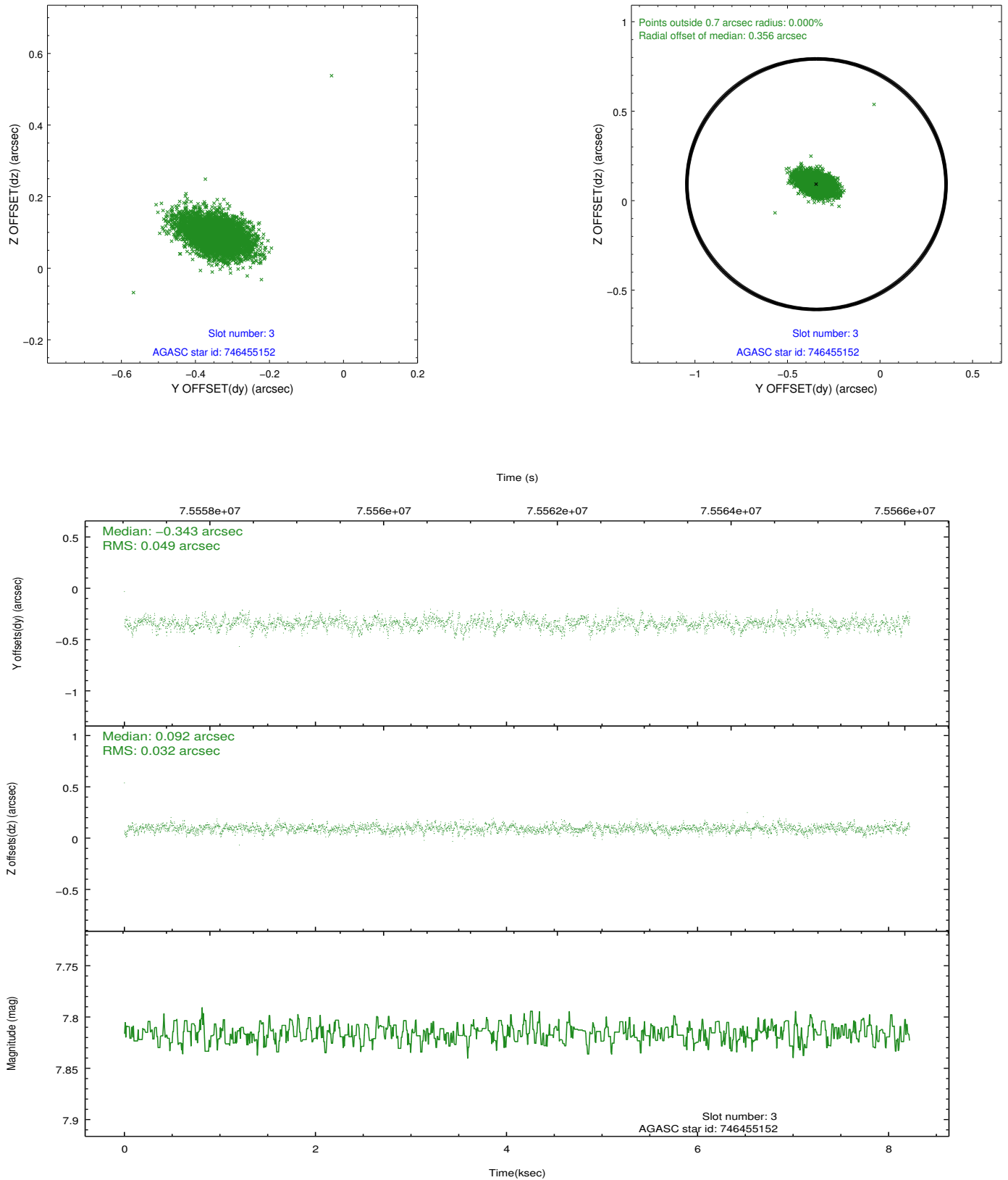


Slot Statistics

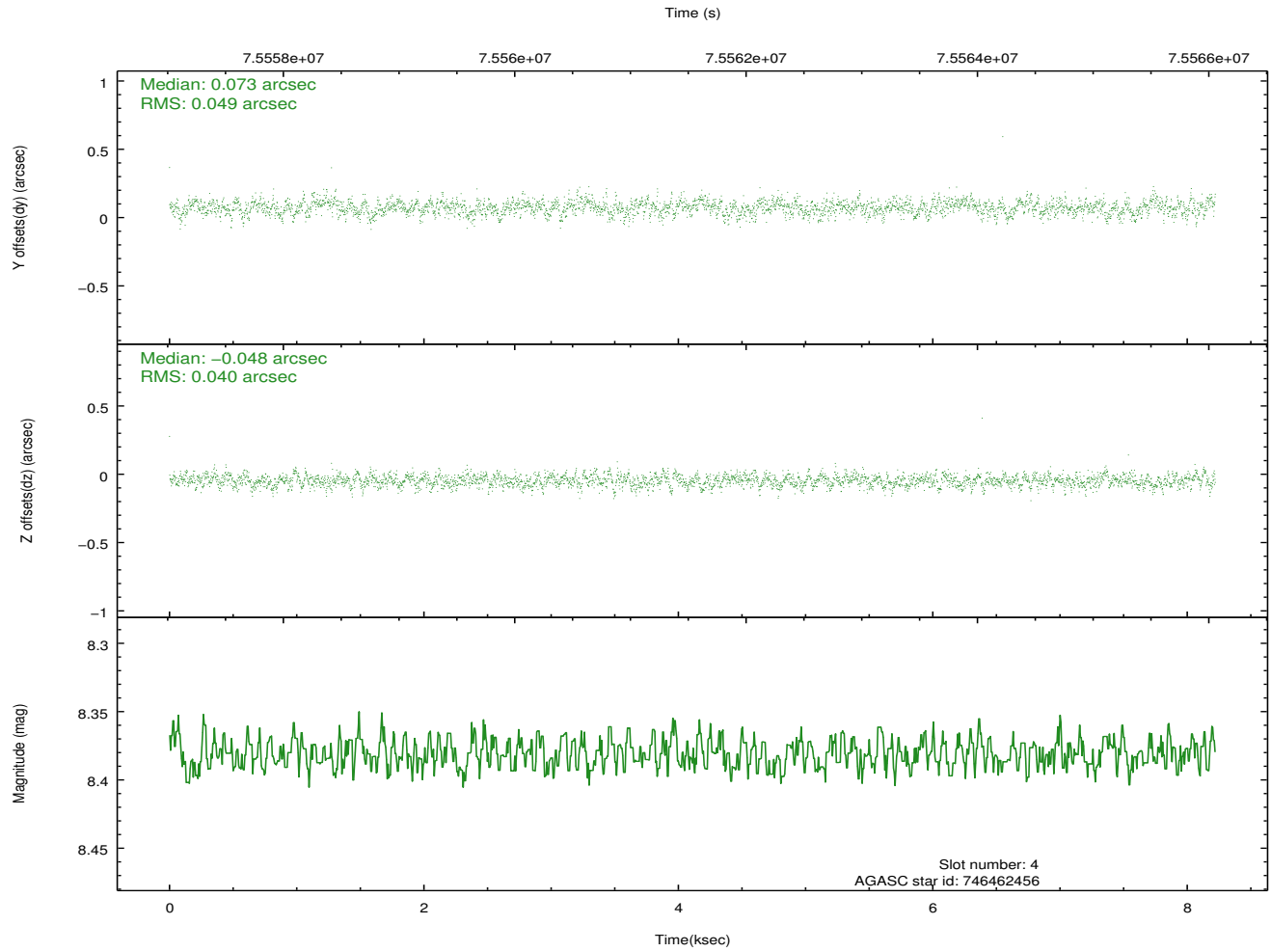
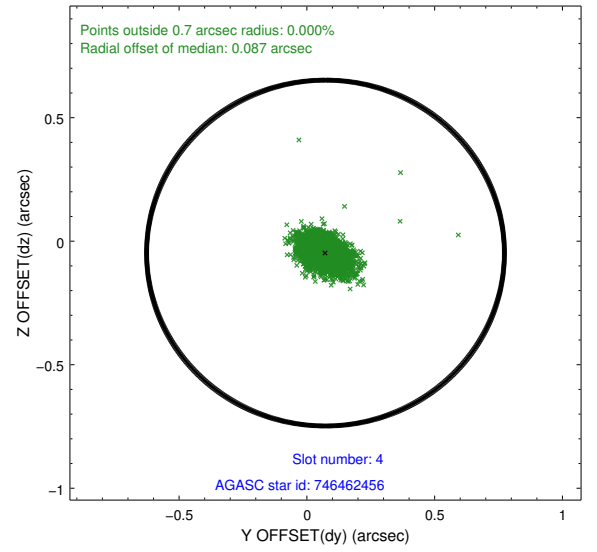
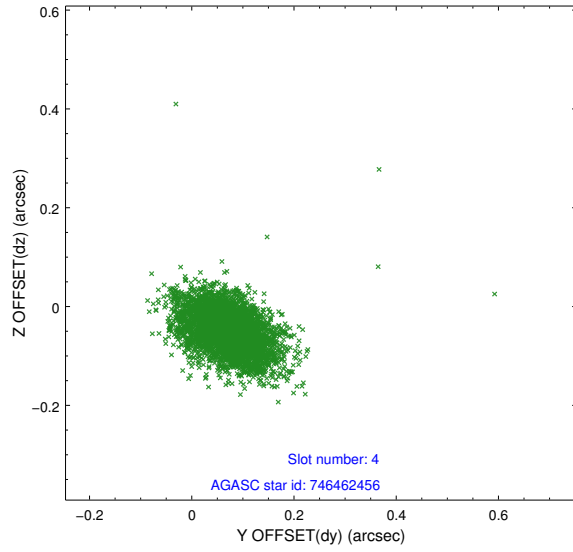
slot	status	id	mag	n_pts	med_dy	med_dz	dr1	dr2	ra	dec	mean_y	mean_z
0	FID	ACIS-S-2	7.11	2005	-0.024	-0.023	0.007	0.011	0.000000	0.000000	-753.59	-1739.11
1	FID	ACIS-S-4	7.21	2006	0.012	0.018	0.006	0.010	0.000000	0.000000	2159.47	168.63
2	FID	ACIS-S-5	7.24	2006	-0.019	0.014	0.007	0.011	0.000000	0.000000	-1805.50	163.18
3	GUIDE	746455152	7.82	4011	-0.343	0.092	0.060	0.106	278.447893	-9.976732	2289.49	-889.05
4	GUIDE	746462456	8.38	4011	0.073	-0.048	0.064	0.110	278.652171	-10.530173	170.84	-862.37
5	GUIDE	746462392	8.53	4010	0.077	0.071	0.074	0.118	279.038421	-10.890715	-1527.53	-1680.20
6	GUIDE	746455112	8.93	4011	0.019	0.112	0.083	0.134	278.266531	-10.703234	68.77	634.18
7	GUIDE	746995400	9.52	4010	0.167	-0.227	0.114	0.186	278.078957	-11.289885	-1673.92	1998.68

2.4 Star Slots

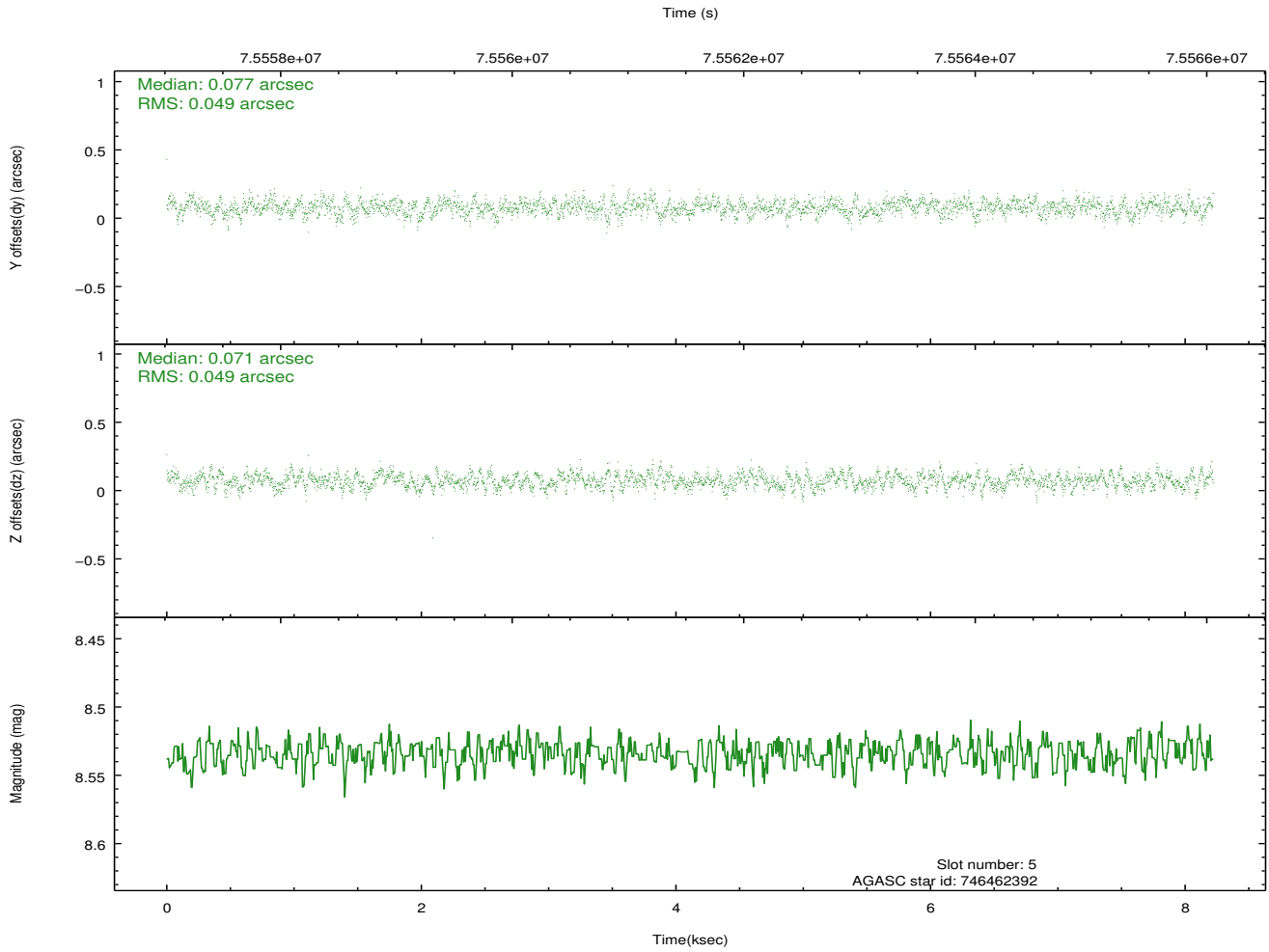
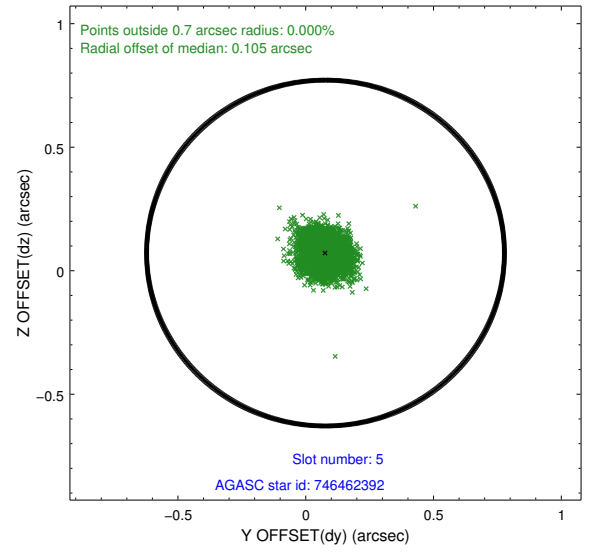
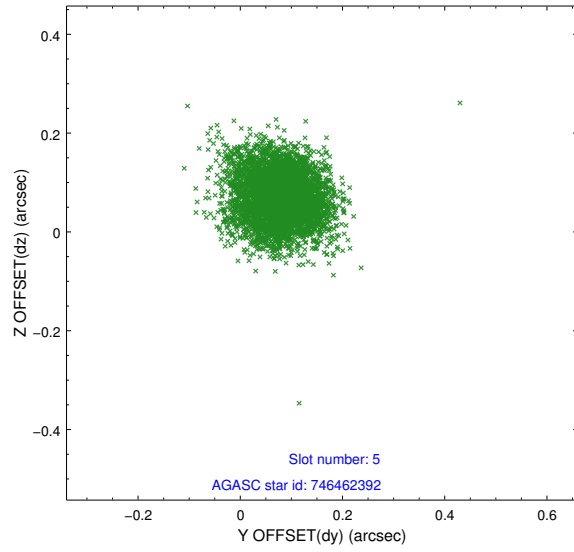
2.4.1 Slot 3



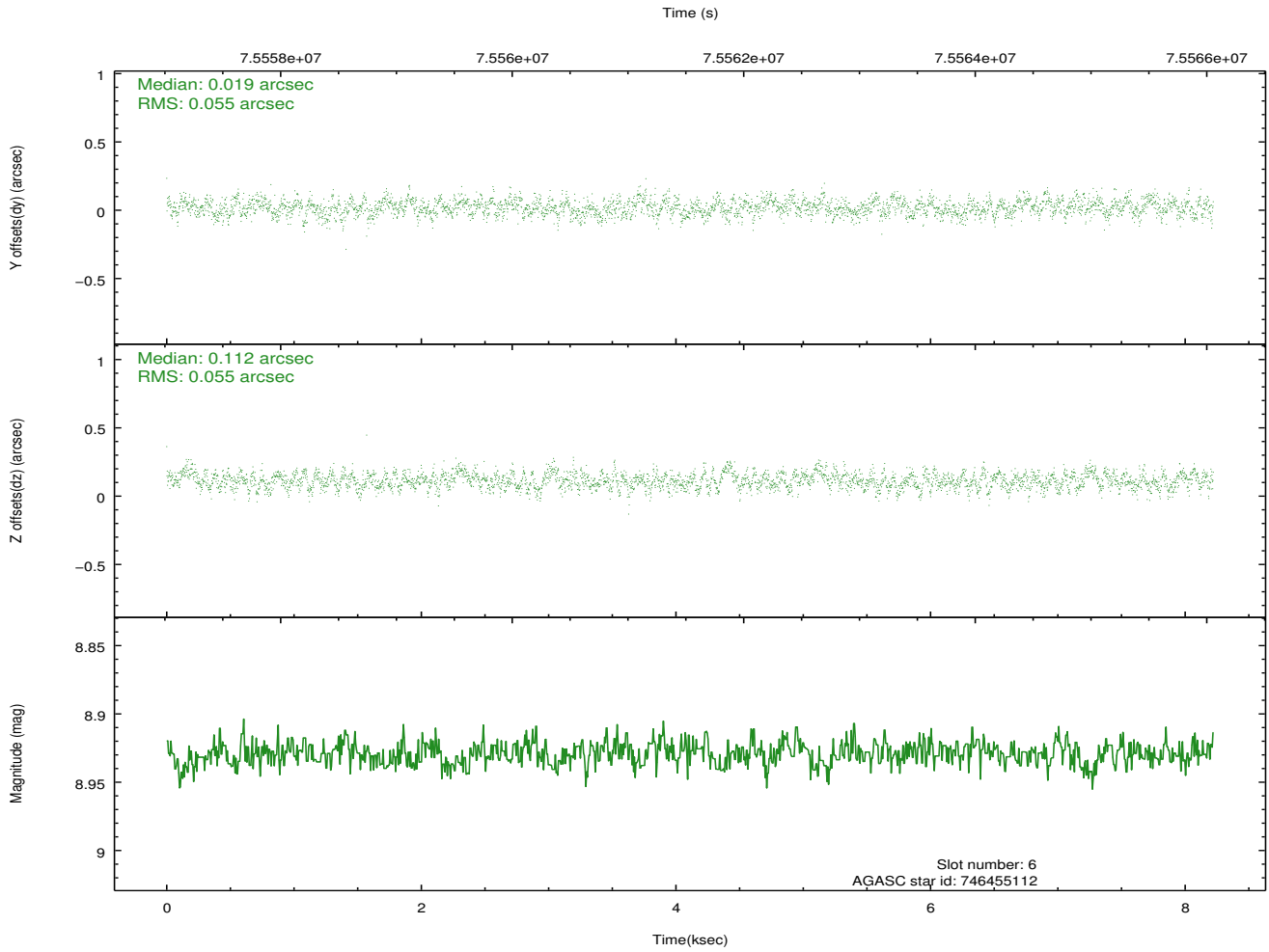
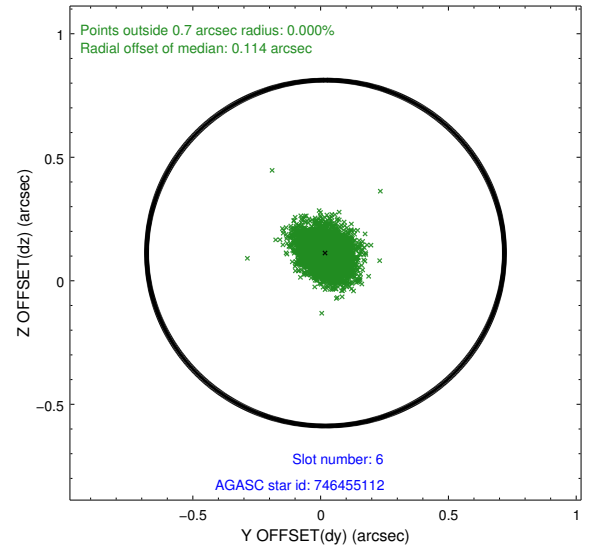
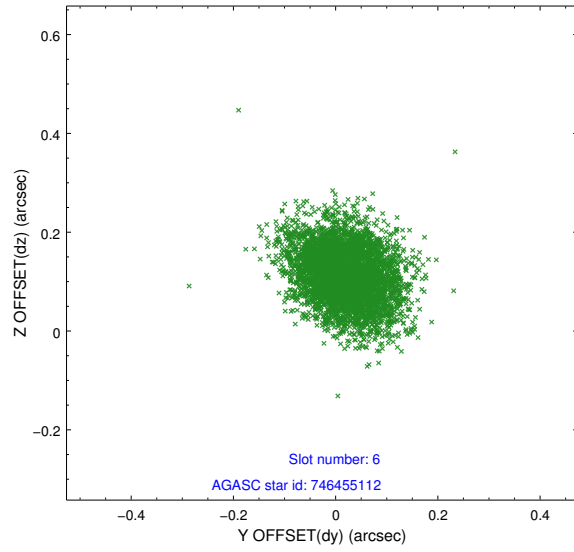
2.4.2 Slot 4



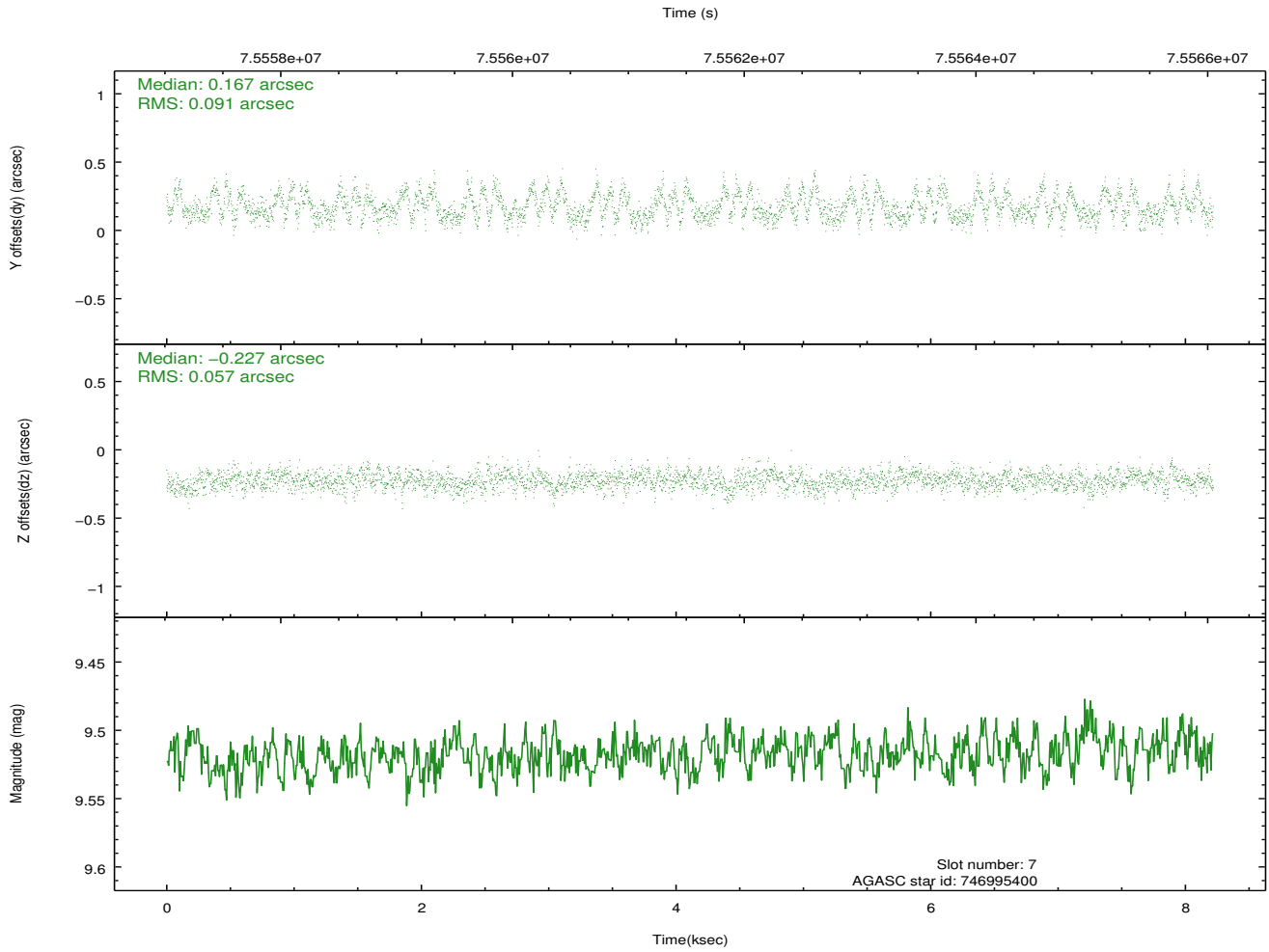
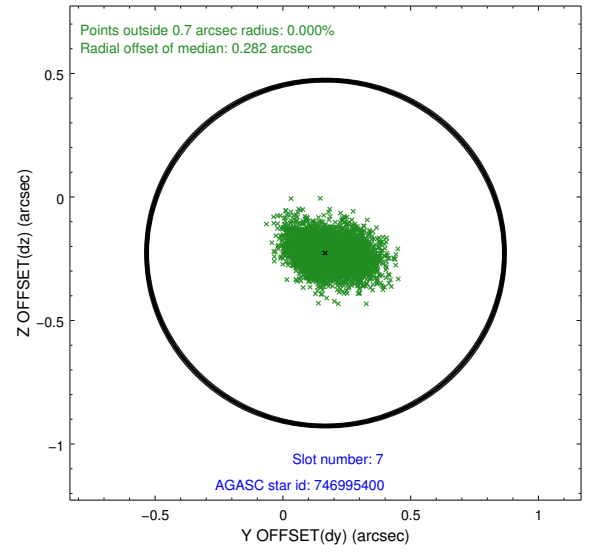
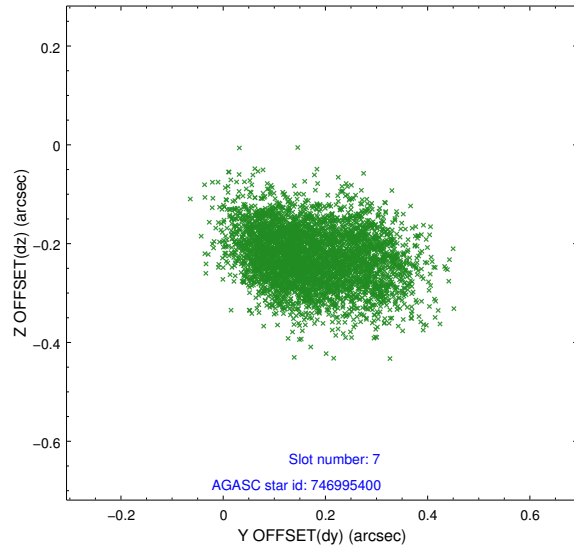
2.4.3 Slot 5



2.4.4 Slot 6

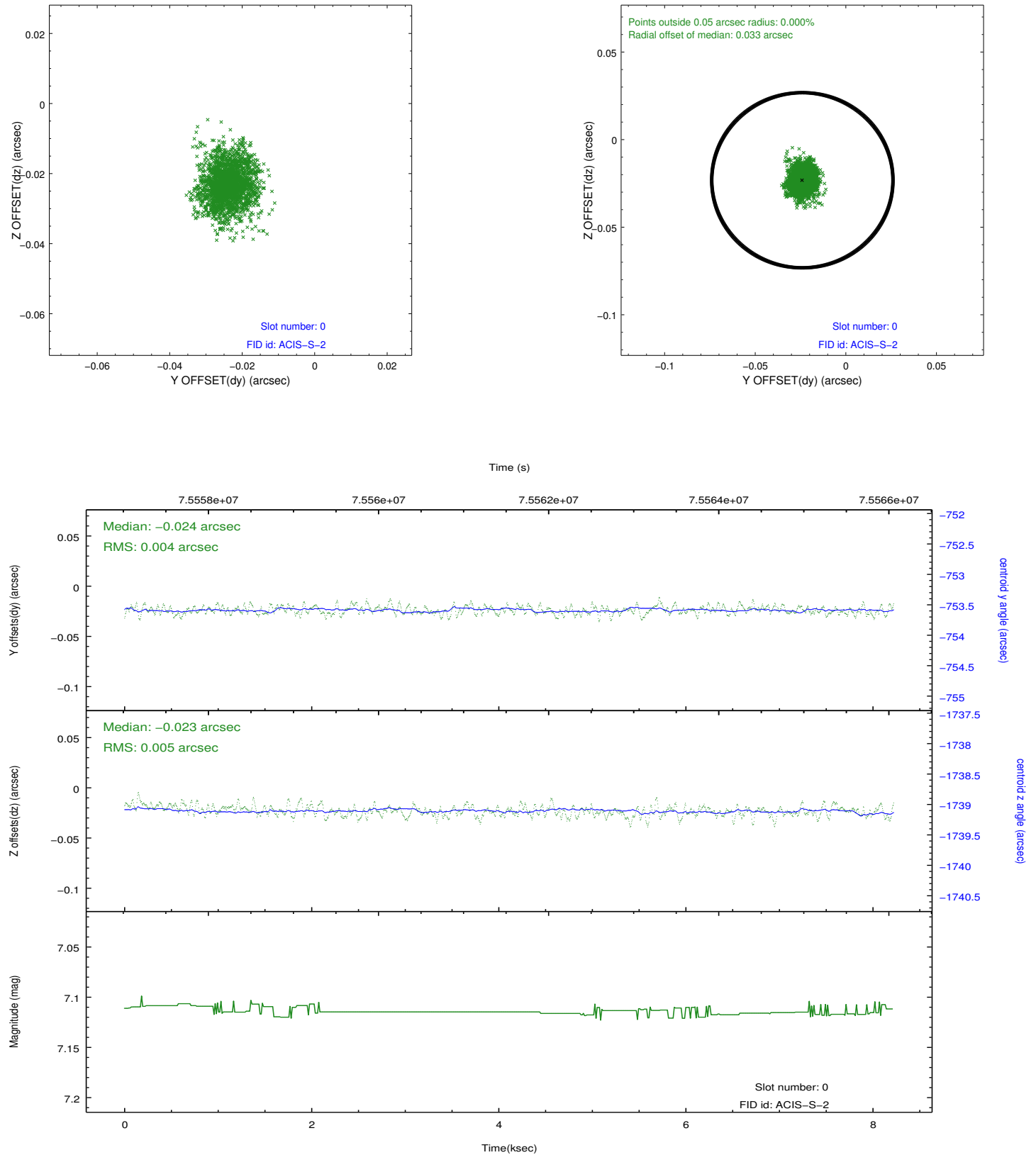


2.4.5 Slot 7

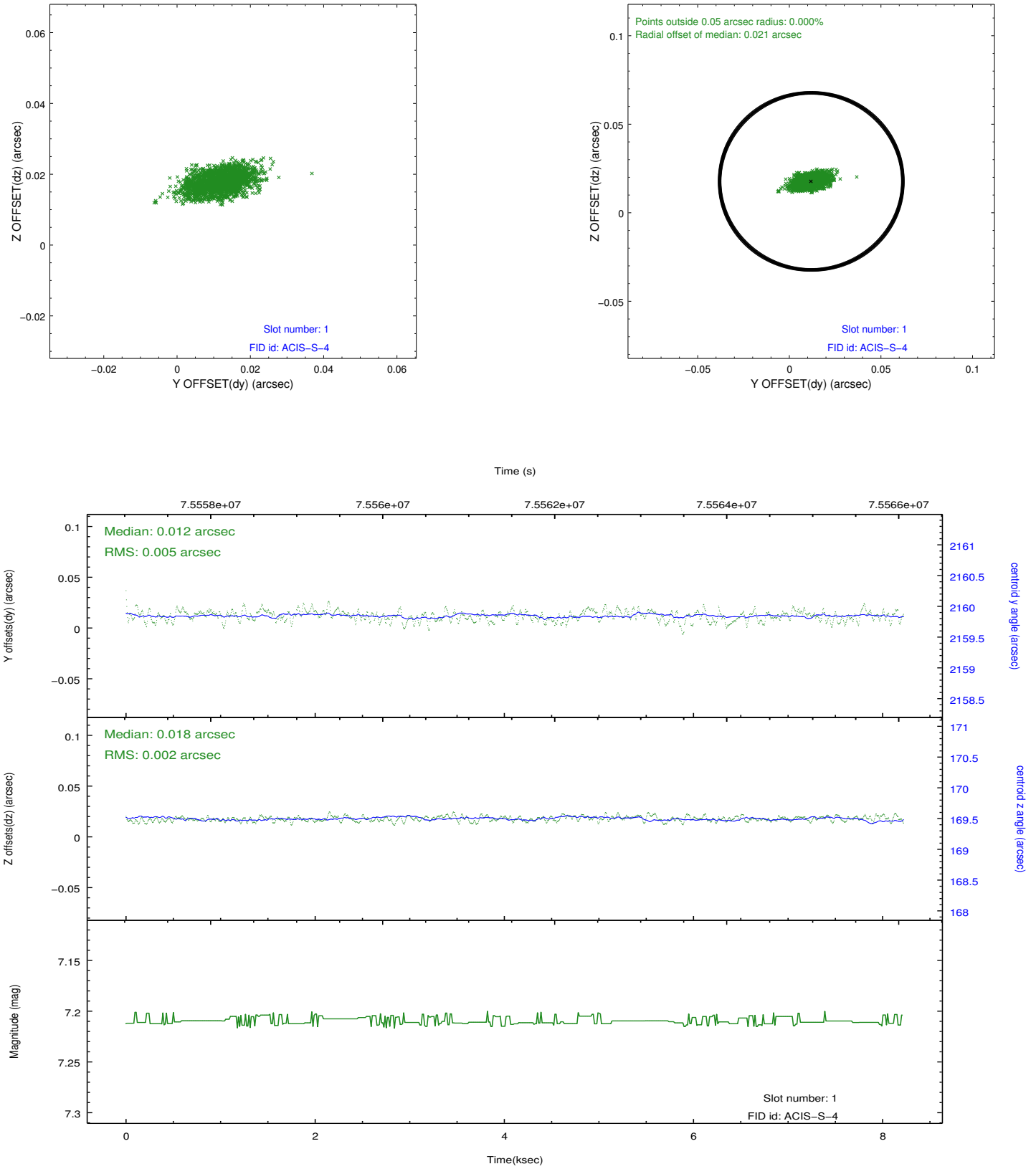


2.5 FID Slots

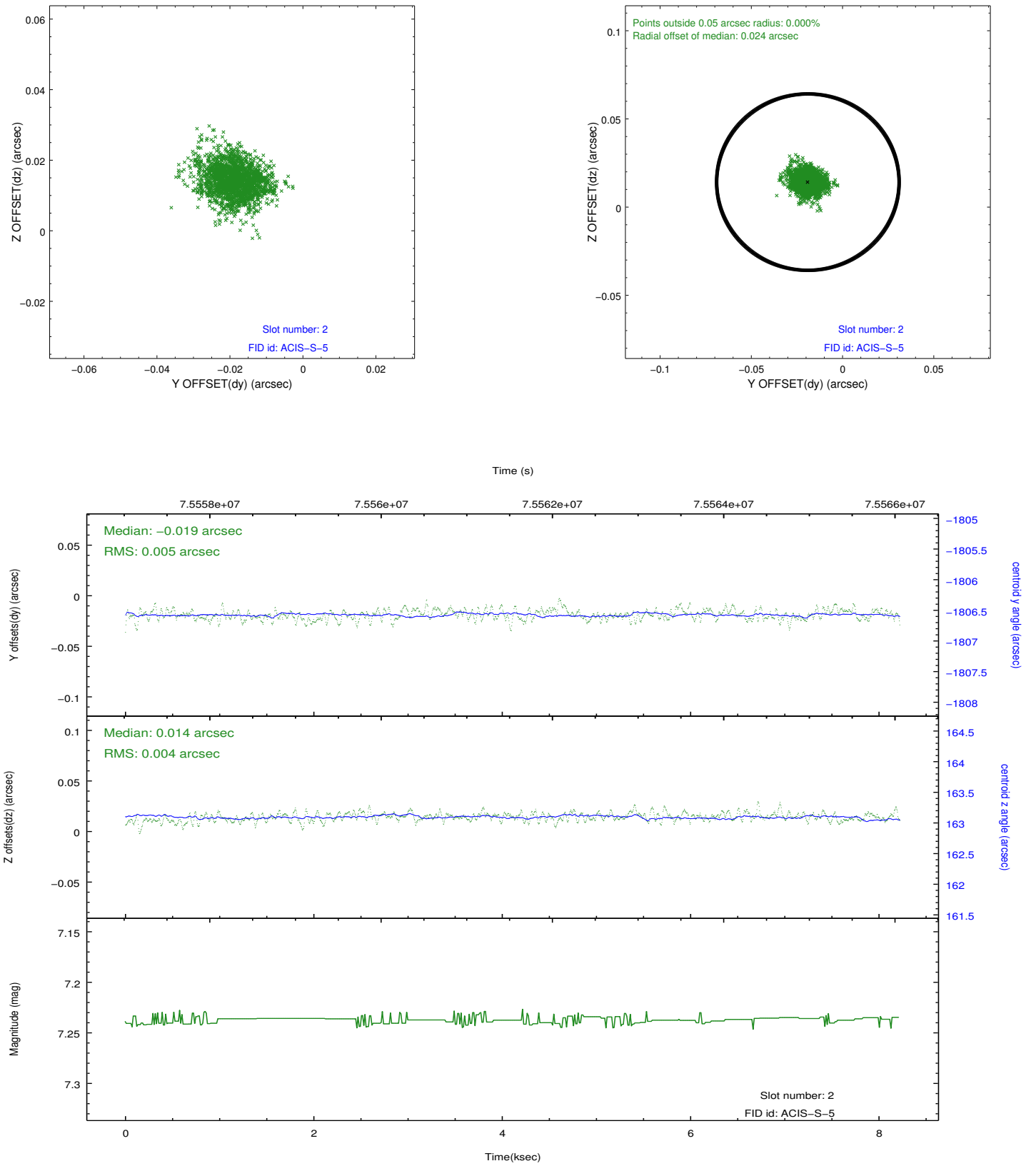
2.5.1 Slot 0



2.5.2 Slot 1



2.5.3 Slot 2



A Summary

A.1 Status

V&V Scientist	Jen Lauer
V&V Date (YYYY-MM-DD)	2012.08.30
V&V Edition	1
V&V Disposition and Status	OK
V&V Charge Time	7.638

A.2 Comments