

V&V Reference Report

L2 ASCDS Version : 10.3

Observation 17078 - L2 Version 1
Chandra X-Ray Center

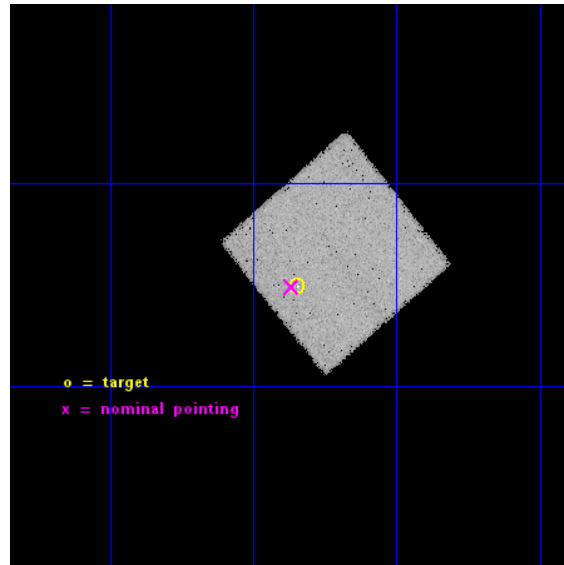
L2 Processing Date : Nov 18 2014

Contents

1	Front	2
2	OBI	3
2.1	OBI	3
2.1.1	Images	3
2.1.2	Bias	3
2.1.3	Parameters	4
2.1.4	Events	4
2.2	Compared Parameters	5
2.3	Aspect	6
2.4	Star Slots	9
2.4.1	Slot 3	9
2.4.2	Slot 4	10
2.4.3	Slot 5	11
2.4.4	Slot 6	12
2.4.5	Slot 7	13
2.5	FID Slots	14
2.5.1	Slot 0	14
2.5.2	Slot 1	15
2.5.3	Slot 2	16
A	Summary	17
A.1	Status	17
A.2	Comments	17

1 Front

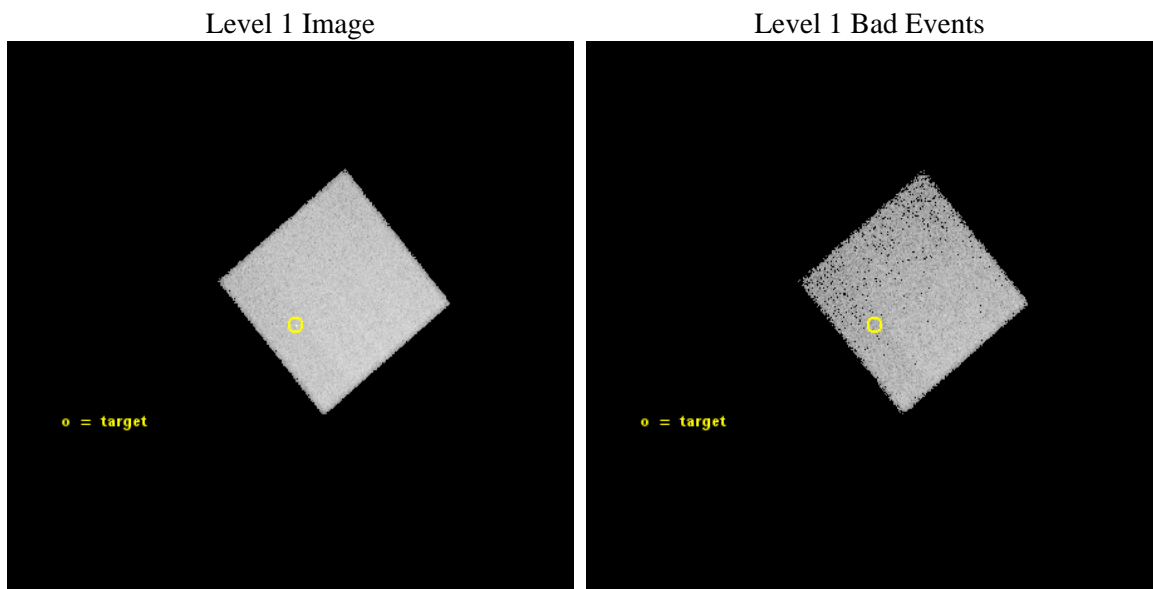
seq_num	703082	Sequence number
obs_id	17078	Observation id
title	The Central Engine of the Most Luminous Quasars	Proposal title
observer	Dr Enrico Piconcelli	Principal investigator
object	SDSS J020950.70-000506.4	Source name
dtcycle	0	
cycle	P	events from which exps? Prim/Second/Both
ra_targ	32.46125	Observer's specified target RA [deg]
dec_targ	-0.085111	Observer's specified target Dec [deg]
ra_nom	32.46668784222	Nominal RA [deg]
dec_nom	-0.085199084483722	Nominal Dec [deg]
roll_nom	320.15664092294	Nominal Roll [deg]
revision	1	Processing version of data
ontime	30091.948094904	Sum of GTIs [s]
livetime	29685.845725381	Livetime [s]
ontime7	30091.948094904	Sum of GTIs [s]
l2events	92436	Number of level 2 events



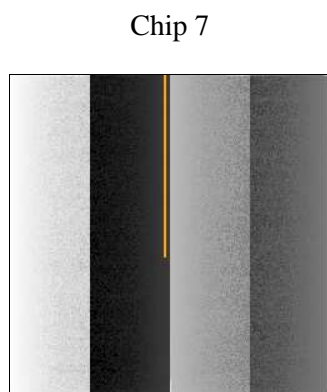
2 OBI

2.1 OBI

2.1.1 Images



2.1.2 Bias



2.1.3 Parameters

obi_num	0	Obi number	sched_exp_time	30000.000000	[s] Scheduled observation exposure time
ascdsver	10.3	Processing system revision	ontime	30091.948094904	Sum of GTIs [s]
caldsver	4.6.4	 	ontime7	30091.948094904	Sum of GTIs [s]
date	2014-11-19T00:20:45	Date and time of file creation	l1events	216365	Number of level 1 events
revision	1	Processing version of data			

2.1.4 Events

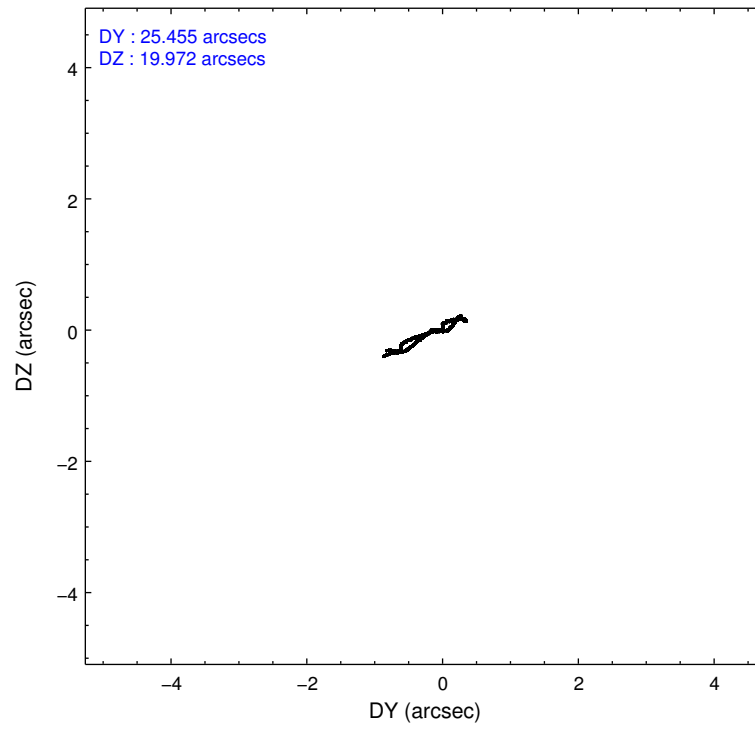
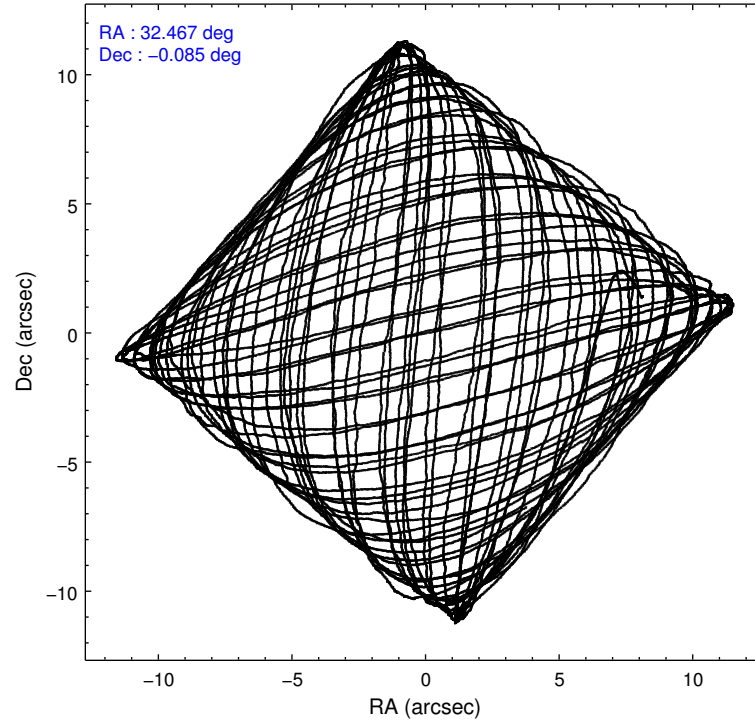
	ccd 7
level 1 events	216365
rejected events	121536
rejected %	56%

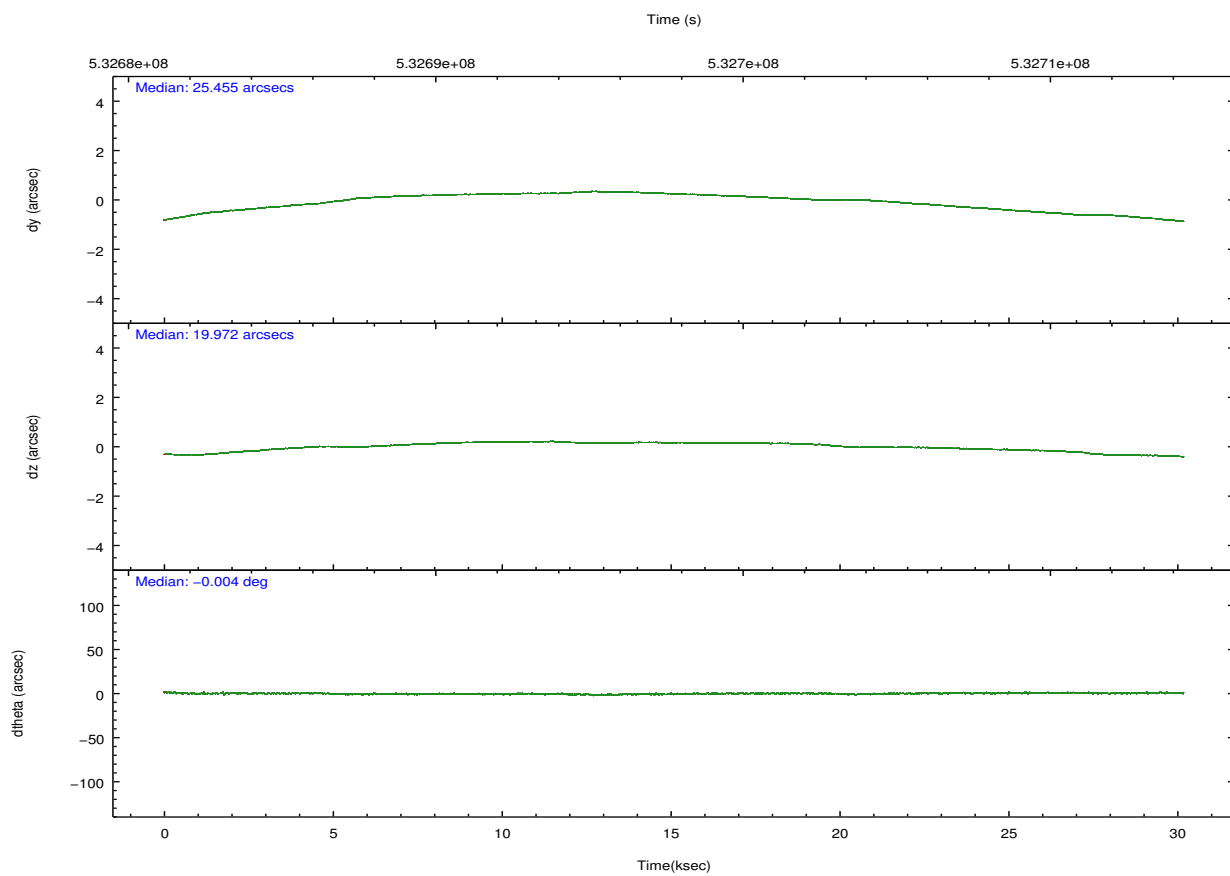
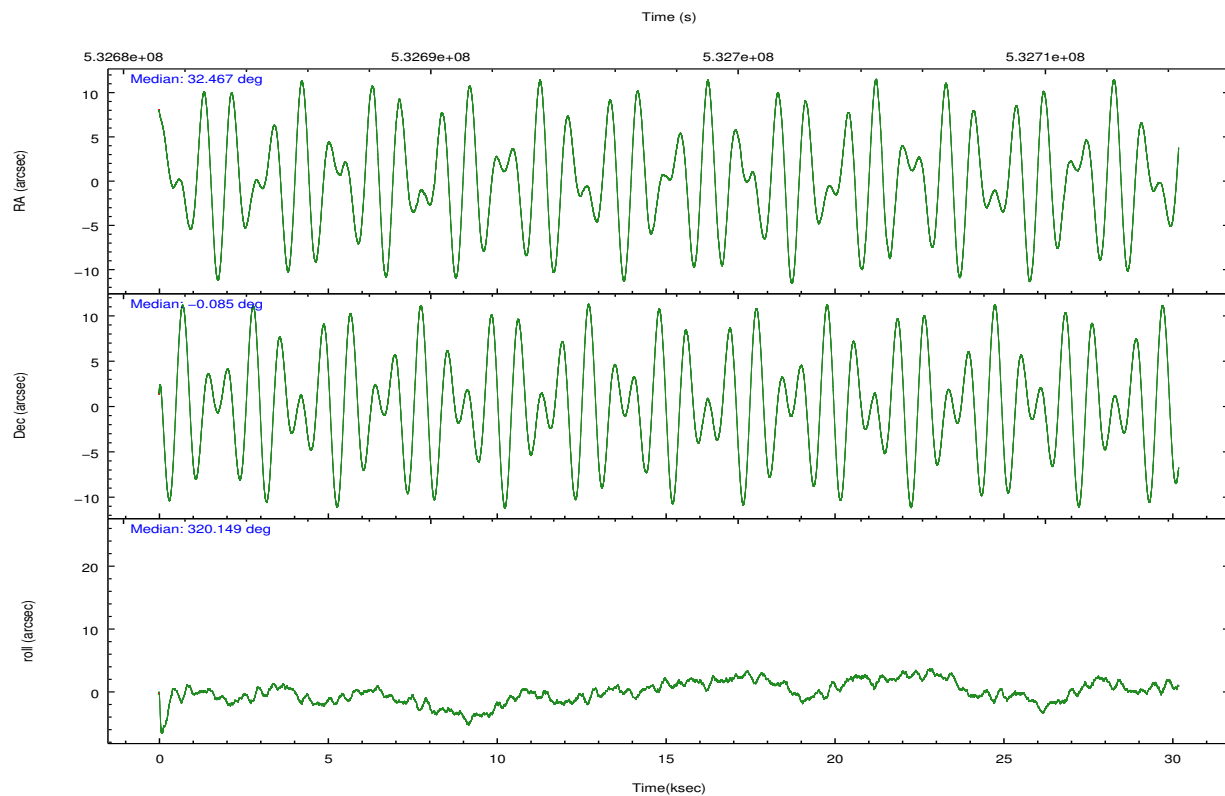
	ccd 7
grade 0 events	8077
	3%
grade 1 events	239
	0%
grade 2 events	19578
	9%
grade 3 events	7898
	3%
grade 4 events	7755
	3%
grade 5 events	22182
	10%
grade 6 events	51539
	23%
grade 7 events	99097
	45%

2.2 Compared Parameters

Parameter	Planned	Actual	Parameter	Planned	Actual
Instrument	ACIS	ACIS	Obspar format version number	7	7
Detector	ACIS-7	ACIS-7	Obspar file type	PREDICTED	ACTUAL
Grating	NONE	NONE	Obspar update status	NONE	UPDATED
Data mode	VFAINT	VFAINT	Number of optional ACIS chips dropped	0	0
Observation mode	POINTING	POINTING	On-chip summing requested	N	N
[deg] Pointing RA	32.439580	32.46668784222009	Subarray requested	NONE	NONE
[deg] Pointing Dec	-0.080858	-0.08519908448372192	Alternating exposures requested	N	N
[deg] Pointing Roll	319.999968	320.1566409229376	[s] Primary exposure time	0.000000	3
[mm] SIM focus pos	-0.684267	-0.6828225247311905			
[mm] SIM defocus	0	0.001444936568705701			
[mm] SIM translation stage pos	-190.132523	-190.1425803651734			
[mm] SIM translation stage offset	0	0.01005778216563158			
[s] Observation start time (MET)	532682829.184000	532681963.92907			
Observation start date	2014-11-18T07:26:02	2014-11-18T07:12:43			
[s] Observation end time (MET)	532712829.184000	532713461.66833			
Observation end date	2014-11-18T15:46:02	2014-11-18T15:57:41			
Read mode	TIMED	TIMED			

2.3 Aspect



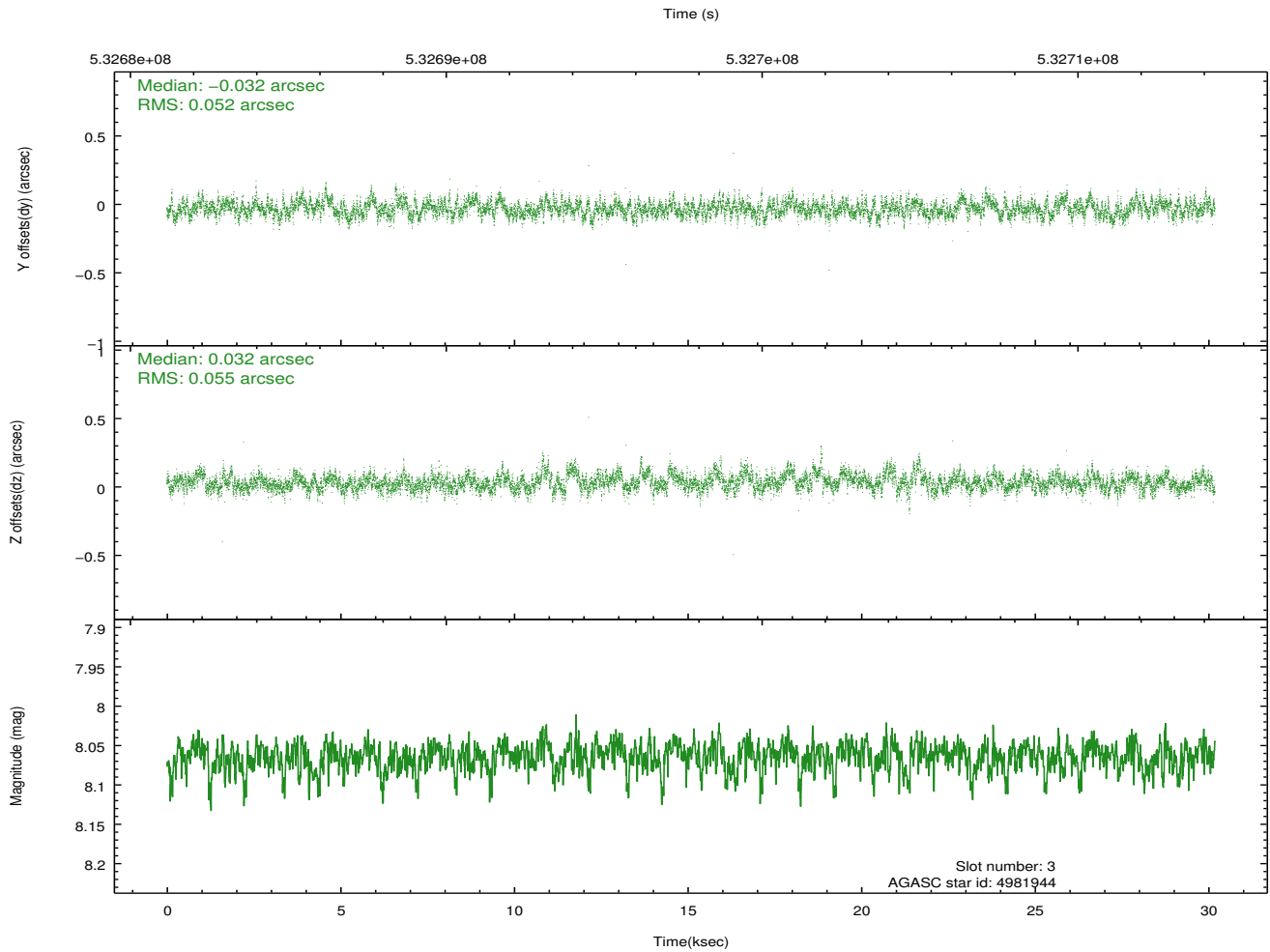
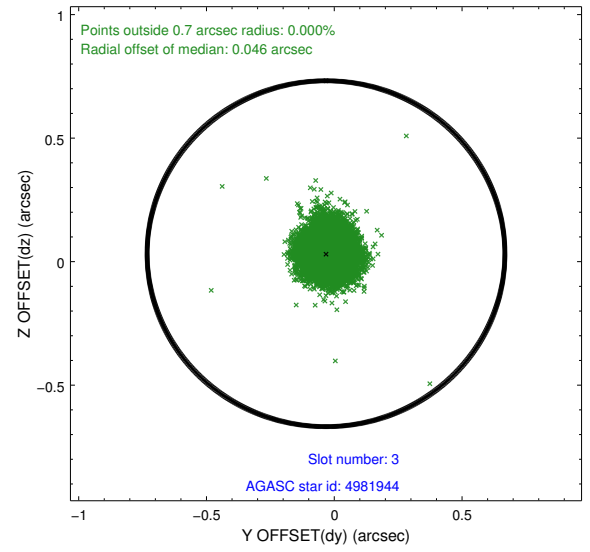
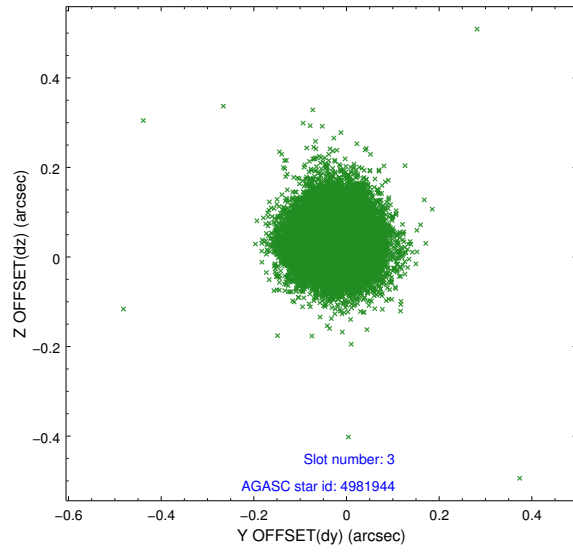


Slot Statistics

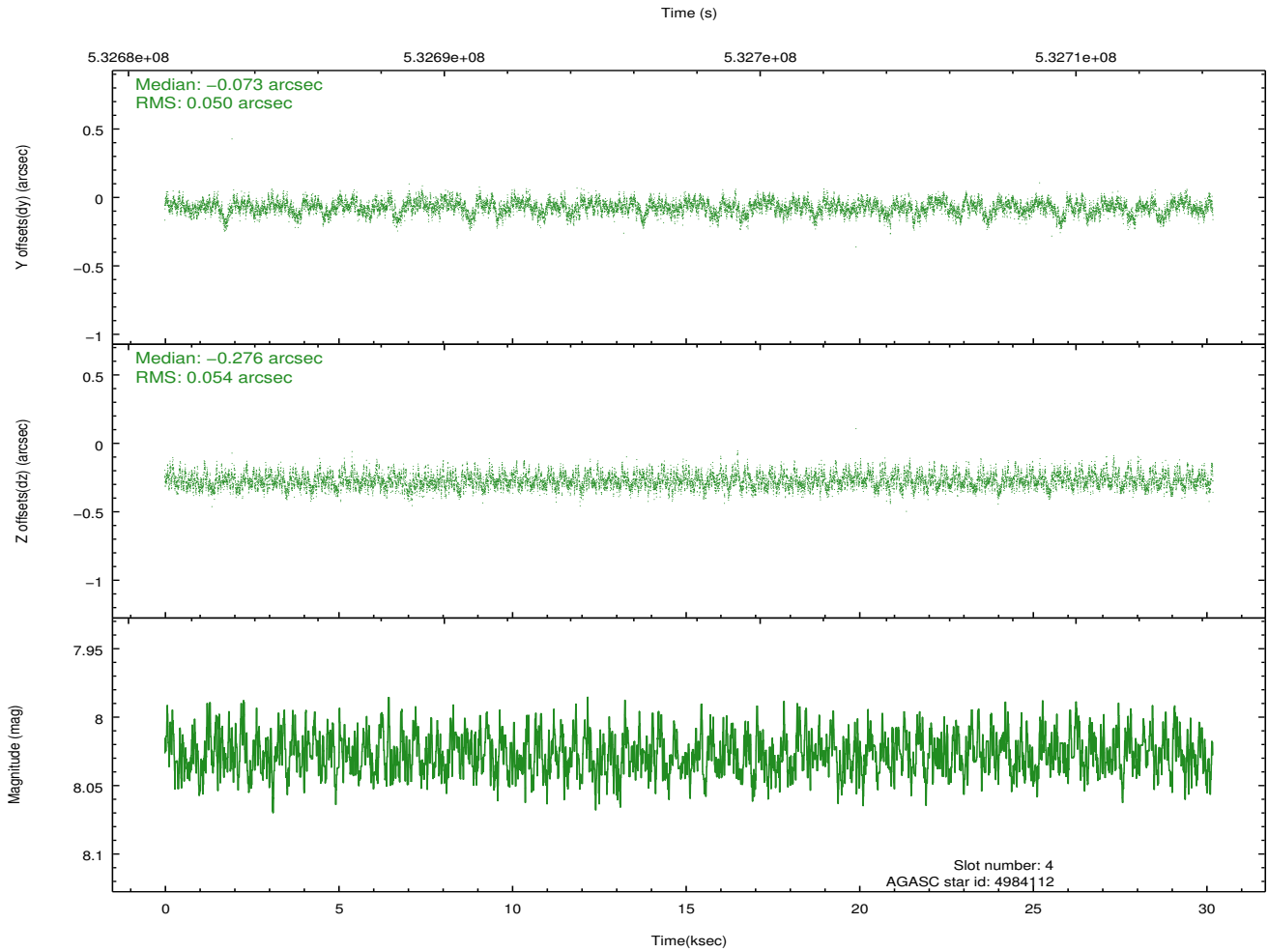
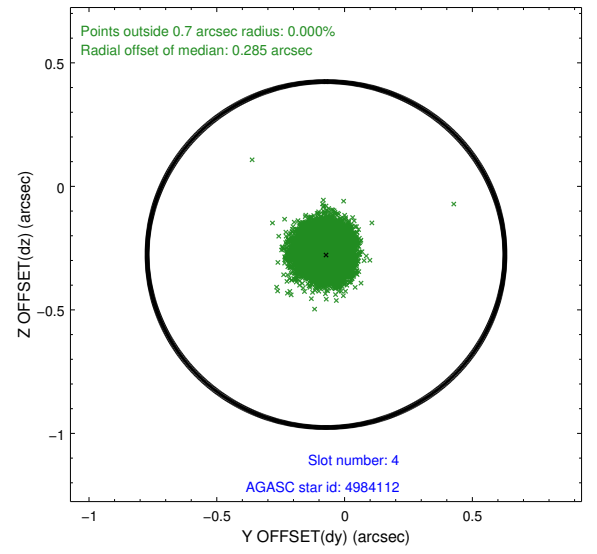
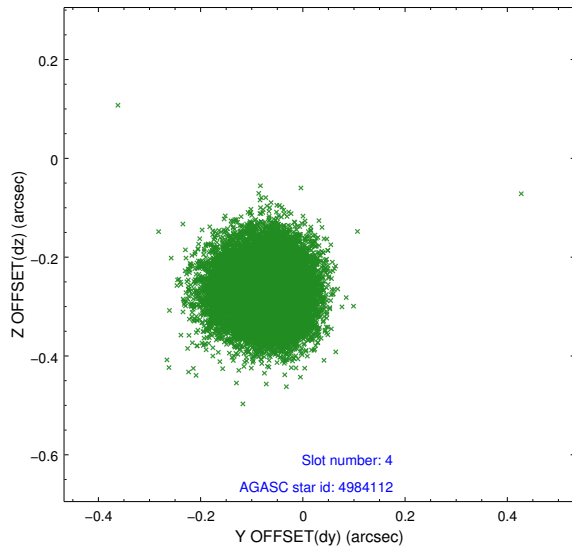
slot	status	used	id	mag	n_pts	med_dy	med_dz	dr1	dr2	ra	dec	mean_y	mean_z
0	FID		ACIS-S-2	7.12	7364	-0.208	-0.025	0.010	0.019	0.000000	0.000000	-778.79	-1741.45
1	FID		ACIS-S-4	7.22	7363	0.414	0.107	0.008	0.014	0.000000	0.000000	2135.06	167.11
2	FID		ACIS-S-5	7.24	7364	-0.237	-0.073	0.008	0.015	0.000000	0.000000	-1831.58	160.66
3	GUIDE	used	4981944	8.06	14723	-0.032	0.032	0.079	0.127	32.552714	0.494378	-1019.19	1848.27
4	GUIDE	used	4984112	8.03	14723	-0.073	-0.276	0.079	0.125	32.933733	0.223546	658.20	1983.09
5	GUIDE	used	614605504	7.29	14725	0.130	0.249	0.085	0.135	32.113697	-0.419301	-114.86	-1686.53
6	GUIDE	used	614728296	8.46	14721	-0.053	-0.066	0.091	0.163	32.601360	-0.092275	473.01	342.02
7	GUIDE	used	4857864	8.53	14714	0.029	0.053	0.089	0.154	32.433296	0.797044	-2048.93	2406.59

2.4 Star Slots

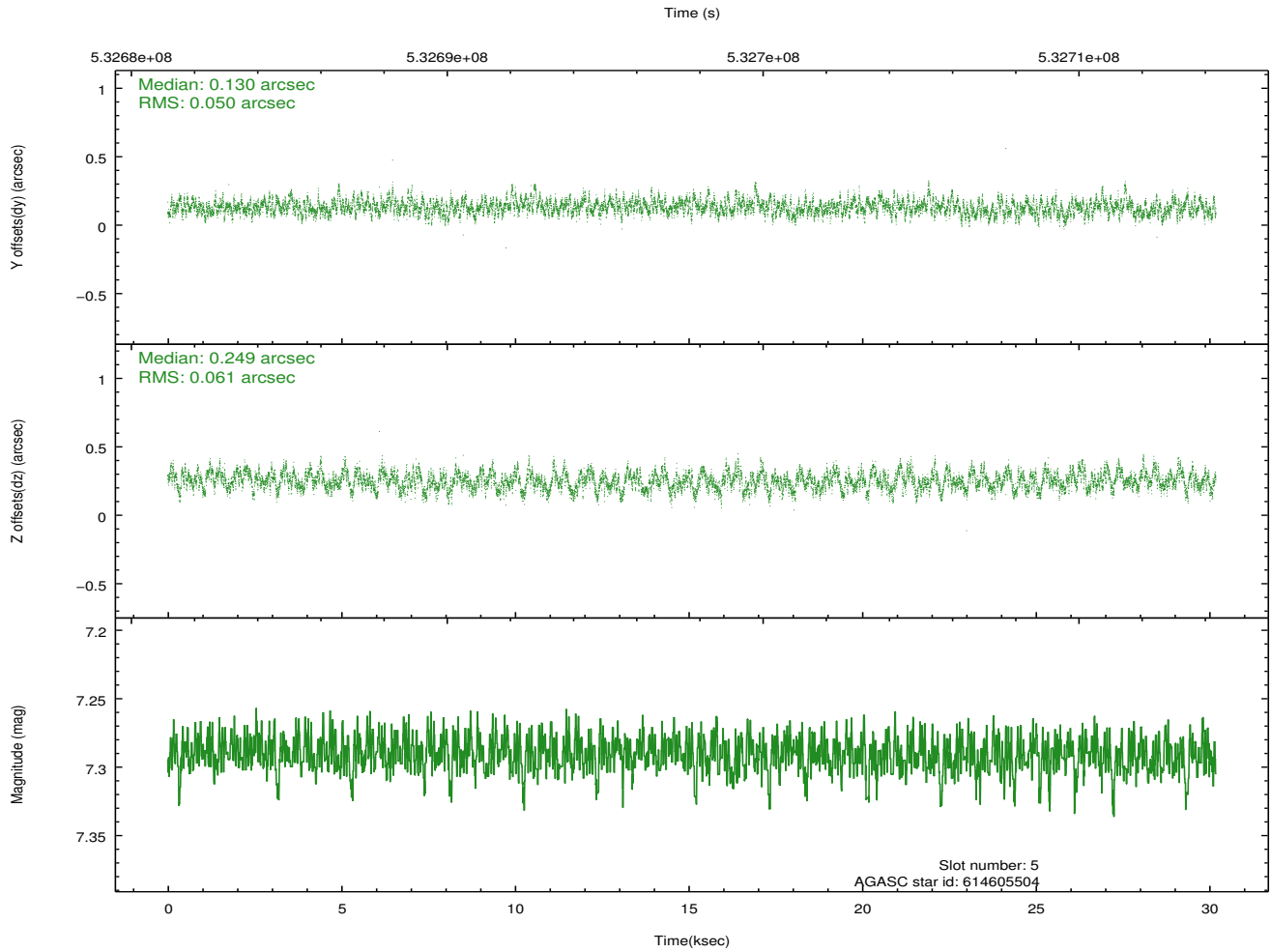
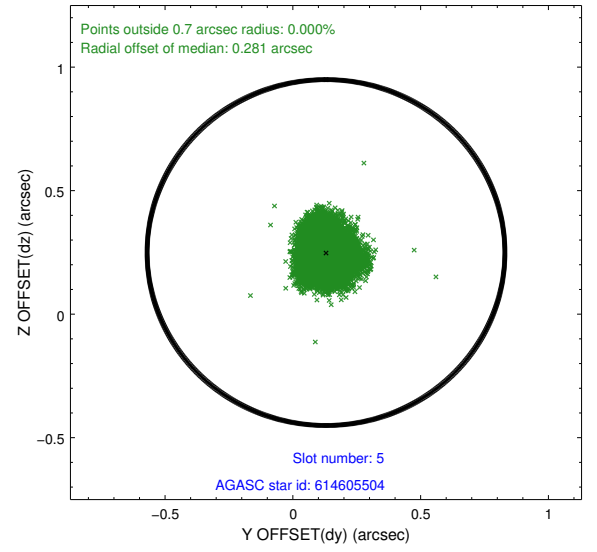
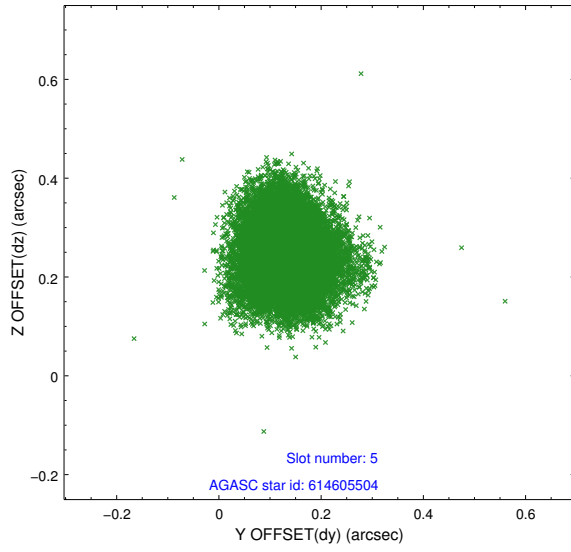
2.4.1 Slot 3



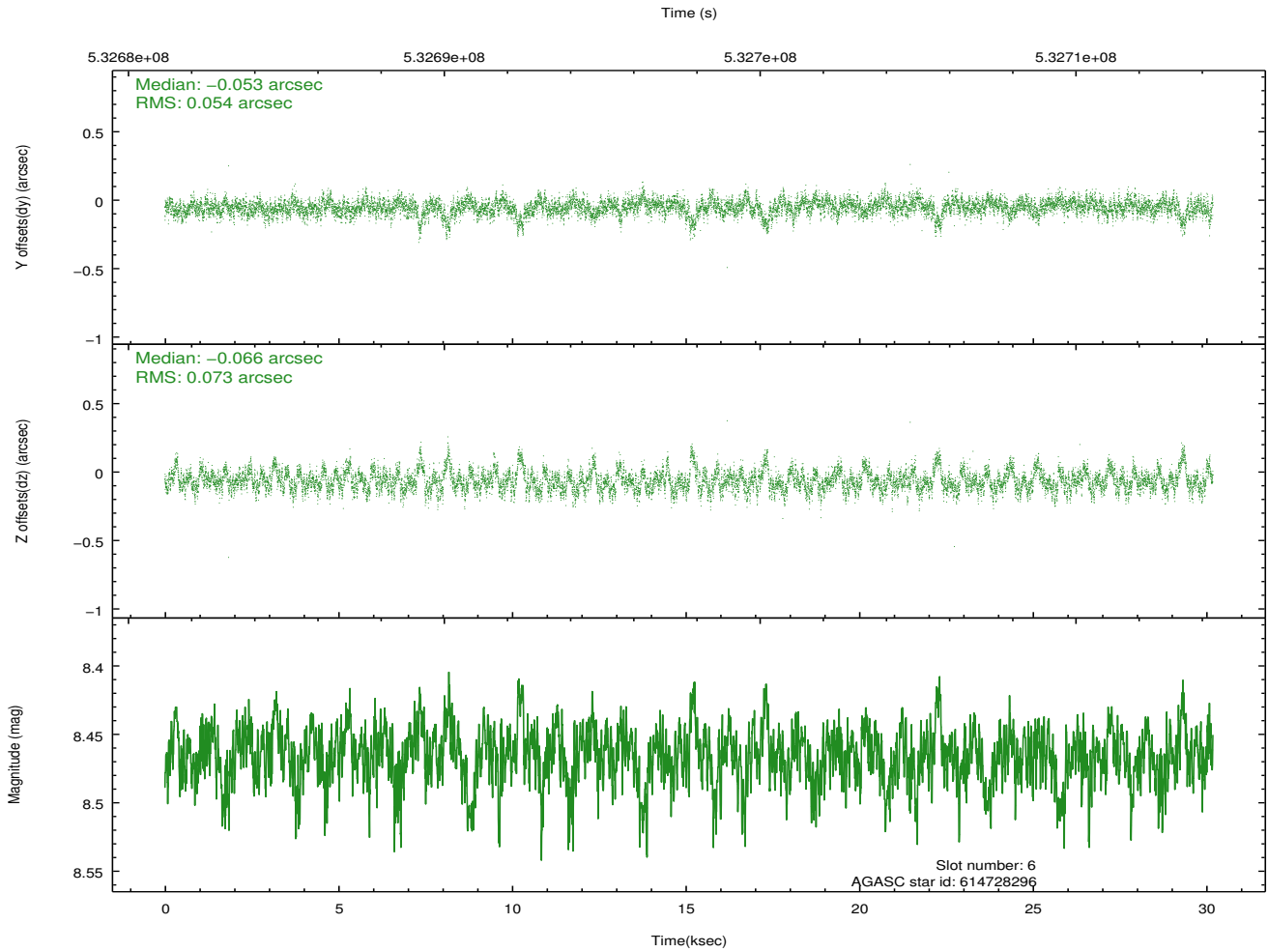
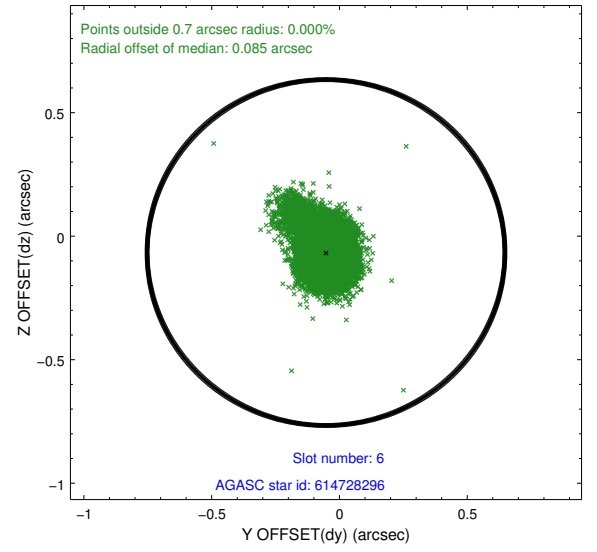
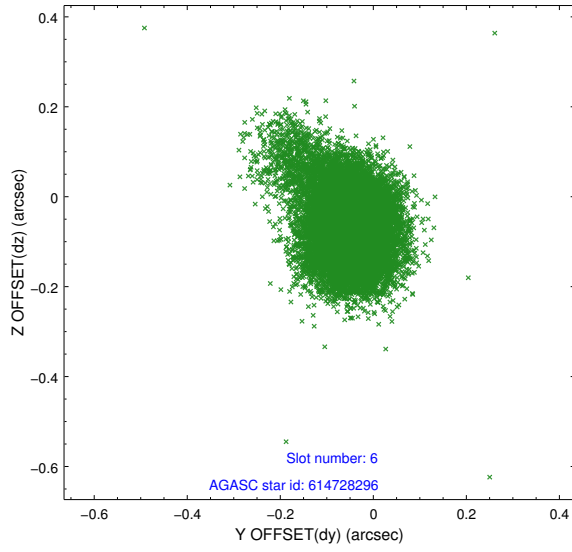
2.4.2 Slot 4



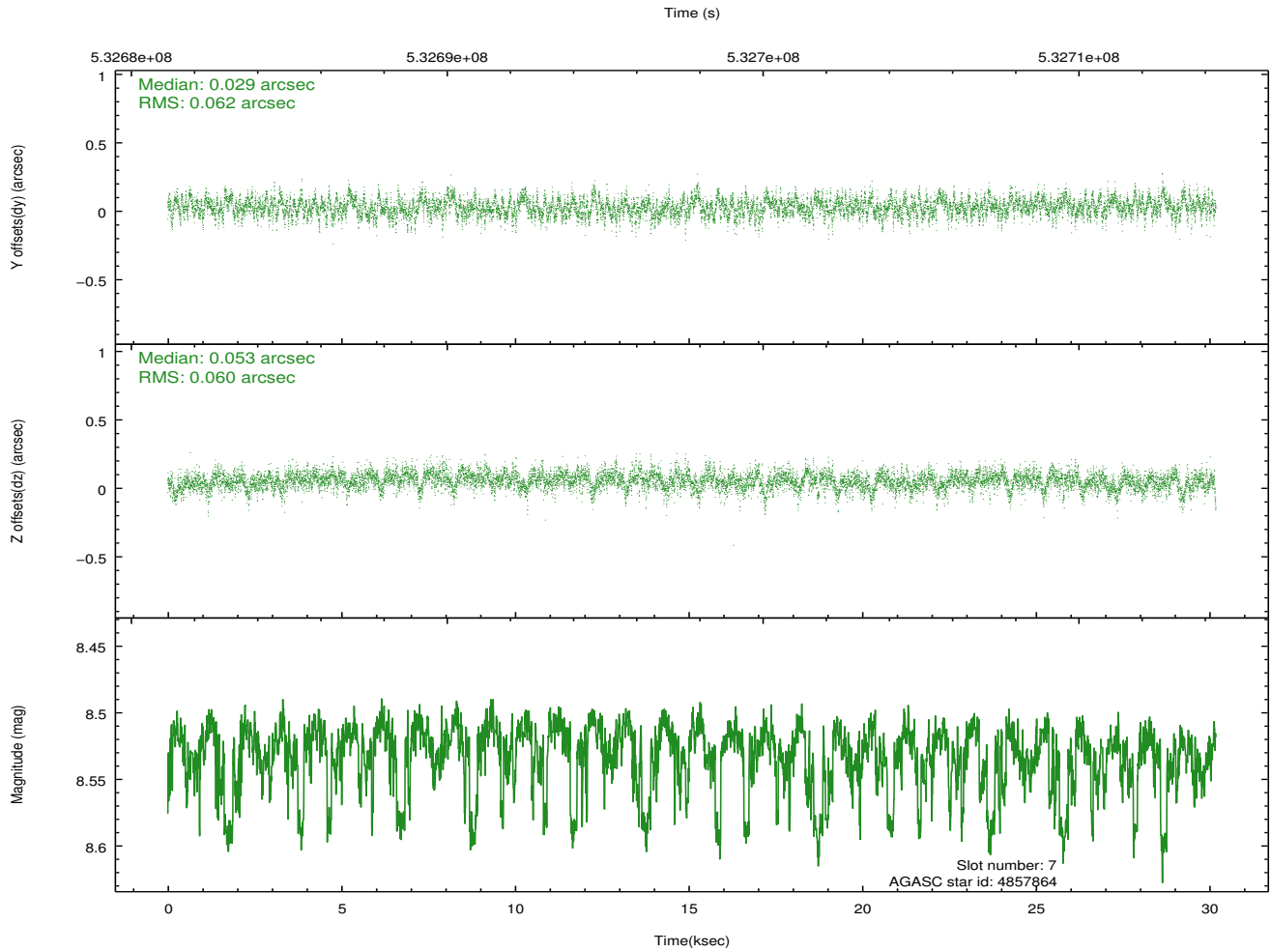
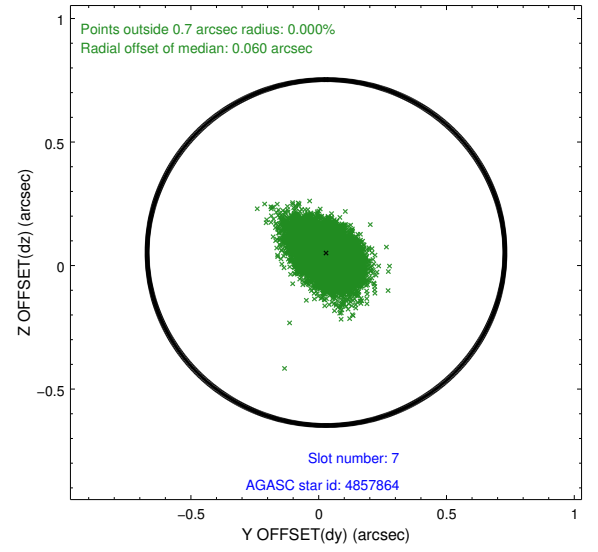
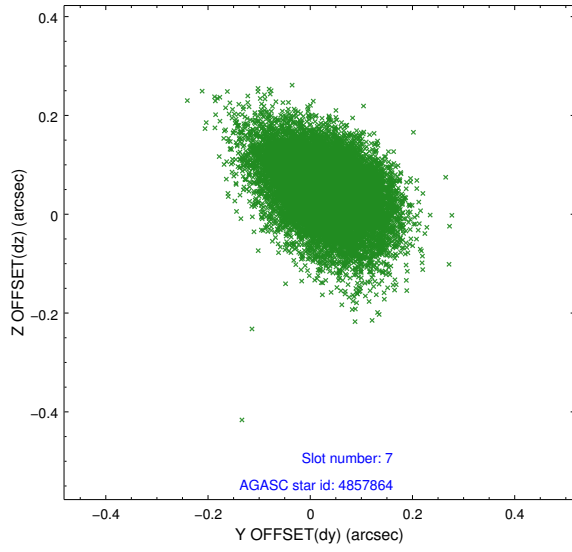
2.4.3 Slot 5



2.4.4 Slot 6

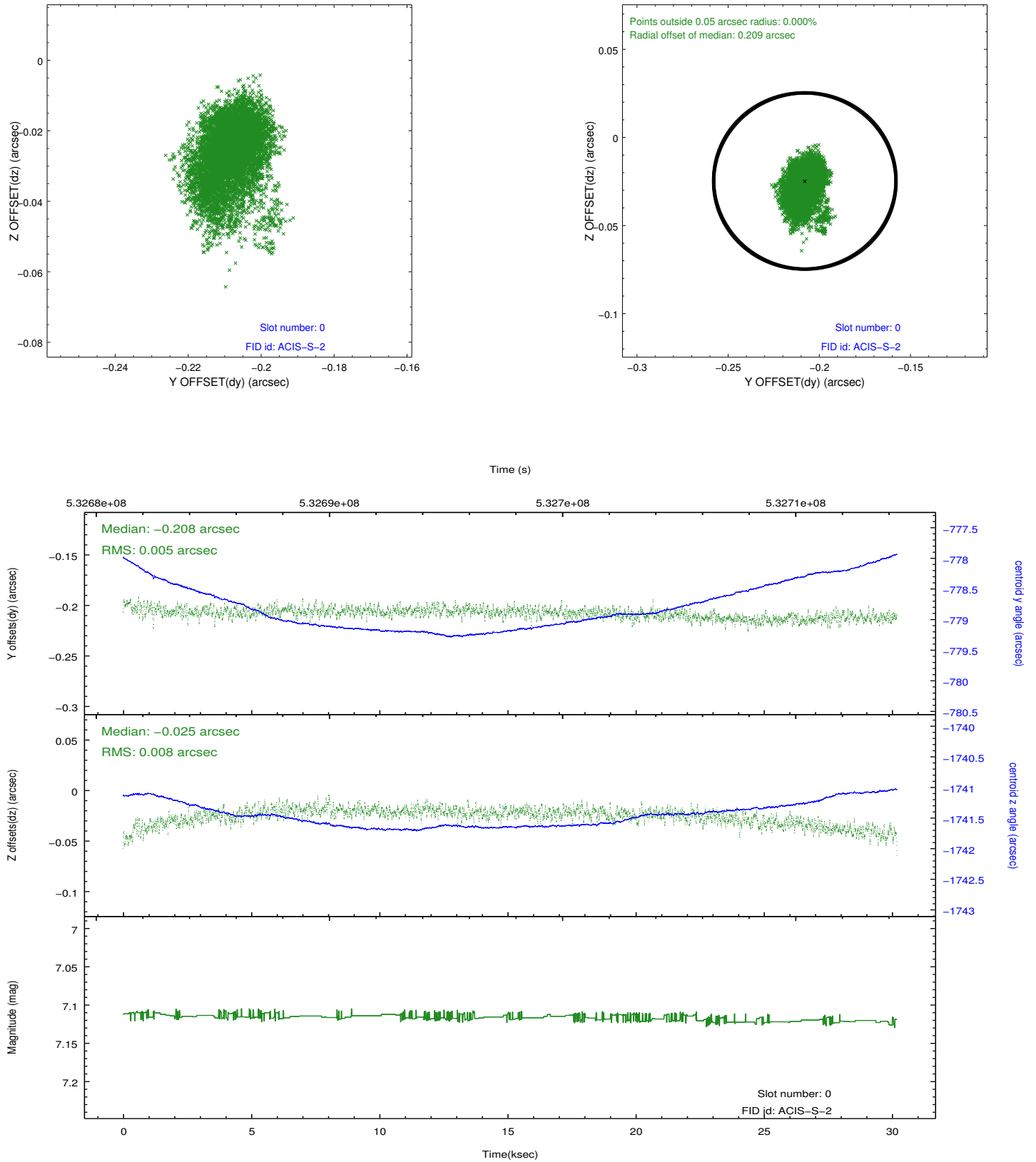


2.4.5 Slot 7

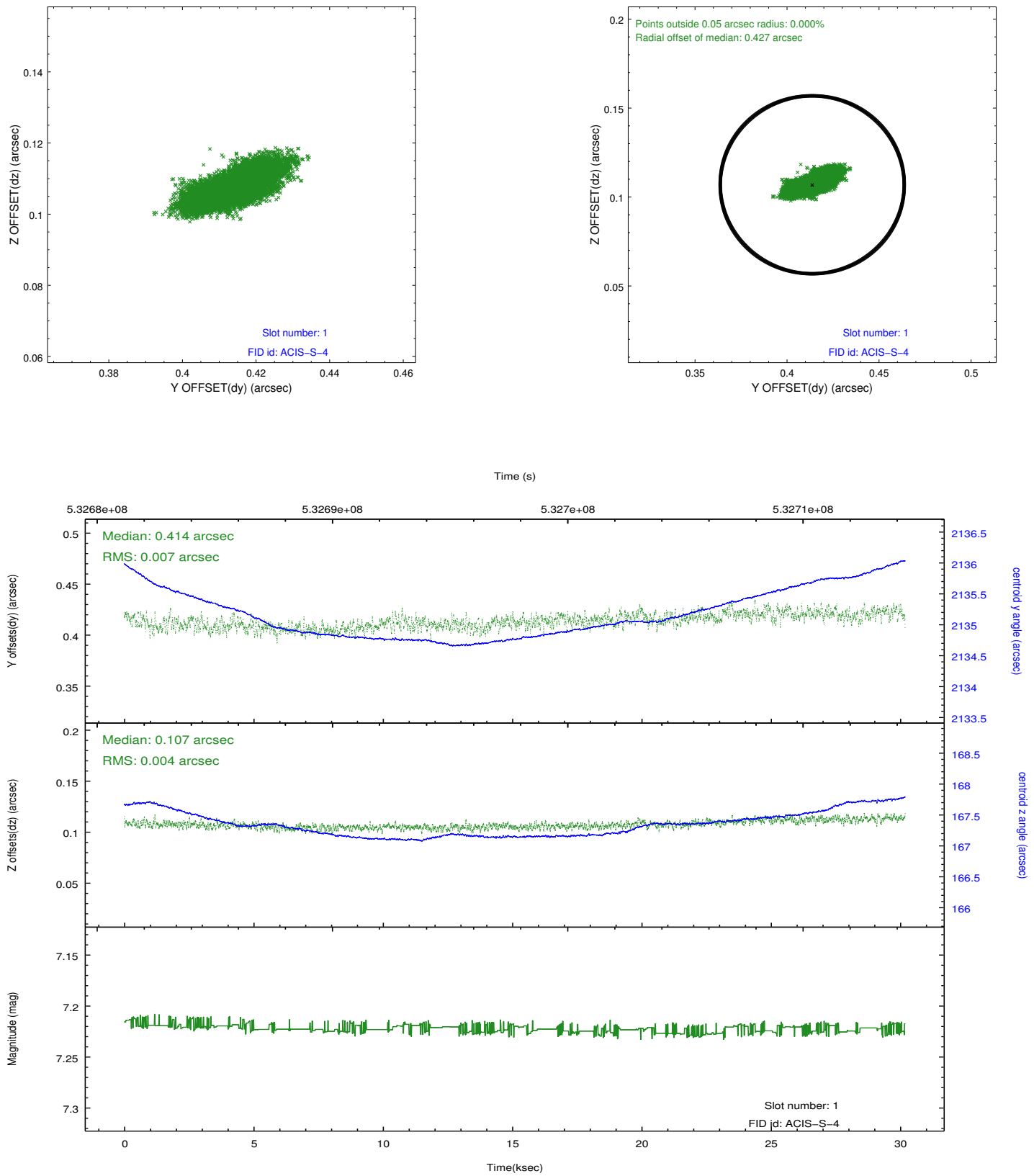


2.5 FID Slots

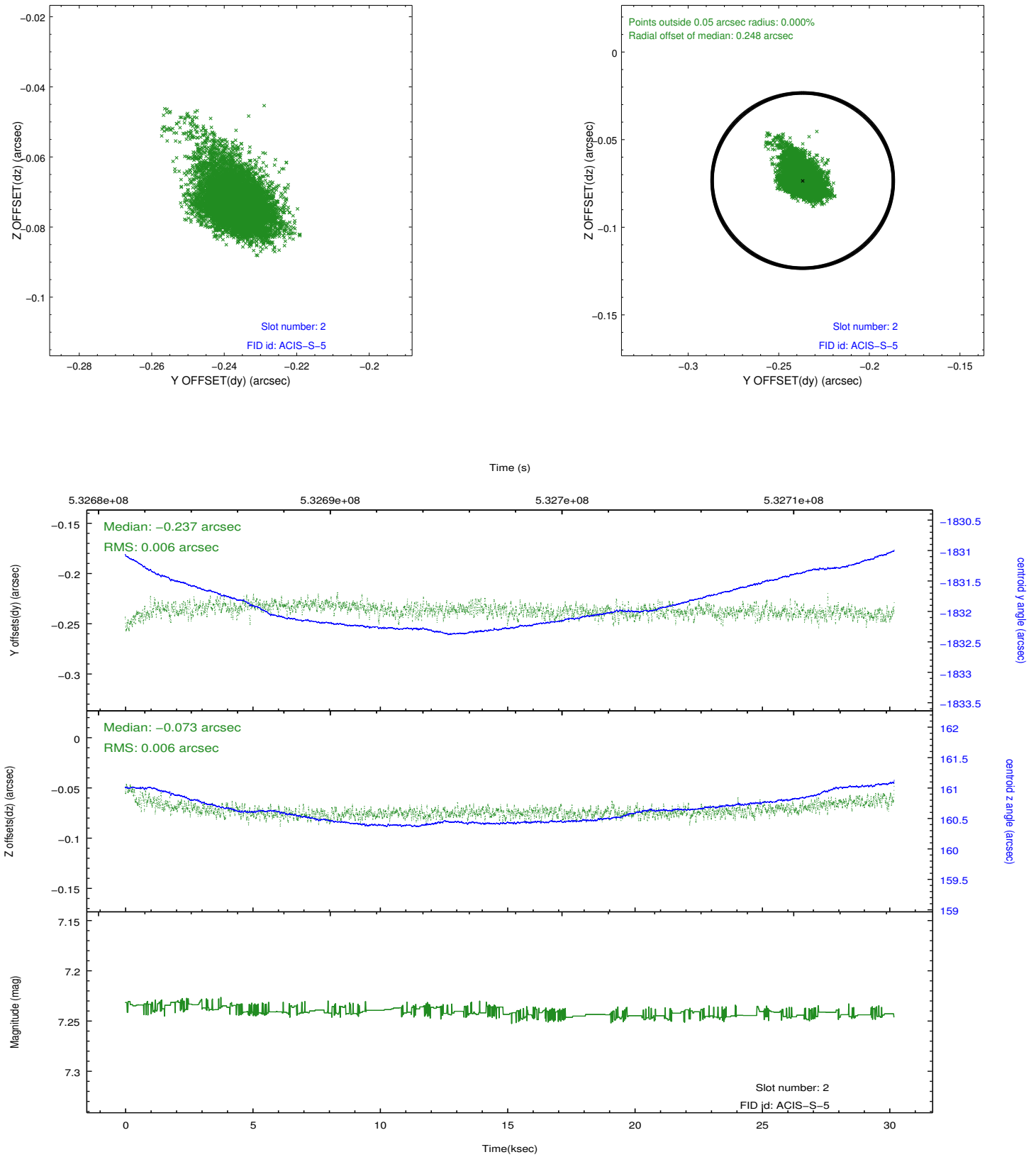
2.5.1 Slot 0



2.5.2 Slot 1



2.5.3 Slot 2



A Summary

A.1 Status

V&V Scientist	Jen Lauer
V&V Date (YYYY-MM-DD)	2014.11.20
V&V Edition	1
V&V Disposition and Status	OK
V&V Charge Time	30.091948094904

A.2 Comments