

# V&V Reference Report

## L2 ASCDS Version : 10.3

Observation 16168 - L2 Version 1  
Chandra X-Ray Center

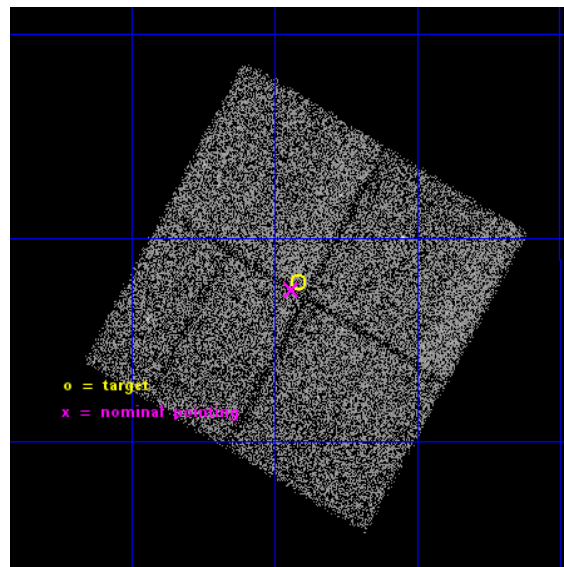
L2 Processing Date : Nov 22 2014

## Contents

<b>1</b>	<b>Front</b>	<b>2</b>
<b>2</b>	<b>OBI</b>	<b>3</b>
2.1	OBI . . . . .	3
2.1.1	Images . . . . .	3
2.1.2	Bias . . . . .	3
2.1.3	Parameters . . . . .	4
2.1.4	Events . . . . .	4
2.2	Compared Parameters . . . . .	5
2.3	Aspect . . . . .	6
2.4	Star Slots . . . . .	9
2.4.1	Slot 3 . . . . .	9
2.4.2	Slot 4 . . . . .	10
2.4.3	Slot 5 . . . . .	11
2.4.4	Slot 6 . . . . .	12
2.4.5	Slot 7 . . . . .	13
2.5	FID Slots . . . . .	14
2.5.1	Slot 0 . . . . .	14
2.5.2	Slot 1 . . . . .	15
2.5.3	Slot 2 . . . . .	16
<b>A</b>	<b>Summary</b>	<b>17</b>
A.1	Status . . . . .	17
A.2	Comments . . . . .	17

# 1 Front

seq_num	901108	Sequence number
obs_id	16168	Observation id
title	PROBING THE ENERGY THRESHOLD FOR TRIGGERED STAR FORMATION	Proposal
observer	Dr Chip Kobulnicky	Principal investigator
object	G38.9-0.44	Source name
dtcycle	0	&#160
cycle	P	events from which exps? Prim/Second/Both
ra_targ	286.479167	Observer's specified target RA [deg]
dec_targ	5.796667	Observer's specified target Dec [deg]
ra_nom	286.48519952502	Nominal RA [deg]
dec_nom	5.7911195591663	Nominal Dec [deg]
roll_nom	299.74711662062	Nominal Roll [deg]
revision	1	Processing version of data
ontime	25087.468488693	Sum of GTIs [s]
livetime	24759.682243763	Livetime [s]
ontime0	25087.345368683	Sum of GTIs [s]
ontime1	25087.386408687	Sum of GTIs [s]
ontime2	25081.145517826	Sum of GTIs [s]
ontime3	25087.468488693	Sum of GTIs [s]
l2events	54105	Number of level 2 events

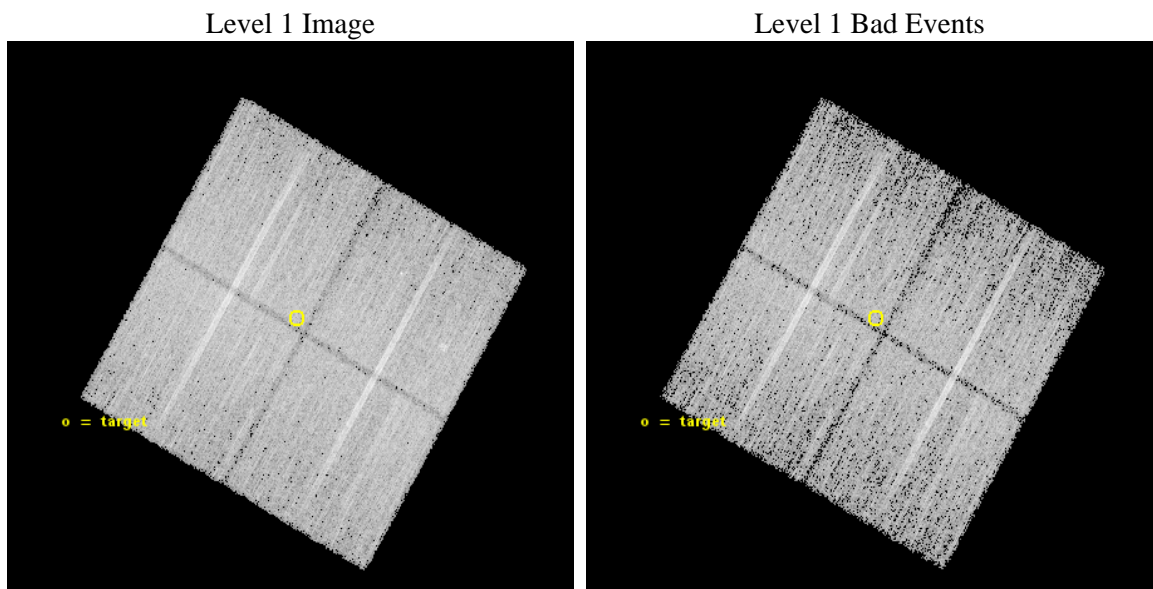




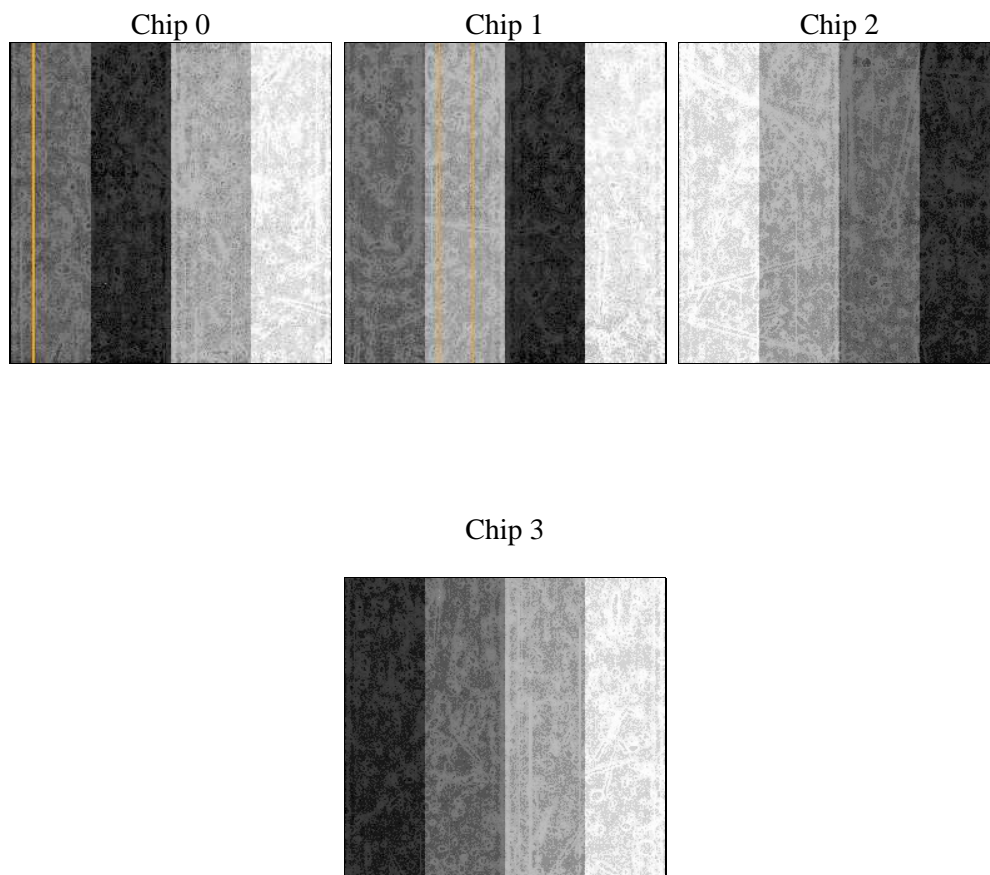
## 2 OBI

### 2.1 OBI

#### 2.1.1 Images



#### 2.1.2 Bias



### 2.1.3 Parameters

obi_num	0	Obi number	sched_exp_time	25000.711000	[s] Scheduled observation exposure time
ascdsver	10.3	Processing system revision	ontime	25087.468488693	Sum of GTIs [s]
caldsver	4.6.4	&#160	ontime0	25087.345368683	Sum of GTIs [s]
date	2014-11-22T18:30:58	Date and time of file creation	ontime1	25087.386408687	Sum of GTIs [s]
revision	1	Processing version of data	ontime2	25081.145517826	Sum of GTIs [s]
			ontime3	25087.468488693	Sum of GTIs [s]
			l1events	508986	Number of level 1 events

### 2.1.4 Events

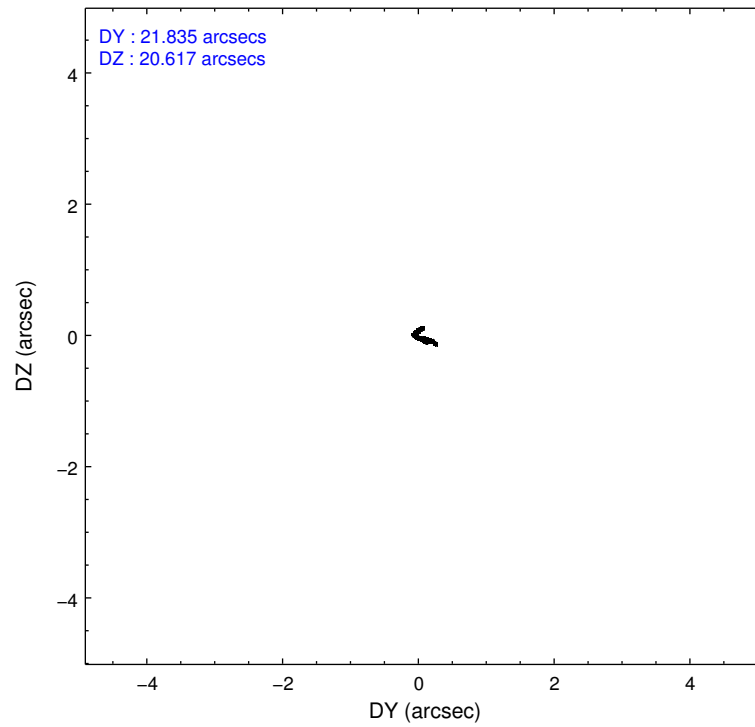
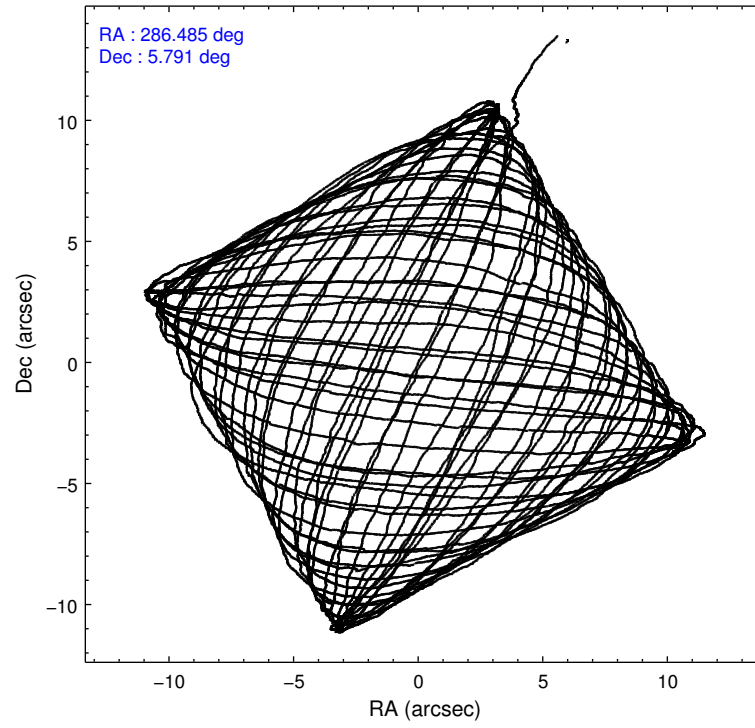
	ccd 0	ccd 1	ccd 2	ccd 3
level 1 events	122854	124193	133325	128614
rejected events	106877	106121	117919	113006
rejected %	86%	85%	88%	87%

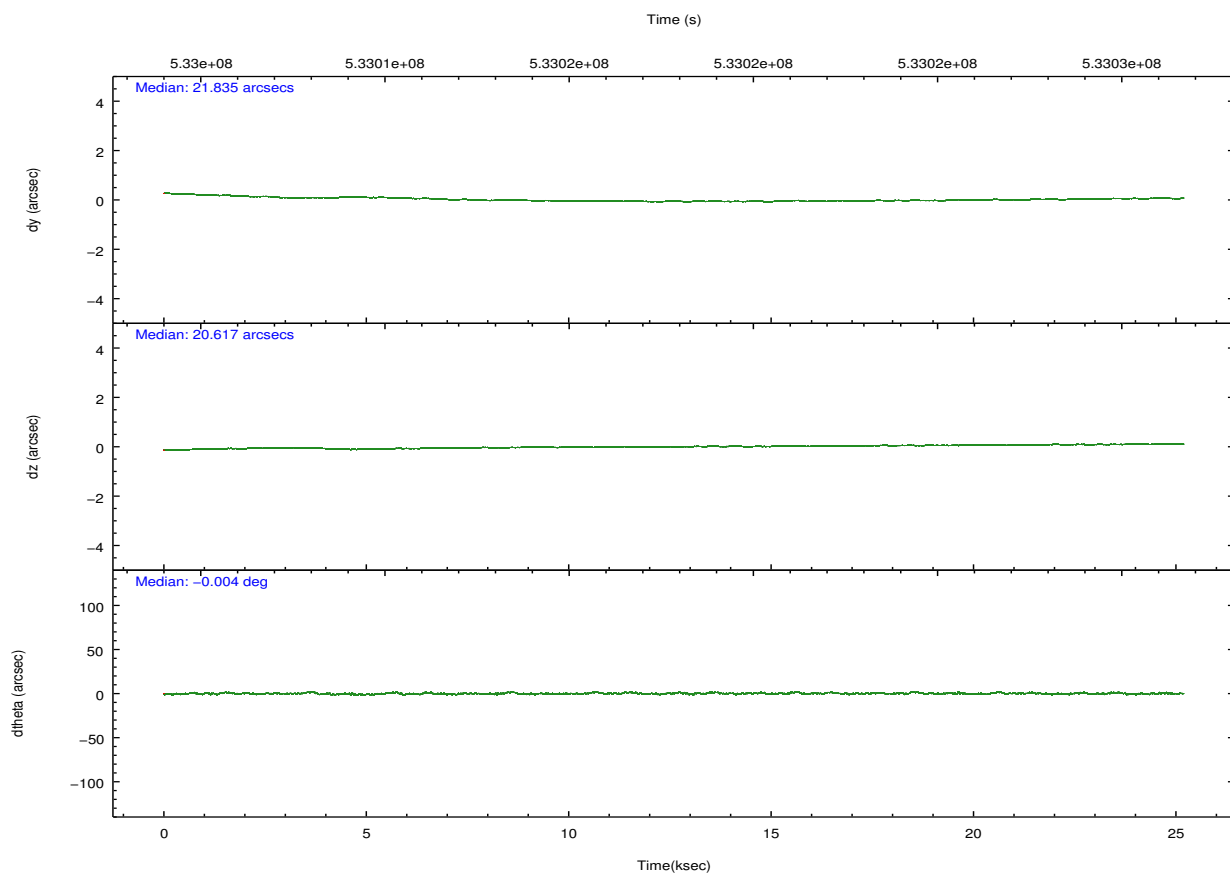
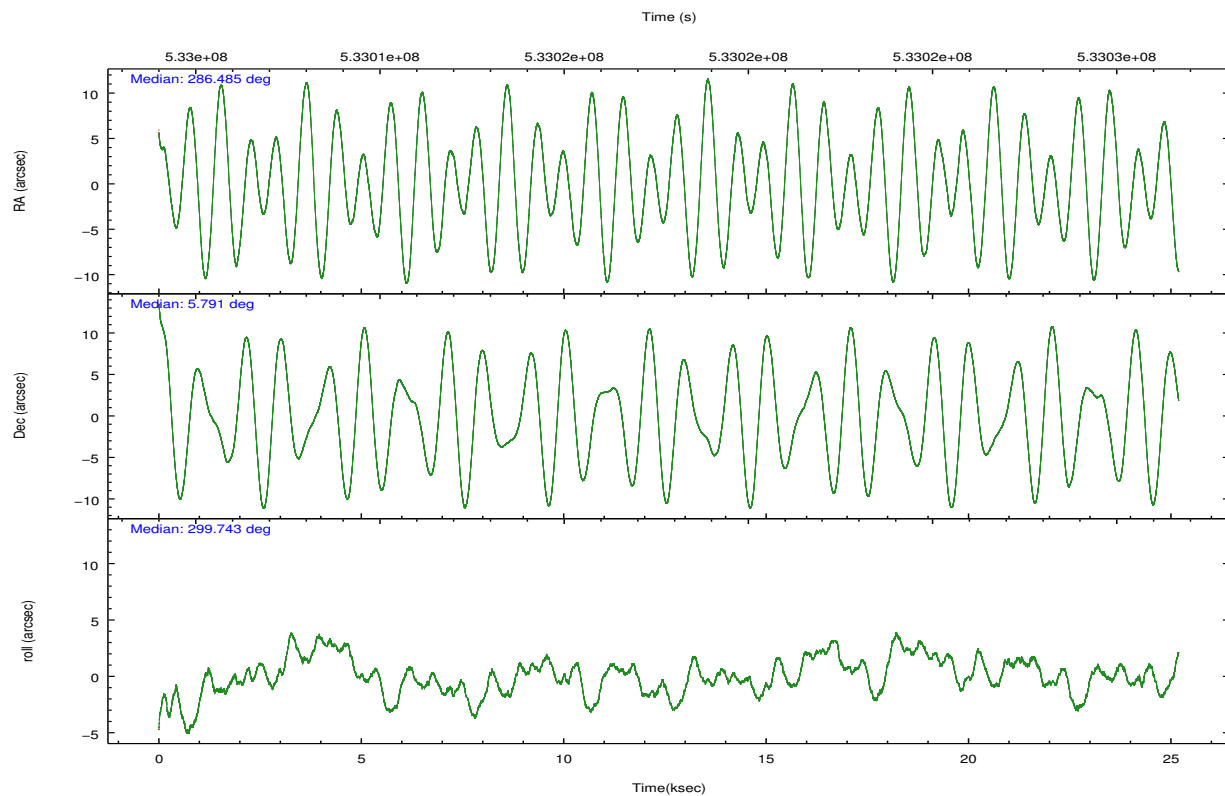
	ccd 0	ccd 1	ccd 2	ccd 3
grade 0 events	5488	6497	5373	5744
	4%	5%	4%	4%
grade 1 events	66	71	77	73
	0%	0%	0%	0%
grade 2 events	4139	4416	3917	3380
	3%	3%	2%	2%
grade 3 events	1598	1668	1534	1601
	1%	1%	1%	1%
grade 4 events	1562	1685	1597	1627
	1%	1%	1%	1%
grade 5 events	6082	6685	5814	7106
	4%	5%	4%	5%
grade 6 events	3192	3811	2989	3259
	2%	3%	2%	2%
grade 7 events	100727	99360	112024	105824
	81%	80%	84%	82%

## 2.2 Compared Parameters

Parameter	Planned	Actual	Parameter	Planned	Actual
Instrument	ACIS	ACIS	Obspar format version number	7	7
Detector	ACIS-0123	ACIS-0123	Obspar file type	PREDICTED	ACTUAL
Grating	NONE	NONE	Obspar update status	NONE	UPDATED
Data mode	VFAINT	VFAINT	Number of optional ACIS chips dropped	0	0
Observation mode	POINTING	POINTING	On-chip summing requested	N	N
[deg] Pointing RA	286.461184	286.4851995250241	Subarray requested	NONE	NONE
[deg] Pointing Dec	5.804919	5.79111955916625	Alternating exposures requested	N	N
[deg] Pointing Roll	299.540860	299.7471166206171	[s] Primary exposure time	0.000000	3.1
[mm] SIM focus pos	-0.782348	-0.7809083437167272			
[mm] SIM defocus	0	0.001439871863259334			
[mm] SIM translation stage pos	-233.592463	-233.5874344608287			
[mm] SIM translation stage offset	0	-0.005018542100998502			
[s] Observation start time (MET)	533005440.184000	533004500.18452			
Observation start date	2014-11-22T01:02:53	2014-11-22T00:48:20			
[s] Observation end time (MET)	533030440.184000	533030677.14848			
Observation end date	2014-11-22T07:59:33	2014-11-22T08:04:37			
Read mode	TIMED	TIMED			

## 2.3 Aspect



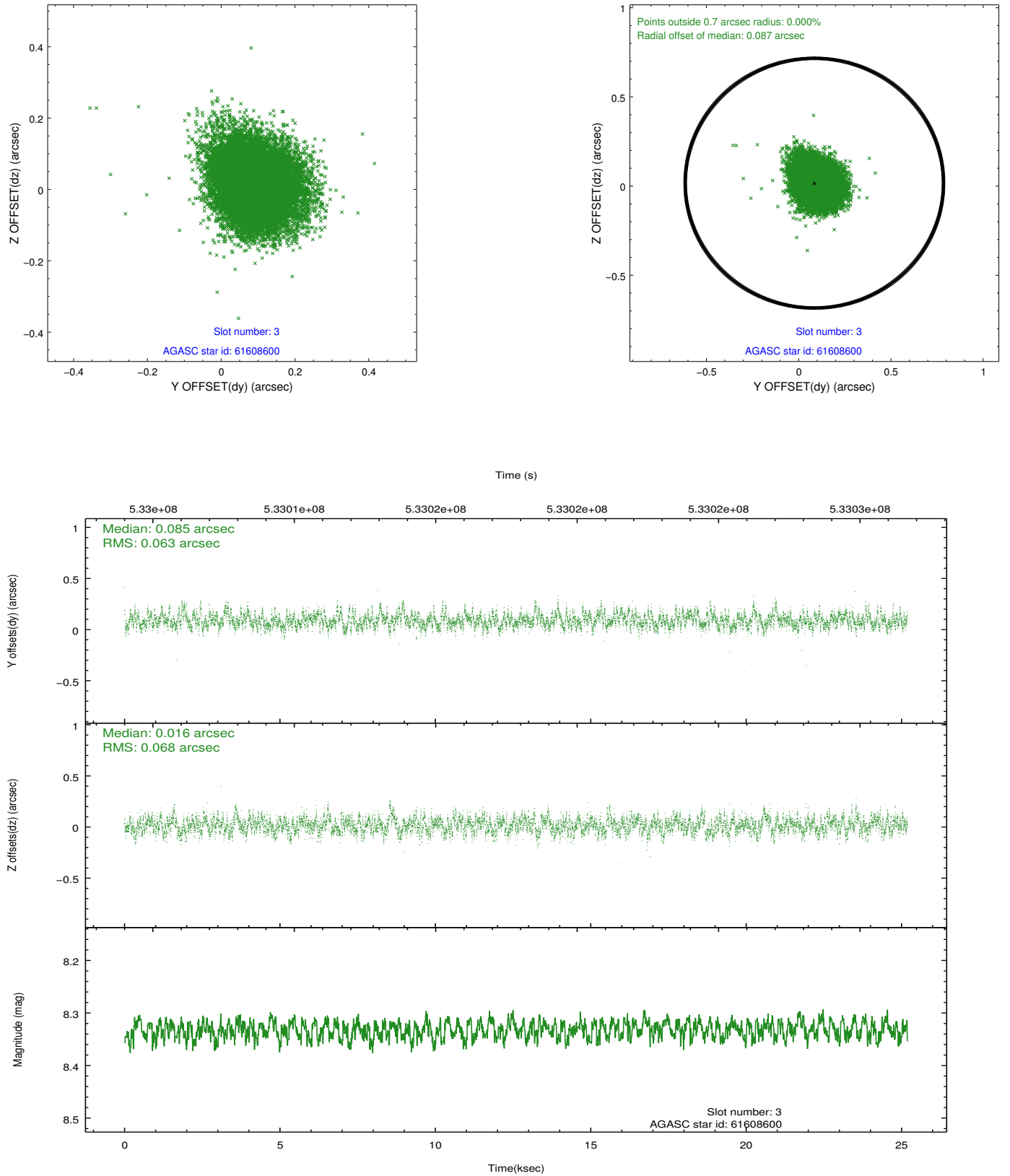


### Slot Statistics

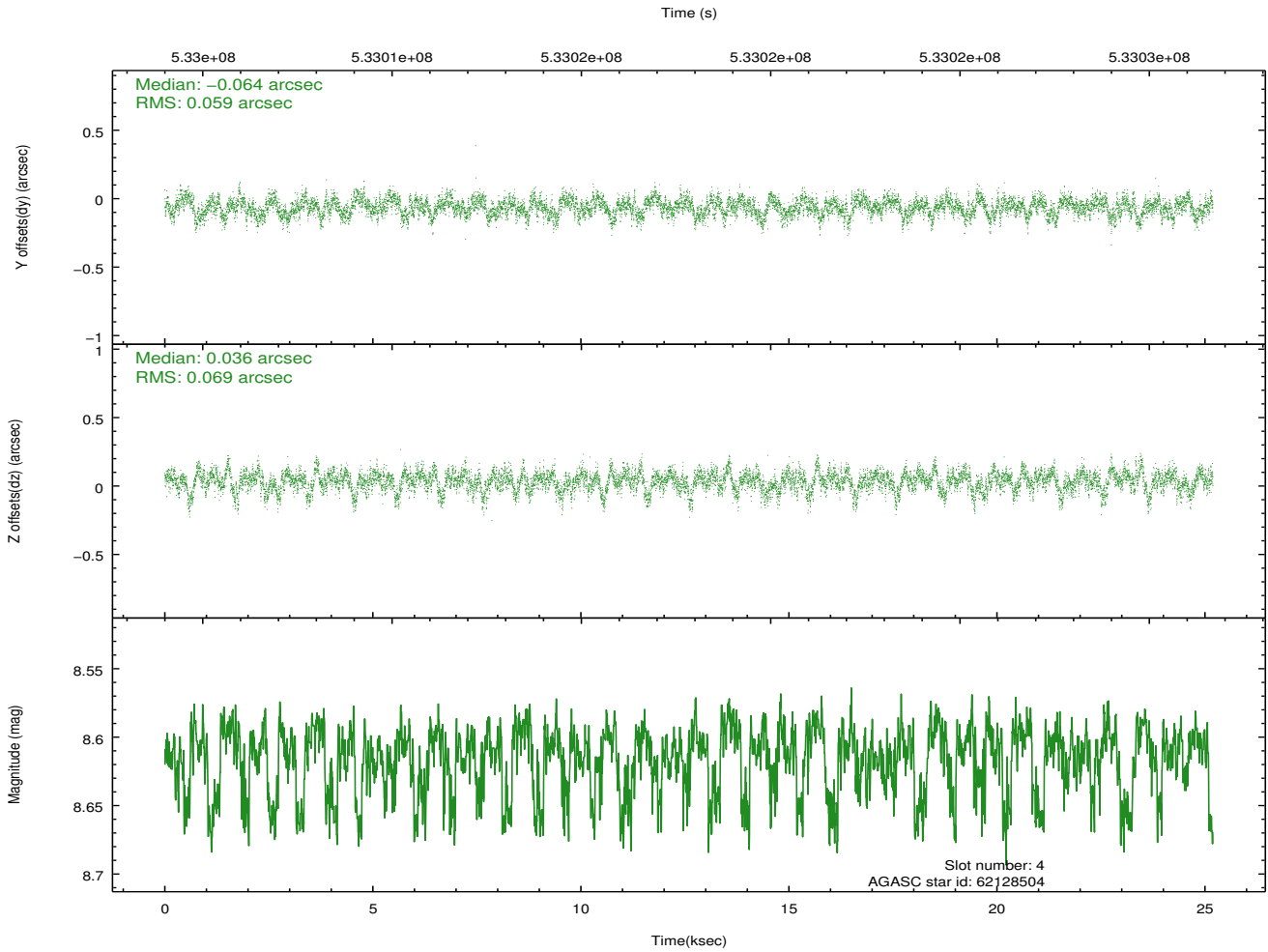
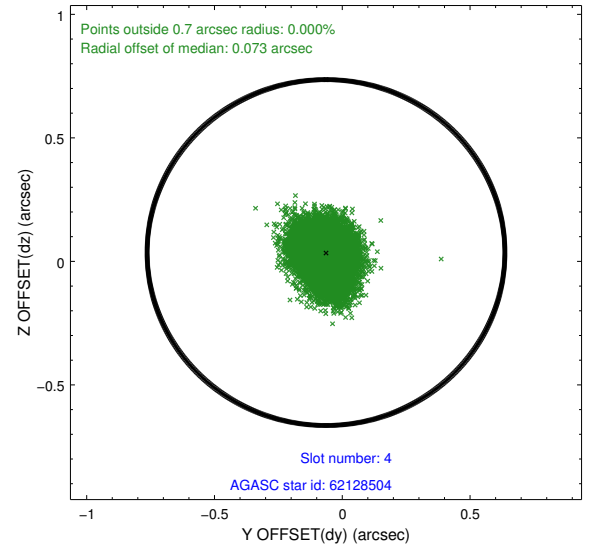
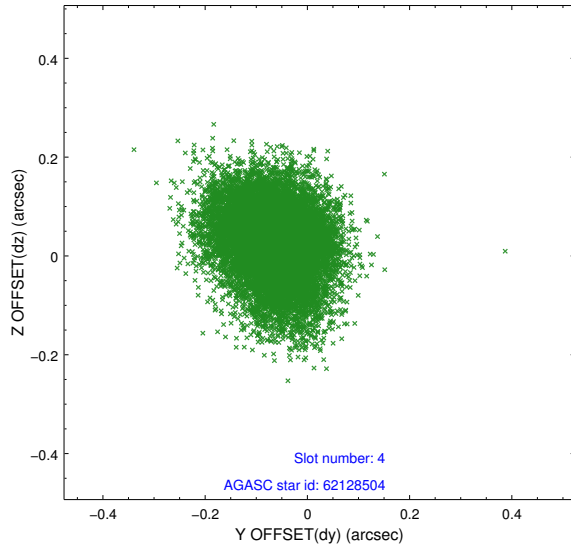
slot	status	used	id	mag	n_pts	med_dy	med_dz	dr1	dr2	ra	dec	mean_y	mean_z
0	FID		ACIS-I-1	7.05	6144	-0.041	-0.031	0.017	0.027	0.000000	0.000000	917.40	-844.36
1	FID		ACIS-I-4	6.99	6145	0.213	0.064	0.012	0.020	0.000000	0.000000	2137.70	1055.52
2	FID		ACIS-I-5	7.04	6144	-0.270	0.037	0.012	0.020	0.000000	0.000000	-1830.74	1053.35
3	GUIDE	used	61608600	8.33	12288	0.085	0.016	0.098	0.159	286.035916	5.239962	1018.77	-2329.17
4	GUIDE	used	62128504	8.61	12283	-0.064	0.036	0.096	0.159	286.637438	6.282247	-1183.76	1396.00
5	GUIDE	used	62132240	8.26	12283	0.134	0.126	0.076	0.124	285.977341	5.845283	-980.80	-1435.13
6	GUIDE	used	62133008	8.10	12286	-0.005	0.060	0.073	0.119	285.856821	5.994383	-1660.71	-1545.25
7	GUIDE	used	61738712	7.86	12219	-0.156	-0.233	0.083	0.129	287.287123	5.498280	2417.93	2031.92

## 2.4 Star Slots

### 2.4.1 Slot 3

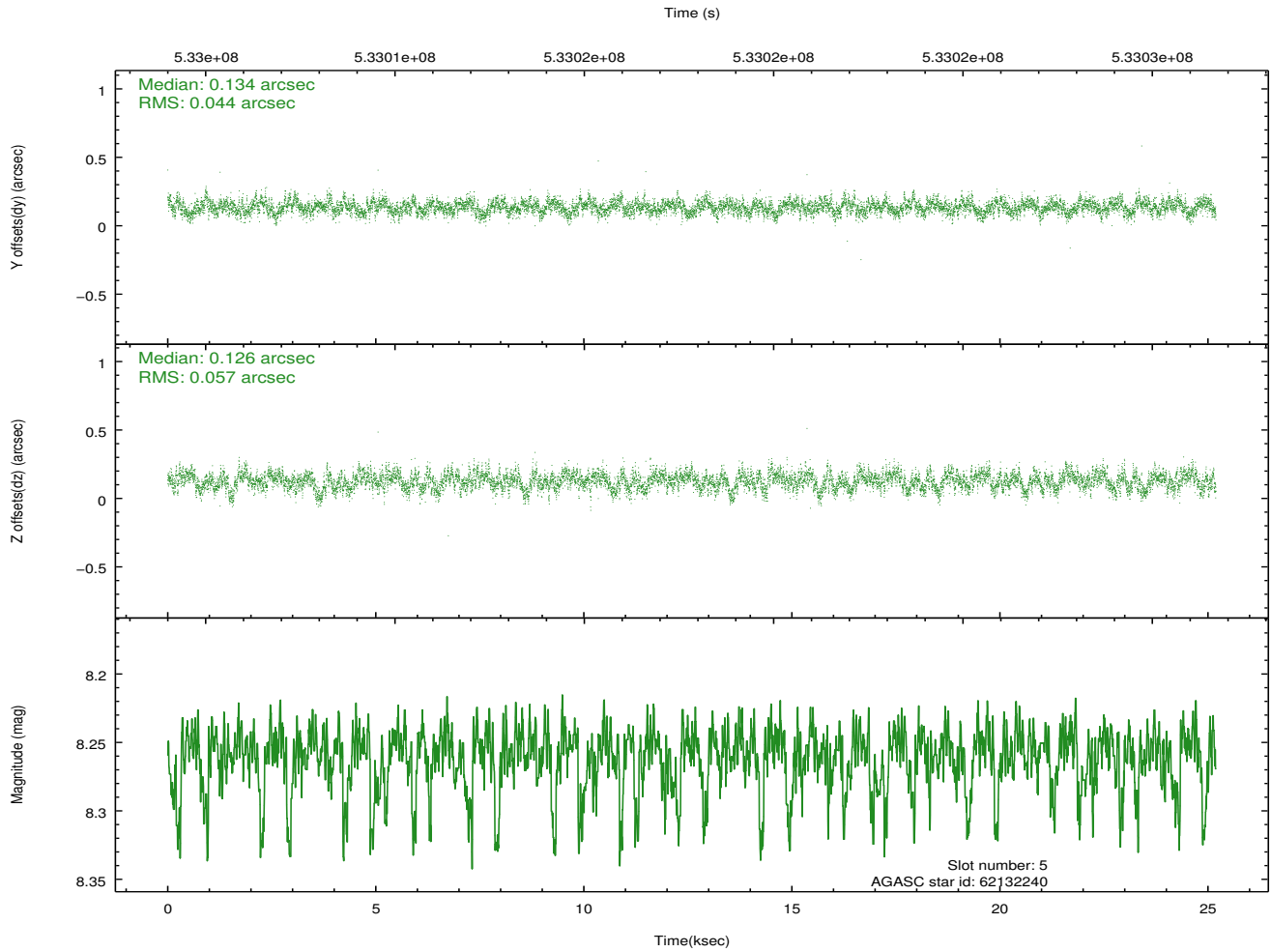
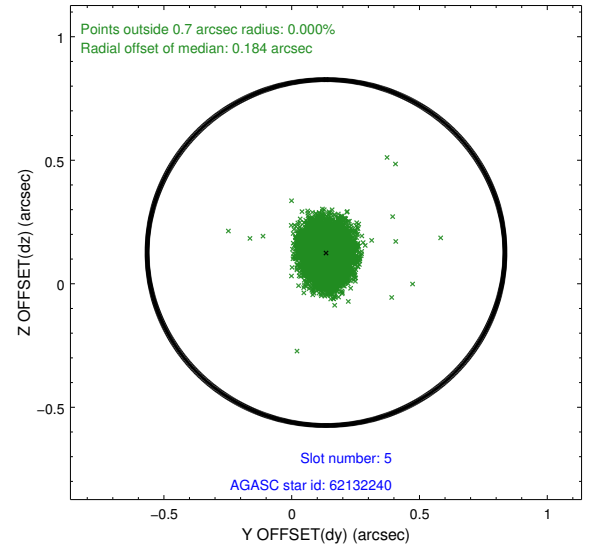
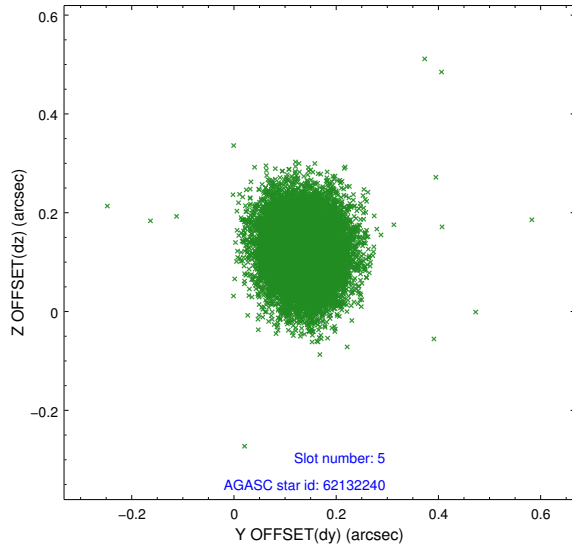


## 2.4.2 Slot 4

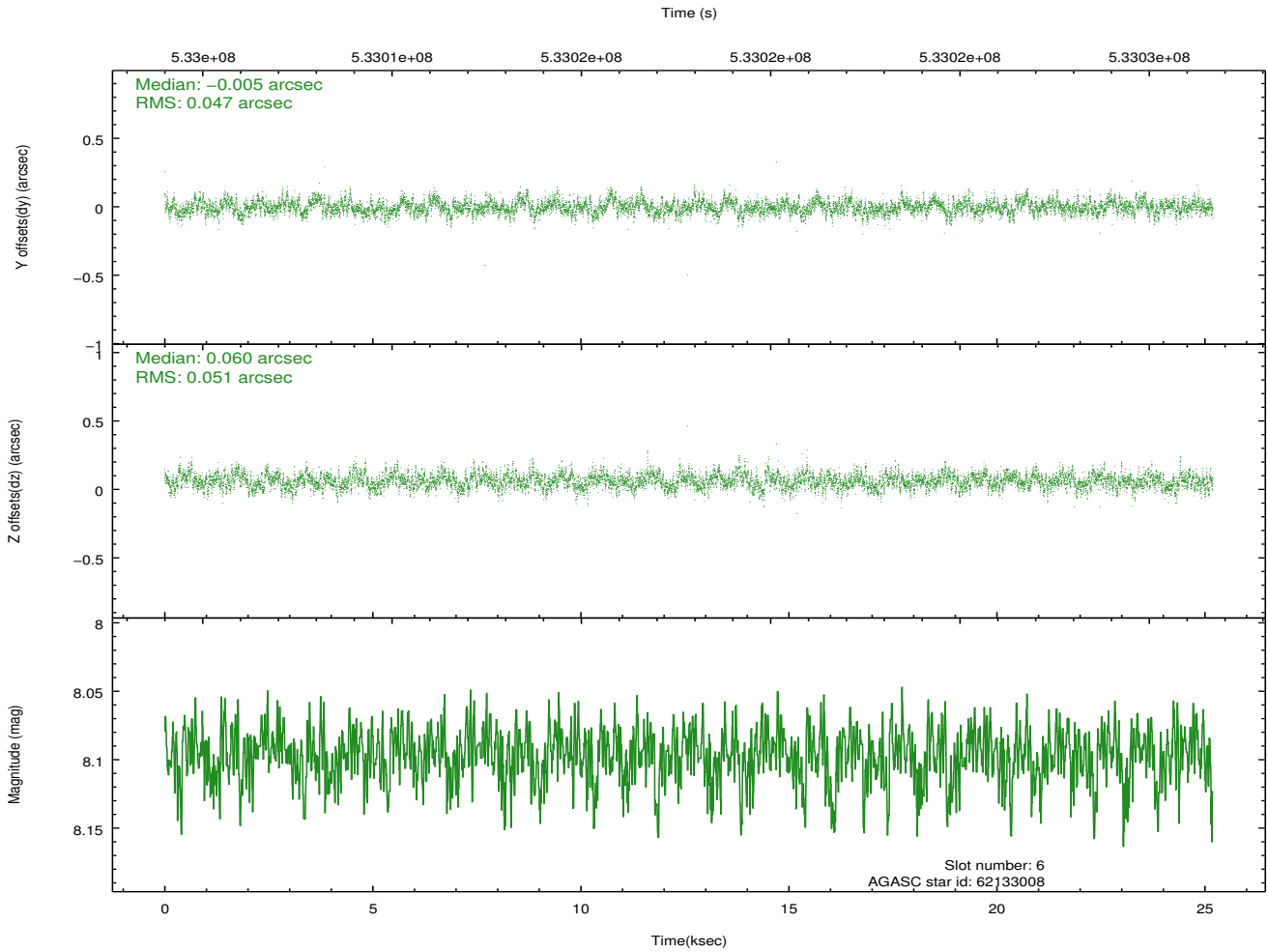
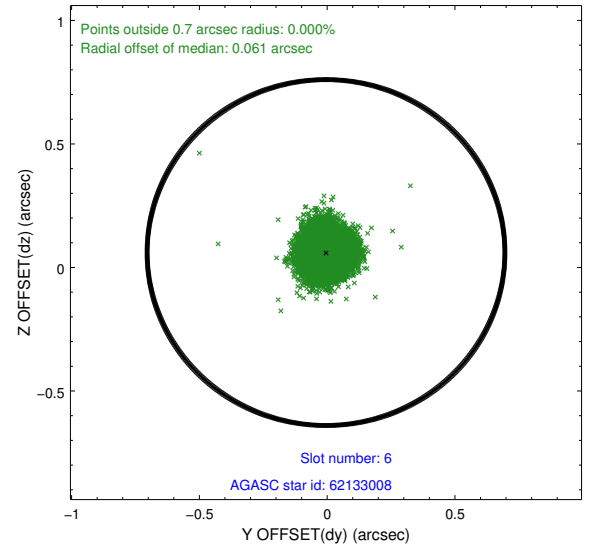
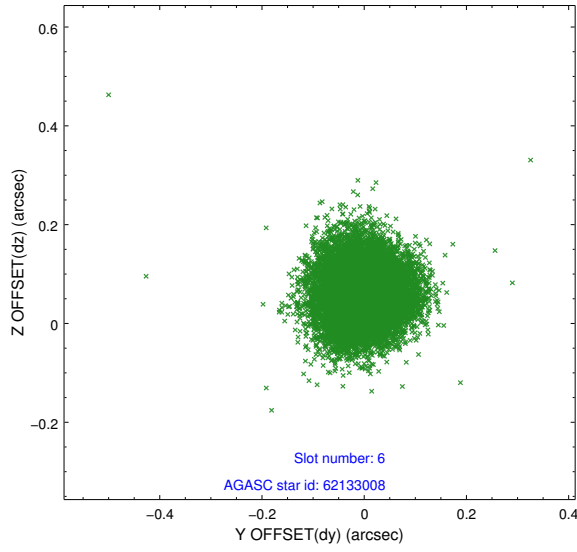




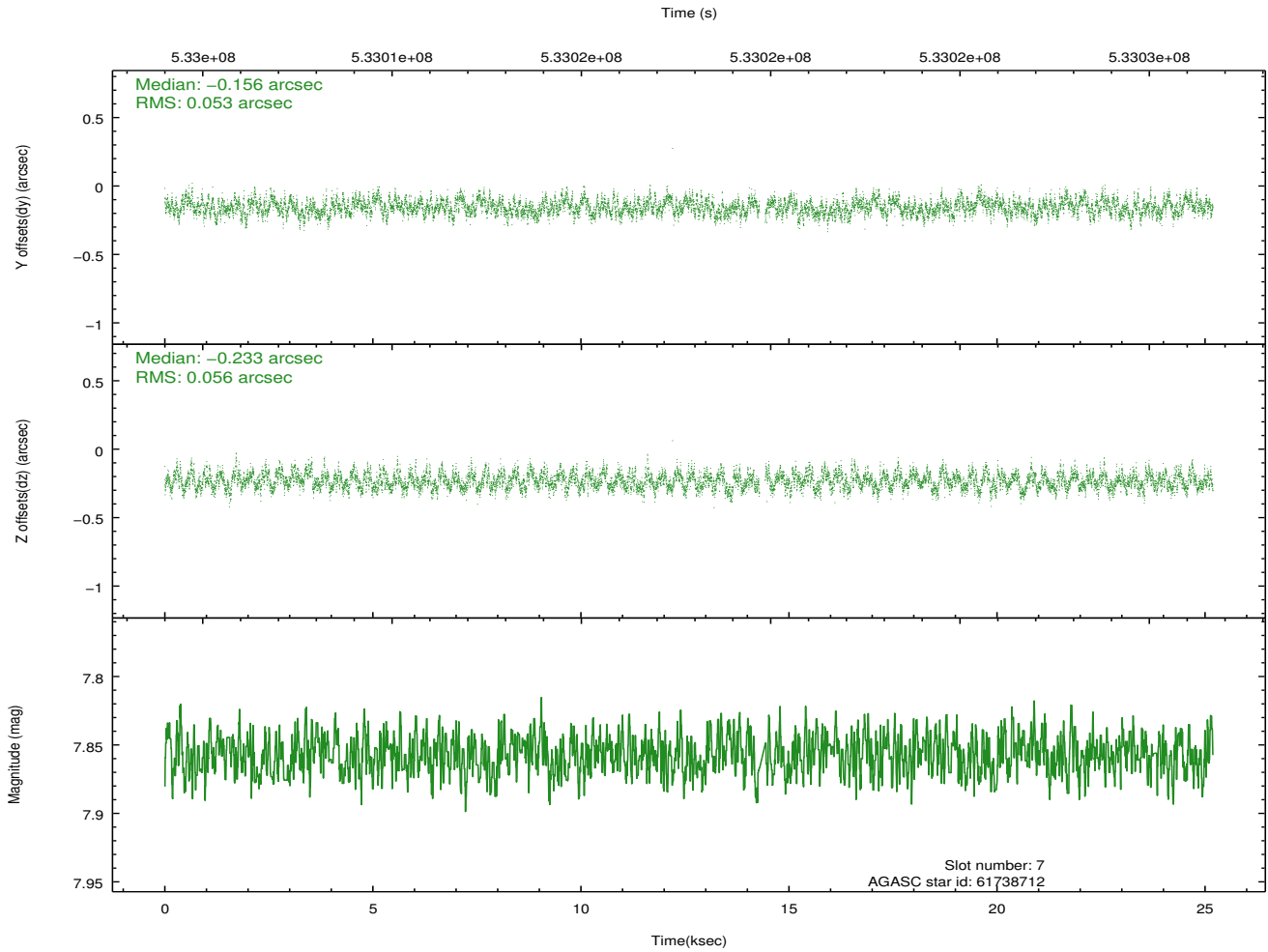
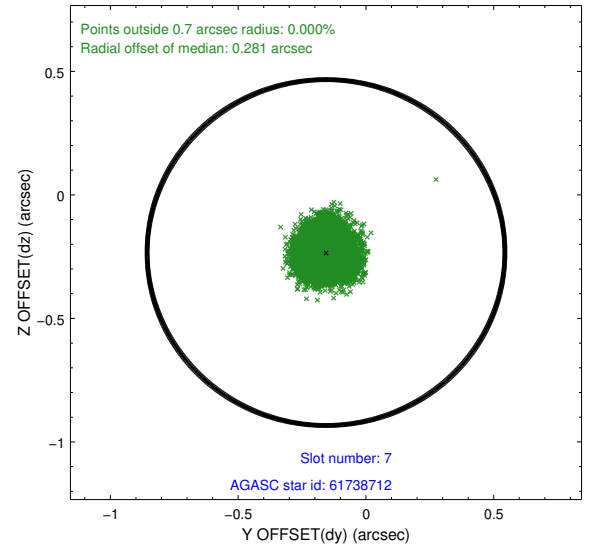
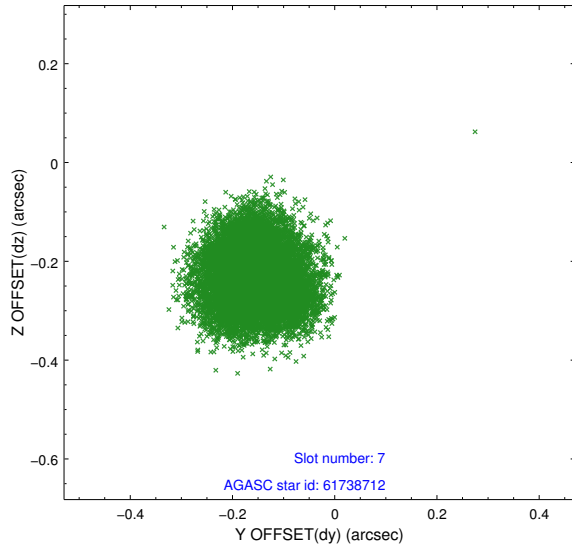
### 2.4.3 Slot 5



## 2.4.4 Slot 6

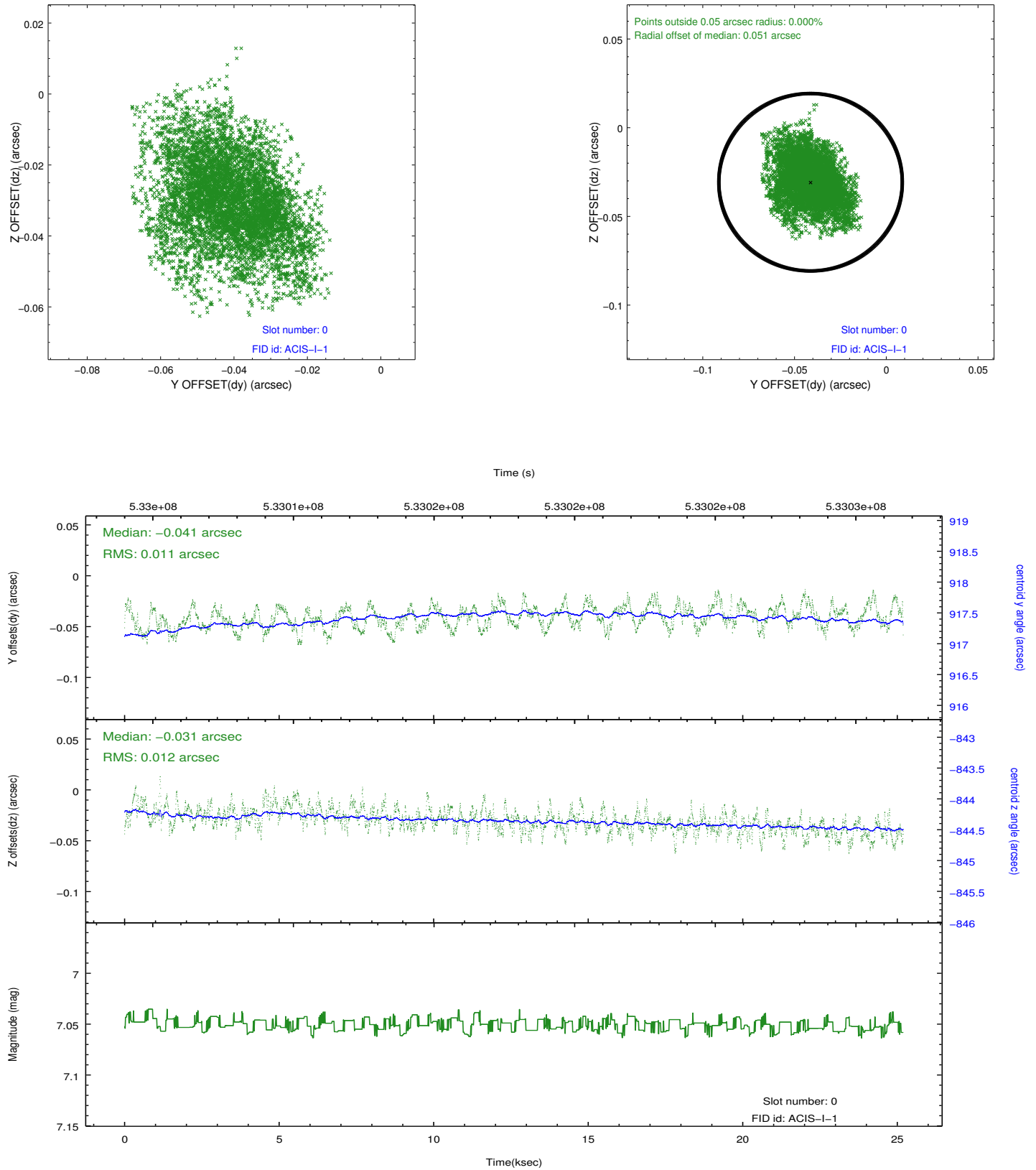


## 2.4.5 Slot 7

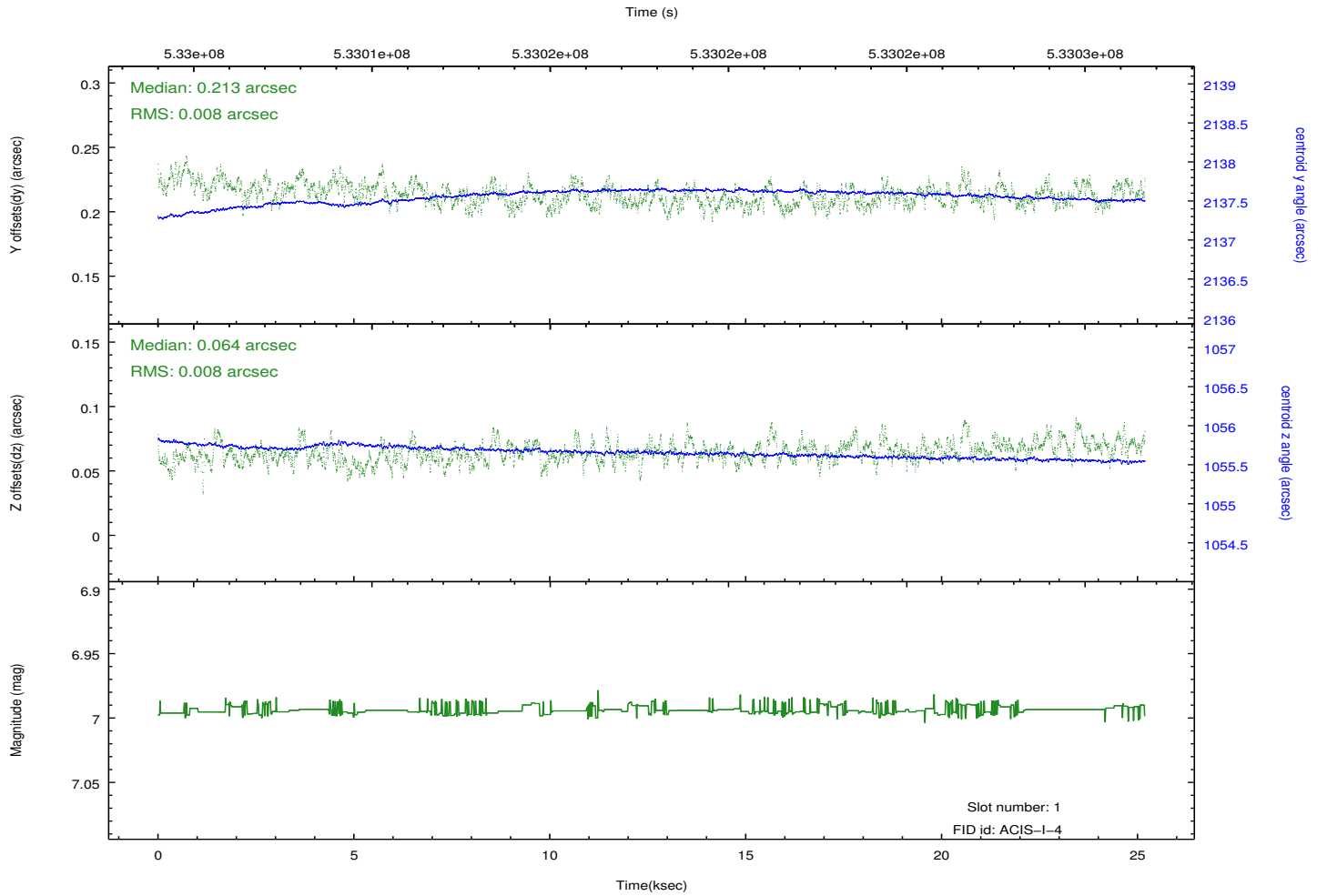
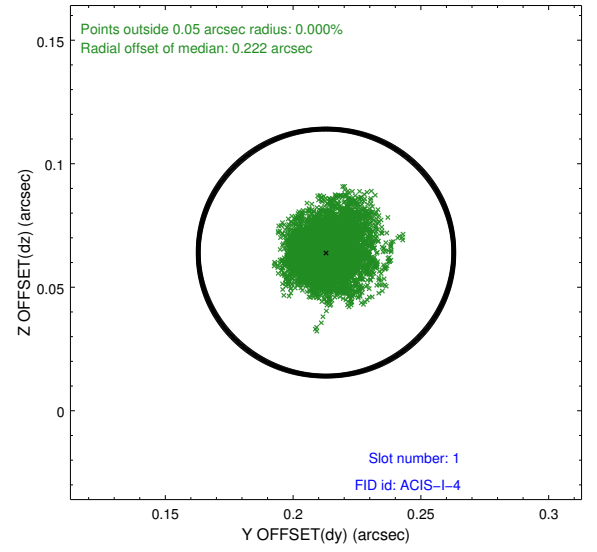
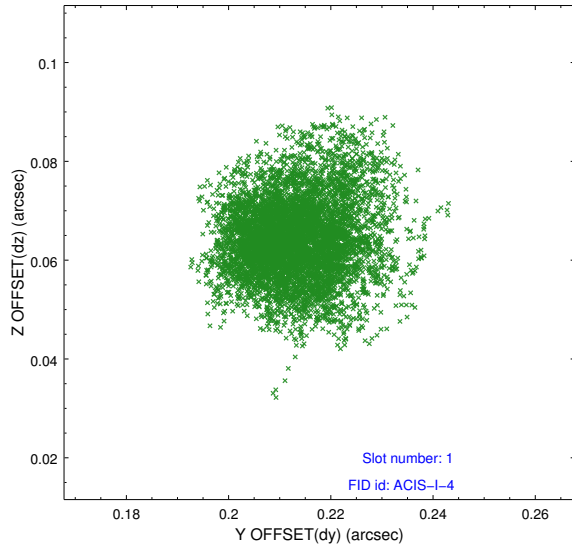


## 2.5 FID Slots

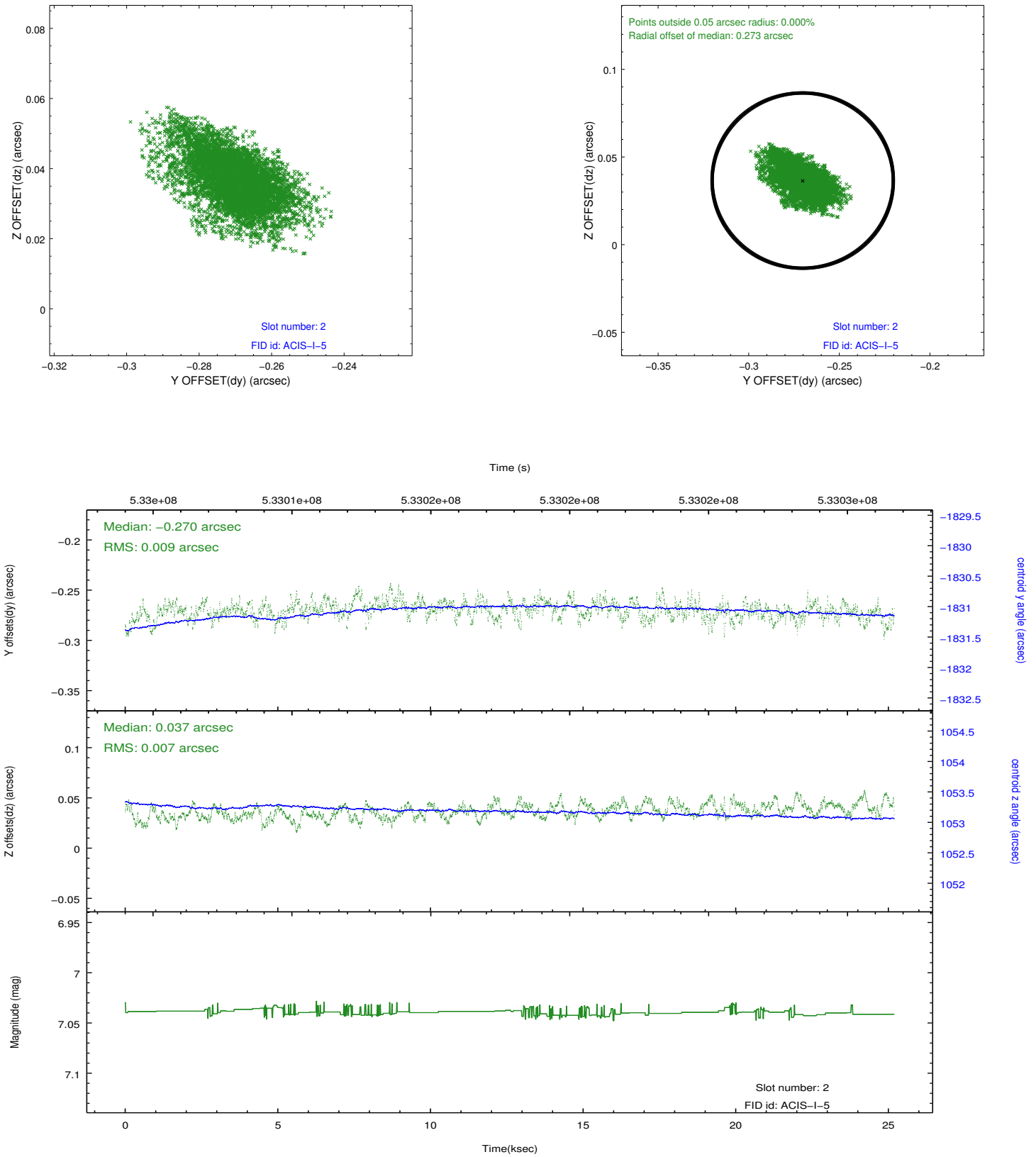
### 2.5.1 Slot 0



## 2.5.2 Slot 1



### 2.5.3 Slot 2



## A Summary

### A.1 Status

V&V Scientist	Jen Lauer
V&V Date (YYYY-MM-DD)	2014.11.24
V&V Edition	1
V&V Disposition and Status	OK
V&V Charge Time	25.087468488693

### A.2 Comments