

V&V Reference Report

L2 ASCDS Version : 10.1.1

Observation 15728 - L2 Version 2
Chandra X-Ray Center

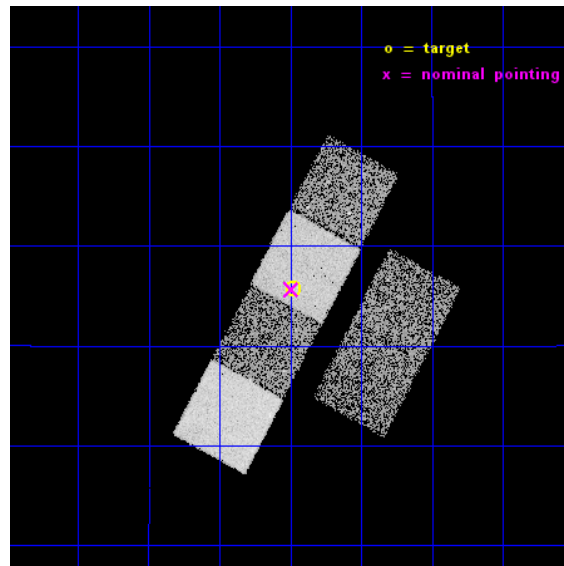
L2 Processing Date : Dec 9 2014

Contents

1	Front	2
2	OBI	3
2.1	OBI	3
2.1.1	Images	3
2.1.2	Bias	3
2.1.3	Parameters	4
2.1.4	Events	4
2.2	Compared Parameters	5
2.3	Aspect	6
2.4	Star Slots	9
2.4.1	Slot 3	9
2.4.2	Slot 4	10
2.4.3	Slot 5	11
2.4.4	Slot 6	12
2.4.5	Slot 7	13
2.5	FID Slots	14
2.5.1	Slot 0	14
2.5.2	Slot 1	15
2.5.3	Slot 2	16
A	Summary	17
A.1	Status	17
A.2	Comments	17

1 Front

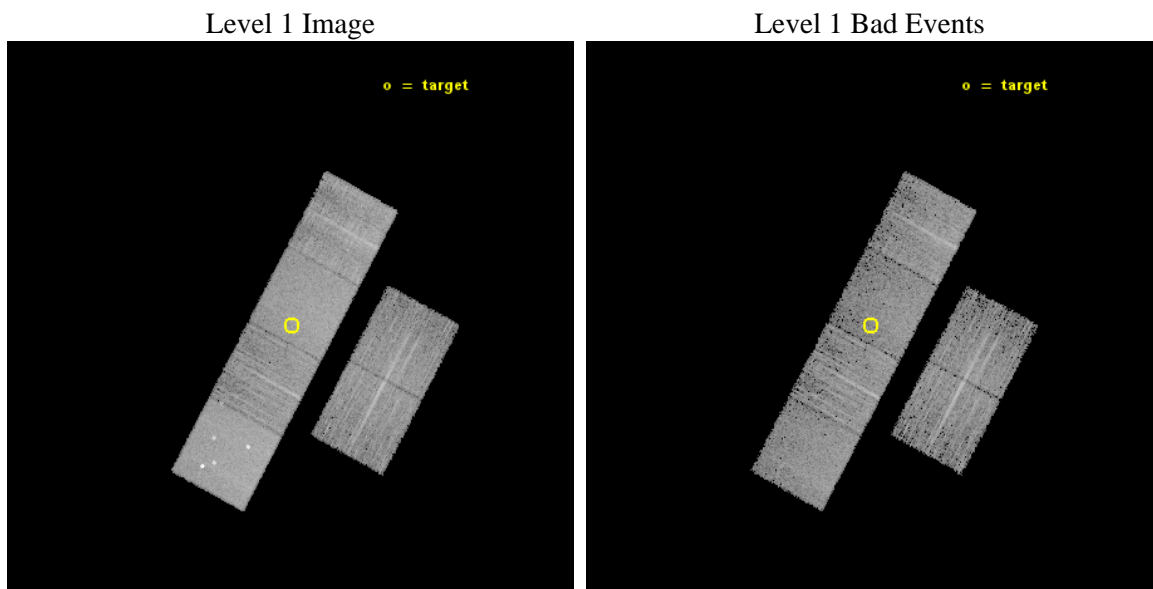
seq_num	200941	Sequence number
obs_id	15728	Observation id
title	A Snapshot Survey of the Most Active Hot Jupiter Systems.	Proposal
observer	Dr. Scott Wolk	Principal investigator
object	WASP 52	Source name
dtcycle	0	
cycle	P	events from which exps? Prim/Second/Both
ra_targ	348.495	Observer's specified target RA [deg]
dec_targ	8.761278	Observer's specified target Dec [deg]
ra_nom	348.49804145529	Nominal RA [deg]
dec_nom	8.7610172233231	Nominal Dec [deg]
roll_nom	298.20233202227	Nominal Roll [deg]
revision	2	Processing version of data
ontime	9963.8574562669	Sum of GTIs [s]
livetime	9837.689093641	Livetime [s]
ontime2	9963.8984962702	Sum of GTIs [s]
ontime3	9963.734336257	Sum of GTIs [s]
ontime5	9963.8164162636	Sum of GTIs [s]
ontime6	9963.7753762603	Sum of GTIs [s]
ontime7	9963.8574562669	Sum of GTIs [s]
ontime8	9963.6932962537	Sum of GTIs [s]
l2events	81472	Number of level 2 events



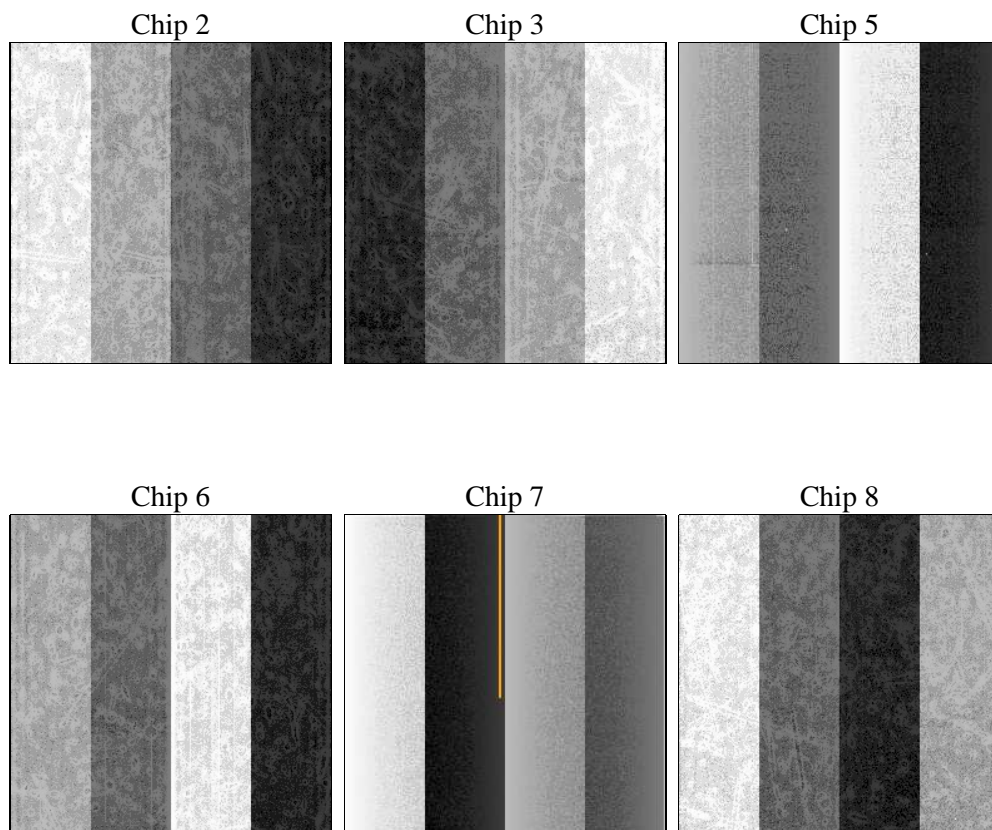
2 OBI

2.1 OBI

2.1.1 Images



2.1.2 Bias



2.1.3 Parameters

obi_num	0	Obi number	sched_exp_time	10000.000000	[s] Scheduled observation exposure time
ascdsver	10.3.1	Processing system revision	ontime	9963.8574562669	Sum of GTIs [s]
caldbver	4.6.4	 	ontime2	9963.8984962702	Sum of GTIs [s]
date	2014-12-09T08:35:00	Date and time of file creation	ontime3	9963.734336257	Sum of GTIs [s]
revision	2	Processing version of data	ontime5	9963.8164162636	Sum of GTIs [s]
			ontime6	9963.7753762603	Sum of GTIs [s]
			ontime7	9963.8574562669	Sum of GTIs [s]
			ontime8	9963.6932962537	Sum of GTIs [s]
			l1events	346343	Number of level 1 events

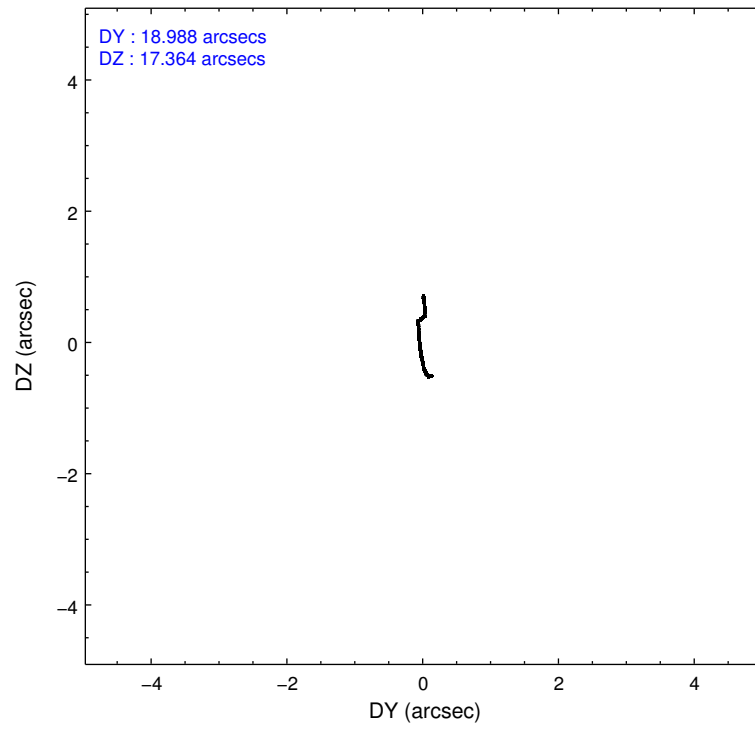
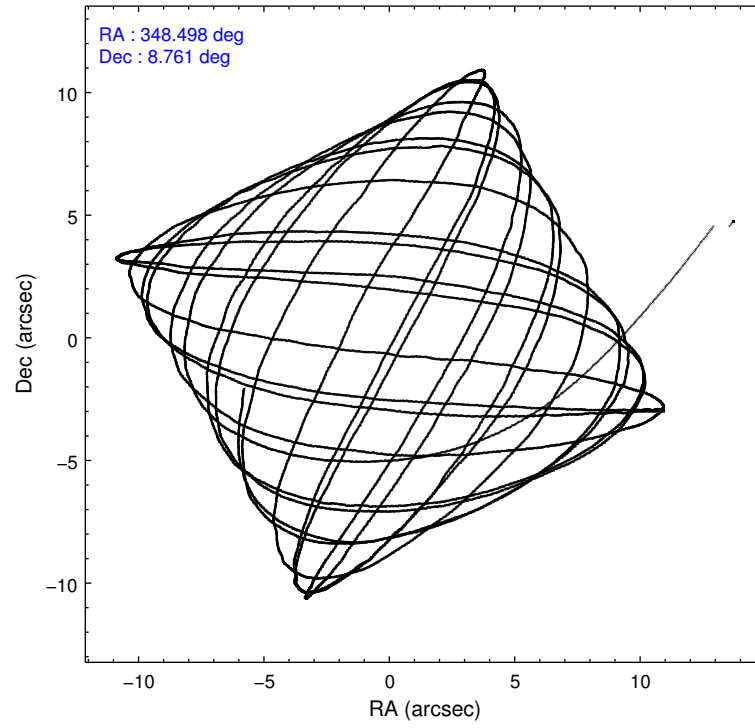
2.1.4 Events

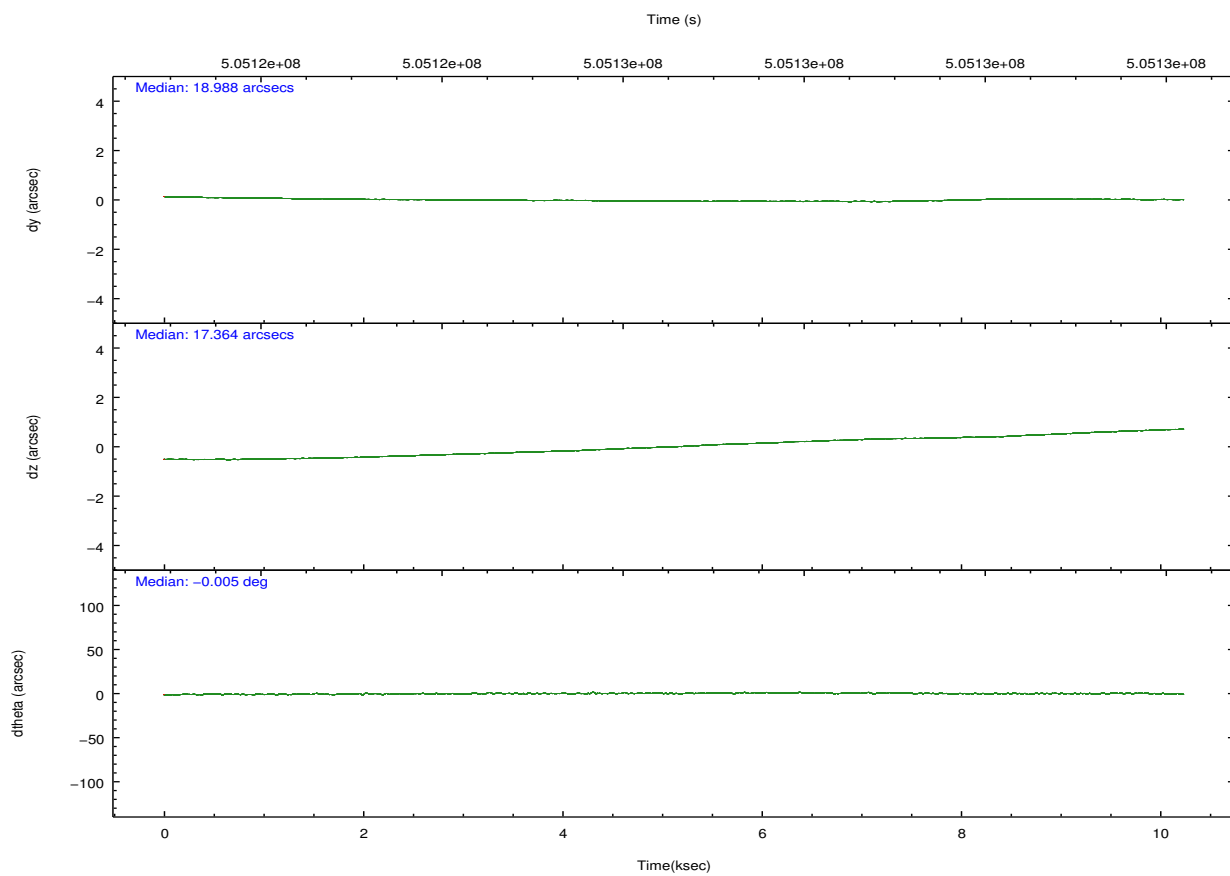
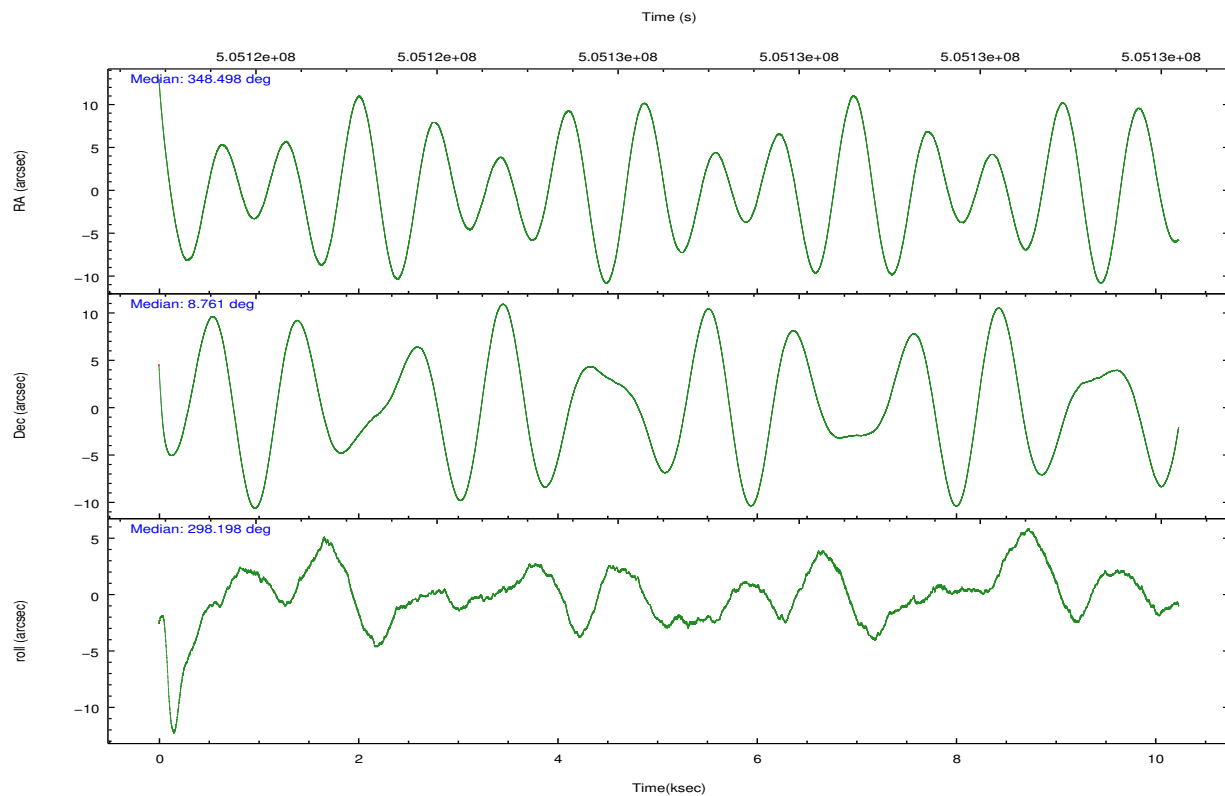
	ccd 2	ccd 3	ccd 5	ccd 6	ccd 7	ccd 8		ccd 2	ccd 3	ccd 5	ccd 6	ccd 7	ccd 8
level 1 events	46316	43140	82874	49616	63400	60997	grade 0 events	1755	1789	5800	1804	2246	4671
rejected events	41028	37931	40969	44051	36090	45100		3%	4%	6%	3%	3%	7%
rejected %	88%	87%	49%	88%	56%	73%	grade 1 events	27	29	181	24	65	53
								0%	0%	0%	0%	0%	0%
							grade 2 events	1314	1176	13022	1267	5480	3698
								2%	2%	15%	2%	8%	6%
							grade 3 events	530	553	1121	559	2188	1644
								1%	1%	1%	1%	3%	2%
							grade 4 events	546	612	1160	571	2184	1570
								1%	1%	1%	1%	3%	2%
							grade 5 events	2162	2524	5317	2349	6316	3525
								4%	5%	6%	4%	9%	5%
							grade 6 events	1148	1083	20817	1368	15230	4316
								2%	2%	25%	2%	24%	7%
							grade 7 events	38834	35374	35456	41674	29691	41520
								83%	81%	42%	83%	46%	68%

2.2 Compared Parameters

Parameter	Planned	Actual	Parameter	Planned	Actual
Instrument	ACIS	ACIS	Obspar format version number	7	7
Detector	ACIS-235678	ACIS-235678	Obspar file type	PREDICTED	ACTUAL
Grating	NONE	NONE	Obspar update status	NONE	UPDATED
Data mode	VFAINT	VFAINT	CCD I0 on	N	N
Observation mode	POINTING	POINTING	CCD I1 on	N	N
[deg] Pointing RA	348.474347	348.4980414552901	CCD I2 on	O2	Y
[deg] Pointing Dec	8.775141	8.761017223323071	CCD I3 on	O3	Y
[deg] Pointing Roll	298.049308	298.2023320222664	CCD S0 on	N	N
[mm] SIM focus pos	-0.684267	-0.6828225247311905	CCD S1 on	Y	Y
[mm] SIM defocus	0	0.001444936568705701	CCD S2 on	Y	Y
[mm] SIM translation stage pos	-190.132523	-190.1400660498719	CCD S3 on	Y	Y
[mm] SIM translation stage offset	0	0.00754346686406393	CCD S4 on	O1	Y
[s] Observation start time (MET)	505121670.184000	505120535.47993	CCD S5 on	N	N
Observation start date	2014-01-03T07:33:23	2014-01-03T07:15:35	Number of optional ACIS chips dropped	0	0
[s] Observation end time (MET)	505131670.184000	505132853.41811	On-chip summing requested	N	N
Observation end date	2014-01-03T10:20:03	2014-01-03T10:40:53	Subarray requested	NONE	NONE
Read mode	TIMED	TIMED	Alternating exposures requested	N	N
			[s] Primary exposure time	0.000000	3.2

2.3 Aspect



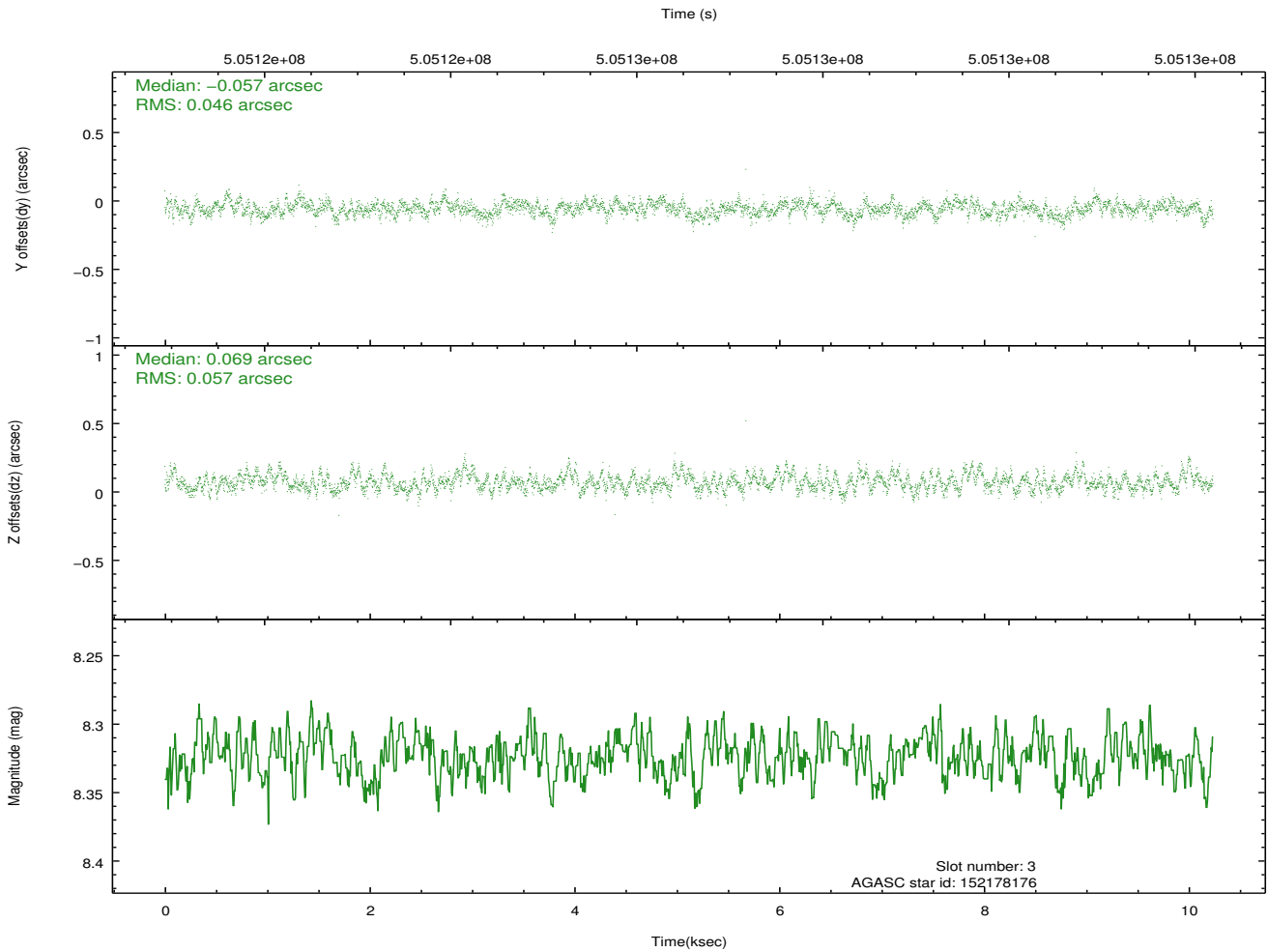
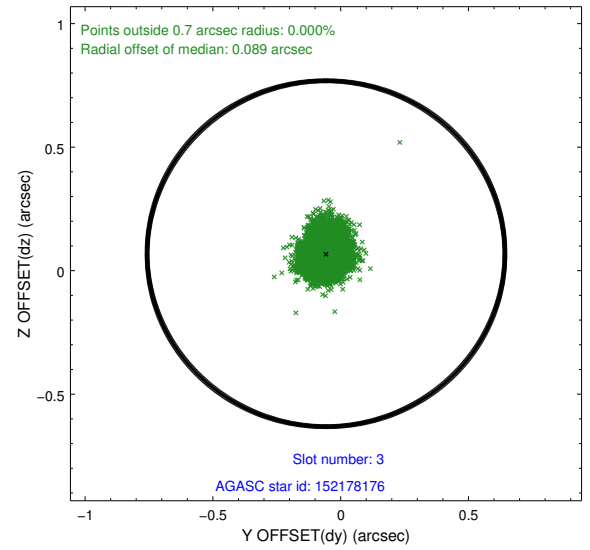
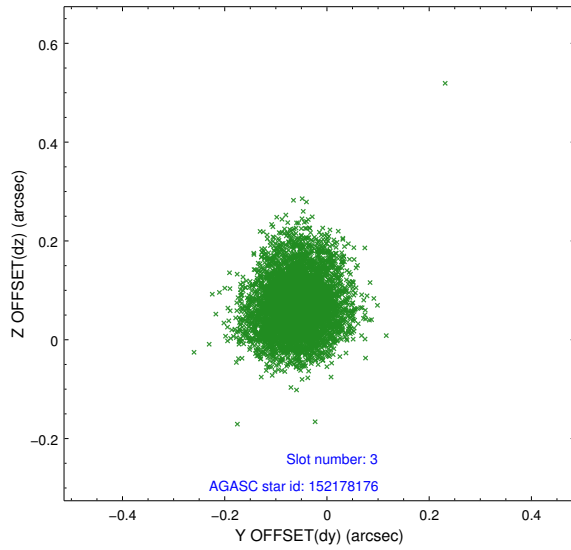


Slot Statistics

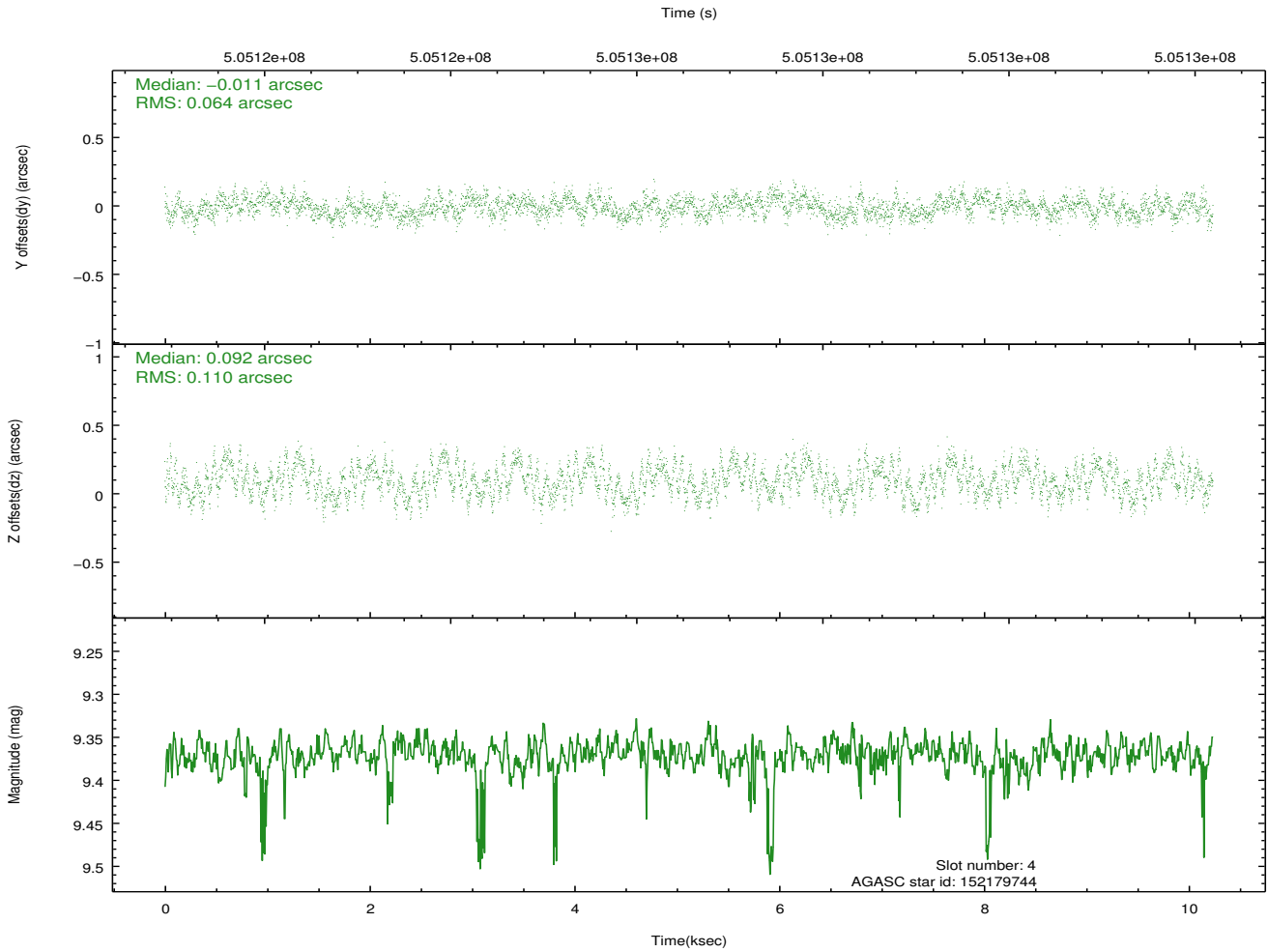
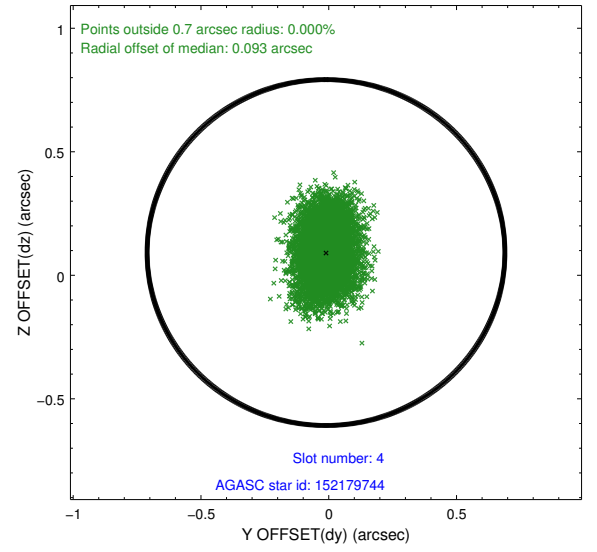
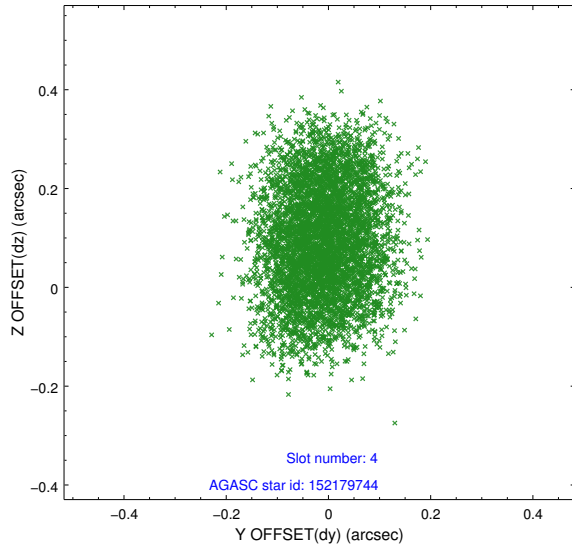
slot	status	used	id	mag	n_pts	med_dy	med_dz	dr1	dr2	ra	dec	mean_y	mean_z
0	FID		ACIS-S-1	7.16	2497	0.065	-0.036	0.022	0.030	0.000000	0.000000	924.01	-1734.50
1	FID		ACIS-S-4	7.17	2497	0.200	-0.003	0.016	0.024	0.000000	0.000000	2141.85	169.15
2	FID		ACIS-S-5	7.20	2497	-0.292	0.051	0.008	0.015	0.000000	0.000000	-1824.54	163.41
3	GUIDE	used	152178176	8.32	4993	-0.057	0.069	0.078	0.124	348.090571	9.029273	-1448.94	-773.74
4	GUIDE	used	152179744	9.37	4989	-0.011	0.092	0.138	0.217	347.686109	8.938786	-1840.18	-2195.24
5	GUIDE	used	152181664	8.59	4992	-0.215	-0.093	0.081	0.126	348.774873	8.789488	456.63	968.88
6	GUIDE	used	152182808	9.31	4991	0.098	-0.000	0.132	0.214	347.960321	8.802005	-945.67	-1567.53
7	GUIDE	used	152188480	8.92	4988	0.190	-0.072	0.090	0.152	348.517103	8.131940	2115.61	-954.55

2.4 Star Slots

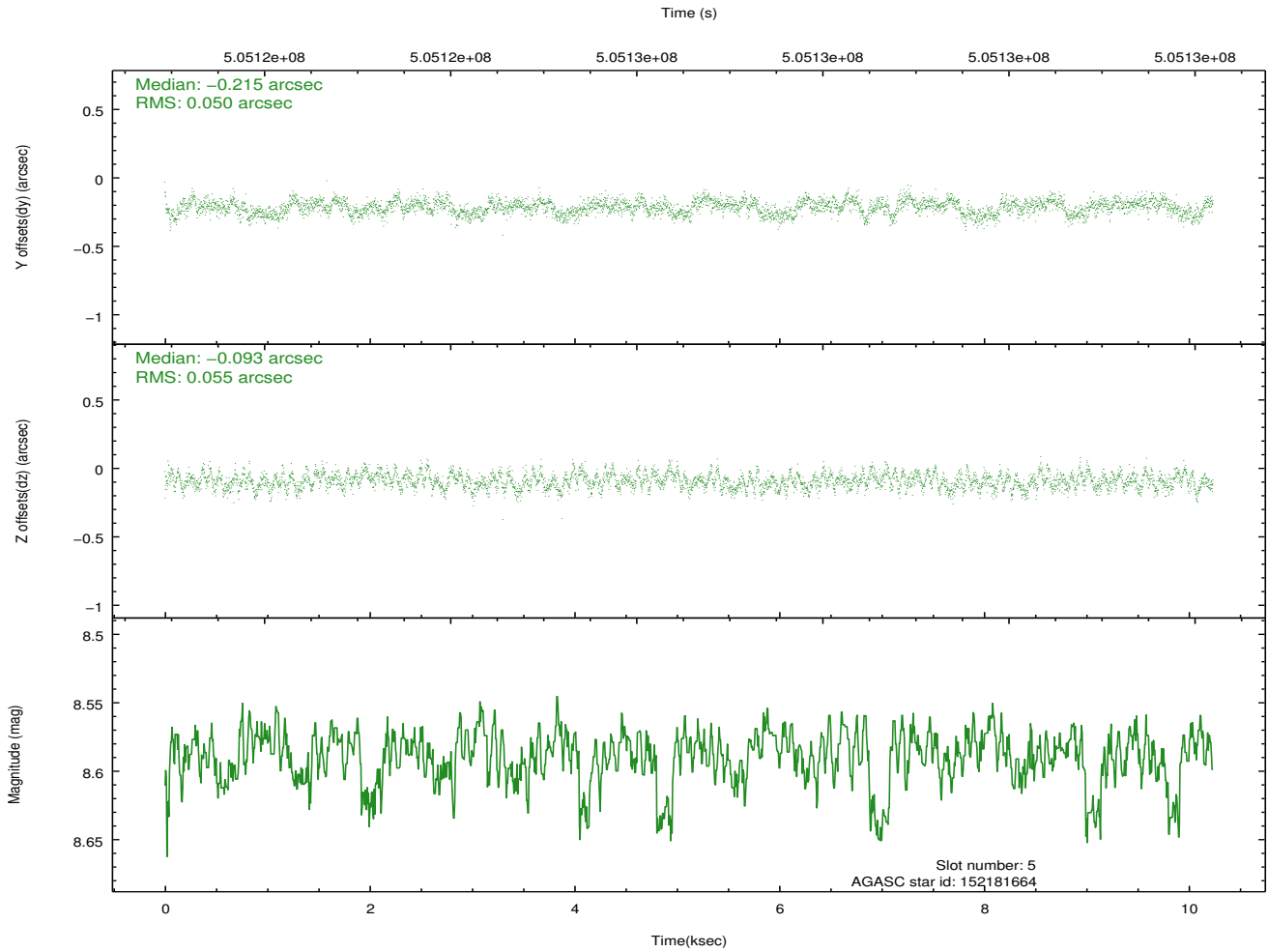
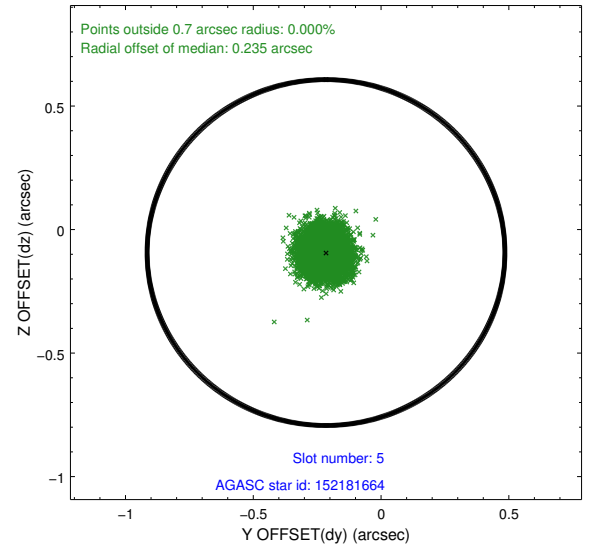
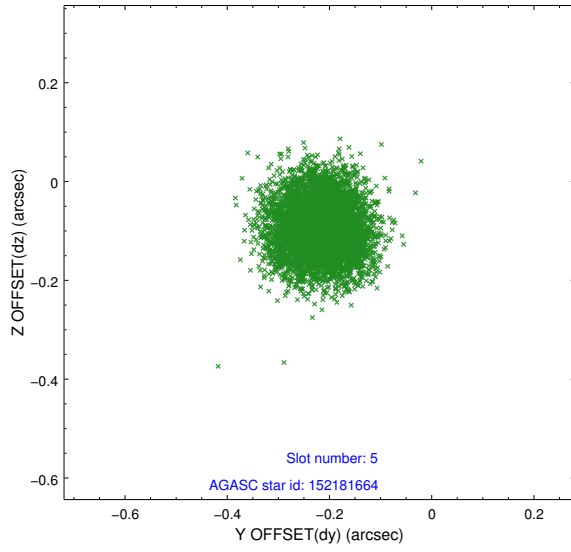
2.4.1 Slot 3



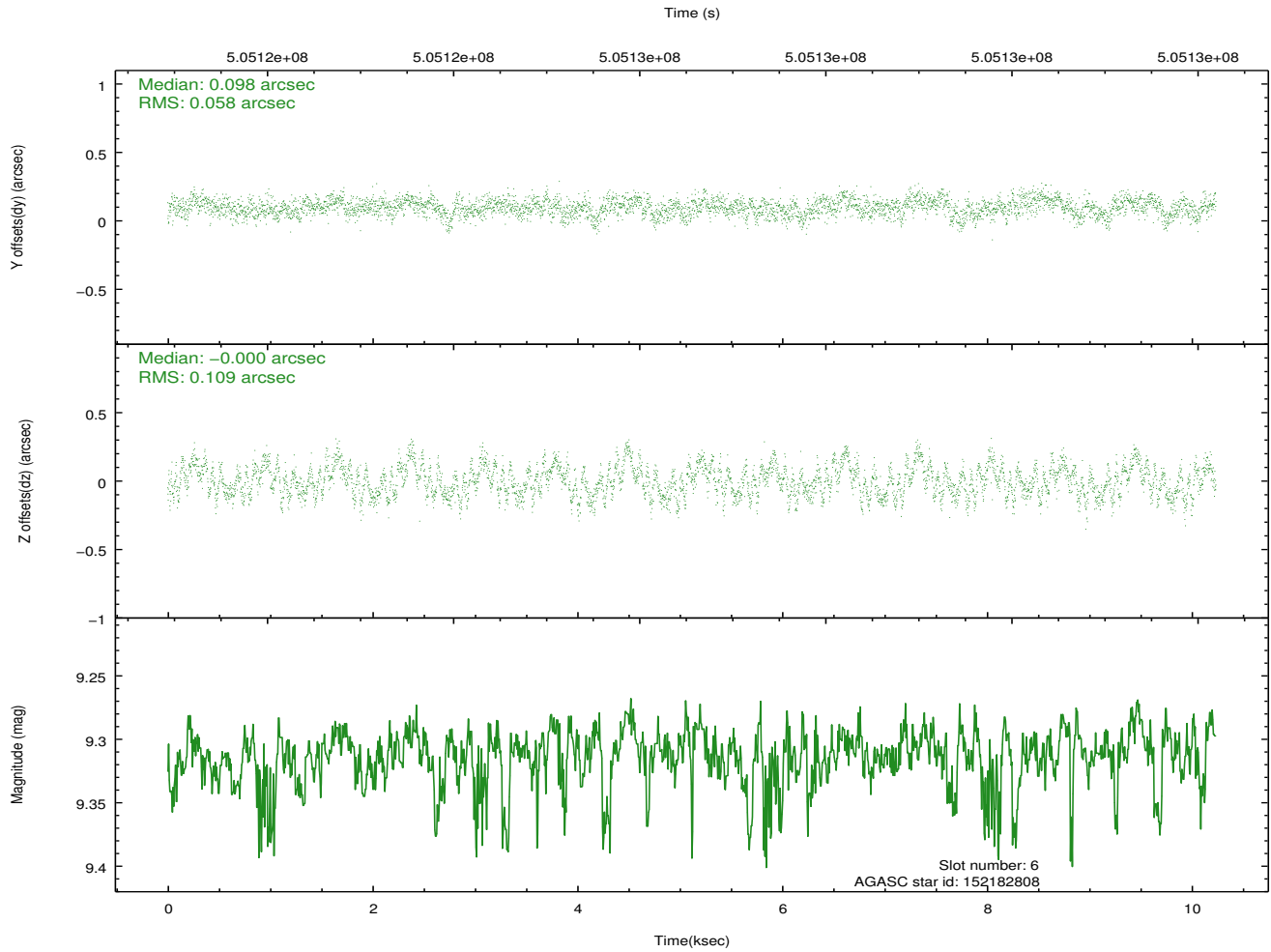
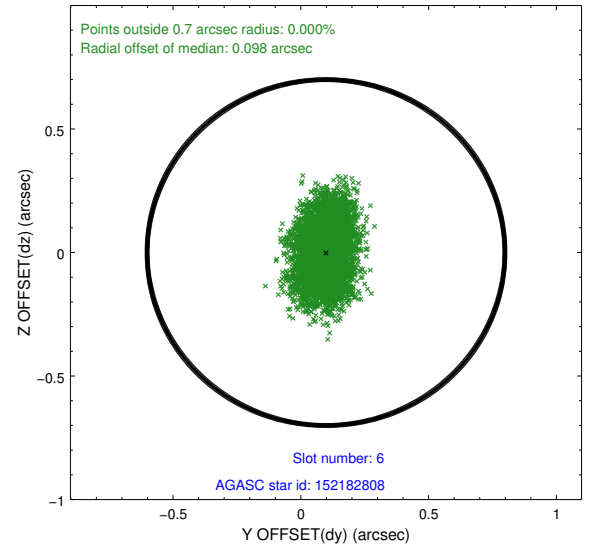
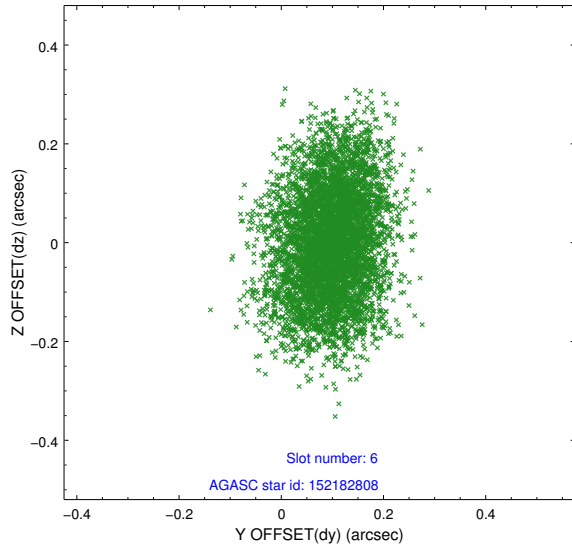
2.4.2 Slot 4



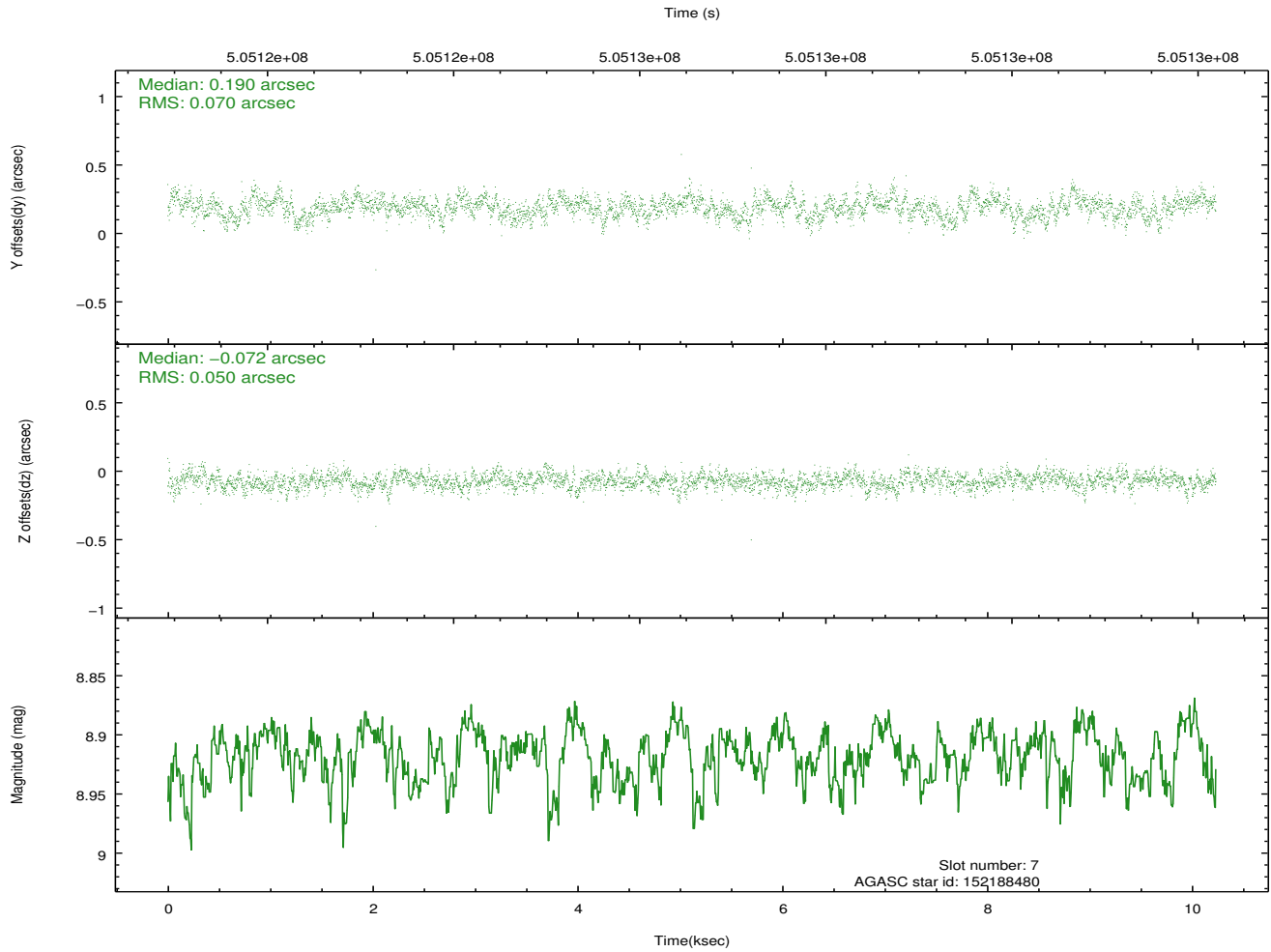
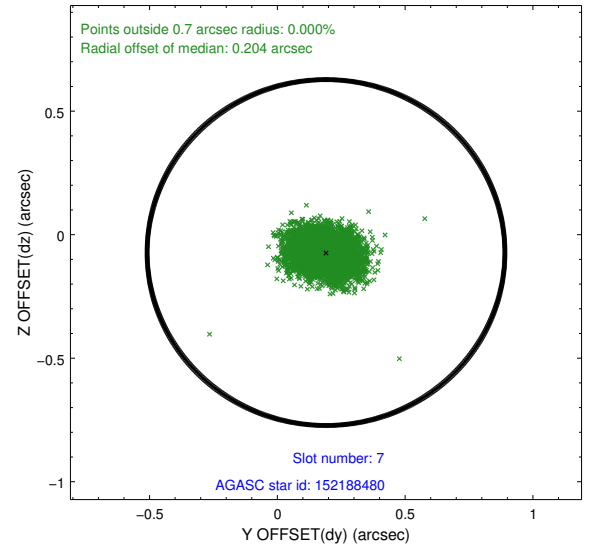
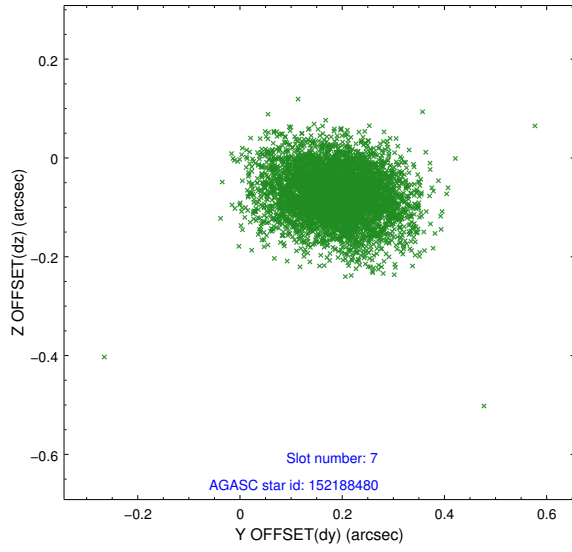
2.4.3 Slot 5



2.4.4 Slot 6

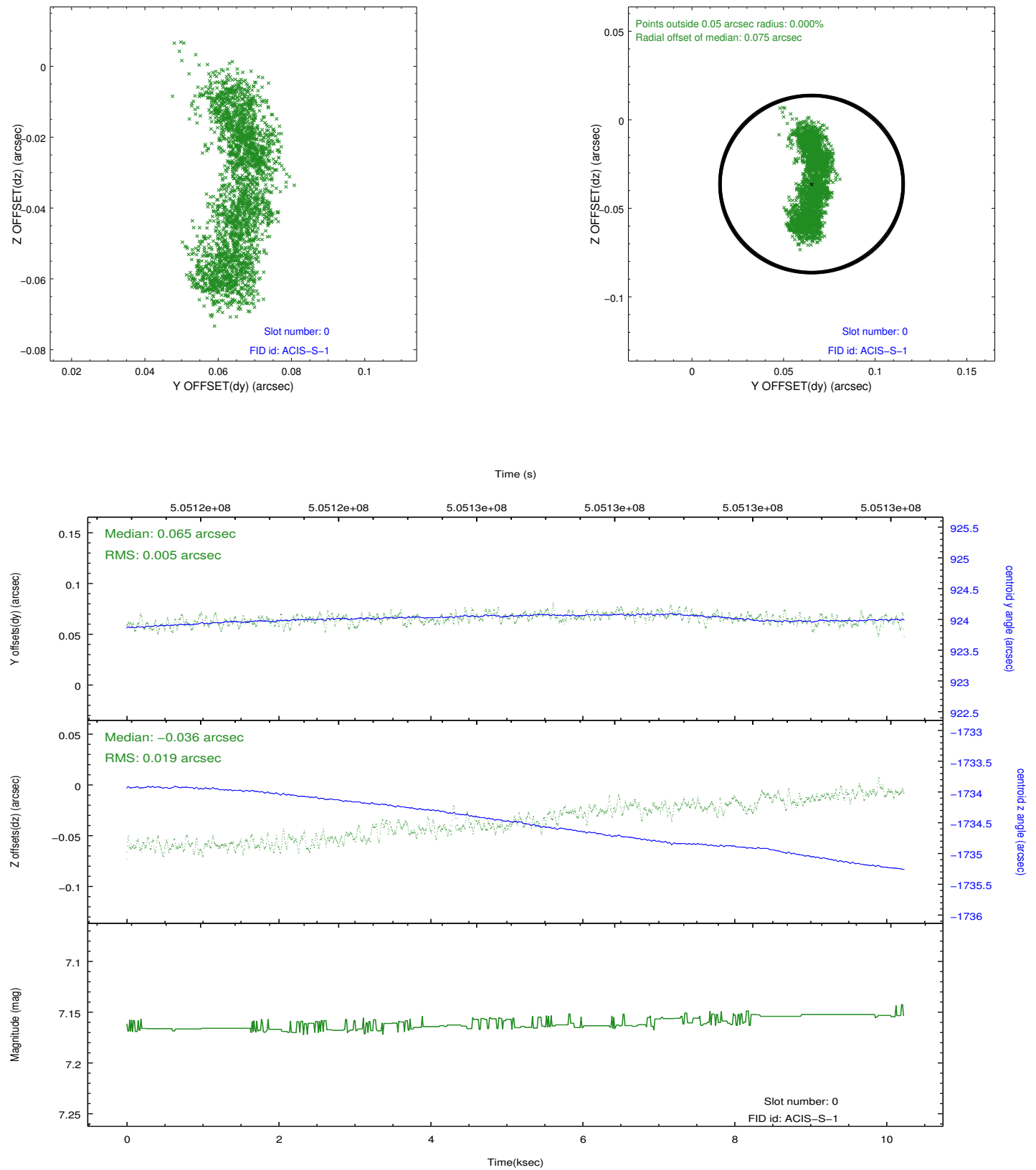


2.4.5 Slot 7

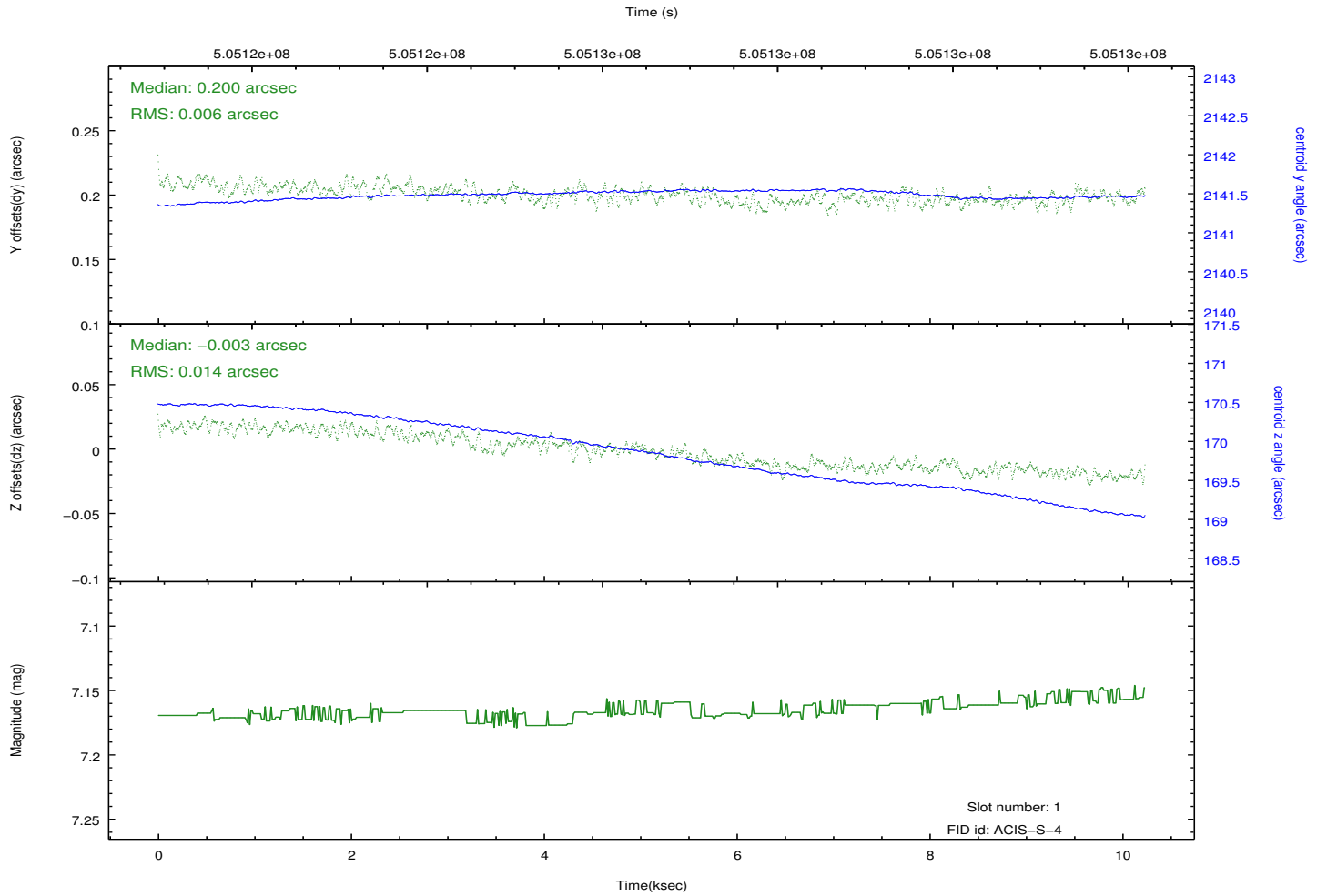
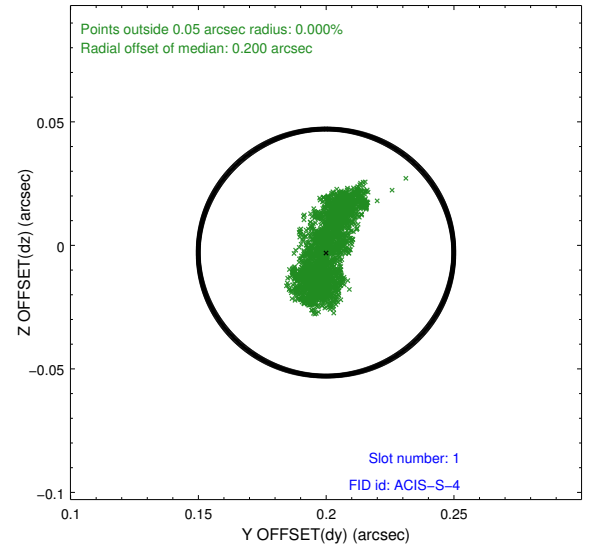
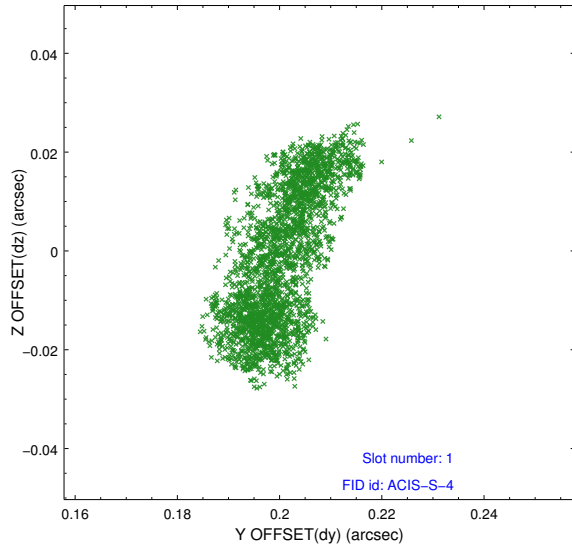


2.5 FID Slots

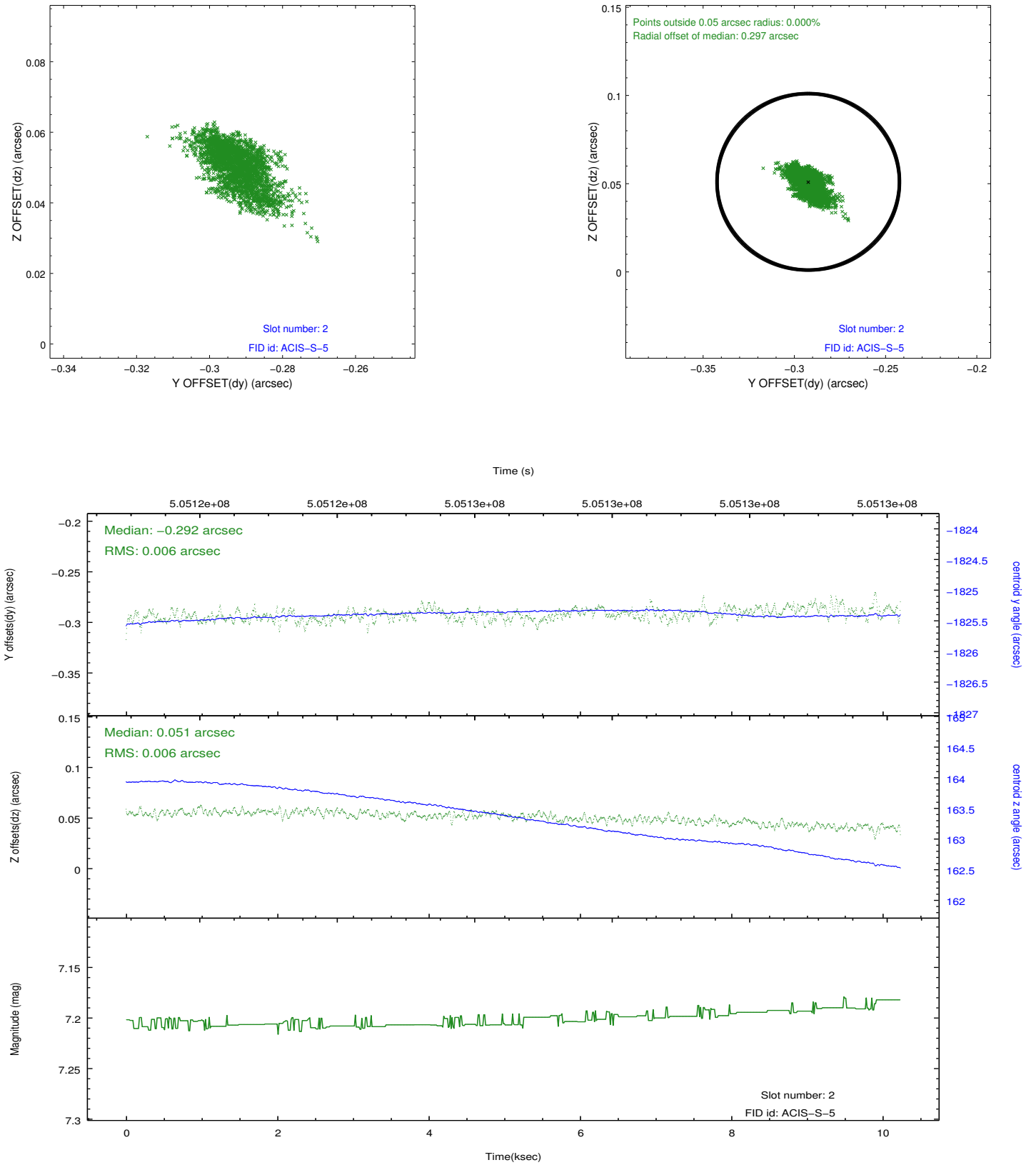
2.5.1 Slot 0



2.5.2 Slot 1



2.5.3 Slot 2



A Summary

A.1 Status

V&V Scientist	Beth Sundheim
V&V Date (YYYY-MM-DD)	2014.12.16
V&V Edition	1
V&V Disposition and Status	OK
V&V Charge Time	9.9638574562669

A.2 Comments

These data have been reprocessed with new aspect alignment calibration files that correct small mean offsets (up to 0.4 arcsecs) and improve overall astrometric accuracy. The new calibration was determined using data from the time period being reprocessed and was performed using cross-correlation of X-ray sources with radio and optical counterparts.