

# V&V Reference Report

## L2 ASCDS Version : 7.6.9

Observation 1538 - L2 Version 001  
Chandra X-Ray Center

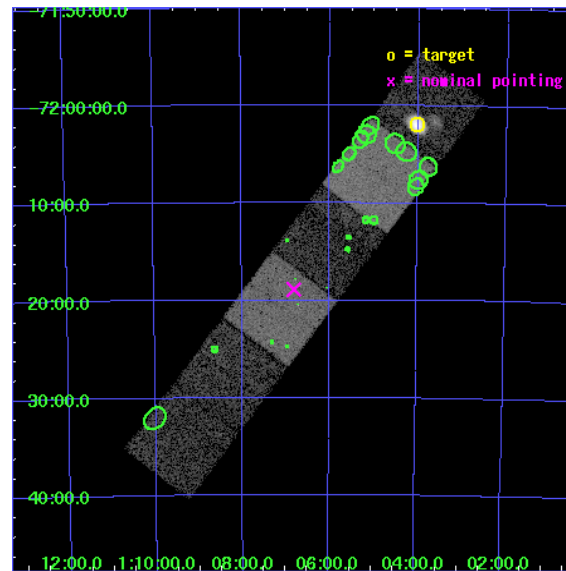
L2 Processing Date : Nov 25 2006

## Contents

<b>1</b>	<b>Front</b>	<b>2</b>
<b>2</b>	<b>OBI</b>	<b>3</b>
2.1	OBI . . . . .	3
2.1.1	Images . . . . .	3
2.1.2	Bias . . . . .	3
2.1.3	Parameters . . . . .	4
2.1.4	Events . . . . .	4
2.2	Compared Parameters . . . . .	5
2.3	Aspect . . . . .	6
2.4	Star Slots . . . . .	9
2.4.1	Slot 3 . . . . .	9
2.4.2	Slot 4 . . . . .	10
2.4.3	Slot 5 . . . . .	11
2.4.4	Slot 6 . . . . .	12
2.4.5	Slot 7 . . . . .	13
2.5	FID Slots . . . . .	14
2.5.1	Slot 0 . . . . .	14
2.5.2	Slot 1 . . . . .	15
2.5.3	Slot 2 . . . . .	16
<b>3</b>	<b>Point Sources</b>	<b>17</b>
<b>A</b>	<b>Summary</b>	<b>18</b>
A.1	Status . . . . .	18
A.2	Comments . . . . .	18

# 1 Front

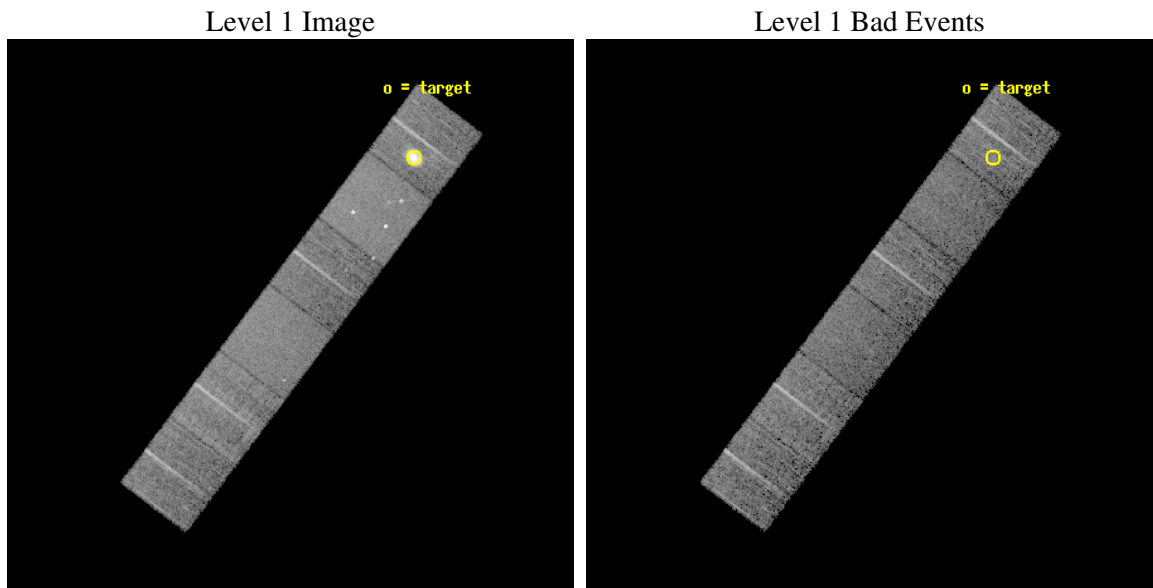
seq_num	590147
obs_id	1538
title	ACIS CALIBRATION OBSERVATION OF THE SUPERNOVA REMNANT E0102-72 (JUNE 2001)
observer	Dr. CXC Calibration
object	E0102-72.3 [Chip S0, T=120, Offsets=21,0,0]
dtcycle	0
cycle	P
ra_targ	16.01
dec_targ	-72.032028
ra_nom	16.701505687553
dec_nom	-72.314793615413
roll_nom	127.02831852813
revision	2
ontime	7705.6000071764
livetime	7608.0270601302
ontime4	7705.6000071764
ontime5	7705.6000071764
ontime6	7705.6000071764
ontime7	7705.6000071764
ontime8	7705.6000071764
ontime9	7705.6000071764
l2events	95460



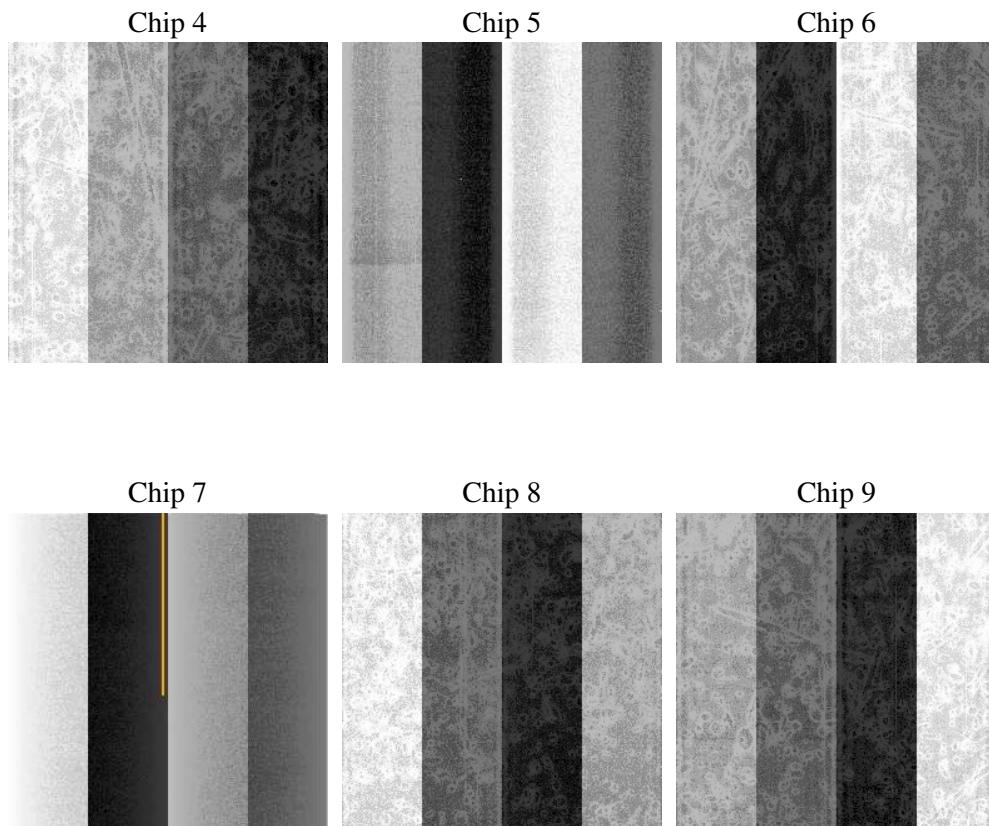
## 2 OBI

### 2.1 OBI

#### 2.1.1 Images



#### 2.1.2 Bias



### 2.1.3 Parameters

obi_num	0
ascdsver	7.6.9
caldsver	3.2.4
date	2006-11-25T08:26:48
revision	2

sched_exp_time	7755.000000
ontime	7710.3363305181
ontime4	7710.3363305181
ontime5	7710.3363305181
ontime6	7710.3363305181
ontime7	7710.3363305181
ontime8	7710.3363305181
ontime9	7710.3363305181
l1events	384066

### 2.1.4 Events

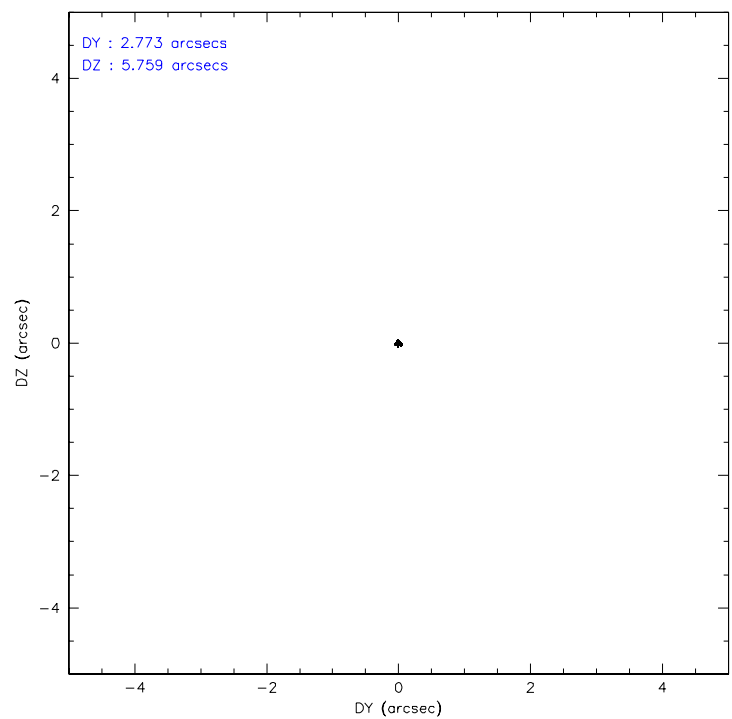
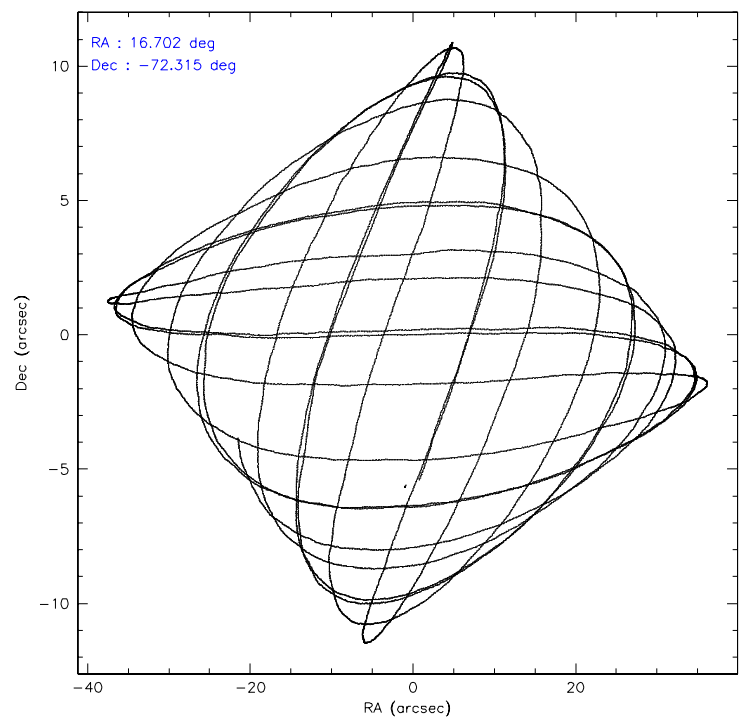
	ccd 4	ccd 5	ccd 6	ccd 7	ccd 8	ccd 9
level 1 events	76636	75022	50532	64050	66540	51286
rejected events	49981	39685	44259	39189	51800	45134
rejected %	65%	52%	87%	61%	77%	88%

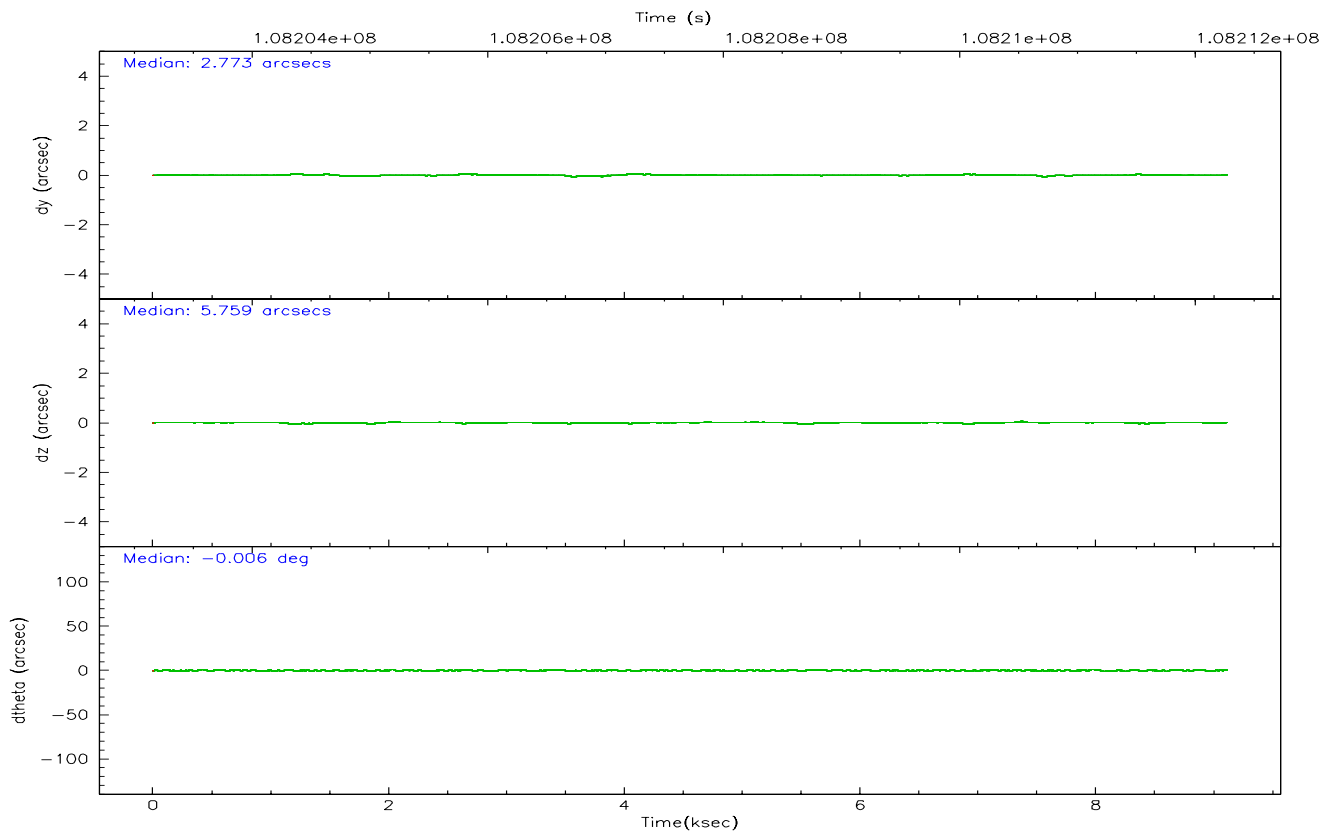
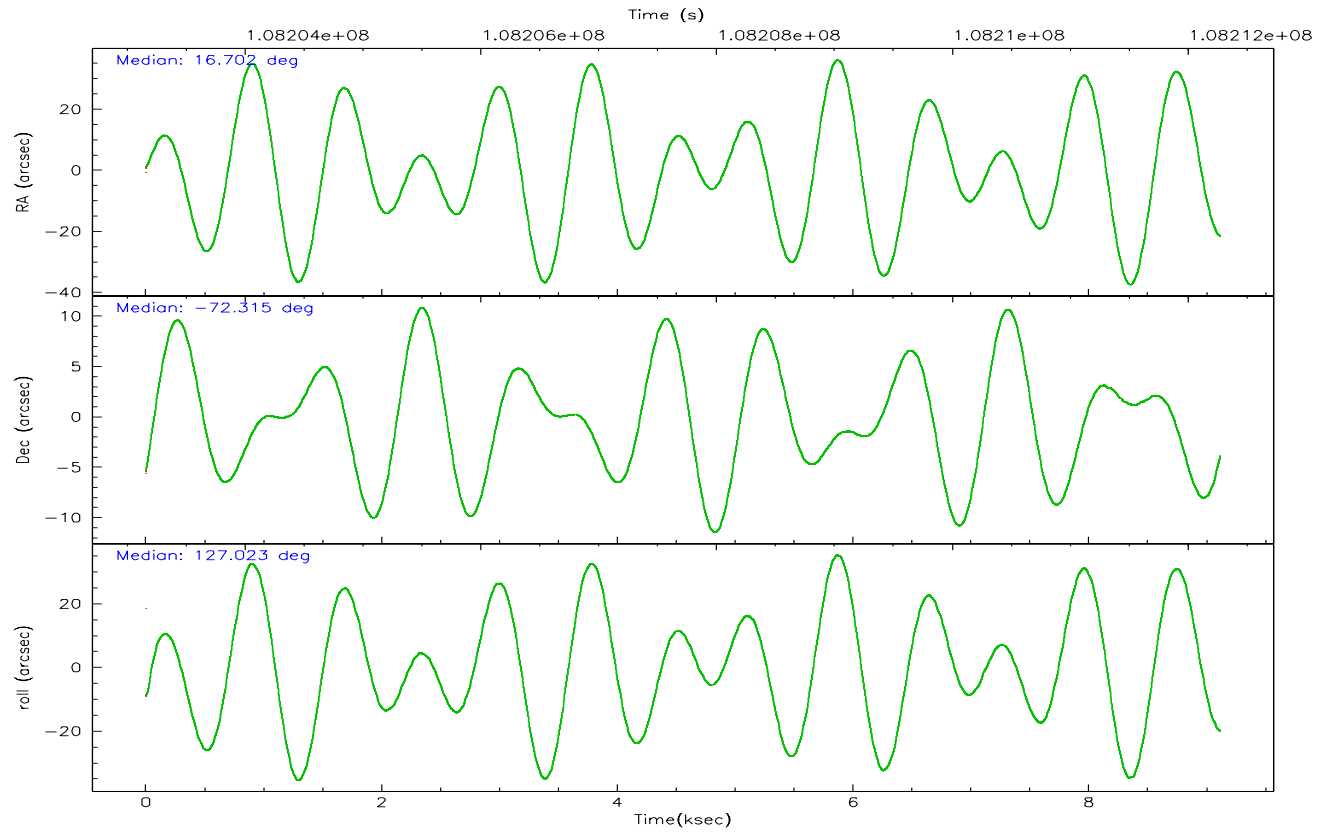
	ccd 4	ccd 5	ccd 6	ccd 7	ccd 8	ccd 9
grade 0 events	20961	6070	2716	1698	4845	2544
	27%	8%	5%	2%	7%	4%
grade 1 events	111	83	28	35	40	30
	0%	0%	0%	0%	0%	0%
grade 2 events	2908	9850	1206	6065	3145	1232
	3%	13%	2%	9%	4%	2%
grade 3 events	820	850	573	1400	1604	577
	1%	1%	1%	2%	2%	1%
grade 4 events	839	772	585	1310	1488	569
	1%	1%	1%	2%	2%	1%
grade 5 events	1780	3408	2158	4368	2762	2096
	2%	4%	4%	6%	4%	4%
grade 6 events	1148	17827	1197	14411	3662	1236
	1%	23%	2%	22%	5%	2%
grade 7 events	48069	36162	42069	34763	48994	43002
	62%	48%	83%	54%	73%	83%

## 2.2 Compared Parameters

Parameter	Planned	Actual	Parameter	Planned	Actual
Instrument	ACIS	ACIS	Obspar format version number	6	6
Detector	ACIS-456789	ACIS-456789	Obspar file type	PREDICTED	ACTUAL
Grating	NONE	NONE	Obspar update status	NONE	UPDATED
Data mode	FAINT	FAINT	Number of optional ACIS chips dropped	0	0
Observation mode	POINTING	POINTING	On-chip summing requested	N	N
Pointing RA	16.784587	16.70150568755319	Subarray requested	NONE	NONE
Pointing Dec	-72.325164	-72.31479361541304	Alternating exposures requested	N	N
Pointing Roll	126.950849	127.0283185281335	Primary exposure time	0.000000	3.2
Window start time	107740864.184000	107740864.184000			
Window stop time	110246464.184000	110246464.184000			
SIM focus pos (mm)	-0.684267	-0.6828225247311905			
SIM defocus (mm)	0	0.001444936568705701			
SIM translation stage pos (mm)	-190.132523	-190.1425803651734			
SIM translation stage offset (mm)	0	0.01005778216563158			
Observation start time	108204521.184000	108202974.64861			
Observation start date	2001-06-06T08:47:37	2001-06-06T08:22:54			
Observation end time	108212276.184000	108212409.77398			
Observation end date	2001-06-06T10:56:52	2001-06-06T11:00:09			
Read mode	TIMED	TIMED			

## 2.3 Aspect





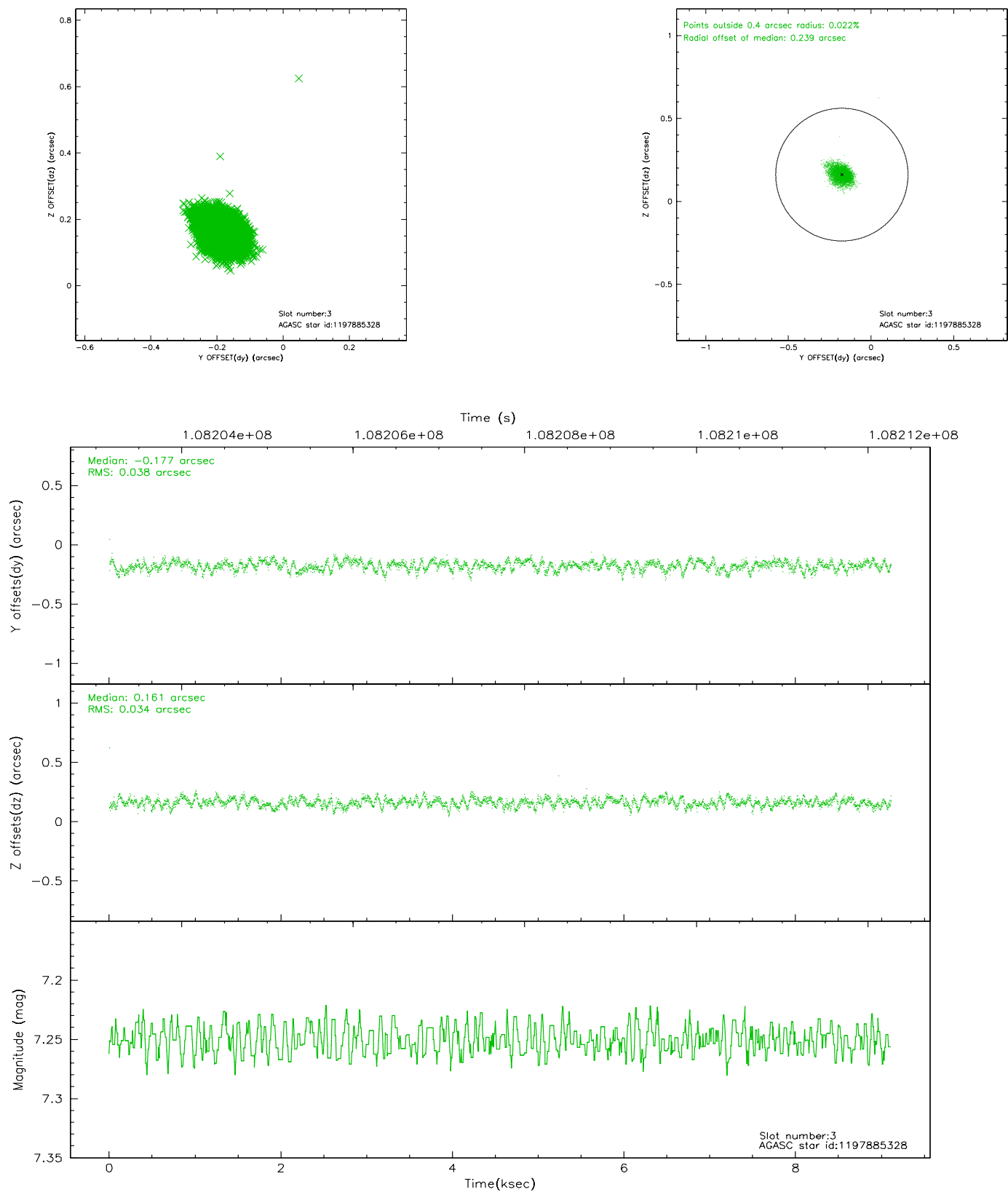
### Slot Statistics

slot	status	id	mag	n_pts	med_dy	med_dz	dr1	dr2	ra	dec	mean_y	mean_z
0	FID	ACIS-S-2	7.11	2223	-0.012	0.035	0.006	0.010	0.000000	0.000000	-755.37	-1726.82
1	FID	ACIS-S-4	7.20	2223	-0.091	-0.004	0.005	0.009	0.000000	0.000000	2157.50	181.08
2	FID	ACIS-S-5	7.24	2223	0.072	-0.023	0.006	0.010	0.000000	0.000000	-1807.41	175.31
3	GUIDE	1197885328	7.25	4446	-0.177	0.161	0.053	0.087	16.283090	-71.733943	2039.66	-825.60
4	GUIDE	1197884536	8.50	4444	-0.038	0.081	0.052	0.086	17.160729	-71.835289	1155.70	-1396.65
5	GUIDE	1197884712	8.29	4446	0.016	-0.131	0.063	0.103	16.087398	-72.252690	665.68	456.87
6	GUIDE	1198283128	7.58	4446	-0.028	-0.082	0.042	0.067	17.272580	-72.642428	-1228.81	268.98
7	GUIDE	1198282744	9.00	4441	0.231	-0.031	0.095	0.157	17.028326	-73.013356	-2134.02	1284.67

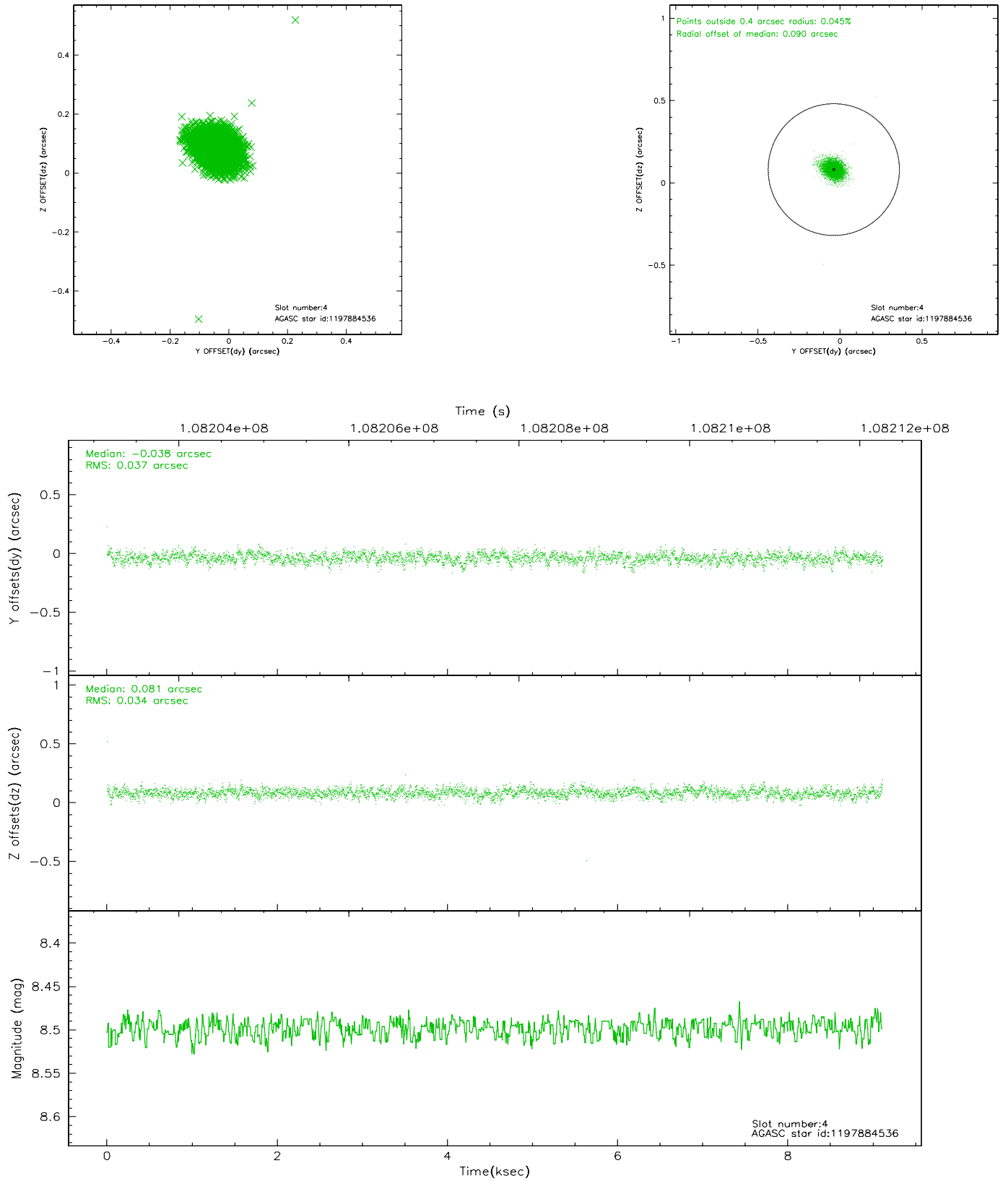


## 2.4 Star Slots

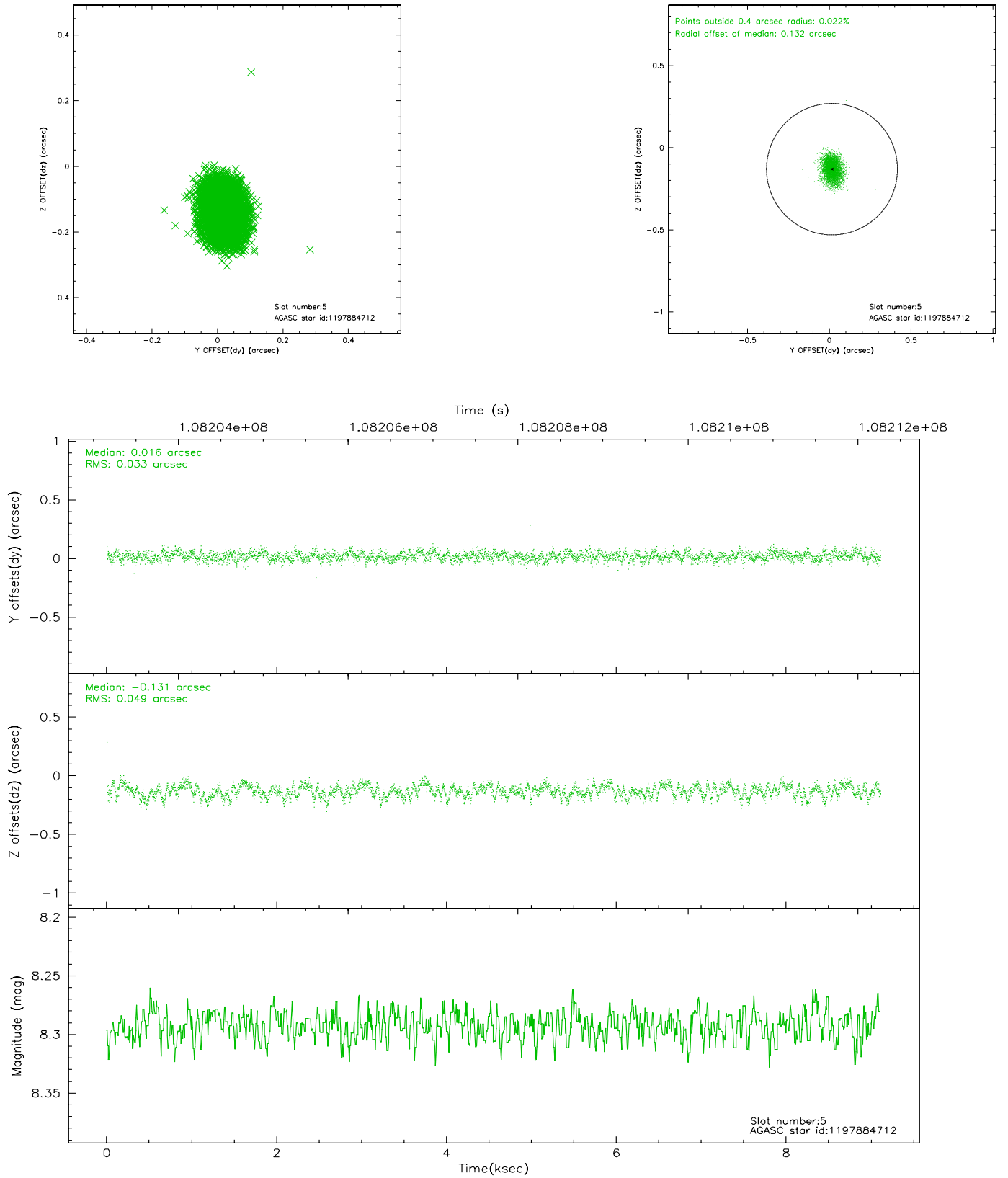
### 2.4.1 Slot 3



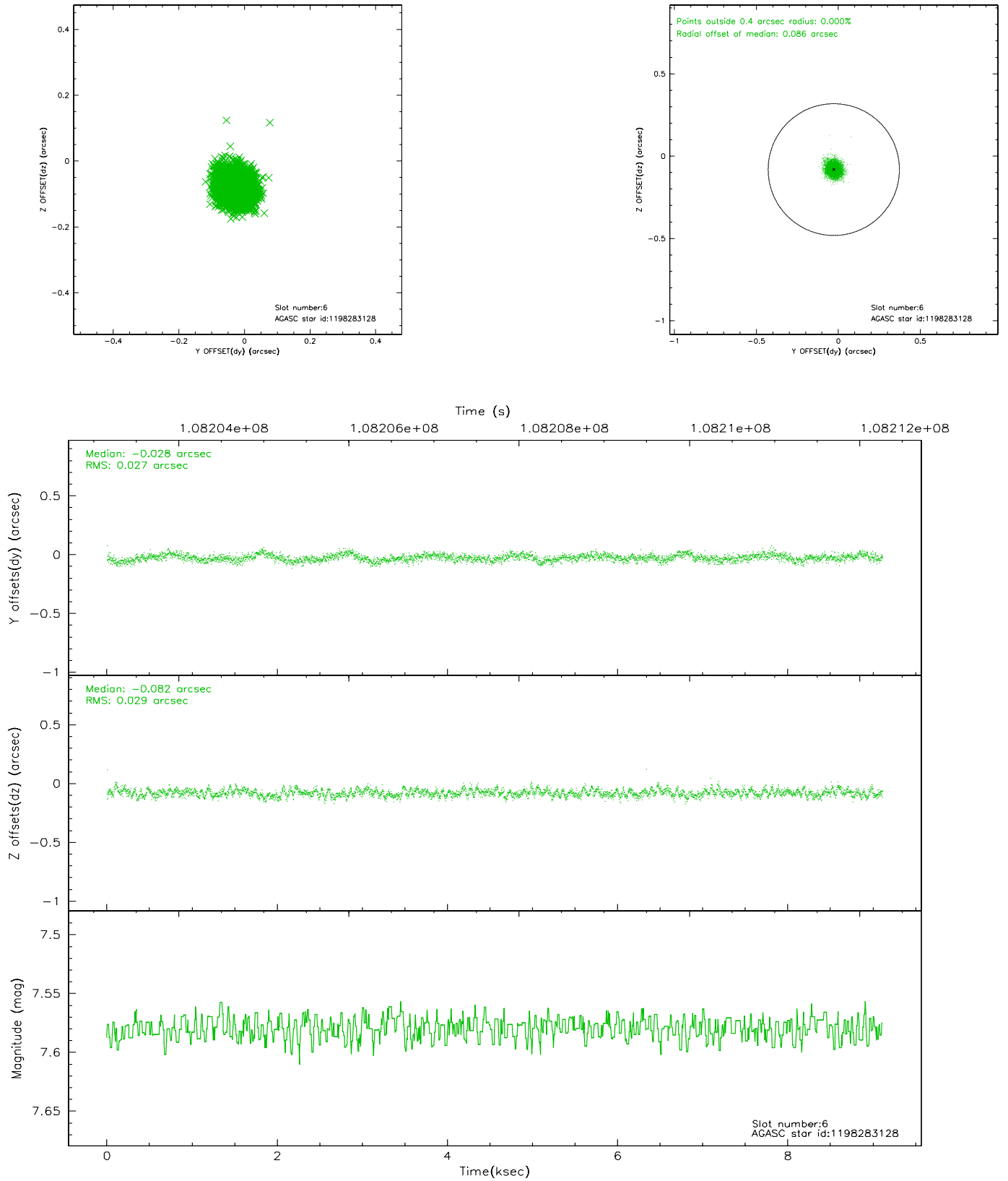
## 2.4.2 Slot 4



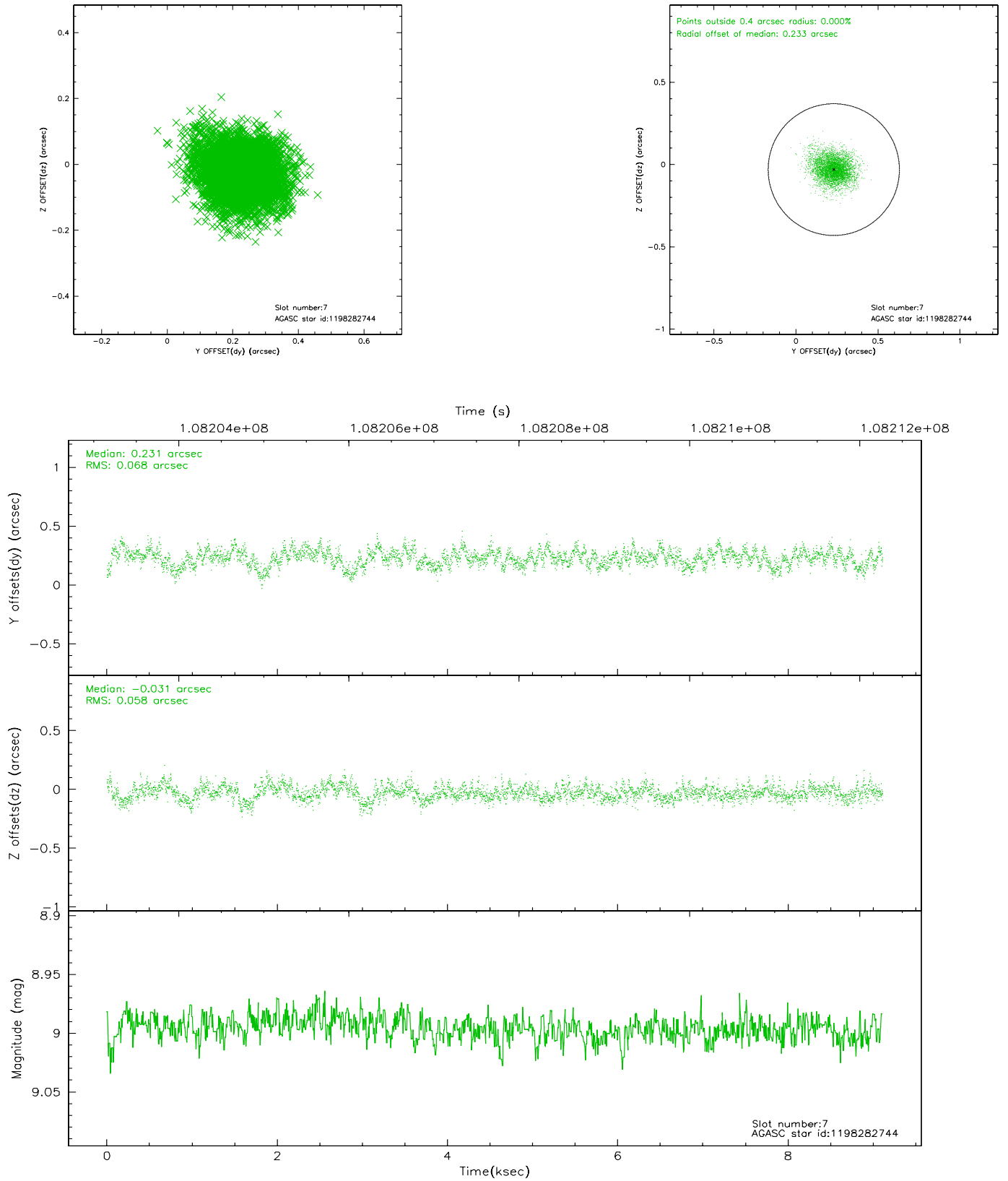
### 2.4.3 Slot 5



## 2.4.4 Slot 6

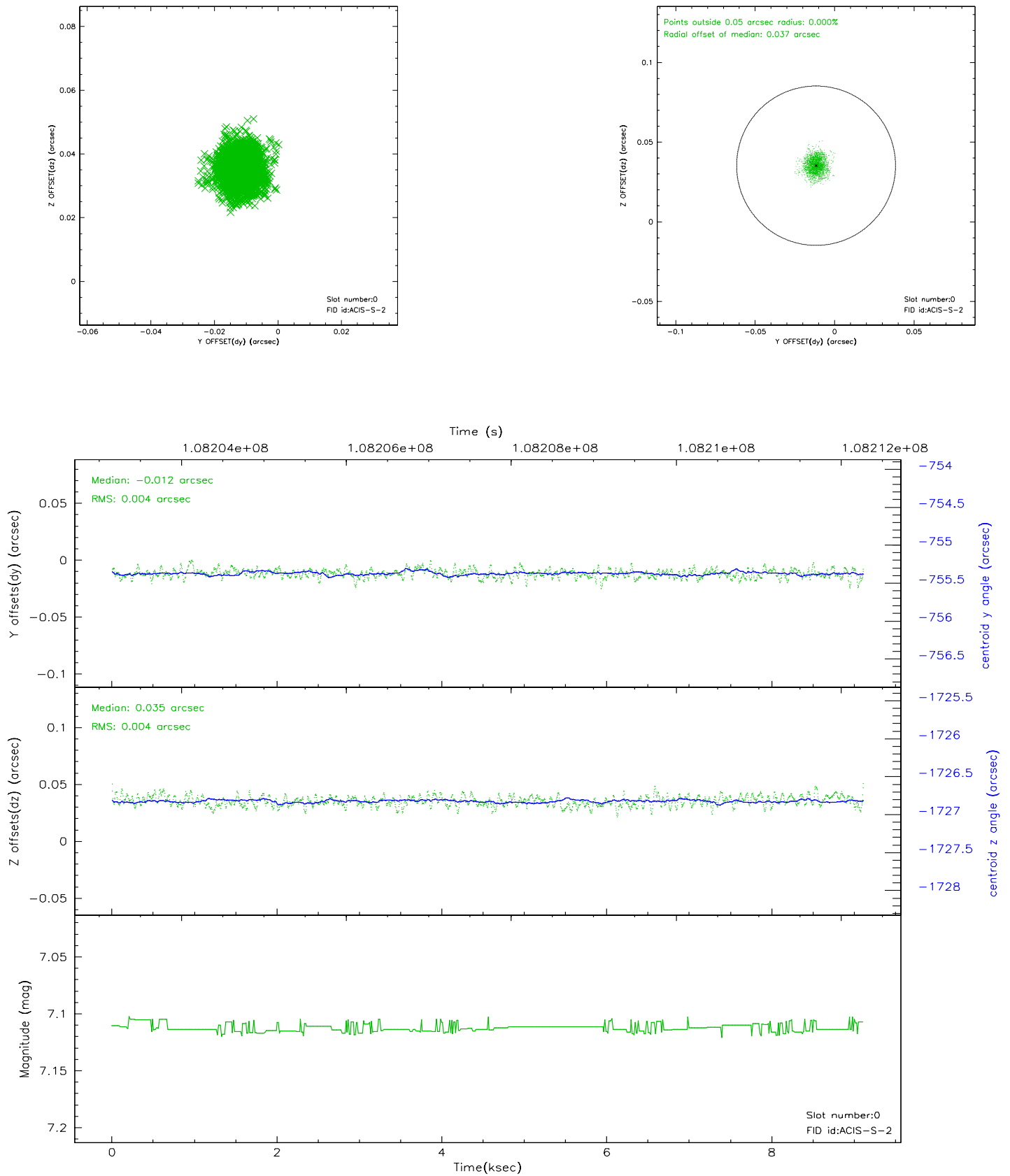


## 2.4.5 Slot 7

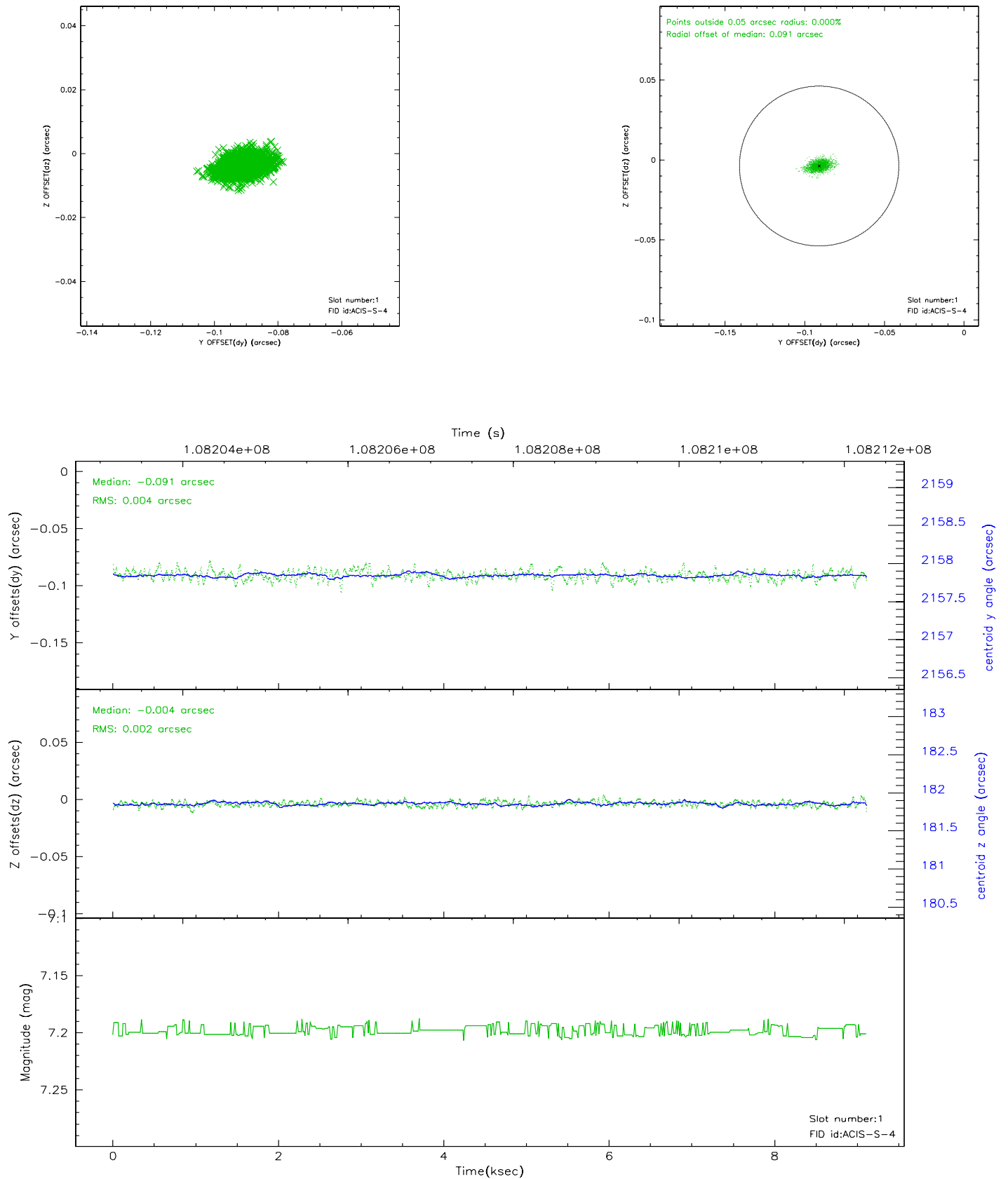


## 2.5 FID Slots

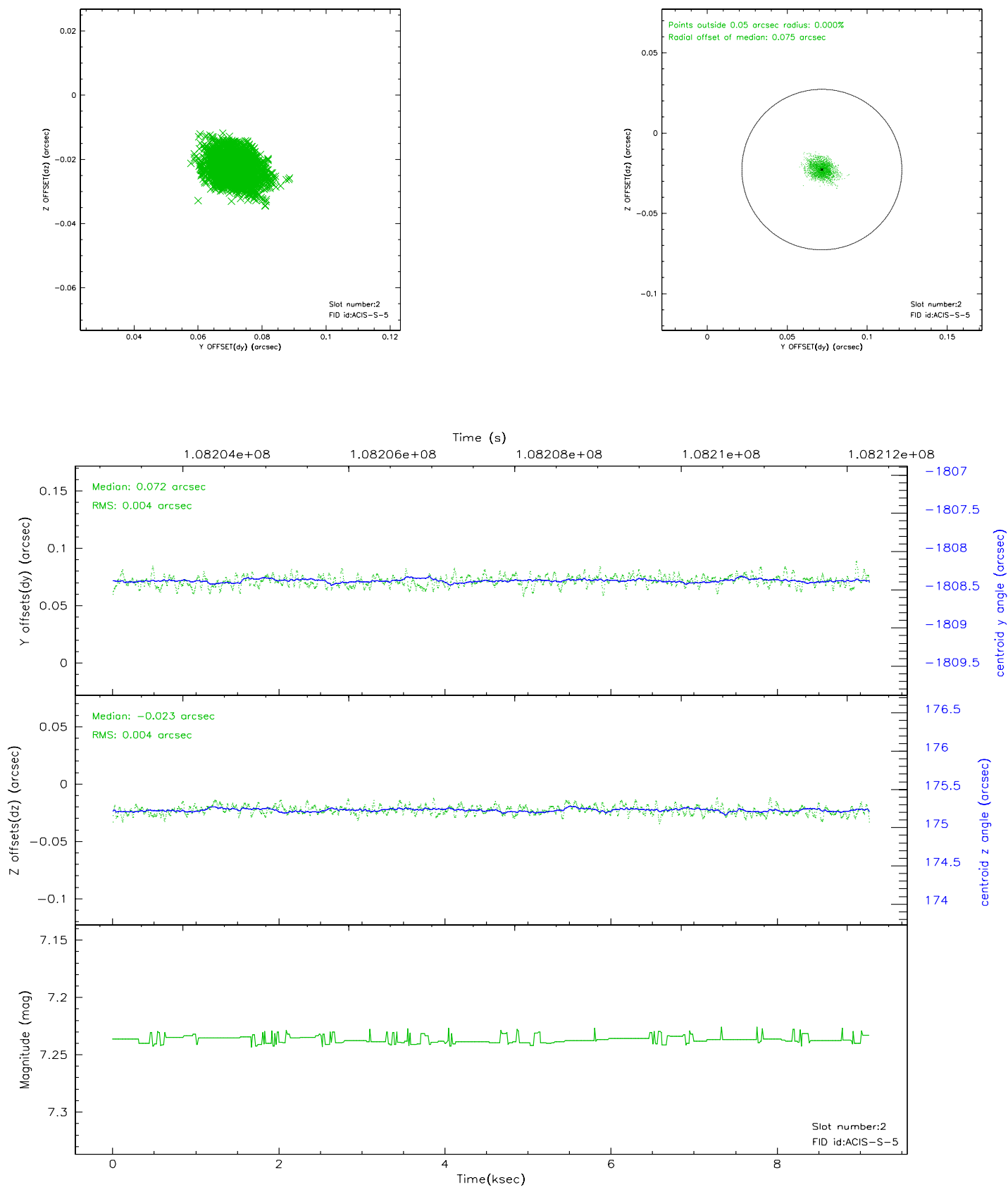
### 2.5.1 Slot 0



## 2.5.2 Slot 1

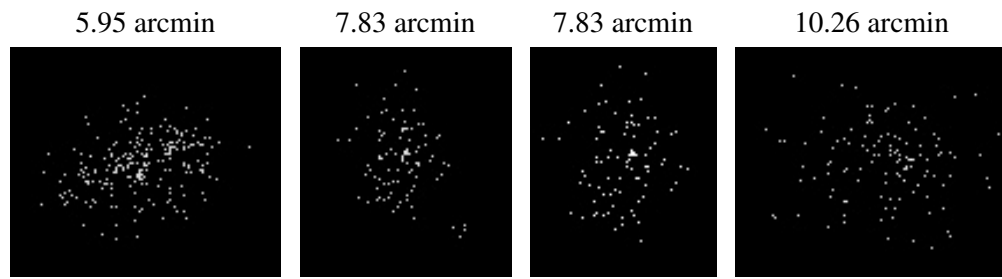


### 2.5.3 Slot 2





### 3 Point Sources



## A Summary

### A.1 Status

V&V Scientist	Beth Sundheim
V&V Date (YYYY-MM-DD)	2006.11.27
V&V Edition	1
V&V Disposition and Status	OK
V&V Charge Time	7.7

### A.2 Comments

Window constraint OK.